

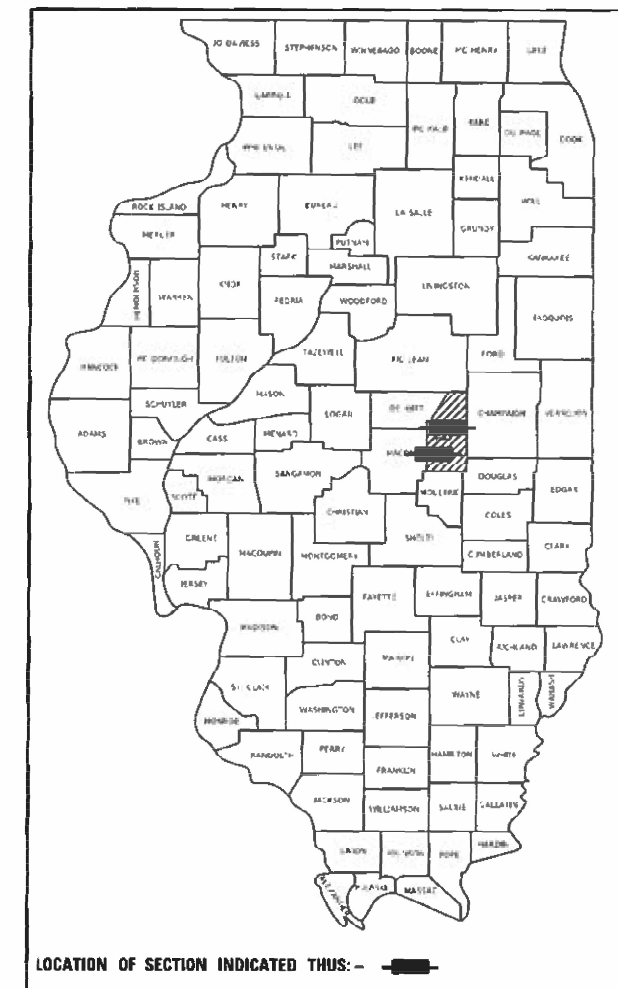
04-29-2022 LETTING ITEM 050

FOR INDEX OF SHEETS, SEE SHEET NO. 3
FOR SUMMARY OF QUANTITIES, SEE SHEET NO. 4

STATE OF ILLINOIS
DEPARTMENT OF TRANSPORTATION

F.A.P. RTE.	SECTION	COUNTY	TOTAL SHEETS	SHEET NO.
741	(101,71)	PIATT	27	1
		ILLINOIS	CONTRACT NO. 70F69	

D-95-012-22



**PROPOSED
HIGHWAY PLANS**

FAP ROUTE 741 (ILL 105)
SECTION (101,71)
VARIOUS HMA INLAYS
PIATT COUNTY

AT OLD RTE IL 47 INTERSECTION IN MONTICELLO
& AT IL 32 INTERSECTION SOUTH OF CERRO GORDO

C-95-029-22

SEE SHEET 2 FOR LOCATION MAPS

CURRENT TRAFFIC DATA (2022): FAP 741 (ILL 105)

DESIGN DESIGNATION	LEG "A": MIN. ARTERIAL	LEG "B": O.P.A.	LEG "C": O.P.A.
CURRENT ADT	1650	5800	4550
P.U. & P.C.%	83.4	91.1	91.6
S.U.%	3	6	5.5
M.U.%	13.6	2.9	2.9

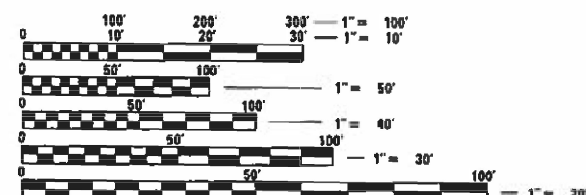
LEG "A": ILL 105 W OF ILL 32.
LEG "B": ILL 105 FROM IRON HORSE PLACE TO I-72 EB RAMPS.
LEG "C": ILL 105 FROM I-72 EB RAMPS TO I-72.

DESIGN DESIGNATIONS

F.A.P. RTE 741 (ILL 105) LEG "A" - MINOR ARTERIAL
F.A.P. RTE 741 (ILL 105) LEG "B" - O.P.A.
F.A.P. RTE 741 (ILL 105) LEG "C" - O.P.A.

TOWNSHIPS

Cerro Gordo
Monticello



FULL SIZE PLANS HAVE BEEN PREPARED USING STANDARD ENGINEERING SCALES. REDUCED SIZED PLANS WILL NOT CONFORM TO STANDARD SCALES. IN MAKING MEASUREMENTS ON REDUCED PLANS, THE ABOVE SCALES MAY BE USED.

J.U.L.I.E.
JOINT UTILITY LOCATION INFORMATION FOR EXCAVATORS
1-800-892-0123
OR 811

PROJECT ENGINEER: JASON STULTS
DESIGNER: ROBERT HODGSON
PHONE NUMBER: (217)465-4181
CONTRACT NO. 70F69

STATE OF ILLINOIS
DEPARTMENT OF TRANSPORTATION

SUBMITTED 1/18 20 22
Kensil A. Barnett *sen*
REGIONAL ENGINEER

March 25 20 22
[Signature]
ENGINEER OF DESIGN AND ENVIRONMENT

March 23 20 22
[Signature]
DIRECTOR OF HIGHWAYS PROJECT IMPLEMENTATION

PRINTED BY THE AUTHORITY
OF THE STATE OF ILLINOIS

INDEX OF SHEETS

SHEET NO.	DESCRIPTION
1	COVER SHEET
2	LOCATION MAPS
3	INDEX OF SHEETS
3	HIGHWAY STANDARDS
3	GENERAL NOTES
4	SUMMARY OF QUANTITIES
5-7	TYPICAL CROSS SECTIONS
8-15	SCHEDULE OF QUANTITIES
16-19	PLAN SHEETS
20-23	STRIPING DETAILS
24-27	PAVEMENT MARKING AND MARKERS (RURAL & URBAN TYPICAL APPLICATIONS)

HIGHWAY STANDARDS

000001-08	STANDARD SYMBOLS, ABBREVIATIONS AND PATTERNS
001006	DECIMAL OF AN INCH AND OF A FOOT
701006-05	OFF-ROAD OPERATIONS, 2L, 2W, 15' (4.5M) TO 24" (600MM) FROM PAVEMENT EDGE
701201-05	LANE CLOSURE, 2L, 2W, DAY ONLY, FOR SPEEDS ≥45 MPH
701301-04	LANE CLOSURE, 2L, 2W, SHORT TIME OPERATIONS
701901-08	TRAFFIC CONTROL DEVICES
780001-05	TYPICAL PAVEMENT MARKINGS
781001-04	TYPICAL APPLICATIONS RAISED REFLECTIVE PAVEMENT MARKERS

GENERAL NOTES

G.N. - 100A
ELECTRONIC FILES AND/OR ELECTRONIC SURVEY INFORMATION INCLUDING CADD FILES WILL NOT BE AVAILABLE TO THE CONTRACTOR.

G.N. - 105.09A
ALL ELEVATIONS SHOWN IN THE PLANS ARE BASED ON NORTH AMERICAN VERTICAL DATUM OF 1988. (NAVD 88)

G.N. - 406H

MIXTURE REQUIREMENTS

THE FOLLOWING MIXTURE REQUIREMENTS ARE APPLICABLE FOR THIS PROJECT:

LOCATION(S):	ILL 105
MIXTURE USE(S):	Surface
AC/PG:	PG 64-22
DESIGN AIR VOIDS	4.0% @ Ndes=50
MIXTURE COMP (GRADATION)	IL 9.5
FRICTION AGGREGATE	Mix D
MIXTURE WEIGHT	112
QUALITY MANAGE- MENT PROGRAM	QC/QA
SUBLOT SIZE	N.A.
MATERIAL TRANSFER DEVICE (REQUIRED?)	No

G.N. - 703A
SHORT TERM PAVEMENT MARKING SHALL BE APPLIED TO THE PAVEMENT AFTER ANY OF THE FOLLOWING: COLD MILLING AND/OR PLACING BITUMINOUS MATERIALS (TACK COAT), LEVELING BINDER (MACHINE METHOD), BINDER AND SURFACE COURSES. SHORT TERM PAVEMENT MARKING PLACED ON THE SURFACE SHALL COINCIDE WITH THE FINAL PAVEMENT STRIPING. SHORT TERM PAVEMENT MARKING PLACED PRIOR TO THE SURFACE SHALL COINCIDE WITH THE EXISTING PAVEMENT MARKINGS. USE 4 FEET PER 40 FEET (OR 10% PER STATION).

G.N. - 780 SPL
FINAL AND PERMANENT PAVEMENT MARKING FOR THIS PROJECT IS TO BE PERFORMED BY OTHERS. FIELD PERSONNEL WILL NOTIFY GARY SIMS, DISTRICT 5 TRAFFIC OPERATIONS ENGINEER AT (217) 465-4181 WHEN THE PROJECT IS ONE WEEK FROM COMPLETION IN ORDER TO SCHEDULE PAVEMENT MARKINGS.

G.N. - 781 SPL
THE FINAL PAVEMENT MARKINGS SHALL BE INSTALLED AFTER PLACING THE RAISED REFLECTIVE PAVEMENT MARKERS. CAREFUL CONSIDERATION WILL NEED TO GO INTO PLACEMENT OF MARKERS IN THE FIELD. PLEASE UTILIZE THE STRIPING DETAIL FOR YOUR PLACEMENT LOCATIONS.

COMMITMENTS

THERE ARE NO COMMITMENTS FOR THIS PROJECT.

**STATE OF ILLINOIS
DEPARTMENT OF TRANSPORTATION**

**INDEX OF SHEETS, GENERAL NOTES
& HIGHWAY STANDARDS**

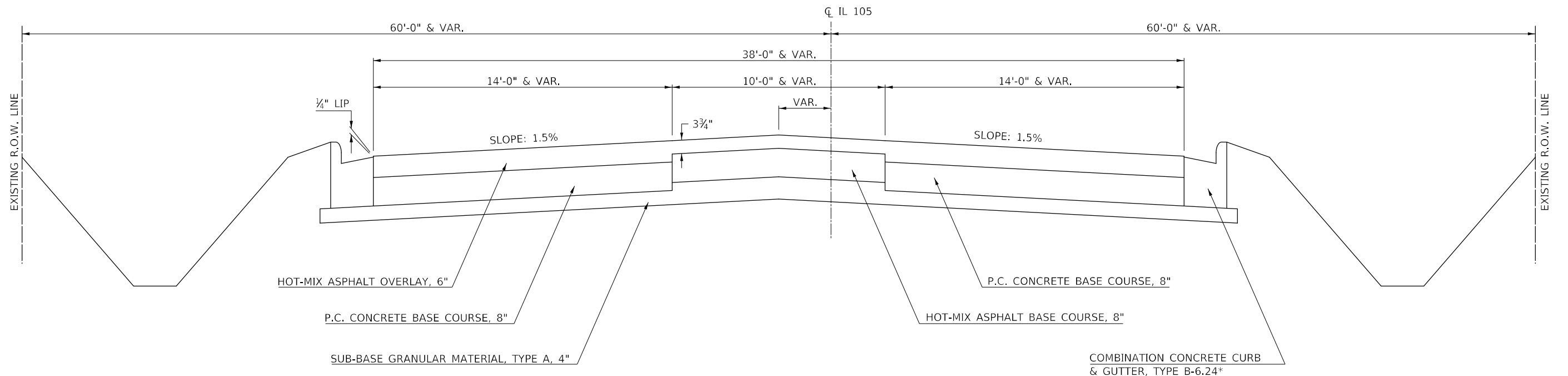
SCALE: SHEET OF SHEETS STA. TO STA.

F.A.P. RTE.	SECTION	COUNTY	TOTAL SHEETS	SHEET NO.
741	(10L7I)	PIATT	27	3
CONTRACT NO. 70F69				
ILLINOIS FED. AID PROJECT				

EXISTING TYPICAL CROSS SECTION A

CERRO GORDO LOCATION

STATION 50+00.00 TO STATION 57+00.00

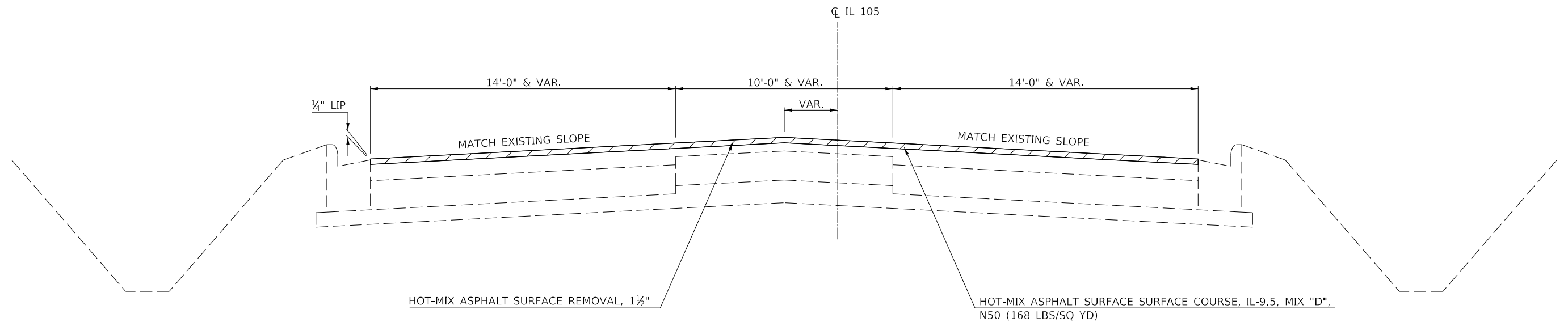


* LT. STATION 50+18.30 TO LT. STATION 50+83.30
RT. STATION 50+18.30 TO RT. STATION 50+86.70

PROPOSED TYPICAL CROSS SECTION 1

CERRO GORDO LOCATION

STATION 50+00.00 TO STATION 57+00.00



MODEL: I:\MODEL\MHFE... FILE: MHFE... PROJECT: I:\PROJECTS\DOT... SHEET: 27 OF 27

USER NAME = Piersontj	DESIGNED -	REVISED -
	DRAWN -	REVISED -
PLOT SCALE = 40,0000 * / in.	CHECKED -	REVISED -
PLOT DATE = 1/18/2022	DATE -	REVISED -

**STATE OF ILLINOIS
DEPARTMENT OF TRANSPORTATION**

IL 105 TYPICAL CROSS SECTION

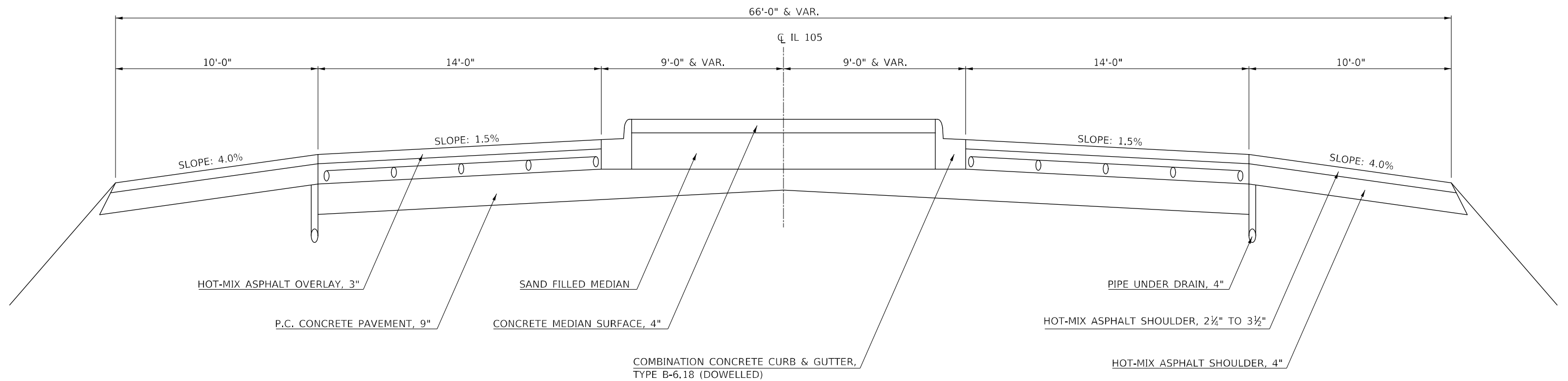
SCALE: SHEET OF SHEETS STA. TO STA.

F.A.P. RTE.	SECTION	COUNTY	TOTAL SHEETS	SHEET NO.
741	(101.71)	PIATT	27	5
CONTRACT NO. 70F69				
ILLINOIS FED. AID PROJECT				

EXISTING TYPICAL CROSS SECTION (C)

MONTICELLO LOCATION

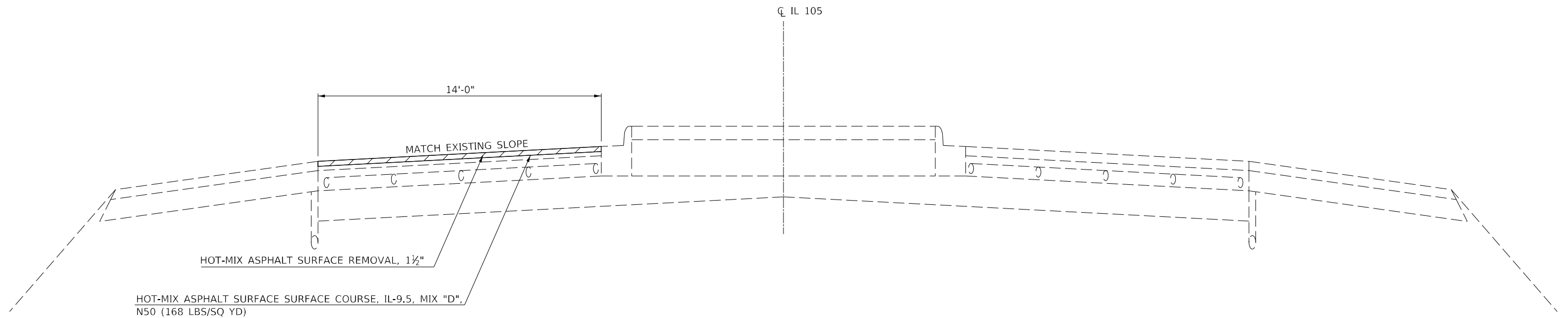
STATION 42 + 27.82 TO STATION 47 + 50.00



PROPOSED TYPICAL CROSS SECTION (3)

MONTICELLO LOCATION

STATION 42 + 27.82 TO STATION 47 + 50.00



MODEL: \\MODEL\MAME
 FILE: \\MAILS_P\pub\cpx\beadefy.com\FW\DOT\Documents\DOT_Offices\Dir\dr: S:\Project\10570F69\CADD\Drawn\CAD\Sheet\10570F69.dgn

USER NAME = PlersonTJ	DESIGNED -	REVISED -
	DRAWN -	REVISED -
PLOT SCALE = 40,0000 * / in.	CHECKED -	REVISED -
PLOT DATE = 1/18/2022	DATE -	REVISED -

**STATE OF ILLINOIS
DEPARTMENT OF TRANSPORTATION**

IL 105 TYPICAL CROSS SECTION				
SCALE:	SHEET	OF	SHEETS	STA. TO STA.

F.A.P. RTE.	SECTION	COUNTY	TOTAL SHEETS	SHEET NO.
741	(101.71)	PIATT	27	7
CONTRACT NO. 70F69				
ILLINOIS FED. AID PROJECT				

SCHEDULES OF QUANTITIES

HMA PAVING SCHEDULE										
STA	TO	STA	DESCRIPTION	LENGTH FT	WIDTH FT	DEPTH IN	AREA (MEASURED IN CADD) SQ FT	44000155	40600290	40604060
								HOT-MIX ASPHALT SURFACE REMOVAL, 1 1/2"	BITUMINOUS MATERIALS (TACK COAT)	HOT-MIX ASPHALT SURFACE COURSE, IL-9.5, MIX "D", N50
								SQ YD	POUND	TON
SOUTH OF CERRO GORDO LOCATION										
50+00.00		57+00.00	EB LANE	700.0	12.5 TO 15	1.50	9,519.42	1,057.71	475.97	88.85
50+00.00		57+00.00	WB LANE	700.0	12.5 TO 15	1.50	10,830.15	1,203.35	541.51	101.08
54+40.00		57+00.00	EB RT TURN LANE	260.0	12.5 TO 15	1.50	5,113.21	568.13	255.66	47.72
CERRO GORDO TOTAL =								2,829.20	1,273.14	237.65
MONTICELLO LOCATION										
36+75.00		47+50.00	SB & WB LANE	1,075.0	14.5 TO 15.5	1.50	15,610.25	1,734.47	780.51	145.70
MONTICELLO TOTAL =								1,734.47	780.51	145.70
GRAND TOTAL =								4563.67	2053.65	383.35
ROUND TO =								4565.00	2055.00	385.00

TEMPORARY RAMP SCHEDULE						
STA	DESCRIPTION	WIDTH FT	DROP-OFF INCH	RAMP LENGTH FT	40600990	
					TEMPORARY RAMP	
					FT	SQ YD
SOUTH OF CERRO GORDO LOCATION						
50+00.00	IL 105/IL 32 INTERSECTION	36.0	1.5	5.00	20.00	
57+00.00	WEST OF IL 105/IL 32 INTERSECTION	24.0	1.5	5.00	13.33	
CERRO GORDO TOTAL =					33.33	
MONTICELLO LOCATION						
36+75.00	N MARKET ST EAST OF IRON HORSE RD	12.0	1.5	5.00	6.67	
47+50.00	OLD RT 47 S OF I-72 STRUCTURE	12.0	1.5	5.00	6.67	
MONTICELLO TOTAL =					13.33	
GRAND TOTAL =					46.67	
ROUND TO =					47.00	

MODEL: \\MODEL\MAME
 FILE: \\MAILS_P\pub\luc\paw\bea\paw.com\FW\DOT\Documents\DOT_Offices\Dir\dr. S\Project\DOT57069\CADD\Drawn\CAD\Sheets\DOT57069\sh-Schedule.dgn

USER NAME = PiersontJ	DESIGNED -	REVISED -
	DRAWN -	REVISED -
PLOT SCALE = 40,0000 * / in.	CHECKED -	REVISED -
PLOT DATE = 1/18/2022	DATE -	REVISED -

**STATE OF ILLINOIS
DEPARTMENT OF TRANSPORTATION**

SCHEDULE OF QUANTITIES

SCALE: SHEET OF SHEETS STA. TO STA.

F.A.P. RTE.	SECTION	COUNTY	TOTAL SHEETS	SHEET NO.
741	(101.71)	PIATT	27	8
CONTRACT NO. 70F69				
ILLINOIS FED. AID PROJECT				

SCHEDULES OF QUANTITIES

RAISED REFLECTIVE PAVEMENT MARKER SCHEDULE								
STA	TO	STA	DESCRIPTION	LENGTH FT	WIDTH FT	78300200	78100100	
						RAISED REFLECTIVE PAVEMENT MARKER REMOVAL EACH	RAISED REFLECTIVE PAVEMENT MARKER EACH	
						EACH	CRYSTAL	AMBER
SOUTH OF CERRO GORDO LOCATION								
50+00.00		57+00.00	FR LANE WITH MEDIAN	700.0	12.5 TO 15	15.0	--	15.0
50+00.00		57+00.00	WB LANE WITH MEDIAN	700.0	12.5 TO 15	15.0	--	15.0
54+40.00		57+00.00	EB RT TURN LANE	260.0	12.5 TO 15	7.0	7.0	--
CERRO GORDO TOTAL =						37.0	7.0	30.0
MONTICELLO LOCATION								
36+75.00		47+50.00	SB & WB LANE	1,075.0	14.5 TO 15.5	9.0	9.0	--
MONTICELLO TOTAL =						9.0	9.0	--
TOTAL FOR BOTH LOCATIONS =						46.0	16.0	30.0
PAY ITEM TOTAL =						46.0	46.0	

SHORT TERM PAVEMENT MARKING SCHEDULE							
STA	TO	STA	DESCRIPTION	LENGTH FT	NUMBER OF APPLICATIONS EACH	70300100	
						SHORT TERM PAVEMENT MARKING FOOT	
						4" YELLOW	4" WHITE
SOUTH OF CERRO GORDO LOCATION							
50+00.00		57+00.00	EB & WB LANES	700.0	2.0	144.0	--
54+40.00		57+00.00	EB RT TURN LANE	260.0	2.0	--	40.0
CERRO GORDO TOTAL =						144.0	40.0
MONTICELLO LOCATION							
36+75.00		47+50.00	SB & WB LANE	1,075.0	2.0	216.0	40.0
36+75.00		47+50.00	10FT SHOULDER	1,075.0	1.0	24.0	--
MONTICELLO TOTAL =						240.0	40.0
TOTAL FOR BOTH LOCATIONS =						384.0	80.0
PAY ITEM TOTAL =						464.0	

NOTE:
REMOVAL OF SHORT TERM MARKINGS TO BE DONE BY OTHERS.
SEE GENERAL NOTE REGARDING PERMANENT STRIPING.

MODEL: \\MODEL\MARF5
FILE: \\MARF5_Plan\Subcontract\bea\by.com\PIV\DOT\Documents\DOT\Office\Dir\dir: S:\Project\DOT\70F69\CADD\Drawn\CAD\Sheets\DOT\70F69\sh-Schedule.dgn

USER NAME = PiersonJ	DESIGNED -	REVISED -
	DRAWN -	REVISED -
PLOT SCALE = 40,0000 * / in.	CHECKED -	REVISED -
PLOT DATE = 1/18/2022	DATE -	REVISED -

**STATE OF ILLINOIS
DEPARTMENT OF TRANSPORTATION**

SCHEDULE OF QUANTITIES

SCALE: SHEET OF SHEETS STA. TO STA.

F.A.P. RTE.	SECTION	COUNTY	TOTAL SHEETS	SHEET NO.
741	(101.71)	PIATT	27	9
CONTRACT NO. 70F69				
ILLINOIS		FED. AID PROJECT		

SCHEDULES OF QUANTITIES

FOR INFORMATION ONLY

THERMOPLASTIC PAVEMENT MARKING 4" SCHEDULE												
								78000200				X7830070
STA.	OFFSET	TO	STA.	OFFSET	LOCATION	LENGTH (FOOT)	THERMOPLASTIC PAVEMENT MARKING - 4"				GRV RCSD	
							YELLOW C.L. SKIPS	WHITE SOLID LINE	YELLOW SINGLE	YELLOW DOUBLE	PVT MRKG 5 (FOOT)	
LOCATION FAP 741 (ILL 105): SOUTH OF CERRO GORDO LOCATION												
50+21.31	RT	61.6	50+90.00	RT	15.0	INTERSECTION OF 105 & 32 (EDGE LINE)	88.8		88.8		88.8	
50+90.00	RT	15.0	52+23.00	RT	14.5	ILL 105 RIGHT SIDE (EDGE LINE)	133.0		133.0		133.0	
52+23.00	RT	14.5	54+27.00	RT	14.0	ILL 105 RIGHT SIDE (EDGE LINE)	204.0		204.0		204.0	
54+27.00	RT	14.0	55+85.00	RT	13.0	ILL 105 RIGHT SIDE (EDGE LINE)	158.0		158.0		158.0	
55+85.00	RT	13.0	56+45.00	RT	12.0	ILL 105 RIGHT SIDE (EDGE LINE)	60.0		60.0		60.0	
56+45.00	RT	12.0	57+00.00	RT	12.5	ILL 105 RIGHT SIDE (EDGE LINE)	55.0		55.0		55.0	
50+38.00	LT	0.2	50+54.50	RT	1.9	DBL YELLOW CENTER MEDIAN	16.5			33.0	66.0	
50+54.00	RT	1.9	50+73.50	RT	2.4	DBL YELLOW CENTER MEDIAN	19.5			39.0	78.0	
50+73.50	RT	2.4	51+03.75	RT	2.7	DBL YELLOW CENTER MEDIAN	30.3			60.5	121.0	
51+03.75	RT	2.7	51+93.30	RT	2.5	DBL YELLOW CENTER MEDIAN	89.6			179.1	358.2	
51+93.30	RT	2.5	54+77.65	RT	1.6	DBL YELLOW CENTER MEDIAN	284.3			568.7	1137.4	
54+77.65	RT	1.6	55+53.60	RT	1.3	SOLID YELLOW CENTER MEDIAN	76.0		76.0		76.0	
55+53.60	RT	1.3	57+00.00	RT	0.5	CL YELLOW SKIP DASH	146.4	40.0			40.0	
55+53.60	RT	0.5	57+00.00	LT	0.3	SOLID YELLOW NO PASSING LINE	146.4		146.4		146.4	
50+38.00	LT	0.2	50+37.65	LT	2.2	DBL YELLOW MEDIAN NOSE	2.0			2.0	4.0	
50+37.65	LT	2.2	50+99.30	LT	2.2	DBL YELLOW CENTERLINE MEDIAN	61.7			61.7	123.3	
50+99.30	LT	2.2	54+77.65	RT	0.7	DBL YELLOW CENTERLINE MEDIAN	378.3			378.3	756.7	
54+77.65	RT	0.7	55+53.60	RT	0.5	SOLID YELLOW CENTER MEDIAN	76.0		76.0		76.0	
50+67.50	LT	15.1	52+37.02	LT	14.7	SOLID WHITE RT TURN LANE LINE	169.5		169.5		169.5	
50+20.56	LT	102.2	50+92.34	LT	28.0	INTERSECTION OF 105 & 32 (EDGE LINE)	118.8		118.8		118.8	
50+92.34	LT	28.0	52+53.40	LT	25.0	ILL 105 LEFT SIDE (EDGE LINE)	161.1		161.1		161.1	
52+53.40	LT	25.0	54+47.34	LT	13.6	ILL 105 LEFT SIDE (EDGE LINE)	193.9		193.9		193.9	
54+47.34	LT	13.6	55+56.02	LT	11.0	ILL 105 LEFT SIDE (EDGE LINE)	108.7		108.7		108.7	
55+56.02	LT	11.0	57+00.00	LT	10.0	ILL 105 LEFT SIDE (EDGE LINE)	144.0		144.0		144.0	
TOTAL (CERRO GORDO LOCATION) =							40.0	1594.8	298.3	1322.3	4577.7	
ROUND TO =								3256.0			4578.0	

**THERMOPLASTIC PAVEMENT MARKINGS TO BE INSTALLED BY OTHERS.
PLEASE SEE GENERAL NOTES.**

MODEL: \\MODEL\MARF
FILE: \\MARF_Plan\Subcontract\bea\by.com\FW\DOT\Documents\DOT\Office\Dir\dr. S\Project\10570699\CADD\Drawn\CAD\Sheet\10570699\sh.Schedule.dgn

USER NAME = PiersonTJ	DESIGNED -	REVISED -	STATE OF ILLINOIS DEPARTMENT OF TRANSPORTATION	SCHEDULE OF QUANTITIES				F.A.P. RTE.	SECTION	COUNTY	TOTAL SHEETS	SHEET NO.
	DRAWN -	REVISED -						741	(101.71)	PIATT	27	10
PLOT SCALE = 40,0000 * / in.	CHECKED -	REVISED -						CONTRACT NO. 70F69				
PLOT DATE = 1/18/2022	DATE -	REVISED -						SCALE:	SHEET	OF	SHEETS	STA.
ILLINOIS FED. AID PROJECT												

SCHEDULES OF QUANTITIES

FOR INFORMATION ONLY

THERMOPLASTIC PAVEMENT MARKING 4" SCHEDULE CONTINUED											
							78000200				X7830070
STA.	OFFSET	TO	STA.	OFFSET	LOCATION	LENGTH (FOOT)	THERMOPLASTIC PAVEMENT MARKING - 4"				GRV RCSD PVT MRKG 5 (FOOT)
							YELLOW C.L. SKIPS (FOOT)	WHITE SOLID LINE (FOOT)	YELLOW SINGLE (FOOT)	YELLOW DOUBLE (FOOT)	
LOCATION FAP 741 (ILL 105): MONTICELLO LOCATION											
36+75.00	LT	25.5	40+57.63	LT	25.0	IL 105 LEFT SIDE (EDGE LINE)	382.6	382.6			382.6
40+57.63	LT	25.0	44+06.26	LT	23.3	IL 105 LEFT SIDE (EDGE LINE)	230.6	230.6			230.6
44+06.26	LT	23.3	47+50.00	LT	23.0	IL 105 LEFT SIDE (EDGE LINE)	343.7	343.7			343.7
38+79.00	LT	9.0	40+86.86	LT	9.0	IL 105 MEDIAN EDGE LINE	207.9		207.9		207.9
43+64.37	LT	8.4	45+50.41	LT	8.0	IL 105 TURN LANE EDGE LINE	186.0	186.0			186.0
46+99.39	LT	6.8	47+27.69	LT	8.8	IL 105 MEDIAN EDGE LINE	28.3		28.3		28.3
47+27.69	LT	8.8	47+50.00	LT	9.1	IL 105 MEDIAN EDGE LINE	22.3		22.3		22.3
TOTAL (MONTICELLO LOCATION) =							0.0	1143.0	258.5	0.0	1401.5
ROUND TO =											1402.0
GRAND TOTAL =											4658.0
GRAND TOTAL =											5980.0

**THERMOPLASTIC PAVEMENT MARKINGS TO BE INSTALLED BY OTHERS.
PLEASE SEE GENERAL NOTES.**

MODEL: \\MODEL\MRFS
FILE: \\MRFS_Plan\Illinois\paw_bentley.com\PIV\DOT\Documents\DOT_Offices\Dir\dir: S:\Project\10570699\CADD\data\CAD\sheet\10570699.shb\Schedule.dgn

USER NAME = P\ersonTJ	DESIGNED -	REVISED -	STATE OF ILLINOIS DEPARTMENT OF TRANSPORTATION	SCHEDULE OF QUANTITIES	F.A.P. RTE.	SECTION	COUNTY	TOTAL SHEETS	SHEET NO.	
PLOT SCALE = 40,0000 * / in.	CHECKED -	REVISED -			741	(101.71)	PIATT	27	11	
PLOT DATE = 1/18/2022	DATE -	REVISED -			CONTRACT NO. 70F69					
					ILLINOIS FED. AID PROJECT					

SCHEDULES OF QUANTITIES

FOR INFORMATION ONLY

THERMOPLASTIC PAVEMENT MARKING 6" SCHEDULE									
						78000400	X7830074		
STA.		OFFSET	TO	STA.	OFFSET	LOCATION	LENGTH (FOOT)	THERMOPLASTIC PAVEMENT MARKING - 6" (WHITE) (FOOT)	GRV RCSD PVT MRKG 7 (FOOT)
LOCATION FAP 741 (ILL 105): SOUTH OF CERRO GORDO LOCATION									
50+17.65	LT	15.0		50+67.49	LT	15.1	ILL 105 THRU/LEFT EDGE LINE	49.8	49.8
50+17.95	LT	53.0		50+67.49	LT	15.1	ILL 105 RT TURN LANE LT EDGE LINE	63.9	63.9
50+17.65	LT	15.0		50+17.95	LT	53.0	IL 32 EDGE LINE BY STOP SIGN MEDIAN	38.0	38.0
TOTAL (CERRO GORDO LOCATION) =								151.7	151.7
ROUND TO =								152.0	152.0
LOCATION FAP 741 (ILL 105): MONTICELLO LOCATION									
41+41.37	LT	24.6		43+64.37	LT	8.3	ILL 105 RT TURN LANE LT EDGE LINE	133.3	133.3
TOTAL (MONTICELLO LOCATION) =								133.3	133.3
ROUND TO =								134.0	134.0
GRAND TOTAL =								286.0	286.0

**THERMOPLASTIC PAVEMENT MARKINGS TO BE INSTALLED BY OTHERS.
PLEASE SEE GENERAL NOTES.**

MODEL: \\MODEL\MAME
FILE: \\MAME: \public\paw_bentley.com\PIV\DOT\Documents\DOT_offices\Dir\dir: S:\Project\10570669\CADD\data\CAD\sheet\10570669-shs-Schedule.dgn

USER NAME = PjersonTJ	DESIGNED -	REVISED -	STATE OF ILLINOIS DEPARTMENT OF TRANSPORTATION	SCHEDULE OF QUANTITIES				F.A.P. RTE. 741	SECTION (101.71)	COUNTY PIATT	TOTAL SHEETS 27	SHEET NO. 12
PLOT SCALE = 40,0000 * / in.	CHECKED -	REVISED -		SCALE: SHEET OF SHEETS STA. TO STA.				CONTRACT NO. 70F69				
PLOT DATE = 1/18/2022	DATE -	REVISED -		ILLINOIS FED. AID PROJECT								

SCHEDULES OF QUANTITIES

FOR INFORMATION ONLY

THERMOPLASTIC PAVEMENT MARKING 12" SCHEDULE										
							78000600		X7830078	
STA.	OFFSET	TO	STA.	OFFSET	LOCATION	LENGTH (FOOT)	THERMOPLASTIC PAVEMENT MARKING - 12" (WHITE) (FOOT)	THERMOPLASTIC PAVEMENT MARKING - 12" (YELLOW) (FOOT)	GRV RCSD PVT MRKG 13 (FOOT)	
LOCATION FAP 741 (ILL 105): SOUTH OF CERRO GORDO LOCATION										
50+36.67	LT	1.3	54+77.64	RT	1.1	CENTERLINE MEDIAN DIAGONALS (VARIABLE)	53.6	53.6	53.6	
50+17.65	LT	15.0	50+67.49	LT	15.1	STOP SIGN MEDIAN DIAGONALS (VARIABLE)	79.1	79.1	79.1	
							TOTAL (CERRO GORDO LOCATION) =	79.1	53.6	132.7
							ROUND TO =	80.0	54.0	133.0
LOCATION FAP 741 (ILL 105): MONTICELLO LOCATION										
NO 12" MARKING OR 13" GROOVING AT THIS LOCATION										
							TOTAL (MONTICELLO LOCATION) =	0.0	0.0	0.0
							ROUND TO =	0.0	0.0	0.0
							GRAND TOTAL =	80.0	54.0	133.0

**THERMOPLASTIC PAVEMENT MARKINGS TO BE INSTALLED BY OTHERS.
PLEASE SEE GENERAL NOTES.**

MODEL: I:\MODEL MARKS
FILE NAME: p:\pub\cpx\bea\paw.com\PIV\DOT\Documents\DOT\offices\Dir\dir: S:\Project\1057069\CAD\data\CAD\sheet\1057069\sh-Schedule.dgn

USER NAME = P\ersonTJ	DESIGNED -	REVISED -
	DRAWN -	REVISED -
PLOT SCALE = 40,0000 * / in.	CHECKED -	REVISED -
PLOT DATE = 1/18/2022	DATE -	REVISED -

**STATE OF ILLINOIS
DEPARTMENT OF TRANSPORTATION**

SCHEDULE OF QUANTITIES

SCALE: SHEET OF SHEETS STA. TO STA.

F.A.P. RTE.	SECTION	COUNTY	TOTAL SHEETS	SHEET NO.
741	(101.71)	PIATT	27	13
CONTRACT NO. 70F69				
ILLINOIS FED. AID PROJECT				

SCHEDULES OF QUANTITIES

FOR INFORMATION ONLY

THERMOPLASTIC PAVEMENT MARKING 24" SCHEDULE										
							78000650	X7830090		
STA.		OFFSET	TO	STA.		OFFSET	LOCATION	LENGTH (FOOT)	THERMOPLASTIC PAVEMENT MARKING - 24" (WHITE) (FOOT)	GRV RCSD PVT MRKG 25 (FOOT)
LOCATION FAP 741 (ILL 105): SOUTH OF CERRO GORDO LOCATION										
50+44.50	LT	2.6		50+44.50	LT	14.8	STOP BAR FOR EB ILL 105 THRU LANE	12.2	12.2	12.2
50+36.85	LT	32.4		50+47.50	LT	45.2	STOP BAR FOR EB ILL 105 RT TURN LANE	16.7	16.7	16.7
								TOTAL (CERRO GORDO LOCATION) =	28.9	28.9
								ROUND TO =	29.0	29.0
LOCATION FAP 741 (ILL 105): MONTICELLO LOCATION										
41+71.86	LT	45.3		41+57.47	LT	55.8	STOP BAR FOR SB ILL 105 RT TURN LANE	17.8	17.8	17.8
								TOTAL (MONTICELLO LOCATION) =	17.8	17.8
								ROUND TO =	18.0	18.0
								GRAND TOTAL =	47.0	47.0

**THERMOPLASTIC PAVEMENT MARKINGS TO BE INSTALLED BY OTHERS.
PLEASE SEE GENERAL NOTES.**

MODEL: \\MODEL\MAME
FILE: \\MAME_Plan\Illinois\paw_bentley.com\FW\DOT\Documents\DOT_Offices\Dir\dr. S\Project\570699\CADD\Drawn\CAD\Sheets\570699\sh-Schedule.dgn

USER NAME = P\ersonTJ	DESIGNED -	REVISED -
	DRAWN -	REVISED -
PLOT SCALE = 40,0000 * / in.	CHECKED -	REVISED -
PLOT DATE = 1/18/2022	DATE -	REVISED -

**STATE OF ILLINOIS
DEPARTMENT OF TRANSPORTATION**

SCHEDULE OF QUANTITIES

SCALE: SHEET OF SHEETS STA. TO STA.

F.A.P. RTE.	SECTION	COUNTY	TOTAL SHEETS	SHEET NO.
741	(101.71)	PIATT	27	14
CONTRACT NO. 70F69				
ILLINOIS FED. AID PROJECT				

SCHEDULES OF QUANTITIES

FOR INFORMATION ONLY

THERMOPLASTIC PAVEMENT MARKING SYMBOLS SCHEDULE					
			78000100	X7830060	
CENTERLINE STATION	OFFSET	DESCRIPTION	THERMOPLASTIC PAVEMENT MARKING LETTER & SYMBOL (SQ FT)	GRV RCSD PVT MRKG LTR & SYM (SQ FT)	
LOCATION FAP 741 (ILL 105): SOUTH OF CERRO GORDO LOCATION					
50+56.96	LT	27.2	RT TURN ARROW	3.6	3.6
51+35.82	LT	19.1	RT TURN ARROW	3.6	3.6
52+15.82	LT	18.4	RT TURN ARROW	3.6	3.6
			TOTAL (CERRO GORDO LOCATION) =	10.8	10.8
LOCATION FAP 741 (ILL 105): MONTICELLO LOCATION					
42+99.75	LT	40.3	RT TURN ARROW	3.6	3.6
43+74.72	LT	13.5	RT TURN ARROW	3.6	3.6
44+54.74	LT	13.6	RT TURN ARROW	3.6	3.6
45+34.73	LT	13.4	RT TURN ARROW	3.6	3.6
			TOTAL (MONTICELLO LOCATION) =	14.4	14.4
			GRAND TOTAL =	25.2	25.2

**THERMOPLASTIC PAVEMENT MARKINGS TO BE INSTALLED BY OTHERS.
PLEASE SEE GENERAL NOTES.**

MODEL: \\MODEL\MARF
FILE: \\MARF_Plan\Illinois\paw_bentley.com\PIV\DOT\Documents\DOT_Offices\Dir\dr_5\Project\0570F69\CADD\DATA\CAD\Sheets\0570F69\sh_Schedule.dgn

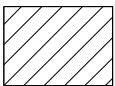
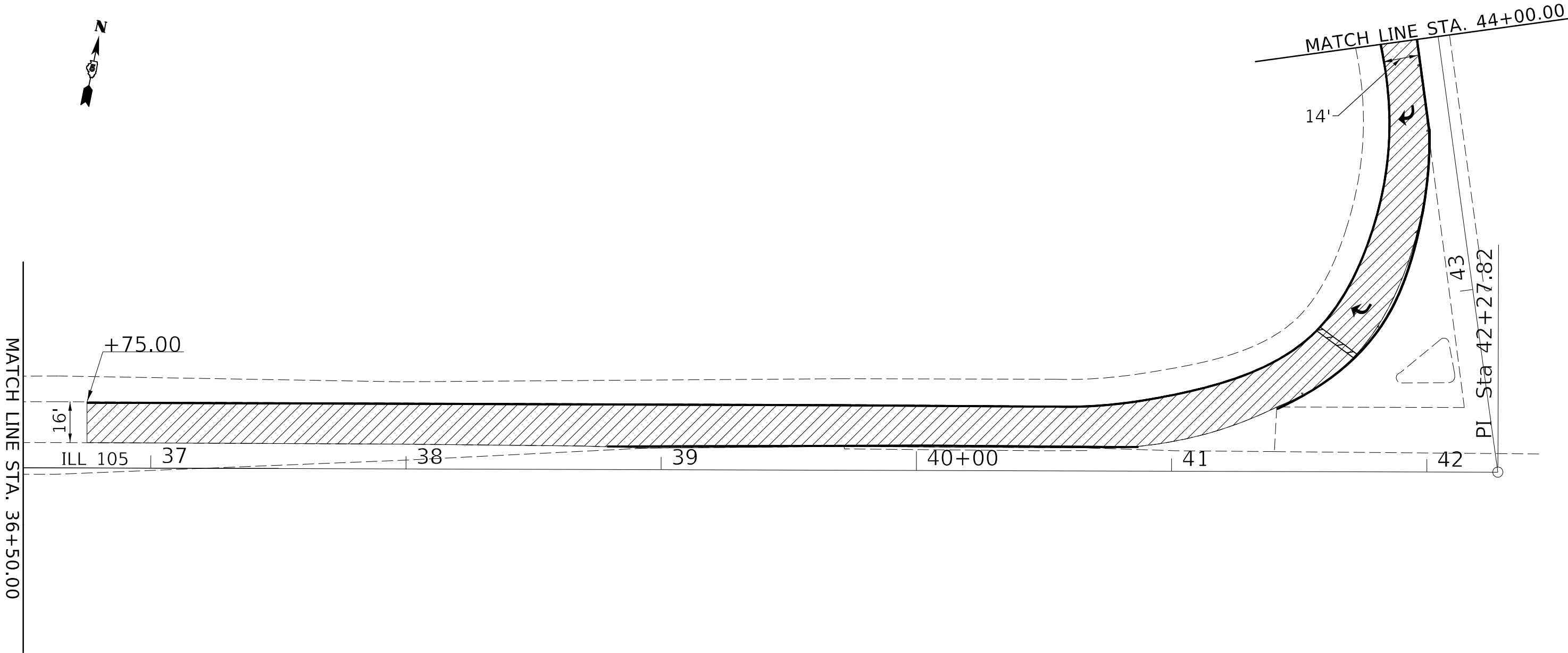
USER NAME = PjersonTJ	DESIGNED -	REVISED -
	DRAWN -	REVISED -
PLOT SCALE = 40,0000 * / in.	CHECKED -	REVISED -
PLOT DATE = 1/18/2022	DATE -	REVISED -

**STATE OF ILLINOIS
DEPARTMENT OF TRANSPORTATION**

SCHEDULE OF QUANTITIES

SCALE: SHEET OF SHEETS STA. TO STA.

F.A.P. RTE.	SECTION	COUNTY	TOTAL SHEETS	SHEET NO.
741	(101.71)	PIATT	27	15
CONTRACT NO. 70F69				
ILLINOIS FED. AID PROJECT				



HMA SURFACE REMOVAL, 1-1/2"

STRIPING IS SHOWN FOR INFORMATION ONLY

MODEL: \\MODEL\MAME
FILE: MAME: p:\u18c2\paw_bee\paw.com\PI\DOT\Documents\DOT_Offices\Dir\dir: S:\Project\0570F69\CADD\data\CAD\sheet\0570F69-shr-Plan30.dgn

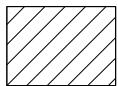
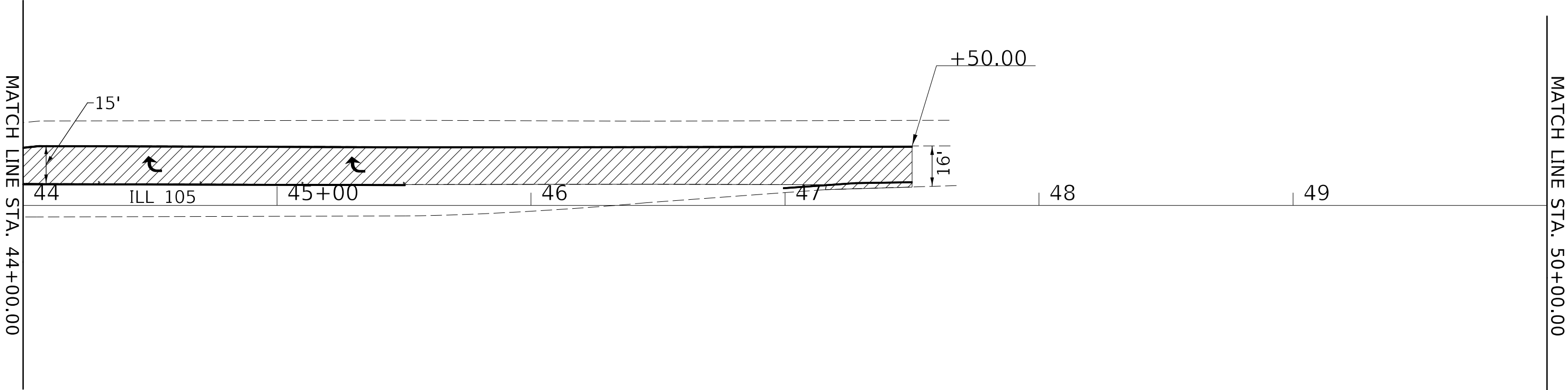
USER NAME = PiersonJ	DESIGNED -	REVISED -
	DRAWN -	REVISED -
PLOT SCALE = 40,0000 * / in.	CHECKED -	REVISED -
PLOT DATE = 1/18/2022	DATE -	REVISED -

STATE OF ILLINOIS
DEPARTMENT OF TRANSPORTATION

MONTICELLO PLAN SHEETS

SCALE: SHEET OF SHEETS STA. TO STA.

F.A.P. RTE.	SECTION	COUNTY	TOTAL SHEETS	SHEET NO.
741	(101.71)	PIATT	27	18
CONTRACT NO. 70F69				
ILLINOIS FED. AID PROJECT				



HMA SURFACE REMOVAL, 1-1/2"

STRIPING IS SHOWN FOR INFORMATION ONLY

MODEL: \\MODEL\MAME
 FILE: \\MAILS_Plan\Illinois\paw_beeley.com\PI\DOT\Documents\DOT_offices\Dir\dr: S:\Project\10570669\CADD\DATA\CADD\sheet\10570669-sh-Plan30.dgn

USER NAME = PleronTJ	DESIGNED -	REVISED -
	DRAWN -	REVISED -
PLOT SCALE = 40,0000 * / in.	CHECKED -	REVISED -
PLOT DATE = 1/18/2022	DATE -	REVISED -

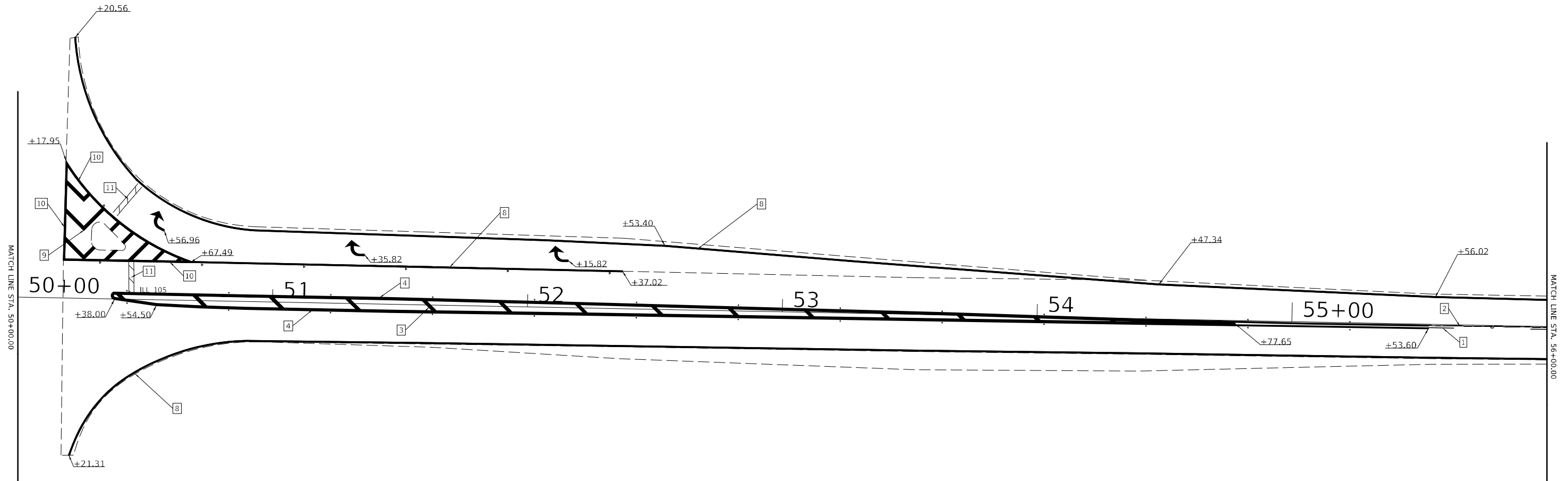
**STATE OF ILLINOIS
DEPARTMENT OF TRANSPORTATION**

MONTICELLO PLAN SHEETS

SCALE: SHEET OF SHEETS STA. TO STA.

F.A.P. RTE.	SECTION	COUNTY	TOTAL SHEETS	SHEET NO.
741	(10.71)	PIATT		
			CONTRACT NO. 70F69	
		ILLINOIS	FED. AID PROJECT	

FOR INFORMATION ONLY

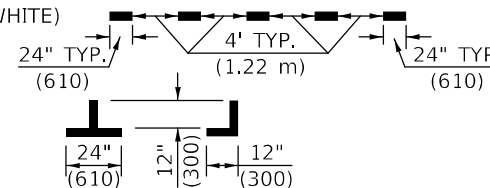


TYPICAL PAVEMENT MARKING LEGEND

- | | | |
|-----------------------------------|--|--|
| 1 4" (100) SKIP-DASH (YELLOW) | | 10 6" (150) SOLID (WHITE) |
| 2 4" (100) SOLID (YELLOW) | | 11 24" (600) STOP BAR (WHITE) |
| 3 12" (300) DIAGONAL (YELLOW) | | 12 8" (200) SOLID (WHITE) |
| 4 4" (100) DOUBLE YELLOW (NARROW) | | 13 4" (100) LANE LINE EXTENSIONS (WHITE) |
| 5 RESERVED | | 14 4" (100) PARKING WHITE |
| 6 RESERVED | | |
| 7 4" (100) SKIP-DASH (WHITE) | | |
| 8 4" (100) SOLID (WHITE) | | |
| 9 12" (300) DIAGONAL (WHITE) | | |

TYPICAL PAVEMENT MARKERS LEGEND

- TWO-WAY AMBER MARKER
- ONE-WAY AMBER MARKER
- ONE-WAY CRYSTAL MARKER



MODEL: \\MODEL\MAR\F... FILE: \\MAR\F... \Project\DOT\Office\Drawings\Project\DOT\Office\Drawings\Striping\Detail.dwg

USER NAME = PiersonTJ	DESIGNED -	REVISED -
PLOT SCALE = 40,0000 * / in.	DRAWN -	REVISED -
PLOT DATE = 1/18/2022	CHECKED -	REVISED -
	DATE -	REVISED -

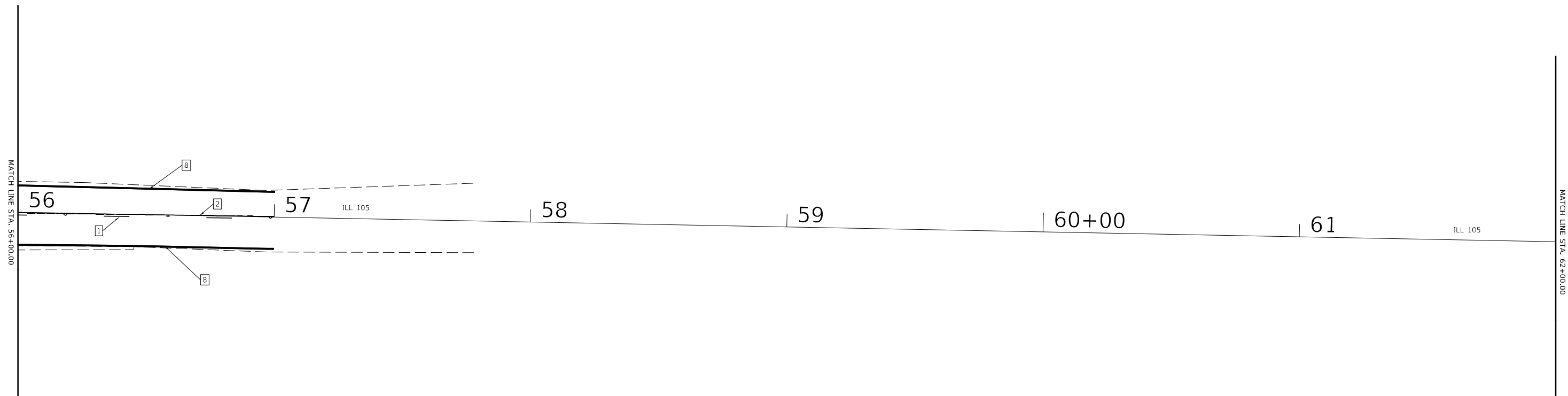
STATE OF ILLINOIS
DEPARTMENT OF TRANSPORTATION

CERRO GORDO
STRIPING DETAIL

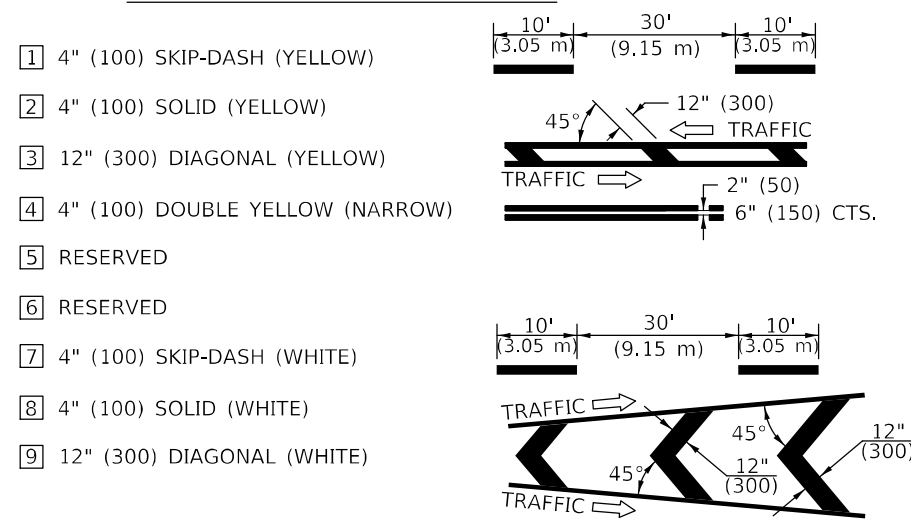
SCALE: SHEET OF SHEETS STA. TO STA.

F.A.P. RTE.	SECTION	COUNTY	TOTAL SHEETS	SHEET NO.
741	(101.71)	PIATT	27	20
CONTRACT NO. 70F69				
ILLINOIS FED. AID PROJECT				

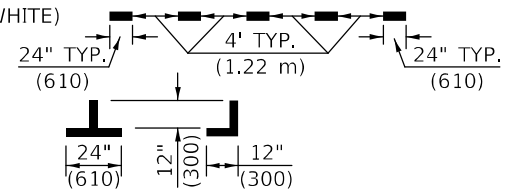
FOR INFORMATION ONLY



TYPICAL PAVEMENT MARKING LEGEND



- 10 6" (150) SOLID (WHITE)
- 11 24" (600) STOP BAR (WHITE)
- 12 8" (200) SOLID (WHITE)
- 13 4" (100) LANE LINE EXTENSIONS (WHITE)
- 14 4" (100) PARKING WHITE



TYPICAL PAVEMENT MARKERS LEGEND

- ◆ TWO-WAY AMBER MARKER
- ▶ ONE-WAY AMBER MARKER
- ▷ ONE-WAY CRYSTAL MARKER

MODEL: \\MODEL\MARF... FILE: MARF... \P\DOT\Documents\DOT Office\Dir\dir: S\Project\1057069\CADD\Drawn\CAD\Sheet\1057069\StrstripingDetail.dgn

USER NAME = PiersonTJ	DESIGNED -	REVISED -
	DRAWN -	REVISED -
PLOT SCALE = 40,0000 * / in.	CHECKED -	REVISED -
PLOT DATE = 1/18/2022	DATE -	REVISED -

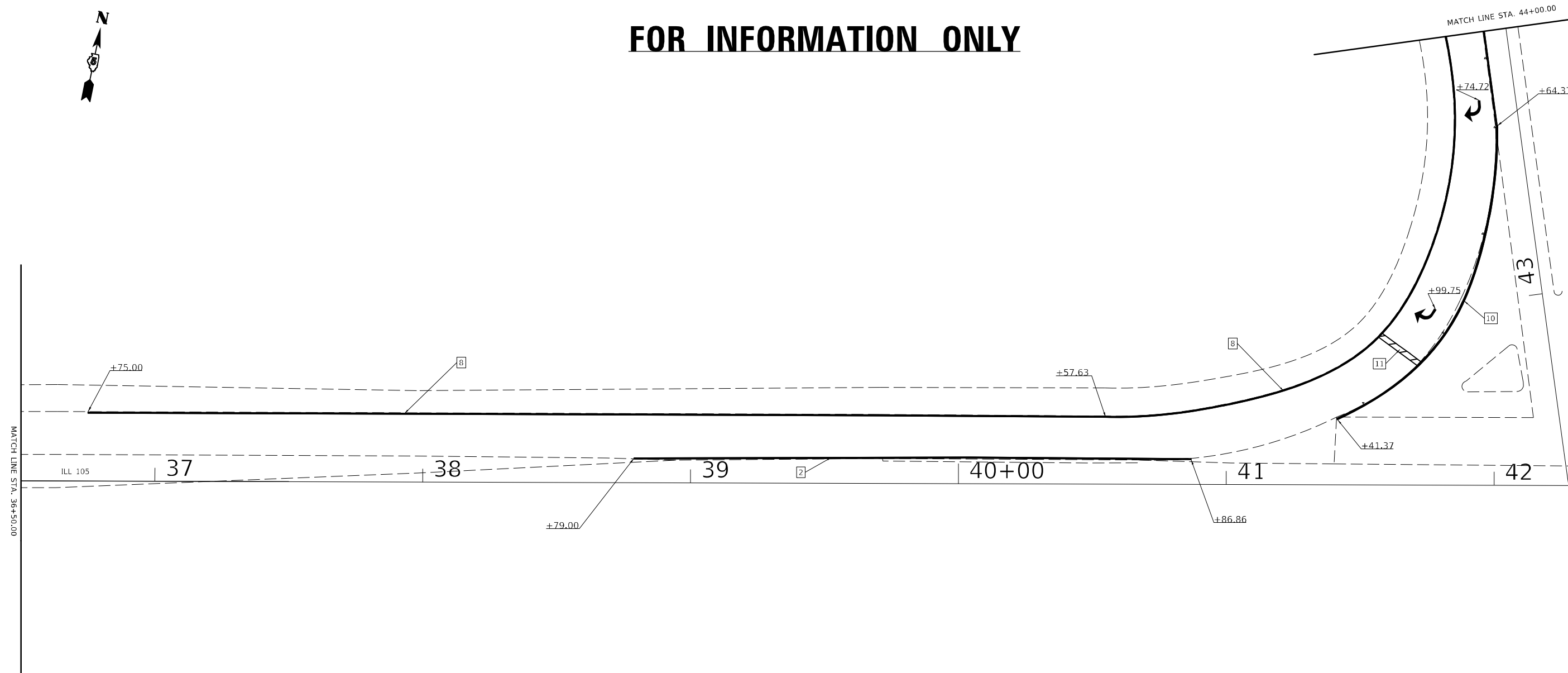
**STATE OF ILLINOIS
DEPARTMENT OF TRANSPORTATION**

**CERRO GORDO
STRIPING DETAIL**

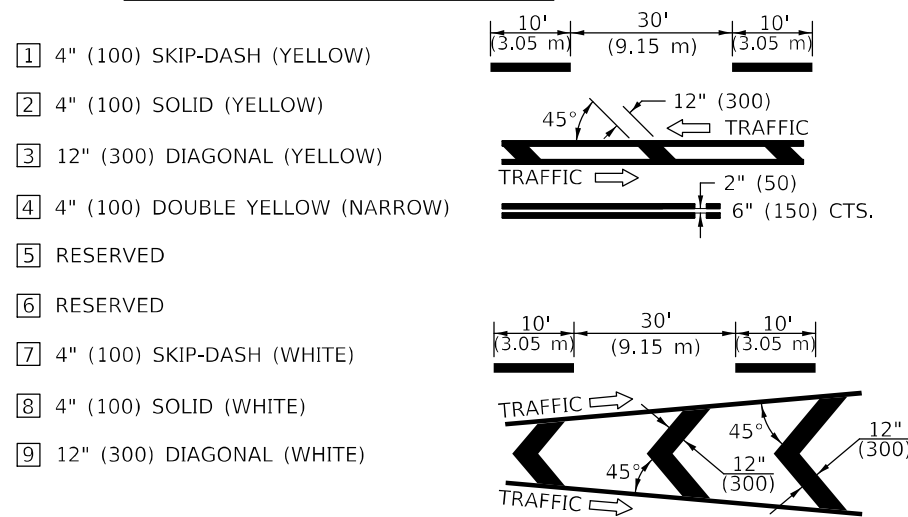
SCALE: SHEET OF SHEETS STA. TO STA.

F.A.P. RTE.	SECTION	COUNTY	TOTAL SHEETS	SHEET NO.
741	(101.71)	PIATT	27	21
CONTRACT NO. 70F69				
ILLINOIS FED. AID PROJECT				

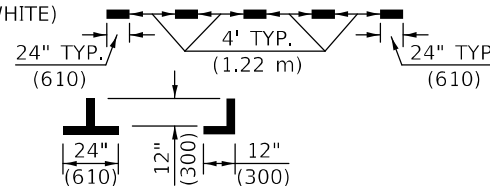
FOR INFORMATION ONLY



TYPICAL PAVEMENT MARKING LEGEND



- 10** 6" (150) SOLID (WHITE)
- 11** 24" (600) STOP BAR (WHITE)
- 12** 8" (200) SOLID (WHITE)
- 13** 4" (100) LANE LINE EXTENSIONS (WHITE)
- 14** 4" (100) PARKING WHITE



TYPICAL PAVEMENT MARKERS LEGEND

- ◆** TWO-WAY AMBER MARKER
- ▶** ONE-WAY AMBER MARKER
- ▷** ONE-WAY CRYSTAL MARKER

MODEL: \\MODEL\MAR\F...
 FILE: \\MAR\F...

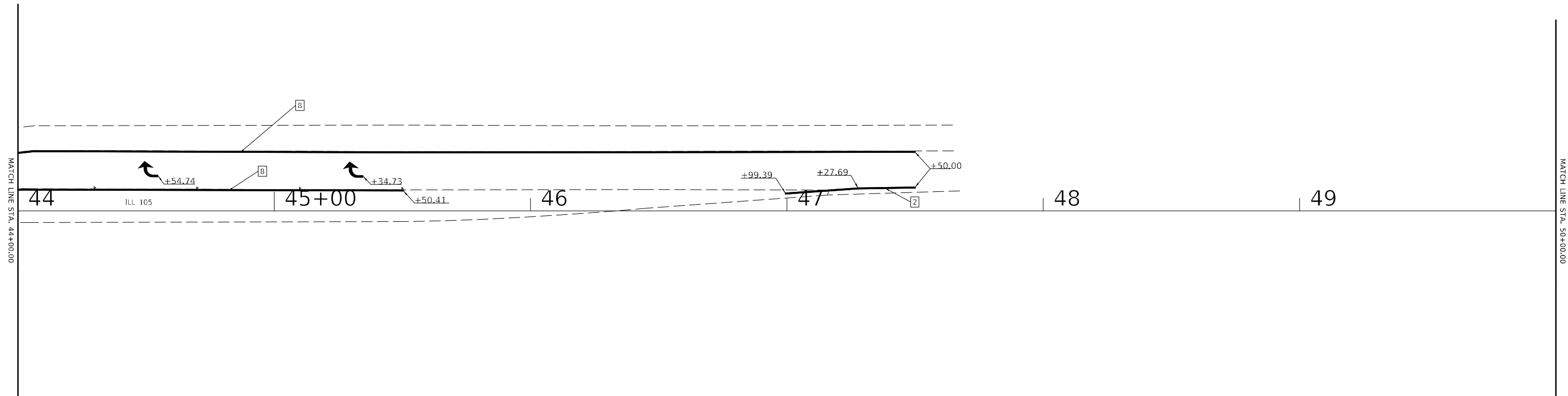
USER NAME = PiersonTJ	DESIGNED -	REvised -
PLOT SCALE = 40,0000 * / in.	DRAWN -	REvised -
PLOT DATE = 1/18/2022	CHECKED -	REvised -
	DATE -	REvised -

**STATE OF ILLINOIS
DEPARTMENT OF TRANSPORTATION**

MONTICELLO STRIPING DETAIL		F.A.P. RTE.	SECTION	COUNTY	TOTAL SHEETS	SHEET NO.
		741	(101.71)	PIATT	27	22
SCALE:	SHEET	OF	SHEETS	STA.	TO STA.	

CONTRACT NO. 70F69	
ILLINOIS	FED. AID PROJECT

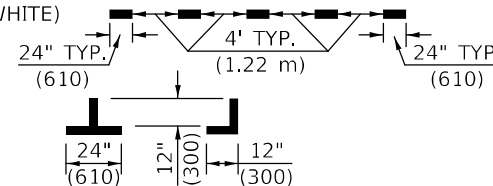
FOR INFORMATION ONLY



TYPICAL PAVEMENT MARKING LEGEND

- 1 4" (100) SKIP-DASH (YELLOW)
- 2 4" (100) SOLID (YELLOW)
- 3 12" (300) DIAGONAL (YELLOW)
- 4 4" (100) DOUBLE YELLOW (NARROW)
- 5 RESERVED
- 6 RESERVED
- 7 4" (100) SKIP-DASH (WHITE)
- 8 4" (100) SOLID (WHITE)
- 9 12" (300) DIAGONAL (WHITE)

- 10 6" (150) SOLID (WHITE)
- 11 24" (600) STOP BAR (WHITE)
- 12 8" (200) SOLID (WHITE)
- 13 4" (100) LANE LINE EXTENSIONS (WHITE)
- 14 4" (100) PARKING WHITE



TYPICAL PAVEMENT MARKERS LEGEND

- ◆ TWO-WAY AMBER MARKER
- ▶ ONE-WAY AMBER MARKER
- ▷ ONE-WAY CRYSTAL MARKER

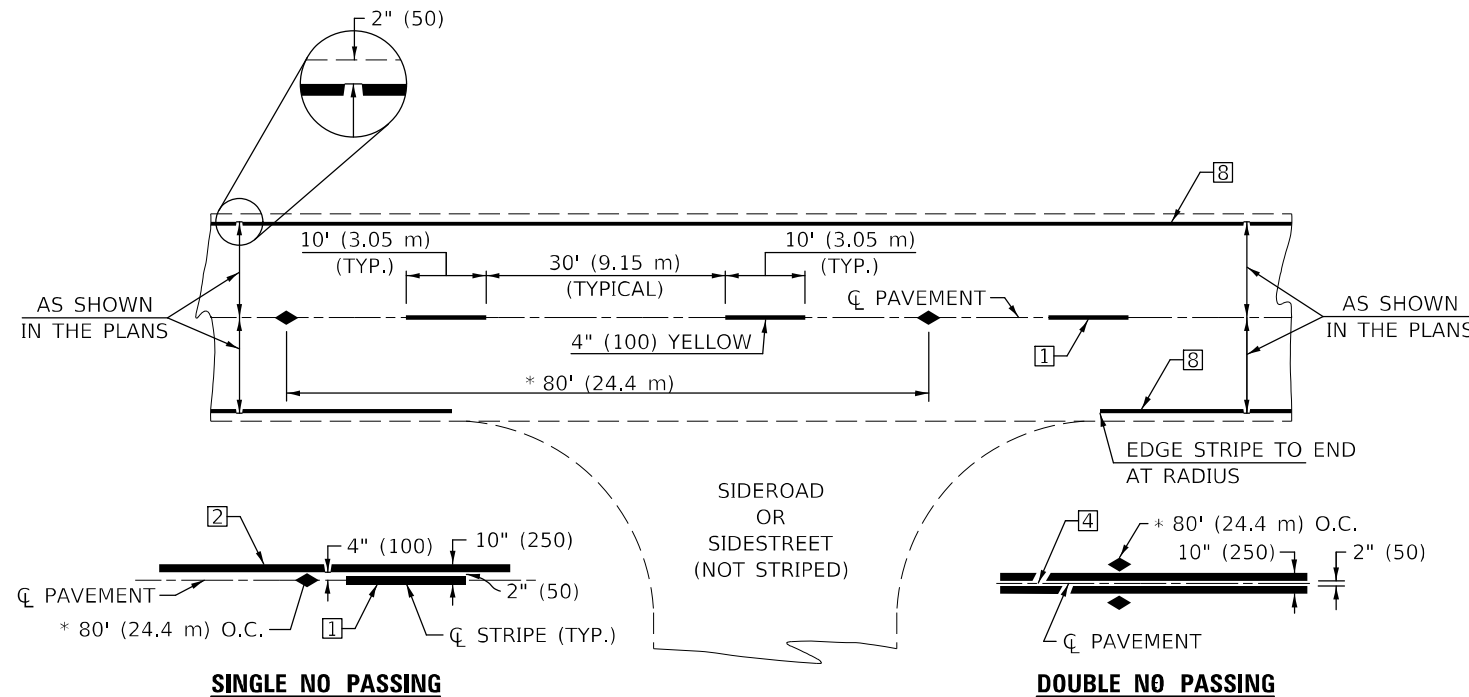
MODEL: \\MODEL\MAME... FILE: \\MAILS... \Project\DOT\Office\Drawings\Project\DOT\Office\Drawings\Project\DOT\Office\Drawings\StripingDetail.dwg

USER NAME = PlersonTJ	DESIGNED -	REVISED -
	DRAWN -	REVISED -
PLOT SCALE = 40,0000 * / in.	CHECKED -	REVISED -
PLOT DATE = 1/18/2022	DATE -	REVISED -

**STATE OF ILLINOIS
DEPARTMENT OF TRANSPORTATION**

MONTECELLO STRIPING DETAIL			
SCALE:	SHEET	OF	SHEETS
	STA.		TO STA.

F.A.P. RTE.	SECTION	COUNTY	TOTAL SHEETS	SHEET NO.
741	(101.71)	PIATT		
				CONTRACT NO. 70F69
ILLINOIS FED. AID PROJECT				



* REDUCE TO 40' (12.2 m) O.C. ON CURVES WITH POSTED OR ADVISORY SPEEDS OF 45 mph (70 km/h) OR LESS.

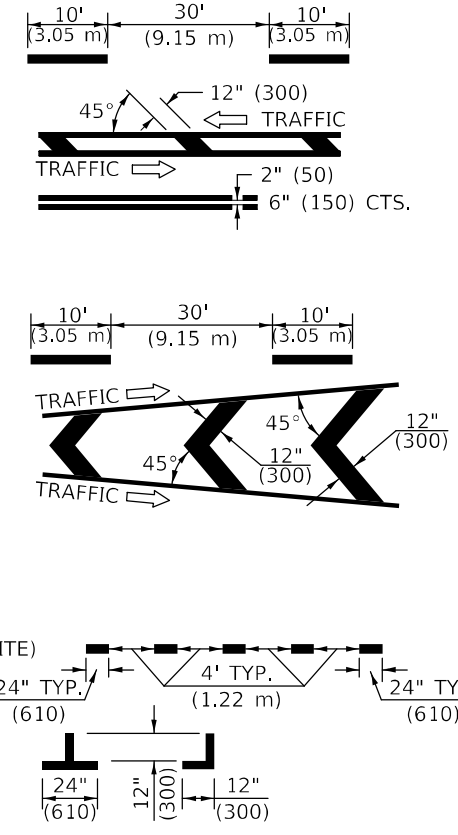
TWO LANE/TWO WAY

TYPICAL PAVEMENT MARKING LEGEND

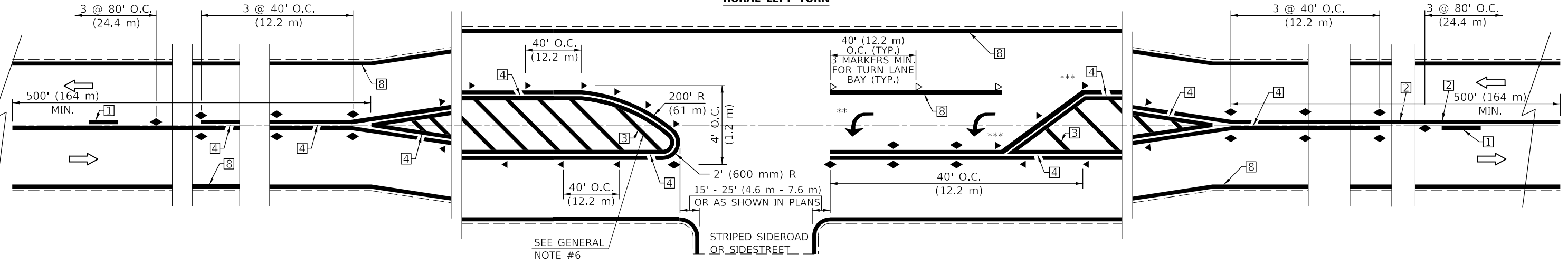
- 1 4" (100) SKIP-DASH (YELLOW)
- 2 4" (100) SOLID (YELLOW)
- 3 12" (300) DIAGONAL (YELLOW)
- 4 4" (100) DOUBLE YELLOW (NARROW)
- 5 RESERVED
- 6 RESERVED
- 7 4" (100) SKIP-DASH (WHITE)
- 8 4" (100) SOLID (WHITE)
- 9 12" (300) DIAGONAL (WHITE)
- 10 6" (150) SOLID (WHITE)
- 11 24" (600) STOP BAR (WHITE)
- 12 8" (200) SOLID (WHITE)
- 13 4" (100) LANE LINE EXTENSIONS (WHITE)
- 14 4" (100) PARKING WHITE

TYPICAL PAVEMENT MARKERS LEGEND

- ◆ TWO-WAY AMBER MARKER
- ▶ ONE-WAY AMBER MARKER
- ▷ ONE-WAY CRYSTAL MARKER



RURAL LEFT TURN



*** REDUCE SPACING IF NECESSARY TO ASSURE MARKERS AT CORNER POINTS.
 ** TURN ARROWS SHALL BE PLACED AS SHOWN ON SHEET #2.

Note: All dimensions are in INCHES (millimeters) unless otherwise shown.

DISTRICT 5 DETAIL NO. 7800AAAA

MODEL: I:\MODEL MARKS FILE: 7800AAAA.dwg: 1/18/2022 10:00:00 AM

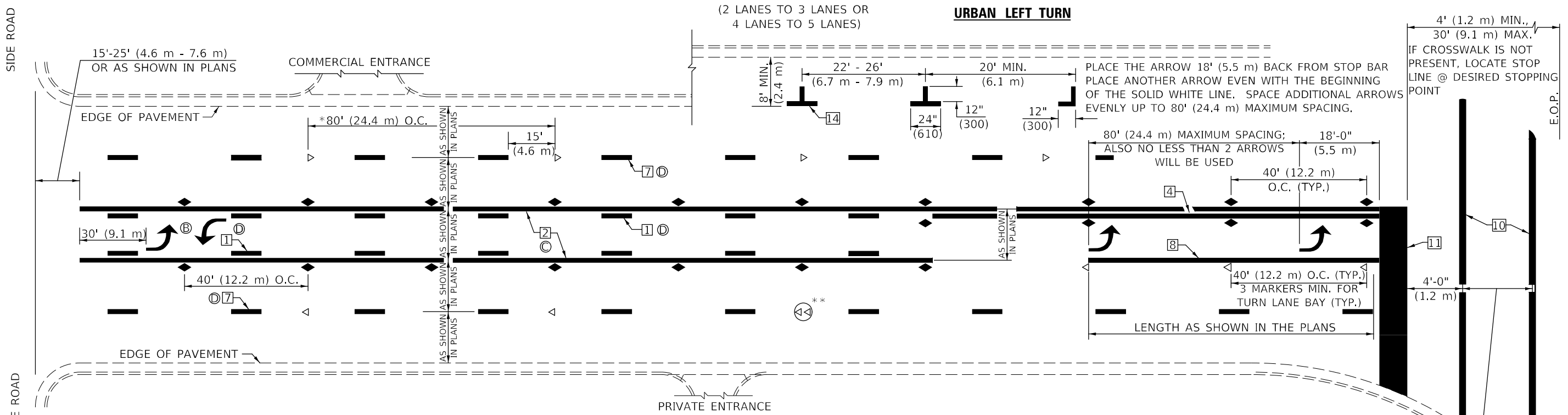
USER NAME = PiersonTJ	DESIGNED -	REVISED - 11/06
	DRAWN -	REVISED - 9/2009 KJT
PLOT SCALE = 40,0000 * / in.	CHECKED -	REVISED - 04/14 JLA
PLOT DATE = 1/18/2022	DATE -	REVISED - 3/2019 SWN

**STATE OF ILLINOIS
DEPARTMENT OF TRANSPORTATION**

**PAVEMENT MARKING AND MARKERS
(RURAL & URBAN APPLICATIONS)**

SCALE: SHEET 1 OF 4 SHEETS STA. TO STA.

F.A.P. RTE.	SECTION	COUNTY	TOTAL SHEETS	SHEET NO.
741	(101.71)	PIATT	27	24
CONTRACT NO. 70F69				
ILLINOIS FED. AID PROJECT				

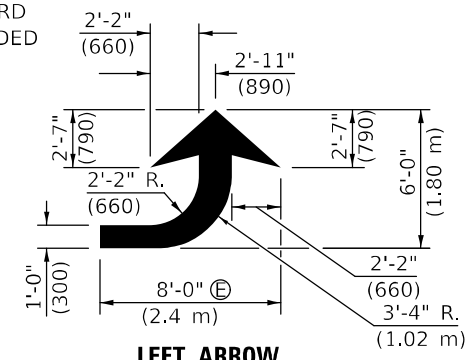


* REDUCE TO 40 FEET (12.2 METERS) ON CENTER ON CURVES WHERE ADVISORY SPEEDS ARE 10 MPH (15 km/h) LOWER THAN POSTED SPEEDS.

** DOUBLE LANE LINE MARKERS SHALL BE SPECIFIED AND SPACED AS SHOWN IN HIGHWAY STANDARD 781001 FOR MULTI-LANE DIVIDED AND UNDIVIDED HIGHWAYS.

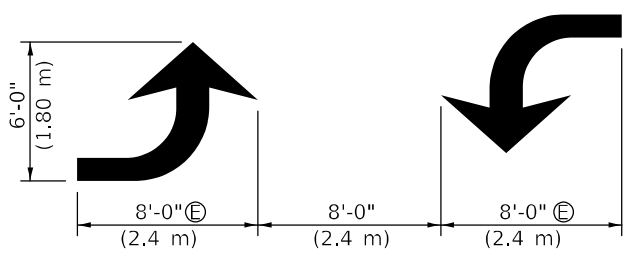
GENERAL NOTES:

- Ⓑ TURN ARROW PAIRS SHALL BE PLACED AT 250' (75 m) INTERVALS AND SHALL BE EVENLY SPACED BETWEEN BOTH ENDS OF THE BIDIRECTIONAL LEFT TURN LANE.
- Ⓒ THE SOLID YELLOW PAVEMENT MARKINGS [2] SHOULD GENERALLY START OR END NEAR THE RADIUS POINT OF EACH STREET RETURN EXCEPT WHERE ONE OR BOTH ENDS WOULD INCLUDE STOP BARS.
- Ⓓ THE SKIP-DASH PAVEMENT MARKINGS [1] OR [7] SHOULD BE CENTERED BETWEEN BOTH ENDS OF EACH CITY BLOCK AND SHALL BE PLACED SO THEY LINE UP ACROSS FROM EACH OTHER. SEE EXAMPLE ON SHEET 2 OF 3.
- Ⓔ USE LARGE ARROW SIZE FOR BOTH RURAL AND URBAN LOCATIONS. (SEE LAST PAGE OF SECTION 780x FOR SYMBOLS TABLE)



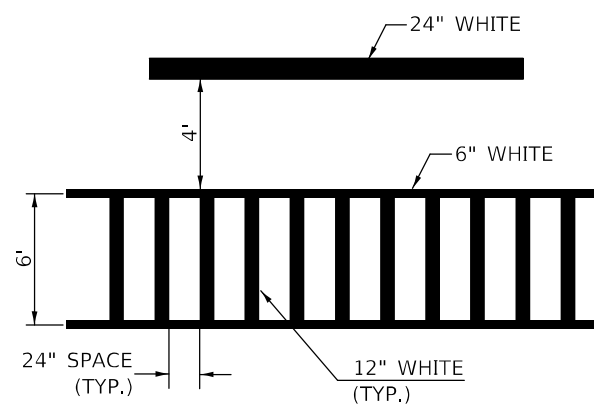
LEFT ARROW

REVERSE FOR RIGHT ARROW
AREA = 15.6 SQ. FT. (1.47 m²)
(WHITE)

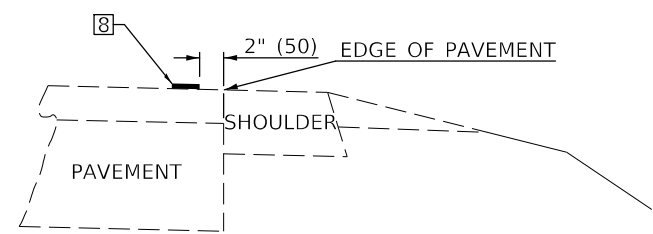


TYPICAL DOUBLE TURN ARROWS (WHITE)

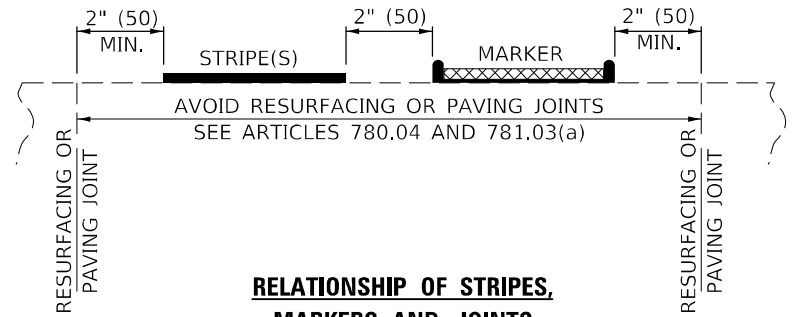
BLOOMINGTON-NORMAL CITY LIMITS ONLY



TYPICAL SPACING FOR CROSSWALKS & STOP BARS



RELATIONSHIP OF EDGE LINE TO EDGE OF PAVEMENT
(SAFETY SHOULDER OR PAVED SURFACE)
SEE ARTICLE 780.04



RELATIONSHIP OF STRIPES, MARKERS AND JOINTS

Note: All dimensions are in INCHES (millimeters) unless otherwise shown.

MODEL: I:\MODEL\MARKS FILE NAME: pav\blmnorm\pav\blmnorm.dwg PROJECT: I:\PROJECTS\70699\CADD\DATA\CAD\CHERS\70699.dwg

USER NAME = PlersonTJ	DESIGNED -	REVISED - 11/06
	DRAWN -	REVISED - 9/2009 KJT
PLOT SCALE = 40,0000 */ in.	CHECKED -	REVISED - 04/14 JLA
PLOT DATE = 1/18/2022	DATE -	REVISED - 3/2019 SWN

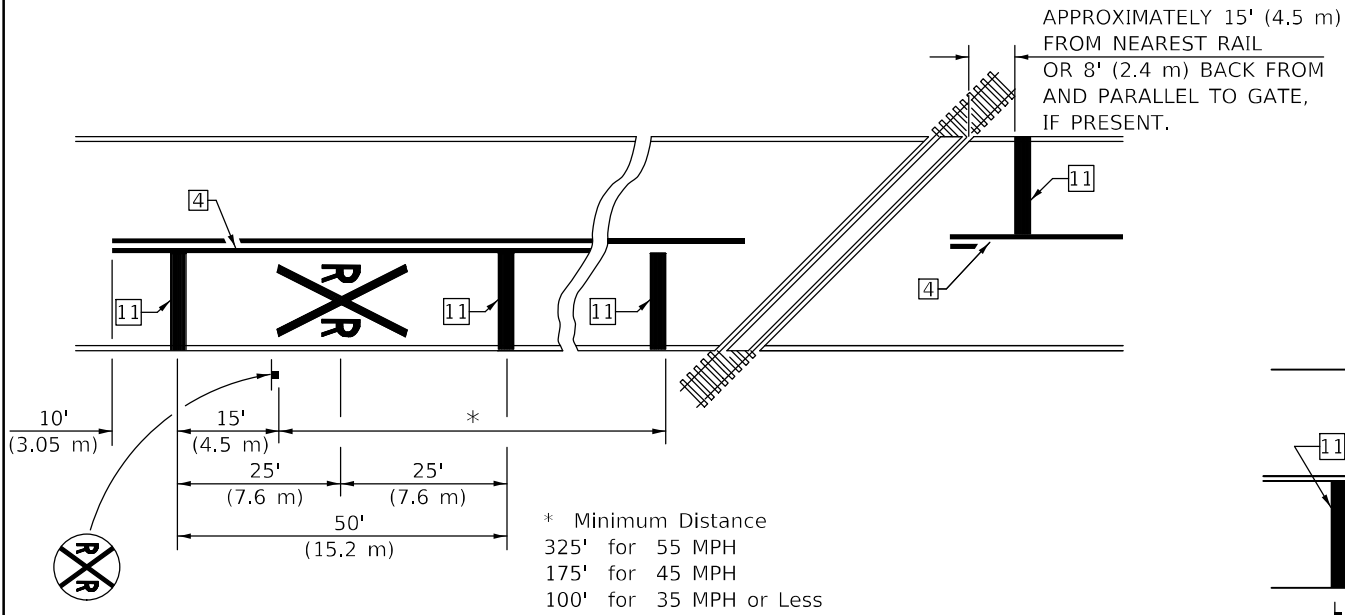
**STATE OF ILLINOIS
DEPARTMENT OF TRANSPORTATION**

**PAVEMENT MARKING AND MARKERS
(RURAL & URBAN APPLICATIONS)**

SCALE: SHEET 2 OF 4 SHEETS STA. TO STA.

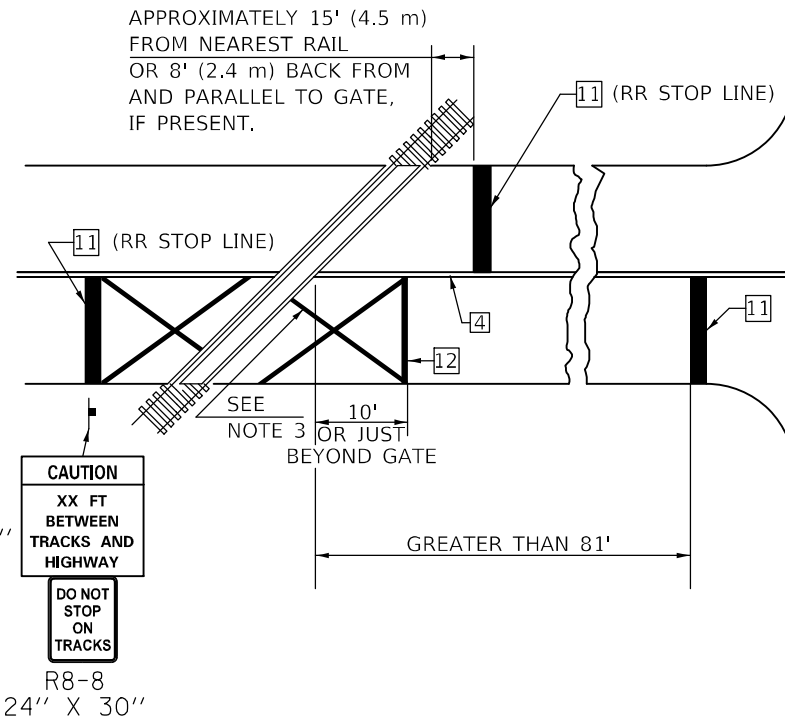
DISTRICT 5 DETAIL NO. 7800AAAA				
F.A.P. RTE.	SECTION	COUNTY	TOTAL SHEETS	SHEET NO.
741	(101.71)	PIATT	27	25
			CONTRACT NO. 70F69	
			ILLINOIS FED. AID PROJECT	

DESIGNER NOTE: SEE TABLE 2C-4 OF THE MUTCD FOR ADDITIONAL INFORMATION



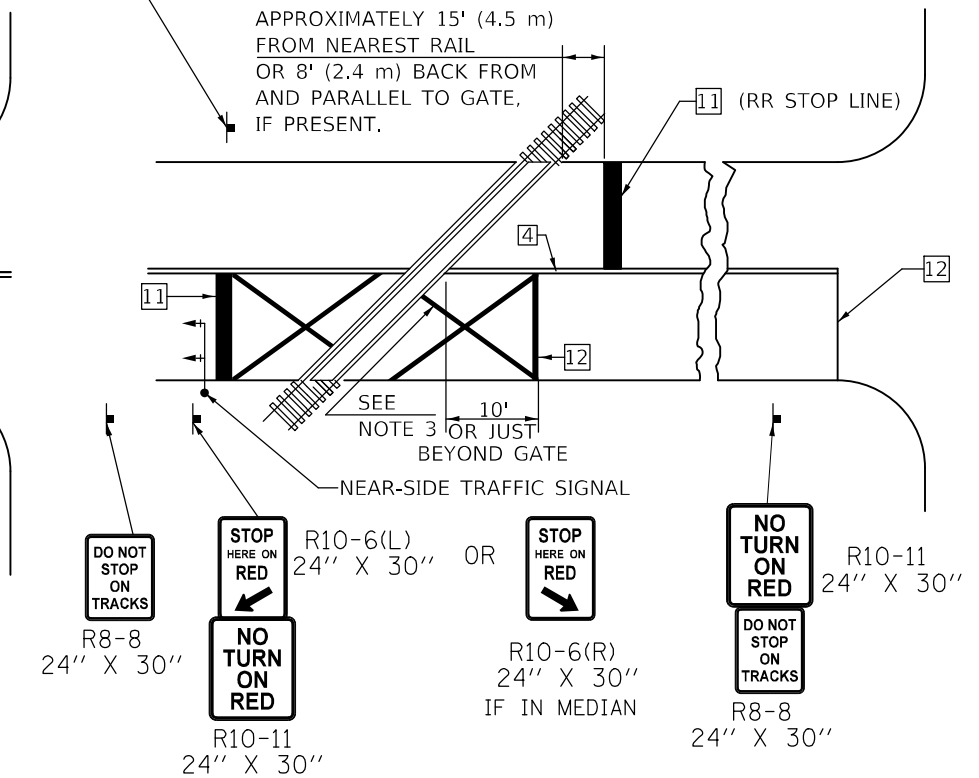
PAVEMENT MARKINGS AT RAILROAD-HIGHWAY GRADE CROSSING

RAILROAD CROSSING WITH INTERCONNECT ONLY



ONLY IF SIGNAL HEAD CANNOT BE LOCATED IN MEDIAN

RAILROAD CROSSING WITH INTERCONNECT AND PRE-SIGNALS



GENERAL NOTES

1. SUPPLEMENTAL PAVEMENT MARKINGS TO BE INSTALLED ONLY ON APPROACHES TO INTERSECTIONS CONTROLLED BY TRAFFIC SIGNALS WHICH ARE INTERCONNECTED WITH THE RAILROAD WARNING SIGNALS.
2. EXTEND PAVEMENT MARKINGS TO THE INTERSECTION ONLY WHERE NEAR-SIDE TRAFFIC SIGNALS ARE USED.
3. 6" WHITE PAVEMENT MARKINGS AT 45° TO PAVEMENT, 8' CENTER TO CENTER.
4. XX DISTANCE TO BE SHOWN ON SIGN MEASURED FROM A POINT 6 FEET FROM THE RAIL CLOSEST TO THE INTERSECTION OR FROM THE CLOSEST POINT ALONG THE EXIT GATE IF PRESENT OVER THE ROADWAY WHEN IN THE LOWERED POSITION TO THE STOP BAR OR CROSSWALK, WHICH EVER IS CLOSEST, ROUNDED DOWN TO NEAREST 5 FEET. WHERE THERE IS NO STOP LINE, MEASURE TO POINT WHERE DRIVER HAS A VIEW OF APPROACHING TRAFFIC.
5. THE CLEARANCE SIGN IS ALSO TO BE USED AS AN INTERIM MEASURE AT LOCATIONS WITH INTERCONNECTED INTERSECTION TRAFFIC SIGNALS WHERE IT IS PLANNED TO CHANGE THEM TO NEAR-SIDE SIGNALS AT A FUTURE TIME. IN THIS CASE, THE DISTANCE TO BE SHOWN ON THE SIGN IS MEASURED FROM THE EDGE OF THE STRIPED-OUT AREA INSTEAD OF 6 FEET FROM THE RAIL. THE SIGN IS TO BE REMOVED WHEN THE NEAR-SIDE SIGNALS ARE INSTALLED AND THE PAVEMENT MARKINGS EXTENDED TO THE INTERSECTION.

SUPPLEMENTAL PAVEMENT MARKING TREATMENT FOR RAILROAD-HIGHWAY GRADE CROSSING

ALTERNATE SIGNS



NOTES

THE TRAVERSE SPREAD OF THE "X" MAY VARY ACCORDING TO LANE WIDTH.

ON MULTI-LANE ROADS, THE STOP LINES SHALL EXTEND ACROSS ALL APPROACH LANES AND SEPARATE RXR SYMBOLS SHALL BE PLACED ADJACENT TO EACH OTHER IN EACH LANE.

WHEN THE PAVEMENT MARKING SYMBOL IS USED, A PORTION OF THE SYMBOL SHOULD BE LOCATED DIRECTLY ADJACENT TO THE ADVANCE WARNING SIGN (W10-1) AS PLACED BY TABLE II-1, CONDITION B OF THE MUTCD.

Note: All dimensions are in INCHES (millimeters) unless otherwise shown.

DISTRICT 5 DETAIL NO. 7800AAAA

STATE OF ILLINOIS DEPARTMENT OF TRANSPORTATION

PAVEMENT MARKING AND MARKERS (RURAL & URBAN APPLICATIONS)

USER NAME = PlersonTJ	DESIGNED -	REVISED - 11/06
	DRAWN -	REVISED - 9/2009 KJT
PLOT SCALE = 40,0000 * / in.	CHECKED -	REVISED - 04/14 JLA
PLOT DATE = 1/18/2022	DATE -	REVISED - 3/2019 SWN

SCALE: SHEET 4 OF 4 SHEETS STA. TO STA.

F.A.P. RTE.	SECTION	COUNTY	TOTAL SHEETS	SHEET NO.
741	(101.71)	PIATT	27	26
CONTRACT NO. 70F69				

MODEL: \\MODEL\MAR\F... FILE NAME: p:\pub\c-pa... PROJECT: D:\570569\CADD\DATA\CADD\DETAILS\0570569-Sub-Detail.dwg

