

04-29-2022 LETTING ITEM 052

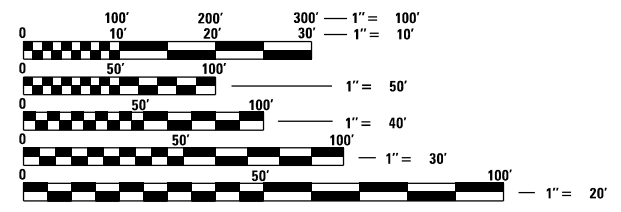
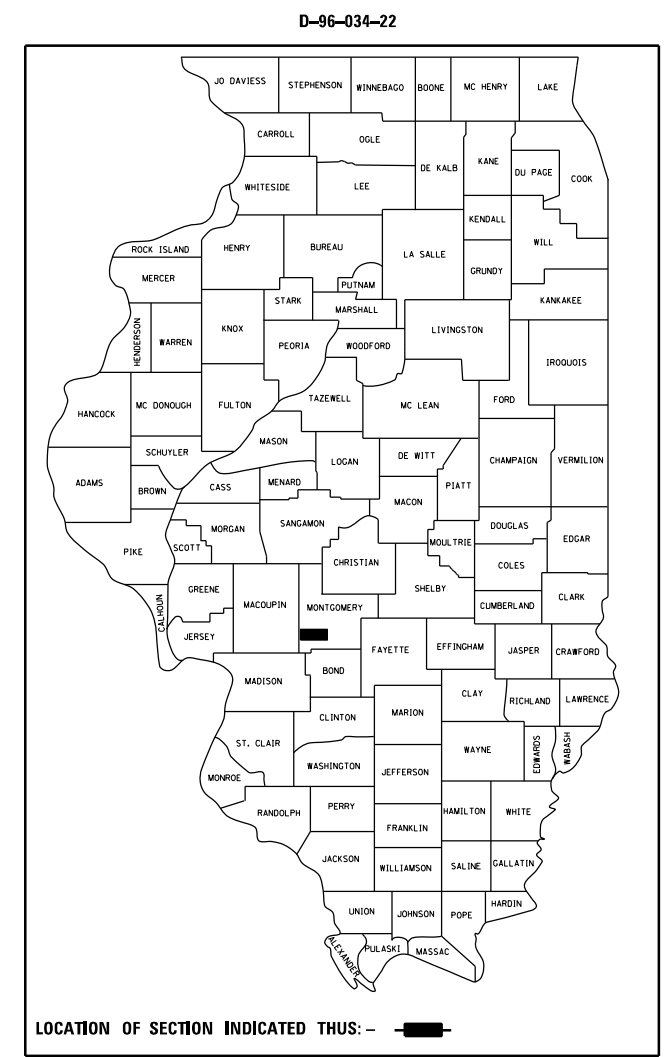
STATE OF ILLINOIS
 DEPARTMENT OF TRANSPORTATION

FOR INDEX OF SHEETS, SEE SHEET NO. 2

PROPOSED IMPROVEMENTS

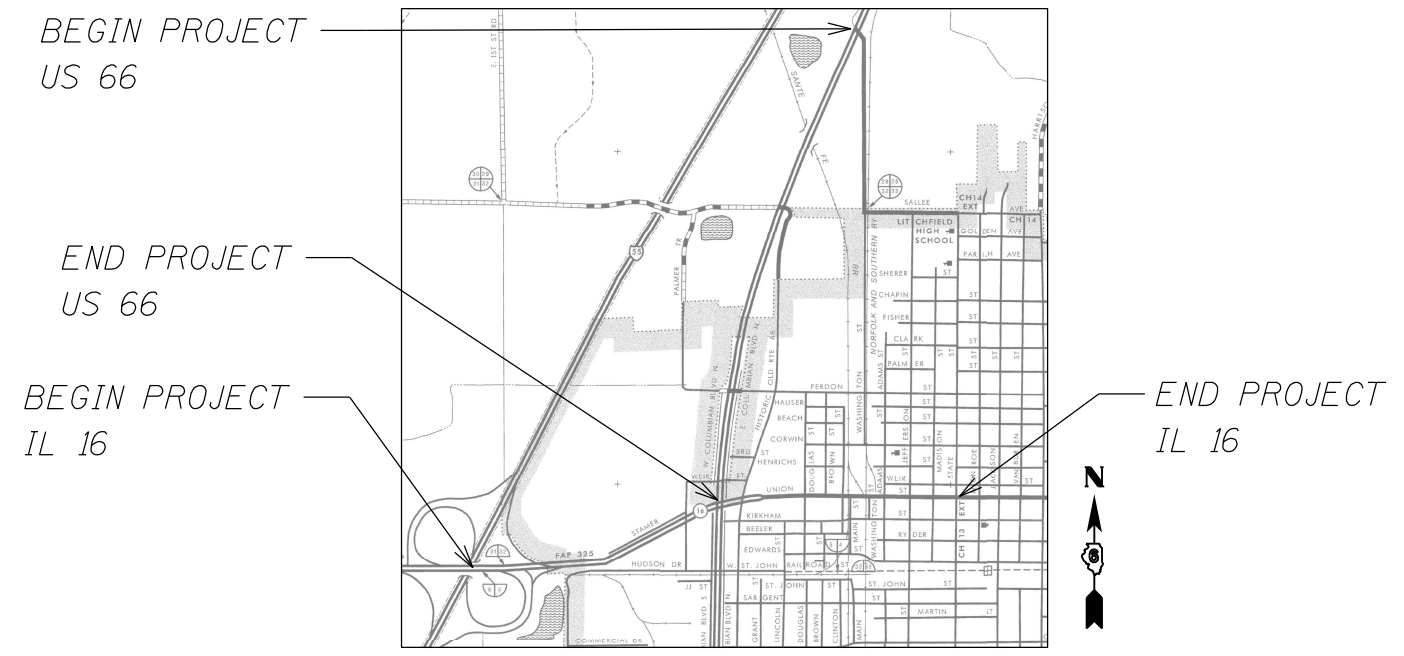
**VARIOUS ROUTES (FAP 325, FAS 1768, FAU 8239)
 (IL 16, US 66)
 SECTION D6 ITS 2022-1**

**MONTGOMERY CO.
 C-96-042-22**



FULL SIZE PLANS HAVE BEEN PREPARED USING STANDARD ENGINEERING SCALES. REDUCED SIZED PLANS WILL NOT CONFORM TO STANDARD SCALES. IN MAKING MEASUREMENTS ON REDUCED PLANS, THE ABOVE SCALES MAY BE USED.

J.U.L.I.E.
 JOINT UTILITY LOCATION INFORMATION FOR EXCAVATION
 1-800-892-0123
 OR 811



PROJECT ENGINEER : STEVE BERAN - (217)782-7314
 PROJECT MANAGER : TIM SHARP - (217)524-9160

CONTRACT NO. 72809

STATE OF ILLINOIS
 DEPARTMENT OF TRANSPORTATION
 SUBMITTED January 21, 2022
 [Signature] REGION FOUR ENGINEER
 March 25, 2022 [Signature] ENGINEER OF DESIGN AND ENVIRONMENT
 March 2, 2022 [Signature] DIRECTOR OF HIGHWAYS PROJECT IMPLEMENTATION

PRINTED BY THE AUTHORITY OF THE STATE OF ILLINOIS

INDEX OF SHEETS

- 1 COVER SHEET
- 2 INDEX OF SHEETS, GENERAL NOTES, SIGNATURES, STANDARDS
- 3 SUMMARY OF QUANTITIES
- 4 LEGEND AND NOTES
- 5 LOCATION PLAN
- 6-13 PLANS
- 14-15 DETAILS
- 16-20 VIDEO VEHICLE DETECTION PLAN

HIGHWAY STANDARDS

- 701001-02 OFF-RD OPERATIONS, 2L, 2W, MORE THAN 15' (4.5 m) AWAY
- 701006-05 OFF-RD OPERATIONS, 2L, 2W, 15' (4.5 m) TO 24" (600mm) FROM PAVEMENT EDGE
- 701101-05 OFF-RD OPERATIONS, MULTILANE, 15' (4.5 m) TO 24" (600mm) FROM EDGE OF PAVEMENT
- 701106-02 OFF-RD OPERATIONS, MULTILANE, MORE THAN 15' (4.5m) AWAY
- 701201-05 LANE CLOSURE, 2L, 2W, DAY ONLY, FOR SPEEDS > 45 MPH
- 701502-09 URBAN LANE CLOSURE, 2L, 2W, WITH BIDIRECTIONAL LEFT TURN LANE
- 701601-09 URBAN LANE CLOSURE, MULTILANE, 1W OR 2W WITH NONTRANSVERSABLE MEDIAN
- 701602-10 URBAN LANE CLOSURE, MULTILANE, 2W WITH BIDIRECTIONAL LEFT TURN LANE
- 701701-10 URBAN LANE CLOSURE, MULTILANE INTERSECTION
- 701901-08 TRAFFIC CONTROL DEVICES
- 000001-08 STANDARD SYMBOLS, ABBREVIATIONS AND PATTERNS
- 001006 DECIMAL OF AN INCH AND OF A FOOT
- 805001-01 ELECTRICAL SERVICE INSTALLATION DETAILS
- 812001-01 RACEWAYS EMBEDDED IN STRUCTURE
- 814001-03 HANDHOLES
- 857001-01 STANDARD PHASE DESIGNATION DIAGRAMS AND PHASE SEQUENCES

**STATE OF ILLINOIS
DEPARTMENT OF TRANSPORTATION
DIVISION OF HIGHWAYS
DISTRICT 6**

EXAMINED January 27 20 22
[Signature]
ENGINEER OF OPERATIONS

EXAMINED January 27 20 22
[Signature]
ENGINEER OF PROJECT IMPLEMENTATION

EXAMINED January 27 20 22
[Signature]
ENGINEER OF PROGRAM DEVELOPMENT

REV. - MS

FILE NAME =	USER NAME = sharptd	DESIGNED - DMS 2/2017	REVISED -	STATE OF ILLINOIS DEPARTMENT OF TRANSPORTATION	INDEX OF SHEETS, GENERAL NOTES, SIGNATURES	F.A.P. RTE.	SECTION	COUNTY	TOTAL SHEETS	SHEET NO.	
S:\CONTRMAINT_CAD\72809 - ITS Litahfield	Montgomery Co\PLANS\72809-sht-2-gennotes	DRAWN - DMS 2/2017	REVISED -			ITS D6 2022-1	MONTGOMERY	20	2		
Default	PLOT SCALE = 40,0000' / in.	CHECKED -	REVISED -			CONTRACT NO. 72809		ILLINOIS FED. AID PROJECT			
	PLOT DATE = 1/21/2022	DATE -	REVISED -			SCALE:	SHEET 1 OF 1 SHEETS	STA.	TO STA.		

*FAP 325, FAS 1768, FAU 8239 (IL 16, US 66)

6-00338-9981
100% STATE
MONT.
ROADWAY
0043
URBAN

CODE NO.	ITEM	UNIT	TOTAL QUANTITY	
42400100	PORTLAND CEMENT CONCRETE SIDEWALK 4 INCH	SQ FT	40	40
44000600	SIDEWALK REMOVAL	SQ FT	40	40
67100100	MOBILIZATION	L SUM	1	1
70100450	TRAFFIC CONTROL AND PROTECTION, STANDARD 701201	L SUM	1	1
70102622	TRAFFIC CONTROL AND PROTECTION, STANDARD 701502	L SUM	1	1
70102630	TRAFFIC CONTROL AND PROTECTION, STANDARD 701601	L SUM	1	1
70102632	TRAFFIC CONTROL AND PROTECTION, STANDARD 701602	L SUM	1	1
70102635	TRAFFIC CONTROL AND PROTECTION, STANDARD 701701	L SUM 1	1	1
80500100	SERVICE INSTALLATION, TYPE A	EACH	1	1
81028340	UNDERGROUND CONDUIT, PVC, 1 1/2" DIA.	FOOT	13831	13831
81028350	UNDERGROUND CONDUIT, PVC, 2" DIA.	FOOT	1535	1535
81100600	CONDUIT ATTACHED TO STRUCTURE, 2" DIA. GALVANIZED STEEL	FOOT	20	20
81702130	ELECTRIC CABLE IN CONDUIT, 600V (XLP-TYPE USE) 1/C NO. 6	FOOT	4719	4719

6-00338-9981
100% STATE
MONT.
ROADWAY
0043
URBAN

CODE NO.	ITEM	UNIT	TOTAL QUANTITY	
85706000	INTERSECTION MONITOR UNIT	EACH	7	7
87301705	ELECTRIC CABLE IN CONDUIT, COMMUNICATION NO. 18 3 PAIR	FOOT	5000	5000
87900200	DRILL EXISTING HANDHOLE	EACH	13	13
89502210	MODIFY EXISTING CONTROLLER CABINET	EACH	7	7
X0324597	CLOSED CIRCUIT TELEVISION CABINET	EACH	1	1
X0326266	ETHERNET SWITCH	EACH	7	7
X0326812	CAT 5 ETHERNET CABLE	FOOT	241	241
X0326905	CLOSED CIRCUIT TELEVISION DOME CAMERA, IP BASED	EACH	2	2
X1400076	COBALT CONTROLLER	EACH	8	8
X8140105	HANDHOLE (SPECIAL)	EACH	24	24
X8710029	FIBER OPTIC CABLE 24 FIBERS, SINGLE MODE	FOOT	16349	16349
Z0010688	CAMERA MOUNTING ASSEMBLY	EACH	22	22
Z0033072	VIDEO VEHICLE DETECTION SYSTEM	EACH	5	5

FILE NAME =	USER NAME = sharptd	DESIGNED - _____	REVISED - _____
S:\CONTRMAINT_CAD\72809 - ITS Litchfield	Montgomery Co\PLANS\72809-sht-3-500.dgn	DRAWN - DMS	REVISED - _____
Default	PLOT SCALE = 40.0000' / in.	CHECKED - _____	REVISED - _____
	PLOT DATE = 2/18/2022	DATE - _____	REVISED - _____

STATE OF ILLINOIS
DEPARTMENT OF TRANSPORTATION

SUMMARY OF QUANTITIES

SCALE: _____ SHEET ____ OF ____ SHEETS STA. _____ TO STA. _____

*FAP 325, FAS 1768, FAU 8239 (IL 16, US 66)

F.A. RTE.	SECTION	COUNTY	TOTAL SHEETS	SHEET NO.
*	D6 ITS 2022-1	MONRGOMERY	20	3
CONTRACT NO. 72809			ILLINOIS FED. AID PROJECT	

GENERAL NOTES

LEGEND

- R REMOVE
- RR REMOVE AND REPLACE
- ◻ EXISTING HANDHOLE
- ◻◻ EXISTING DOUBLE HANDHOLE
- ◻◻ EXISTING CONTROLLER
- ◻◻ PROPOSED HANDHOLE
- ◻◻ PROPOSED CCTV CAMERA
- ◻◻ EXISTING GULF BOX JUNCTION
- EXISTING CONDUIT
- PROPOSED CONDUIT
- ◻◻ VIDEO VEHICLE DETECTION SYSTEM

- 1 CCTV ARE LOCATION SENSITIVE. PROPOSED EQUIPMENT LOCATIONS ARE APPROXIMATE. TO ENSURE THE OPTIMUM FIELD OF VIEW, ACTUAL LOCATIONS SHALL BE DETERMINED IN THE FIELD BY THE CONTRACTOR, PER THE MANUFACTURER REPRESENTATIVES RECOMMENDATIONS AND THE ENGINEERS APPROVAL.
- 2 PLAN ELEVATIONS - U.S.G.S. MEAN SEA LEVEL DATUM.
- 3 ALL ELEVATIONS SHOWN ON THE PLANS ARE ESTABLISHED FORM U.S.G.S. MEAN SEA LEVEL DATUM.
- 4 U-BOLTS SHALL BE PRODUCED FROM ASTM A276, TYPE 304, 304L, 316, CONDITION A , COLD FINISH, OR AN EQUIVALENT MATERIAL ACCEPTABLE TO THE ENGINEER. ALL NUTS SHALL BE STAINLESS STEEL CONFORMING TO ASTM A194, GRADE 8 (AISI TYPE 304) OR GRADE 8F (AISI TYPE 303). THE NUTS SHALL BE LOCKNUTS WITH NYLON OR STEEL INSERTS AND SEMI FINISHED HEXAGONAL HEADS EQUIVALENT TO THE FINISHED HEX SERIES OF THE AMERICAN NATIONAL STANDARD. ALL WASHERS SHALL BE STAINLESS STEEL CONFORMING TO ASTM 240, TYPE 302 OR 304.
- 5 ALL BOLTS, SCREWS, NUTS AND WASHERS SHALL BE STAINLESS STEEL. ANTI-SEIZE PASTE COMPOUND SHALL BE USED ON ALL MOUNTING HARDWARE FIELD CONNECTIONS. ALL CCTV MOUNTING METHODS AND MOUNTING MATERIAL SHALL BE PRE- APPROVED BY THE ENGINEER.
- 6 UNDERGROUND CABLE MARKING TAPE SHALL BE INSTALLED WITH ALL TRENCH & BACKFILL FOR ELECTRICAL WORK IN ACCORDANCE WITH ARTICLES 815.03 (d) & 1066.05 OF THE STANDARD SPECIFICATIONS.
- 7 A 1/4" DIA. NYLON ROPE SHALL BE INSTALLED IN ALL CONDUIT RUNS. THE COST OF PULL ROPE SHALL BE INCLUDED IN THE PROPOSED ELECTRIC CABLE INSTALLATION IN THAT CONDUIT.
- 8 THE CONTRACTOR SHALL NOT DRILL ANY HOLES IN THE BEAMS, DECK, OR SUBSTRUCTURE OF THE BRIDGE, UNLESS OTHERWISE APPROVED BY THE ENGINEER.
- 9 ALL GROUND RODS SUPPLIED FOR THIS PROJECT SHALL BE 3/4" DIAMETER X 12'-0" LONG.
- 10 THE LOCATION OF EXISTING WATER MAINS, GAS MAINS, SEWERS, ELECTRIC POWER LINES, TELEPHONE LINES AND OTHER UTILITIES AS SHOWN ON THE PLANS ARE BASED ON CAREFUL FIELD INVESTIGATION AND THE BEST INFORMATION AVAILABLE, BUT THEY ARE NOT GUARANTEED. IT SHALL BE THE CONTRACTOR'S RESPONSIBILITY TO ASCERTAIN THEIR EXACT LOCATION FROM THE UTILITY COMPANIES AND BY FIELD INSPECTION.
- 11 ALL UTILITIES SHALL BE LOCATED IN FIELD PRIOR TO ANY ATTEMPT TO CONSTRUCT ANY COMPONENT OF THE VARIOUS CCTV CAMERA SYSTEM. ILLINOIS STATE LAW REQUIRES A 48-HOUR NOTICE BE GIVEN TO UTILITIES BEFORE DIGGING. FIELD MARKING OF FACILITIES MAY BE OBTAINED BY PROVIDING A MINIMUM OF 96-HOURS ADVANCE NOTICE TO THE RESIDENT ENGINEER SO THAT THE UTILITY COMPANIES CAN BE NOTIFIED.
- 12 COORDINATION WITH THE DEPARTMENTS BUREAU OF OPERATIONS IS REQUIRED BEFORE ANY TRENCHING SHALL BE DONE TO LOCATE HIGHWAY LIGHTING/PUMP STATION FACILITIES. PH: (217)558-6716 OR (217)622-0608.
- 13 THE AREAS THAT ARE DISTURBED DUE TO THE DIGGING OR TRENCHING SHALL BE COMPLETED ON A WEEKLY BASIS USING SEEDING, CLASS 2 AND MULCH METHOD 1 AND SHALL CONFORM TO THE REQUIREMENTS OF SECTION 251 OF THE STANDARD SPECIFICATIONS EXCEPT THAT NO EMULSIFIED ASPHALT SHALL BE USED. THE COST SHALL BE INCIDENTAL TO THE CONTRACT.
- 14 THE CONTRACTOR MUST COORDINATE AND COOPERATE WITH THE DEPARTMENT AND THE INVOLVED PARTIES AS DIRECTED BY THE DEPARTMENT
- 15 EXISTING CONDUIT AND PULL POINT LOCATIONS TAKEN FROM HISTORICAL DATA. CONTRACTOR SHALL FIELD VERIFY EXISTING CONDUIT SIZES AND LOCATIONS PRIOR TO INSTALLING PROPOSED FIBER OPTIC CABLE WITHIN EXISTING CONDUIT.
- 16 BENDING RADIUS OF FIBER OPTIC CABLE SHALL NOT EXCEED SIX (6) INCHES.
- 17 EXACT FIELD LOCATIONS OF ITS EQUIPMENT SHALL BE AS DIRECTED BY THE ENGINEER. THE CONTRACTOR SHALL TAKE CARE NOT TO INSTALL ITS EQUIPMENT IN DRAINAGE AREAS.
- 18 THE CONTRACTOR SHALL SUBMIT SHOP DRAWINGS, CONSTRUCTION METHODOLOGIES, PRODUCT MANUFACTURER SPECIFICATIONS, OWNERS MANUALS, AND USER MANUALS BEFORE PROCURING AND INSTALLING ANY ITS EQUIPMENT AS PART OF THIS CONTRACT. ALL PROPOSED ITS WORK SHALL BE REVIEWED AND APPROVED BY THE DEPARTMENT.
- 19 THE CONTRACTOR SHALL BE RESPONSIBLE FOR COORDINATING TRAFFIC CONTROL FOR THE INSTALLATION OF ITS RELATED EQUIPMENT WITH OTHER CONTRACTS AND WORK IN THE AREA.

•FAP 325, FAS 1768, FAU 8239 (IL 16, US 66)

FILE NAME =	USER NAME = sharptd	DESIGNED - _____	REVISED - _____	STATE OF ILLINOIS DEPARTMENT OF TRANSPORTATION	LEGEND AND NOTES	F.A. RTE.	SECTION	COUNTY	TOTAL SHEETS	SHEET NO.	
S:\CONTRMAINT_CAD\72809 - ITS Litchfield	Montgomery Co\PLANS\72809-sht-4-abr-leg	DRAWN - _____	REVISED - _____			•	D6 ITS 2022-1	MONTGOMERY	20	4	
Default	PLOT SCALE = 1.0000' / in.	CHECKED - _____	REVISED - _____			CONTRACT NO. 72809					
	PLOT DATE = 1/21/2022	DATE - _____	REVISED - _____			ILLINOIS FED. AID PROJECT					

SCALE: _____ SHEET _____ OF _____ SHEETS STA. _____ TO STA. _____



BEGIN PROJECT
US 66

END PROJECT
US 66

BEGIN PROJECT
IL 16

END PROJECT
IL 16



FILE NAME =	USER NAME = sharptd	DESIGNED - _____	REVISED - _____
S:\CONTRMAINT_CAD\72809 - ITS Litchfield	- Montgomery Co\PLANS\72809-sht-5-plans.dgn	DRAWN - _____	REVISED - _____
Default	PLOT SCALE = 40.0000' / in.	CHECKED - _____	REVISED - _____
	PLOT DATE = 1/21/2022	DATE - _____	REVISED - _____

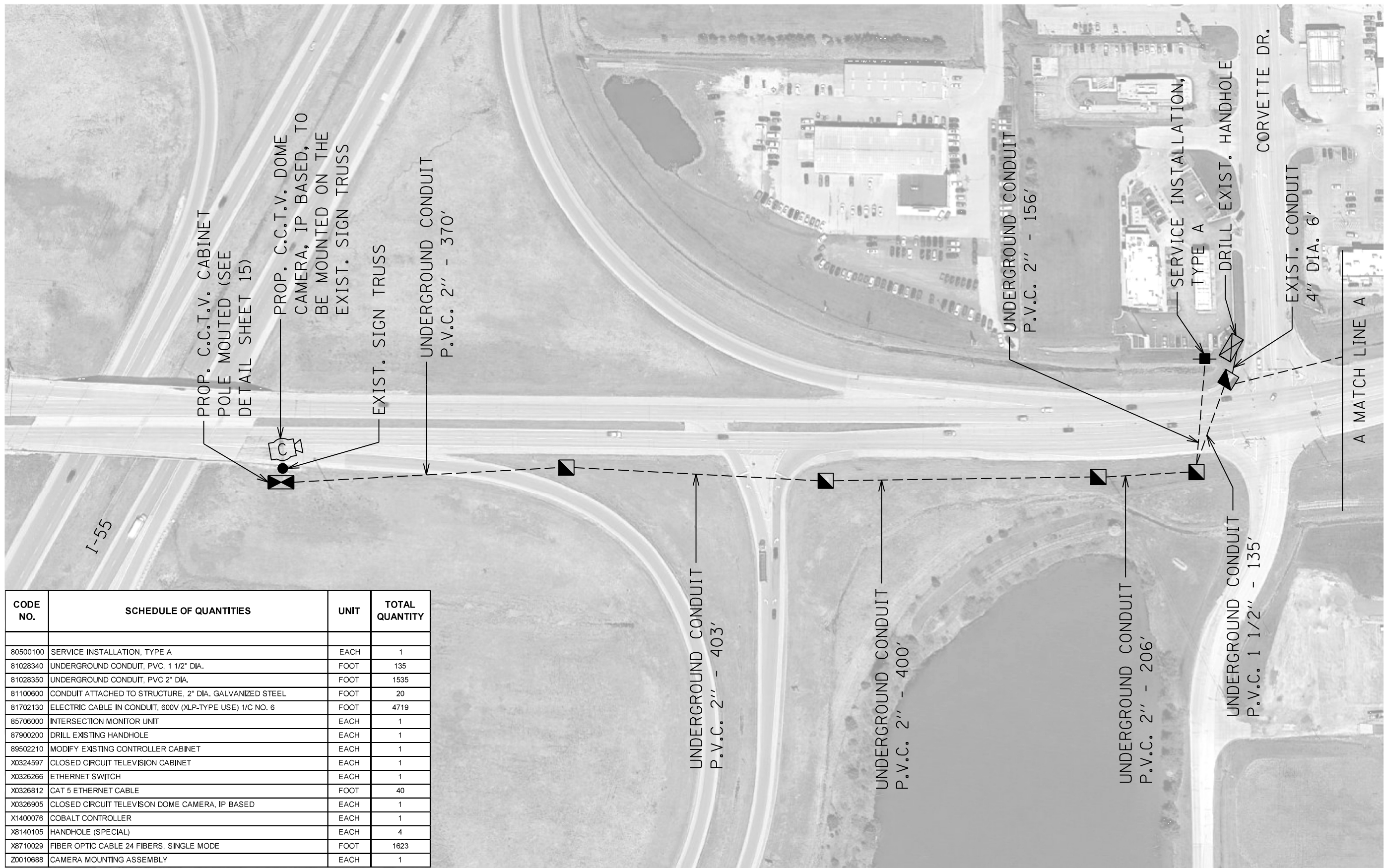
**STATE OF ILLINOIS
DEPARTMENT OF TRANSPORTATION**

LOCATION MAP

SCALE: _____ SHEET ____ OF ____ SHEETS STA. _____ TO STA. _____

•FAP 325, FAS 1768, FAU 8239 (IL 16, US 66)		F.A. RTE.	SECTION	COUNTY	TOTAL SHEETS	SHEET NO.
		•	D6 ITS 2022-1	MONTGOMERY	20	5
					CONTRACT NO. 72809	
ILLINOIS FED. AID PROJECT						

MODEL: D:\p1\h\...
 FILE NAME: S:\CONTRACTS\...
 MONITORING: CoP\AS\72809-shd-6-13-fiber-pln.dgn



CODE NO.	SCHEDULE OF QUANTITIES	UNIT	TOTAL QUANTITY
80500100	SERVICE INSTALLATION, TYPE A	EACH	1
81028340	UNDERGROUND CONDUIT, PVC, 1 1/2" DIA.	FOOT	135
81028350	UNDERGROUND CONDUIT, PVC 2" DIA.	FOOT	1535
81100600	CONDUIT ATTACHED TO STRUCTURE, 2" DIA. GALVANIZED STEEL	FOOT	20
81702130	ELECTRIC CABLE IN CONDUIT, 600V (XLP-TYPE USE) 1/C NO. 6	FOOT	4719
85706000	INTERSECTION MONITOR UNIT	EACH	1
87900200	DRILL EXISTING HANDHOLE	EACH	1
89502210	MODIFY EXISTING CONTROLLER CABINET	EACH	1
X0324597	CLOSED CIRCUIT TELEVISION CABINET	EACH	1
X0326266	ETHERNET SWITCH	EACH	1
X0326812	CAT 5 ETHERNET CABLE	FOOT	40
X0326905	CLOSED CIRCUIT TELEVISION DOME CAMERA, IP BASED	EACH	1
X1400076	COBALT CONTROLLER	EACH	1
X8140105	HANDHOLE (SPECIAL)	EACH	4
X8710029	FIBER OPTIC CABLE 24 FIBERS, SINGLE MODE	FOOT	1623
Z0010688	CAMERA MOUNTING ASSEMBLY	EACH	1

REV. - MS

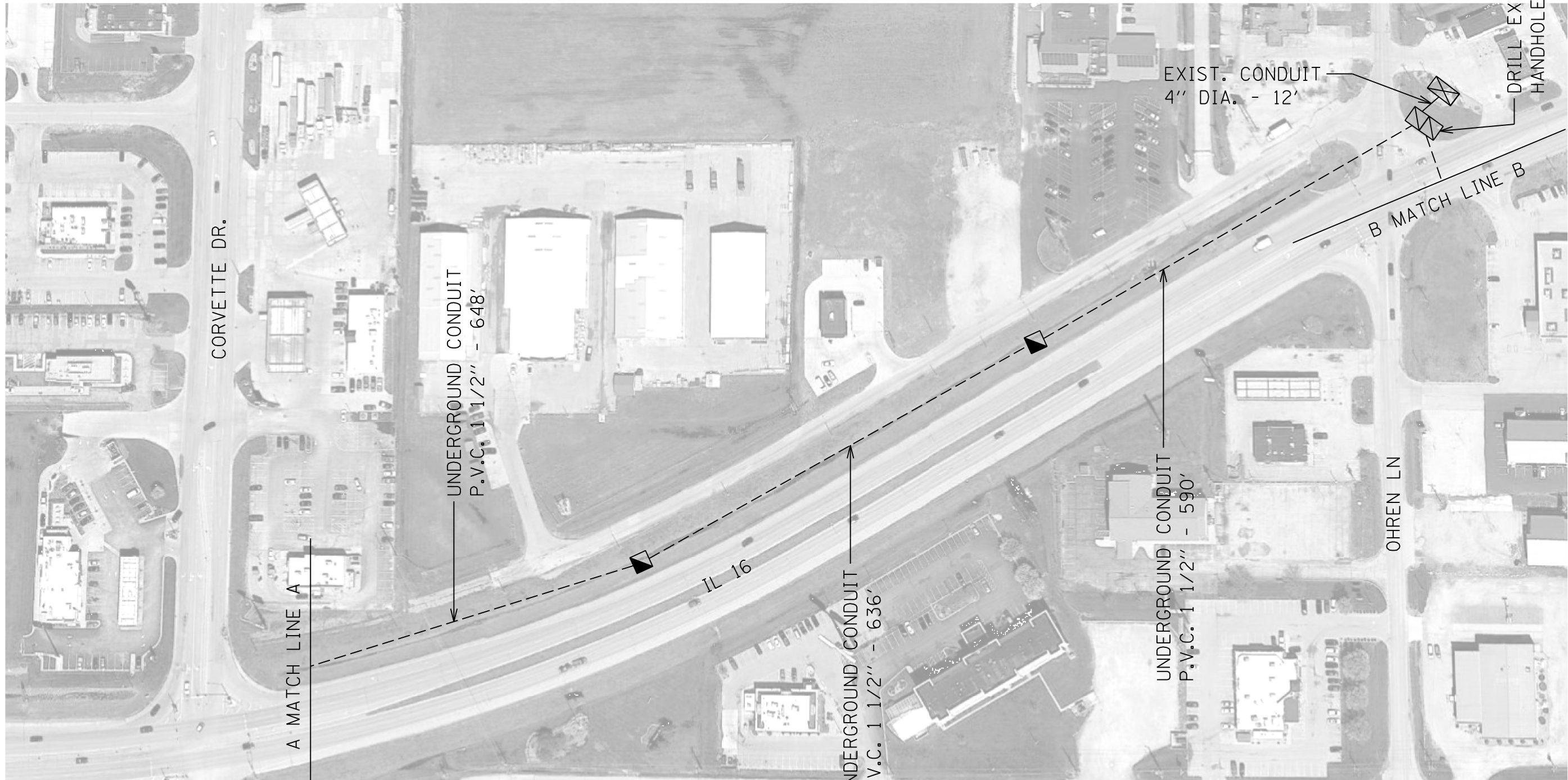
USER NAME = sharptd	DESIGNED - _____	REVISED - _____
PLOT SCALE = 1.0000' / in.	DRAWN - _____	REVISED - _____
PLOT DATE = 1/21/2022	CHECKED - _____	REVISED - _____
	DATE - _____	REVISED - _____

**STATE OF ILLINOIS
 DEPARTMENT OF TRANSPORTATION**

PLAN	
SCALE: _____	SHEET _____ OF _____ SHEETS
STA. _____	TO STA. _____

*FAP 325, FAS 1768, FAU 8239 (IL 16, US 66)				
F.A. RTE.	SECTION	COUNTY	TOTAL SHEETS	SHEET NO.
	D6 ITS 2022-1	MONTGOMERY	20	6
			CONTRACT NO. 72809	
ILLINOIS FED. AID PROJECT				

MODEL: D:\p\h\...
 FILE NAME: S:\CONTRACT\CA072809 - ITS Lic\field - Montgomery Co\PLANS\72809-shd-6-13-fiber-pln.dwg



CODE NO.	SCHEDULE OF QUANTITIES	UNIT	TOTAL QUANTITY
81028340	UNDERGROUND CONDUIT, PVC, 1 1/2" DIA.	FOOT	1874
85706000	INTERSECTION MONITOR UNIT	EACH	1
87900200	DRILL EXISTING HANDHOLE	EACH	2
89502210	MODIFY EXISTING CONTROLLER CABINET	EACH	1
X0326266	ETHERNET SWITCH	EACH	1
X1400076	COBALT CONTROLLER	EACH	1
X8140105	HANDHOLE (SPECIAL)	EACH	2
X8710029	FIBER OPTIC CABLE 24 FIBERS, SINGLE MODE	FOOT	1988

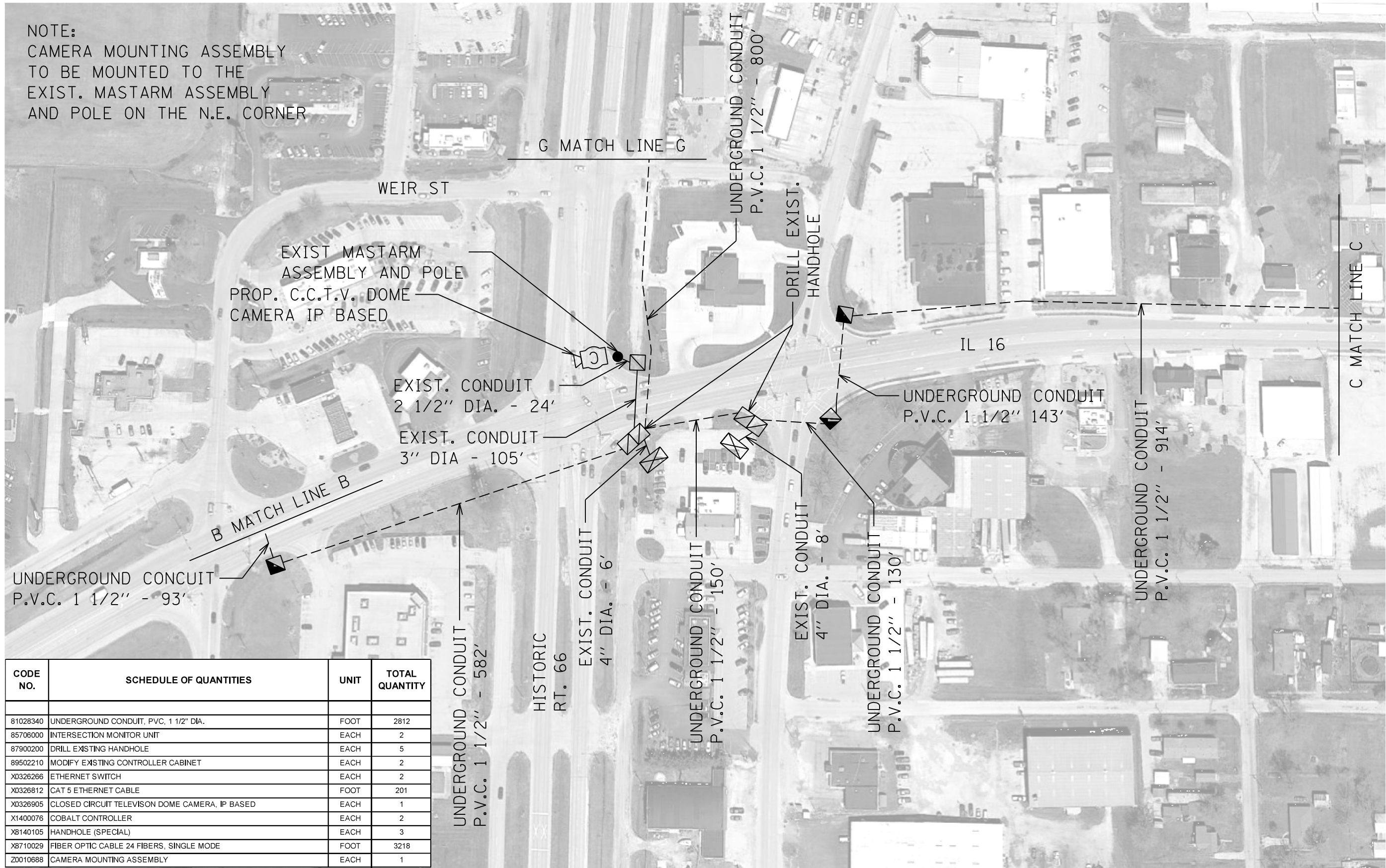
USER NAME = sharptd	DESIGNED - _____	REVISED - _____
PLOT SCALE = 1.0000' / in.	DRAWN - _____	REVISED - _____
PLOT DATE = 1/21/2022	CHECKED - _____	REVISED - _____
	DATE - _____	REVISED - _____

**STATE OF ILLINOIS
 DEPARTMENT OF TRANSPORTATION**

PLAN	
SCALE: _____	SHEET ____ OF ____ SHEETS
STA. _____	TO STA. _____

F.A. RTE.	SECTION	COUNTY	TOTAL SHEETS	SHEET NO.
*	D6 ITS 2022-1	MONTGOMERY	20	7
			CONTRACT NO. 72809	
		ILLINOIS	FED. AID PROJECT	

NOTE:
CAMERA MOUNTING ASSEMBLY
TO BE MOUNTED TO THE
EXIST. MASTARM ASSEMBLY
AND POLE ON THE N.E. CORNER



CODE NO.	SCHEDULE OF QUANTITIES	UNIT	TOTAL QUANTITY
81028340	UNDERGROUND CONDUIT, PVC, 1 1/2" DIA.	FOOT	2812
85706000	INTERSECTION MONITOR UNIT	EACH	2
87900200	DRILL EXISTING HANDHOLE	EACH	5
89502210	MODIFY EXISTING CONTROLLER CABINET	EACH	2
X0326266	ETHERNET SWITCH	EACH	2
X0326812	CAT 5 ETHERNET CABLE	FOOT	201
X0326905	CLOSED CIRCUIT TELEVISION DOME CAMERA, IP BASED	EACH	1
X1400076	COBALT CONTROLLER	EACH	2
X8140105	HANDHOLE (SPECIAL)	EACH	3
X8710029	FIBER OPTIC CABLE 24 FIBERS, SINGLE MODE	FOOT	3218
Z0010688	CAMERA MOUNTING ASSEMBLY	EACH	1

MODEL: D:\p\h\... FILE NAME: S:\CONTRACT\CA072809 - ITS Lic\field - Montgomery Co\PLANS\72809-shd-6-13-fiber-pln.dwg

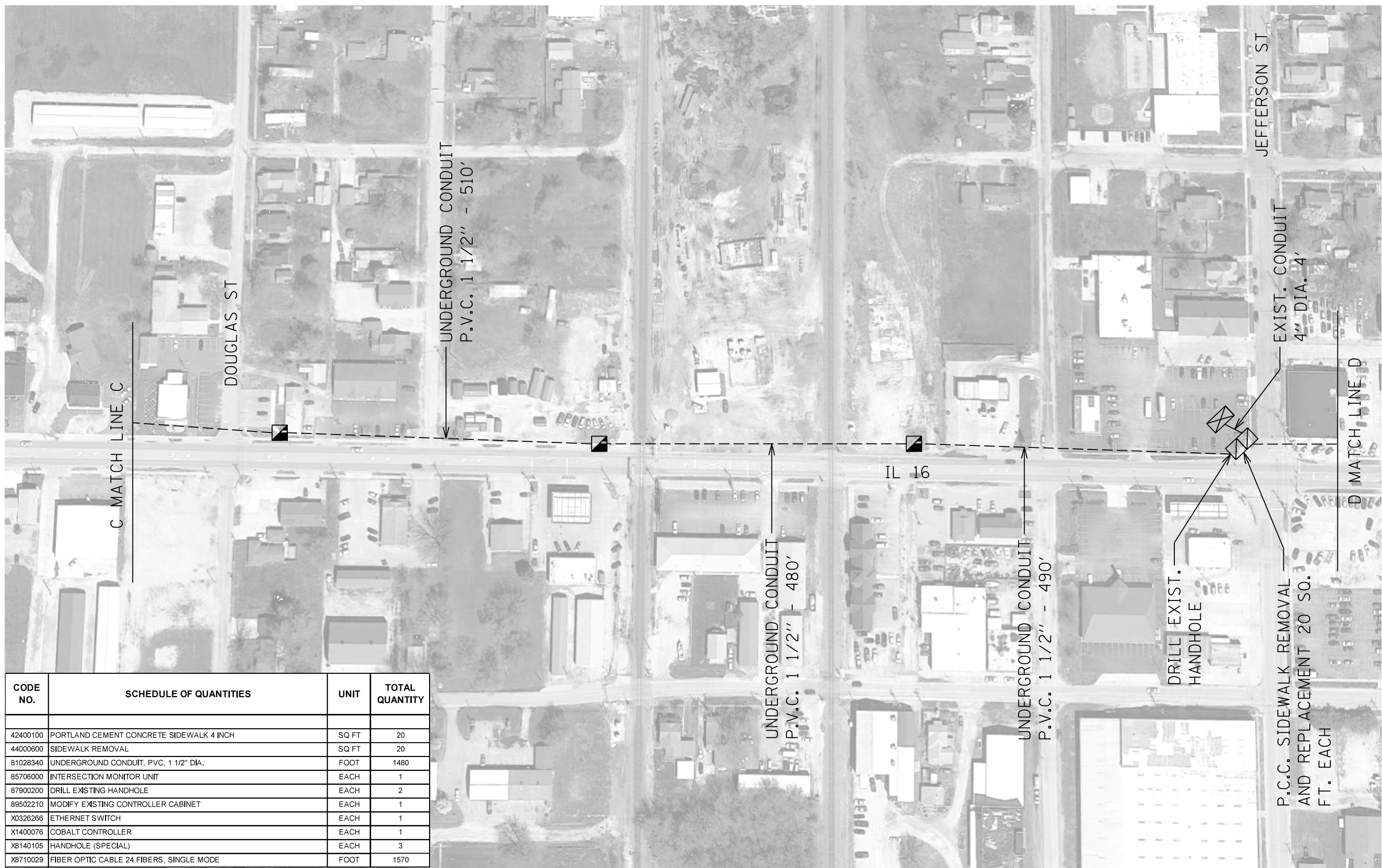
USER NAME = sharptd	DESIGNED - _____	REVISED - _____
PLOT SCALE = 1.0000' / in.	DRAWN - _____	REVISED - _____
PLOT DATE = 1/21/2022	CHECKED - _____	REVISED - _____
	DATE - _____	REVISED - _____

**STATE OF ILLINOIS
DEPARTMENT OF TRANSPORTATION**

PLAN	
SCALE: _____	SHEET _____ OF _____ SHEETS
STA. _____	TO STA. _____

F.A. RTE.	SECTION	COUNTY	TOTAL SHEETS	SHEET NO.
*	D6 ITS 2022-1	MONTGOMERY	20	8
			CONTRACT NO. 72809	
ILLINOIS FED. AID PROJECT				

MODEL: D:\p\h\...
 FILE NAME: S:\CONTRACT\CA072809 - ITS Lic\field - Montgomery Co\PLANS\72809-shd-6-13-fiber-pln.dwg



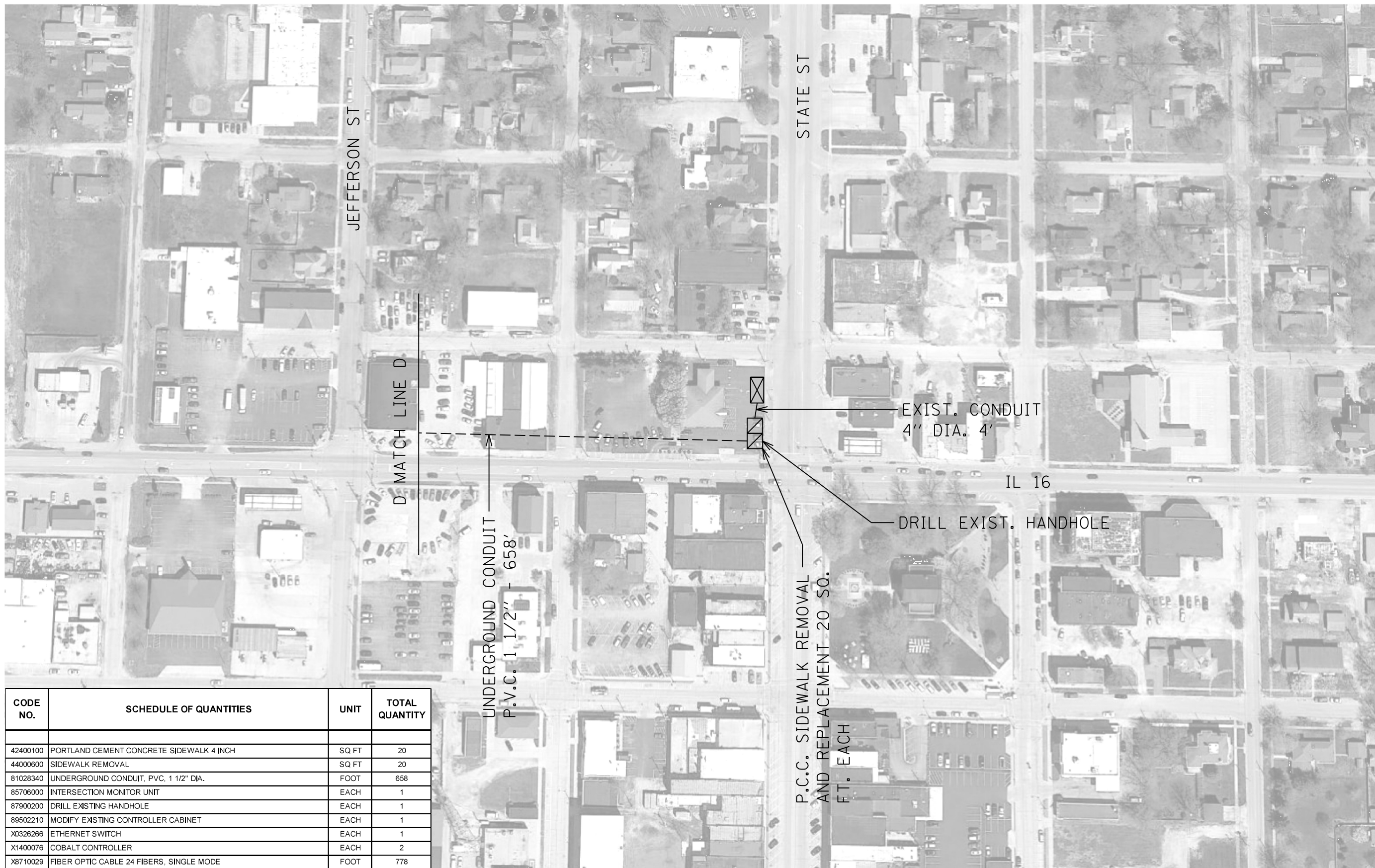
CODE NO.	SCHEDULE OF QUANTITIES	UNIT	TOTAL QUANTITY
42400100	PORTLAND CEMENT CONCRETE SIDEWALK 4 INCH	SQ FT	20
44000600	SIDEWALK REMOVAL	SQ FT	20
81028340	UNDERGROUND CONDUIT, PVC, 1 1/2" DIA.	FOOT	1480
85706000	INTERSECTION MONITOR UNIT	EACH	1
87900200	DRILL EXISTING HANDHOLE	EACH	2
89502210	MODIFY EXISTING CONTROLLER CABINET	EACH	1
X0326266	ETHERNET SWITCH	EACH	1
X1400076	COBALT CONTROLLER	EACH	1
X8140105	HANDHOLE (SPECIAL)	EACH	3
X8710029	FIBER OPTIC CABLE 24 FIBERS, SINGLE MODE	FOOT	1570

USER NAME = sharptd	DESIGNED - _____	REVISED - _____
PLOT SCALE = 1.0000' / in.	DRAWN - _____	REVISED - _____
PLOT DATE = 1/21/2022	CHECKED - _____	REVISED - _____
	DATE - _____	REVISED - _____

**STATE OF ILLINOIS
 DEPARTMENT OF TRANSPORTATION**

PLAN	
SCALE: _____	SHEET ____ OF ____ SHEETS
STA. _____	TO STA. _____

F.A. RTE.	SECTION	COUNTY	TOTAL SHEETS	SHEET NO.
*	D6 ITS 2022-1	MONTGOMERY	20	9
			CONTRACT NO. 72809	
		ILLINOIS FED. AID PROJECT		



CODE NO.	SCHEDULE OF QUANTITIES	UNIT	TOTAL QUANTITY
42400100	PORTLAND CEMENT CONCRETE SIDEWALK 4 INCH	SQ FT	20
44000600	SIDEWALK REMOVAL	SQ FT	20
81028340	UNDERGROUND CONDUIT, PVC, 1 1/2" DIA.	FOOT	658
85706000	INTERSECTION MONITOR UNIT	EACH	1
87900200	DRILL EXISTING HANDHOLE	EACH	1
89502210	MODIFY EXISTING CONTROLLER CABINET	EACH	1
X0326266	ETHERNET SWITCH	EACH	1
X1400076	COBALT CONTROLLER	EACH	2
X8710029	FIBER OPTIC CABLE 24 FIBERS, SINGLE MODE	FOOT	778

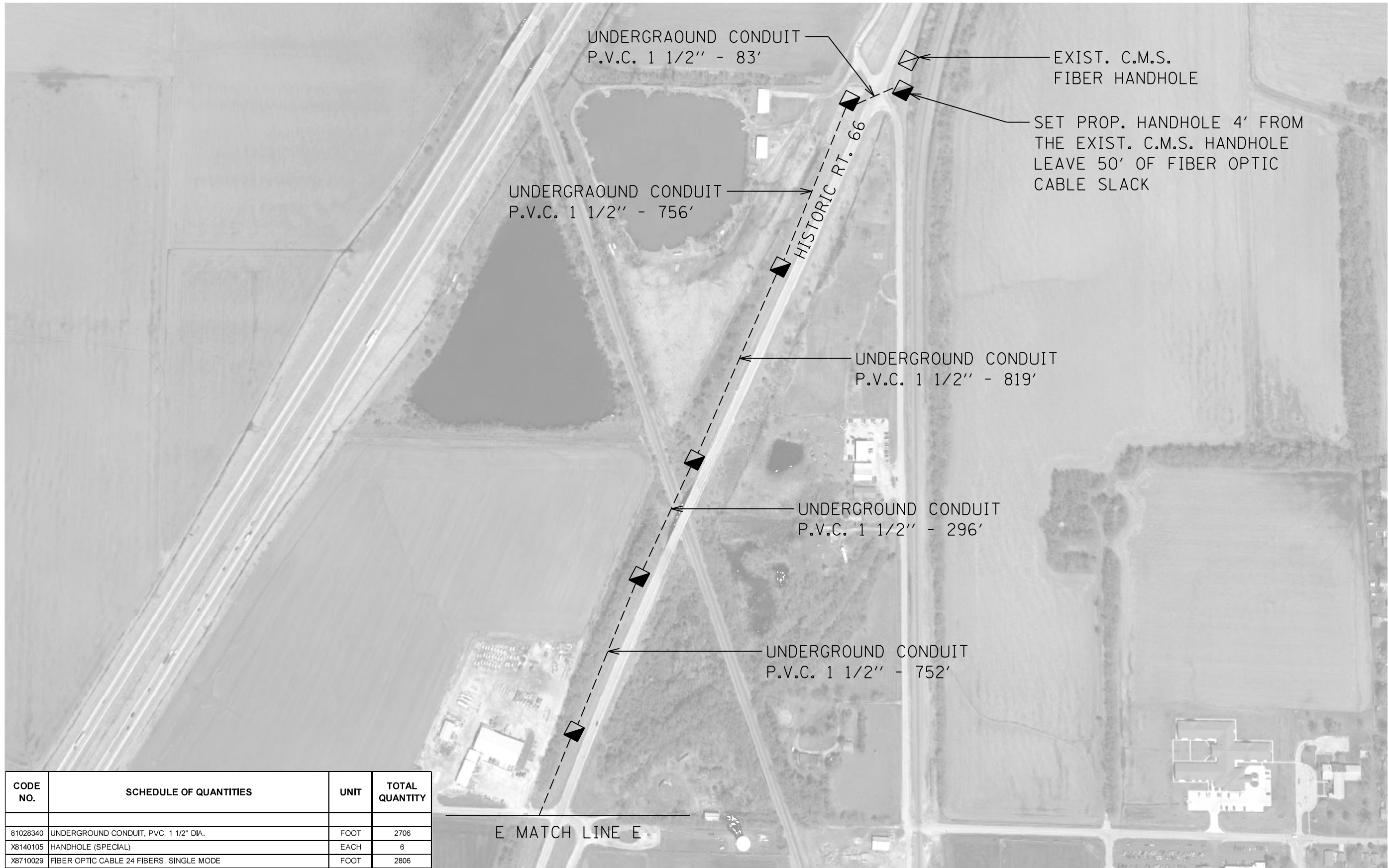
MODEL: D:\dtp\...
 FILE NAME: S:\CONTRACT\...
 CAD: 72809 - ITS Licfield - Montgomery Co\PLANS\72809-shd-6-13-fiber-410a.dgn

USER NAME = sharptd	DESIGNED - _____	REVISED - _____
PLOT SCALE = 1:0000' / in.	DRAWN - _____	REVISED - _____
PLOT DATE = 1/21/2022	CHECKED - _____	REVISED - _____
	DATE - _____	REVISED - _____

**STATE OF ILLINOIS
DEPARTMENT OF TRANSPORTATION**

PLAN	
SCALE: _____	SHEET ____ OF ____ SHEETS
STA. _____	TO STA. _____

F.A. RTE.	SECTION	COUNTY	TOTAL SHEETS	SHEET NO.
*	D6 ITS 2022-1	MONTGOMERY	20	10
CONTRACT NO. 72809				
		ILLINOIS	FED. AID PROJECT	



CODE NO.	SCHEDULE OF QUANTITIES	UNIT	TOTAL QUANTITY
81028340	UNDERGROUND CONDUIT, PVC, 1 1/2" DIA.	FOOT	2706
X8140105	HANDHOLE (SPECIAL)	EACH	6
X8710029	FIBER OPTIC CABLE 24 FIBERS, SINGLE MODE	FOOT	2806

MODEL: Default
 FILE NAME: S:\CONTRACTS\MT CAD\72809 - ITS Licfield - Montgomery Co\PLANS\72809-sh-6-13-fiber.dwg

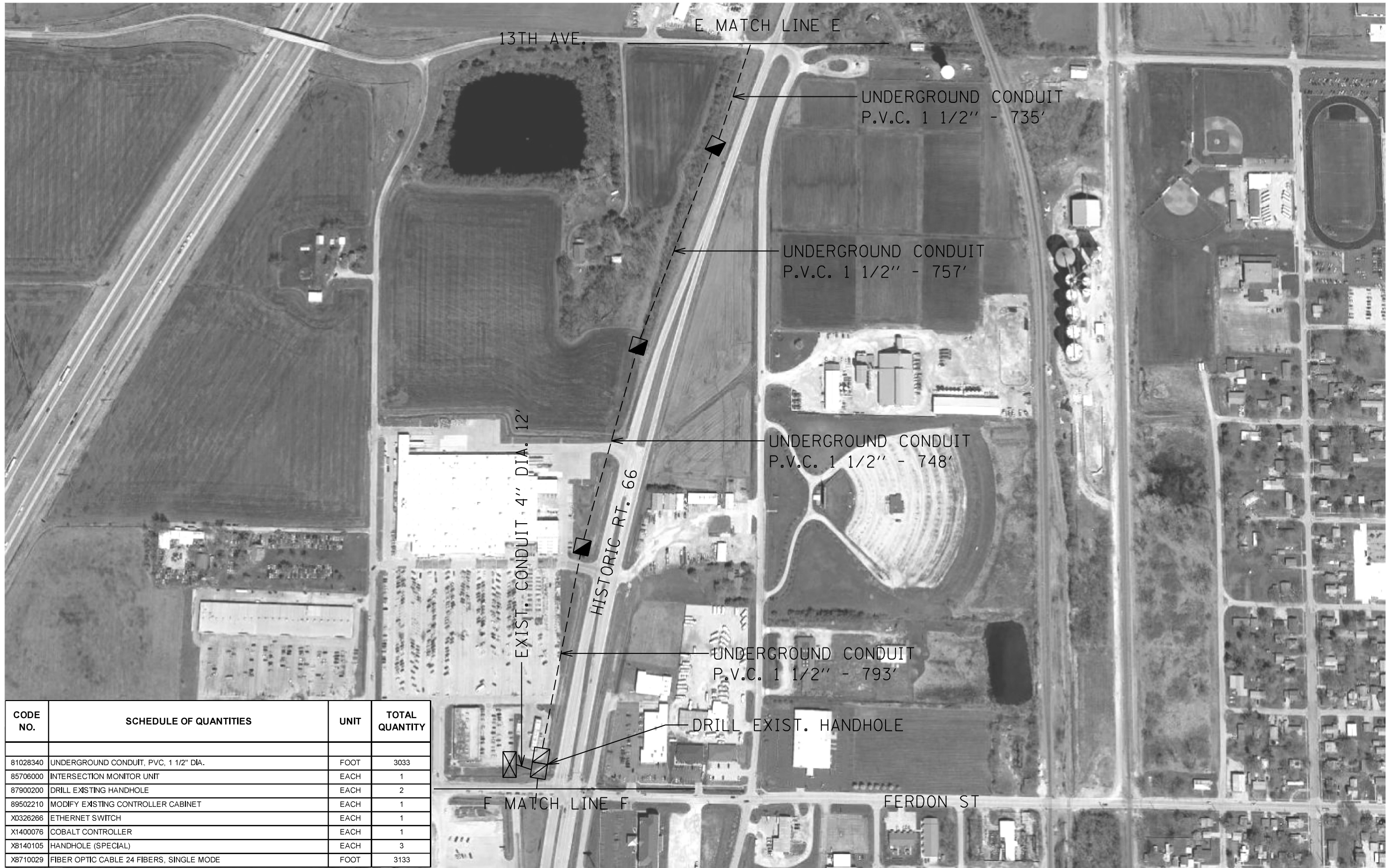
USER NAME = sharptd	DESIGNED - _____	REVISED - _____
PLOT SCALE = 1.0000' / in.	DRAWN - _____	REVISED - _____
PLOT DATE = 1/21/2022	CHECKED - _____	REVISED - _____
	DATE - _____	REVISED - _____

**STATE OF ILLINOIS
DEPARTMENT OF TRANSPORTATION**

PLAN

SCALE: _____ SHEET ____ OF ____ SHEETS STA. _____ TO STA. _____

F.A. RTE.	SECTION	COUNTY	TOTAL SHEETS	SHEET NO.
*	D6 ITS 2022-1	MONTGOMERY	20	11
CONTRACT NO. 72809				
ILLINOIS FED. AID PROJECT				



CODE NO.	SCHEDULE OF QUANTITIES	UNIT	TOTAL QUANTITY
81028340	UNDERGROUND CONDUIT, PVC, 1 1/2" DIA.	FOOT	3033
85706000	INTERSECTION MONITOR UNIT	EACH	1
87900200	DRILL EXISTING HANDHOLE	EACH	2
89502210	MODIFY EXISTING CONTROLLER CABINET	EACH	1
X0326266	ETHERNET SWITCH	EACH	1
X1400076	COBALT CONTROLLER	EACH	1
X8140105	HANDHOLE (SPECIAL)	EACH	3
X8710029	FIBER OPTIC CABLE 24 FIBERS, SINGLE MODE	FOOT	3133

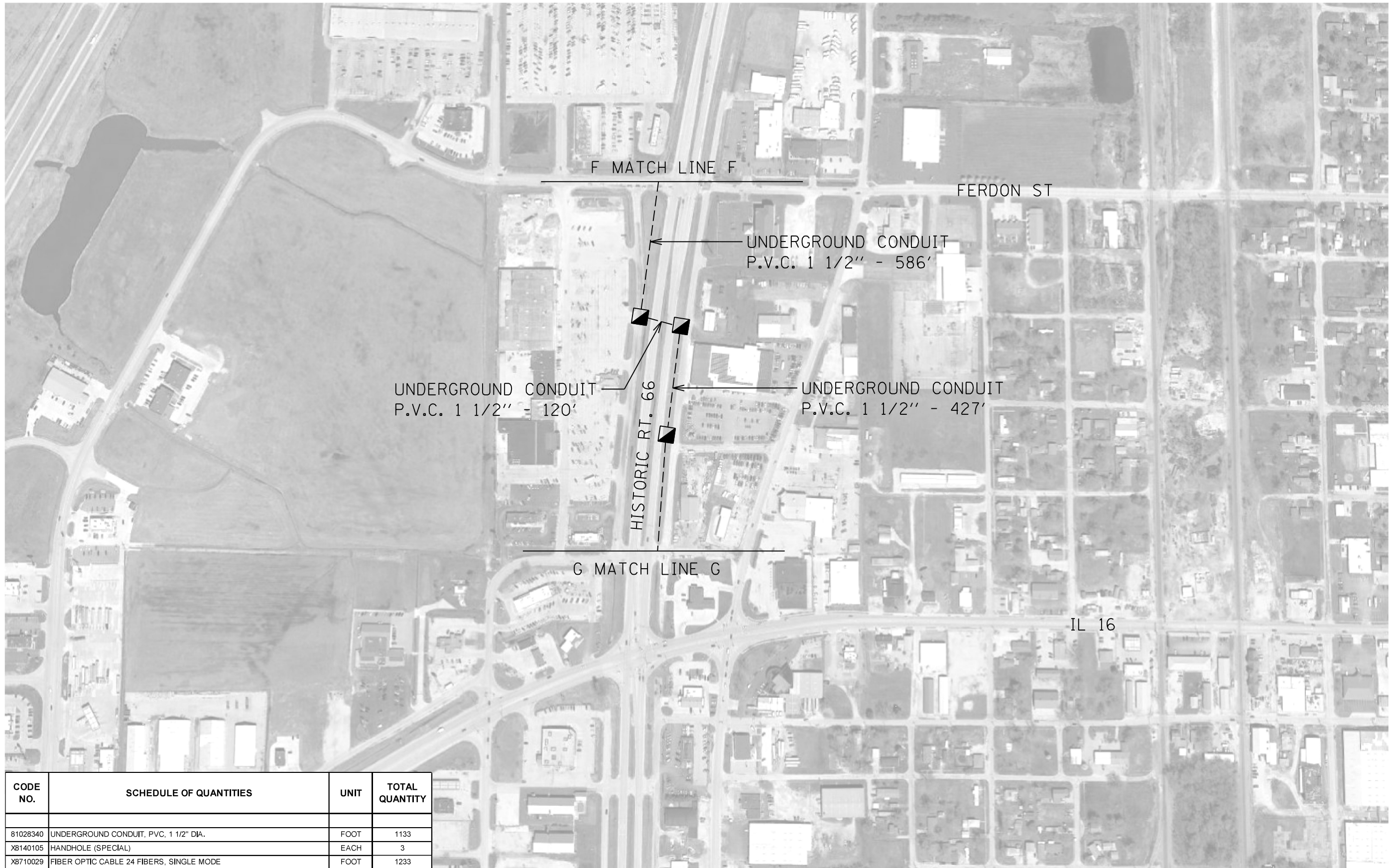
MODEL: Default
 FILE NAME: S:\CONTRACTS\MT CAD\72809 - ITS Licfield - Montgomery Co\PLANS\72809-shd-6-13-fiber-a1-bw.dgn

USER NAME = sharptd	DESIGNED - _____	REVISED - _____
PLOT SCALE = 1.0000' / in.	DRAWN - _____	REVISED - _____
PLOT DATE = 1/21/2022	CHECKED - _____	REVISED - _____
	DATE - _____	REVISED - _____

STATE OF ILLINOIS
DEPARTMENT OF TRANSPORTATION

PLAN	
SCALE: _____	SHEET ____ OF ____ SHEETS
STA. _____	TO STA. _____

F.A. RTE.	SECTION	COUNTY	TOTAL SHEETS	SHEET NO.
*	D6 ITS 2022-1	MONTGOMERY	20	12
CONTRACT NO. 72809				
ILLINOIS FED. AID PROJECT				



CODE NO.	SCHEDULE OF QUANTITIES	UNIT	TOTAL QUANTITY
81028340	UNDERGROUND CONDUIT, PVC, 1 1/2" DIA.	FOOT	1133
X8140105	HANDHOLE (SPECIAL)	EACH	3
X8710029	FIBER OPTIC CABLE 24 FIBERS, SINGLE MODE	FOOT	1233

MODEL: D:\p\h\l...
 FILE NAME: S:\CONTRACTS\MT CAD\72809 - ITS Lic\field - Montgomery Co\PLANS\72809-sh-6-13-fiber.dwg

USER NAME = sharptd	DESIGNED - _____	REVISED - _____
PLOT SCALE = 1.0000' / in.	DRAWN - _____	REVISD - _____
PLOT DATE = 1/21/2022	CHECKED - _____	REVISD - _____
	DATE - _____	REVISD - _____

**STATE OF ILLINOIS
DEPARTMENT OF TRANSPORTATION**

PLAN	
SCALE: _____	SHEET ____ OF ____ SHEETS STA. _____ TO STA. _____

F.A. RTE.	SECTION	COUNTY	TOTAL SHEETS	SHEET NO.
*	D6 ITS 2022-1	MONTGOMERY	20	13
CONTRACT NO. 72809				
ILLINOIS FED. AID PROJECT				

DIN RAIL

HARDWARE TO
ATTACH CABINET
TO THE EXIST.
SIGN TRUSS

SCREENED VENTILATION
SLOT FOR AIR MOVEMENT

POWER PANEL

INSIDE VIEW

SIDE VIEW

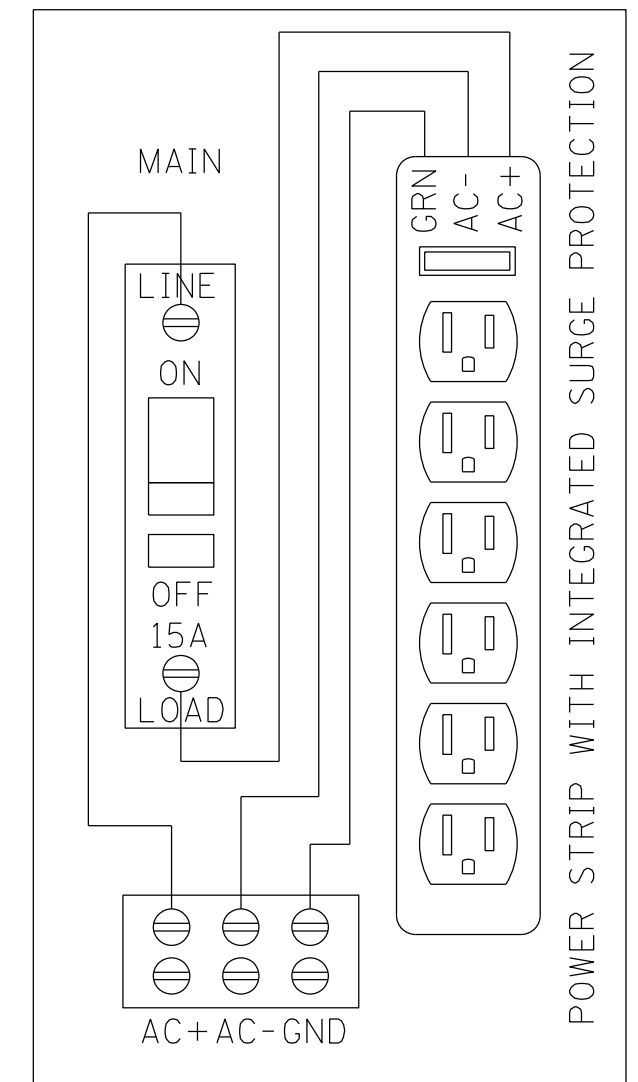
12 FIBER
INTERCONNECT
CENTER
(INCLUDED IN
THE COST OF
FIBER)

CONTINUOUS
STAINLESS STEEL
HINGE

CELLULAR NEOPRENE
GASKET

#2 CORBIN
LOCK

FRONT VIEW



ITS EQUIPMENT CABINET
POWER PANEL DETAIL
(TERMINAL STRIP TO BE
EQUIPPED WITH PLEXI-GLASS
SAFETY SHIELD)

NOTES:
THE CABINET SHALL BE NEMA TYPE 3R
CABINET WITH MAXIMUM OUTSIDE
DIMENSIONS OF 18"(H)x14"(W)x10"(D) NOMINAL.
THE CABINET SHALL BE CONSTRUCTED FROM
0.125" THICK ALUMINUM AND HAVE A NATURAL
FINISH.

THE CONTRACTOR SHALL FURNISH AND INSTALL
ALL BRACKETING AND HARDWARE REQUIRED TO
MOUNT THE CABINET TO THE LIGHT POLE.

CLOSED CIRCUIT TELEVISION CABINET

STATE OF ILLINOIS
DEPARTMENT OF TRANSPORTATION

DETAILS

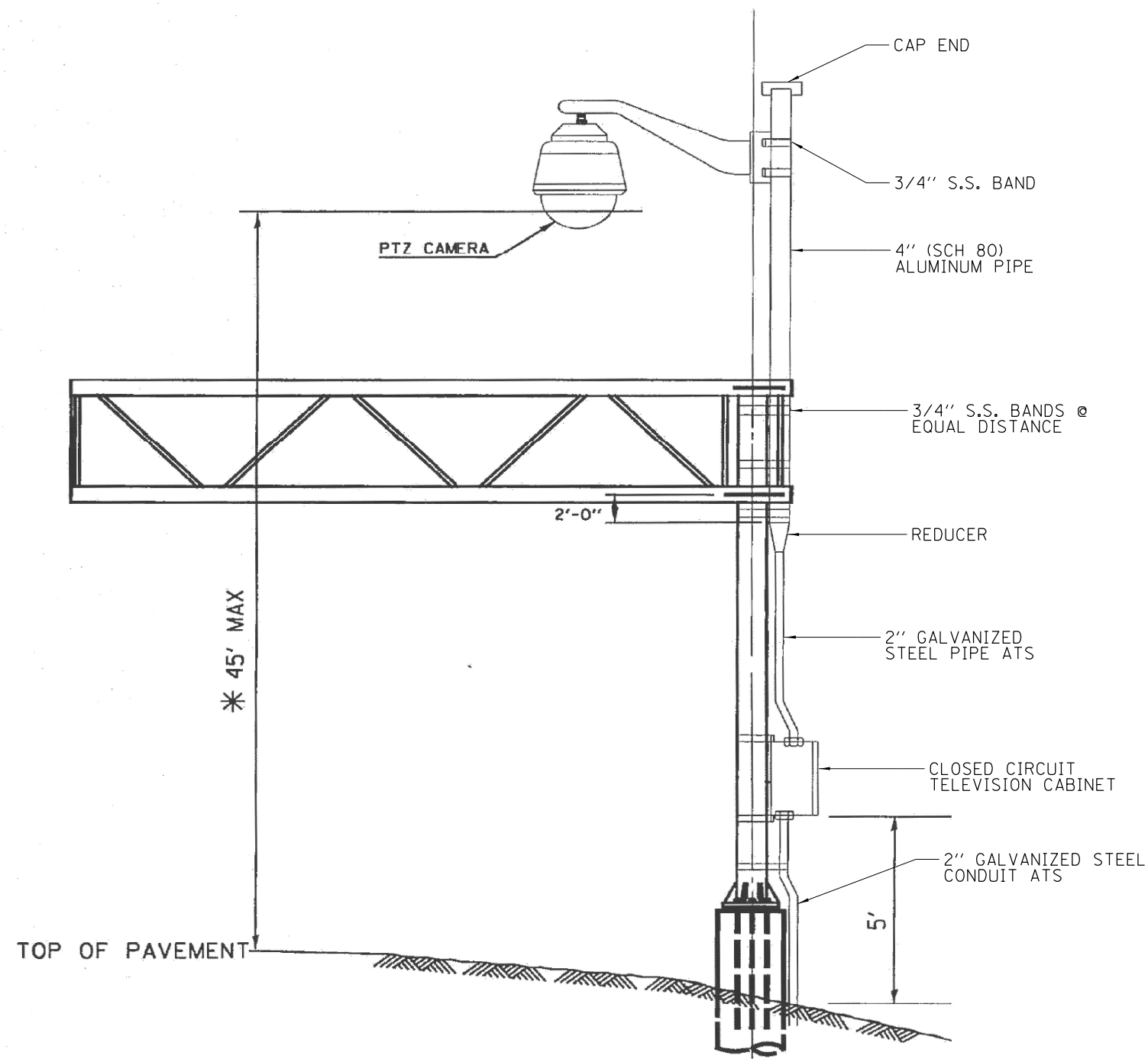
•FAP 325, FAS 1768, FAU 8239 (IL 16, US 66)

USER NAME = sharptd	DESIGNED - _____	REVISED - _____
PLOT SCALE = 1000.0000' / in.	DRAWN - _____	REVISED - _____
PLOT DATE = 1/21/2022	CHECKED - _____	REVISED - _____
	DATE - _____	REVISED - _____

SCALE: _____ SHEET ___ OF ___ SHEETS STA. _____ TO STA. _____

F.A. RTÉ.	SECTION	COUNTY	TOTAL SHEETS	SHEET NO.
*	D6 ITS 2022-1	MONTGOMERY	20	49
			CONTRACT NO. 72809	

ILLINOIS FED. AID PROJECT



NOTES:

1. THE CONTRACTOR SHALL SUBMIT DETAIL PLANS AND CALCULATIONS OF CCTV ARM AND MOUNTING HARDWARE FOR THE POLE FOR APPROVAL BY THE ENGINEER.
2. MOUNTING BRACKET DETAILS MAY VARY DEPENDING UPON EQUIPMENT MANUFACTURER.
3. INSTALL GROUNDING SYSTEM IN ACCORDANCE WITH SECTION 807 OF THE IDOT STANDARD SPECIFICATIONS.
4. CONTRACTOR SHALL CONTACT ENGINEER DURING CAMERA INSTALLATION TO DETERMINE ACTUAL CAMERA HEIGHT IN FIELD

CLOSED CIRCUIT TELEVISION
CABINET MOUNTING DETAIL

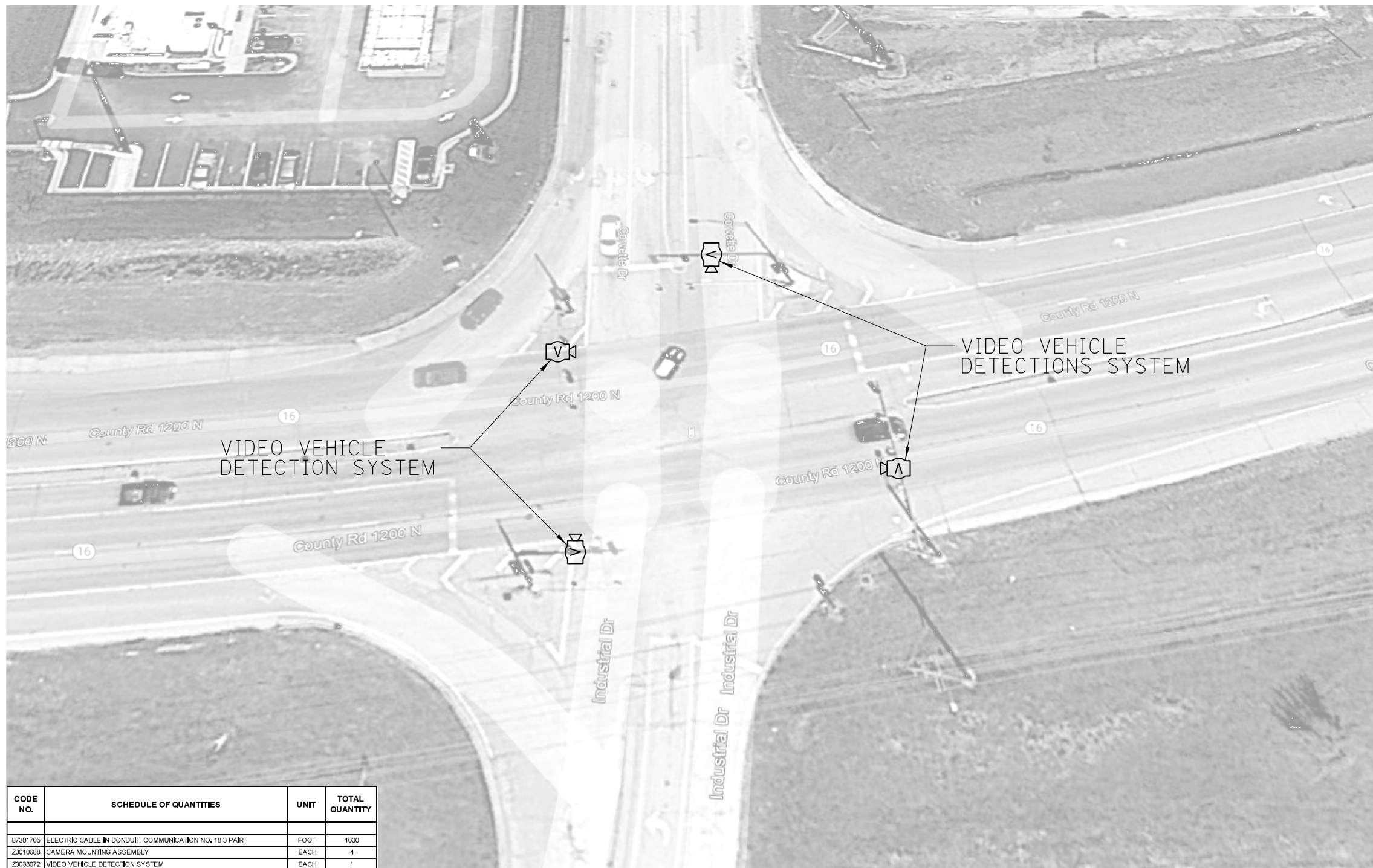
MODEL: D:\p1\h\...
 FILE NAME: S:\CONTRACT\...
 MONTGOMERY COUNTY, ILLINOIS

USER NAME = sharptd	DESIGNED - _____	REVISED - _____
PLOT SCALE = 1000.0000' / in.	DRAWN - _____	REVISED - _____
PLOT DATE = 1/21/2022	CHECKED - _____	REVISED - _____
	DATE - _____	REVISED - _____

**STATE OF ILLINOIS
DEPARTMENT OF TRANSPORTATION**

DETAILS	
SCALE: _____	SHEET ____ OF ____ SHEETS STA. _____ TO STA. _____

*FAP 325, FAS 1768, FAU 8239 (IL 16, US 66)				
F.A. RTE.	SECTION	COUNTY	TOTAL SHEETS	SHEET NO.
*	D6 ITS 2022-1	MONTGOMERY	20	15
CONTRACT NO. 72809				
ILLINOIS FED. AID PROJECT				



CODE NO.	SCHEDULE OF QUANTITIES	UNIT	TOTAL QUANTITY
87301705	ELECTRIC CABLE IN DONDUIT, COMMUNICATION NO. 18 3 PAIR	FOOT	1000
Z0010688	CAMERA MOUNTING ASSEMBLY	EACH	4
Z0033072	VIDEO VEHICLE DETECTION SYSTEM	EACH	1

CORVETTE DR. AND IL 16

REV. - MS

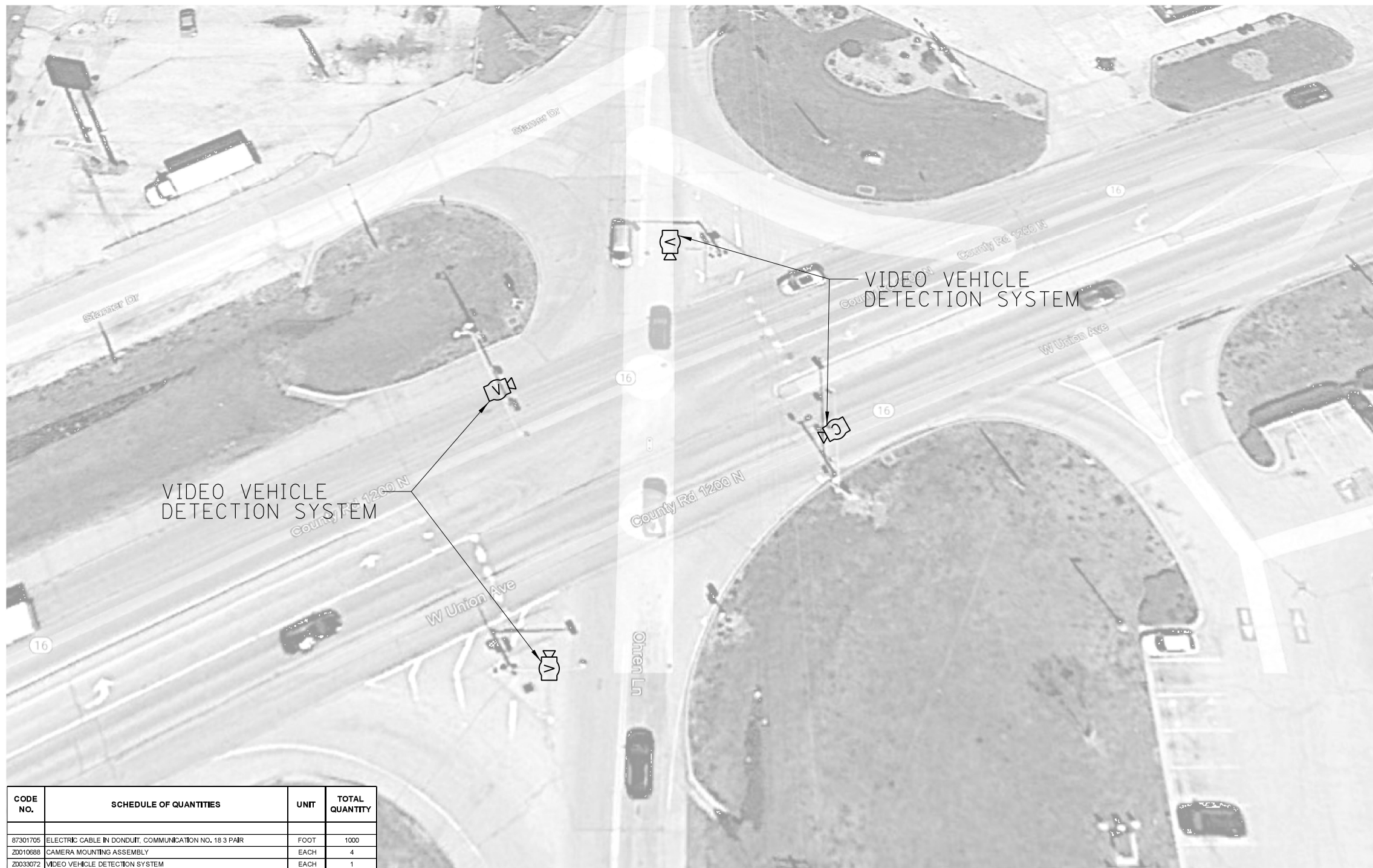
MODEL: D:\p1\it...
 FILE NAME: S:\CONTRACT\MONT_ CAD\72809 - ITS Licifield - Montgomery Co\PLANS\72809-shd-16-20-commerc.dgn

USER NAME = sharptd	DESIGNED - _____	REVISED - _____
PLOT SCALE = 1000.0000' / in.	DRAWN - _____	REVISIED - _____
PLOT DATE = 1/27/2022	CHECKED - _____	REVISIED - _____
	DATE - _____	REVISIED - _____

**STATE OF ILLINOIS
DEPARTMENT OF TRANSPORTATION**

DETAILS	
SCALE: _____	SHEET ____ OF ____ SHEETS STA. _____ TO STA. _____

*FAP 325, FAS 1768, FAU 8239 (IL 16, US 66)				
F.A. RTE.	SECTION	COUNTY	TOTAL SHEETS	SHEET NO.
*	D6 ITS 2022-1	MONTGOMERY	20	16
				CONTRACT NO. 72809
				ILLINOIS FED. AID PROJECT



CODE NO.	SCHEDULE OF QUANTITIES	UNIT	TOTAL QUANTITY
87301705	ELECTRIC CABLE IN DONDUIT, COMMUNICATION NO. 18 3 PAIR	FOOT	1000
Z0010688	CAMERA MOUNTING ASSEMBLY	EACH	4
Z0033072	VIDEO VEHICLE DETECTION SYSTEM	EACH	1

OHREN AND IL 16

REV. - MS

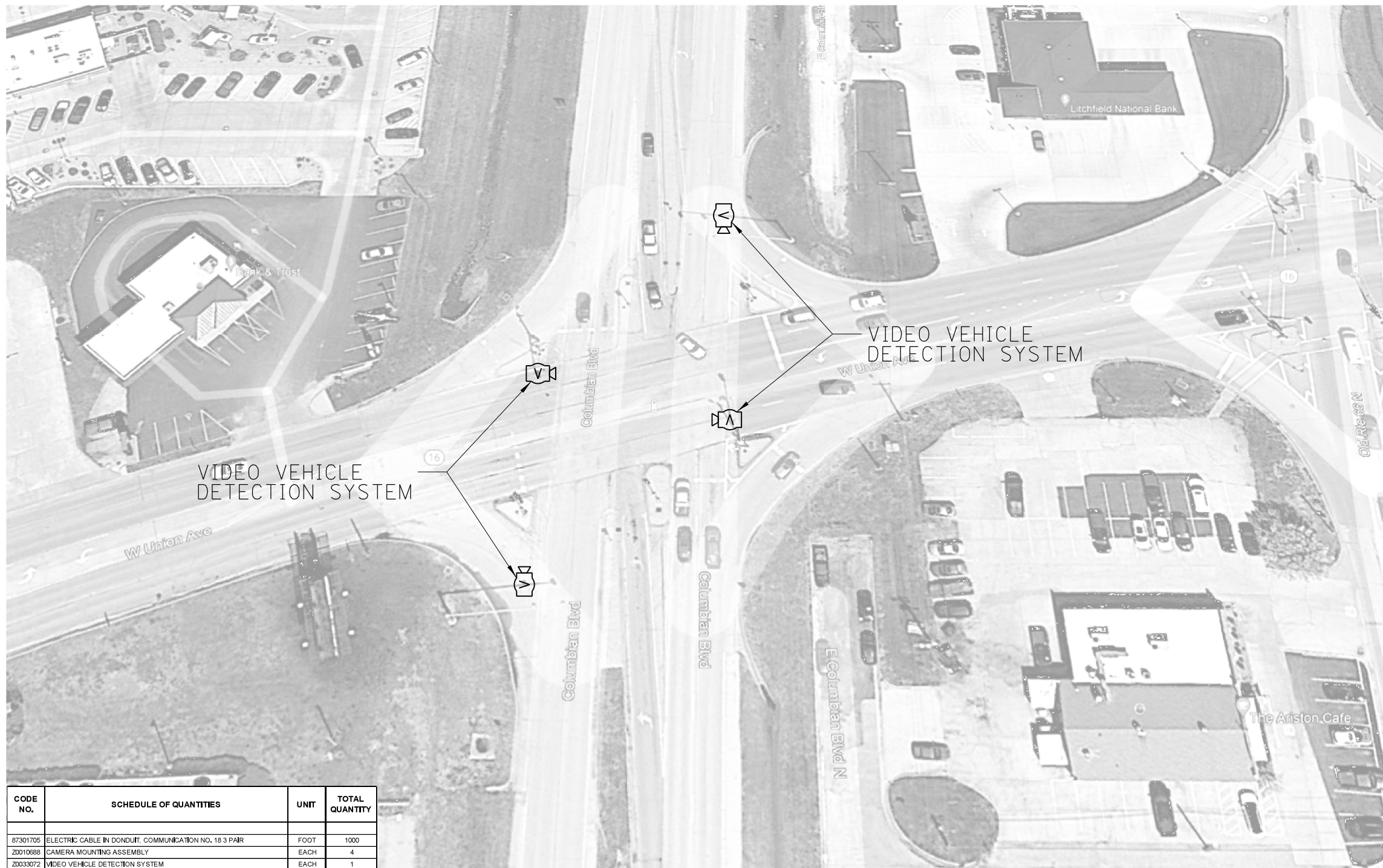
MODEL: D:\p1\h\...
 FILE NAME: S:\CONTRACT\MONT_ CAD\72809 - ITS Licifield - Montgomery Co\PLANS\72809-sh1-16-20-commerc.dgn

USER NAME = sharptd	DESIGNED - _____	REVISED - _____
PLOT SCALE = 1000.0000' / in.	CHECKED - _____	REVISED - _____
PLOT DATE = 1/27/2022	DATE - _____	REVISED - _____

**STATE OF ILLINOIS
DEPARTMENT OF TRANSPORTATION**

DETAILS	
SCALE: _____	SHEET ____ OF ____ SHEETS STA. _____ TO STA. _____

*FAP 325, FAS 1768, FAU 8239 (IL 16, US 66)				
F.A. RTE.	SECTION	COUNTY	TOTAL SHEETS	SHEET NO.
*	D6 ITS 2022-1	MONTGOMERY	20	17
			CONTRACT NO. 72809	
		ILLINOIS FED. AID PROJECT		



CODE NO.	SCHEDULE OF QUANTITIES	UNIT	TOTAL QUANTITY
87301705	ELECTRIC CABLE IN DONDUIT, COMMUNICATION NO. 18 3 PAIR	FOOT	1000
20010688	CAMERA MOUNTING ASSEMBLY	EACH	4
20033072	VIDEO VEHICLE DETECTION SYSTEM	EACH	1

OLD 66 AND IL 16

REV. - MS

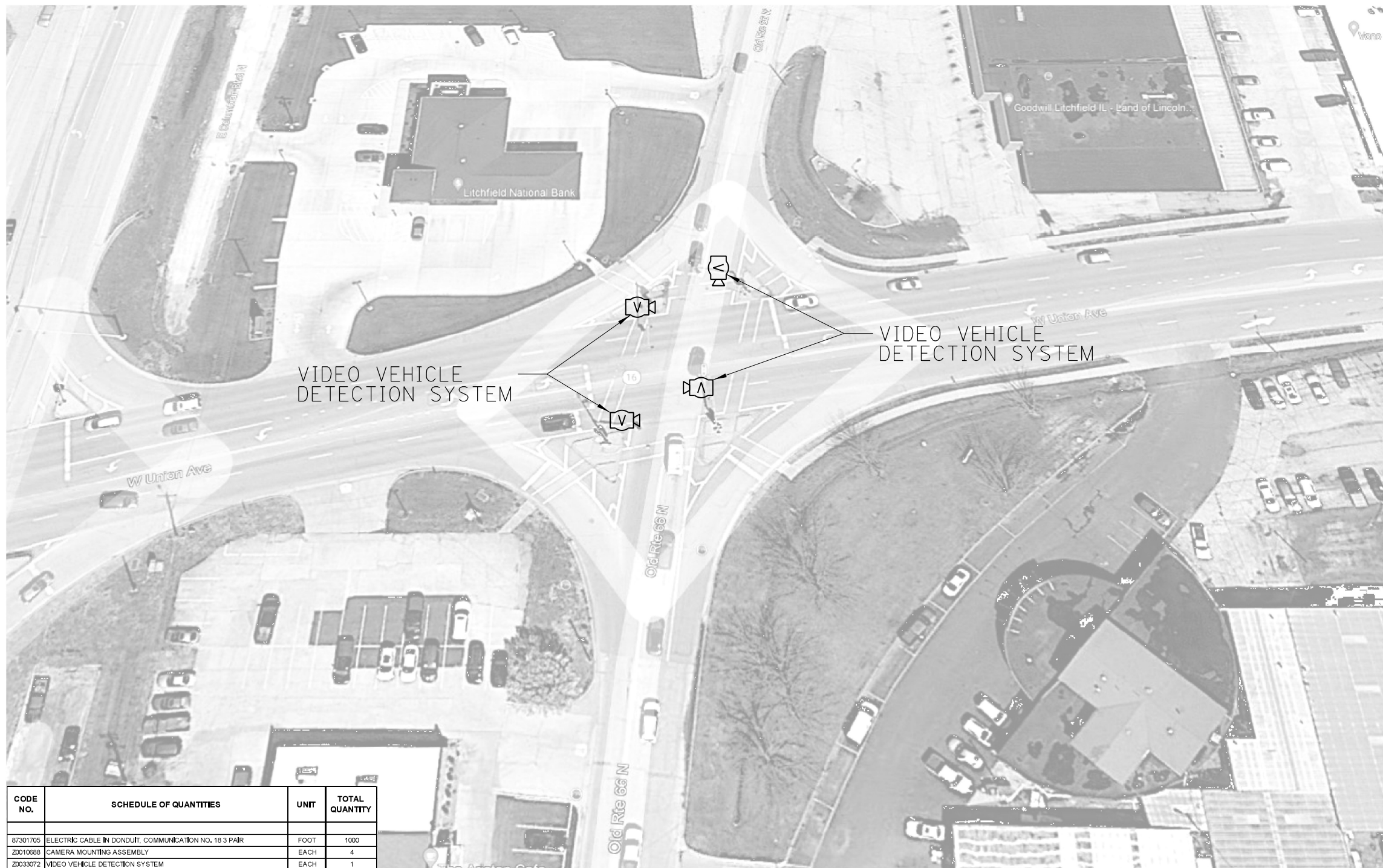
MODEL: D:\p1\h...
 FILE NAME: S:\CONTRACTS\CAD\72809 - ITS Litchfield - Montgomery Co\PLANS\72809-shd-16-20-commerc.dgn

USER NAME = sharptd	DESIGNED - _____	REVISED - _____
PLOT SCALE = 1000.0000' / in.	CHECKED - _____	REVISED - _____
PLOT DATE = 1/27/2022	DATE - _____	REVISED - _____

**STATE OF ILLINOIS
DEPARTMENT OF TRANSPORTATION**

DETAILS	
SCALE: _____	SHEET ____ OF ____ SHEETS STA. _____ TO STA. _____

*FAP 325, FAS 1768, FAU 8239 (IL 16, US 66)				
F.A. RTE.	SECTION	COUNTY	TOTAL SHEETS	SHEET NO.
*	D6 ITS 2022-1	MONTGOMERY	20	18
			CONTRACT NO. 72809	
		ILLINOIS FED. AID PROJECT		



VIDEO VEHICLE
DETECTION SYSTEM

VIDEO VEHICLE
DETECTION SYSTEM

CODE NO.	SCHEDULE OF QUANTITIES	UNIT	TOTAL QUANTITY
87301705	ELECTRIC CABLE IN DONDUIT, COMMUNICATION NO. 18 3 PAIR	FOOT	1000
Z0010688	CAMERA MOUNTING ASSEMBLY	EACH	4
Z0033072	VIDEO VEHICLE DETECTION SYSTEM	EACH	1

OLD OLD 66 AND IL 16

REV. - MS

MODEL: D:\p1\h...
FILE NAME: S:\CONTRACT\MONT_CAD\72809 - ITS Litchfield - Montgomery Co\PLANS\72809-sh-16-20-commerc.dgn

USER NAME = sharptd	DESIGNED - _____	REVISED - _____
PLOT SCALE = 1000.0000' / in.	CHECKED - _____	REVISED - _____
PLOT DATE = 1/27/2022	DATE - _____	REVISED - _____

**STATE OF ILLINOIS
DEPARTMENT OF TRANSPORTATION**

DETAILS	
SCALE: _____	SHEET ____ OF ____ SHEETS
STA. _____	TO STA. _____

*FAP 325, FAS 1768, FAU 8239 (IL 16, US 66)				
F.A. RTÉ.	SECTION	COUNTY	TOTAL SHEETS	SHEET NO.
*	D6 ITS 2022-1	MONTGOMERY	20	19
CONTRACT NO. 72809				
ILLINOIS FED. AID PROJECT				



CODE NO.	SCHEDULE OF QUANTITIES	UNIT	TOTAL QUANTITY
87301705	ELECTRIC CABLE IN DONDUIT, COMMUNICATION NO. 18 3 PAIR	FOOT	1000
Z0010688	CAMERA MOUNTING ASSEMBLY	EACH	4
Z0033072	VIDEO VEHICLE DETECTION SYSTEM	EACH	1

OLD OLD 66 FERDON DR

REV. - MS

MODEL: D:\p1\h\... FILE NAME: S:\CONTRACT\MONT_ CAD\72809 - ITS Litchfield - Montgomery Co\PLANS\72809-sh-16-20-combined.dgn

USER NAME = sharptd	DESIGNED - _____	REVISED - _____
PLOT SCALE = 1000.0000' / in.	CHECKED - _____	REVISED - _____
PLOT DATE = 1/27/2022	DATE - _____	REVISED - _____

**STATE OF ILLINOIS
DEPARTMENT OF TRANSPORTATION**

DETAILS	
SCALE: _____	SHEET ____ OF ____ SHEETS STA. _____ TO STA. _____

*FAP 325, FAS 1768, FAU 8239 (IL 16, US 66)				
F.A. RTE.	SECTION	COUNTY	TOTAL SHEETS	SHEET NO.
*	D6 ITS 2022-1	MONTGOMERY	20	20
			CONTRACT NO. 72809	
ILLINOIS FED. AID PROJECT				