

STATE OF ILLINOIS
DEPARTMENT OF TRANSPORTATION

F.A.P. RTE.	SECTION	COUNTY	TOTAL SHEETS	SHEET NO.
781	109RS-3	LAWRENCE	22*	1
		ILLINOIS	CONTRACT NO. 74B13	

* 22 - 1 = 21 TOTAL SHEETS

D-97-028-22



FOR INDEX OF SHEETS, SEE SHEET NO. 2

2021 ADT = 550

STATION EQUATION:

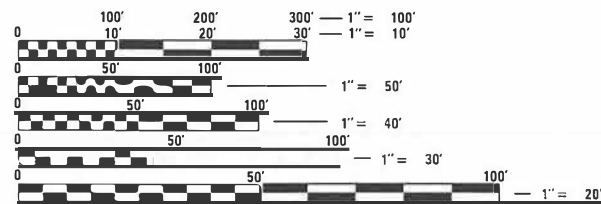
- STA 640+04.4 BK = STA 640+09.1 AH
- STA 692+49.1 BK = STA 693+08 AH
- STA 780+92.8 BK = STA 781+30.5 AH
- STA 828+30 BK = STA 829+01.8 AH
- STA 1136+27.2 BK = STA 1136+27.8 AH
- STA 1170+08.7 BK = STA 1170+08.9 AH
- STA 1183+97.8 BK = STA 1183+94.8 AH
- STA 1201+57.5 BK = STA 1201+72.4 AH
- STA 1228+08.7 BK = STA 1228+40.6 AH

PROPOSED
HIGHWAY PLANS

F.A.P. ROUTE 781 (ILL 33)
SECTION 109RS-3
PROJECT STP-NP71(917)
RESURFACING
LAWRENCE COUNTY

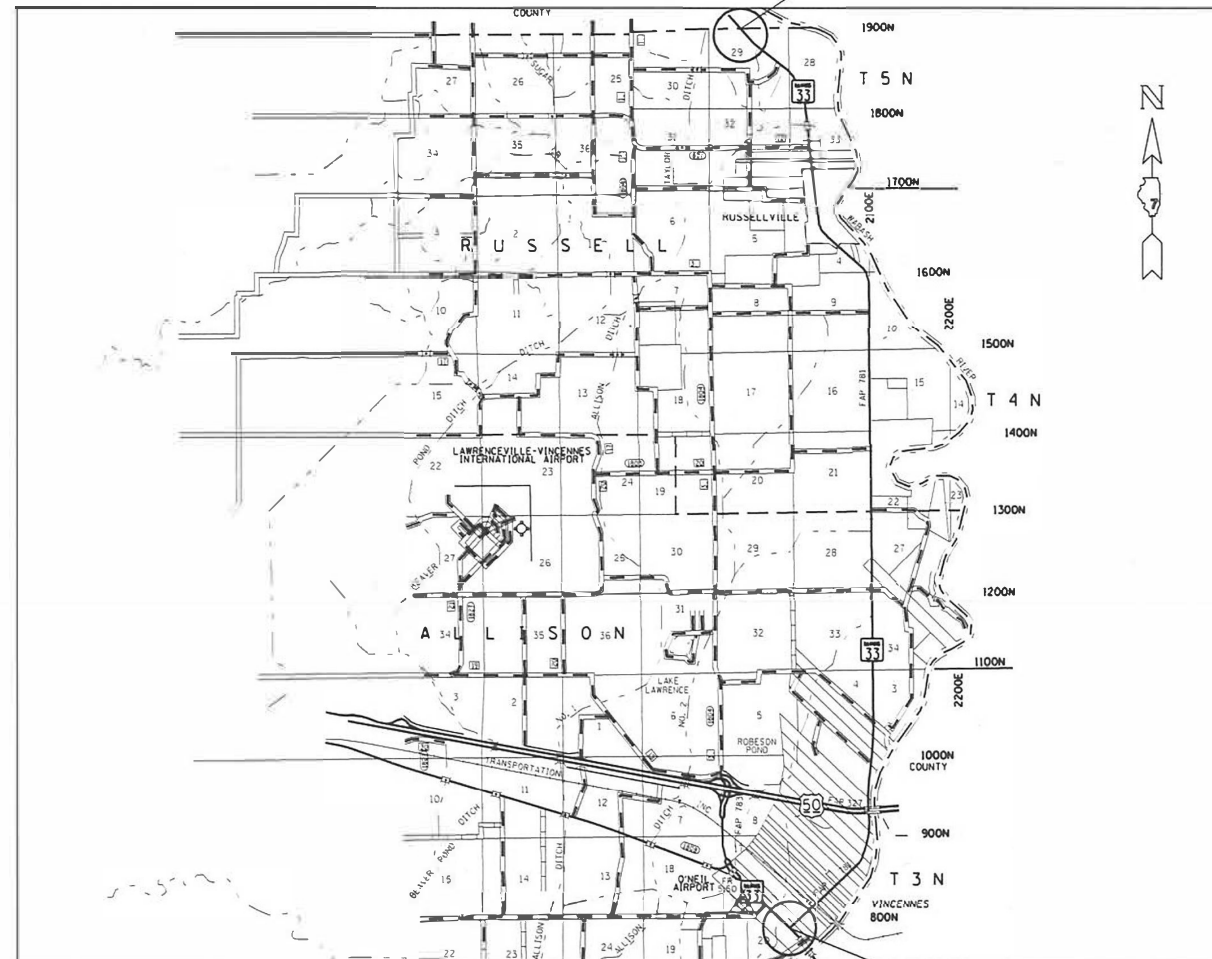
C-97-049-22

F.A.P. ROUTE 781 (IL. RTE. 33)
SECTION 109RS-3
LAWRENCE COUNTY
BEGINS STATION 623+22



FULL SIZE PLANS HAVE BEEN PREPARED USING STANDARD ENGINEERING SCALES. REDUCED SIZED PLANS WILL NOT CONFORM TO STANDARD SCALES. IN MAKING MEASUREMENTS ON REDUCED PLANS, THE ABOVE SCALES MAY BE USED.

J.U.L.I.E.
JOINT UTILITY LOCATION INFORMATION FOR EXCAVATORS
1-800-892-0123
OR 811



GROSS LENGTH = 66052.8 FT. = 12.51 MILE
NET LENGTH = 66052.8 FT. = 12.51 MILE

F.A.P. ROUTE 781 (IL. RTE. 33)
SECTION 109RS-3
LAWRENCE COUNTY
END STATION 1285+79

PROJECT ENGINEER MARK DAUGHERTY
PROJECT MANAGER BRANDON HEMMEN

CONTRACT NO. 74B13

STATE OF ILLINOIS
DEPARTMENT OF TRANSPORTATION

SUBMITTED FEBRUARY 7 20 22
Jeffrey P. Myer
REGIONAL ENGINEER

March 25 20 22
[Signature]
ENGINEER OF DESIGN AND ENVIRONMENT

March 30 20 22
Stephen M. Faria
DIRECTOR OF HIGHWAYS PROJECT IMPLEMENTATION

PRINTED BY THE AUTHORITY
OF THE STATE OF ILLINOIS

INDEX OF SHEETS

- 1 COVER SHEET
- 2 INDEX OF SHEETS AND GENERAL NOTES
- 3 SUMMARY OF QUANTITIES
- 4-5 TYPICAL SECTIONS
- 6-8 SCHEDULE OF QUANTITIES
- 9-20 PLAN SHEETS
- 21 ENTRANCE DETAILS
- 22 THIS SHEET HAS BEEN DELETED

THE FOLLOWING STANDARDS ARE A PART OF THESE PLANS AND ARE INCLUDED AFTER SHEET NO. 23:

STD. NO.	DESCRIPTION
000001-08	STANDARD SYMBOLS, ABBREVIATIONS AND PATTERNS
406201-01	MAILBOX TURNOUT
442201-03	CLASS C AND D PATCHES
701001-02	OFF-RD OPERATIONS, 2L, 2W, MORE THAN 15' FROM PAVEMENT EDGE
701006-05	OFF-RD OPERATIONS, 2L, 2W, 15' TO 24" FROM PAVEMENT EDGE
701011-04	OFF-RD MOVING OPERATIONS, 2L, 2W, DAY ONLY
701201-05	LANE CLOSURE 2L, 2W, DAY ONLY
701306-04	LANE CLOSURE 2L, 2W, SLOW MOVING OPERATIONS DAY ONLY, FOR SPEEDS = 45 MPH
701311-03	LANE CLOSURE 2L, 2W, MOVING OPERATIONS-DAY ONLY
701901-08	TRAFFIC CONTROL DEVICES
780001-05	TYPICAL PAVEMENT MARKINGS
781001-04	TYPICAL APPLICATION OF RAISED REFLECTIVE PAVEMENT MARKERS
001006	DECIMAL OF AN INCH AND OF A FOOT

GENERAL NOTES

THE RESIDENT ENGINEER SHALL BE THE SOLE JUDGE CONCERNING THE CURING TIME FOR THE VARIOUS HOT-MIX ASPHALT LIFTS.

THE MATERIAL USED FOR AGGREGATE WEDGE SHOULDERS, TYPE B AND AGGREGATE SURFACE COURSE, TYPE B SHALL BE CRUSHED STONE OR CRUSHED CONCRETE.

PAVEMENT MARKING SHALL BE APPLIED IN ACCORDANCE WITH SECTION 780 OF THE STANDARD SPECIFICATIONS. SHORT TERM PAVEMENT MARKING SHALL BE APPLIED AS SPECIFIED IN SECTION 703 OF THE STANDARD SPECIFICATIONS, TEMPORARY TAPE SHALL BE USED ON THE SURFACE COURSE, AND PAINT SHALL BE USED ON MILLED SURFACES, AND BITUMINOUS MATERIALS TACK COAT.

THE FOLLOWING RATES OF APPLICATION HAVE BEEN USED IN CALCULATING PLAN QUANTITIES:

MIXTURE USE(S)	PG	DESIGN AIR VOIDS	MIXTURE COMPOSITION	FRICTION AGGREGATE	MIXTURE WEIGHT	QUALITY MANAGEMENT PROGRAM
HMA SURFACE COURSE, IL-9.5, MIX "C", N70 (1 1/2")	PG 64-22	4.0% @ N=70	IL - 9.5	MIXTURE C	N70	PFPP
INCIDENTAL HMA SURFACING	PG 64-22	4.0% @ N=70	IL - 9.5	MIXTURE C	N70	QC/QA
CLASS "D" PAVEMENT PATCHING	PG 64-22	4.0% @ N=70	IL - 19.0	N/A	N70	QC/QA

HOT MIX ASPHALT	112 LBS/SQ YD/IN
BITUMINOUS MATERIALS (TACK COAT)	0.05 LBS/SQ FT
GRANULAR MATERIAL	2.05 TONS/CU YD

REV. - MS

FILE NAME =	USER NAME = steffemk	DESIGNED -	REVISED -	STATE OF ILLINOIS DEPARTMENT OF TRANSPORTATION	INDEX OF SHEETS AND GENERAL NOTES			F.A.P. RTE.	SECTION	COUNTY	TOTAL SHEETS	SHEET NO.
pw\11dot-pw.bentley.com\PWIDOT\Documents\MDOT Offices\District 7\Projects\74813\CAD\Drawings\74813-aht-gennote.dgn	DRAWN	REVISION	REVISION					781	109R5-3	LAWRENCE	22	2
PLOT SCALE = 100.0000' / 1in.	CHECKED -	REVISION	REVISION		CONTRACT NO. 74B13							
PLOT DATE = 2/8/2022	DATE -	REVISION	REVISION		ILLINOIS FED. AID PROJECT							
				SCALE: NA		SHEET 1 OF 1 SHEETS		STA. TO STA.				

80% FED
20% STATE

80% FED
20% STATE

SUMMARY OF QUANTITIES			TOTAL QUANTITIES	CONSTRUCTION TYPE CODE		
CODE NO	ITEM	UNIT		0005 RURAL		
40200800	AGGREGATE SURFACE COURSE, TYPE B	TON	247	247		
40600290	BITUMINOUS MATERIALS (TACK COAT)	POUND	72644	72644		
40600370	LONGITUDINAL JOINT SEALANT	FOOT	66040	66040		
40600990	TEMPORARY RAMP	SO YD	25	25		
40604052	HOT-MIX ASPHALT SURFACE COURSE, IL-9.5, MIX "C", N70	TON	13561	13561		
40800050	INCIDENTAL HOT-MIX ASPHALT SURFACING	TON	97	97		
44000155	HOT-MIX ASPHALT SURFACE REMOVAL, 1 1/2"	SO YD	161430	161430		
44201773	CLASS D PATCHES, TYPE I, 11 INCH	SO YD	1154	1154		
44201777	CLASS D PATCHES, TYPE II, 11 INCH	SO YD	236	236		
44201781	CLASS D PATCHES, TYPE III, 11 INCH	SO YD	45.5	45.5		
44201783	CLASS D PATCHES, TYPE IV, 11 INCH	SO YD	53.8	53.8		
48102100	AGGREGATE WEDGE SHOULDER, TYPE B	TON	2851	2851		

SUMMARY OF QUANTITIES			TOTAL QUANTITIES	CONSTRUCTION TYPE CODE		
CODE NO	ITEM	UNIT		0005 RURAL		
67000400	ENGINEER'S FIELD OFFICE, TYPE A	CAL MO	4	4		
67100100	MOBILIZATION	L SUM	1	1		
70100450	TRAFFIC CONTROL AND PROTECTION, STANDARD 701201	L SUM	1	1		
70100460	TRAFFIC CONTROL AND PROTECTION, STANDARD 701306	L SUM	1	1		
70107025	CHANGEABLE MESSAGE SIGN	CAL DA	28	28		
70300100	SHORT TERM PAVEMENT MARKING	FOOT	6604	6604		
70300150	SHORT TERM PAVEMENT MARKING REMOVAL	SO FT	2180	2180		
* 78001110	PAINT PAVEMENT MARKING - LINE 4"	FOOT	168272	168272		
* 78100100	RAISED REFLECTIVE PAVEMENT MARKER	EACH	826	826		
78300200	RAISED REFLECTIVE PAVEMENT MARKER REMOVAL	EACH	826	826		
X0326440	SURFACE REMOVAL, VARIABLE DEPTH (SPECIAL)	SO YD	1138	1138		

* SPECIALTY ITEM

REV. - MS

MODEL: Default
 FILE: M:\MS_E:\p\bludct-cw_bentley.com\FWIDOT\Documents\DOT Offices\District 7\Projects\74813\CADD\data\CAD\sheet\74813\sh-500.dgn

USER NAME = steffenmk	DESIGNED -	REVISED -
	DRAWN -	REVISED -
PLOT SCALE = 100.0000' / in.	CHECKED -	REVISED -
PLOT DATE = 2/8/2022	DATE -	REVISED -

STATE OF ILLINOIS
DEPARTMENT OF TRANSPORTATION

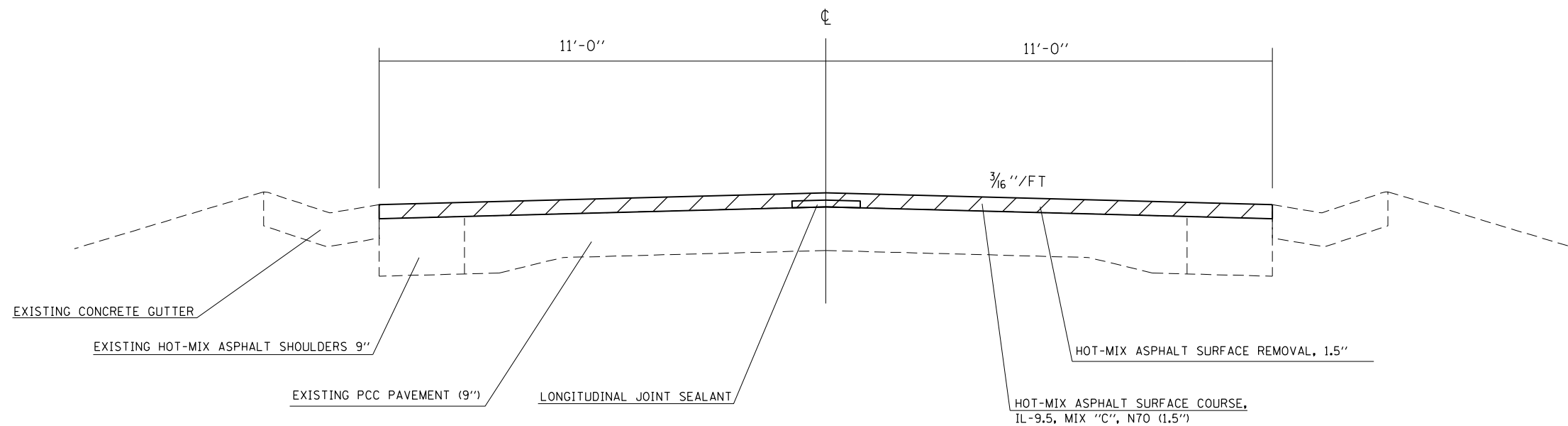
SUMMARY OF QUANTITIES

SCALE: SHEET 1 OF 2 SHEETS STA. TO STA.

F.A.P. RTE.	SECTION	COUNTY	TOTAL SHEETS	SHEET NO.
781	109RS-3	LAWRENCE	22	3
ILLINOIS FED. AID PROJECT				

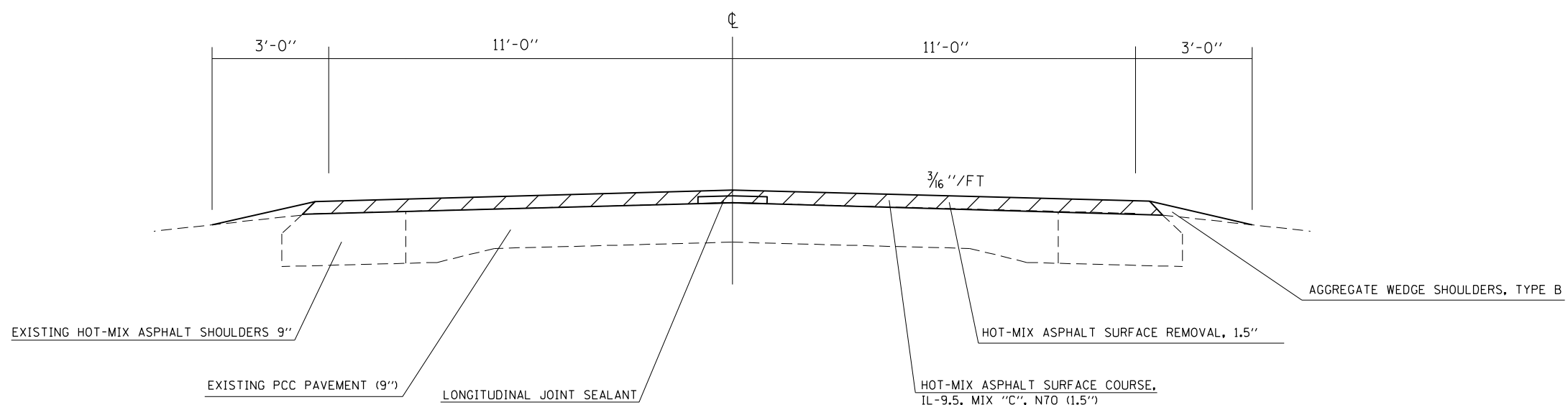
TYPICAL CROSS SECTION

STATION 623+22 TO STATION 632+94
 STATION 643+97 TO STATION 657+69
 STATION 1260+40 TO STATION 1267+42



TYPICAL CROSS SECTION

STATION 632+94 TO STATION 643+97
 STATION 657+69 TO STATION 1164+53
 STATION 1217+72 TO STATION 1260+40
 STATION 1267+42 TO STATION 1285+79



FILE NAME =	USER NAME = steffenk	DESIGNED -	REVISED -	STATE OF ILLINOIS DEPARTMENT OF TRANSPORTATION	TYPICAL CROSS SECTIONS		F.A.P. RTE.	SECTION	COUNTY	TOTAL SHEETS	SHEET NO.
p:\dot-pw.bentley.com\PWIDOT\Documents\IDOT Offices\District 7\Projects\74B13\CADD\Drawings\74B13-sht-typicals.dgn	DRAWN	REVIS	REVIS				781	109RS-3	LAWRENCE	22	4
PLOT SCALE = 40.0000' / in.	CHECKED -	REVIS	REVIS		SHEET NO. 1 OF 3 SHEETS		STA.	TO STA.	CONTRACT NO. 74B13		
PLOT DATE = 2/8/2022	DATE -	REVIS	REVIS		ILLINOIS FED. AID PROJECT						

STATION	TO	STATION	LENGTH FEET	WIDTH FEET	AREA SQ FT	AREA SQ YD	SURFACE COURSE	BITUMINOUS MATERIALS (TACK COAT)	HOT-MIX ASPHALT SURFACE COURSE, IL-9.5, MIX "C" N70 (1 1/2")	LONGITUDINAL JOINT SEALANT	HOT-MIX ASPHALT SURFACE REMOVAL, 1 1/2"	TEMPORARY RAMP
							THICKNESS	40600290	40604052	40600370	44000155	40600990
							INCH	POUND	TON	FEET	SQ YD	SQ YD
623+22.00		640+04.40	1682.4	22.0	37012.8	4112.5	1.5	1850.6	345.5	1682.4	4112.5	12.2
640+04.40			4.7	STATION EQUATION								
640+09.10		692+49.10	5240.0	22.0	115280.0	12808.9	1.5	5764.0	1075.9	5240.0	12808.9	
692+49.10		693+08.00	58.9	STATION EQUATION								
693+08.00		780+92.80	8784.8	22.0	193265.6	21474.0	1.5	9663.3	1803.8	8784.8	21474.0	
780+92.80		781+30.50	37.7	STATION EQUATION								
781+30.50		828+30.00	4699.5	22.0	103389.0	11487.7	1.5	5169.5	965.0	4699.5	11487.7	
828+30.00		829+01.80	71.8	STATION EQUATION								
829+01.80		1136+27.20	30725.4	22.0	675958.8	75106.5	1.5	33797.9	6308.9	30725.4	75106.5	
1136+27.20		1136+27.80	0.6	STATION EQUATION								
1136+27.80		1170+08.70	3380.9	22.0	74379.8	8264.4	1.5	3719.0	694.2	3380.9	8264.4	
1170+08.70		1170+08.90	0.2	STATION EQUATION								
1170+08.90		1183+97.80	1388.9	22.0	30555.8	3395.1	1.5	1527.8	285.2	1388.9	3395.1	
1183+97.80		1183+94.80	-3.0	STATION EQUATION								
1183+94.80		1201+57.50	1762.7	22.0	38779.4	4308.8	1.5	1939.0	361.9	1762.7	4308.8	
1201+57.50		1201+72.40	14.9	STATION EQUATION								
1201+72.40		1228+08.70	2636.3	22.0	57998.6	6444.3	1.5	2899.9	541.3	2636.3	6444.3	
1228+08.70		1228+40.60	31.9	STATION EQUATION								
1228+40.60		1285+79.00	5738.4	22.0	126244.8	14027.2	1.5	6312.2	1178.3	5738.4	14027.2	12.2
TOTAL=								72644	13561	66040	161430	25

STA.	TO	STA.	LENGTH FEET	WIDTH LT/RT FEET	AGGREGATE WEDGE SHOULDER, TYPE B
					48102100 TON
623+22.00		632+94.00	972.0	0	
632+94.00		640+04.40	710.0	6	34
640+04.40			STATION EQUATION		
640+09.10		643+97.00	388.0	6	18
643+97.00		657+69.00	1372.0	0	
657+69.00		692+49.10	3480.0	6	165
692+49.10		693+08.00	STATION EQUATION		
693+08.00		780+92.80	8785.0	6	417
780+92.80		781+30.50	STATION EQUATION		
781+30.50		828+30.00	4700.0	6	223
828+30.00		829+01.80	STATION EQUATION		
829+01.80		1136+27.20	30725.0	6	1458
1136+27.20		1136+27.80	STATION EQUATION		
1136+27.80		1164+53.00	2825.0	6	134
1164+53.00		1170+08.70	556.0	3	
1170+08.70		1170+08.90	STATION EQUATION		
1170+08.90		1183+97.80	1389.0	3	33
1183+97.80		1183+94.80	STATION EQUATION		
1183+94.80		1201+57.50	1763.0	3	42
1201+57.50		1201+72.40	STATION EQUATION		
1201+72.40		1217+72.00	1600.0	3	38
1217+72.00		1228+08.70	1037.0	6	49
1228+08.70		1228+40.60	STATION EQUATION		
1228+40.60		1260+40.00	3199.0	6	152
1260+40.00		1267+42.00	702.0	0	
1267+42.00		1285+79.00	1837.0	6	87
TOTALS					2851

REV. - MS

MODEL: Default
FILE NAME: P:\11152525\Bentley.com\PROJECTS\11152525\CADD\DATA\CAD\Sheet074813.sht.scheduled.dgn

USER NAME = steffennk	DESIGNED -	REVISED -
	DRAWN -	REVISED -
PLOT SCALE = 100.0000' / in.	CHECKED -	REVISED -
PLOT DATE = 2/8/2022	DATE -	REVISED -

**STATE OF ILLINOIS
DEPARTMENT OF TRANSPORTATION**

SCHEDULES

SCALE: SHEET OF SHEETS STA. TO STA.

F.A.P. RTE.	SECTION	COUNTY	TOTAL SHEETS	SHEET NO.
781	109RS-3	LAWRENCE	22	6
ILLINOIS FED. AID PROJECT			CONTRACT NO. 74813	

MODEL: Default
 FILE NAME: P:\11152626w Bentley.com P\11152626\Documents\DOT Office\District 7\Projects\74B13\CAD\data\CADsheets\0774B13.sht-schedule.dgn

STATION	TO	STATION	LENGTH	NO PASSING ZONE	PAINT PAVEMENT MARKING - LINE 4" WHITE	PAINT PAVEMENT MARKING - LINE 4" YELLOW	SHORT-TERM PAVEMENT MARKING	SHORT TERM PAVEMENT MARKING REMOVAL	RAISED REFLECTIVE PAVEMENT MARKER	RAISED REFLECTIVE PAVEMENT MARKER REMOVAL	
					78001110	78001110	70300100	70300150	78100100	78300200	
FEET		FEET	FEET		FEET	FEET	FEET	SQ FT	EACH	EACH	
623+22.00		632+66.00	944.0	SB	1888	1180	94	31.2	12	12	
632+66.00		640+04.40	738.4	DL	1477	1477	74	24.4	9	9	
640+04.40		640+09.10	STATION EQUATION								0
640+09.10		646+95.00	685.9	DL	1372	1372	69	22.6	9	9	
646+95.00		658+35.00	1140.0	NB	2280	1425	114	37.6	14	14	
658+35.00		692+49.10	3414.1		6828	854	341	112.7	43	43	
692+49.10		693+08.00	STATION EQUATION								0
693+08.00		780+92.80	8784.8		17570	2196	878	289.9	110	110	
780+92.80		781+30.50	STATION EQUATION								0
781+30.50		810+30.00	2899.5		5799	725	290	95.7	36	36	
810+30.00		819+60.00	930.0	SB	1860	1163	93	30.7	12	12	
819+60.00		824+60.00	500.0	DL	1000	1000	50	16.5	6	6	
824+60.00		828+30.00	370.0	NB	740	463	37	12.2	5	5	
828+30.00		829+01.80	STATION EQUATION								0
829+01.80		836+50.00	748.2	NB	1496	935	75	24.7	9	9	
836+50.00		953+00.00	11650.0		23300	2913	1165	384.5	146	146	
953+00.00		959+32.00	632.0	NB	1264	790	63	20.9	8	8	
959+32.00		1136+27.20	17695.2		35390	4424	1770	583.9	221	221	
1136+27.20		1136+27.80	STATION EQUATION								0
1136+27.80		1150+81.00	1453.2		2906	363	145	48.0	18	18	
1150+81.00		1156+12.00	531.0	SB	1062	664	53	17.5	7	7	
1156+12.00		1161+00.00	488.0		976	122	49	16.1	6	6	
1161+00.00		1166+70.00	570.0	NB	1140	713	57	18.8	7	7	
1166+70.00		1170+08.70	338.7		677	85	34	11.2	4	4	
1170+08.70		1170+08.90	STATION EQUATION								0
1170+08.90		1181+06.00	1097.1		2194	274	110	36.2	14	14	
1181+06.00		1183+97.80	291.8	SB	584	365	29	9.6	4	4	
1183+97.80		1183+94.80	STATION EQUATION								0
1183+94.80		1191+20.00	725.2	SB	1450	906	73	23.9	9	9	
1191+20.00		1201+57.50	1037.5	DL	2075	2075	104	34.2	13	13	
1201+57.50		1201+72.40	STATION EQUATION								0
1201+72.40		1222+75.00	2102.6	DL	4205	4205	210	69.4	26	26	
1222+75.00		1228+08.70	533.7	NB	1067	667	53	17.6	7	7	
1228+08.70		1228+40.60	STATION EQUATION								0
1228+40.60		1233+72.00	531.4	NB	1063	664	53	17.5	7	7	
1233+72.00		1251+49.00	1777.0		3554	444	178	58.6	22	22	
1251+49.00		1261+40.00	991.0	SB	1982	1239	99	32.7	12	12	
1261+40.00		1266+02.00	462.0	DL	924	924	46	15.2	6	6	
1266+02.00		1276+75.00	1073.0	NB	2146	1341	107	35.4	13	13	
1276+75.00		1285+79.00	904.0		1808	226	90	29.8	11	11	
TOTAL=					132079	36193					
TOTAL=					168272		6604	2180	826	826	

REV. - MS

USER NAME = steffenmk	DESIGNED -	REVISED -
	DRAWN -	REVISED -
PLOT SCALE = 100.0000' / in.	CHECKED -	REVISED -
PLOT DATE = 2/8/2022	DATE -	REVISED -

**STATE OF ILLINOIS
 DEPARTMENT OF TRANSPORTATION**

SCHEDULES

SCALE: SHEET OF SHEETS STA. TO STA.

F.A.P. RTE.	SECTION	COUNTY	TOTAL SHEETS	SHEET NO.
781	109RS-3	LAWRENCE	22	7
ILLINOIS FED. AID PROJECT			CONTRACT NO. 74B13	

ENTRANCE SCHEDULE										
STATION	RT / LT	TYPE	MATERIAL	WIDTH	WIDTH	DEPTH	AREA	INCIDENTAL HOT-MIX ASPHALT SURFACING	AGGREGATE SURFACE COURSE, TYPE B	SURFACE REMOVAL, VARIBLE DEPTH (SPECIAL)
				FRONT FEET	BACK FEET					
633+80	RT	PE	AGG	100	100	7	78		9	
694+43	RT	FE	AGG	24	16	10	22		3	
704+16	RT	FE	AGG	45	33	10	43		5	
720+60	RT	PRA	HMA	100	24	55	379	32		379
751+16	RT	PE	AGG	45	13	3	10		1	
752+80	RT	PE	AGG	48	30	3	13		2	
757+83	RT	PRA	HMA	63	39	11	62	5		62
761+00	RT	PE	AGG	35	12	10	26		3	
762+70	RT	PRA	HMA	34	19	10	29	2		29
763+10	RT	PE	AGG	40	20	3	10		1	
765+30	RT	PE	AGG	21	12	10	18		2	
767+35	RT	PRA	HMA	36	19	10	31	3		31
772+25	RT	PRA	HMA	39	21	10	33	3		33
781+42	RT	PE	AGG	36	18	10	30		3	
786+35	RT	PE	AGG	18	12	10	17		2	
789+12	RT	PE	AGG	41	18	10	33		4	
791+02	RT	PE	AGG	65	18	10	46		5	
792+01	RT	PE	AGG	52	26	10	43		5	
805+92	RT	PE	AGG	60	26	10	48		6	
810+10	RT	CE	AGG	40	21	10	34		4	
833+20	RT	FE	AGG	34	25	10	33		4	
863+21	RT	PE	AGG	72	47	10	66		8	
848+83	RT	PRA	AGG	75	27	10	57		7	
852+74	RT	PE	AGG	38	15	10	29		3	
889+60	RT	PE	AGG	43	18	10	34		4	
900+89	RT	PE	AGG	29	15	10	24		3	
904+10	RT	FE	AGG	28	15	10	24		3	
942+50	RT	PRA	HMA	63	30	15	78	7		78
962+59	RT	FE	AGG	36	13	10	27		3	
983+26	RT	FE	AGG	47	20	10	37		4	
996+91	RT	FE	AGG	43	26	10	38		4	
1017+54	RT	PRA	AGG	39	19	10	32		4	
1036+59	RT	PRA	HMA	82	27	25	151	13		151
1119+97	RT	PE	AGG	34	16	10	28		3	
1125+00	RT	PRA	AGG	36	20	10	31		4	
1152+66	RT	PRA	HMA	50	16	20	73	6		73
1161+60	RT	FE	AGG	150	89	10	133		15	
1228+62	RT	CE	AGG	60	28	10	49		6	
1241+69	RT	PE	AGG	67	25	10	51		6	
RT TOTAL								71	136	836

ENTRANCE SCHEDULE, CONT'D										
STATION	RT / LT	TYPE	MATERIAL	WIDTH	WIDTH	DEPTH	AREA	INCIDENTAL HOT-MIX ASPHALT SURFACING	AGGREGATE SURFACE COURSE, TYPE B	SURFACE REMOVAL, VARIBLE DEPTH (SPECIAL)
				FRONT FEET	BACK FEET					
665+79	LT	FE	AGG	54	30	10	47		5	
704+26	LT	FE	AGG	45	36	10	45		5	
730+95	LT	PRA	HMA	48	18	18	66	6		66
748+50	LT	PRA	HMA	41	32	8	32	3		32
750+95	LT	PE	AGG	25	10	10	19		2	
752+73	LT	PRA	HMA	40	20	12	40	3		40
755+68	LT	PE	AGG	25	15	10	22		3	
757+83	LT	PRA	HMA	44	21	15	54	5		54
762+70	LT	PRA	HMA	46	28	10	41	3		41
765+20	LT	PE	AGG	26	12	10	21		2	
767+35	LT	PRA	HMA	41	26	10	37	3		37
772+25	LT	PRA	HMA	37	21	10	32	3		32
773+79	LT	CE	AGG	77	60	10	76		9	
775+82	LT	CE	AGG	50	33	10	46		5	
776+86	LT	CE	AGG	50	33	10	46		5	
813+78	LT	PRA	AGG	65	31	10	53		6	
855+48	LT	PE	AGG	55	20	10	42		5	
886+57	LT	PE	AGG	45	20	10	36		4	
891+61	LT	FE	AGG	31	14	10	25		3	
898+50	LT	PE	AGG	94	27	10	67		8	
912+45	LT	FE	AGG	33	19	10	29		3	
917+89	LT	PE	AGG	50	13	10	35		4	
919+72	LT	FE	AGG	30	12	10	23		3	
942+50	LT	FE	AGG	24	12	10	20		2	
953+94	LT	PE	AGG	90	15	10	58		7	
983+23	LT	PRA	AGG	50	20	15	58		7	
1017+54	LT	PRA	AGG	39	19	10	32		4	
1036+59	LT	PRA	AGG	57	22	10	44		5	
1125+17	LT	PRA	AGG	35	18	10	29		3	
1152+80	LT	PE	AGG	65	33	10	54		6	
1241+69	LT	FE	AGG	30	12	10	23		3	
1268+34	LT	FE	AGG	20	12	10	18		2	
LT TOTAL								26	111	302
TOTAL=								97	247	1138

MODEL: Default
 FILE: \\mame-pw-beadley.com\FW\DOT\Documents\DOT Office\Dir\dir: 7\Project\74B13\CADD\DATA\CAD\Sheet\074B13-PS-Entrance.sch
 2/8/2022

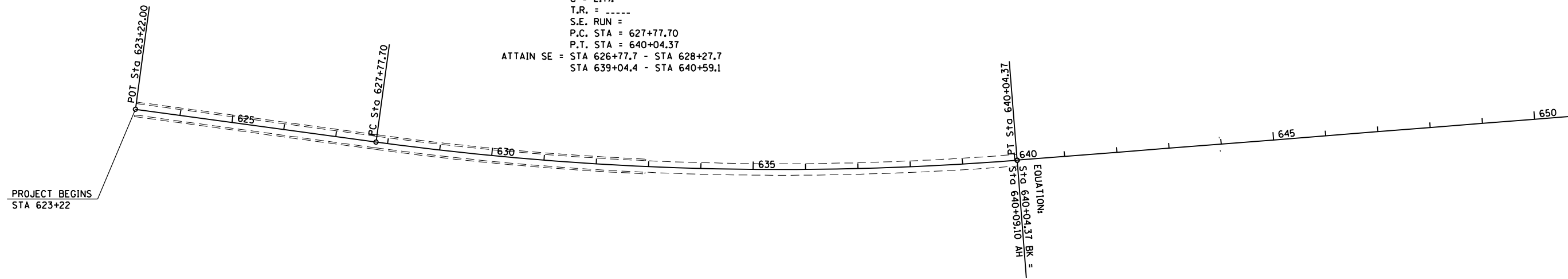
USER NAME = stefnrmk	DESIGNED -	REVISED -
PLOT SCALE = 100,0000' / in.	DRAWN -	REVISED -
PLOT DATE = 2/8/2022	CHECKED -	REVISED -
	DATE -	REVISED -

**STATE OF ILLINOIS
DEPARTMENT OF TRANSPORTATION**

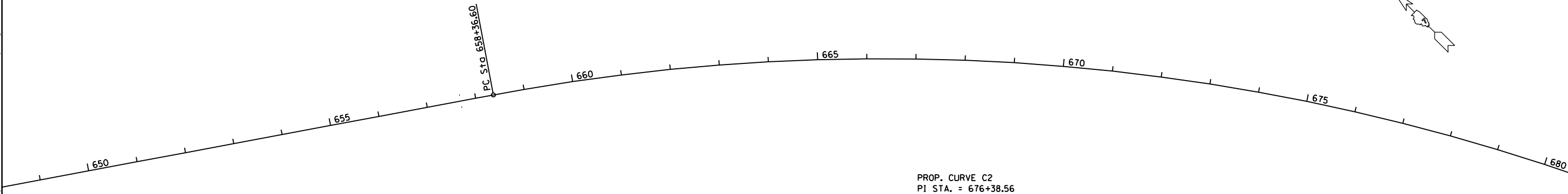
SCHEDULES			
SCALE:	SHEET	OF	SHEETS
	STA.	TO	STA.

F.A.P. RTE.	SECTION	COUNTY	TOTAL SHEETS	SHEET NO.
781	109RS-3	LAWRENCE	22	8
CONTRACT NO. 74B13				
ILLINOIS FED. AID PROJECT				

PROP. CURVE C1
 PI STA. = 633+93.39
 Δ = 12° 16' 00" (LT)
 D = 1° 00' 00"
 R = 5,729.59'
 T = 615.69'
 L = 1,226.67'
 E = 32.99'
 e = 2.7%
 T.R. = -----
 S.E. RUN =
 P.C. STA = 627+77.70
 P.T. STA = 640+04.37
 ATTAIN SE = STA 626+77.7 - STA 628+27.7
 STA 639+04.4 - STA 640+59.1



PROP. CURVE C2
 PI STA. = 676+38.56
 Δ = 45° 30' 00" (RT)
 D = 1° 20' 00"
 R = 4,297.18'
 T = 1,801.96'
 L = 3,412.50'
 E = 362.52'
 e = 3.4%
 T.R. = -----
 S.E. RUN =
 P.C. STA = 658+36.60
 P.T. STA = 692+49.10
 ATTAIN SE = STA 657+36.6 - STA 658+86.6
 STA 691+99.1 - STA 694+08



MODEL: Default
 FILE: \\mupc-pw\uldest-pw-beadefy.com\P\W\DOT\Documents\DOT Office\Director_T\Projects\74B13\CADD\DATA\CAD\Sheet\74B13-she1.dwg

USER NAME = steffnmk	DESIGNED -	REVISED -
	DRAWN -	REVISED -
PLOT SCALE = 210,0000' / in.	CHECKED -	REVISED -
PLOT DATE = 2/8/2022	DATE -	REVISED -

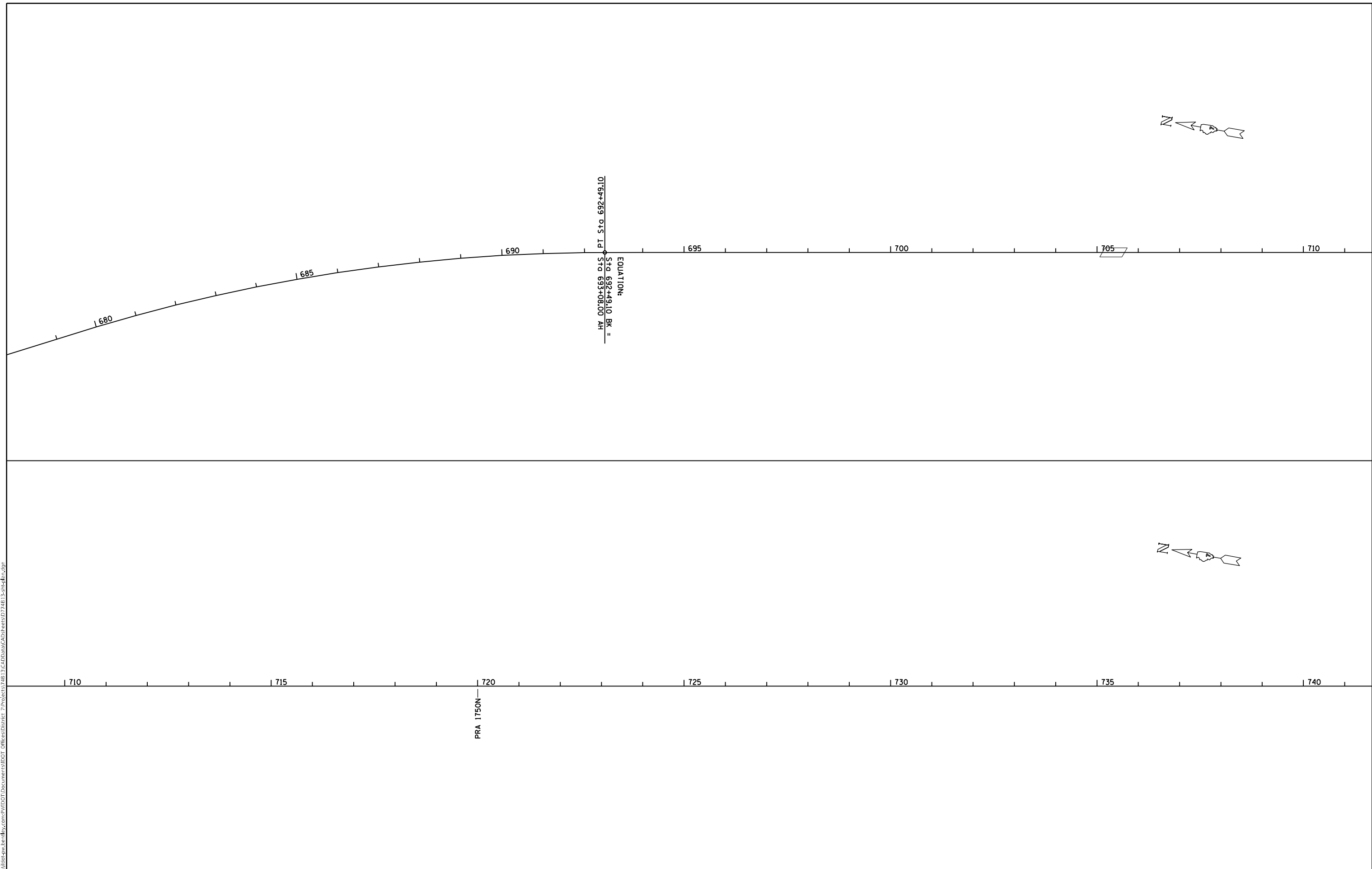
**STATE OF ILLINOIS
 DEPARTMENT OF TRANSPORTATION**

PLAN SHEETS

SCALE: SHEET OF SHEETS STA. TO STA.

F.A.P. RTE.	SECTION	COUNTY	TOTAL SHEETS	SHEET NO.
781	109RS-3	LAWRENCE	22	9
CONTRACT NO. 74B13				
ILLINOIS FED. AID PROJECT				

MODEL: Default
 FILE: \\na11c:\pub\jst-cw-beckley.com\PIV\DOT\Documents\DOT Office\Director_7\Project\74B13\CADD\DATA\CAD\Sheets\74B13-sheets.dgn



USER NAME = stefenmk	DESIGNED -	REVISED -
	DRAWN -	REVISED -
PLOT SCALE = 210,0000' / in.	CHECKED -	REVISED -
PLOT DATE = 2/8/2022	DATE -	REVISED -

**STATE OF ILLINOIS
 DEPARTMENT OF TRANSPORTATION**

PLAN SHEETS			
SCALE:	SHEET	OF	SHEETS
	STA.	TO	STA.

F.A.P. RTE.	SECTION	COUNTY	TOTAL SHEETS	SHEET NO.
781	109RS-3	LAWRENCE	22	10
			CONTRACT NO. 74B13	
ILLINOIS FED. AID PROJECT				

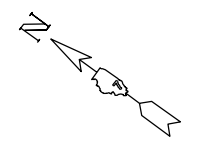


740 745 750 755 760 765 770

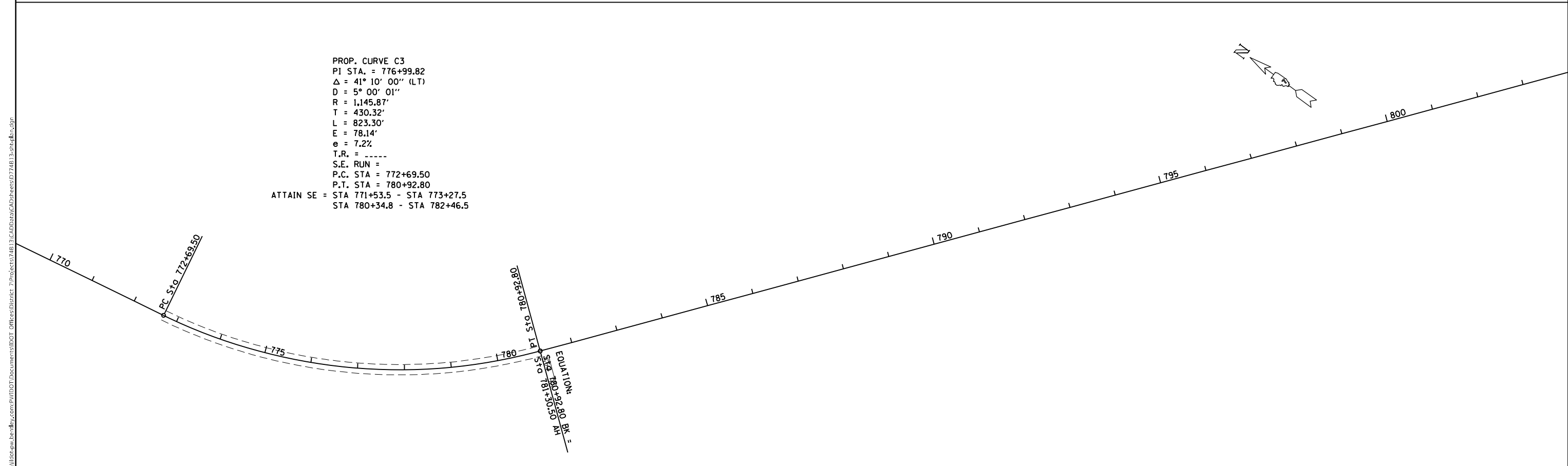
PRA 1700N

PRA 1670N

PROP. CURVE C3
 PI STA. = 776+99.82
 Δ = 41° 10' 00" (LT)
 D = 5° 00' 01"
 R = 1,145.87'
 T = 430.32'
 L = 823.30'
 E = 78.14'
 e = 7.2%
 T.R. = -----
 S.E. RUN =
 P.C. STA = 772+69.50
 P.T. STA = 780+92.80
 ATTAIN SE = STA 771+53.5 - STA 773+27.5
 STA 780+34.8 - STA 782+46.5



MODEL: Default
 FILE NAME: p:\ultra-cw-bead\p\p\DOT\Documents\DOT Office\Director_7\Project\74B13\CADD\DATA\CAD\Sheet\74B13-shd13.dgn



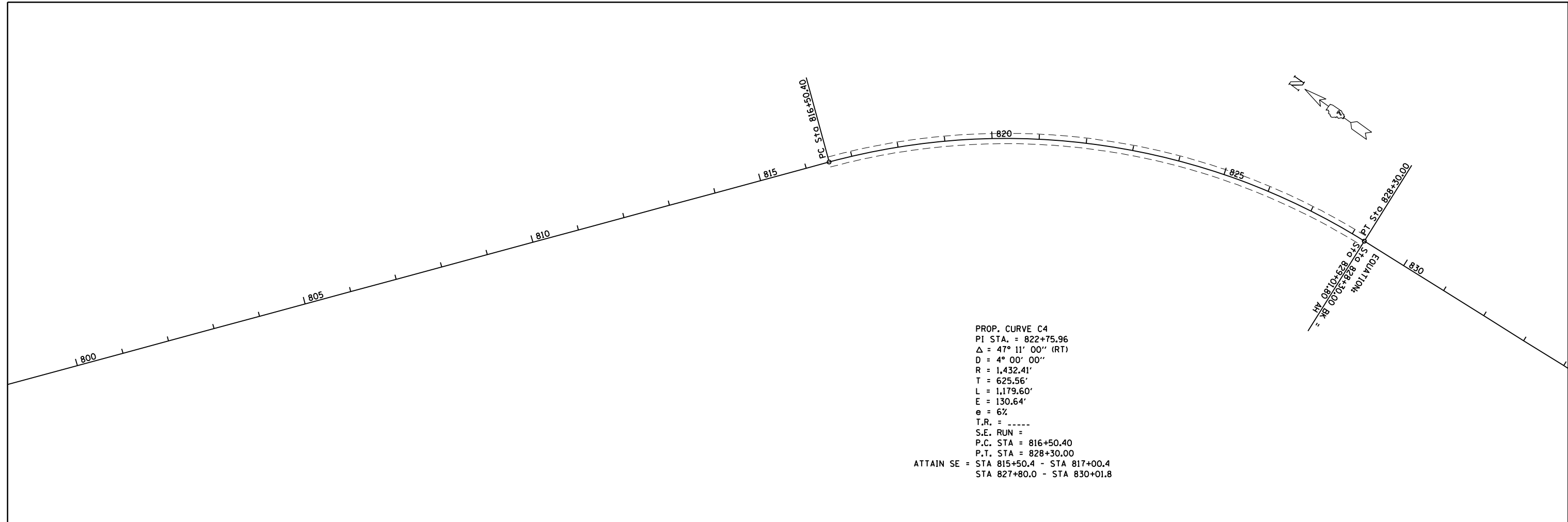
USER NAME = stefenmk	DESIGNED -	REVISED -
	DRAWN -	REVISED -
PLOT SCALE = 210,0000' / in.	CHECKED -	REVISED -
PLOT DATE = 2/8/2022	DATE -	REVISED -

**STATE OF ILLINOIS
 DEPARTMENT OF TRANSPORTATION**

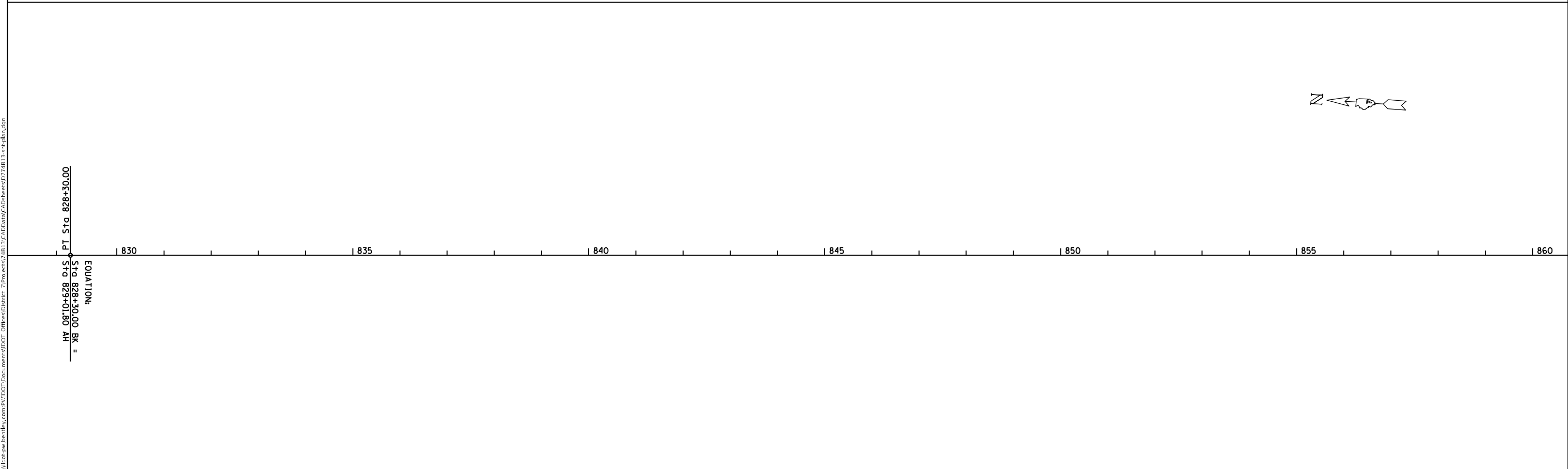
PLAN SHEETS

SCALE: SHEET OF SHEETS STA. TO STA.

F.A.P. RTE.	SECTION	COUNTY	TOTAL SHEETS	SHEET NO.
781	109RS-3	LAWRENCE	22	11
CONTRACT NO. 74B13				
ILLINOIS FED. AID PROJECT				



PROP. CURVE C4
 PI STA. = 822+75.96
 Δ = 47° 11' 00" (RT)
 D = 4° 00' 00"
 R = 1,432.41'
 T = 625.56'
 L = 1,179.60'
 E = 130.64'
 e = 6%
 T.R. = -----
 S.E. RUN =
 P.C. STA = 816+50.40
 P.T. STA = 828+30.00
 ATTAIN SE = STA 815+50.4 - STA 817+00.4
 STA 827+80.0 - STA 830+01.8



EQUATION:
 PT STA 828+30.00
 STG 829+01.80 AH =

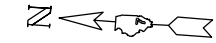
MODEL: Default
 FILE NAME: p:\uldest-pw-bead\paw.com\PIV\DOT\Documents\DOT_offices\Dir\ret_7\Project\74B13\CADD\data\CAD\sheet\74B13-shd-plan.dgn

USER NAME = stefnkmk	DESIGNED -	REVISED -
	DRAWN -	REVISED -
PLOT SCALE = 210,0000 ' / in.	CHECKED -	REVISED -
PLOT DATE = 2/8/2022	DATE -	REVISED -

STATE OF ILLINOIS
DEPARTMENT OF TRANSPORTATION

PLAN SHEETS			
SCALE:	SHEET	OF	SHEETS
	STA.	TO	STA.

F.A.P. RTE.	SECTION	COUNTY	TOTAL SHEETS	SHEET NO.
781	109RS-3	LAWRENCE	22	12
			CONTRACT NO. 74B13	
ILLINOIS FED. AID PROJECT				



860 865 870 875 880 885 890



890 895 900 905 910 915 920

MODEL: Default
FILE: \\mupc-pw-bentley.com\PW\DOT\Documents\DOT Offices\District 7\Projects\74B13\CADD\Drawings\CAD\Sheets\74B13-sheets.dgn

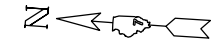
USER NAME = stefenmk	DESIGNED -	REVISED -
	DRAWN -	REVISED -
PLOT SCALE = 210,0000 ' / in.	CHECKED -	REVISED -
PLOT DATE = 2/8/2022	DATE -	REVISED -

**STATE OF ILLINOIS
DEPARTMENT OF TRANSPORTATION**

PLAN SHEETS

SCALE: SHEET OF SHEETS STA. TO STA.

F.A.P. RTE.	SECTION	COUNTY	TOTAL SHEETS	SHEET NO.
781	109RS-3	LAWRENCE	22	13
CONTRACT NO. 74B13				
ILLINOIS FED. AID PROJECT				



920

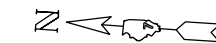
925

930

935

940

945



950

955

960

965

970

975

MODEL: Default
FILE NAME: p:\ultra-cw-beadley.com\PW\DOT\Documents\DOT Office\District 7\Project\74B13\CADD\DATA\CAD\Sheets\74B13-sheets.dgn

USER NAME = stefenmk	DESIGNED -	REVISED -
	DRAWN -	REVISED -
PLOT SCALE = 210,0000 ' / in.	CHECKED -	REVISED -
PLOT DATE = 2/8/2022	DATE -	REVISED -

**STATE OF ILLINOIS
DEPARTMENT OF TRANSPORTATION**

PLAN SHEETS

SCALE: SHEET OF SHEETS STA. TO STA.

F.A.P. RTE.	SECTION	COUNTY	TOTAL SHEETS	SHEET NO.
781	109RS-3	LAWRENCE	22	14
				CONTRACT NO. 74B13
ILLINOIS FED. AID PROJECT				



980

985

990

995

1000

1005

1010



1010

1015

1020

1025

1030

1035

1040

MODEL: Default
FILE NAME: p:\subject\aw_bentley.com\P\I\DOT\Documents\DOT_offices\Dir\drf_7\Project\74B13\CAD\DATA\CAD\Sheets\74B13-she15.dgn

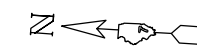
USER NAME = steffenmk	DESIGNED -	REVISED -
	DRAWN -	REVISED -
PLOT SCALE = 210,0000 ' / in.	CHECKED -	REVISED -
PLOT DATE = 2/8/2022	DATE -	REVISED -

**STATE OF ILLINOIS
DEPARTMENT OF TRANSPORTATION**

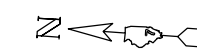
PLAN SHEETS

SCALE: SHEET OF SHEETS STA. TO STA.

F.A.P. RTE.	SECTION	COUNTY	TOTAL SHEETS	SHEET NO.
781	109RS-3	LAWRENCE	22	15
CONTRACT NO. 74B13			ILLINOIS FED. AID PROJECT	



1040 1045 1050 1055 1060 1065 1070



1070 1075 1080 1085 1090 1095 1100

MODEL: Default
FILE NAME: p:\u0002\paw_bentley.com\PW\DOT\Documents\DOT_offices\Director_7\Projects\74B13\CADD\DATA\CAD\Sheets\74B13-sheets.dgn

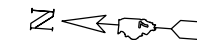
USER NAME = stefenmk	DESIGNED -	REVISED -
	DRAWN -	REVISED -
PLOT SCALE = 210,0000 ' / in.	CHECKED -	REVISED -
PLOT DATE = 2/8/2022	DATE -	REVISED -

**STATE OF ILLINOIS
DEPARTMENT OF TRANSPORTATION**

PLAN SHEETS

SCALE: SHEET OF SHEETS STA. TO STA.

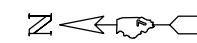
F.A.P. RTE.	SECTION	COUNTY	TOTAL SHEETS	SHEET NO.
781	109RS-3	LAWRENCE	22	16
			CONTRACT NO. 74B13	
			ILLINOIS FED. AID PROJECT	



PC Sta 1123+72.20

1100 1105 1110 1115 1120 1125 1130

PROP. CURVE C5
 PI STA. = 1129+99.98
 Δ = 4° 11' 00" (RT)
 D = 0° 20' 00"
 R = 17,188.73'
 T = 627.78'
 L = 1,255.00'
 E = 11.46'
 e = 1.58%
 T.R. = -----
 S.E. RUN =
 P.C. STA = 1123+72.20
 P.T. STA = 1136+27.20
 ATTAIN SE = STA 1122+72.2 - STA 1124+22.2
 STA 1135+77.2 - STA 1137+27.8



PT Sta 1136+27.20
 EQUATION:
 Sta 1136+27.20 BK =
 Sta 1136+27.80 AH

1130 1135 1140 1145 1150 1155 1160

MODEL: Default
FILE NAME: p:\ultra-cw-bead\paw.com\PI\DOT\Documents\DOT\offices\Dir\dir_7\Project\74B13\CAD\DATA\CAD\Sheet\74B13-shd-pln.dgn

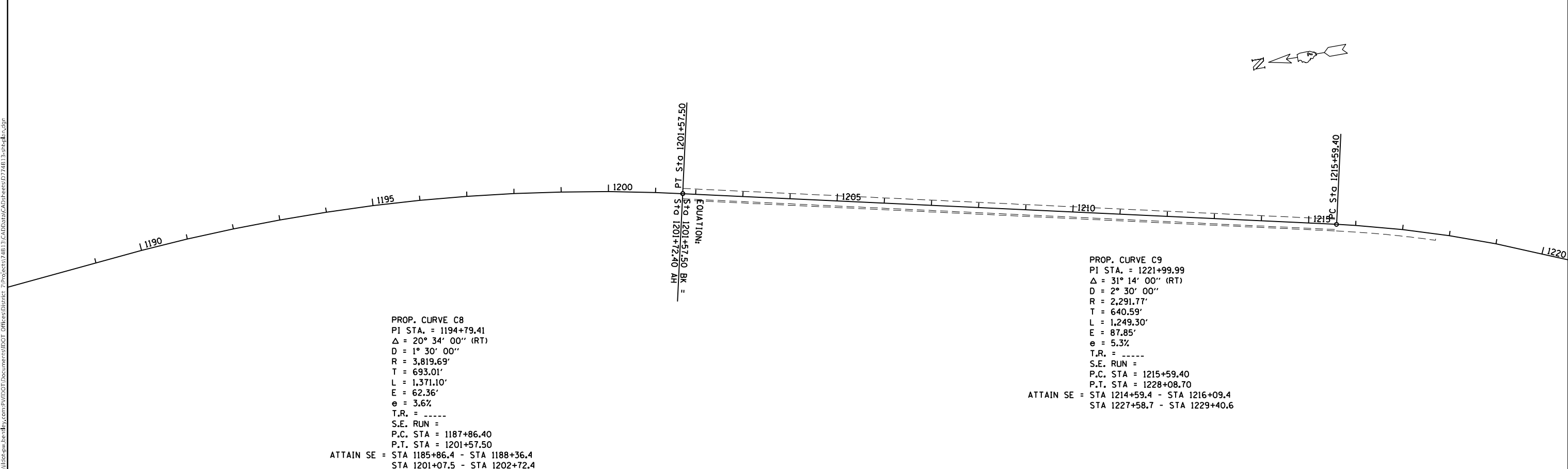
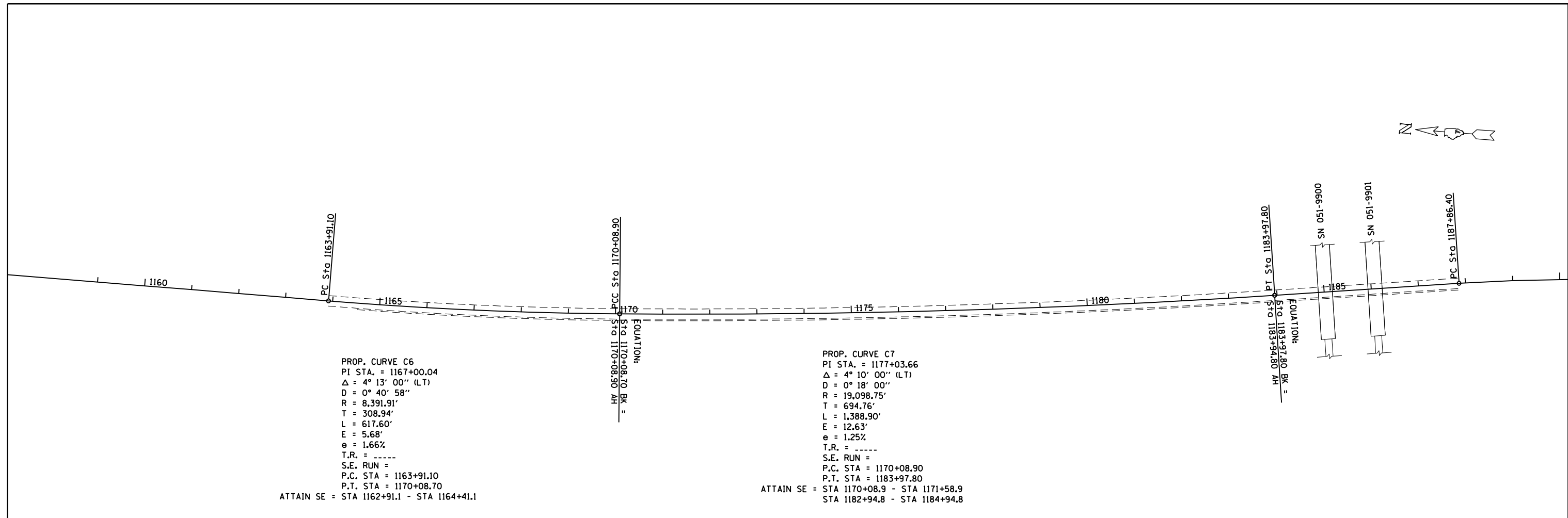
USER NAME = steffenmk	DESIGNED -	REVISED -
	DRAWN -	REVISED -
PLOT SCALE = 210,0000 ' / in.	CHECKED -	REVISED -
PLOT DATE = 2/8/2022	DATE -	REVISED -

**STATE OF ILLINOIS
DEPARTMENT OF TRANSPORTATION**

PLAN SHEETS

SCALE: SHEET OF SHEETS STA. TO STA.

F.A.P. RTE.	SECTION	COUNTY	TOTAL SHEETS	SHEET NO.
781	109RS-3	LAWRENCE	22	17
CONTRACT NO. 74B13				
ILLINOIS FED. AID PROJECT				



MODEL: Default
 FILE NAME: p:\ultra\paw\bea\paw.com\PIV\DOT\Documents\DOT Office\Dir\dir 7\Project\74B13\CADD\DATA\CAD\Sheet\74B13-shd-18.dgn

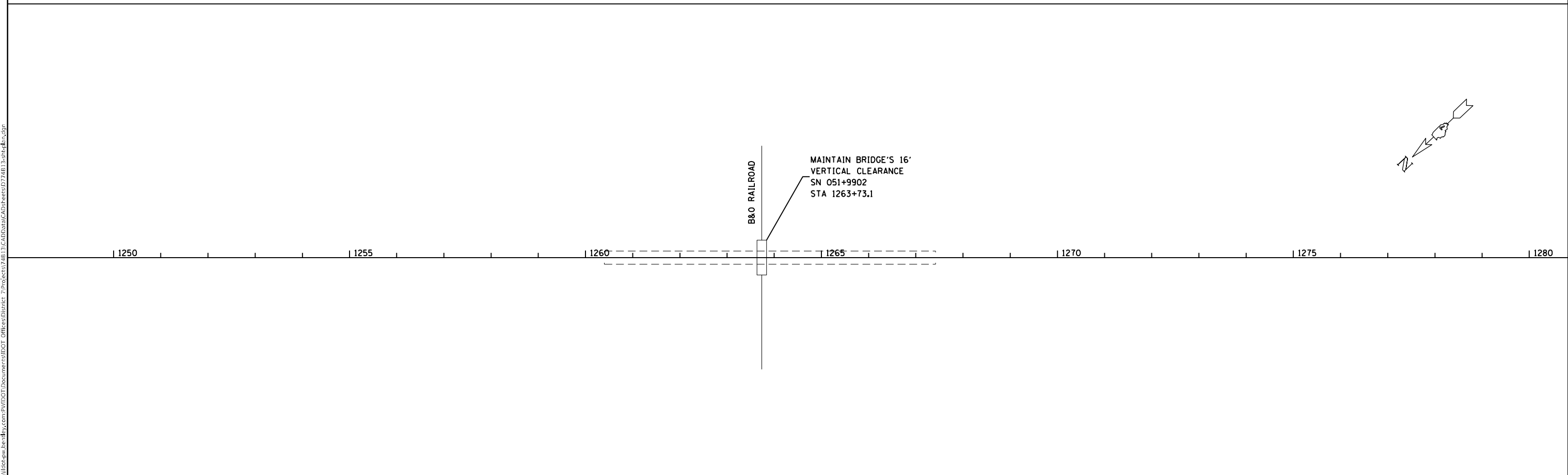
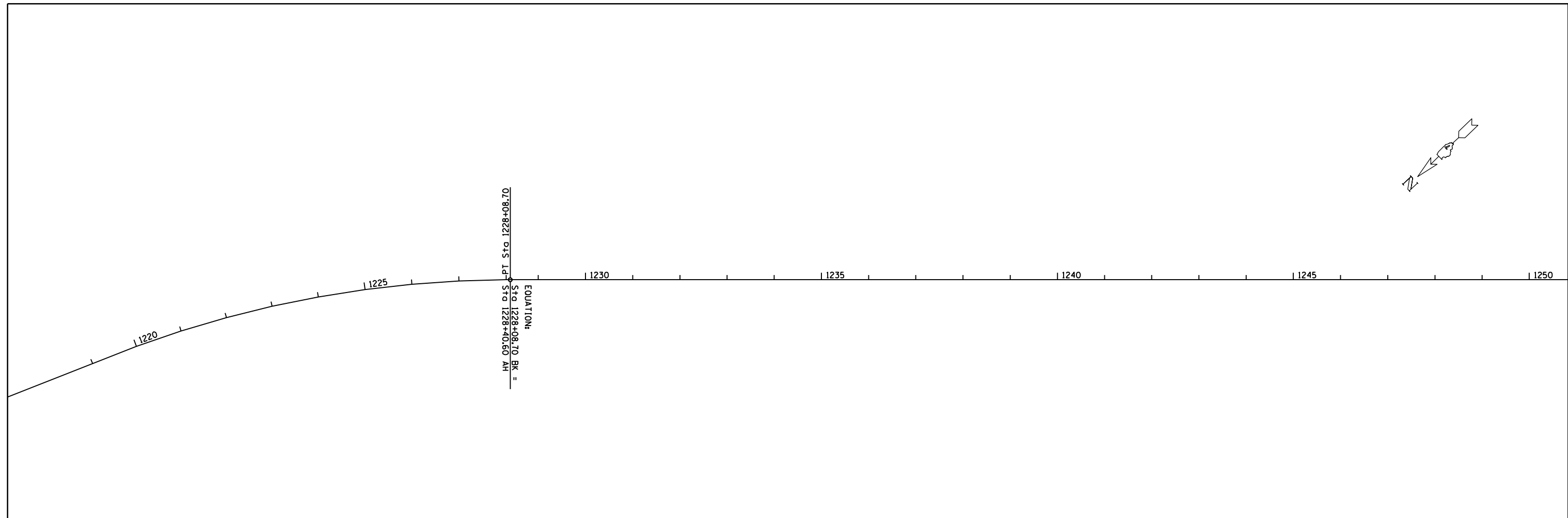
USER NAME = stefenmk	DESIGNED -	REVISED -
PLOT SCALE = 210,0000' / in.	DRAWN -	REVISED -
PLOT DATE = 2/8/2022	CHECKED -	REVISED -
	DATE -	REVISED -

STATE OF ILLINOIS
DEPARTMENT OF TRANSPORTATION

SCALE:		SHEET		OF	SHEETS	STA.	TO STA.
		781	109RS-3				

F.A.P. RTE.	SECTION	COUNTY	TOTAL SHEETS	SHEET NO.
781	109RS-3	LAWRENCE	22	18
CONTRACT NO. 74B13				
ILLINOIS FED. AID PROJECT				

MODEL: Default
 FILE: \\MAILSrv\public\aw-bee\file.com\PIV\DOT\Documents\DOT\Office\Dir\dir_7\Project\74B13\CADD\DATA\CAD\Sheet\74B13-3-Plan.dgn



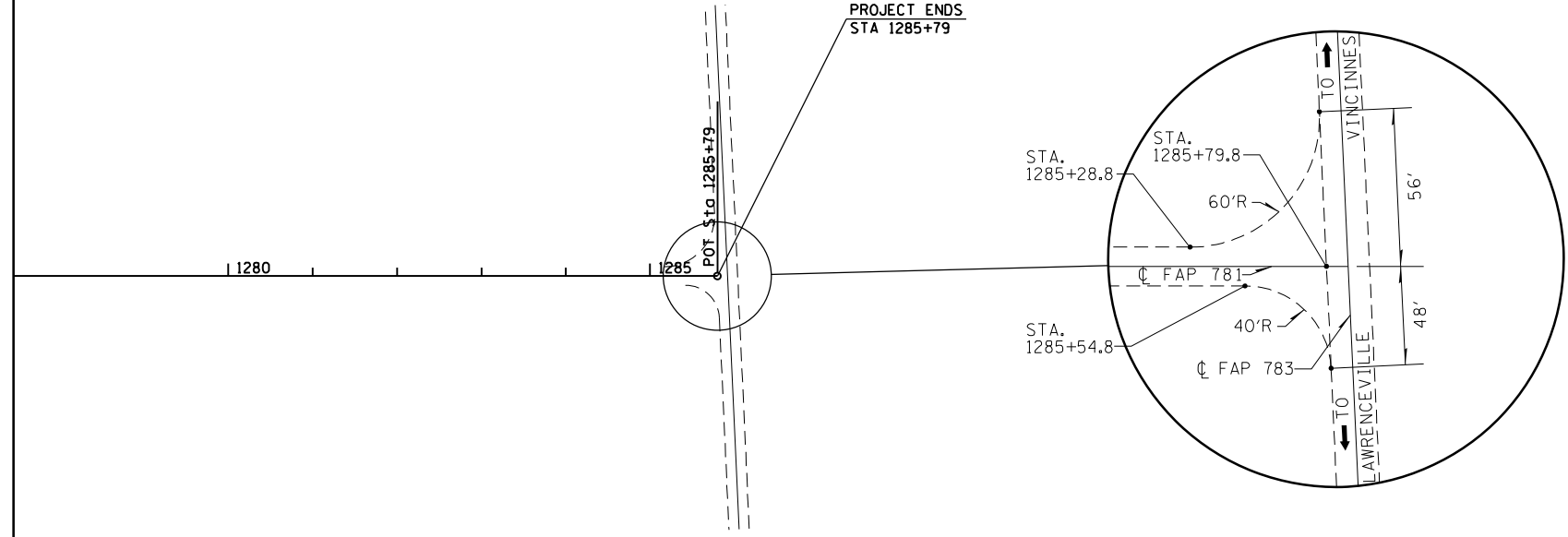
USER NAME = steffenmk	DESIGNED -	REVISED -
	DRAWN -	REVISED -
PLOT SCALE = 210,0000' / in.	CHECKED -	REVISED -
PLOT DATE = 2/8/2022	DATE -	REVISED -

**STATE OF ILLINOIS
 DEPARTMENT OF TRANSPORTATION**

PLAN SHEETS			
SCALE:	SHEET	OF	SHEETS
	STA.	TO	STA.

F.A.P. RTE.	SECTION	COUNTY	TOTAL SHEETS	SHEET NO.
781	109RS-3	LAWRENCE	22	19
CONTRACT NO. 74B13				
ILLINOIS FED. AID PROJECT				

MODEL: Default
 FILE NAME: p:\project-aw-beadley.com\PIV\DOT\Documents\DOT Office\Dir\dir_7\Project\74B13\CADD\data\CAD\sheet\74B13-she11a.dgn

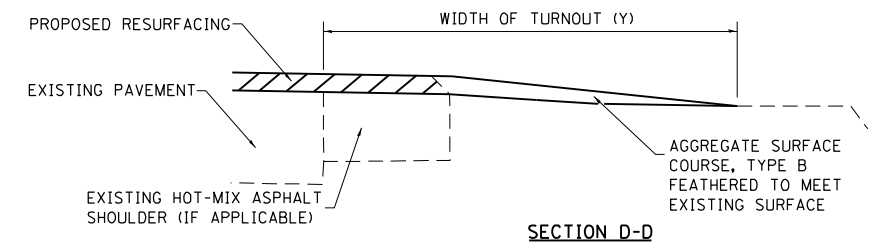
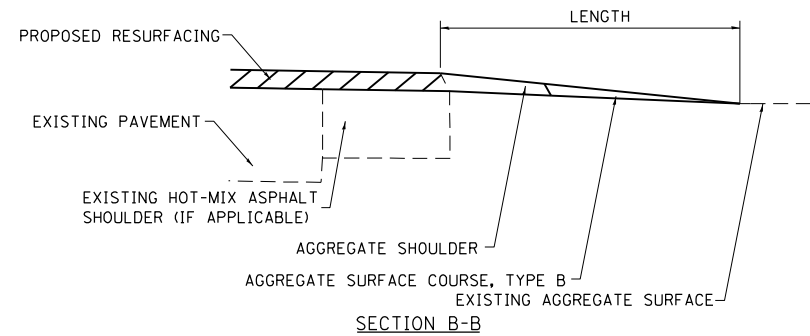
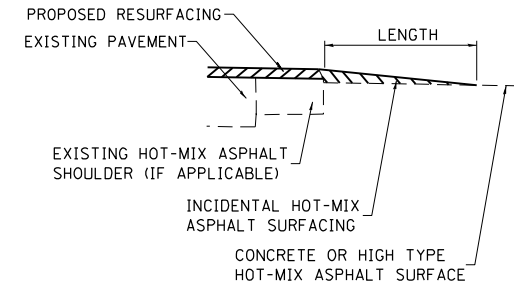
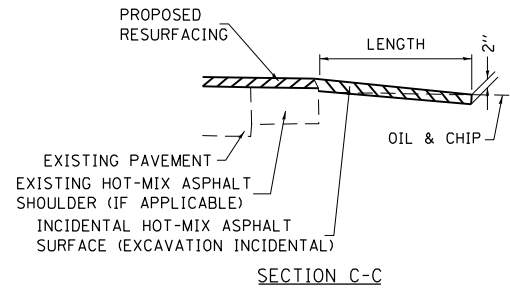
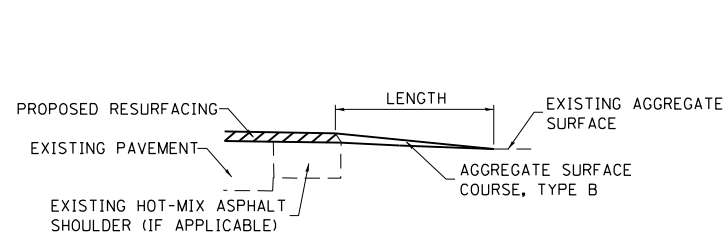
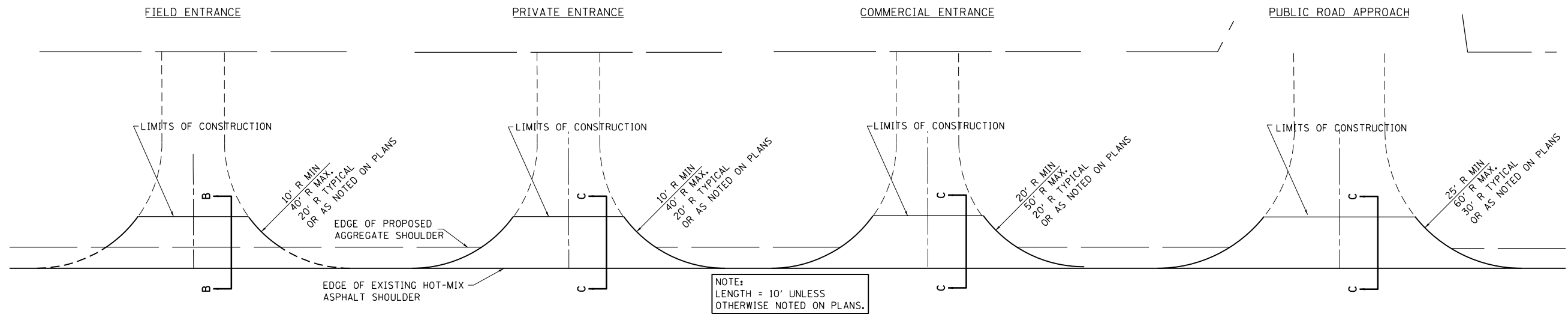


USER NAME = stefenmk	DESIGNED -	REVISED -
	DRAWN -	REVISED -
PLOT SCALE = 210,0000 ' / in.	CHECKED -	REVISED -
PLOT DATE = 2/8/2022	DATE -	REVISED -

**STATE OF ILLINOIS
 DEPARTMENT OF TRANSPORTATION**

PLAN SHEETS		SCALE:	SHEET	OF	SHEETS	STA.	TO STA.

F.A.P. RTE. 781	SECTION 109RS-3	COUNTY LAWRENCE	TOTAL SHEETS 22	SHEET NO. 20
CONTRACT NO. 74B13				
ILLINOIS FED. AID PROJECT				



NOTES

THE COST OF THE ASPHALT MATERIALS, AND AGGREGATE (PRIME COAT) FOR ENTRANCES AND PUBLIC ROADS AND APPROACHES SHALL BE INCLUDED IN THE PAY ITEM INCIDENTAL HOT-MIX ASPHALT SURFACING.

THE COST OF EXCAVATION IS INCLUDED IN THE PAY ITEM INCIDENTAL HOT-MIX ASPHALT SURFACING.

IF THERE IS NOT EXISTING HOT-MIX ASPHALT SHOULDER THEN THE ENTRANCE TAPER STARTS AT THE EDGE OF EXISTING PAVEMENT.

THE COST OF THE BITUMINOUS MATERIALS AND AGGREGATE (PRIME COAT) FOR ENTRANCES AND PUBLIC ROAD APPROACHES SHALL BE INCLUDED IN THE PAY ITEM INCIDENTAL HOT-MIX ASPHALT SURFACING.

TYPICAL SECTION AT MAILBOX TURNOUT

NOTE: SEE STANDARD 406201 FOR MAILBOX TURNOUT DETAILS

FILE NAME =	USER NAME = steffenk	DESIGNED -	REVISED -	STATE OF ILLINOIS DEPARTMENT OF TRANSPORTATION	ENTRANCE DETAILS			F.A.P. R.T.E.	SECTION	COUNTY	TOTAL SHEETS	SHEET NO.	
pw:\idot-pw.bentley.com\PWIDOT\Documents\IDOT Offices\District 7\Projects\74B13\CADD\Drawings\Drawings\74B13-sht-details.dgn	PLotted	CHECKED -	REVISED -					781	109RS-3	LAWRENCE	22	21	
PLOT SCALE = 100.0000' / 1in.	DATE -	REVISED -	REVISED -		SCALE: 50			SHEET NO. 1 OF 2 SHEETS		STA. TO STA.		CONTRACT NO. 74B13	
PLOT DATE = 2/8/2022	DATE -	REVISED -	REVISED -		ILLINOIS FED. AID PROJECT								