

STATE OF ILLINOIS
DEPARTMENT OF TRANSPORTATION

F.A.P. RTE.	SECTION	COUNTY	TOTAL SHEETS	SHEET NO.
314	(30,66,108,109,110,111)PP-1	MADISON	6	1
		ILLINOIS	CONTRACT NO. 76P86	

FOR INDEX OF SHEETS, SEE SHEET NO. 2

ADI

140 TO 1-55

2021 ADT=3300 (ACTUAL)
2022 ADT=3350 (ESTIMATED)
2042 ADT=3900 (ESTIMATED)
SU=5.5% MU=12.1%

IL 143 TO 140

2021 ADT=3950 (ACTUAL)
2022 ADT=4000 (ESTIMATED)
2042 ADT=4700 (ESTIMATED)
SU=6.3% MU=12.7%

US 70 TO IL 143

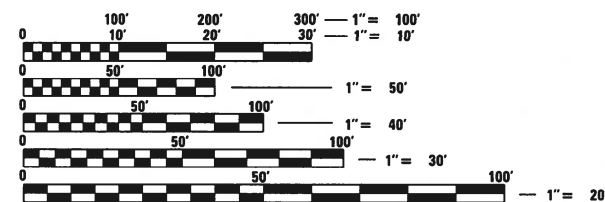
2021 ADT=5000 (ACTUAL)
2022 ADT=5500 (ESTIMATED)
2042 ADT=5900 (ESTIMATED)
SU=4.5% MU=12.5%

US 40 TO US 70

2021 ADT=6600 (ACTUAL)
2022 ADT=6700 (ESTIMATED)
2042 ADT=7800 (ESTIMATED)
SU=8.7% MU=14.4%

BLUE SPRUCE LANE TO US 40

2021 ADT=5950 (ACTUAL)
2022 ADT=6000 (ESTIMATED)
2042 ADT=7000 (ESTIMATED)
SU=4.8% MU=10.9%



FULL SIZE PLANS HAVE BEEN PREPARED USING STANDARD ENGINEERING SCALES. REDUCED SIZED PLANS WILL NOT CONFORM TO STANDARD SCALES. IN MAKING MEASUREMENTS ON REDUCED PLANS, THE ABOVE SCALES MAY BE USED.

J.U.L.I.E.
JOINT UTILITY LOCATION INFORMATION FOR EXCAVATORS
1-800-892-0123
OR 811

PROJECT ENGINEER: CHERYL KEPLAR
PROJECT MANAGER: TONI MANN

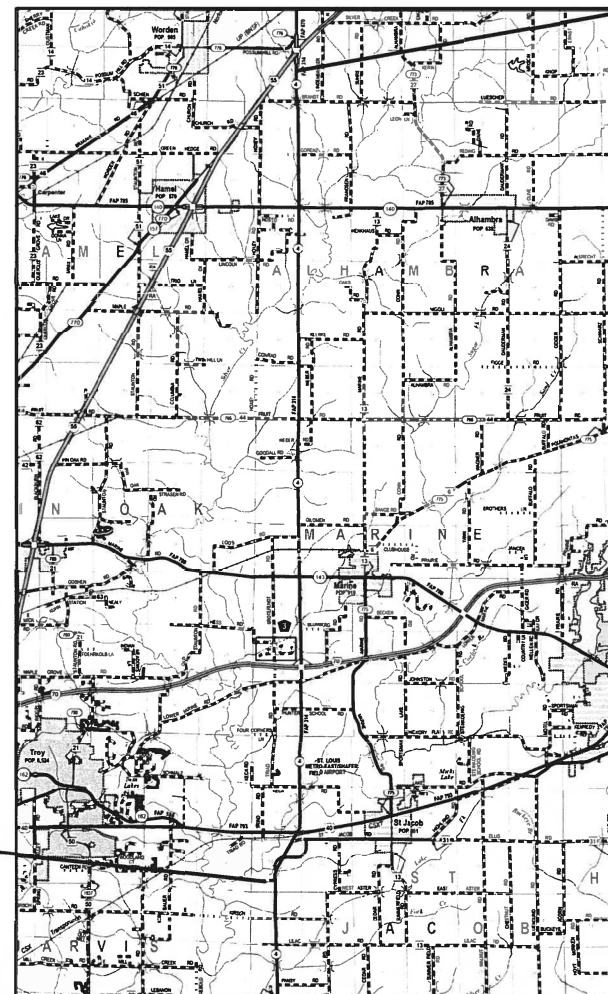
CONTRACT NO. 76P86

**PROPOSED
HIGHWAY PLANS**

FAP ROUTE 314 (IL 004)
SECTION (30,66,108,109,110,111)PP-1

PAVEMENT PATCHING
MADISON COUNTY

C-98-059-22



PROJECT BEGINS
M.P. 0.00
LAT:38.70902
LONG:-89.80730

PROJECT ENDS
M.P. 15.55
LAT:38.92735
LONG:-89.80145

GROSS LENGTH = 82104 FT. = 15.55 MILE

D-98-030-22



STATE OF ILLINOIS
DEPARTMENT OF TRANSPORTATION

SUBMITTED Feb 10 22
20
Stephen Travias
REGIONAL ENGINEER

March 25 2022
[Signature]
ENGINEER OF DESIGN AND ENVIRONMENT

March 28 2022
Stephen M. Travis
DIRECTOR OF HIGHWAYS PROJECT IMPLEMENTATION

PRINTED BY THE AUTHORITY
OF THE STATE OF ILLINOIS

GENERAL NOTES

1. NO SURVEY WAS PERFORMED FOR THIS PROJECT AND THE PLANS WERE CREATED USING MICROFILM AND FIELD MEASUREMENTS.
2. THE PROPOSED PAVEMENT MARKING SHALL MATCH THE LOCATIONS OF THE EXISTING PAVEMENT MARKING, AS DIRECTED BY THE ENGINEER.

INDEX OF SHEETS

1. COVER SHEET
2. INDEX OF SHEETS, HIGHWAY STANDARDS, GENERAL NOTES, AND COMMITMENTS
3. SUMMARY QUANTITIES
4. TYPICAL SECTIONS
- 5.-6. SCHEDULES

STANDARDS

000001-08	STANDARD SYMBOLS, ABBREVIATIONS AND PATTERNS
001006	DECIMAL OF AN INCH AND OF A FOOT
442201-03	CLASS C AND D PATCHES
701201-05	LANE CLOSURE, 2L, 2W, DAY ONLY, FOR SPEEDS \geq 45 MPH
701301-04	LANE CLOSURE, 2L, 2W, SHORT TIME OPERATIONS
701306-04	LANE CLOSURE, 2L, 2W, SLOW MOVING OPERATIONS DAY ONLY, FOR SPEEDS \geq 45 MPH
701311-03	LANE CLOSURE 2L, 2W MOVING OPERATIONS- DAY-ONLY
701336-07	LANE CLOSURE, 2L, 2W WORK AREAS IN SERIES, FOR SPEEDS \geq 45 MPH
701901-08	TRAFFIC CONTROL DEVICES
780001-05	TYPICAL PAVEMENT MARKINGS
442201-03	CLASS C AND D PATCHES
780001-05	TYPICAL PAVEMENT MARKINGS

MIXTURE REQUIREMENTS

ROUTE	FAP 314
SECTION	(30,66,108,109,110,111)PP-1
COUNTY	MADISON
CONTRACT	76P86

DESCRIPTION	PATCHING - CM ON IL 4 FROM I-55 TO BLUE SPRUCE LN
--------------------	--

ADT (CONSTRUCTION YR):	6700
MU%	14.4
SU%	8.7
20 YR. ESAL'S:	5.89

MIXTURE USE	PATCHING	
	BINDER	PARTIAL DEPTH PATCH
AC/PG	PG 64-22	PG 64-22
RAP % (MAX)	SEE SPECIAL PROVISION	SEE SPECIAL PROVISION
DESIGN AIR VOIDS	4.0% @ Ndes = 90	4.0% @ Ndes = 90
MIX COMPOSITION (GRADATION MIXTURE)	IL 19.0	IL 9.5
FRICTION AGG	MIXTURE "B"	MIXTURE "D"
QUALITY MGMT PROGRAM	QC /QA	QC /QA
MATTRANDEV REQUIRED?	NO	NO

COMMITMENTS

NONE

REV. - MS

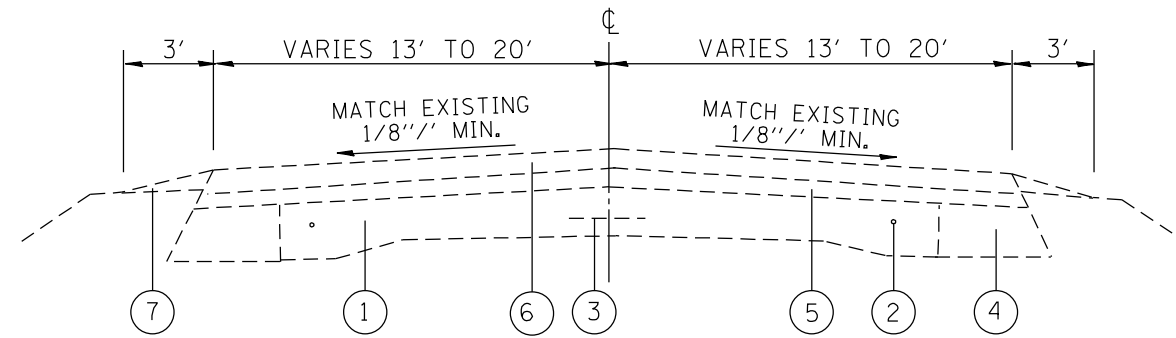
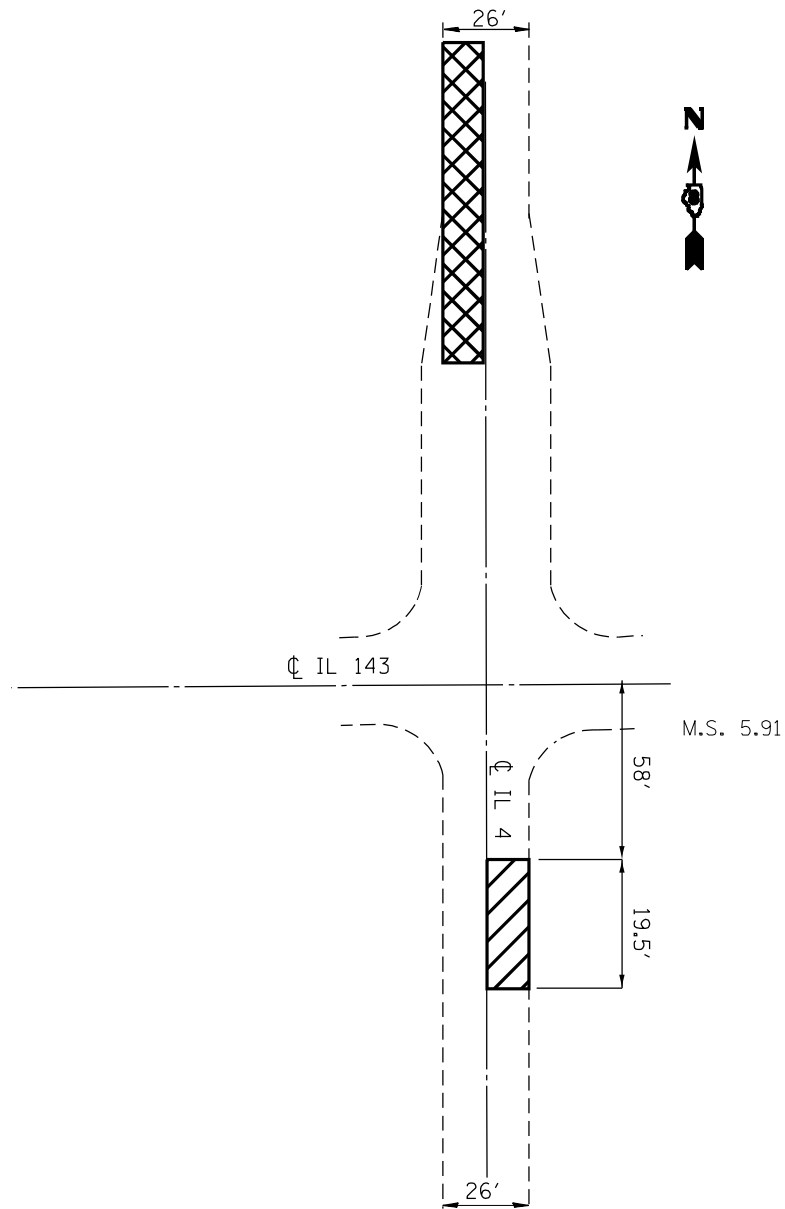
FILE NAME =	USER NAME = lewiska	DESIGNED -	REVISED -	STATE OF ILLINOIS DEPARTMENT OF TRANSPORTATION	INDEX OF SHEETS, HIGHWAY STANDARDS, GENERAL NOTES, AND COMMITMENTS	F.A.P. RTE.	SECTION	COUNTY	TOTAL SHEETS	SHEET NO.	
pw\idot-pr.bentley.com\PI\DOT\Documents\IDOT Offices\Dist-ict. 8\Projects\0876P86\CAD\0876P86-1111\PP-1	pw\idot-pr.bentley.com\PI\DOT\Documents\IDOT Offices\Dist-ict. 8\Projects\0876P86\CAD\0876P86-1111\PP-1	CHECKED -	REVISED -			314	(30,66,108,109,110,111)PP-1	RANDOLPH	6	2	
Default	PLOT SCALE = 100.0000' / 1in.	DATE -	REVISED -			CONTRACT NO. 76P86					
	PLOT DATE = 3/3/2022					ILLINOIS FED. AID PROJECT					

				CONSTR. CODE	
				100% STATE	
CODE NO.	ITEM	UNIT	TOTAL QUANTITY	ROADWAY	
				0005	RURAL
44200050	WELDED WIRE REINFORCEMENT	SQ YD	520	520	
44201798	CLASS D PATCHES, TYPE I, 13 INCH	SQ YD	64	64	
44201013	CLASS B PATCHES, TYPE IV, 13 INCH	SQ YD	520	520	
44201803	CLASS D PATCHES, TYPE II, 13 INCH	SQ YD	301	301	
44201299	DOWELL BARS 1 1/2"	EACH	42	42	
44201807	CLASS D PATCHES, TYPE III, 13 INCH	SQ YD	38	38	
44213200	SAW CUTS	FOOT	310	310	
44201809	CLASS D PATCHES, TYPE IV, 13 INCH	SQ YD	455	455	
44213204	TIE BARS 3/4"	EACH	80	80	
67100100	MOBILIZATION	L SUM	1	1	
70100450	TRAFFIC CONTROL AND PROTECTION, STANDARD 701201	L SUM	1	1	
70100460	TRAFFIC CONTROL AND PROTECTION, STANDARD 701306	L SUM	1	1	
70100600	TRAFFIC CONTROL AND PROTECTION, STANDARD 701336	L SUM	1	1	
* 78001110	PAINT PAVEMENT MARKING - LINE 4"	FOOT	12599	12599	
X4406030	PARTIAL DEPTH REMOVAL, TYPE I, 3"	SQ YD	7	7	
X4406230	PARTIAL DEPTH REMOVAL, TYPE II, 3"	SQ YD	450	450	
X4406430	PARTIAL DEPTH REMOVAL, TYPE III, 3"	SQ YD	224	224	
X4406630	PARTIAL DEPTH REMOVAL, TYPE IV, 3"	SQ YD	4160	4160	
X4421000	PARTIAL DEPTH PATCHING	TON	810	810	

* SPECIALTY ITEM

REV. - MS

FILE NAME =	USER NAME = lewisko	DESIGNED -	REVISED -	STATE OF ILLINOIS DEPARTMENT OF TRANSPORTATION	SUMMARY QUANTITIES			F.A.P. RTE.	SECTION	COUNTY	TOTAL SHEETS	SHEET NO.
pw\idat-pw.bentley.com\PWIDOT\Document\IDOT Offices\District 8\Projects\0876P86\CD\Drawings\CADsheets\0876P86-ht-500.dgn		REVISIONS	REVISIONS					314	(30,66,108,109,110,111)PP-1	MADISON	6	3
Default	PLOT SCALE = 100.0000' / in.	CHECKED -	REVISIONS		SCALE: SHEET OF SHEETS STA. TO STA.			CONTRACT NO. 76P86				
	PLOT DATE = 2/10/2022	DATE -	REVISIONS					ILLINOIS FED. AID PROJECT				



LEGEND

- ① EXISTING PCC PAVEMENT 9"-6"-9"
- ② EXISTING SMOOTH BAR, 7/8"
- ③ EXISTING DEFORMED BAR, 1/2"
- ④ EXISTING HMA BASE COURSE, 9"
- ⑤ EXISTING LEVELING BINDER (MACHINE METHOD), N70, 1 3/4"
- ⑥ EXISTING HOT-MIX ASPHALT SURFACE COURSE, MIX "C", N70, 1 1/2"
- ⑦ EXISTING AGGREGATE WEDGE SHOULDER, TYPE B

PATCH LOCATION SHOWN APPROXIMATE THE EXACT LOCATION WILL BE DETERMINED BY THE ENGINEER

REV. - MS

MODEL: Default
 FILE: \\mifs-pw-bentley.com\PW\DOT\Documents\DOT Office\Dir\dr. E\Project\0876986\CADD\DATA\CADD\Sheet\0876986-sh-ty-typical.dgn

USER NAME = leviska	DESIGNED -	REVISED -
	DRAWN -	REVISED -
PLOT SCALE = 100,0000' / in.	CHECKED -	REVISED -
PLOT DATE = 3/3/2022	DATE -	REVISED -

**STATE OF ILLINOIS
DEPARTMENT OF TRANSPORTATION**

TYPICAL SECTIONS

SCALE: SHEET OF SHEETS STA. TO STA.

F.A.P. RTE.	SECTION	COUNTY	TOTAL SHEETS	SHEET NO.
314	{30,66,108,109,110,111}PP-1	MADISON	6	4
ILLINOIS FED. AID PROJECT			CONTRACT NO. 76P86	

CLASS D PATCHING SCHEDULE								
LOCATION				CLASS D PATCHES, 13"				PAINT PAVEMENT MARKING - LINE 4"
DIRECTION	MILE STATION	LENGTH	WIDTH	TY-I	TY-II	TY-III	TY-IV	FOOT
		FT	FT	SQ YDS	SQ YDS	SQ YDS	SQ YDS	
NB	1.42	6	6	4				12
NB	1.52	6	6	4				12
NB	4.23	10	12		13			20
NB	4.36	6	12		8			12
NB	4.50	6	12		8			12
NB	4.66	4	4	2				8
NB	4.69	4	4	2				8
NB	4.71	4	4	2				8
NB	4.72	4	4	2				8
SB	4.73	12	12			16		24
NB	4.76	4	4	2				8
NB	4.78	20	6		13			40
NB	5.40	6	6	4				12
NB	5.91	19.5	12				26	39
NB	6.00	20	12				27	40
NB	6.01	10	12		13			20
NB	6.05	20	6		13			40
SB	6.09	6	12		8			12
NB	6.12	10	6		7			20
NB	6.13	10	12		13			20
SB	6.63	4	12		5			8
NB	7.19	4	12		5			8
NB	7.35	4	4	2				8
NB	7.59	6	12		8			12
SB	7.92	4	12		5			8
SB	8.06	4	12		5			8
NB	8.06	4	12		5			8
NB	8.99	6	12		8			12
NB	9.03	20	6		13			40
NB	9.39	4	12		5			8
SB	10.17	6	12		8			12
SB	10.30	4	12		5			8
SB	10.56	6	6	4				12
NB	10.58	20	12				27	40
NB	10.63	50	12				67	100
SB	10.68	6	6	4				12
NB	10.80	6	6	4				12
SB	10.86	100	12				133	200
SB	11.39	6	6	4				12
NB	11.58	6	12		8			12
SB	11.60	6	6	4				12
NB	11.87	6	6	4				12
NB	12.64	6	6	4				12
SB	12.67	4	12		5			8
NB	12.69	6	12		8			12
SB	12.69	6	12		8			12
SB	12.72	6	6	4				12
SB	12.83	4	12		5			8
NB	13.02	10	12		13			20
NB	13.28	12	12			16		24
NB	13.37	5	12		7			10
NB	13.39	75	12				100	150
NB	14.94	6	12		8			12
SB	14.94	6	12		8			12
NB	15.19	6	6	4				12
NB	15.55	6	12		8			12
SUB TOTAL				59	251	32	379	1255
PROJECTED FAILURES 20%				5	50	6	76	251
ROUNDED TOTAL				64	301	38	455	1506

CLASS B PATCHING SCHEDULE									
LOCATION				CLASS B PATCHES, 13"	SAW CUTS	DOWEL BARS 1 1/2"	TIE BARS 3/4"	WELDED WIRE REINFORCEMENT	PAINT PAVEMENT MARKING - LINE 4"
DIRECTION	MILE STATION	LENGTH	WIDTH	TY-IV	FT	EACH	EACH	SQ YDS	FOOT
		FT	FT	SQ YDS					
SB	5.91	200	19.5	433	259	35	67	433	400
SUB TOTAL				433	259	35	67	433	400
PROJECTED FAILURES 20%				87	52	7	13	87	80
ROUNDED TOTAL				520	310	42	80	520	480

M.P. 0.0 = CENTERLINE BLUE SPRUCE LANE

MODEL: Default
 FILE NAME: \\p01\share\unim\by.com\p01\DOT\Documents\DOT - Office\Bldg1 - 8\Projects\UDP\898\CAD\Drawings\UDP\898\Bldg1\Schedule.dgn

USER NAME = lewiska	DESIGNED -	REVISED -
PLOT SCALE = 100.3104' / in.	DRAWN -	REVISED -
PLOT DATE = 3/3/2022	CHECKED -	REVISED -
	DATE -	REVISED -

STATE OF ILLINOIS
DEPARTMENT OF TRANSPORTATION

SCHEDULES			
SCALE:	SHEET	OF	SHEETS
STA.	TO STA.		

F.A.P. RTE.	SECTION	COUNTY	TOTAL SHEETS	SHEET NO.
314	(30.66,108,109,110,111)PP-1	MADISON	6	5
CONTRACT NO. 76P86			ILLINOIS FED. AID PROJECT	

