

STATE OF ILLINOIS
DEPARTMENT OF TRANSPORTATION
DIVISION OF HIGHWAYS

**PROPOSED
HIGHWAY PLANS**

FAS ROUTE 212 (CH 9(JOY ROAD))
SECTION 19-00117-03-PV
PROJECT G4X4(555)
FULL-DEPTH RECLAMATION
MERCER COUNTY

C-94-079-20

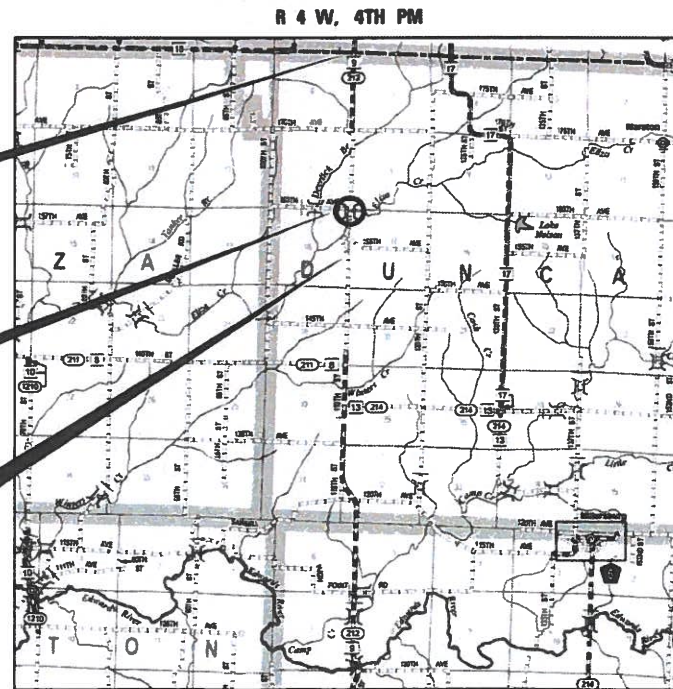
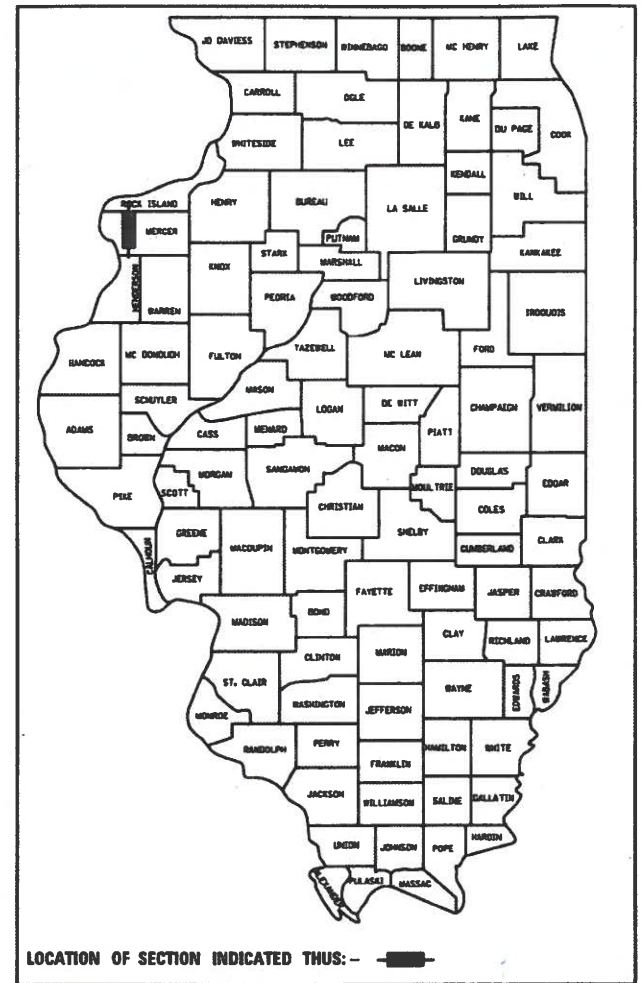
F.A.S. RTE.	SECTION	COUNTY	TOTAL SHEETS	SHEET NO.
212	19-00117-03-PV	MERCER	16	1
		ILLINOIS	CONTRACT NO. 89790	

INDEX OF SHEETS

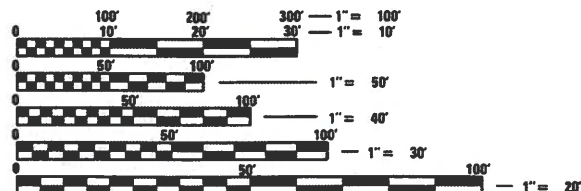
- 1 COVER SHEET
- 2 GENERAL NOTES & SUMMARY OF QUANTITIES
- 3 TYPICAL SECTION
- 4 SUPERELEVATION TABLE
- 5 SCHEDULES OF QUANTITIES
- 6-15 PLAN & PROFILES
- 16 TRAFFIC CONTROL PLAN

LIST OF HIGHWAY STANDARDS

630001-12	STEEL PLATE BEAM GUARDRAIL
630301-09	SHOULDER WIDENING FOR TYPE 1 (SPECIAL) GUARDRAIL TERMINALS
631031-17	TRAFFIC BARRIER TERMINAL, TYPE 6
701201-05	LANE CLOSURE, 2L, 2W, DAY ONLY, FOR SPEEDS ≥ 45 MPH
701306-04	LANE CLOSURE, 2L, 2W, SLOW MOVING OPERATIONS DAY ONLY, FOR SPEEDS ≥ 45 MPH
701901-08	TRAFFIC CONTROL DEVICES
780001-05	TYPICAL PAVEMENT MARKINGS
782006-01	GUARDRAIL AND BARRIER WALL REFLECTOR MOUNTING DETAILS
B.L.R. 21-9	TYPICAL APPLICATION OF TRAFFIC CONTROL DEVICES FOR CONSTRUCTION ON RURAL LOCAL HIGHWAYS
B.L.R. 22-7	TYPICAL APPLICATION OF TRAFFIC CONTROL DEVICES FOR CONSTRUCTION ON RURAL LOCAL HIGHWAYS (TWO-LANE TWO-WAY RURAL TRAFFIC) (ROAD CLOSED TO THRU TRAFFIC)



N
T 15 N
LOCATION MAP NOT TO SCALE



FULL SIZE PLANS HAVE BEEN PREPARED USING STANDARD ENGINEERING SCALES. REDUCED SIZED PLANS WILL NOT CONFORM TO STANDARD SCALES. IN MAKING MEASUREMENTS ON REDUCED PLANS, THE ABOVE SCALES MAY BE USED.

J.U.L.I.E.
JOINT UTILITY LOCATION INFORMATION FOR EXCAVATION
1-800-892-0123
OR 811

GROSS LENGTH = 14,400.00 FT. = 2.727 MILES
NET LENGTH = 14,331.00 FT. = 2.714 MILES

PROJECT MANAGER: SHANE LARSON, P.E.
PROJECT ENGINEER: LUKE ZELLER, P.E.
CATALOG 036057-00
CONTRACT NO. 89790

Hutchison Engineering, Inc.
Jacksonville - Peoria
Quad Cities - Shorewood
Since 1945

SEANE LARSON
REGISTERED PROFESSIONAL ENGINEER
STATE OF ILLINOIS
EXPIRES: 11/30/23
W. S. L.
SIGNATURE
ENGINEER'S SEAL

FUNCTIONAL CLASSIFICATION
RURAL MAJOR COLLECTOR
2015 ADT = 250
DESIGN SPEED = 40 MPH
PV = 88% SU = 7% MU = 5%

APPROVED JANUARY 12 2022
Chris Walsh
LOCAL AGENCY OFFICIAL

PASSED 02-08 2022
[Signature]
DISTRICT FOUR ENGINEER OF LOCAL ROADS & STREETS

Releasing For Bid Based on Limited Review February 9 2022
[Signature]
REGION THREE ENGINEER
STATE OF ILLINOIS
DEPARTMENT OF TRANSPORTATION

**PRINTED BY THE AUTHORITY
OF THE STATE OF ILLINOIS**

GENERAL NOTES

ALL REFERENCES TO THE "DEPARTMENT" OR "ENGINEER" IN THE IDOT STANDARD SPECIFICATIONS SHALL ALSO INCLUDE THE MERCER COUNTY ENGINEER.

THE SURFACE PROFILE MILLING QUANTITY AND LOCATIONS WILL BE AT THE DISCRETION OF THE ENGINEER.

PROPERTY OWNER ACCESS REQUIREMENT

ACCESS MUST BE MAINTAINED TO ALL EXISTING PROPERTIES DURING CONSTRUCTION PER ARTICLE 107.09 UNLESS ARRANGEMENTS ARE MADE IN WRITING BY THE CONTRACTOR WITH THE PROPERTY OWNERS WITH A COPY TO THE ENGINEER FOR SHORT-TERM CLOSURES.

ENVIRONMENTAL REVIEWS

PRIOR TO THE USE OF ANY PROPOSED BORROW AREAS, USE AREAS (TEMPORARY ACCESS ROADS, DETOURS, RUN-AROUNDS, ETC.) AND/OR WASTE AREAS, THE CONTRACTOR SHALL FILE THE REQUIRED ENVIRONMENTAL RESOURCE REQUEST SURVEYS ACCORDING TO SECTION 107.22 OF THE STANDARD SPECIFICATIONS. THESE SURVEYS ARE REQUIRED IN ORDER FOR THE DEPARTMENT TO CONDUCT CULTURAL AND BIOLOGICAL RESOURCE SURVEYS FOR THE PROPOSED SITE.

THE REQUIRED ENVIRONMENTAL RESOURCE DOCUMENTATION SHALL INCLUDE THE FOLLOWING:

- BDE FORM 2289 (CULTURAL AND NATURAL RESOURCES REVIEW OF BORROW AREAS)
- BDE FORM 2290 (WASTE/USE AREA REVIEW)
- A LOCATION MAP SHOWING THE SIZE LIMITS AND LOCATION OF THE USE AREA
- COLOR PHOTOGRAPHS DEPICTING THE USE AREA
- BORROW AREA ENTRY AGREEMENT FORM - D4 P10101

PRIOR TO ANY WASTE MATERIALS BEING REMOVED FROM THE CONSTRUCTION SITE THE REQUIRED ENVIRONMENTAL RESOURCE SURVEYS SHALL BE OBTAINED AND FILED BY THE CONTRACTOR. EXCESS WASTE PRODUCTS REMOVED FROM THE CONSTRUCTION SITE SHALL BE DISPOSED OF AS REQUIRED IN SECTION 202.03 OF THE STANDARD SPECIFICATIONS.

ANY PROTRUDING METAL BARS SHALL BE REMOVED PRIOR TO THE DISPOSAL OF BROKEN CONCRETE AT APPROVED DISPOSAL SITES.

PLEASE NOTE THAT A MINIMUM OF FOUR WEEKS SHALL BE ALLOWED FOR THE DISTRICT TO OBTAIN THE REQUIRED ENVIRONMENTAL CLEARANCES AND SIX WEEKS FOR THE REQUIRED BORROW SITE ENVIRONMENTAL CLEARANCES.

SUMMARY OF QUANTITIES					CONSTRUCTION CODE	
SPECIALTY ITEM AND / OR SPECIAL PROVISION	CODE NO.	DESCRIPTION	UNIT	TOTAL QUANTITY	80% FEDERAL	20% LOCAL
					ROADWAY	
					0005	
					RURAL	
PS, SI	30200550	PROCESSING MODIFIED SOIL 10"	SQ YD	38230		38230
PS, SI	30201700	PORTLAND CEMENT	TON	1470		1470
PS	35101400	AGGREGATE BASE COURSE, TYPE B	TON	1500		1500
PS	40200800	AGGREGATE SURFACE COURSE, TYPE B	TON	100		100
PS	48102100	AGGREGATE WEDGE SHOULDER, TYPE B	TON	375		375
	60100060	CONCRETE HEADWALLS FOR PIPE DRAINS	EACH	10		10
	60108100	PIPE UNDERDRAINS, 4" (SPECIAL)	FOOT	50		50
	60108501	PIPE UNDERDRAINS, TYPE 3	FOOT	6570		6570
PS, SI	63100085	TRAFFIC BARRIER TERMINAL, TYPE 6	EACH	4		4
	63200310	GUARDRAIL REMOVAL	FOOT	320		320
	67100100	MOBILIZATION	L SUM	1		1
SI	72000100	SIGN PANEL- TYPE 1	SQ FT	56		56
SI	72501000	TERMINAL MARKER - DIRECT APPLIED	EACH	4		4
SI	72900200	METAL POST -TYPE B	FOOT	150		150
SI	78001120	PAINT PAVEMENT MARKING - LINE 5"	FOOT	158416		158416
SI	78200005	GUARDRAIL REFLECTORS, TYPE A	EACH	16		16
LR, SI	LR403300	SURFACE PROFILE MILLING	SQ YD	38230		38230
LR, PS, RC	LR403400	BITUMINOUS MATERIALS (COVER AND SEAL COATS)	TON	145		145
PS, RC	LR403500	COVER COAT AGGREGATE	TON	968		968
PS, RC	LR403600	SEAL COAT AGGREGATE	TON	1617		1617
SI	LR631020	TRAFFIC BARRIER TERMINAL, TYPE 1	EACH	4		4
PS	X0327584	GRADING AND SHAPING SHOULDERS	FOOT	4350		4350
LR, PS	X7010216	TRAFFIC CONTROL AND PROTECTION, (SPECIAL)	L SUM	1		1
PS, RC	Z0013798	CONSTRUCTION LAYOUT	L SUM	1		1
PS	X0100002	GRADING AND SHAPING (SPECIAL)	SQ YD	408		408
PS	XX009523	UNSUITABLE MATERIAL REMOVAL AND REPLACEMENT	CU YD	40		40

LR = LOCAL ROADS PS = PROJECT SPECIFIC RC = RECURRING SI = SPECIALTY ITEM

MODEL: Default FILE NAME: V:\4599 - CH 9 FDR - Phase II (Mercer CollNorth Section)\CADD\CADD - Sheets\489790-sh-2-quantity & 500.dgn



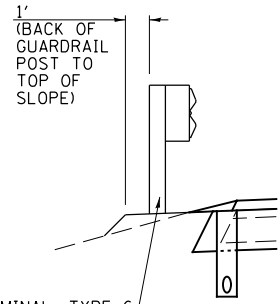
USER NAME = 5Hughes	DESIGNED - LDZ	REVISED -
	DRAWN - SRH	REVISED -
PLOT SCALE = 2,000' / 1"	CHECKED - WSL	REVISED -
PLOT DATE = 2/9/2022	DATE - 9-27-21	REVISED -

MERCER COUNTY HIGHWAY DEPARTMENT

COUNTY HIGHWAY 9 GENERAL NOTES & SUMMARY OF QUANTITIES

SCALE: N/A SHEET 1 OF 1 SHEETS STA. N/A TO STA. N/A

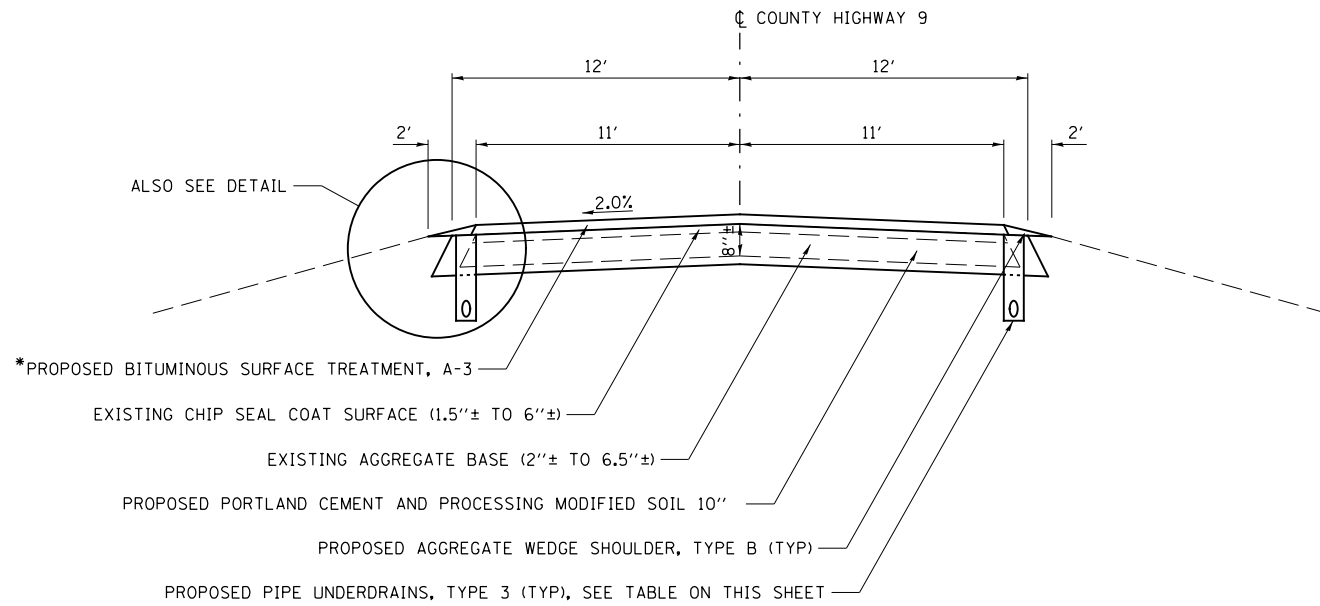
F.A.S RTE.	SECTION	COUNTY	TOTAL SHEETS	SHEET NO.
212	19-00117-03-PV	MERCER	16	2
CONTRACT NO. 89790				
ILLINOIS FED. AID PROJECT				



TRAFFIC BARRIER TERMINAL, TYPE 6
TRAFFIC BARRIER TERMINAL, TYPE 1
(SEE PLAN & PROFILE)

DETAIL

STA 885+24.4 TO STA 885+86.9 (LT & RT)
STA 886+53.9 TO STA 887+16.4 (LT & RT)



PIPE UNDERDRAINS, TYPE 3			
STATION	TO	STATION	SIDE
887+25	TO	895+50	LT
887+25	TO	887+25	LT
899+45	TO	916+40	LT
899+45	TO	899+45	LT
916+40	TO	916+40	LT
916+40	TO	916+40	RT
921+00	TO	931+00	LT
931+00	TO	931+00	LT
921+00	TO	931+00	RT
931+00	TO	931+00	RT
963+15	TO	966+70	LT
963+15	TO	963+15	LT
963+15	TO	966+70	RT
963+15	TO	963+15	RT

COUNTY HIGHWAY 9 TYPICAL SECTION

STA 850+46.25 TO STA 994+46.25

*PROPOSED BITUMINOUS SURFACE TREATMENT, A-3 SHALL CONSIST OF THE FOLLOWING PAY ITEMS:
BITUMINOUS MATERIALS (COVER AND SEAL COATS) - THE BITUMINOUS MATERIALS (COVER AND SEAL COATS) SHALL BE HFRS-2 APPLIED AT A RATE OF 0.3 GAL/SY.
COVER COAT AGGREGATE - THE COVER COAT AND SEAL COAT AGGREGATES SHALL BE 3/8" CLASS A - CA 16 (CRUSHED) APPLIED AT A RATE OF 25 LBS/SY.
SEAL COAT AGGREGATE

NOTES

- EXISTING CROSS SLOPE IS VARIABLE.
- EXISTING ROADWAY SURFACE IS 24' ±.
- PORTLAND CEMENT PERCENTAGE IS ESTIMATED TO BE 7% BY WEIGHT (10" DEEP AND 24' WIDE).
- FINAL A-3 SURFACE SHALL BE 22' WIDE.
- AGGREGATE SURFACE COURSE, TYPE B HAS BEEN INCLUDED FOR USE AT ENTRANCES AND AGGREGATE SIDE ROADS TO TAPER ANY ELEVATION DIFFERENCE BETWEEN THE EXISTING ENTRANCE/SIDE ROAD ELEVATION AND PROPOSED FINISHED ROADWAY ELEVATION, AS NECESSARY.
- THE EMBANKMENT REQUIRED FOR GUARDRAIL FLARES WILL BE CONSTRUCTED BY MERCER COUNTY.
- SIDE ROADS WITH EXISTING CHIP SEAL SURFACES (1 LOCATION (170TH AVE)) WILL BE REQUIRED TO RECEIVE A BITUMINOUS SURFACE TREATMENT, A-3 TO THE END OF RADIUS RETURNS AFTER GRADING HAS BEEN COMPLETED.
- A BITUMINOUS SURFACE TREATMENT, A-1 WILL BE PLACED FROM STA 513+45 TO STA 850+46.25.

MODEL: Default; FILE: MercCo; 19-00117-03-PV - CH 9 FDR - Phase II; I:\Mercer Co\North Section\CADD\CADD Sheets\88790-sh-3-typical.dgn

Hutchinson Engineering, Inc.
Jacksonville - Peoria - Quad Cities - Shorewood
Since 1945

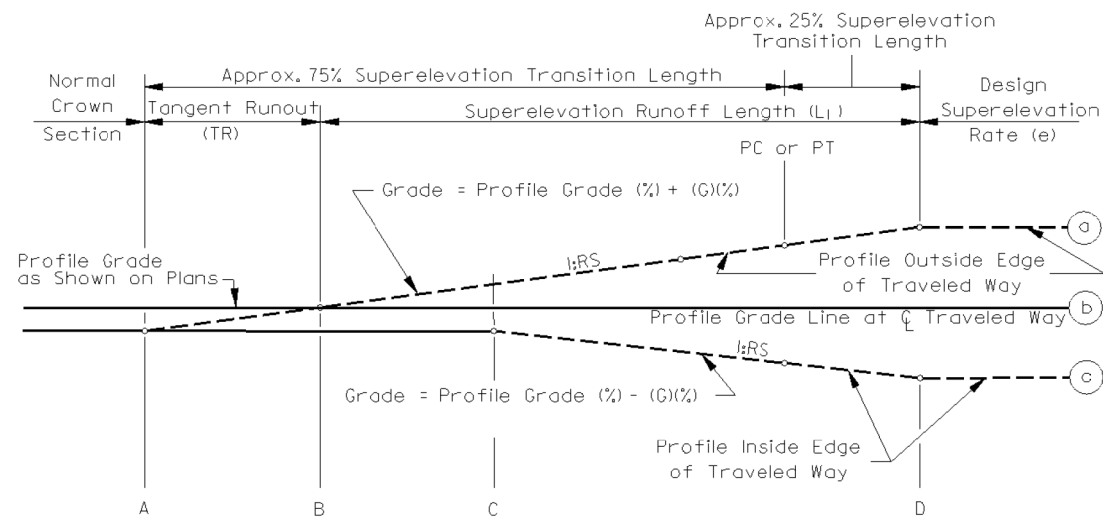
USER NAME = Shughes	DESIGNED - LDZ	REVISED -
PLOT SCALE = 6,000' / in.	DRAWN - SRH	REVISED -
PLOT DATE = 1/6/2022	CHECKED - WSL	REVISED -
	DATE - 9-27-21	REVISED -

**MERCER COUNTY
HIGHWAY DEPARTMENT**

**COUNTY HIGHWAY 9
TYPICAL SECTIONS**

SCALE: N/A SHEET 1 OF 1 SHEETS STA. N/A TO STA. N/A

F.A.S RTE.	SECTION	COUNTY	TOTAL SHEETS	SHEET NO.
212	19-00117-03-PV	MERCER	16	3
CONTRACT NO. 89790				
ILLINOIS FED. AID PROJECT				



Note: Round all edge breakpoints in field.

NOTE: REFER TO THE TABLE FOR HIGH AND LOW SIDE OF THE SUPERELEVATION

PROPOSED SUPERELEVATION TABLE
CH 9 - CURVE 1

SECTIONS	CHAIN	STA	LEFT		PROFILE GRADE	RIGHT	
			EOP Elev.	e		EOP Elev.	e
A	CH 9	850+60.17	701.49	-2.00%	701.71	701.49	-2.00%
B	CH 9	850+98.25	700.78	-2.00%	701.00	701.00	0.00%
C	CH 9	851+36.33	700.06	-2.00%	700.28	700.50	2.00%
PC	CH 9	851+64.18					
D	CH 9	851+97.25	698.34	-5.20%	698.91	699.48	5.20%
D	CH 9	857+65.35	676.01	-5.20%	676.58	677.15	5.20%
C	CH 9	858+25.66	675.18	-2.00%	675.40	675.62	2.00%
PT	CH 9	858+33.35					
B	CH 9	858+63.35	674.54	-2.00%	674.76	674.76	0.00%
A	CH 9	859+01.35	673.90	-2.00%	674.12	673.90	-2.00%

PROPOSED SUPERELEVATION TABLE
CH 9 - CURVE 2 AND CURVE 3

SECTIONS	CHAIN	STA	LEFT		PROFILE GRADE	RIGHT	
			EOP Elev.	e		EOP Elev.	e
A	CH 9	859+25.45	673.49	-2.00%	673.71	673.49	-2.00%
B	CH 9	859+63.45	673.10	0.00%	673.10	672.88	-2.00%
C	CH 9	860+01.45	672.85	2.00%	672.63	672.41	-2.00%
PC	CH 9	860+10.45					
D	CH 9	860+95.45	673.07	7.00%	672.30	671.53	-7.00%
D-1	CH 9	866+23.57	659.87	7.00%	659.10	658.33	-7.00%
D-2	CH 9	866+53.97	659.13	5.40%	658.54	657.95	-5.40%
PT	CH 9	868+58.16					
C	CH 9	868+88.47	661.30	2.00%	661.08	660.86	-2.00%
B	CH 9	869+26.25	662.63	0.00%	662.63	662.41	-2.00%
A	CH 9	869+64.03	664.09	-2.00%	664.31	664.09	-2.00%

PROPOSED SUPERELEVATION TABLE
CH 9 - CURVE 4

SECTIONS	CHAIN	STA	LEFT		PROFILE GRADE	RIGHT	
			EOP Elev.	e		EOP Elev.	e
A	CH 9	871+34.17	671.13	-2.00%	671.35	671.13	-2.00%
B	CH 9	871+72.25	671.96	-2.00%	672.18	672.18	0.00%
C	CH 9	872+10.33	672.37	-2.00%	672.59	672.81	2.00%
PC	CH 9	872+38.74					
D	CH 9	872+71.25	671.79	-5.20%	672.36	672.93	5.20%
D	CH 9	877+98.25	657.59	-5.20%	658.16	658.73	5.20%
PT	CH 9	878+31.08					
C	CH 9	878+59.17	657.80	-2.00%	658.02	658.24	2.00%
B	CH 9	878+97.25	657.72	-2.00%	657.94	657.94	0.00%
A	CH 9	879+35.33	657.64	-2.00%	657.86	657.64	-2.00%

PROPOSED SUPERELEVATION TABLE
CH 9 - CURVE 11

SECTIONS	CHAIN	STA	LEFT		PROFILE GRADE	RIGHT	
			EOP Elev.	e		EOP Elev.	e
A	CH 9	920+65.25	726.01	-2.00%	726.23	726.01	-2.00%
B	CH 9	921+03.25	726.09	0.00%	726.09	725.87	-2.00%
C	CH 9	921+41.25	725.28	2.00%	725.06	724.84	-2.00%
PC	CH 9	921+53.92					
D	CH 9	921+79.25	723.58	4.00%	723.14	722.70	-4.00%
D	CH 9	924+09.25	703.27	4.00%	702.83	702.39	-4.00%
PT	CH 9	924+34.26					
C	CH 9	924+47.25	699.61	2.00%	699.39	699.17	-2.00%
B	CH 9	924+85.25	695.91	0.00%	695.91	695.69	-2.00%
A	CH 9	925+23.25	692.30	-2.00%	692.52	692.30	-2.00%

PROPOSED SUPERELEVATION TABLE
CH 9 - CURVE 12

SECTIONS	CHAIN	STA	LEFT		PROFILE GRADE	RIGHT	
			EOP Elev.	e		EOP Elev.	e
A	CH 9	927+86.25	678.71	-2.00%	678.93	678.71	-2.00%
B	CH 9	928+24.33	678.18	-2.00%	678.40	678.40	0.00%
C	CH 9	928+62.40	677.92	-2.00%	678.14	678.36	2.00%
PC	CH 9	928+64.92					
D	CH 9	928+85.25	677.64	-3.20%	677.99	678.34	3.20%
D	CH 9	934+78.25	676.67	-3.20%	677.02	677.37	3.20%
PT	CH 9	934+98.13					
C	CH 9	935+01.13	676.89	-2.00%	677.11	677.33	2.00%
B	CH 9	935+39.25	677.07	-2.00%	677.29	677.29	0.00%
A	CH 9	935+77.38	677.27	-2.00%	677.49	677.27	-2.00%

PROPOSED SUPERELEVATION TABLE
CH 9 - CURVE 13

SECTIONS	CHAIN	STA	LEFT		PROFILE GRADE	RIGHT	
			EOP Elev.	e		EOP Elev.	e
A	CH 9	937+34.25	678.41	-2.00%	678.63	678.41	-2.00%
B	CH 9	937+72.25	678.97	0.00%	678.97	678.75	-2.00%
PC	CH 9	937+97.44					
C	CH 9	938+10.25	679.56	2.00%	679.34	679.12	-2.00%
D	CH 9	938+10.25	679.56	2.00%	679.34	679.12	-2.00%
D	CH 9	942+98.25	699.33	2.00%	699.11	698.89	-2.00%
C	CH 9	942+98.25	699.33	2.00%	699.11	698.89	-2.00%
PT	CH 9	943+10.56					
B	CH 9	943+36.25	702.06	0.00%	702.06	701.84	-2.00%
A	CH 9	943+74.25	704.63	-2.00%	704.85	704.63	-2.00%

MODEL Default - CH 9 - Phase II - Mercer County - Section CADD - Sheets D88790-511-4 - Super-elevation.dgn

Hutchinson Engineering, Inc.
Jacksonville - Peoria - Quad Cities - Shorewood
Since 1945

USER NAME = SHUGHES	DESIGNED - LDZ	REVISED -
	DRAWN - SRH	REVISED -
PLOT SCALE = 2,000' / In.	CHECKED - WSL	REVISED -
PLOT DATE = 1/6/2022	DATE - 9-27-21	REVISED -

**MERCER COUNTY
HIGHWAY DEPARTMENT**

**COUNTY HIGHWAY 9
SUPERELEVATION TABLE**

SCALE: N/A SHEET 1 OF 1 SHEETS STA. N/A TO STA. N/A

F.A.S. RTE.	SECTION	COUNTY	TOTAL SHEETS	SHEET NO.
212	19-00117-03-PV	MERCER	16	4
CONTRACT NO. 89790				
ILLINOIS FED. AID PROJECT				

PAINT PAVEMENT MARKING - LINE 5"									
STATION	TO	STATION	5"				FOOT		
			SKIP-DASH	SOLID	SKIP-DASH	SOLID			
			YELLOW		YELLOW			YELLOW	WHITE
			PASSING / NO PASSING CENTERLINE (NORTHBOUND)		PASSING / NO PASSING CENTERLINE (SOUTHBOUND)			PASSING CENTERLINE	EDGE LINE
850+46	TO	874+86		2440					
850+46	TO	855+26			120				
874+86	TO	878+72	96						
855+26	TO	878+72			2345				
878+72	TO	890+76				301			
890+76	TO	895+51			119				
890+76	TO	909+06		1830					
895+51	TO	901+51			600				
901+51	TO	907+26			144				
907+26	TO	926+96			1970				
909+06	TO	915+21	154						
915+21	TO	921+21		600					
921+21	TO	926+96	144						
926+96	TO	940+06				328			
940+06	TO	945+36			133				
940+06	TO	965+36		2530					
945+36	TO	971+41			2605				
965+36	TO	971+41	151						
971+41	TO	974+36				74			
974+36	TO	977+91			89				
974+36	TO	980+36		600					
977+91	TO	983+91			600				
980+36	TO	983+91	89						
983+91	TO	994+50				265			
850+46	TO	994+50					28808		
513+45	TO	850+46	1422	19700	1560	19120	2080		
SUB-TOTAL			2056	27700	2164	27240	3047	96210	
TOTAL								158416	
USE								158416	

GUARDRAIL REMOVAL				
STATION	TO	STATION	SIDE	LENGTH FOOT
885+24.4	TO	885+86.9	LT	80
885+24.4	TO	885+86.9	RT	80
886+53.9	TO	887+16.4	LT	80
886+53.9	TO	887+16.4	RT	80
TOTAL				320
USE				320

SHOULDERS				
LOCATION			AGGREGATE WEDGE SHOULDER, TYPE B	GRADING AND SHAPING SHOULDERS
STATION	TO	STATION	TON	FOOT
850+46.25	TO	994+46.25	375	4350
TOTAL			375	4350
USE			375	4350

PAVEMENT									
LOCATION			PROCESSING MODIFIED SOIL 10"	PORTLAND CEMENT	AGGREGATE BASE COURSE, TYPE B*	SURFACE PROFILE MILLING	BITUMINOUS MATERIALS (COVER AND SEAL COATS)	COVER COAT AGGREGATE	SEAL COAT AGGREGATE
STATION	TO	STATION	SQ YD	TON	TON	SQ YD	TON	TON	TON
850+46.25	TO	994+46.25	38230	1470	1500	38230	145	968	1617
TOTAL			38230	1470	1500	38230	145	968	1617
USE			38230	1470	1500	38230	145	968	1617

*APPLIES THROUGH SE CURVES.

GUARDRAIL							
STATION	TO	STATION	SIDE	TRAFFIC BARRIER TERMINAL, TYPE 1	TRAFFIC BARRIER TERMINAL, TYPE 6	GUARDRAIL REFLECTORS TYPE A	TERMINAL MARKER - DIRECT APPLIED
				EACH	EACH	EACH	EACH
885+24.4	TO	885+49.4	LT	1		2	1
885+24.4	TO	885+49.4	RT	1		2	1
885+49.4	TO	885+86.9	LT		1	2	
885+49.4	TO	885+86.9	RT		1	2	
886+53.9	TO	886+91.4	LT		1	2	
886+53.9	TO	886+91.4	RT		1	2	
886+91.4	TO	887+16.4	LT	1		2	1
886+91.4	TO	887+16.4	RT	1		2	1
TOTAL				4	4	16	4
USE				4	4	16	4

GRADING AND SHAPING (SPECIAL)	
LOCATION	AREA SQ YD
SIDERoads	408
TOTAL 408	
USE 408	

PIPE UNDERDRAINS						
LOCATION		60100060	60108100	60108501		
STATION	TO	STATION	SIDE	CONCRETE HEADWALLS FOR PIPE DRAINS	PIPE UNDERDRAINS 4" (SPECIAL)	PIPE UNDERDRAINS, TYPE 3
				EACH	FOOT	FOOT
887+25	TO	895+50	LT			825
887+25	TO	887+25	LT	1	5	
899+45	TO	916+40	LT			1695
899+45	TO	899+45	LT	1	5	
908+00	TO	916+40	RT			840
916+40	TO	916+40	LT	1	5	
916+40	TO	916+40	RT	1	5	
921+00	TO	931+00	LT			1000
931+00	TO	931+00	LT	1	5	
921+00	TO	931+00	RT			1000
931+00	TO	931+00	RT	1	5	
963+15	TO	966+70	LT			355
963+15	TO	963+15	LT	1	5	
963+15	TO	966+70	RT			355
963+15	TO	963+15	RT	1	5	
CONTINGENCY				2	10	500
TOTAL				10	50	6570
USE				10	50	6570

ENTRANCES & SIDEROADS				
LOCATION		AGGREGATE SURFACE COURSE, TYPE B		
STATION	TO	STATION	TON	
850+46.25	TO	994+46.25	67	
(22 ENTRANCES)				
155TH AVE				1.1
160TH AVE				1.2
TOTAL				69.0
USE				100

NO PASSING ZONE SIGN			
STATION	SIDE	SIGN PANEL (W14-3) TYPE 1	METAL POST TYPE B
		SQ FT	
850+46	LT	5.56	15
878+72	RT	5.56	15
890+76	LT	5.56	15
901+51	RT	5.56	15
915+21	LT	5.56	15
926+96	RT	5.56	15
940+06	LT	5.56	15
971+41	RT	5.56	15
974+36	LT	5.56	15
983+91	RT	5.56	15
TOTAL		56	150
USE		56	150

MODEL: D:\m\h\11... FILE: M:\E... CH 9... Phase II... 2/19/2022



USER NAME = SHughes	DESIGNED - LDZ	REVISED -
PLOT SCALE = 2,000' / in.	DRAWN - SRH	REVISED -
PLOT DATE = 2/19/2022	CHECKED - WSL	REVISED -
	DATE - 11-15-21	REVISED -

MERCER COUNTY HIGHWAY DEPARTMENT

COUNTY HIGHWAY 9 SCHEDULES OF QUANTITIES

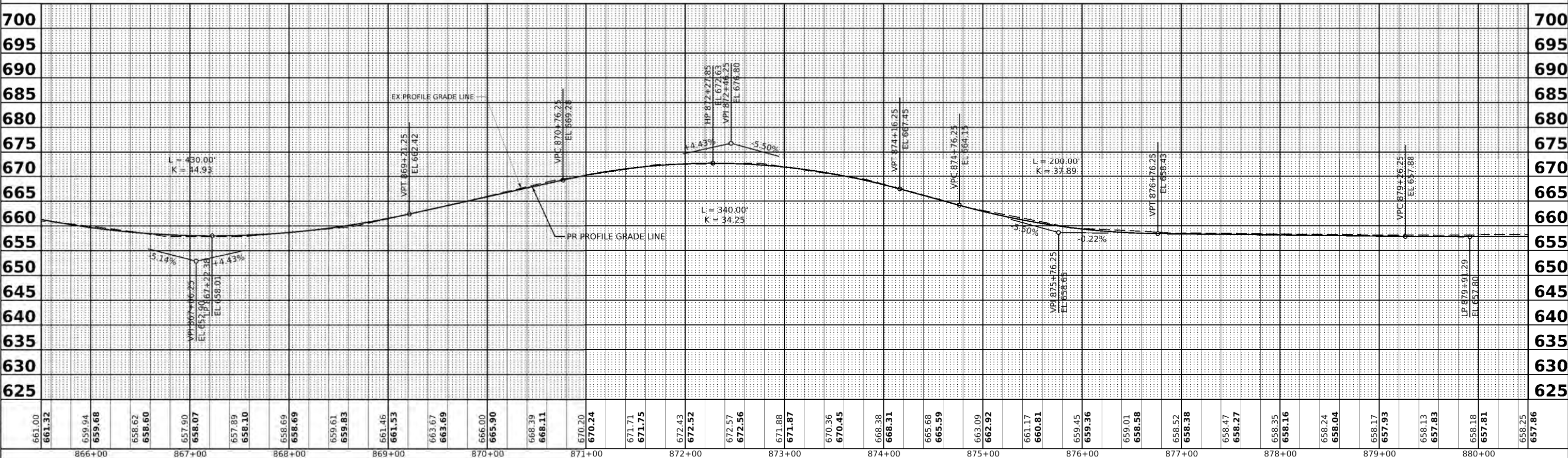
SCALE: N/A SHEET 1 OF 1 SHEETS STA. N/A TO STA. N/A

F.A.S RTE.	SECTION	COUNTY	TOTAL SHEETS	SHEET NO.
212	19-00117-03-PV	MERCER	16	5
CONTRACT NO. 89790				
ILLINOIS FED. AID PROJECT				

PLAN	SUBMITTED	DATE
	PLOTTED	
	ALIGNED CHECKED	
	GRADES CHECKED	
	CAAD FILE NAME	
	NO.	

PROFILE	SUBMITTED	DATE
	PLOTTED	
	GRADES CHECKED	
	STRUCTURE NOTATIONS CHECKED	
	NO.	

MODEL: EX_CH9 - CH 9 Plan - 1 Sheet
 FILE NAME: V:\0997 - CH 9 Plan - 1 Sheet - 11/16/2022.dwg



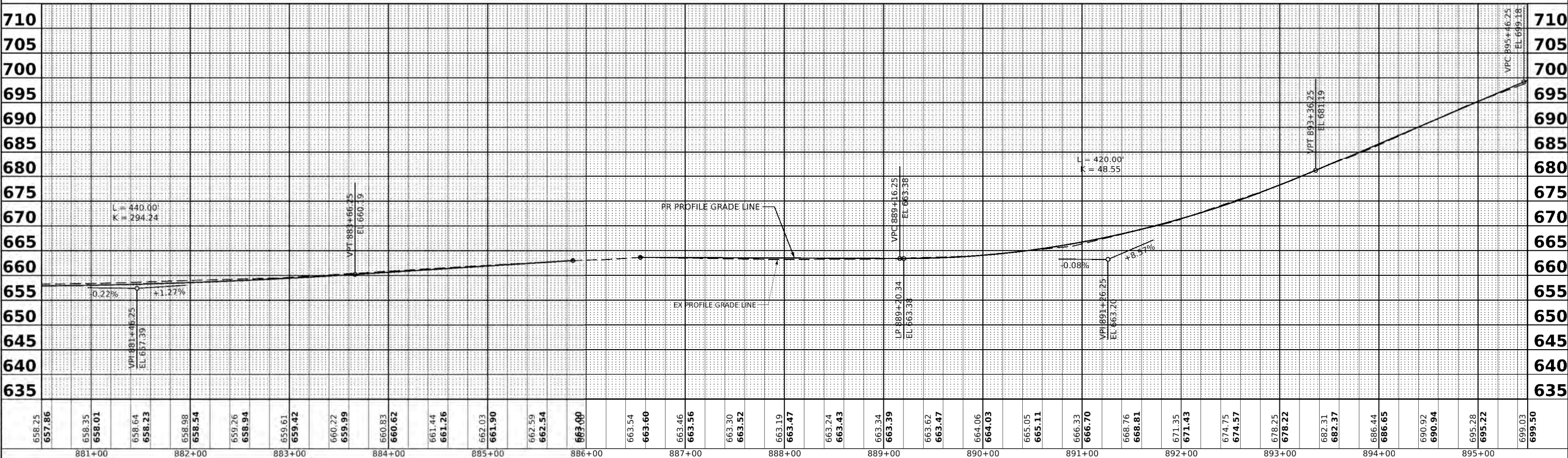
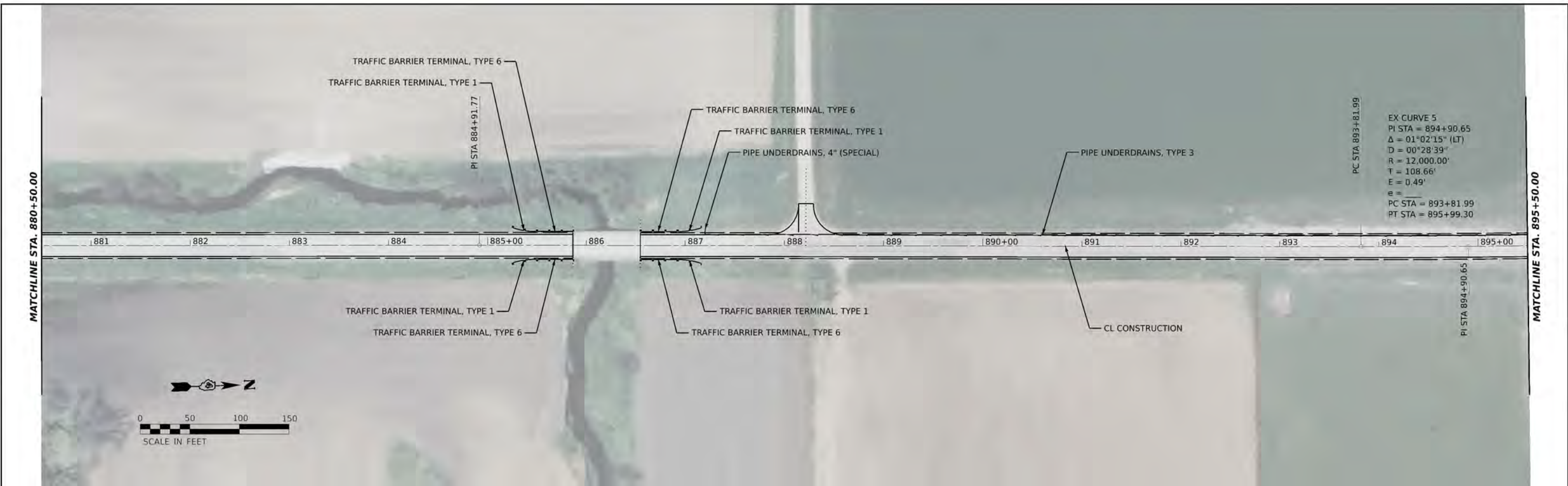
661.00	661.32	659.94	659.68	658.62	658.60	657.90	658.07	657.89	658.10	658.69	658.69	659.61	659.83	661.46	661.53	663.67	663.69	666.00	665.90	668.39	668.11	670.20	670.24	671.71	671.75	672.43	672.52	672.57	672.56	671.88	671.87	670.36	670.45	668.38	668.31	665.68	665.59	663.09	662.92	661.17	660.81	659.45	659.36	659.01	658.58	658.52	658.38	658.47	658.27	658.35	658.16	658.24	658.04	658.17	657.93	658.13	657.83	658.18	657.81	658.25	657.86
866+00	867+00	868+00	869+00	870+00	871+00	872+00	873+00	874+00	875+00	876+00	877+00	878+00	879+00	880+00																																															

	USER NAME = SHUGHES	DESIGNED - LDZ	REVISED -	MERCER COUNTY HIGHWAY DEPARTMENT	COUNTY HIGHWAY 9 PLAN & PROFILE	F.A.S. R.T.E. = 212	SECTION = 19-00117-03-PV	COUNTY = MERCER	TOTAL SHEETS = 16	SHEET NO. = 7	
	PLOT SCALE = 0.16666633' = 1"	CHECKED - WSL	REVISED -			SCALE: H=50 V=5	SHEET 2	OF 10 SHEETS	STA. 865+50	TO STA. 880+50	CONTRACT NO. 89790
	PLOT DATE = 1/6/2022	DATE = 10-19-21	REVISED -			ILLINOIS FED. AID PROJECT					

PLAN	SUBMITTED	DATE
	PLOTTED	
	ALIGNMENT CHECKED	
	GRADE CHECKED	
	ROAD FILE NAME	
	NO.	

PROFILE	SUBMITTED	DATE
	PLOTTED	
	GRADE CHECKED	
	STRUCTURE NOTE CHECKED	
	NO.	

I:\0111 - EA_C110 - CH 9 Plan & Profile.dwg
 FILE NAME: V10599 - CH 9 - Phase II Interim Construction - CADD Sheets\0111-09-Plan-Profile.dwg

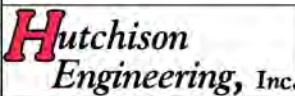
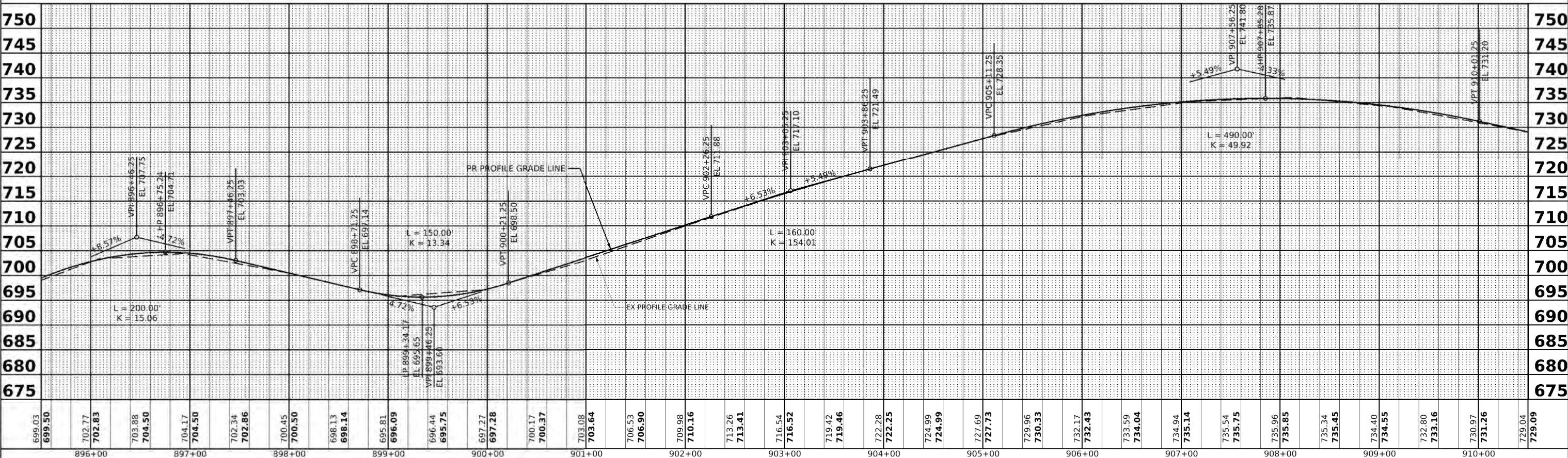
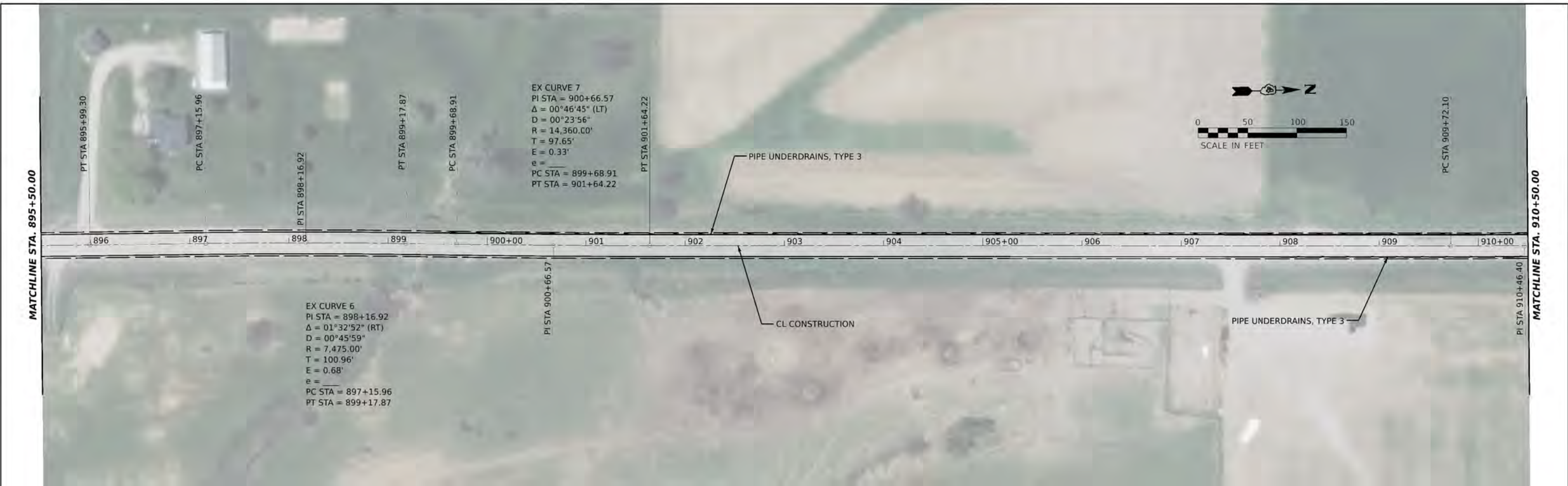


Hutchison Engineering, Inc.	USER NAME = S Hughes DESIGNED - LDZ DRAWN - SRH CHECKED - WSL DATE - 10-19-21	REVISED - REVISED - REVISED - REVISED -	MERCER COUNTY HIGHWAY DEPARTMENT	COUNTY HIGHWAY 9 PLAN & PROFILE	F.A.S. RTE. 212 SECTION 19-00117-03-PV COUNTY MERCER TOTAL SHEETS 16 SHEET NO. 8 CONTRACT NO. 89790 <small>ILLINOIS FED. AID PROJECT</small>
SCALE: H=50 V=5 SHEET 3 OF 10 SHEETS STA. 880+50 TO STA 895+50					

PLAN	SUBMITTED	DATE
	PLOTTED	
	ALIGNMENT CHECKED	
	GRADES CHECKED	
	CAAD FILE NAME	
	NO.	

PROFILE	SUBMITTED	DATE
	PLOTTED	
	GRADES CHECKED	
	STRUCTURE NOTATIONS CHECKED	
	NO.	

MODEL: EX_CH9 - CH 9 Plan - 3 (Sheet)
 FILE NAME: V:\0997 - CH 9 Plan - 3 (Sheet) - 11.mxd
 USER: LDZ
 DATE: 10/19/21



USER NAME	= Shughes
DESIGNED	- LDZ
DRAWN	- SRH
CHECKED	- WSL
DATE	- 10-19-21

REVISED	-
REVISED	-
REVISED	-
REVISED	-

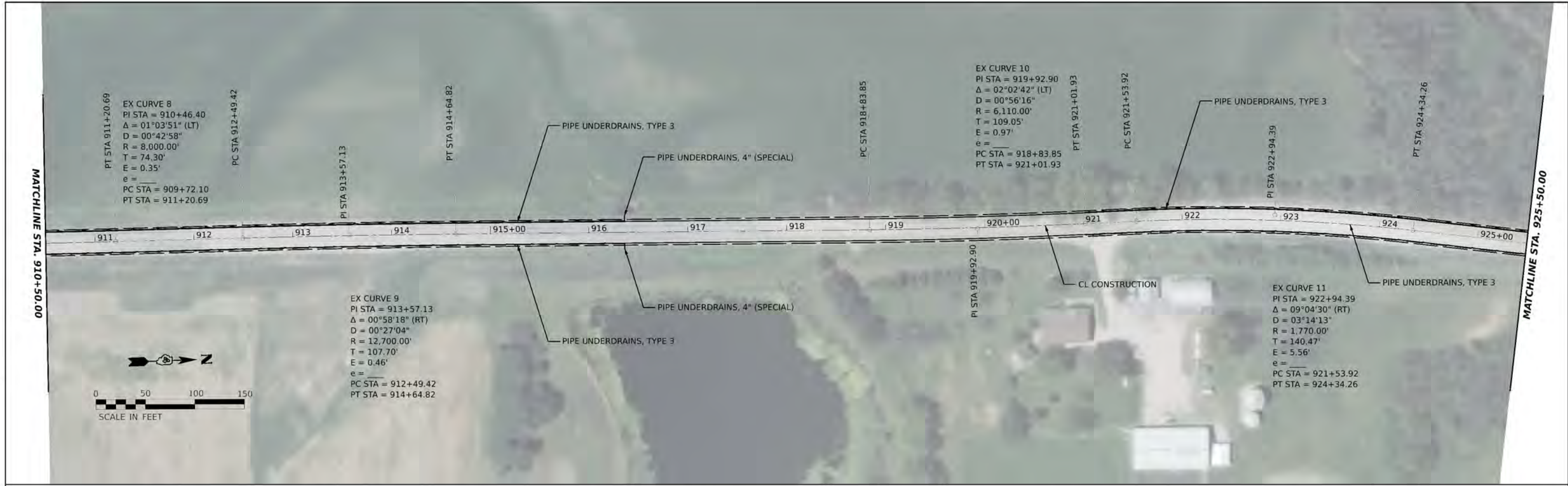
**MERCER COUNTY
HIGHWAY DEPARTMENT**

**COUNTY HIGHWAY 9
PLAN & PROFILE**

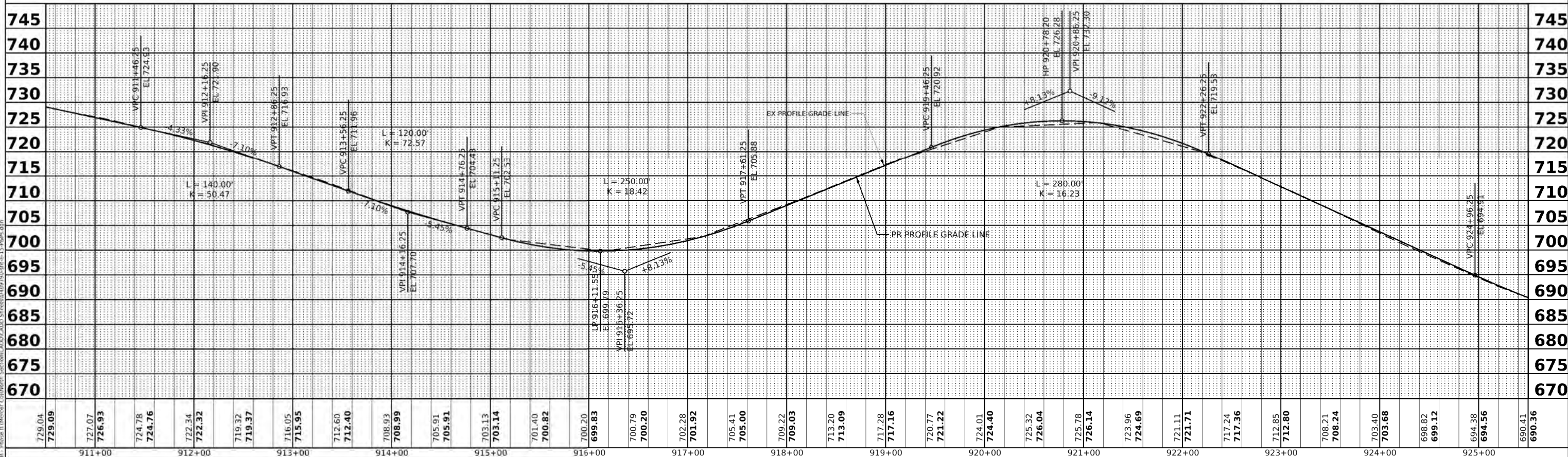
SCALE: H=50 V=5 SHEET 4 OF 10 SHEETS STA. 895+50 TO STA. 910+50

F.A.S. RTE.	SECTION	COUNTY	TOTAL SHEETS	SHEET NO.
212	19-00117-03-PV	MERCER	16	9
				CONTRACT NO. 89790
ILLINOIS FED. AID PROJECT				

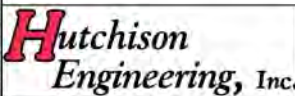
PLAN	SUBMITTED	DATE
	PLOTTED	
	ALIGNMENT CHECKED	
	GRADES CHECKED	
	CAAD FILE NAME	
	NO.	



PROFILE	SUBMITTED	DATE
	PLOTTED	
	GRADES CHECKED	
	STRUCTURE NOTATIONS CHECKED	
	NO.	



MODEL: EX_CH9 - CH 9 Plan & Profile
 FILE NAME: V:\0997 - CH 9 FOR - Merge B - Intersect - CollForm - Section\CAAD\CAAD Sheets\0997-03-13.mxd.dwg



USER NAME	= Shughes	DESIGNED	- LDZ	REVISED	-
PLOT SCALE	= 0.16666633' = 1"	DRAWN	- SRH	REVISED	-
PLOT DATE	= 1/7/2022	CHECKED	- WSL	REVISED	-
		DATE	- 10-19-21	REVISED	-

**MERCER COUNTY
HIGHWAY DEPARTMENT**

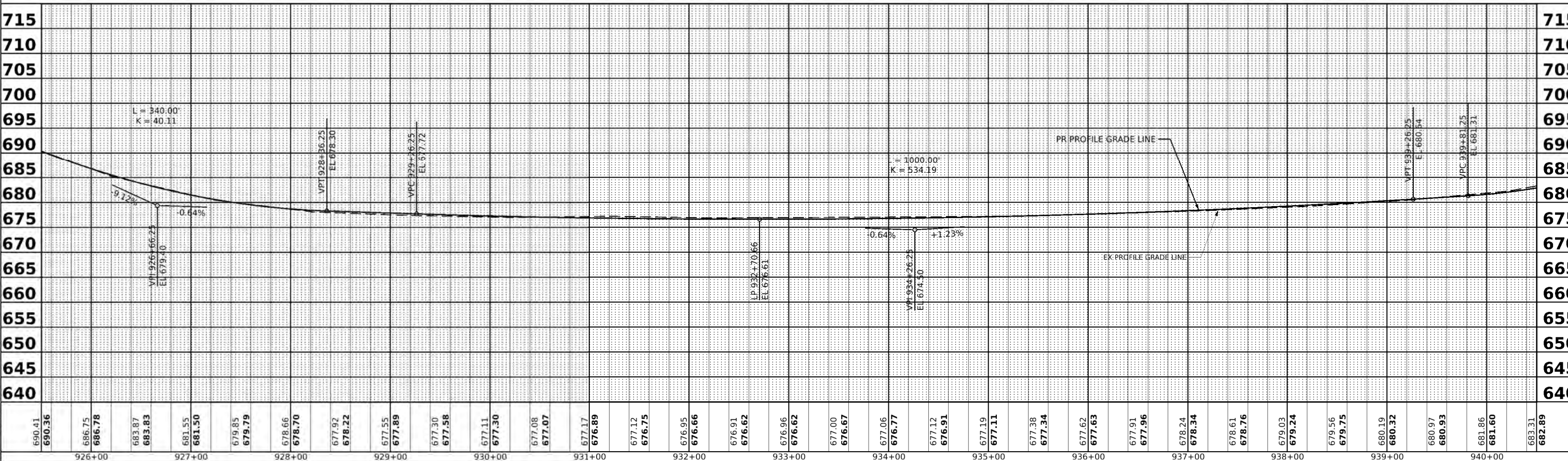
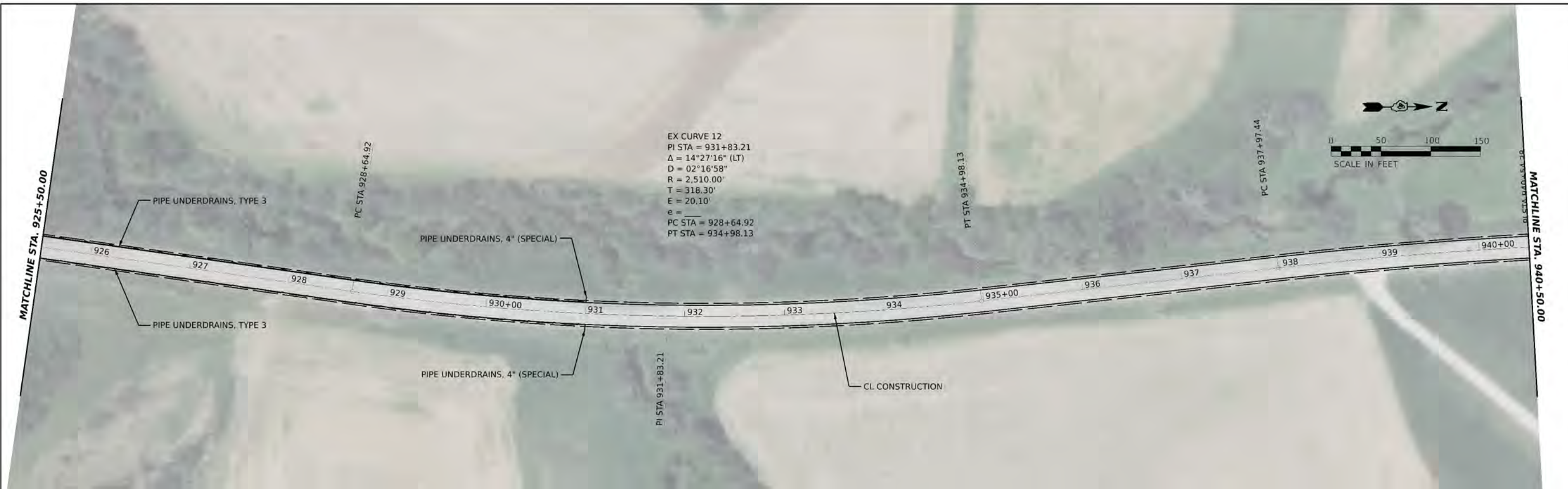
**COUNTY HIGHWAY 9
PLAN & PROFILE**

SCALE: H=50 V=5 SHEET 5 OF 10 SHEETS STA. 910+50 TO STA. 925+50

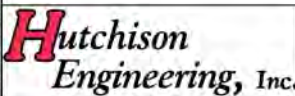
F.A.S. RTE.	SECTION	COUNTY	TOTAL SHEETS	SHEET NO.
212	19-00117-03-PV	MERCER	16	10
CONTRACT NO. 89790				
ILLINOIS FED. AID PROJECT				

PLAN	SUBMITTED	DATE
	PLOTTED	
	ALIGNMENT CHECKED	
	GRADES CHECKED	
	CAAD FILE NAME	
	NO.	

PROFILE	SUBMITTED	DATE
	PLOTTED	
	GRADES CHECKED	
	STRUCTURE NOTATIONS CHECKED	
	NO.	



MODEL: EX_CH9 - CH 9 Plan-3 (Sheet)
 FILE NAME: V190917 - CH 9 FOR - Merge 8 (Merge) - CollNorth - Section-CAAD-CADD Sheet-04.dwg 10/13/2021 10:13:58 am



USER NAME	= Shughes	DESIGNED	- LDZ	REVISED	-
DRAWN	- SRH	REVISION	-		
CHECKED	- WSL	REVISION	-		
DATE	- 10-19-21	REVISION	-		

**MERCER COUNTY
HIGHWAY DEPARTMENT**

**COUNTY HIGHWAY 9
PLAN & PROFILE**

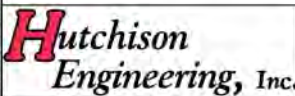
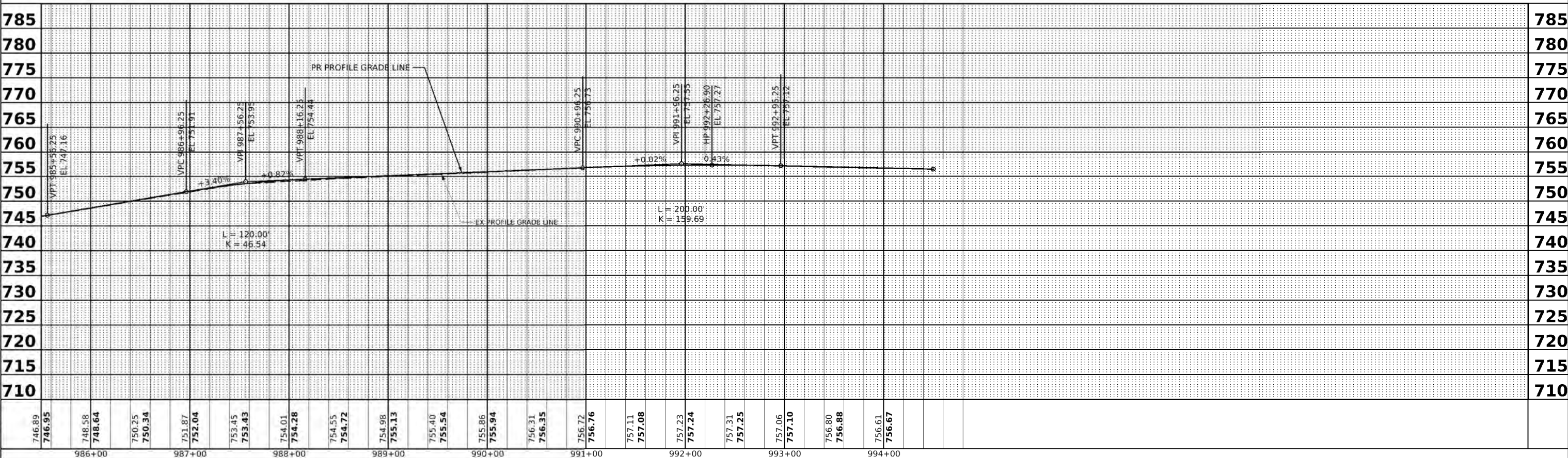
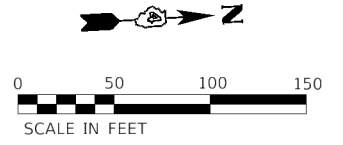
SCALE: H=50 V=5 SHEET 6 OF 10 SHEETS STA. 925+50 TO STA. 940+50

F.A.S. RTE.	SECTION	COUNTY	TOTAL SHEETS	SHEET NO.
212	19-00117-03-PV	MERCER	16	11
CONTRACT NO. 89790				
ILLINOIS FED. AID PROJECT				

PLAN	SUBMITTED	DATE
	PLOTTED	
	ALIGNMENT CHECKED	
	GRADE CHECKED	
	CAAD FILE NAME	
	NOTE BOOK NO.	

PROFILE	SUBMITTED	DATE
	PLOTTED	
	GRADES CHECKED	
	STRUCTURE NOTATIONS CHECKED	
	NO	

MODEL: EX_CH9 - CH 9 Plan-3 (Sheet)
 FILE NAME: V:\0997 - CH 9 FOR - Inmate II (Inmate) - ColNorth - Section\CAAD\CAAD Sheets\0997-03-16-13.dwg, .am



USER NAME =	SHughes	DESIGNED -	LDZ	REVISED -	
DRAWN -	SRH	REVISOR -		REVISOR -	
CHECKED -	WSL	REVISOR -		REVISOR -	
DATE -	10-19-21	REVISOR -		REVISOR -	
PLOT SCALE =	0.16666633' = 1'				
PLOT DATE =	1/7/2022				

**MERCER COUNTY
HIGHWAY DEPARTMENT**

**COUNTY HIGHWAY 9
PLAN & PROFILE**

SCALE: H=50 V=5 SHEET 10 OF 10 SHEETS STA. 985+50 TO STA. 994+50

F.A.S. RTE.	SECTION	COUNTY	TOTAL SHEETS	SHEET NO.
212	19-00117-03-PV	MERCER	16	15
CONTRACT NO. 89790				
ILLINOIS FED. AID PROJECT				



LEGEND

① ROAD CLOSED AHEAD

② →

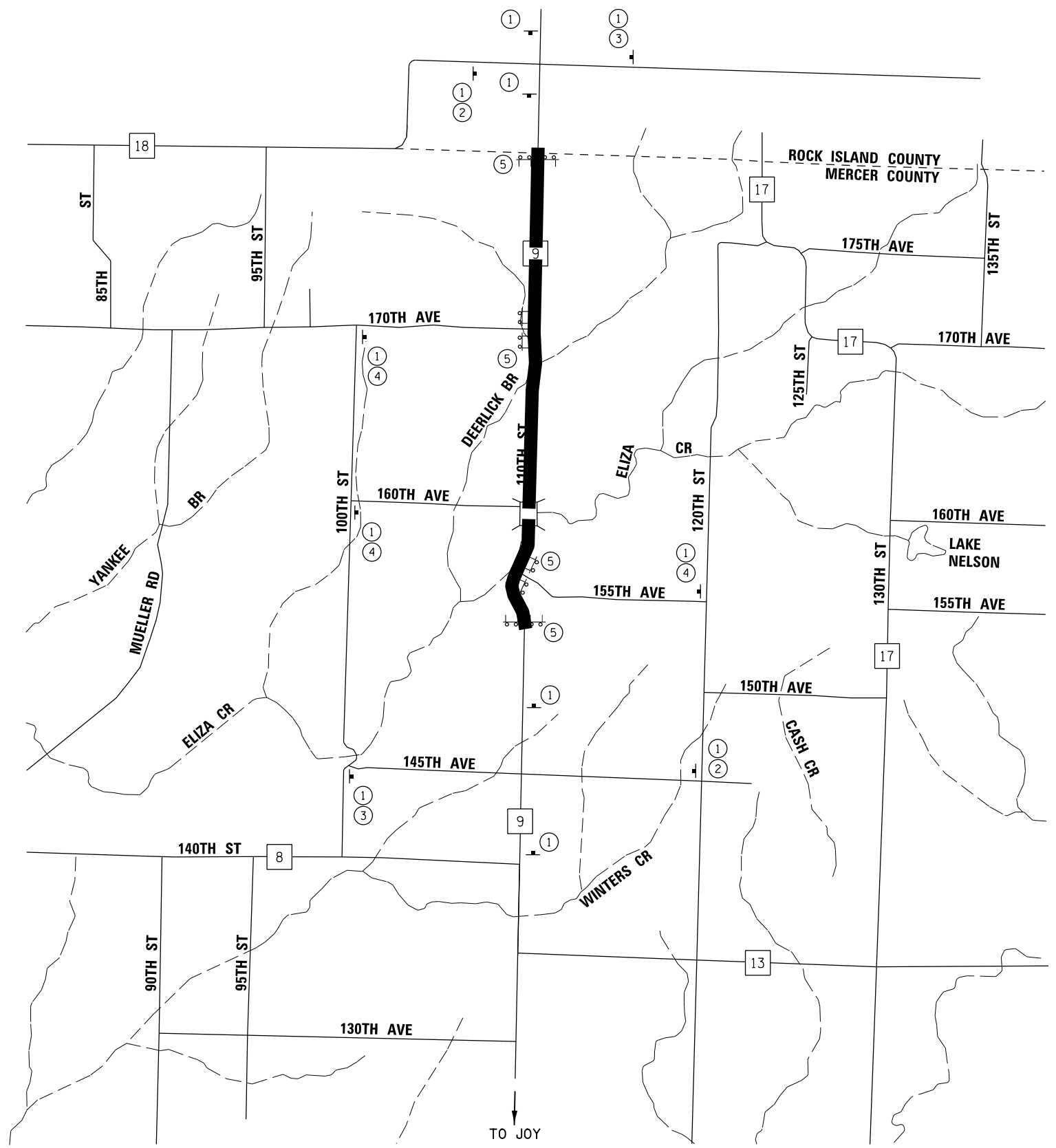
③ ←

④ ↔

⑤ ROAD CLOSED

— T — POST MOUNTED SIGN

— T — TYPE III BARRICADE



- MAINTENANCE OF TRAFFIC NOTES:**
1. ALL WORK ASSOCIATED WITH MAINTENANCE OF TRAFFIC SHALL BE PAID FOR AS TRAFFIC CONTROL AND PROTECTION (SPECIAL).
 2. THE ROAD SHALL BE CLOSED TO "LOCAL TRAFFIC ONLY" FROM THE START OF THE PULVERATION PROCESS TO THE END OF THE CEMENT CURING PERIOD.

MODEL Default
 FILE: \\miller-wa-9399 - CH 9 FDR - Phase II Mercer Co\North Section\CADD\CADD Sheets\0489790-01-16-2022.dgn

Hutchison Engineering, Inc.
 Jacksonville - Peoria - Quad Cities - Shorewood
 Since 1945

USER NAME = SHUGHES	DESIGNED - LDZ	REVISED -
PLOT SCALE = 2,000' / in.	DRAWN - SRH	REVISED -
PLOT DATE = 1/6/2022	CHECKED - WSL	REVISED -
	DATE - 9-27-21	REVISED -

**MERCER COUNTY
HIGHWAY DEPARTMENT**

**COUNTY HIGHWAY 9
TRAFFIC CONTROL PLAN**

SCALE: N/A SHEET 1 OF 1 SHEETS STA. N/A TO STA. N/A

F.A.S RTE.	SECTION	COUNTY	TOTAL SHEETS	SHEET NO.
212	19-00117-03-PV	MERCER	16	16
CONTRACT NO. 89790				
ILLINOIS FED. AID PROJECT				