

04-29-2022 LETTING ITEM 119

**INDEX OF SHEETS**

- 1 COVER SHEET
- 2 GENERAL NOTES, LEGEND, PAVEMENT DESIGN INFORMATION, SUMMARY OF QUANTITIES
- 3-5 TYPICAL SECTIONS
- 6 SCHEDULE OF QUANTITIES
- 7-11 COUNTY HIGHWAY 4 - ROADWAY PLANS
- 12-15 COUNTY HIGHWAY 14 - ROADWAY PLANS
- 16-28 COUNTY HIGHWAY 20 - ROADWAY PLANS

**REQUIRED STANDARDS**

- 000001-08 STANDARD SYMBOLS, ABBREVIATIONS, AND PATTERNS
- 701006-05 OFF-RD OPERATIONS, 2L, 2W, 15' (4.5m) TO 24" (600mm) FROM PAVEMENT EDGE
- 701201-05 LANE CLOSURE, 2L, 2W, DAY ONLY, FOR SPEEDS  $\geq$  45 MPH
- 701301-04 LANE CLOSURE, 2L, 2W, SHORT TERM OPERATIONS
- 701306-04 LANE CLOSURE 2L, 2W SLOW MOVING OPERATIONS DAY ONLY, FOR SPEEDS > 45MPH
- 701311-03 LANE CLOSURE 2L, 2W MOVING OPERATIONS - DAY ONLY
- 701901-08 TRAFFIC CONTROL DEVICES
- 780001-05 TYPICAL PAVEMENT MARKINGS

**GAS & ELECTRIC**  
MENARD ELECTRIC COOPERATIVE  
AMEREN CIPS

**CABLE TV**  
CASS CABLE TV, INC.

**TELEPHONE & INTERNET**  
FRONTIER COMMUNICATIONS  
CASS COMMUNICATIONS  
CENTURYLINK

**WATER & SEWER**  
VILLAGE OF FOREST CITY  
CITY OF HAVANA



HORIZONTAL PLAN

FULL SIZE PLANS HAVE BEEN PREPARED USING STANDARD ENGINEERING SCALES. REDUCED SIZE PLANS WILL NOT CONFORM TO STANDARD SCALES. IN MAKING MEASUREMENTS ON REDUCED PLANS THE ABOVE SCALES MAY BE USED.

J.U.L.I.E.  
JOINT UTILITY LOCATION INFORMATION FOR EXCAVATION  
1-800-892-0123 OR 811

SEC 20-00068-00-PP  
CH 20 BEGINS  
STATION 700+00.00

SEC 20-00068-00-PP  
CH 20 ENDS  
STATION 622+04.08

SEC 20-00068-00-PP  
CH 14 BEGINS  
STATION 1000+00.00

OMISSION  
COUTY HIGHWAY 14  
STATION 1002+04.00  
TO  
STATION 1002+15.00

SEC 20-00068-00-PP  
CH 14 ENDS  
STATION 1226+35.00

SEC 20-00068-00-PP  
CH 4 ENDS  
STATION 256+46.00

OMISSION  
COUTY HIGHWAY 4  
STATION 244+65.00  
TO  
STATION 247+55.47

OMISSION  
COUTY HIGHWAY 4  
STATION 231+33.00  
TO  
STATION 232+37.00

SEC 20-00068-00-PP  
CH 4 BEGINS  
STATION 4+29.25

STATE OF ILLINOIS

DEPARTMENT OF TRANSPORTATION  
DIVISION OF HIGHWAYS

PLANS FOR PROPOSED  
SURFACE TRANSPORTATION/RURAL PROGRAM

MASON COUNTY

FAS 461 & FAS 567

SECTION 20-00068-00-PP

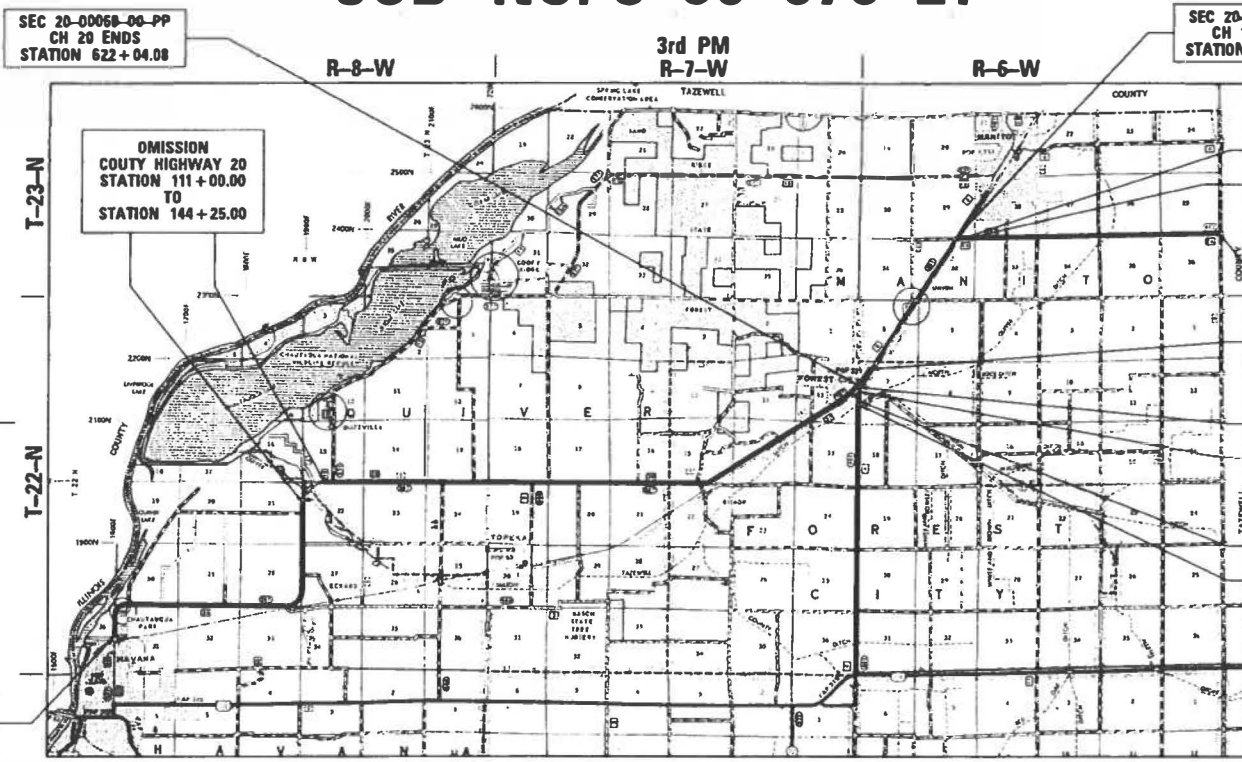
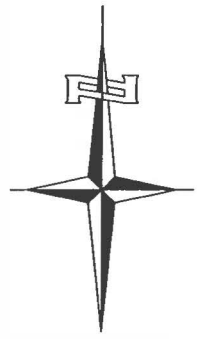
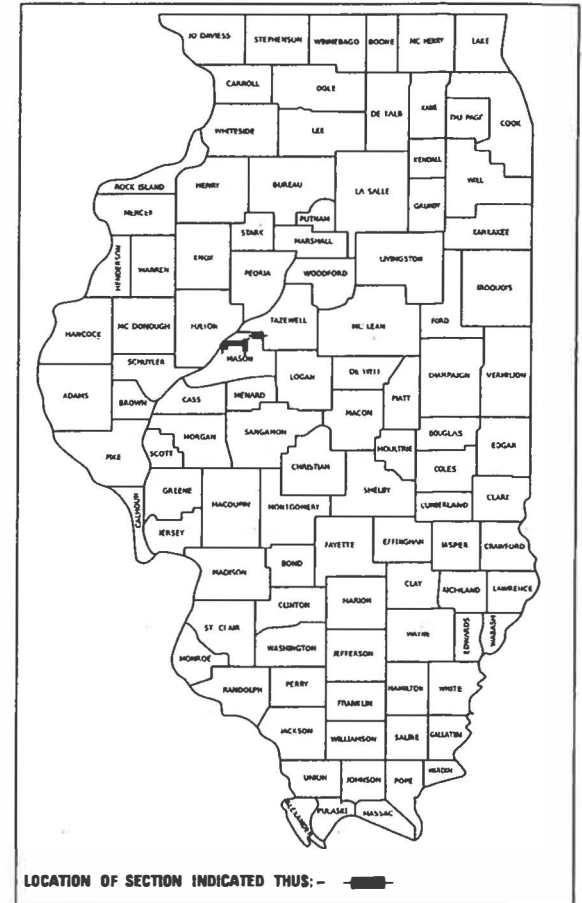
COUNTY HIGHWAY 4, COUNTY HIGHWAY 14

& COUNTY HIGHWAY 20

PROJECT NO. HWVQ(638)

JOB NO. C-96-070-21

F.A.S. RTE.	SECTION	COUNTY	TOTAL SHEETS	SHEET NO.
461 567	20-00068-00-PP	MASON	28	1
		ILLINOIS	CONTRACT NO. 93784	



APPROXIMATE SCALE

GROSS LENGTH = 124,002.47 FT. = 23.485 MILE  
NET LENGTH = 120,562.47 FT. = 22.834 MILE

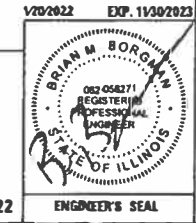
**DESCRIPTION OF WORK**  
THIS PROJECT CONSISTS OF A BITUMINOUS CAPE SEAL RESURFACING TO IMPROVE COUNTY HIGHWAY 4, COUNTY HIGHWAY 14 & COUNTY HIGHWAY 20. ALSO INCLUDED WILL BE PAVEMENT MARKING, AND AGGREGATE SHOULDER REPAIR.

APPROVED *January 18, 2022*  
*[Signature]*  
MASON COUNTY ENGINEER

PASSED *January 27, 2022*  
*[Signature]*  
DISTRICT SIX ENGINEER OF LOCAL ROADS & STREETS

Retaining For Bid Based on Limited Review *January 27, 2022*  
*[Signature]*  
DEPUTY CHIEF OF HIGHWAYS, REGION FOUR ENGINEER

HUTCHISON ENGINEERING, INC  
CONSULTING ENGINEERS  
JACKSONVILLE, ILLINOIS



2022 JOB NO 4922

ENGINEER'S SEAL

STATE OF ILLINOIS  
DEPARTMENT OF TRANSPORTATION

CONTRACT NO. 93784

PLOT DATE = 1/26/2022  
 FILE NAME = M:\V2022 - CH 4 - Ch 14 - Ch 20 Cape Seal Mason\CAD\CAD Sheets\14122-C001.dwg  
 PLOT SCALE = 1/8" = 1' IN  
 PLOT DEVICE = D:\dwgplot

## GENERAL NOTES

1. FOR THE CAPE SEAL, CRUSHED STONE, CA-20 OR CA 16 SHALL BE UTILIZED FOR THE A-1 SURFACE TREATMENT.
2. THE LOCATION OF UNDERGROUND UTILITIES SHOWN ON THE PLANS REPRESENTS THE BEST KNOWLEDGE OF THE COUNTY AND THE INDICATED ADJUSTMENTS OR RECONSTRUCTION ARE CONSIDERED TO BE REASONABLY ACCURATE. IT SHALL BE THE CONTRACTOR'S RESPONSIBILITY TO VERIFY LOCATIONS OF UNDERGROUND INSTALLATIONS BEFORE STARTING CONSTRUCTION OPERATIONS. THE CONTRACTOR SHALL INDEMNIFY THE COUNTY, ITS OFFICERS, AND EMPLOYEES AGAINST ALL CLAIMS DUE TO DAMAGE TO CORPORATE OR PRIVATE PROPERTY RESULTING FROM HIS CONSTRUCTION OPERATIONS AS DESCRIBED IN ARTICLE 107.20 AND 107.26 OF THE STANDARD SPECIFICATIONS FOR ROAD AND BRIDGE CONSTRUCTION.
3. THE CONTRACTOR SHALL NOTIFY THE AGENCIES AND UTILITIES AT LEAST 10 (TEN) DAYS PRIOR TO ANY CONSTRUCTION IN THE AREA AND SHALL COMPLY WITH ALL RESTRICTIONS FOR EQUIPMENT MOVEMENTS AND CLEARANCES AS REGARDS TO THEIR FACILITIES.
4. BEFORE STARTING ANY EXCAVATION, THE CONTRACTOR MUST CALL J.U.L.I.E. AT 1-800-892-0123 FOR FIELD LOCATIONS OF BURIED ELECTRICAL, TELEPHONE, GAS FACILITIES, AND ALL PUBLIC UTILITIES. A 48 HOUR NOTIFICATION IS REQUIRED.
5. WHENEVER IT IS NECESSARY TO REMOVE BITUMINOUS AGGREGATE MIXTURE, OIL AND CHIP SURFACE, EXISTING GRAVEL OR CRUSHED STONE BASE COURSE, IT SHALL BE REMOVED AT THE EXPENSE OF THE CONTRACTOR. NO ADDITIONAL COMPENSATION WILL BE ALLOWED FOR ADDITIONAL LABOR OR EQUIPMENT REQUIRED.
6. WHEN DURING CONSTRUCTION OPERATIONS ANY LOOSE MATERIAL IS DEPOSITED IN THE FLOW LINE OF DITCHES, GUTTER OR DRAINAGE STRUCTURES SO THAT THE NATURAL FLOW OF WATER IS OBSTRUCTED, IT SHALL BE REMOVED AT THE CLOSE OF EACH WORKING DAY. AT THE CONCLUSION OF THE CONSTRUCTION OPERATIONS, ALL DRAINAGE STRUCTURES SHALL BE FREE FROM ALL DIRT AND DEBRIS. THIS WORK WILL NOT BE PAID FOR SEPARATELY BUT SHALL BE INCLUDED IN THE COST OF THE HOT-MIX ASPHALT PAVING.
7. THE CONTRACTOR SHALL BE REQUIRED TO PROVIDE ACCESS TO ABUTTING PROPERTY AT ALL TIMES DURING THE CONSTRUCTION OF THIS IMPROVEMENT.
8. TRAFFIC CONTROL SIGNS REMOVED MUST BE RESET AT THEIR PERMANENT LOCATIONS IN A WORKMANLIKE MANNER AND VISIBLE TO TRAFFIC ON THE ROADWAY. THESE SIGNS SHALL BE INSTALLED IN ACCORDANCE WITH THE 'MANUAL ON UNIFORM TRAFFIC CONTROL DEVICES FOR STREET AND HIGHWAYS', LATEST EDITION. THE COST OF SUCH WORK SHALL BE INCLUDED IN THE COST OF THE CAPE SEAL.
9. THE NOMINAL THICKNESS FOR THE SURFACE COURSE IS SHOWN ON THE SPECIAL DETAIL. THE CONSTRUCTED THICKNESS OF THE ABOVE ITEMS SHALL NOT BE LESS THAN 90 PER CENT OF THE NOMINAL THICKNESS AT ANY LOCATION.
10. WHERE SECTION OR SUBSECTION STONES OR MARKERS ARE ENCOUNTERED, THE ENGINEER SHALL BE NOTIFIED BEFORE SUCH STONES ARE REMOVED. THE CONTRACTOR SHALL PROTECT AND CAREFULLY PRESERVE ALL PROPERTY MARKERS UNTIL THE OWNER, AN AUTHORIZED SURVEYOR, OR AGENT HAS WITNESSED OR OTHERWISE REFERENCED THEIR LOCATION.
11. ALL PROPOSED PAVEMENT WIDTHS ARE MEASURED EDGE TO EDGE OF PAVEMENT UNLESS OTHERWISE SHOWN ON THE PLANS. INTERSECTION RETURN RADII ARE MEASURED TO THE EDGE OF PAVEMENT.
12. IT IS THE RESPONSIBILITY OF THE CONTRACTOR TO MAKE A RECORD OF THE NO PASSING ZONE PAVEMENT MARKING LIMITS PRIOR TO THE APPLICATION OF THE CAPE SEAL. THE COST OF SUCH WORK SHALL BE INCLUDED IN THE COST OF THE PAVEMENT MARKING.
13. KNOWN UTILITIES LOCATED WITHIN THE LIMITS OF THIS IMPROVEMENT ARE:  

MENDARD ELECTRIC COOP	AMEREN CIPS
CASSCOMM	VILLAGE OF FOREST CITY WATER
CENTURYLINK	CITY OF HAVANA WATER
14. AGGREGATE SHOULDER QUANTITIES SHOWN IN THE PLANS IS AN ESTIMATE. ACTUAL SHOULDERS SHALL BE CONSTRUCTED AS DIRECTED BY THE ENGINEER.

CONSTR. CODE	
MASON	COUNTY
ROADWAY	0005
RURAL	

CODE NO.	ITEM	UNIT	TOTAL QUANTITY	CONSTR. CODE
40500061	CAPE SEAL	SQ YD	297190	297190
48102100	AGGREGATE WEDGE SHOULDER, TYPE B	TON	10157	10157
67100100	MOBILIZATION	L SUM	1	1
70300100	SHORT TERM PAVEMENT MARKING	FOOT	12146	12146
70300150	SHORT TERM PAVEMENT MARKING REMOVAL	SQ FT	4050	4050
70300221	TEMPORARY PAVEMENT MARKING - LINE 4"- PAINT	FOOT	12146	12146
△ 78001100	PAINT PAVEMENT MARKING - LETTERS AND SYMBOLS	SQ FT	245	245
△ 78001120	PAINT PAVEMENT MARKING - LINE 5"	FOOT	315973	315973
△ 78001180	PAINT PAVEMENT MARKING - LINE 24"	FOOT	150	150
+ Z0076600	TRAINEES	Hour	1000	
* X7010216	TRAFFIC CONTROL AND PROTECTION, (SPECIAL)	L SUM	1	1
+ Z0076604	TRAINEES TRAINING PROGRAM GRADUATE	Hour	1000	
* Z0048665	RAILROAD PROTECTIVE LIABILITY INSURANCE	L SUM	1	1

\* SEE SPECIAL PROVISIONS  
 △ SPECIALTY ITEMS  
 + = 0042

## APPLICATION RATES

A-1 SURFACE TREATMENT AGGREGATE: 18-26 LB/SY (2.05 TON/CY)  
 A-1 SURFACE TREATMENT BITUMINOUS MATERIALS: 0.20-0.50 GAL/SY (8.40 LBS/GAL)  
 MICROSURFACING: 24 LB/SY

MODEL: \$MODELNAME\$ FILE NAME: V-1922 - CH 4 - CI 14 - CI 20 Cape Seal (Mason)CADD Sheets1922-001.dgn

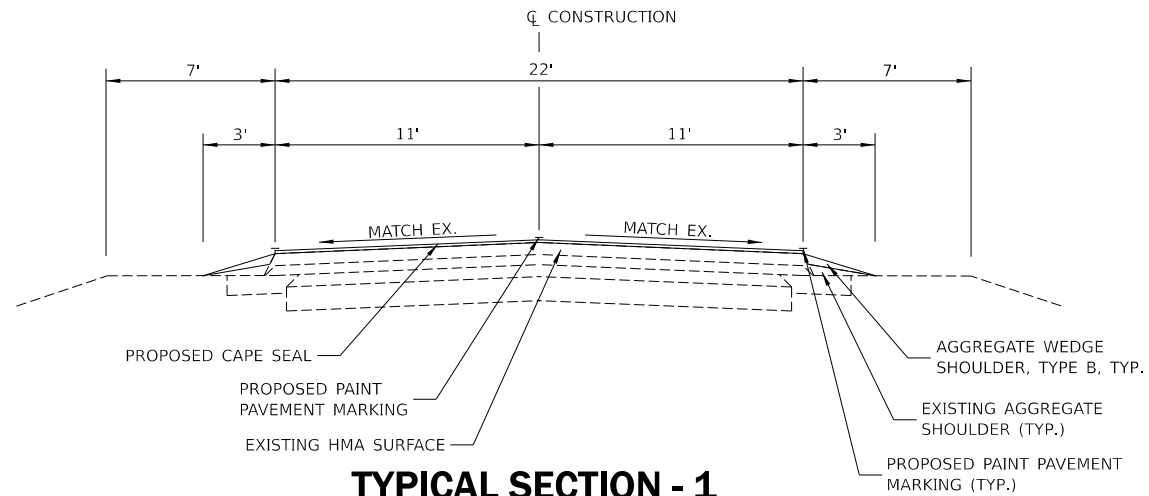
USER NAME = BBorgman	DESIGNED -	REVISED -	
	DRAWN -	REVISED -	
PLOT SCALE = 100.0000" / in.	CHECKED -	REVISED -	
PLOT DATE = 1/20/2022	DATE -	REVISED -	

**MASON COUNTY  
 CH 4, CH 14 & CH 20  
 PAVEMENT PRESERVATION**

**GENERAL NOTES, LEGEND, PAVEMENT DESIGN INFORMATION,  
 SUMMARY OF QUANTITIES**

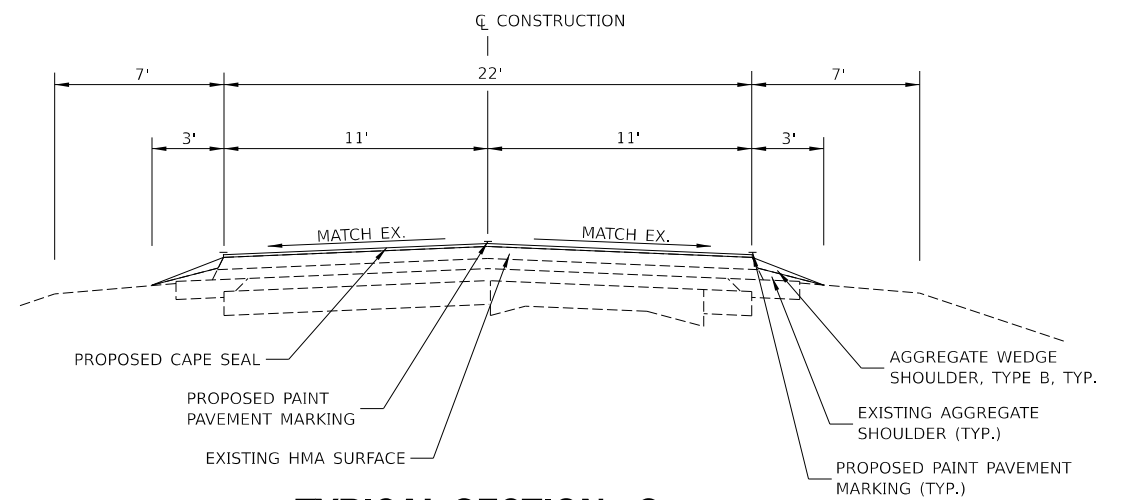
SCALE: NONE    SHEET 1 OF 1 SHEETS    STA.    TO STA.

F.A.S. RTE.	SECTION	COUNTY	TOTAL SHEETS	SHEET NO.
461 567	20-00068-00-PP	MASON	28	2
CONTRACT NO. 93784				
ILLINOIS    FED. AID PROJECT				



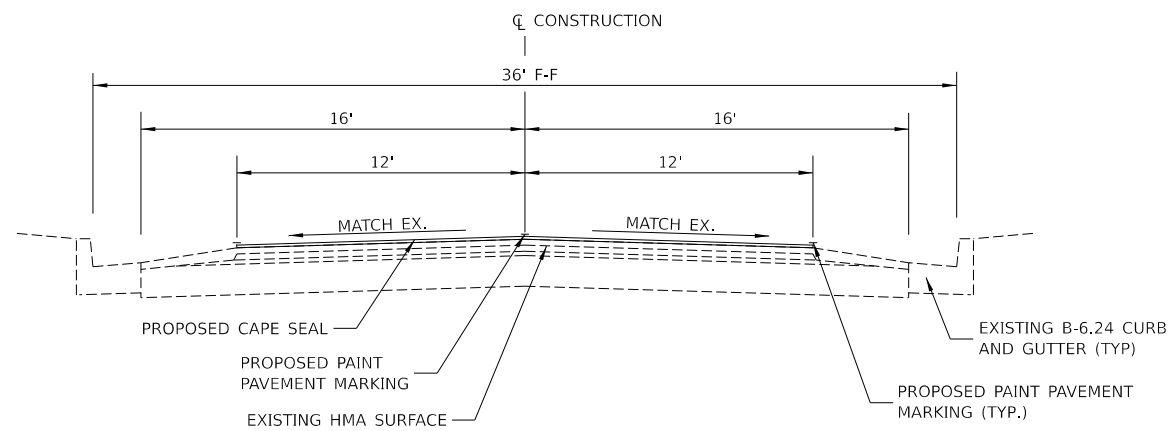
**TYPICAL SECTION - 1**

COUNTY HIGHWAY 4  
 STA 4+29.25 TO STA 56+53.00  
 STA 200+11.00 TO STA 231+33.00  
 BRIDGE OMISSION: STA 231+33.00 TO STA 232+37.00  
 STA 232+37.00 TO STA 244+65.00  
 OMISSION: STA 244+65.00 TO STA 247+55.47



**TYPICAL SECTION - 2**

COUNTY HIGHWAY 4  
 STA 56+53.00 TO STA 200+11.00



**TYPICAL SECTION - 3**

COUNTY HIGHWAY 4  
 STA 247+55.47 TO STA 256+47.00

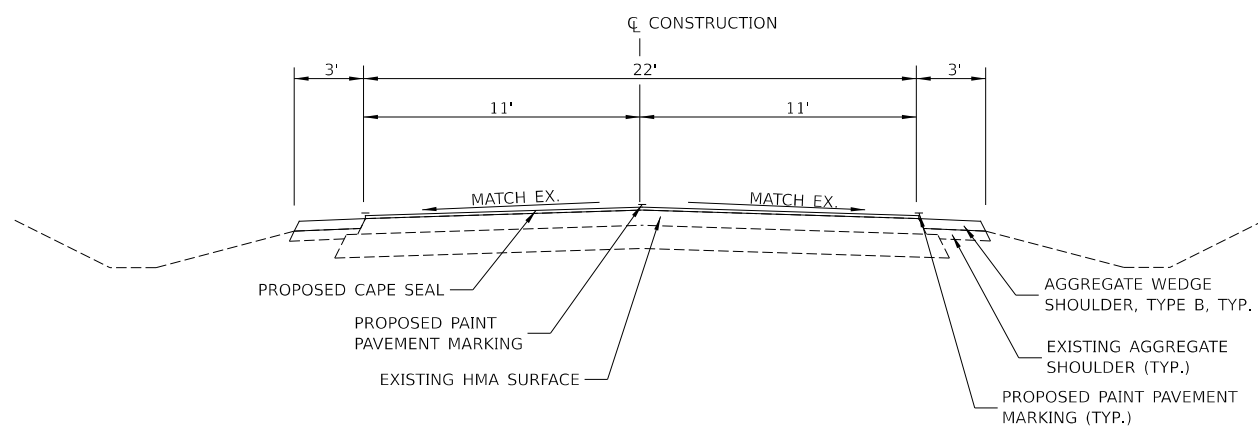
MODEL: \\MODELS\MAME  
 FILE NAME: V:\1922 - CH 4 - CH 14 - CH 20 Cape Seal (Mason)\CADD\CADD Sheets\1922-T001.dgn

USER NAME = BBorgman	DESIGNED -	REVISED -
	DRAWN -	REVISED -
PLOT SCALE = 2,000' / in.	CHECKED -	REVISED -
PLOT DATE = 1/20/2022	DATE -	REVISED -

**MASON COUNTY**  
**CH 4, CH 14 & CH 20**  
**PAVEMENT PRESERVATION**

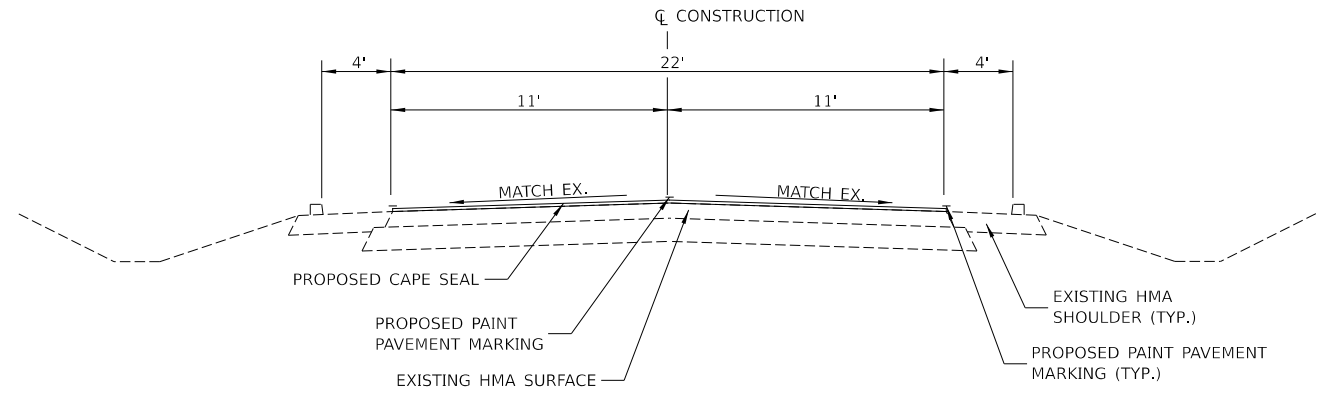
<b>TYPICAL SECTIONS</b>	
SCALE: NONE	SHEET 1 OF 3 SHEETS
STA.	TO STA.

F.A.S. RTE. 461/567	SECTION 20-00068-00-PP	COUNTY MASON	TOTAL SHEETS 28	SHEET NO. 3
CONTRACT NO. 93784				
ILLINOIS FED. AID PROJECT				



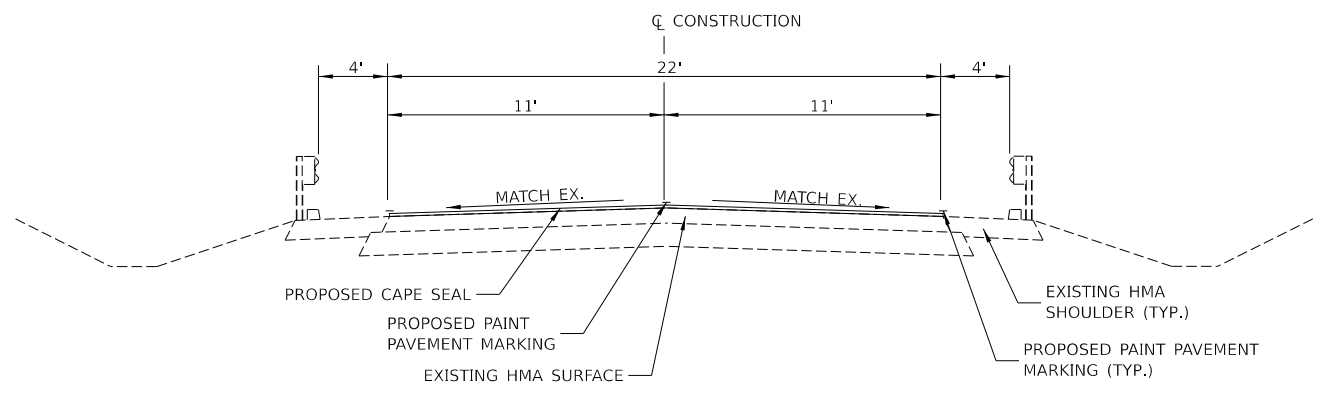
**TYPICAL SECTION - 4**

COUNTY HIGHWAY 14  
 STA 1000+00.00 TO STA 1002+04.00  
 RAILROAD OMISSION: STA 1002+04.00 TO STA 1002+15.00  
 STA 1002+15.00 TO STA 1226+35.00



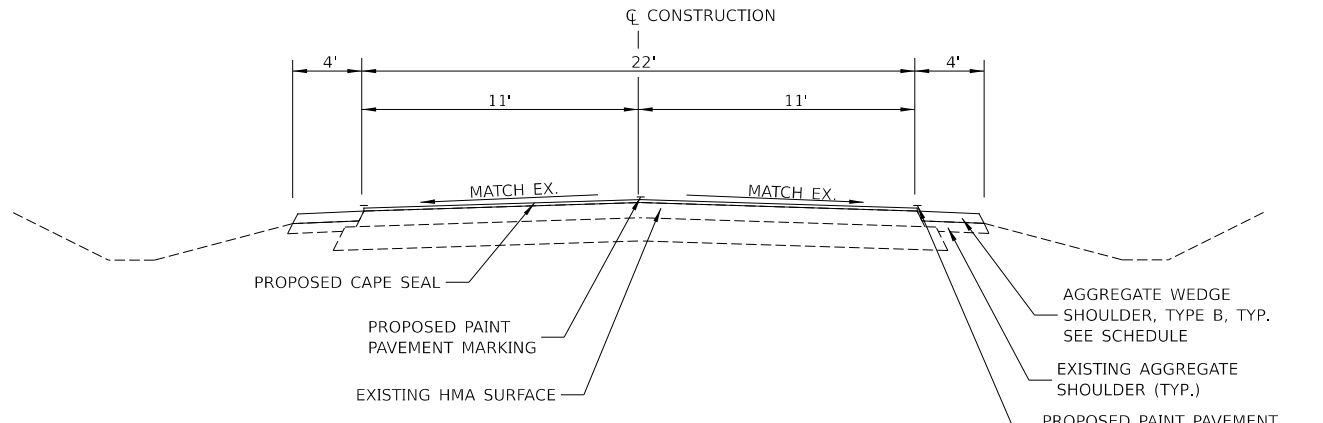
**TYPICAL SECTION - 6**

COUNTY HIGHWAY 20  
 STA 703+05.00 TO STA 705+97.00



**TYPICAL SECTION - 5**

COUNTY HIGHWAY 20  
 STA 700+00.00 TO STA 703+05.00



**TYPICAL SECTION - 7**

COUNTY HIGHWAY 20  
 STA 705+97.00 TO STA 713+61.00  
 STA 734+34.00 TO STA 869+42.00  
 STA 889+70.00 TO STA 951+27.64  
 STA EQ: 951+27.64 (BK) = 100+00.00 (AH)  
 STA 100+00.00 TO STA 111+00.00  
 OMISSION: STA 111+00.00 TO STA 144+24.00  
 STA 144+25.00 TO STA 613+80.00

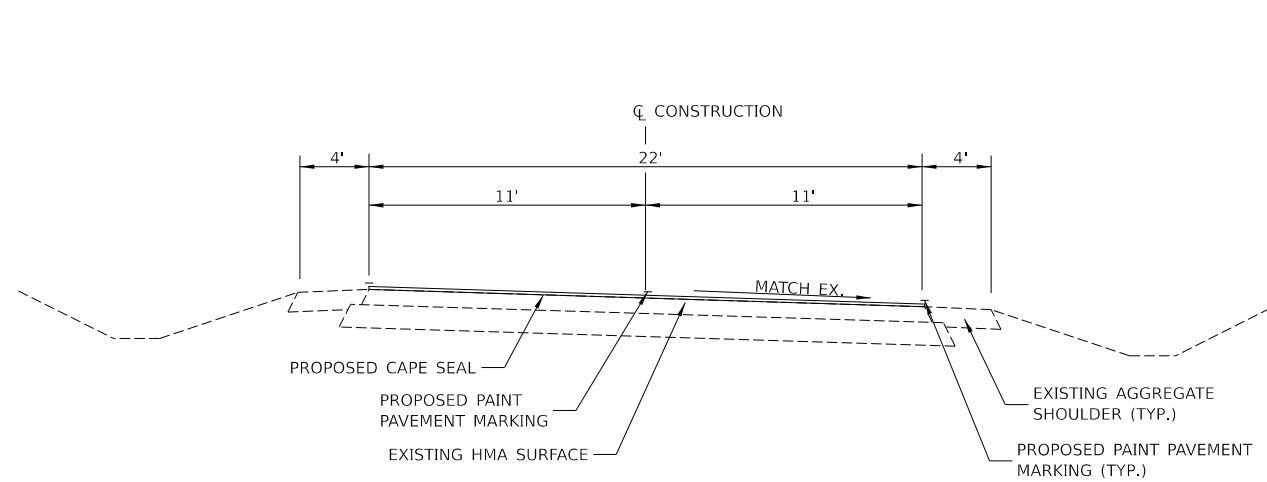
MODEL: \\MODEL\NAME  
 FILE NAME: V:\1922 - CH 4 - CH 14 - CH 20 Cape Seal (Mason)\CADD\CADD Sheets\1922-T002.dgn

USER NAME = BBorgman	DESIGNED -	REVISED -
	DRAWN -	REVISED -
PLOT SCALE = 2,0000' / in.	CHECKED -	REVISED -
PLOT DATE = 1/20/2022	DATE -	REVISED -

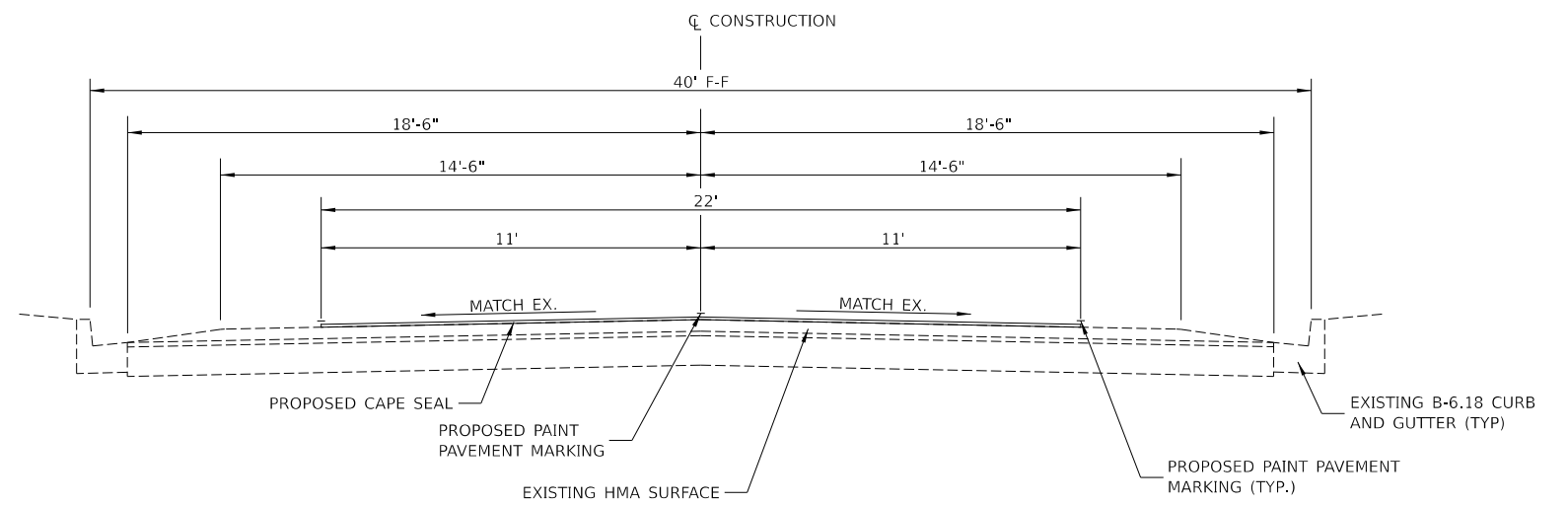
**MASON COUNTY  
 CH 4, CH 14 & CH 20  
 PAVEMENT PRESERVATION**

<b>TYPICAL SECTIONS</b>	
SCALE: NONE	SHEET 2 OF 3 SHEETS
STA.	TO STA.

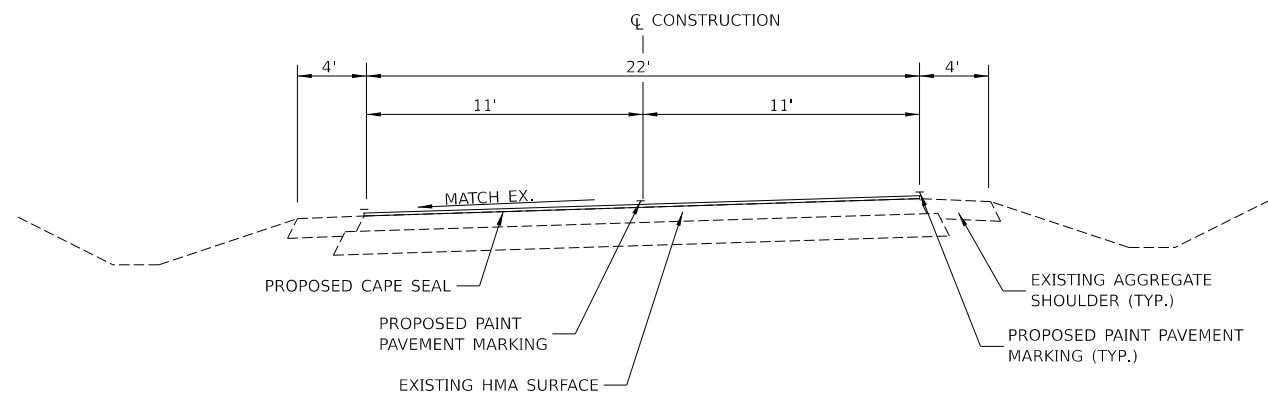
F.A.S. RTE. 461/567	SECTION 20-00068-00-PP	COUNTY MASON	TOTAL SHEETS 28	SHEET NO. 4
CONTRACT NO. 93784				
ILLINOIS FED. AID PROJECT				



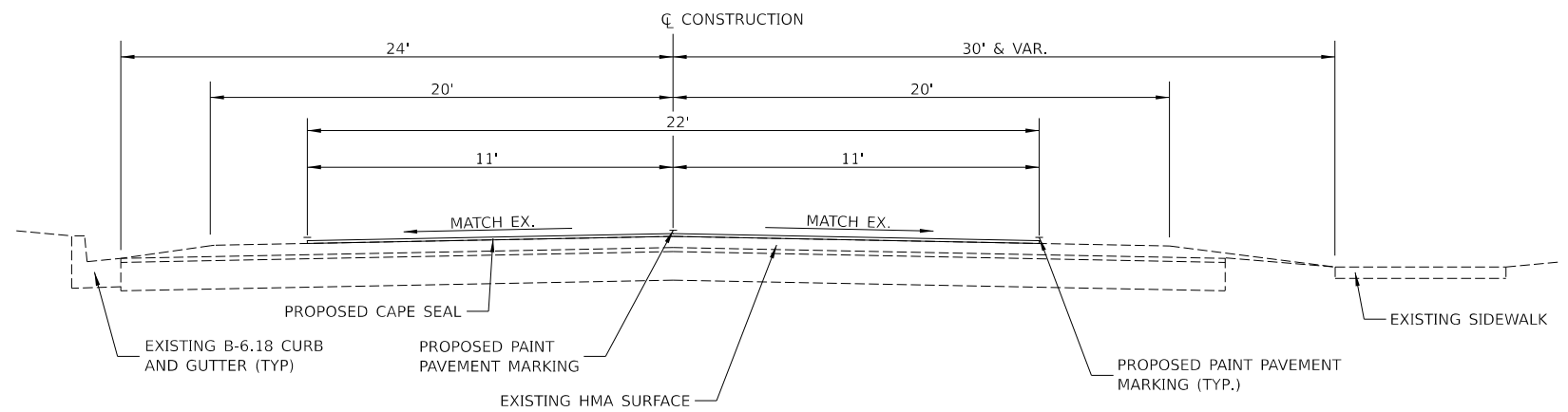
**TYPICAL SECTION - 8**  
 COUNTY HIGHWAY 20  
 STA 713+61.00 TO STA 734+34.00



**TYPICAL SECTION - 10**  
 COUNTY HIGHWAY 20  
 STA 613+80.00 TO STA 617+69.00



**TYPICAL SECTION - 9**  
 COUNTY HIGHWAY 20  
 STA 869+42.00 TO STA 889+70.00



**TYPICAL SECTION - 11**  
 COUNTY HIGHWAY 20  
 STA 617+69.00 TO STA 622+04.08

MODEL: \\MODELS\MAME  
 FILE NAME: V:\1922 - CH 4 - CH 14 - CH 20 Cape Seal (Mason)\CADD\CADD\_Sheets\1922-T003.dgn

USER NAME = BBorgman	DESIGNED -	REVISED -
	DRAWN -	REVISED -
PLOT SCALE = 2,000' / in.	CHECKED -	REVISED -
PLOT DATE = 1/20/2022	DATE -	REVISED -

**MASON COUNTY  
 CH 4, CH 14 & CH 20  
 PAVEMENT PRESERVATION**

<b>TYPICAL SECTIONS</b>			
SCALE: NONE	SHEET 3	OF 3 SHEETS	STA. TO STA.

F.A.S. RTE. 461/567	SECTION 20-00068-00-PP	COUNTY MASON	TOTAL SHEETS 28	SHEET NO. 5
CONTRACT NO. 93784				
ILLINOIS FED. AID PROJECT				

PAVEMENT MARKING SCHEDULE						
STATION TO STATION	DESCRIPTION	PAINT PAVEMENT MARKING				LETTERS & SYMBOLS
		5"		24"	SQ FT	
		YELLOW	WHITE	WHITE		
		FOOT				
<b>COUNTY HIGHWAY 4</b>						
4+29	90+31	SKIP-DASH	2151			
4+29	4+81	NB EDGE		81		
4+29	4+81	SB EDGE		81		
4+81	56+61	NB EDGE		5180		
4+81	57+35	SB EDGE		5254		
57+55	109+20	SB EDGE		5165		
58+39	110+42	NB EDGE		5203		
80+40	91+09	NB NPZ	1069			
90+31	115+72	SB NPZ	2541			
91+09	100+93	SKIP-DASH	246			
100+93	109+92	NB NPZ	899			
109+92	241+21	SKIP-DASH	3282			
110+14	130+43	SB EDGE		2029		
111+51	162+83	NB EDGE		5132		
131+17	162+51	SB EDGE		3134		
163+40	244+54	SB EDGE		8114		
163+88	230+73	NB EDGE		6685		
231+30	241+94	NB EDGE		1064		
241+21	244+65	NB NPZ	344			
241+21	244+65	SB NPZ	344			
243+09	244+76	NB EDGE		167		
243+20		STOP BAR			11	
243+45		RR CROSS				61.2
243+70		STOP BAR				11
244+65		STOP BAR				11
245+00		STOP BAR				11
245+00	247+30	NB NPZ	230			
245+00	247+30	SB NPZ	230			
245+00	247+30	NB EDGE		230		
245+00	247+30	SB EDGE		230		
246+05		STOP BAR			11	
246+30		RR CROSS				61.2
246+55		STOP BAR			11	
247+55	256+46	NB NPZ	891			
247+55	256+46	SB NPZ	891			
247+55	247+83	SB EDGE		28		
247+55	256+46	NB EDGE		891		
248+52	256+46	SB EDGE		794		
<b>COUNTY HIGHWAY 14</b>						
1000+00	1000+66	EB EDGE		123	18	
1000+00	1002+04	EB NPZ	204			
1000+00	1002+04	WB NPZ	204			
1000+36	1000+66	WB EDGE		73		
1000+63		STOP BAR			11	
1000+66	1001+97	EB EDGE		131		
1000+66	1002+10	WB EDGE		144		
1000+88		RR CROSS				61.2
1001+13		STOP BAR			11	
1001+74		STOP BAR			11	

PAVEMENT MARKING SCHEDULE (CONT.)						
STATION TO STATION	DESCRIPTION	PAINT PAVEMENT MARKING				LETTERS & SYMBOLS
		5"		24"	SQ FT	
		YELLOW	WHITE	WHITE		
		FOOT				
<b>COUNTY HIGHWAY 14 (CONT.)</b>						
1002+15	1003+52	EB EDGE		137		
1002+15	1009+11	WB EDGE		696		
1002+09	1042+01	EB EDGE		3992		
1002+22	1042+06	WB EDGE		3984		
1002+43		STOP BAR			11	
1003+52	1190+62	SKIP-DASH	4678			
1006+88		STOP BAR			11	
1007+13		RR CROSS				61.2
1007+38		STOP BAR			11	
1040+68	1049+20	EB NPZ	852			
1042+70	1069+01	EB EDGE		2631		
1042+87	1046+65	WB EDGE		378		
1047+22	1069+01	WB EDGE		2179		
1049+20	1058+21	WB NPZ	901			
1069+70	1122+41	EB EDGE		5271		
1069+70	1122+07	WB EDGE		5237		
1122+62	1226+35	WB EDGE		10373		
1123+04	1175+24	EB EDGE		5220		
1175+93	1226+35	EB EDGE		5042		
1178+49	1191+08	EB NPZ	1259			
1190+62	1200+97	WB NPZ	1035			
1191+08	1226+35	SKIP-DASH	882			
<b>COUNTY HIGHWAY 20 (E MANITO RD)</b>						
700+00	738+59	WB NPZ	3859			
700+00	734+73	EB NPZ	3473			
700+00	707+15	WB EDGE		715		
700+00	719+84	EB EDGE		1984		
708+02	719+84	WB EDGE		1182		
720+32	866+17	EB EDGE		14585		
720+61	732+85	WB EDGE		1224		
733+85	761+92	WB EDGE		2807		
734+73	868+76	SKIP-DASH	3351			
754+23	761+43	EB NPZ	720			
761+43	770+90	WB NPZ	947			
762+55	815+57	WB EDGE		5302		
816+11	951+28	WB EDGE		13517		
857+72	893+52	EB NPZ	3580			
867+12	902+60	EB EDGE		3548		
868+76	901+44	WB NPZ	3268			
893+52	951+28	SKIP-DASH	1444			
903+15	929+09	EB EDGE		2594		
929+65	951+28	EB EDGE		2163		
100+00	111+00	SKIP-DASH	275			
100+00	104+29	WB EDGE		429		
100+00	111+00	EB EDGE		1100		
105+10	111+00	WB EDGE		590		
144+25	144+63	EB NPZ	38			
144+25	152+47	WB NPZ	822			
144+25	149+45	WB EDGE		520		

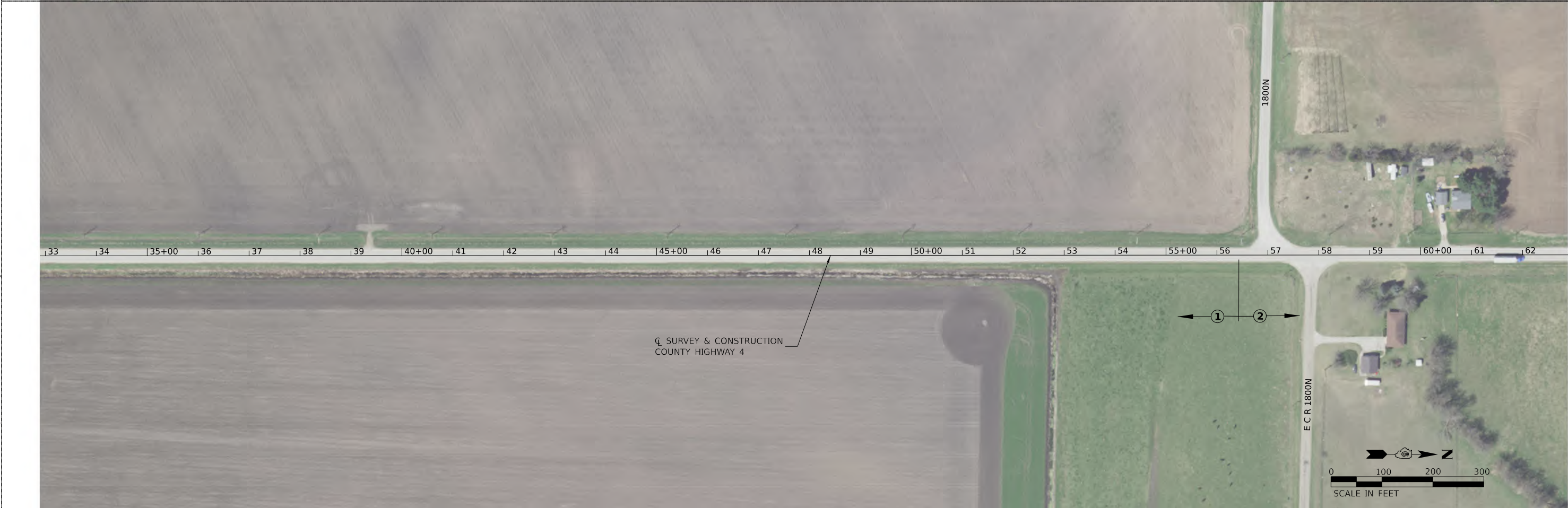
PAVEMENT MARKING SCHEDULE (CONT.)						
STATION TO STATION	DESCRIPTION	PAINT PAVEMENT MARKING				LETTERS & SYMBOLS
		5"		24"	SQ FT	
		YELLOW	WHITE	WHITE		
		FOOT				
<b>COUNTY HIGHWAY 20 (E MANITO RD) (CONT.)</b>						
144+25	242+44	EB EDGE		9819		
144+63	412+58	SKIP-DASH	6699			
150+53	229+35	WB EDGE		7882		
229+90	268+96	WB EDGE		3906		
243+21	282+21	EB EDGE		3900		
269+72	332+71	WB EDGE		6299		
282+78	319+81	EB EDGE		3703		
320+69	359+16	EB EDGE		3847		
333+44	411+45	WB EDGE		7801		
359+74	462+40	EB EDGE		10266		
407+15	413+02	WB NPZ	587			
412+32	462+15	WB EDGE		4983		
412+58	425+90	EB NPZ	1332			
413+02	425+50	SKIP-DASH	312			
425+50	449+40	WB NPZ	2390			
425+90	430+41	SKIP-DASH	113			
430+41	438+45	EB NPZ	804			
438+45	447+63	SKIP-DASH	230			
447+63	481+97	EB NPZ	3434			
449+40	458+92	SKIP-DASH	238			
458+92	491+94	WB NPZ	3302			
462+78	541+42	WB EDGE		7864		
463+24	572+09	EB EDGE		10885		
481+97	558+75	SKIP-DASH	1920			
540+46	558+85	EB NPZ	1839			
542+30	572+58	WB EDGE		3028		
558+75	567+55	WB NPZ	880			
558+85	598+94	SKIP-DASH	1002			
572+89	617+43	EB EDGE		4454		
573+46	610+09	WB EDGE		3663		
594+79	622+04	EB NPZ	2725			
598+94	622+04	WB NPZ	2310			
610+69	617+43	WB EDGE		674		
617+95	621+22	EB EDGE		327		
617+95	621+07	WB EDGE		312		
<b>TOTAL</b>			<b>75027</b>	<b>240946</b>	<b>150</b>	<b>244.8</b>
<b>USE</b>			<b>315973</b>		<b>150</b>	<b>245</b>

AGGREGATE WEDGE SHOULDER, TYPE B					
STATION TO STATION	SIDE	WIDTH	LENGTH	TON	
<b>COUNTY HIGHWAY 4</b>					
4+29.25	56+59	LEFT	3'	5229.75'	298
4+29.25	57+33	RIGHT	3'	5303.75'	302
57+61	60+28	LEFT	3'	267'	15
58+36	110+50	RIGHT	3'	5214'	297
61+15	109+29	LEFT	3'	4814'	274
110+00	162+53	LEFT	3'	5253'	299
111+49	162+89	RIGHT	3'	5140'	293
163+37	231+17	LEFT	3'	6780'	386
163+80	230+76	RIGHT	3'	6696'	381
232+25	244+54	LEFT	3'	1229'	70
232+42	241+95	RIGHT	3'	953'	54
243+06	244+76	RIGHT	3'	170'	10
<b>COUNTY HIGHWAY 14</b>					
1000+00	1001+97	RIGHT	3'	197'	11
1000+36	1002+10	LEFT	3'	174'	10
1002+08	1042+04	RIGHT	3'	3996'	228
1002+22	1042+08	LEFT	3'	3986'	227
1042+68	1069+04	RIGHT	3'	2636'	150
1042+83	1046+65	LEFT	3'	382'	22
1047+18	1051+57	LEFT	3'	439'	25
1051+95	1052+90	LEFT	3'	95'	5
1053+55	1055+80	LEFT	3'	225'	13
1056+08	1059+00	LEFT	3'	292'	17
1059+45	1060+88	LEFT	3'	143'	8
1061+45	1065+07	LEFT	3'	362'	21
1065+57	1069+03	LEFT	3'	346'	20
1069+68	1070+93	LEFT	3'	125'	7
1069+71	1122+45	RIGHT	3'	5274'	300
1071+53	1095+24	LEFT	3'	2371'	135
1095+88	1122+04	LEFT	3'	2616'	149
1122+65	1226+40	LEFT	3'	10375'	591
1123+03	1175+26	RIGHT	3'	5223'	297
1175+92	1226+40	RIGHT	3'	5048'	287
<b>COUNTY HIGHWAY 20 (E MANITO RD)</b>					
950+00	951+27.64	LEFT	4'	128'	10
950+00	951+27.64	RIGHT	4'	128'	10
100+00	104+30	LEFT	4'	430'	33
100+00	104+60	RIGHT	4'	460'	35
104+92	111+00	LEFT	4'	608'	46
105+05	109+38	RIGHT	4'	433'	33
109+69	110+80	RIGHT	4'	111'	8
144+25	149+49	LEFT	4'	524'	40
144+40	163+20	LEFT	4'	1880'	143
150+55	178+13	RIGHT	4'	2758'	209
163+45	208+87	LEFT	4'	4542'	345
178+67	209+58	RIGHT	4'	3091'	235
209+09	269+03	LEFT	4'	5994'	455
209+81	242+50	RIGHT	4'	3269'	248
243+16	282+20	RIGHT	4'	3904'	296
269+60	332+68	LEFT	4'	6308'	479
282+77	319+89	RIGHT	4'	3712'	282
320+65	462+36	RIGHT	4'	14171'	1076
333+43	411+62	LEFT	4'	7819'	594
412+24	462+09	LEFT	4'	4985'	378
<b>TOTAL</b>					<b>10157</b>

CAPE SEAL SCHEDULE				
STATION TO STATION	WIDTH	LENGTH	CAPE SEAL SQ YD	
<b>COUNTY HIGHWAY 4</b>				
4+29.25	4+81	VARIES	51.75'	254
4+81	231+33	22'	22652'	55372
232+37	244+65	22'	1228'	3002
247+55.47	256+46	22'	890.53'	2177
<b>COUNTY HIGHWAY 14</b>				
1000+00	1000+66	VARIES	66'	339
1000+66	1002+04	22'	138'	337
1002+15	1226+35	22'	22420'	54804
<b>COUNTY HIGHWAY 20 (E MANITO RD)</b>				
700+00	951+27.64	22'	25127.64'	61423
100+00	111+00	22'	1100'	2689
144+25	622+04.08	22'	47779.08'	116793
<b>TOTAL</b>				<b>297190</b>

SHORT TERM PAVEMENT MARKING SCHEDULE					
STATION TO STATION	LENGTH	TEMPORARY PAVEMENT MARKING - LINE 4" - PAINT	SHORT TERM PAVEMENT MARKING	SHORT TERM PAVEMENT MARKING REMOVAL	
		FOOT	FOOT	SQ FT	
<b>COUNTY HIGHWAY 4</b>					
4+29.25	231+33	22707.75'	22		





MODEL: 41001\PLANES  
 FILE NAME: V04522 - CH 4 - CH 14 - CH 20 Copie Seal (Mason)\CADD\CADD Sheets\4922-CH4-PP.dgn

USER NAME = CThomas	DESIGNED - _____	REVISED - _____
	DRAWN - _____	REVISED - _____
PLOT SCALE = 199.99960000' / in.	CHECKED - _____	REVISED - _____
PLOT DATE = 1/19/2022	DATE - _____	REVISED - _____

**MASON COUNTY  
 CH 4, CH 14 & CH 20  
 PAVEMENT PRESERVATION**

SCALE: 1"=100'		SHEET 1 OF 5 SHEETS		STA. 4+29.28	TO STA. 63+00.00
		ILLINOIS FED. AID PROJECT			

F.A.S. RTE. 461/567	SECTION 20-00068-00-PP	COUNTY MASON	TOTAL SHEETS 28	SHEET NO. 7
CONTRACT NO. 93784				





MODEL: 41001.DWG  
 FILE NAME: V:\4522 - CH 4 - CH 14 - CH 20 Capes Seal (Mason)\CADD\CADD Sheets\4922-CH4-PP.dgn

USER NAME = CThomas	DESIGNED - _____	REVISED - _____
	DRAWN - _____	REVISED - _____
PLOT SCALE = 199.99960000' / in.	CHECKED - _____	REVISED - _____
PLOT DATE = 1/20/2022	DATE - _____	REVISED - _____

**MASON COUNTY  
 CH 4, CH 14 & CH 20  
 PAVEMENT PRESERVATION**

SCALE: 1"=100'		SHEET 2 OF 5 SHEETS		STA. 63+00.00 TO STA. 123+00.00		PLAN	
						COUNTY HIGHWAY 4	

F.A.S. RTE. 461 567	SECTION 20-00068-00-PP	COUNTY MASON	TOTAL SHEETS 28	SHEET NO. 8
CONTRACT NO. 93784				
ILLINOIS FED. AID PROJECT				





MODEL: 41001.DWG  
 FILE NAME: V04522 - CH 4 - CH 14 - CH 20 Capes Seal (Mason)\CADD\CADD Sheets\4932-CH4-PP.dgn

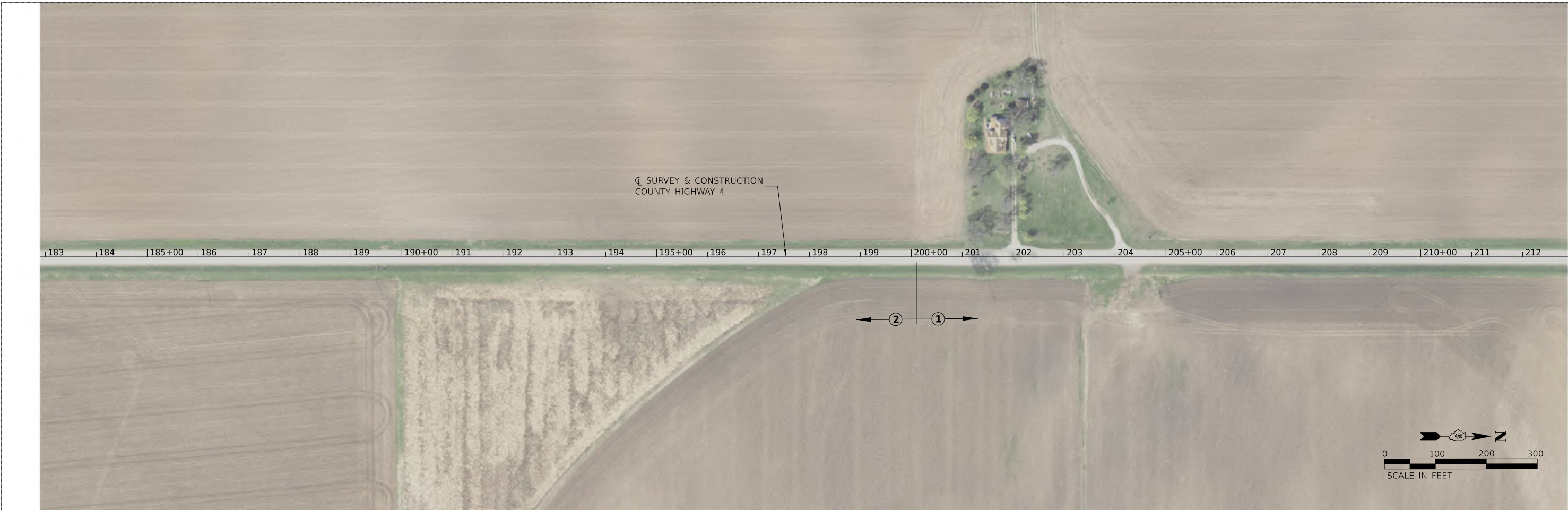
USER NAME = CThomas	DESIGNED - _____	REVISED - _____
	DRAWN - _____	REVISED - _____
PLOT SCALE = 199.99960000' / in.	CHECKED - _____	REVISED - _____
PLOT DATE = 1/20/2022	DATE - _____	REVISED - _____

**MASON COUNTY  
 CH 4, CH 14 & CH 20  
 PAVEMENT PRESERVATION**

<b>PLAN COUNTY HIGHWAY 4</b>	
SCALE: 1"=100'	SHEET 3 OF 5 SHEETS
STA. 123+00.00	TO STA. 183+00.00

F.A.S. RTE. 461 567	SECTION 20-00068-00-PP	COUNTY MASON	TOTAL SHEETS 28	SHEET NO. 9
CONTRACT NO. 93784				
ILLINOIS FED. AID PROJECT				





MODEL: \\MODEL\NAMES  
 FILE NAME: V045221 - CH 4 - CH 14 - CH 20 Capes Seal (Mason)\CADD\CADD Sheets\1932-CH4-PP.dgn

USER NAME = CThomas	DESIGNED - _____	REVISED - _____
	DRAWN - _____	REVISED - _____
PLOT SCALE = 199.99960000' / in.	CHECKED - _____	REVISED - _____
PLOT DATE = 1/20/2022	DATE - _____	REVISED - _____

**MASON COUNTY  
 CH 4, CH 14 & CH 20  
 PAVEMENT PRESERVATION**

**PLAN  
 COUNTY HIGHWAY 4**

SCALE: 1"=100'    SHEET 4    OF 5 SHEETS    STA. 183+00.00    TO STA. 243+00.00

F.A.S. RTE. 461 567	SECTION 20-00068-00-PP	COUNTY MASON	TOTAL SHEETS 28	SHEET NO. 10
CONTRACT NO. 93784			ILLINOIS FED. AID PROJECT	





MODEL: \\MODEL\NAMES  
 FILE NAME: V:\45922 - CH 4 - CH 14 - CH 20 Cape Seal (Mason)\CADD\GDD Sheets\4932-CH4-PP.dgn

USER NAME = CThomas	DESIGNED - _____	REVISED - _____
DRAWN - _____	REVISED - _____	REVISED - _____
PLOT SCALE = 199.99960000' / in.	CHECKED - _____	REVISED - _____
PLOT DATE = 1/20/2022	DATE - _____	REVISED - _____

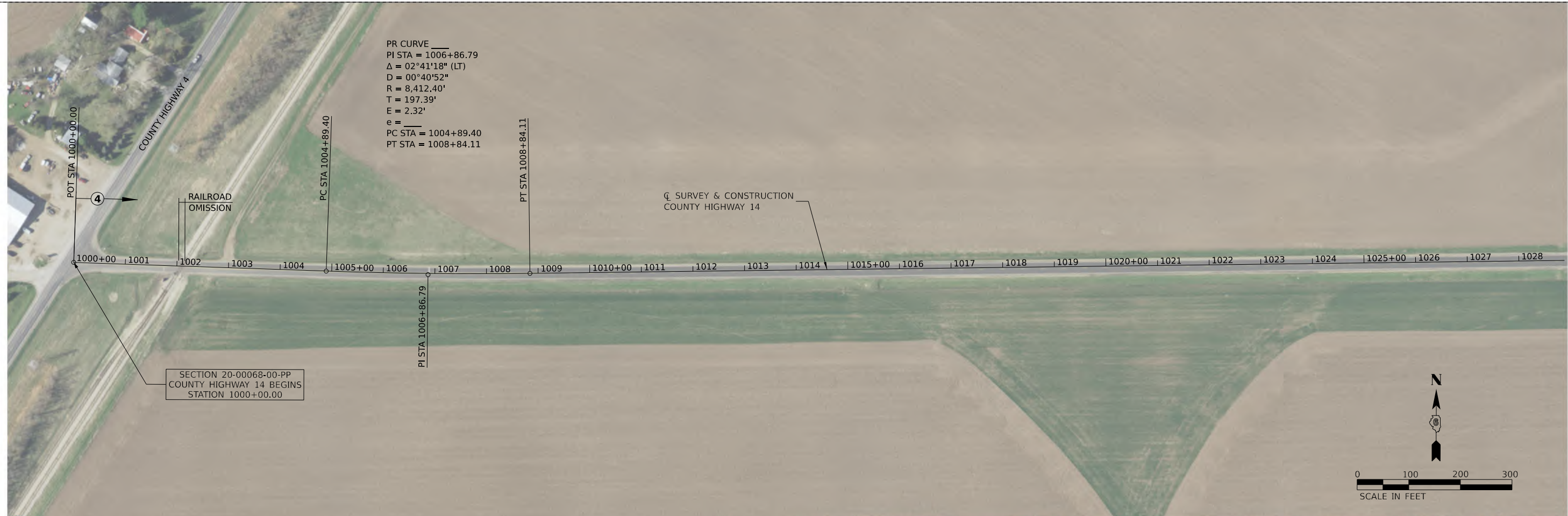
**MASON COUNTY  
 CH 4, CH 14 & CH 20  
 PAVEMENT PRESERVATION**

**PLAN  
 COUNTY HIGHWAY 4**

SCALE: 1"=100'    SHEET 5 OF 5 SHEETS    STA. 123+00.00 TO STA. 183+00.00

F.A.S. RTE. 461/567	SECTION 20-00068-00-PP	COUNTY MASON	TOTAL SHEETS 28	SHEET NO. 11
CONTRACT NO. 93784				
ILLINOIS FED. AID PROJECT				





MODEL: 41000.DWG  
 FILE NAME: V:\41000.DWG  
 CH 4, CH 14, CH 20  
 COUNTY HIGHWAY 14

USER NAME = CThomas	DESIGNED - _____	REVISED - _____
PLOT SCALE = 1/100'	DRAWN - _____	REVISED - _____
PLOT DATE = 1/20/2022	CHECKED - _____	REVISED - _____
	DATE - _____	REVISED - _____

**MASON COUNTY  
 CH 4, CH 14 & CH 20  
 PAVEMENT PRESERVATION**

**PLAN  
 COUNTY HIGHWAY 14**

SCALE: 1"=100' SHEET 1 OF 4 SHEETS STA. 1000+00.00 TO STA. 1059+00.00

F.A.S. RTE.	SECTION	COUNTY	TOTAL SHEETS	SHEET NO.
461 567	20-00068-00-PP	MASON	28	12
CONTRACT NO. 93784				
ILLINOIS FED. AID PROJECT				





MODEL: 41001.DWG  
 FILE NAME: V:\4522 - CH 4 - CH 14 - CH 20 Cape Seal (Mason)\CADD\CADD Sheets\4522-CH14-PP.dwg

USER NAME = CThomas	DESIGNED - Designed By	REVISED - Revised By1
	DRAWN - Drawn By	REVISED - Revised By2
PLOT SCALE = 199.99960000' / in.	CHECKED - Checked By	REVISED - Revised By3
PLOT DATE = 1/20/2022	DATE - Checked Date	REVISED - Revised By4

**MASON COUNTY  
 CH 4, CH 14 & CH 20  
 PAVEMENT PRESERVATION**

**PLAN  
 COUNTY HIGHWAY 14**

SCALE: 1"=100' SHEET 2 OF 4 SHEETS STA. 1059+00.00 TO STA. 1119+00.00

F.A.S. RTE.	SECTION	COUNTY	TOTAL SHEETS	SHEET NO.
461 567	20-00068-00-PP	MASON	28	13
CONTRACT NO. 93784				
ILLINOIS FED. AID PROJECT				





MODEL: 410001.DWG  
 FILE NAME: V04522 - CH 4 - CH 14 - CH 20 Capes Seal (Mason)\CADD\CADD Sheets\4922-CH14-PP.dwg

USER NAME = CThomas	DESIGNED - _____	REVISED - _____
	DRAWN - _____	REVISED - _____
PLOT SCALE = 199.99960000' / in.	CHECKED - _____	REVISED - _____
PLOT DATE = 1/20/2022	DATE - _____	REVISED - _____

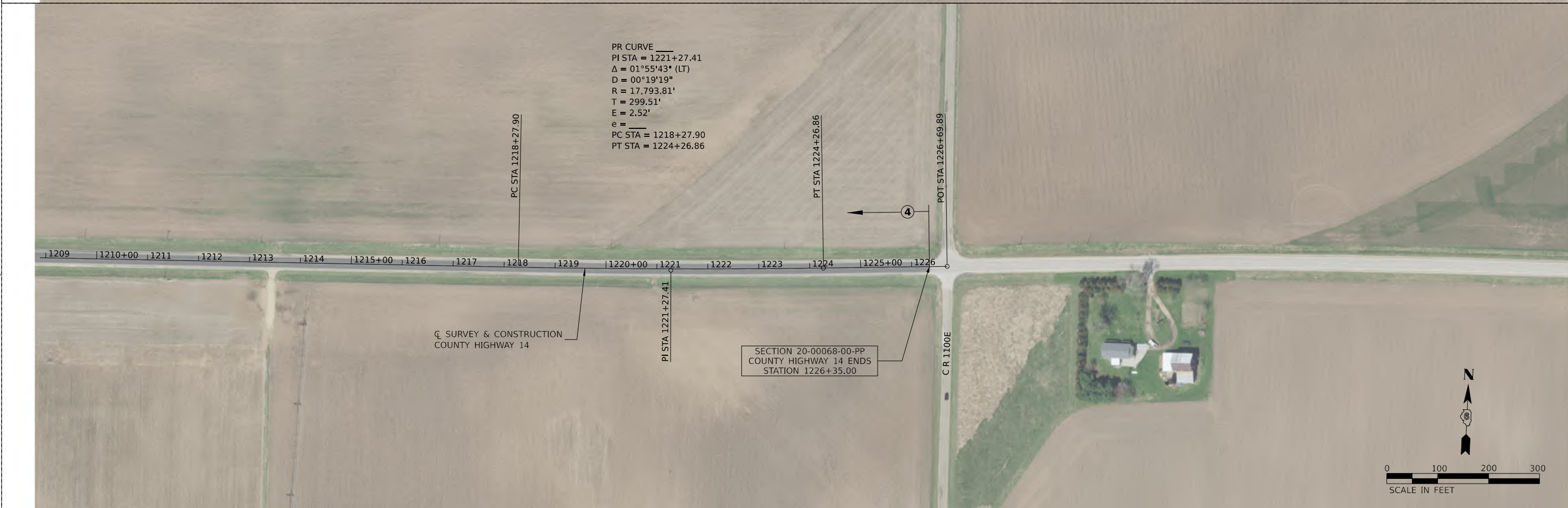
**MASON COUNTY  
 CH 4, CH 14 & CH 20  
 PAVEMENT PRESERVATION**

**PLAN  
 COUNTY HIGHWAY 14**

SCALE: 1"=100'    SHEET 3    OF 4    SHEETS    STA. 1000+00.00    TO STA. 1059+00.00

F.A.S. RTE.	SECTION	COUNTY	TOTAL SHEETS	SHEET NO.
461 567	20-00068-00-PP	MASON	28	14
CONTRACT NO. 93784				
ILLINOIS FED. AID PROJECT				





PR CURVE  
 PI STA = 1221+27.41  
 $\Delta = 01^{\circ}55'43"$  (LT)  
 $D = 00^{\circ}19'19"$   
 $R = 17,793.81'$   
 $T = 299.51'$   
 $E = 2.52'$   
 $e =$   
 PC STA = 1218+27.90  
 PT STA = 1224+26.86

MODEL: 41000.DWG  
 FILE NAME: V:\4522 - CH 4 - CH 14 - CH 20 Capes Seal (Mason)\CADD\2022\Sheets\4522-CH 4-PP.dwg

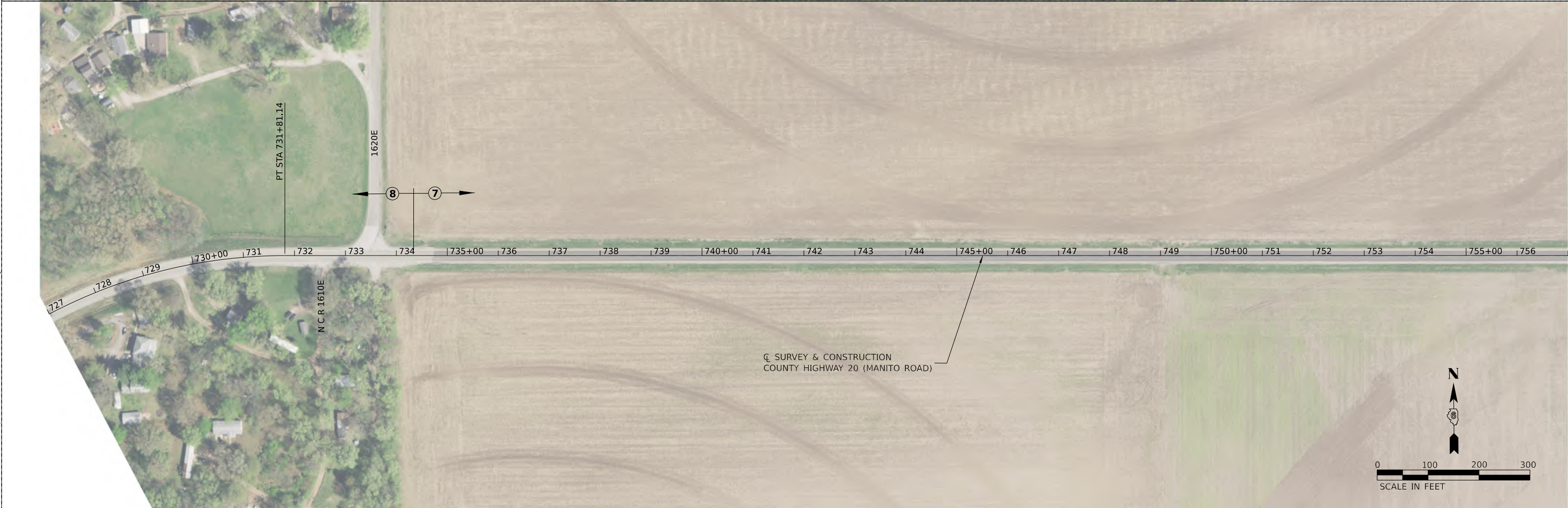
USER NAME = CThomas	DESIGNED - _____	REVISED - _____
	DRAWN - _____	REVISED - _____
PLOT SCALE = 199.99960000' / in.	CHECKED - _____	REVISED - _____
PLOT DATE = 1/20/2022	DATE - _____	REVISED - _____

**MASON COUNTY  
 CH 4, CH 14 & CH 20  
 PAVEMENT PRESERVATION**

<b>PLAN COUNTY HIGHWAY 14</b>			
SCALE: 1"=100'	SHEET 4	OF 4 SHEETS	STA. 1000+00.00 TO STA. 1059+00.00

F.A.S. RTE. 461 567	SECTION 20-00068-00-PP	COUNTY MASON	TOTAL SHEETS 28	SHEET NO. 15
CONTRACT NO. 93784				
ILLINOIS FED. AID PROJECT				





MODEL: 41001.DWG  
FILE NAME: V045222 - CH 4 - CH 14 - CH 20 Cape Seal (Mason)\CADD\2022\Sheets\93784-CH 4-PP.dwg

USER NAME = CThomas	DESIGNED - _____	REVISED - _____
PLOT SCALE = 199.999600000 ' / in.	DRAWN - _____	REVISED - _____
PLOT DATE = 1/20/2022	CHECKED - _____	REVISED - _____
	DATE - _____	REVISED - _____

**MASON COUNTY  
CH 4, CH 14 & CH 20  
PAVEMENT PRESERVATION**

**PLAN  
COUNTY HIGHWAY 20 (E MANITO ROAD)**

SCALE: 1"=100' SHEET 1 OF 13 SHEETS STA. 700+00.00 TO STA. 757+00.00

F.A.S. RTE.	SECTION	COUNTY	TOTAL SHEETS	SHEET NO.
461 567	20-00068-00-PP	MASON	28	16
CONTRACT NO. 93784				
ILLINOIS FED. AID PROJECT				





MODEL: 4100121.MXD  
 FILE NAME: V:\45221 - CH 4 - CH 14 - CH 20 Capes Seal (Mason)\CADD\CADD Sheets\4922-CH4-PP.dgn

USER NAME = CThomas	DESIGNED - _____	REVISED - _____
	DRAWN - _____	REVISED - _____
PLOT SCALE = 199.99960000' / in.	CHECKED - _____	REVISED - _____
PLOT DATE = 1/20/2022	DATE - _____	REVISED - _____

**MASON COUNTY**  
**CH 4, CH 14 & CH 20**  
**PAVEMENT PRESERVATION**

**PLAN**  
**COUNTY HIGHWAY 20 (E MANITO ROAD)**

SCALE: 1"=100'    SHEET 2 OF 13 SHEETS    STA. 757+00.00 TO STA. 817+00.00

F.A.S. RTE.	SECTION	COUNTY	TOTAL SHEETS	SHEET NO.
461 567	20-00068-00-PP	MASON	28	17
CONTRACT NO. 93784				
ILLINOIS FED. AID PROJECT				





MODEL: 410001.DWG  
 FILE NAME: V:\410001 - CH 4 - CH 14 - CH 20 Capes Seal (Mason)\CADD\2022\CH 4, CH 14, CH 20\410001.dwg

USER NAME = CThomas	DESIGNED - _____	REVISED - _____
	DRAWN - _____	REVISED - _____
PLOT SCALE = 1/199,999,600,000' / in.	CHECKED - _____	REVISED - _____
PLOT DATE = 1/20/2022	DATE - _____	REVISED - _____

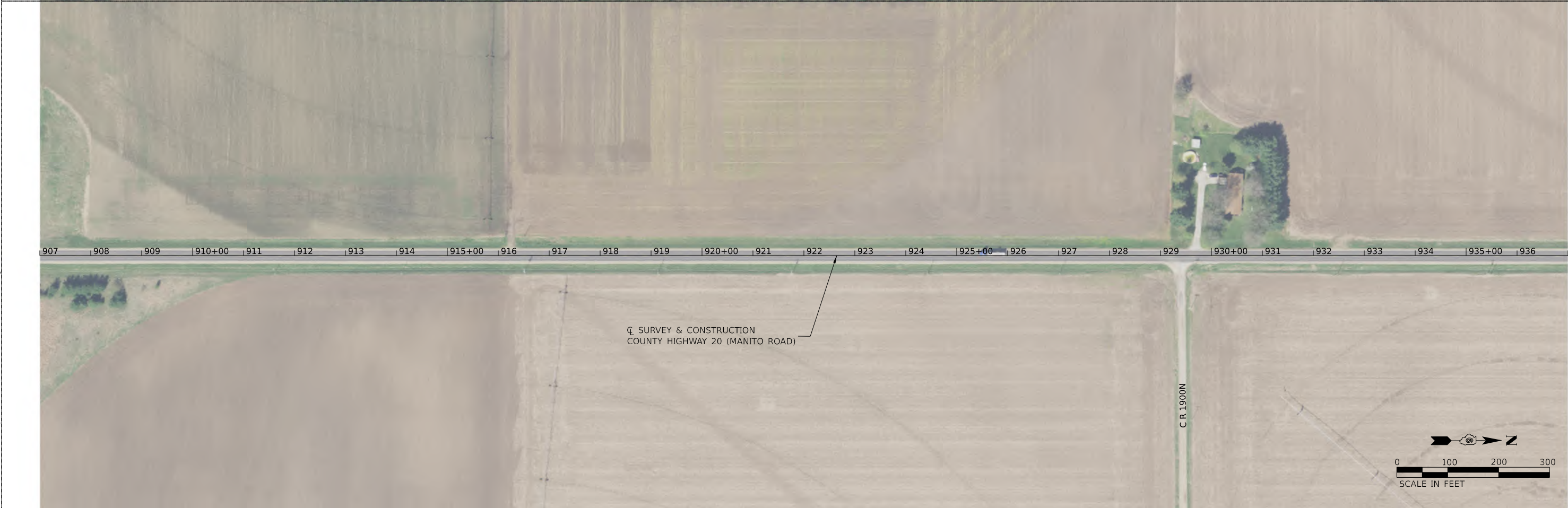
**MASON COUNTY  
 CH 4, CH 14 & CH 20  
 PAVEMENT PRESERVATION**

**PLAN  
 COUNTY HIGHWAY 20 (E MANITO ROAD)**

SCALE: 1"=100'    SHEET 3 OF 13 SHEETS    STA. 817+00.00 TO STA. 877+00.00

F.A.S. RTE.	SECTION	COUNTY	TOTAL SHEETS	SHEET NO.
461 567	20-00068-00-PP	MASON	28	18
CONTRACT NO. 93784				
ILLINOIS FED. AID PROJECT				





MODEL: 41001\NAME\...  
 FILE NAME: V:\45221 - CH 4 - CH 14 - CH 20 Capes Seal (Mason)\CADD\CADD Sheets\4922-CH 4-PP.dwg

USER NAME = CThomas	DESIGNED - _____	REVISED - _____
	DRAWN - _____	REVISED - _____
PLOT SCALE = 199.99960000' / in.	CHECKED - _____	REVISED - _____
PLOT DATE = 1/20/2022	DATE - _____	REVISED - _____

**MASON COUNTY**  
**CH 4, CH 14 & CH 20**  
**PAVEMENT PRESERVATION**

**PLAN**  
**COUNTY HIGHWAY 20 (E MANITO ROAD)**

SCALE: 1"=100'    SHEET 4 OF 13 SHEETS    STA. 877+00.00 TO STA. 937+00.00

F.A.S. RTE. 461/567	SECTION 20-00068-00-PP	COUNTY MASON	TOTAL SHEETS 28	SHEET NO. 19
CONTRACT NO. 93784				
ILLINOIS FED. AID PROJECT				





PR CURVE  
 PI STA = 131+60.56  
 $\Delta = 91^{\circ}12'38''$  (RT)  
 $D = 03^{\circ}16'27''$   
 $R = 1,750.00'$   
 $T = 1,787.37'$   
 $E = 751.44'$   
 $e =$   
 PC STA = 113+73.19  
 PT STA = 141+59.05

**MASON COUNTY  
 CH 4, CH 14 & CH 20  
 PAVEMENT PRESERVATION**

**PLAN  
 COUNTY HIGHWAY 20 (E MANITO ROAD)**  
 SCALE: 1"=100' SHEET 5 OF 13 SHEETS STA. 937+00.00 TO STA. 146+00.00

F.A.S. RTE. 461 567	SECTION 20-00068-00-PP	COUNTY MASON	TOTAL SHEETS 28	SHEET NO. 20
CONTRACT NO. 93784				
ILLINOIS FED. AID PROJECT				

USER NAME = CThomas	DESIGNED - _____	REVISED - _____
PLOT SCALE = 199.99960000' / in.	DRAWN - _____	REVISED - _____
PLOT DATE = 1/20/2022	CHECKED - _____	REVISED - _____
	DATE - _____	REVISED - _____

MODEL: 410001.DWG  
 FILE NAME: V045222 - CH 4 - CH 14 - CH 20 Capes Seal (Mason)\CADD\CADD Sheets\9372-CH 4-PP.dwg





MODEL: 41001.DWG  
 FILE NAME: V:\41922 - CH 4 - CH 14 - CH 20 Capes Seal (Mason)\CADD\2022\Sheets\41922-CH4-PP.dwg

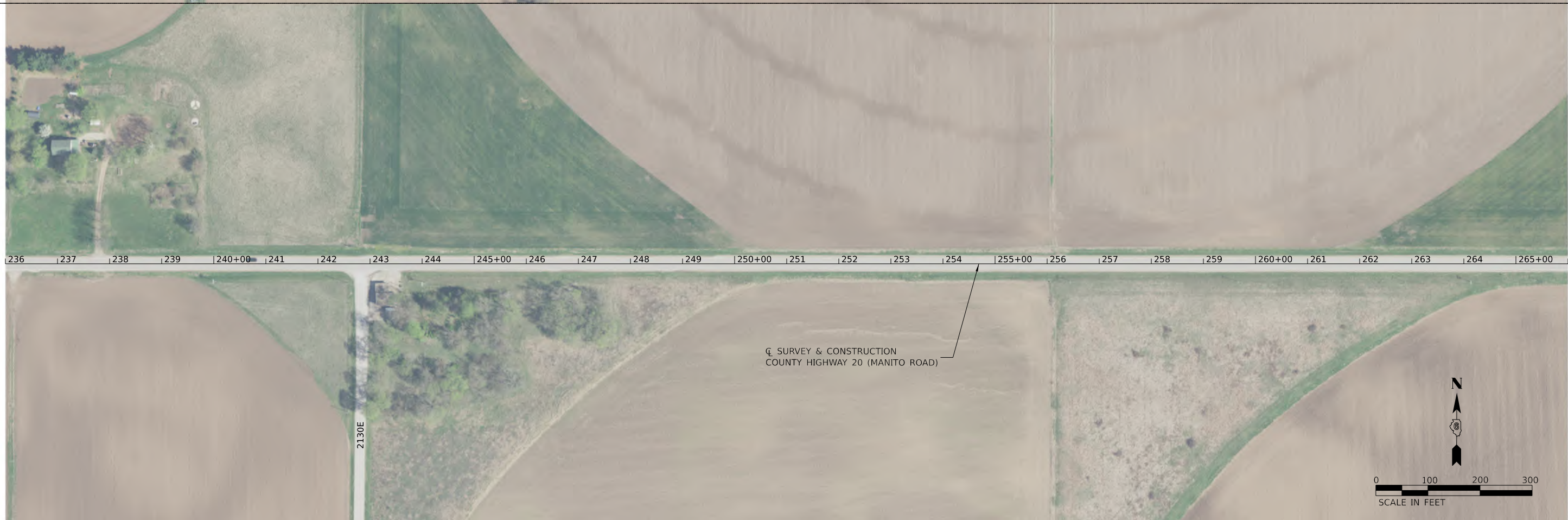
USER NAME = CThomas	DESIGNED - _____	REVISED - _____
	DRAWN - _____	REVISED - _____
PLOT SCALE = 199.99960000' / in.	CHECKED - _____	REVISED - _____
PLOT DATE = 1/20/2022	DATE - _____	REVISED - _____

**MASON COUNTY  
 CH 4, CH 14 & CH 20  
 PAVEMENT PRESERVATION**

**PLAN  
 COUNTY HIGHWAY 20 (E MANITO ROAD)**  
 SCALE: 1"=100'    SHEET 6    OF 13    SHEETS    STA. 146+00.00    TO STA. 206+00.00

F.A.S. RTE.	SECTION	COUNTY	TOTAL SHEETS	SHEET NO.
461 567	20-00068-00-PP	MASON	28	21
CONTRACT NO. 93784				
ILLINOIS    FED. AID PROJECT				





MODEL: 41001.DWG  
 FILE NAME: V:\41922 - CH 4 - CH 14 - CH 20 Capes Seal (Mason)\CADD\CADD Sheets\4932-CH 4-PP.dwg

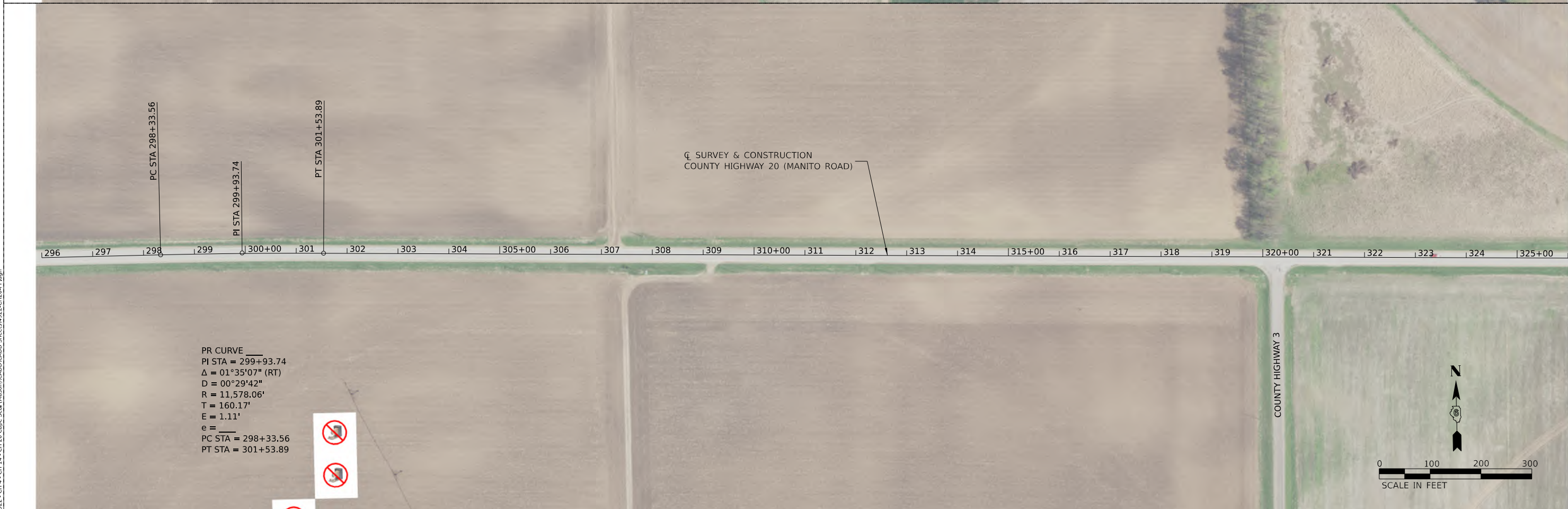
USER NAME = CThomas	DESIGNED - _____	REVISED - _____
	DRAWN - _____	REVISED - _____
PLOT SCALE = 199.99960000' / in.	CHECKED - _____	REVISED - _____
PLOT DATE = 1/20/2022	DATE - _____	REVISED - _____

**MASON COUNTY**  
**CH 4, CH 14 & CH 20**  
**PAVEMENT PRESERVATION**

<b>PLAN</b>			
<b>COUNTY HIGHWAY 20 (E MANITO ROAD)</b>			
SCALE: 1"=100'	SHEET 7	OF 13 SHEETS	STA. 206+00.00 TO STA. 266+00.00

F.A.S. RTE. 461 567	SECTION 20-00068-00-PP	COUNTY MASON	TOTAL SHEETS 28	SHEET NO. 22
CONTRACT NO. 93784				
ILLINOIS FED. AID PROJECT				





PR CURVE  
 PI STA = 299+93.74  
 $\Delta = 01^{\circ}35'07''$  (RT)  
 $D = 00^{\circ}29'42''$   
 $R = 11,578.06'$   
 $T = 160.17'$   
 $E = 1.11'$   
 $e =$   
 PC STA = 298+33.56  
 PT STA = 301+53.89

MODEL: 410001.DWG  
 FILE NAME: V:\45222 - CH 4 - CH 14 - CH 20 Capes Seal (Mason)\CADD\2022\Sheets\45222-CH4-PP.dwg

USER NAME = CThomas	DESIGNED - _____	REVISED - _____
PLOT SCALE = 1/8" = 100'	DRAWN - _____	REVISED - _____
PLOT DATE = 1/20/2022	CHECKED - _____	REVISED - _____
	DATE - _____	REVISED - _____

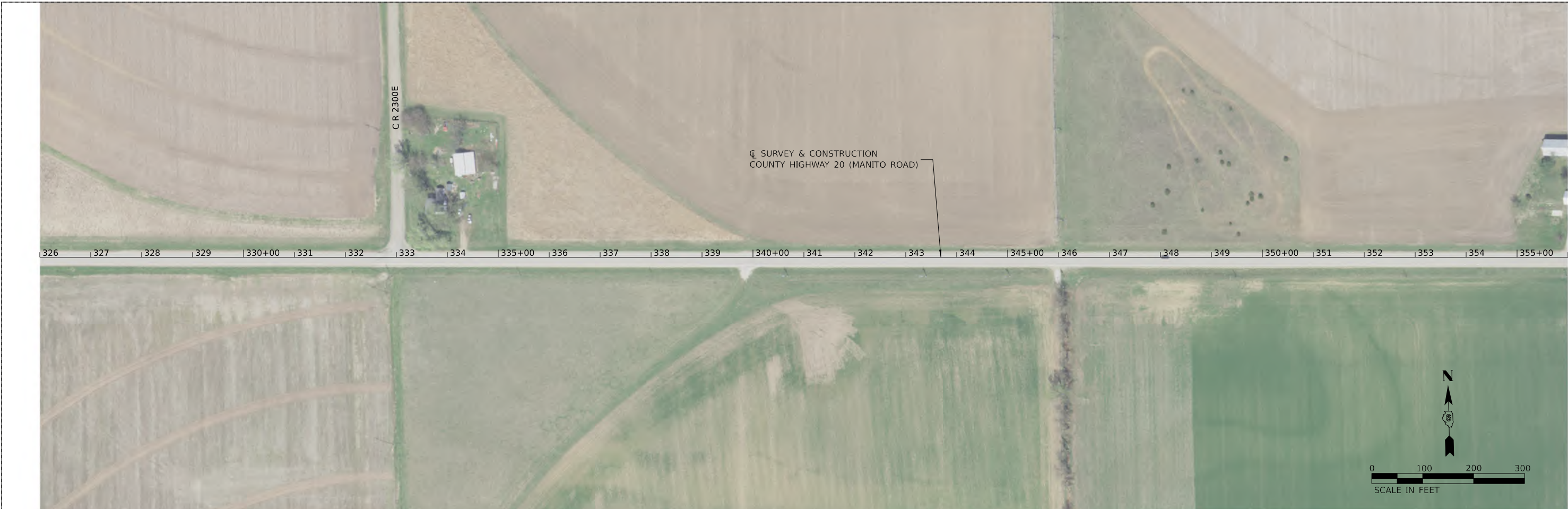
**MASON COUNTY  
 CH 4, CH 14 & CH 20  
 PAVEMENT PRESERVATION**

**PLAN  
 COUNTY HIGHWAY 20 (E MANITO ROAD)**

SCALE: 1"=100' SHEET 8 OF 13 SHEETS STA. 700+00.00 TO STA. 757+00.00

F.A.S. RTE. 461/567	SECTION 20-00068-00-PP	COUNTY MASON	TOTAL SHEETS 28	SHEET NO. 23
CONTRACT NO. 93784				
ILLINOIS FED. AID PROJECT				





MODEL: 41001\PLANES  
 FILE NAME: V:\4522 - CH 4 - CH 14 - CH 20 Capes Seal (Mason)\CADD\CADD Sheets\4922-CH4-PP.dgn

USER NAME = CThomas	DESIGNED - _____	REVISED - _____
	DRAWN - _____	REVISED - _____
PLOT SCALE = 199.99960000' / in.	CHECKED - _____	REVISED - _____
PLOT DATE = 1/20/2022	DATE - _____	REVISED - _____

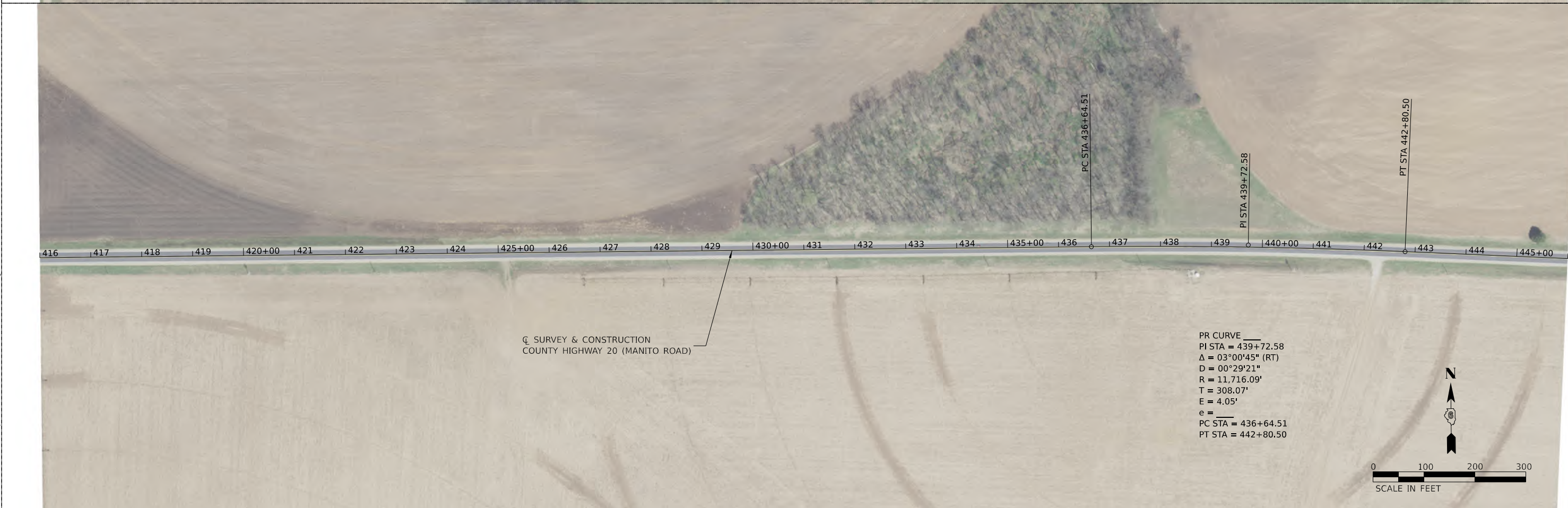
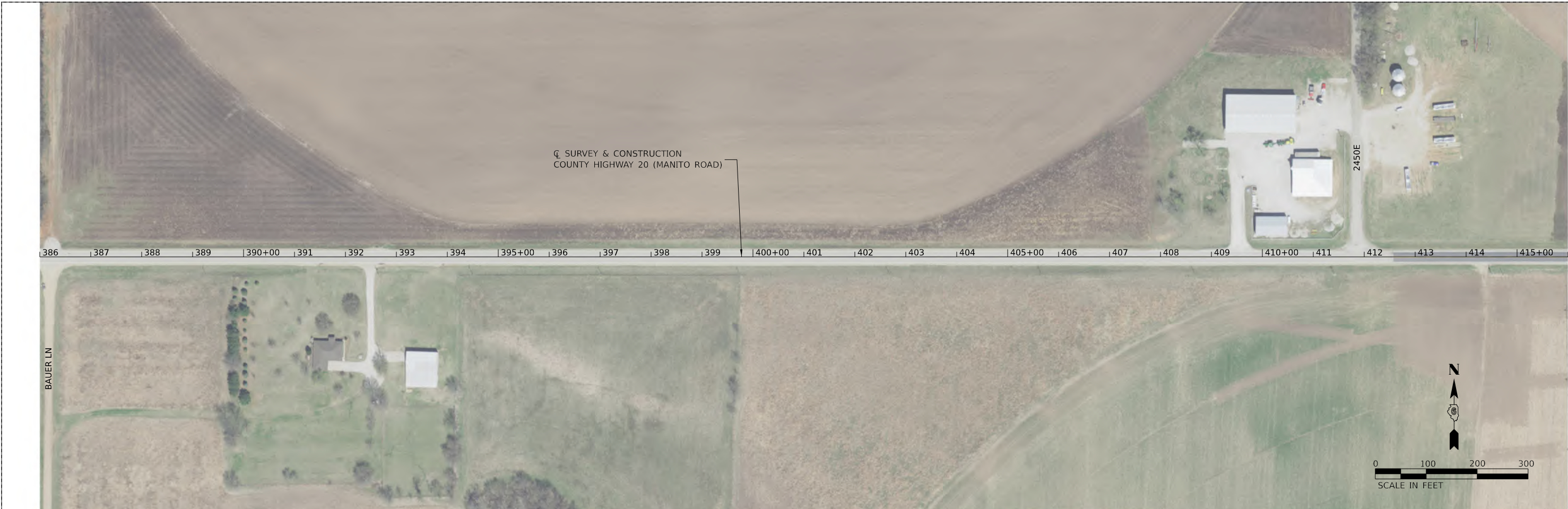
**MASON COUNTY**  
**CH 4, CH 14 & CH 20**  
**PAVEMENT PRESERVATION**

**PLAN**  
**COUNTY HIGHWAY 20 (E MANITO ROAD)**

SCALE: 1"=100'    SHEET 9 OF 13 SHEETS    STA. 326+00.00 TO STA. 386+00.00

F.A.S. RTE.	SECTION	COUNTY	TOTAL SHEETS	SHEET NO.
461 567	20-00068-00-PP	MASON	28	24
CONTRACT NO. 93784				
ILLINOIS FED. AID PROJECT				





MODEL: 41001.DWG  
 FILE NAME: V045221 - CH 4 - CH 14 - CH 20 Copied Seal (Mason)\\CADD\CADD Sheets\1932-CH 4-PP.dwg

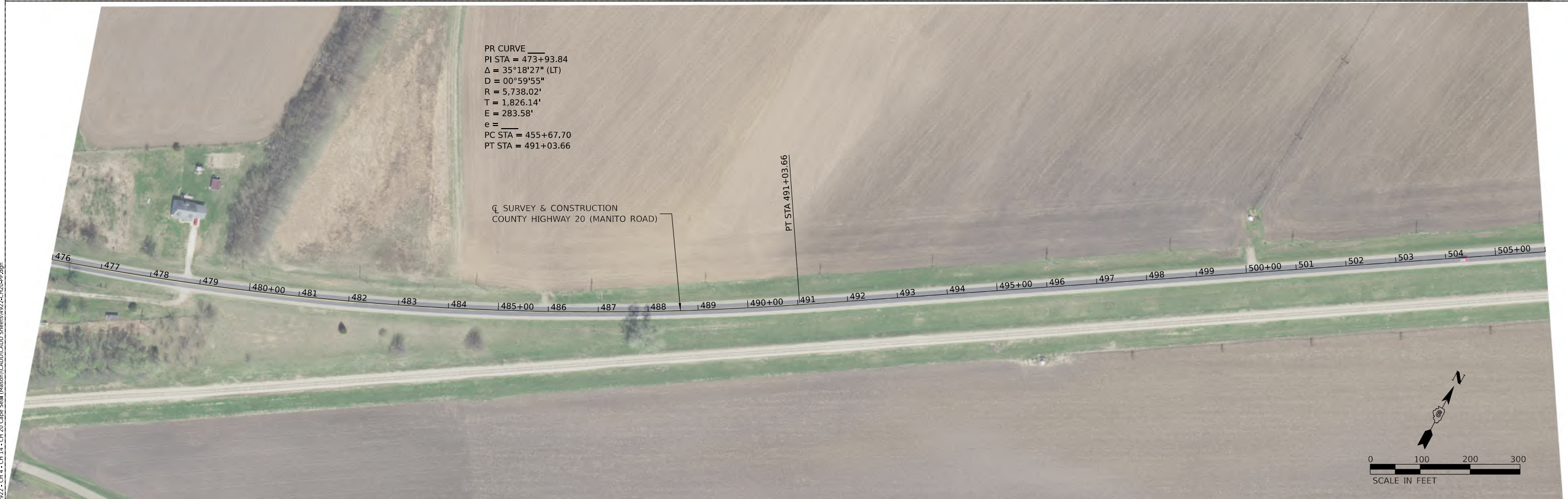
USER NAME = CThomas	DESIGNED - _____	REVISED - _____
	DRAWN - _____	REVISED - _____
PLOT SCALE = 199.99960000' / in.	CHECKED - _____	REVISED - _____
PLOT DATE = 1/20/2022	DATE - _____	REVISED - _____

**MASON COUNTY**  
**CH 4, CH 14 & CH 20**  
**PAVEMENT PRESERVATION**

<b>PLAN</b> <b>COUNTY HIGHWAY 20 (E MANITO ROAD)</b>			
SCALE: 1"=100'	SHEET 10	OF 13 SHEETS	STA. 386+00.00 TO STA. 446+00.00

F.A.S. RTE. 461 567	SECTION 20-00068-00-PP	COUNTY MASON	TOTAL SHEETS 28	SHEET NO. 25
CONTRACT NO. 93784				
ILLINOIS FED. AID PROJECT				





MODEL: 410001\MANIT\CH 4, CH 14, CH 20\Copy Seal (Mason)\CADD\CADD Sheets\93784-CH 4-PP.dwg  
 FILE NAME: V045922 - CH 4 - CH 14 - CH 20\Copy Seal (Mason)\CADD\CADD Sheets\93784-CH 4-PP.dwg

USER NAME = CThomas	DESIGNED - _____	REVISED - _____
	DRAWN - _____	REVISED - _____
PLOT SCALE = 1/199,999,600,000' / 1 in.	CHECKED - _____	REVISED - _____
PLOT DATE = 1/20/2022	DATE - _____	REVISED - _____

**MASON COUNTY  
 CH 4, CH 14 & CH 20  
 PAVEMENT PRESERVATION**

**PLAN  
 COUNTY HIGHWAY 20 (E MANITO ROAD)**

SCALE: 1"=100'    SHEET 11 OF 13 SHEETS    STA. 446+00.00 TO STA. 506+00.00

F.A.S. RTE.	SECTION	COUNTY	TOTAL SHEETS	SHEET NO.
461/567	20-00068-00-PP	MASON	28	26
CONTRACT NO. 93784				
ILLINOIS FED. AID PROJECT				





MODEL: \\MODEL\NAMES  
 FILE NAME: \\44522 - CH 4 - CH 14 - CH 20 Capes Seal (Mason)\CADD\CADD Sheets\4922-CH 4-PP.dgn

USER NAME = CThomas	DESIGNED - _____	REVISED - _____
	DRAWN - _____	REVISED - _____
PLOT SCALE = 199.99960000' / in.	CHECKED - _____	REVISED - _____
PLOT DATE = 1/20/2022	DATE - _____	REVISED - _____

**MASON COUNTY**  
**CH 4, CH 14 & CH 20**  
**PAVEMENT PRESERVATION**

<b>PLAN</b> <b>COUNTY HIGHWAY 20 (E MANITO ROAD)</b>	
SCALE: 1"=100'	SHEET 12 OF 13 SHEETS STA. 506+00.00 TO STA. 566+00.00

F.A.S. RTE. 461/567	SECTION 20-00068-00-PP	COUNTY MASON	TOTAL SHEETS 28	SHEET NO. 27
ILLINOIS FED. AID PROJECT			CONTRACT NO. 93784	





MODEL: 41001\PLANES  
FILE NAME: V045922 - CH 4 - CH 14 - CH 20 Capes Seal (Mason)\CADD\CADD Sheets\93784-CH4-PP.dwg

USER NAME = CThomas	DESIGNED -	REVISED -
PLOT SCALE = 199.99960000' / in.	DRAWN -	REVISED -
PLOT DATE = 1/20/2022	CHECKED -	REVISED -
	DATE -	REVISED -

**MASON COUNTY  
CH 4, CH 14 & CH 20  
PAVEMENT PRESERVATION**

<b>PLAN COUNTY HIGHWAY 20 (E MANITO ROAD)</b>			
SCALE: 1"=100'	SHEET 13	OF 13 SHEETS	STA. 566+00.00 TO STA. 622+04.08

F.A.S. RTE. 461 567	SECTION 20-00068-00-PP	COUNTY MASON	TOTAL SHEETS 28	SHEET NO. 28
ILLINOIS FED. AID PROJECT			CONTRACT NO. 93784	