

STATE OF ILLINOIS
DEPARTMENT OF TRANSPORTATION

F.A. RTE.	SECTION	COUNTY	TOTAL SHEETS	SHEET NO.
VAR.	D2 REFLECTOR REPL 22-26	VARIOUS	10	1
		ILLINOIS	CONTRACT NO. 46590	

PROPOSED
HIGHWAY PLANS

VARIOUS ROUTES
SECTION D-2 REFLECTOR REPL 22-26
VARIOUS COUNTIES

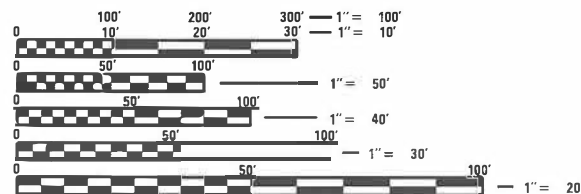
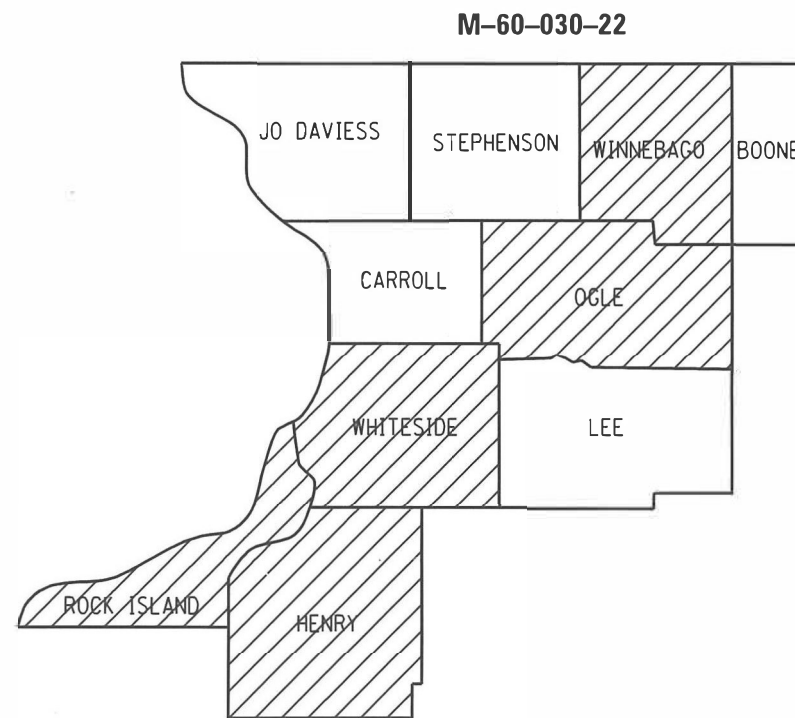
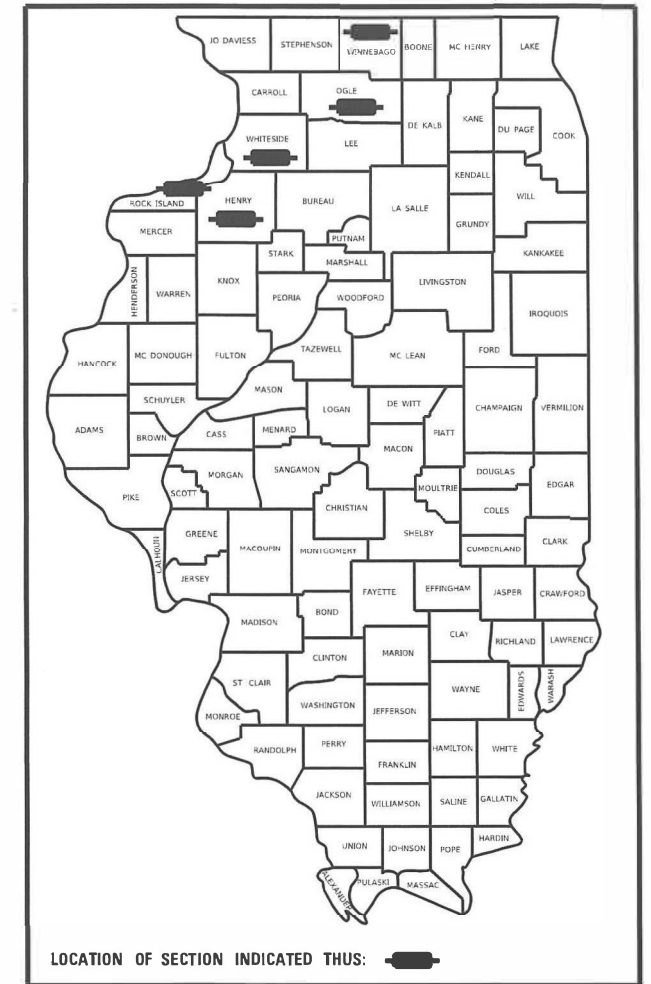
INDEX OF SHEETS:

COVER SHEET, SHEET No. 1

GENERAL NOTES, SHEET No. 2
STATE STANDARDS, SHEET No. 2

SUMMARY OF QUANTITIES, SHEET No. 3

LOCATIONS FOR REPLACEMENT REFLECTORS &
RAISED REFLECTIVE PAVEMENT MARKERS, SHEETS No. 4-10



FULL SIZE PLANS HAVE BEEN PREPARED USING STANDARD ENGINEERING SCALES. REDUCED SIZED PLANS WILL NOT CONFORM TO STANDARD SCALES. IN MAKING MEASUREMENTS ON REDUCED PLANS, THE ABOVE SCALES MAY BE USED.

J.U.L.I.E.
JOINT UTILITY LOCATION INFORMATION FOR EXCAVATION
1-800-892-0123
OR 811

PROJECT ENGINEER: SHERRY DITZLER (815) 284-5415
PROJECT MANAGER: KRISTIE NYDEREK (815) 284-5469

CONTRACT NO. 46590

STATE OF ILLINOIS
DEPARTMENT OF TRANSPORTATION

SUBMITTED January 14, 2022

REGIONAL ENGINEER

March 25, 2022

ENGINEER OF DESIGN AND ENVIRONMENT

March 2, 2022

DIRECTOR OF HIGHWAYS PROJECT IMPLEMENTATION

PRINTED BY THE AUTHORITY
OF THE STATE OF ILLINOIS

GENERAL NOTES

The Department may remove and not install markers in certain locations at the engineer's discretion.

The Department may install markers in certain locations that did not previously have markers at the engineer's discretion.

The locations of the repair areas shall be determined by the engineer.

The work site shall be left in a safe and orderly condition, filling any holes created by the end of the work day.

No material should be left on or near the roadway.

Removal of damaged materials will include loading, hauling, and disposal.

Any necessary traffic control will be provided by the contractor; appropriate standards are listed on Sheet No. 2.

Traffic control shall not be paid for as separate pay items, but shall be considered a part of the contract.

The Work on this contract is primarily Interstate work where TMA's are required.

A minimum of a 10' lane on ramps shall be maintained open at all times for traffic flow.

STATE STANDARDS

701101-05	OFF-RD OPERATIONS, MULTI-LANE, 15' to 24" FROM PAVEMENT EDGE
701426-09	LANE CLOSURE, MULTI-LANE, INTERMITTANT/MOVING OPER, FOR SPEEDS ≥ 45 MPH
701427-05	LANE CLOSURE, MULTI-LANE, INTERMITTANT/MOVING OPER, FOR SPEEDS < 40 MPH
701901-08	TRAFFIC CONTROL DEVICES
781001-04	TYPICAL APPLICATIONS RAISED REFLECTIVE PAVEMENT MARKERS

MODEL: Default
FILE NAME: STR-Corrections\Contracts for Letter\Bases\ Pavement Markers\Contract 46590 for 2022-2023\46590_pbas.dwg

USER NAME = ditzlersa PLOT SCALE = 102.9963' / in. PLOT DATE = Jan-25-2022 10:56:31 PM	DESIGNED - _____ DRAWN - _____ CHECKED - _____ DATE - _____	REVISED - _____ REVISED - _____ REVISED - _____ REVISED - _____	STATE OF ILLINOIS DEPARTMENT OF TRANSPORTATION	GENERAL NOTES & STATE STANDARDS	F.A. RTE. _____ VAR. D2 REFLECTOR REPL 22-26	SECTION _____ COUNTY VARIOUS	TOTAL SHEETS _____ SHEET NO. 2	CONTRACT NO. 46590 ILLINOIS FED. AID PROJECT
SCALE: _____ SHEET ___ OF ___ SHEETS STA. _____ TO STA. _____								

SUMMARY OF QUANTITIES

TOTALS	Estimated Milage	78100100 Replace Reflector Casting	78100300 Replace Reflector only
I-90/I-39 Winnebago Co.	2.4	475	905
I-39 Winnebago & Ogle Co.	21.5	1800	5695
I-88 Whiteside & Rock Island Co.	44.5	1910	5635
I-74 Henry & Rock Island Co.	20	1150	2295
I-80 Rock Island Co.	10	660	1590
I-80 Henry & Rock Island Co.	25.7	1050	2685
I-280 Henry & Rock Island Co.	17.3	770	1530

PAYCODE	ITEM DESCRIPTION	Unit	0021 Total Quantity	100% State Rural
78100100	Raised Reflector Pavement Marker	Each	7815	7815
78100300	Replacement Reflector	Each	20335	20335
78300200	Raised Reflective Pavement Marker Removal	Each	5800	5800

MODEL: D:\nir FILE NAME: S:\ITR\Contracts\Contracts for Lifting\Raised Pavement Markers\Contract_46590_for_2022-2023\46590_plans.dgn

I-90/I-39	Wisc State Line	to Rockton Rd	est RMP total	Color
	double every 80'	Miles	635	W
	3 lane section	2.4	635	W

	Ramp	Thru/Gore Edge	Color	M/B	LT Edge	Color	M/B	RT Edge	Color	M/B
IL 75	SB Exit 1	0			0			0		
IL 75	NB Exit 1 (CONC)	51	W	10	12	W	1	0		
Welcome Ctr	SB Exit (CONC)	12	W	1	12	W	1	0		
Rockton Rd	SB Exit 3 (CONC)	11	W	1	11	W	1	0		
Rockton Rd	NB Exit 3	0			0			0		

MODEL: D:\m\it FILE NAME: S:\ITR\Contracts\Contracts for Letting\Raised Pavement Markers\Contract_46590_for_2022-2023\46590_plans.dgn

USER NAME = ditzlersa	DESIGNED - _____	REVISED - _____
	DRAWN - _____	REVISED - _____
PLOT SCALE = 102.9963' / in.	CHECKED - _____	REVISED - _____
PLOT DATE = Jan-25-2022 10:56:44 PM	DATE - _____	REVISED - _____

**STATE OF ILLINOIS
DEPARTMENT OF TRANSPORTATION**

SUMMARY OF QUANTITIES

SCALE: _____ SHEET ____ OF ____ SHEETS STA. _____ TO STA. _____

F.A. RTE.	SECTION	COUNTY	TOTAL SHEETS	SHEET NO.
VAR.	D2 REFLECTOR REPL 22-26	VARIOUS		4
				CONTRACT NO. 46590
ILLINOIS FED. AID PROJECT				

I-39	Ogle Co Line	to US 20	est RMP total	Color
	double every 80'	Miles	2850	W
		21.5	2850	W

	Ramp	Thru/Gore Edge	Color	M/B	LT Edge	Color	M/B	RT Edge	Color	M/B	
I-88	NB Exit 97A	(HMA)	10	W	1	10	W	1	35	W	5
						21	Y	3			
I-88	SB Exit 97B	(HMA)	11	W	1	28	W	2	82	W	4
						41	Y	4			
I-88	NB Exit 97B	(HMA)	27	W	3	7	W	1	35	W	5
						46	Y	10			
I-88	SB Exit 97A	(HMA)	18	W	4	10	W	2	0		
						45	Y	10			

	Ramp	Thru/Gore Edge	Color	M/B	LT Edge	Color	M/B	RT Edge	Color	M/B	
IL 38	NB Exit 99	(HMA)	10	W	1	10	W	1	35	W	5
						21	Y	3			
IL 38	SB Exit 99	(HMA)	11	W	1	11	W	1	34	W	5
						20	Y	2			
IL 38	NB Entrance 99	(HMA)	0			0			106	W	15
	SB Entrance 99	(HMA)	0			6	W	1	104	W	15

	Ramp	Thru/Gore Edge	Color	M/B	LT Edge	Color	M/B	RT Edge	Color	M/B	
IL 64	NB Exit 104	(HMA)	9	W	1	9	W	2	36	W	6
						20	Y	3			
IL 64	SB Exit 104	(HMA)	10	W	1	10	W	1	35	W	4
						22	Y	2			

	Ramp	Thru/Gore Edge	Color	M/B	LT Edge	Color	M/B	RT Edge	Color	M/B	
IL 72	NB Exit 111	(HMA)	10	W	1	10	W	W	35	W	15
						28	Y	4			
IL 72	SB Exit 111	(HMA)	11	W	1	11	W	1	34	W	3
						20	Y	4			

	Ramp	Thru/Gore Edge	Color	M/B	LT Edge	Color	M/B	RT Edge	Color	M/B	
Baxter Rd	NB Exit 115	(HMA)	11	W	1	11	W	1	36	W	5
						17	Y	1			
Baxter Rd	SB Exit 115	(HMA)	12	W	1	12	W	1	56	W	10
						19	Y	3			

	Ramp	Thru/Gore Edge	Color	M/B	LT Edge	Color	M/B	RT Edge	Color	M/B	
US 20	NB I39 to NB I39*	(HMA)	0			101	W	10	0		
						14	W	0			
US 20	NB I39 to WB US20*	(HMA)	0			70	W	5	0		10
						17	Y	8	101	W	
US 20						11	Y	5	11	W	5
						18	W	0	0		
US 20	SB I39 to SB I39	(HMA)	0			0			39	W	0
						0					
US 20	EB US20 to SB I39	(HMA)	0			39	W	0	0		

* Started count at 8" solid white line
 ** On structure over Linden Rd
 *** On structure over US 20

	Ramp	Thru/Gore Edge	Color	M/B	LT Edge	Color	M/B	RT Edge	Color	M/B	
Harrison Ave	NB Exit 122A	(HMA)	8	W	1	8	W	1	0		
	SB Exit 122A	(HMA)	10	W	2	10	W	2	0		
Harrison Ave	NB Exit 122B	(HMA)	16	W	2	9	W	1	0		
	SB exit 122B	(HMA)	7	W	0	7	W	0	0		

MODEL: Default
 FILE NAME: S:\TR\Contracts\Contractors for Letting\Raised Pavement Markers\Contract_46590_for_2022-2023\46590_plans.dwg

USER NAME = ditzler	DESIGNED -	REVISED -
PLOT SCALE = 102.9963' / in.	DRAWN -	REVISED -
PLOT DATE = Jan-25-2022 10:56:54 PM	CHECKED -	REVISED -
	DATE -	REVISED -

**STATE OF ILLINOIS
 DEPARTMENT OF TRANSPORTATION**

SUMMARY OF QUANTITIES	
SCALE: _____	SHEET _____ OF _____ SHEETS STA. _____ TO STA. _____

F.A. RTE.	SECTION	COUNTY	TOTAL SHEETS	SHEET NO.
VAR.	D2 REFLECTOR REPL 22-26	VARIOUS		5
CONTRACT NO. 46590			ILLINOIS FED. AID PROJECT	

I-88	IL 92	to Tollway	est RMP total	Color
	single every 80'	Miles	3000	W
		44.5	3000	W

Ramp	Thru/Gore Edge	Color	M/B	LT Edge	Color	M/B	RT Edge	Color	M/B
EB Exit 1A (HMA)	11	W	1	7	W	1	17	W	1
				30	Y	3			
EB Exit 1B (HMA)	10	W	1	10	W	1	34	W	3
				16	Y	2			
WB Exit 1B (HMA)	13	W	1	13	W	1	34	W	1
				6	Y	0			
WB Exit 1B (HMA)	6	W	1	6	W	1	0		
				22	Y	2			
WB Exit 1A (HMA)	15	W	1	4	W	1	15	W	1
				27	Y	3			

Ramp	Thru/Gore Edge	Color	M/B	LT Edge	Color	M/B	RT Edge	Color	M/B
to OLD Rte 2 (Silvis Yd) EB Exit 2 (HMA)	10	W	1	10	W	1	18	W	1
				15	Y	1			
to OLD Rte 2 (Silvis Yd) WB Exit 2 (HMA)	10	W	1	10	W	1	33	W	3
				15	Y	1			

Ramp	Thru/Gore Edge	Color	M/B	LT Edge	Color	M/B	RT Edge	Color	M/B
38th Ave (Joslin) EB Exit 6 (HMA)	10	W	1	10	W	2	33	W	3
				17	Y	2			
39th Ave (Joslin) WB Exit 6 (HMA)	10	W	1	10	W	2	36	W	3
				16	Y	2			

Ramp	Thru/Gore Edge	Color	M/B	LT Edge	Color	M/B	RT Edge	Color	M/B
to OLD Rte 2 (Hillsdale) EB Exit 10 (HMA)	10	W	1	10	W	1	34	W	3
				15	Y	1			
to OLD Rte 2 (Hillsdale) WB Exit 10 (HMA)	10	W	1	10	W	1	33	W	3
				15	Y	1			

Ramp	Thru Lane Edge	Color	M/B	LT Edge	Color	M/B	RT Edge	Color	M/B
Albany Rd EB Exit 18 (HMA)	11	W	1	10	W	1	34	W	3
				15	Y	1			
Albany Rd WB Exit 18 (HMA)	11	W	1	11	W	1	34	W	3
				16	Y	2			

Ramp	Thru/Gore Edge	Color	M/B	LT Edge	Color	M/B	RT Edge	Color	M/B
IL 78 EB Exit 26 (HMA)	9	W	1	9	W	1	34	W	3
IL 78 WB Exit 26 (CONC)	10	W	5	10	W	5	35	W	12

Ramp	Thru/Gore Edge	Color	M/B	LT Edge	Color	M/B	RT Edge	Color	M/B
US 30 Connector EB Exit 36* (HMA)	9	W	1	10	W	1	60	W	6
				49	Y	5			
EB Ent. 36* (HMA)	0			3	W	0	74	W	7
				56	Y	6			
US 30 Connector WB Exit 36 (HMA)	10	W	2	10	W	2	60	W	10
				29	Y	3			
WB Ent. 36** (HMA)	0			11	Y	1	16	W	2
				5	W	1			
				7	W	1	11	W	1

Ramp	Thru/Gore Edge	Color	M/B	LT Edge	Color	M/B	RT Edge	Color	M/B
IL 40 EB Exit 41 (HMA)	8	W	1	8	W	2	30	W	10
				9	Y	2			
IL 40 WB Exit 41 (HMA)	9	W	2	10	W	5	32	W	16
				10	Y	4			

Ramp	Thru/Gore Edge	Color	M/B	LT Edge	Color	M/B	RT Edge	Color	M/B
US 30 EB Exit 44 (HMA)	10	W	1	9	W	1	31	W	3
				13	Y	1			
US 30 WB ramp tollways									

MODEL: Definit FILE NAME: SCTR_Contracts/Contracts for Left/Right Raised Pavement - Barzees/Contract 46590 for 2022-2023/46590_pbas.dgn

USER NAME = ditzlersa	DESIGNED - _____	REVISED - _____
	DRAWN - _____	REVISED - _____
PLOT SCALE = 102.9963' / in.	CHECKED - _____	REVISED - _____
PLOT DATE = Jan-25-2022 10:57:00 PM	DATE - _____	REVISED - _____

**STATE OF ILLINOIS
DEPARTMENT OF TRANSPORTATION**

SUMMARY OF QUANTITIES	
SCALE: _____	SHEET _____ OF _____ SHEETS STA. _____ TO STA. _____

F.A. RTE. VAR.	SECTION D2 REFLECTOR REPL 22-26	COUNTY VARIOUS	TOTAL SHEETS 6	SHEET NO. 6
ILLINOIS FED. AID PROJECT				CONTRACT NO. 46590

I-74	Big X	to Knox Co. Line	est RMP total	Color
	single every 80'	Miles	1350	W
		20	1350	W

Ramp		Thru/Gore Edge	Color	M/B	LT Edge	Color	M/B	RT Edge	Color	M/B
EB Exit 4A	(HMA)	8	W	4	9	W	5	13	W	5
					8	Y	8			
EB Exit 4B	(HMA)	4	W	1	4	W	1	7	W	1
					2	Y	2			
WB Exit 4A	(HMA)	5	W	1	5	W	1	6	W	5
					2	Y	1			
WB Exit 4B	(HMA)	10	W	1	10	W	1	13	W	5

Ramp		Thru/Gore Edge	Color	M/B	LT Edge	Color	M/B	RT Edge	Color	M/B
EB Exit 5A	(CONC)	11	W	2	11	W	2	19	W	9
	(CONC)				8	Y	2			
	(HMA)	5	W	1	5	W	1			
EB 74 to EB 74	(HMA)	4	W	1	4	W	1	0		
					18	Y	6			
WB Exit 5A	(HMA)	6	W	1	6	W	1	0		
					12	Y	12			
WB Exit 5B	(HMA)	17	W	7	8	W	2	0		
EB Exit 18A	(HMA)	6	W	2	6	W	2	0		
EB Exit 18B	(HMA)	16	W	6	10	W	5	0		
US 6 to 74 WB	(CONC)	6	W	1	6	W	1	24	W	12
					7	Y	2			
US 6 to 280 WB	(CONC)	4	W	1	4	W	1	0		
					7	Y	2			

Ramp		Thru/Gore Edge	Color	M/B	LT Edge	Color	M/B	RT Edge	Color	M/B
EB Exit	(CONC)	0			12	W	3	15	W	3
WB Exit	(CONC)	0			16	W	4	14	W	3

Ramp		Thru/Gore Edge	Color	M/B	LT Edge	Color	M/B	RT Edge	Color	M/B
EB 74 to WB 80	(HMA)	15	W	2	4	W	1	0		
EB 74 to 74 EB	(HMA)	11	W	1	11	W	3	32	W	25
WB 74 to WB 74	(CONC)	7	W	2	5	W	2	10	W	5
WB 74 to EB 80	(CONC)	9	W	2	8	W	4	33	W	10

Ramp		Thru/Gore Edge	Color	M/B	LT Edge	Color	M/B	RT Edge	Color	M/B
EB Exit 24	(HMA)	5	W	1	6	W	1	0		
WB Exit 24	(HMA)	9	W	1	9	W	1	0		

Ramp		Thru/Gore Edge	Color	M/B	LT Edge	Color	M/B	RT Edge	Color	M/B
EB Exit	(HMA)	13	W	0	13	W	0	44	W	0
					10	Y	0			
WB Exit	(HMA)	10	W	0	10	W	0	34	W	1
					11	Y	0			

Ramp		Thru/Gore Edge	Color	M/B	LT Edge	Color	M/B	RT Edge	Color	M/B
EB Exit 32	(HMA)	5	W	1	6	W	1	0		
WB Exit 32	(HMA)	9	W	1	9	W	1	0		

Omission: New I-74 in Moline - completed 2021 there are no RPM's on the ramps only on the mainline.

MODEL: D:\mvt\... FILE NAME: S:\TR\Contracts\Contract_46590... for 2022-2023\46590_pblans.dgn

USER NAME = ditzlersa	DESIGNED - _____	REVISED - _____	STATE OF ILLINOIS DEPARTMENT OF TRANSPORTATION	SUMMARY OF QUANTITIES			F.A. RTE.	SECTION	COUNTY	TOTAL SHEETS	SHEET NO.
PLOT SCALE = 102.9963' / in.	DRAWN - _____	REVISED - _____					VAR.	D2 REFLECTOR REPL 22-26	VARIOUS	7	
PLOT DATE = Jan-25-2022 10:57:05 PM	CHECKED - _____	REVISED - _____		SCALE: _____ SHEET _____ OF _____ SHEETS STA. _____ TO STA. _____			CONTRACT NO. 46590		ILLINOIS FED. AID PROJECT		
	DATE - _____	REVISED - _____									

I-80	Mississippi River	to Big X	est RMP total	Color
	single every 80'	Miles	700	W
		10	700	W

-9450 -17500
1970 370

	Ramp	Thru/Gore Edge	Color	M/B	LT Edge	Color	M/B	RT Edge	Color	M/B
IL 84	WB Exit 1 (HMA)	10	W	1	10	W	1	33	W	3
					16	Y	2			
IL 84	EB Exit 1 (CONC)	9	W	1	9	W	1	34	W	3
	(HMA)				27	Y	3			

	Ramp	Thru/Gore Edge	Color	M/B	LT Edge	Color	M/B	RT Edge	Color	M/B
SB Welcome Ctr	EB Exit Rest Area (CONC)	10	W	3	10	W	1	24	W	5
					3	Y	0			
NB Weigh Station	WB Exit Weigh (HMA)	5	W	0	5	W	0	27	W	3
					12	Y	2			
SB Weigh Station	EB Exit Weigh (HMA)	5	W	0	5	W	0	22	W	0
					11	Y	2			

	Ramp	Thru/Gore Edge	Color	M/B	LT Edge	Color	M/B	RT Edge	Color	M/B
I-88	EB Exit 4A (HMA)	11	W	1	11	W	1	36	W	3
					6	Y	0			
I-88	EB Exit 4B (HMA)	5	W	1	5	W	1	20	W	2
					7	Y	1			
IL 92	WB Exit 4B (HMA)	5	W	1	5	W	1	20	W	2
					7	Y	1			
IL 92	WB Exit 4A (HMA)	6	W	1	6	W	1	21	W	2
					7	Y	1			

	Ramp	Thru/Gore Edge	Color	M/B	LT Edge	Color	M/B	RT Edge	Color	M/B
Cleveland Rd	EB Exit 7 (HMA)	10	W	8	10	W	8	16	W	15
Cleveland Rd	WB Exit 7 (HMA)	10	W	10	10	W	10	15	W	12

	Ramp	Thru/Gore Edge	Color	M/B	LT Edge	Color	M/B	RT Edge	Color	M/B
US 6	EB Exit 9 (HMA)	11	W	1	11	W	1	33	W	3
					11	Y	1			
US 6	WB Exit 9 (HMA)	12	W	1	12	W	1	24	W	5
					12	Y	1			

	Ramp	Thru/Gore Edge	Color	M/B	LT Edge	Color	M/B	RT Edge	Color	M/B
I-74/I-80	EB 80 to WB 74 (HMA)	5	W	1	5	W	1	26	W	2
					10	Y	1			
	EB 80 to EB 80 (HMA)	6	W	1	6	W	2	14	W	10
					36	Y	18			
I-74/I-80	WB 80 to WB 80 (CONC)	15	W	1	11	W	1	17	W	2
	WB 80 to EB 74 (HMA)	16	W	1	7	W	1	0		

MODEL: Default
FILE NAME: S:\TR\Contracts\Contract 46590 for 2022-2023\46590.dwg
S:\TR\Contracts\Contract 46590 for 2022-2023\46590.dwg

USER NAME = ditzlersa	DESIGNED - _____	REVISED - _____
	DRAWN - _____	REVISED - _____
PLOT SCALE = 102.9963' / in.	CHECKED - _____	REVISED - _____
PLOT DATE = Jan-25-2022 10:57:15 PM	DATE - _____	REVISED - _____

**STATE OF ILLINOIS
DEPARTMENT OF TRANSPORTATION**

SUMMARY OF QUANTITIES	
SCALE: _____	SHEET _____ OF _____ SHEETS STA. _____ TO STA. _____

F.A. RTE. _____	SECTION _____	COUNTY _____	TOTAL SHEETS _____	SHEET NO. _____
VAR. _____	D2 REFLECTOR REPL 22-26	VARIOUS		8
ILLINOIS FED. AID PROJECT			CONTRACT NO. 46590	

I-80	Big X	to Bureau Co. Line	est RMP total	Color
	single every 80'	Miles	1700	W
		25.7	1700	W

	Ramp	Thru/Gore Edge	Color	M/B	LT Edge	Color	M/B	RT Edge	Color	M/B	
IL 82	EB Exit 19	(HMA)	21	W	2	5	W	1	15	W	5
						9	Y	6			
IL 82	WB Exit 19	(HMA)	26	W	1	6	W	1	16	W	1
						7	Y	1			

	Ramp	Thru/Gore Edge	Color	M/B	LT Edge	Color	M/B	RT Edge	Color	M/B	
State St./2050E (Atkinson)	EB Exit 27	(HMA)	11	W	1	11	W	1	37	W	7
						13	Y	1			
State St./2050E (Atkinson)	WB Exit 27	(HMA)	10	W	1	10	W	0	33	W	0
						12	Y	1			

	Ramp	Thru/Gore Edge	Color	M/B	LT Edge	Color	M/B	RT Edge	Color	M/B	
IL 78	EB Exit 33	(HMA)	5	W	0	5	W	0	22	W	0
						11	Y	2			
IL 78	WB Exit 33	(HMA)	5	W	0	5	W	0	27	W	3
						12	Y	2			

MODEL: Default
FILE NAME: S:\TR_Contracts\Contracts for Letting\Baised Pavement Markets\Contract_46590_for_2022-2023\46590_plans.dgn

USER NAME = ditzlersa	DESIGNED - _____	REVISED - _____
PLOT SCALE = 102.9963' / in.	DRAWN - _____	REVISED - _____
PLOT DATE = Jan-25-2022 10:57:19 PM	CHECKED - _____	REVISED - _____
	DATE - _____	REVISED - _____

**STATE OF ILLINOIS
DEPARTMENT OF TRANSPORTATION**

SUMMARY OF QUANTITIES	
SCALE: _____	SHEET _____ OF _____ SHEETS STA. _____ TO STA. _____

F.A. RTE.	SECTION	COUNTY	TOTAL SHEETS	SHEET NO.
VAR.	DZ REFLECTOR REPL 22-26	VARIOUS		9
CONTRACT NO. 46590			ILLINOIS FED. AID PROJECT	

Route	From	To	est RMP total	Color
I-280	Mississippi River	to Big X		
	single every 80'	Miles	1150	W
		17.3	1150	W

Omission for I-280 and IL 92 interchange as the I-280 bridge project is currently ongoing they will be resurfacing these ramps in the near future (2022-2023).

MODEL: Default
FILE NAME: S:\ITC\Contracts\Contracts for Letting\Based Pavement_Markets\Contract_46590_for_2022-2023\46590_ibans.dgn

USER NAME = ditzlersa	DESIGNED - _____	REVISED - _____
	DRAWN - _____	REVISED - _____
PLOT SCALE = 102.9963' / in.	CHECKED - _____	REVISED - _____
PLOT DATE = Jan-25-2022 10:57:25 PM	DATE - _____	REVISED - _____

**STATE OF ILLINOIS
DEPARTMENT OF TRANSPORTATION**

SUMMARY OF QUANTITIES	
SCALE: _____	SHEET _____ OF _____ SHEETS STA. _____ TO STA. _____

F.A. RTE.	SECTION	COUNTY	TOTAL SHEETS	SHEET NO.
VAR.	D2 REFLECTOR REPL 22-26	VARIOUS		10
			CONTRACT NO. 46590	
ILLINOIS FED. AID PROJECT				