

INDEX OF SHEETS

1	COVER SHEET
2	GENERAL NOTES & STANDARDS
3 - 8	SUMMARY OF QUANTITIES
9 - 10	TYPICAL SECTIONS
11	ALIGNMENT
12	TIES, CONTROL POINT & BENCHMARKS
13-15	REMOVAL PLAN
16	I-80 REMOVAL PLAN
17 - 20	SHARED USE PATH- PLAN & PROFILE
21	I-80 ROADWAY PLAN
22	TRAFFIC CONTROL AND DETOUR NOTES
23	STAGE 1 CONSTRUCTION TRAFFIC CONTROL
24	STAGE 2 CONSTRUCTION TRAFFIC CONTROL
25	LOCAL DRIVEWAY TRAFFIC CONTROL
26	ROAD CLOSURE AND DETOUR
27 - 29	EROSION CONTROL PLAN
30 - 33	PAVEMENT MARKING & SIGNING PLAN
34	ROADWAY CRASHWALL DETAILS
35	PCC CONNECTOR DETAIL
36 - 39	ADA DETAILS
40 - 46	DRAINAGE PLANS
47 - 62	INTERCONNECT PLANS
63 - 100	STRUCTURAL PLANS
101 - 109	DISTRICT 1 STANDARD DETAILS
110 - 133	CROSS SECTIONS

HIGHWAY STANDARDS

000001-08	STANDARD SYMBOLS, ABBREVIATIONS AND PATTERNS
001006	DECIMAL OF AN INCH AND OF A FOOT
280001-07	TEMPORARY EROSION CONTROL SYSTEMS
420401-13	PAVEMENT CONNECTOR (PCC) FOR BRIDGE APPROACH SLAB
424001-11	PERPENDICULAR CURB RAMPS FOR SIDEWALKS
515001-04	NAME PLATE FOR BRIDGES
542001-06	CONCRETE END SECTIONS FOR PIPE CULVERTS 15" THRU 84" DIA.
601001-05	PIPE UNDERDRAINS
630001-12	STEEL PLATE BEAM GUARDRAIL
630116	BACK SIDE PROTECTION OF GUARDRAIL
630301-09	SHOULDER WIDENING FOR TYPE 1 (SPECIAL) GUARDRAIL TERMINALS
631031-17	TRAFFIC BARRIER TERMINAL, TYPE 6
637006-05	CONCRETE BARRIER, DOUBLE FACE, 44 in. HEIGHT
664001-02	CHAIN LINK FENCE
701001-02	OFF-RD OPERATIONS, 2L, 2W, MORE THAN 15' AWAY
701006-05	OFF-RD OPERATIONS, 2L, 2W, 15' TO 24" FROM PAVEMENT EDGE
701301-04	LANE CLOSURE, 2L, 2W, SHORT TIME OPERATIONS
701311-03	LANE CLOSURE 2L, 2W MOVING OPERATIONS - DAY ONLY
701400-10	APPROACH TO LANE CLOSURE, FREEWAY/EXPRESSWAY
701401-12	LANE CLOSURE, FREEWAY/EXPRESSWAY
701428-01	TRAFFIC CONTROL SETUP AND REMOVAL FREEWAY/EXPRESSWAY
701446-11	TWO LANE CLOSURE, FREEWAY / EXPRESSWAY
701801-06	SIDEWALK, CORNER OR CROSSWALK CLOSURE
701901-08	TRAFFIC CONTROL DEVICES
704001-08	TEMPORARY CONCRETE BARRIER
720001-01	SIGN PANEL MOUNTING DETAILS
720006-04	SIGN PANEL ERECTION DETAILS
720011-01	METAL POSTS FOR SIGNS, MARKERS & DELINEATORS
780001-05	TYPICAL PAVEMENT MARKINGS
781001-04	TYPICAL APPLICATIONS RAISED REFLECTIVE PAVEMENT MARKERS
782006-01	GUARDRAIL AND BARRIER WALL REFLECTOR MOUNTING DETAILS

DISTRICT ONE STANDARD DETAILS

BD-01	DRIVEWAY DETAILS
BD-02	DRIVEWAY DETAILS
BD-03	OUTLET FOR CONCRETE CURB AND GUTTER
BD-12	MANHOLE WITH RESTRICTOR PLATE
BD-32	BUTT JOINT AND HMA TAPER DETAILS
BD-34	DEPRESSED CURB & GUTTER
BD-51	BENCHING DETAILS FOR ENBANKMENT WIDENING
TC-08	ENTRANCE AND EXIT RAMP CLOSURE DETAILS
TC-09	TRAFFIC CONTROL DETAILS FOR FREEWAY SINGLE & MULTI-LANE WEAVE
TC-10	TRAFFIC CONTROL AND PROTECTION FOR SIDE ROADS, INTERSECTIONS, AND DRIVEWAYS
TC-11	RAISED REFLECTIVE PAVEMENT MARKERS (SNOW PLOW RESISTANT)
TC-13	DISTRICT ONE TYPICAL MARKINGS
TC-14	TRAFFIC CONTROL AND PROTECTION AT LEFT TURN BAYS (TO REMAIN OPEN TO TRAFFIC)
TC-17	PARTIAL RAMP & SHOULDER CLOSURE DETAILS
TC-18	SIGNING FOR FLAGGING OPERATIONS AT WORK ZONE OPENINGS
TC-21	DETOUR SIGNING FOR CLOSING STATE HIGHWAYS

GENERAL NOTES

ALL CONSTRUCTION WORK SHALL BE PERFORMED IN ACCORDANCE WITH THE APPLICABLE SECTIONS OF THE ILLINOIS DEPARTMENT OF TRANSPORTATION "STANDARD SPECIFICATIONS FOR ROAD AND BRIDGE CONSTRUCTION" ADOPTED JANUARY 1, 2022, SUPPLEMENTAL SPECIFICATIONS AND RECURRING SPECIAL PROVISIONS AND SPECIAL PROVISIONS OF THE BUREAU OF DESIGN AND ENVIRONMENT. ANY REFERENCE TO A STANDARD IN THESE PLANS SHALL BE INTERPRETED TO MEAN JANUARY 1, 2022 EDITION.

THE CONTRACTOR SHALL CONTACT J.U.L.I.E. AT LEAST 48 HOURS PRIOR TO EXCAVATION TO DETERMINE WHICH UTILITIES ARE IN THE AREA.

THE CONTRACTOR SHALL BE RESPONSIBLE FOR COLLECTING AND MAINTAINING AN ELECTRONIC LOG OF ALL STAKEOUT SURVEY THAT IS PERFORMED ON THE JOB, EITHER BY HIM/HER OR ANY SUB-CONTRACTOR PERFORMING THE STAKEOUT. UPON REQUEST, ALL LOGS SHALL BE SUBMITTED TO THE DEPARTMENT. NO ADDITIONAL COMPENSATION WILL BE ALLOWED FOR THIS WORK, BUT SHALL BE CONSIDERED INCIDENTAL TO THE CONTRACT.

THE CONTRACTOR SHALL REFER TO THE SPECIAL PROVISION FOR STRUCTURAL ASSESSMENT REPORTS FOR CONTRACTOR'S MEANS AND METHODS WHEN FORMULATING A WORK PLAN THAT INVOLVES LOADS ON THE DECK.

THE CONTRACTOR IS TO REFER TO THE SPECIAL PROVISION FOR SAW CUTTING CONTRACTION JOINTS IN P.C.C. SIDEWALKS. NO TOOLED JOINTS WILL BE ALLOWED.

IT SHALL BE THE CONTRACTORS RESPONSIBILITY TO VERIFY ALL DIMENSIONS AND CONDITIONS EXISTING IN THE FIELD PRIOR TO CONSTRUCTION AND ORDERING OF MATERIALS.

THE THICKNESS OF HMA SHOWN ON THE PLANS IS THE NOMINAL THICKNESS, DEVIATIONS FROM THE NOMINAL THICKNESS WILL BE PERMITTED WHEN SUCH DEVIATIONS OCCUR DUE TO IRREGULARITIES IN THE EXISTING SURFACE OR BASE ON WHICH THE HMA IS PLACED.

SEEDING WILL NOT BE PERMITTED AT ANY TIME WHEN THE GROUND IS FROZEN, WET, OR IN AN UNTILLABLE CONDITION, LOCATIONS TO BE SEEDED WILL BE DETERMINED BY THE ENGINEER.

THE CONTRACTOR SHALL CONTACT THE ROADSIDE DEVELOPMENT UNIT AT (847) 705-4171 AT LEAST 2 WEEKS PRIOR TO ANY FORESTRY WORK TO IDENTIFY AND MARK TREES TO SAVE WITHING TREE REMOVAL AREAS.

BEFORE BEGINNING ANY WORK, THE CONTRACTOR SHALL RETAIN AND RECORD FOR FUTURE REFERENCE, ALL EXISTING PAVEMENT MARKING LINES AND RAISED REFLECTIVE PAVEMENT MARKERS THAT CONFLICT WITH TEMPORARY MARKINGS, IN ORDER THAT THESE LOCATIONS CAN BE RE-ESTABLISHED FOR PROPOSED STRIPING AT THE COMPLETION OF THIS CONTRACT. EXACT LOCATIONS OF ALL PROPOSED PAVEMENT MARKINGS SHALL BE DIRECTED BY THE RESIDENT ENGINEER.

THE CONTACTOR WILL NOT BE ABLE TO SET UP A YARD OR FIELD OFFICE ON STATE PROPERTY WITHOUT WRITTEN PERMISSION FROM THE DEPARTMENT.

ALL DAMAGE TO EXISTING MARKINGS OR RAISED REFLECTIVE PAVEMENT MARKERS OUTSIDE THE REMOVAL LINE SHOWN ON THE PLANS SHALL BE REPLACED AT NO ADDITIONAL COST TO THE DEPARTMENT.

THE CONTRACTOR SHALL MAINTAIN ALL ROADWAYS OPEN TO TRAFFICE AS SHOWN ON THE MAINTENANCE OF TRAFFIC PLANS.

GENERAL NOTES

THE CONTRACTOR SHALL USE CARE NEAR ANY AND ALL EXISTING ITEMS THAT WILL NOT BE REMOVED. ANY DAMAGE DONE TO EXISTING ITEMS BY THE CONTRACTOR SHALL BE REPAIRED OR REPLACED TO THE SATISFACTION OF THE ENGINEER AT THE CONTRACTOR'S OWN EXPENSE.

DO NOT SCALE PLANS FOR CONSTRUCTION DIMENSIONS.

DURING CONSTRUCTION OPERATIONS, IF ANY LOOSE MATERIAL IS DEPOSITED IN THE FLOW LINE OF DRAINAGE STRUCTURES SUCH THAT THE NATURAL FLOW OF WATER IS OBSTRUCTED, THE MATERIAL SHALL BE REMOVED AT THE CLOSE OF EACH WORKDAY. AT THE CONCLUSION OF CONSTRUCTION OPERATIONS, ALL UTILITY STRUCTURES SHALL BE FREE FROM DUST AND DEBRIS. THE WORK SPECIFIED ABOVE WILL NOT BE PAID SEPARATELY BUT SHALL BE INCLUDED IN THE COST OF CONTRACT.

PERMANENT PAVEMENT MARKINGS SHALL BE AS SPECIFIED IN THE PLANS AND SHALL BE PLACED IN ACCORDANCE WITH THE 'DISTRICT ONE TYPICAL PAVEMENT MARKING' DETAILS. (TC-13, DISTRICT ONE TYPICAL PAVEMENT MARKINGS).

THE SUBGRADE STABILITY SHALL BE VERIFIED BY PROOF ROLLING WITH A FULL LOADED TANDEM AXLE TRUCK.

IF ANY STAGE CHANGES REQUIRING THE STOPPING AND/OR THE PACING OF TRAFFIC SHALL TAKE PLACE DURING THE ALLOWABLE HOURS FOR FULL EXPRESSWAY CLOSURES AND SHALL BE APPROVED BY THE DEPARTMENT. THE CONTRACTOR SHALL NOTIFY THE DISTRICT ONE EXPRESSWAY TRAFFIC CONTROL SUPERVISOR AT LEAST 3 WORKING DAYS (WEEKENDS AND HOLIDAYS DO NOT COUNT INTO THIS 72 HOURS NOTIFICATION) IN ADVANCE OF ANY PROPOSED STAGE CHANGE.

A MAINTENANCE OF TRAFFIC PLAN SHALL BE SUBMITTED TO THE DISTRICT ONE EXPRESSWAY TRAFFIC CONTROL SUPERVISOR 14 DAYS IN ADVANCE OF ANY STAGE CHANGES OR FULL EXPRESSWAY CLOSURES. THE MAINTENANCE OF TRAFFIC PLAN SHALL INCLUDE, BUT NOT BE LIMITED TO: LANE AND RAMP CLOSURES, EXISTING GEOMETRICS, AND EQUIPMENT AND MATERIAL LOCATION.

THE STRIPPED TOPSOIL SHALL BE STOCKPILED, SORTED, AND REUSED FOR THE PROPOSED LANDSCAPING IMPROVEMENTS, THE ACTUAL REMOVAL DEPTH AND QUANTITY OF TOPSOIL REMOVAL SHALL BE VERIFIED IN THE FIELD.

BACKFILLING STORM SEWER CONSTRUCTED UNDER THE ROADWAY SPECIFIED UNDER ART. 550.071b. c) OF THE SSRBC WILL NOT BE ALLOWED.

COMMITMENTS:

NONE

ILLINOIS DEPARTMENT OF TRANSPORTATION

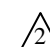
1. THE CONTRACTOR SHALL CONTACT THE ARTERIAL TRAFFIC CONTROL SUPERVISOR, KALPANA KANNAN-HOSADURGA AND EXPRESSWAY TRAFFIC CONTROL SUPERVISOR, CARLOS MUNOZ, A MINIMUM OF 72 HOURS PRIOR TO ANY TRAFFIC PATTERN CHANGES OR LANE CLOSURES, AND PROVIDE DETAILED DESCRIPTION OF THE TRAFFIC PATTERN REVISIONS AND RESPECTIVE DURATIONS IN HIS/HER AUTHORIZATION REQUEST.

UPON RECEIPT OF THE PERMIT AND AUTHORIZATION, THE CONTRACTOR SHALL SUBMIT A COPY TO THE ENGINEER FOR RECORDING. THE IDOT TRAFFIC CONTROL SUPERVISORS MAY BE CONTACTED AT:

KALPANA KANNAN-HOSADURGA
EMAIL: KALPANA.KANNAN-HOSADURGA@ILLINOIS.GOV

CARLOS MUNOZ
EMAIL: CARLOS.MUNOZ@ILLINOIS.GOV

2. THE RESIDENT ENGINEER SHALL CONTACT THE AREA TRAFFIC FIELD ENGINEER ERIC CAMPOS AT ERIC.CAMPOS@ILLINOIS.GOV A MINIMUM OF TWO (2) WEEKS PRIOR TO PLACING THE PERMANENT PAVEMENT MARKINGS.

 REVISED SHEET 4/14/2022

	USER NAME = rvandermus	DESIGNED - RM/RMV	REVISED -  04/12/2022	STATE OF ILLINOIS DEPARTMENT OF TRANSPORTATION	HIGHWAY STANDARDS, GENERAL NOTES & COMMITMENTS WOLF ROAD BRIDGE OVER I-80	F.A.I. RTE.	SECTION	COUNTY	TOTAL SHEETS	SHEET NO.
	PLOT SCALE = 2,0000 ' / in.	CHECKED - MPV	REVISED -			I-80	2020-250-BY	WILL	133	2
PLOT DATE = 4/12/2022	DATE - 07/07/2021	REVISED -		SCALE: SHEET OF SHEETS STA. TO STA.		ILLINOIS FED. AID PROJECT		CONTRACT NO. 62N20		

MODEL: Default
 FILE: \\blm01c.pw01\primera-pw01\documents\01\project\2020\20200425\00 - IDOT Phase II Verbus Design\20200425\01_WO_1-3 - Wolf Road over I-80\Drawings\Current Drawing File\CADD_Sheets\Roadway\011223-21t-egencore

MODEL: Default
 FILE: \\nautilus-pw-beventy.com\primera-pw-01\Documents\01 - Projects\2020\20200425.00 - DDOT Phase II Various Design\20200425.01_WO 1-3 - Wolf Road over I-80\Drawings\Current Drawing Files\CADD_Sheets\Roadway\0113233-ah-500-02.dgn
 301 W JACKSON BLVD SUITE 600 CHICAGO IL 60601 P.312-465-4010 F.312-465-4015

CODE NO.	ITEM	UNIT	TOTAL QUANTITY URBAN	CONSTRUCTION CODE	
				90% FED 10% STATE	WOLF RD
44200970	CLASS B PATCHES, TYPE II, 10 INCH	SQ YD	9		9
44200974	CLASS B PATCHES, TYPE III, 10 INCH	SQ YD	528		528
44200976	CLASS B PATCHES, TYPE IV, 10 INCH	SQ YD	50		50
44201299	DOWEL BARS 1 1/2"	EACH	1452		1452
44201765	CLASS D PATCHES, TYPE II, 10 INCH	SQ YD	500		500
44201769	CLASS D PATCHES, TYPE III, 10 INCH	SQ YD	100		100
44201771	CLASS D PATCHES, TYPE IV, 10 INCH	SQ YD	125		125
44213200	SAW CUTS	FOOT	4476		4476
48101620	AGGREGATE SHOULDERS, TYPE B 10"	SQ YD	436		436
48203029	HOT-MIX ASPHALT SHOULDERS, 8"	SQ YD	1897		1897
48300705	PORTLAND CEMENT CONCRETE SHOULDERS 12 1/4"	SQ YD	23		23
50101500	REMOVAL OF EXISTING SUPERSTRUCTURES	EACH	1		1
50102400	CONCRETE REMOVAL	CU YD	33.2		33.2
50104650	SLOPE WALL REMOVAL	SQ YD	370		370
50157300	PROTECTIVE SHIELD	SQ YD	598		598
50200100	STRUCTURE EXCAVATION	CU YD	226.0		226.0
50300225	CONCRETE STRUCTURES	CU YD	195.3		195.3
50300255	CONCRETE SUPERSTRUCTURE	CU YD	379.9		379.9
50300260	BRIDGE DECK GROOVING	SQ YD	941		941
50300300	PROTECTIVE COAT	SQ YD	1771		1771
50301350	CONCRETE SUPERSTRUCTURE (APPROACH SLAB)	CU YD	125.8		125.8
50500105	FURNISHING AND ERECTING STRUCTURAL STEEL	L SUM	1		1
50500505	STUD SHEAR CONNECTORS	EACH	9891		9891
50800205	REINFORCEMENT BARS, EPOXY COATED	POUND	229850		229850
50901720	BICYCLE RAILING	FOOT	1031		1031
*50901730	BRIDGE FENCE RAILING	FOOT	278		278
*50901735	BRIDGE FENCE RAILING (SIDEWALK)	FOOT	282		282
*50901750	PARAPET RAILING	FOOT	278		278
51100100	SLOPE WALL 4 INCH	SQ YD	478		478
*51200957	FURNISHING METAL SHELL PILES 12" X 0.250"	FOOT	135		135
*51200963	FURNISHING METAL SHELL PILES 16" X 0.375"	FOOT	1272		1272
*51202305	DRIVING PILES	FOOT	1407		1407
*51203200	TEST PILE METAL SHELLS	EACH	3		3
*51204650	PILE SHOES	EACH	28		28
51500100	NAME PLATES	EACH	2		2

①
①

*** SPECIALTY ITEM**

	USER NAME = rmartin	DESIGNED - RM/RMV	REVISED -
	PLOT SCALE = 2.0000' / in.	DRAWN - RM/RMV	REVISED -
	PLOT DATE = 2/2/2022	CHECKED - MPV	REVISED +
		DATE - 07/07/2021	REVISED -

**STATE OF ILLINOIS
DEPARTMENT OF TRANSPORTATION**

**SUMMARY OF QUANTITIES
WOLF ROAD BRIDGE OVER I-80**

SCALE: SHEET OF SHEETS STA. TO STA.

F.A.P. RTE.	SECTION	COUNTY	TOTAL SHEETS	SHEET NO.
2688	2020-250-BY	WILL	133	4
CONTRACT NO. 62N20				
ILLINOIS FED. AID PROJECT				

① REVISED SHEET 4/14/2022

MODEL: Default
 FILE: Multi-plot/printers-pw-beentley.com:primera-pw-01\Documents\01 - Project\2020\20200425.00 - DOT Phase II Verbus Design\20200425.01.WD.1.3 - Wolf Road over I-80\Drawings\Current Drawing Files\CADD_Sheets\Roadway\0113233-ink-500-03.dgn
 300 W JACKSON BLVD SUITE 600 CHICAGO IL 60601 P.312.465.4010 F.312.465.4015

CONSTRUCTION CODE
 BRIDGE
 0013
 90% FED
 10% STATE

CODE NO.	ITEM	UNIT	TOTAL QUANTITY URBAN	WOLF RD
52100010	ELASTOMERIC BEARING ASSEMBLY, TYPE 1	EACH	28	28
52100505	ANCHOR BOLTS, 5/8"	EACH	28	28
52100510	ANCHOR BOLTS, 3/4"	EACH	42	42
550A0070	STORM SEWERS, CLASS A, TYPE 1 15"	FOOT	202	202
550A0090	STORM SEWERS, CLASS A, TYPE 1 18"	FOOT	133	133
550A0120	STORM SEWERS, CLASS A, TYPE 1 24"	FOOT	17	17
54213660	PRECAST REINFORCED CONCRETE FLARED END SECTIONS 15"	EACH	5	5
54213663	PRECAST REINFORCED CONCRETE FLARED END SECTIONS 18"	EACH	3	3
55100500	STORM SEWER REMOVAL 12"	FOOT	50	50
55101200	STORM SEWER REMOVAL 24"	FOOT	17	17
56400100	FIRE HYDRANTS TO BE MOVED	EACH	1	1
58600101	GRANULAR BACKFILL FOR STRUCTURES	CU YD	382.0	382.0
58700300	CONCRETE SEALER	SQ FT	1603	1603
59000200	EPOXY CRACK INJECTION	FOOT	4	4
59100100	GEOCOMPOSITE WALL DRAIN	SQ YD	99	99
60108206	PIPE UNDERDRAINS, TYPE 2, 6"	FOOT	128	128
60200805	CATCH BASINS, TYPE A, 4'-DIAMETER, TYPE 8 GRATE	EACH	1	1
60201310	CATCH BASINS, TYPE A, 4'-DIAMETER, TYPE 20 FRAME AND GRATE	EACH	9	9
60219510	MANHOLES, TYPE A, 4'-DIAMETER, TYPE 20 FRAME AND GRATE	EACH	2	2
60221100	MANHOLES, TYPE A, 5'-DIAMETER, TYPE 1 FRAME, CLOSED LID	EACH	1	1
60260100	INLETS TO BE ADJUSTED	EACH	2	2
60500040	REMOVING MANHOLES	EACH	1	1
60500060	REMOVING INLETS	EACH	16	16
60605000	COMBINATION CONCRETE CURB AND GUTTER, TYPE B-6.24	FOOT	400	400
63000001	STEEL PLATE BEAM GUARDRAIL, TYPE A, 6 FOOT POSTS	FOOT	1172	1172
63000035	BACK SIDE PROTECTION OF GUARDRAIL	FOOT	586	586
63100085	TRAFFIC BARRIER TERMINAL, TYPE 6	EACH	4	4
63100167	TRAFFIC BARRIER TERMINAL, TYPE 1 (SPECIAL) TANGENT	EACH	6	6
63200310	GUARDRAIL REMOVAL	FOOT	1174	1174
63700280	CONCRETE BARRIER, DOUBLE FACE, 44 INCH HEIGHT	FOOT	4	4
63700805	CONCRETE BARRIER TRANSITION	FOOT	64	64
64200116	SHOULDER RUMBLE STRIPS, 16 INCH	FOOT	3116	3116
* 66900200	NON SPECIAL WASTE DISPOSAL	CU YD	250	250
66400305	CHAIN LINK FENCE, 6'	FOOT	1031	1031
* 66901006	REGULATED SUBSTANCES MONITORING	CAL DA	20	20
66901001	REGULATED SUBSTANCES PRE-CONSTRUCTION PLANS	L SUM	1	1
* 66901003	REGULATED SUBSTANCES FINAL CONSTRUCTION REPORTS	L SUM	1	1
* 66900530	SOIL DISPOSAL ANALYSIS	EACH	4	4



*** SPECIALTY ITEM**

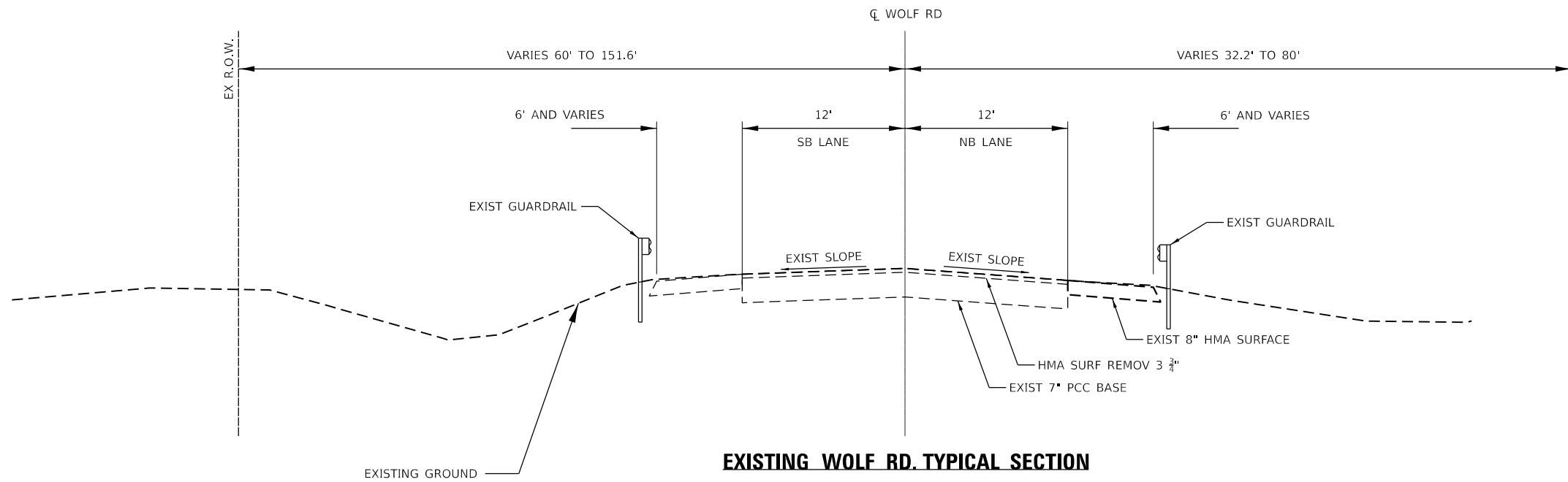
	USER NAME = rvandermus	DESIGNED - RM/RMV	REVISED -
	PLOT SCALE = 2.0000' / in.	DRAWN - RM/RMV	REVISED -
	PLOT DATE = 2/4/2022	CHECKED - MPV	REVISED -
		DATE - 07/07/2021	REVISED -

**STATE OF ILLINOIS
 DEPARTMENT OF TRANSPORTATION**

**SUMMARY OF QUANTITIES
 WOLF ROAD BRIDGE OVER I-80**

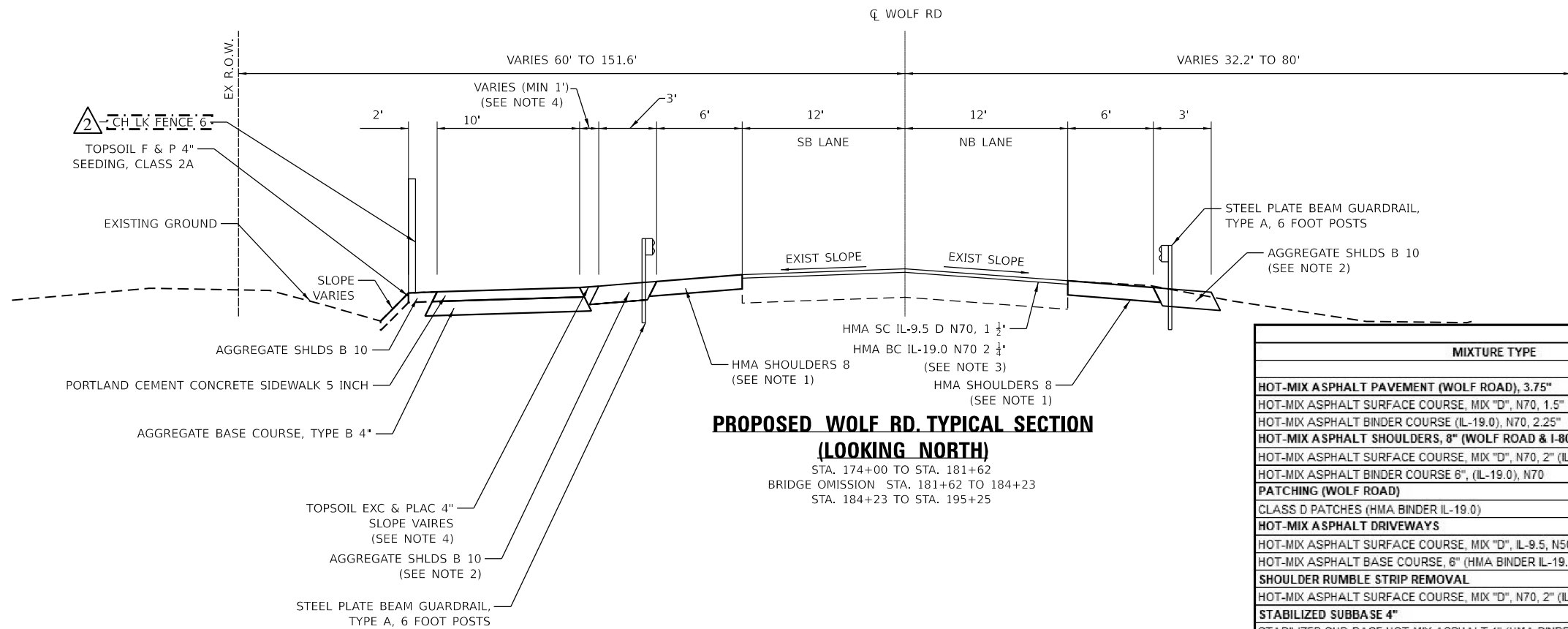
SCALE: SHEET OF SHEETS STA. TO STA.

REVISED SHEET 4/14/2022				
F.A.P. RTE.	SECTION	COUNTY	TOTAL SHEETS	SHEET NO.
2688	2020-250-BY	WILL	133	5
CONTRACT NO. 62N20				
ILLINOIS FED. AID PROJECT				



**EXISTING WOLF RD. TYPICAL SECTION
(LOOKING NORTH)**

STA. 173+50 TO STA. 181+61
BRIDGE OMISSION STA. 181+61 TO STA. 184+25
STA. 184+25 TO STA. 191+00



**PROPOSED WOLF RD. TYPICAL SECTION
(LOOKING NORTH)**

STA. 174+00 TO STA. 181+62
BRIDGE OMISSION STA. 181+62 TO 184+23
STA. 184+23 TO STA. 195+25

1. SHOULDER WORK APPLICABLE FROM STA. 174+00 TO STA. 181+80 AND FROM STA. 184+05 TO 191+08.
2. AGGREGATE SHOULDERS TO BE PLACED AT PROPOSED GUARDRAIL LOCATIONS.
3. SURFACE COURSE AND BINDER COURSE APPLICABLE FROM STA. 178+23 TO 181+37 AND FROM STA. 184+48 TO 195+25.
4. SEEDING CL 2A SHALL BE ADDED TO THIS TURF AREA WHEN THE WIDTH IS GREATER THAN 1'.

MIXTURE TYPE	AIR VOIDS	QUALITY MANAGEMENT PROGRAM (QMP)
HOT-MIX ASPHALT PAVEMENT (WOLF ROAD), 3.75"		
HOT-MIX ASPHALT SURFACE COURSE, MIX "D", N70, 1.5" (L-9.5mm)	4% @ 70 Gyr.	QC/QA
HOT-MIX ASPHALT BINDER COURSE (IL-19.0), N70, 2.25"	4% @ 70 Gyr.	QC/QA
HOT-MIX ASPHALT SHOULDERS, 8" (WOLF ROAD & I-80)		
HOT-MIX ASPHALT SURFACE COURSE, MIX "D", N70, 2" (L-9.5mm)	4% @ 70 Gyr.	QC/QA
HOT-MIX ASPHALT BINDER COURSE 6", (IL-19.0), N70	4% @ 70 Gyr.	QC/QA
PATCHING (WOLF ROAD)		
CLASS D PATCHES (HMA BINDER IL-19.0)	4% @ 70 Gyr.	QC/QA
HOT-MIX ASPHALT DRIVEWAYS		
HOT-MIX ASPHALT SURFACE COURSE, MIX "D", IL-9.5, N50, 2"	4% @ 50 Gyr.	QC/QA
HOT-MIX ASPHALT BASE COURSE, 6" (HMA BINDER IL-19.0)	4% @ 50 Gyr.	QC/QA
SHOULDER RUMBLE STRIP REMOVAL		
HOT-MIX ASPHALT SURFACE COURSE, MIX "D", N70, 2" (L-9.5mm)	4% @ 70 Gyr.	QC/QA
STABILIZED SUBBASE 4"		
STABILIZED SUB-BASE HOT-MIX ASPHALT 4" (HMA BINDER IL-19.0)	3% @ 50 Gyr.	QC/QA

QMP DESIGNATION: QUALITY CONTROL/QUALITY ASSURANCE (QC/QA), QUALITY CONTROL FOR PERFORMANCE (QCP)
THE UNIT WEIGHT USED TO CALCULATE ALL HMA SURFACE MIXTURE QUANTITIES IS 112 LBS/SQ YD/IN.

The "AC Type" for Polymerized HMA Mixes SHALL BE "SBS/SBR PG 76 -22" AND FOR NON-POLYMERIZED HMA THE "AC TYPE" shall be "PG 64 -22" UNLESS modified by RECLAIMED MATERIALS SPECIFICATIONS.

2 REVISED SHEET 4/14/2022

MODEL: Default; FILE: \\blm\c:\p\proj\primera-pw\best\by.com\primera-pw\01\Documents\01 - Project\2020\20200425-00 - IDOT Phase II Verbus Design\20200425-01_WO 1-3 - Wolf Road over I-80\Drawings\Current Drawing File\CADD_Sheets\Roadway\0112233-ht-tytical.dgn



USER NAME = rvandermus	DESIGNED - RM/RMV	REVISED - 04/12/2022
	DRAWN - RM/RMV	REVISED -
PLOT SCALE = 2,0000 ' / in.	CHECKED - MPV	REVISED -
PLOT DATE = 4/12/2022	DATE - 07/07/2021	REVISED -

STATE OF ILLINOIS
DEPARTMENT OF TRANSPORTATION

TYPICAL SECTIONS
WOLF ROAD BRIDGE OVER I-80

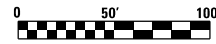
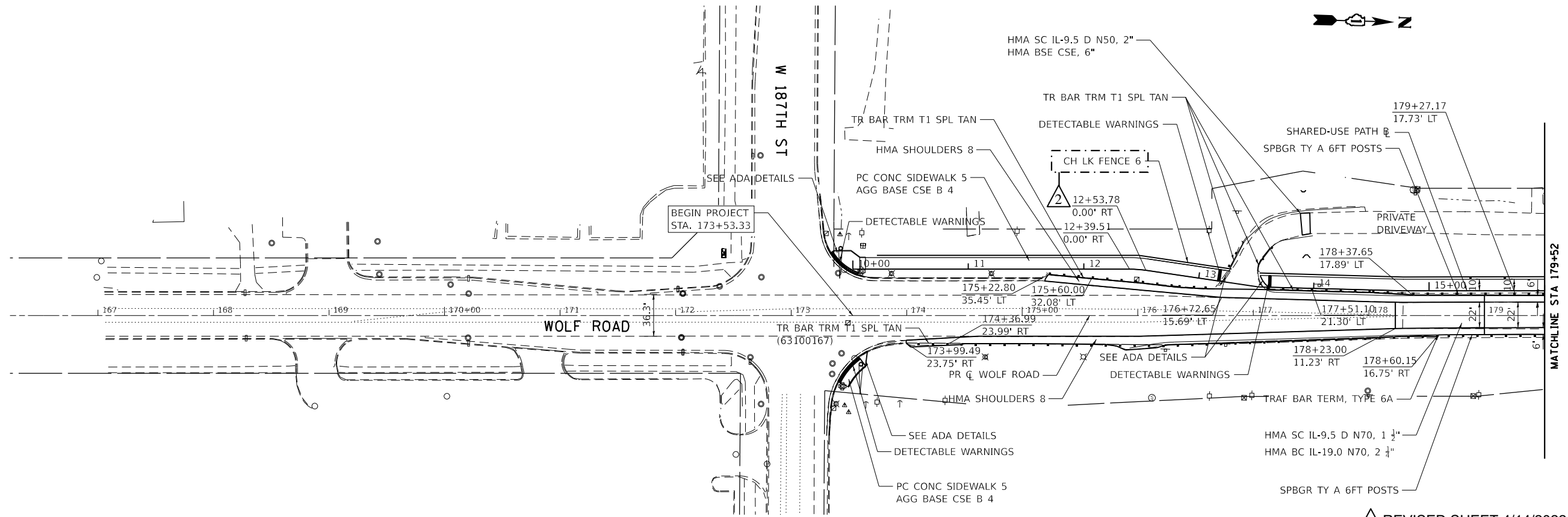
SCALE: SHEET OF SHEETS STA. TO STA.

F.A.I. RTE.	SECTION	COUNTY	TOTAL SHEETS	SHEET NO.
I-80	2020-250-BY	WILL	133	9
			CONTRACT NO. 62N20	
ILLINOIS FED. AID PROJECT				

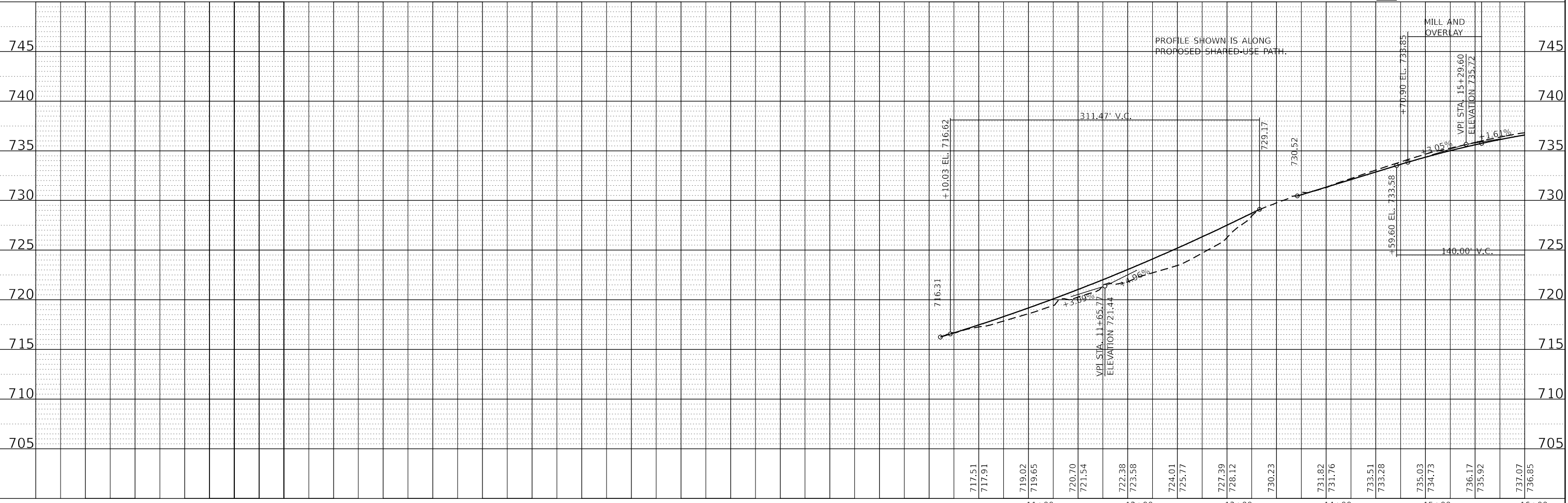
PLAN	SURVEYED	DATE
	PLOTTED	BY
	ALIGNED	CHECKED
	NOTE BOOK	NO.
	CADD FILE NAME	

PROFILE	SURVEYED	DATE
	PLOTTED	BY
	GRADES CHECKED	
	STRUCTURE NOTATIONS CHECKED	
	NO.	

MODEL: Default
 FILE NAME: p:\primera-pw-bentley.com\plminter-pw-0\Documents\01\Projects\2020\20200425\01-WO 1-3 - Wolf Road over I-80\Drawings\Current\Drawing Files\CADD_Sheets\ roadway\01132333-enc-dhmf-d1.dgn



REVISOR: 2
 DATE: 4/14/2022



USER NAME	= r.vanderdus
DESIGNED	- RM/RMV
DRAWN	- RM/RMV
CHECKED	- MPV
DATE	- 07/07/2021
REVISED	- 04/12/2022
REVISED	-
REVISED	-
REVISED	-

STATE OF ILLINOIS
 DEPARTMENT OF TRANSPORTATION

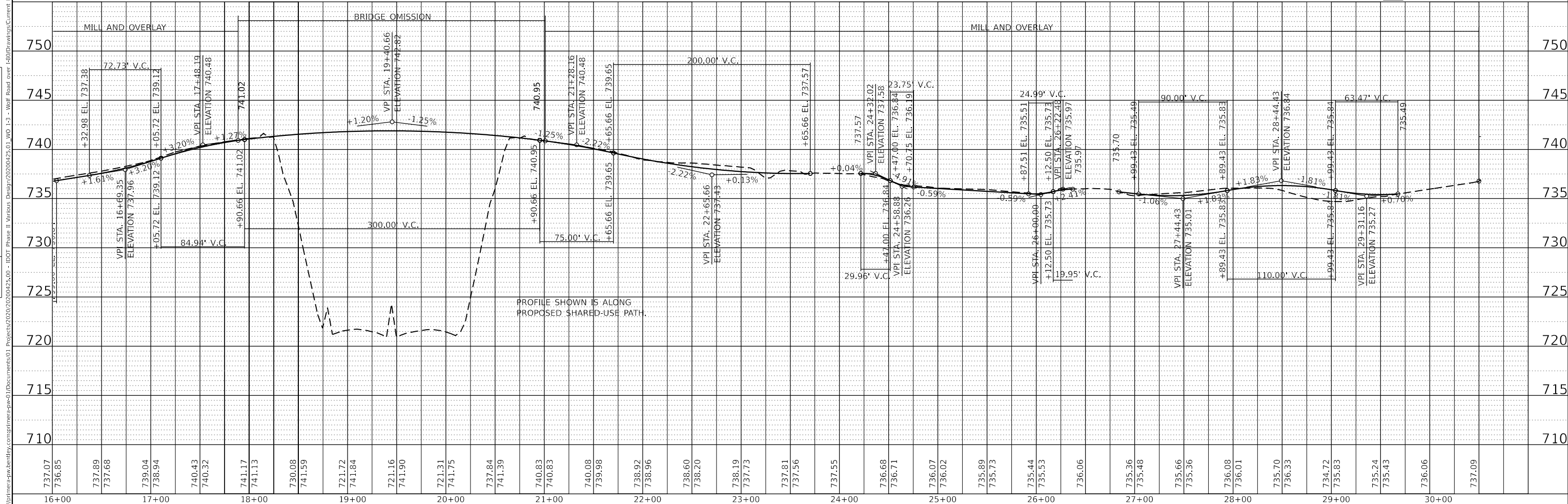
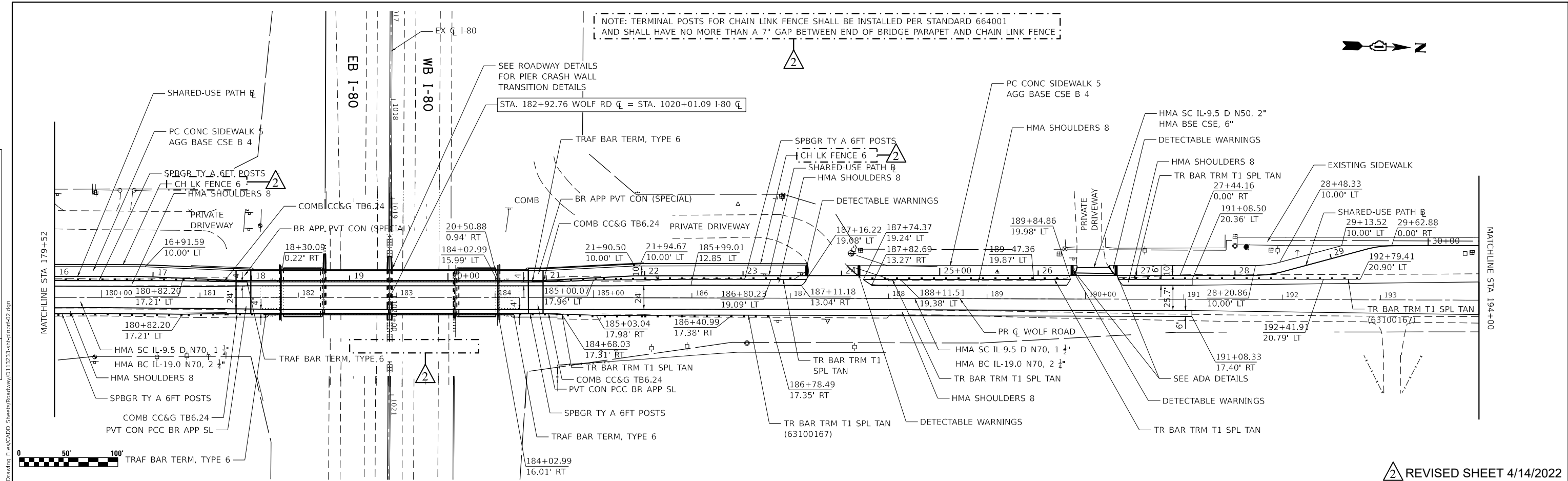
SHARED USE PATH - PLAN & PROFILE
 WOLF ROAD BRIDGE OVER I-80

F.A.I. RTE.	SECTION	COUNTY	TOTAL SHEETS	SHEET NO.
I-80	2019-008-BR	WILL	133	17
CONTRACT NO. 62N20				
ILLINOIS FED. AID PROJECT				

SCALE: SHEET OF SHEETS STA. TO STA.

DATE	
BY	
PLAN	SURVEYED
	PLOTTED
	ALIGNED
	CHECKED
	NO. _____
	FILE NAME

DATE	
BY	
PROFILE	SURVEYED
	PLOTTED
	GRADES CHECKED
	STRUCTURE NOTATION CHKD
	NO. _____
	FILE NAME



	USER NAME = r.vandermus	DESIGNED - ESPRMV	REVISED - 04/12/2022	STATE OF ILLINOIS DEPARTMENT OF TRANSPORTATION	SHARED USE PATH - PLAN & PROFILE WOLF ROAD BRIDGE OVER I-80	F.A.I. R.T.E.	SECTION	COUNTY	TOTAL SHEETS	SHEET NO.
	PLOT SCALE = 100.0000' / in.	DRAWN - ESPRMV	REVISED -			I-80	2019-008-BR	WILL	133	18
	PLOT DATE = 4/12/2022	CHECKED - MPV	REVISED -			CONTRACT NO. 62N20				
		DATE - 02/00/2029	REVISED -			ILLINOIS	FED. AID PROJECT			

MODEL: Default
FILE NAME: p:\primera-pw-bentley.com\plm\paw\0\Documents\01\Projects\2020\20200425\01\WO_L3 - Wolf Road over I-80\Drawings\Current\Drawing Files\CADD_Sheets\ roadway\01132333-arc-hrpf02.dgn
SCALE: SHEET OF SHEETS STA. TO STA.