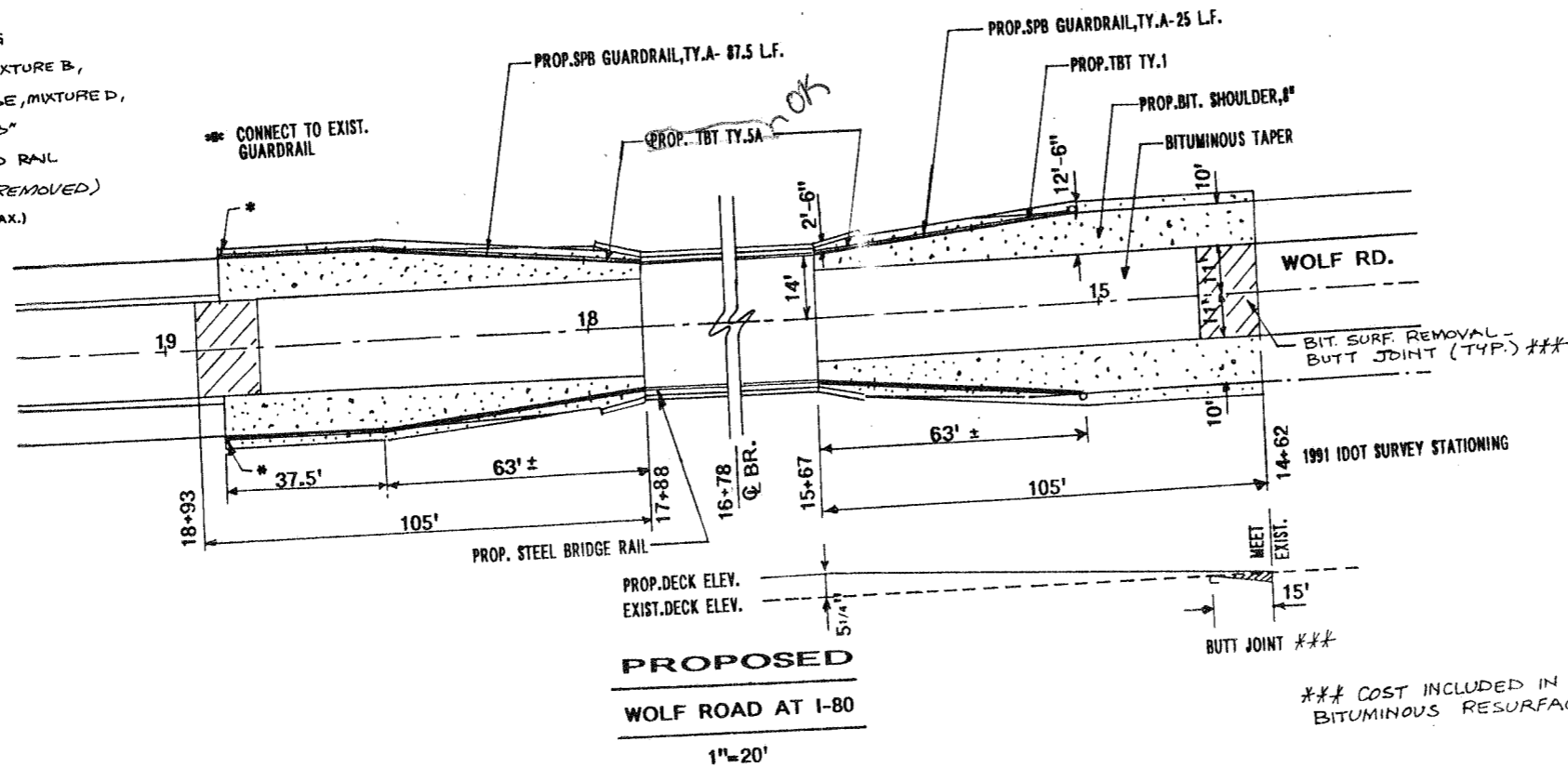


EXISTING
WOLF ROAD AT I-80
1" = 20'

ROADWAY - BILL OF MATERIALS

ITEM	UNIT	TOTAL QUANTITY
TEMPORARY PAVEMENT MARKING LINE 4"	LIN FT	420
EARTH EXCAVATION	CU YD	106
EMBANKMENT	CU YD	50
BITUMINOUS SHOULDERS 8"	SQ YD	475
BITUMINOUS MATERIALS (PRIME COAT)	TON	0.2
AGGREGATE (PRIME COAT)	TON	1
BITUMINOUS CONCRETE BINDER COURSE, MIXTURE B, TYPE 2	TON	60
BITUMINOUS CONCRETE SURFACE COURSE, MIXTURE D, CLASS I, TYPE 2	TON	45
GUTTER REMOVAL	LIN FT	210
STEEL PLATE BEAM GUARDRAIL, TYPE A	LIN FT	225
TRAFFIC BARRIER TERMINAL, TYPE 1	EACH	2
TRAFFIC BARRIER TERMINAL, TYPE 5A	EACH	4
STEEL PLATE BEAM GUARDRAIL REMOVAL	LIN FT	250
PAVEMENT MARKING TAPE, TYPE III, 4"	LIN FT	2160
PAVEMENT MARKING TAPE, TYPE III, 24"	LIN FT	22
THERMOPLASTIC PAVEMENT MARKING-LINE 4"	LIN FT	420
PREFORMED PLASTIC PAVEMENT MARKING-LINE 4"	LIN FT	440
SHORT-TERM PAVEMENT MARKING	LIN FT	96
TEMPORARY TRAFFIC SIGNAL INSTALLATION	EACH	1
INCIDENTAL BIT. SURFACING	TONS	50
BIT. SURFACE REMOVAL (C.M.) - VAR. DEPTH	SQ YD	300
RAISED REFL. PAVT. MARKERS	EACH	4
RAISED REFL. PAVT. MARKERS (BRIDGE)	EACH	6

- LEGEND**
- ① EXIST. CONC. PAVEMENT
 - ② EXIST. BITUMINOUS RESURFACING
 - ** ③ PROP. BIT. CONC. BINDER COURSE, MIXTURE B, TYPE 2 - THICKNESS VARIES
 - ④ PROP. BIT. CONC. SURFACE COURSE, MIXTURE D, CLASS I, TYPE 2 - 1 1/2"
 - ⑤ PROP. BITUMINOUS SHOULDERS, 8"
 - ⑥ PROP. STEEL PLATE BEAM GUARD RAIL
 - * EXIST. CONC. GUTTER (TO BE REMOVED)
 - ** BINDER CSE. SHALL BE PLACED IN 2 INCH (MAX.) LEFT THICKNESS.



PROPOSED
WOLF ROAD AT I-80
1" = 20'

*** COST INCLUDED IN BITUMINOUS RESURFACING.

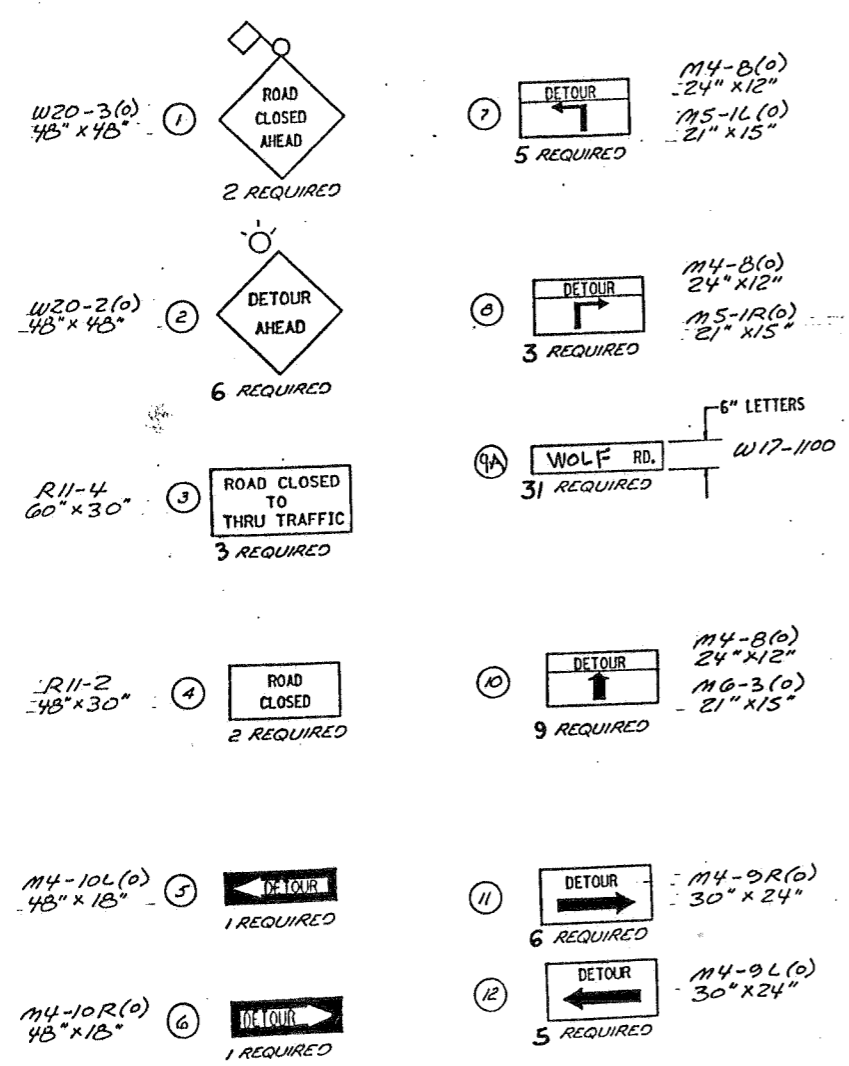
ILLINOIS DEPARTMENT OF TRANSPORTATION
WOLF ROAD AT I-80
ROADWAY PLAN

REVISIONS	
NAME	DATE

SCALE: VERT. 1" = 20'
HORIZ. 1" = 20'
DATE: FEB. 93

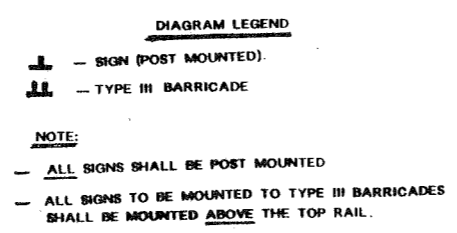
DRAWN BY BK
CHECKED BY RM

099-0192

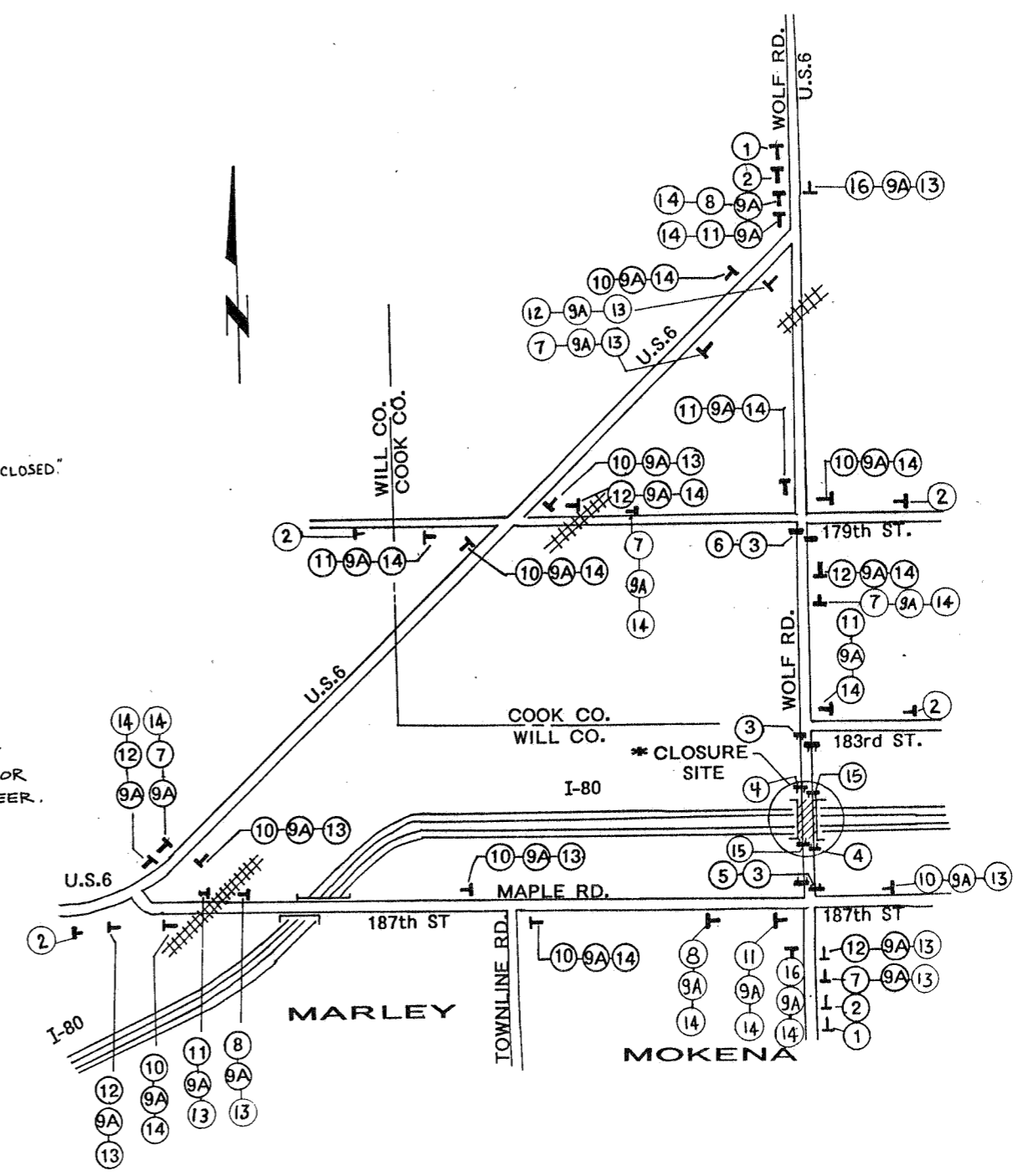


NOTE:
SIGNS IN SEQUENCE SHALL BE SPACED AT 200' INTERVALS OR AS DIRECTED BY THE ENGINEER.

SIGN LEGEND



ALL DETOUR SIGNS SHALL BE COVERED AND LEFT IN PLACE AFTER BEARING MODIFICATION WORK IS COMPLETE. DETOUR SIGNS SHALL BE UNCOVERED FOR USE DURING DECK OVERLAY POURS WHEN THE STRUCTURE MUST BE CLOSED. COST INCIDENTAL TO TRAFFIC CONTROL & PROTECTION PAY ITEM.



APPROX. SCALE 1/2 MILE

* SEE SPECIAL PROVISIONS FOR BRIDGE CLOSURE RESTRICTIONS

REVISIONS	
NAME	DATE

ILLINOIS DEPARTMENT OF TRANSPORTATION

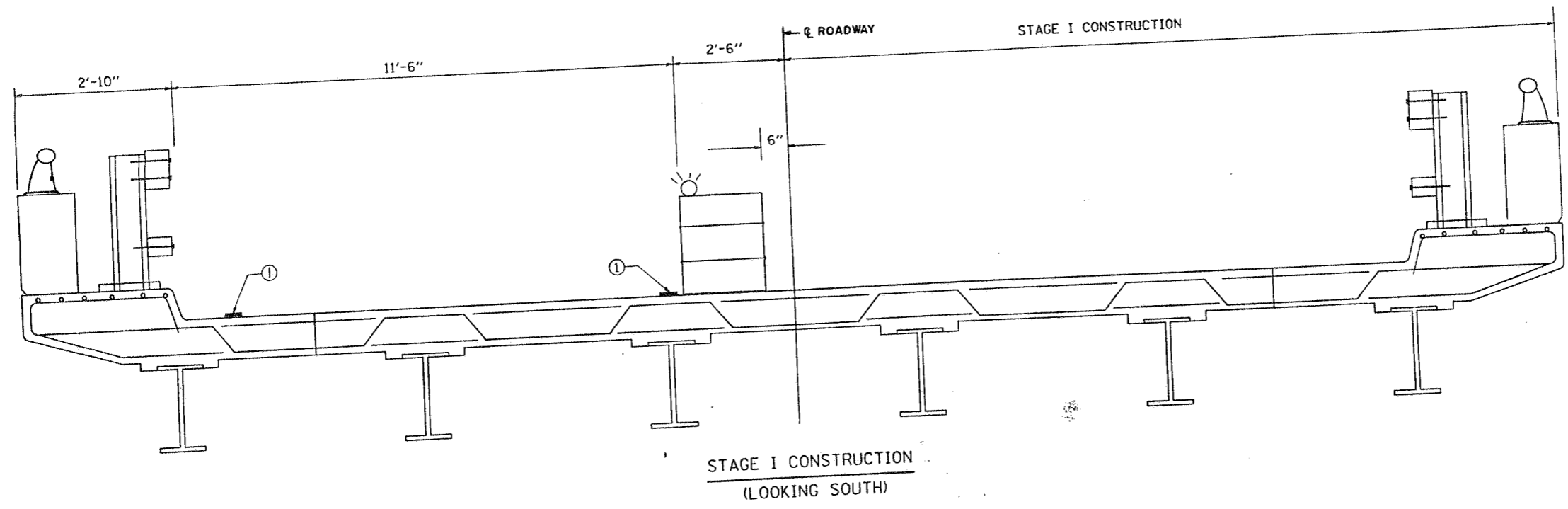
**WOLF ROAD AT I-80
DETOUR PLAN**

SCALE: VERT. NONE
HORIZ. NONE

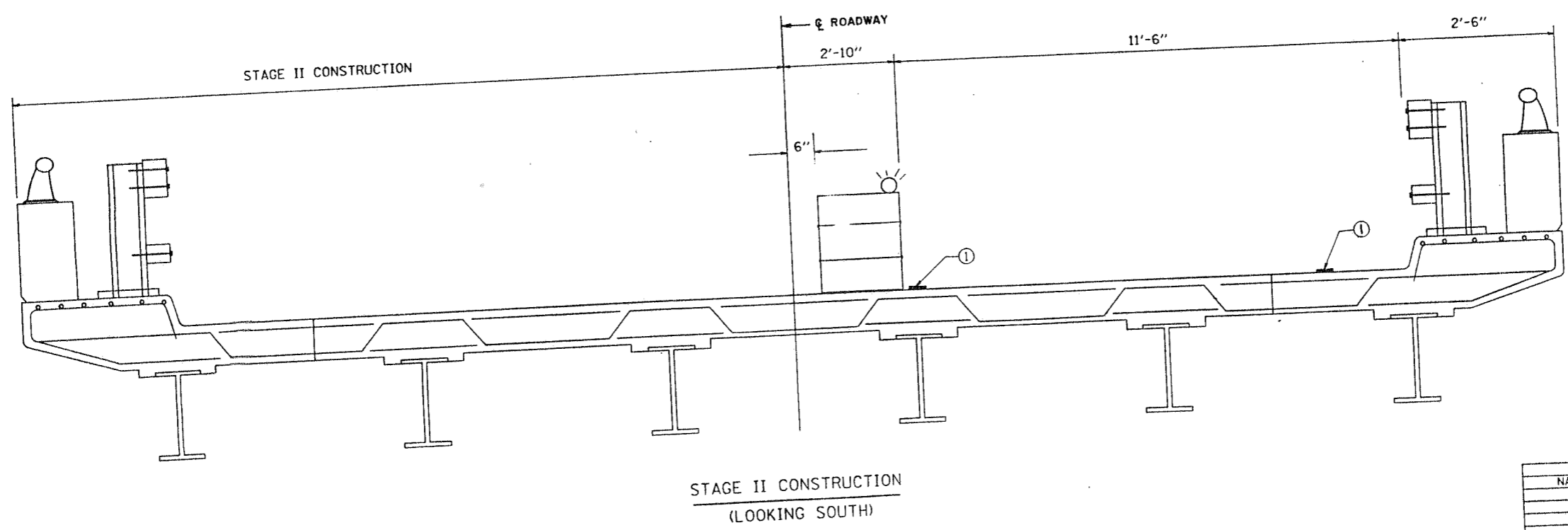
DATE: _____

DRAWN BY: EM
CHECKED BY: RM

P. A. NO.	SECTION	COUNTY	TOTAL SHEETS	SHEET NO.
80	*	WILL	42	20
STA.	TO STA.			
FED. ROAD DIST. NO.	ILLINOIS	FED. AID PROJECT		
99-5(HB-4 & 1-HB-1)BR				



- LEGEND**
- ① SOLID WHITE PAVEMENT MARKING TAPE, TYPE 3-4"
 - NON-METALLIC DRUMS WITH MONO-DIRECTIONAL STEADY BURN LIGHTS @ 50' CTR'S.



REVISIONS	
NAME	DATE

ILLINOIS DEPARTMENT OF TRANSPORTATION

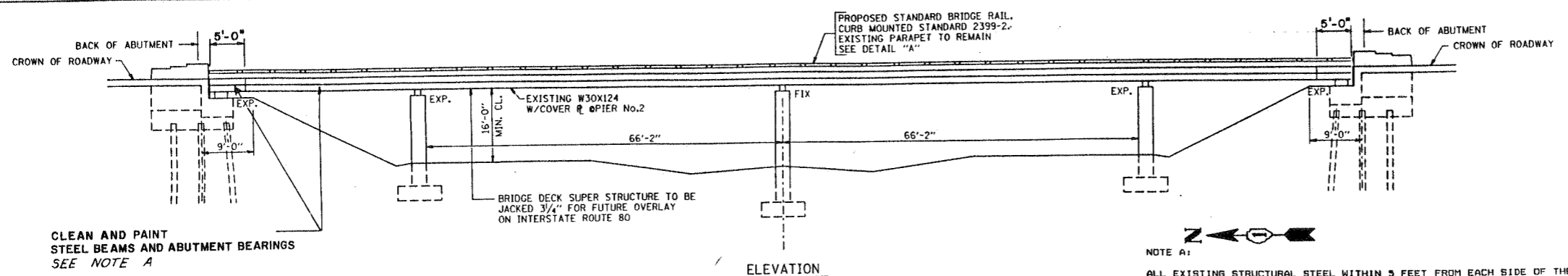
WOLF ROAD OVER
INTERSTATE ROUTE 80
STAGE I AND II CONSTRUCTION
S.N. 099-0192

SCALE: VERT. NONE
HORIZ. NONE

DATE 11/24/92

DRAWN BY CADD/MV
CHECKED BY J.A.F.

Nov 24 1855612 1992
25100.dgn LV1-63

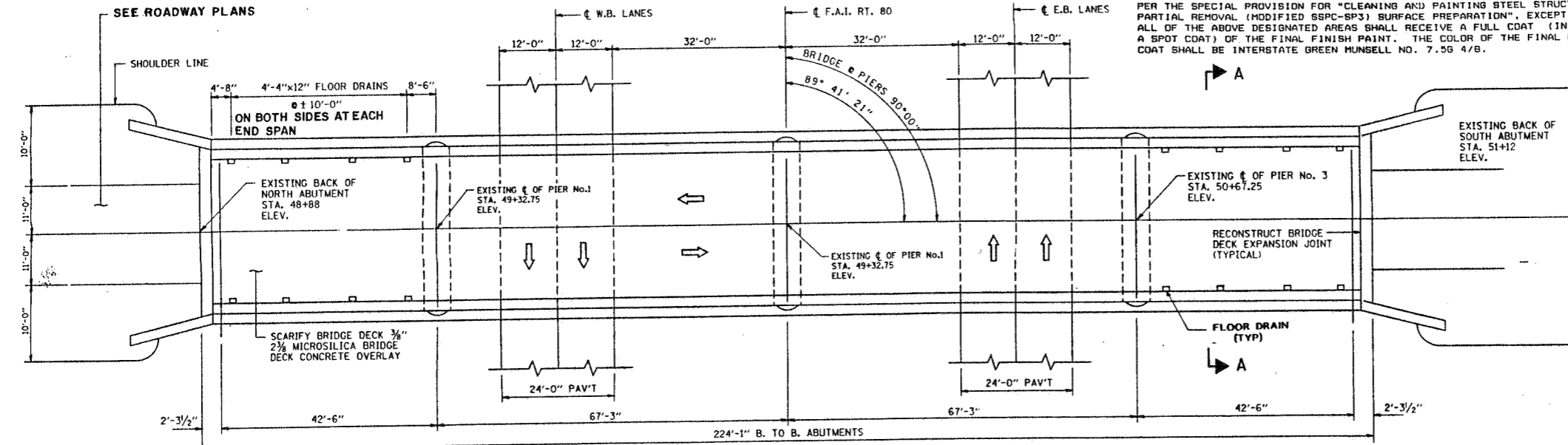


CLEAN AND PAINT STEEL BEAMS AND ABUTMENT BEARINGS SEE NOTE A

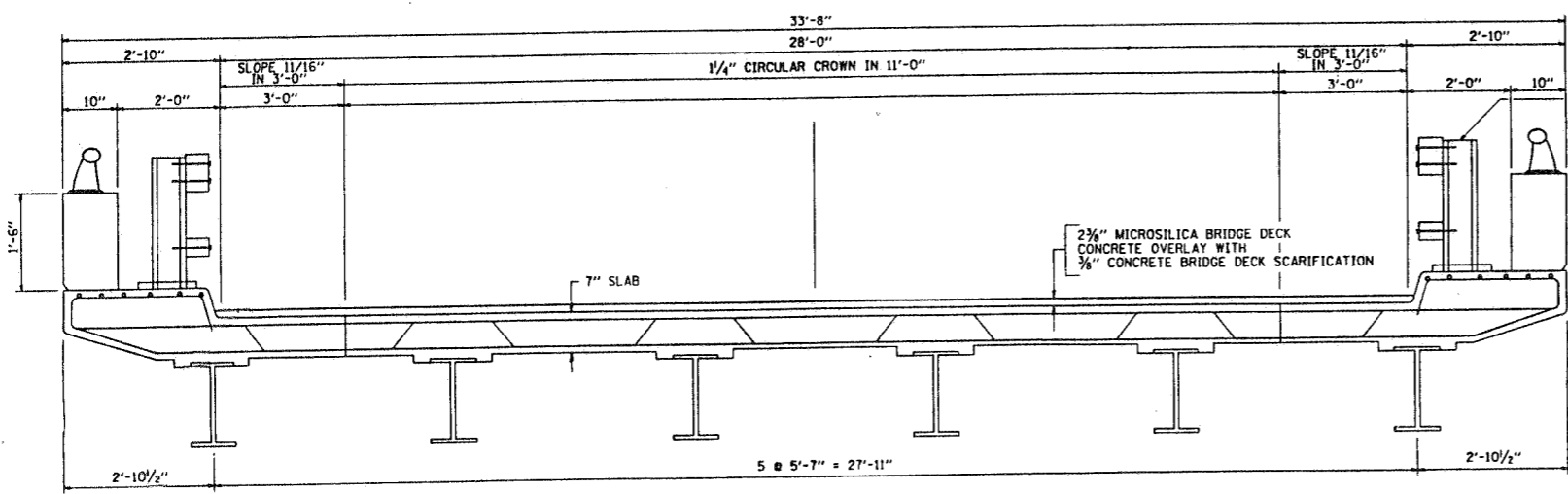
ELEVATION



NOTE A:
ALL EXISTING STRUCTURAL STEEL WITHIN 5 FEET FROM EACH SIDE OF THE EXPANSION JOINTS ALONG THE GIRDERS AND THE EXTERIOR FACE AND BOTTOM OF THE BOTTOM FLANGE OF THE FASCIA GIRDERS SHALL BE CLEANED AND PAINTED AS PER THE SPECIAL PROVISION FOR "CLEANING AND PAINTING STEEL STRUCTURES PARTIAL REMOVAL (MODIFIED SSPC-SP3) SURFACE PREPARATION", EXCEPT THAT ALL OF THE ABOVE DESIGNATED AREAS SHALL RECEIVE A FULL COAT (IN LIEU OF A SPOT COAT) OF THE FINAL FINISH PAINT. THE COLOR OF THE FINAL FINISH COAT SHALL BE INTERSTATE GREEN MUNSSELL NO. 7.5G 4/8.



PLAN



SECTION A-A

099-0192

SCOPE OF WORK

1. JACK BRIDGE DECK SUPERSTRUCTURE 3/4"
2. SCARIFY BRIDGE DECK 3/8"
3. DECK SLAB REPAIRS
4. PLACE NEW STANDARD STEEL BRIDGE RAIL, CURB MOUNTED STD 2399-2.
5. RECONSTRUCT EXPANSION JOINTS.
6. FORMED CONCRETE REPAIR ON SUBSTRUCTURE AS REQUIRED.
7. 2 3/8" MICROSILICA BRIDGE DECK CONCRETE OVERLAY.
8. BRIDGE CLEANING AND PAINTING. SEE NOTE A.
9. TRAFFIC CONTROL AND PROTECTION.

TOTAL BILL OF MATERIALS - BRIDGE

ITEM	UNIT	QTY
CLASS "K" CONCRETE SUPER STRUCTURE	CU. YDS.	8.1
EPOXY COATED REINFORCEMENT	LBS.	1950
FLOOR DRAIN EXTENSION	EACH	16
DECK SLAB REMOVAL (PARTIAL DEPTH)	SQ. YD.	25
DECK SLAB REPAIR (FULL DEPTH - TYPE I)	SQ. YD.	10
PREFORMED JOINT SEAL 4"	LIN. FT.	68
FURNISHING AND ERECTING STRUCTURAL STEEL	LBS.	11840
BRIDGE DECK SCARIFICATION (3/8" INCH)	SQ. YDS.	683
MICROSILICA BRIDGE DECK CONC. OVERLAY 2 3/8"	SQ. YDS.	671
STEEL BRIDGE RAIL	LIN. FT.	452
FORMED CONCRETE REPAIR (≤ 5")	SQ. FT.	15
FORMED CONCRETE REPAIR (> 5")	SQ. FT.	25
EPOXY CRACK SEALING	LIN. FT.	200
JACKING EXISTING SUPERSTRUCTURE	L.SUM.	0.5
CONCRETE REMOVAL	CU. YD.	7.6
CLEANING AND PAINTING	L.SUM.	0.5
POWER TOOL CLEANING RESIDUE CONTAINMENT AND DISPOSAL	L.SUM.	0.5
ELASTOMERIC BEARING ASS. TYPE I	EACH	12
ELASTOMERIC BEARING ASSEMBLY TYPE II	EACH	12
DECK SLAB REPAIR (FULL DEPTH - TYPE II)	SQ. YD.	7

GENERAL NOTES:

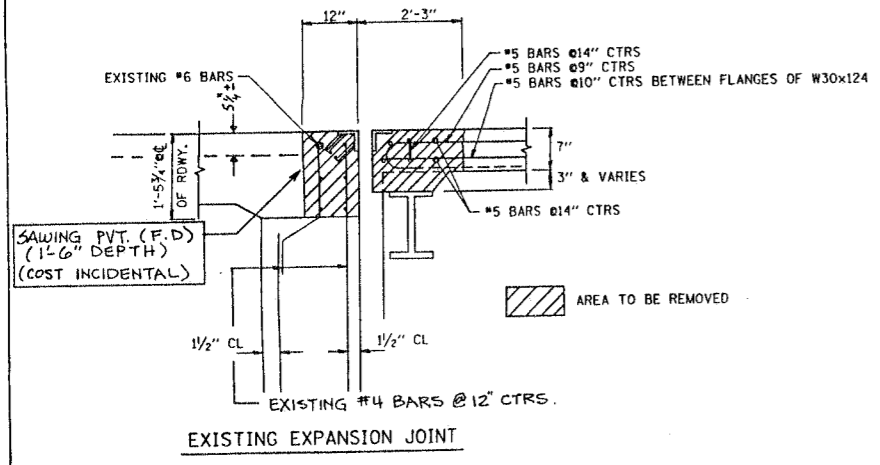
1. PLAN DIMENSIONS AND DETAILS RELATIVE TO EXISTING STRUCTURES HAVE BEEN TAKEN FROM EXISTING PLANS AND ARE SUBJECT TO NOMINAL CONSTRUCTION VARIATIONS. IT SHALL BE THE CONTRACTOR'S RESPONSIBILITY TO VERIFY SUCH DIMENSIONS AND DETAILS IN THE FIELD AND MAKE NECESSARY APPROVED ADJUSTMENTS PRIOR TO CONSTRUCTION OR ORDERING OF MATERIALS. SUCH VARIATION SHALL NOT BE CAUSE FOR ADDITIONAL COMPENSATION FOR A CHANGE IN THE SCOPE, HOWEVER, THE CONTRACTOR WILL BE PAID FOR THE QUANTITY ACTUALLY FURNISHED AT THE UNIT BID PRICE FOR THE WORK.
2. REINFORCEMENT BARS SHALL CONFORM TO THE REQUIREMENTS OF AASHTO M-31 OR M-53 GRADE 60.
3. DECK REPAIR METHOD 2 SHALL BE USED.
3. THE CONTRACTOR MUST USE EXTREME CARE DURING CONCRETE REMOVALS AS NOT TO NICK, CUT, OR DAMAGE ANY OF THE STRUCTURAL STEEL AND TO NOT DAMAGE OR CUT EXISTING REINFORCING TO BE INCORPORATED INTO THE NEW CONSTRUCTION, ANY DAMAGE SHALL BE REPAIRED AT CONTRACTORS EXPENSE.
4. ALL NEW STRUCTURAL STEEL SHALL CONFORM TO AASHTO M-270, GR - 36.

REVISIONS	
NAME	DATE

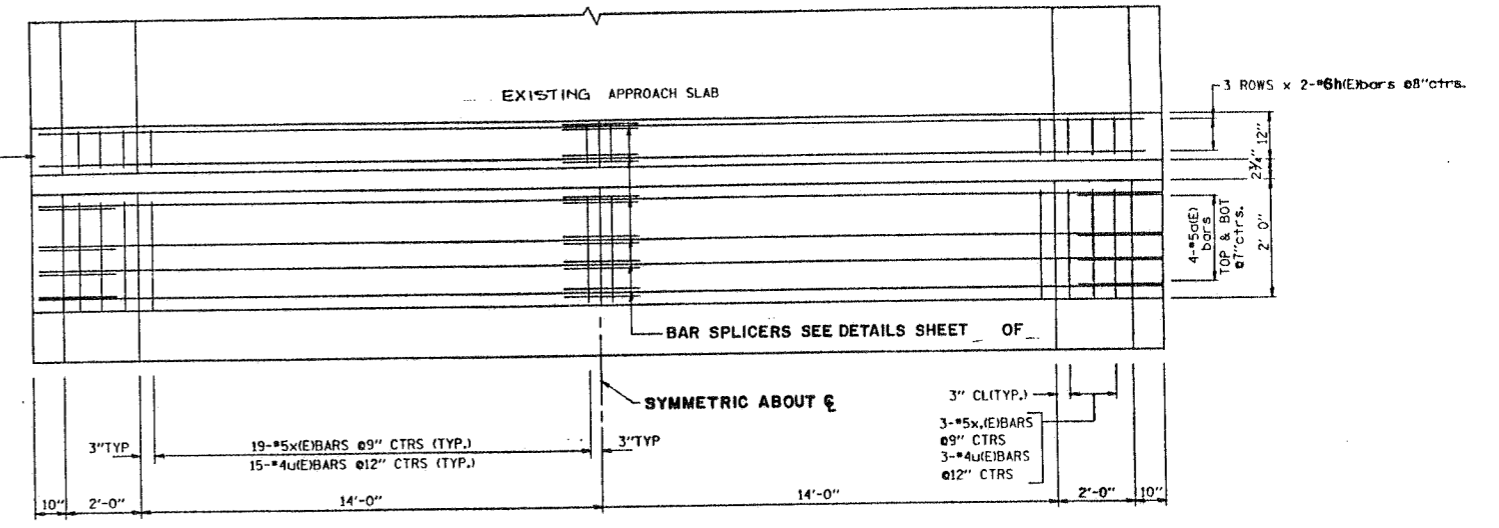
ILLINOIS DEPARTMENT OF TRANSPORTATION
 PLAN AND TYPICAL SECTION
 WOLF ROAD OVER INTERSTATE ROUTE 80
 STRUCTURE NUMBER 099-0192
 SCALE: VERT. NONE HORIZ. DRAWN BY CADD/M.V.T
 DATE 12/08/92 CHECKED BY J.A.F

P.A. NO.	SECTION	COUNTY	DIST. SHEET	TOTAL SHEETS
80	*	WILL	42	22
STA.	TO STA.			
POL. AND DIST. NO.	ILLINOIS	POL. AND DIST.		

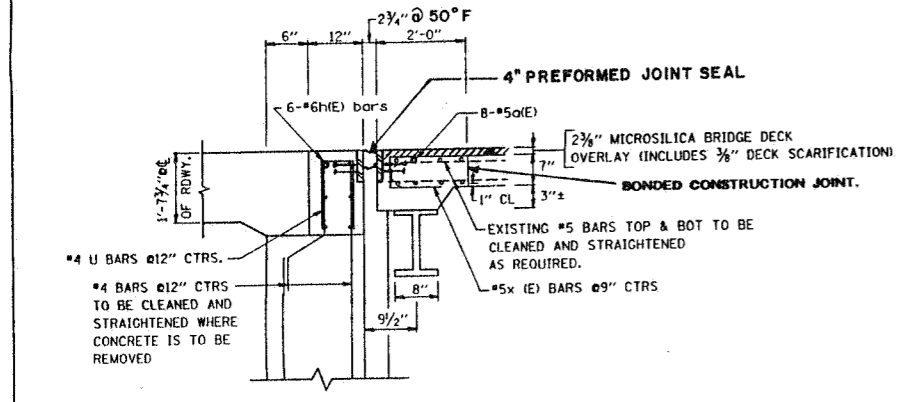
99-5(HB-4 & 1-HB-1)BR
SHEET S 11



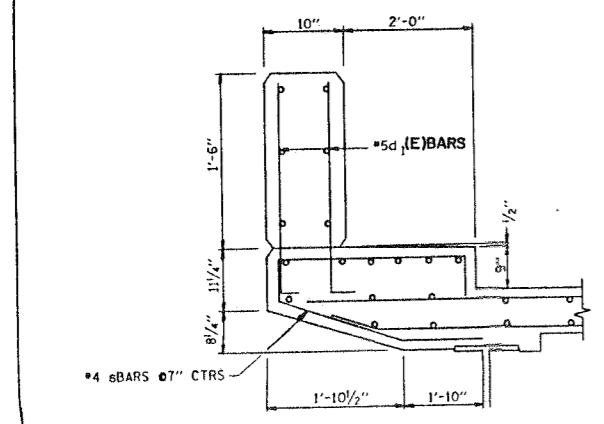
HORIZONTAL, VERTICAL AND STIRRUP BARS ON THE ABUTMENT PARAPET/WINGWALL ARE TO BE CLEANED AND STRAIGHTENED AS REQUIRED.



**PROPOSED EXPANSION JOINT
 PLAN VIEW
 (NORTH & SOUTH ABUTMENT)**

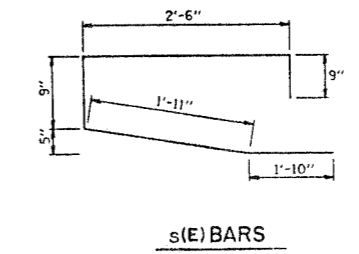
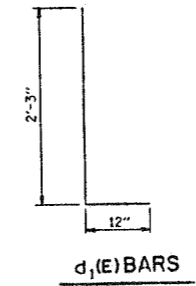
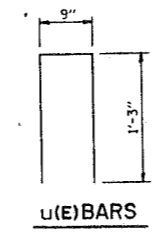
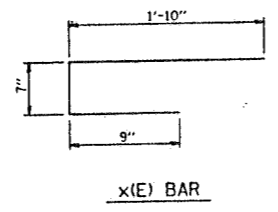


PROPOSED EXPANSION JOINT
 (1\"/>



EXISTING/PROPOSED PARAPET
 EXISTING HORIZONTAL BARS TO BE CLEANED AND STRAIGHTENED, AS REQUIRED.

LIMITS OF CONCRETE REMOVAL ON EXISTING PARAPET/WINGWALL/DECK/SIDEWALKS SHALL BE SAW CUT TO A DEPTH OF ±1\"/>



BILL OF MATERIALS				
BAR	NO.	SIZE	LENGTH	SHAPE
a(E)	32	5	16'-8"	
d1(E)	16	5	3'-3"	
h(E)	24	6	16'-8"	
s(E)	16	4	7'-0"	
u(E)	72	4	3'-3"	
x(E)	88	5	3'-2"	
ITEM			UNIT	QTY.
CONCRETE REMOVAL			Cu. Yds.	7.6
CLASS "X" CONCRETE SUPER STRUCTURE			Cu. Yds.	8.1
EPOXY COATED REINFORCEMENT			lbs	1950
PREFORMED JOINT SEAL 4"			LIN. FT.	66
FURN. AND ERECT. STRUCTURAL STEEL			lbs.	2820

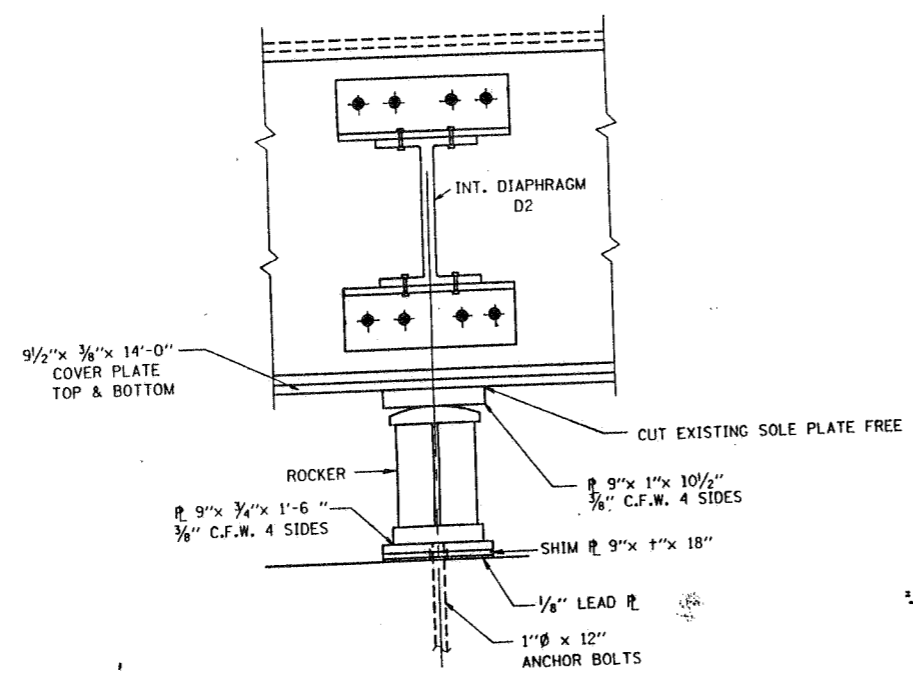
REVISIONS	
NAME	DATE

ILLINOIS DEPARTMENT OF TRANSPORTATION
 WOLF RD OVER INTERSTATE
 ROUTE 80
 EXPANSION JOINT DETAILS
 NORTH AND SOUTH ABUTMENTS
 S.N.099-0192
 SCALE: VERT. NONE HORIZ. DATE 12/07/92
 DRAWN BY CADD/M.V.T.
 CHECKED BY J.A.F.

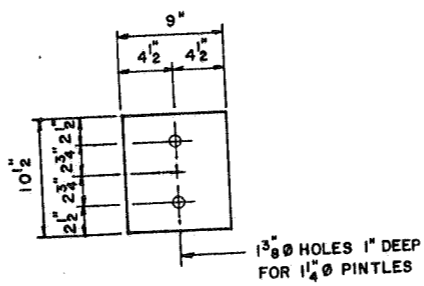
Mon Dec 07 11:23:16 1992
 d113291000.dgn Lvs:1-63
 VI=TYP

P. N. SHE.	SECTION	COUNTY	TOTAL SHEETS	SHEET NO.
80	*	WILL	42	23
STA. TO STA.				
* 99-5(HB-4 & 1-HB-11BR)				

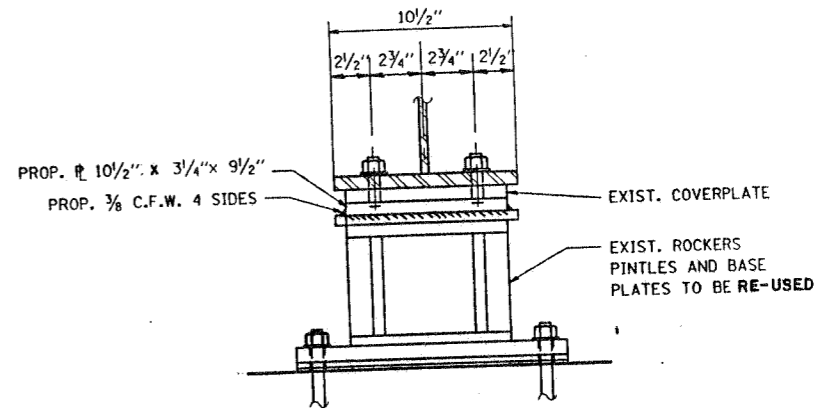
SHEET S 12



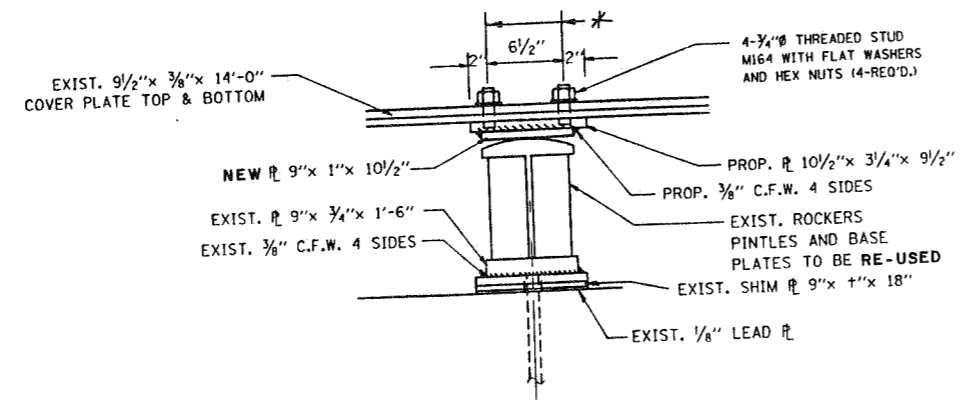
EXISTING PIER #2



NEW TOP PLATE
9" x 1" x 10 1/2"



PROPOSED FRONT FACE AT PIER #2



PROPOSED PIER #2

NOTES:

PROPOSED 10 1/2" x 3/4" x 9 1/2" PLATE TO BE ALIGNED ABOVE EXISTING CENTER OF BEARING. PROPOSED PLATE SHALL BE A.A.S.H.T.O., M-270, GR-36. FOR JACKING INFORMATION AND THE DETAILS OF EXISTING BEARINGS SEE SHEET S15.
CONTRACTOR SHALL SUBMIT JACKING DETAILS FOR APPROVAL BY THE BRIDGE OFFICE.

- FOR BROKEN, RUSTED OUT OR MISALIGNED BOLTS, PINTLES AND ANCHOR BOLTS WHICH NEED TO BE REPLACED OR REALIGNED, THE COST IS INCIDENTAL TO JACKING EXISTING SUPERSTRUCTURE.
- USE THE AIR-ARC METHOD TO CUT THE EXISTING SOLE PLATE FROM THE BOTTOM FLANGE. GRIND SMOOTH ALL WELD MATERIAL REMAINING ON THE BOTTOM FLANGE. COST IS INCIDENTAL TO FURNISHING AND ERECTING STRUCTURAL STEEL.

TWO 1/8" ADJUSTING SHIMS OF THE DIMENSIONS OF THE PROPOSED PLATES SHALL BE PROVIDED FOR EACH BEARING.

* 7/8" DIA HOLES FOR 3/4" DIA BOLTS IN BOTTOM FLANGE AND COVER PLATE TO BE DRILLED IN THE FIELD. COST INCIDENTAL TO FURNISHING AND ERECTING STRUCTURAL STEEL.

BILL OF MATERIAL

ITEM	UNIT	TOTAL
FURNISH AND ERECT STRUCTURAL STEEL	LBS.	760
JACKING EXISTING SUPERSTRUCTURE	L.S.	0.5

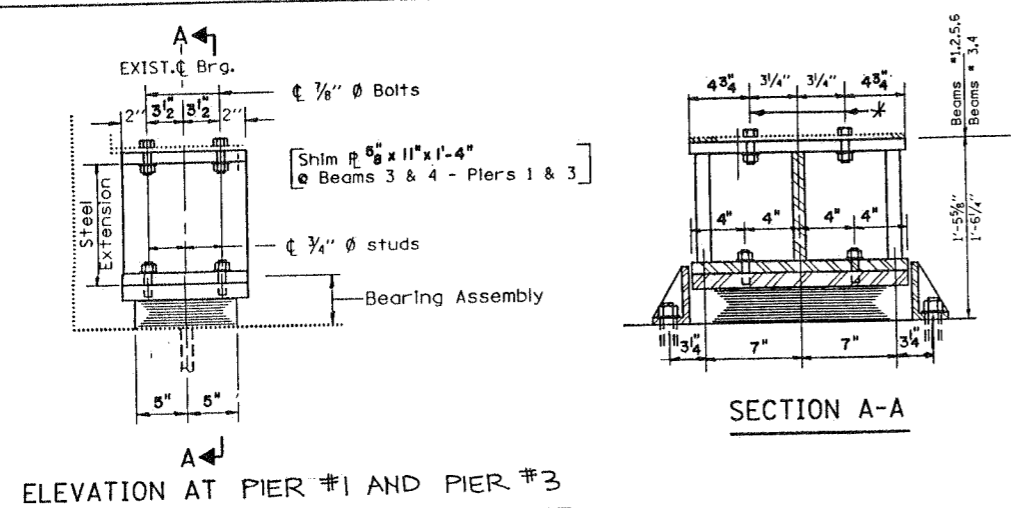
REVISIONS	
NAME	DATE

ILLINOIS DEPARTMENT OF TRANSPORTATION
WOLF ROAD OVER INTERSTATE ROUTE 80
FIXED BEARING
S.N.099-0192
SCALE: VERT. NONE
DATE 11/24/92
DRAWN BY CADD/M.V.T.
CHECKED BY J.A.F.

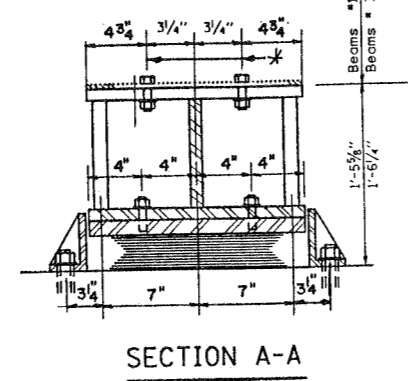
STA.	SECTION	COUNTY	TOTAL SHEETS	SHEET NO.
80	*	WILL	42	24
STA. TO STA.		PUB. ROAD DIST. NO.		
		PUB. AID PROJECT		

99-5(HB-4 & 1-HB-1)BR
SHEET S 13

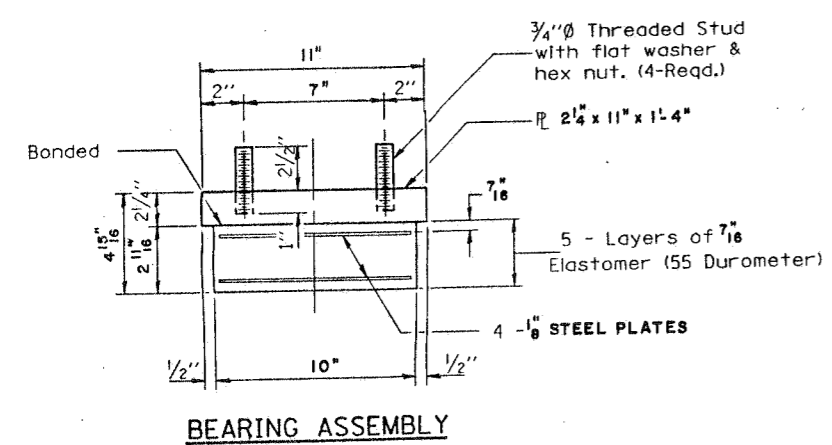
STATE OF ILLINOIS
DEPARTMENT OF TRANSPORTATION



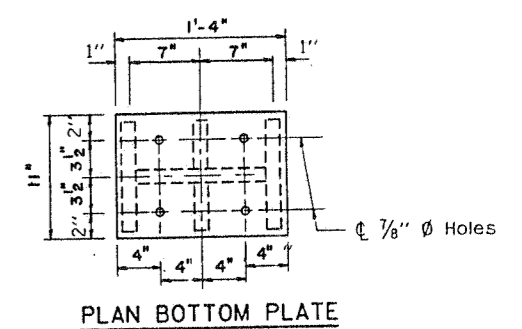
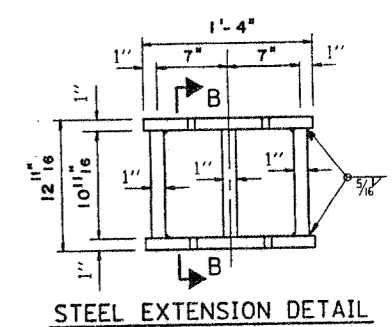
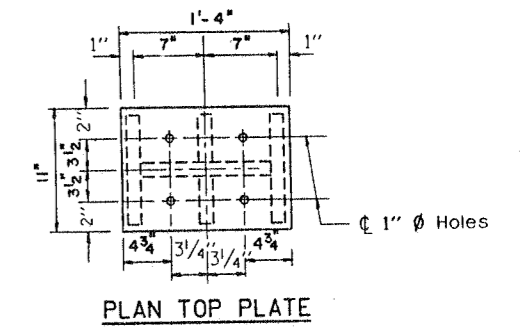
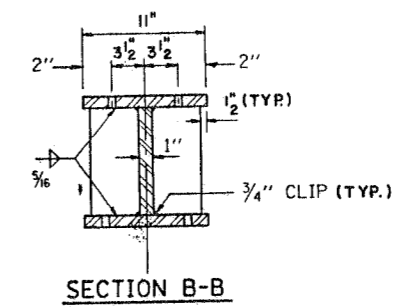
TYPE I ELASTOMERIC EXP. BRG.



- NOTES:
- BEFORE INSTALLING THE NEW BEARING, REMOVE THE TOP PLATE OF THE EXISTING BEARING ASSEMBLY FROM THE BOTTOM FLANGE USING THE AIR-ARC METHOD AND GRIND SMOOTH ALL WELD MATERIAL REMAINING ON THE BOTTOM FLANGE. BURN EXISTING ANCHOR BOLTS FLUSH WITH EXISTING CONCRETE SURFACE. GRIND EXISTING ANCHOR BOLT SMOOTH AND SEAL WITH EPOXY. COST IS INCIDENTAL TO FURNISHING AND ERECTING STRUCTURAL STEEL.
 - DIAPHRAGM REMOVAL AND REPLACEMENT MAY BE REQUIRED TO FACILITATE DRILLING HOLES IN BOTTOM FLANGE FOR BEARING ATTACHMENT. COST IS INCIDENTAL TO FURNISHING AND ERECTING STRUCTURAL STEEL.
- NEW STEEL EXTENSIONS, SIDE RETAINERS CONNECTION BOLTS AND ANCHOR BOLTS ARE INCLUDED IN FURNISHING AND ERECTING STRUCTURAL STEEL. SEE SHEET S 23 FOR ANCHOR BOLT INSTALLATION.
- * 1" Ø HOLES FOR 7/8" Ø BOLTS IN BOTTOM FLANGE TO BE DRILLED IN THE FIELD. COST INCIDENTAL TO FURNISHING AND ERECTING STRUCTURAL STEEL.

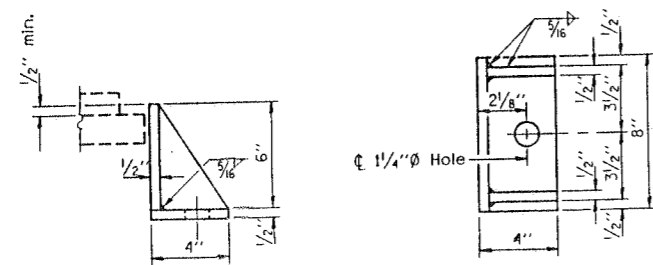


Note: Shim plates shall not be placed under Bearing Assembly.

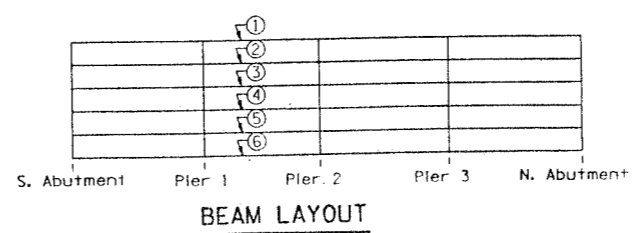


GIRDER REACTIONS

R DL	(K)	44.6
R LL	(K)	43.0
Imp.	(K)	12.0
R (Total)	(K)	99.6



Equivalent rolled angle with stiffeners will be allowed in lieu of welded plates. Weight included with Structural Steel.



BILL OF MATERIAL

Item	Unit	Total
Elastomeric Bearing Assembly Type I	Each	12
Furn. and Erect Structural Steel	Lbs	4580

REVISIONS	
NAME	DATE

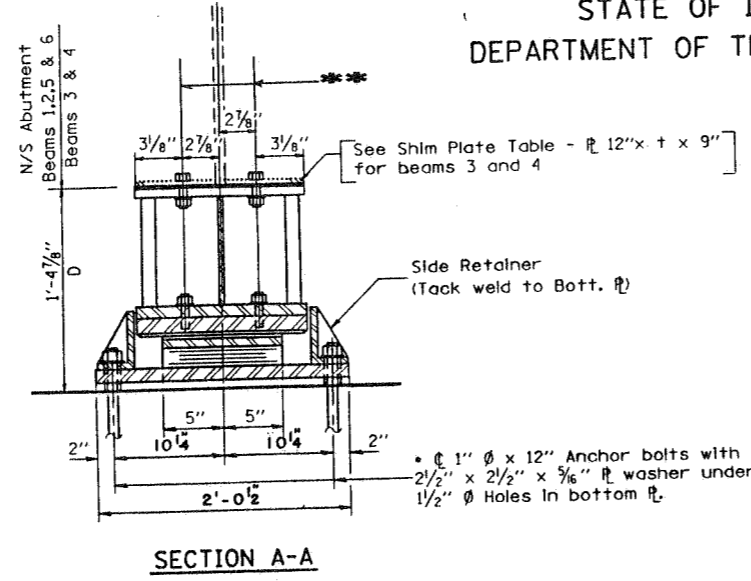
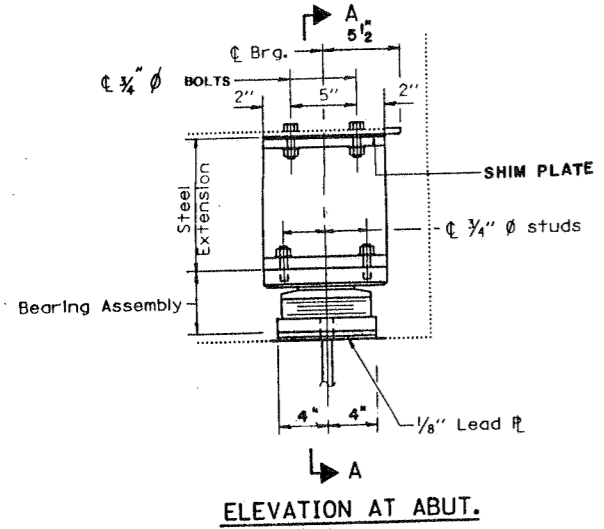
ILLINOIS DEPARTMENT OF TRANSPORTATION
WOLF ROAD OVER
INTERSTATE ROUTE 80
PIERS #1 & 3
ELASTOMERIC BEARING DETAILS
S.N.099-0192
SCALE: VERT. NONE
HORIZ. DATE 12/07/92
DRAWN BY CADD/M.V.T.
CHECKED BY J.A.F.

STATE OF ILLINOIS
DEPARTMENT OF TRANSPORTATION

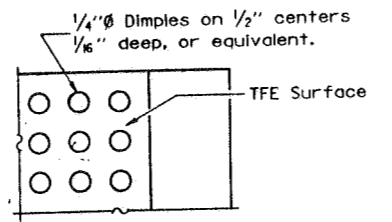
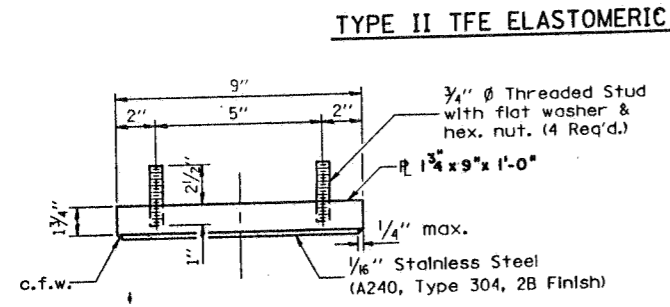
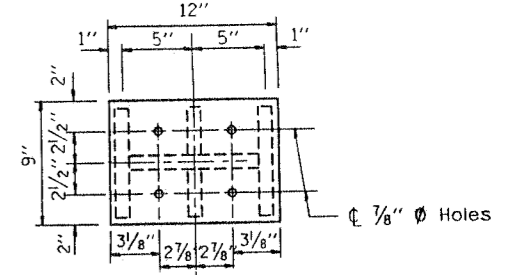
GIRDER REACTIONS

R DL (K)	10.6
R LL (K)	35.0
Imp. (K)	10.5
R (Total) (K)	56.1

SECTION	COUNTY	TOTAL SHEETS	SHEET NO.
80	WILL	42	25
TO STA.			
99-5(HB-4 & 1-HB-1)BR			
SHEET S 14			

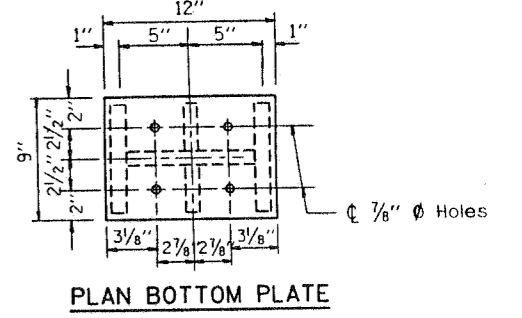
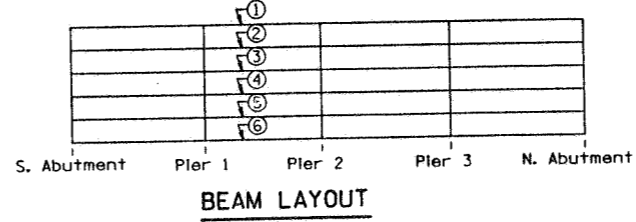
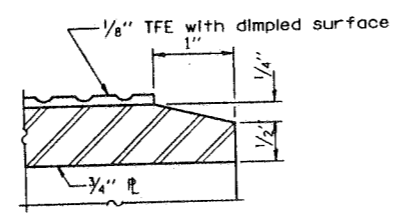
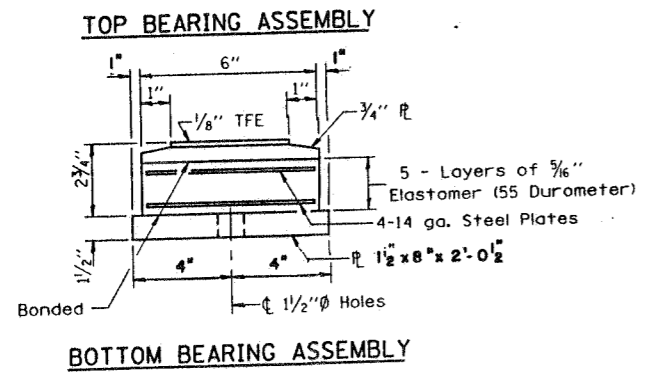
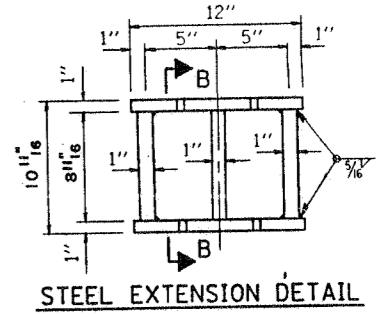
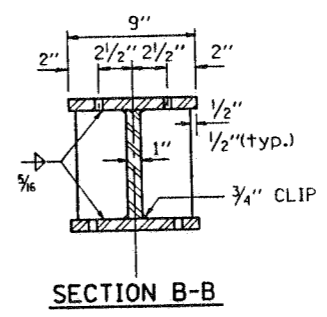


Notes: New steel extensions, side retainers, lead plates, connection bolts and anchor bolts are included in "Furn. and Erect Structural Steel".
see sheet S 23 for Anchor Bolt Installation.



SHIM PLATE TABLE

At Beams 3 & 4	t	D
North Abutment	3/8"	17 1/2"
South Abutment	3/4"	17 5/8"



Note: The 1/8" TFE sheet shall be bonded directly to the top steel plate with a two-component, medium viscosity epoxy resin, conforming to the requirements of the Federal Specification MMM-A-134, Type I. The bond agent shall be applied on the full area of the contact surfaces.

Bonding of 1/8" TFE sheet during vulcanizing process will be permitted provided the process and method of adjusting assembly height is approved by the Engineer.

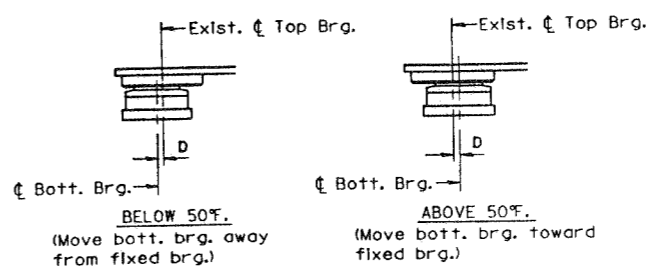
BILL OF MATERIAL

Item	Unit	Total
Elastomeric Bearing Assembly Type II	Each	12
Furn. and Erect Structural Steel	Lbs	3680

ILLINOIS DEPARTMENT OF TRANSPORTATION
WOLF ROAD OVER
INTERSTATE ROUTE 80
NORTH & SOUTH ABUTMENT
ELASTOMERIC BEARING DETAIL
SCALE: VERT. NONE HORIZ. S.N.099-0192
DATE 12/07/92

NOTES:

- BEFORE INSTALLING THE NEW BEARING, REMOVE THE TOP PLATE OF THE EXISTING BEARING ASSEMBLY FROM THE BOTTOM FLANGE USING THE AIR-ARC METHOD AND GRIND SMOOTH ALL WELD MATERIAL REMAINING ON THE BOTTOM FLANGE. BURN EXISTING ANCHOR BOLTS FLUSH WITH EXISTING CONCRETE SURFACE. GRIND EXISTING ANCHOR BOLT SMOOTH AND SEAL WITH EPOXY. COST IS INCIDENTAL TO FURNISHING AND ERECTING STRUCTURAL STEEL.
- DIAPHRAGM REMOVAL AND REPLACEMENT MAY BE REQUIRED TO FACILITATE DRILLING HOLES IN BOTTOM FLANGE FOR BEARING ATTACHMENT. COST IS INCIDENTAL TO FURNISHING AND ERECTING STRUCTURAL STEEL.
- TWO 10" ADJUSTING SHIMS OF THE DIMENSIONS OF THE STEEL EXTENSION SHALL BE PROVIDED FOR EACH BEARING (BEAM) NOT LISTED IN THIS TABLE.
- 1/8" HOLES FOR 3/8" BOLTS IN BOTTOM FLANGE TO BE DRILLED IN THE FIELD. COST INCIDENTAL TO FABRICATION & ERECTION OF STRUCTURAL STEEL.



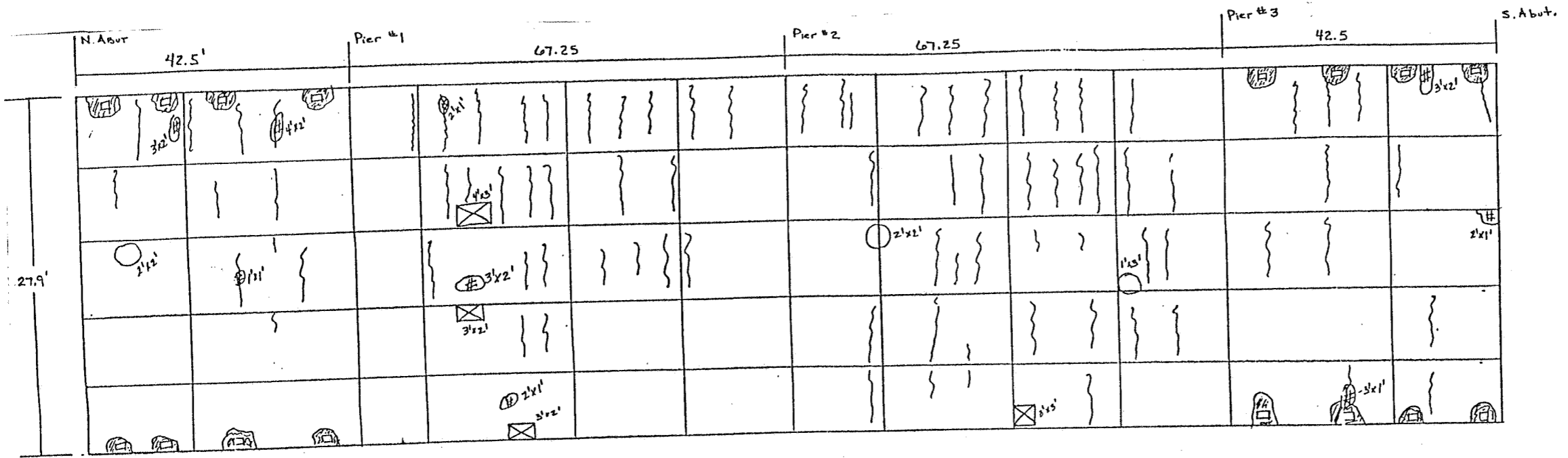
REVISIONS

NAME	DATE

SECTION	COUNTY	TOTAL SHEETS	SHEET NO.
80	WILL	42	27
STA. TO STA.		FED. ROAD DIST. NO. 7 ILLINOIS FED. AID PROJECT	

99-5(HB-4 & 1-HB-1)BR
SHEET S 16

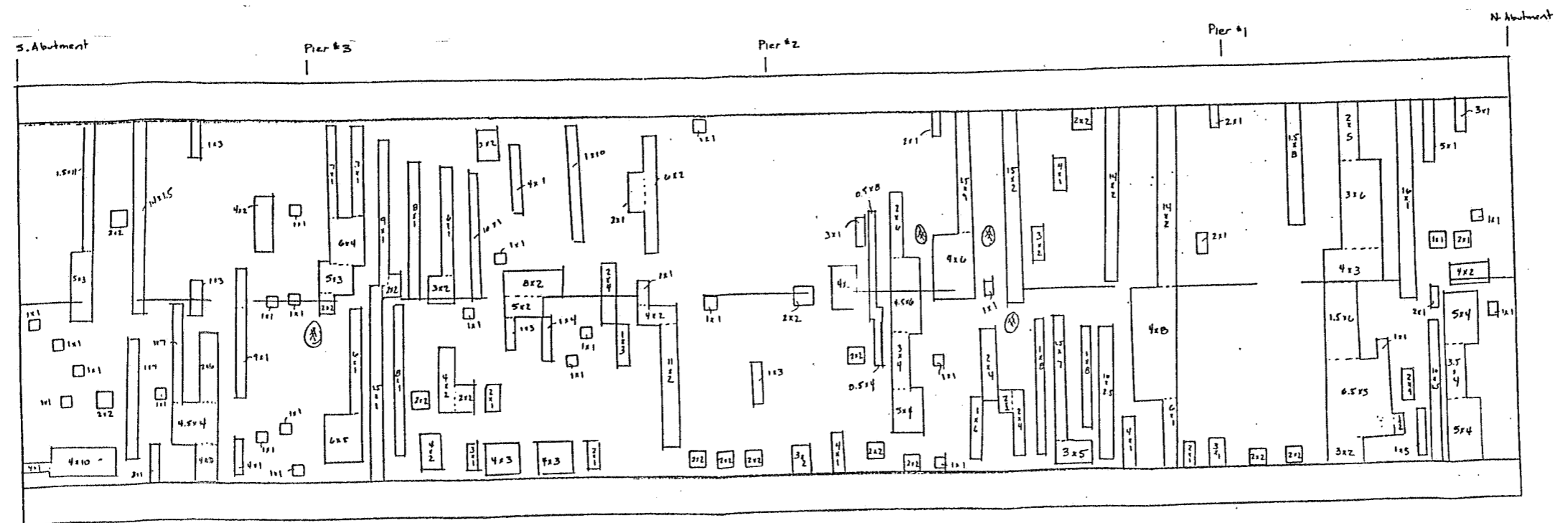
Bridge: Wolf Road/Interstate Route 80
Structure No. 099-0192
Top/Bottom Deck Crack Survey
Field Data: SW Date: 03/19/91
Drawn By: SW Date: 03/20/91



BOTTOM DECK CRACK SURVEY: WOLF ROAD OVER I-80

LEGEND

- Deck Drains
- ⊗ Leaching Areas
- ⌋ Leaching Cracks
- ◻ Previous Patches (FD 1.2 Sq Yd/PD 130 Sq Yd)
- ⊕ Existing Spalled Areas (4 Sq Yd)
- ⊗ Plywood



TOP DECK CRACK SURVEY: WOLF ROAD OVER I-80

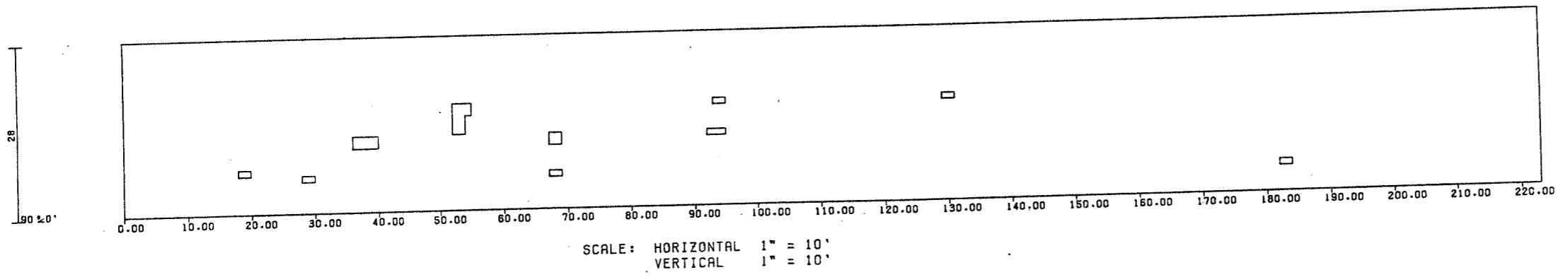
Note: Patching is to be marked in the field at the discretion of Resident Engineer
Deck Slab Repairs:
Partial Depth patching 25 Sq Yds
Full Depth Patching Type I 10 Sq Yds
FULL DEPTH PATCHING TYPE II 7 SQ.YD.

REVISIONS	
NAME	DATE

ILLINOIS DEPARTMENT OF TRANSPORTATION
INTERSTATE ROUTE 80
OVER WOLF ROAD
DECK SLAB REPAIR PLAN
S.N.099-0192
SCALE: VERT. DRAWN BY CADD/MVT
HORIZ. CHECKED BY J.A.F.
DATE

SECTION	COUNTY	TOTAL SHEETS	SHEET NO.
80	WILL	42	28
STA		TO STA	
FED ROAD DIST NO 7		FED AID PROJECT	

* 99-5(HB-4&I-HB-1)BR
SHEET S 17



BRIDGE: 099-0192
 DATE: 03/02/93
 OPERATOR: RM
 COMMENTS: WOLF RD / I-80 S ABUT SE CORNER
 NO SKEW
 ROADWAY AREA: 694 SY
 DELAMINATED AREA: 4 SY
 % DELAMINATED: 1 %

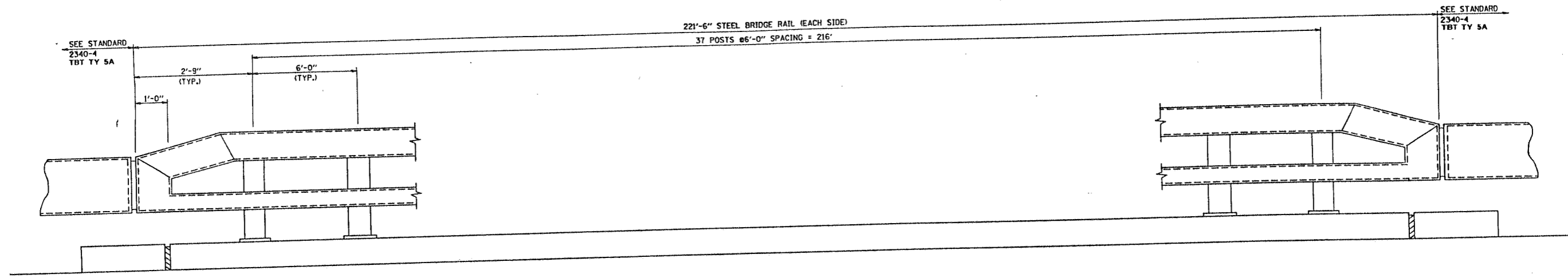
REVISIONS	
NAME	DATE

ILLINOIS DEPARTMENT OF TRANSPORTATION
 WOLF ROAD OVER
 INTERSTATE ROUTE 80
 DELAMINATION PLAN
 S.N. 099-0192
 SCALE VERT. DRAWN BY J.A.F.
 HORIZ CHECKED BY M.V.
 DATE

S. A. H. INDUSTRIES 141317

P.L. FILE	SECTION	COUNTY	TOTAL SHEETS	SHEET NO.
80	*	WILL	42	29
STA.		TO STA.		
P.L. ROAD DIST. NO.		BLDG. NO.	P.L. AND PROJECT	

99-5(HB-4 & 1-HB-1)BR
SHEET S 18



ELEVATION

NOTES:
FOR INSTALLATION AND BRIDGE RAIL DETAILS
SEE STANDARD 2399-2.
FOR TERMINATION OF BRIDGE RAIL
SEE STANDARD 2340-4.

Tue Nov 24 17:19:09 1992
dlj329100.dgn LV=1-63

VI=TYP

REVISIONS	
NAME	DATE

ILLINOIS DEPARTMENT OF TRANSPORTATION

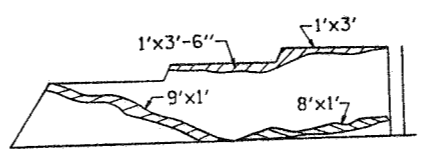
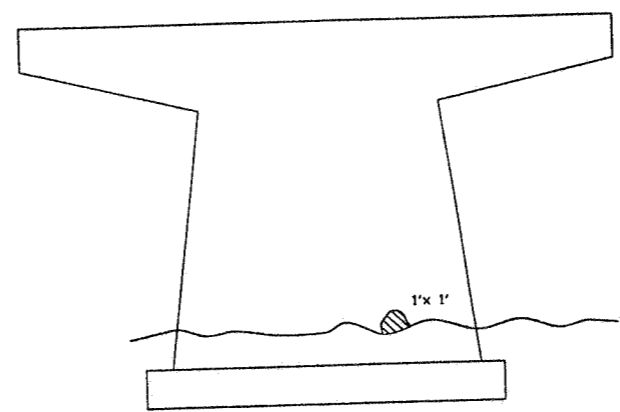
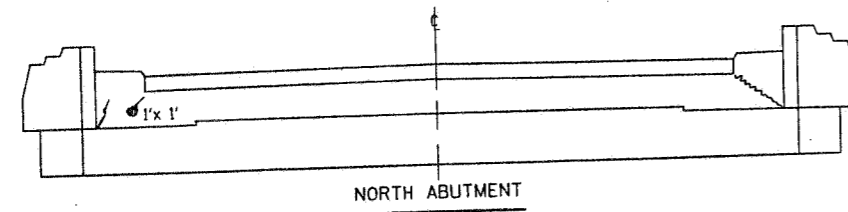
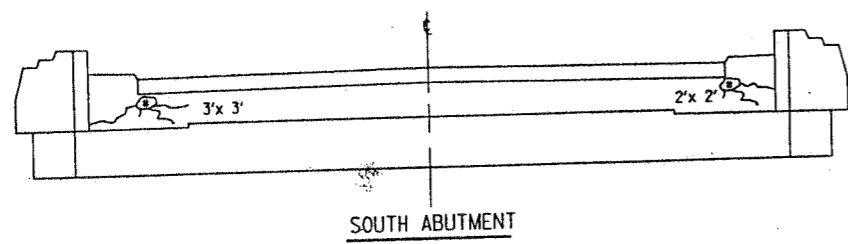
WOLF ROAD OVER
INTERSTATE ROUTE 80
STEEL BRIDGE RAIL PLAN
SN.099-0192

SCALE: VERT. NONE
HORIZ. NONE
DATE 11/24/92

DRAWN BY CADD/MVT
CHECKED BY J.A.F

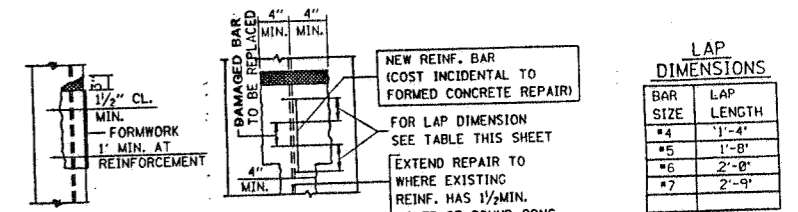
BILL OF MATERIAL

Item	Unit	Total
FORMED CONCRETE REPAIR (DEPTH EQUAL TO OR LESS THAN 5")	SO.FT.	15.0
FORM CONCRETE REPAIR (DEPTH GREATER THAN 5")	SO.FT.	25.0
EPOXY CRACK SEALING	LIN.FT.	200



LEGEND

- INDICATES EPOXY CRACK SEALING
- INDICATES FORMED CONCRETE REPAIR



NOTE:
EXISTING REINFORCEMENT HAVING 10% OR MORE OF CROSS SECTIONAL AREA LOST DUE TO CORROSION OR DAMAGED DURING CONC. REMOVAL SHALL BE REPLACED BY NEW REINFORCEMENT LAPPED AS SHOWN OR NOTED.

NEW REINF. BAR (COST INCIDENTAL TO FORMED CONCRETE REPAIR)
FOR LAP DIMENSION SEE TABLE THIS SHEET
EXTEND REPAIR TO WHERE EXISTING REINF. HAS 1/2" MIN. COVER OF SOUND CONC. (SEE SPECIAL PROVISION)

LAP DIMENSIONS

BAR SIZE	LAP LENGTH
#4	1'-4"
#5	1'-8"
#6	2'-0"
#7	2'-9"

REVISIONS	
NAME	DATE

ILLINOIS DEPARTMENT OF TRANSPORTATION

WOLF ROAD OVER
INTERSTATE ROUTE 80
SUBSTRUCTURE REPAIR

S.N.099-0192

SCALE: VERT. NONE
HORIZ. DATE 12/01/92

DRAWN BY CADD/MVT
CHECKED BY J.A.F.