

STATE OF ILLINOIS  
DEPARTMENT OF TRANSPORTATION

F.A.I. RTE.	SECTION	COUNTY	TOTAL SHEETS	SHEET NO.
55 5	(68-4) R-RS	MONTGOMERY	20	1
		ILLINOIS	CONTRACT NO. 72L63	

FOR INDEX OF SHEETS, SEE SHEET NO. 2

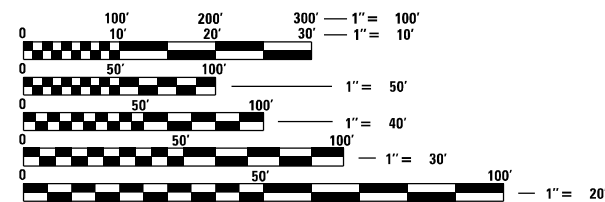
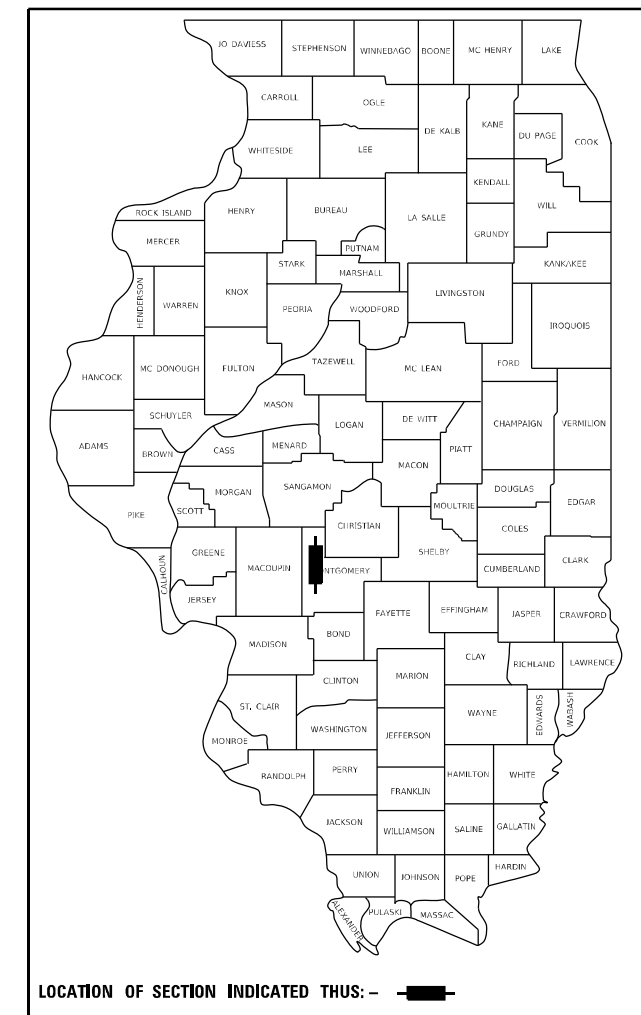
# PROPOSED HIGHWAY PLANS

## FAI ROUTE 55 (I-55 E FRONTAGE ROAD) SECTION (68-4) R-RS

### AGGREGATE BASE COURSE & CHIP SEAL MONTGOMERY COUNTY

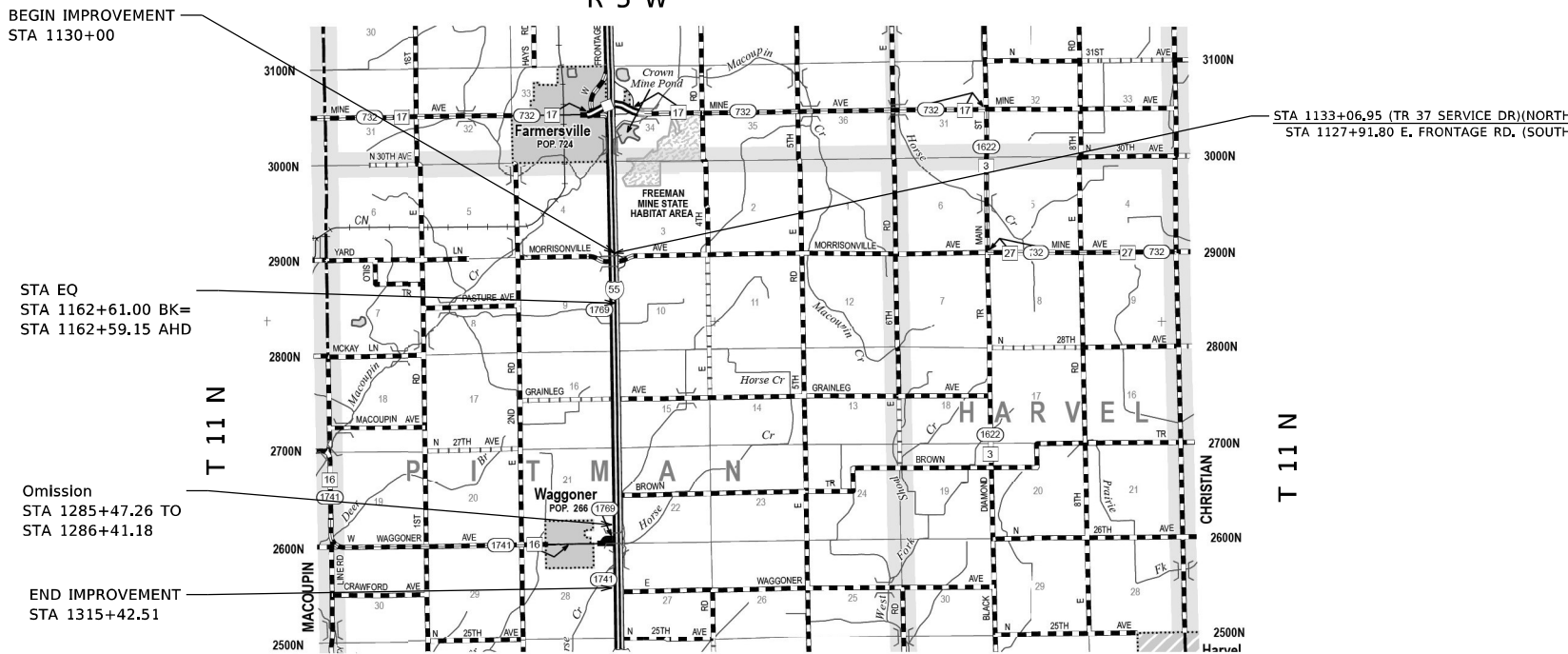
C-96-048-20

D-96-028-20



FULL SIZE PLANS HAVE BEEN PREPARED USING STANDARD ENGINEERING SCALES, REDUCED SIZED PLANS WILL NOT CONFORM TO STANDARD SCALES. IN MAKING MEASUREMENTS ON REDUCED PLANS, THE ABOVE SCALES MAY BE USED.

J.U.L.I.E.  
JOINT UTILITY LOCATION INFORMATION FOR EXCAVATORS  
1-800-892-0123  
OR 811



PROJECT ENGINEER: BRIAN LANINGHAM (217)782-6990  
PROJECT MANAGER: VICTOR YOUNG (217)524-0472

GROSS LENGTH =  
NET LENGTH = 18,818.97 FT. = 3.56 MILE

CONTRACT NO. 72L63

FUNCTIONAL CLASSIFICATION: LOCAL  
ADT 75 (2020)  
MU = 12.0%, SU = 13.33%, PV = 74.67%

STATE OF ILLINOIS  
DEPARTMENT OF TRANSPORTATION

SUBMITTED February 10 20 22

*[Signature]* REGIONAL ENGINEER

March 25 2022  
*[Signature]* ENGINEER OF DESIGN AND ENVIRONMENT

March 25 2022  
*[Signature]* DIRECTOR OF HIGHWAYS PROJECT IMPLEMENTATION

PRINTED BY THE AUTHORITY  
OF THE STATE OF ILLINOIS

**GENERAL NOTES**

1. THE FOLLOWING RATES OF APPLICATION HAVE BEEN USED TO CALCULATE THE PLAN QUANTITIES:  
GRANULAR MATERIALS  
 AGGREGATE BASE COURSE, TY A= 2.05 TONS / CU YD
2. BITUMINOUS SURFACE TREATMENT  
 BITUMINOUS MATERIALS (FOG SEAL) = 0.05 LBS / SQ FT
3. THE CONTRACTOR SHALL NOTIFY THE DISTRICT 6 BUREAU OF OPERATION AT  
 (217) 785-5312 THREE WEEKS PRIOR TO IMPLEMENTING ANY TRAFFIC CONTROL.
4. SEAL COAT AGGREGATE MAY BE CA-14, CA-15, CA-16, OR CA-20.




**INDEX OF SHEETS**

- 1 COVER SHEET
- 2 GENERAL NOTES
- 3-4 SUMMARY OF QUANTITIES
- 5 TYPICAL SECTION
- 6-9 SCHEDULES OF QUANTITIES
- 10-17 PLANS
- 18-20 DETAILS

**COMMITMENTS**

**HIGHWAY STANDARDS**

- 000001-08 STANDARD SYMBOLS, ABBREVIATIONS AND PATTERNS
- 001006 DECIMAL OF AN INCH AND OF A FOOT
- 630001-12 STEEL PLATE BEAM GUARDRAIL
- 630301-09 SHOULDER WIDENING FOR TYPE 1 (SPECIAL) GUARDRAIL TERMINALS
- 701006-05 OFF ROAD OPERATIONS, 2L, 2W
- 701201-05 LANE CLOSURE, 2L, 2W, DAY ONLY, FOR SPEEDS >= 45 MPH
- 701311-03 LANE CLOSURE, 2L, 2W, MOVING OPERATIONS, DAY ONLY
- 701901-08 TRAFFIC CONTROL DEVICES
- 725001-01 OBJECT AND TERMINAL MARKERS
- 780001-05 TYPICAL PAVEMENT MARKINGS
- 782006-01 GUARDRAIL AND BARRIER WALL REFLECTOR MOUNTING DETAILS
- BLR 21-9 TYPICAL APPLICATION OF TRAFFIC CONTROL DEVICES FOR CONSTRUCTION ON RURAL LOCAL HIGHWAYS
- BLR 22-7 TYPICAL APPLICATION OF TRAFFIC CONTROL DEVICES FOR CONSTRUCTION ON RURAL LOCAL HIGHWAYS (2L, 2W RD CLOSED TO THRU TRAFFIC)
- 701001-02 OFF-ROAD OPERATIONS, 2L, 2W, MORE THAN 15' AWAY
- 701011-04 OFF-ROAD OPERATIONS, 2L, 2W, DAY ONLY
- 701301-04 LANE CLOSURE, 2L, 2W, SHORT TIME OPERATIONS

<b>STATE OF ILLINOIS DEPARTMENT OF TRANSPORTATION DIVISION OF HIGHWAYS DISTRICT 6</b>
EXAMINED <u>February 8</u> 20 <u>22</u>  ENGINEER OF OPERATIONS
EXAMINED <u>February 2</u> 20 <u>22</u>  ENGINEER OF PROJECT IMPLEMENTATION
EXAMINED <u>February 4</u> 20 <u>22</u>  ENGINEER OF PROGRAM DEVELOPMENT

REV. - MS

MODEL: Default  
 FILE: Mainfile: p:\u\dot-zw-bentley.com\p\id\dot Documents\DOT Offices\District 6\Projects\067163\CAD\data\CADsheets\067163-sheet-general.dgn

USER NAME = RoherTM	DESIGNED -	REVISED -	<b>STATE OF ILLINOIS DEPARTMENT OF TRANSPORTATION</b>	<b>GENERAL NOTES</b>	SCALE:	SHEET	OF	SHEETS	STA.	TO STA.	F.A.I. RTE.	SECTION	COUNTY	TOTAL SHEETS	SHEET NO.		
PLOT SCALE = 100.0000' / in.	DRAWN -	REVISED -			(68-4) R-RS	MONTGOMERY		20	2	CONTRACT NO. 72L63		ILLINOIS	FED. AID PROJECT				
PLOT DATE = 2/9/2022	CHECKED -	REVISED -															
	DATE -	REVISED -															

CONSTR. CODE

6-01416-0000

100% STATE

ROADWAY

0005

RURAL

CODE NO.	ITEM	UNIT	TOTAL QUANTITY	
35100100	AGGREGATE BASE COURSE, TYPE A	TON	11560	11560
35100600	AGGREGATE BASE COURSE, TYPE A 7"	SQ YD	238	238
40600982	HOT-MIX ASPHALT SURFACE REMOVAL - BUTT JOINT	SQ YD	1351	1351
40600990	TEMPORARY RAMP	SQ YD	283	283
44000100	PAVEMENT REMOVAL	SQ YD	238	238
* 63000003	STEEL PLATE BEAM GUARDRAIL, TYPE A, 9 FOOT POSTS	FOOT	1400	1400
* 63100167	TRAFFIC BARRIER TERMINAL, TYPE 1 (SPECIAL) TANGENT	EACH	2	2
63200310	GUARDRAIL REMOVAL	FOOT	1494	1494
67100100	MOBILIZATION	L SUM	1	1
70100450	TRAFFIC CONTROL AND PROTECTION, STANDARD 701201	L SUM	1	1
* 72501000	TERMINAL MARKER - DIRECT APPLIED	EACH	2	2
* 78001120	PAINT PAVEMENT MARKING - LINE 5"	FOOT	4,684	4,684
X7011800	TRAFFIC CONTROL AND PROTECTION, STANDARD BLR 21	L SUM	1	1
X7011801	TRAFFIC CONTROL AND PROTECTION, STANDARD BLR 22	L SUM	1	1

\* SPECIALTY ITEM

REV. - MS

MODEL: Default  
FILE NAME: p:\illicad\sw Bentley.com PWD\DOT\Documents\DOT Office\District 6\Projects\67163\CADD\plan\CD\sheet67163-ent-500.dgn

USER NAME = RobertM	DESIGNED -	REVISED -
	DRAWN -	REVISED -
PLOT SCALE = 100.0000' / in.	CHECKED -	REVISED -
PLOT DATE = 2/9/2022	DATE -	REVISED -

**STATE OF ILLINOIS  
DEPARTMENT OF TRANSPORTATION**

**SUMMARY OF QUANTITIES**

SCALE: SHEET OF SHEETS STA. TO STA.

F.A.I. RTE.	SECTION	COUNTY	TOTAL SHEETS	SHEET NO.
55 5	(68-4) R-RS	MONTGOMERY	20	3
			CONTRACT NO. 72L63	
ILLINOIS FED. AID PROJECT				

CONSTR. CODE
6-01416-0000
100% STATE

CODE NO.	ITEM	UNIT	TOTAL QUANTITY	ROADWAY	
				0005	RURAL
70107025	CHANGEABLE MESSAGE SIGN	CAL DA	240	240	
X0300010	BITUMINOUS MATERIALS (FOG SEAL)	POUND	19,184.20	19,184.20	
78200005	GUARDRAIL REFLECTORS, TYPE A	EACH	30	30	
X1500005	BITUMINOUS SURFACE TREATMENT A2	SQ YD	42,631.60	42,631.60	

MODEL: Default  
 FILE NAME: p:\illicscw\benley.com\p\DOT\Documents\DOT\_Offices\District\_6\Projects\67163\CADD\plan\CD\Sheets\67163-ent-500.dgn

REV. - MS

USER NAME = RoherTM	DESIGNED -	REVISED -	<b>STATE OF ILLINOIS DEPARTMENT OF TRANSPORTATION</b>	<b>SUMMARY OF QUANTITIES</b>				F.A.I. RTE.	SECTION	COUNTY	TOTAL SHEETS	SHEET NO.		
PLOT SCALE = 100.0000' / in.	DRAWN -	REVISED -		SCALE:	SHEET	OF	SHEETS	STA.	TO STA.	55 5	(68-4) R-RS	MONTGOMERY	20	4
PLOT DATE = 2/9/2022	CHECKED -	REVISED -												
	DATE -	REVISED -												
												ILLINOIS   FED. AID PROJECT		





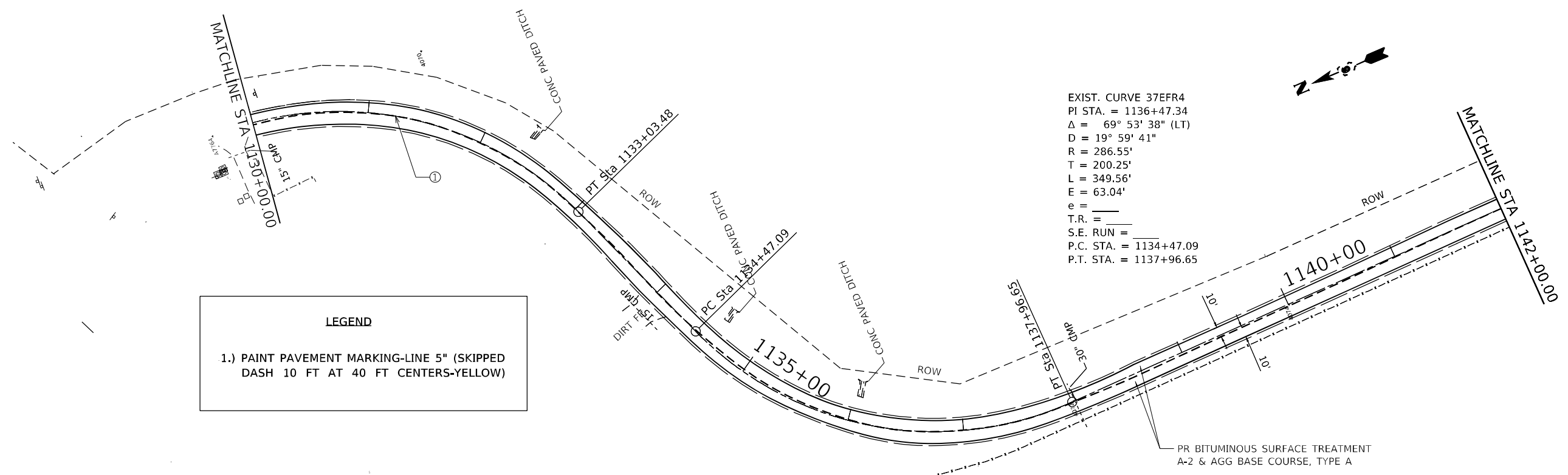








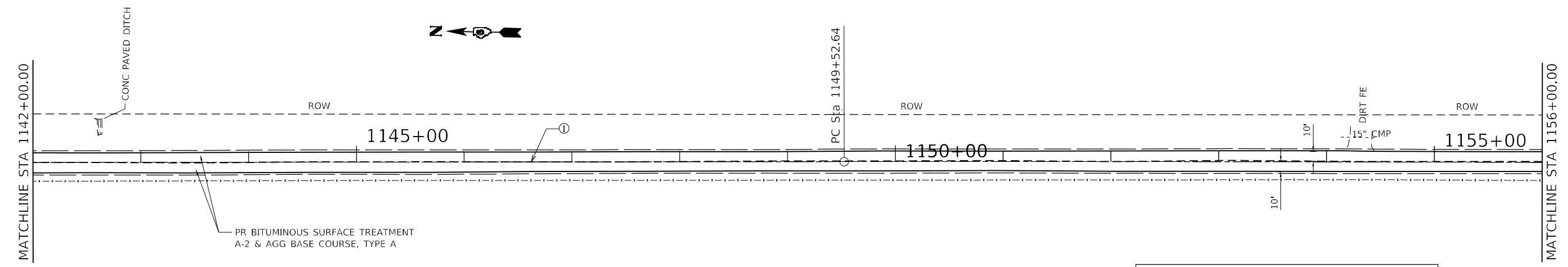




EXIST. CURVE 37EFR4  
 PI STA. = 1136+47.34  
 $\Delta = 69^\circ 53' 38''$  (LT)  
 $D = 19^\circ 59' 41''$   
 $R = 286.55'$   
 $T = 200.25'$   
 $L = 349.56'$   
 $E = 63.04'$   
 $e =$   
 $T.R. =$   
 $S.E. RUN =$   
 $P.C. STA. = 1134+47.09$   
 $P.T. STA. = 1137+96.65$

**LEGEND**  
 1.) PAINT PAVEMENT MARKING-LINE 5" (SKIPPED DASH 10 FT AT 40 FT CENTERS-YELLOW)

PR BITUMINOUS SURFACE TREATMENT  
 A-2 & AGG BASE COURSE, TYPE A



**LEGEND**  
 1.) PAINT PAVEMENT MARKING-LINE 5" (SKIPPED DASH 10 FT AT 40 FT CENTERS-YELLOW)

MODEL: Default  
 FILE NAME: p:\project\paw\_bentley.com\p\illdot\documents\illdot\_offices\dir\dr\_6\project\0672163\cadd\data\caddsheet\72163\p1e-fr151.dgn

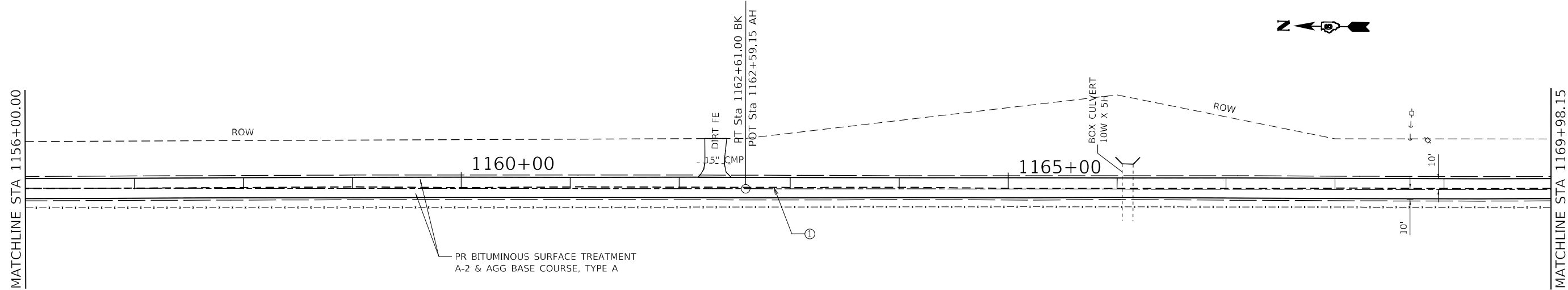
USER NAME = RoberTM	DESIGNED -	REVISED -
	DRAWN -	REVISED -
PLOT SCALE = 100,0000' / in.	CHECKED -	REVISED -
PLOT DATE = 2/9/2022	DATE -	REVISED -

**STATE OF ILLINOIS  
 DEPARTMENT OF TRANSPORTATION**

**I 55 EAST FRONTAGE ROAD**

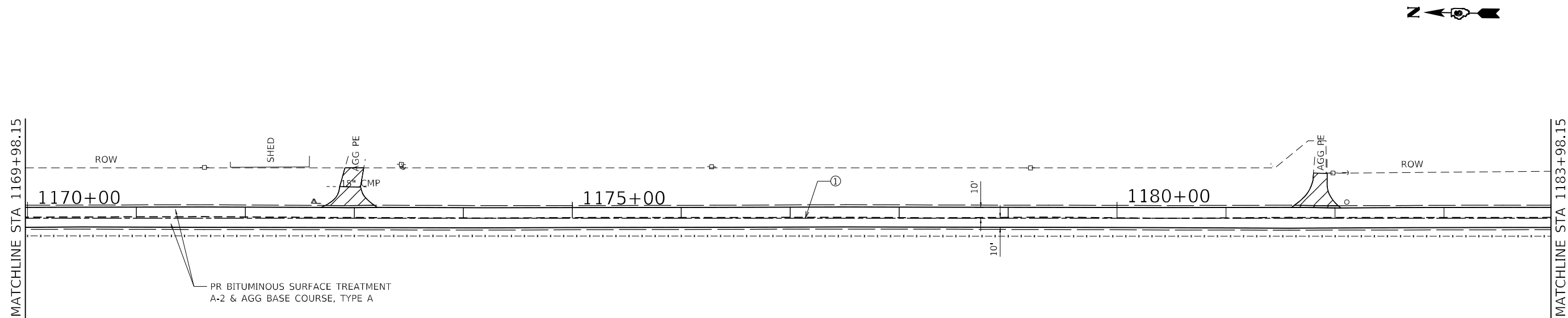
SCALE: SHEET OF SHEETS STA. TO STA.

F.A.I. RTE.	SECTION	COUNTY	TOTAL SHEETS	SHEET NO.
55 5	(68-4) R-RS	MONTGOMERY	20	11
CONTRACT NO. 72L63				
ILLINOIS FED. AID PROJECT				



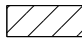
**LEGEND**

1.) PAINT PAVEMENT MARKING-LINE 5" (SKIPPED  
DASH 10 FT AT 40 FT CENTERS-YELLOW)



**LEGEND**

1.) PAINT PAVEMENT MARKING-LINE 5" (SKIPPED  
DASH 10 FT AT 40 FT CENTERS-YELLOW)

 BUTT JOINT

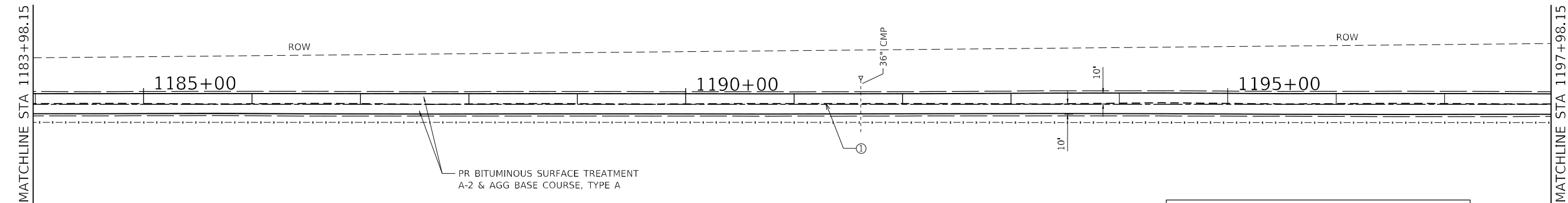
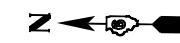
MODEL: Default  
 FILE NAME: p:\project-aw-bee\paw.com\p\w\DOT\Documents\DOT Office\Dir\dir: 6\Project\0672163\CAD\Drawn\CAD\sheet17163.dwg-PR-FR-15.dgn

USER NAME = R0herTM	DESIGNED -	REVISED -
	DRAWN -	REVISED -
PLOT SCALE = 100,0000' / in.	CHECKED -	REVISED -
PLOT DATE = 2/9/2022	DATE -	REVISED -

**STATE OF ILLINOIS  
DEPARTMENT OF TRANSPORTATION**

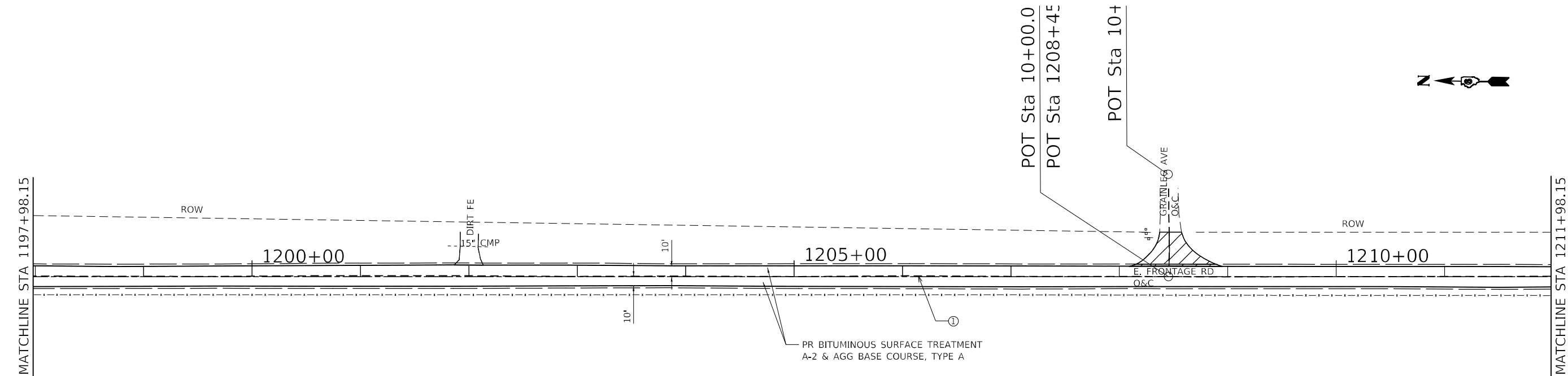
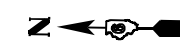
<b>I 55 EAST FRONTAGE ROAD</b>				
SCALE:	SHEET	OF	SHEETS	STA. TO STA.

F.A.I. RTE.	SECTION	COUNTY	TOTAL SHEETS	SHEET NO.
55 5	(68-4) R-RS	MONTGOMERY	20	12
CONTRACT NO. 72L63				
ILLINOIS FED. AID PROJECT				



**LEGEND**

1.) PAINT PAVEMENT MARKING-LINE 5" (SKIPPED DASH 10 FT AT 40 FT CENTERS-YELLOW)



**LEGEND**

1.) PAINT PAVEMENT MARKING-LINE 5" (SKIPPED DASH 10 FT AT 40 FT CENTERS-YELLOW)

BUTT JOINT

MODEL: Default  
 FILE NAME: p:\project\paw\_bentley.com\p\illdot\documents\illdot\_offices\dir\dr\_6\Project\067163\CADD\paw\Caddsheet\72163\paw-efr151.dgn

USER NAME = RohertM	DESIGNED -	REVISED -
	DRAWN -	REVISED -
PLOT SCALE = 100,0000' / in.	CHECKED -	REVISED -
PLOT DATE = 2/9/2022	DATE -	REVISED -

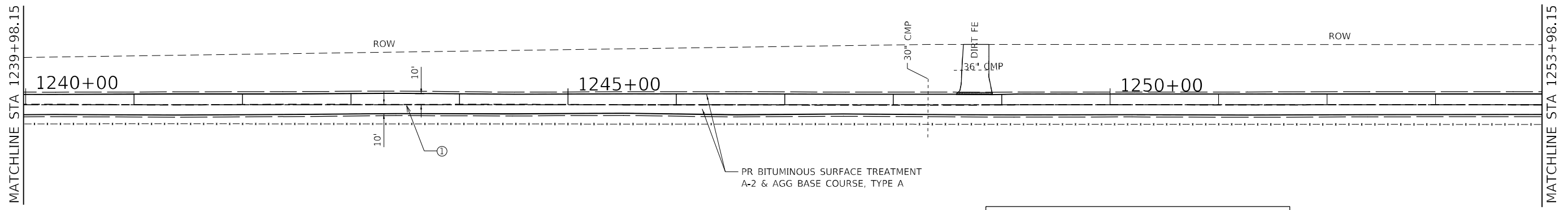
**STATE OF ILLINOIS  
DEPARTMENT OF TRANSPORTATION**

**I 55 EAST FRONTAGE ROAD**

SCALE: SHEET OF SHEETS STA. TO STA.

F.A.I. RTE.	SECTION	COUNTY	TOTAL SHEETS	SHEET NO.
55 5	(68-4) R-RS	MONTGOMERY	20	13
CONTRACT NO. 72L63				
ILLINOIS FED. AID PROJECT				

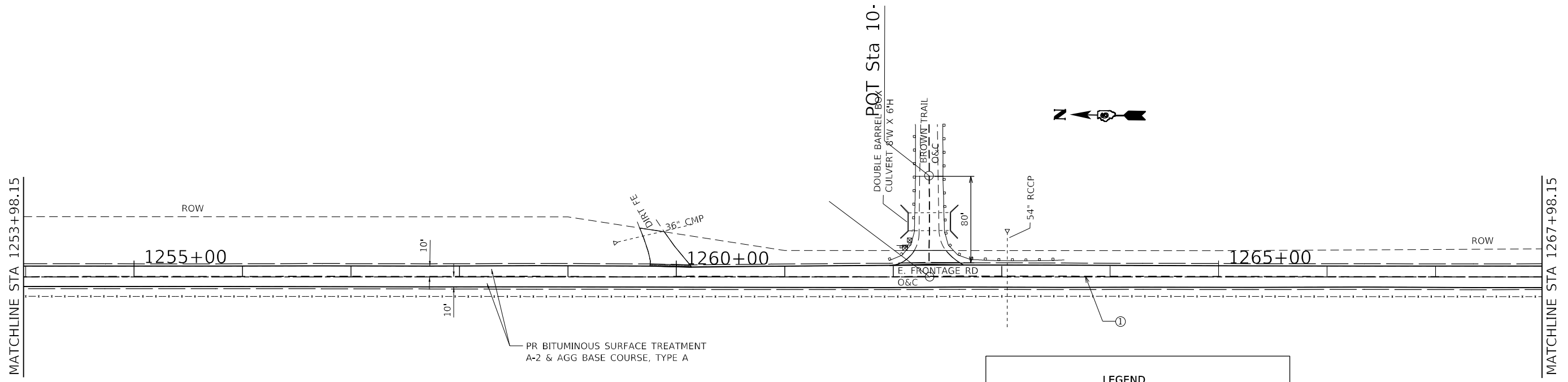




PR BITUMINOUS SURFACE TREATMENT  
A-2 & AGG BASE COURSE, TYPE A

**LEGEND**

1.) PAINT PAVEMENT MARKING-LINE 5" (SKIPPED  
DASH 10 FT AT 40 FT CENTERS-YELLOW)



PR BITUMINOUS SURFACE TREATMENT  
A-2 & AGG BASE COURSE, TYPE A

**LEGEND**

1.) PAINT PAVEMENT MARKING-LINE 5" (SKIPPED  
DASH 10 FT AT 40 FT CENTERS-YELLOW)

MODEL: Default  
 FILE NAME: p:\project\paw\_bentley.com\p\illinois\documents\DOT Office\Drawings\I55\I55E815.dgn

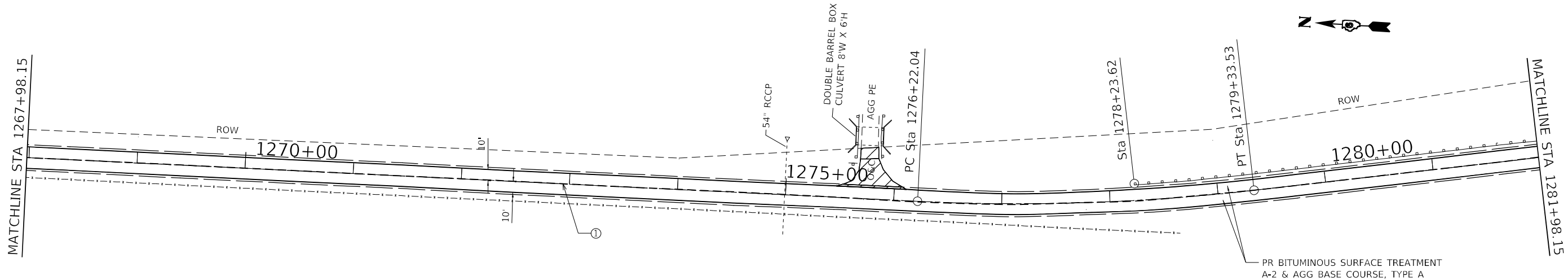
USER NAME = RoberTM	DESIGNED -	REVISED -
	DRAWN -	REVISED -
PLOT SCALE = 100,0000' / in.	CHECKED -	REVISED -
PLOT DATE = 2/9/2022	DATE -	REVISED -

**STATE OF ILLINOIS  
DEPARTMENT OF TRANSPORTATION**

**I 55 EAST FRONTAGE ROAD**


SCALE:      SHEET      OF      SHEETS      STA.      TO      STA.

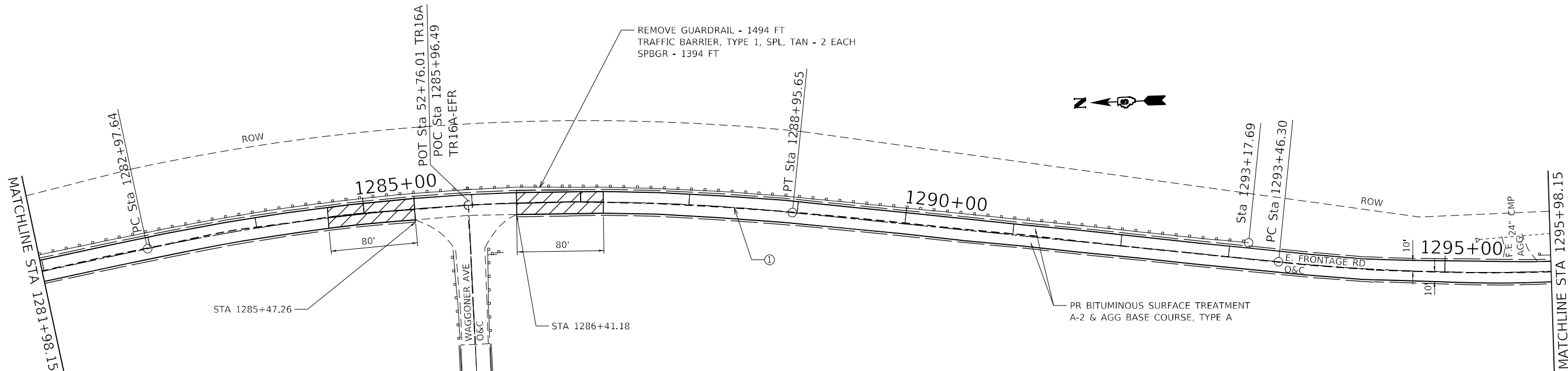
F.A.I. RTE.	SECTION	COUNTY	TOTAL SHEETS	SHEET NO.
55 5	(68-4) R-RS	MONTGOMERY	20	15
CONTRACT NO. 72L63				
ILLINOIS FED. AID PROJECT				



**LEGEND**

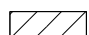
1.) PAINT PAVEMENT MARKING-LINE 5" (SKIPPED DASH 10 FT AT 40 FT CENTERS-YELLOW)

 BUTT JOINT



**LEGEND**

1.) PAINT PAVEMENT MARKING-LINE 5" (SKIPPED DASH 10 FT AT 40 FT CENTERS-YELLOW)

 BUTT JOINT

MODEL: Default  
 FILE NAME: p:\project-aw-bead\paw.com\p\w\dot\Documents\DOT Office\Dir\dir: 6\Project\10672163\CAD\Drawn\CAD\Sheet\72163-SP-FFR-15.dgn

USER NAME = RoberTM	DESIGNED -	REVISED -
	DRAWN -	REVISED -
PLOT SCALE = 100,0000' / in.	CHECKED -	REVISED -
PLOT DATE = 2/9/2022	DATE -	REVISED -

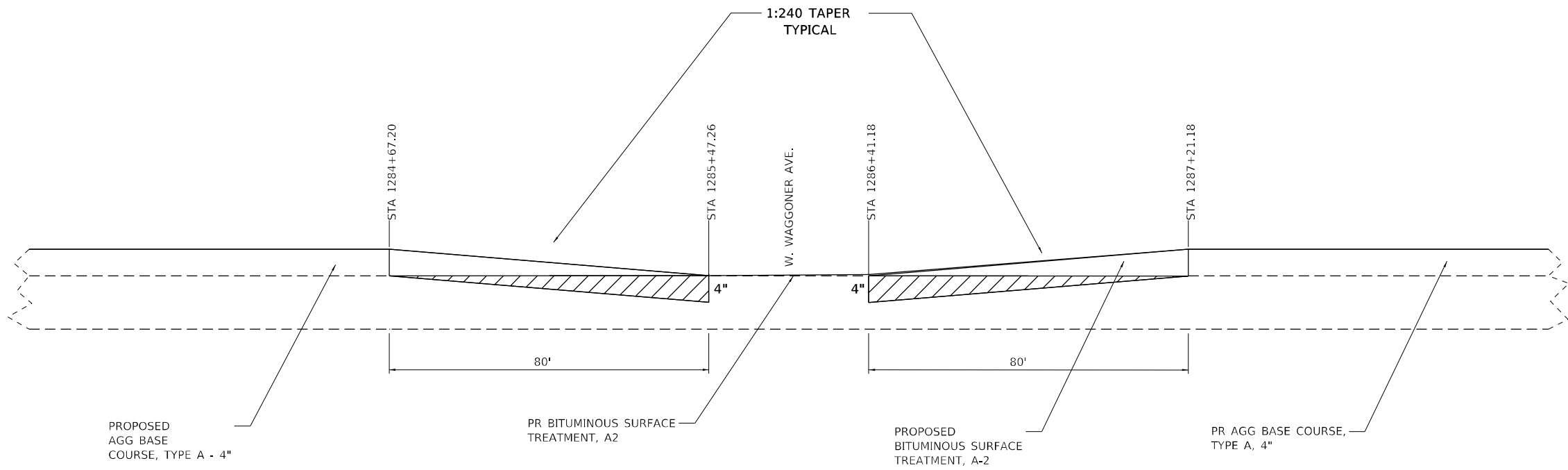
**STATE OF ILLINOIS  
DEPARTMENT OF TRANSPORTATION**

<b>I 55 EAST FRONTAGE ROAD</b>				
SCALE:	SHEET	OF	SHEETS	STA. TO STA.

F.A.I. RTE.	SECTION	COUNTY	TOTAL SHEETS	SHEET NO.
55 5	(68-4) R-RS	MONTGOMERY	20	16
			CONTRACT NO. 72L63	
ILLINOIS FED. AID PROJECT				







TAPER DETAIL

 HMA SURFACE REMOVAL -- BUTT JOINT

MODEL: Default  
 FILE: hma155\_east\_frontage\_road\_waggoner\_ave.txd  
 PROJECT: I:\Projects\DOT\Projects\DOT\Office\Dir\Dir\63\CAD\Drawings\CAD\Drawings\63\63-ent-detail.dwg

USER NAME = RoberTM	DESIGNED -	REVISED -
	DRAWN -	REVISED -
PLOT SCALE = 100,0000' / in.	CHECKED -	REVISED -
PLOT DATE = 2/9/2022	DATE -	REVISED -

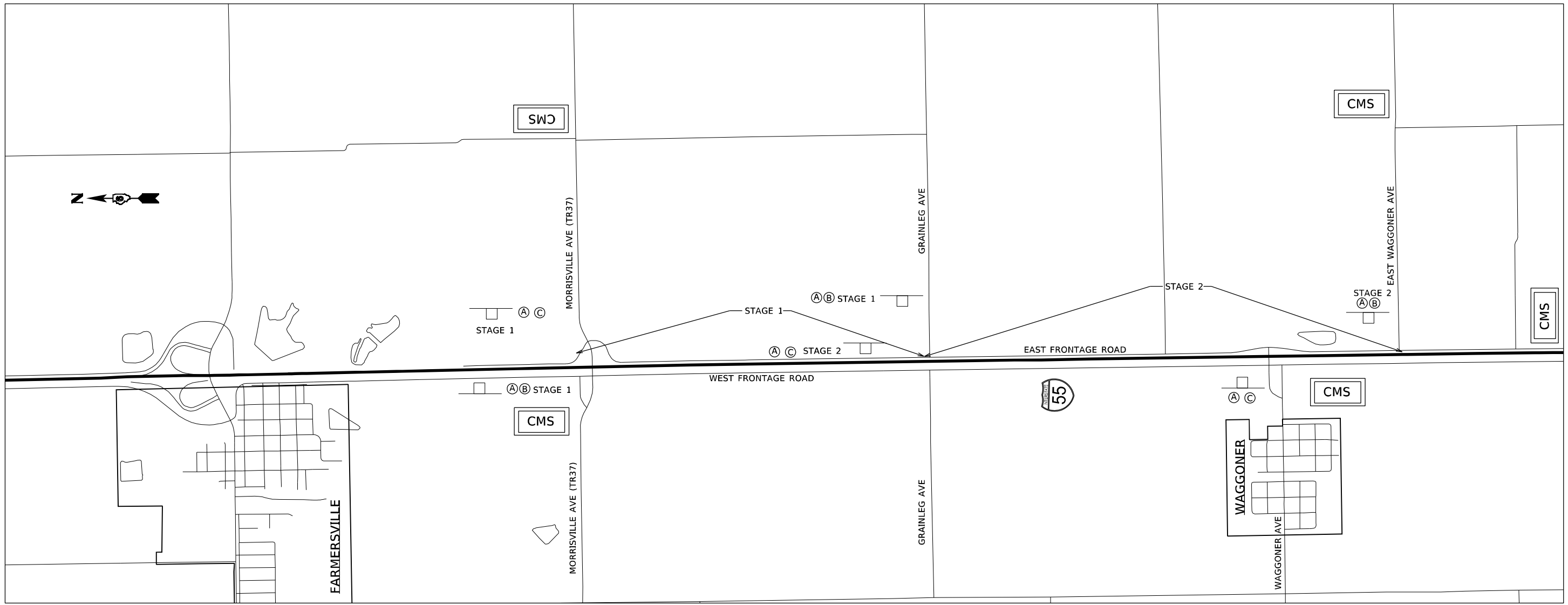
**STATE OF ILLINOIS  
DEPARTMENT OF TRANSPORTATION**

**I 55 EAST FRONTAGE ROAD  
WEST WAGGONER AVE. TAPER DETAIL**

SCALE: SHEET OF SHEETS STA. TO STA.

F.A.I. RTE.	SECTION	COUNTY	TOTAL SHEETS	SHEET NO.
55 5	(68-4) R-RS	MONTGOMERY	20	18
CONTRACT NO. 72L63				
ILLINOIS FED. AID PROJECT				





**NOTES**

FIVE CHANGABLE MESSAGE SIGNS ARE REQUIRED TO BE PLACED ONE WEEK PRIOR TO TEMPORARILY CLOSING OF TRAFFIC, ONE WEEK PRIOR TO ROAD CLOSURE AND CONTINUING THROUGH THE DURATION OF CLOSURES.

STAGE 1 WILL START AT STATION 1132+10.37 AND STOP AT STATION 1208+08.91.

STAGE 2 WILL START AT STATION 1208+08.91 AND STOP AT STATION 1315+42.59.

**LEGEND**

 SIGN

 CHANGABLE MESSAGE SIGN

**CONTRACTOR FURNISHED SIGNS**

**A** 

**B** 

**C** 

NOT TO SCALE

MODEL: Default  
FILE: M:\MIS\_Plan\Subsect-cw-beadley.com\P\W\DOT\Documents\1\DOT\_Offices\Dir\rdt\_6\Project\10672163\CAD\Drawings\CADsheets\10672163-sub-ct-stage1.dgn

USER NAME = RoberTM	DESIGNED -	REVISED -
	DRAWN -	REVISED -
PLOT SCALE = 100,0000' / in.	CHECKED -	REVISED -
PLOT DATE = 2/9/2022	DATE -	REVISED -

**STATE OF ILLINOIS  
DEPARTMENT OF TRANSPORTATION**

**TRAFFIC CONTROL DETAIL**

SCALE: SHEET OF SHEETS STA. TO STA.

F.A.I. RTE.	SECTION	COUNTY	TOTAL SHEETS	SHEET NO.
55 5	(68-4) R-RS	MONTGOMERY	20	20
CONTRACT NO. 72L63				
ILLINOIS FED. AID PROJECT				