

STATE OF ILLINOIS
DEPARTMENT OF TRANSPORTATION

F.A.P. RTE	SECTION	COUNTY	TOTAL SHEETS	SHEET NO
774	D7 PATCHING 2022-1	EFFINGHAM	6	1
FAP 774, FAP 328A	ILLINOIS	CONTRACT NO. 74A76		

FOR INDEX OF SHEETS, SEE SHEET NO. 2

PROPOSED HIGHWAY PLANS

VARIOUS ROUTES
SECTION D7 PATCHING 2022-1

PAVEMENT PATCHING
EFFINGHAM COUNTY

D-97-107-21



ADT = 23,500

C-97-176-21

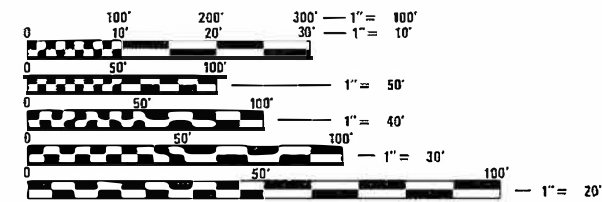
PROJECT ENDS
STA 1188 + 34

STATION EQUATION
STA. 160 + 06.47 BK = STA. 1160 + 06.47 AH

PROJECT BEGINS
STA 128 + 00

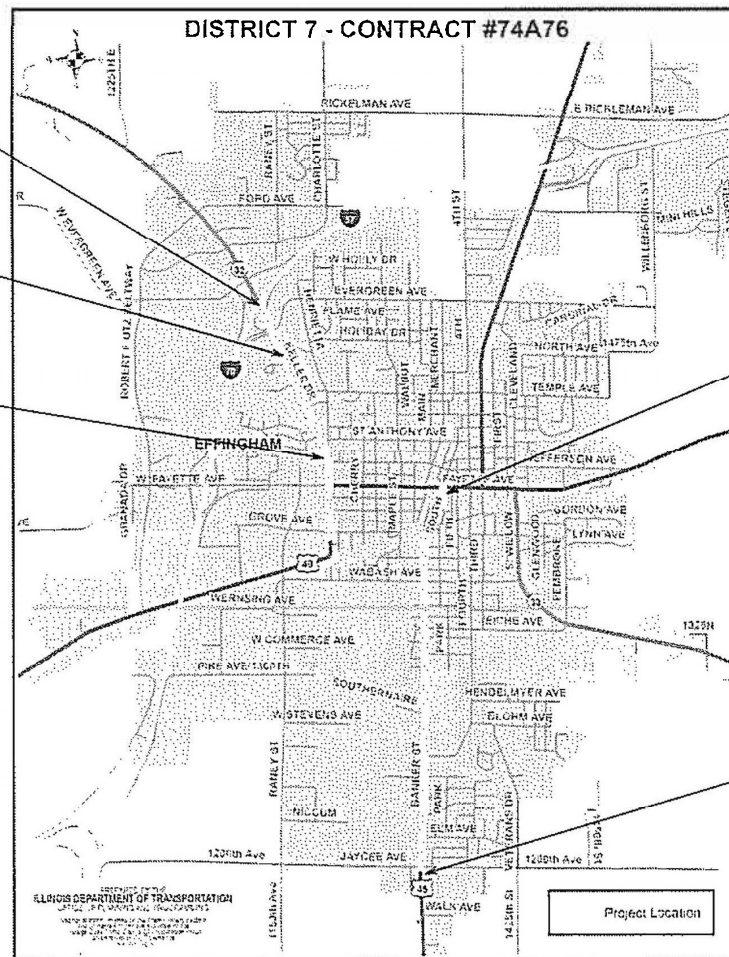
PROJECT ENDS
STA 112 + 00

PROJECT BEGINS
STA 84 + 00



FULL SIZE PLANS HAVE BEEN PREPARED USING STANDARD ENGINEERING SCALES. REDUCED SIZED PLANS WILL NOT CONFORM TO STANDARD SCALES. IN MAKING MEASUREMENTS ON REDUCED PLANS, THE ABOVE SCALES MAY BE USED.

J.U.L.I.E.
JOINT UTILITY LOCATION INFORMATION FOR EXCAVATORS
1-800-892-0123
OR 811



GROSS LENGTH = 16,834.80 FT. = 3.19 MILE
NET LENGTH = 16,834.80 FT. = 3.19 MILE

PROJECT ENGINEER BRIAN LEWIS
PROJECT MANAGER ANDREW NIEMERG

CONTRACT NO. 74A76

STATE OF ILLINOIS
DEPARTMENT OF TRANSPORTATION

SUBMITTED FEBRUARY 8 2022

Jeffrey P. Mynick
REGIONAL ENGINEER

March 25 2022
[Signature]
ENGINEER OF DESIGN AND ENVIRONMENT

March 23 2022
Stephen M. Lewis
DIRECTOR OF HIGHWAYS PROJECT IMPLEMENTATION

PRINTED BY THE AUTHORITY
OF THE STATE OF ILLINOIS

INDEX OF SHEETS

SHEET NO.	ITEM
1	COVER SHEET
2	GENERAL NOTES, INDEX OF SHEETS & LIST OF STANDARDS
3	SUMMARY OF QUANTITIES
4-6	PATCHING SCHEDULES

THE FOLLOWING STANDARDS ARE A PART OF THESE PLANS AND ARE INCLUDED AFTER SHEET NO. 6:

STD. NO.	DESCRIPTION
001001-02	AREAS OF REINFORCEMENT BARS
001006	DECIMAL OF AN INCH AND OF A FOOT
420001-10	PAVEMENT JOINTS
420701-03	PAVEMENT WELDED WIRE REINFORCEMENT
442101-09	CLASS B PATCHES
701602-10	URBAN LANE CLOSURE, MULTILANE, 2W WITH BI-DIRECTIONAL LEFT TURN LANE
701701-10	URBAN LANE CLOSURE, MULTILANE INTERSECTION
701901-08	TRAFFIC CONTROL DEVICES
886006-01	TYPICAL LAYOUTS FOR DETECTION LOOPS
886001-01	DETECTOR LOOP INSTALLATIONS
000001-08	STANDARD SYMBOLS, ABBREVIATIONS AND PATTERNS

GENERAL NOTES

THIS PROJECT IS LOCATED ON ILL 32/33 0.2 MILES NORTH OF I-57/70 INTERCHANGE TO JEFFERSON AVE IN THE CITY OF EFFINGHAM IN EFFINGHAM COUNTY. PROJECT IS ALSO LOCATED ON US 45 FROM FAYETTE AVENUE TO JAYCEE AVENUE IN TH CITY OF EFFINGHAM. THE WORK INCLUDED IN SECTION D7 PATCHING 2022-1 CONSISTS OF CLASS B PAVEMENT PATCHING, TRAFFIC CONTROL, AND ANY OTHER WORK NECESSARY TO COMPLETE THE SECTION.

THE ACTUAL LOCATIONS OF PAVEMENT PATCHING AND FINAL QUANTITIES WILL BE DETERMINED BY THE ENGINEER IN THE FIELD.

DETECTOR LOOPS DAMAGED DUE TO PATCHING WILL BE REPLACED IN KIND AND PAID FOR AS DETECTOR LOOP REPLACEMENT.

REV. - MS

MODEL: Default
 FILE NAME: P:\Public\sw_bentley.com\pwworkspace\Documents\DOT_Offices\District_7\Projects\74A\74A76\CADD\Drawings\CAD\Sheets\DOT74A76-01-GENOTE.dgn

USER NAME = steffenmk	DESIGNED -	REVISED -	STATE OF ILLINOIS DEPARTMENT OF TRANSPORTATION	INDEX OF SHEETS AND GENERAL NOTES		F.A. RTE:	SECTION	COUNTY	TOTAL SHEETS	SHEET NO.
PLOT SCALE = 2.0000' / in.	DRAWN -	REVISED -				*	D7 PATCHING 2022-1	EFFINGHAM	6	2
PLOT DATE = 2/8/2022	CHECKED -	REVISED -		SCALE: SHEET 1 OF 1 SHEETS STA. TO STA.		* FAP 774, FAP 328A		CONTRACT NO. 74A76		
	DATE -	REVISED -				ILLINOIS FED. AID PROJECT				

