

STATE OF ILLINOIS
DEPARTMENT OF TRANSPORTATION

F A P RTE.	SECTION	COUNTY	TOTAL SHEETS	SHEET NO.
116	D7 AGG SHLD 2022-2	CUMB./JASP	3	1
		ILLINOIS	CONTRACT NO. 74A83	

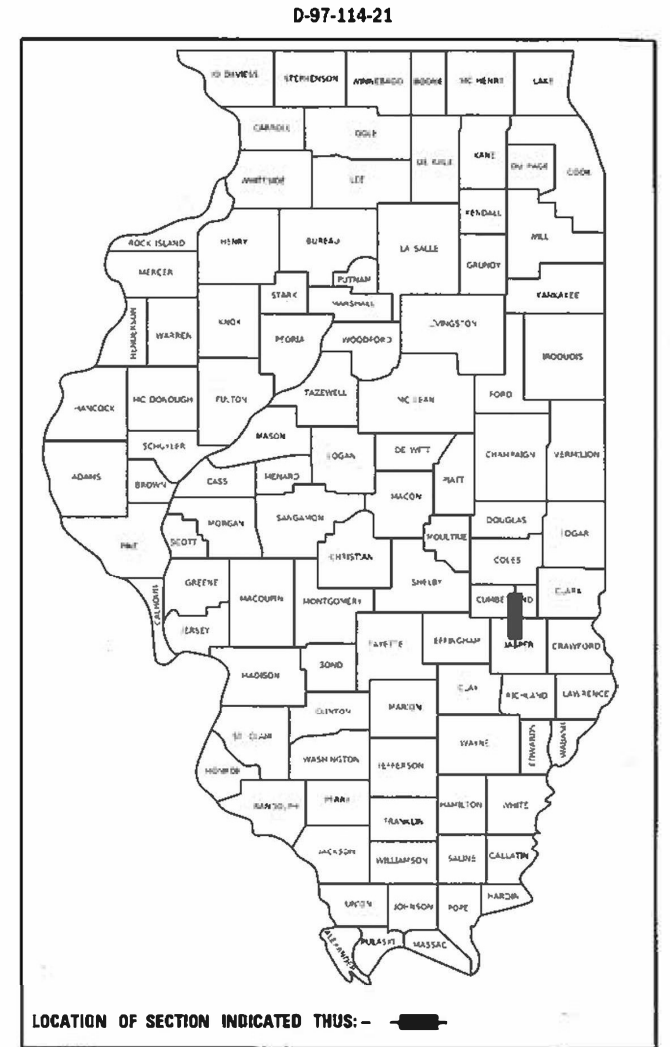
FOR INDEX OF SHEETS, SEE SHEET NO. 2
ADT NORTH OF GREENUP=1350 (2021)
ADT NORTH OF NEWTON=1700 (2021)

PROPOSED
HIGHWAY PLANS

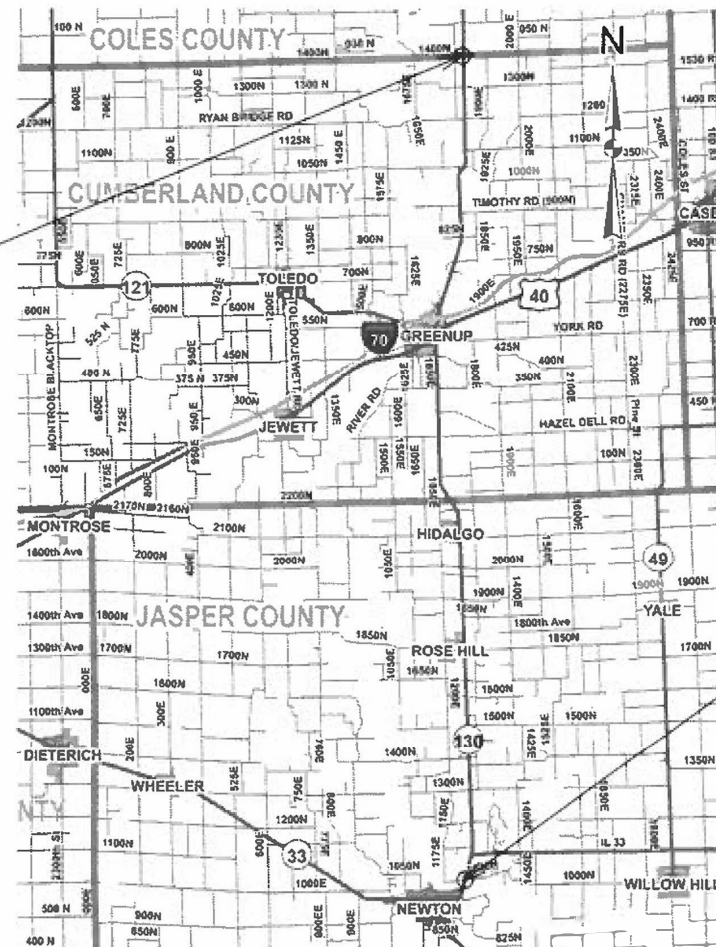
FAP ROUTE 116 (IL 130)
SECTION D7 AGG SHLD 2022-2

SHOULDER RECONSTRUCTOIN
CUMBERLAND & JASPER COUNTY

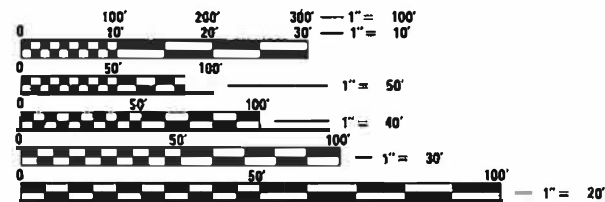
C-97-183-21



PROJECT BEGINS
0+00



PROJECT ENDS
STR. 040-0019



FULL SIZE PLANS HAVE BEEN PREPARED USING STANDARD ENGINEERING SCALES. REDUCED SIZED PLANS WILL NOT CONFORM TO STANDARD SCALES. IN MAKING MEASUREMENTS ON REDUCED PLANS THE ABOVE SCALES MAY BE USED.

J.U.L.I.E.
JOINT UTILITY LOCATION INFORMATION FOR EXCAVATORS
1-800-892-0123
OR 811

PROJECT ENGINEER Mark Daugherty
PROJECT MANAGER Ryan Kohnert

GROSS LENGTH = 106,867 FT. = 20.24 MILE
NET LENGTH = 106,867 FT. = 20.24 MILE

CONTRACT NO. 74A83

STATE OF ILLINOIS
DEPARTMENT OF TRANSPORTATION

SUBMITTED January 20, 2022

Jeffrey P. Mynick
REGIONAL ENGINEER

March 25, 2022

Stephen M. Faria
ENGINEER OF DESIGN AND ENVIRONMENT

March 28, 2022

Stephen M. Faria
DIRECTOR OF HIGHWAYS PROJECT IMPLEMENTATION

PRINTED BY THE AUTHORITY
OF THE STATE OF ILLINOIS

GENERAL NOTES

THIS PROJECT IS LOCATED ON IL ROUTE 130 IN CUMBERLAND AND JASPER COUNTIES. THE PROJECT STARTS AT THE COLES COUNTY LINE AND EXTENDS SOUTH FOR APPROXIMATELY 8.33 MILES TO 0.3 MILES NORTH OF THE I-70 INTERCHANGE NORTH OF GREENUP AND PICKS BACK UP AT THE CUMBERLAND COUNTY LINE AND EXTENDS SOUTH TO STRUCTURE 040-0019 JUST SOUTH OF 1030 NORTH, NORTH OF NEWTON.

THE WORK INCLUDED IN SECTION D7 AGG SHLD 2022-2 CONSISTS OF PLACING AGGREGATE SHOULDERS, TRAFFIC CONTROL, AND ANY OTHER WORK NECESSARY TO COMPLETE THE SECTION.

ALL MATERIAL USED FOR AGGREGATE SHOULDERS, TYPE B SHALL BE CRUSHED STONE WITH A MINIMUM IFR OF 80.

AGGREGATE FOR MAILBOX TURNOUTS AND PRIVATE ENTRANCES SHALL BE PLACED AS DIRECTED BY THE ENGINEER AND WILL BE PAID FOR AS AGGREGATE SHOULDERS, TYPE B.

A RATE OF APPLICATION OF 1.80 TONS/CU YD FOR HAS BEEN USED IN CALCULATING PLAN QUANTITY.

OMISSIONS

GENERAL OMISSIONS WILL BE PAVED SECTIONS OF SHOULDER INCLUDING GUTTERS, SIDE ROADS AND INTERSECTIONS, PRIVATE ENTRANCES, FIELD INTRANCES, COMMERCIAL ENTRANCES, AND MAILBOX TURNOUTS.

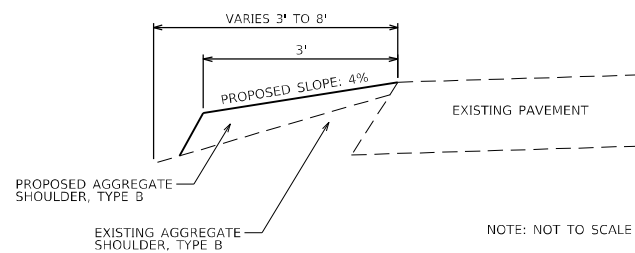
INDEX OF SHEETS

SHEET NO.	ITEM
1	COVER SHEET
2	INDEX OF SHEETS, GENERAL NOTES AND SHOULDER DETAIL
3	SUMMARY OF QUANTITIES

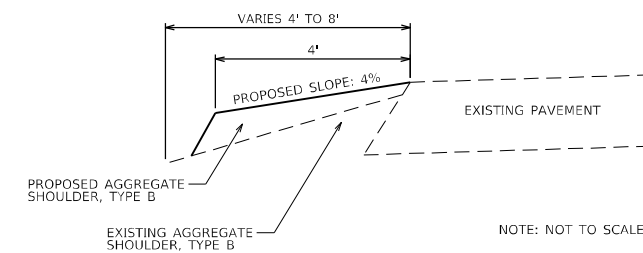
THE FOLLOWING STANDARDS ARE A PART OF THESE PLANS AND ARE INCLUDED AFTER SHEET NO. 4:

STD. NO.	DESCRIPTION
000001-08	STANDARD SYMBOLS, ABBREVIATIONS AND PATTERNS
001006	DECIMAL OF AN INCH AND OF A FOOT
406201-01	MAILBOX TURNOUT
701001-02	OFF-ROAD OPERATIONS, 2L, 2W, MORE THAN 15' AWAY
701006-05	OFF-RD OPERATIONS, 2L, 2W, 15' TO 24' FROM PAVEMENT EDGE
701011-04	OFF-RD MOVING OPERATIONS, 2L, 2W, DAY ONLY
701301-04	LANE CLOSURE, 2L, 2W, SHORT TIME OPERATIONS
701306-04	LANE CLOSURE, 2L, 2W, SLOW MOVING OPERATIONS, DAY ONLY, FOR SPEEDS \geq 45 MPH
701311-03	LANE CLOSURE, 2L, 2W, MOVING OPERATIONS - DAY ONLY
701901-08	TRAFFIC CONTROL DEVICES

SHOULDER DETAIL JASPER COUNTY



SHOULDER DETAIL CUMBERLAND COUNTY



REV. - MS

MODEL: Default
 FILE NAME: p:\ultra-cw-beaufay.com\FW\DOT\Documents\DOT Office\Drawings\Project\74A83\CADD\Drawings\74A83-shld-genote.dgn

USER NAME = stefenmk	DESIGNED -	REVISED -
	DRAWN -	REVISED -
PLOT SCALE = 100,0000 ' / in.	CHECKED -	REVISED -
PLOT DATE = 2/8/2022	DATE -	REVISED -

STATE OF ILLINOIS
DEPARTMENT OF TRANSPORTATION

INDEX OF SHEETS, GENERAL NOTES
AND SHOULDER DETAILS

SCALE: SHEET OF SHEETS STA. TO STA.

F.A.P. RTE.	SECTION	COUNTY	TOTAL SHEETS	SHEET NO.
116	D7 AGG SHLD 2022-2	CUMB./JASP.	3	2
		74A83		
		ILLINOIS	FED. AID PROJECT	

