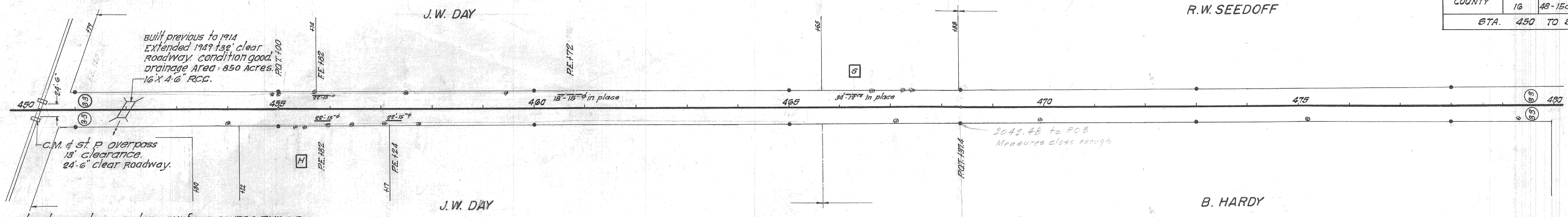
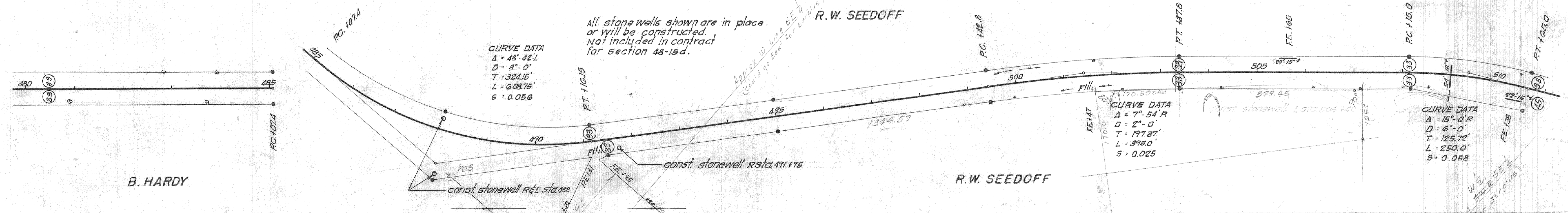
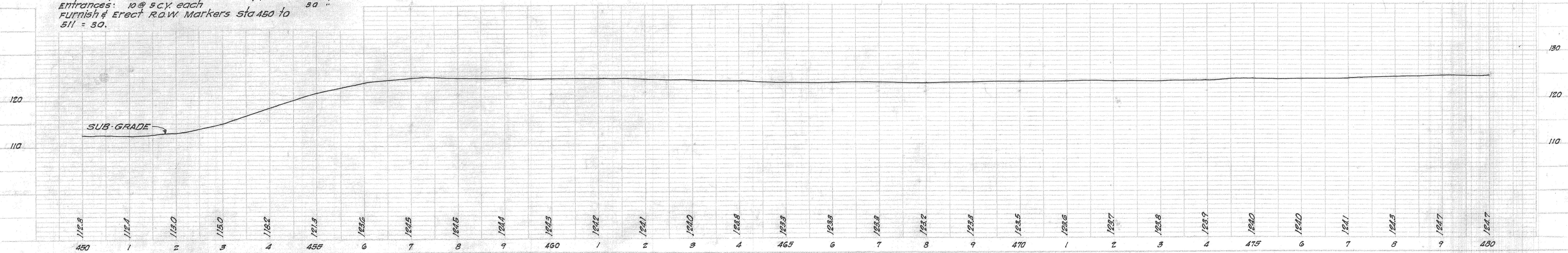


WINNEBAGO COUNTY	ROUTE NO. 16	SECT. NO. 48-15d	TOTAL SHEETS 19	SHEET NO. 4
STA. 450 TO STA. 511				



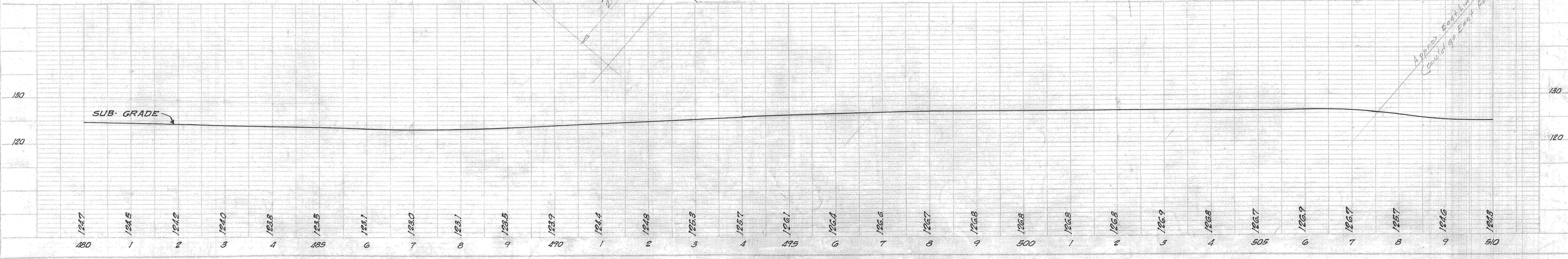
construct gravel or cr. stone surface course-type B  
 Road Way: sta 450+0 - 511+0 @ 55 C.Y./sta. = 3355 C.Y.  
 Entrances: 10 @ 5CY each  
 Furnish & Erect R.W. Markers sta 450 to 511 = 30.



CURVE DATA  
 $\Delta = 48^\circ 42' L$   
 $D = 8^\circ 0'$   
 $T = 324.15'$   
 $L = 608.75'$   
 $S = 0.056$

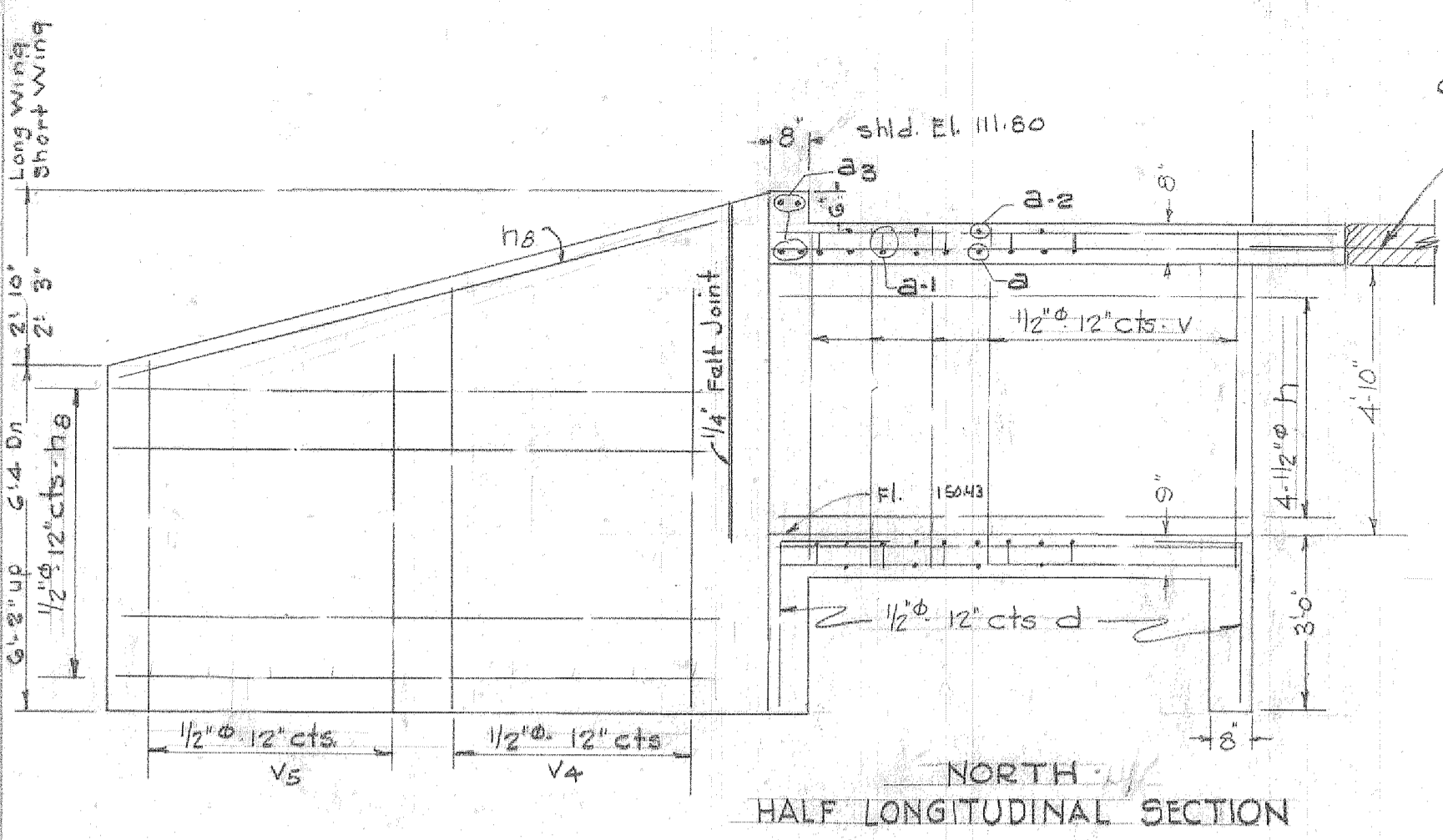
CURVE DATA  
 $\Delta = 7^\circ 54' R$   
 $D = 2^\circ 0'$   
 $T = 177.87'$   
 $L = 375.0'$   
 $S = 0.025$

All stone wells shown are in place or will be constructed. Not included in contract for section 48-15d.

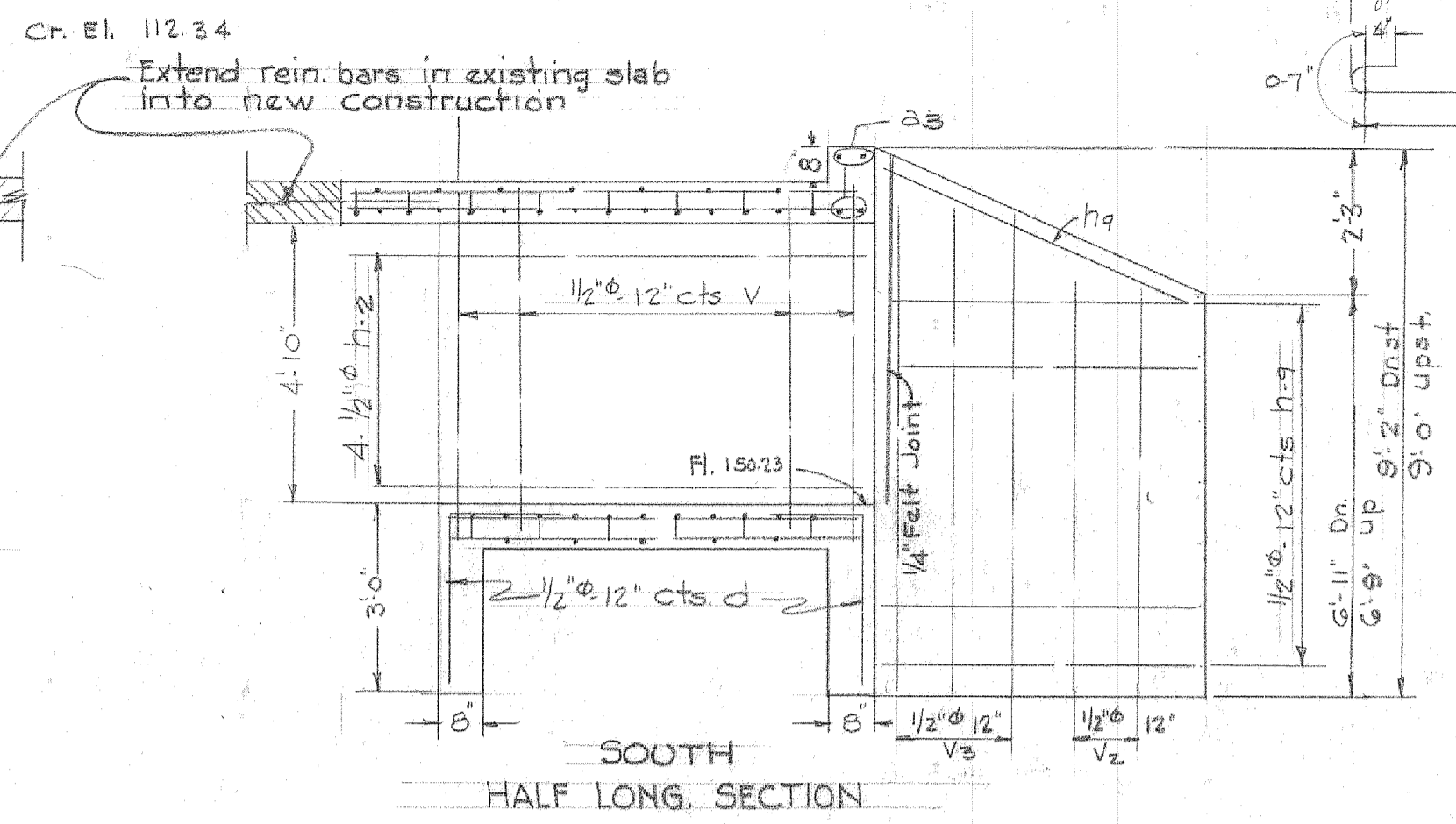


DATE	BY	REVISION

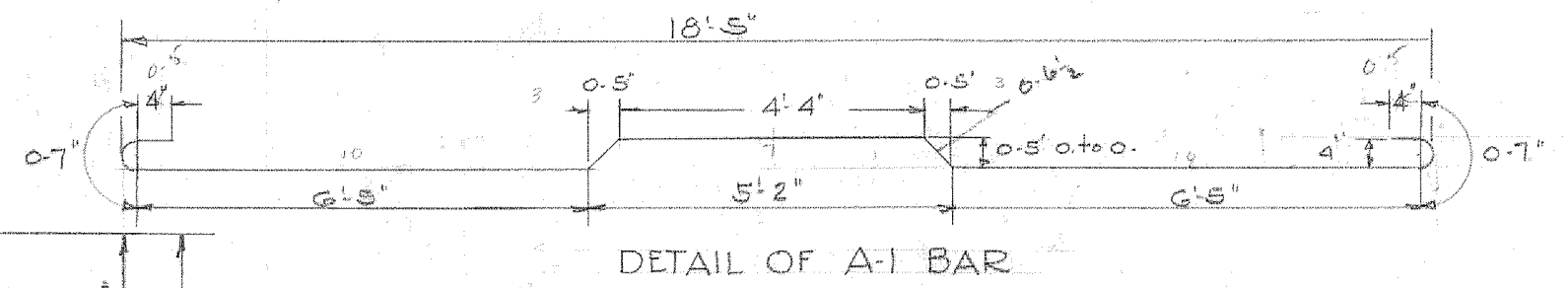
DATE	BY	REVISION



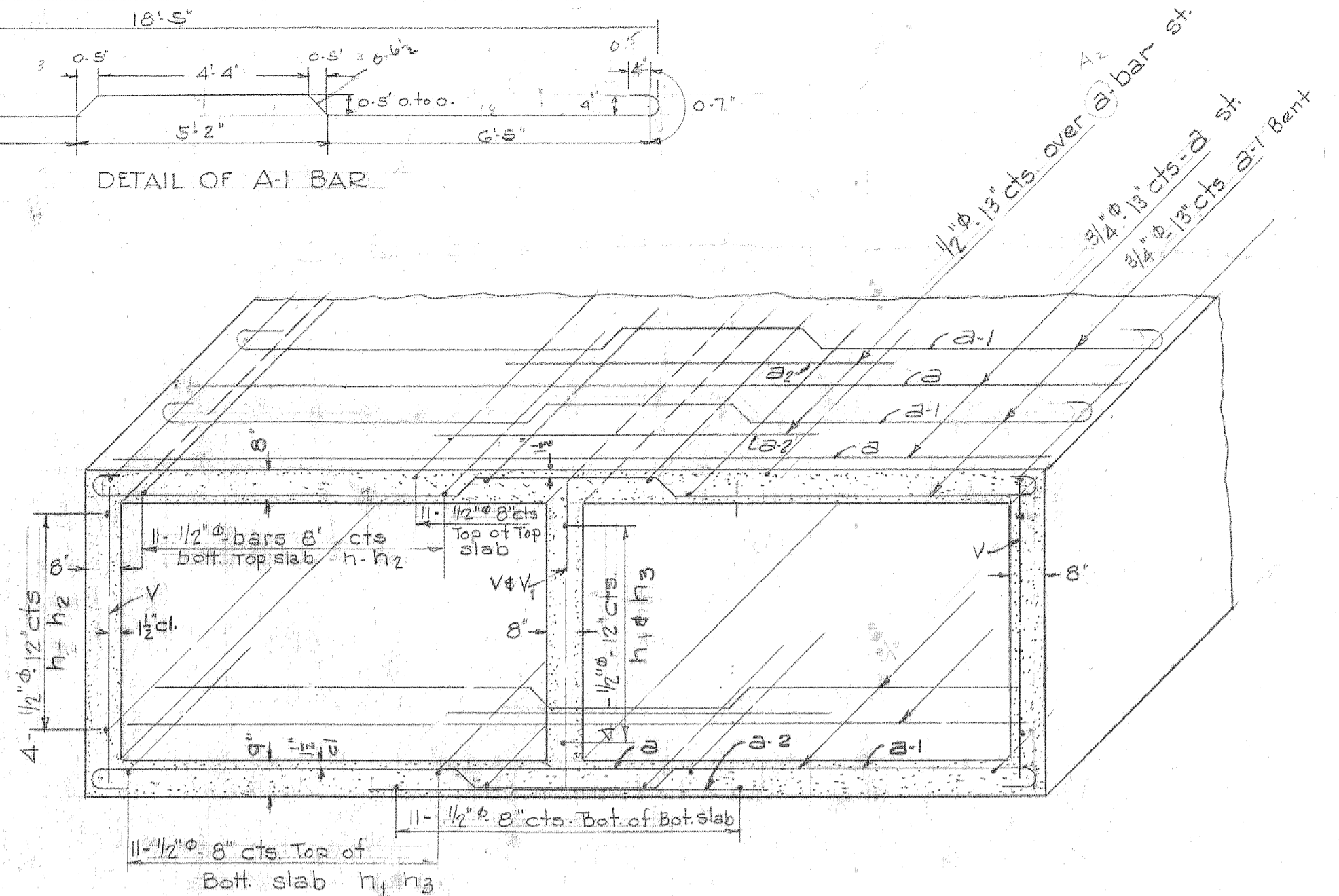
NORTH HALF LONGITUDINAL SECTION



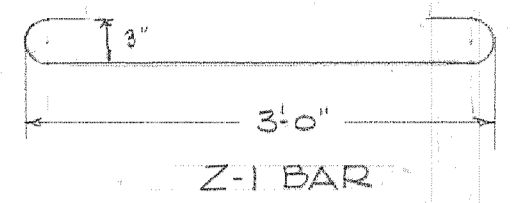
SOUTH HALF LONG. SECTION



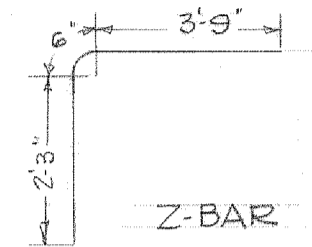
DETAIL OF A-1 BAR



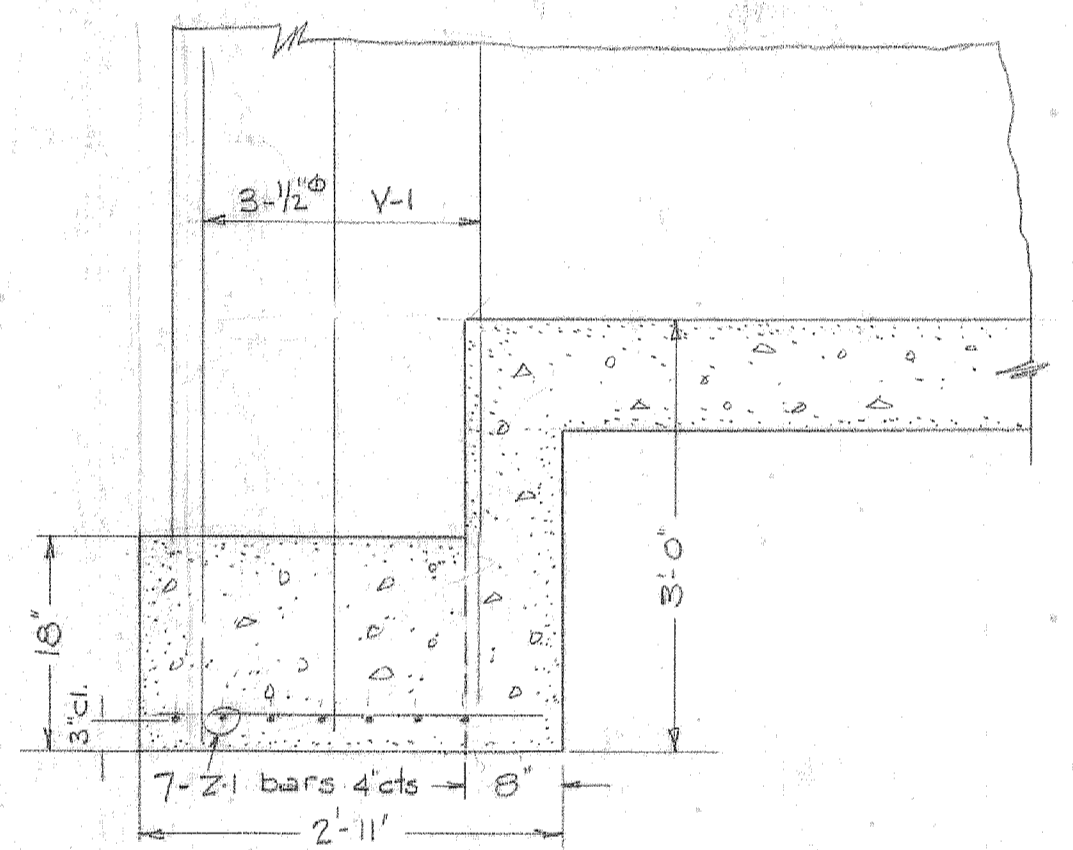
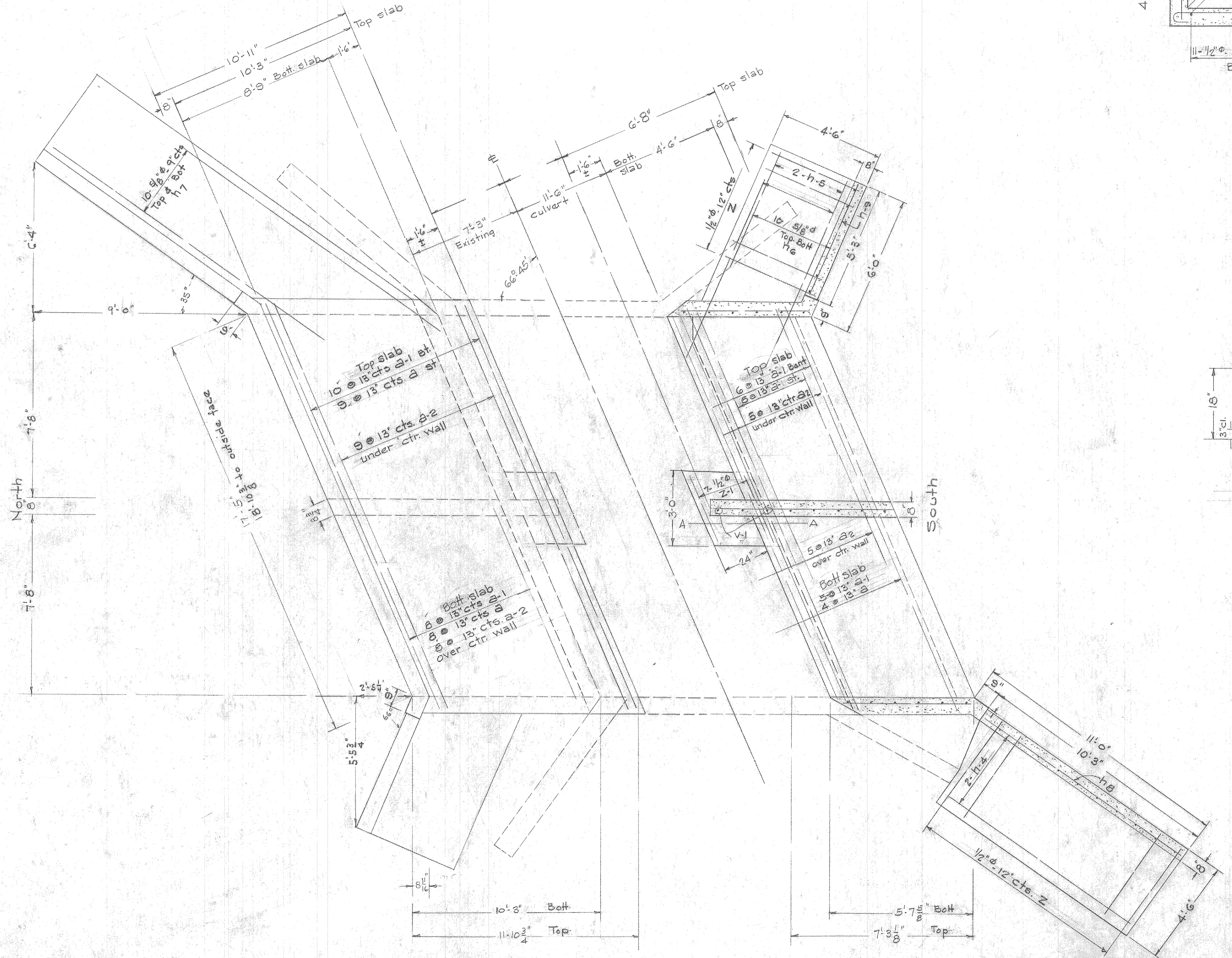
SECTION



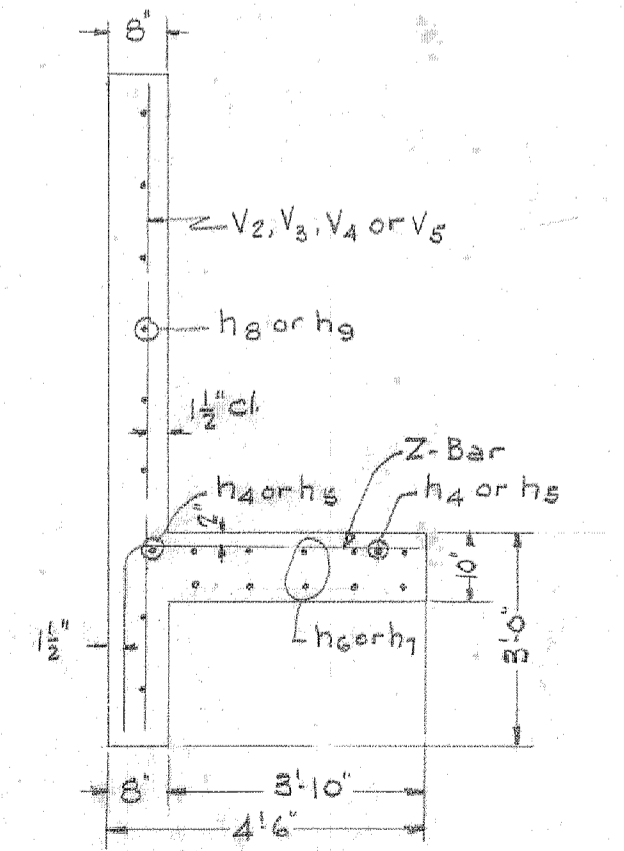
Z-1 BAR



Z-BAR



SECT. THRU FOOTING A-A



SECT. THRU WINGWALL

BILL OF MATERIAL

BAR	NO.	SIZE	LENGTH
A-1	29	3/4"	20'-3"
A-2	26	"	18'-3"
A-3	26	1/2"	9'-0"
A-4	6	3/4"	17'-0"
A-5	41	1/2"	9'-9"
h-1	37	"	11'-3"
h-2	41	"	5'-3"
h-3	37	"	6'-9"
h-4	4	"	9'-3"
h-5	4	"	5'-6"
h-6	20	3/8"	8'-6"
h-7	10	"	14'-0"
h-8	14	1/2"	16'-3"
h-9	14	"	5'-6"
V-1	51	"	6'-0"
V-2	4	"	8'-0"
V-3	4	"	6'-6"
V-4	6	"	7'-6"
V-5	10	"	5'-9"
d	64	"	4'-6"
Z	34	"	6'-6"
Z-1	14	"	4'-0"

Cl. X Conc. 876 cu  
Rein. Bars 4100 #

STA. 452+00  
S.A. ROUTE 16 SEC. 48-15'D  
WINNEBAGO COUNTY  
5017