

**INDEX OF SHEETS**

04-29-2022 LETTING ITEM 149

- SHEET 1. COVER SHEET
- SHEET 2. TYPICAL CROSS SECTION, SUMMARY OF QUANTITIES, STRUCTURAL DESIGN, BITUMINOUS MIXTURE TABLE
- SHEET 3. TYPICAL ENTRANCE DETAIL, MAILBOX DETAILS, SIDE ROAD RETURN, GENERAL NOTES

**STANDARDS**

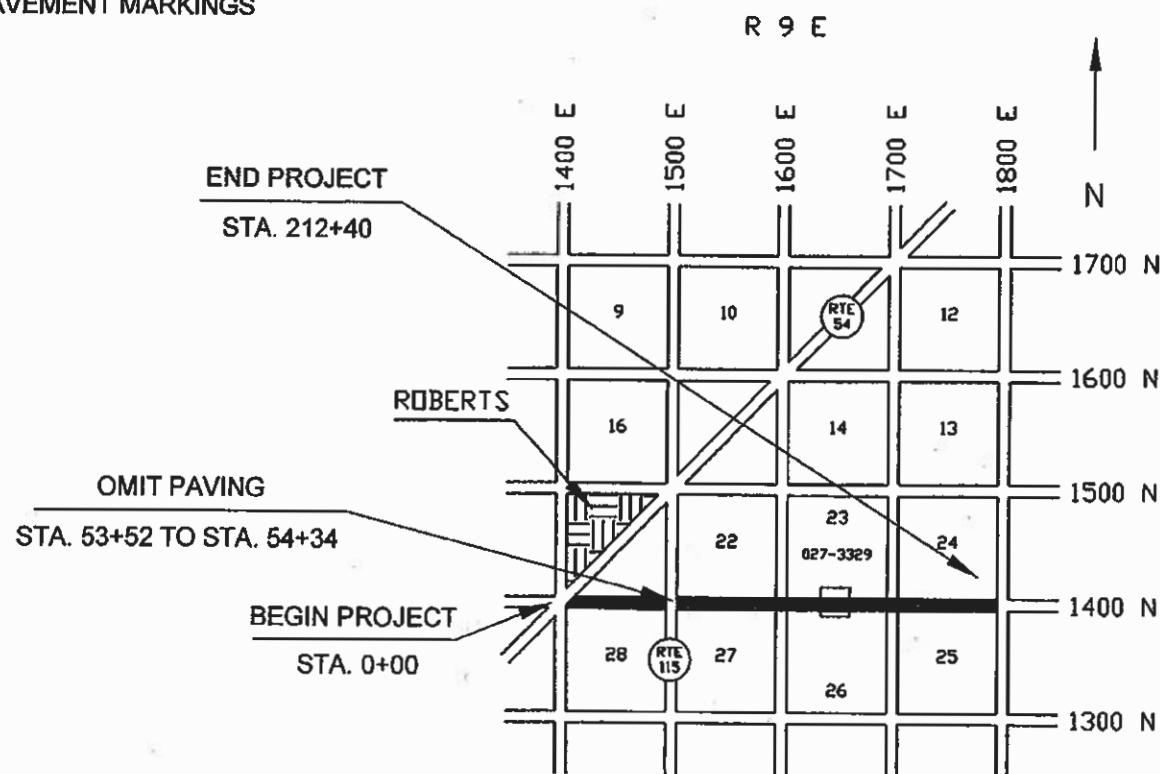
- 000001-08 STANDARD SYMBOLS, ABBREVIATIONS AND PATTERNS
- 701301-04 LANE CLOSURE 2 LANE, 2 WAY, SHORT TIME OPERATIONS
- 701306-04 LANE CLOSURE 2 LANE, 2 WAY, SLOW MOVING OPERATIONS - DAY ONLY FOR SPEEDS > 45 MPH
- 701311-03 LANE CLOSURE 2 LANE, 2 WAY, MOVING OPERATIONS - DAY ONLY
- 701901-08 TRAFFIC CONTROL DEVICES
- 780001-05 TYPICAL PAVEMENT MARKINGS

**STATE OF ILLINOIS  
DEPARTMENT OF TRANSPORTATION  
DIVISION OF HIGHWAYS  
PLANS FOR PROPOSED RESURFACING  
SURFACE TRANSPORTATION RURAL PROGRAM**

C.H. 22 (BUCKLEY ROAD)  
F.A.S. ROUTE 334 SECTION 18-00125-00-RS FORD COUNTY  
PROJECT IQED(180)  
JOB NO. C-93-006-22

FAS NO.	SECTION	COUNTY	TOTAL SHEETS	SHEET NO.
334	18-00125-00-RS	FORD	3	1

PROJECT IQED(180)  
CONTRACT # 87771



**UTILITIES**

UTILITIES ON THIS SECTION AT VARIOUS LOCATIONS INCLUDES TO THE BEST OF OUR KNOWLEDGE:

FRONTIER TELEPHONE COMPANY (UNDERGROUND)  
OVERHEAD POWER - EASTERN ILLINI

CONTRACTORS OR SUBCONTRACTORS SHALL CONTACT J.U.L.I.E. (1-800-892-0123) AT LEAST 72 HOURS PRIOR TO ANY EXCAVATION FOR UTILITIES LOCATION

CONTRACT NO. 87771

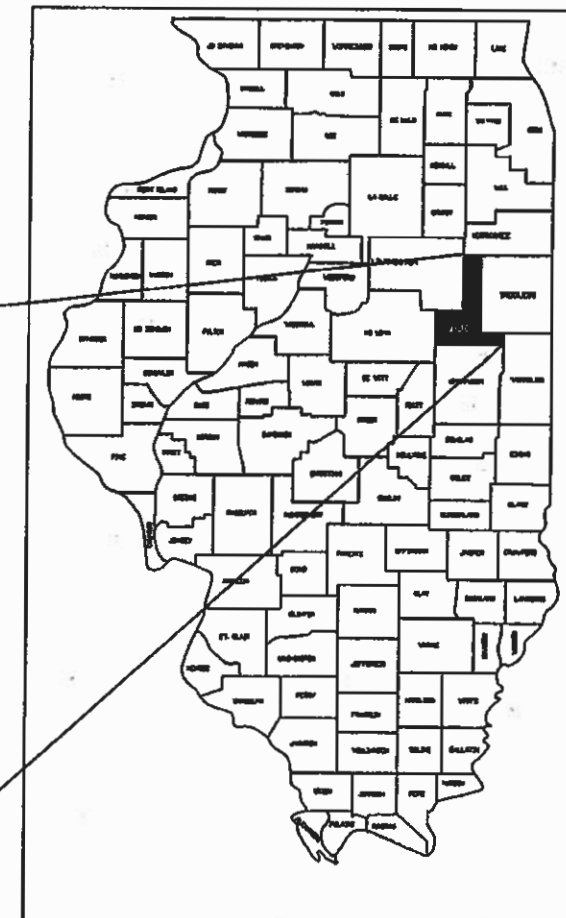
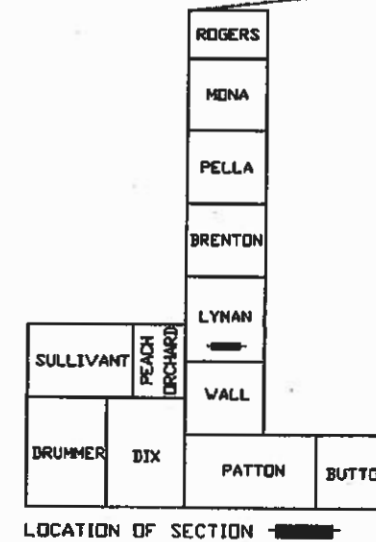
NOT TO SCALE

GROSS LENGTH = 21,240' = 4.023 MI.  
NET LENGTH = 21,158' = 4.007 MI.  
PREVIOUS CONSTRUCTION BY SECTION NUMBERS  
130Q-1, 97-00087-00-RS & 18-00125-00-RS

FUNCTIONAL CLASSIFICATION: MAJOR COLLECTOR

*Gregory L. Perkinson*  
ILLINOIS PROFESSIONAL NO. 062-035801

EXPIRES 11-30-2023



CURRENT (2021) ADT = 400 - 88% PC  
7% SU  
5% MU  
DESIGN ADT (2031) = 450  
DESIGN SPEED = 50 MPH

THE ACCEPTANCE OF THIS PROJECT IS BASED ON THE MINIMUM DESIGN CRITERIA UNDER 3R GUIDELINES.

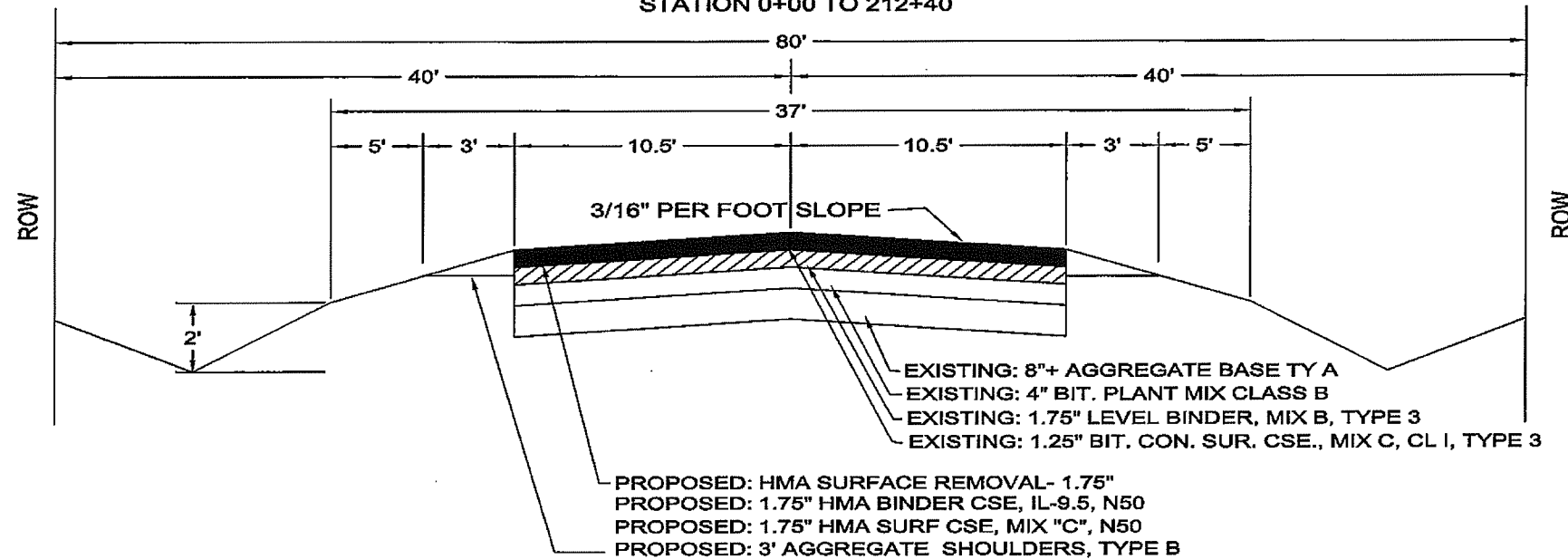
APPROVED	<i>Gregory L. Perkinson</i> JANUARY 31, 2022 FORD COUNTY, COUNTY ENGINEER
PASSED	2.22.22 <i>Steve Chavez</i> DISTRICT 3 ENGINEER OF LOCAL ROADS & STREETS
Releasing for Bid Based on Limited Review	2.22.22 <i>Paul H. ...</i> REGION 2 ENGINEER

STATE OF ILLINOIS DEPARTMENT OF TRANSPORTATION



FAS NO.	SECTION	COUNTY	TOTAL SHEETS	SHEET NO.
334	18-00125-00-RS		3	2
PROJECT IQED(180)				
CONTRACT # 87771				

**TYPICAL CROSS SECTION  
SECTION 18-00125-00-RS  
STATION 0+00 TO 212+40**



**\*\* NOTE: OMIT PAVING BETWEEN STA. 53+52 TO 54+34 (IL RT 115)\*\***  
**\*\* NOTE: HMA SURF. CSE ONLY STA. 131+80 TO 132+50 (# 027-3329)\*\***

STRUCTURAL DESIGN  
STA. 0+00 TO STA. 212+40  
SEC. 18-00125-00-RS

STRUCTURAL DESIGN TRAFFIC YEAR	2031
CURRENT A.D.T.	400
A.D.T. 2031	450
P.V.	396
S.U.	32
M.U.	22
CLASS	III
MINIMUM SOIL SUPPORT IBV	3
TRAFFIC FACTOR	0.120
Dt REQUIRED	3.00
EXISTING BASE:	
8"+ AGGREGATE BASE	8" X 0.08 = 0.640
4"+ BIT CONC PLANT MIX B	4" X 0.17 = 0.680
1.75"+ BIT. CONC LEVEL BINDER	1.75" X 0.30 = 0.525
1.25" BIT. CONC CL I (POST 1955)	1.25" X 0.30 = 0.375
<b>SUBTOTAL EXISTING</b>	<b>2.220</b>
PROPOSED:	
COLD MILL 1.75" EXISTING SURFACE	1.75" X - 0.30 = - 0.525
1.75" HMA BINDER CSE, IL 9.5, N50	1.75" X 0.40 = 0.700
1.75" HMA SURF. CSE., IL 9.5, MIX "C", N50	1.75" X 0.40 = 0.700
<b>Dt TOTAL</b>	<b>3.095</b>

SUMMARY OF QUANTITIES

CONSTRUCTION TYPE CODE 0004

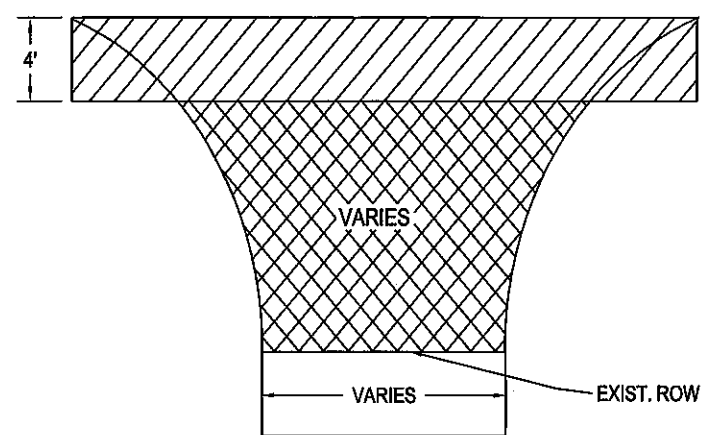
CODE NO.	ITEM	UNIT	QUANTITY
* 40600290	BITUMINOUS MATERIALS (TACK COAT)	POUND	33,745
40600990	TEMPORARY RAMP	SQ YD	70
* 40602978	HOT-MIX ASPHALT BINDER COURSE, IL-9.5, N50	TON	4,845
* 40604050	HOT-MIX ASPHALT SURFACE COURSE, IL-9.5, MIX "C", N50	TON	4,845
40800050	INCIDENTAL HOT-MIX ASPHALT SURFACING	TON	50
44000156	HOT-MIX ASPHALT SURFACE REMOVAL, 1-3/4"	SQ YD	50,250
* 48101200	AGGREGATE SHOULDERS, TYPE B	TON	2,000
* 67100100	MOBILIZATION	L SUM	1
70100460	TRAFFIC CONTROL AND PROTECTION, STANDARD 701306	L SUM	1
70300100	SHORT TERM PAVEMENT MARKING	FOOT	10,580
70300150	SHORT TERM PAVEMENT MARKING REMOVAL	SQ FT	705
# 78001110	PAINT PAVEMENT MARKING - LINE 4"	FOOT	6,785

\* INDICATES SEE SPECIAL PROVISIONS  
# INDICATES SPECIALTY ITEM

**HMA MIXTURE REQUIREMENT TABLE**

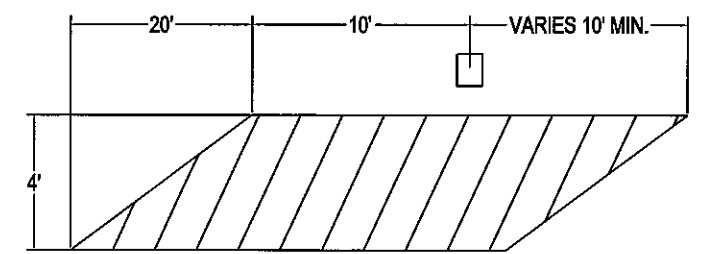
LOCATION (S):	MAINLINE	MAINLINE	INTERSECTIONS
MIXTURE USE (S):	HMA BINDER	HMA SURFACE	HMA INCIDENTAL
BINDER GRADE (PG):	PG 64-22	PG 64-22	PG 64-22
DESIGN AIR VOIDS:	4.0 % @ N50	4.0 % @ N50	4.0 % @ N50
MIX COMPOSITION:	IL 9.5	IL 9.5	IL 9.5
FRICTION AGGREGATE:	N/A	MIXTURE C	MIXTURE C
MIXTURE WEIGHT:	112.0 LB/SY/INCH	112.0 LB/SY/INCH	112.0 LB/SQ YD/INCH
QUALITY MANAGEMENT PROGRAM:	QCQA	QCQA	QCQA
SUBLOT SIZE:	N/A	N/A	N/A
DENSITY TEST METHOD:	LR 1030	LR1030	SATISFACTION OF ENGINEER
MATERIAL TRANSFER DEVICE (REQUIRED):	NO	NO	NO

FAS NO.	SECTION	COUNTY	TOTAL SHEETS	SHEET NO.
334	18-00125-00-RS		3	3
PROJECT IQED(180) CONTRACT # 87771				



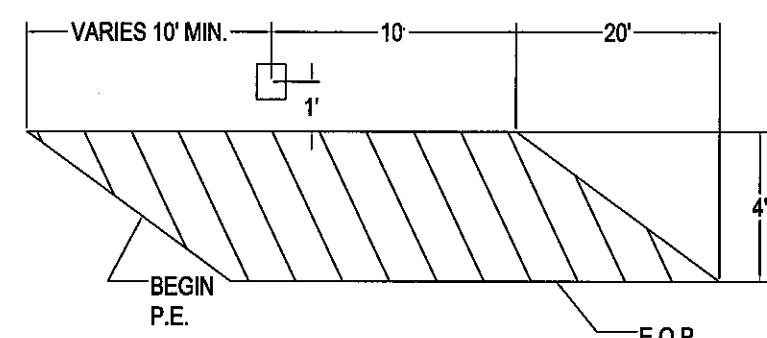
**TYPICAL SIDE ROAD RETURN**

3 EACH  
 0+70 LT & RT (1400E)  
 106+55 LT & RT (1600E)  
 159+75 LT & RT (1700E)



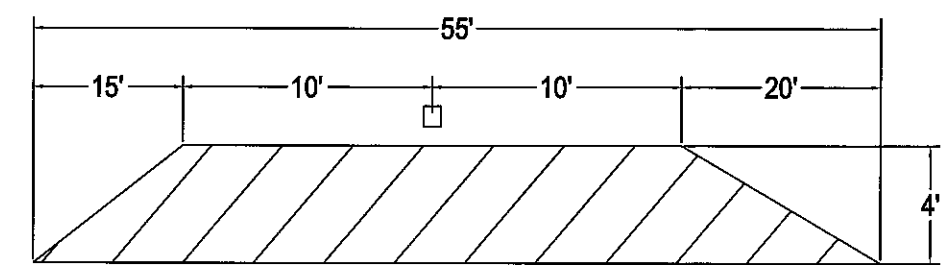
**TYPICAL MAILBOX FOLLOWING**

0 EACH



**TYPICAL MAILBOX LEAD IN**

0 EACH

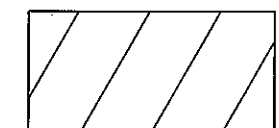


**TYPICAL MAILBOX TURN OUT**

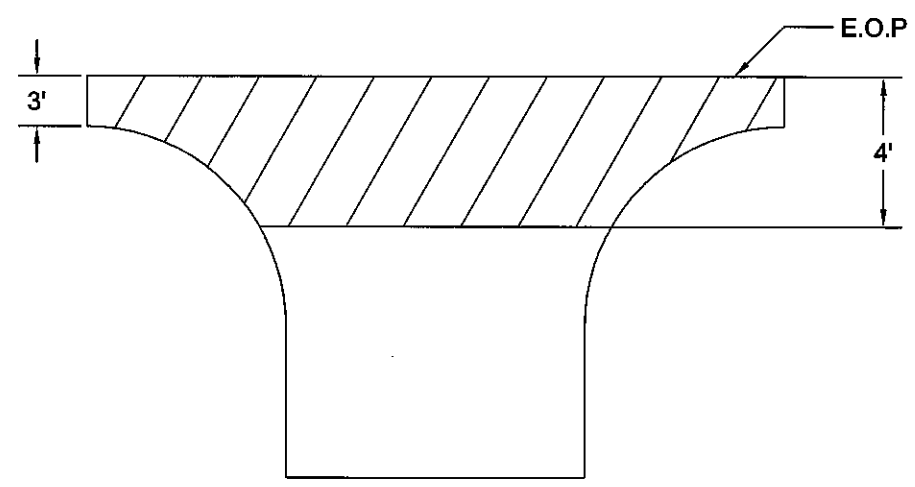
0 EACH



AREA TO BE PAID AS  
INCIDENTAL BITUMINOUS SURFACING



AREA TO BE CONSTRUCTED  
DURING MAINLINE PAVING OPERATIONS  
SLOPE = 3/4" PER FOOT



**TYPICAL PRIVATE ENTRANCE**

2 EACH  
 36+75 RT  
 40+40 RT

**NOTES**

1. USE SAME MAINLINE MATERIAL FOR SIDE ROAD RETURNS, PRIVATE ENTRANCES AND MAILBOXES.
2. AGGREGATE SHOULDERS TO BE PLACED BEHIND SIDE ROAD RETURNS, PRIVATE ENTRANCES AND MAILBOXES AS DIRECTED BY THE ENGINEER.
3. SHORT TERM PAVEMENT MARKINGS TO BE REMOVED BY THE CONTRACTOR.
4. THE FOLLOWING APPLICATION RATES HAVE BEEN ASSUMED IN CALCULATING QUANTITIES:

AGGREGATE SHOULDERS	2.05 TON / CU YD
BIT MATL (TK CT)	0.05 LBS / SQ FT
HOT MIX ASPHALT	112 # / SQ YD / INCH
SHORT TERM PVMT MKING	4 FT / 40 FT OF APPL.