



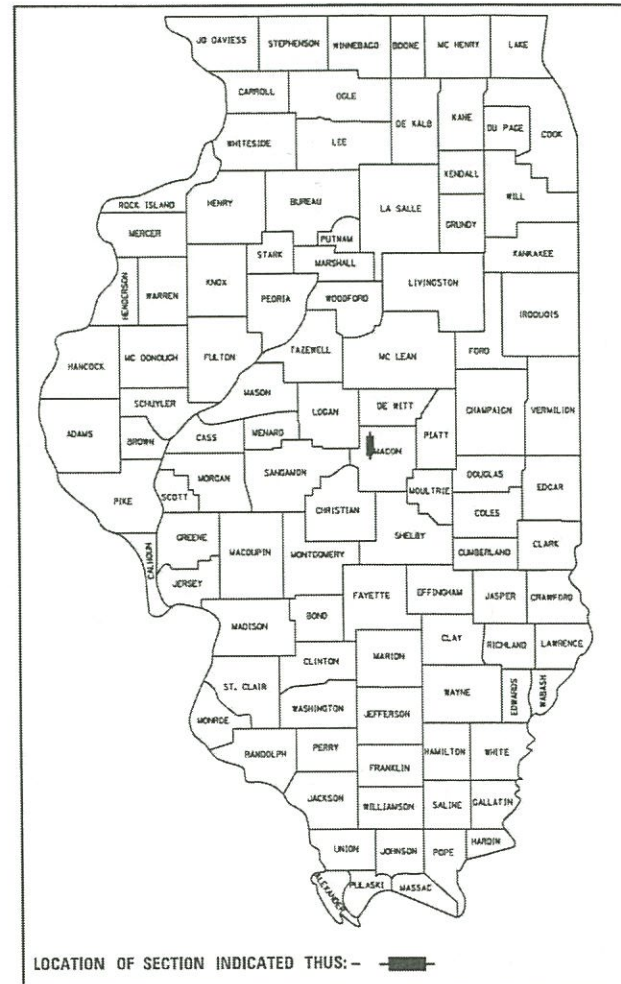
UNDERGROUND FACILITIES, STRUCTURES AND UTILITIES HAVE BEEN PLOTTED FROM AVAILABLE SURVEYS AND RECORDS AND THEIR LOCATIONS MUST BE CONSIDERED APPROXIMATE ONLY. THERE MAY BE OTHERS, THE EXISTENCE OF WHICH IS PRESENTLY NOT KNOWN. THE DEPTH OF UTILITIES IS ASSUMED TO BE NORMAL AND CUSTOMARY. THE CONTRACTOR SHALL VERIFY LOCATION AND DEPTH OF ALL UTILITIES PRIOR TO CONSTRUCTION.

04-29-2022 LETTING ITEM 155 STATE OF ILLINOIS DEPARTMENT OF TRANSPORTATION DIVISION OF HIGHWAYS

F.A. RTE.	SECTION	COUNTY	TOTAL SHEETS	SHEET NO.
	19-00001-01-SW	MACON	16	1
		ILLINOIS	CONTRACT NO. 95915	

PLANS FOR PROPOSED LOCAL AGENCY IMPROVEMENT

SAFE ROUTES TO SCHOOL (SRTS) SECTION 19-00001-00-SW PROJECT 9J9D(390) PROPOSED SIDEWALK CONSTRUCTION VILLAGE OF WARRENSBURG C-97-054-22



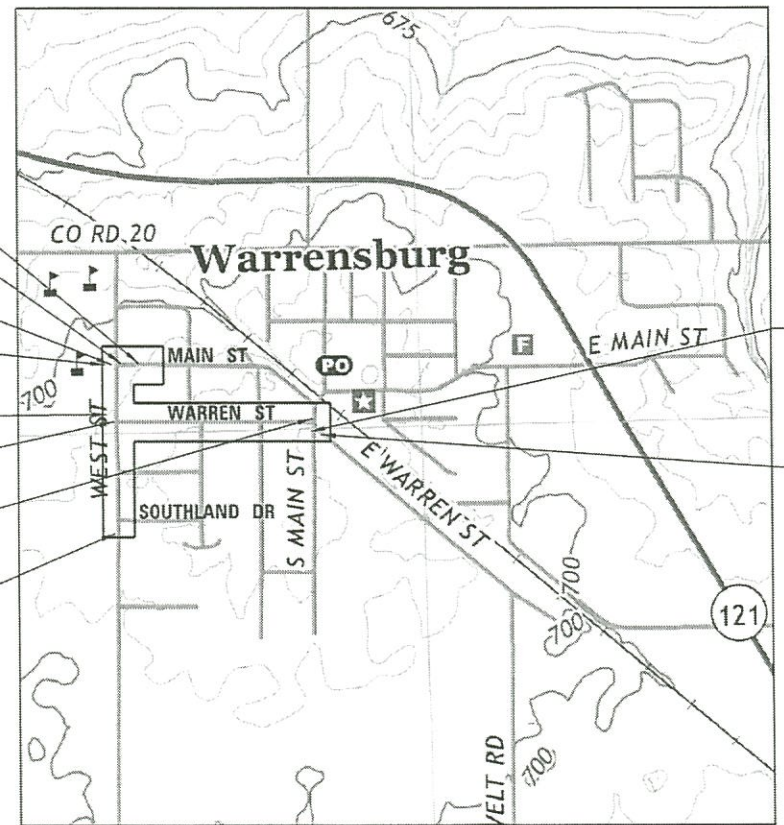
INDEX OF SHEETS

- 1 COVER
- 2 GENERAL NOTES, ALIGNMENT, & BENCHMARKS
- 3 SUMMARY OF QUANTITIES
- 4 TYPICAL SECTIONS & DETAILS
- 5-10 PLAN AND PROFILES
- 11-16 RAMP AND INTERSECTION DETAILS

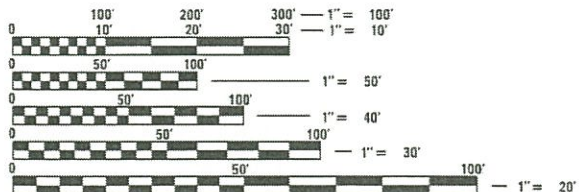
HIGHWAY STANDARDS

- 000001-08 STANDARD SYMBOLS, ABBREVIATIONS AND PATTERNS
- 001006 DECIMAL OF AN INCH AND OF A FOOT
- 424001-11 PERPENDICULAR CURB RAMPS FOR SIDEWALKS
- 424021-06 DEPRESSED CORNER FOR SIDEWALKS
- 442201-03 CLASS C AND D PATCHES
- 606001-08 CONCRETE CURB TYPE B AND COMBINATION CONCRETE CURB AND GUTTER
- 701006-05 OFF-RD OPERATIONS, 2L, 2W, 15' TO 24" FROM PAVEMENT EDGE
- 701501-06 URBAN LANE CLOSURE, 2L, 2W, UNDIVIDED
- 701801-06 SIDEWALK, CORNER OR CROSSWALK CLOSURE
- 701901-08 TRAFFIC CONTROL DEVICES
- 720001-01 SIGN PANEL MOUNT DETAILS
- 720006-04 SIGN PANEL ERECTION DETAILS
- 728001-01 TELESCOPING STEEL SIGN SUPPORT

- END SIDEWALK MAIN ST STA 2001+82.27
- BEGIN SIDEWALK MAIN ST STA 2000+14.83
- END SIDEWALK WEST ST STA 1012+13.17 24.4' LT
- BEGIN SIDEWALK WEST ST STA 1012+13.17 43.1' LT
- END SIDEWALK WEST ST STA 1009+15.41
- BEGIN SIDEWALK WARREN ST STA 4000+09.72
- END SIDEWALK WARREN ST STA 4013+24.46
- BEGIN SIDEWALK WEST ST STA 1001+53.55



LOCATION MAP



FULL SIZE PLANS HAVE BEEN PREPARED USING STANDARD ENGINEERING SCALES. REDUCED SIZED PLANS WILL NOT CONFORM TO STANDARD SCALES. IN MAKING MEASUREMENTS ON REDUCED PLANS, THE ABOVE SCALES MAY BE USED.

J.U.L.I.E. JOINT UTILITY LOCATION INFORMATION FOR EXCAVATION 1-800-892-0123 OR 811

CHASTAIN & ASSOCIATES LLC
CONSULTING ENGINEERS

DECATUR, IL
ROCKFORD, IL
BENTON, IL
BELOIT, WI
(833) 424-2782

SCHAUMBURG, IL
CHAMPAIGN, IL
LAFAYETTE, IN
PADUCAH, KY
184-001397

ADT:	WEST ST. 375	MAIN ST. 175	WARREN ST. 650
DESIGN SPEED:	30 MPH	30 MPH	30 MPH
ROAD CLASSIFICATION:	LOCAL STREET	LOCAL STREET	LOCAL STREET

- BEGIN SIDEWALK WARREN ST STA 5000+03.10
- END SIDEWALK WARREN ST STA 5000+74.78



COREY M. FRANZEN, P.E. DATE 2/16/2022
LICENSE EXPIRES 02/28/22

STATE OF ILLINOIS DEPARTMENT OF TRANSPORTATION DIVISION OF HIGHWAYS

APPROVED: *[Signature]* 2/24/22
VILLAGE OF WARRENSBURG

PASSED: *[Signature]* 02/25/22
DISTRICT 7 ENGINEER OF LOCAL ROADS AND STREETS

RELEASED FOR BID BASED ON LIMITED REVIEW: *[Signature]* 02/25/22
REGIONAL ENGINEER

PRINTED BY THE AUTHORITY OF THE STATE OF ILLINOIS

CONTRACT NO. 95915

GENERAL NOTES

ALIGNMENT - MAIN STREET

POT	N 1,189,594.4400	E 778,382.5954	Sta 40+00.00
Course from POT to POT S 89° 17' 23.18" E Dist 90.3710			
POT	N 1,189,593.3198	E 778,472.9594	Sta 40+90.37
Course from POT to POT S 44° 17' 23.18" E Dist 12.1475			
POT	N 1,189,584.6245	E 778,481.4419	Sta 41+02.52
Course from POT to POT S 89° 24' 13.47" E Dist 183.5358			
POT	N 1,189,582.7145	E 778,664.9677	Sta 42+86.05

ALIGNMENT - WEST STREET

POT	N 1,188,507.4775	E 778,405.3719	Sta 10+00.00
Course from POT to PC N 0° 42' 36.82" E Dist 186.3189			
P.C. Station	11+86.32	N 1,188,693.7821	E 778,407.6815
P.I. Station	11+90.69	N 1,188,698.1483	E 778,407.7356
P.R.C. Station	11+94.96	N 1,188,702.2744	E 778,406.3064
P.I. Station	11+98.46	N 1,188,705.5753	E 778,405.1630
P.T. Station	12+01.88	N 1,188,709.0683	E 778,405.2063
Course from PT to PC N 0° 42' 36.82" E Dist 176.7317			
P.C. Station	13+78.61	N 1,188,885.7864	E 778,407.3970
P.I. Station	13+84.04	N 1,188,891.2128	E 778,407.4643
P.R.C. Station	13+89.30	N 1,188,896.1229	E 778,409.7753
P.I. Station	13+94.73	N 1,188,901.0330	E 778,412.0863
P.T. Station	13+99.99	N 1,188,906.4593	E 778,412.1536
Course from PT to PC N 0° 42' 37.07" E Dist 45.6870			
P.C. Station	14+45.68	N 1,188,952.1428	E 778,412.7199
P.I. Station	14+56.18	N 1,188,962.6441	E 778,412.8501
P.R.C. Station	14+65.56	N 1,188,970.0880	E 778,405.4418
P.I. Station	14+78.16	N 1,188,979.0206	E 778,396.5519
P.T. Station	14+89.42	N 1,188,991.6222	E 778,396.7081
Course from PT to POT N 0° 42' 36.82" E Dist 263.6058			
POT	N 1,189,255.2077	E 778,399.9756	Sta 17+53.03
Course from POT to POT N 0° 42' 36.82" E Dist 5.0000			
POT	N 1,189,260.2073	E 778,400.0376	Sta 17+58.03
Course from POT to PI N 0° 42' 36.82" E Dist 25.1734			
PI	N 1,189,285.3788	E 778,400.3496	Sta 17+83.20
Course from PI to POT N 1° 42' 06.58" W Dist 5.0044			
Point POT	N 1,189,290.3810	E 778,400.2010	Sta 17+88.21

ALIGNMENT - WARREN STREET

Point POT	N 1,189,259.6383	E 778,445.5347	Sta 20+00.00
Course from POT to POT S 89° 17' 00.41" E Dist 1,330.0638			
Point POT	N 1,189,243.0046	E 779,775.4946	Sta 33+30.06

- EXCEPT WHERE DESIGNATED OTHERWISE, THE LOCATIONS AND/OR DEPTHS OF ABOVE GROUND AND UNDERGROUND UTILITIES SHOWN MUST BE CONSIDERED APPROXIMATE. THE CONTRACTOR SHALL BE RESPONSIBLE FOR DETERMINING EXACT LOCATIONS OF ALL UTILITIES. CONTACT JULIE AT 1-800-892-0123 OR 811 AND ALL OTHER UTILITY OWNERS PRIOR TO EXCAVATION OR CONSTRUCTION. THE CONTRACTOR SHALL USE SPECIAL CARE WHEN CONDUCTING OPERATIONS NEAR UTILITIES SO AS TO PREVENT DAMAGE TO THEM.
- WHERE EXISTING UTILITY POLES OR OTHER APPURTENANCES INTERFERE WITH THE FULL CONSTRUCTED WIDTH OF THE SIDEWALK, THE SIDEWALK SHALL BE CONSTRUCTED TO THE LINES AND GRADES SHOWN ON THE PLANS EXCEPT THAT A NOTCH OF SIDEWALK SHALL BE OMITTED AT THE INTERFERENCE. THE NOTCH SHALL BE TAPERED FROM THE FULL SIDEWALK WIDTH TO THE REDUCED WIDTH AT A RATE OF 1:1 EACH SIDE. MAINTAIN A MINIMUM WIDTH OF FOUR FEET (4') AT ALL NEW SIDEWALK LOCATIONS. THIS METHOD OF CONSTRUCTION SHALL APPLY AT LOCATIONS WHERE WATER METERS ARE NOT TO BE ADJUSTED OR RELOCATED. USE PREFORMED JOINT FILLER WHERE THE SIDEWALK IS DIRECTLY ADJACENT TO EACH ITEM.
- CLASS D PATCHES ARE SPECIFIED AT ISOLATED LOCATIONS WHERE THE EXISTING PAVEMENT CONSISTS OF AN OIL AND CHIP SURFACE. THE THICKNESS OF EACH HMA PAVEMENT PATCH SHALL BE 5" UNLESS OTHERWISE DIRECTED BY THE ENGINEER. IF ADJUSTMENTS TO THE THICKNESS ARE REQUIRED, QUANTITIES SHALL BE ADJUSTED ACCORDING TO ARTICLE 442.10. EXCAVATION REQUIRED TO PLACE THE PAVEMENT SHALL BE INCLUDED IN THE COST OF THE PATCH.
- PAVEMENT PATCHES SHALL BE CONSTRUCTED TO MATCH THE ELEVATIONS OF THE SIDEWALK RAMPS WHERE THEY MEET. PORTIONS OF THE PERIMETER OF EACH PATCH ADJACENT TO EXISTING PAVEMENT SHALL BE CONSTRUCTED TO MATCH THE ELEVATIONS OF THE EXISTING PAVEMENT. THE REMAINDER OF THE PERIMETER SHALL BE CONSTRUCTED AS A SMOOTH TRANSITION FROM THE SIDEWALK RAMPS TO THE EXISTING PAVEMENT ELEVATIONS. CROSS SLOPES SHALL BE GENERALLY PLANAR SLOPING DOWN TOWARD THE SIDEWALK RAMPS.
- NEATLY GRADE AREAS OF DISTURBANCE ADJACENT TO SIDEWALK CONSTRUCTION WITH TRANSITIONS TO EXISTING GRADE TO MAINTAIN DRAINAGE. PRE- CONSTRUCTION DRAINAGE PATTERNS SHALL BE MAINTAINED. COORDINATE WITH THE ENGINEER FOR ITEMS OF CONSTRUCTION THAT MAY IMPEDE DRAINAGE. UPON COMPLETION OF CONSTRUCTION, ALL DISTURBED AREAS SHALL BE SEEDED AND MULCHED IN ACCORDANCE WITH SECTION 250 AND SECTION 251 OF THE STANDARD SPECIFICATIONS.
- AT LOCATIONS WHERE SIDEWALK CONSTRUCTION CROSSES OR ABUTS EXISTING AGGREGATE DRIVEWAYS, THE MATERIAL EXCAVATED FROM WITHIN THE DRIVEWAY SHALL BE STOCKPILED AND USED TO BACKFILL THE EXCAVATION ADJACENT TO THE NEW SIDEWALK. COMPACTION OF THE BACKFILL MATERIAL SHALL BE TO THE SATISFACTION OF THE ENGINEER. THIS WORK WILL BE INCLUDED IN THE COST OF EARTH EXCAVATION.
- SIDEWALK RAMPS SHALL MEET STABLE PAVEMENT AT STREET LOCATIONS WHERE THEY MEET AN EXISTING OIL AND CHIP PAVEMENT SURFACE. LOOSE GRAVEL OR CHIP SHALL BE SWEEPED AWAY PRIOR TO ESTABLISHING THE FINAL MATCH ELEVATIONS. THIS WORK WILL NOT BE PAID FOR SEPARATELY, BUT INCLUDED IN THE COST OF THE SIDEWALK.

- THE VILLAGE OF WARRENSBURG WILL PROVIDE THE REMOVAL AND RELOCATION OF STREET SIGNS AS REQUIRED. COORDINATE WITH THE VILLAGE IN ADVANCE OF PERFORMING WORK THAT REQUIRES RELOCATION OF ONE OR MORE SIGNS. TEMPORARY SIGN PLACEMENT MAY BE REQUIRED. COORDINATE CONSTRUCTION WITH TEMPORARY SIGN LOCATIONS.
- ALL SAW CUTS FOR REMOVAL WILL NOT BE PAID FOR SEPARATELY, BUT SHALL BE INCLUDED IN THE COST OF THE REMOVAL ITEMS.
- THE CONTRACTOR SHALL TAKE REASONABLE PRECAUTIONS TO PROTECT PUBLIC AND PRIVATE PROPERTY. IF AT ANY TIME THE CONTRACTOR DAMAGES OR DESTROYS PUBLIC OR PRIVATE PROPERTY, THE CONTRACTOR SHALL, AT HIS OWN EXPENSE, RESTORE SUCH PROPERTY TO A CONDITION EQUAL TO THAT EXISTING BEFORE SUCH DAMAGE.
- IT IS THE CONTRACTOR'S RESPONSIBILITY TO VERIFY ALL DIMENSIONS AND CONDITIONS EXISTING IN THE FIELD PRIOR TO CONSTRUCTION AND ORDERING MATERIALS.
- THE CONTRACTOR SHALL BE SOLELY RESPONSIBLE FOR THE MEANS, METHODS, TECHNIQUES, SEQUENCE AND PROCEDURES OF CONSTRUCTION.
- ALL ELEVATIONS ARE BASED ON THE NORTH AMERICAN VERTICAL DATUM OF 1988 (NAVD 88). THE PROPOSED GRADE ELEVATIONS SHOWN ON THE PLAN AND PROFILE SHEETS ARE THE ELEVATIONS FOR THE FINISHED SURFACE AT LOCATIONS AS INDICATED.
- ALL COORDINATES SHOWN ARE BASED ON THE ILLINOIS COORDINATE SYSTEM, EAST ZONE, NORTH AMERICAN DATUM OF 1983, ADJUSTMENT OF 2011 (NAD1983).

BITUMINOUS MIXTURE REQUIREMENTS

MIXTURE USES	AC/PG	DESIGN AIR VOIDS	MIXTURE COMPOSITION	FRICTION AGGREGATE
HMA PATCHES	PG-64-22	4.0% @ N _{min} = 50	IL-9.5	MIX C

Benchmark	Elev(Z)	Description	Station	Offset	Alignment
BM#3	712.92	"T" IN TENN ON THE FIRE HYDRANT NE OF WARREN ST AND POWERS ST	25+40	9' RT.	Warren St
BM#5	708.91	"M" IN MUELLER ON THE FIRE HYDRANT NE OF SOUTHLAND ST AND WEST ST	10+74	61' RT.	West St
BM#6	709.71	"M" IN MUELLER ON THE FIRE HYDRANT SE OF WEST ST AND WARREN ST	16+94	74' RT.	West St

Control Point#	North(Y)	East(X)	Elev(Z)	Description	Station	Offset	Alignment
1	1189172.881	779700.968	710.28	1/2 IP W/ CAP, NE COR OF ILLINI PARK	32+56.58	71.05' RT.	Warren St
4	1189207.426	778471.122	706.63	1/2 IP W/ CAP, SE COR WEST & WARREN	20+26.24	51.89' RT.	Warren St
6	1189637.700	778869.604	707.18	1/2 IP W/ CAP, NW COR POWERS & W.MAIN			Main St
5	1188802.630	778397.986	708.59	1/2 IP W/ CAP, W.SIDE OF WEST ST OPP. HOUSE #300	12+95.35	-8.38' LT.	West St

FILE NAME = I:\Municipalities\Village of Warrensburg\301.01_SRTS W-L_Grade_Sch Ph 2\CADD\CADD.Civil\301.01_SHTXX_gennotes.dgn

USER NAME = switt	DESIGNED - CMF	REVISED -
	DRAWN - RLK	REVISED -
PLOT SCALE = 48,0000 " / in.	CHECKED - CMF	REVISED -
PLOT DATE = 3/17/2022	DATE - 12/21/2021	REVISED -



DECATUR, IL SCHAUMBURG, IL
 ROCKFORD, IL CHAMPAIGN, IL
 BENTON, IL LAFAYETTE, IN
 PADUCAH, KY
 (833) 424-2782 184-001397

**WARRENSBURG SRTS SIDEWALK IMPROVEMENTS
 GENERAL NOTES, ALIGNMENT, & BENCHMARKS**

SCALE: N/A SHEET NO. 1 OF 1 SHEETS STA. TO STA.

F.A. RTE.	SECTION	COUNTY	TOTAL SHEETS	SHEET NO.
	19-00001-00-SW	MACON	16	2
			CONTRACT NO. 95915	
ILLINOIS FED. AID PROJECT				

FILE NAME = I:\Municipalities\Village of Warrensburg\7301.01 SRTS W-L Grade Sch Ph 2\CADD\CADD\Civil\7301.01_SRTS_W-L_SHTXX_S00.dgn

CODE NO.	ITEM	UNIT	TOTAL QUANTITY
20200100	EARTH EXCAVATION	CU YD	155
25000100	SEEDING, CLASS 1	ACRE	0.5
25000400	NITROGEN FERTILIZER NUTRIENT	POUND	45
25000500	PHOSPHORUS FERTILIZER NUTRIENT	POUND	45
25000600	POTASSIUM FERTILIZER NUTRIENT	POUND	45
25100105	MULCH, METHOD 1	ACRE	0.5
35101400	AGGREGATE BASE COURSE, TYPE B	TON	23
42400200	PORTLAND CEMENT CONCRETE SIDEWALK 5 INCH	SQ FT	10914
42400300	PORTLAND CEMENT CONCRETE SIDEWALK 6 INCH	SQ FT	1088
42400800	DETECTABLE WARNINGS	SQ FT	218
44000200	DRIVEWAY PAVEMENT REMOVAL	SQ YD	93
44000600	SIDEWALK REMOVAL	SQ FT	6022
44201705	CLASS D PATCHES, TYPE II, 5 INCH	SQ YD	6
44201711	CLASS D PATCHES, TYPE IV, 5 INCH	SQ YD	42

CODE NO.	ITEM	UNIT	TOTAL QUANTITY
50105220	PIPE CULVERT REMOVAL	FOOT	49
542D0213	PIPE CULVERTS, CLASS D, TYPE 1 8"	FOOT	54
542D0215	PIPE CULVERTS, CLASS D, TYPE 1 10"	FOOT	52
542D0217	PIPE CULVERTS, CLASS D, TYPE 1 12"	FOOT	12
60600605	CONCRETE CURB, TYPE B	FOOT	27
67100100	MOBILIZATION	L SUM	1
Δ 72000100	SIGN PANEL - TYPE 1	SQ FT	104
Δ 72800100	TELESCOPING STEEL SIGN SUPPORT	FOOT	160
Δ 78001180	PAINT PAVEMENT MARKING - LINE 24"	FOOT	339
X7010216	TRAFFIC CONTROL AND PROTECTION, (SPECIAL)	L SUM	1
Z0004518	HOT-MIX ASPHALT DRIVEWAY PAVEMENT, 5"	SQ YD	91

Δ SPECIALTY ITEM S

USER NAME = switt	DESIGNED - CMF	REVISED -
DRAWN - RLK	CHECKED - CMF	REVISED -
PLDT SCALE = 48.0000' / 1"	DATE - 12/21/2021	REVISED -
PLDT DATE = 2/22/2022		

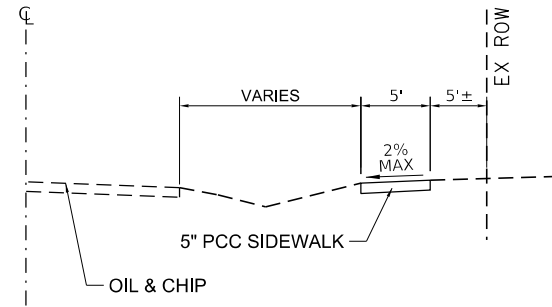
CHASTAIN & ASSOCIATES LLC
CONSULTING ENGINEERS

DECATUR, IL SCHAUMBURG, IL
ROCKFORD, IL CHAMPAIGN, IL
BENTON, IL LAFAYETTE, IN
 PADUCAH, KY
(833) 424-2782 184-001397

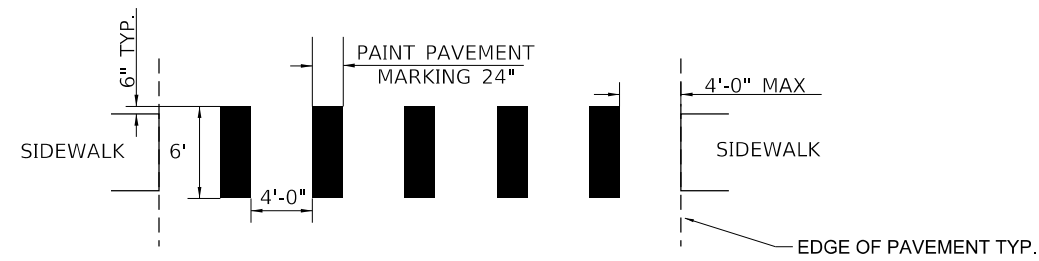
**WARRENSBURG SRTS SIDEWALK IMPROVEMENTS
SUMMARY OF QUANTITIES**

SCALE: N/A SHEET NO. 1 OF 1 SHEETS STA. TO STA.

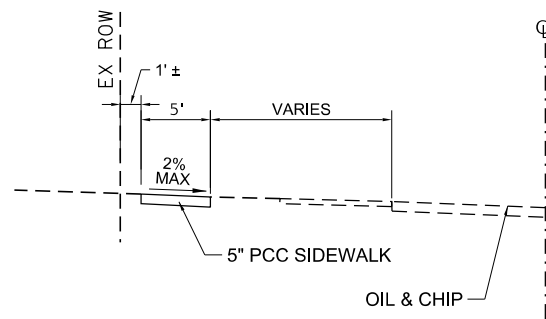
F.A. RTE.	SECTION	COUNTY	TOTAL SHEETS	SHEET NO.
	19-00001-00-SW	MACON	16	3
ILLINOIS FED. AID PROJECT			CONTRACT NO. 95915	



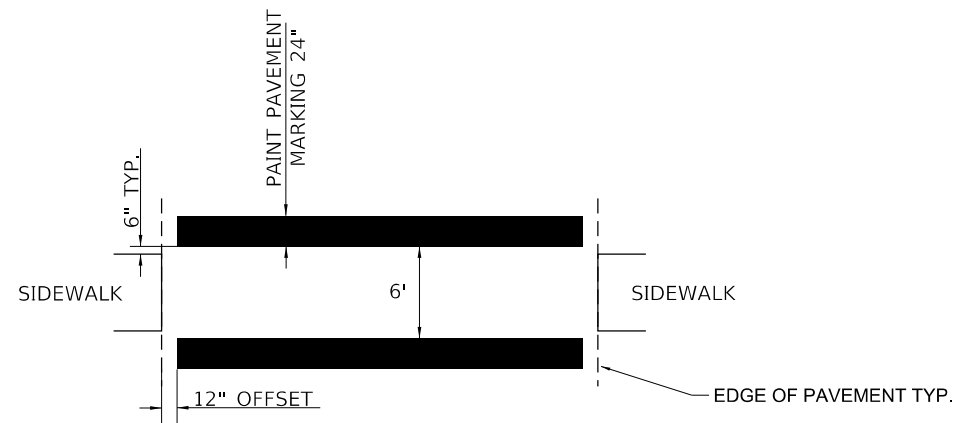
**MAIN STREET
TYPICAL CROSS SECTION**



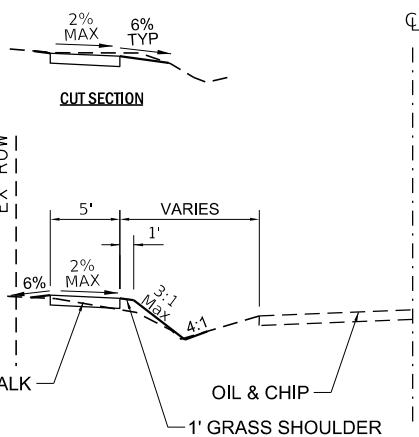
**LONGITUDINAL
TYPICAL STRIPING DETAIL**



**WARREN STREET
TYPICAL CROSS SECTION**



**TRANSVERSE
TYPICAL STRIPING DETAIL**



**WEST STREET
TYPICAL CROSS SECTION**

CUT SECTION

FILE NAME = I:\Municipalities\illage of Warrensburg\7301.01 SRTS W-L Grade Sch Ph 2\CADD\CADD.Gw1\7301.01_SHTXX.tgpaecs_REV.dgn

USER NAME = switt	DESIGNED - CMF	REVISED -
	DRAWN - RLK	REVISED -
PLOT SCALE = 40.0000' / in.	CHECKED - CMF	REVISED -
PLOT DATE = 2/22/2022	DATE - 12/21/2021	REVISED -

**CHASTAIN
& ASSOCIATES LLC**
CONSULTING ENGINEERS

DECATUR, IL SCHAUMBURG, IL
ROCKFORD, IL CHAMPAIGN, IL
BENTON, IL LAFAYETTE, IN
 PADUCAH, KY
(833) 424-2782 184-001397

**WARRENSBURG SRTS SIDEWALK IMPROVEMENTS
TYPICAL SECTIONS & DETAILS**

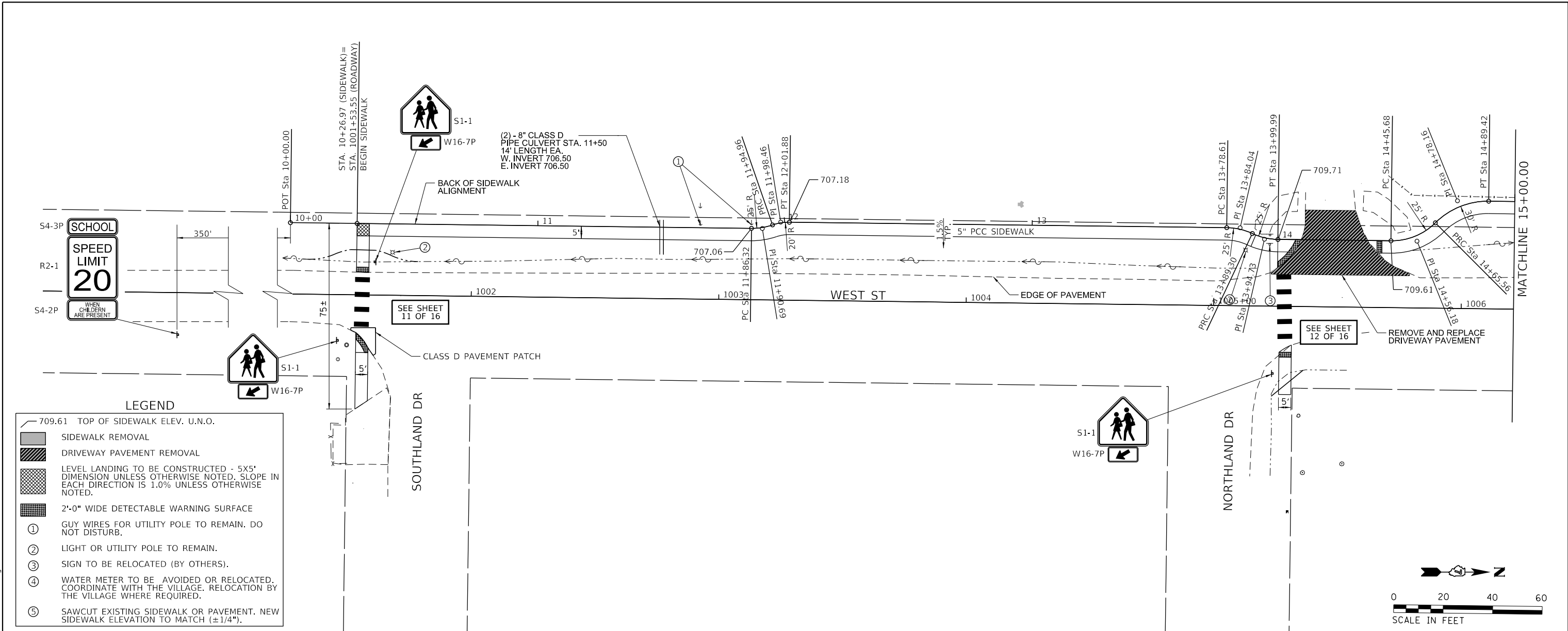
SCALE: SHEET NO. OF SHEETS STA. TO STA.

F.A. RTE.	SECTION	COUNTY	TOTAL SHEETS	SHEET NO.
	19-00001-00-SW	MACON	16	4
			CONTRACT NO. 95915	
ILLINOIS FED. AID PROJECT				

PLAN	SURVEYED	DATE
	PLOTTED	
	CHECKED	
	FILED	
	NO.	

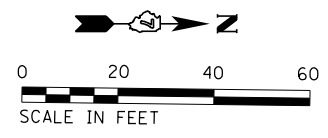
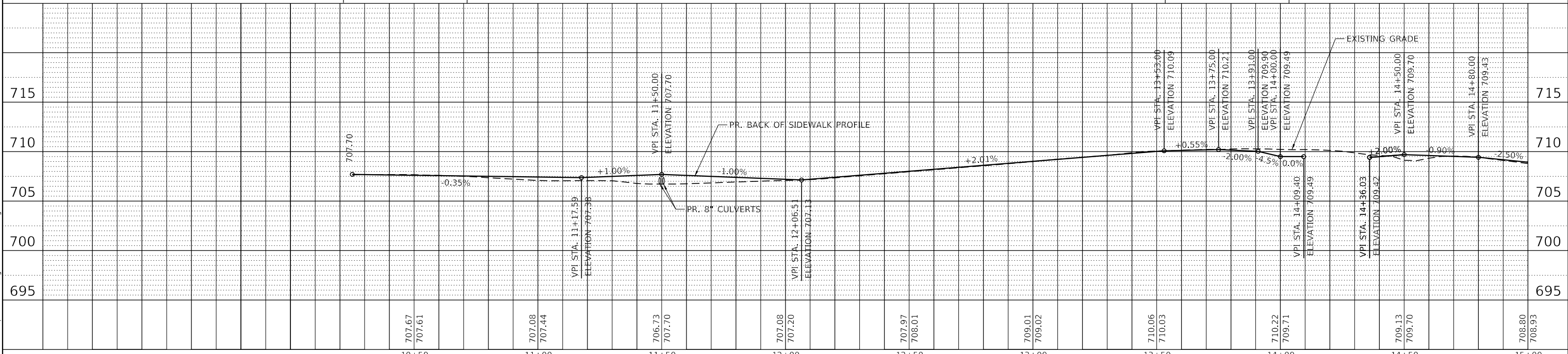
PROFILE	SURVEYED	DATE
	PLOTTED	
	CHECKED	
	FILED	
	NO.	

I:\Municipalities\Warrensburg\7301.01 SR'S W-L Grade - Sch Ph 2\CADD\CADD-Civil\7301.01_Sch-SW-P&P-WEST.dgn



LEGEND

- ① 709.61 TOP OF SIDEWALK ELEV. U.N.O.
- SIDEWALK REMOVAL
- DRIVEWAY PAVEMENT REMOVAL
- LEVEL LANDING TO BE CONSTRUCTED - 5X5' DIMENSION UNLESS OTHERWISE NOTED. SLOPE IN EACH DIRECTION IS 1.0% UNLESS OTHERWISE NOTED.
- 2'-0" WIDE DETECTABLE WARNING SURFACE
- ② GUY WIRES FOR UTILITY POLE TO REMAIN. DO NOT DISTURB.
- ③ LIGHT OR UTILITY POLE TO REMAIN.
- ④ SIGN TO BE RELOCATED (BY OTHERS).
- ⑤ WATER METER TO BE AVOIDED OR RELOCATED. COORDINATE WITH THE VILLAGE. RELOCATION BY THE VILLAGE WHERE REQUIRED.
- ⑥ SAWCUT EXISTING SIDEWALK OR PAVEMENT. NEW SIDEWALK ELEVATION TO MATCH (±1/4").



USER NAME = switt	DESIGNED - CMF	REVISED -
	DRAWN - RLK	REVISED -
PLOT SCALE = 40.0000' / in.	CHECKED - CMF	REVISED -
PLOT DATE = 2/22/2022	DATE - 12/21/2021	REVISED -

CHASTAIN & ASSOCIATES LLC
CONSULTING ENGINEERS

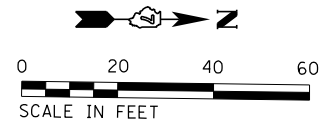
DECATUR, IL SCHAUMBURG, IL
ROCKFORD, IL CHAMPAIGN, IL
BENTON, IL LAFAYETTE, IN
 PADUCAH, KY

(833) 424-2782 184-001397

WARRENSBURG SR'S SIDEWALK IMPROVEMENTS
WEST STREET PLAN AND PROFILE

SCALE: SHEET NO. 1 OF 2 SHEETS STA. 10+00.00 TO STA. 15+00.00

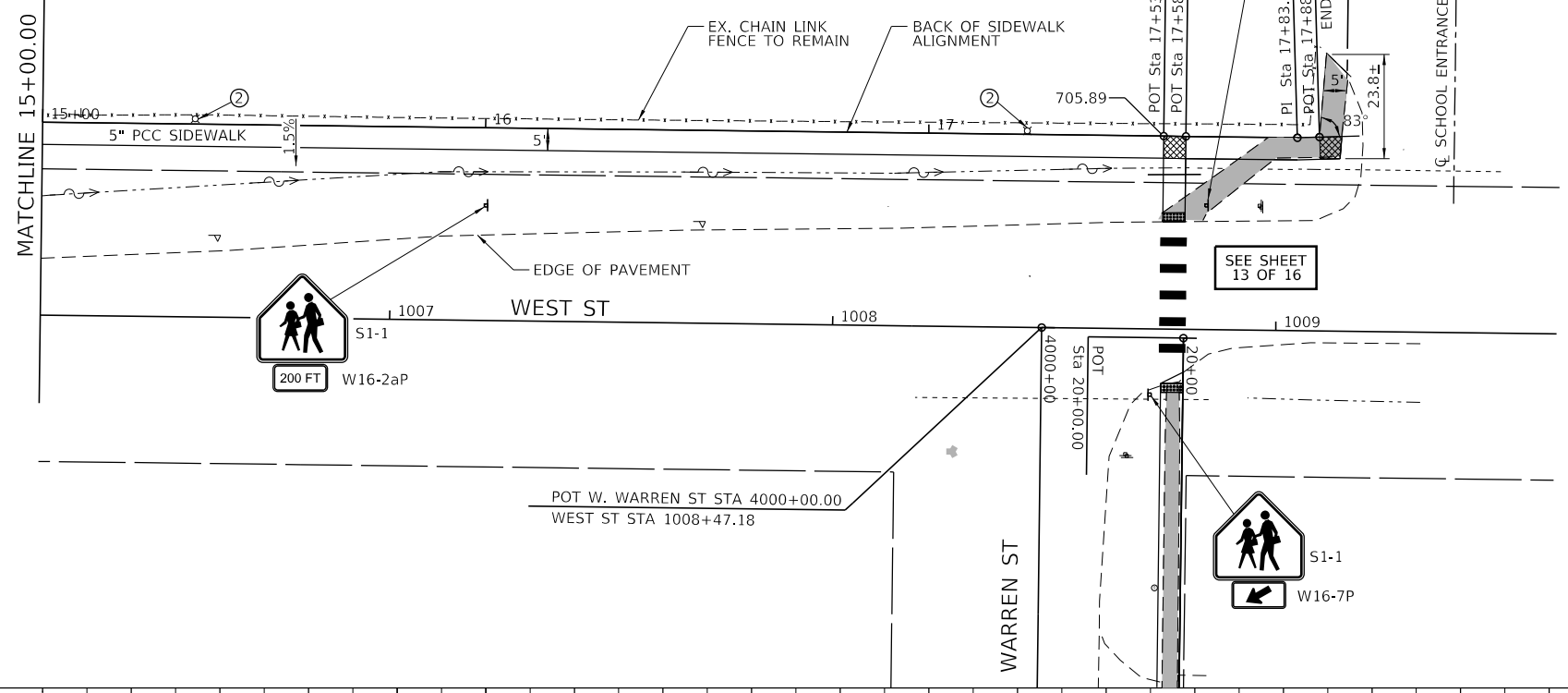
F.A. RTE.	SECTION	COUNTY	TOTAL SHEETS	SHEET NO.
	19-00001-00-SW	MACON	16	5
CONTRACT NO. 95915			ILLINOIS FED. AID PROJECT	



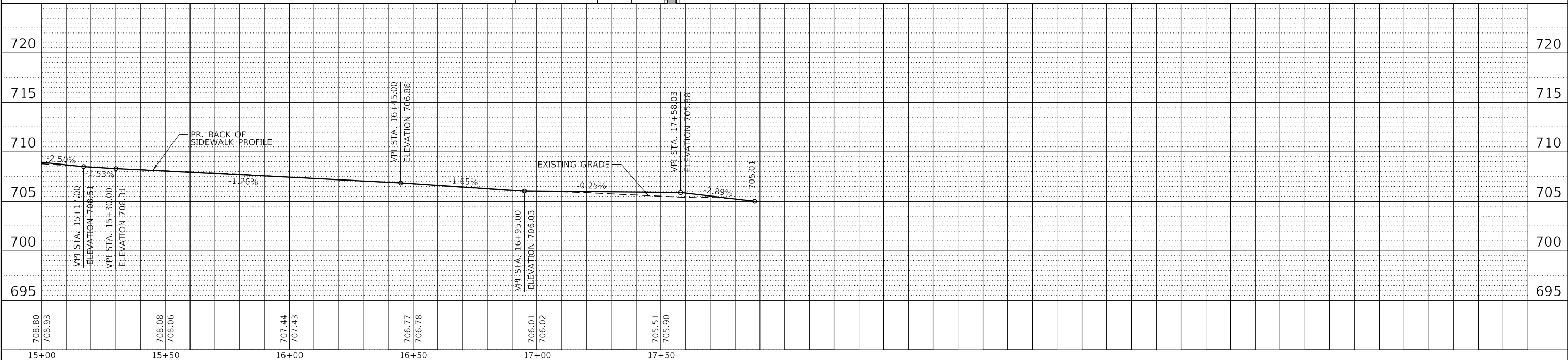
PLAN	SURVEYED	BY	DATE
	PLOTTED		
	ALIGNED		
	CHECKED		
	FILED		
	NO. _____		
	FILE NAME _____		

PROFILE	SURVEYED	BY	DATE
	PLOTTED		
	GRADES CHECKED		
	STRUCTURE NOTATIONS CHECKED		
	NO. _____		
	FILE NAME _____		

I:\Municipalities\Warrensburg\7301.01 SR'S W-L Grade Sch Ph 2\CADD\CADD-Civil\7301.01_SchXX.P&P_WES102.dgn



	709.61 TOP OF SIDEWALK ELEV. U.N.O.
	SIDEWALK REMOVAL
	DRIVEWAY PAVEMENT REMOVAL
	LEVEL LANDING TO BE CONSTRUCTED - 5X5' DIMENSION UNLESS OTHERWISE NOTED. SLOPE IN EACH DIRECTION IS 1.0% UNLESS OTHERWISE NOTED.
	2'-0" WIDE DETECTABLE WARNING SURFACE
①	GUY WIRES FOR UTILITY POLE TO REMAIN. DO NOT DISTURB.
②	LIGHT OR UTILITY POLE TO REMAIN.
③	SIGN TO BE RELOCATED (BY OTHERS).
④	WATER METER TO BE AVOIDED OR RELOCATED. COORDINATE WITH THE VILLAGE. RELOCATION BY THE VILLAGE WHERE REQUIRED.
⑤	SAWCUT EXISTING SIDEWALK OR PAVEMENT. NEW SIDEWALK ELEVATION TO MATCH (±1/4").



USER NAME = switt	DESIGNED - CMF	REVISED -
	DRAWN - RLK	REVISED -
PLOT SCALE = 48.0000' / in.	CHECKED - CMF	REVISED -
PLOT DATE = 2/22/2022	DATE - 12/21/2021	REVISED -

CHASTAIN & ASSOCIATES LLC
CONSULTING ENGINEERS

DECATUR, IL SCHAUMBURG, IL
ROCKFORD, IL CHAMPAIGN, IL
BENTON, IL LAFAYETTE, IN
 PADUCAH, KY

(833) 424-2782 184-001397

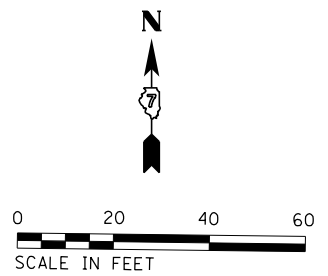
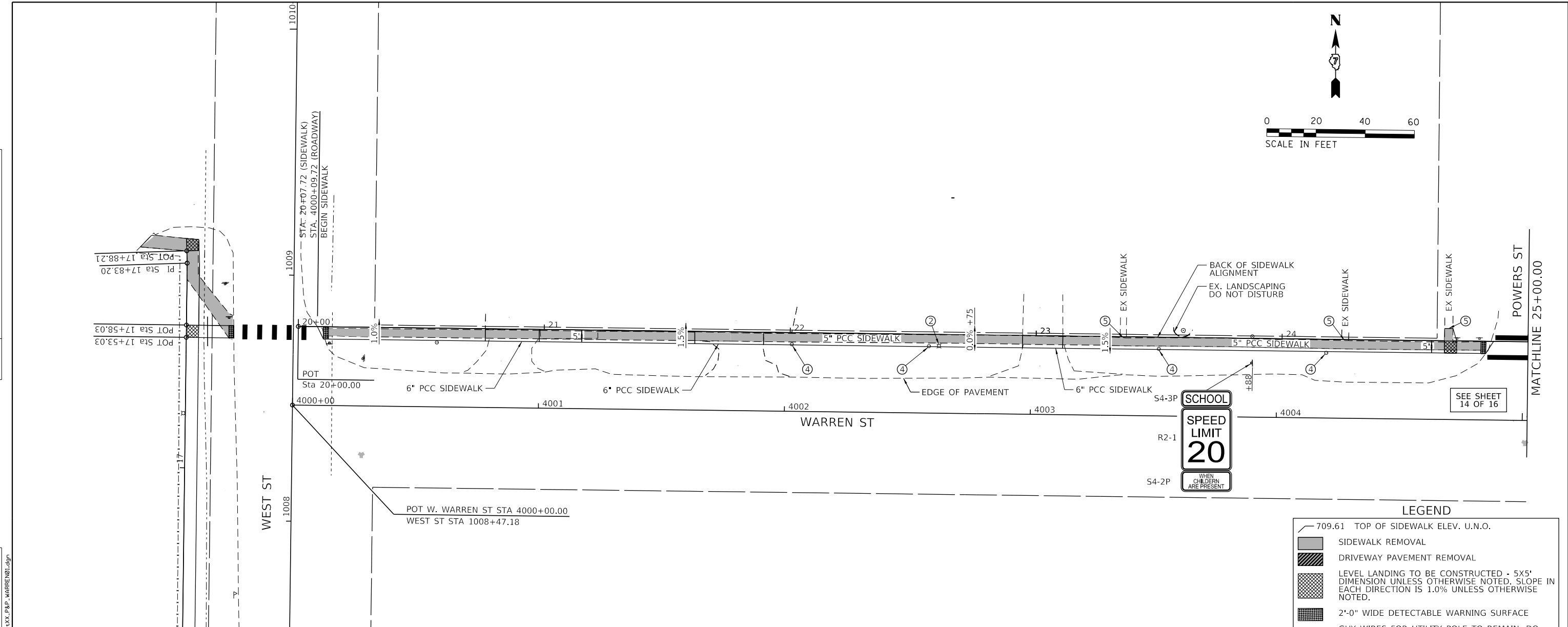
WARRENSBURG SR'S SIDEWALK IMPROVEMENTS
WEST STREET PLAN AND PROFILE

SCALE: SHEET NO. 2 OF 2 SHEETS STA. 15+00.00 TO STA. 17+88.21

F.A. RTE.	SECTION	COUNTY	TOTAL SHEETS	SHEET NO.
	19-00001-00-SW	MACON	16	6
			CONTRACT NO. 95915	
ILLINOIS FED. AID PROJECT				

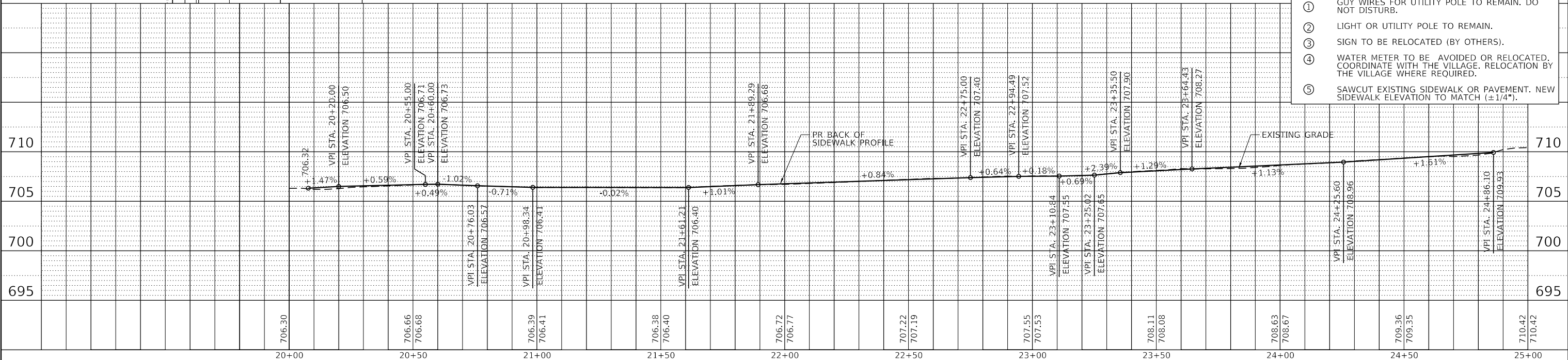
PLAN	SURVEYED	BY	DATE
	PLOTTED		
	GRADES CHECKED		
	ALIGNMENT CHECKED		
	STRUCTURE NOTATIONS CHECKED		
	NO. _____		
	FILE NAME		

PROFILE	SURVEYED	BY	DATE
	PLOTTED		
	GRADES CHECKED		
	ALIGNMENT CHECKED		
	STRUCTURE NOTATIONS CHECKED		
	NO. _____		
	FILE NAME		



LEGEND

- 709.61 TOP OF SIDEWALK ELEV. U.N.O.
- [Hatched Box] SIDEWALK REMOVAL
- [Diagonal Lines Box] DRIVEWAY PAVEMENT REMOVAL
- [Cross-hatched Box] LEVEL LANDING TO BE CONSTRUCTED - 5X5' DIMENSION UNLESS OTHERWISE NOTED. SLOPE IN EACH DIRECTION IS 1.0% UNLESS OTHERWISE NOTED.
- [Grid Box] 2'-0" WIDE DETECTABLE WARNING SURFACE
- ① GUY WIRES FOR UTILITY POLE TO REMAIN. DO NOT DISTURB.
- ② LIGHT OR UTILITY POLE TO REMAIN.
- ③ SIGN TO BE RELOCATED (BY OTHERS).
- ④ WATER METER TO BE AVOIDED OR RELOCATED. COORDINATE WITH THE VILLAGE. RELOCATION BY THE VILLAGE WHERE REQUIRED.
- ⑤ SAWCUT EXISTING SIDEWALK OR PAVEMENT. NEW SIDEWALK ELEVATION TO MATCH (±1/4").



USER NAME = switt	DESIGNED - CMF	REVISED -
	DRAWN - RLK	REVISED -
PLOT SCALE = 48.0000' / in.	CHECKED - CMF	REVISED -
PLOT DATE = 2/22/2022	DATE - 12/21/2021	REVISED -

CHASTAIN & ASSOCIATES LLC
CONSULTING ENGINEERS

DECATUR, IL SCHAUMBURG, IL
ROCKFORD, IL CHAMPAIGN, IL
BENTON, IL LAFAYETTE, IN
 PADUCAH, KY

(833) 424-2782 184-001397

WARRENSBURG SRTS SIDEWALK IMPROVEMENTS
WARREN STREET PLAN AND PROFILE

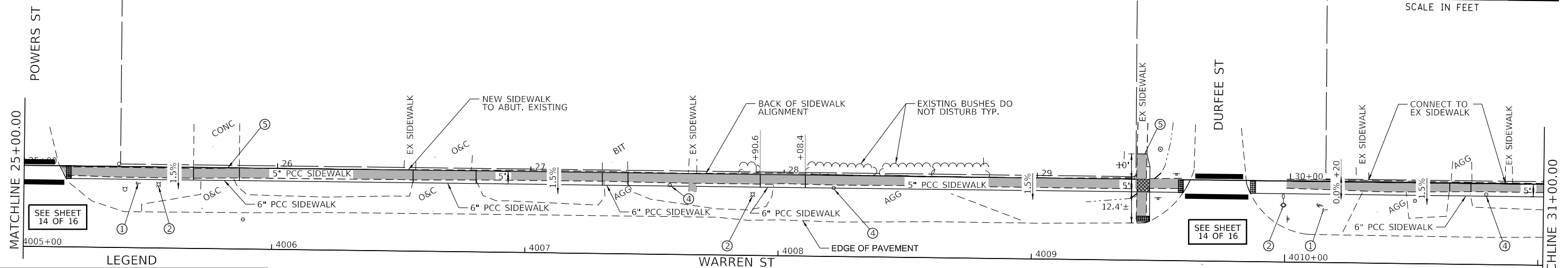
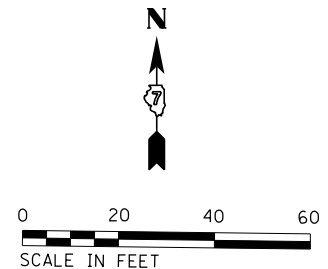
SCALE: SHEET NO. 1 OF 3 SHEETS STA. 20+00.00 TO STA. 25+00.00

F.A. RTÉ.	SECTION	COUNTY	TOTAL SHEETS	SHEET NO.
	19-00001-00-SW	MACON	16	7
CONTRACT NO. 95915			ILLINOIS FED. AID PROJECT	

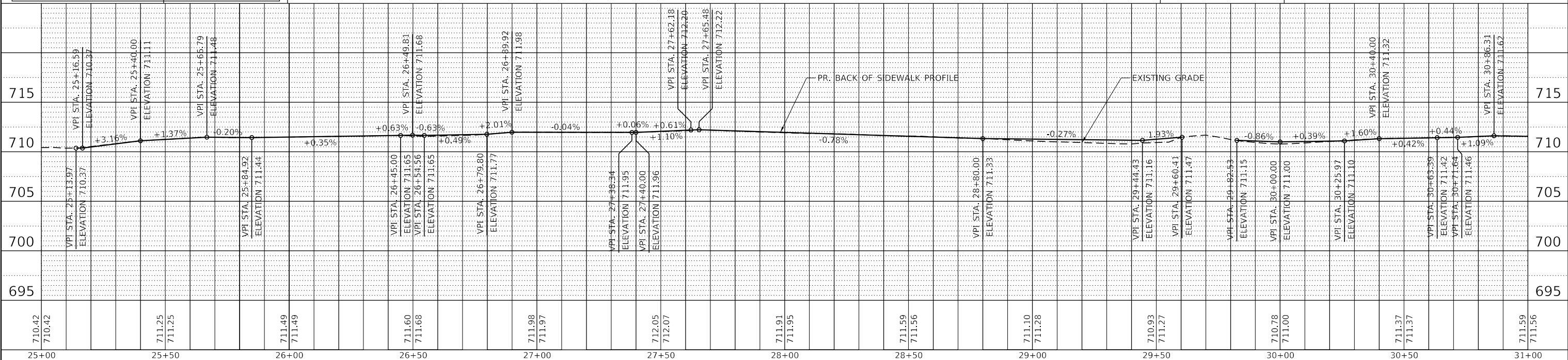
PLAN	SURVEYED	DATE
	PLOTTED	BY
	ALIGNED	
	CHECKED	
	DESIGNED	
	FILE NAME	
	NO.	

PROFILE	SURVEYED	DATE
	PLOTTED	BY
	GRADES CHECKED	
	STRUCTURE NOTATIONS OK'D	
	NO.	

I:\Municipalities\Village of Warrensburg\7301.01 SR'S W-L Grade Sch Ph 2\CADD\CADD-Civil\7301.01.Stt.XX.P&P-WARREN02.dgn



- LEGEND**
- 709.61 TOP OF SIDEWALK ELEV. U.N.O.
 - SIDEWALK REMOVAL
 - DRIVEWAY PAVEMENT REMOVAL
 - LEVEL LANDING TO BE CONSTRUCTED - 5X5' DIMENSION UNLESS OTHERWISE NOTED. SLOPE IN EACH DIRECTION IS 1.0% UNLESS OTHERWISE NOTED.
 - 2'-0" WIDE DETECTABLE WARNING SURFACE
 - ① GUY WIRES FOR UTILITY POLE TO REMAIN. DO NOT DISTURB.
 - ② LIGHT OR UTILITY POLE TO REMAIN.
 - ③ SIGN TO BE RELOCATED (BY OTHERS).
 - ④ WATER METER TO BE AVOIDED OR RELOCATED. COORDINATE WITH THE VILLAGE. RELOCATION BY THE VILLAGE WHERE REQUIRED.
 - ⑤ SAWCUT EXISTING SIDEWALK OR PAVEMENT. NEW SIDEWALK ELEVATION TO MATCH (±1/4").



USER NAME = switt	DESIGNED - CMF	REVISED -
	DRAWN - RLK	REVISED -
PLOT SCALE = 40.0000' / in.	CHECKED - CMF	REVISED -
PLOT DATE = 2/22/2022	DATE = 12/21/2021	REVISED -

CHASTAIN & ASSOCIATES LLC
CONSULTING ENGINEERS

DECATUR, IL SCHAUMBURG, IL
ROCKFORD, IL CHAMPAIGN, IL
BENTON, IL LAFAYETTE, IN
PADUCAH, KY

(833) 424-2782 184-001397

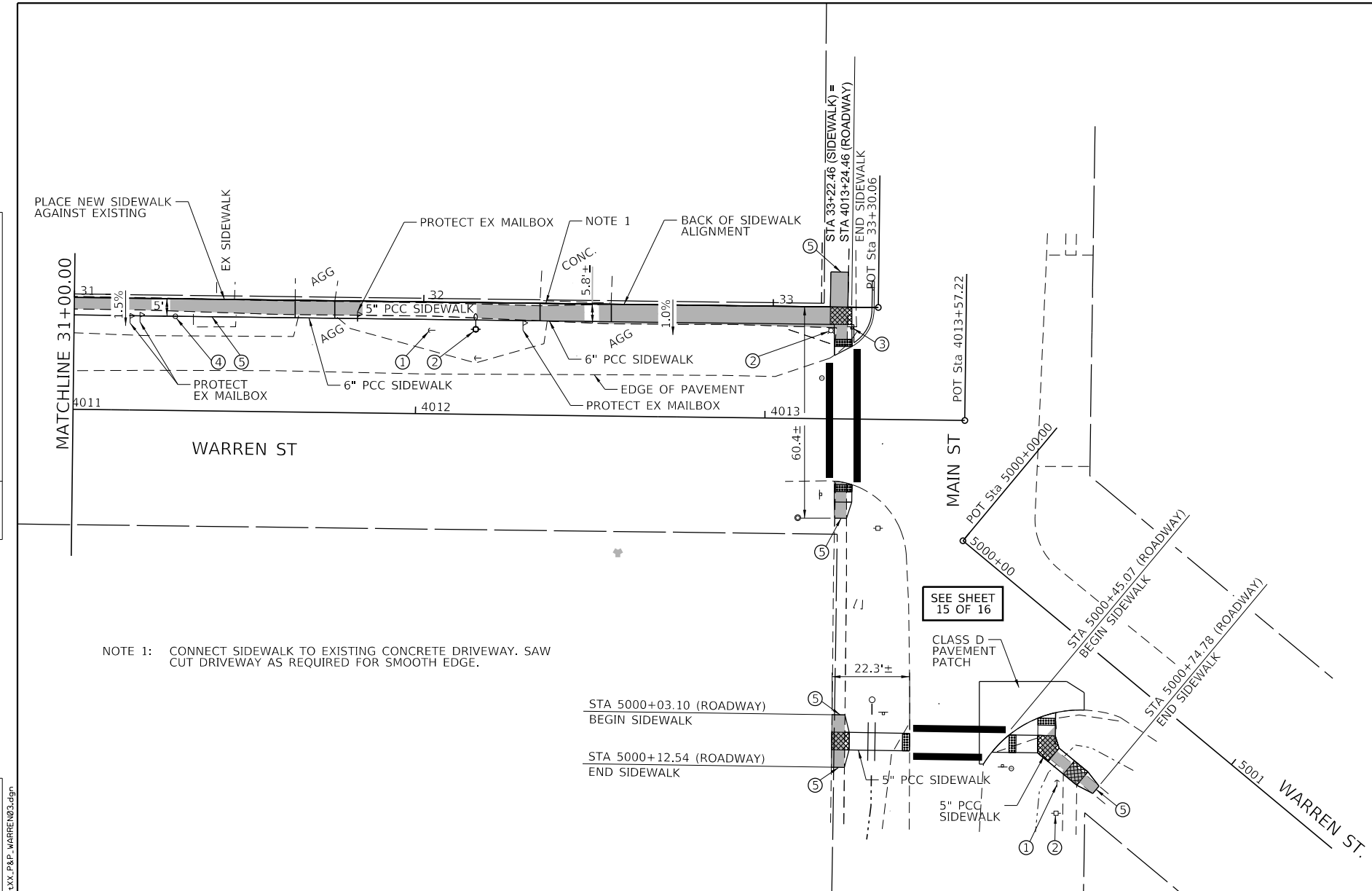
WARRENSBURG SR'S SIDEWALK IMPROVEMENTS
WARREN STREET PLAN AND PROFILE

SCALE: SHEET NO. 2 OF 3 SHEETS STA. 25+00.00 TO STA. 31+00.00

F.A. RTÉ.	SECTION	COUNTY	TOTAL SHEETS	SHEET NO.
	19-00001-00-SW	MACON	16	8
CONTRACT NO. 95915				
ILLINOIS FED. AID PROJECT				

PLAN	SURVEYED	DATE
	PLOTTED	
	ALIGNED	
	CHECKED	
	FILED	
	NO.	

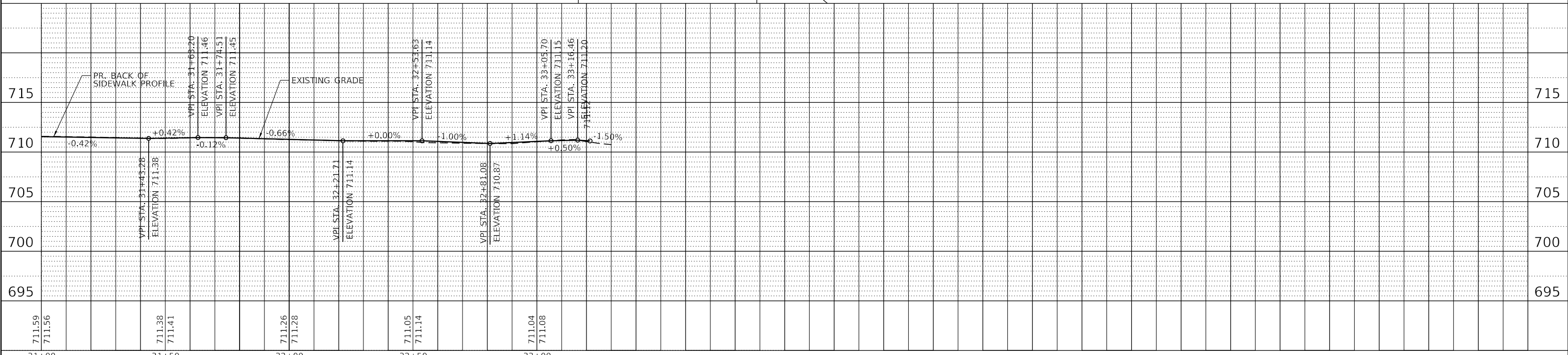
PROFILE	SURVEYED	DATE
	PLOTTED	
	GRADES CHECKED	
	STRUCTURE NOTATIONS CHECKED	
	NO.	



NOTE 1: CONNECT SIDEWALK TO EXISTING CONCRETE DRIVEWAY. SAW CUT DRIVEWAY AS REQUIRED FOR SMOOTH EDGE.

LEGEND

- 709.61 TOP OF SIDEWALK ELEV. U.N.O.
- SIDEWALK REMOVAL
- DRIVEWAY PAVEMENT REMOVAL
- LEVEL LANDING TO BE CONSTRUCTED - 5X5' DIMENSION UNLESS OTHERWISE NOTED. SLOPE IN EACH DIRECTION IS 1.0% UNLESS OTHERWISE NOTED.
- 2'-0" WIDE DETECTABLE WARNING SURFACE
- ① GUY WIRES FOR UTILITY POLE TO REMAIN. DO NOT DISTURB.
- ② LIGHT OR UTILITY POLE TO REMAIN.
- ③ SIGN TO BE RELOCATED (BY OTHERS).
- ④ WATER METER TO BE AVOIDED OR RELOCATED. COORDINATE WITH THE VILLAGE. RELOCATION BY THE VILLAGE WHERE REQUIRED.
- ⑤ SAWCUT EXISTING SIDEWALK OR PAVEMENT. NEW SIDEWALK ELEVATION TO MATCH (±1/4").



USER NAME = switt	DESIGNED - CMF	REVISED -
	DRAWN - RLK	REVISED -
PLOT SCALE = 40.0000' / in.	CHECKED - CMF	REVISED -
PLOT DATE = 2/22/2022	DATE - 12/21/2021	REVISED -

CHASTAIN & ASSOCIATES LLC
CONSULTING ENGINEERS

DECATUR, IL SCHAUMBURG, IL
ROCKFORD, IL CHAMPAIGN, IL
BENTON, IL LAFAYETTE, IN
 PADUCAH, KY

(833) 424-2782 184-001397

WARRENSBURG SRTS SIDEWALK IMPROVEMENTS
WARREN STREET PLAN AND PROFILE

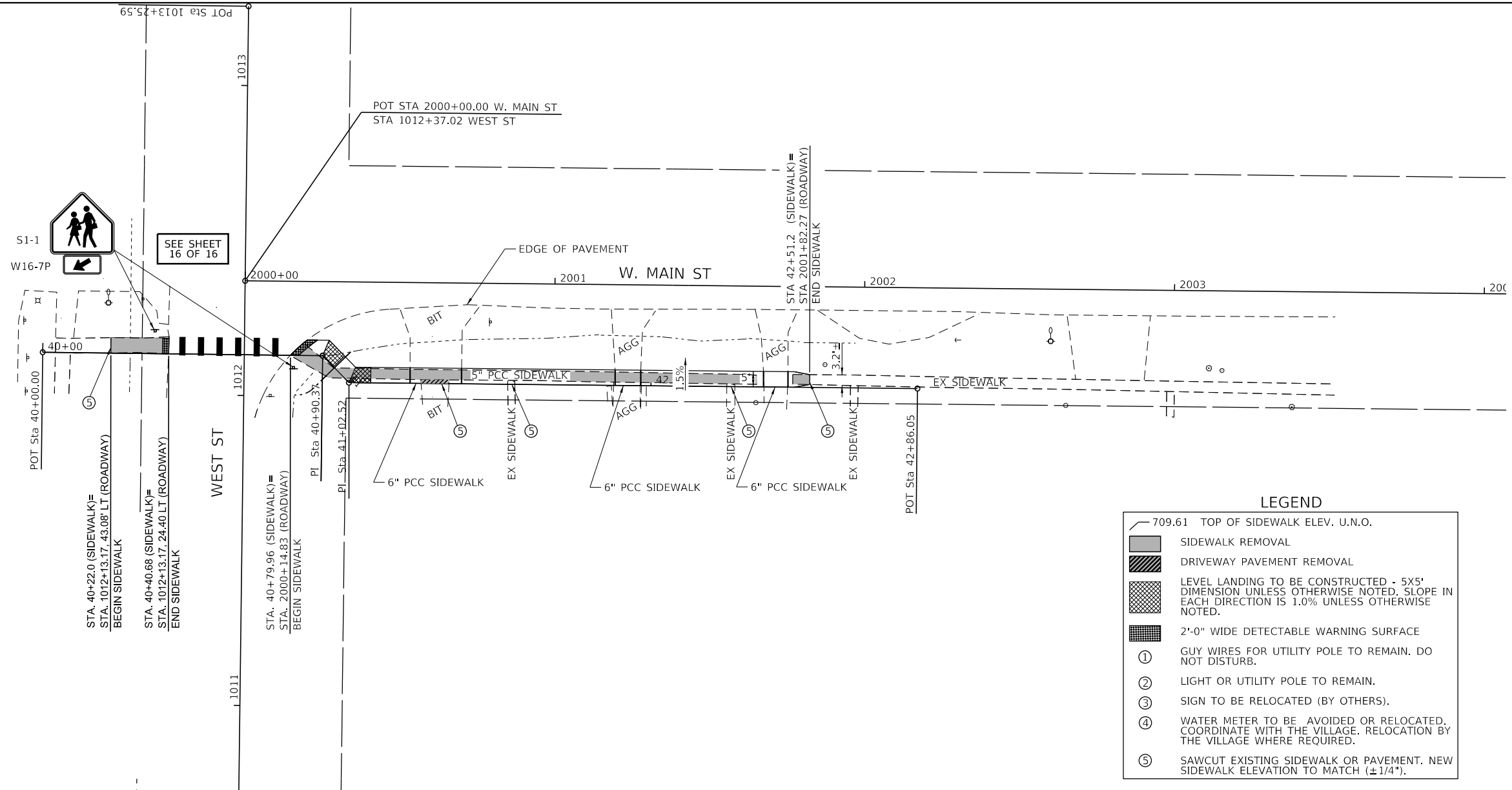
SCALE: SHEET NO. 3 OF 3 SHEETS STA. 31+00.00 TO STA. 33+30.06

F.A. RTE.	SECTION	COUNTY	TOTAL SHEETS	SHEET NO.
	19-00001-00-SW	MACON	16	9
			CONTRACT NO. 95915	
ILLINOIS FED. AID PROJECT				

PLAN	SURVEYED	BY	DATE
	PLOTTED		
	ALIGNED		
	CHECKED		
	FILED		
	NO.		
	FILE NAME		

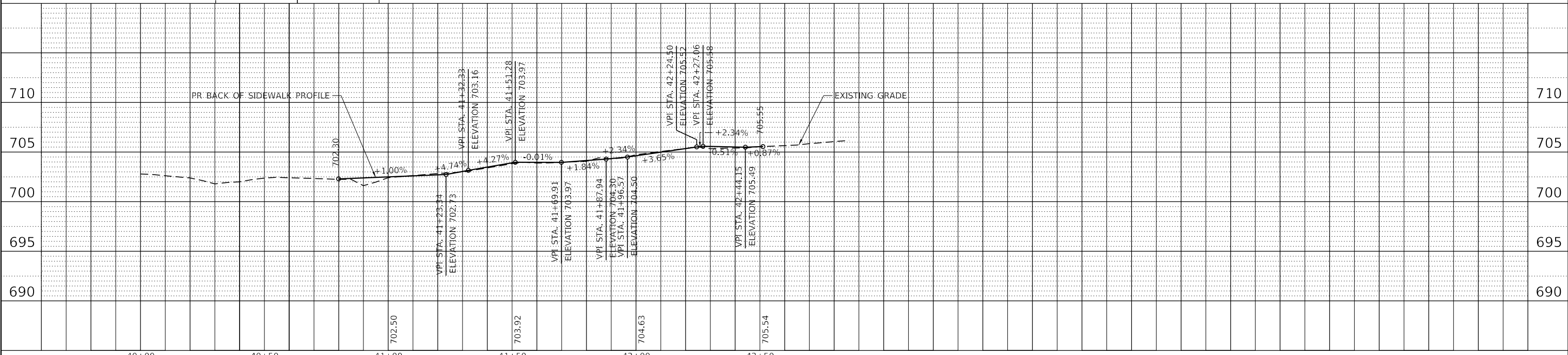
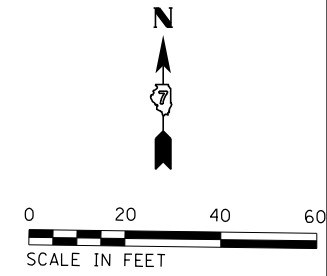
PROFILE	SURVEYED	BY	DATE
	PLOTTED		
	GRADES		
	CHECKED		
	STRUCTURE		
	NOTATIONS		
	CHPO		
	NO.		
	FILE NAME		

I:\Municipalities\Warrensburg\7301.01 SR'S W-L Grads Sch Ph 2\CADD\CADD-Civil\7301.01_Sr's_W-L_P&P_MAI\01.dgn



LEGEND

- 709.61 TOP OF SIDEWALK ELEV. U.N.O.
- [Hatched Box] SIDEWALK REMOVAL
- [Cross-hatched Box] DRIVEWAY PAVEMENT REMOVAL
- [Dotted Box] LEVEL LANDING TO BE CONSTRUCTED - 5X5' DIMENSION UNLESS OTHERWISE NOTED. SLOPE IN EACH DIRECTION IS 1.0% UNLESS OTHERWISE NOTED.
- [Grid Box] 2'-0" WIDE DETECTABLE WARNING SURFACE
- ① GUY WIRES FOR UTILITY POLE TO REMAIN. DO NOT DISTURB.
- ② LIGHT OR UTILITY POLE TO REMAIN.
- ③ SIGN TO BE RELOCATED (BY OTHERS).
- ④ WATER METER TO BE AVOIDED OR RELOCATED. COORDINATE WITH THE VILLAGE. RELOCATION BY THE VILLAGE WHERE REQUIRED.
- ⑤ SAWCUT EXISTING SIDEWALK OR PAVEMENT. NEW SIDEWALK ELEVATION TO MATCH (± 1/4").



USER NAME = switt	DESIGNED - CMF	REVISED -
	DRAWN - RLK	REVISED -
PLOT SCALE = 48.0000' / in.	CHECKED - CMF	REVISED -
PLOT DATE = 2/22/2022	DATE - 12/21/2021	REVISED -

CHASTAIN & ASSOCIATES LLC
CONSULTING ENGINEERS

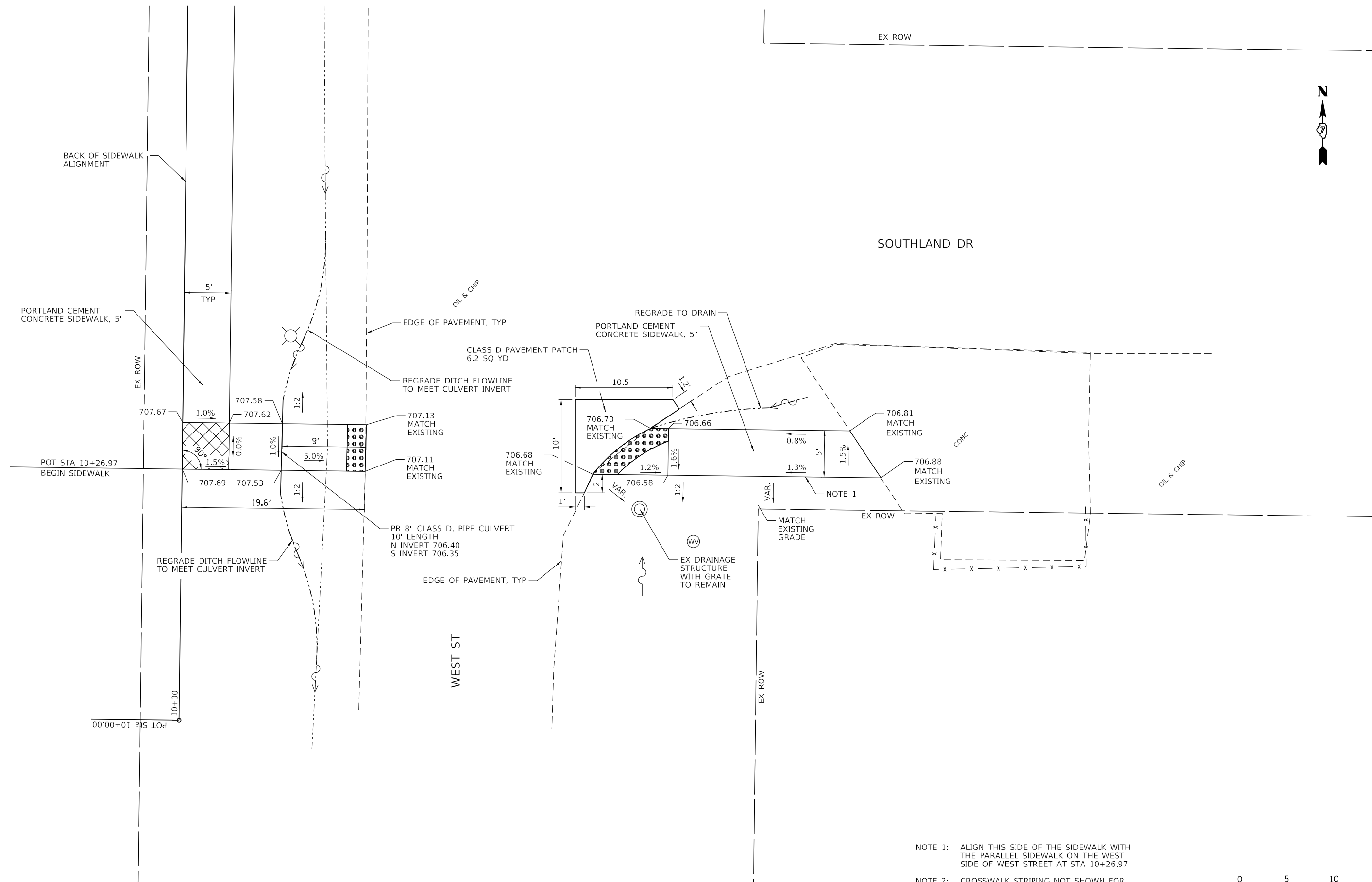
DECATUR, IL SCHAUMBURG, IL
ROCKFORD, IL CHAMPAIGN, IL
BENTON, IL LAFAYETTE, IN
 PADUCAH, KY

(833) 424-2782 184-001397

WARRENSBURG SR'S SIDEWALK IMPROVEMENTS
W. MAIN STREET PLAN AND PROFILE

SCALE: SHEET NO. 1 OF 1 SHEETS STA. 40+00.00 TO STA. 42+86.05

F.A. RTE.	SECTION	COUNTY	TOTAL SHEETS	SHEET NO.
	19-00001-00-SW	MACON	16	10
			CONTRACT NO. 95915	
ILLINOIS FED. AID PROJECT				



NOTE 1: ALIGN THIS SIDE OF THE SIDEWALK WITH THE PARALLEL SIDEWALK ON THE WEST SIDE OF WEST STREET AT STA 10+26.97

NOTE 2: CROSSWALK STRIPING NOT SHOWN FOR CLARITY. SEE PLAN & PROFILE SHEETS AND TYPICAL DETAILS.



FILE NAME = I:\Municipalities\Warrensburg\7301.01_SRTS W-L_Grade_Sch Ph 2\CADD\CADD.Gw1\7301.01_ShtXX_Ramp-Int_Detail.dgn

USER NAME = switt	DESIGNED - CMF	REVISED -
	DRAWN - RLK	REVISED -
PLOT SCALE = 10.0000' / in.	CHECKED - CMF	REVISED -
PLOT DATE = 2/22/2022	DATE - 12/21/2021	REVISED -

CHASTAIN & ASSOCIATES LLC
CONSULTING ENGINEERS

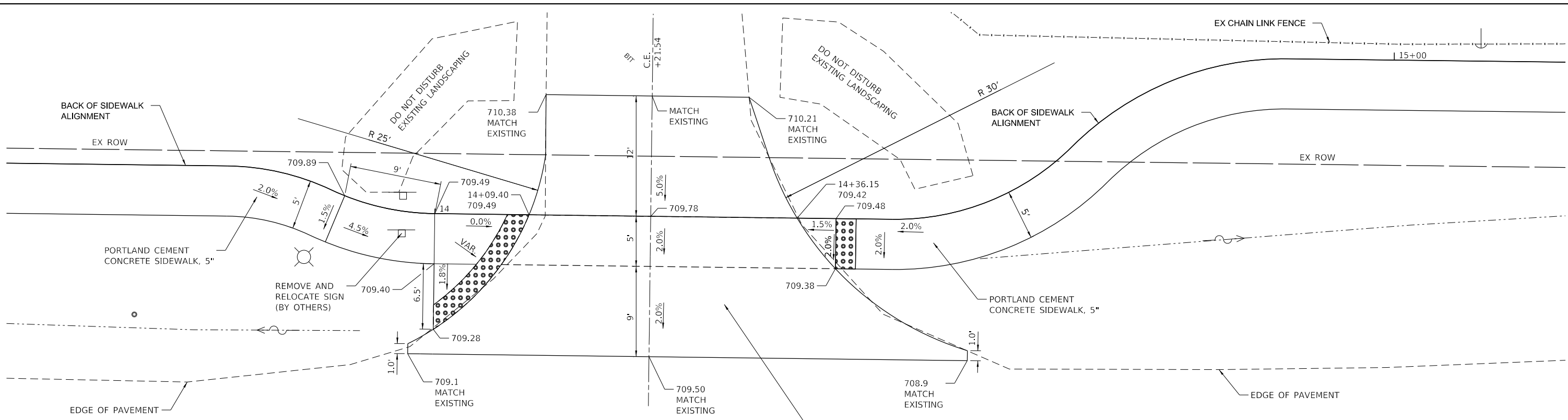
DECATUR, IL SCHAUMBURG, IL
ROCKFORD, IL CHAMPAIGN, IL
BENTON, IL LAFAYETTE, IN
 PADUCAH, KY
(833) 424-2782 184-001397

WARRENSBURG SRTS SIDEWALK IMPROVEMENTS
WEST/SOUTHLAND RAMP AND INTERSECTION DETAILS

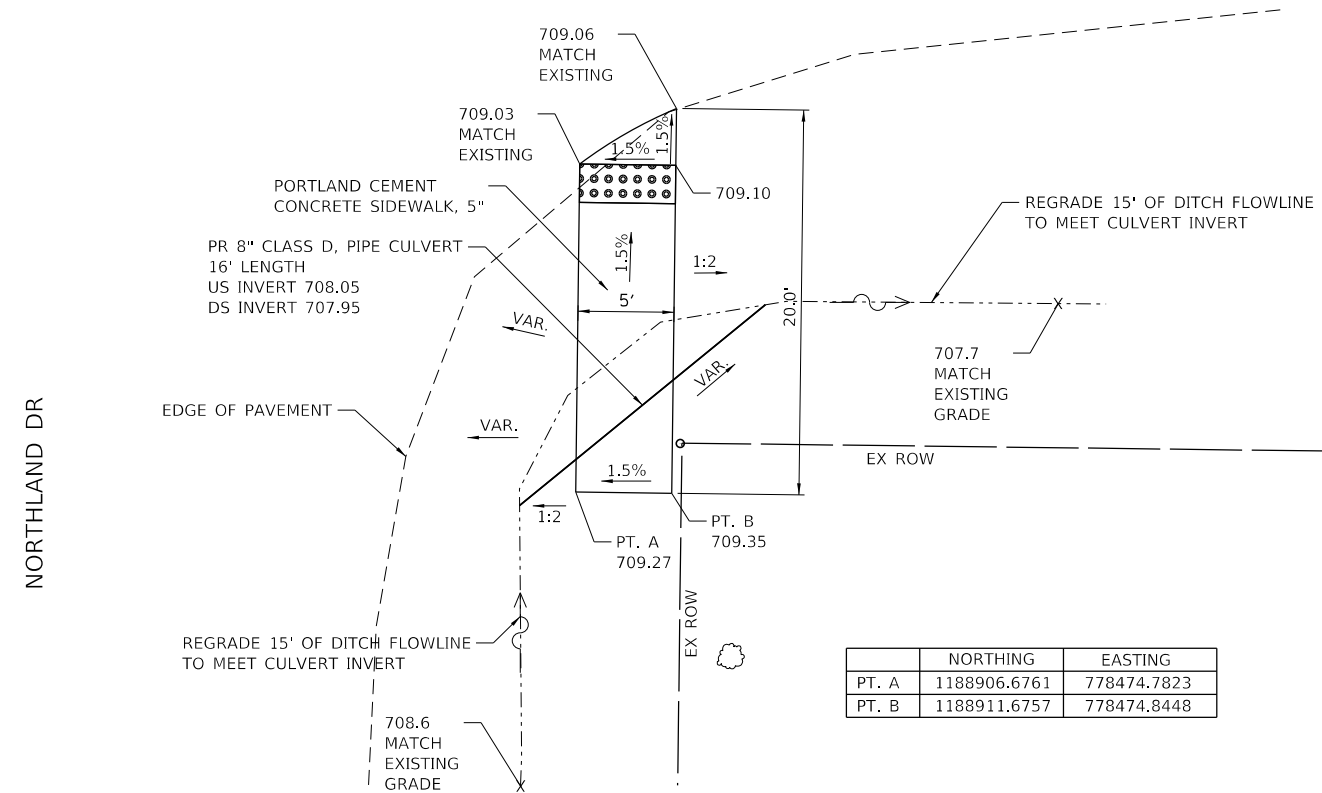
SCALE: 1" = 5' SHEET NO. 1 OF 1 SHEETS STA. N/A TO STA. N/A

F.A. RTE.	SECTION	COUNTY	TOTAL SHEETS	SHEET NO.
	19-00001-00-SW	MACON	16	11
			CONTRACT NO. 95915	
ILLINOIS FED. AID PROJECT				

FILE NAME = I:\Municipalities\Warrensburg\Warrensburg SRTS W-L Grade Sch Ph 2\ACADD\CADD\Civil\301.01_ShtXX_Ramp-Int_Detail1a07.dgn

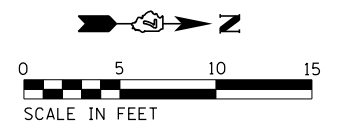


NOTE: DIMENSIONS SHOWN ARE PERPENDICULAR TO THE SIDEWALK ALIGNMENT AT THE CENTERLINE OF ENTRANCE. SAW CUT DRIVEWAY PARALLEL TO THE SIDEWALK ALIGNMENT. PAVEMENT RADII BEGIN WHERE EXISTING ENTRANCE MEETS THE R.O.W. USE STRAIGHT LINE TAPER TO MEET EXISTING ENTRANCE.



	NORTHING	EASTING
PT. A	1188906.6761	778474.7823
PT. B	1188911.6757	778474.8448

NOTE 1: CROSSWALK STRIPING NOT SHOWN FOR CLARITY. SEE PLAN & PROFILE SHEETS AND TYPICAL DETAILS.



USER NAME = switt	DESIGNED - CMF	REVISED -
	DRAWN - RLK	REVISED -
PLOT SCALE = 10.0000' / in.	CHECKED - CMF	REVISED -
PLOT DATE = 2/22/2022	DATE - 12/21/2021	REVISED -

CHASTAIN & ASSOCIATES LLC
CONSULTING ENGINEERS

DECATUR, IL SCHAUMBURG, IL
ROCKFORD, IL CHAMPAIGN, IL
BENTON, IL LAFAYETTE, IN
 PADUCAH, KY
(833) 424-2782 184-001397

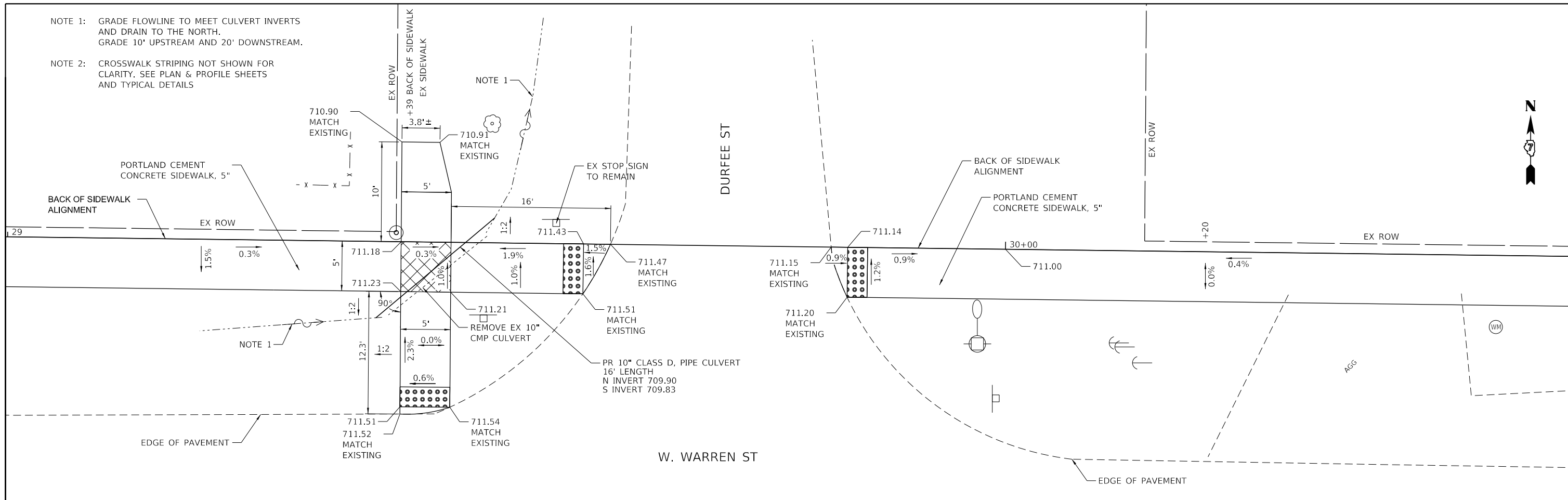
WARRENSBURG SRTS SIDEWALK IMPROVEMENTS
WEST/NORTHLAND RAMP AND INTERSECTION DETAILS

SCALE: 1" = 5' SHEET NO. 1 OF 1 SHEETS STA. N/A TO STA. N/A

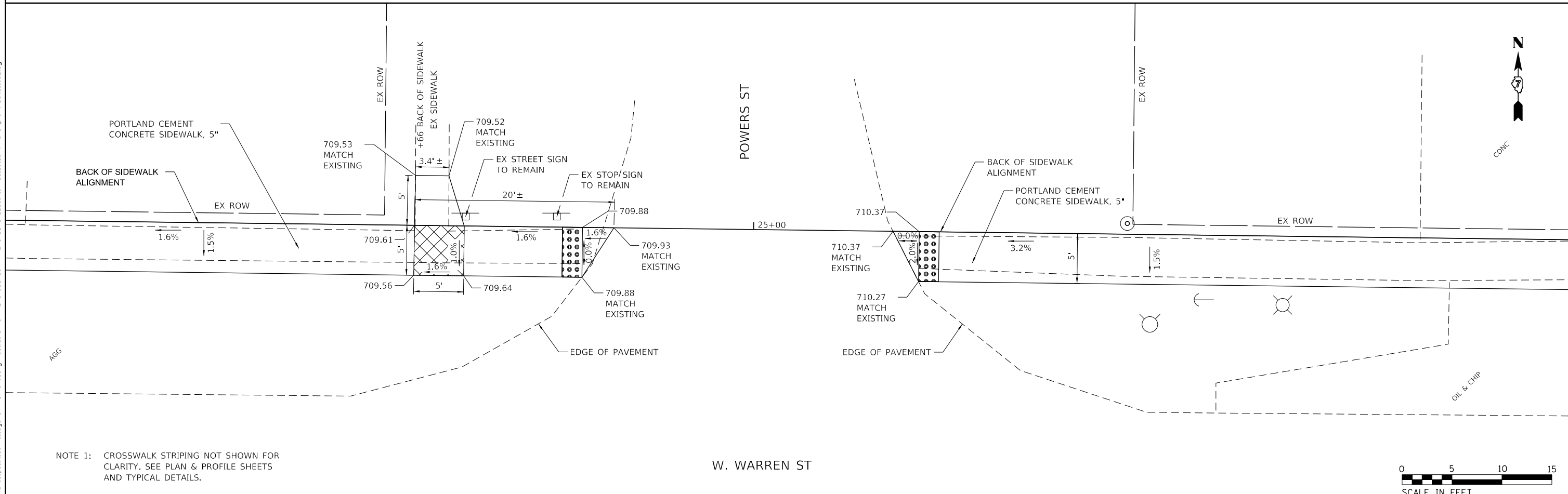
F.A. RTE.	SECTION	COUNTY	TOTAL SHEETS	SHEET NO.
	19-00001-00-SW	MACON	16	12
CONTRACT NO. 95915				
ILLINOIS FED. AID PROJECT				

NOTE 1: GRADE FLOWLINE TO MEET CULVERT INVERTS AND DRAIN TO THE NORTH. GRADE 10' UPSTREAM AND 20' DOWNSTREAM.

NOTE 2: CROSSWALK STRIPING NOT SHOWN FOR CLARITY. SEE PLAN & PROFILE SHEETS AND TYPICAL DETAILS



NOTE 1: CROSSWALK STRIPING NOT SHOWN FOR CLARITY. SEE PLAN & PROFILE SHEETS AND TYPICAL DETAILS.



FILE NAME = I:\Municipalities\Village of Warrensburg\7301.01_SRTS W-L Grade Sch Ph 2\CADD\CADD.Gw1\7301.01_ShtXX.Ramp-Int-Detail.dgn

USER NAME = switt	DESIGNED - CMF	REVISED -
	DRAWN - RLK	REVISED -
PLOT SCALE = 10.0000' / in.	CHECKED - CMF	REVISED -
PLOT DATE = 2/22/2022	DATE - 12/21/2021	REVISED -

CHASTAIN & ASSOCIATES LLC
CONSULTING ENGINEERS

DECATUR, IL SCHAUMBURG, IL
ROCKFORD, IL CHAMPAIGN, IL
BENTON, IL LAFAYETTE, IN
 PADUCAH, KY
(833) 424-2782 184-001397

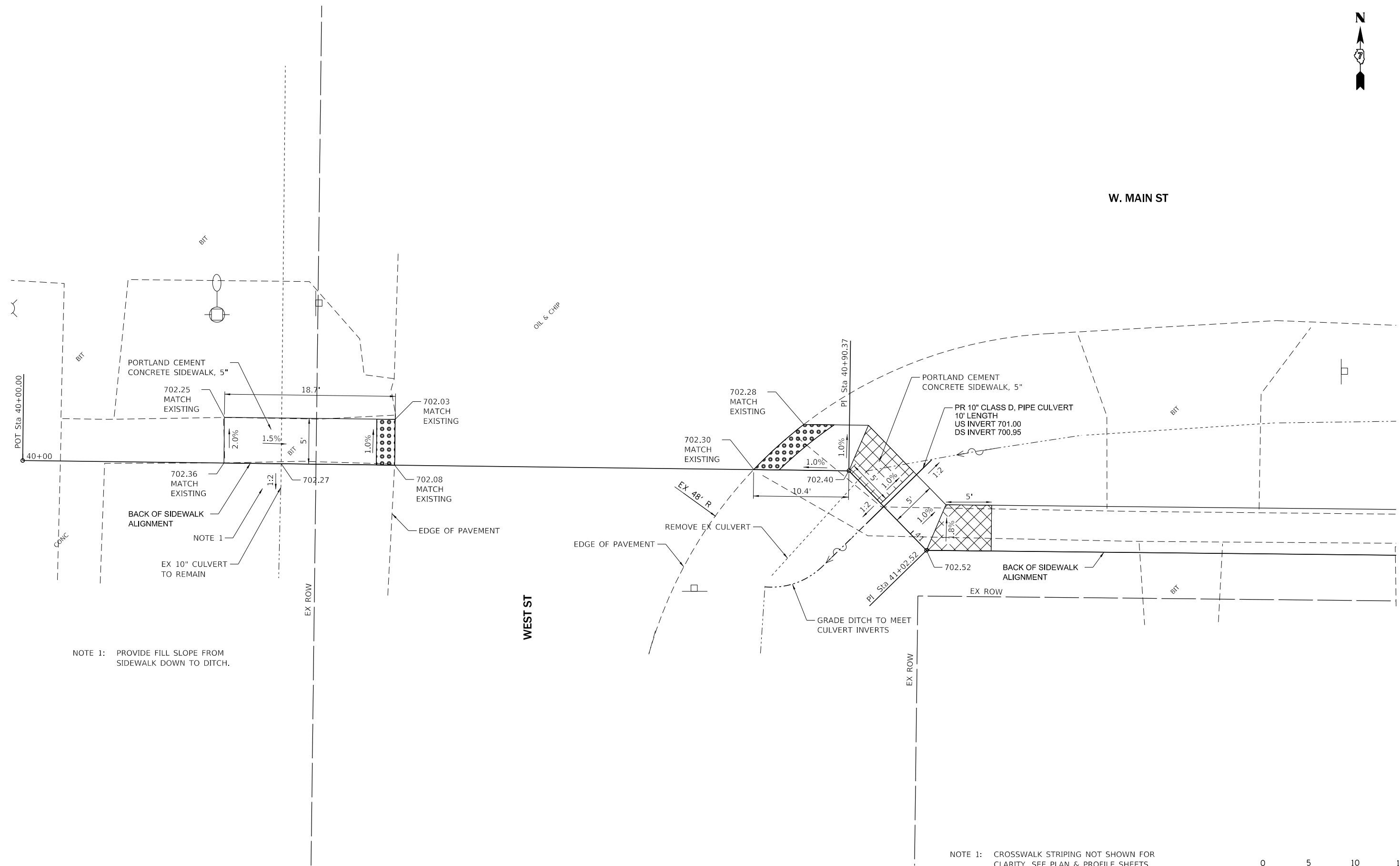
WARRENSBURG SRTS SIDEWALK IMPROVEMENTS
WARRENPOWERS RAMP AND INTERSECTION DETAILS

SCALE: 1" = 5' SHEET NO. 1 OF 1 SHEETS STA. N/A TO STA. N/A

F.A. RTE.	SECTION	COUNTY	TOTAL SHEETS	SHEET NO.
	19-0001-00-SW	MACON	16	14
CONTRACT NO. 95915				
ILLINOIS FED. AID PROJECT				



W. MAIN ST



NOTE 1: PROVIDE FILL SLOPE FROM SIDEWALK DOWN TO DITCH.

NOTE 1: CROSSWALK STRIPING NOT SHOWN FOR CLARITY. SEE PLAN & PROFILE SHEETS AND TYPICAL DETAILS.



FILE NAME = I:\Municipalities\Warrensburg\Warrensburg SRTS W-L Grade Sch Ph 2\CADD\CADD.Gw117301.01_ShtXX.Ramp-Int_Details.dgn

USER NAME = switt	DESIGNED - CMF	REVISED -
	DRAWN - RLK	REVISED -
PLOT SCALE = 10.0000' / in.	CHECKED - CMF	REVISED -
PLOT DATE = 2/22/2022	DATE - 12/21/2021	REVISED -

CHASTAIN & ASSOCIATES LLC
CONSULTING ENGINEERS

DECATUR, IL SCHAUMBURG, IL
ROCKFORD, IL CHAMPAIGN, IL
BENTON, IL LAFAYETTE, IN
 PADUCAH, KY
(833) 424-2782 184-001397

WARRENSBURG SRTS SIDEWALK IMPROVEMENTS
WEST/MAIN RAMP AND INTERSECTION DETAILS

SCALE: 1" = 5' SHEET NO. 1 OF 1 SHEETS STA. N/A TO STA. N/A

F.A. RTE.	SECTION	COUNTY	TOTAL SHEETS	SHEET NO.
	19-00001-00-SW	MACON	16	16
CONTRACT NO. 95915				
ILLINOIS FED. AID PROJECT				