

INDEX OF SHEETS

HIGHWAY STANDARDS

GENERAL NOTES

SHEET NO.	DESCRIPTION	STANDARD NO.	DESCRIPTION
1	COVER SHEET	000001-08	STANDARD SYMBOLS, ABBREVIATIONS AND PATTERNS
2-3	INDEX OF SHEETS, HIGHWAY STANDARDS, GENERAL NOTES, AND HMA MIXTURE REQUIREMENTS	280001-07	TEMPORARY EROSION CONTROL SYSTEMS
4-8	SUMMARY OF QUANTITIES	442201-03	CLASS C AND D PATCHES
9-10	GENERAL LOCATION MAPS	542301-03	PRECAST REINFORCED CONCRETE FLARED END SECTION
11-13	ALIGNMENT, TIES, AND BENCHMARKS	542306-03	PRECAST REINFORCED CONCRETE ELLIPTICAL FLARED END SECTION
	LOCATION 1: KENSINGTON RD.	602001-02	CATCH BASIN TYPE A
14	ROADWAY AND DRAINAGE PLANS	602011-02	CATCH BASIN TYPE C
15	MAINTENANCE OF TRAFFIC PLANS	602301-04	INLET - TYPE A
	LOCATION 2: IL 137	602406-11	PRECAST MANHOLE TYPE A 6' (1.83 m) DIAMETER
16	ROADWAY AND DRAINAGE PLANS	602601-06	PRECAST REINFORCED CONCRETE FLAT TOP SLAB
	LOCATION 3: I-290	602701-02	MANHOLE STEPS
17-19	ROADWAY PLAN AND PROFILE	604001-05	FRAME AND LIDS TYPE 1
20-22	DRAINAGE PLAN AND PROFILE	604036-03	GRATE TYPE 8
23	EARTHWORK SCHEDULE	604086-05	FRAME AND GRATE TYPE 23
	LOCATION 4: IL 64	604091-05	FRAME AND GRATE TYPE 24
24	ROADWAY AND DRAINAGE PLANS	606001-08	CONCRETE CURB TYPE B AND COMBINATION CONCRETE CURB AND GUTTER
	LOCATION 5: McCARTHY RD. / 123rd ST.	606301-04	PC CONCRETE ISLANDS AND MEDIANS
25	ROADWAY PLAN AND PROFILE	630001-12	STEEL PLATE BEAM GUARDRAIL
26	DRAINAGE PLAN AND PROFILE	630116	BACK SIDE PROTECTION OF GUARDRAIL
27	EARTHWORK SCHEDULE	631033-08	TRAFFIC BARRIER TERMINAL, TYPE 6B
28-32	EXISTING TRAFFIC SIGNAL PLANS FOR IL 137 AND IL 64 (FOR INFORMATION ONLY)	701001-02	OFF-RD OPERATIONS, 2L, 2W, MORE THAN 15' (4.5 m) AWAY
33	DETAIL OF STORM SEWER CONNECTION TO EXISTING SEWER (BD-7)	701006-05	OFF-RD OPERATIONS, 2L, 2W, 15' (4.5 m) TO 24" (600 mm) FROM PAVEMENT EDGE
34	PAVEMENT PATCHING FOR HMA SURFACED PAVEMENT (BD-22)	701101-05	OFF-RD OPERATIONS, MULTILANE, 15' (4.5 m) TO 24" (600 mm) FROM PAVEMENT EDGE
35	CURB OR CURB AND GUTTER REMOVAL AND REPLACEMENT (BD-24)	701106-02	OFF-RD OPERATIONS, MULTILANE, MORE THAN 15' (4.5 m) AWAY
36	BUTT JOINT AND HMA TAPER DETAILS (BD-32)	701301-04	LANE CLOSURE 2L, 2W, SHORT TIME OPERATIONS
37	ENTRANCE AND EXIT RAMP CLOSURE DETAILS (TC-08)	701306-04	LANE CLOSURE 2L, 2W, SLOW MOVING OPERATIONS DAY ONLY, FOR SPEEDS >= 45 MPH
38	TRAFFIC CONTROL AND PROTECTION FOR SIDE ROADS, INTERSECTIONS, AND DRIVEWAYS (TC-10)	701311-03	LANE CLOSURE 2L, 2W, MOVING OPERATIONS DAY ONLY
39	TYPICAL APPLICATIONS - RAISED REFLECTIVE PAVEMENT MARKERS (SNOW-PLOW RESISTANT) (TC-11)	701336-07	LANE CLOSURE 2L, 2W, WORK IN SERIES, FOR SPEEDS >= 45 MPH
40-41	MULTI-LANE FREEWAY PAVEMENT MARKING DETAILS (TC-12)	701400-11	APPROACH TO LANE CLOSURE, FREEWAY/EXPRESSWAY
42	DISTRICT ONE TYPICAL PAVEMENT MARKINGS (TC-13)	701401-13	LANE CLOSURE, FREEWAY/EXPRESSWAY
43	TRAFFIC CONTROL AND PROTECTION AT TURN BAYS (TO REMAIN OPEN TO TRAFFIC) (TC-14)	701411-09	LANE CLOSURE, MULTILANE, AT ENTRANCE OR EXIT RAMP, FOR SPEEDS >= 45 MPH
44	TRAFFIC CONTROL DETAILS FOR FREEWAY SHOULDER CLOSURES AND PARTIAL RAMP CLOSURES (TC-17)	701427-05	LANE CLOSURE, MULTILANE, INTERMITTENT OR MOVING OPER., FOR SPEEDS <= 40 MPH
45	FREEWAYS/EXPRESSWAYS SIGNING FOR FLAGGING OPERATIONS AT WORK ZONE OPENINGS ON FREEWAYS/EXPRESSWAYS (TC-18)	701428-01	TRAFFIC CONTROL SETUP AND REMOVAL FREEWAY/EXPRESSWAY
46	ARTERIAL ROAD INFORMATION SIGN (TC-22)	701446-11	TWO LANE CLOSURE, FREEWAY/EXPRESSWAY
47	DISTRICT ONE STANDARD TRAFFIC SIGNAL DESIGN DETAILS (TS-05, SHEET 2 OF 7)	701601-09	URBAN LANE CLOSURE, MULTILANE, 1W OR 2W WITH NONTRAVERSABLE MEDIAN
48	DISTRICT ONE - DETECTOR LOOP INSTALLATION DETAILS FOR ROADWAY RESURFACING (TS-07)	701602-10	URBAN LANE CLOSURE, MULTILANE, 2W WITH BIDIRECTIONAL LEFT TURN LANE
49-54	CROSS SECTIONS FOR I-290 AND McCARTHY ROAD	701606-10	URBAN LANE CLOSURE, MULTILANE, 2W WITH MOUNTABLE MEDIAN
		701611-01	URBAN HALF ROAD CLOSURE, MULTILANE, 2W WITH MOUNTABLE MEDIAN
		701701-10	URBAN LANE CLOSURE, MULTILANE INTERSECTION
		701801-06	SIDEWALK, CORNER OR CROSSWALK CLOSURE
		701901-08	TRAFFIC CONTROL DEVICES
		704001-08	TEMPORARY CONCRETE BARRIER
		725001-01	OBJECT AND TERMINAL MARKERS
		780001-05	TYPICAL PAVEMENT MARKINGS
		782006-01	GUARDRAIL AND BARRIER WALL REFLECTOR MOUNTING DETAILS
		886001-01	DETECTOR LOOP INSTALLATIONS

- BEFORE STARTING ANY EXCAVATION, THE CONTRACTOR SHALL CALL "JULIE" AT (800) 892-0123 OR 811 FOR FIELD LOCATIONS OF BURIED ELECTRIC, TELEPHONE, AND GAS FACILITIES (48 HOUR NOTIFICATION REQUIRED). THE CONTRACTOR SHALL ALSO CALL E.M.C. (DISTRICT 1 ELECTRICAL MAINTENANCE CONTRACTOR) AT (708) 524-2145 FOR FIELD LOCATIONS OF DISTRICT 1 ELECTRICAL CABLES.
- THE CONTRACTOR SHALL COORDINATE CONSTRUCTION ACTIVITIES WITH UTILITY COMPANIES, THE CITIES OF ELMHURST AND WAUKEGAN AND THE VILLAGES OF GLENDALE HEIGHTS, LEMONT, AND MOUNT PROSPECT.
- THE CONTRACTOR WILL NOT BE ALLOWED TO SET UP A YARD OR FIELD OFFICE ON STATE PROPERTY WITHOUT THE WRITTEN PERMISSION OF THE DEPARTMENT.
- BEFORE BEGINNING ANY WORK, THE CONTRACTOR SHALL RETAIN AND RECORD FOR FUTURE REFERENCE, ALL EXISTING PAVEMENT MARKING LINES IN ORDER THAT THESE LOCATIONS CAN BE RE-ESTABLISHED FOR STRIPING. EXACT LOCATIONS OF ALL PAVEMENT MARKINGS SHALL BE AS SHOWN ON THE PLANS OR AS DIRECTED BY THE ENGINEER.
- IT SHALL BE THE CONTRACTOR'S RESPONSIBILITY TO VERIFY ALL DIMENSIONS AND CONDITIONS EXISTING IN THE FIELD PRIOR TO CONSTRUCTION AND ORDERING OF MATERIALS.
- ALL DAMAGE TO EXISTING PAVEMENT MARKINGS OR RAISED REFLECTIVE PAVEMENT MARKERS OUTSIDE THE REMOVAL LINE SHOWN ON THE PLANS SHALL BE REPLACED AT THE CONTRACTOR'S EXPENSE.
- ALL PAVEMENT PATCHING, CURB AND GUTTER REMOVAL AND REPLACEMENT, SELECTIVE CLEARING, SEEDING, PERIMETER EROSION BARRIER, DRAINAGE STRUCTURE CLEANING/ADJUSTMENT/RECONSTRUCTION, TELEVISIONING OF STORM SEWER, AND BOX CULVERT TO BE CLEANED LOCATIONS WILL BE DETERMINED IN THE FIELD BY THE ENGINEER.
- THE CONTRACTOR SHALL BE REQUIRED TO PROVIDE ACCESS TO ABUTTING PROPERTY AT ALL TIMES DURING THE CONSTRUCTION OF THIS PROJECT.
- DO NOT SCALE PLANS FOR CONSTRUCTION DIMENSIONS.
- TEN (10) FOOT TRANSITIONS SHALL BE USED TO MATCH PROPOSED CURB AND GUTTER AND MEDIAN ITEMS OF WORK TO EXISTING CURBS AND GUTTER AND MEDIANS IN THE FIELD, UNLESS OTHERWISE SHOWN. THE TRANSITIONS SHALL BE PAID FOR AT THE CONTRACT UNIT PRICE FOR THE PROPOSED ITEMS OF WORK SPECIFIED.
- THE CONTRACTOR SHALL CONTACT THE DISTRICT ONE TRAFFIC CONTROL SUPERVISOR AT KALPANA.KANNAN-HOSADURGA@ILLINOIS.GOV A MINIMUM OF 72 HOURS IN ADVANCE OF BEGINNING WORK ON ARTERIALS.
- THE ENGINEER SHALL CONTACT THE AREA TRAFFIC FIELD ENGINEER, EMAD ALHUSSEINI, AT EMAD.ALHUSSEINI@ILLINOIS.GOV A MINIMUM OF TWO (2) WEEKS PRIOR TO THE PLACEMENT OF PERMANENT PAVEMENT MARKINGS.
- THE CONTRACTOR SHALL CONTACT THE DISTRICT ONE TRAFFIC CONTROL SUPERVISOR AT (847) 705-4155 A MINIMUM OF 72 HOURS IN ADVANCE OF BEGINNING WORK ON EXPRESSWAYS.
- THE ENGINEER SHALL CONTACT THE EXPRESSWAY FIELD ENGINEER AT (847) 705-4153 A MINIMUM OF 72 HOURS PRIOR TO PLACEMENT OF PERMANENT PAVEMENT MARKINGS.
- DOUBLE LANE MARKERS ARE TO BE USED AS SHOWN ON THE DISTRICT ONE DETAIL "TYPICAL APPLICATIONS - RAISED REFLECTIVE PAVEMENT MARKERS (SNOW-PLOW RESISTANT)" SHOWN IN THE PLANS.
- THE "ARTERIAL ROAD INFORMATION SIGN (TC-22)" DISTRICT DETAIL IS APPLICABLE ONLY TO ARTERIAL ROADS AND SHALL NOT BE APPLIED TO EXPRESSWAYS/TOLLWAYS.
- ALL MILLED SURFACES SHALL BE AT UNIFORM CROSS SLOPE PER LANE AND FREE OF RIDGES BETWEEN PASSES. ANY DEVIATIONS SHALL BE CORRECTED AT NO COST TO THE DEPARTMENT.
- THE REMOVAL OF GUARDRAIL TERMINAL SECTIONS SHALL BE INCLUDED IN THE UNIT PRICE PER FOOT FOR "GUARDRAIL REMOVAL".
- FOR STORM SEWER CONSTRUCTED UNDER THE ROADWAY, BACKFILLING METHODS TWO AND THREE AUTHORIZED UNDER THE PROVISIONS OF ARTICLE 550.07 OF THE STANDARD SPECIFICATIONS WILL NOT BE ALLOWED.
- TOP OF GRATE OR RIM ELEVATIONS GIVEN ON THE PLANS ARE ONLY TO ASSIST THE CONTRACTOR IN DETERMINING THE APPROXIMATE OVERALL HEIGHT OF EACH STRUCTURE. FRAMES/GRATES/LIDS ON ALL NEW STRUCTURES SHALL BE ADJUSTED TO THE FINAL ELEVATIONS OF THE AREAS IN WHICH THEY ARE LOCATED, AS PART OF THE STRUCTURE COST. TOP OF GRATE OR RIM ELEVATIONS SHOWN ON THE PLANS FOR STRUCTURES LOCATED IN THE CURB LINE ARE GIVEN AT THE EDGE OF PAVEMENT. PROPOSED SEWER LENGTHS PROVIDED IN THE QUANTITIES ARE FROM THE CENTER OF THE STRUCTURES.
- UNLESS OTHER CONDITIONS WARRANT EXTENDED LANE CLOSURE AS DETERMINED AND APPROVED IN WRITING BY THE ENGINEER OR AS PROVIDED FOR IN THE CONTRACT SPECIFICATIONS, OVERNIGHT CLOSURES SHALL NOT BE ALLOWED FOR REHABILITATION PROJECTS INVOLVING DAYTIME MILLING AND RESURFACING OPERATIONS AND CLASS D PATCHING.

* COOK, DUPAGE, & LAKE

MODEL: Default
FILE: \\nas01c-pw-bentley.com\FWIDOT\Documents\DOT Office\Bentley - I:\projects\104021\104021\CD\000001\Drawings\104021-1-arh-ge-mex-dgn

USER NAME = tariqfm	DESIGNED -	REVISED - FT, 3/15/2022
	DRAWN -	REVISED -
PLOT SCALE = 100,0000 ' / in.	CHECKED -	REVISED -
PLOT DATE = 3/15/2022	DATE -	REVISED -

**STATE OF ILLINOIS
DEPARTMENT OF TRANSPORTATION**

INDEX OF SHEETS, HWY STDS, GEN. NOTES, AND HMA MIX REQS			
VARIOUS ROUTES - VARIOUS LOCATIONS			
SCALE:	SHEET	OF	SHEETS
	STA.	TO	STA.

F.A. RTE.	SECTION	COUNTY	TOTAL SHEETS	SHEET NO.
VAR.	2020-238-T	*	54	2
CONTRACT NO. 62N07				
ILLINOIS		FED. AID PROJECT		

SUMMARY OF QUANTITIES			TOTAL QUANTITIES	CONSTRUCTION TYPE CODE							
CODE NO	ITEM	UNIT		100% STATE	100% STATE	100% STATE	100% STATE	100% STATE	100% STATE		
				0004 KENSINGTON RD. COOK CO. (LOC. #1)	0021 KENSINGTON RD. COOK CO. (LOC. #1)	0004 IL 137 LAKE CO. (LOC. #2)	0004 IL-290 DUPAGE CO. (LOC. #3)	0004 IL 64 (NORTH AVE.) DUPAGE CO. (LOC. #4)	0004 McCARTHY RD. COOK CO. (LOC. #5)		
20100110	TREE REMOVAL (6 TO 15 UNITS DIAMETER)	UNIT	220				213	7			
20100210	TREE REMOVAL (OVER 15 UNITS DIAMETER)	UNIT	18				18				
20101000	TEMPORARY FENCE	FOOT	232					62	170		
20101200	TREE ROOT PRUNING	EACH	11					4	7		
20101700	SUPPLEMENTAL WATERING	UNIT	2					1	1		
20200100	EARTH EXCAVATION	CU YD	427				419	8			
20201200	REMOVAL AND DISPOSAL OF UNSUITABLE MATERIAL	CU YD	21	18			0	3			
20400800	FURNISHED EXCAVATION	CU YD	111				28	83			
20800150	TRENCH BACKFILL	CU YD	92	14		4.3	64.5	5	4.2		
21101505	TOPSOIL EXCAVATION AND PLACEMENT	CU YD	624				480	144			
21101615	TOPSOIL FURNISH AND PLACE, 4"	SO YD	3488				2904	584			
21400100	GRADING AND SHAPING DITCHES	FOOT	217					217			
25000210	SEEDING, CLASS 2A	ACRE	0.89				0.6	0.12	0.17		
25000400	NITROGEN FERTILIZER NUTRIENT	POUND	81				54	11	16		
25000500	PHOSPHORUS FERTILIZER NUTRIENT	POUND	81				54	11	16		
			* SPECIALTY ITEM								

SUMMARY OF QUANTITIES			TOTAL QUANTITIES	CONSTRUCTION TYPE CODE							
CODE NO	ITEM	UNIT		100% STATE	100% STATE	100% STATE	100% STATE	100% STATE	100% STATE		
				0004 KENSINGTON RD. COOK CO. (LOC. #1)	0021 KENSINGTON RD. COOK CO. (LOC. #1)	0004 IL 137 LAKE CO. (LOC. #2)	0004 IL-290 DUPAGE CO. (LOC. #3)	0004 IL 64 (NORTH AVE.) DUPAGE CO. (LOC. #4)	0004 McCARTHY RD. COOK CO. (LOC. #5)		
25000600	POTASSIUM FERTILIZER NUTRIENT	POUND	81				54	11	16		
25100630	EROSION CONTROL BLANKET	SO YD	4313				2904	584	825		
28000250	TEMPORARY EROSION CONTROL SEEDING	POUND	89				60	12	17		
28000305	TEMPORARY DITCH CHECKS	FOOT	360				260		100		
28000400	PERIMETER EROSION BARRIER	FOOT	969					389	580		
28000510	INLET FILTERS	EACH	3				2		1		
28100105	STONE RIPRAP, CLASS A3	SO YD	13					1	12		
31101400	SUBBASE GRANULAR MATERIAL, TYPE B 6"	SO YD	17						17		
40600290	BITUMINOUS MATERIALS (TACK COAT)	POUND	62				62				
40600982	HOT-MIX ASPHALT SURFACE REMOVAL - BUTT JOINT	SO YD	3				3				
40604062	HOT-MIX ASPHALT SURFACE COURSE, IL-9.5, MIX "D", N70	TON	16				16				
42001300	PROTECTIVE COAT	SO YD	25			8		17			
42400200	PORTLAND CEMENT CONCRETE SIDEWALK 5 INCH	SO FT	50			50					
44000157	HOT-MIX ASPHALT SURFACE REMOVAL, 2"	SO YD	137				137				
44000600	SIDEWALK REMOVAL	SO FT	50			50					
			* SPECIALTY ITEM								

SUMMARY OF QUANTITIES			TOTAL QUANTITIES	CONSTRUCTION TYPE CODE					
CODE NO	ITEM	UNIT		100% STATE	100% STATE	100% STATE	100% STATE	100% STATE	100% STATE
				0004 KENSINGTON RD. COOK CO. (LOC. #1)	0021 KENSINGTON RD. COOK CO. (LOC. #1)	0004 IL 137 LAKE CO. (LOC. #2)	0004 IL-290 DUPAGE CO. (LOC. #3)	0004 IL 64 (NORTH AVE.) DUPAGE CO. (LOC. #4)	0004 McCARTHY RD. COOK CO. (LOC. #5)
44003100	MEDIAN REMOVAL	SO FT	62					62	
44004250	PAVED SHOULDER REMOVAL	SO YD	167				167		
48102100	AGGREGATE WEDGE SHOULDER, TYPE B	TON	13.3						13.3
48203045	HOT-MIX ASPHALT SHOULDERS, 12"	SO YD	167				167		
54213657	PRECAST REINFORCED CONCRETE FLARED END SECTIONS 12"	EACH	1					1	
54214713	PRECAST REINFORCED CONCRETE FLARED END SECTIONS - ELLIPTICAL, EQUIVALENT ROUND-SIZE 18"	EACH	2						2
542A5473	PIPE CULVERTS, CLASS A, TYPE 1 EQUIVALENT ROUND-SIZE 18"	FOOT	40						40
550A0050	STORM SEWERS, CLASS A, TYPE 1 12"	FOOT	68.4					68.4	
550A0340	STORM SEWERS, CLASS A, TYPE 2 12"	FOOT	402.6			20.7	381.9		
550A0660	STORM SEWERS, CLASS A, TYPE 3 15"	FOOT	8	8					
550A0680	STORM SEWERS, CLASS A, TYPE 3 18"	FOOT	8	8					
55100400	STORM SEWER REMOVAL 10"	FOOT	10			10			
55100500	STORM SEWER REMOVAL 12"	FOOT	10			10			
55100700	STORM SEWER REMOVAL 15"	FOOT	8	8					
55100900	STORM SEWER REMOVAL 18"	FOOT	8	8					
55101600	STORM SEWER REMOVAL 36"	FOOT	5	5					
			* SPECIALTY ITEM						

SUMMARY OF QUANTITIES			TOTAL QUANTITIES	CONSTRUCTION TYPE CODE					
CODE NO	ITEM	UNIT		100% STATE	100% STATE	100% STATE	100% STATE	100% STATE	100% STATE
				0004 KENSINGTON RD. COOK CO. (LOC. #1)	0021 KENSINGTON RD. COOK CO. (LOC. #1)	0004 IL 137 LAKE CO. (LOC. #2)	0004 IL-290 DUPAGE CO. (LOC. #3)	0004 IL 64 (NORTH AVE.) DUPAGE CO. (LOC. #4)	0004 McCARTHY RD. COOK CO. (LOC. #5)
60200105	CATCH BASINS, TYPE A, 4'-DIAMETER, TYPE 1 FRAME, OPEN LID	EACH	1				1		
60200805	CATCH BASINS, TYPE A, 4'-DIAMETER, TYPE 8 GRATE	EACH	3				3		
60201340	CATCH BASINS, TYPE A, 4'-DIAMETER, TYPE 24 FRAME AND GRATE	EACH	1						1
60208230	CATCH BASINS, TYPE C, TYPE 23 FRAME AND GRATE	EACH	1			1			
60223800	MANHOLES, TYPE A, 6'-DIAMETER, TYPE 1 FRAME, CLOSED LID	EACH	1	1					
60237470	INLETS, TYPE A, TYPE 24 FRAME AND GRATE	EACH	1						1
60251740	CATCH BASINS TO BE ADJUSTED WITH NEW TYPE 24 FRAME AND GRATE	EACH	1				1		
60252800	CATCH BASINS TO BE RECONSTRUCTED	EACH	1				1		
60255500	MANHOLES TO BE ADJUSTED	EACH	2				1		1
60500050	REMOVING CATCH BASINS	EACH	1			1			
60620000	CONCRETE MEDIAN, TYPE SB-6.24	SO FT	62						62
60905305	BOX CULVERTS TO BE CLEANED	FOOT	881				881		
60920015	PIPE CULVERTS TO BE CLEANED 15"	FOOT	42						42

FILE NAME =	USER NAME = r1r1qfm	DESIGNED -	REVISED -
pw:\N\dot-pw\benley.com\PW\DOT\Documents\1\DOT - Office\District\Projects\DI0402\NCAD\Design\DI04021-shr-502\DRAWN		REVISOR -	REVISOR -
PLOT SCALE = 100,0000' / 1in	CHECKED -	REVISOR -	REVISOR -
PLOT DATE = 2/10/2022	DATE -	REVISOR -	REVISOR -

**STATE OF ILLINOIS
DEPARTMENT OF TRANSPORTATION**

SUMMARY OF QUANTITIES VARIOUS ROUTES - VARIOUS LOCATIONS			
SCALE:	SHEET NO.	OF SHEETS	STA. TO STA.

F.A. RTE.	SECTION	COUNTY	TOTAL SHEETS	SHEET NO.
VAR.	2020-238-T	*	54	5
			CONTRACT NO. 62N07	
FED. ROAD DIST. NO. 1 ILLINOIS FED. AID PROJECT				

REVISOR SHEET 4/13/2022
* COOK, DUPAGE, & LAKE

SUMMARY OF QUANTITIES			TOTAL QUANTITIES	CONSTRUCTION TYPE CODE					
CODE NO	ITEM	UNIT		100% STATE	100% STATE	100% STATE	100% STATE	100% STATE	100% STATE
				0004 KENSINGTON RD. COOK CO. (LOC. #1)	0021 KENSINGTON RD. COOK CO. (LOC. #1)	0004 IL 137 LAKE CO. (LOC. #2)	0004 IL-290 DUPAGE CO. (LOC. #3)	0004 IL 64 (NORTH AVE.) DUPAGE CO. (LOC. #4)	0004 McCARTHY RD. COOK CO. (LOC. #5)
* 63000001	STEEL PLATE BEAM GUARDRAIL, TYPE A, 6 FOOT POSTS	FOOT	75				75		
* 63100089	TRAFFIC BARRIER TERMINAL, TYPE 6B	EACH	1				1		
* 63100167	TRAFFIC BARRIER TERMINAL, TYPE 1 (SPECIAL) TANGENT	EACH	1				1		
63200310	GUARDRAIL REMOVAL	FOOT	163				163		
* 66900200	NON-SPECIAL WASTE DISPOSAL	CU YD	1308	0	7	1158	79	64	
* 66900530	SOIL DISPOSAL ANALYSIS	EACH	4	0	1	1	1	1	
* 66901001	REGULATED SUBSTANCES PRE-CONSTRUCTION PLAN	L SUM	1	0	0.25	0.25	0.25	0.25	
* 66901003	REGULATED SUBSTANCES FINAL CONSTRUCTION REPORT	L SUM	1	0	0.25	0.25	0.25	0.25	
* 66901006	REGULATED SUBSTANCES MONITORING	CAL DA	8	0	1	5	1	1	
67100100	MOBILIZATION	L SUM	1	0.2	0.2	0.2	0.2	0.2	
70100460	TRAFFIC CONTROL AND PROTECTION, STANDARD 701306	L SUM	1					1	
70100600	TRAFFIC CONTROL AND PROTECTION, STANDARD 701336	L SUM	1					1	
70102630	TRAFFIC CONTROL AND PROTECTION, STANDARD 701601	L SUM	1				1		* SPECIALTY ITEM

SUMMARY OF QUANTITIES			TOTAL QUANTITIES	CONSTRUCTION TYPE CODE					
CODE NO	ITEM	UNIT		100% STATE	100% STATE	100% STATE	100% STATE	100% STATE	100% STATE
				0004 KENSINGTON RD. COOK CO. (LOC. #1)	0021 KENSINGTON RD. COOK CO. (LOC. #1)	0004 IL 137 LAKE CO. (LOC. #2)	0004 IL-290 DUPAGE CO. (LOC. #3)	0004 IL 64 (NORTH AVE.) DUPAGE CO. (LOC. #4)	0004 McCARTHY RD. COOK CO. (LOC. #5)
70102632	TRAFFIC CONTROL AND PROTECTION, STANDARD 701602	L SUM	1			1			
70102635	TRAFFIC CONTROL AND PROTECTION, STANDARD 701701	L SUM	1			0.5		0.5	
70102640	TRAFFIC CONTROL AND PROTECTION, STANDARD 701801	L SUM	1			1			
70107004	PAVEMENT MARKING BLACKOUT TAPE, 4"	FOOT	1692	1692					
70107024	PAVEMENT MARKING BLACKOUT TAPE, 24"	FOOT	13	13					
70107012	PAVEMENT MARKING BLACKOUT TAPE, 12"	FOOT	20	20					
70200100	NIGHTTIME WORK ZONE LIGHTING	L SUM	1			1			
70300150	SHORT TERM PAVEMENT MARKING REMOVAL	SO FT	1998	1373		625			
70300241	TEMPORARY PAVEMENT MARKING - LINE 6" PAINT	FOOT	1250			1250			
70307120	TEMPORARY PAVEMENT MARKING - LINE 4" - TYPE IV TAPE	FOOT	2208	2208					
70307130	TEMPORARY PAVEMENT MARKING - LINE 6" - TYPE IV TAPE	FOOT	1250			1250			
70400100	TEMPORARY CONCRETE BARRIER	FOOT	1250			1250			
70307210	TEMPORARY PAVEMENT MARKING - LINE 24" - TYPE IV TAPE	FOOT	13	13					
70400125	PINNING TEMPORARY CONCRETE BARRIER	EACH	294			294			
70600250	IMPACT ATTENUATORS, TEMPORARY (NON-REDIRECTIVE), TEST LEVEL 3	EACH	1			1			
* 72501000	TERMINAL MARKER - DIRECT APPLIED	EACH	1				1		

FILE NAME =	USER NAME = r1r1qfm	DESIGNED -	REVISED -
pw:\N\dot-pw\benley.com\PW\DOT\Documents\1007 - Office\District\Projects\10402\NCAD\Design\104021-sh-502		DRAWN -	REVISED -
		CHECKED -	REVISED -
		DATE -	REVISED -

**STATE OF ILLINOIS
DEPARTMENT OF TRANSPORTATION**

SUMMARY OF QUANTITIES VARIOUS ROUTES - VARIOUS LOCATIONS			
SCALE:	SHEET NO.	OF SHEETS	STA. TO STA.

F.A. RTE.	SECTION	COUNTY	TOTAL SHEETS	SHEET NO.
VAR.	2020-238-T	*	54	6
			CONTRACT NO. 62N07	
FED. ROAD DIST. NO. 1 ILLINOIS FED. AID PROJECT				

REVISION SHEET 4/13/2022
* COOK, DUPAGE, & LAKE

SUMMARY OF QUANTITIES			TOTAL QUANTITIES	CONSTRUCTION TYPE CODE					
CODE NO	ITEM	UNIT		100% STATE	100% STATE	100% STATE	100% STATE	100% STATE	100% STATE
				0004 KENSINGTON RD. COOK CO. (LOC. #1)	0021 KENSINGTON RD. COOK CO. (LOC. #1)	0004 IL 137 LAKE CO. (LOC. #2)	0004 IL-290 DUPAGE CO. (LOC. #3)	0004 IL 64 (NORTH AVE.) DUPAGE CO. (LOC. #4)	0004 McCARTHY RD. COOK CO. (LOC. #5)
* 78000200	THERMOPLASTIC PAVEMENT MARKING - LINE 4"	FOOT	86			10		52	24
* 78000300	THERMOPLASTIC PAVEMENT MARKING - LINE 5"	FOOT	10				10		
* 78000500	THERMOPLASTIC PAVEMENT MARKING - LINE 8"	FOOT	620				620		
* 78000600	THERMOPLASTIC PAVEMENT MARKING - LINE 12"	FOOT	113				113		
* 78000650	THERMOPLASTIC PAVEMENT MARKING - LINE 24"	FOOT	5					5	
* 78009008	MODIFIED URETHANE PAVEMENT MARKING - LINE 8"	FOOT	190				190		
* 78100100	RAISED REFLECTIVE PAVEMENT MARKER	EACH	4	2	0	2			
* 78100300	REPLACEMENT REFLECTOR	EACH	53	53					
* 78200005	GUARDRAIL REFLECTORS, TYPE A	EACH	4			4			
* 78200011	BARRIER WALL REFLECTORS, TYPE C	EACH	100			100			
78300200	RAISED REFLECTIVE PAVEMENT MARKER REMOVAL	EACH	2		0	2			
* 88600600	DETECTOR LOOP REPLACEMENT	FOOT	100				100		
X0323265	REMOVE EXISTING RIPRAP	SO YD	7						7
X0325207	TELEVISION INSPECTION OF SEWER	FOOT	2074				2074		
X0327649	SOIL RETENTION SYSTEM	SO FT	458	458					
			* SPECIALTY ITEM						

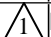
SUMMARY OF QUANTITIES			TOTAL QUANTITIES	CONSTRUCTION TYPE CODE					
CODE NO	ITEM	UNIT		100% STATE	100% STATE	100% STATE	100% STATE	100% STATE	100% STATE
				0004 KENSINGTON RD. COOK CO. (LOC. #1)	0021 KENSINGTON RD. COOK CO. (LOC. #1)	0004 IL 137 LAKE CO. (LOC. #2)	0004 IL-290 DUPAGE CO. (LOC. #3)	0004 IL 64 (NORTH AVE.) DUPAGE CO. (LOC. #4)	0004 McCARTHY RD. COOK CO. (LOC. #5)
X2020110	GRADING AND SHAPING SHOULDERS	UNIT	5.3						5.3
X4400501	COMBINATION CURB AND GUTTER REMOVAL AND REPLACEMENT LESS THAN OR EQUAL TO 10 FEET	FOOT	16			10			6
X4406620	PARTIAL DEPTH REMOVAL, TYPE IV, 2"	SO YD	165				165		
X4421000	PARTIAL DEPTH PATCHING	TON	19				19		
X4428187	CLASS D PATCHES, TYPE III, 13 INCH (SPECIAL)	SO YD	24						24
X4428189	CLASS D PATCHES, TYPE IV, 13 INCH (SPECIAL)	SO YD	100				100		
X5537600	STORM SEWERS TO BE CLEANED 8"	FOOT	40				40		
X5537700	STORM SEWERS TO BE CLEANED 10"	FOOT	64				64		
X5537800	STORM SEWERS TO BE CLEANED 12"	FOOT	1335				1286	49	
X5537900	STORM SEWERS TO BE CLEANED 15"	FOOT	432				432		
X5538000	STORM SEWERS TO BE CLEANED 18"	FOOT	578						578
X5538200	STORM SEWERS TO BE CLEANED 24"	FOOT	318				307	11	
X5538700	STORM SEWERS TO BE CLEANED 42"	FOOT	219						219
X5538800	STORM SEWERS TO BE CLEANED 48"	FOOT	231						231
X6700407	ENGINEER'S FIELD OFFICE, TYPE A (D1)	CAL MO	12	2.4		2.4	2.4	2.4	2.4

FILE NAME =	USER NAME = r1r1qfm	DESIGNED -	REVISED -
pw\N\dot-pw\benfrey.com\PW\DOT\Documents\1007 - Office\District 1\Projects\DI0402\NCAD\dot\Design\DI04021-shr-502.dwg		DRAWN -	REVISED -
		CHECKED -	REVISED -
		DATE -	REVISED -

**STATE OF ILLINOIS
DEPARTMENT OF TRANSPORTATION**

SUMMARY OF QUANTITIES VARIOUS ROUTES - VARIOUS LOCATIONS			
SCALE:	SHEET NO.	OF SHEETS	STA. TO STA.

F.A. RTE.	SECTION	COUNTY	TOTAL SHEETS	SHEET NO.
VAR.	2020-238-T	-	54	7
			CONTRACT NO. 62N07	
FED. ROAD DIST. NO. 1 ILLINOIS FED. AID PROJECT				


REVISED SHEET 4/13/2022
 • COOK, DUPAGE, & LAKE

SUMMARY OF QUANTITIES			TOTAL QUANTITIES	CONSTRUCTION TYPE CODE					
CODE NO	ITEM	UNIT		100% STATE	100% STATE	100% STATE	100% STATE	100% STATE	100% STATE
				0004 KENSINGTON RD. COOK CO. (LOC. #1)	0021 KENSINGTON RD. COOK CO. (LOC. #1)	0004 IL 137 LAKE CO. (LOC. #2)	0004 IL-290 DUPAGE CO. (LOC. #3)	0004 IL 64 (NORTH AVE.) DUPAGE CO. (LOC. #4)	0004 McCARTHY RD. COOK CO. (LOC. #5)
X7010216	TRAFFIC CONTROL AND PROTECTION, (SPECIAL)	L SUM	1	1					
X7011015	TRAFFIC CONTROL AND PROTECTION (EXPRESSWAYS)	L SUM	1				1		
X7830050	RAISED REFLECTIVE PAVEMENT MARKER, REFLECTOR REMOVAL	EACH	53	53	△				
Z0004562	COMBINATION CONCRETE CURB AND GUTTER REMOVAL AND REPLACEMENT	FOOT	24					24	
Z0013798	CONSTRUCTION LAYOUT	L SUM	1	0.2		0.2	0.2	0.2	0.2
Z0018500	DRAINAGE STRUCTURES TO BE CLEANED	EACH	45				34	9	2
Z0030850	TEMPORARY INFORMATION SIGNING	SO FT	205.6	51.4		51.4		51.4	51.4
Z0064600	SELECTIVE CLEARING	ACRE	0.85				0.78		0.07
* Z0073510	TEMPORARY TRAFFIC SIGNAL TIMING	EACH	1		1				
X4420815	CLASS D PATCHES, TYPE II, 14 INCH (SPECIAL)	SO YD	11	11	△				
X4421819	CLASS D PATCHES, TYPE III, 14 INCH (SPECIAL)	SO YD	17	17					
X4421839	CLASS D PATCHES, TYPE II, 16 INCH (SPECIAL)	SO YD	10			10			
X4421851	CLASS D PATCHES, TYPE II, 17 INCH (SPECIAL)	SO YD	17					17	
X1200328	STORM SEWER LINING, 36" DIAMETER	FOOT	60	60	△				
∅ Z0076604	TRAINEES - TRAINING PROGRAM GRADUATE	HOURS	500	500					

* SPECIALTY ITEM

SUMMARY OF QUANTITIES			TOTAL QUANTITIES	CONSTRUCTION TYPE CODE					
CODE NO	ITEM	UNIT		100% STATE	100% STATE	100% STATE	100% STATE	100% STATE	100% STATE
				0004 KENSINGTON RD. COOK CO. (LOC. #1)	0021 KENSINGTON RD. COOK CO. (LOC. #1)	0004 IL 137 LAKE CO. (LOC. #2)	0004 IL-290 DUPAGE CO. (LOC. #3)	0004 IL 64 (NORTH AVE.) DUPAGE CO. (LOC. #4)	0004 McCARTHY RD. COOK CO. (LOC. #5)

△ REVISED SHEET 4/13/2022

∅ 0042

* COOK, DUPAGE, & LAKE

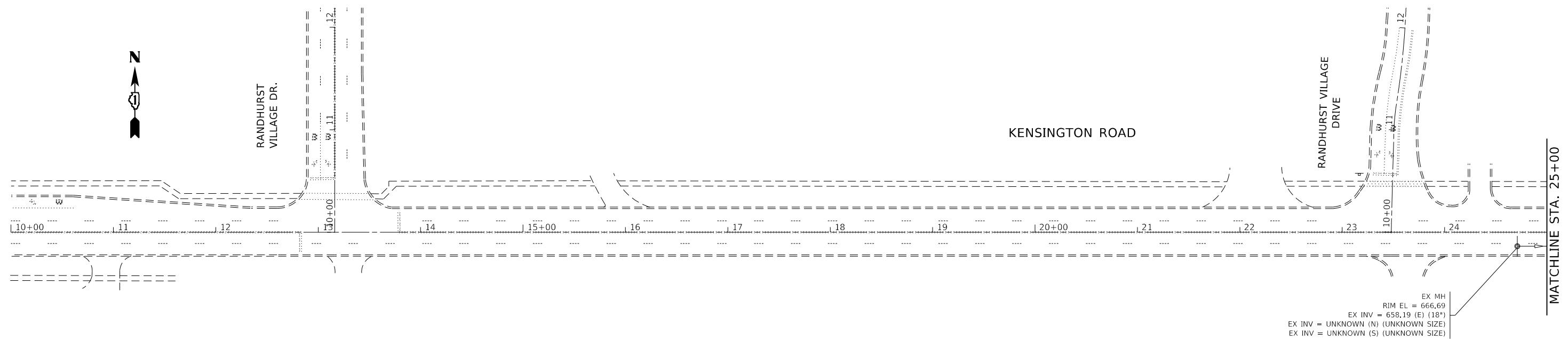
FILE NAME =	USER NAME = r1r1qfm	DESIGNED -	REVISED -
pw\N1dot-pw\Bentley.com\PI\DOT\Documents\1007 - Of Files\District\N\Projects\DI0402\NCAD\Design\DI04021-shr-502	DRAWN -	REVISOR -	REVISOR -
	CHECKED -	REVISOR -	REVISOR -
	DATE -	REVISOR -	REVISOR -

STATE OF ILLINOIS
DEPARTMENT OF TRANSPORTATION

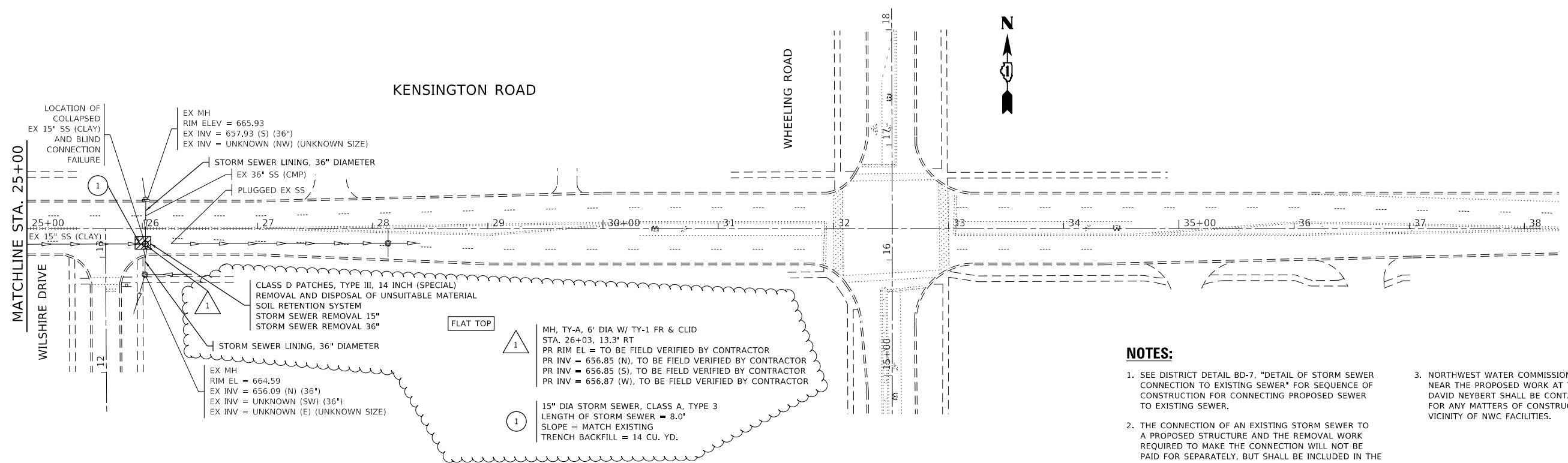
SUMMARY OF QUANTITIES
VARIOUS ROUTES - VARIOUS LOCATIONS

F.A. RTE.	SECTION	COUNTY	TOTAL SHEETS	SHEET NO.
VAR.	2020-238-T	*	54	8
SCALE:			CONTRACT NO. 62N07	
SHEET NO. OF SHEETS STA. TO STA.			FED. ROAD DIST. NO. 1 ILLINOIS FED. AID PROJECT	

LOCATION 1



EX MH
RIM EL = 666.69
EX INV = 658.19 (E) (18")
EX INV = UNKNOWN (N) (UNKNOWN SIZE)
EX INV = UNKNOWN (S) (UNKNOWN SIZE)



LOCATION OF COLLAPSED EX 15" SS (CLAY) AND BLIND CONNECTION FAILURE

EX MH
RIM ELEV = 665.93
EX INV = 657.93 (S) (36")
EX INV = UNKNOWN (NW) (UNKNOWN SIZE)

STORM SEWER LINING, 36" DIAMETER

EX 36" SS (CMP)

PLUGGED EX SS

CLASS D PATCHES, TYPE III, 14 INCH (SPECIAL) REMOVAL AND DISPOSAL OF UNSUITABLE MATERIAL SOIL RETENTION SYSTEM STORM SEWER REMOVAL 15" STORM SEWER REMOVAL 36"

STORM SEWER LINING, 36" DIAMETER

EX MH
RIM EL = 664.59
EX INV = 656.09 (N) (36")
EX INV = UNKNOWN (SW) (36")
EX INV = UNKNOWN (E) (UNKNOWN SIZE)

FLAT TOP

1 MH, TY-A, 6' DIA W/ TY-1 FR & CLID
STA. 26+03, 13.3' RT
PR RIM EL = TO BE FIELD VERIFIED BY CONTRACTOR
PR INV = 656.85 (N), TO BE FIELD VERIFIED BY CONTRACTOR
PR INV = 656.85 (S), TO BE FIELD VERIFIED BY CONTRACTOR
PR INV = 656.87 (W), TO BE FIELD VERIFIED BY CONTRACTOR

1 15" DIA STORM SEWER, CLASS A, TYPE 3
LENGTH OF STORM SEWER = 8.0'
SLOPE = MATCH EXISTING
TRENCH BACKFILL = 14 CU. YD.

NOTES:

- SEE DISTRICT DETAIL BD-7, "DETAIL OF STORM SEWER CONNECTION TO EXISTING SEWER" FOR SEQUENCE OF CONSTRUCTION FOR CONNECTING PROPOSED SEWER TO EXISTING SEWER.
- THE CONNECTION OF AN EXISTING STORM SEWER TO A PROPOSED STRUCTURE AND THE REMOVAL WORK REQUIRED TO MAKE THE CONNECTION WILL NOT BE PAID FOR SEPARATELY, BUT SHALL BE INCLUDED IN THE CONTRACT UNIT PRICE FOR THE ITEM BEING INSTALLED.
- NORTHWEST WATER COMMISSION (NWC) HAS FACILITIES NEAR THE PROPOSED WORK AT THIS LOCATION. DAVID NEYBERT SHALL BE CONTACTED AT (847) 635-0777 FOR ANY MATTERS OF CONSTRUCTION IN THE IMMEDIATE VICINITY OF NWC FACILITIES.

1 REVISED SHEET 4/13/2022
* COOK, DUPAGE, & LAKE

MODEL: Default
FILE: \\nas01\paw\benclay.com\PI\DOT\Documents\DOT_Offices\Drh\drd_1\Projects\104021\CO\Draws\Drawings\104021-1-shb-sub-ban.dgn

USER NAME = tariqfm	DESIGNED -	REVISED - FT, 3/15/2022
PLOT SCALE = 100,0000' / in.	DRAWN -	REVISED -
PLOT DATE = 3/15/2022	CHECKED -	REVISED -
	DATE -	REVISED -

**STATE OF ILLINOIS
DEPARTMENT OF TRANSPORTATION**

**KENSINGTON ROAD - ROADWAY AND DRAINAGE PLAN
VARIOUS ROUTES - VARIOUS LOCATIONS**

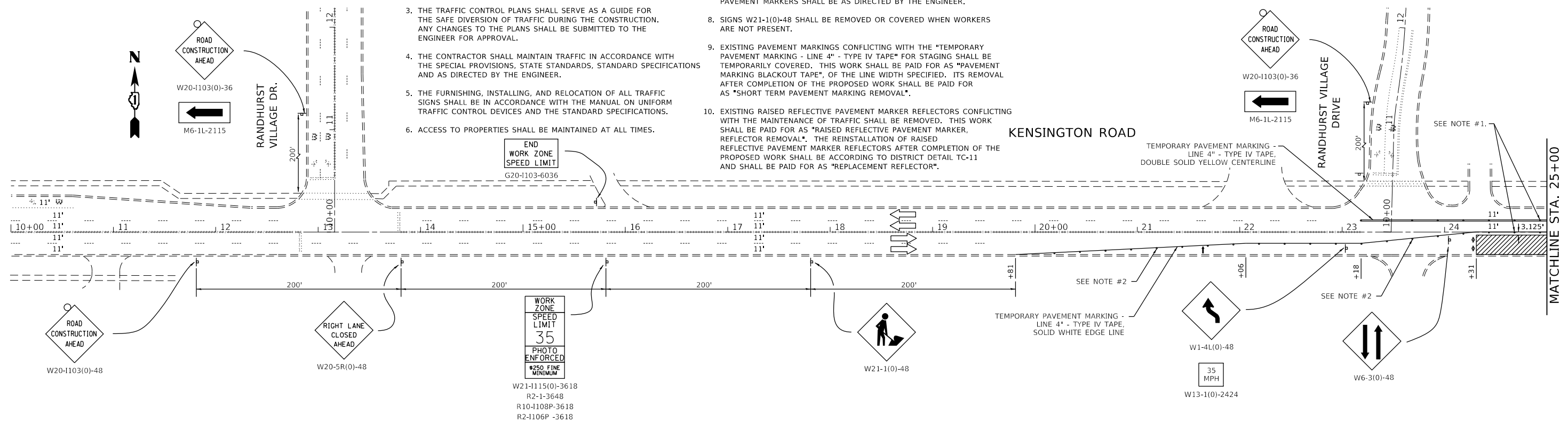
SCALE: SHEET OF SHEETS STA. TO STA.

F.A. RTE.	SECTION	COUNTY	TOTAL SHEETS	SHEET NO.
VAR.	2020-238-T	*	54	14
CONTRACT NO. 62N07				
ILLINOIS		FED. AID PROJECT		

LOCATION 1

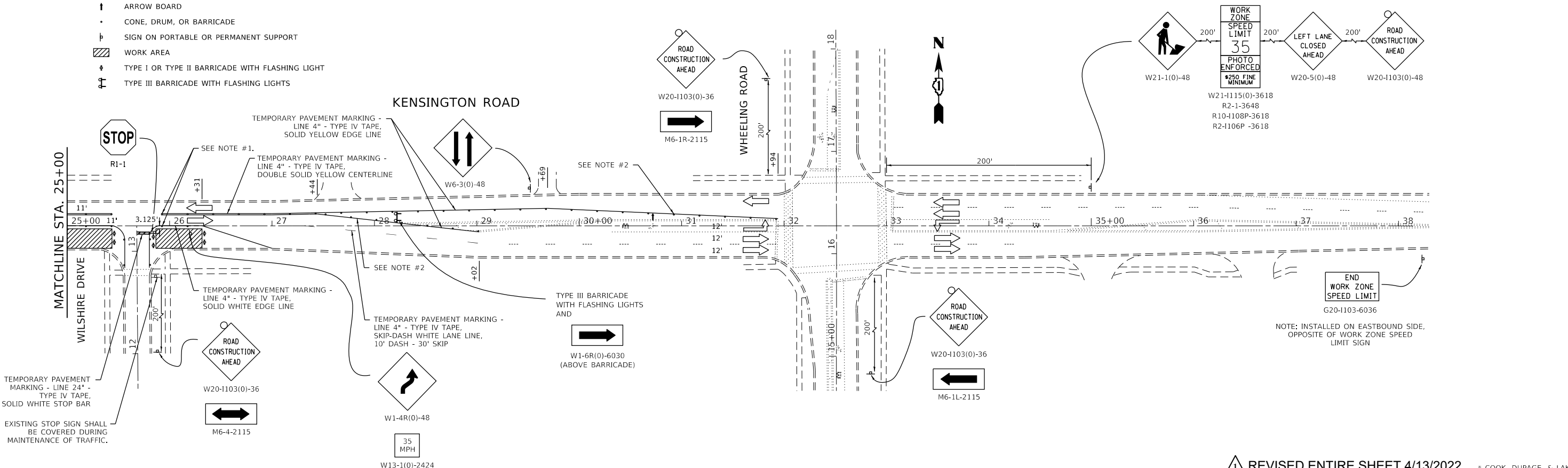
NOTES:

- CONES AT 25' CENTERS FOR 250'. ADDITIONAL CONES MAY BE PLACED AT 50' CENTERS. WHEN DRUMS OR TYPE I OR TYPE II BARRICADES ARE USED, THE INTERVAL BETWEEN DEVICES MAY BE DOUBLED.
- CONES, DRUMS, OR BARRICADES AT 20' CENTERS IN TAPER.
- THE TRAFFIC CONTROL PLANS SHALL SERVE AS A GUIDE FOR THE SAFE DIVERSION OF TRAFFIC DURING THE CONSTRUCTION. ANY CHANGES TO THE PLANS SHALL BE SUBMITTED TO THE ENGINEER FOR APPROVAL.
- THE CONTRACTOR SHALL MAINTAIN TRAFFIC IN ACCORDANCE WITH THE SPECIAL PROVISIONS, STATE STANDARDS, STANDARD SPECIFICATIONS AND AS DIRECTED BY THE ENGINEER.
- THE FURNISHING, INSTALLING, AND RELOCATION OF ALL TRAFFIC SIGNS SHALL BE IN ACCORDANCE WITH THE MANUAL ON UNIFORM TRAFFIC CONTROL DEVICES AND THE STANDARD SPECIFICATIONS.
- ACCESS TO PROPERTIES SHALL BE MAINTAINED AT ALL TIMES.
- BEFORE BEGINNING ANY WORK, THE CONTRACTOR SHALL RETAIN AND RECORD FOR FUTURE REFERENCE, ALL EXISTING PAVEMENT MARKING LINES AND RAISED REFLECTIVE PAVEMENT MARKERS THAT CONFLICT WITH MAINTENANCE OF TRAFFIC STRIPING IN ORDER THAT THESE LOCATIONS CAN BE RE-ESTABLISHED POST STAGING. EXACT LOCATIONS OF ALL PAVEMENT MARKINGS AND RAISED REFLECTIVE PAVEMENT MARKERS SHALL BE AS DIRECTED BY THE ENGINEER.
- SIGNS W21-1(0)-48 SHALL BE REMOVED OR COVERED WHEN WORKERS ARE NOT PRESENT.
- EXISTING PAVEMENT MARKINGS CONFLICTING WITH THE "TEMPORARY PAVEMENT MARKING - LINE 4" - TYPE IV TAPE" FOR STAGING SHALL BE TEMPORARILY COVERED. THIS WORK SHALL BE PAID FOR AS "PAVEMENT MARKING BLACKOUT TAPE", OF THE LINE WIDTH SPECIFIED. ITS REMOVAL AFTER COMPLETION OF THE PROPOSED WORK SHALL BE PAID FOR AS "SHORT TERM PAVEMENT MARKING REMOVAL".
- EXISTING RAISED REFLECTIVE PAVEMENT MARKER REFLECTORS CONFLICTING WITH THE MAINTENANCE OF TRAFFIC SHALL BE REMOVED. THIS WORK SHALL BE PAID FOR AS "RAISED REFLECTIVE PAVEMENT MARKER, REFLECTOR REMOVAL". THE REINSTALLATION OF RAISED REFLECTIVE PAVEMENT MARKER REFLECTORS AFTER COMPLETION OF THE PROPOSED WORK SHALL BE ACCORDING TO DISTRICT DETAIL TC-11 AND SHALL BE PAID FOR AS "REPLACEMENT REFLECTOR".
- APPLICABLE HIGHWAY STANDARDS FOR TRAFFIC CONTROL AND PROTECTION FOR DAY-TIME LANE CLOSURES SHALL BE UTILIZED TO COMPLETE THE PROPOSED STORM SEWER LINING.



LEGEND:

- ↑ ARROW BOARD
- CONE, DRUM, OR BARRICADE
- ▬ SIGN ON PORTABLE OR PERMANENT SUPPORT
- ▨ WORK AREA
- ⚡ TYPE I OR TYPE II BARRICADE WITH FLASHING LIGHT
- ⚡ TYPE III BARRICADE WITH FLASHING LIGHTS



MODEL: D:\draft\...
 FILE: M:\MTC...
 PROJECT: 2020-238-T...
 SHEET: 15 OF 15

USER NAME = tariqfm	DESIGNED -	REVISED - FT, 3/15/2022
PLOT SCALE = 100,0000' / in.	DRAWN -	REVISED -
PLOT DATE = 3/15/2022	CHECKED -	REVISED -
	DATE -	REVISED -

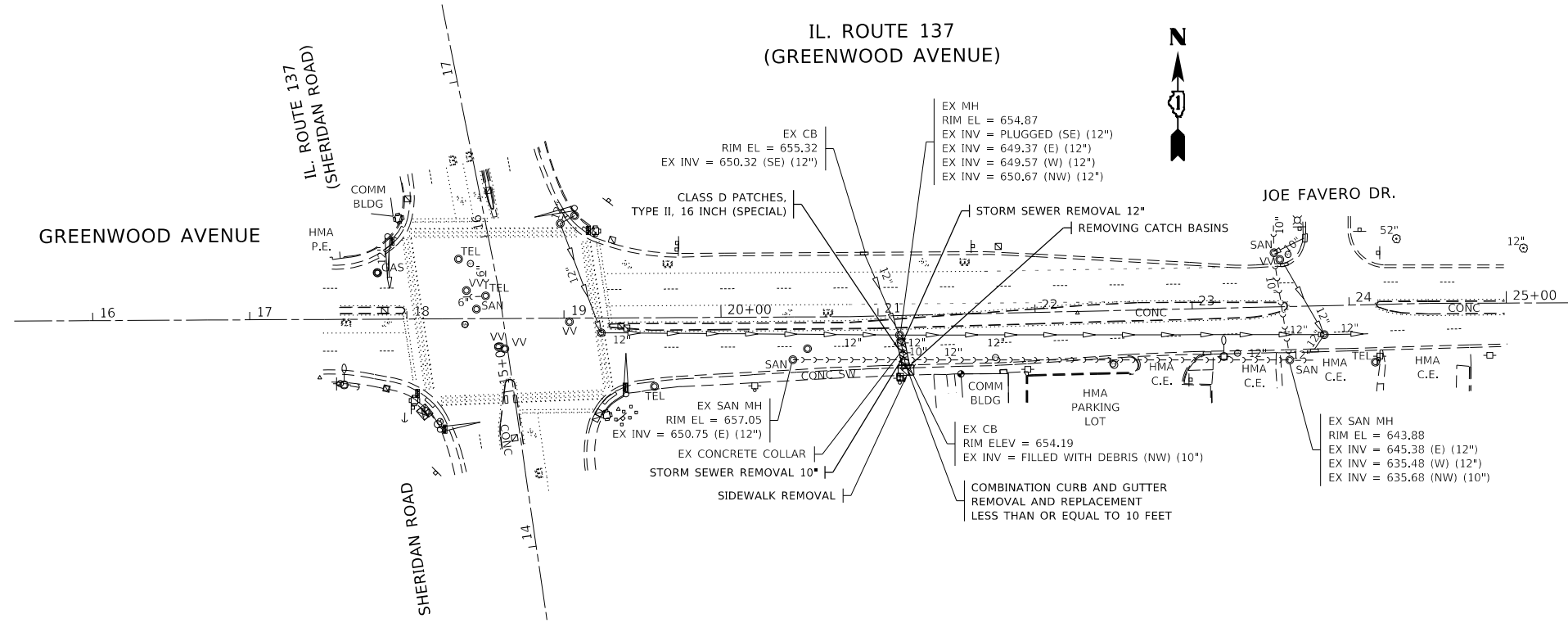
STATE OF ILLINOIS
DEPARTMENT OF TRANSPORTATION

KENSINGTON ROAD - MAINTENANCE OF TRAFFIC PLAN
VARIOUS ROUTES - VARIOUS LOCATIONS

SCALE: 1"=50' SHEET OF SHEETS STA. TO STA.

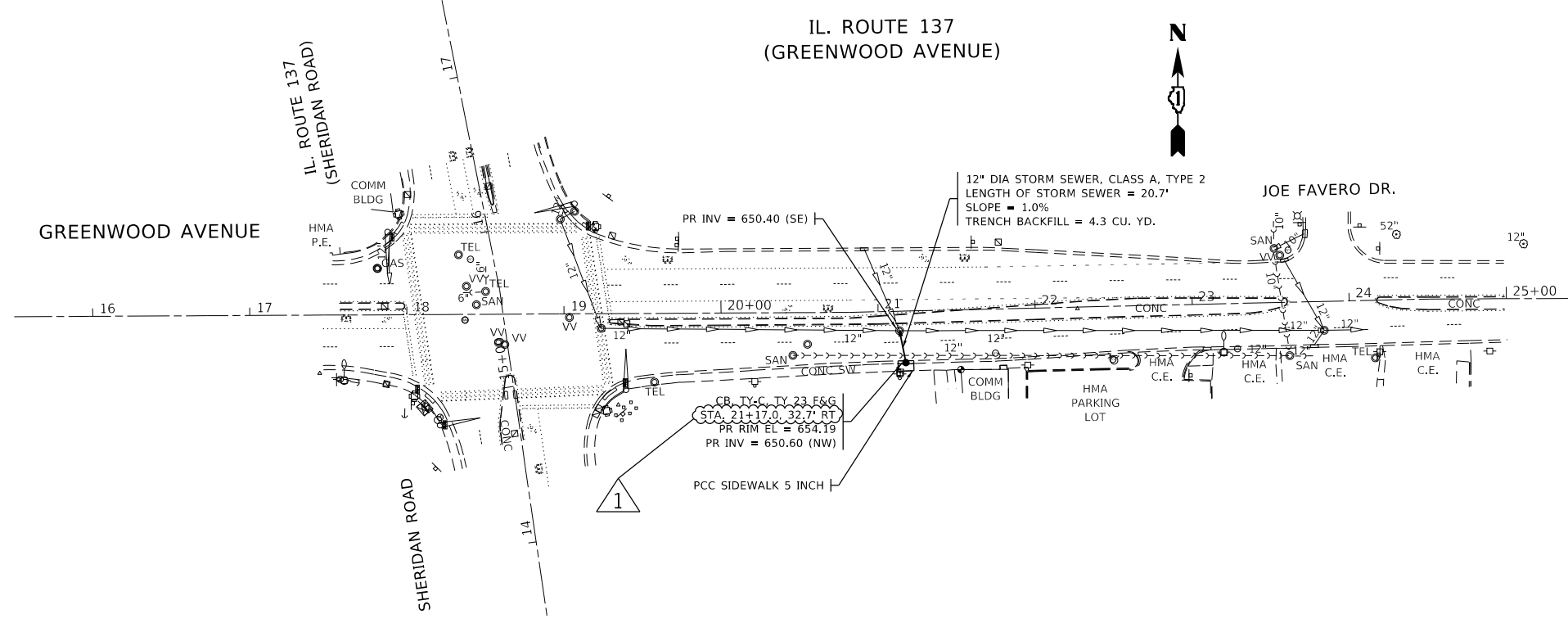
REVISIONS: 1. REVISED ENTIRE SHEET 4/13/2022 * COOK, DUPAGE, & LAKE

F.A. RTE.	SECTION	COUNTY	TOTAL SHEETS	SHEET NO.
VAR.	2020-238-T	*	54	15
CONTRACT NO. 62N07				
ILLINOIS FED. AID PROJECT				



NOTES:

1. THE REMOVAL OF THE EXISTING CONCRETE COLLAR WILL NOT BE PAID FOR SEPARATELY, BUT SHALL BE INCLUDED IN THE CONTRACT UNIT PRICE FOR THE ITEM BEING REMOVED.



NOTES:

1. THE CONNECTION OF THE PROPOSED STORM SEWER TO THE EXISTING STRUCTURE, AND THE REMOVAL WORK REQUIRED TO MAKE THE CONNECTION WILL NOT BE PAID FOR SEPARATELY, BUT SHALL BE INCLUDED IN THE CONTRACT UNIT PRICE FOR THE ITEM BEING INSTALLED.

REVISOR: [Symbol] REVISED SHEET 4/13/2022

* COOK, DUPAGE, & LAKE

MODEL: D:\default
 FILE: Main\paw_bentley.com\paw\DOT Documents\DOT Office\Dr\trt. 1\Project\3104021\COOD\paw\Drawings\3104021_sht-16n.dgn

USER NAME = tariqfm	DESIGNED -	REVISED -	4/12/2022
	DRAWN -	REVISED -	
PLOT SCALE = 100,0000' / in.	CHECKED -	REVISED -	
PLOT DATE = 4/12/2022	DATE -	REVISED -	

**STATE OF ILLINOIS
DEPARTMENT OF TRANSPORTATION**

**IL 137 - ROADWAY AND DRAINAGE PLAN
VARIOUS ROUTES - VARIOUS LOCATIONS**

SCALE: SHEET OF SHEETS STA. TO STA.

F.A. RTE.	SECTION	COUNTY	TOTAL SHEETS	SHEET NO.
	2020-238-T		54	16
CONTRACT NO. 62N07			ILLINOIS FED. AID PROJECT	

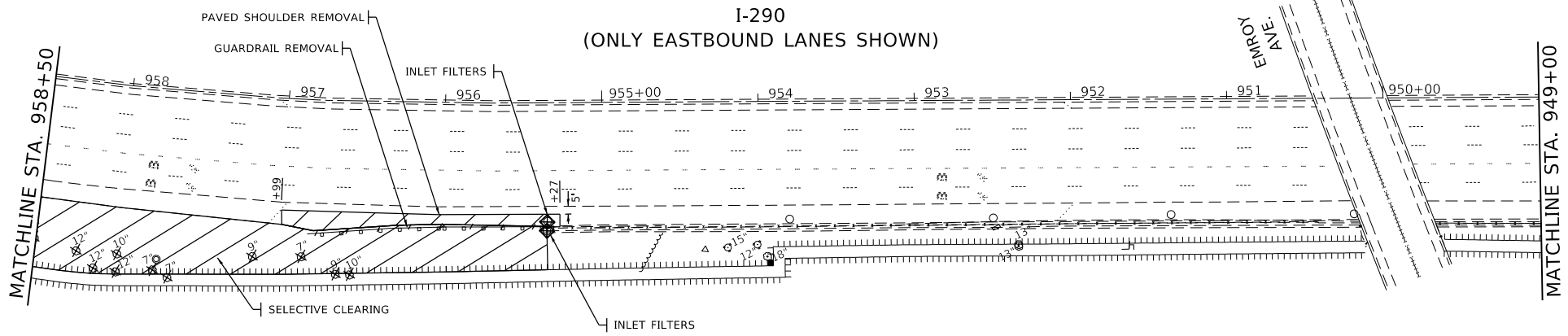
LOCATION 3

LEGEND

- ✕ TREE REMOVAL (6 TO 15 UNITS DIAMETER) OR TREE REMOVAL (OVER 15 UNITS DIAMETER)
- ▨ SELECTIVE CLEARING

NOTES:

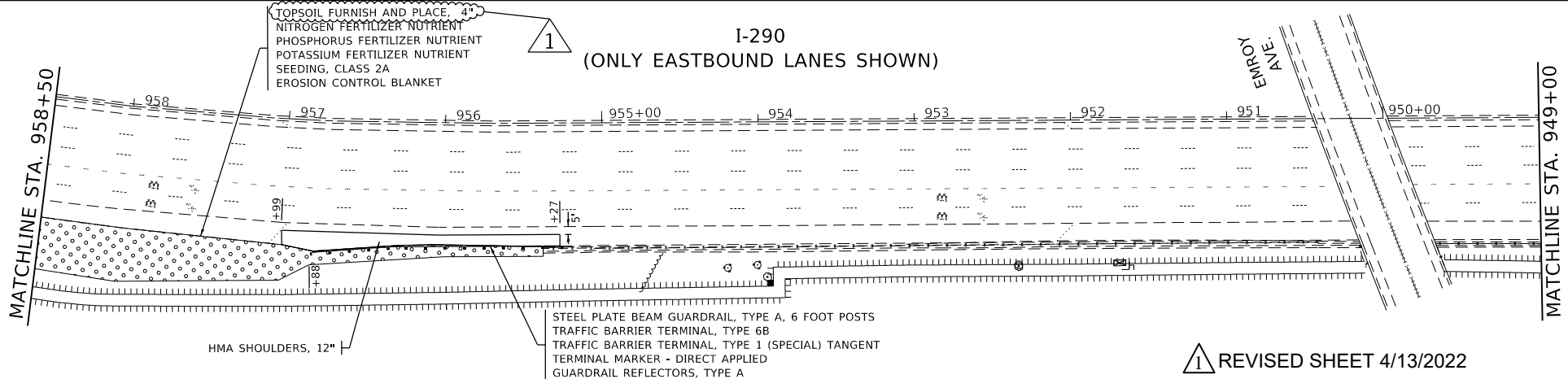
1. SELECTIVE CLEARING SHALL BE COMPLETED FROM THE EDGE OF THE SHOULDER TO THE NOISE WALL BETWEEN STA. 955+35 AND STA. 961+00 AND FROM THE EDGE OF THE SHOULDER TO THE EXTENT OF PROPOSED REGRADING BETWEEN STA. 961+00 AND STA. 964+15.



EXISTING

LEGEND

- ▨ SEEDING, CLASS 2A

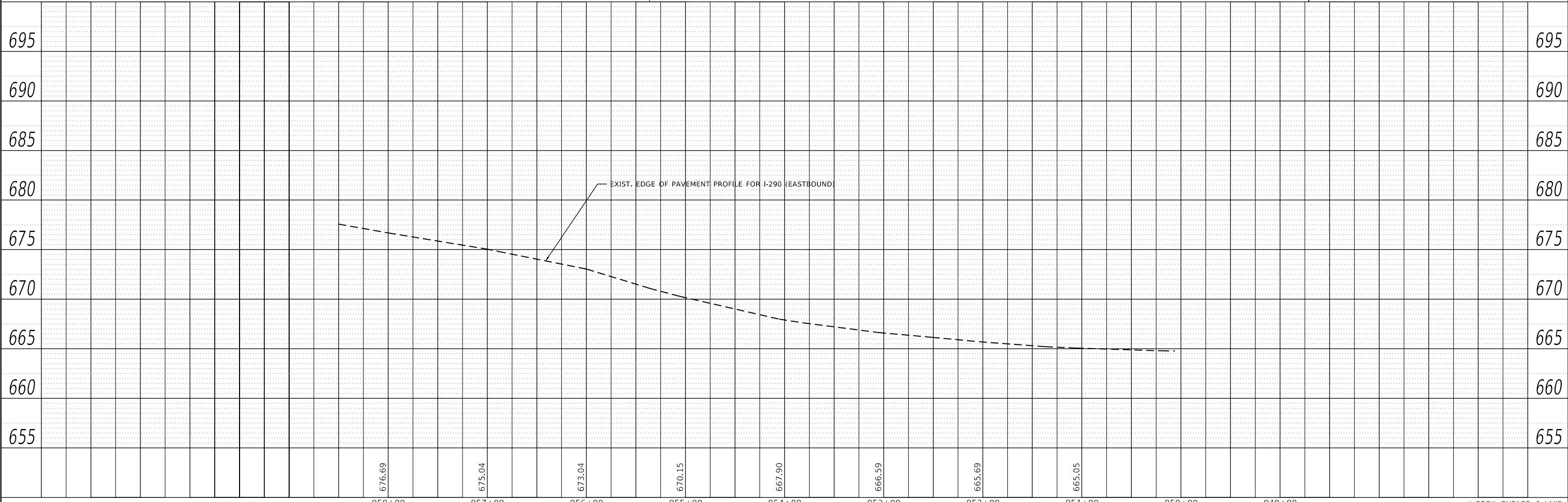


PROPOSED

⚠ REVISÉD SHEET 4/13/2022

MAINTENANCE OF TRAFFIC NOTES:

1. PERMANENT SHOULDER CLOSURES PER DISTRICT DETAIL TC-17 SHALL BE USED FOR ALL PROPOSED WORK EXCEPT SETUP AND REMOVAL OF TEMPORARY CONCRETE BARRIER, SHOULDER INSTALLATION, PATCHING, RESURFACING WORK, STORM SEWER CLEANING AND TELEVISIONING, BOX CULVERT CLEANING, CLEANING AND RECONSTRUCTING DRAINAGE STRUCTURES AND INSTALLATION OF PAVEMENT MARKING AND MARKERS.
2. TEMPORARY CONCRETE BARRIER PER DISTRICT DETAIL TC-17 (PERMANENT SHOULDER CLOSURES) SHALL BE INSTALLED FROM STA. 954+70 TO STA. 967+20. PINNING IS REQUIRED AT ALL LOCATIONS WHERE TEMPORARY CONCRETE BARRIER IS PROPOSED TO BE INSTALLED.
3. OVERNIGHT CLOSURES PER HIGHWAY STANDARDS 701400, 701401, 701411, 701428, 701446 AND DISTRICT DETAILS TC-08 AND TC-17 SHALL BE USED FOR THE SETUP AND REMOVAL OF TEMPORARY CONCRETE BARRIER PER DISTRICT DETAIL TC-17, SHOULDER INSTALLATION, PATCHING, RESURFACING WORK, STORM SEWER CLEANING AND TELEVISIONING, BOX CULVERT CLEANING, CLEANING AND RECONSTRUCTING DRAINAGE STRUCTURES AND INSTALLATION OF PAVEMENT MARKING AND MARKERS.



PLAN	SURVEYED	DATE
	PLOTTED	
	ALIGNMENT CHECKED	
	GRADE CHECKED	
	STRUCTURE NOTATIONS CHECKED	
	NOTE BOOK NO.	
	CADD FILE NAME	

PROFILE	SURVEYED	DATE
	PLOTTED	
	GRADES CHECKED	
	STRUCTURE NOTATIONS CHECKED	
	NOTE BOOK NO.	
	CADD FILE NAME	

MODEL: Default
FILE NAME: p:\illinois\pww_bentley.com\pwwid\DOT Documents\DOT Office\Bentley 1\Projects\1044021\CAD\Drawings\1044021-1-shr-11.dwg

USER NAME = tariqfm	DESIGNED -	REVISÉD - 1 4/12/2022
PLOT SCALE = 100,0000' / in.	DRAWN -	REVISÉD -
PLOT DATE = 4/12/2022	CHECKED -	REVISÉD -
	DATE -	REVISÉD -

**STATE OF ILLINOIS
DEPARTMENT OF TRANSPORTATION**

I-290 - ROADWAY PLAN AND PROFILE			
VARIOUS ROUTES - VARIOUS LOCATIONS			
SCALE:	SHEET	OF SHEETS	STA. TO STA.

F.A. RTE.	SECTION	COUNTY	TOTAL SHEETS	SHEET NO.
VAR.	2020-238-T	*	54	18
CONTRACT NO. 62N07				
ILLINOIS FED. AID PROJECT				

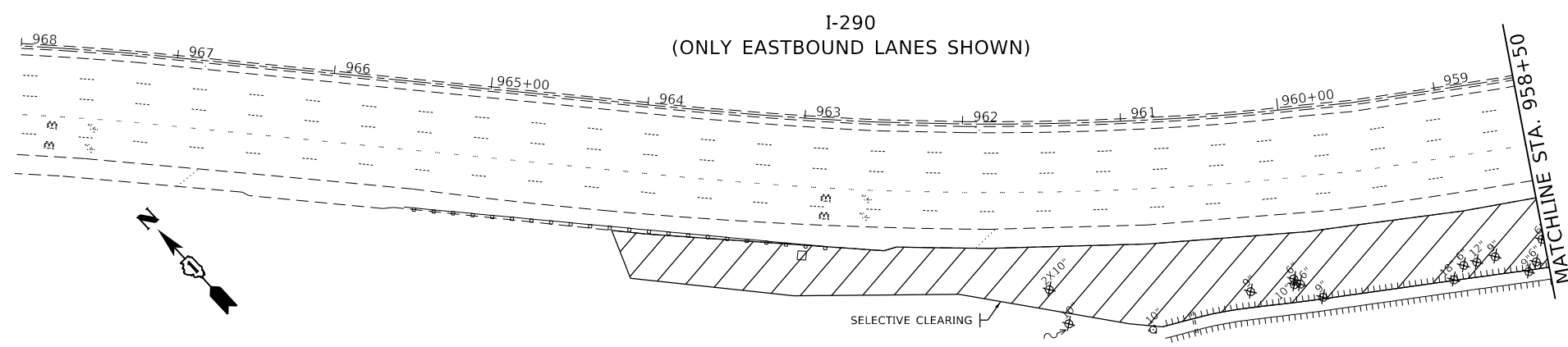
* COOK, DUPAGE, & LAKE

LEGEND

- × TREE REMOVAL (6 TO 15 UNITS DIAMETER) OR TREE REMOVAL (OVER 15 UNITS DIAMETER)
- ▨ SELECTIVE CLEARING

NOTES:

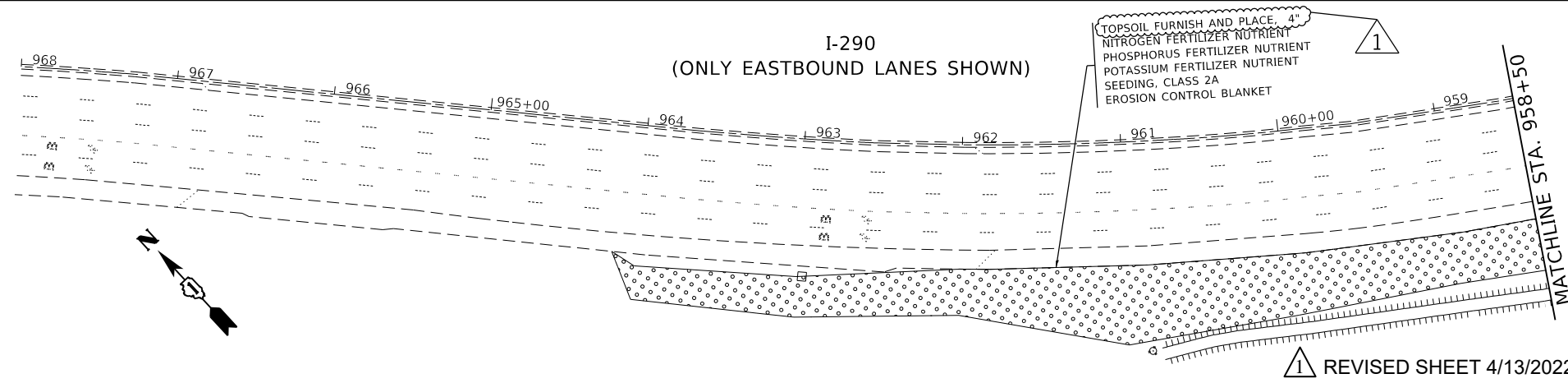
1. SELECTIVE CLEARING SHALL BE COMPLETED FROM THE EDGE OF THE SHOULDER TO THE NOISE WALL BETWEEN STA. 955+35 AND STA. 961+00 AND FROM THE EDGE OF THE SHOULDER TO THE EXTENT OF PROPOSED REGRADING BETWEEN STA. 961+00 AND STA. 964+15.



EXISTING

LEGEND

- SEEDING, CLASS 2A

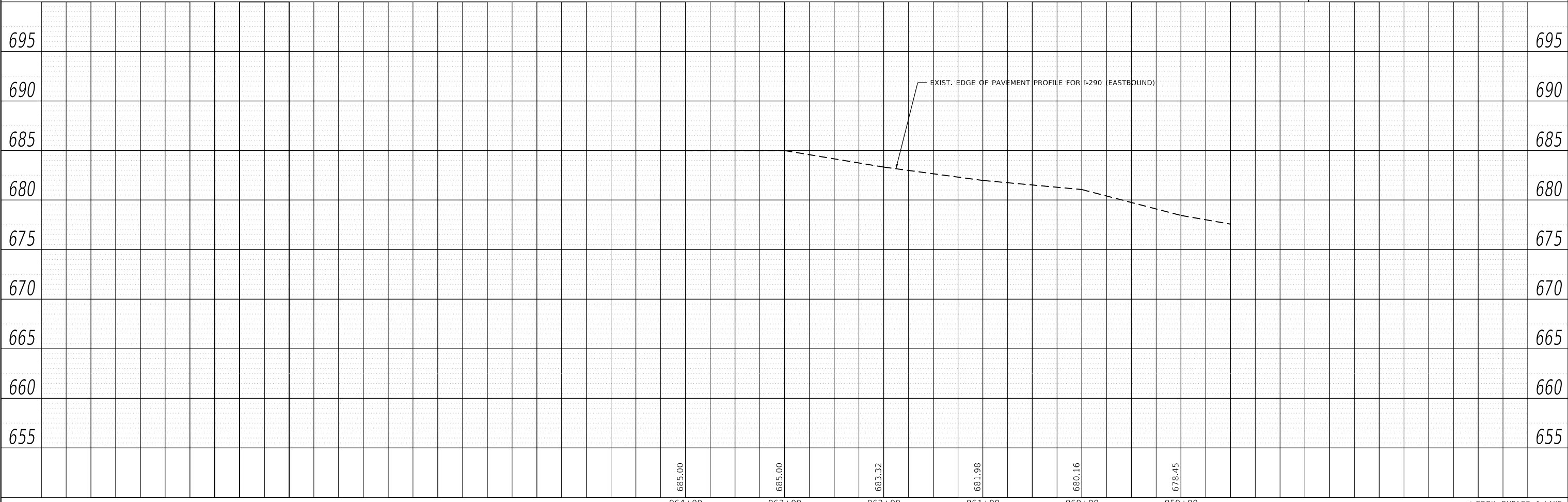


PROPOSED

MAINTENANCE OF TRAFFIC NOTES:

1. PERMANENT SHOULDER CLOSURES PER DISTRICT DETAIL TC-17 SHALL BE USED FOR ALL PROPOSED WORK EXCEPT SETUP AND REMOVAL OF TEMPORARY CONCRETE BARRIER, SHOULDER INSTALLATION, PATCHING, RESURFACING WORK, STORM SEWER CLEANING AND TELEVISIONING, BOX CULVERT CLEANING, CLEANING AND RECONSTRUCTING DRAINAGE STRUCTURES AND INSTALLATION OF PAVEMENT MARKING AND MARKERS.
2. TEMPORARY CONCRETE BARRIER PER DISTRICT DETAIL TC-17 (PERMANENT SHOULDER CLOSURES) SHALL BE INSTALLED FROM STA. 954+70 TO STA. 967+20. PINNING IS REQUIRED AT ALL LOCATIONS WHERE TEMPORARY CONCRETE BARRIER IS PROPOSED TO BE INSTALLED.
3. OVERNIGHT CLOSURES PER HIGHWAY STANDARDS 701400, 701401, 701411, 701428, 701446 AND DISTRICT DETAILS TC-08 AND TC-17 SHALL BE USED FOR THE SETUP AND REMOVAL OF TEMPORARY CONCRETE BARRIER PER DISTRICT DETAIL TC-17, SHOULDER INSTALLATION, PATCHING, RESURFACING WORK, STORM SEWER CLEANING AND TELEVISIONING, BOX CULVERT CLEANING, CLEANING AND RECONSTRUCTING DRAINAGE STRUCTURES AND INSTALLATION OF PAVEMENT MARKING AND MARKERS.

1 REVISED SHEET 4/13/2022



685.00 685.00 683.32 681.98 680.16 678.45

* COOK, DUPAGE, & LAKE

USER NAME = tariqfm	DESIGNED -	REVISED - 4/12/2022
PLOT SCALE = 100,0000' / in.	DRAWN -	REVISED -
PLOT DATE = 4/12/2022	CHECKED -	REVISED -
	DATE -	REVISED -

**STATE OF ILLINOIS
DEPARTMENT OF TRANSPORTATION**

**I-290 - ROADWAY PLAN AND PROFILE
VARIOUS ROUTES - VARIOUS LOCATIONS**

SCALE: SHEET OF SHEETS STA. TO STA.

F.A. RTE.	SECTION	COUNTY	TOTAL SHEETS	SHEET NO.
VAR.	2020-238-T	*	54	19
			CONTRACT NO. 62N07	
		ILLINOIS	FED. AID PROJECT	

PLAN

DATE	
BY	
SURVEYED	
PLOTTED	
ALIGNMENT CHECKED	
AS-BUILT FILE NAME	
NO.	

PROFILE

DATE	
BY	
SURVEYED	
PLOTTED	
GRADES CHECKED	
STRUCTURE NOTATIONS CHECKED	
NO.	

MODEL: Default
FILE NAME: p:\illinois\pww_bentley.com\pwwid\DOT\Documents\DOT_Offices\Burler_1\Projects\1044021\CAD\Drawings\1044021-shr-rln.dwg

EARTHWORK SCHEDULE								
1	2	3	4	5	6	7	8	9
I-290, WEST OF EMROY AVENUE	EARTH EXCAVATION (CU. YD.)	EMBANKMENT (CU. YD.)	EARTH EXCAVATION TO BE USED AS EMBANKMENT (ADJUSTED FOR SHRINKAGE AND a(5)) (CU. YD.)	EARTHWORK BALANCE SURPLUS (+) OR SHORTAGE (-) (CU. YD.)	TOPSOIL EXCAVATION (CU. YD.)	TOPSOIL REQUIRED (CU. YD.)	TOPSOIL EXCAVATION TO BE USED FOR LANDSCAPING (ADJUSTED FOR a(5)) (CU. YD.)	TOPSOIL BALANCE SURPLUS (+) OR SHORTAGE (-) (CU. YD.)
TOTAL =	419	28	0	-28	480	323	0	-323

COLUMN 1: LOCATION FROM PLANS

COLUMN 2: CUT QUANTITIES FROM CROSS SECTIONS, WHICH DOES NOT INCLUDE UNSUITABLE MATERIAL OR TOPSOIL

COLUMN 3: FILL QUANTITIES FROM CROSS SECTIONS

COLUMN 4: EARTH EXCAVATION THAT IS TO BE USED AS EMBANKMENT, ADJUSTED FOR SHRINKAGE (SHRINKAGE FACTOR = 15%) AND DUE TO PRESENCE OF ARTICLE 669.05(A)(5) CONTAMINATED SITE PER "REMOVAL AND DISPOSAL OF REGULATED SUBSTANCES (PROJECT SPECIFIC)" SPECIAL PROVISION

COLUMN 5: COLUMN 4 - COLUMN 3

POSITIVE QUANTITY = EXTRA EXCAVATION

NEGATIVE QUANTITY = FURNISHED EXCAVATION NEEDED

COLUMN 6: TOPSOIL EXCAVATED TO A DEPTH OF 6" IN AREAS THAT SHALL BE DISTURBED BY PROPOSED WORK

COLUMN 7: TOPSOIL REQUIRED BASED ON AREA OF PROPOSED SEEDING (PLACED AT AREAS OF PROPOSED SEEDING AT A DEPTH OF 4")

COLUMN 8: TOPSOIL EXCAVATION THAT IS TO BE USED FOR LANDSCAPING, ADJUSTED DUE TO PRESENCE OF ARTICLE 669.05(A)(5) CONTAMINATED SITE PER "REMOVAL AND DISPOSAL OF REGULATED SUBSTANCES (PROJECT SPECIFIC)" SPECIAL PROVISION

COLUMN 9: COLUMN 8 - COLUMN 7

POSITIVE QUANTITY = EXTRA TOPSOIL

NEGATIVE QUANTITY = TOPSOIL FURNISH AND PLACE NEEDED

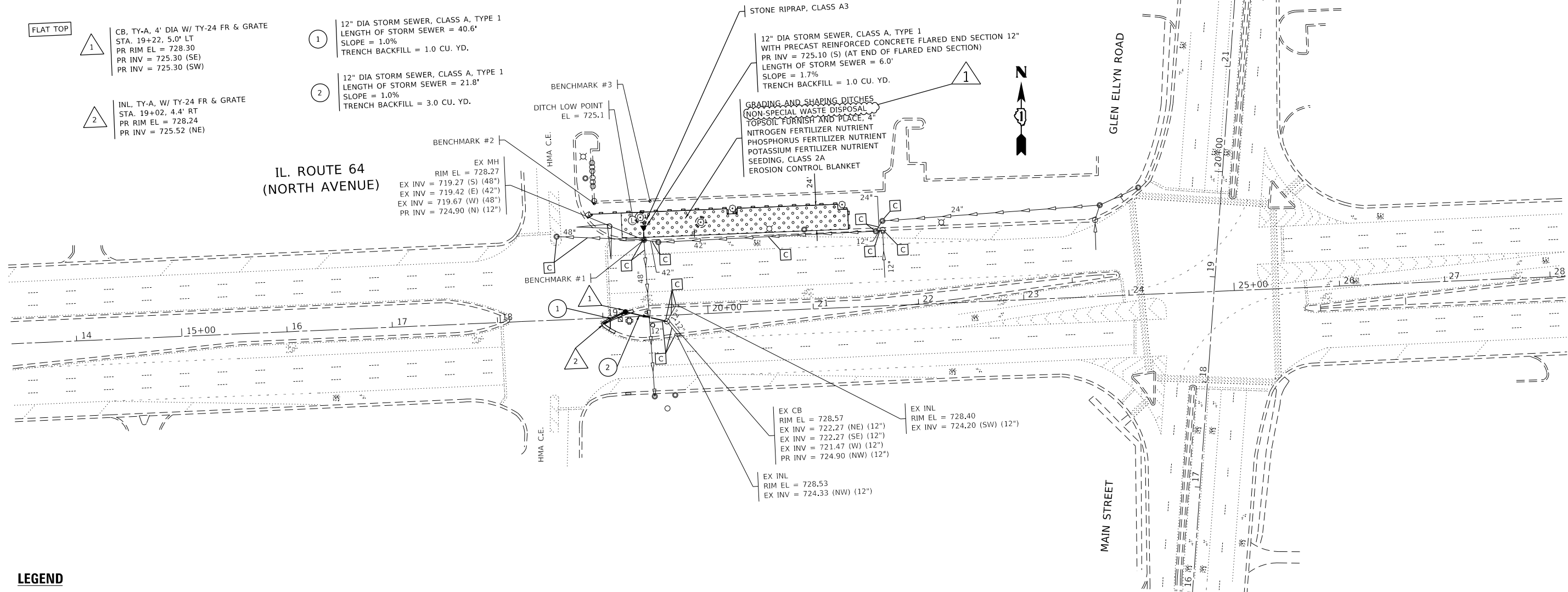
1

MODEL: D:\draft\...
FILE NAME: ...
PROJECT: ...
DATE: 4/12/2022

REVISED SHEET 4/13/2022

* COOK, DUPAGE, & LAKE

USER NAME = tariqfm	DESIGNED -	REVISED - 1 4/12/2022	STATE OF ILLINOIS DEPARTMENT OF TRANSPORTATION	I-290 - EARTHWORK SCHEDULE VARIOUS ROUTES - VARIOUS LOCATIONS	F.A. RTE.	SECTION	COUNTY	TOTAL SHEETS	SHEET NO.	
PLOT SCALE = 100,0000 ' / in.	DRAWN -	REVISED -			VAR.	2020-238-T	*	54	23	
PLOT DATE = 4/12/2022	CHECKED -	REVISED -			CONTRACT NO. 62N07					
	DATE -	REVISED -			SCALE:	SHEET	OF	SHEETS	STA.	TO



LEGEND

- PERIMETER EROSION BARRIER
- TEMPORARY FENCE
- STONE RIPRAP, CLASS A3
- SEEDING, CLASS 2A
- DRAINAGE STRUCTURE OR STORM SEWER TO BE CLEANED

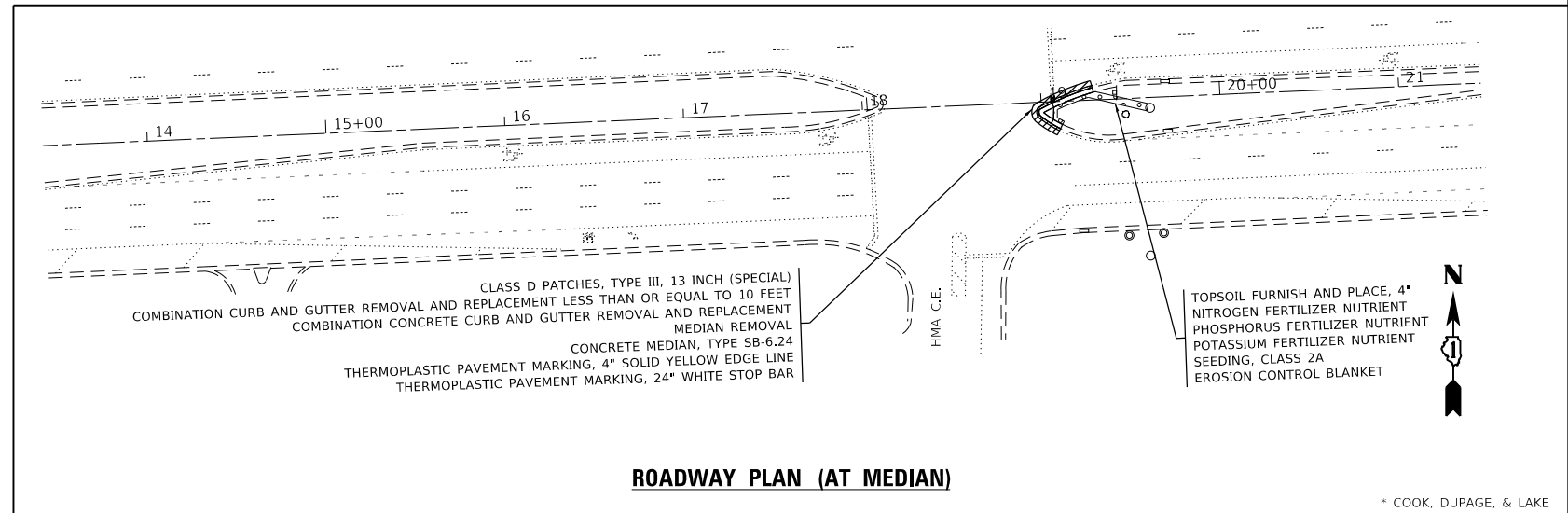
NOTES:

1. THE CONNECTION OF THE PROPOSED STORM SEWER TO THE EXISTING STRUCTURE, AND THE REMOVAL WORK REQUIRED TO MAKE THE CONNECTION WILL NOT BE PAID FOR SEPARATELY, BUT SHALL BE INCLUDED IN THE CONTRACT UNIT PRICE FOR THE ITEM BEING INSTALLED.
2. TEMPORARY FENCE SHOULD BE ERECTED ALONG THE DRIPLINE OF THE TREES DESIGNATED TO REMAIN WITHIN THE LIMITS OF CONSTRUCTION. THIS IS TO ESTABLISH A "TREE PROTECTION ZONE" BEFORE ANY WORK BEGINS OR ANY MATERIAL IS DELIVERED TO THE JOBSITE. NO WORK IS TO BE PERFORMED OR MATERIALS STORED WITHIN THE "TREE PROTECTION ZONE". TEMPORARY FENCE SHALL BE REMOVED ONLY AFTER ALL CONSTRUCTION WORK HAS BEEN COMPLETED.

BENCHMARKS:

BENCHMARK #	NORTHING	EASTING	ELEVATION
1	1907557.60	1057273.92	728.265
2	1907592.19	1057226.75	726.200
3	1907594.61	1057279.58	726.816

REVISED ENTIRE SHEET 4/13/2022



MODEL: D:\default... FILE: MainC... PROJECT: D:\Documents\DOT Office\DrHrft... PROJECT: D:\Documents\DOT Office\DrHrft...

USER NAME = tariqfm	DESIGNED -	REVISED - 4/12/2022
PLOT SCALE = 100,0000' / in.	DRAWN -	REVISED -
PLOT DATE = 4/12/2022	CHECKED -	REVISED -
	DATE -	REVISED -

**STATE OF ILLINOIS
DEPARTMENT OF TRANSPORTATION**

**IL 64 - ROADWAY AND DRAINAGE PLAN
VARIOUS ROUTES - VARIOUS LOCATIONS**

SCALE: SHEET OF SHEETS STA. TO STA.

F.A. RTE.	SECTION	COUNTY	TOTAL SHEETS	SHEET NO.
VAR.	2020-238-T	*	54	24
CONTRACT NO. 62N07				
ILLINOIS FED. AID PROJECT				

* COOK, DUPAGE, & LAKE