

STATE OF ILLINOIS  
DEPARTMENT OF TRANSPORTATION  
DIVISION OF HIGHWAYS

**PROPOSED  
HIGHWAY PLANS**

F.A.U. 1270: COUNTY-LINE RD.  
E. OF HAEGERS BEND RD. TO HART RD.  
SECTION: 2021-116-RS  
PROJECT: STP-97DB(036)  
DESIGNED OVERLAY AND ADA IMPROVEMENT  
McHENRY, LAKE & COOK COUNTY

C-91-244-21

F.A.U. RTE.	SECTION	COUNTY	TOTAL SHEETS	SHEET NO.
1270	2021-116-RS	ILLINOIS	30	1
* McHENRY, LAKE & COOK				

FOR INDEX OF SHEET, SEE SHEET NO.2

THE PROJECT IS LOCATED IN THE VILLAGE OF BARRINGTON HILLS

D-91-205-21



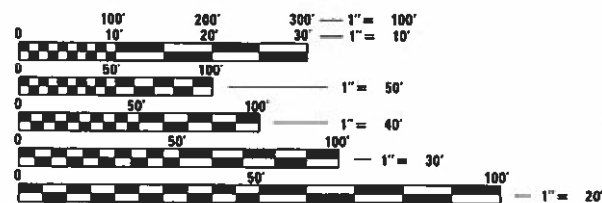
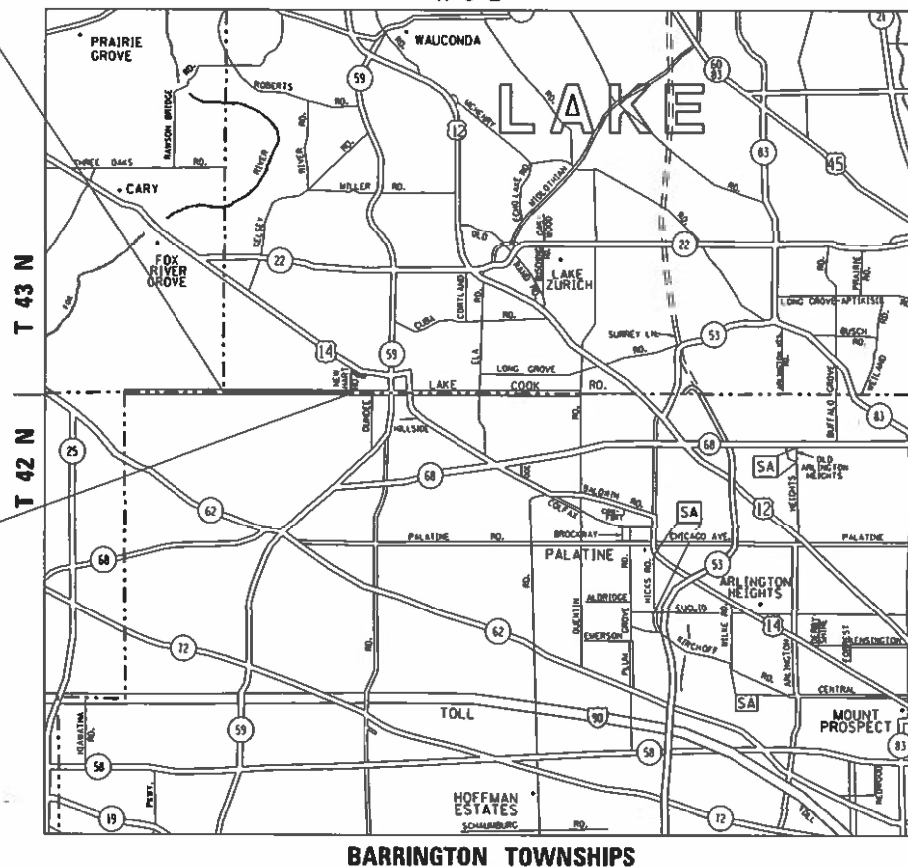
LOCATION OF SECTION INDICATED THIS: - [shaded area]

**TRAFFIC DATA**

COUNTY-LINE RD.: 2018 ADT = 8550 - 9950  
POSTED SPEED LIMIT = 40 - 50 MPH

PROJECT BEGIN  
STA 71+25

PROJECT ENDS  
STA 306+08



FULL SIZE PLANS HAVE BEEN PREPARED USING STANDARD ENGINEERING SCALES. REDUCED SIZED PLANS WILL NOT CONFORM TO STANDARD SCALES. IN MAKING MEASUREMENTS ON REDUCED PLANS, THE ABOVE SCALES MAY BE USED.

J.U.L.I.E.  
JOINT UTILITY LOCATION INFORMATION FOR EXCAVATION  
1-800-892-0123  
OR 811

PROJECT MANAGER: ALAIN MIDY (847) 221-3056  
PROJECT ENGINEER: RODRIGO LEDEZMA (847) 705-4580  
CONTRACT NO. 62P47

GROSS & NET LENGTH = 23483 FT. = 4.44 MILE

STATE OF ILLINOIS  
DEPARTMENT OF TRANSPORTATION  
DIVISION OF HIGHWAYS

SUBMITTED JANUARY 28, 2022

*Jose Ruiz* (CRS) REGIONAL ENGINEER  
March 25, 2022

*[Signature]* ENGINEER OF DESIGN AND ENVIRONMENT  
March 2, 2022

*Stephen M. Fair* DIRECTOR OF HIGHWAYS PROJECT IMPLEMENTATION

PRINTED BY THE AUTHORITY  
OF THE STATE OF ILLINOIS

**INDEX OF SHEETS**

SHEET NO.	DESCRIPTION
1	COVER SHEET
2	INDEX OF SHEETS, STATE STANDARDS & GENERAL NOTES
3-5	SUMMARY OF QUANTITIES
6	SCHEDULE OF QUANTITIES
7	EXISTING AND PROPOSED TYPICAL SECTIONS
8-15	ROADWAY PLAN
16	ADA DETAIL FOR SINGLE PREPENDICULAR CURB RAMPS (PD-01)
17	ADA DETAIL FOR SINGLE PREPENDICULAR CURB RAMPS (PD-02)
18	ADA DETAIL FOR DOUBLE PREPENDICULAR CURB RAMPS (PD-03)
19	ADA DETAIL FOR SINGLE PREPENDICULAR CURB RAMPS WITH TURNING SPACE (PD-04)
20	ADA DETAIL FOR DEPRESSED CORNER CURB RAMPS (PD-05) TURNING SPACE (PD-05)
21	DETAILS FOR FRAMES AND LIDS ADJUSTMENT WITH MILLING (BD-08)
22	PAVEMENT PATCHING FOR HMA SURFACED PAVEMENT (BD-22)
23	CURB OR CURB AND GUTTER REMOVAL AND REPLACEMENT (BD-24)
24	BUTT JOINT AND HMA TAPER DETAILS (BD-32)
25	TRAFFIC CONTROL AND PROTECTION FOR SIDE ROADS, INTERSECTIONS, AND DRIVEWAYS (TC-10)
26	TYPICAL APPLICATIONS RAISED REFLECTIVE PAVEMENT MARKERS (SNOW PLOW RESISTANT) (TC-11)
27	DISTRICT ONE TYPICAL PAVEMENT MARKINGS (TC-13)
28	TRAFFIC CONTROL AND PROTECTION AT TURN BAYS (TO REMAIN OPEN TO TRAFFIC) (TC-14)
29	SHORT TERM PAVEMENT MARKING LETTERS AND SYMBOLS (TC-16)
30	ARTERIAL ROAD INFORMATION SIGN (TC-22)

**STATE HIGHWAY STANDARDS**

STANDARD NO.	DESCRIPTION
000001-08	STANDARD SYMBOLS, ABBREVIATIONS AND PATTERNS
442201-03	CLASS C AND D PATCHES
424001-11	PREPENDICULAR CURB RAMPS FOR SIDEWALK
701006-05	OFF-ROAD OPERATION, 2L, 2W, 15' to 24" FROM PAVEMENT EDGE
701011-04	OFF-ROAD MOVING OPERATIONS, 2L, 2W, DAY ONLY
701301-04	LANE CLOSURE , 2L, 2W, SHORT TIME OPERATIONS
701306-04	LANE CLOSURE , 2L, 2W, SLOW MOVING OPERATIONS-DAY ONLY, FOR SPEED ≥ 45 MPH
701311-03	LANE CLOSURE , 2L, 2W, MOVING OPERATIONS-DAY ONLY
701336-07	LANE CLOSURE , 2L, 2W, WORK AREAS IN SERIES, FOR SPEEDS ≥ 45 MPH
701501-06	URBAN LANE CLOSURE, 2L, 2W, UNDIVIDED
701502-09	URBAN LANE CLOSURE, 2L, 2W, WITH BIDIRECTIONAL LEFT TURN LANE
701701-10	URBAN LANE CLOSURE, MULTILANE INTERSECTION
701801-06	LANE CLOSURE MULTILANE, 1W OR 2W CROSSWALK OR SIDEWALK CLOSURE
701901-08	TRAFFIC CONTROL DEVICES

**GENERAL NOTES**

- BEFORE STARTING ANY EXCAVATION, THE CONTRACTOR SHALL CALL "JULIE" AT (800) 892-0123 OR 811 FOR FIELD LOCATIONS OF BURIED ELECTRIC, TELEPHONE, AND GAS FACILITIES. (48 HOUR NOTIFICATION REQUIRED)
- THE CONTRACTOR SHALL COORDINATE CONSTRUCTION ACTIVITIES WITH UTILITY COMPANIES AND THE VILLAGE OF BARRINGTON HILLS.
- FRAMES AND GRATES ADJUSTMENT OF PRIVATE UTILITIES WITHIN THE LIMITS OF THE IMPROVEMENTS SHALL BE DONE BY THEIR RESPECTIVE OWNERS AND ARE NOT PART OF THIS CONTRACT.
- THE CONTRACTOR SHALL CONTACT DISTRICT ONE ARTERIAL TRAFFIC CONTROL SUPERVISOR AT KALPANA.KANNAN-HOSADURGA@ILLINOIS.GOV A MINIMUM OF 72 HOURS IN ADVANCE OF BEGINNING WORK.
- THE CONTRACTOR WILL NOT BE ALLOWED TO SET UP A YARD OR FIELD OFFICE ON STATE PROPERTY WITHOUT THE WRITTEN PERMISSION OF THE DEPARTMENT.
- UNLESS OTHER CONDITIONS WARRANT EXTENDED LANE CLOSURE AS DETERMINED AND APPROVED IN WRITING BY THE RESIDENT ENGINEER OR AS PROVIDED FOR IN THE CONTRACT SPECIFICATIONS, OVERNIGHT CLOSURES SHALL NOT BE ALLOWED FOR REHABILITATION PROJECTS INVOLVING DAYTIME MILLING AND RESURFACING OPERATIONS AND CLASS D PATCHING.
- IT SHALL BE THE CONTRACTOR'S RESPONSIBILITY TO VERIFY ALL DIMENSIONS AND CONDITIONS EXISTING IN THE FIELD PRIOR TO CONSTRUCTION AND ORDERING OF MATERIALS.
- DO NOT SCALE PLANS FOR CONSTRUCTION DIMENSIONS.
- THE CONTRACTOR SHALL BE REQUIRED TO PROVIDE ACCESS TO ABUTTING PROPERTY AT ALL TIMES DURING THE CONSTRUCTION OF THIS PROJECT.
- ALL PAVEMENT PATCHING LOCATIONS WILL BE DETERMINED IN THE FIELD BY THE RESIDENT ENGINEER/TECHNICIAN.
- DRAINAGE ADJUSTMENT OR RECONSTRUCTION LOCATIONS WILL BE DETERMINED IN THE FIELD BY THE ENGINEER.
- FOR FRAMES AND LIDS ADJUSTMENT WITHOUT MILLING, REUSE EXISTING FRAME AND LID UNLESS OTHERWISE SPECIFIED IN THE PLANS.
- WHEN MILLED PAVEMENT IS OPEN TO TRAFFIC, THE MAXIMUM GRADE DIFFERENTIAL BETWEEN PASSES OF THE MILLING MACHINE SHALL NOT EXCEED 1½ INCHES WHERE THE SPEED LIMIT IS 45 MPH OR LESS, AND 1 INCH WHERE THE SPEED LIMIT IS OVER 45 MPH. WITH WRITTEN APPROVAL FROM THE RESIDENT ENGINEER, A MAXIMUM GRADE DIFFERENTIAL OF 3 INCHES MAY BE ALLOWED IF THE EDGE OF THE MILLING IS SLOPED A MINIMUM OF 1V:3H.
- BUTT JOINTS WILL BE INSTALLED AT THE ENDS OF RESURFACING (WHERE RESURFACING MEETS EXISTING PAVEMENT) IN ACCORDANCE WITH THE "BUTT JOINT AND HMA TAPER DETAILS" SHEET INCLUDED IN THE PLANS, UNLESS OTHERWISE SPECIFIED.
- THE RESIDENT ENGINEER SHALL CONTACT PATRICE HARRIS , IDOT AREA TRAFFIC FIELD ENGINEER VIA E-MAIL AT PATRICE.HARRIS@ILLINOIS.GOV, A MINIMUM OF 2 WEEKS PRIOR TO PLACEMENT OF PERMANENT PAVEMENT MARKINGS.
- BEFORE BEGINNING ANY WORK, THE CONTRACTOR SHALL RETAIN AND RECORD FOR FUTURE REFERENCE, ALL EXISTING PAVEMENT MARKING LINES (AND RAISED REFLECTIVE PAVEMENT MARKERS) IN ORDER THAT THESE LOCATIONS CAN BE RE-ESTABLISHED FOR STRIPING. EXACT LOCATIONS OF ALL PAVEMENT MARKINGS SHALL BE AS DIRECTED BY THE RESIDENT ENGINEER.
- ANY PAVEMENT MARKINGS AND RAISED REFLECTIVE PAVEMENT MARKERS OBLITERATED BY MILLING AND RESURFACING OPERATIONS ON SIDE STREETS AND ENTRANCES SHALL BE REPLACED AND PAID FOR IN KIND.
- PAVEMENT MARKING TAPE, TYPE III SHALL BE USED FOR SHORT TERM PAVEMENT MARKINGS ON ALL FINAL SURFACES.
- LATHES HAVE BEEN PLACED ALONG THE ROADSIDE WITHIN THE PROJECT LIMITS DEMARCATING AREAS OF RESTORATION. CONTRACTOR SHALL NOTIFY THE IDOT BUREAU OF MAINTENANCE ROADSIDE DEVELOPMENT UNIT AT 847-705-4171 A WEEK IN ADVANCE TO REVIEW LAYOUT PRIOR TO WEED CONTROL AND RESTORATION WORK.
- ALL MILLED SURFACE SHALL BE AT A UNIFORM CROSS SLOPE PER LANE AND FREE OF RIDGES BETWEEN PASSES AND ANY DEVIATIONS SHALL BE CORRECTED AT NO COST TO THE DEPARTMENT.

\* McHENRY, COOK & LAKE

FILE NAME =	USER NAME = abebawa	DESIGNED -	REVISED -	<b>STATE OF ILLINOIS DEPARTMENT OF TRANSPORTATION</b>	<b>INDEX OF SHEETS, STATE STANDARDS AND GENERAL NOTES LAKE-COOK RD (E. OF HAEGERS BEND RD. TO HART RD)</b>	F.A.U. RTE.	SECTION	COUNTY	TOTAL SHEETS	SHEET NO.	
		CHECKED -	REVISED -			1270	2020-087-R5	*	30	2	
		DATE -	REVISED -			CONTRACT NO. 62P47					
Default	PLOT DATE = 2/11/2022					SCALE:	SHEET	OF	SHEETS	STA.	TO

SUMMARY OF QUANTITIES			TOTAL QUANTITIES URBAN	CONSTRUCTION TYPE CODE			
CODE NO	ITEM	UNIT		0005 OVERLAY 80% FED 20% STATE McHenry	0005 OVERLAY 80% FED 20% STATE COOK	0005 OVERLAY 80% FED 20% STATE LAKE	0005 OVERLAY 100% STATE
20200100	EARTH EXCAVATION	CU YD	4.2			4.2	
21101615	TOPSOIL FURNISH AND PLACE, 4"	SO YD	28556	4356	12584	11616	
25000115	SEEDING, CLASS 1B	ACRE	2		1	1	
25000210	SEEDING, CLASS 2A	ACRE	3.9	0.9	1.6	1.4	
25000400	NITROGEN FERTILIZER NUTRIENT	POUND	354	114	96	144	
25000500	PHOSPHORUS FERTILIZER NUTRIENT	POUND	354	114	96	144	
25000600	POTASSIUM FERTILIZER NUTRIENT	POUND	384	144	96	144	
25100125	MULCH, METHOD 3	ACRE	5.9	1.3	2.5	2.1	
25200110	SODDING, SALT TOLERANT	SO YD	105			105	
40600290	BITUMINOUS MATERIALS (TACK COAT)	POUND	46702	9870	19561	17271	
40600370	LONGITUDINAL JOINT SEALANT	FOOT	23483	5166	9862	8455	
40600400	MIXTURE FOR CRACKS, JOINTS, AND FLANGEWAYS	TON	103	22	43	38	
40600982	HOT-MIX ASPHALT SURFACE REMOVAL - BUTT JOINT	SO YD	183	45	74	64	
40602985	HOT-MIX ASPHALT BINDER COURSE, IL-9.5, N70	TON	7749	1638	3245	2866	

SUMMARY OF QUANTITIES			TOTAL QUANTITIES URBAN	CONSTRUCTION TYPE CODE			
CODE NO	ITEM	UNIT		0005 OVERLAY 80% FED 20% STATE McHenry	0005 OVERLAY 80% FED 20% STATE COOK	0005 OVERLAY 80% FED 20% STATE LAKE	0005 OVERLAY 100% STATE
40604172	POLYMERIZED HOT-MIX ASPHALT SURFACE COURSE, IL-9.5, MIX "E", N70	TON	6780	1433	2840	2507	
42001300	PROTECTIVE COAT	SO YD	53			53	
42400200	PORTLAND CEMENT CONCRETE SIDEWALK 5 INCH	SO FT	275			275	
42400800	DETECTABLE WARNINGS	SO FT	20			20	
44000164	HOT-MIX ASPHALT SURFACE REMOVAL, 3/4"	SO YD	69192	14623	28982	25587	
44000600	SIDEWALK REMOVAL	SO FT	275			275	
44201815	CLASS D PATCHES, TYPE II, 14 INCH	SO YD	437	127	160	150	
44201819	CLASS D PATCHES, TYPE III, 14 INCH	SO YD	320	110	100	110	
44201821	CLASS D PATCHES, TYPE IV, 14 INCH	SO YD	642	161	320	161	
48102100	AGGREGATE WEDGE SHOULDER, TYPE B	TON	2684	440	1041	1203	
60300105	FRAMES AND GRATES TO BE ADJUSTED	EACH	3		2	1	
* 63000001	STEEL PLATE BEAM GUARDRAIL, TYPE A, 6 FOOT POSTS	FOOT	325		163	162	
* 63100167	TRAFFIC BARRIER TERMINAL, TYPE 1 (SPECIAL) TANGENT	EACH	5		3	2	

\* SPECIALTY ITEM

SUMMARY OF QUANTITIES			TOTAL QUANTITIES URBAN	CONSTRUCTION TYPE CODE			
CODE NO	ITEM	UNIT		0005 OVERLAY 80% FED 20% STATE McHenry	0005 OVERLAY 80% FED 20% STATE COOK	0005 OVERLAY 80% FED 20% STATE LAKE	0005 OVERLAY 100% STATE
63200310	GUARDRAIL REMOVAL	FOOT	575		288	287	
* 66900200	NON-SPECIAL WASTE DISPOSAL	CU YD	5			5	
* 66900530	SOIL DISPOSAL ANALYSIS	EACH	1			1	
* 66901003	REGULATED SUBSTANCES FINAL CONSTRUCTION REPORT	L SUM	1			1	
* 66901006	REGULATED SUBSTANCES MONITORING	CAL DA	1			1	
67100100	MOBILIZATION	L SUM	1	0.3	0.4	0.3	
70100460	TRAFFIC CONTROL AND PROTECTION, STANDARD 701306	L SUM	1	0.3	0.4	0.3	
70100600	TRAFFIC CONTROL AND PROTECTION, STANDARD 701336	L SUM	1	0.3	0.4	0.3	
70102620	TRAFFIC CONTROL AND PROTECTION, STANDARD 701501	L SUM	1	0.3	0.4	0.3	
70102622	TRAFFIC CONTROL AND PROTECTION, STANDARD 701502	L SUM	1	0.3	0.4	0.3	
70102635	TRAFFIC CONTROL AND PROTECTION, STANDARD 701701	L SUM	1	0.3	0.4	0.3	
70102640	TRAFFIC CONTROL AND PROTECTION, STANDARD 701801	L SUM	1	0.3	0.4	0.3	

SUMMARY OF QUANTITIES			TOTAL QUANTITIES URBAN	CONSTRUCTION TYPE CODE			
CODE NO	ITEM	UNIT		0005 OVERLAY 80% FED 20% STATE McHenry	0005 OVERLAY 80% FED 20% STATE COOK	0005 OVERLAY 80% FED 20% STATE LAKE	0005 OVERLAY 100% STATE
70300100	SHORT TERM PAVEMENT MARKING	FOOT	14916	3281	6264	5371	
70300150	SHORT TERM PAVEMENT MARKING REMOVAL	SO FT	4475	984	1879	1612	
70300211	TEMPORARY PAVEMENT MARKING LETTERS AND SYMBOLS - PAINT	SO FT	292.8	64.4	122.9	105	
70300221	TEMPORARY PAVEMENT MARKING - LINE 4"- PAINT	FOOT	83254	18315	34966	29973	
70300241	TEMPORARY PAVEMENT MARKING - LINE 6"- PAINT	FOOT	701	154	294	253	
70300261	TEMPORARY PAVEMENT MARKING - LINE 12"- PAINT	FOOT	352	77	148	127	
70300281	TEMPORARY PAVEMENT MARKING - LINE 24"- PAINT	FOOT	93	20	39	34	
70306120	TEMPORARY PAVEMENT MARKING - LINE 4" - TYPE III TAPE	FOOT	3740	822	1572	1346	
* 78000100	THERMOPLASTIC PAVEMENT MARKING - LETTERS AND SYMBOLS	SO FT	292.8	64.4	122.9	105.5	
* 78000200	THERMOPLASTIC PAVEMENT MARKING - LINE 4"	FOOT	83254	18315	34966	29973	
* 78000400	THERMOPLASTIC PAVEMENT MARKING - LINE 6"	FOOT	701	154	294	253	
* SPECIALTY ITEM							

SUMMARY OF QUANTITIES			TOTAL QUANTITIES URBAN	CONSTRUCTION TYPE CODE				SUMMARY OF QUANTITIES			TOTAL QUANTITIES URBAN	CONSTRUCTION TYPE CODE			
CODE NO	ITEM	UNIT		0005 OVERLAY 80% FED 20% STATE McHenry	0005 OVERLAY 80% FED 20% STATE COOK	0005 OVERLAY 80% FED 20% STATE LAKE	0005 OVERLAY 100% STATE	CODE NO	ITEM	UNIT		0005 OVERLAY 80% FED 20% STATE McHenry	0005 OVERLAY 80% FED 20% STATE COOK	0005 OVERLAY 80% FED 20% STATE LAKE	0005 OVERLAY 100% STATE
* 78000600	THERMOPLASTIC PAVEMENT MARKING - LINE	FOOT	352	77	148	127		Z0030850	TEMPORARY INFORMATION SIGNING	SO FT	51.4	11.3	21.5	18.6	
	12"														
* 78000650	THERMOPLASTIC PAVEMENT MARKING - LINE	FOOT	93	20	39	34		Z0064600	SELECTIVE CLEARING	ACRE	0.6		0.2	0.4	
	24"							X0327611	REMOVE AND REINSTALL BRICK PAVER	SQ FT	10.0			10.0	
								Ø Z0076600	TRAINEES	HOURS	500	500			
* 78100100	RAISED REFLECTIVE PAVEMENT MARKER	EACH	536	118	225	193		Ø Z0076604	TRAINEES - TRAINING PROGRAM GRADUATE	HOURS	500	500			
78300200	RAISED REFLECTIVE PAVEMENT MARKER	EACH	429	94	180	155									
	REMOVAL														
78300202	PAVEMENT MARKING REMOVAL - WATER	SO FT	2778	611	1167	1000									
	BLASTING														
K0029632	WEED CONTROL, NON-SELECTIVE AND	GALLON	6	1.5	2.5	2									
	NON-RESIDUAL														
X0325222	WEED CONTROL, BASAL TREATMENT	GALLON	1	0.25	0.4	0.35									
X2010350	TREE REMOVAL, ACRES (SPECIAL)	ACRE	0.35	0.35											
X2020110	GRADING AND SHAPING SHOULDERS	UNIT	484	106	203	175									
X5537900	STORM SEWERS TO BE CLEANED 15"	FOOT	420				420								
X6700407	ENGINEER'S FIELD OFFICE, TYPE A (D1)	CAL MO	6	2	2	2									
Z0004562	COMBINATION CONCRETE CURB AND GUTTER	FOOT	70			70									
	REMOVAL AND REPLACEMENT														
Z0018500	DRAINAGE STRUCTURES TO BE CLEANED	EACH	20				20	* SPECIALTY ITEM							















MATCHLINE STA. 160+00.00

MATCHLINE STA. 175+00.00

W. COUNTY LINE RD.

160+00 161 162 163 164 165+00 166 167 168 169 170+00 171 172 173 174

PROP. THPL. PVMT. MARKING- 4"  
EDGE LINE, WHITE (TYP.)

PROP. HMA SURFACE REMOVAL - 3 3/4"  
PROP. HMA BINDER COURSE, IL-9.5, N70, 2"  
PROP. POLY. HMA SURFACE COURSE, MIX "E" IL-9.5, N70, 1 3/4"

PROP. THPL. PVMT. MARKING- 4"  
10' LINE, 30' SPACE, YELLOW (TYP.)

PROP. THPL. PVMT. MARKING- 4"  
10' LINE, 30' SPACE, YELLOW (TYP.)



MATCHLINE STA. 175+00.00

MATCHLINE STA. 190+00.00

W. COUNTY LINE RD.

175+00 176 177 178 179 180+00 181 182 183 184 185+00 186 187 188 189

PROP. THPL. PVMT. MARKING- 4"  
EDGE LINE, WHITE (TYP.)

PROP. HMA SURFACE REMOVAL - 3 3/4"  
PROP. HMA BINDER COURSE, IL-9.5, N70, 2"  
PROP. POLY. HMA SURFACE COURSE, MIX "E" IL-9.5, N70, 1 3/4"

PROP. THPL. PVMT. MARKING- 4"  
DOUBLE, YELLOW (TYP.)

RIDGE RD.

\* McHENRY, COOK & LAKE

USER NAME = abebawa	DESIGNED -	REVISED -
	DRAWN -	REVISED -
PLOT SCALE = 100,0000' / in.	CHECKED -	REVISED -
PLOT DATE = 2/1/2022	DATE -	REVISED -

STATE OF ILLINOIS  
DEPARTMENT OF TRANSPORTATION

ROADWAY PLAN  
LAKE-COOK RD (E. OF HAEGERS BEND RD. TO HART RD)

SCALE: 1"=50' SHEET 6 OF 11 SHEETS STA. 160+00.00 TO STA. 190+00.00

F.A.U. RTE.	SECTION	COUNTY	TOTAL SHEETS	SHEET NO.
1270	2021-116-RS	*	30	11
CONTRACT NO. 62P47			ILLINOIS FED. AID PROJECT	

MODEL: Default  
FILE: Ababaw\_Plan\_Surfaces.dwg  
PROJECT: I:\Projects\116\116-RS\116-RS-116-RS.dwg  
DATE: 2/1/2022



MATCHLINE STA. 190+00.00

W. COUNTY LINE RD.

MATCHLINE STA. 205+00.00

190+00 191 192 193 194 195+00 196 197 198 199 200+00 201 202 203 204

PROP. THPL. PVMT. MARKING- 4"  
EDGE LINE, WHITE (TYP.)

PROP. HMA SURFACE REMOVAL - 3 3/4"  
PROP. HMA BINDER COURSE, IL-9.5, N70, 2"  
PROP. POLY. HMA SURFACE COURSE, MIX "E" IL-9.5, N70, 1 3/4"

PROP. THPL. PVMT. MARKING- 4"  
DOUBLE, YELLOW (TYP.)



MATCHLINE STA. 205+00.00

W. COUNTY LINE RD.

STEEPLECHASE RD.

MATCHLINE STA. 220+00.00

205+00 206 207 208 209 210+00 211 212 213 214 215+00 216 217 218 219

PROP. THPL. PVMT. MARKING- 4"  
EDGE LINE, WHITE (TYP.)

PROP. HMA SURFACE REMOVAL - 3 3/4"  
PROP. HMA BINDER COURSE, IL-9.5, N70, 2"  
PROP. POLY. HMA SURFACE COURSE, MIX "E" IL-9.5, N70, 1 3/4"

MODEL: Default  
FILE: abebawa\_pvt\subject-aw-beebawa.com\FW\DOT\Documents\DOT Office\Drawings\11\Project\112052\11\000\Drawings\112052-1-hart-han.dgn

\* MCHENRY, COOK & LAKE

USER NAME = abebawa	DESIGNED -	REVISED -
	DRAWN -	REVISED -
PLOT SCALE = 100,0000 ' / in.	CHECKED -	REVISED -
PLOT DATE = 2/1/2022	DATE -	REVISED -

STATE OF ILLINOIS  
DEPARTMENT OF TRANSPORTATION

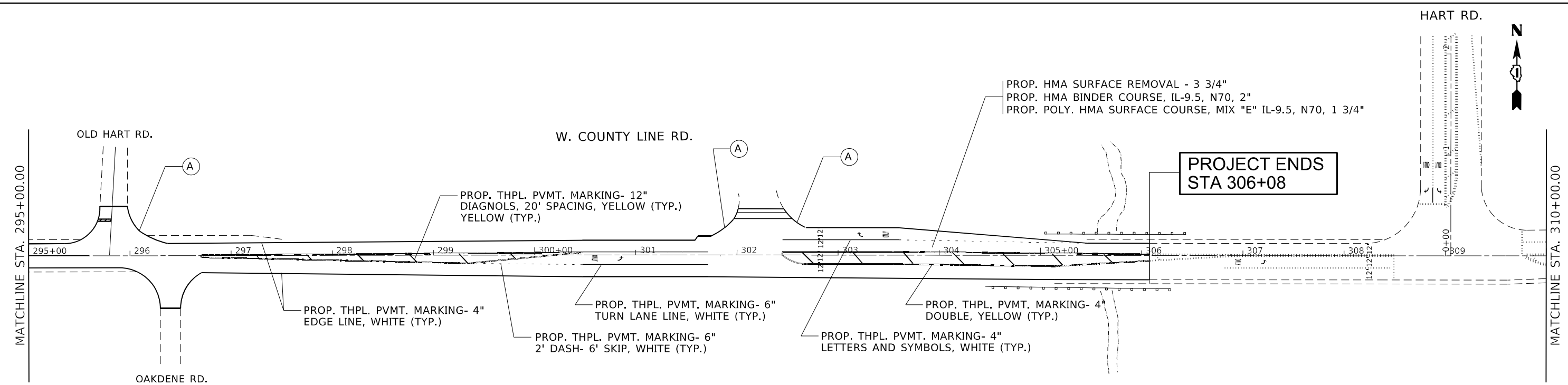
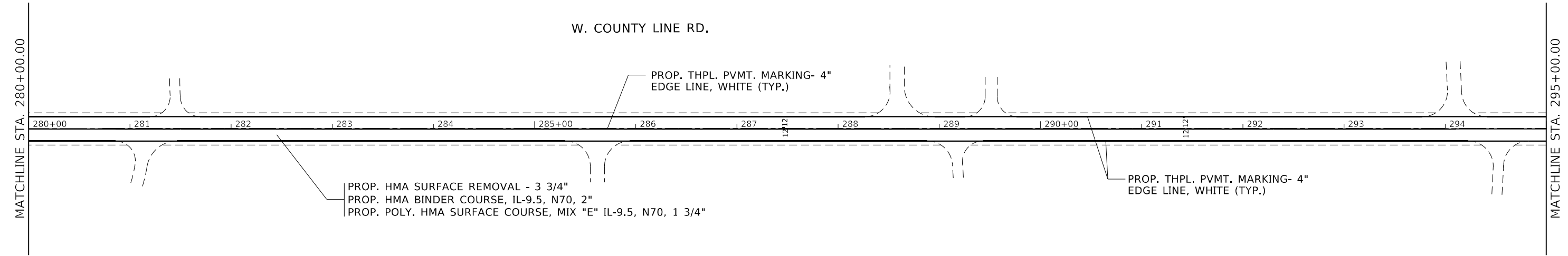
ROADWAY PLAN  
LAKE-COOK RD (E. OF HAEGERS BEND RD. TO HART RD)

SCALE: 1"=50' SHEET 7 OF 11 SHEETS STA. 190+00.00 TO STA. 220+00.00

F.A.U. RTE.	SECTION	COUNTY	TOTAL SHEETS	SHEET NO.
1270	2021-116-RS	*	30	12
CONTRACT NO. 62P47			ILLINOIS FED. AID PROJECT	







A. SINGLE PERPENDICULAR CURB RAMPS (PD-01A)

**PROJECT ENDS  
STA 306+08**

\* MCHENRY, COOK & LAKE

MODEL: Default  
 FILE NAME: p:\illinois\paw\_bentley.com\paw\DOT\Documents\DOT - Offices\Subdistrict - 1\Projects\120521\CD\Drawings\120521-Subdistrict.dgn

USER NAME = abebawa	DESIGNED -	REVISED - 1/3/22 A.A
DRAWN -	REVISIONS -	
PLOT SCALE = 100.1310' / in.	CHECKED -	REVISIONS -
PLOT DATE = 3/9/2022	DATE -	REVISIONS -

**STATE OF ILLINOIS  
DEPARTMENT OF TRANSPORTATION**

**ROADWAY PLAN  
LAKE-COOK RD (E. OF HAEGERS BEND RD. TO HART RD)**  
 SCALE: 1"=50' SHEET 10 OF 11 SHEETS STA. 280+00.00 TO STA. 310+00.00

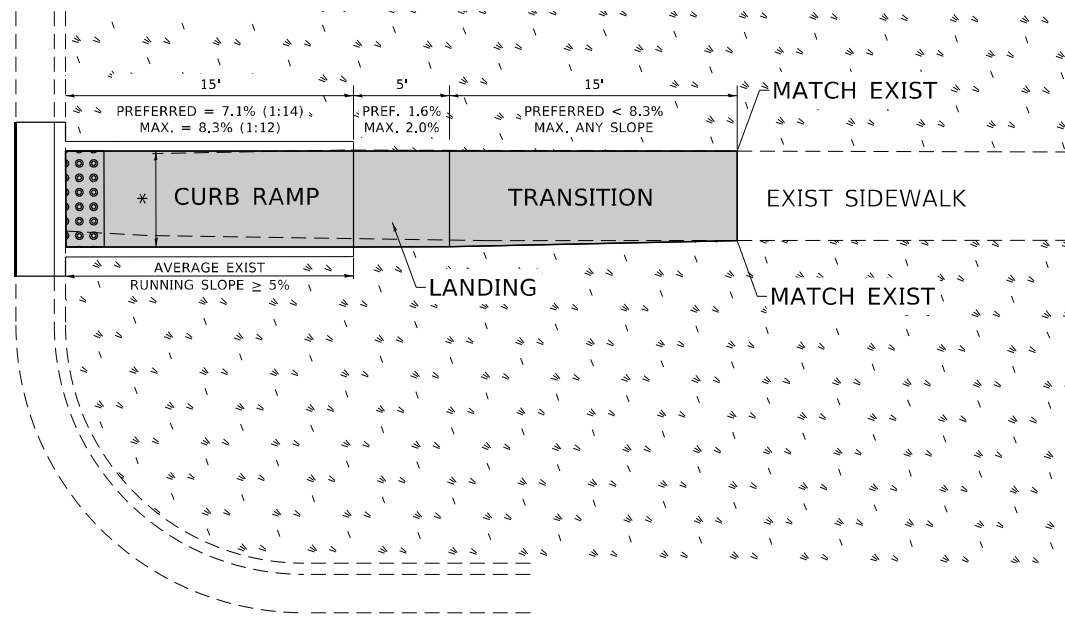
F.A.U. RTE.	SECTION	COUNTY	TOTAL SHEETS	SHEET NO.
1270	2021-116-R5	*	30	15
CONTRACT NO. 62P47			ILLINOIS FED. AID PROJECT	



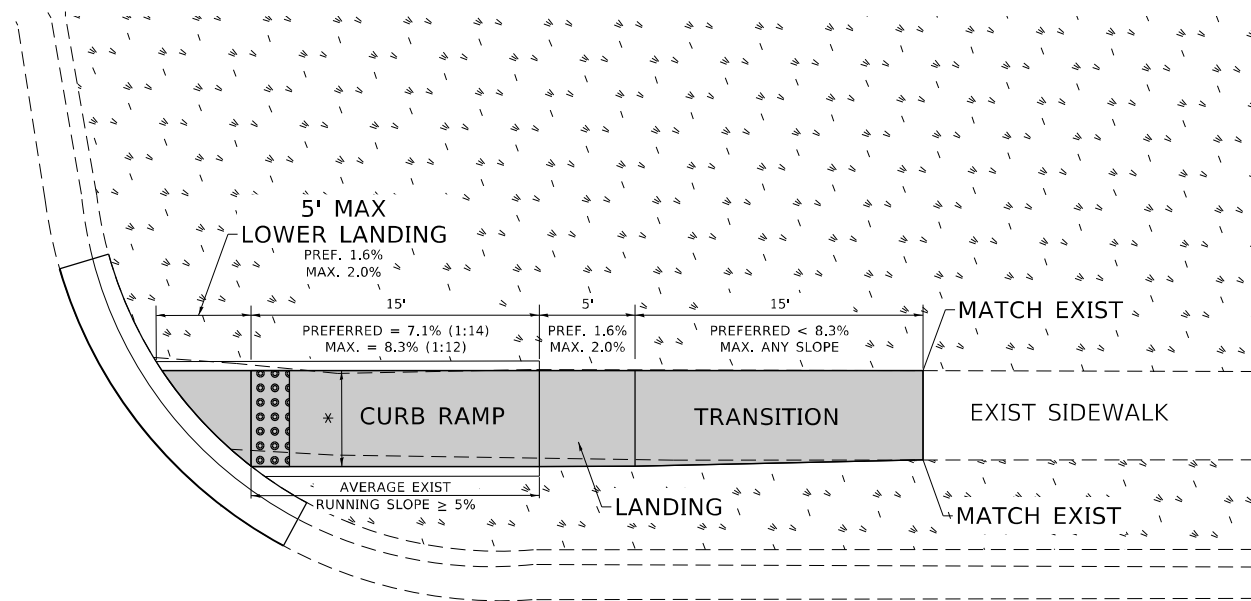


# ADA DETAIL FOR SINGLE PERPENDICULAR CURB RAMPS W/ EXIST. 5% OR GREATER RUN. SLOPE

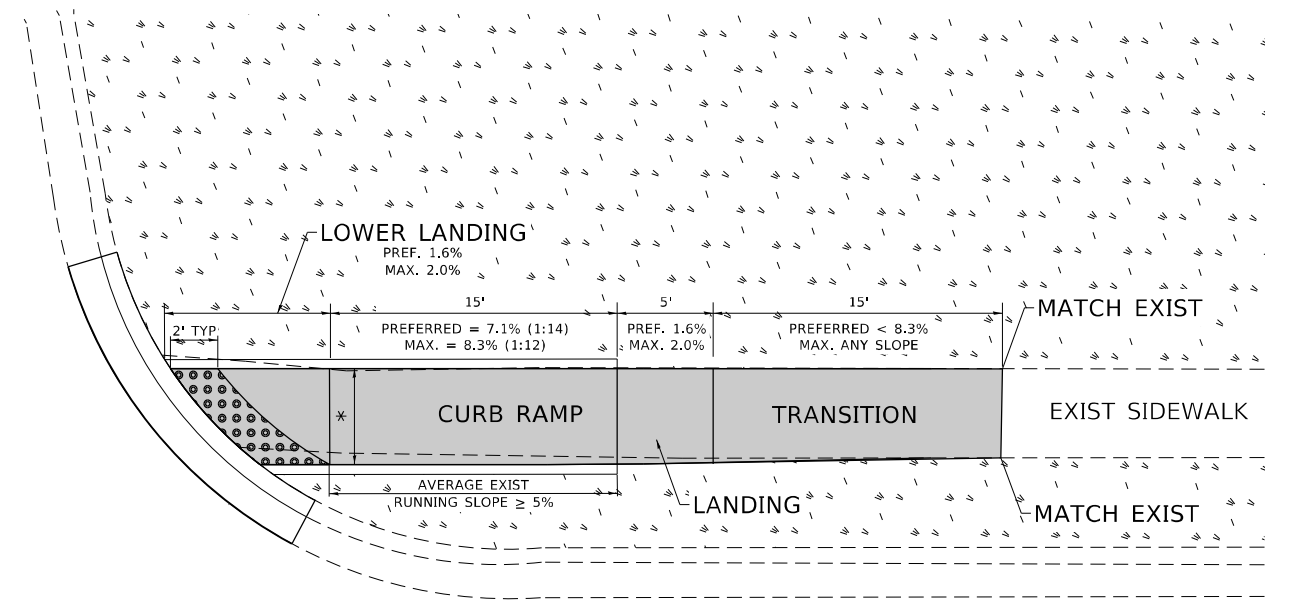
**PD-02A**



**PD-02B**



**PD-02C**



**LEGEND**

- EXIST. GRASS
- PROPOSED SIDEWALK
- DETECTABLE WARNINGS
- PROPOSED SIDE CURB

**CONSTRUCTION NOTES:**

- 1) ALL CROSS SLOPES ARE PREFERRED 1.6% (1:64), MAXIMUM 2% (1:50) EXCEPT WHEN TRANSITIONING TO EXISTING SIDEWALK
- \* MATCH EXISTING SIDEWALK WIDTH

\* McHENRY, COOK & LAKE

MODEL: Default  
FILE NAME: \\sldetaw.bentley.com\FW\DOT\Documents\DOT Office\District: \\Project\12082\ICAD\DATA\Design\BRTS\Edm

USER NAME = abebawa	DESIGNED -	REVISED -
PLOT SCALE = 100,0000' / in.	DRAWN - R. LEDEZMA	REVISED -
PLOT DATE = 2/1/2022	CHECKED -	REVISED -
	DATE - 10/02/2019	REVISED -

**STATE OF ILLINOIS  
DEPARTMENT OF TRANSPORTATION**

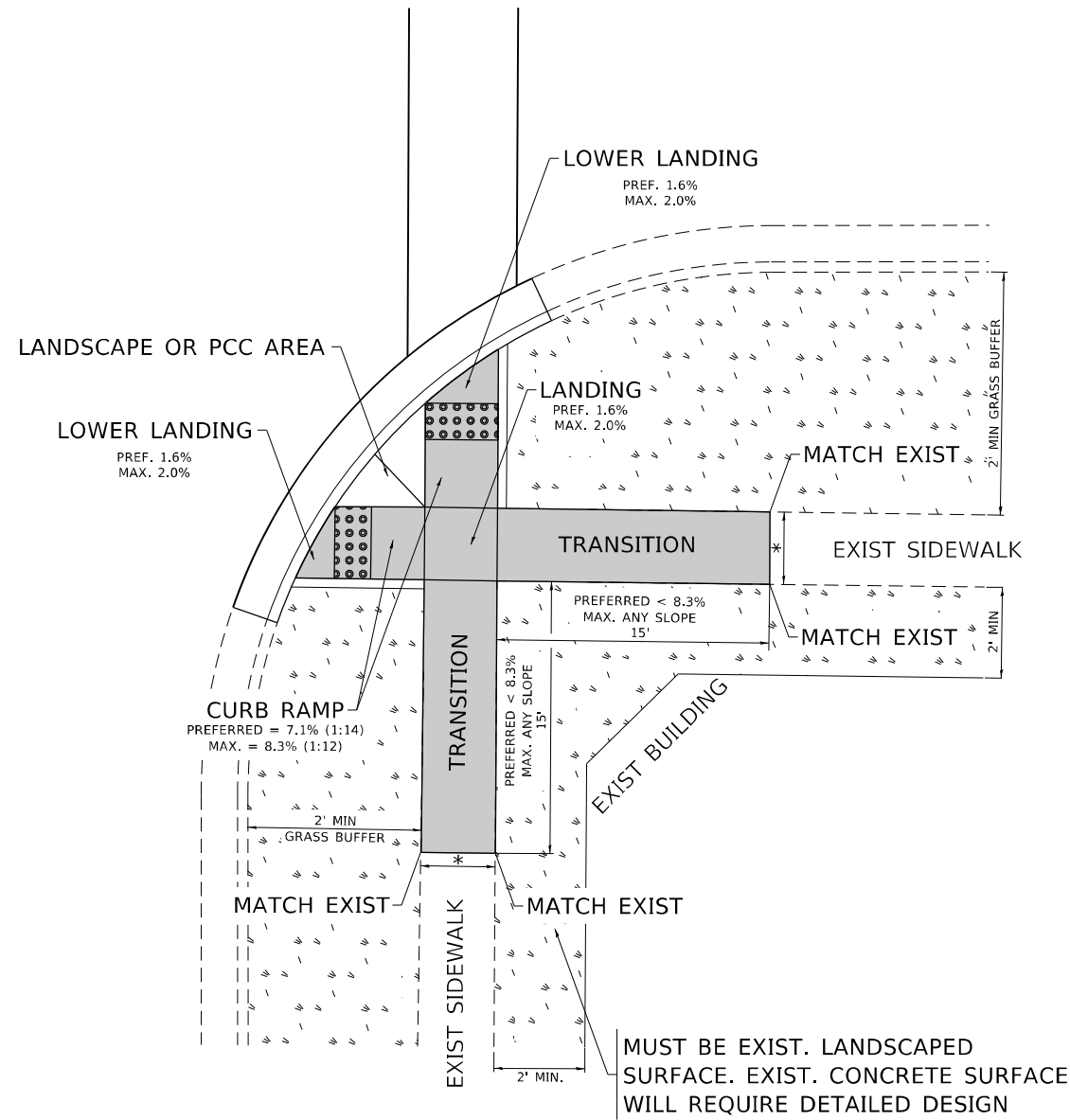
**PROJECT DETAIL FOR SINGLE PERPENDICULAR CURB RAMPS  
(PD-02)**

SCALE: NONE SHEET OF SHEETS STA. TO STA.

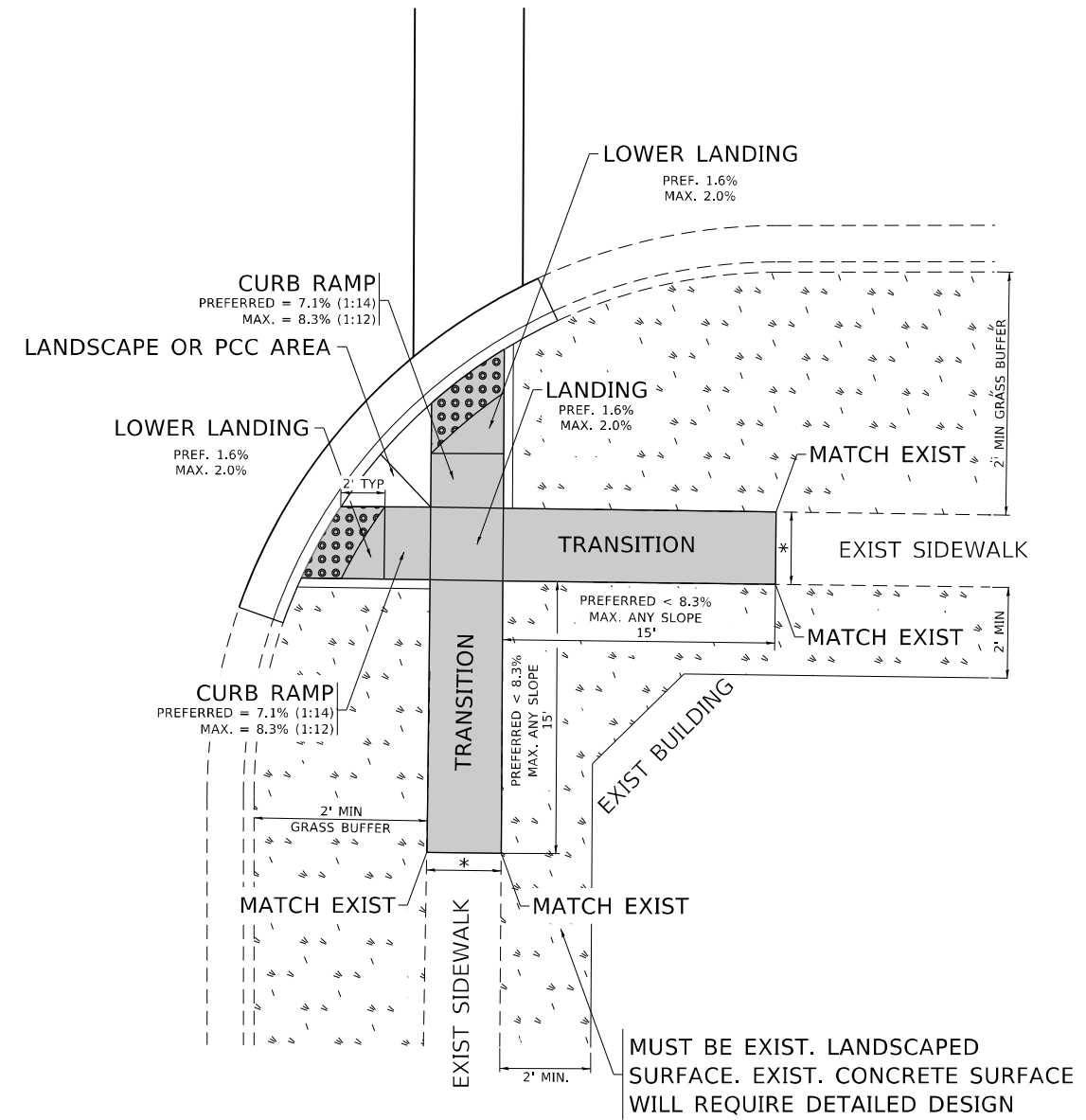
F.A.U. RTE.	SECTION	COUNTY	TOTAL SHEETS	SHEET NO.
1270	2021-116-R5	*	30	17
PD-02		CONTRACT NO. 62P47		
ILLINOIS FED. AID PROJECT				

# ADA DETAIL FOR DOUBLE PERPENDICULAR CURB RAMPS

**PD-03A**



**PD-03B**



**LEGEND**

- EXIST. GRASS
- PROPOSED SIDE CURB
- PROPOSED SIDEWALK
- DETECTABLE WARNINGS

**CONSTRUCTION NOTES:**

- 1) ALL CROSS SLOPES ARE PREFERRED 1.6% (1:64), MAXIMUM 2% (1:50) EXCEPT WHEN TRANSITIONING TO EXISTING SIDEWALK
- \* MATCH EXISTING SIDEWALK WIDTH

\* McHENRY, COOK & LAKE

MODEL: Default  
FILE: h:\mhc\p\project-cw-beadley.com\PIV\DOT\Documents\DOT Office\District 1\Project\12082\12082\12082\12082\Design\BRTStn.dgn

USER NAME = abebawa	DESIGNED -	REVISED -
	DRAWN - R. LEDEZMA	REVISED -
PLOT SCALE = 100,0000' / in.	CHECKED -	REVISED -
PLOT DATE = 2/1/2022	DATE - 10/02/2019	REVISED -

**STATE OF ILLINOIS  
DEPARTMENT OF TRANSPORTATION**

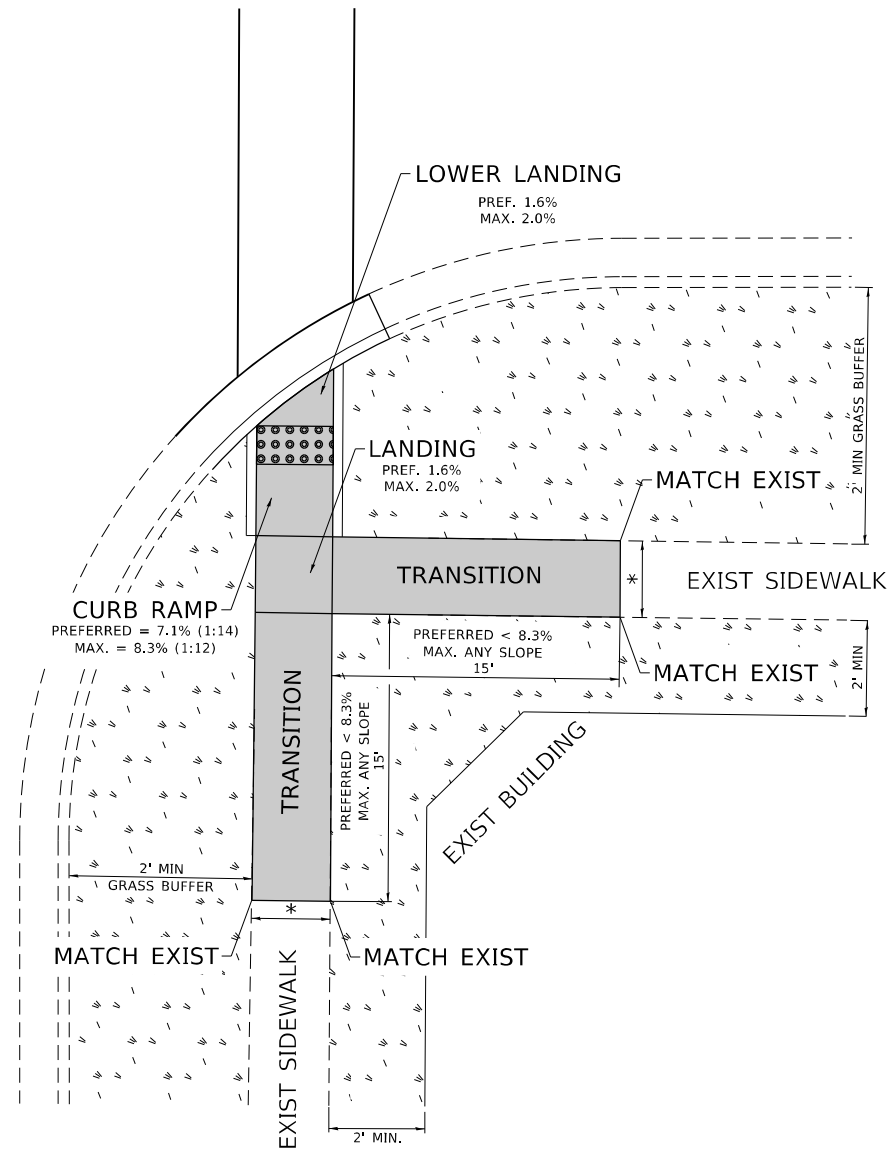
**PROJECT DETAIL FOR DOUBLE PERPENDICULAR CURB RAMPS  
(PD-03)**

SCALE: NONE    SHEET    OF    SHEETS    STA.    TO STA.

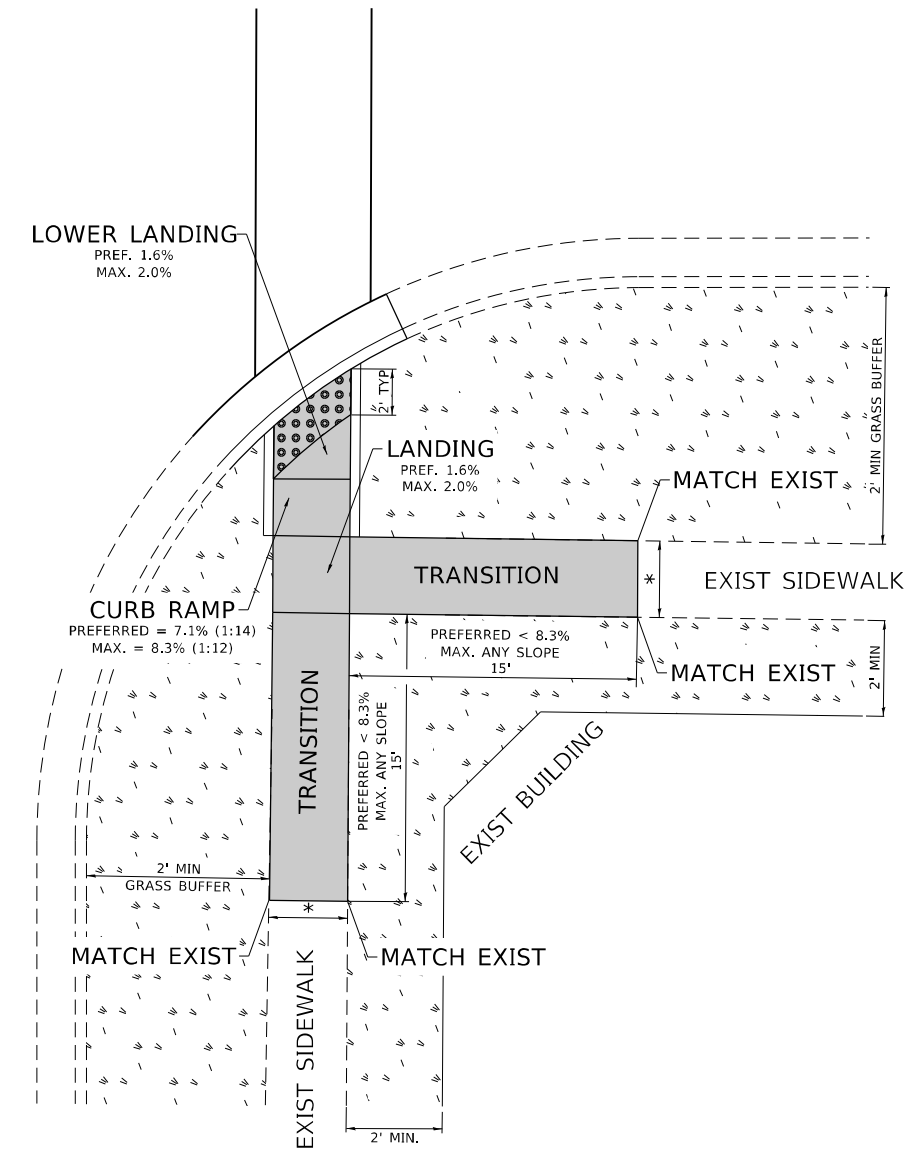
F.A.U. RTE.	SECTION	COUNTY	TOTAL SHEETS	SHEET NO.
1270	2021-116-R5	*	30	18
PD-03			CONTRACT NO. 62P47	
ILLINOIS FED. AID PROJECT				

# ADA DETAIL FOR SINGLE PERPENDICULAR CURB RAMPS W/ TURNING SPACE

**PD-04A**



**PD-04B**



**LEGEND**

- EXIST. GRASS
- PROPOSED SIDEWALK
- DETECTABLE WARNINGS
- PROPOSED SIDE CURB

**CONSTRUCTION NOTES:**

- 1) ALL CROSS SLOPES ARE PREFERRED 1.6% (1:64), MAXIMUM 2% (1:50) EXCEPT WHEN TRANSITIONING TO EXISTING SIDEWALK
- \* MATCH EXISTING SIDEWALK WIDTH

MODEL: Default  
 FILE NAME: p:\project-caw-beadley.com\p\DOT\Documents\DOT Office\Dir\rdet\_1\Project\12082\1\CAD\data\Design\BdFSt.dgn  
 PROJECT ID: 12082

USER NAME = abebawa	DESIGNED -	REVISED -
	DRAWN - R. LEDEZMA	REVISED -
PLOT SCALE = 100,0000' / in.	CHECKED -	REVISED -
PLOT DATE = 2/1/2022	DATE - 10/02/2019	REVISED -

**STATE OF ILLINOIS  
DEPARTMENT OF TRANSPORTATION**

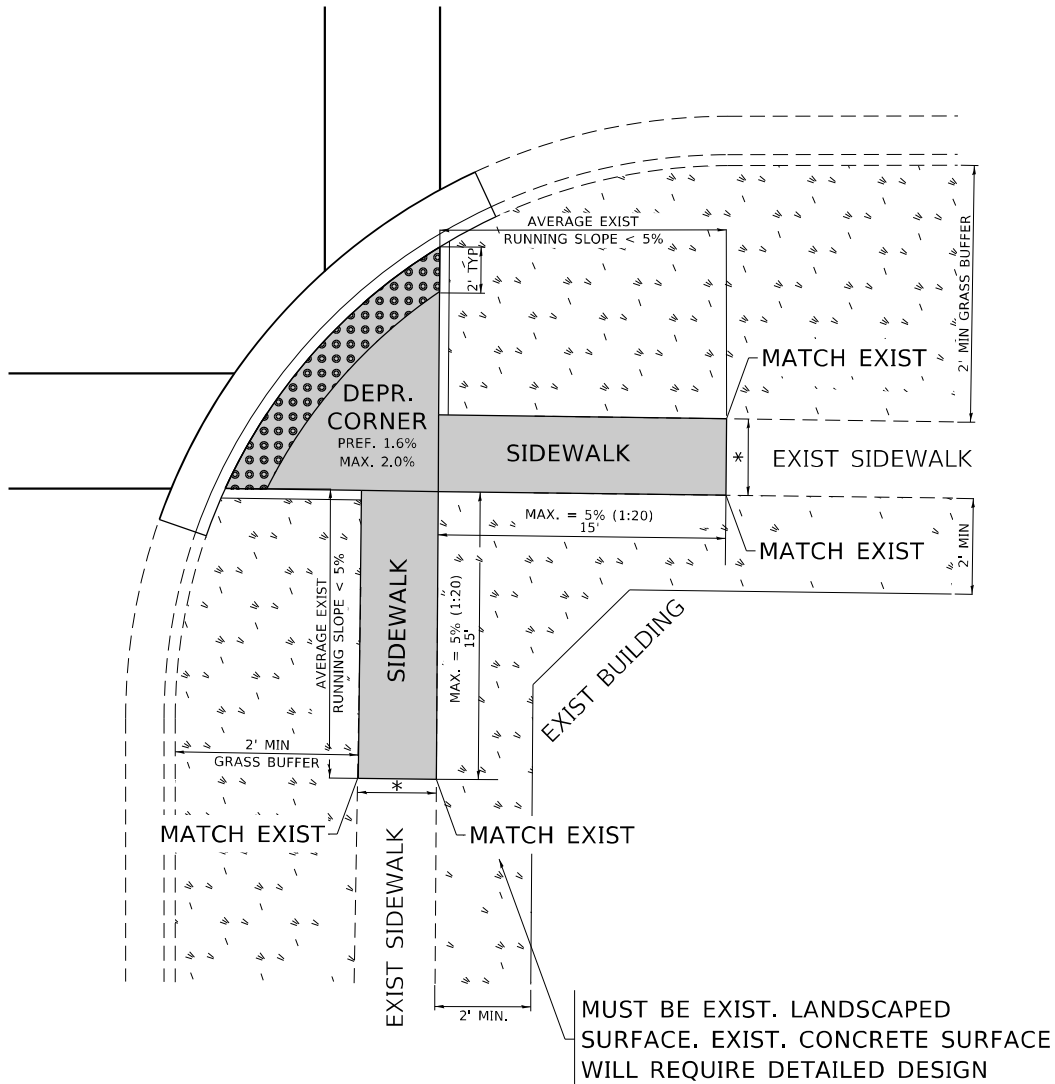
**PROJECT DETAIL FOR SINGLE PERPENDICULAR CURB RAMPS WITH  
TURNING SPACE (PD-04)**

SCALE: NONE    SHEET    OF    SHEETS    STA.    TO STA.

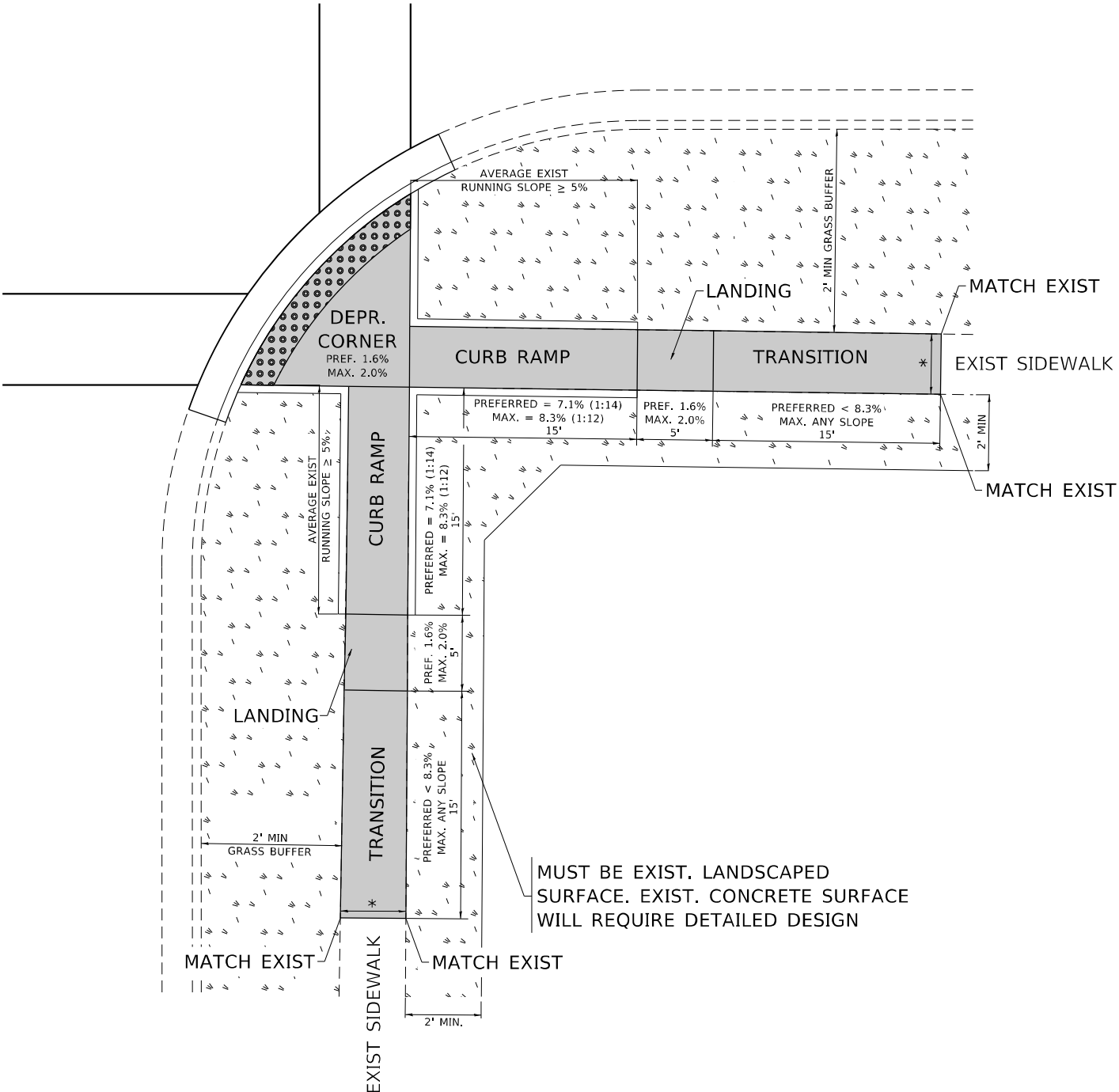
F.A.U. RTE.	SECTION	COUNTY	TOTAL SHEETS	SHEET NO.
1270	2021-116-R5	*	30	19
PD-04		CONTRACT NO. 62P47		
ILLINOIS FED. AID PROJECT				

# ADA DETAIL FOR DEPRESSED CORNER CURB RAMPS

**PD-05A**



**PD-05B**



**LEGEND**

- PROPOSED SIDE CURB
- EXIST. GRASS
- PROPOSED SIDEWALK
- DETECTABLE WARNINGS

**CONSTRUCTION NOTES:**

- 1) ALL CROSS SLOPES ARE PREFERRED 1.6% (1:64), MAXIMUM 2% (1:50) EXCEPT WHEN TRANSITIONING TO EXISTING SIDEWALK
- \* MATCH EXISTING SIDEWALK WIDTH

MODEL: Default  
 FILE: \bldg\paw\beadefay.com\PIV\DOT\Documents\DOT Office\Dir\rdet\_1\Project\12052\1\CAD\data\Design\BdF5Std.dgn

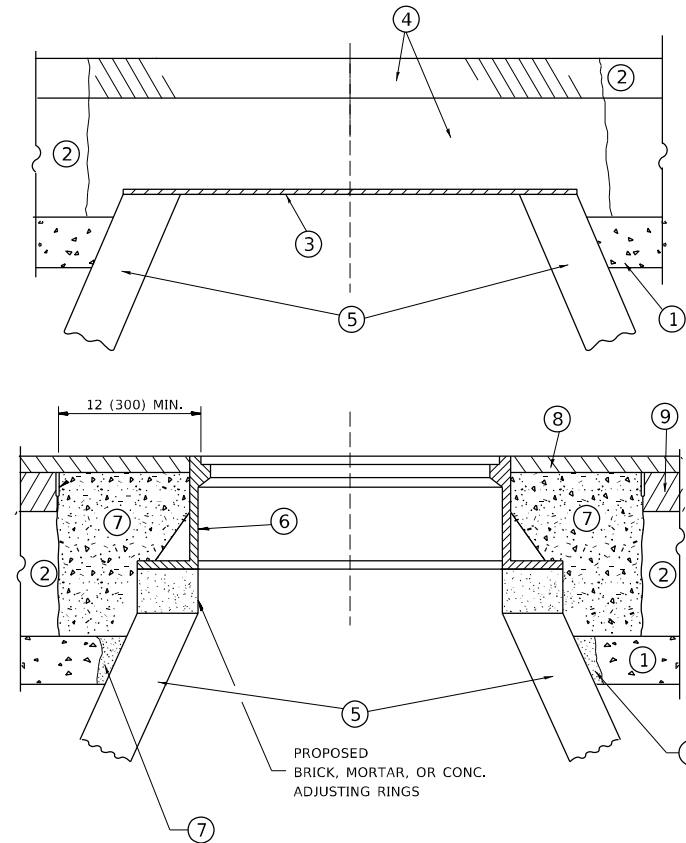
USER NAME = abebawa	DESIGNED -	REVISED -
DRAWN - R. LEDEZMA	REVISIONS -	
PLOT SCALE = 100,0000' / in.	CHECKED -	REVISIONS -
PLOT DATE = 2/1/2022	DATE - 10/02/2019	REVISIONS -

**STATE OF ILLINOIS  
DEPARTMENT OF TRANSPORTATION**

**PROJECT DETAIL FOR DEPRESSED CORNER CURB RAMPS  
(PD-05)**

SCALE: NONE    SHEET    OF    SHEETS    STA.    TO STA.

F.A.U. RTE.	SECTION	COUNTY	TOTAL SHEETS	SHEET NO.
1270	2021-116-RS	*	30	20
PD-05		CONTRACT NO. 62P47		
ILLINOIS		FED. AID PROJECT		



**CONSTRUCTION PROCEDURES**

**STAGE 1 (BEFORE PAVEMENT MILLING)**

- A) REMOVE A MINIMUM OF 12 (300) OF THE PAVEMENT FROM AROUND THE STRUCTURE.
- B) REMOVE THE EXISTING FRAME AND LID FROM THE STRUCTURE.
- C) COVER THE STRUCTURE OPENING WITH A 36 (900) DIAMETER METAL PLATE.
- D) BACKFILL WITH CRUSHED STONE AND A MINIMUM 1½ (40) THICK HMA SURFACE MIX APPROVED BY THE ENGINEER.

**STAGE 2 (AFTER PAVEMENT MILLING)**

- A) REMOVE THE HMA SURFACE MIX AND CRUSHED STONE.
- B) INSTALL THE FRAME AND LID; ADJUST THE FRAME TO ITS FINAL SURFACE ELEVATION.
- C) THE SURROUNDING SPACE SHALL BE FILLED WITH CLASS PP-1 \* CONCRETE TO THE ELEVATION OF THE SURFACE OF THE EXISTING BASE COURSE OR THE BINDER COURSE.

\* UNLESS OTHERWISE SPECIFIED IN THE PLANS.

THE PROCEDURE EXPLAINED ABOVE SHALL CONFORM TO THE APPLICABLE PORTIONS OF SECTIONS 353, 406, 602, AND 603 OF THE STANDARD SPECIFICATIONS EXCEPT THAT "THE CONTRACTOR SHALL ADJUST THE STRUCTURES TO THE FINISHED PAVEMENT ELEVATION NO MORE THAN 5 CALENDAR DAYS PRIOR TO PLACEMENT OF THE FINAL LIFT OF SURFACE UNLESS APPROVED BY THE ENGINEER."

**LEGEND**

- ① SUB-BASE GRANULAR MATERIAL
- ② EXISTING PAVEMENT
- ③ 36 (900) DIAMETER METAL PLATE
- ④ PROPOSED CRUSHED STONE AND HMA SURFACE MIX
- ⑤ EXISTING STRUCTURE
- ⑥ FRAME AND LID (SEE NOTES)
- ⑦ CLASS PP-1 \*CONCRETE
- ⑧ PROPOSED HMA SURFACE COURSE
- ⑨ PROPOSED HMA BINDER COURSE

**LOCATION OF STRUCTURES**

THE CONTRACTOR WILL BE REQUIRED TO KEEP A RECORD OF THE LOCATIONS OF THE BURIED STRUCTURES ACCORDING TO THE STATION AND DISTANCE LEFT OR RIGHT OF THE CENTERLINE OF PAVEMENT. UPON COMPLETION OF THE WORK, THE CONTRACTOR WILL DELIVER THE RECORD TO THE ENGINEER.

**BASIS OF PAYMENT**

REMOVING FRAMES AND LIDS ON DRAINAGE AND UTILITY STRUCTURES IN THE PAVEMENT PRIOR TO MILLING, AND ADJUSTING TO FINAL GRADE PRIOR TO PLACING THE SURFACE COURSE, WILL BE PAID FOR AT THE CONTRACT UNIT PRICE EACH FOR "FRAMES AND LIDS TO BE ADJUSTED (SPECIAL)."

THIS WORK WILL NOT BE PAID FOR WHEN DRAINAGE AND UTILITY STRUCTURES ARE SPECIFIED FOR PAYMENT AS STRUCTURE RECONSTRUCTION.

NEW FRAMES AND LIDS, WHEN SPECIFIED, WILL BE PAID FOR SEPARATELY.

**NOTES**

EXISTING BROKEN FRAMES AND LIDS SHALL BE REMOVED AND DISPOSED OF BY THE CONTRACTOR AND SHALL BE REPLACED AS DIRECTED BY THE ENGINEER. REPLACEMENT FRAMES AND LIDS WILL BE PAID FOR IN ACCORDANCE WITH ARTICLE 109.04 OF THE STANDARD SPECIFICATIONS UNLESS A SEPARATE PAY ITEM HAS BEEN PROVIDED.

IF THE EXISTING LIDS ARE OPEN, THE FRAME WILL BE ADJUSTED TO THE ELEVATION OF THE MILLED PAVEMENT SURFACE PRIOR TO THE MILLING OPERATION. THE FRAME WILL NOT BE REMOVED AND COVERED BY THE METAL PLATE.

CITY OF CHICAGO CASTINGS ARE THE PROPERTY OF THE CITY AND THE CONTRACTOR SHALL NOTIFY THE CITY FOR REMOVAL AND DISPOSITION OF THE CASTINGS.

THE METAL PLATE USED TO COVER THE STRUCTURE SHALL REMAIN THE PROPERTY OF THE CONTRACTOR.

WHEN STRUCTURES ARE TO BE ADJUSTED OR RECONSTRUCTED, THE LOWERING AND RAISING OF THE FRAMES AND LIDS WILL NOT BE PAID FOR SEPARATELY BUT WILL BE INCLUDED IN THE COST OF THE CORRESPONDING PAY ITEM.

**DETAILS FOR FRAMES AND LIDS ADJUSTMENT WITH MILLING**

\* MCHENRY, COOK & LAKE

ALL DIMENSIONS ARE IN INCHES (MILLIMETERS) UNLESS OTHERWISE SHOWN

MODEL: Default  
FILE NAME: p:\ultra\paw\_bentley.com\PIV\DOT\Documents\DOT Office\Dir\rdet\_1\Project\12082\1\CAD\data\Design\BdFSt.dgn

USER NAME = abebawa	DESIGNED - R. SHAH	REVISED - R. WEDEMAN 05-14-04
	DRAWN -	REVISED - R. BORO 01-01-07
PLOT SCALE = 100,0000' / in.	CHECKED -	REVISED - R. BORO 03-09-11
PLOT DATE = 2/1/2022	DATE - 10-25-94	REVISED - R. BORO 12-06-11

STATE OF ILLINOIS  
DEPARTMENT OF TRANSPORTATION

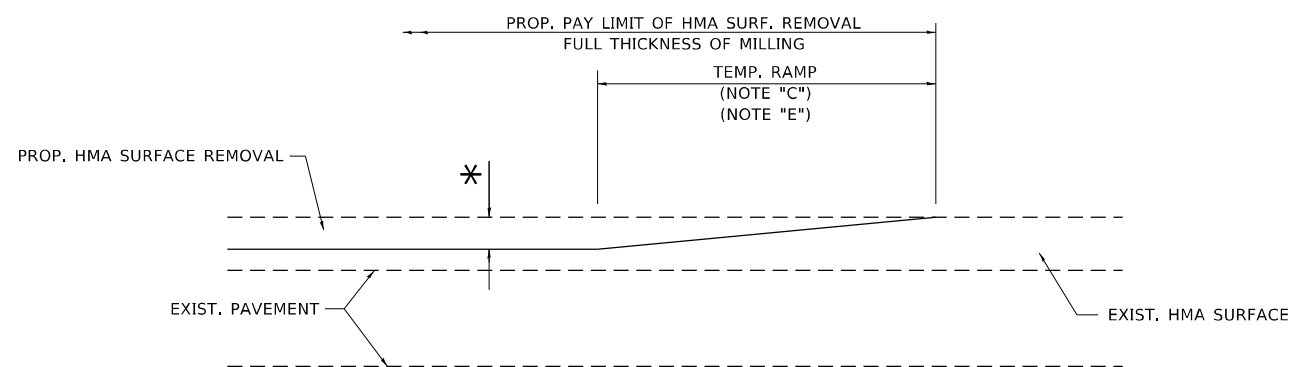
DETAILS FOR  
FRAMES AND LIDS ADJUSTMENT WITH MILLING

SCALE: NONE SHEET 1 OF 1 SHEETS STA. TO STA.

F.A.U. RTE.	SECTION	COUNTY	TOTAL SHEETS	SHEET NO.
1270	2021-116-R5	*	30	21
BD600-03 (BD-8)		CONTRACT NO. 62P47		
ILLINOIS		FED. AID PROJECT		



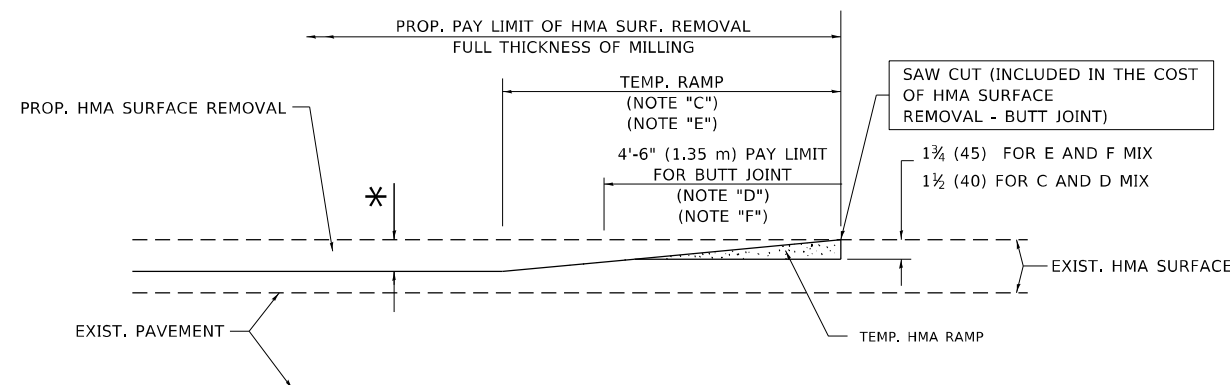




**MILLED TEMPORARY RAMP**

(FOR BUTT JOINT AND HMA TAPER SEE DETAIL BELOW)

**OPTION 1**

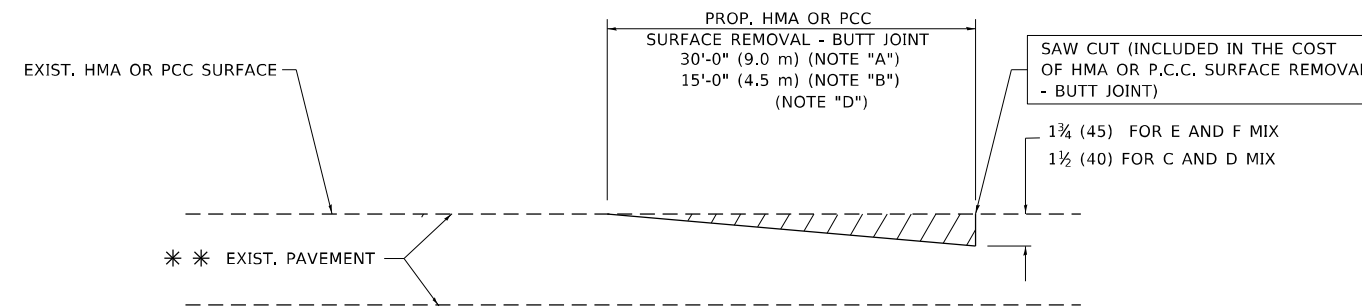


**HMA CONSTRUCTED TEMPORARY RAMP**

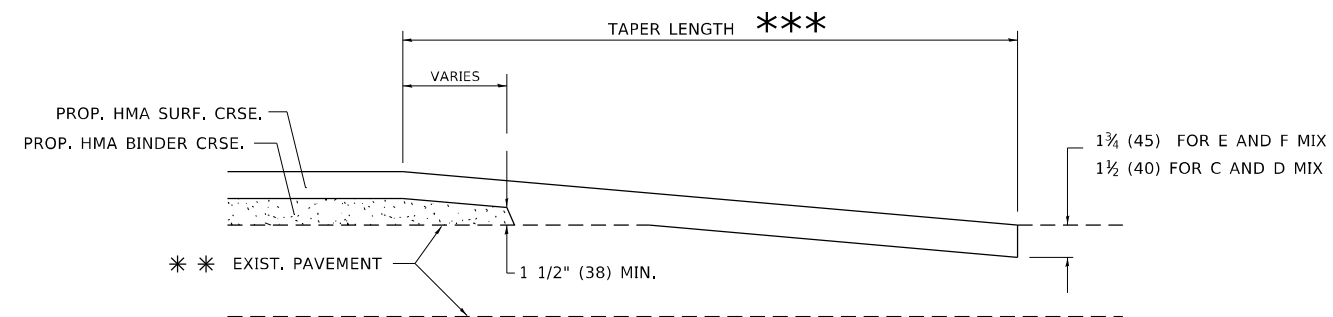
(FOR BUTT JOINT AND HMA TAPER SEE DETAIL BELOW)

**OPTION 2**

**TYPICAL TEMPORARY RAMP**



**BUTT JOINT DETAIL**



**HMA TAPER DETAIL**

**TYPICAL BUTT JOINT AND HMA TAPER FOR RESURFACING ONLY**

\*\*\* PC CONCRETE, HMA OR HMA RESURFACED PAVEMENT.

**NOTES**

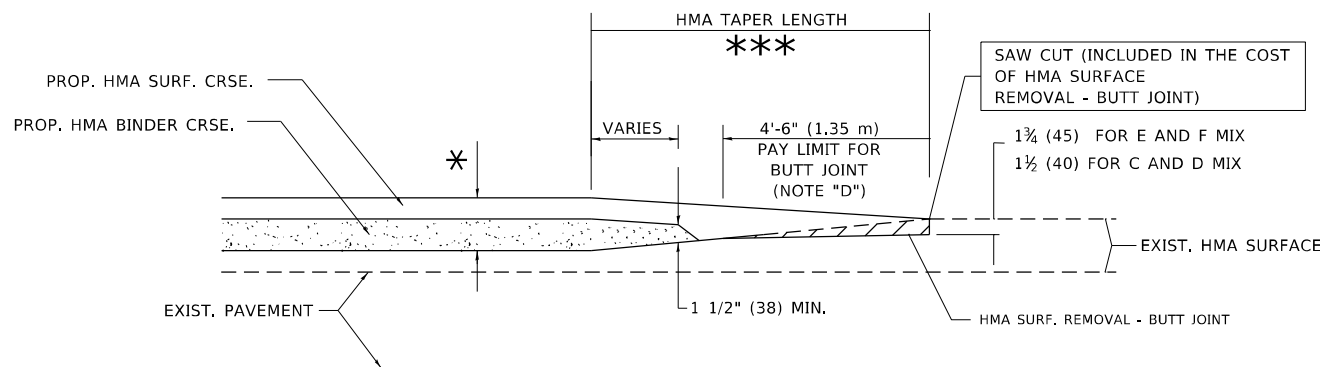
- A. MAINLINE ROADWAYS AND MAJOR SIDE ROADS.
- B. MINOR SIDE ROADS.
- C. THE TEMP. RAMP SHALL BE CONSTRUCTED IMMEDIATELY UPON REMOVAL OF THE EXISTING HMA SURFACE.
- D. THE BUTT JOINT SHALL BE CONSTRUCTED IMMEDIATELY PRIOR TO PLACING THE PROPOSED HMA COURSES.
- E. TAPER THE TEMP. RAMP AT A RATE OF 3'-0" (900 mm) PER 1 INCH (25 mm) OF MILLING THICKNESS.
- F. INSTALLATION AND REMOVAL OF THE 4'-6" (1.35 m) TEMP. RAMP IS INCLUDED IN COST OF HMA SURFACE REMOVAL - BUTT JOINT.  
\* SEE TYPICAL SECTIONS FOR MILLING THICKNESS.
- G. SEE ARTICLE 406.08 AND 406.14 OF THE STANDARD SPECIFICATIONS FOR "HMA AND/OR PCC SURFACE REMOVAL, BUTT JOINT".  
\*\*\* 20'-0" (6.1 m) PER 1 (25) RESURFACING (NOTE "A")  
10'-0" (3.0 m) PER 1 (25) RESURFACING (NOTE "B")

**BASIS OF PAYMENT**

THE BUTT JOINT WILL BE PAID FOR AT THE CONTRACT UNIT PRICE PER SQUARE YARD (SQUARE METER) FOR "HOT-MIX ASPHALT SURFACE REMOVAL - BUTT JOINT" OR FOR "PORTLAND CEMENT CONCRETE SURFACE REMOVAL - BUTT JOINT".

ALL DIMENSIONS ARE IN INCHES (MILLIMETERS) UNLESS OTHERWISE SHOWN.

\* MCHENRY, COOK & LAKE



**BUTT JOINT AND HMA TAPER**

**TYPICAL BUTT JOINT AND HMA TAPER FOR MILLING AND RESURFACING**

MODEL: Defect FILE: NAME: p:\projects\116\116-116-RS\116-116-RS\116-116-RS.dwg PROJECT: 116-116-RS DATE: 06-13-2022

USER NAME = abebawa	DESIGNED - M. DE YONG	REVISED - R. SHAH 10-25-94
PLOT SCALE = 99.9688 ' / in.	CHECKED -	REVISED - A. ABBAS 03-21-97
PLOT DATE = 2/1/2022	DATE - 06-13-90	REVISED - M. GOMEZ 04-06-01
		REVISED - R.BORO 01-01-07

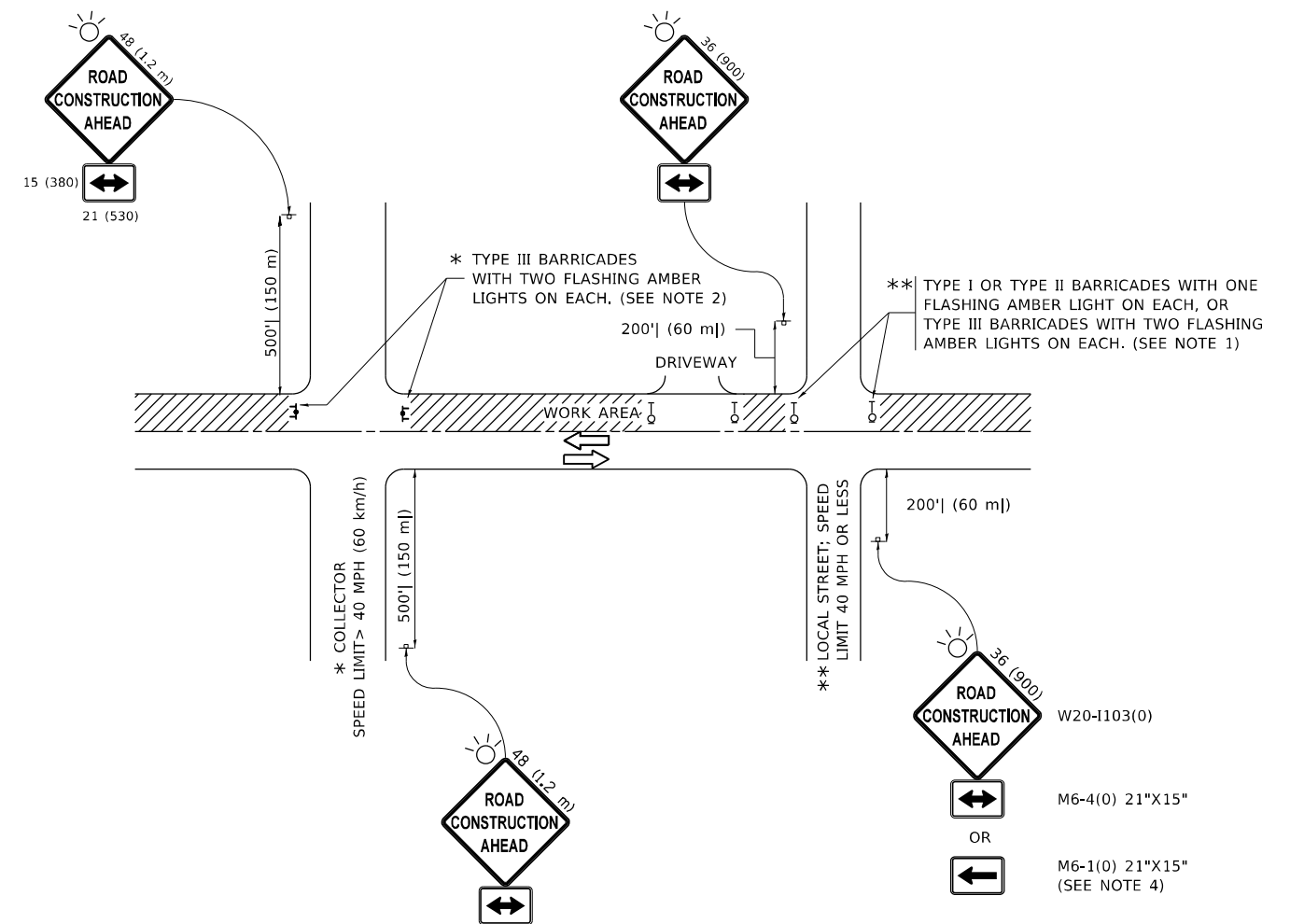
**STATE OF ILLINOIS  
DEPARTMENT OF TRANSPORTATION**

**BUTT JOINT AND  
HMA TAPER DETAILS**

SCALE: NONE SHEET 1 OF 1 SHEETS STA. TO STA.

F.A.U. RTE.	SECTION	COUNTY	TOTAL SHEETS	SHEET NO.
1270	2021-116-R5	*	30	24
<b>BD400-05 BD32</b>		CONTRACT NO. 62P47		
ILLINOIS FED. AID PROJECT				





**NOTES:**

- SIDE ROAD WITH A SPEED LIMIT OF 40 MPH (60 km/h) OR LESS AS SHOWN ON THE DRAWING AND AS DIRECTED BY THE ENGINEER:
  - ONE "ROAD CONSTRUCTION AHEAD" SIGN 36 x 36 (900x900) WITH A FLASHER MOUNTED ON IT APPROXIMATELY 200' (60 m) IN ADVANCE OF THE MAIN ROUTE.
  - THE CLOSED PORTION OF THE MAIN ROUTE SHALL BE PROTECTED BY BLOCKING WITH TYPE I, TYPE II OR TYPE III BARRICADES, 1/3 OF THE CROSS SECTION OF THE CLOSED PORTION.
- SIDE ROAD WITH A SPEED LIMIT GREATER THAN 40 MPH (60 km/h) AS SHOWN ON THE DRAWING AND AS DIRECTED BY THE ENGINEER:
  - ONE "ROAD CONSTRUCTION AHEAD" SIGN 48 x 48 (1.2 m x 1.2 m) WITH A FLASHER MOUNTED ON IT APPROXIMATELY 500' (150 m) IN ADVANCE OF THE MAIN ROUTE.
  - THE CLOSED PORTION OF THE MAIN ROUTE SHALL BE PROTECTED BY BLOCKING WITH TYPE III BARRICADES, 1/2 OF THE CROSS SECTION OF THE CLOSED PORTION.
- CONES MAY BE SUBSTITUTED FOR BARRICADES OR DRUMS AT HALF THE SPACING DURING DAY OPERATIONS. CONES SHALL BE A MINIMUM OF 28 (710) IN HEIGHT.
- SIGNING AND THE WORK ZONE, A SINGLE HEADED ARROW (M6-1) SHALL BE USED IN LIEU OF THE DOUBLE HEADED ARROW (M6-4).
- WHEN THE SIDE ROAD LIES BETWEEN THE BEGINNING OF THE MAINLINE AND THE WORK ZONE, A SINGLE HEADED ARROW (M6-1) SHALL BE USED IN LIEU OF THE DOUBLE HEADED ARROW (M6-4).
- WHEN WORK IS BEING PERFORMED ON A SIDE ROAD OR DRIVEWAY, FOLLOW THE APPLICABLE STANDARD(S). THE DIRECTIONAL ARROW (M6-1 OR M6-4) SHALL BE COVERED OR REMOVED WHEN NO LONGER CONSISTENT WITH THE TRAFFIC CONTROL SET-UP.
- ADVANCE WARNING SIGNS ARE TO BE OMITTED ON DRIVEWAYS UNLESS OTHERWISE SPECIFIED IN THE PLANS OR BY THE ENGINEER.
- THE TRAFFIC CONTROL AND PROTECTION FOR SIDE ROADS, INTERSECTIONS, AND DRIVEWAYS SHALL BE INCLUDED IN THE COST OF SPECIFIED TRAFFIC CONTROL STANDARDS OR ITEMS.

All dimensions are in inches (millimeters) unless otherwise shown.

MODEL: Default  
FILE: MainE\_Plan\_Signet-aw-beadefw.com\FW\DOT\Documents\DOT Office\Dir\rdet\_1\Project\12082\1\CD\00Data\Design\BdEStg.dgn

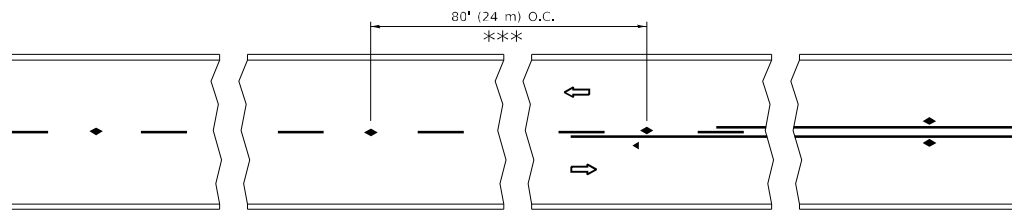
USER NAME = abebawa	DESIGNED - L.H.A.	REVISED - A. HOUSEH 10-15-96
	DRAWN -	REVISED - T. RAMMACHER 01-06-00
PLOT SCALE = 100,0000' / in.	CHECKED -	REVISED - A. SCHUETZE 07-01-13
PLOT DATE = 2/1/2022	DATE - 06-89	REVISED - A. SCHUETZE 09-15-16

**STATE OF ILLINOIS  
DEPARTMENT OF TRANSPORTATION**

**TRAFFIC CONTROL AND PROTECTION FOR  
SIDE ROADS, INTERSECTIONS, AND DRIVEWAYS**

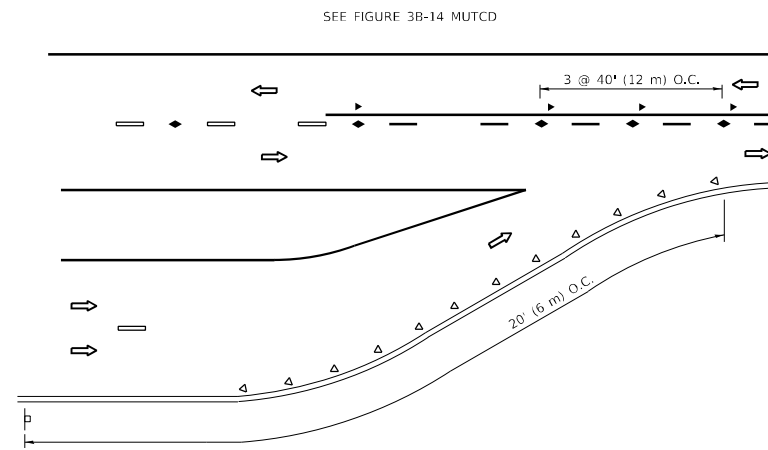
SCALE: NONE SHEET 1 OF 1 SHEETS STA. TO STA.

F.A.U. RTE.	SECTION	COUNTY	TOTAL SHEETS	SHEET NO.
1270	2021-116-RS	*	30	25
<b>TC-10</b>			CONTRACT NO. 62P47	
ILLINOIS FED. AID PROJECT				

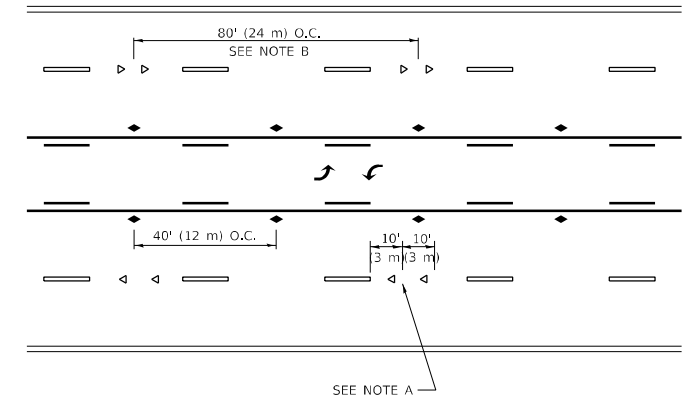


\*\*\* REDUCE TO 40' (12 m) O.C. ON CURVES WITH POSTED OR ADVISORY SPEED 45 M.P.H. (70 km/h) OR LESS.

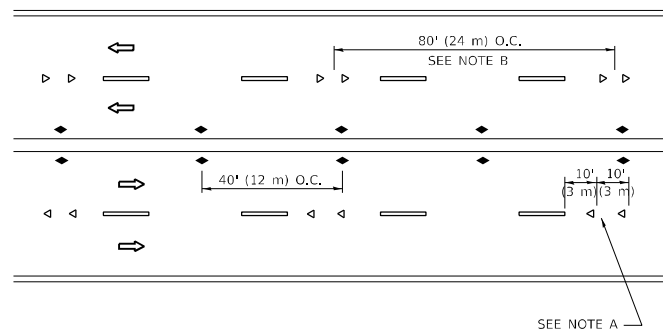
**TWO-LANE/TWO-WAY**



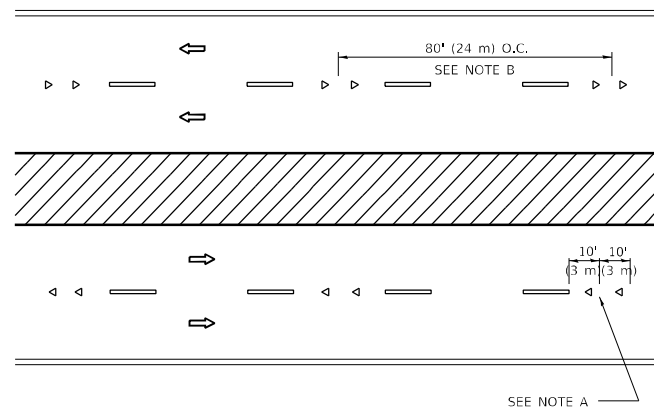
**LANE REDUCTION TRANSITION**



**TWO-WAY LEFT TURN**



**MULTI-LANE/UNDIVIDED**



**MULTI-LANE/DIVIDED**

**GENERAL NOTES**

1. MARKERS USED WITH DASHED LINES SHALL BE CENTERED IN THE GAP BETWEEN SEGMENTS.
2. MARKERS USED ADJACENT TO SOLID LINES SHALL BE OFFSET 2 TO 3 (50 TO 75) TOWARD TRAFFIC AS SHOWN.
3. MARKERS THROUGH TANGENTS LESS THAN 500' (150 m) IN LENGTH BETWEEN CURVES SHALL BE INSTALLED AT THE LESSER OF THE TWO CURVE SPACINGS.
4. MARKERS ARE TO BE USED ADJACENT TO BOTH SOLID WHITE LINES IN DUAL LEFT TURN LANES

**SYMBOLS**

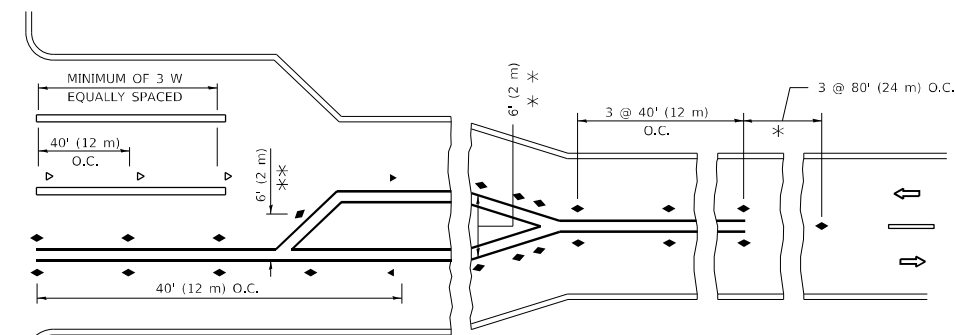
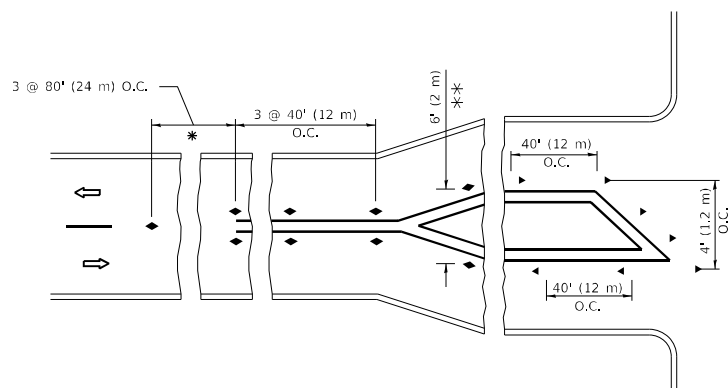
- YELLOW STRIPE
- WHITE STRIPE
- ◀ ONE-WAY AMBER MARKER
- ◀ ONE-WAY CRYSTAL MARKER (W/O)
- ◆ TWO-WAY AMBER MARKER

**LANE MARKER NOTES**

- A. USE DOUBLE LANE LINE MARKERS SPACED AS SHOWN.
- B. REDUCE TO 40' (12 m) O.C. ON CURVES WHERE ADVISORY SPEEDS ARE 10 M.P.H (20 km/h) LOWER THAN POSTED SPEEDS.

**DESIGN NOTES**

1. DOUBLE LANE LINE MARKERS SHALL BE USED UNLESS SPECIFIED OTHERWISE.
2. EXCEPT AS SHOWN ON THE LANE REDUCTION TRANSITION AND FREEWAY EXIT RAMP DETAIL, MARKERS ARE NOT TO BE SPECIFIED ON RIGHT EDGE LINES.
3. THE EXACT MARKER LIMITS, SPACING, AND COLOR SHALL BE INCLUDED IN THE PLANS WHEN STANDARD SPECIFICATIONS ARE NOT BEING USED.
4. MARKERS SHOULD NOT BE USED ALONGSIDE CURBS EXCEPT FOR EXTREMELY SHORT SECTIONS OF CURBS WHERE NOT MORE THAN TWO MARKERS WOULD BE INVOLVED.



**TURN LANES**

\* SEE TWO-LANE/TWO-WAY WHERE MARKERS CONTINUE  
 \*\* WHERE THE MEDIAN WIDTH IS 6' (2 m) OR LESS USE TWO-WAY MARKERS.

All dimensions are in inches (millimeters) unless otherwise shown.

MODEL: Default  
 FILE: \\blmfc-pw-bentley.com\FW\DOT\Documents\DOT Office\Dir\rdet\_1\Project\12052\ICAD\DrawData\Design\BdfStd.dgn

USER NAME = abebawa	DESIGNED -	REVISED - T. RAMMACHER 03-12-99
PLOT SCALE = 100,0000 ' / in.	DRAWN -	REVISED - T. RAMMACHER 01-06-00
PLOT DATE = 2/1/2022	CHECKED -	REVISED - C. JUCIUS 09-09-09
	DATE -	REVISED - C. JUCIUS 07-01-13

**STATE OF ILLINOIS  
 DEPARTMENT OF TRANSPORTATION**

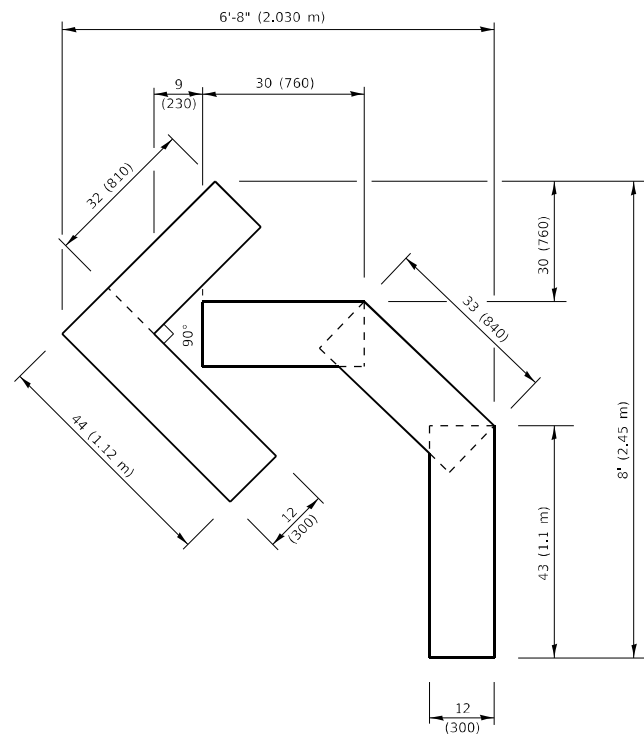
**TYPICAL APPLICATIONS  
 RAISED REFLECTIVE PAVEMENT MARKERS (SNOW-PLOW RESISTANT)**

SCALE: NONE SHEET 1 OF 1 SHEETS STA. TO STA.

F.A.U. RTE.	SECTION	COUNTY	TOTAL SHEETS	SHEET NO.
1270	2021-116-R5	*	30	26
TC-11		CONTRACT NO. 62P47		
ILLINOIS		FED. AID PROJECT		

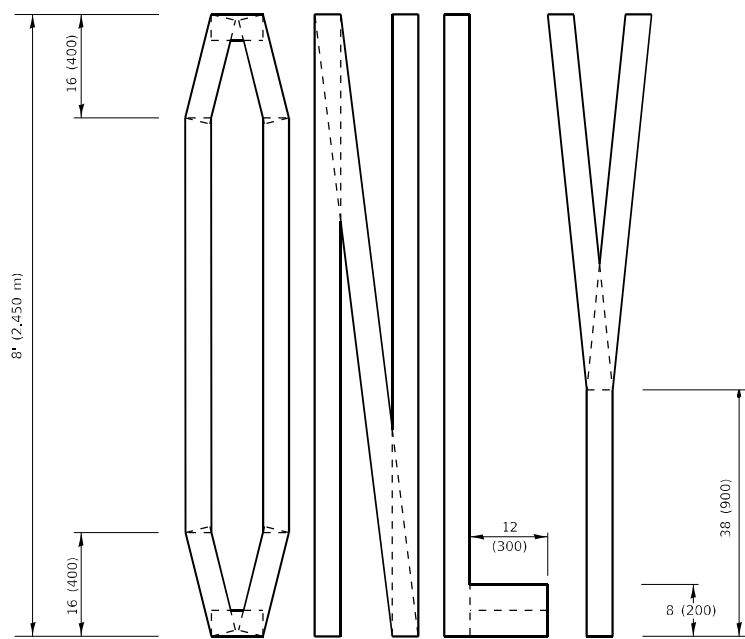
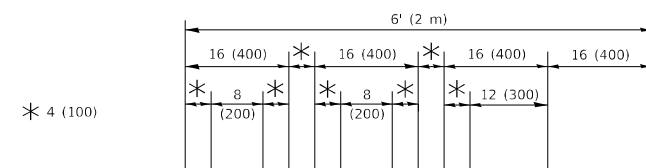






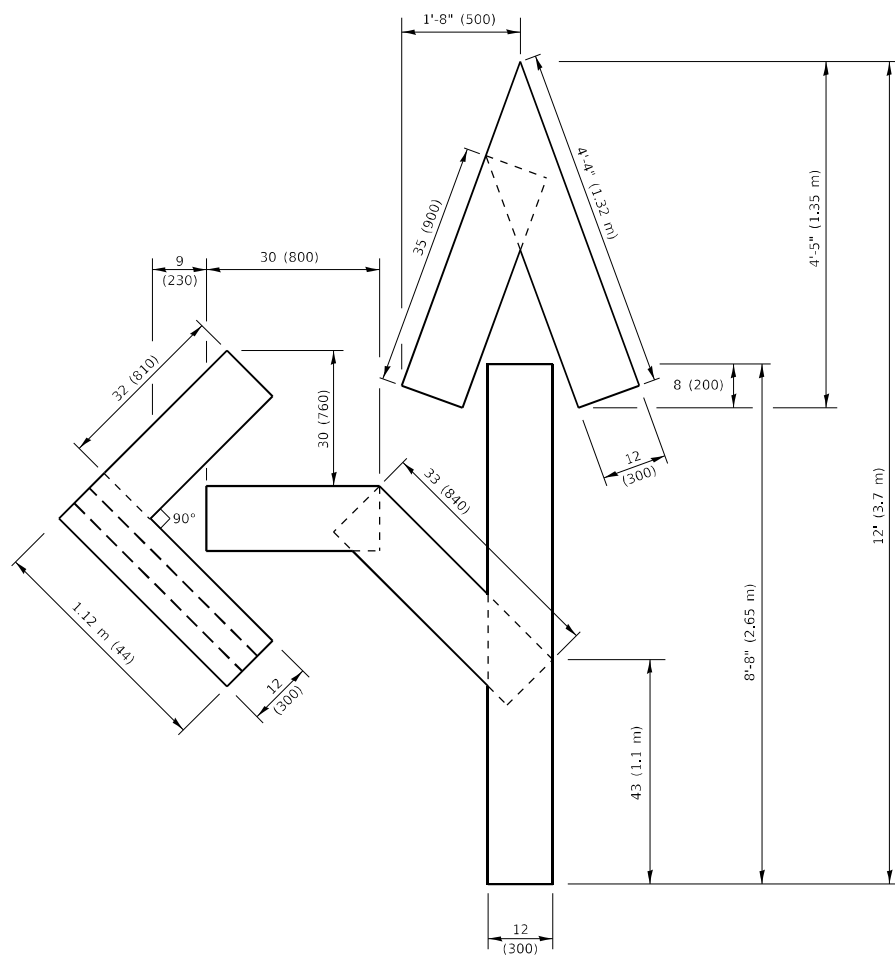
**QUANTITY**

4 (100) LINE = 45.5 ft. (13.9 m)  
15.2 sq. ft. (1.41 sq. m)



**QUANTITY**

4 (100) LINE = 64.1 ft. (19.5 m)  
21.4 sq. ft. (1.99 sq. m)

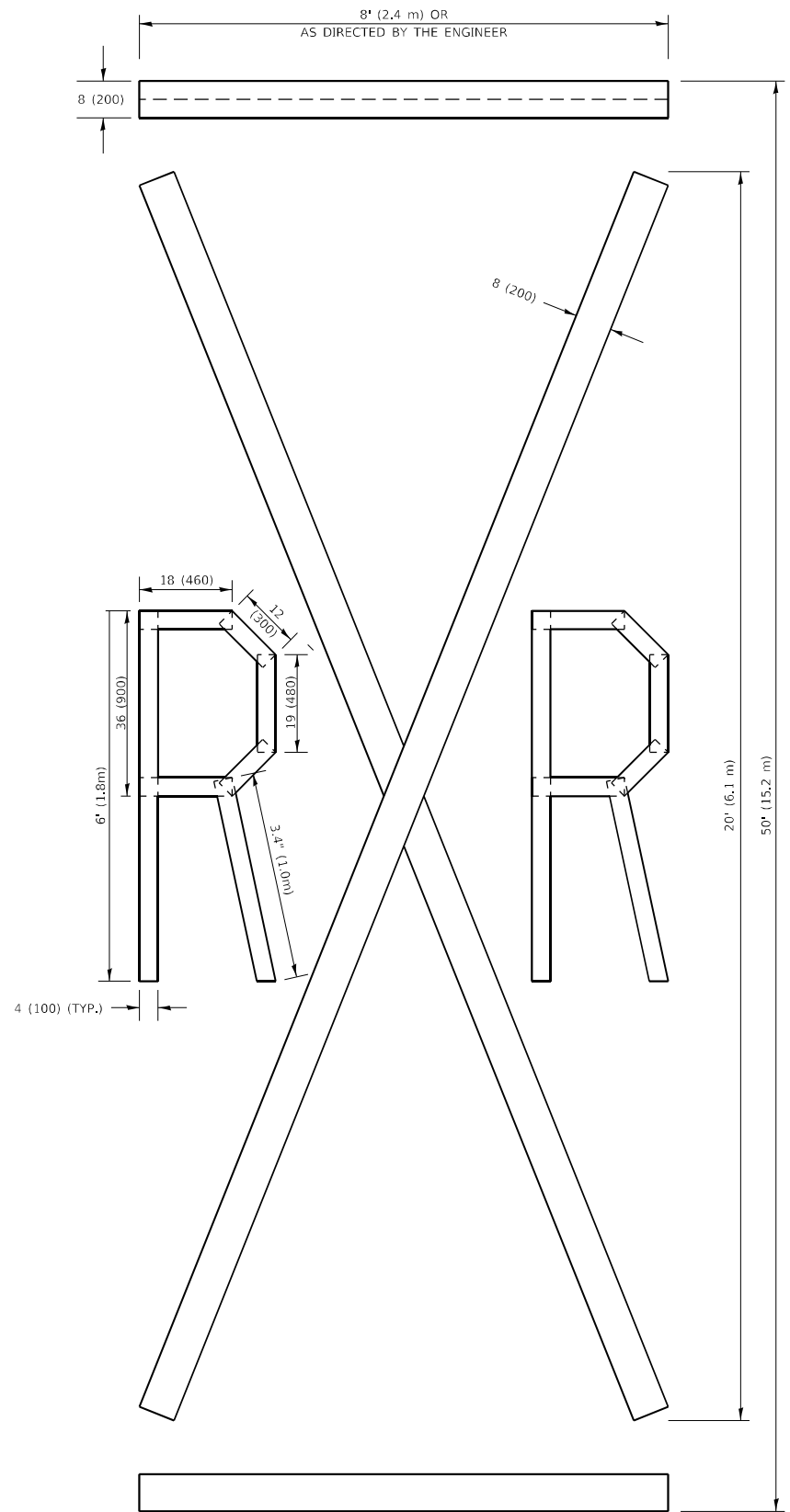


**QUANTITY**

4 (100) LINE = 82.5 ft. (25.1 m)  
27.5 sq. ft. (2.53 sq. m)

**NOTE:**

ALL QUANTITIES OF PLACEMENT ARE REPRESENTED IN LINEAR FEET OF 4" LINES TO MATCH THE 4" TEMPORARY TAPE PAY ITEM AND REPRESENTS THE TOTAL QUANTITY OF 4" TAPE REQUIRED.



**QUANTITY**

4 (100) LINE = 225.9 ft. (68.9 m)  
75.3 sq. ft. (6.99 sq. m)

All dimensions are in inches (millimeters) unless otherwise shown.

MODEL: Default  
FILE: \\nas0101\p01\illinois\work\116\116-RS\116-RS-TC-16\116-RS-TC-16.dwg

USER NAME = abebawa	DESIGNED -	REVISED - T. RAMMACHER 03-02-98
	DRAWN -	REVISED - E. GOMEZ 08-28-00
PLOT SCALE = 100,0010' / in.	CHECKED -	REVISED - E. GOMEZ 08-28-00
PLOT DATE = 2/1/2022	DATE - 09-18-94	REVISED - A. SCHUETZE 09-15-16

**STATE OF ILLINOIS  
DEPARTMENT OF TRANSPORTATION**

**SHORT TERM PAVEMENT MARKING LETTERS AND SYMBOLS**

SCALE: NONE SHEET 1 OF 1 SHEETS STA. TO STA.

F.A.U. RTE.	SECTION	COUNTY	TOTAL SHEETS	SHEET NO.
1270	2021-116-RS	*	30	29
<b>TC-16</b>			CONTRACT NO. 62P47	
ILLINOIS FED. AID PROJECT				

