

STATE OF ILLINOIS
DEPARTMENT OF TRANSPORTATION

F.A. RATE	SECTION	COUNTY	TOTAL SHEETS	SHEET NO.
VAR.	FY22 BRIDGE DECK SEALING	VARIOUS	16	1
		ILLINOIS	CONTRACT NO. 70E79	

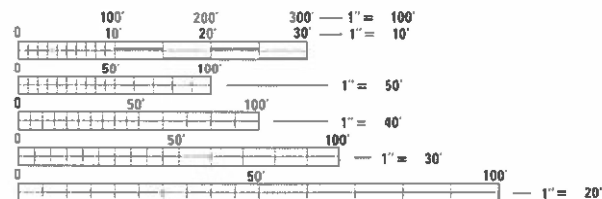
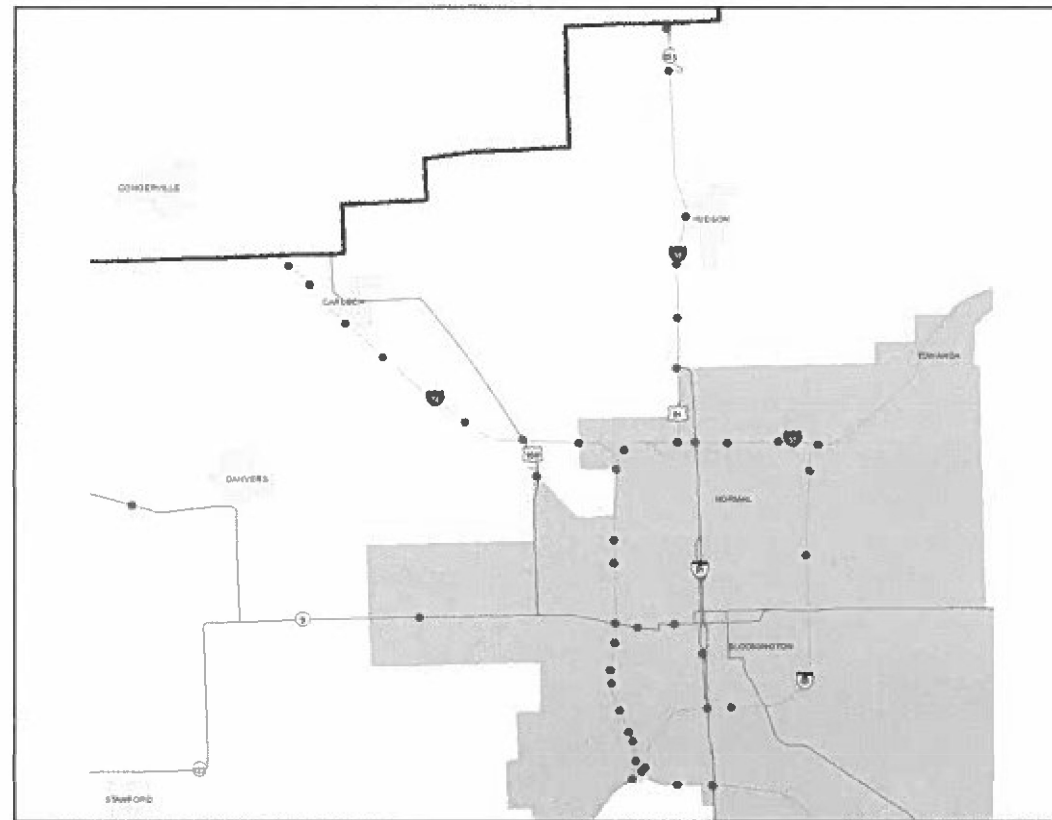
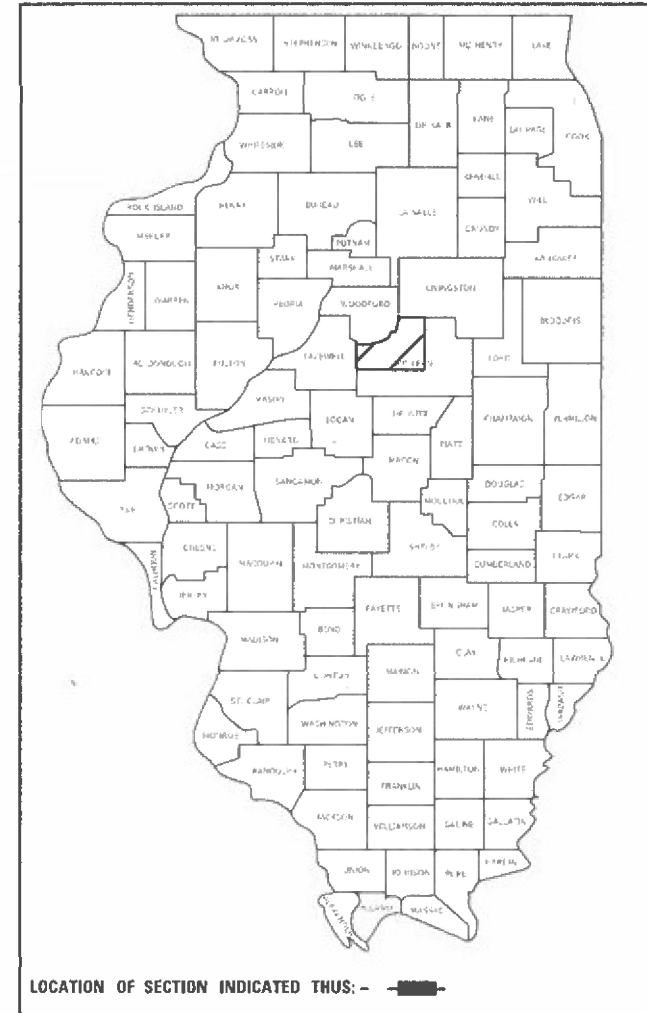
D-95-031-21

FOR INDEX OF SHEETS, SEE SHEET NO. 2

PROPOSED
HIGHWAY PLANS

VARIOUS ROUTES
SECTION FY2022 BRIDGE DECK SEALING
PROJECT STP - VLJ1(465)
BRIDGE PRESERVATION
MCLEAN COUNTY

C-95-049-21



FULL SIZE PLANS HAVE BEEN PREPARED USING STANDARD ENGINEERING SCALES. REDUCED SIZED PLANS WILL NOT CONFORM TO STANDARD SCALES. IN MAKING MEASUREMENTS ON REDUCED PLANS, THE ABOVE SCALES MAY BE USED.

J.U.L.I.E.
JOINT UTILITY LOCATION INFORMATION FOR EXCAVATION
1-800-892-0123
OR 811

PROJECT ENGINEER: TIM BRANDENBURG (217) 465-4181
PROJECT MANAGER:

GROSS LENGTH = x.xx FT. = x.xxx MILE
NET LENGTH = x.xx FT. = x.xxx MILE

CONTRACT NO. 70E79

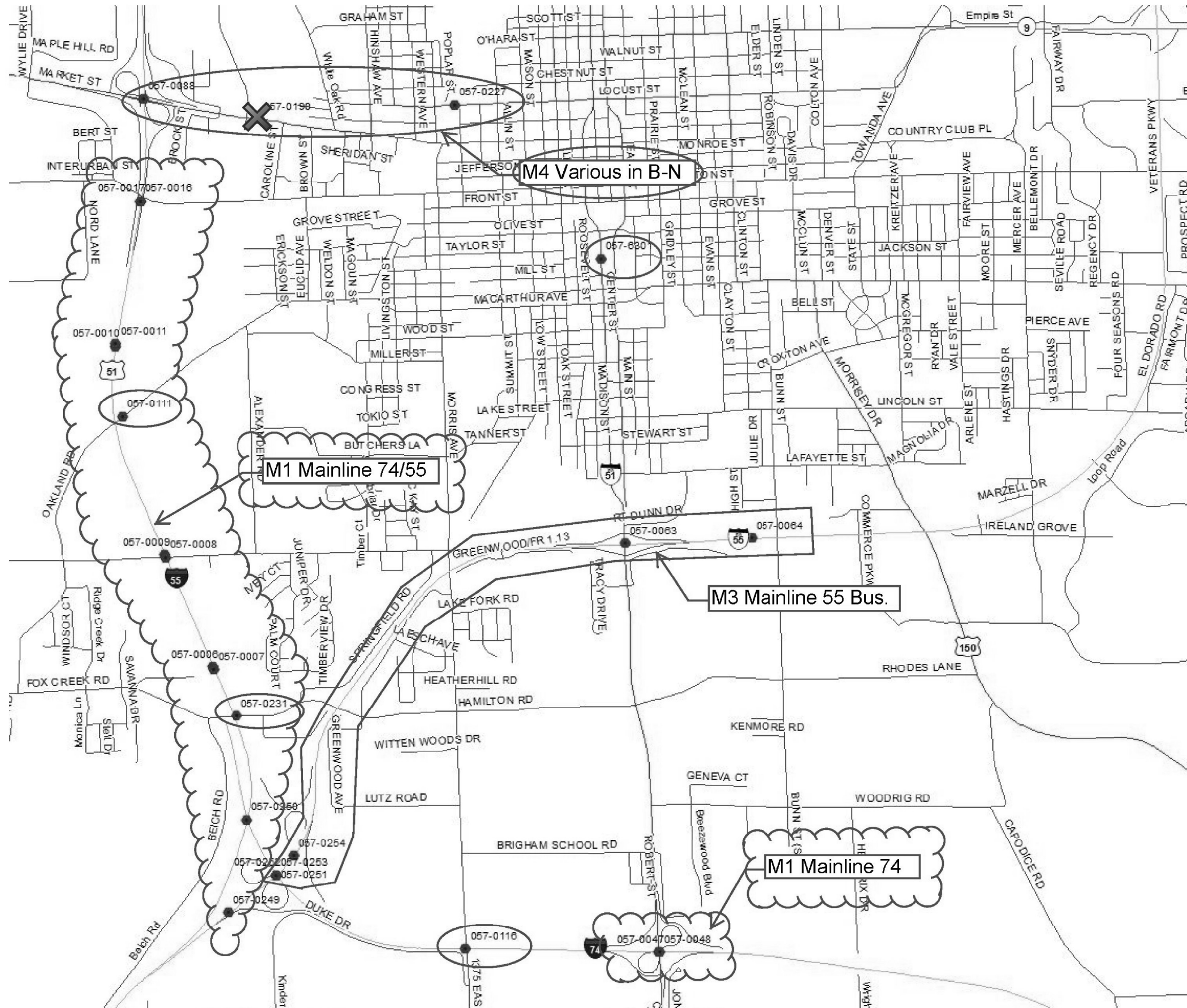
STATE OF ILLINOIS
DEPARTMENT OF TRANSPORTATION

SUBMITTED 1118 2022
Kenil A. Barnettson
REGIONAL ENGINEER

March 25, 2022
[Signature]
ENGINEER OF DESIGN AND ENVIRONMENT

March 23, 2022
[Signature]
DIRECTOR OF HIGHWAYS PROJECT IMPLEMENTATION

PRINTED BY THE AUTHORITY
OF THE STATE OF ILLINOIS



MODEL: \\MODEL\NAME
 FILE NAME: \\PUB\GIS\Gis\Projects\70E79\CADD\DATA\Hydro\I150\70E79-Sub\Map.dwg
 PROJECT: \\PUB\GIS\Gis\Projects\70E79\CADD\DATA\Hydro\I150\70E79-Sub\Map.dwg

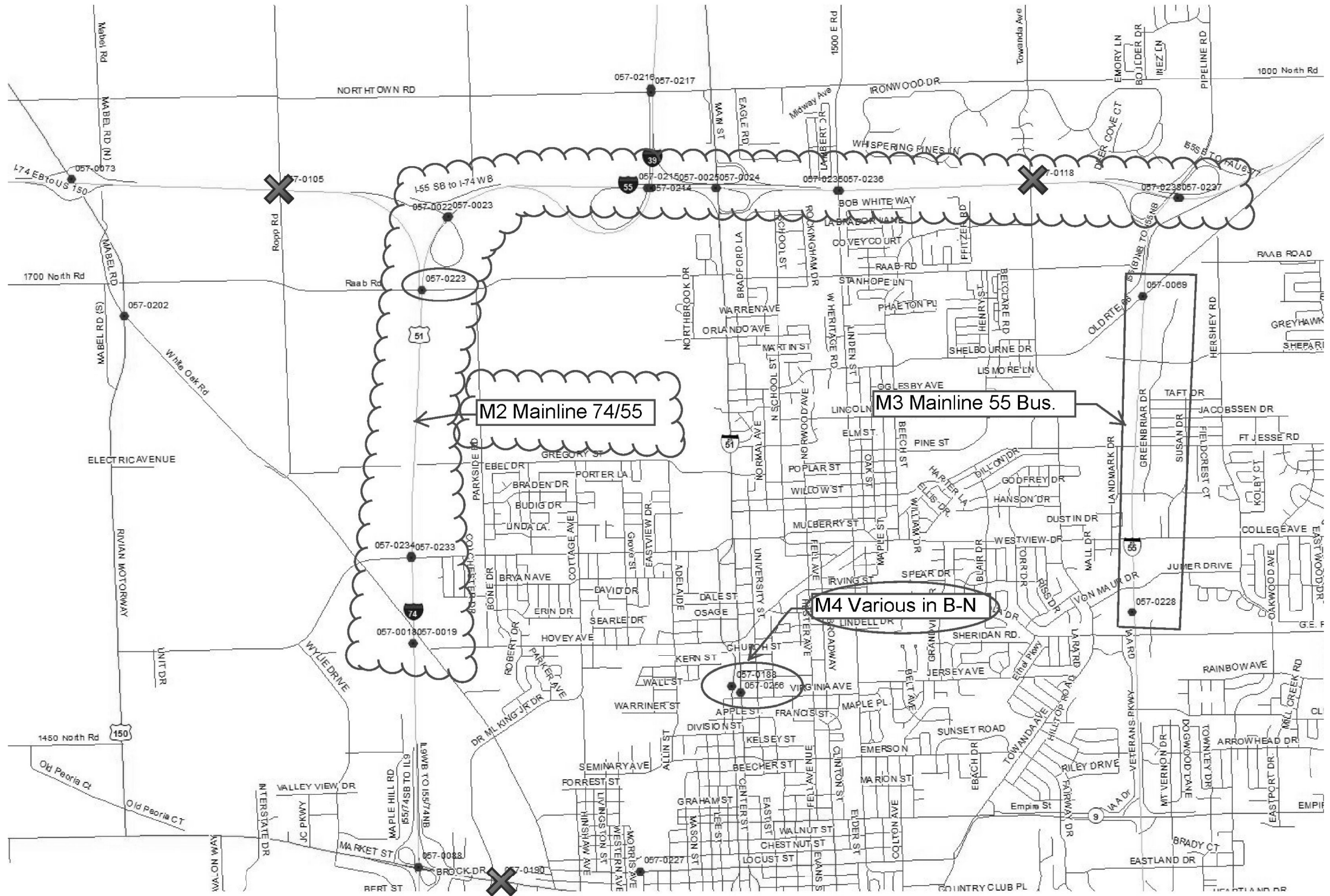
USER NAME = brandenburgj	DESIGNED - TJB	REVISED -
DRAWN -	REVISED -	REVISED -
PLOT SCALE = 40,0000' / in.	CHECKED -	REVISED -
PLOT DATE = 2/25/2021	DATE - 2/25/2021	REVISED -

STATE OF ILLINOIS
DEPARTMENT OF TRANSPORTATION

MCLEAN COUNTY LOCATION MAP

SCALE: _____ SHEET 1 OF 4 SHEETS STA. _____ TO STA. _____

F.A. RTE.	SECTION	COUNTY	TOTAL SHEETS	SHEET NO.
VAR.	FY22 BRIDGE DECK SEALING	VARIOUS	16	3
			CONTRACT NO. 70E79	
ILLINOIS FED. AID PROJECT				



MODEL: \\MODEL\NAME
 FILE NAME: \\P\ADMIN\DATA\ILLINOIS\PROJECTS\70E79\CADD\DATA\HYDRO\ILLINOIS\70E79-24-01-01.dwg
 PROJECT: 70E79-24-01-01

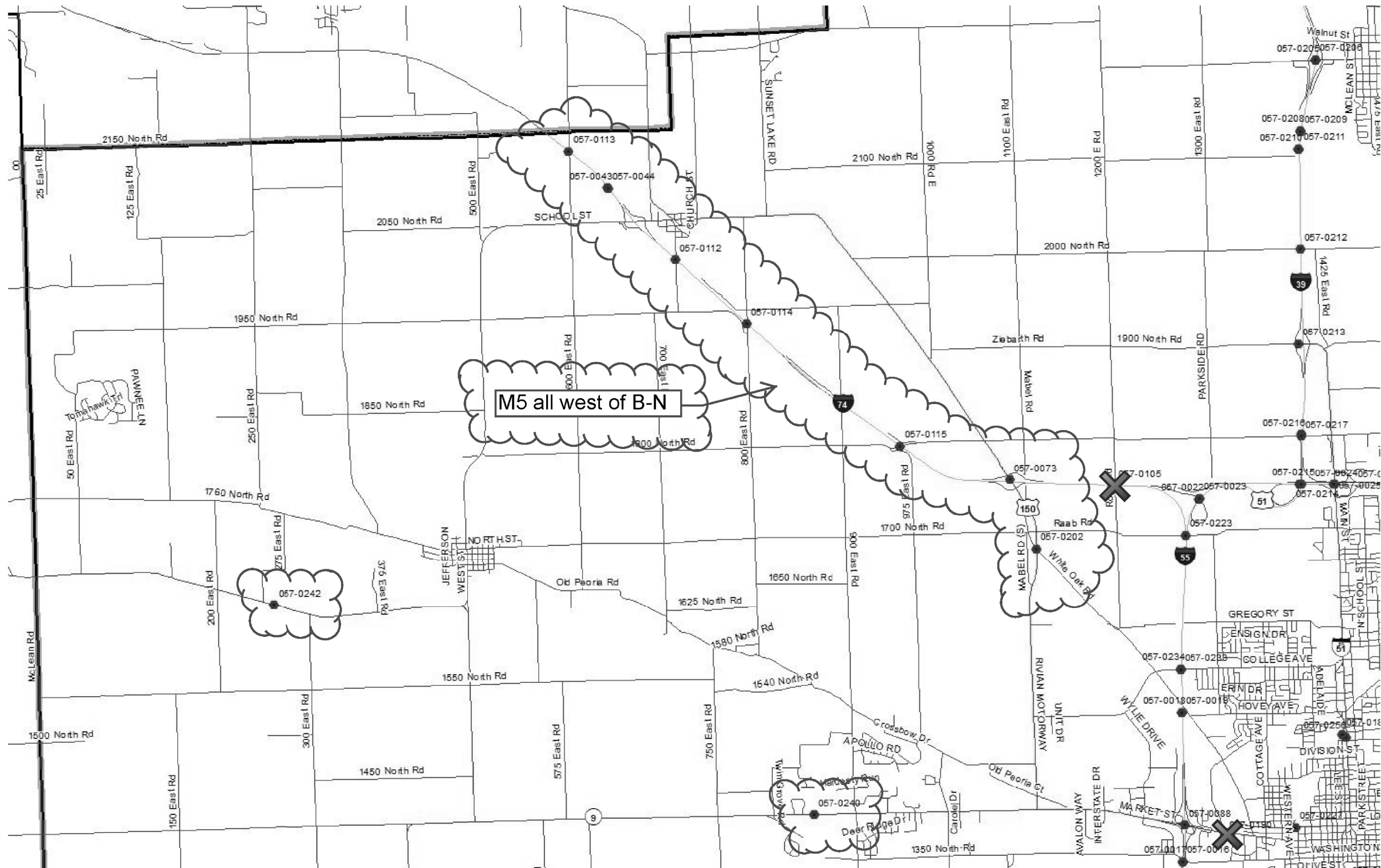
USER NAME = brandenburgjt	DESIGNED - TJB	REVISED -
DRAWN -	REVISED -	REVISED -
PLOT SCALE = 40,0000' / in.	CHECKED -	REVISED -
PLOT DATE = 2/25/2021	DATE - 2/25/2021	REVISED -

**STATE OF ILLINOIS
DEPARTMENT OF TRANSPORTATION**

MCLEAN COUNTY LOCATION MAP

SCALE: _____ SHEET 1 OF 4 SHEETS STA. _____ TO STA. _____

F.A. RTE.	SECTION	COUNTY	TOTAL SHEETS	SHEET NO.
VAR.	FY22 BRIDGE DECK SEALING	VARIOUS	16	4
			CONTRACT NO. 70E79	
ILLINOIS FED. AID PROJECT				



MODEL: \\MODELS\MHFS
 FILE: \\MHFS_Plan\plan\70E79\CADD\DATA\Hydro\MC\70E79-Sub\map.dwg

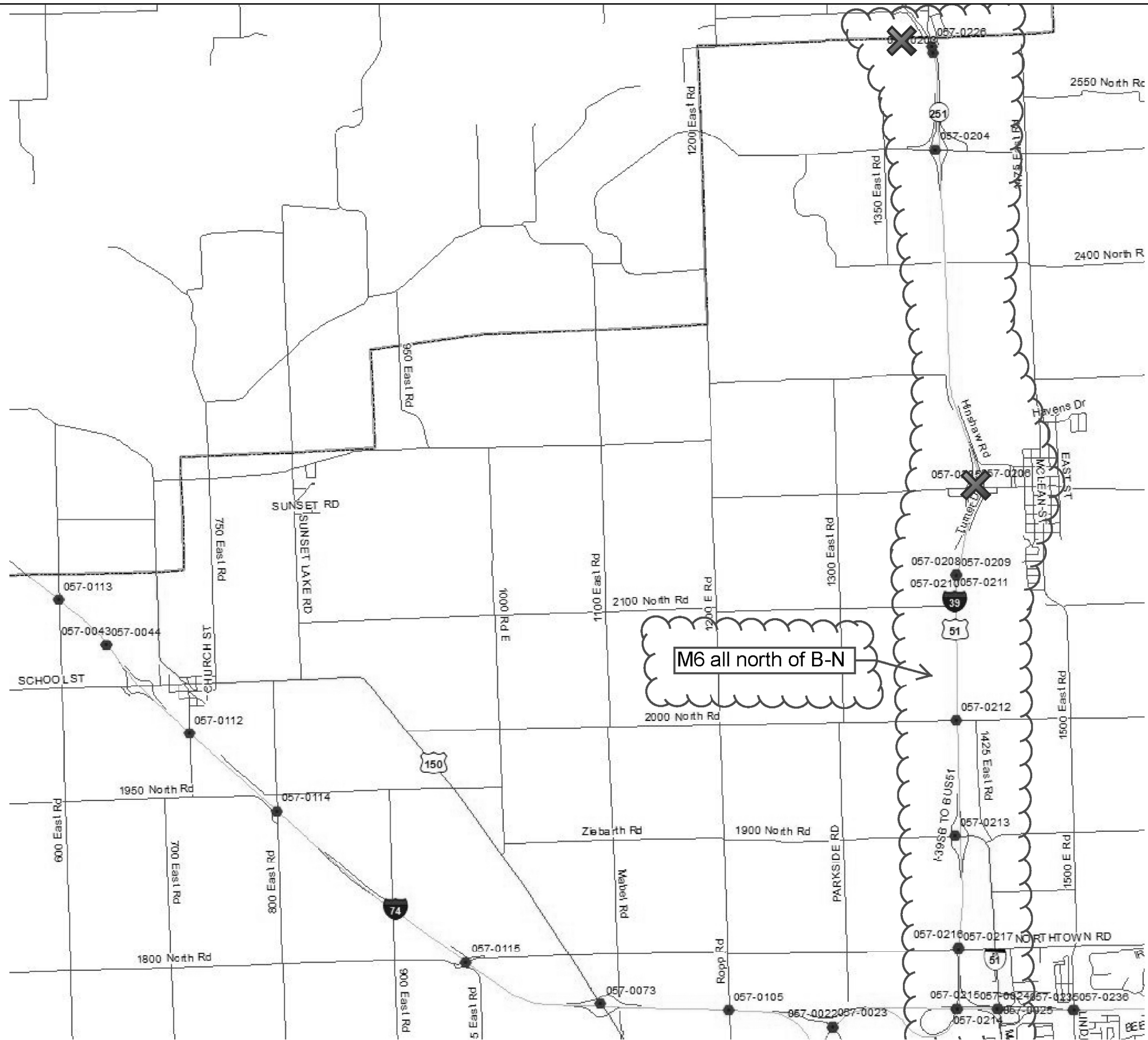
USER NAME = brandenburgj	DESIGNED - TJB	REVISED -
DRAWN -	REVISOR -	REVISOR -
PLOT SCALE = 40,0000' / in.	CHECKED -	REVISOR -
PLOT DATE = 2/25/2021	DATE - 2/25/2021	REVISOR -

STATE OF ILLINOIS
DEPARTMENT OF TRANSPORTATION

MCLEAN COUNTY LOCATION MAP
 SCALE: _____ SHEET 1 OF 4 SHEETS STA. _____ TO STA. _____

F.A. RTE.	SECTION	COUNTY	TOTAL SHEETS	SHEET NO.
VAR.	FY22 BRIDGE DECK SEALING	VARIOUS	16	5
			CONTRACT NO. 70E79	
ILLINOIS FED. AID PROJECT				

MODEL: \\MODELS\MKMF
 FILE NAME: \\pub\mcom\dot\illinois.gov\PIWDOT\Documents\DOT_Offices\Brandenburg\Projects\0570E79\CADD\DATA\Hydro\HRC\0570E79-Sub\map.dwg



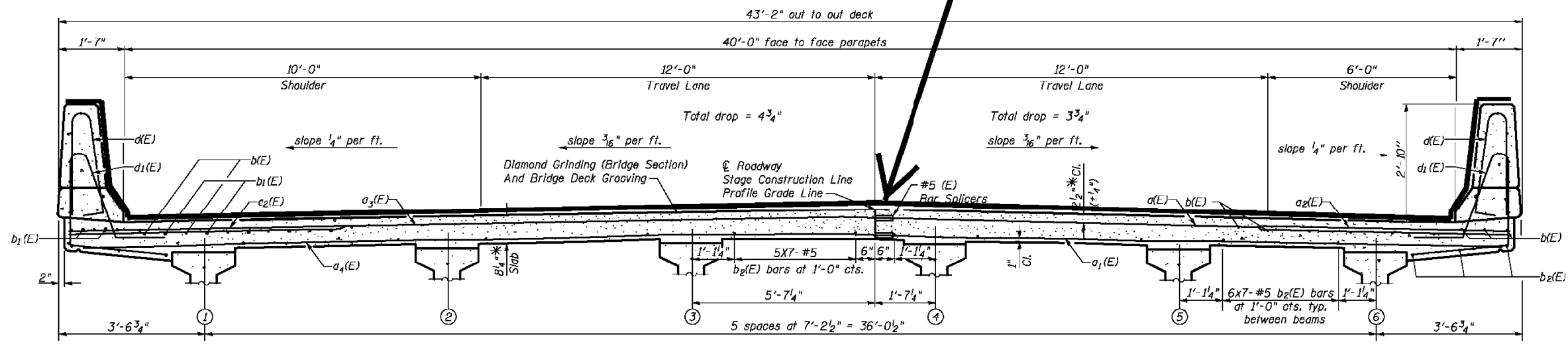
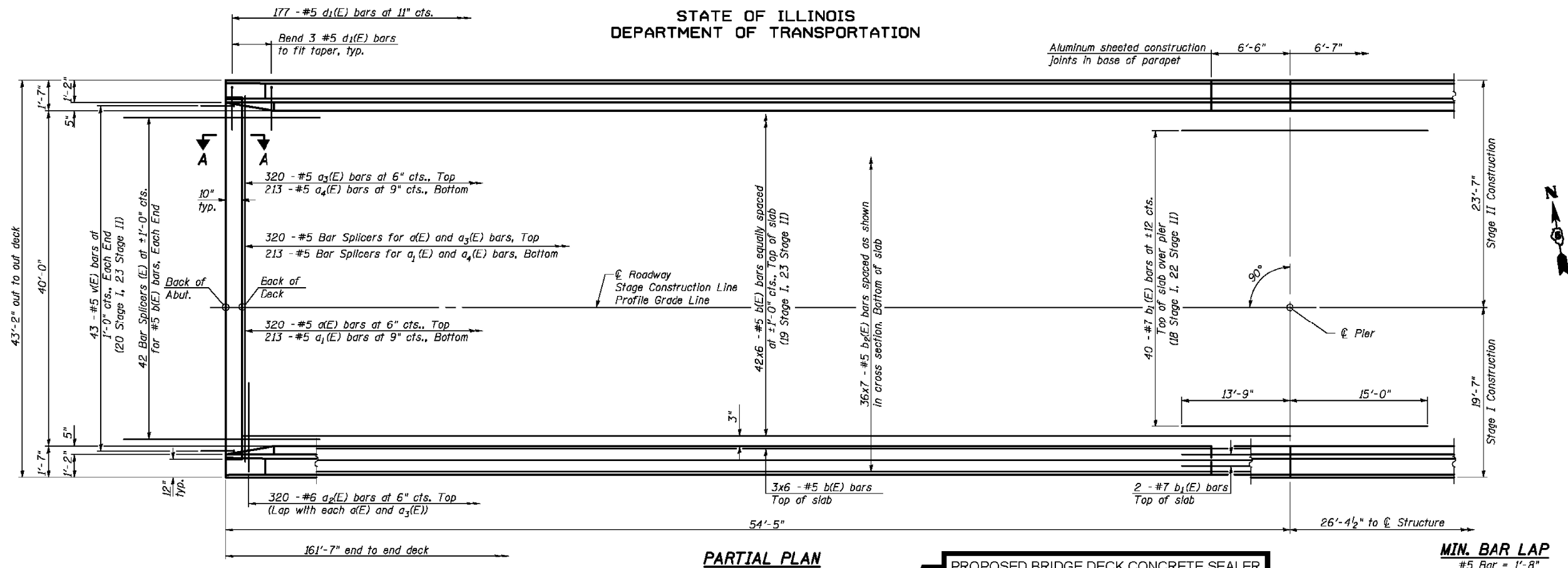
USER NAME = brandenburgj	DESIGNED - TJB	REVISED -
DRAWN -	REVISOR -	REVISED -
PLOT SCALE = 40,0000' / in.	CHECKED -	REVISED -
PLOT DATE = 2/25/2021	DATE - 2/25/2021	REVISED -

**STATE OF ILLINOIS
 DEPARTMENT OF TRANSPORTATION**

MCLEAN COUNTY LOCATION MAP
 SCALE: _____ SHEET 1 OF 4 SHEETS STA. _____ TO STA. _____

F.A. RTE.	SECTION	COUNTY	TOTAL SHEETS	SHEET NO.
VAR.	FY22 BRIDGE DECK SEALING	VARIOUS	16	6
			CONTRACT NO. 70E79	
ILLINOIS FED. AID PROJECT				

STATE OF ILLINOIS
DEPARTMENT OF TRANSPORTATION



DESIGNED	RRD
CHECKED	AJS
DRAWN	KAS
CHECKED	JAR

Notes:
See Sheet 12 of 27 for superstructure details and Bill of Material.
Bars indicated thus 20 x 3-#5 etc. indicates 20 lines of bars with 3 lengths per line.
See Sheet 12 of 27 for parapet reinforcement.
See Sheet 27 of 27 for bar splicers details.
See Sheet 11 of 27 for diaphragm details.

TYPICAL SECTION; FOUR-LANE WITH PARAPET; DUAL STRUCTURES

CROSS SECTION
(Looking Upstation Westbound)
(Looking Downstation Eastbound)

* Prior to grinding

SHEET NO. 10 27 SHEETS		F.A.I. RTE.	SECTION	COUNTY	TOTAL SHEETS	SHEET NO.
		74	(57-21B)BR	MCLEAN	61	22
SUPERSTRUCTURE DETAILS (1 OF 3)				CONTRACT NO. 70641		
FED. ROAD DIST. NO. 7 ILLINOIS FED. AID PROJECT						

SUPERSTRUCTURE
I-74 OVER LITTLE KICKAPOO CREEK
STRUCTURE NO. 057-0120
AND 057-0121
STRAND ASSOCIATES, INC.

MODEL: I:\MODEL\NAMES FILE NAME: p:\pub\mcm\mcm\dot\Documents\DOT Office\Drawings\Projects\057-0120\Hydro\057-0120-18-Data\k.dwg

USER NAME = brandenbjtj	DESIGNED - TJB	REVISED -
PLOT SCALE = 40,0000 */ in.	CHECKED -	REVISED -
PLOT DATE = 2/23/2021	DATE - 5/4/2020	REVISED -

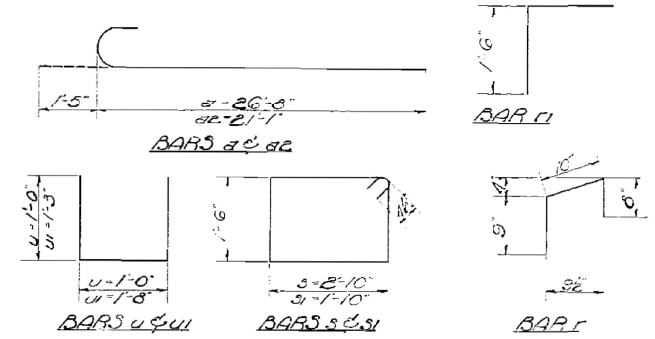
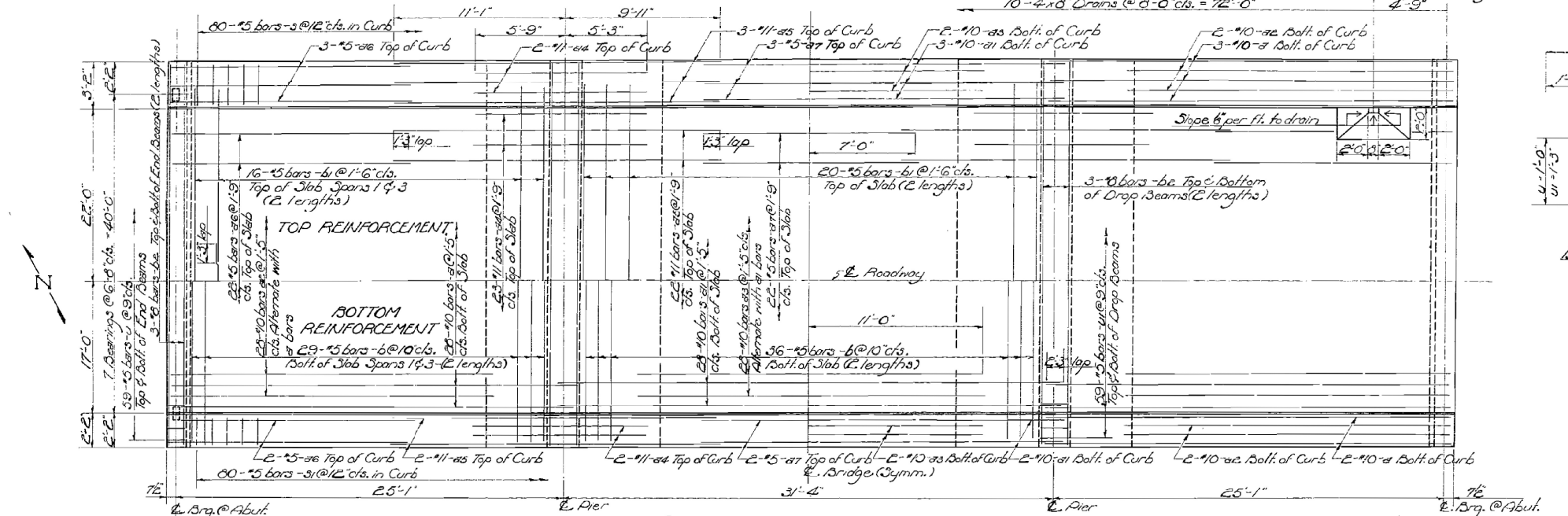
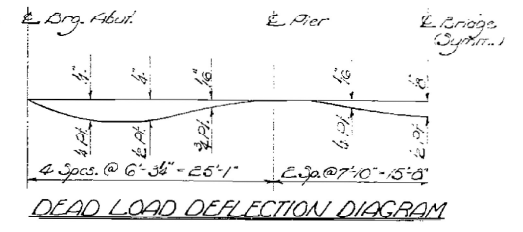
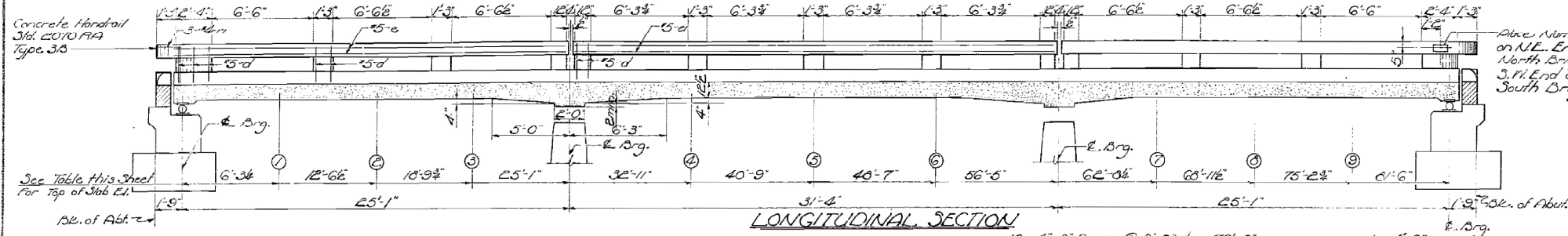
STATE OF ILLINOIS
DEPARTMENT OF TRANSPORTATION

SCALE: _____	SHEET 1	OF 5 SHEETS	STA. _____	TO STA. _____
--------------	---------	-------------	------------	---------------

F.A.I. RTE.	SECTION	COUNTY	TOTAL SHEETS	SHEET NO.
VAR.	FY22 BRIDGE DECK SEALING	VARIOUS	16	8
CONTRACT NO. 70E79				
ILLINOIS FED. AID PROJECT				

STATE OF ILLINOIS
DEPARTMENT OF PUBLIC WORKS & BUILDINGS
DIVISION OF HIGHWAYS

PROJECT NO.	SECTION	COUNTY	TOTAL SHEETS	SHEET NO.
74	57-17B	MCLEAN	19	6
FED. ROAD DIST. NO. 1		ILLINOIS	FED. AID PROJECT	



BILL OF MATERIAL - E BRIDGES

Bar	No.	Size	Length	Splice
#1	132	#10	22'-5"	
#1	166	#10	33'-6"	
#2	128	#10	12'-0"	
#2	62	#10	22'-0"	
#4	108	#11	11'-0"	
#5	108	#11	21'-0"	
#6	100	#5	15'-9"	
#7	54	#5	14'-0"	
b	376	#5	22'-5"	
b	208	#5	21'-6"	
bl	96	#8	23'-0"	
s	160	#5	9'-5"	
sl	160	#5	7'-5"	
u	472	#5	3'-0"	
ul	472	#5	4'-2"	
d	216	#5	2'-9"	
e	52	#5	25'-6"	
el	16	#5	31'-0"	
r	112	#4	2'-3"	
rl	24	#4	3'-0"	

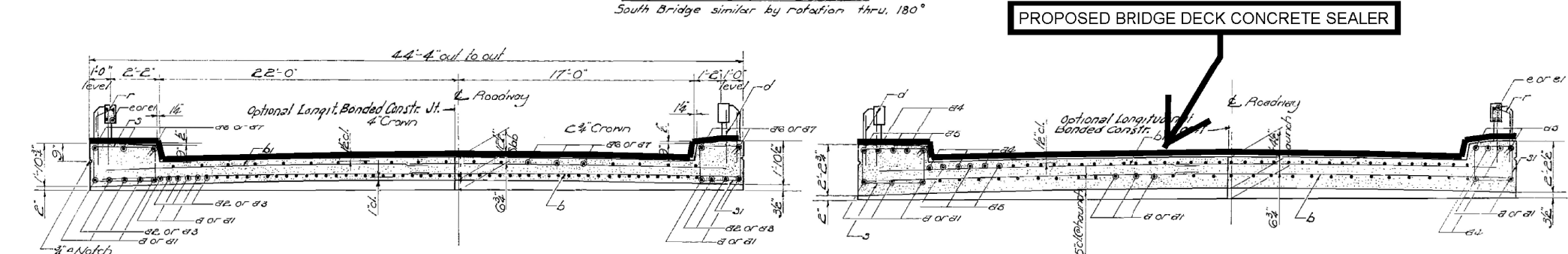
Class A Concrete Cu. 466 334.1

Handrail Concrete Cu. 466 2.0

Reinforcement Bars Lbs. 32,830

Structural Steel Lbs. 20,040

Name Plates Each 2



TYPICAL SECTION; FOUR-LANE WITH CURB; DUAL STRUCTURES

Location	E. Brg. Abut. (1)	(2)	(3)	E. Pier-1	(4)	(5)	(6)	E. Pier-2	(7)	(8)	(9)	E. Brg. Abut.
Theoretical Elevation	755.75	755.78	755.81	755.85	755.93	755.97	756.02	756.07	756.10	756.14	756.18	756.22
Theoretical El. + D. Defl.	755.75	755.80	755.83	755.88	755.93	755.98	756.02	756.07	756.11	756.16	756.20	756.22

DESIGNED: Joseph W. Lomic

CHECKED: C. W. Slick

DRAWN: R. J. L. m. jacob

CHECKED: C. W. S.

APR 13 19 41

EXAMINED: H. E. Bannerman

PASSED: E. H. ...

APPROVED: R. R. ...

SUPERSTRUCTURE

F.A.I. RT. 74 - SEC. 57-17B

MCLEAN COUNTY

STA. 1512+64

Added Long. Bonded Concrete Joint. R. D. 12/12/83.

MODEL: I:\MODEL\NAME

FILE: NAME: ...

USER NAME = brandenburgtj	DESIGNED - TJB	REVISED -
PLOT SCALE = 40,0000 */ in.	CHECKED -	REVISED -
PLOT DATE = 2/23/2021	DATE = 5/4/2020	REVISED -

STATE OF ILLINOIS
DEPARTMENT OF TRANSPORTATION

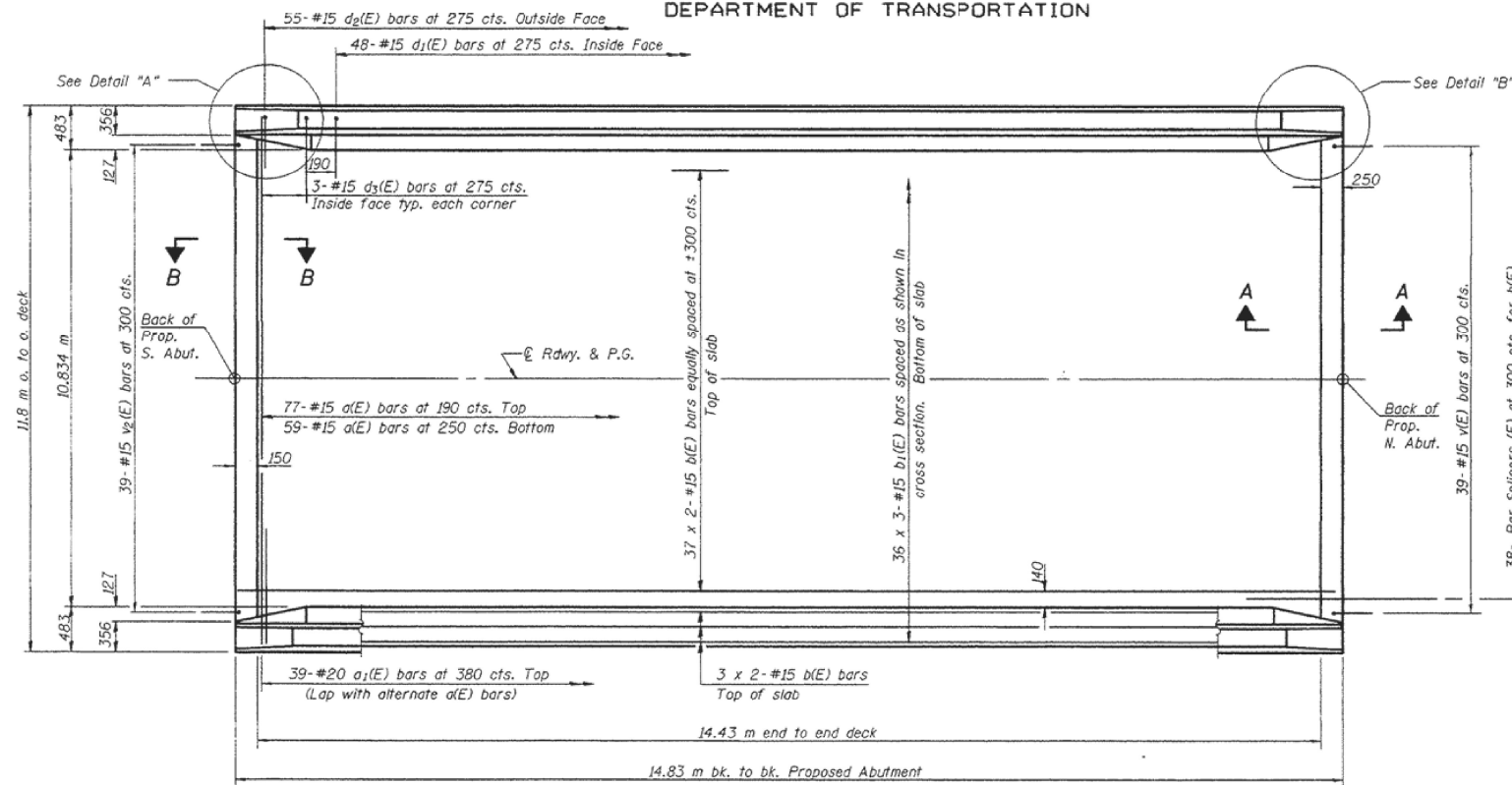
SCALE: _____	SHEET 2	OF 5	SHEETS	STA. _____	TO STA. _____
--------------	---------	------	--------	------------	---------------

F.A. RTE.	SECTION	COUNTY	TOTAL SHEETS	SHEET NO.
VAR.	FY22 BRIDGE DECK SEALING	VARIOUS	16	9
CONTRACT NO. 70E79			ILLINOIS FED. AID PROJECT	

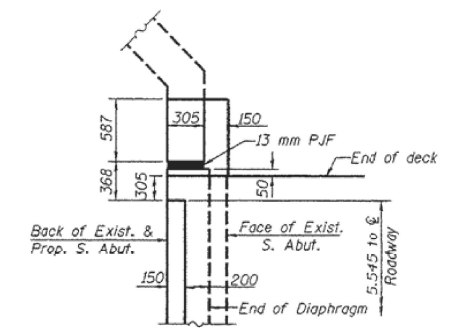
STATE OF ILLINOIS
DEPARTMENT OF TRANSPORTATION

PROJECT NO.	DATE	SCALE	SHEET NO.
F.A.S. 1671	REVISION	ORIGINAL	11
PROJ. NO. 021-0011	SUBJECT	FED. AID PROJECT	

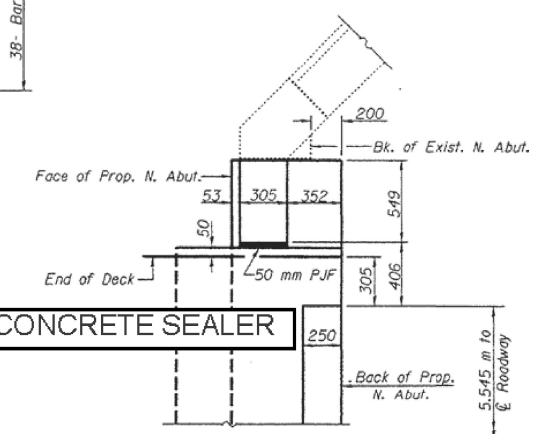
SHEET NO. 3
13 SHEET
90948



PLAN

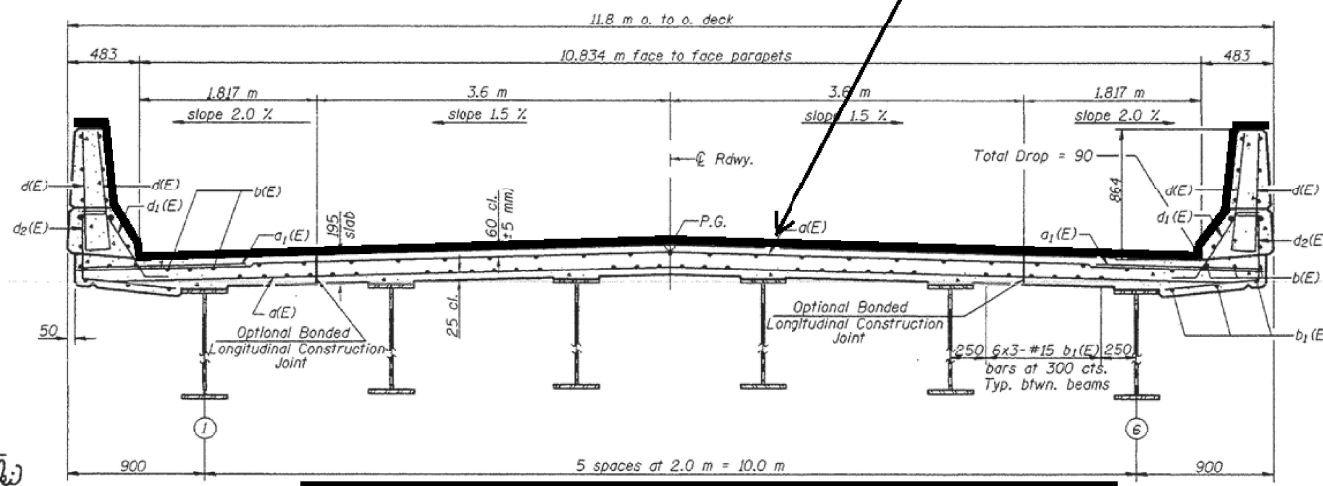


DETAIL "A"
Parapet and Approach not shown.



DETAIL "B"
Parapet and Approach not shown.

PROPOSED BRIDGE DECK CONCRETE SEALER



TYPICAL SECTION; TWO-LANE TWO-WAY WITH PARAPET

CROSS SECTION
(Looking North)

MIN. BAR LAPS
#15 bars = 640

Notes: See Sheet 4 of 13 for superstructure details and Bill of Material.
Reinforcement bars designated (E) shall be epoxy coated.
Bars indicated thus 1 x 3-#15 etc. indicates 1 line of bars with 3 lengths per line.
See Sheet 4 of 13 for parapet reinforcement.
All dimensions are in millimeters (mm) except as noted.
See sheet 12 of 13 for bar splicer details.

SUPERSTRUCTURE
F.A.S. RTE. 1671 SEC. 22BR-1
DOUGLAS COUNTY
STATION 22+618.644
STRUCTURE NO. 021-0011

DESIGNED	Jonas H. Petty	January 30, 2018
CHECKED	Mark D. Shaffer	
DRAWN	R. Sommer	
CHECKED	J.D.P./M.D.S.	

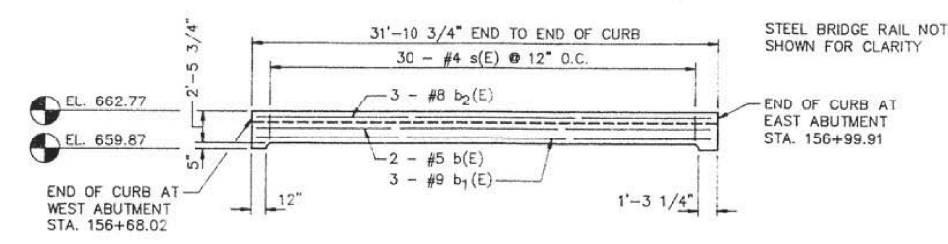
STATE OF ILLINOIS
DEPARTMENT OF TRANSPORTATION

TYPICAL SECTIONS

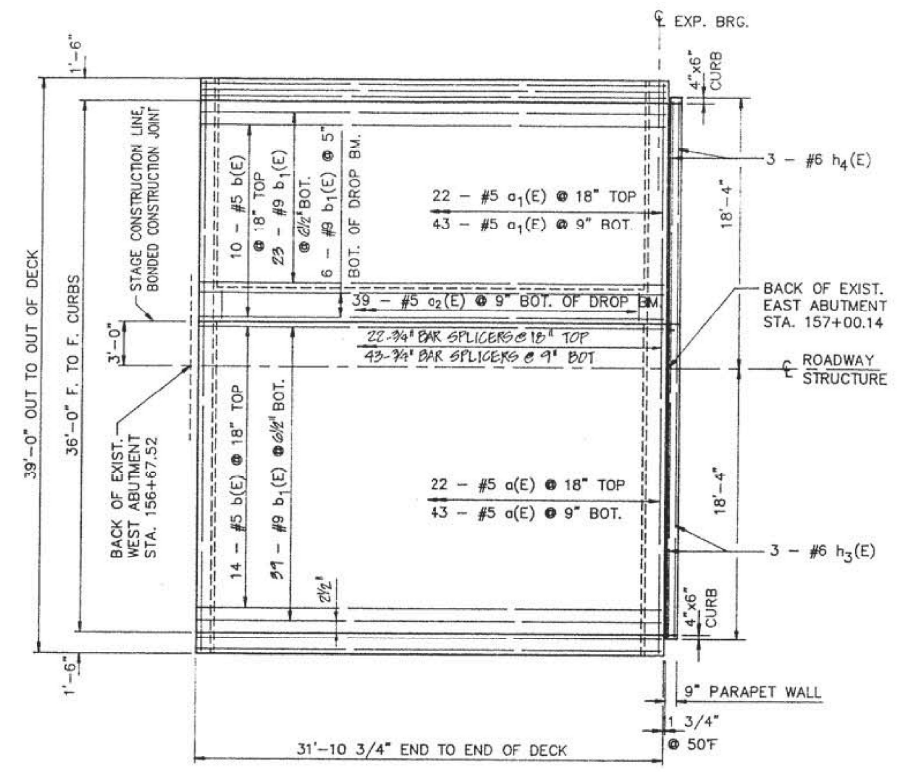
USER NAME = brandenburgjt	DESIGNED - TJB	REVISED -	F.A.S. RTE.	SECTION	COUNTY	TOTAL SHEETS	SHEET NO.
PLOT SCALE = 40,0000 */ in.	CHECKED -	REVISED -	VAR.	FY22 BRIDGE DECK SEALING	VARIOUS	16	10
PLOT DATE = 2/23/2021	DATE - 5/4/2020	REVISED -	SCALE: _____ SHEET 3 OF 5 SHEETS STA. _____ TO STA. _____		ILLINOIS FED. AID PROJECT		

MODEL: I:\MODEL\NAMES
FILE NAME: P:\pub\mason.dwg
PROJECT: I:\projects\057079\FY22\057079\CADD\DATA\Hydro\057079-01-01.dwg
DATE: 2/23/2021

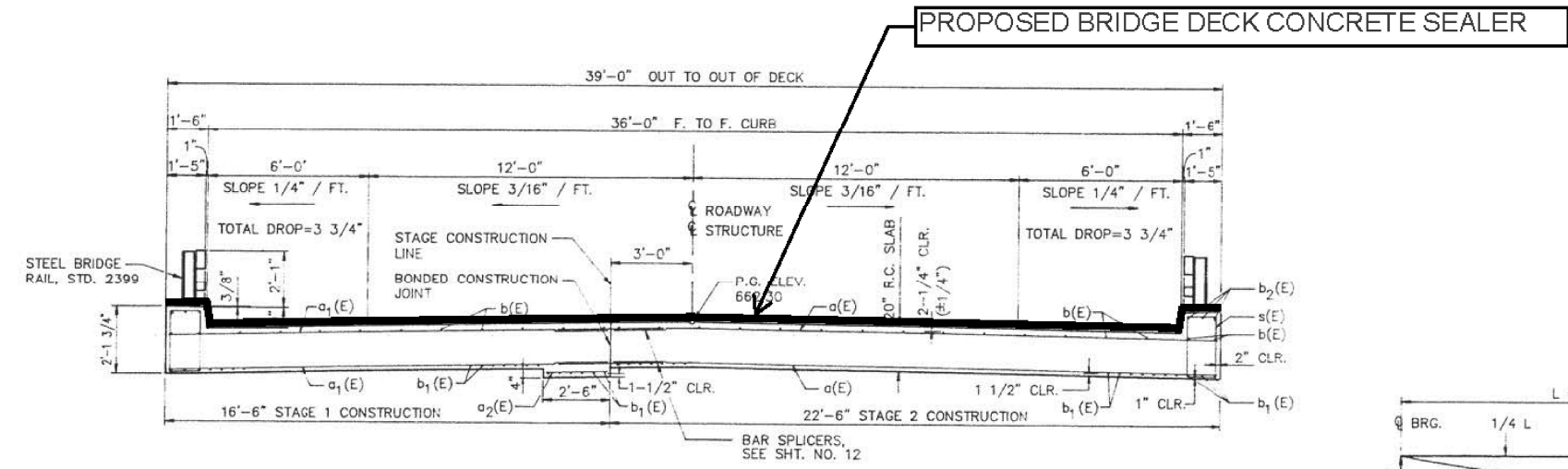
F.A.P. RTE.	SECTION	COUNTY	TOTAL SHEETS	SHEET NO.
79	143 BR-3	DOUGLAS	19	13
F.H.W.A. REG.	ILLINOIS	PROJECT		



ELEVATION OF CURB BEAM
(DIMENSIONS @ OUTSIDE EDGE)

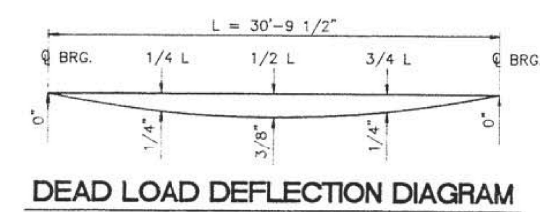


PLAN



CROSS SECTION
LOOKING EAST

TYPICAL SECTION; TWO-LANE TWO-WAY WITH CURB



DEAD LOAD DEFLECTION DIAGRAM

BILL OF MATERIALS SUPERSTRUCTURE

BAR	SIZE	NO. REQ'D	LENGTH	SHAPE
a(E)	#5	67	22'-2"	—
a1(E)	#5	67	16'-2"	—
a2(E)	#5	39	2'-2"	—
a3(E)	#6	6	22'-2"	—
a4(E)	#6	6	16'-2"	—
b(E)	#5	28	31'-7"	—
b1(E)	#9	74	31'-7"	—
b2(E)	#8	6	31'-7"	—
b3(E)	#6	3	21'-0"	—
b4(E)	#6	3	15'-0"	—
s(E)	#4	60	6'-5"	□
s1(E)	#4	42	6'-1"	□
s2(E)	#4	42	5'-2"	□

ITEM	UNIT	QUANTITY
PERFORMED JOINT SEAL 2-1/2"	LIN. FT.	39
CLASS "X" CONCRETE SUPERSTRUCTURE	CU. YD.	84.0
PROTECTIVE COAT	SQ. YD.	22
ELASTOMERIC BEARING ASSEMBLY TYPE I	EACH	7
FURNISHING AND ERECTING STRUCTURAL STEEL	POUND	1822
REINFORCEMENT BARS, EPOXY COATED	POUND	13,220

REINFORCEMENT BARS DESIGNATED (E) SHALL BE EPOXY COATED. SEE SHT. NO. 14 FOR BAR BENDING DETAILS.
SEE SHT. NO. 17 FOR ADDITIONAL PARAPET WALL DETAILS.

SUPERSTRUCTURE

U.S. 36 over Dry Fork Creek
F.A.P. RTE. 79 Section 143 BR-3
Douglas County
Sta. 156+84
Structure Number 021-0017

Drawn **EWING**
Date **4/30/90**
REV. **B/90**

Project No.
18189002

UPCHURCH AND ASSOCIATES
engineers architects surveyors
MATTOON, ILL. 235-3177

REV 10-15-90 BY PLC CHANGED REINFORCEMENT BARS, EPOXY COATED FROM 15,263 TO 13,220 POUNDS

USER NAME = brandenburgjt	DESIGNED - TJB	REVISED -
DRAWN -	REVISED -	REVISED -
PLOT SCALE = 40,0000 * / in.	CHECKED -	REVISED -
PLOT DATE = 2/23/2021	DATE - 5/4/2020	REVISED -

STATE OF ILLINOIS
DEPARTMENT OF TRANSPORTATION

TYPICAL SECTIONS

SCALE: _____ SHEET 4 OF 5 SHEETS STA. _____ TO STA. _____

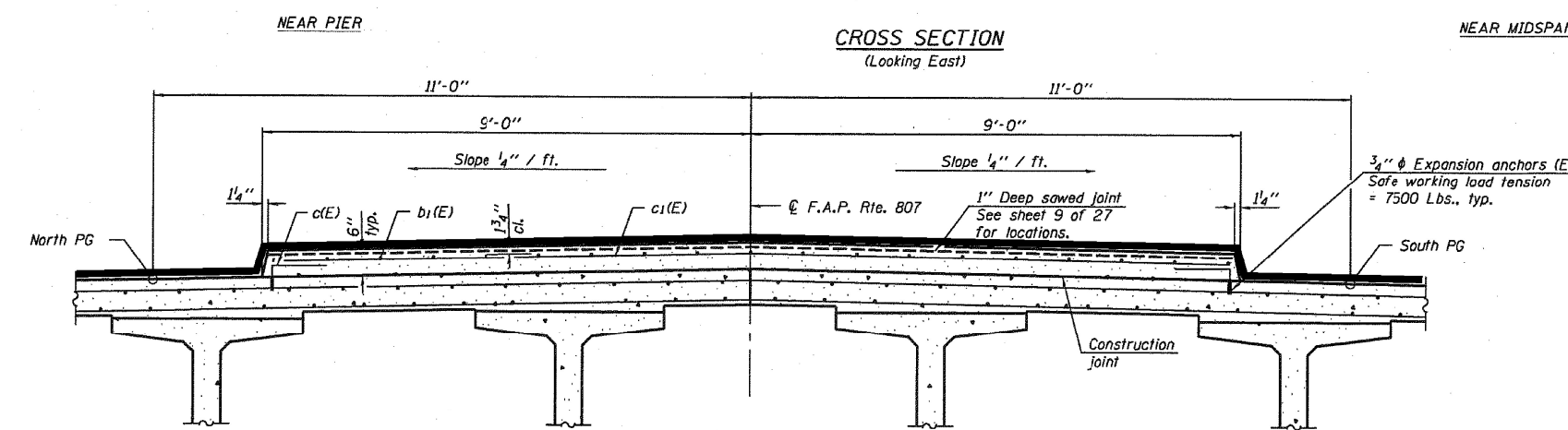
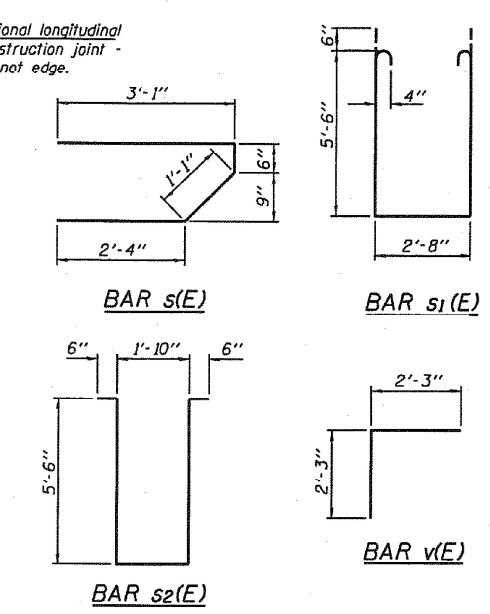
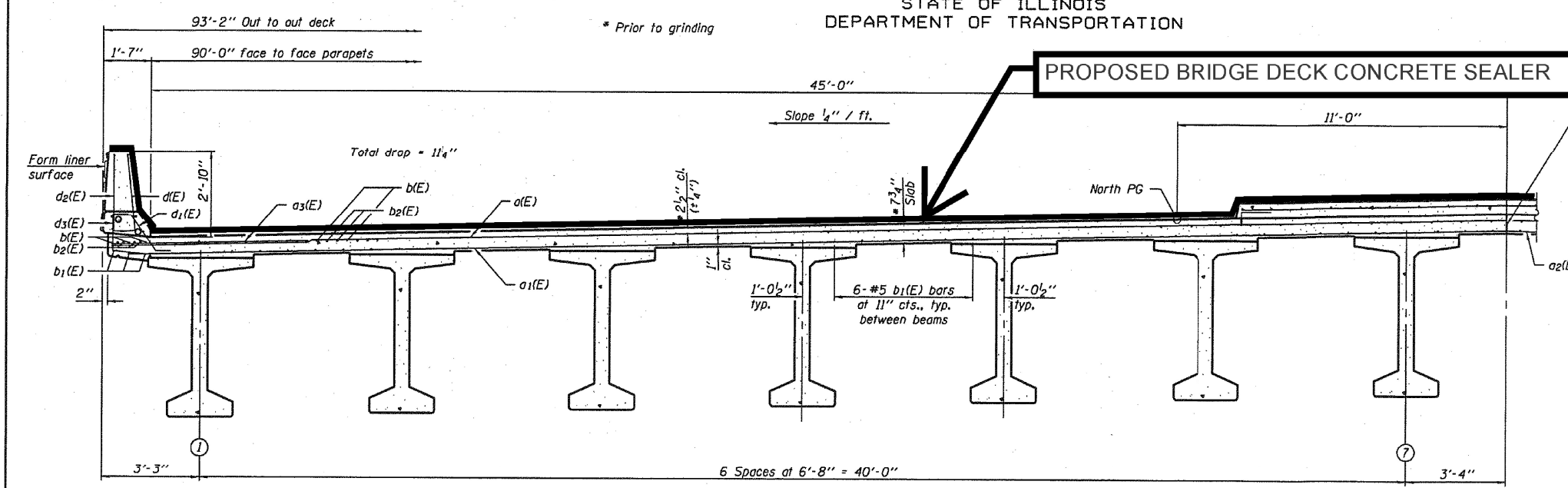
F.A. RTE.	SECTION	COUNTY	TOTAL SHEETS	SHEET NO.
VAR.	FY22 BRIDGE DECK SEALING	VARIOUS	16	11
CONTRACT NO. 70E79			ILLINOIS FED. AID PROJECT	

MODEL: I:\MODEL\MAINT FILE: MAINT: P:\pub\mcom\dot\illinc\pwr\PIWDOT\Documents\DOT Office\Drawings\Projects\0570E79\CADDData\Hydro\HRS\0570E79-hs-drawtbl.dwg

STATE OF ILLINOIS
DEPARTMENT OF TRANSPORTATION

ROUTE NO.	SECTION	COUNTY	SHEETS	SHEET NO.
F.A.I. 57	10-32HB-3,K	CHAMPAIGN	352	119
FED. ROAD DIST. NO. 7	ILLINOIS	FED. AID PROJECT		

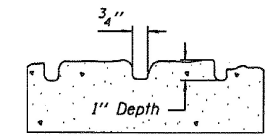
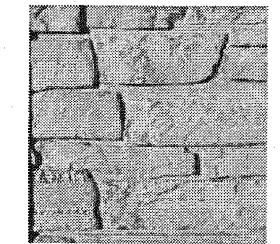
Contract #90758



TYPICAL SECTION WITH MEDIAN

SECTION THRU MEDIAN (Looking East)

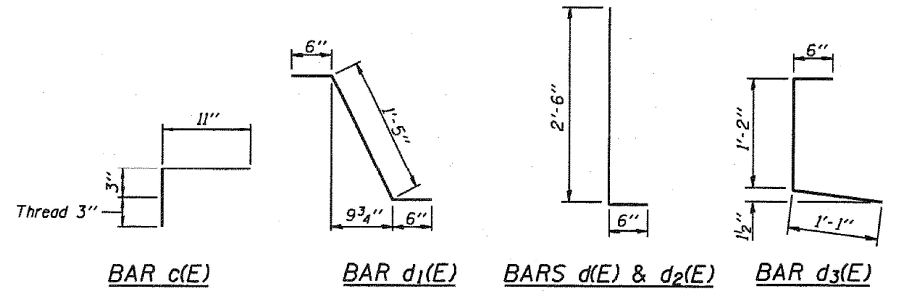
Notes:
See sheet 11 of 27 for additional superstructure details and Bill of Material.
For diaphragm details, see sheets 12 and 13 of 27.
Reinforcement bars designated (E) shall be epoxy coated.
Bars indicated thus 20 x 3-#5 etc. indicates 20 lines of bars with 3 lengths per line.
See sheet 11 of 27 for parapet reinforcement.
Limestone Form Liner Textured Surface to be used on outside face of parapet. Utilize Tetan Dry Stack (Scott system #189) or equivalent.
The depth of relief of the Form Liner Textured Surface is limited to 1". The relief should not compromise the reinforcement clearance in the parapet.
Cost of expansion anchors (E) included in the cost of Reinforcement Bars, Epoxy Coated.



FORM LINER TEXTURE DETAIL
See Special Provisions.

SUPERSTRUCTURE DETAILS
F.A.I. ROUTE 57 SEC. 10-32HB-3,K
CHAMPAIGN COUNTY
STATION 297+20.45
STRUCTURE NO. 010-0272

DESIGNED Gholam R. Ahanchi	April 28, 2006
CHECKED Rebecca L. Tharp	EXAMINED Thomas J. Demagallo
DRAWN Michael B. Mossman	PASSED Ralph E. Anderson
CHECKED G.R.A. / R.L.T.	ENGINEER OF BRIDGES AND STRUCTURES



MODEL: I:\MODEL\NAMES
FILE NAME: p:\pub\mossman\dot\illinois\gov\p\DOT\Documents\DOT Office\Drawings\Projects\057079\CADDData\Hydro\files\057079-shs-detailed.dwg

USER NAME = brandenburgjt	DESIGNED - TJB	REVISED -
PLOT SCALE = 40,0000 */ in.	CHECKED -	REVISED -
PLOT DATE = 2/25/2021	DATE - 5/4/2020	REVISED -

STATE OF ILLINOIS
DEPARTMENT OF TRANSPORTATION

TYPICAL SECTIONS

SCALE: SHEET 5 OF 5 SHEETS STA. TO STA.

F.A. RTE.	SECTION	COUNTY	TOTAL SHEETS	SHEET NO.
VAR. FY22 BRIDGE DECK SEALING		VARIOUS	16	12
CONTRACT NO. 70E79				
ILLINOIS FED. AID PROJECT				

MCLEAN COUNTY STRUCTURES SCHEDULE OF QUANTITIES

ACTUAL MEASUREMENTS

SN	ROUTE CARRIED	FEATURE CROSSED	SIMS INFORMATION		DECK			APPROACH SLABS					PARAPETS (HUB, FACE & TOP)			TYPE B CURB (FACE & TOP)			TOTAL (SQ FT)	RURAL	URBAN MPO B-N	FIELD MEASURED		
			LENGTH	WIDTH	LENGTH (E -E)	WIDTH (F-F)	AREA (SQ FT)	LENGTH (FT)	DIMENSIONS INSIDE PARAPET / CURB		DIMENSIONS BEYOND PARAPET / CURB		AREA (SQ FT)	HEIGHT	LENGTH (FT)		AREA (SQ FT)	HEIGHT					LENGTH	AREA (SQ FT)
									LENGTH	WIDTH	LENGTH	WIDTH			3.6 FT TYPICAL	ALONG DECK								
057-0006	I-55/I-74	OVER UPRR	237.0	70.8	234.7	67.6	15852.0	30.0	30.0	67.6	0.0	70.8	4053.0	3.60	234.7	21.0	1992.0	0.75	18.0	27.0	21924.0		X	
057-0007	I-55/I-74 NB	ICG RR	226.0	69.0	223.7	65.8	14717.5	30.0	30.0	65.8	0.0	69.0	3948.0	3.60	223.7	21.0	1912.8	0.75	18.0	27.0	20606.0		X	
057-0008	I-55/I-74 NB	SIX PTS RD/FAU 6369	130.0	65.6	127.7	62.4	7966.6	30.0	30.0	62.4	0.0	65.6	3744.0	3.60	127.7	21.0	1221.6	0.75	18.0	27.0	12960.0		X	
057-0009	I-55/I-74 SB	SIX PTS.RD/FAU 6369	130.0	65.6	127.7	62.4	7966.6	30.0	30.0	62.4	0.0	65.6	3744.0	3.60	127.7	21.0	1221.6	0.75	18.0	27.0	12960.0		X	
057-0010	I-55/I-74 SB	SUGAR CREEK	283.8	65.6	281.5	62.4	17563.7	30.0	30.0	62.4	0.0	65.6	3744.0	3.60	281.5	21.0	2329.0	0.75	18.0	27.0	23664.0		X	
057-0011	I-55/I-74 NB	SUGAR CREEK	283.8	65.6	281.5	62.4	17563.7	30.0	30.0	62.4	0.0	65.6	3744.0	3.60	281.5	21.0	2329.0	0.75	18.0	27.0	23664.0		X	
057-0016	I-55/I-74 NB	WASH.ST/FAU 6360	183.3	72.3	181.0	69.1	12505.0	30.0	30.0	69.1	0.0	72.3	4146.0	3.60	181.0	21.0	1605.4	0.75	18.0	27.0	18284.0		X	
057-0017	I-55/I-74 SB	WASH.ST/FAU 6360	183.3	72.3	181.0	69.1	12505.0	30.0	30.0	69.1	0.0	72.3	4146.0	3.60	181.0	21.0	1605.4	0.75	18.0	27.0	18284.0		X	
057-0018	I-55/I-74 NB	OLD 150 & N&W RR	448.0	65.1	445.7	61.9	27587.0	30.0	30.0	61.9	0.0	65.1	3714.0	3.60	445.7	21.0	3511.2	0.75	18.0	27.0	34840.0		X	
057-0019	I-55/I-74 SB	OLD 150 & N&W RR	448.0	65.1	445.7	61.9	27587.0	30.0	30.0	61.9	0.0	65.1	3714.0	3.60	445.7	21.0	3511.2	0.75	18.0	27.0	34840.0		X	
057-0022	I-55 NW BLOOMINGTON	I-74	177.8	79.1	175.5	75.9	13318.2	0.0	0.0	75.9	0.0	79.1	0.0	3.60	175.5	16.0	1493.8	0.75	0.0	0.0	14812.0		X	X
057-0023	I-55 NW BLOOMINGTON	I-74	177.8	68.0	175.5	64.8	11370.5	0.0	0.0	64.8	0.0	68.0	0.0	5.60	175.5	16.0	2323.7	0.75	0.0	0.0	13695.0		X	X
057-0024	I-55 NB& CD#2284	US 51B N NORMAL	208.6	52.7	206.3	77.6	16006.6	0.0	0.0	77.6	0.0	52.7	0.0	3.60	206.3	0.0	1485.1	0.75	0.0	0.0	17492.0		X	X
057-0025	I-55 SB & CD#2287	US 51B N NORMAL	208.6	52.7	206.3	118.8	24504.9	0.0	0.0	118.8	0.0	52.7	0.0	7.00	206.3	0.0	2887.8	0.75	0.0	0.0	27393.0		X	X
057-0043	I-74	ROCK CREEK	85.0	44.3	82.7	39.0	3224.1	0.0	0.0	39.0	0.0	44.3	0.0	3.45	82.7	0.0	570.4	0.00	0.0	0.0	3795.0	X		
057-0044	I-74	ROCK CREEK	85.0	44.3	82.7	39.0	3224.1	0.0	0.0	39.0	0.0	44.3	0.0	3.45	82.7	0.0	570.4	0.00	0.0	0.0	3795.0	X		
057-0047	I-74 EB	US 51/S.OF BLOOMNGTN	181.0	53.7	178.7	50.5	9022.8	0.0	0.0	50.5	0.0	53.7	0.0	3.60	178.7	15.0	1502.4	0.00	0.0	0.0	10526.0		X	
057-0048	I-74 WB	US 51/S.OF BLOOMNGTN	181.0	53.7	178.7	50.5	9022.8	0.0	0.0	50.5	0.0	53.7	0.0	3.60	178.7	15.0	1502.4	0.00	0.0	0.0	10526.0		X	
057-0063	I-55 BUSN LOOP	US 51 AT BLOOMINGTON	167.0	59.5	163.7	56.0	9167.2	20.0	20.0	56.0	0.0	59.5	2240.0	4.30	163.7	20.0	1751.8	0.75	163.7	491.1	13651.0		X	X
057-0064	I-55 BUSN LOOP	CON-RAIL CORP. RR	306.0	59.5	303.2	56.0	16979.2	7.0	7.0	56.0	0.0	59.5	784.0	4.30	303.2	7.0	2727.9	0.75	303.2	909.6	21401.0		X	X
057-0069	I-55 BUSN LOOP	OLD RT 66/ICG RR	442.0	86.9	436.9	83.7	36568.5	30.0	12.0	83.7	18.0	86.9	5137.2	3.60	436.9	12.0	3318.5	0.75	18.0	54.0	45079.0		X	X
057-0073	US 150	FAI 74	278.5	89.2	278.5	87.0	24229.5	75.0	20.0	87.0	55.0	87.0	13050.0	3.75	278.5	11.5	2261.3	1.00	34.5	138.0	39679.0	X		X
057-0088	ILL 9	I-55/I-74	268.0	109.5	268.0	107.8	28890.4	30.0	11.0	109.5	19.0	109.5	6570.0	3.85	268.0	11.0	2233.0	1.25	8.0	40.0	37734.0		X	X
057-0105	FAS 1473	I-74	226.0	31.8	226.0	26.0	5876.0	0.0	0.0	0.0	0.0	0.0	0.0	5.08	226.0	0.0	2296.2	0.00	0.0	0.0	0.0	-	X	X
057-0111	WEST OAKLAND CH RD	I-55/I-74	262.0	31.7	268.0	26.0	6968.0	0.0	0.0	0.0	0.0	0.0	0.0	5.08	268.0	0.0	2722.9	0.00	0.0	0.0	9691.0		X	X
057-0112	TR 90	I-74	304.0	30.5	304.0	24.0	7296.0	0.0	0.0	0.0	0.0	0.0	0.0	3.75	304.0	0.0	2280.0	0.00	0.0	0.0	9576.0	X		X
057-0113	COUNTY ROAD TR 76	I-74	286.0	30.0	286.0	24.0	6864.0	0.0	0.0	0.0	0.0	0.0	0.0	3.75	286.0	0.0	2145.0	0.00	0.0	0.0	9009.0	X		X
057-0114	TR 104	I-74	306.0	29.9	306.0	24.0	7344.0	0.0	0.0	0.0	0.0	0.0	0.0	3.75	306.0	0.0	2295.0	0.00	0.0	0.0	9639.0	X		X
057-0115	TR 201	I-74	277.0	29.7	277.0	24.0	6648.0	0.0	0.0	0.0	0.0	0.0	0.0	3.75	277.0	0.0	2077.5	0.00	0.0	0.0	8726.0	X		X
057-0116	TR 210	I-74/S.OF BLOOMNGTN	224.0	29.8	224.0	24.0	5376.0	0.0	0.0	0.0	0.0	0.0	0.0	5.08	224.0	0.0	2275.8	0.00	0.0	0.0	7652.0		X	X
057-0118	TOWANDA RD	I-55	221.0	29.9	221.0	24.0	5304.0	0.0	0.0	0.0	0.0	0.0	0.0	5.08	221.0	0.0	2245.4	0.00	0.0	0.0	0.0		X	X
057-0188	US 51 SB	SUGAR CREEK	90.7	42.0	89.7	30.0	2691.0	0.0	0.0	0.0	0.0	0.0	0.0	8.08	89.7	0.0	1449.6	0.00	0.0	0.0	4141.0		X	
057-0190	ILL 9	SUGAR CREEK	89.3	75.0	89.3	70.0	6251.0	0.0	0.0	0.0	0.0	0.0	0.0	7.50	89.3	0.0	1339.5	0.00	0.0	0.0	0.0		X	X
057-0202	US 150/FAP 676& SPUR	N&W RR/WHITE OAK RD	410.0	90.2	410.0	90.2	36982.0	100.0	0.0	66.0	100.0	66.0	13200.0	3.67	410.0	0.0	3009.4	1.50	100.0	600.0	53792.0		X	X
057-0203	I-39/US 51	MACKINAW RIVER	431.7	93.1	429.4	87.8	37698.7	0.0	0.0	87.8	0.0	91.0	0.0	3.60	429.4	230.7	6413.5	0.00	18.0	0.0	0.0	X		X
057-0204	CH 8 & FAS 473 CH 8	I-39/US 51	231.7	65.1	231.7	63.0	14597.1	20.0	0.0	63.0	20.0	63.0	2520.0	3.75	231.7	0.0	1737.8	1.00	20.0	80.0	18935.0	X		X

MODEL: I:\MODEL\MHFS FILE: MHFS_Plan\Subcontractor\Project\DOT_Civil\Drawings\Structure\057079_rht-schedule.dgn

USER NAME = brandenburgtj	DESIGNED - TJB	REVISED - _____
	DRAWN - _____	REVISED - _____
PLOT SCALE = 40,0000 * / in.	CHECKED - _____	REVISED - _____
PLOT DATE = 12/15/2021	DATE - 2/25/2021	REVISED - _____

**STATE OF ILLINOIS
DEPARTMENT OF TRANSPORTATION**

MCLEAN COUNTY SCHEDULE OF QUANTITIES			
SCALE: _____	SHEET 1	OF 4 SHEETS	STA. _____ TO STA. _____

F.A. RTE.	SECTION	COUNTY	TOTAL SHEETS	SHEET NO.
VAR.	FY22 BRIDGE DECK SEALING	VARIOUS	16	13
CONTRACT NO. 70E79				
ILLINOIS		FED. AID PROJECT		

MCLEAN COUNTY STRUCTURES SCHEDULE OF QUANTITIES																								
ACTUAL MEASUREMENTS																								
SN	ROUTE CARRIED	FEATURE CROSSED	SIMS INFORMATION		DECK			APPROACH SLABS				PARAPETS (HUB, FACE & TOP)				TYPE B CURB (FACE & TOP)			TOTAL (SQ FT)	RURAL	URBAN MPO B-N	FIELD MEASURED		
			LENGTH	WIDTH	LENGTH (E-E)	WIDTH (F-F)	AREA (SQ FT)	LENGTH (FT)	DIMENSIONS INSIDE PARAPET / CURB		DIMENSIONS BEYOND PARAPET / CURB		AREA (SQ FT)	HEIGHT	LENGTH (FT)		AREA (SQ FT)	HEIGHT					LENGTH	AREA (SQ FT)
									LENGTH	WIDTH	LENGTH	WIDTH			3.6 FT TYPICAL	ALONG DECK								
057-0205	I-39/US 51 NB	FAS 472 CH 12	169.9	43.1	167.6	40.0	6702.8	0.0	0.0	40.0	0.0	43.1	0.0	3.60	167.6	0.0	1206.5	0.75	12.0	36.0	0.0	X	X	
057-0206	I-39/US 51 SB	FAS 472 CH 12	169.8	43.1	167.5	40.0	6698.8	0.0	0.0	40.0	0.0	43.1	0.0	3.60	167.5	0.0	1205.8	0.75	12.0	36.0	0.0	X	X	
057-0208	I-39/US 51 SB	SIX MILE CREEK	149.8	43.1	149.5	40.0	5980.0	30.0	0.0	40.0	30.0	43.1	2586.0	3.60	149.5	0.0	1076.4	0.75	30.0	90.0	9733.0	X	X	
057-0209	I-39/US 51 NB	SIX MILE CREEK	149.8	43.1	149.5	40.0	5980.0	0.0	0.0	40.0	0.0	43.1	0.0	3.60	149.5	0.0	1076.4	0.75	12.0	36.0	7093.0	X	X	
057-0210	I-39/US 51 SB	TRIB SIX MILE CREEK	70.6	43.1	70.5	40.0	2820.0	30.0	0.0	40.0	30.0	43.1	2586.0	3.60	70.5	0.0	507.6	0.75	30.0	90.0	6004.0	X	X	
057-0211	I-39/US 51 NB	TRIB SIX MILE CREEK	70.6	43.1	70.5	40.0	2820.0	0.0	0.0	40.0	0.0	43.1	0.0	3.60	70.5	0.0	507.6	0.75	12.0	36.0	3364.0	X	X	
057-0212	TR 157A	I-39/US 51 SUBSTA RD	229.0	31.1	229.0	28.0	6412.0	0.0	0.0	0.0	0.0	0.0	0.0	3.66	229.0	0.0	1676.3	0.00	0.0	0.0	8089.0	X	X	
057-0213	TR#181 (BUSN. 51)	I-39/US 51	229.0	85.1	229.0	83.3	19082.6	20.0	0.0	83.3	20.0	83.3	3333.2	3.66	229.0	0.0	1676.3	1.00	20.0	80.0	24173.0		X	
057-0214	I-39 RAMP 816 SB	I-55& CD#2284/2287	1600.0	26.0	270.6	26.0	7035.6	0.0	0.0	26.0	0.0	29.3	0.0	3.60	270.6	0.0	1948.3	1.00	12.0	48.0	9032.0		X	
057-0215	I-39 NB	I-55 & CD#2284/2287	274.7	43.3	272.4	40.0	10894.8	0.0	0.0	40.0	0.0	43.3	0.0	3.60	272.4	0.0	1961.1	1.00	12.0	48.0	12904.0		X	
057-0216	I-39 SB	NORTHTOWN RD TR 201B	154.6	62.0	152.3	61.5	9364.6	0.0	0.0	61.5	0.0	64.7	0.0	3.60	152.3	0.0	1096.3	0.75	12.0	36.0	10497.0		X	
057-0217	I-39 NB	NORTHTOWN RD TR 201B	154.0	43.1	151.7	40.0	6066.8	0.0	0.0	40.0	0.0	43.1	0.0	3.60	151.7	0.0	1092.0	0.75	12.0	36.0	7195.0		X	
057-0223	FAS 471 (YUTAN RD)	I-55 & I-74	317.3	43.1	317.3	40.0	12692.0	50.0	17.0	40.0	33.0	40.0	4000.0	4.00	317.3	17.0	2810.4	1.00	5.0	20.0	19523.0		X	
057-0226	US 51	MACKINAW RIVER	433.7	35.2	428.8	32.0	13721.6	0.0	0.0	32.0	0.0	35.2	0.0	3.60	428.8	16.0	3317.8	0.75	0.0	0.0	17040.0	X	X	
057-0227	IL 9 & US 150	SPCSL RR	115.0	72.3	115.8	56.0	6483.7	30.0	30.0	56.0	0.0	56.0	3360.0	5.06	115.7	60.0	2385.3	0.00	0.0	0.0	12229.0		X	
057-0228	I-55 BUSN LP NB & SB	SUGAR CR & BIKE PATH	183.1	132.7	178.8	129.4	23136.7	30.0	13.5	129.4	16.5	132.7	7872.9	3.60	178.8	13.5	1481.8	0.75	16.5	49.5	32541.0		X	
057-0231	FAU6383/6371BEICH	I-55/I-74	398.0	71.1	398.0	51.2	20377.6	30.0	30.0	51.2	0.0	51.2	3072.0	3.75	398.0	30.0	3435.0	0.00	0.0	0.0	26885.0		X	
057-0233	I-55/I-74 NB	COUNTY RD SUDDITH RD	156.0	65.1	153.7	61.9	9512.2	30.0	15.0	61.9	15.0	65.1	3810.0	3.60	153.7	15.0	1322.4	0.75	15.0	45.0	14690.0		X	
057-0234	I-55/I-74 SB	COUNTY RD SUDDITH RD	156.0	65.1	153.7	61.9	9512.2	30.0	15.0	61.9	15.0	65.1	3810.0	3.60	153.7	15.0	1322.4	0.75	15.0	45.0	14690.0		X	
057-0235	I-55 NB	FAU 6405/LINDEN	151.5	65.0	151.5	61.8	9362.7	30.0	30.0	61.8	0.0	65.0	3708.0	3.60	151.5	30.0	1522.8	0.75	15.0	45.0	14639.0		X	
057-0236	I-55 SB	FAU 6405/LINDEN	151.5	65.0	151.5	61.8	9362.7	30.0	30.0	61.8	0.0	65.0	3708.0	3.60	151.5	30.0	1522.8	0.75	15.0	45.0	14639.0		X	
057-0237	I-55 NB	FAP 704	213.7	72.8	211.4	69.6	14711.4	30.0	15.0	69.6	15.0	70.8	4212.0	3.60	211.4	15.0	1737.9	0.75	15.0	45.0	20707.0		X	
057-0238	I-55 SB	FAP 704	215.3	64.9	213.0	61.7	13140.2	30.0	15.0	61.7	15.0	62.9	3738.0	3.60	213.0	15.0	1749.4	0.75	15.0	45.0	18673.0		X	
057-0240	IL RT 9	KINGS CREEK	145.0	42.6	145.0	39.4	5713.0	30.0	0.0	39.4	30.0	39.4	2364.0	3.75	145.0	0.0	1087.5	1.00	30.0	120.0	9285.0	X	X	
057-0242	ILL 9	WEST FORK SUGAR CR	80.0	35.2	80.0	32.0	2560.0	30.0	0.0	32.0	30.0	32.0	1920.0	3.66	80.0	0.0	585.6	1.00	30.0	120.0	5186.0	X	X	
057-0249	I-55 NBL	I-55 BUSN LOOP	200.0	46.7	200.0	43.5	8700.0	30.0	0.0	44.8	30.0	44.8	2688.0	3.60	200.0	0.0	1440.0	0.75	30.0	90.0	12918.0		X	
057-0250	I-55 NBL	EB I-74/SW BLOOM.	295.0	45.2	292.7	42.0	12292.1	30.0	15.0	42.0	15.0	43.8	2574.0	3.60	292.7	15.0	2323.2	0.75	15.0	45.0	17235.0		X	
057-0251	I-55 BUSN LOOP NB	I-74/SW BLOOMINGTON	183.0	62.2	183.0	59.0	10797.0	30.0	0.0	59.0	30.0	61.2	3672.0	3.60	183.0	0.0	1317.6	0.75	30.0	90.0	15877.0		X	
057-0252	I-55 BUSN LOOP SB	I-74/SW BLOOMINGTON	183.0	53.3	183.0	50.1	9168.3	30.0	0.0	50.1	30.0	52.3	3138.0	3.60	183.0	0.0	1317.6	0.75	30.0	90.0	13714.0		X	
057-0253	I-55 BUSN LOOP NB	I-74/SW BLOOMINGTON	204.5	50.9	204.5	47.7	9754.7	30.0	0.0	47.7	30.0	49.9	2994.0	3.60	204.5	0.0	1472.4	0.75	30.0	90.0	14312.0		X	
057-0254	I-55 BUSN LOOP SB	I-74/SW BLOOMINGTON	204.5	55.6	204.5	52.4	10715.8	30.0	0.0	52.4	30.0	54.6	3276.0	3.60	204.5	0.0	1472.4	0.75	30.0	90.0	15555.0		X	
057-0256	US 51 BUSN NB	SUGAR CREEK	99.5	46.0	98.5	44.0	4334.0	30.0	15.0	44.0	15.0	44.0	2640.0	2.42	98.5	15.0	621.9	0.75	15.0	45.0	7641.0		X	
057-6301	US 51 SB CENTER ST	N&W RR/CONRAIL CORP.	647.6	42.0	647.6	30.0	0.0	30.0	30.0	30.0	0.0	30.0	0.0	8.42	647.6	30.0	11916.0	0.00	0.0	0.0	11916.0		X	
63	AS-BUILT CORRECTIONS FROM 70919 IN 2015 AND 70C72 IN 2018 NOTED AS FIELD MEASURED; NO AS-BUILT CORRECTIONS FROM CONTRACTS 70979 IN 2016 OR 70B94 IN 2017																TOTALS (SQ FT)			1,040,744	168,948	871,796		
	057-0105 & 0118 DECK RATINGS ARE "4"; MUST BE >= "5" FOR BRIDGE PRESERVATION DECK SEALING																							
	057-0190, 0203, 0205 & 0206 ARE BRIDGE DECK OVERLAYS IN THE MYP AND WILL BE SKIPPED WITH THIS CONTRACT																EST. WD'S (80,000 SQ FT/DAY)			13	2	11		
	057-6301 HAS HFST ON THE DECK AND APPROACHES, HOWEVER STILL APPLY BRIDGE DECK SEALING TO PARAPETS AND RAISED SIDEWALKS																							

MODEL: I:\MODEL\MMFE
 FILE: MMFE_Plan\Subcontract\beachy.com\PIV\DOT\Documents\DOT Office\Dir\Dir: S:\Project\057079\CADD\Drawings\Structures\057079-Sub-Structure.dgn

USER NAME = brandenburgjt	DESIGNED - TJB	REVISED - _____
	DRAWN - _____	REVISED - _____
PLOT SCALE = 40,0000 */ in.	CHECKED - _____	REVISED - _____
PLOT DATE = 12/16/2021	DATE - 2/25/2021	REVISED - _____

STATE OF ILLINOIS
DEPARTMENT OF TRANSPORTATION

MCLEAN COUNTY		F.A. RTE. _____	SECTION _____	COUNTY _____	TOTAL SHEETS _____	SHEET NO. _____
SCHEDULE OF QUANTITIES		VAR. _____	FY22 BRIDGE DECK SEALING	VARIOUS	16	14
SCALE: _____		SHEET 2 OF 4 SHEETS		STA. _____ TO STA. _____		CONTRACT NO. 70E79
ILLINOIS FED. AID PROJECT						

MCLEAN COUNTY STRUCTURES SCHEDULE OF QUANTITIES														
TRAFFIC CONTROL & PROTECTION											PROSECUTION & PROGRESS		RURAL	URBAN MPO B-N
701201	701411 (DL ONLY)	701426 SPECIAL >=45pmh	701427 SPECIAL <=40mph	701401	701446	LOCATION	SUMMARY	CHANGEABLE MESSAGE SIGN (Calendar Days)	ESTIMATED WORKING DAYS	ESTIMATED PROSECUTION				
SN	ROUTE CARRIED	FEATURE CROSSED												
057-0047	I-74 EB	US 51/S.OF BLOOMNGTN			2				0.5	2 HRS PER LOC.			X	
057-0048	I-74 WB	US 51/S.OF BLOOMNGTN			2								X	
057-0249	I-55 NBL	I-55 BUSN LOOP							0.5	2 HRS PER LOC.			X	
057-0250	I-55 NBL	EB I-74/SW BLOOM.			2								X	
057-0006	I-55/I-74	OVER UPRR			1								X	
057-0007	I-55/I-74 NB	ICG RR					1						X	
057-0008	I-55/I-74 NB	SIX PTS RD/FAU 6369					1		1	2 HRS PER LOC.			X	
057-0009	I-55/I-74 SB	SIX PTS.RD/FAU 6369			1								X	
057-0010	I-55/I-74 SB	SUGAR CREEK			1								X	
057-0011	I-55/I-74 NB	SUGAR CREEK					1						X	
057-0016	I-55/I-74 NB	WASH.ST/FAU 6360		1			1		1	2 HRS PER LOC.			X	
057-0017	I-55/I-74 SB	WASH.ST/FAU 6360		2			1						X	
057-0018	I-55/I-74 NB	OLD 150 & N&W RR					1						X	
057-0019	I-55/I-74 SB	OLD 150 & N&W RR										1	X	
057-0233	I-55/I-74 NB	COUNTY RD SUDDITH RD										1	X	
057-0234	I-55/I-74 SB	COUNTY RD SUDDITH RD					1						X	
057-0022	I-55 NW BLOOMINGTON	I-74		1			1	1					X	
057-0023	I-55 NW BLOOMINGTON	I-74					1	1					X	
057-0024	I-55 NB& CD#2284	US 51B N NORMAL		1			1						X	
057-0025	I-55 SB & CD#2287	US 51B N NORMAL		1				1					X	
057-0235	I-55 NB	FAU 6405/LINDEN						1					X	
057-0236	I-55 SB	FAU 6405/LINDEN					1						X	
057-0237	I-55 NB	FAP 704		2			1	1					X	
057-0238	I-55 SB	FAP 704		2			1	1	0.5	2 HRS PER LOC.			X	
057-0251	I-55 BUSN LOOP NB	I-74/SW BLOOMINGTON		2			2						X	
057-0252	I-55 BUSN LOOP SB	I-74/SW BLOOMINGTON					INCL.						X	
057-0253	I-55 BUSN LOOP NB	I-74/SW BLOOMINGTON		2			INCL.						X	
057-0254	I-55 BUSN LOOP SB	I-74/SW BLOOMINGTON		1			2						X	
057-0063	I-55 BUSN LOOP	US 51 AT BLOOMINGTON		1			2						X	
057-0064	I-55 BUSN LOOP	CON-RAIL CORP. RR		1			2						X	
057-0228	I-55 BUSN LP NB & SB	SUGAR CR & BIKE PATH					2	2					X	
057-0069	I-55 BUSN LOOP	OLD RT 66/ICG RR					2	2					X	
057-0088	ILL 9	I-55/I-74		4			4						X	
057-0190	ILL 9	SUGAR CREEK					0						X	
057-0227	ILL 9 & US 150	SPCSL RR					2						X	
057-0188	US 51 SB	SUGAR CREEK					2						X	
057-0256	US 51 BUSN NB	SUGAR CREEK					2						X	
057-6301	US 51 SB CENTER ST	N&W RR/CONRAIL CORP					2						X	

MODEL: \\MODEL\MHFE
 FILE: \\MAILS_PUB\Public\bea\mfe\com\PIV\DOT\Documents\DOT_Offices\Dir\Dir: 5\Project\0570E79\ICD\data\Hydro\files\0570E79_sht-schedule.dgn

USER NAME = brandenburgtj	DESIGNED - TJB	REVISED - _____
DRAWN - _____	REVISIONS - _____	
PLOT SCALE = 40,0000 * / in.	CHECKED - _____	REVISED - _____
PLOT DATE = 12/16/2021	DATE - 2/25/2021	REVISED - _____

**STATE OF ILLINOIS
DEPARTMENT OF TRANSPORTATION**

**MCLEAN COUNTY
SCHEDULE OF QUANTITIES**

SCALE: _____ SHEET 3 OF 4 SHEETS STA. _____ TO STA. _____

F.A. RTE.	SECTION	COUNTY	TOTAL SHEETS	SHEET NO.
VAR.	FY22 BRIDGE DECK SEALING	VARIOUS	16	15
			CONTRACT NO. 70E79	
		ILLINOIS	FED. AID PROJECT	

MCLEAN COUNTY STRUCTURES SCHEDULE OF QUANTITIES																			
TRAFFIC CONTROL & PROTECTION																			
PROSECUTION & PROGRESS																			
SN	ROUTE CARRIED	FEATURE CROSSED	701201	701411 (DL ONLY)	701426 SPECIAL >=45pmh	701427 SPECIAL <=40mph	701401	701446	LOCATION	SUMMARY	CHANGEABLE MESSAGE SIGN (Calendar Days)	ESTIMATED WORKING DAYS	ESTIMATED PROSECUTION	RURAL	URBAN				
057-0111	WEST OAKLAND CH RD	I-55/I-74	2						M4	6-701201; 2-701427	NO CMS REQUIRED	1	2 HRS PER LOC.		X				
057-0231	FAU 6383/6371 BEICH	I-55/I-74				2													X
057-0116	TR 210	I-74/ S. OF BLOOMINGTON	2																X
057-0105	FAS 1473	I-74	0															-	X
057-0118	I-55/I-74	OLD 150 & N&W RR	0																X
057-0223	FAS 471 (YUTAN RD)	I-55 & I-74	2																X
057-0202	US 150/FAP 676 & SPUR	N&W RR/WHITE OAK RD				2			M5	4-701427	NO CMS REQUIRED	0.5	2 HRS PER LOC.		X				
057-0073	US 150	I-74				2									X				
057-0113	COUNTY ROAD TR 76	I-74	2												X				
057-0112	TR 90	I-74	2												X				
057-0114	TR 104	I-74	2												X				
057-0115	TR 201	I-74	2												X				
057-0043	I-74	ROCK CREEK			2						4-701426	1-CMS ON FAI 74 PER DIRECTION; 3 DAYS PRIOR & DURING; TOTAL 7 DAYS	0.5	2 HRS PER LOC.	X				
057-0044	I-74	ROCK CREEK			2										X				
057-0242	ILL 9	WEST FORK SUGAR RD	2								4-701201	NO CMS REQUIRED	0.5	2 HRS PER LOC.	X				
057-0240	ILL RT 9	KINGS CREEK	2												X				
057-0214	I-39 RAMP 816 SB	I-55& CD#2284/2287				INLC.			M6	4-701426; 2-701411	1-CMS PLACED IN ADVANCE OF WORK AREA PER DIRECTION ON FAI 39 AS DIRECTED BY ENGINEER; DUAL DISPLAY NOT NEEDED; PLACE 3 CAL. DAYS PRIOR TO & DURING WORK; TOTAL 2 CMS AT 5 DAYS EACH = 10 DAYS	1	2 HRS PER LOC.		X				
057-0215	I-39 NB	I-55 & CD#2284/2287		1	2													X	
057-0216	I-39 SB	NORTHTOWN RD TR 201B		1	2													X	
057-0217	I-39 NB	NORTHTOWN RD TR 201B				INLC.												X	
057-0205	I-39/US 51 NB	FAS 472-CH 12		0	INLC.													X	
057-0206	I-39/US 51 SB	FAS 472-CH 12		0	0													X	
057-0208	I-39/US 51 SB	SIX MILE CREEK		2	2													X	
057-0209	I-39/US 51 NB	SIX MILE CREEK				INLC.												X	
057-0210	I-39/US 51 SB	TRIB SIX MILE CREEK				INLC.												X	
057-0211	I-39/US 51 NB	TRIB SIX MILE CREEK				2												X	
057-0203	I-39/US 51	MACKINAW RIVER		-	0					4-701426		0	2 HRS PER LOC.	X					
057 0226	US 51	MACKINAW RIVER	2											X					
057-0204	CH 8 & FAS 473 CH 8	I-39/US 51	2							6-701201; 4-701426	NO CMS REQUIRED	0.5	2 HRS PER LOC.	X					
057-0212	TR 157A	I-39/US 51 SUBSTA RD	2											X					
057-0213	TR#181 (BUSN. 51)	I-39/ US 51				4									X				
TC&P SET-UPS & CMS CALENDAR DAYS			24	29	16	18	32	16			75	15							
ESTIMATED WORKING DAYS PER STANDARD			3	11	3	2	8	5			USE AT RE'S DIRECTION	ESTIMATED							

MODEL: I:\MODEL\MHMF
 FILE: MHMF_Plan\Subcontract\beaufay.com\PIV\DOT\Documents\DOT_Offices\Dir\dr: S:\Project\0570E79\IC\DD\data\Hydro\Files\0570E79-shr-schedule.dgn

USER NAME = brandenburgjt	DESIGNED - TJB	REVISED - _____
	DRAWN - _____	REVISED - _____
PLOT SCALE = 40,0000 * / in.	CHECKED - _____	REVISED - _____
PLOT DATE = 12/16/2021	DATE - 2/25/2021	REVISED - _____

**STATE OF ILLINOIS
DEPARTMENT OF TRANSPORTATION**

**MCLEAN COUNTY
SCHEDULE OF QUANTITIES**

SCALE: _____ SHEET 4 OF 4 SHEETS STA. _____ TO STA. _____

F.A. RTE.	SECTION	COUNTY	TOTAL SHEETS	SHEET NO.
VAR.	FY22 BRIDGE DECK SEALING	VARIOUS	16	16
			CONTRACT NO. 70E79	
		ILLINOIS	FED. AID PROJECT	