

FOR INDEX OF SHEETS, SEE SHEET NO 2

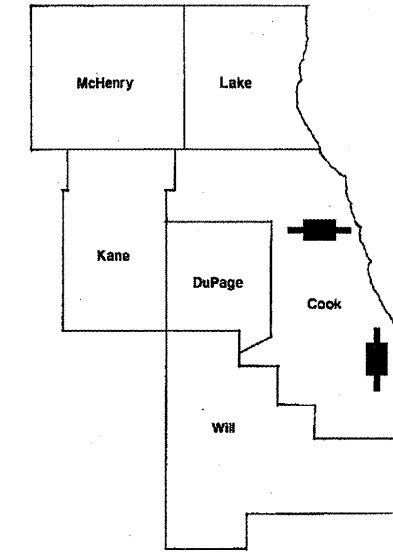
ROUTE	SECTION	COUNTY	TOTAL SHEETS	SHEET NUMBER
VARIOUS	2009-074 I	COOK	12	1

IMPROVEMENTS ARE LOCATED IN THE VILLAGES OF BURNHAM AND SKOKIE .

CONTRACT 60H85

D-91-821-09

**STATE OF ILLINOIS  
DEPARTMENT OF TRANSPORTATION  
DIVISION OF HIGHWAYS  
DISTRICT ONE  
PROPOSED HIGHWAY PLANS**



LOCATION OF IMPROVEMENT INDICATED THUS:

**TRAFFIC DATA**

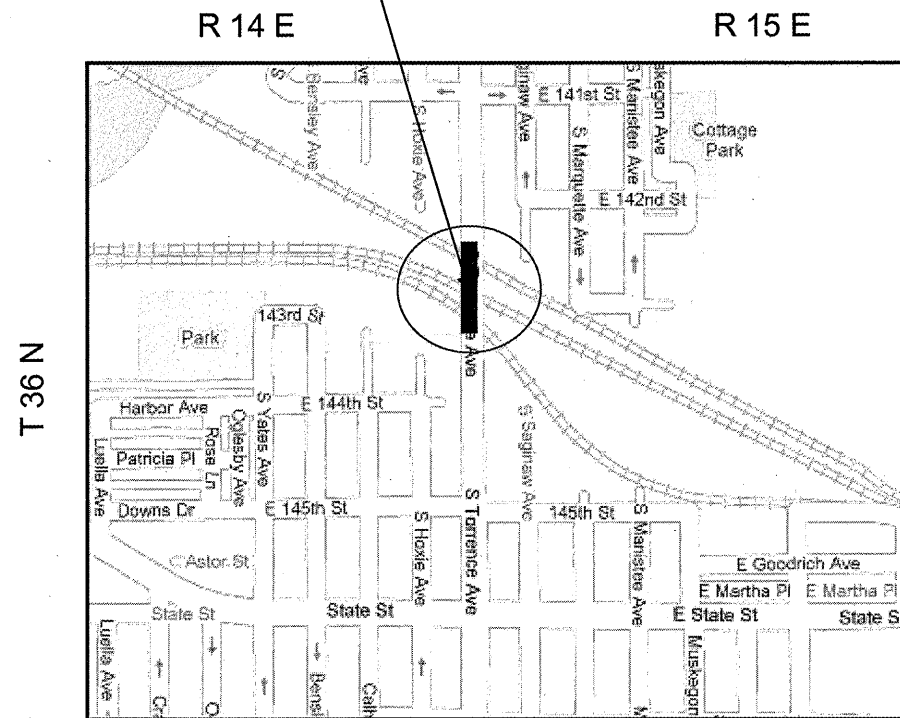
LOCATION 1: TORRENCE AVE  
2006 ADT = 12,800  
POSTED SPEED LIMIT = 40 MPH

LOCATION 2: DEMPSTER ST  
2007 ADT = 30,100  
POSTED SPEED LIMIT = 35 MPH

I-94  
2007 ADT = 161,000  
POSTED SPEED LIMIT = 55 MPH

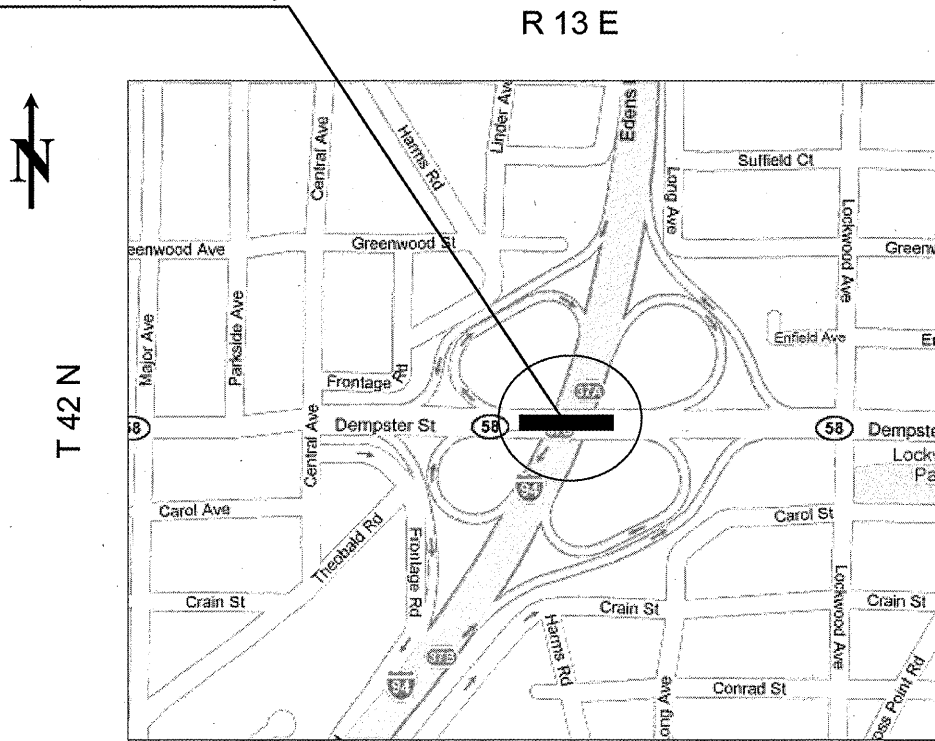
VARIOUS ROUTES  
LOCATION 1 : TORRENCE AVE OVER CSXT & IHB RR (SN 016-0935)  
LOCATION 2 : IL 58 (DEMPSTER ST) OVER FAI-94 (SN 016-0943)  
SECTION: 2009 - 074 I  
EROSION CONTROL & BRIDGE SLOPEWALL REPAIR  
COOK COUNTY  
C-91-821-09

LOCATION 1 (SN 016-0935)



THORNTON TOWNSHIP

LOCATION 2 (SN 016-0943)



NILES TOWNSHIP

PROJECT ENGINEER: ROBERT BORO (847) 705-4178  
PROJECT MANAGER: KEN ENG

CONTRACT 60H85

**STATE OF ILLINOIS  
DEPARTMENT OF TRANSPORTATION  
DIVISION OF HIGHWAYS**

SUBMITTED: FEBRUARY 12, 2010  
*Diana M. O'Keefe* DEPUTY DIRECTOR OF HIGHWAYS, REGION ENGINEER  
March 19 2010  
*Scott E. Stitt, P.E.* ACTING ENGINEER OF DESIGN AND ENVIRONMENT  
March 19 2010  
*Christine M. Reed* DIRECTOR, DIVISION OF HIGHWAYS

**PRINTED BY THE AUTHORITY  
OF THE STATE OF ILLINOIS**

J.U.L.I.E. JOINT UTILITY LOCATION  
INFORMATION FOR EXCAVATION  
(800) 892 - 0123 OR 811

ROUTE	SECTION	COUNTY	TOTAL SHEETS	SHEET NUMBER
VARIOUS	2009-074 I	COOK	12	2

CONTRACT 60H85

## LIST OF STATE STANDARDS

## INDEX OF SHEETS

<u>STANDARD NO</u>	<u>DESCRIPTION</u>	<u>SHEET NO</u>	<u>DESCRIPTION</u>
		1	COVER SHEET
701101-02	OFF ROAD OPERATIONS, MULTILANE, 15' TO 24' FROM PAVEMENT EDGE	2	INDEX OF SHEETS, STATE STANDARDS
701106-02	OFF ROAD OPERATIONS, MULTILANE, MORE THAN 15' AWAY	3	GENERAL NOTES
701400-04	APPROACH TO LANE CLOSURE, FREEWAY / EXPRESSWAY	4	SUMMARY OF QUANTITIES
701401-05	LANE CLOSURE, FREEWAY / EXPRESSWAY	5-6	BRIDGE PLANS (LOC. 1, SN 016-0935)
701411-06	LANE CLOSURE, MULTILANE, AT ANTRANCE OR EXIT RAMP, FOR SPEEDS > 45 MPH	7-9	BRIDGE PLANS (LOC. 2, SN 016-0943)
701601-06	URBAN LANE CLOSURE, MULTILANE, 1W OR 2W WITH NONTRAVERSABLE MEDIAN	10	FREEWAY ENTRANCE AND EXIST. RAMP CLOSURE DETAILS (TC-8)
701606-06	URBAN LANE CLOSURE, MULTILANE, 2W WITH MOUNTABLE MEDIAN	11	TRAFFIC CONTROL DETAILS FOR FREEWAY SHOULDER CLOSURES AND PARTIAL RAMP CLOSURES (TC-17)
701801-04	LANE CLOSURE MULTILANE 1W OR 2W CROSSWALK OR SIDEWALK CLOSURE	12	ARTERIAL ROAD INFORMATION SIGN (TC-22)
701901-01	TRAFFIC CONTROL DEVICES		

ILLINOIS DEPARTMENT OF  
TRANSPORTATION  
  
INDEX OF SHEETS, STATE STANDARDS

ROUTE	SECTION	COUNTY	TOTAL SHEETS	SHEET NUMBER
VARIOUS	2009-074 I	COOK	12	3

CONTRACT 60H85

## GENERAL NOTES

BEFORE STARTING ANY EXCAVATION, THE CONTRACTOR SHALL CALL "J.U.L.I.E" AT (800) 892-0123 OR 811 FOR FIELD LOCATIONS OF BURIED ELECTRIC, TELEPHONE AND GAS UTILITIES. 48 HOUR NOTIFICATION IS REQUIRED.

THE CONTRACTOR SHALL TAKE ALL NECESSARY PRECAUTIONS FOR THE PROTECTION OF EXISTING PETROLEUM PIPELINE WHEN WORKING AT LOCATION 1 (SN 016-0935) NEAR THE PIER 1 AND SHALL NOTIFY ONEOK NORTH PETROLEUM PIPELINE CO AT (888) 844-5658.

THE CONTRACTOR WILL NOT BE ALLOWED TO SET UP A YARD OR FIELD OFFICE ON STATE PROPERTY WITHOUT WRITTEN PERMISSION FROM THE DEPARTMENT.

THE CONTRACTOR SHALL COORDINATE CONSTRUCTION ACTIVITIES WITH UTILITY COMPANIES AND THE VILLAGES OF BURNHAM AND SKOKIE.

PLAN DIMENSIONS AND DETAILS RELATIVE TO EXISTING PLANS ARE SUBJECT TO ROUTINE VARIATIONS. THE CONTRACTOR SHALL FIELD VERIFY EXISTING DIMENSIONS AND DETAILS AFFECTING NEW CONSTRUCTION, EXCEPT THE PIN DIAMETERS, AND MAKE NECESSARY APPROVED ADJUSTMENTS PRIOR TO CONSTRUCTION OR ORDERING OF MATERIALS. SUCH VARIATIONS SHALL NOT BE CAUSE FOR ADDITIONAL COMPENSATION FOR A CHANGE IN SCOPE OF THE WORK, HOWEVER, THE CONTRACTOR WILL BE PAID FOR THE QUANTITY ACTUALLY FURNISHED BASED UPON THE UNIT PRICE BID FOR THE WORK.

THE CONTRACTOR SHALL CONTACT THE DISTRICT ONE TRAFFIC CONTROL SUPERVISOR AT (847)705-4470 FOR ARTERIALS AND (847)705-4151 FOR EXPRESSWAYS A MINIMUM OF 72 HOURS IN ADVANCE OF BEGINNING WORK.

THESE PLANS HAVE BEEN PREPARED FROM NOTES RECEIVED FROM THE BUREAU OF MAINTAINENCE BRIDGE INSPECTORS.

DO NOT SCALE PLANS FOR CONSTRUCTION DIMENSIONS.

THE "ARTERIAL ROAD INFORMATION SIGN (TC-22)" IS APPLICABLE ONLY TO ARTERIAL ROADS AND SHALL NOT BE APPLIED TO EXPRESSWAYS.

AT LOCATION 1: THE CONTRACTOR SHALL NOT BE ALLOWED TO CROSS ANY RAILROAD TRACKS. THE NORTH SLOPEWALL SHALL BE DONE FROM THE ABOVE.

AT LOCATION 2: THE CONTRACTOR SHALL SALVAGE AND RETURN THE EXISTING DRAIN PIPES TO:

DISTRICT BRIDGE OFFICE  
1101 BIESTERFIELD RD

ELK GROVE VILLAGE, IL 60007.

CONTACT: SHAKER ASFOUR @ (847) 965-1501

THIS WORK SHALL INCLUDE REMOVING, TRANSPORTING AND UNLOADING THE EXISTING DRAIN PIPES TO THE ABOVE YARD. COST INCLUDED IN THE SLOPEWALL REPAIR.

SLOPEWALL SHALL BE REINFORCED WITH WELDED WIRE FABRIC 6 in x 6 in W4.0 X W4.0 WEIGHING 58 LBS PER 100 SQ.FT. COST OF THE MESH IS INCLUDED IN THE COST OF SLOPEWALL.

ILLINOIS DEPARTMENT OF  
TRANSPORTATION

GENERAL NOTES

ROUTE	SECTION	COUNTY	TOTAL SHEETS	SHEET NUMBER
VARIOUS	2009-074 I	COOK	12	4

CONTRACT 60H85

**SUMMARY OF QUANTITIES**

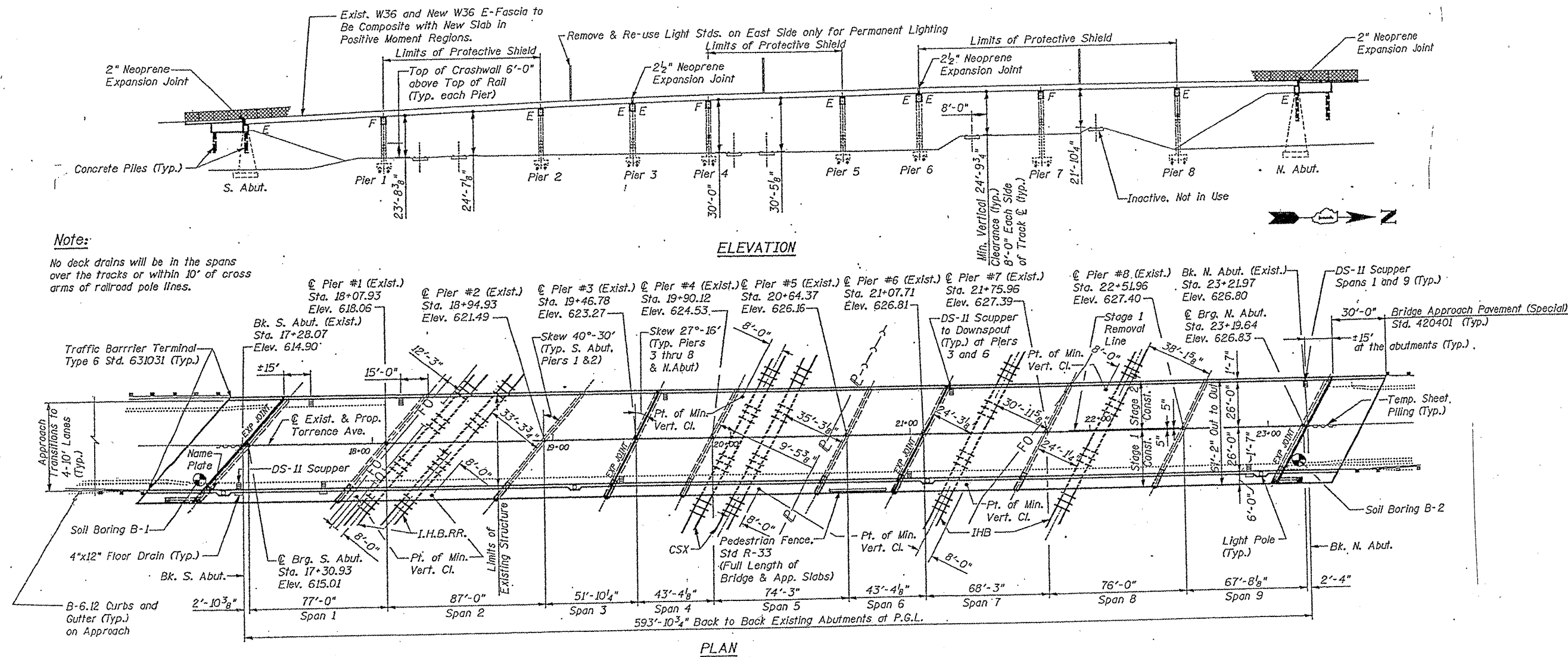
**CONSTRUCTION TYPE CODE**  
**SFTY-2A**

CODE NO	ITEM	UNIT	<i>URBAN</i> 100% STATE		
			TOTAL QUANTITIES	LOCATION 1 SN 016 - 0935	LOCATION 2 SN 016 - 0943
20200100	EARTH EXCAVATION	CU YD	6		6
20700220	POROUS GRANULAR EMBANKMENT	CU YD	3		3
21400100	GRADING AND SHAPING DITCHES	FOOT	20		20
28000305	TEMPORARY DITCH CHECKS	FOOT	90	40	50
28100105	STONE RIPRAP, CLASS A3	SQ YD	120	120	
28100705	STONE DUMPED RIPRAP, CLASS A3	SQ YD	20		20
28200200	FILTER FABRIC	SQ YD	185	185	
50104650	SLOPE WALL REMOVAL	SQ YD	46		46
51100100	SLOPE WALL 4 INCH	SQ YD	240		240
67100100	MOBILIZATION	L SUM	1	0.5	0.5
70102625	TRAFFIC CONTROL AND PROTECTION, STANDARD 701606	L SUM	1	1	
70102630	TRAFFIC CONTROL AND PROTECTION, STANDARD 701601	L SUM	1		1
70102640	TRAFFIC CONTROL AND PROTECTION, STANDARD 701801	L SUM	1	0.5	0.5
X0322467	TEMPORARY INFORMATION SIGNING FOR LANE CLOSURE	SQ FT	102.80	51.4	51.4
X0323077	SILICONE JOINT SEALER, 2 3/4"	FOOT	203		203
X0325702	NIGHTTIME WORK ZONE LIGHTING	L SUM	1		1
X7011015	TRAFFIC CONTROL AND PROTECTION (EXPRESSWAYS)	L SUM	1		1
Z0048665	RAILROAD PROTECTIVE LIABILITY INSURANCE	L SUM	1	1	

ILLINOIS DEPARTMENT OF  
TRANSPORTATION  
  
SUMMARY OF QUANTITIES

ROUTE	SECTION	COUNTY	TOTAL SHEETS	SHEET NUMBER
VARIOUS	2009-0741	COOK	12	5

CONTRACT NO 60H85



SHEET 1 OF 2

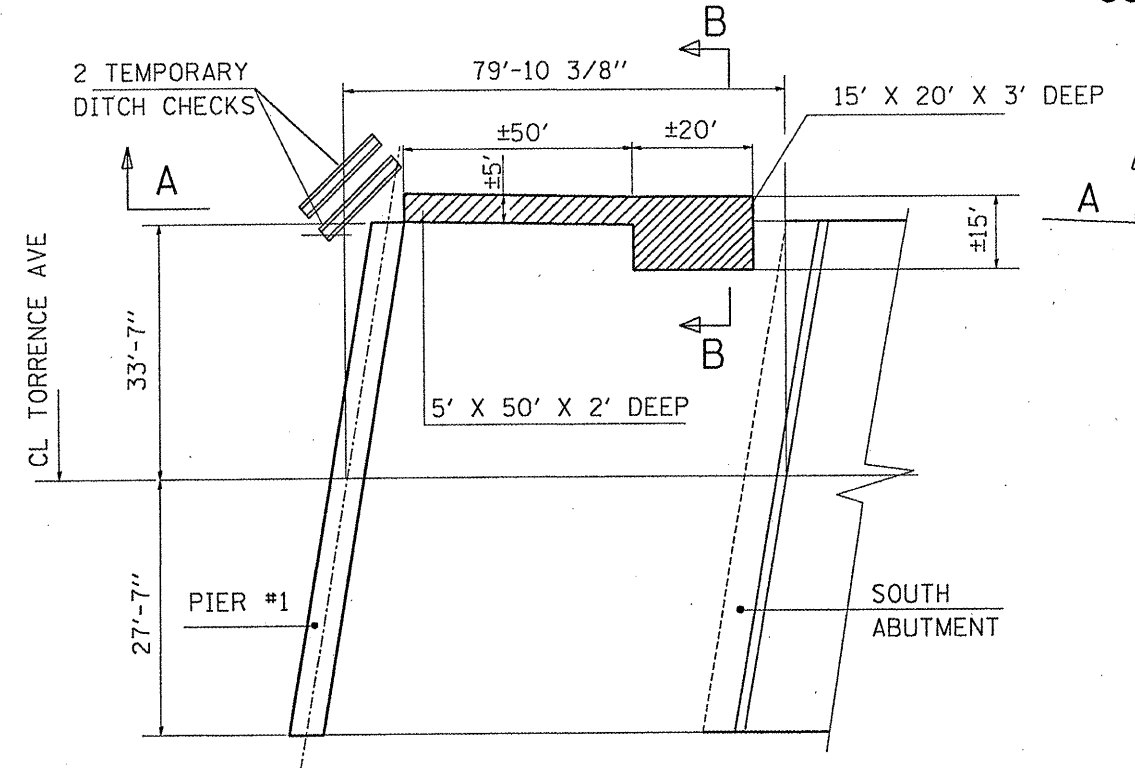
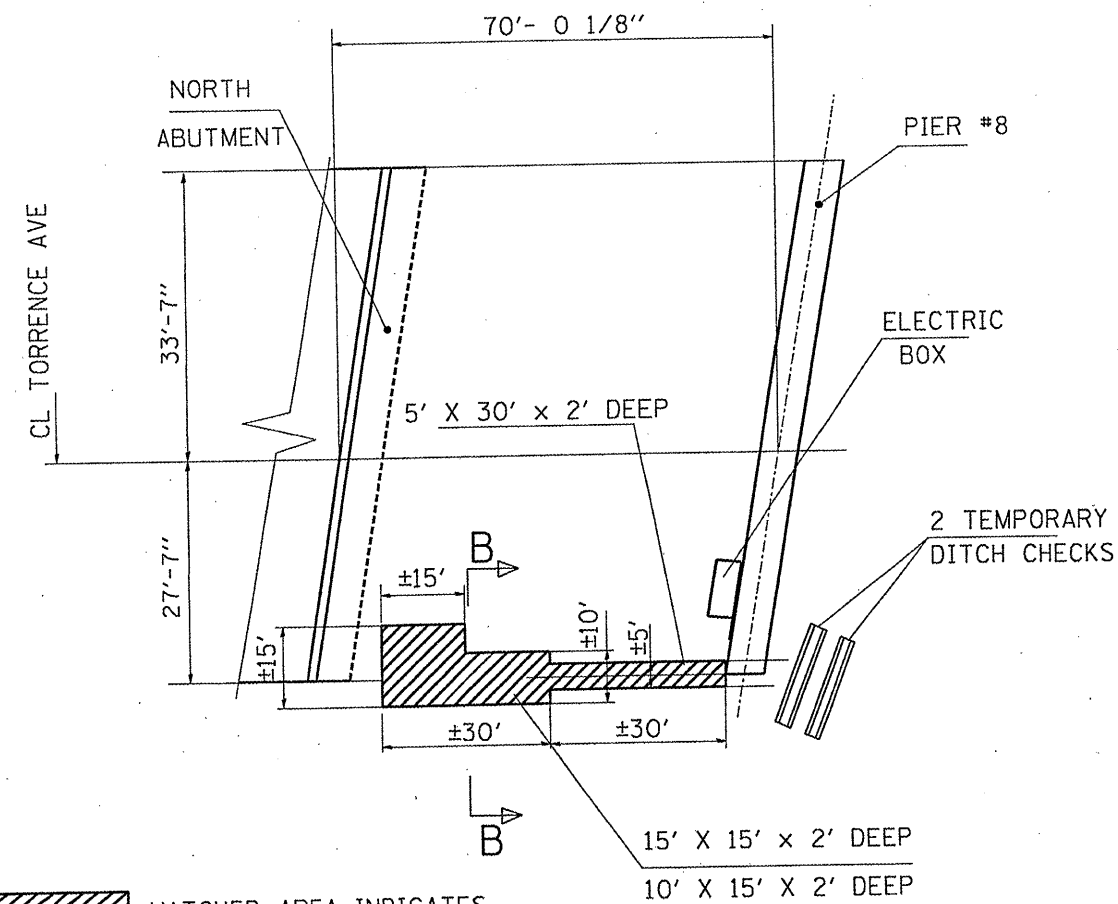
**FOR INFORMATION ONLY**

ILLINOIS DEPARTMENT OF  
TRANSPORTATION

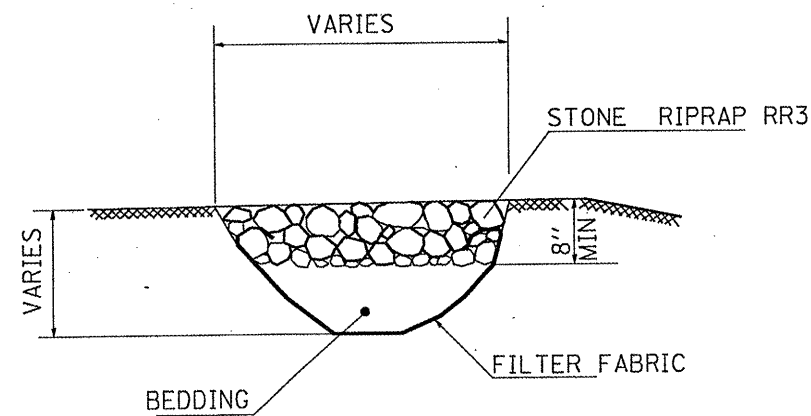
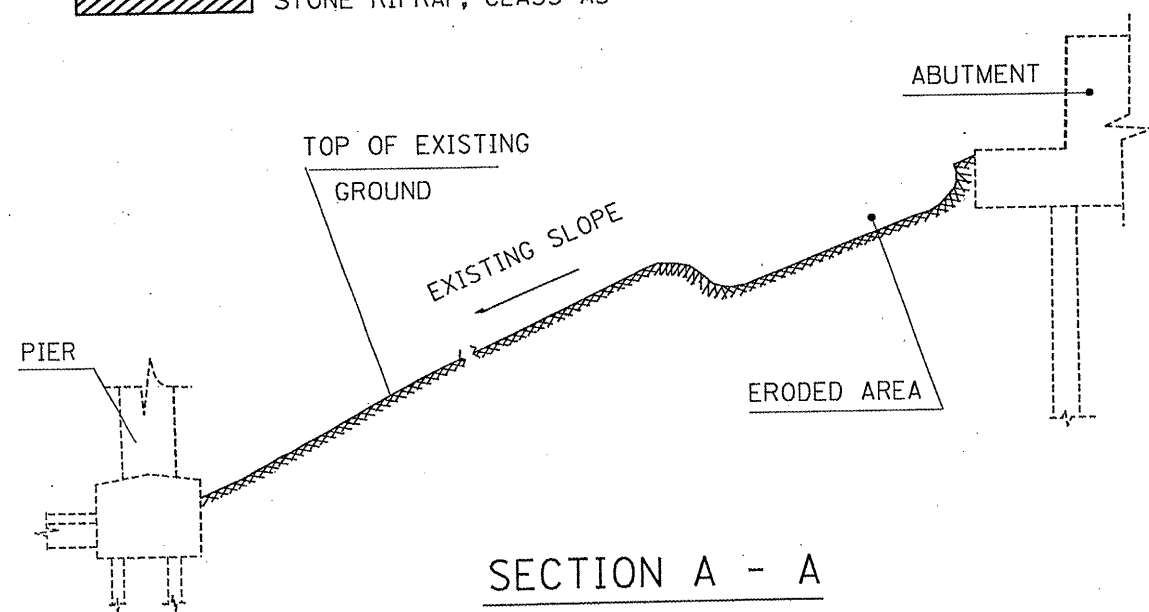
LOCATION 1: SN 016 - 0935  
TORRENCE AVE OVER CSXT & IHB RR'S  
BRIDGE PLAN

ROUTE	SECTION	COUNTY	TOTAL SHEETS	SHEET NUMBER
IL 58 / I94	2009-074 I	COOK	12	6

CONTRACT 60H85



HATCHED AREA INDICATES  
STONE RIPRAP, CLASS A3



TWO EXISTING PVC PIPE FLOOR DRAIN EXTENSIONS  
SHALL REMAIN IN PLACE.

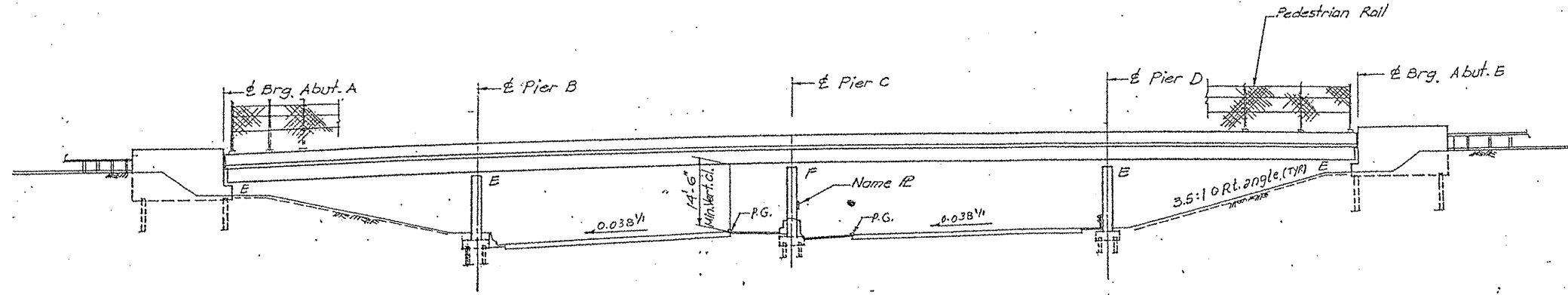
SHEET 2 OF 2

ILLINOIS DEPARTMENT OF  
TRANSPORTATION

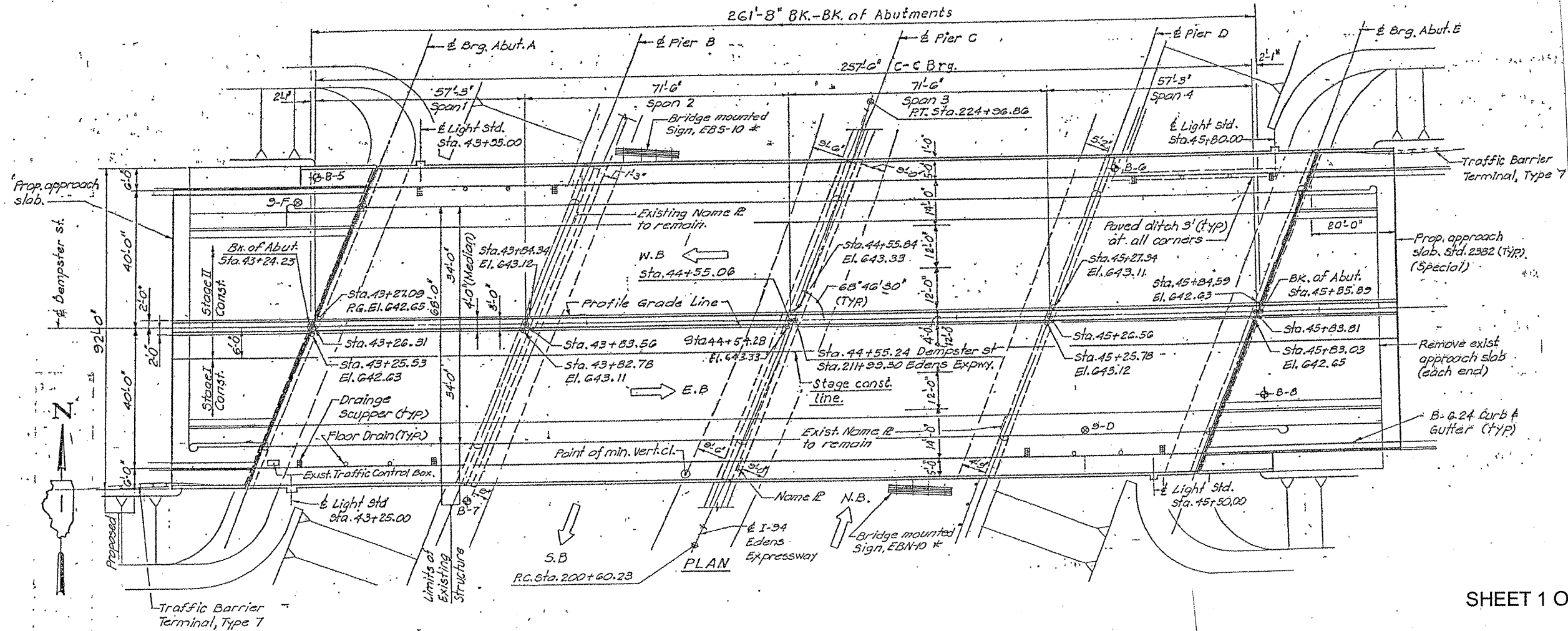
LOCATION 1: SN 016-0935  
TORRENCE AVE OVER CSXT & IHB RR's  
BRIDGE PLAN

ROUTE	SECTION	COUNTY	TOTAL SHEETS	SHEET NUMBER
VARIOUS	2009-074 I	COOK	12	7

CONTRACT NO 60H85



ELEVATION



PLAN

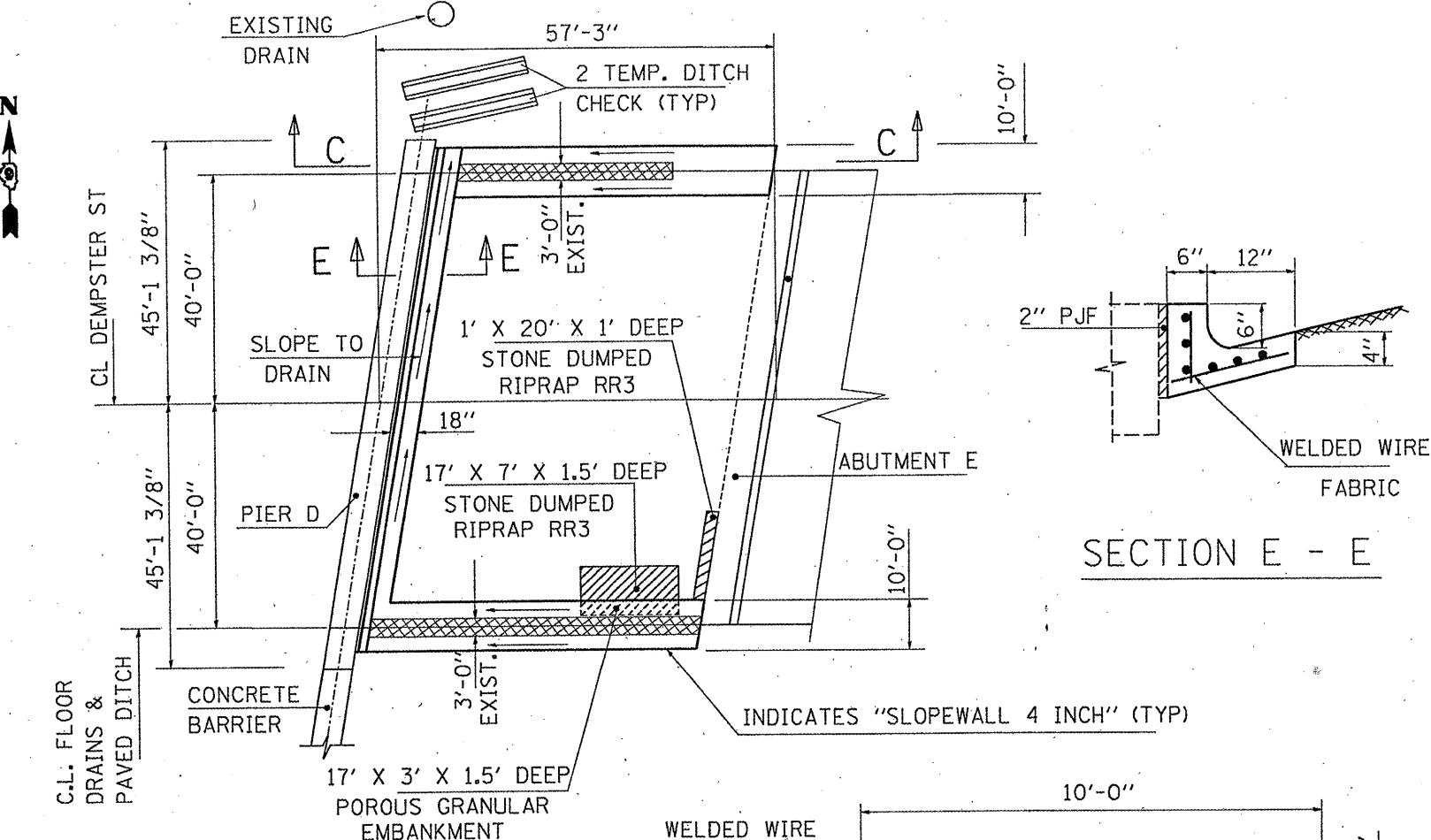
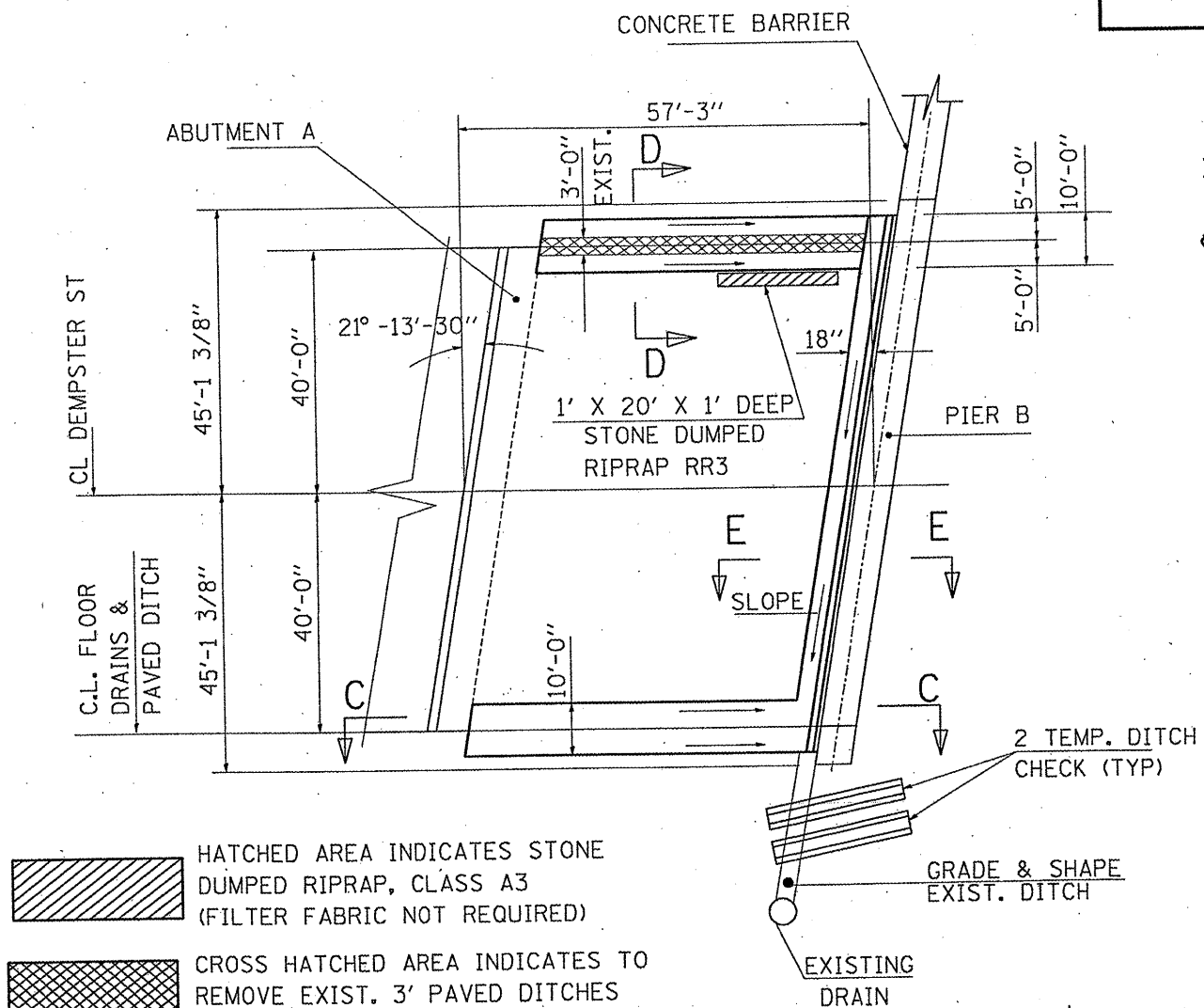
SHEET 1 OF 3

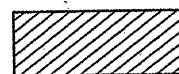
**FOR INFORMATION ONLY**


ILLINOIS DEPARTMENT OF  
TRANSPORTATION  
LOCATION 2: SN 016 - 0943  
IL 58 (DEMPSTER ST) OVER I- 94  
BRIDGE PLAN

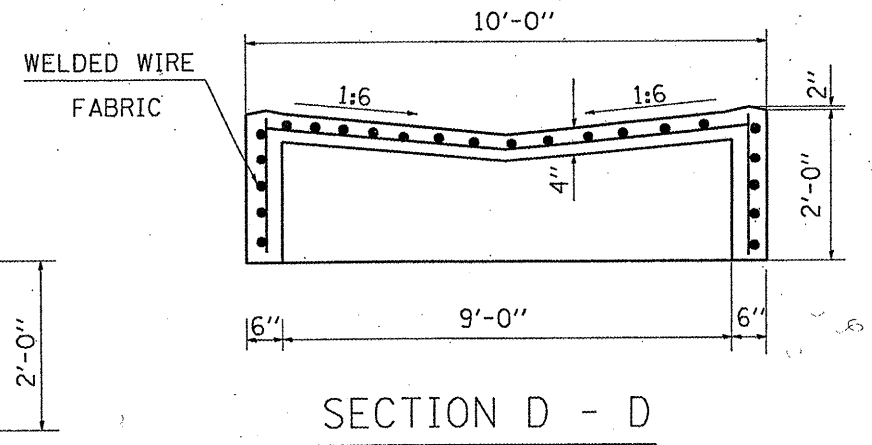
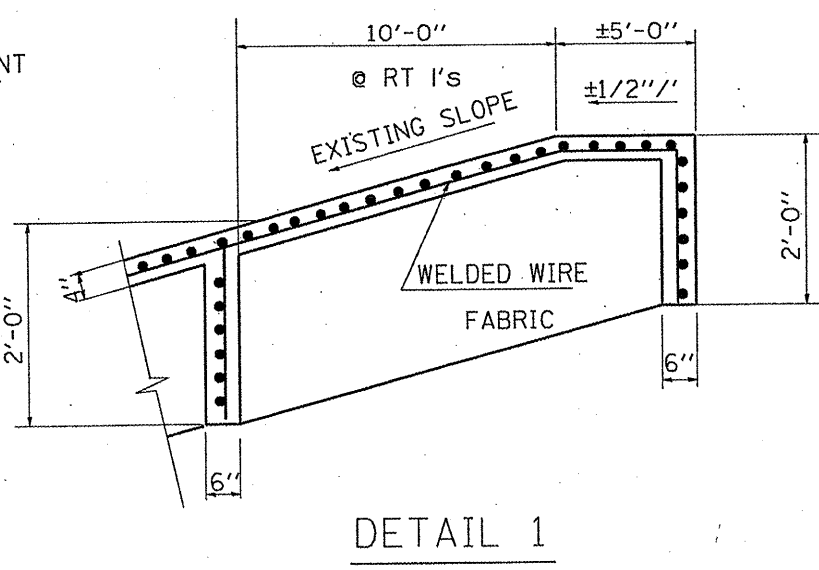
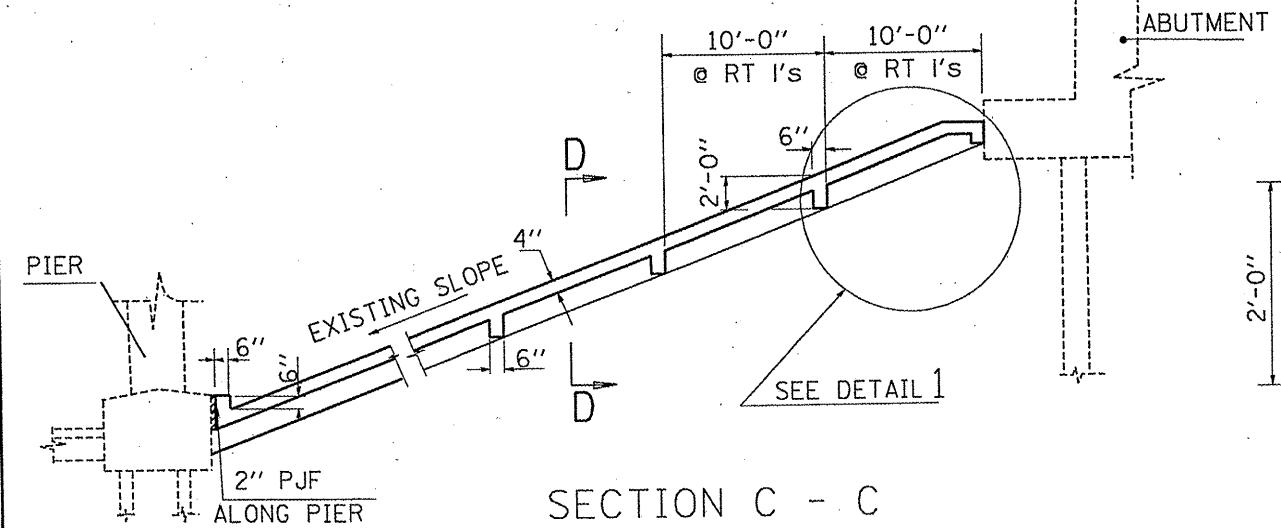
<b>ROUTE</b> VARIOUS	<b>SECTION</b> 2009-074 I	<b>COUNTY</b> COOK	<b>TOTAL SHEETS</b> 11	<b>SHEET NUMBER</b> 8
-------------------------	------------------------------	-----------------------	---------------------------	--------------------------

CONTRACT NO 60H85



 HATCHED AREA INDICATES STONE DUMPED RIPRAP, CLASS A3 (FILTER FABRIC NOT REQUIRED)

 CROSS HATCHED AREA INDICATES TO REMOVE EXIST. 3' PAVED DITCHES (COST INCL. IN SLOPEWALL REMOVAL)



THE EXIST. CORRUGATED PIPE ON NORTH SIDE & PVC PIPE ON SOUTH WEST SIDE OF THE BRIDGE SHALL BE REMOVED. THE CONTRACTOR SHALL CLEAN & POWER WASH ALL BRIDGE DECK SCUPPERS AND FLOOR DRAINS. COST INCLUDED IN SLOPEWALL 4".

SHEET 2 OF 3

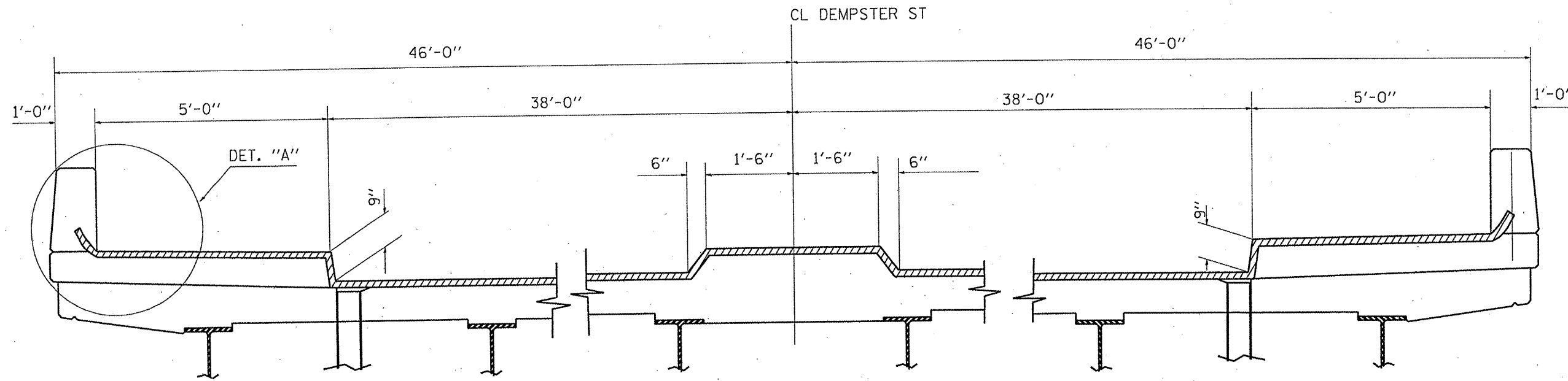
ILLINOIS DEPARTMENT OF TRANSPORTATION

LOCATION 2: SN 016 - 0943  
IL 58 (DEMPSTER ST) OVER I-94  
BRIDGE PLAN

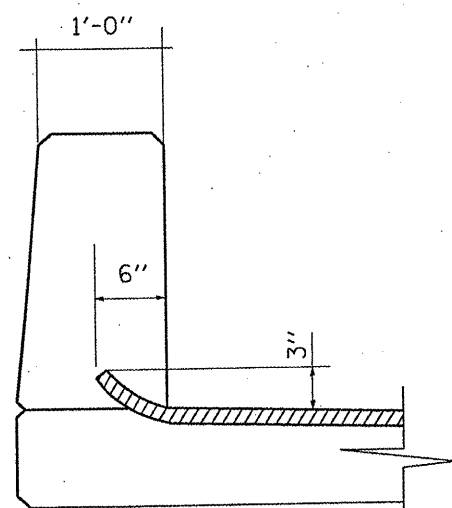


ROUTE	SECTION	COUNTY	TOTAL SHEETS	SHEET NUMBER
VARIOUS	2009-074 I	COOK	12	9

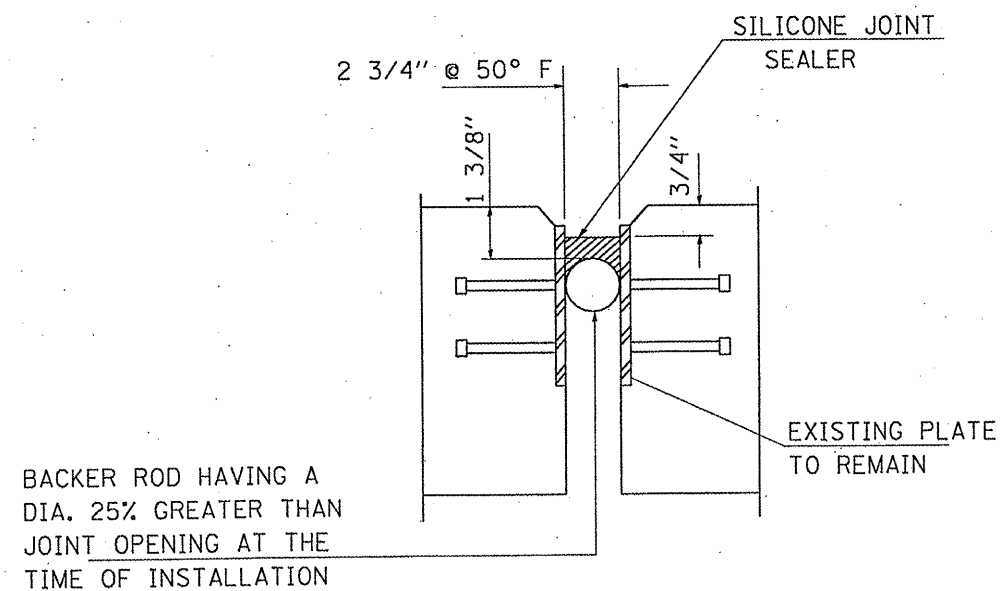
CONTRACT NO 60H85



END OF SEAL TREATMENT  
EXISTING CROSS SECTION



DETAIL "A"

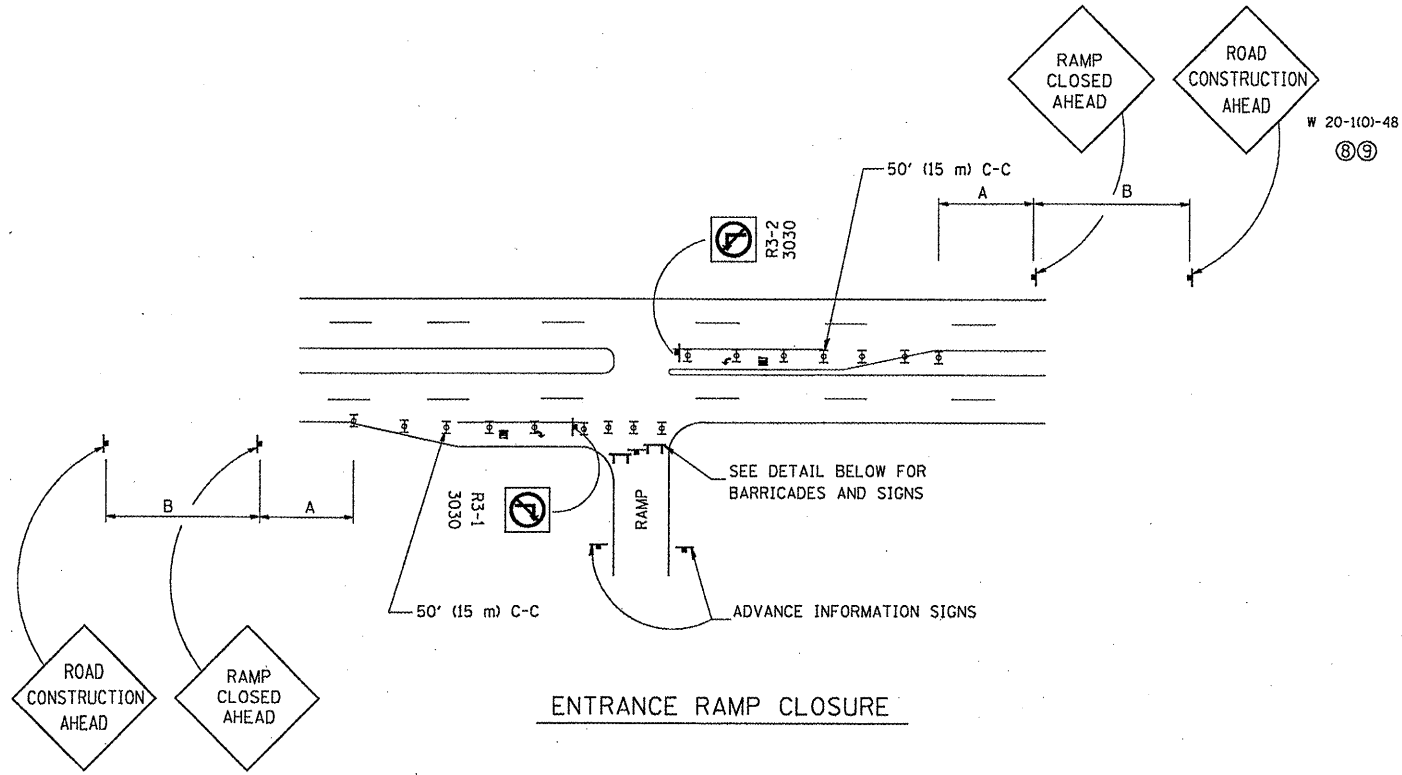


PROPOSED JOINT AT ABUTMENTS

THE REMOVAL OF THE EXISTING JOINT IS INCLUDED IN THE COST OF SILICONE JOINT SEALER.

SHEET 3 OF 3

ILLINOIS DEPARTMENT OF  
TRANSPORTATION  
  
LOCATION 2: SN 016 - 0943  
IL 58 (DEMPSTER ST) OVER I- 94  
BRIDGE PLAN



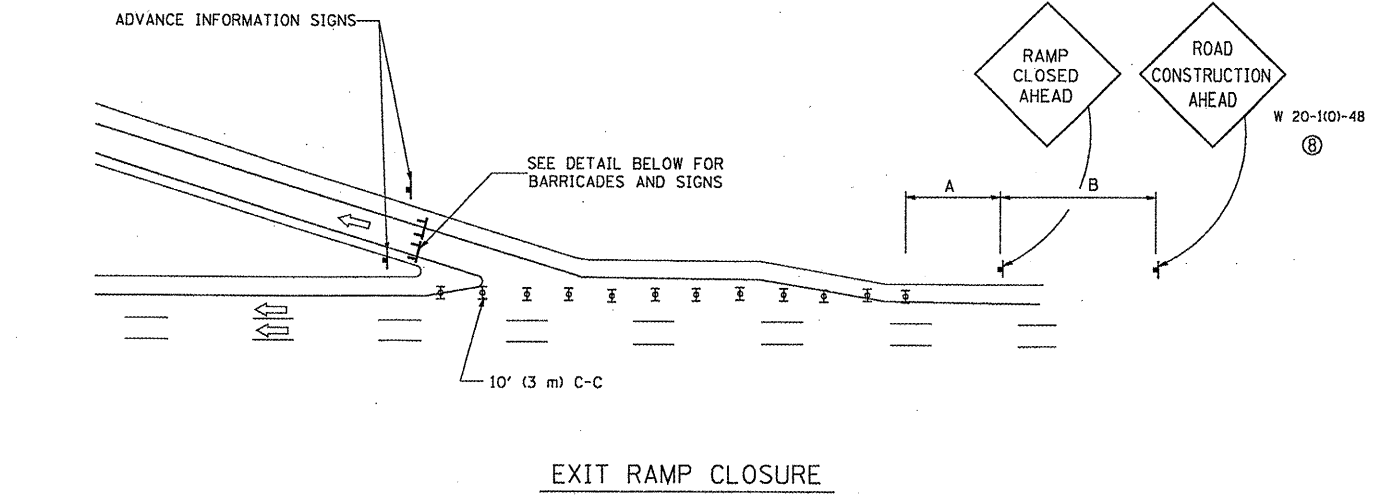
**ENTRANCE RAMP CLOSURE**

**SIGN SPACING TABLE**

FACILITY	DISTANCE BETWEEN SIGNS	
	A	B
EXPRESSWAY >24 HOURS	1000' (300 m)	1500' (450 m)
EXPRESSWAY ≤24 HOURS	500' (150 m)	500' (150 m)
ARTERIAL ≥45 MPH	350' (100 m)	350' (100 m)
ARTERIAL <45 MPH	150' (45 m)	150' (45 m)

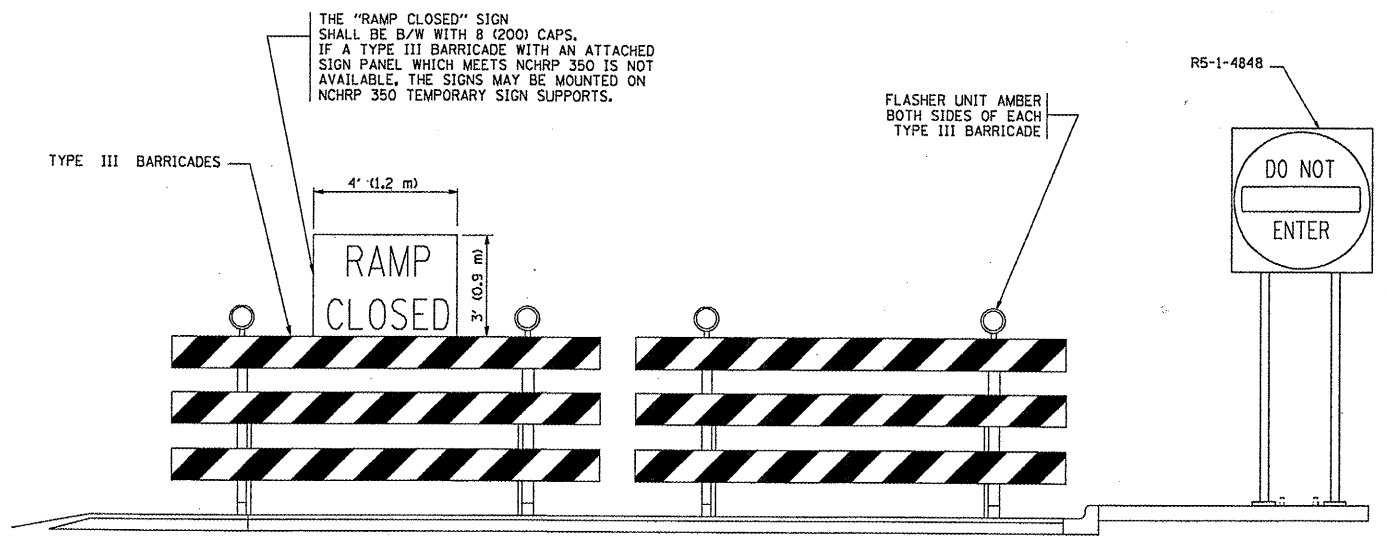
DISTANCES MAY BE SHORTENED DEPENDING UPON THE PROXIMITY OF ADJACENT RAMPS OR INTERSECTIONS.

W 20-101-48  
⑧⑨

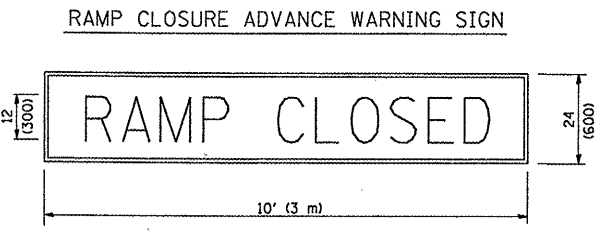


**EXIT RAMP CLOSURE**

- SYMBOLS**
- ▬ TYPE II BARRICADE, DRUM OR VERTICAL BARRICADE WITH STEADY BURN MONO-DIRECTIONAL LIGHT
  - ▬ TYPE III BARRICADE WITH FLASHING LIGHT

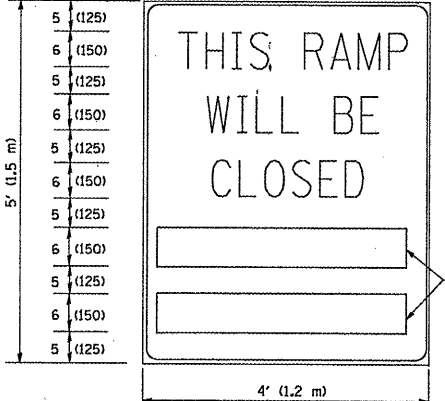


**DETAIL FOR REQUIRED BARRICADES & SIGNS**



BLACK LEGEND ON ORANGE REFLECTORIZED BACKGROUND  
1 (25) BORDER  
THESE SIGNS ARE REQUIRED ON ALL THE EXIT GUIDE SIGNS FOR THE CLOSED EXIT RAMPS.

**RAMP CLOSURE ADVANCE INFORMATION SIGN**



BLACK LEGEND ON WHITE REFLECTORIZED BACKGROUND  
1/2 (12) BORDER  
THESE BLANK AREAS SHALL BE FILLED WITH THE DATES AND THE TIME THAT THE RAMP WILL BE CLOSED.

THESE SIGNS ARE REQUIRED ON BOTH SIDES OF THE RAMP, MINIMUM OF 1 WEEK IN ADVANCE OF THE CLOSURE.

**GENERAL NOTES:**

- ① CONES MAY BE SUBSTITUTED FOR DRUMS OR TYPE II BARRICADES DURING DAY OPERATIONS. CONES SHALL BE A MINIMUM OF 28 (700) HIGH.
- ② STEADY BURN LIGHTS WILL NOT BE REQUIRED FOR DAY OPERATIONS.
- ③ A FLAGGER SHALL BE POSITIONED AT EACH CLOSED RAMP THAT IS OPEN TO CONSTRUCTION VEHICLES.
- ④ ALL ROUTE MARKERS AND TRAILBLAZER ASSEMBLIES WHICH DIRECT MOTORISTS TO A CLOSED ENTRANCE RAMP SHALL BE COVERED.
- ⑤ THE SIGNING AND BARRICADING WHICH IS REQUIRED BY THIS DETAIL SHALL BE INCLUDED IN THE COST OF TRAFFIC CONTROL AND PROTECTION (EXPRESSWAYS).
- ⑥ AUTHORIZATION FROM THE DISTRICT'S BUREAU OF TRAFFIC IS REQUIRED FOR ALL RAMP CLOSURES.
- ⑦ THE RAMP CLOSURE ADVANCE INFORMATION SIGNS SHALL BE ERECTED IF THE CLOSURE TIME EXCEEDS TWENTY-FOUR (24) HOURS. ADDITIONAL ADVANCE WARNING SIGNS ON EXIT GUIDE SIGNING WILL BE REQUIRED FOR EXIT RAMP CLOSURES THAT EXCEED TWENTY-FOUR (24) HOURS IN LENGTH.
- ⑧ ROAD CONSTRUCTION AHEAD SIGNS MAY BE OMITTED WHEN THIS DETAIL IS USED IN CONJUNCTION WITH OTHER TRAFFIC CONTROL THAT ALREADY INCLUDES A ROAD CONSTRUCTION AHEAD SIGN.
- ⑨ ARTERIAL ROAD CONSTRUCTION AHEAD SIGNS MAY BE OMITTED ON CLOSURES LESS THAN 24 HOURS IN DURATION.

ALL DIMENSIONS ARE IN INCHES (MILLIMETERS) UNLESS OTHERWISE SHOWN.

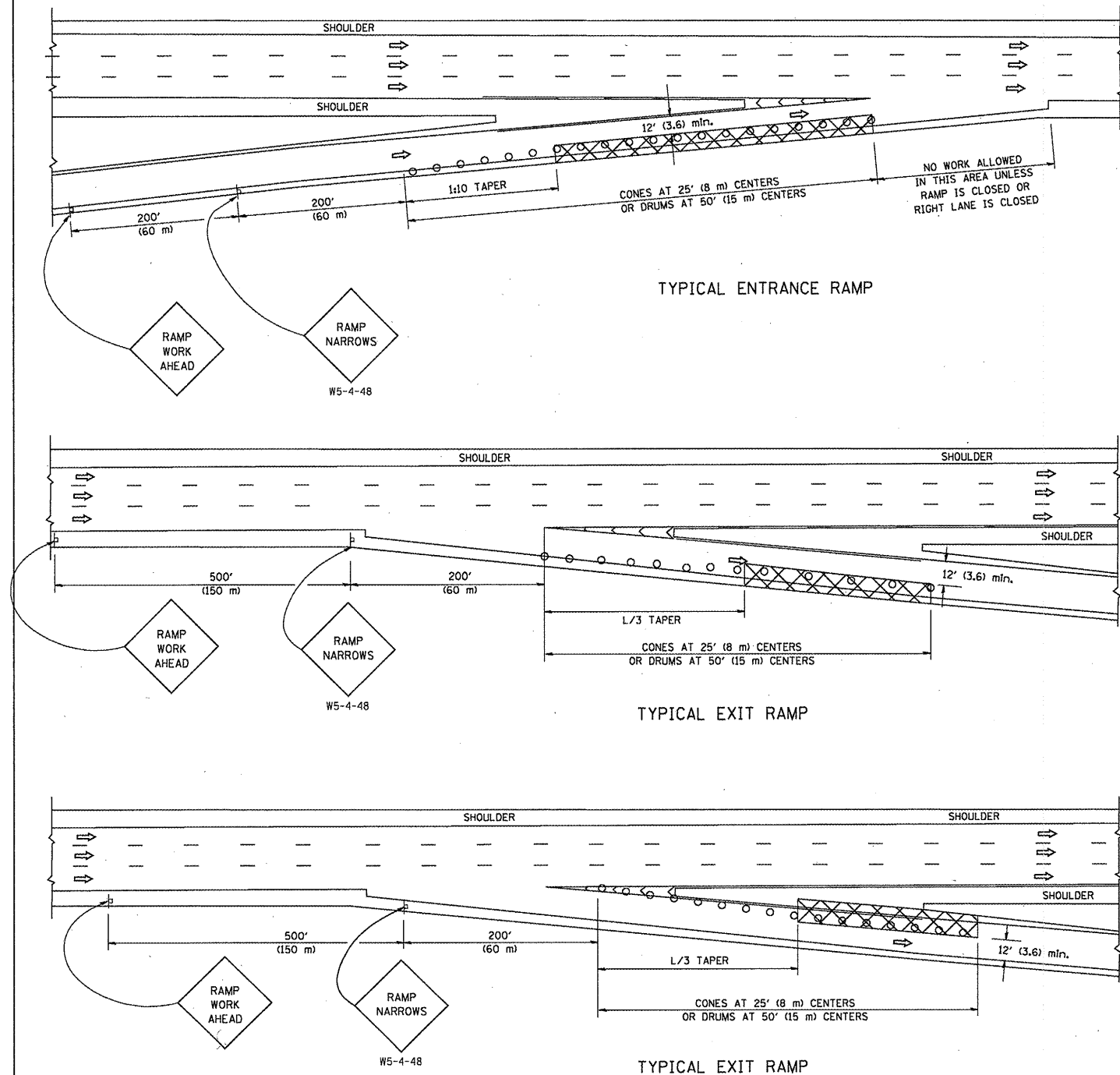
FILE NAME = W:\distsd\22x34\td08.dgn	USER NAME = leyno	DESIGNED - DWS	REVISED - DWS/JAF 12-02
		DRAWN -	REVISED - JAF 02-06
		CHECKED -	REVISED - SPB 01-07
		DATE - 02-83	REVISED - SPB 12-09

**STATE OF ILLINOIS  
DEPARTMENT OF TRANSPORTATION**

<b>FREWAY ENTRANCE AND EXIST RAMP CLOSURE DETAILS</b>	
SCALE: NONE	SHEET NO. 1 OF 1 SHEETS
STA.	TO STA.

F.A. RTE.	SECTION	COUNTY	TOTAL SHEETS	SHEET NO.
Vgn 2009-0741	TC-08	COOK	12	10
FED. ROAD DIST. NO. 1 ILLINOIS FED. AID PROJECT			CONTRACT NO. 60485	

PARTIAL RAMP CLOSURE DETAILS



TYPICAL ENTRANCE RAMP

TYPICAL EXIT RAMP

TYPICAL EXIT RAMP

SYMBOLS

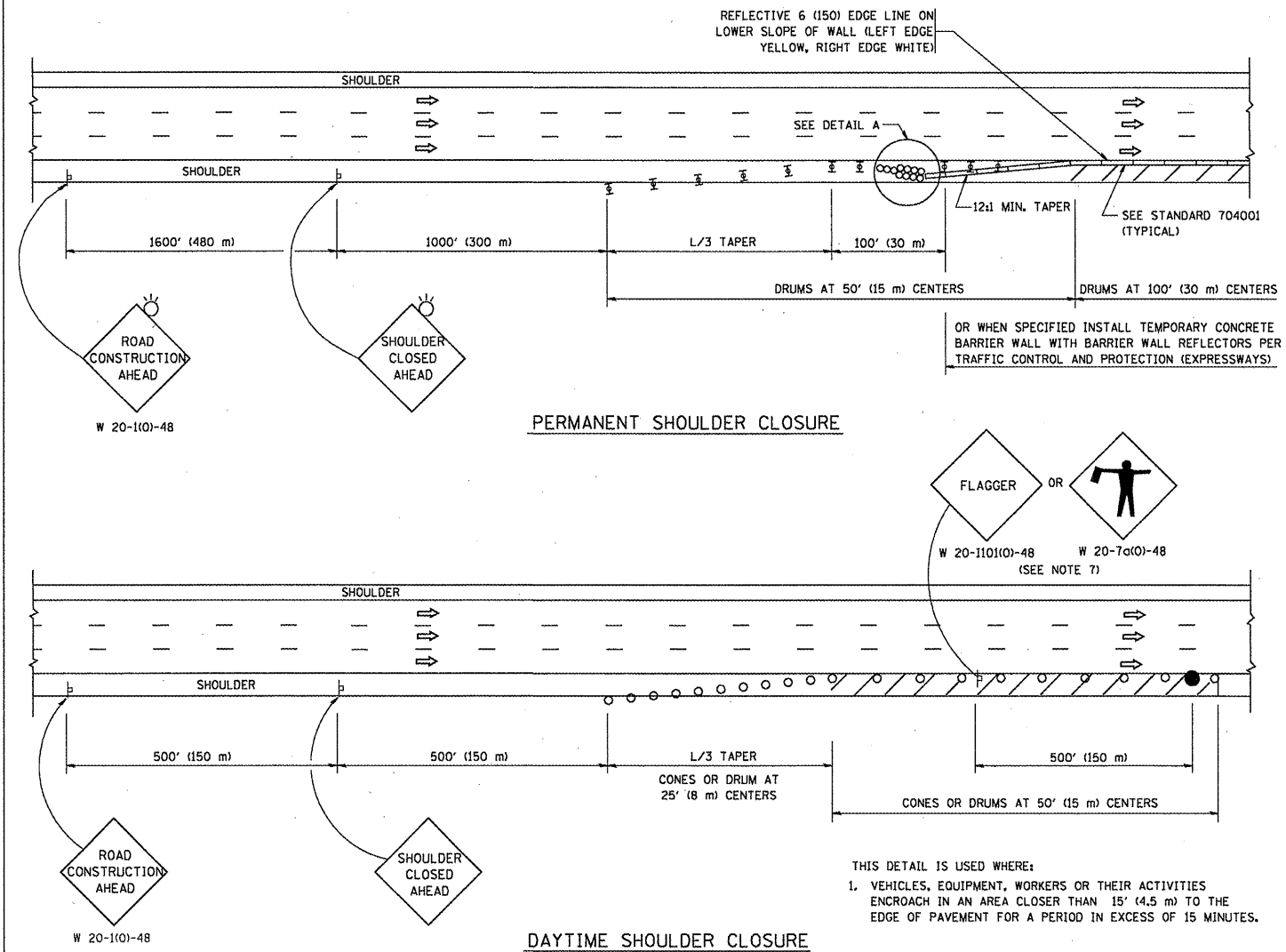
- ACTIVE WORK AREA
- SIGN ON PORTABLE OR PERMANENT SUPPORT
- FLAGGER WITH CONTROL SIGN
- TYPE II BARRICADE, DRUM OR VERTICAL BARRICADE WITH STEADY BURN MONO-DIRECTIONAL LIGHT
- CONE, DRUM OR BARRICADE

GENERAL NOTES

1. THE "L" DISTANCE EQUALS:  

SPEED LIMIT	FORMULAS
45 mph (80 km/h)	METRIC ENGLISH
OR GREATER:	$L = 0.65(W)(S)$ $L = (W)(S)$
	W = WIDTH OF OFFSET IN FEET (METERS)
	S = NORMAL POSTED SPEED MPH (KM/H)
2. PLASTIC DRUMS WITH HIGH PERFORMANCE REFLECTIVE SHEETING AND STEADY BURNING LIGHTS ARE REQUIRED FOR ALL NIGHTIME CLOSURES.
3. ALL SIGNS SHALL BE POST MOUNTED IF THE CLOSURE TIME EXCEEDS FOUR DAYS.
4. FLASHING LIGHTS SHALL BE USED DURING THE HOURS OF DARKNESS AND SHALL BE INSTALLED ABOVE THE FIRST TWO SETS OF SIGNS.

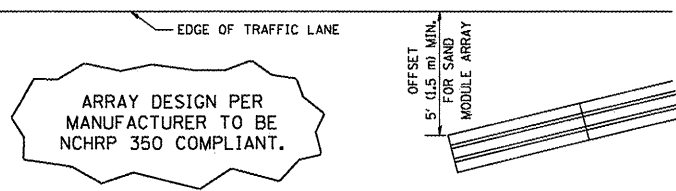
SHOULDER CLOSURE DETAILS



PERMANENT SHOULDER CLOSURE

DAYTIME SHOULDER CLOSURE

THIS DETAIL IS USED WHERE:  
 1. VEHICLES, EQUIPMENT, WORKERS OR THEIR ACTIVITIES ENCR OACH IN AN AREA CLOSER THAN 15' (4.5 m) TO THE EDGE OF PAVEMENT FOR A PERIOD IN EXCESS OF 15 MINUTES.



DETAIL "A"  
 IMPACT ATTENUATOR, TEMPORARY  
 (SEE NOTE 5)

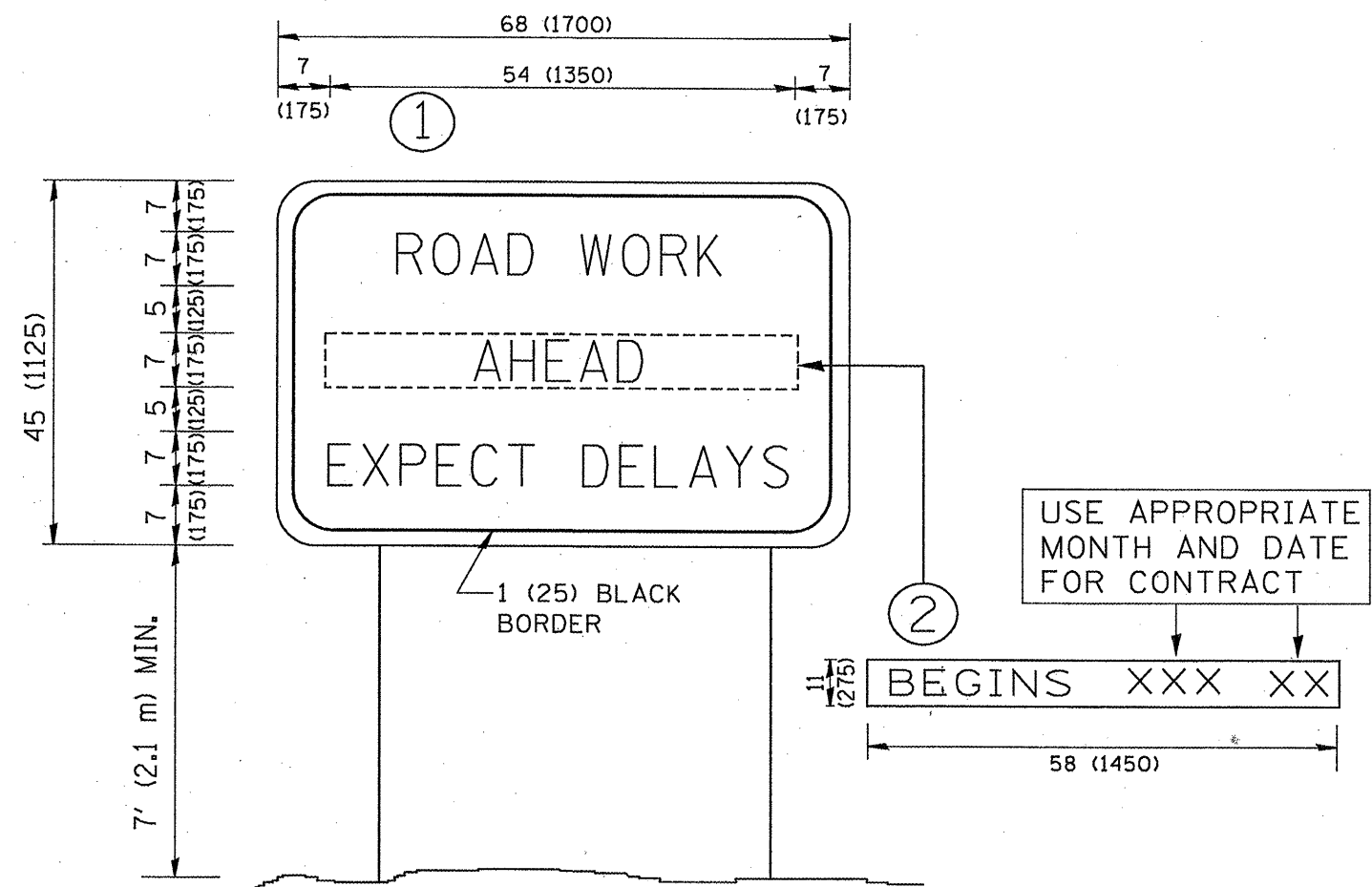
ALL DIMENSIONS ARE IN INCHES (MILLIMETERS) UNLESS OTHERWISE SHOWN.

FILE NAME = W:\vstestd\22x34\tcl7.dgn	USER NAME = luyso	DESIGNED -	REVISED - 04-03
		DRAWN - D.W.S.	REVISED - J.A.F. 12-06
		CHECKED -	REVISED - S.P.B. 01-07
		DATE - 11-96	REVISED - S.P.B. 12-09

STATE OF ILLINOIS  
 DEPARTMENT OF TRANSPORTATION

TRAFFIC CONTROL DETAILS FOR FREEWAY SHOULDER CLOSURES AND PARTIAL RAMP CLOSURES			
SCALE: NONE	SHEET NO. 1 OF 1 SHEETS	STA.	TO STA.

F.A. RTE.	SECTION	COUNTY	TOTAL SHEETS	SHEET NO.
var 2009-0741	TC-17	Cook	12	11
FED. ROAD DIST. NO. 1 ILLINOIS FED. AID PROJECT			CONTRACT NO. 60489	



**NOTES:**

1. USE BLACK LETTERING ON ORANGE BACKGROUND.
2. ERECT SIGNS IN ADVANCE OF THE LOCATION FOR THE "ROAD CONSTRUCTION AHEAD" SIGN AT LOCATIONS AS DIRECTED BY THE ENGINEER.
3. ERECT SIGN ① WITH INSTALLED PANEL ② ONE WEEK PRIOR TO THE START OF CONSTRUCTION.
4. REMOVE PANEL ② SOON AFTER THE START OF CONSTRUCTION.
5. SEE SPECIAL PROVISION FOR "TEMPORARY INFORMATION SIGNING" FOR ADDITIONAL INFORMATION.
6. ONE SIGN ASSEMBLY EQUALS 25.70 SQ. FT. (2.3 SQ. M.)
7. SHALL BE PAID FOR AS TEMPORARY INFORMATION SIGNING.

ALL DIMENSIONS ARE IN INCHES (MILLIMETERS) UNLESS OTHERWISE SHOWN.

FILE NAME = W:\distsd\22x34\to22.dgn	USER NAME = gegltenobt	DESIGNED -	REVISED - R. MIRS 09-15-97
		DRAWN -	REVISED - R. MIRS 12-11-97
	PLOT SCALE = 50.000' / IN.	CHECKED -	REVISED - T. RAMMACHER 02-02-99
	PLOT DATE = 1/4/2008	DATE -	REVISED - C. JUCIUS 01-31-07

STATE OF ILLINOIS  
DEPARTMENT OF TRANSPORTATION

ARTERIAL ROAD  
INFORMATION SIGN

SCALE: NONE SHEET NO. 1 OF 1 SHEETS STA. TO STA.

F.A. RTE.	SECTION	COUNTY	TOTAL SHEETS	SHEET NO.
Var 2004-0741	TC-22	COOK	19	19
FED. ROAD DIST. NO. 1 ILLINOIS FED. AID PROJECT			CONTRACT NO. 60H89	