

F.A.P. RTE.	SECTION	COUNTY	TOTAL SHEETS	SHEET NO.
349	11-RS-5	KANE	14	1
		ILLINOIS	CONTRACT NO. 60159	

STATE OF ILLINOIS  
DEPARTMENT OF TRANSPORTATION  
DIVISION OF HIGHWAYS

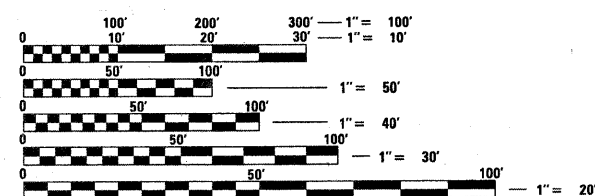
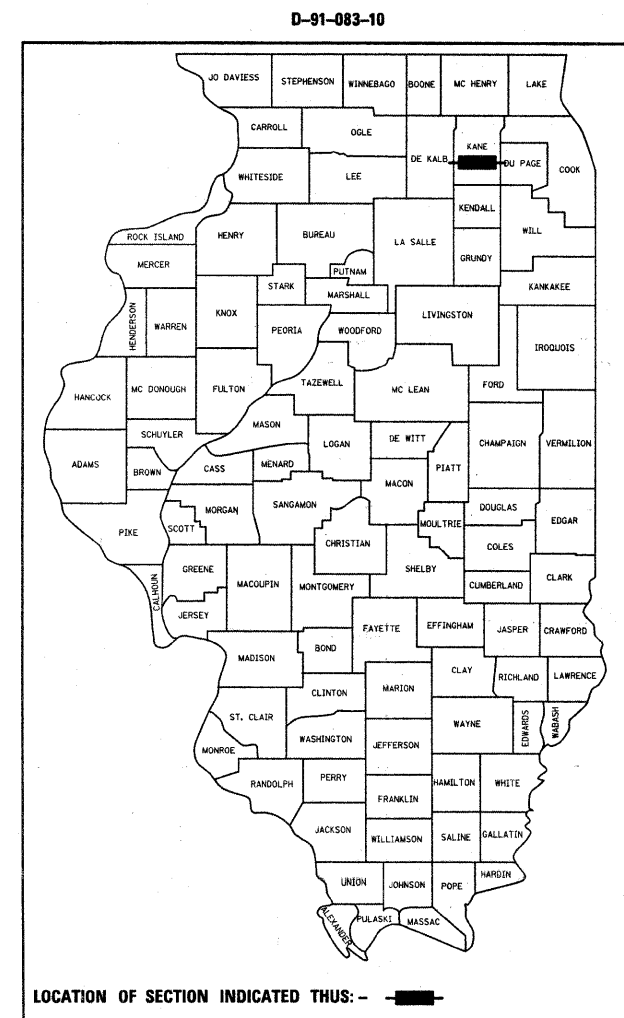
**PROPOSED  
HIGHWAY PLANS**

F.A.P. 349: U.S. RTE. 30  
KENDALL CO. LINE TO 0.3 MILE W. OF ALBRIGHT RD.  
SECTION: 11-RS-5

RESURFACING (3P)  
KANE COUNTY  
C-91-083-10

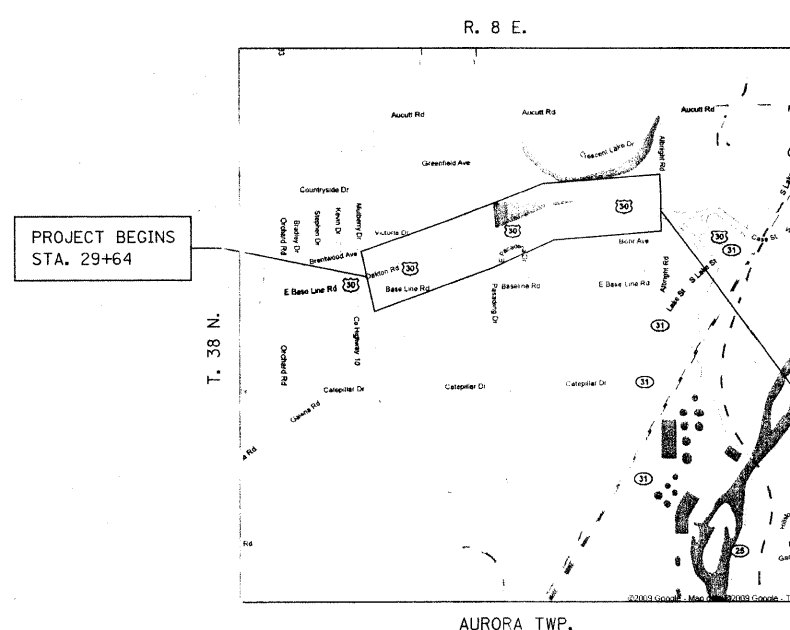
FOR INDEX OF SHEETS, SEE SHEET NO. 2

THE PROJECT IS LOCATED IN THE  
VILLAGE OF MONTGOMERY



FULL SIZE PLANS HAVE BEEN PREPARED USING STANDARD ENGINEERING SCALES. REDUCED SIZED PLANS WILL NOT CONFORM TO STANDARD SCALES. IN MAKING MEASUREMENTS ON REDUCED PLANS, THE ABOVE SCALES MAY BE USED.

J.U.L.I.E.  
JOINT UTILITY LOCATION INFORMATION FOR EXCAVATION  
1-800-892-0123  
OR 811



AVERAGE DAILY TRAFFIC  
U.S. 30 2007 ADT = 23,000  
POSTED SPEED LIMIT  
45, 50 MPH

PROJECT ENDS  
STA. 59+51

GROSS LENGTH & NET LENGTH 2,987 FT. = 0.56 MILE

PROJECT ENGINEER: DANIEL WILGREEN (847) 705-4240  
PROJECT MANAGER: KEN ENG

CONTRACT NO. 60159

STATE OF ILLINOIS  
DEPARTMENT OF TRANSPORTATION  
DIVISION OF HIGHWAYS

SUBMITTED JANUARY 11, 2009

*Diana M. O'Keefe*  
DEPUTY DIRECTOR OF HIGHWAYS, REGION ENGINEER

March 19, 2010

*Scott E. Slitt, P.E.*  
ACTING ENGINEER OF DESIGN AND ENVIRONMENT

March 19, 2010

*Christine M. Reed*  
DIRECTOR OF HIGHWAYS, CHIEF ENGINEER

PRINTED BY THE AUTHORITY  
OF THE STATE OF ILLINOIS