

F.A.P. RTE.	SECTION	COUNTY	TOTAL SHEETS	SHEET NO.
349	11-RS-5	KANE	14	1
		ILLINOIS	CONTRACT NO. 60159	

STATE OF ILLINOIS  
DEPARTMENT OF TRANSPORTATION  
DIVISION OF HIGHWAYS

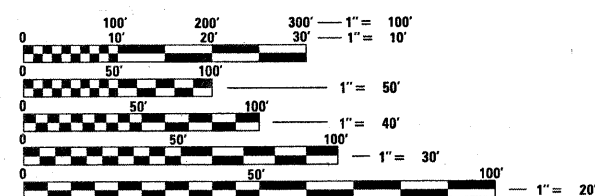
# PROPOSED HIGHWAY PLANS

F.A.P. 349: U.S. RTE. 30  
KENDALL CO. LINE TO 0.3 MILE W. OF ALBRIGHT RD.  
SECTION: 11-RS-5

RESURFACING (3P)  
KANE COUNTY  
C-91-083-10

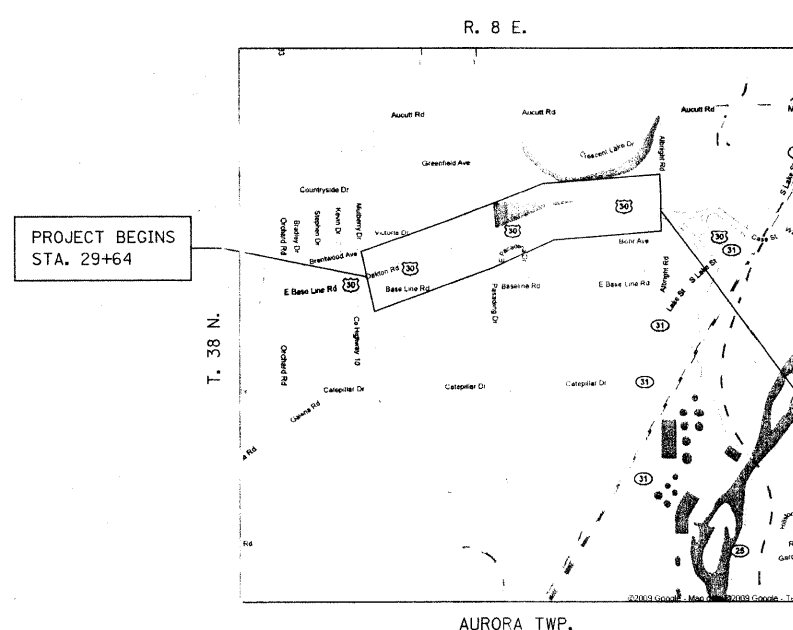
FOR INDEX OF SHEETS, SEE SHEET NO. 2

THE PROJECT IS LOCATED IN THE  
VILLAGE OF MONTGOMERY



FULL SIZE PLANS HAVE BEEN PREPARED USING STANDARD ENGINEERING SCALES. REDUCED SIZED PLANS WILL NOT CONFORM TO STANDARD SCALES. IN MAKING MEASUREMENTS ON REDUCED PLANS, THE ABOVE SCALES MAY BE USED.

J.U.L.I.E.  
JOINT UTILITY LOCATION INFORMATION FOR EXCAVATION  
1-800-892-0123  
OR 811



AVERAGE DAILY TRAFFIC  
U.S. 30 2007 ADT = 23,000  
POSTED SPEED LIMIT  
45, 50 MPH

PROJECT ENDS  
STA. 59+51

GROSS LENGTH & NET LENGTH 2,987 FT. = 0.56 MILE

PROJECT ENGINEER: DANIEL WILGREEN (847) 705-4240  
PROJECT MANAGER: KEN ENG

CONTRACT NO. 60159

STATE OF ILLINOIS  
DEPARTMENT OF TRANSPORTATION  
DIVISION OF HIGHWAYS

SUBMITTED JANUARY 11, 2009

*Diana M. O'Keefe*  
DEPUTY DIRECTOR OF HIGHWAYS, REGION ENGINEER

March 19, 2010

*Scott E. Slitt, P.E.*  
ACTING ENGINEER OF DESIGN AND ENVIRONMENT

March 19, 2010

*Christine M. Reed*  
DIRECTOR OF HIGHWAYS, CHIEF ENGINEER

PRINTED BY THE AUTHORITY  
OF THE STATE OF ILLINOIS

INDEX OF SHEETS

<u>SHEET NO.</u>	<u>DESCRIPTION</u>
1	COVER SHEET
2	INDEX OF SHEETS, STATE STANDARDS, AND GENERAL NOTES
3	SUMMARY OF QUANTITIES
4	TYPICAL SECTIONS
5-6	ROADWAY AND PAVEMENT MARKING PLANS
7	PAVEMENT PATCHING FOR HMA SURFACED PAVEMENT
8	CURB AND CURB AND GUTTER REMOVAL AND REPLACEMENT
9	BUTT JOINT AND HMA TAPER DETAILS
10	TRAFFIC CONTROL AND PROTECTION FOR SIDE ROADS, INTERSECTIONS, AND DRIVEWAYS
11	TYPICAL APPLICATION FOR RAISED REFLECTIVE PAVEMENT MARKERS
12	DISTRICT ONE TYPICAL PAVEMENT MARKINGS
13	PAVEMENT MARKING LETTERS AND SYMBOLS FOR TRAFFIC STAGING
14	ARTERIAL ROAD INFORMATION SIGN

STATE STANDARDS

000001-05	STANDARD SYMBOLS, ABBREVIATIONS AND PATTERNS
442201-03	CLASS C AND D PATCHES
606001-04	CONCRETE CURB TYPE B AND COMBINATION CONCRETE CURB AND GUTTER
701006-03	OFF ROAD OPERATIONS 2L, 2W, 18' TO PAVEMENT EDGE FOR SPEED $\geq$ 45 MPH
701201-03	LANE CLOSURE, 2L, 2W, DAY ONLY ON ROAD TO 24" OFF ROAD FOR SPEED $\geq$ 45 MPH
701901-01	TRAFFIC CONTROL DEVICES
701011-02	OFFROAD MOVING OPERATIONS 2L, 2W, DAY ONLY FOR SPEED > 45 MPH
701301-03	LANE CLOSURE 2L, 2W, SHORT TERM OPERATION
701306-02	LANE CLOSURE 2L, 2W, SLOW MOVING OPERATIONS DAY TIME ONLY FOR SPEED 45 MPH
701311-03	LANE CLOSURE 2L, 2W, MOVING OPERATION, DAY ONLY
701336-05	LANE CLOSURE 2L, 2W, WORK AREAS IN SERIES FOR SPEEDS $\geq$ 45 MPH

GENERAL NOTES

BEFORE STARTING ANY EXCAVATION, THE CONTRACTOR SHALL CALL "JULIE" AT 800-892-0123 FOR FIELD LOCATIONS OF BURIED ELECTRIC, TELEPHONE AND GAS FACILITIES. (48 HOURS NOTIFICATION REQUIRED).

10 FEET (3 METER) TRANSITIONS SHALL BE USED TO MATCH PROPOSED CURB AND GUTTER AND MEDIAN ITEMS OF WORK TO EXISTING CURB AND GUTTERS AND MEDIANS IN THE FIELD, UNLESS OTHERWISE SHOWN. THE TRANSITIONS SHALL BE PAID FOR AT THE CONTRACT UNIT PRICE FOR THE PROPOSED ITEMS OF WORK SPECIFIED.

THE CONTRACTOR SHALL COORDINATE CONSTRUCTION ACTIVITIES WITH UTILITY COMPANIES AND THE VILLAGE OF MONTGOMERY.

THE CONTRACTOR WILL NOT BE ALLOWED TO SET UP A YARD OR FIELD OFFICE ON STATE PROPERTY WITHOUT WRITTEN PERMISSION FROM THE DEPARTMENT.

WHEN MILLED PAVEMENT IS OPEN TO TRAFFIC, THE MAXIMUM GRADE DIFFERENTIAL BETWEEN PASSES OF THE MILLING MACHINE SHALL NOT EXCEED 1/2 INCHES (40 MM) WHERE THE SPEED LIMIT IS 45 MPH (80 KM/H) OR LESS AND 1 INCH (25 MM) WHERE THE SPEED LIMIT IS GREATER THAN 45 MPH (80 KM/H). WITH WRITTEN APPROVAL FROM THE ENGINEER, A MAXIMUM GRADE DIFFERENTIAL OF 3 INCHES (75 MM) MAY BE ALLOWED IF THE EDGE OF THE MILLING IS SLOPED A MINIMUM 1:3 (V:H).

BUTT JOINTS WILL BE INSTALLED AT THE ENDS OF ALL RESURFACING (WHERE RESURFACING MEETS EXISTING PAVEMENT), IN ACCORDANCE WITH THE "BUTT JOINT AND HMA TAPER DETAILS" SHEET INCLUDED IN THE PLANS, UNLESS OTHERWISE SPECIFIED.

THE RESIDENT ENGINEER SHALL CONTACT MR. DON CHIARGUI, AREA TRAFFIC FIELD ENGINEER AT (847) 741-7857 A MINIMUM OF 2 WEEKS PRIOR TO PLACEMENT OF PERMANENT PAVEMENT MARKING.

THE RESIDENT ENGINEER SHALL CONTACT THE TRAFFIC CONTROL SUPERVISOR AT (847) 705-4470 A MINIMUM OF 72 HOURS PRIOR TO THE PLACEMENT OF TEMPORARY TRAFFIC CONTROL DEVICES.

THE RESIDENT ENGINEER SHALL DETERMINE THE LOCATIONS OF CLASS "D" PATCHES AND CURB AND GUTTER REMOVAL AND REPLACEMENT.

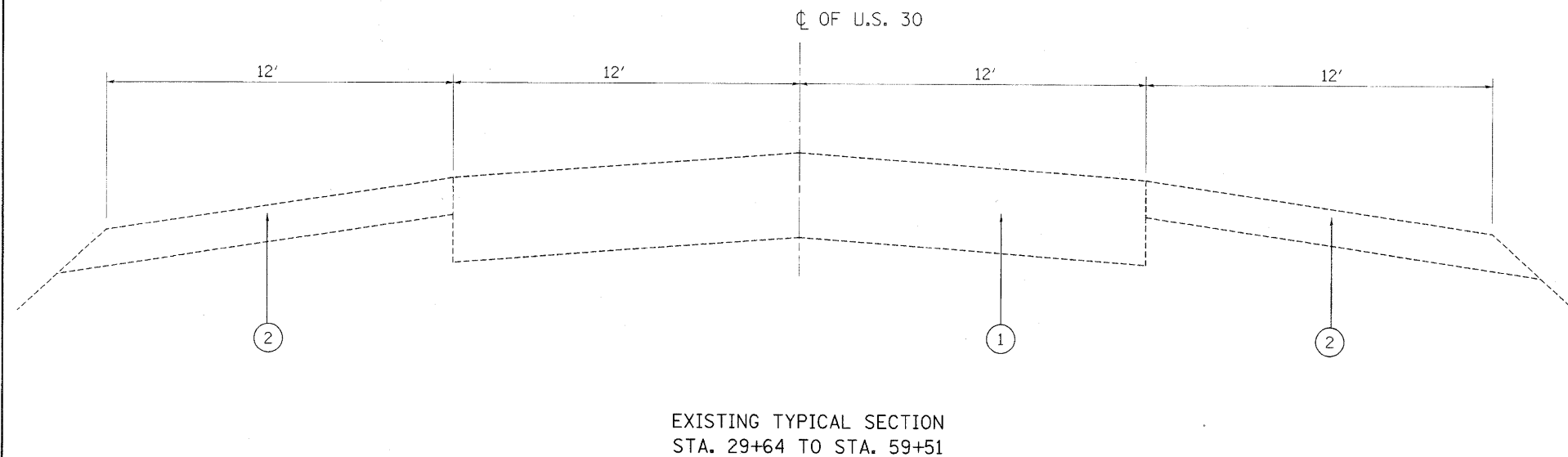
FILE NAME =	USER NAME = ulrichkd	DESIGNED -	REVISED -	<b>STATE OF ILLINOIS DEPARTMENT OF TRANSPORTATION</b>	<b>U.S. ROUTE 30 (KENDALL CO. LINE TO 0.3 MILE W. OF ALBRIGHT RD.) INDEX OF SHEETS, STATE STANDARDS, AND GENERAL NOTES</b>	F.A.P. RTE.	SECTION	COUNTY	TOTAL SHEETS	SHEET NO.
ca\pw\work\PWIDOT\ULRICHKD\0188643\DI0310-sh-t-plandgn	DRAWN -	REVISED -	349			11-RS-5	KANE	14	2	
PLOT SCALE = 50,000 / IN.	CHECKED -	REVISED -	CONTRACT NO. 60159							
PLOT DATE = 1/20/2010	DATE -	REVISED -	FED. ROAD DIST. NO. 1 ILLINOIS FED. AID PROJECT							
					SCALE: 1"=50'	SHEET NO. OF SHEETS		STA. TO STA.		

100% STATE

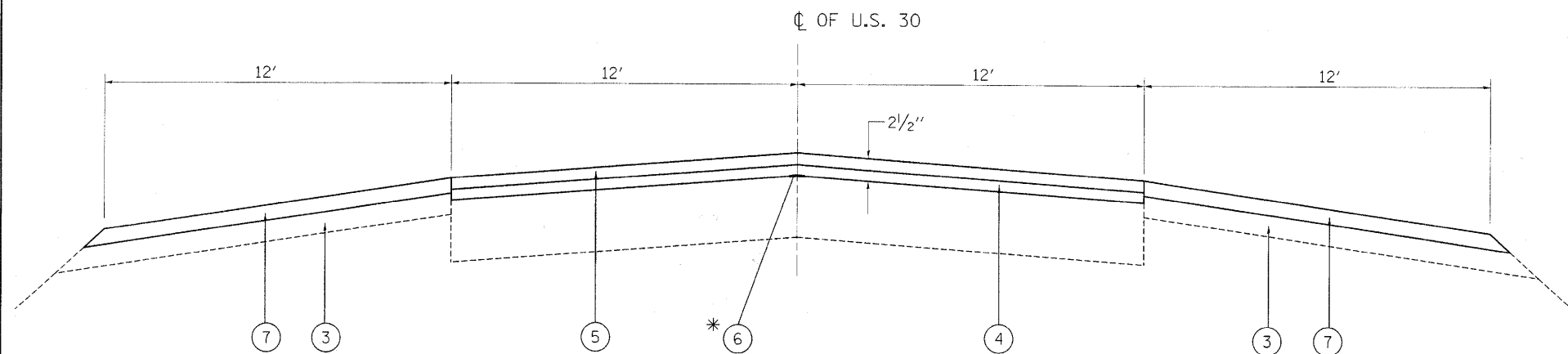
SUMMARY OF QUANTITIES			URBAN TOTAL QUANTITIES	CONSTRUCTION TYPE CODE					SUMMARY OF QUANTITIES			TOTAL QUANTITIES	CONSTRUCTION TYPE CODE				
CODE NO	ITEM	UNIT		I000						CODE NO	ITEM		UNIT				
20201006	GRADING AND SHAPING SHOULDERS	UNIT	60	60													
21101615	TOP SOIL FURNISH AND PLACE, 4"	SQ YD	23	23													
25200110	SODDING, SALT TOLERANT	SQ YD	23	23													
40600200	BITUMINOUS MATERIALS (PRIME COAT)	TON	7	7													
40600300	AGGREGATE (PRIME COAT)	TON	32	32													
40600400	MIXTURE FOR CRACKS, JOINTS, AND FLANGEWAYS	TON	12	12													
40600826	POLYMERIZED LEVELING BINDER (MACHINE METHOD), 1L-4.75, N50	TON	314	314													
40600895	CONSTRUCTING TEST STRIP	EACH	2	2													
40600985	PORTLAND CEMENT CONCRETE SURFACE REMOVAL - BUTT JOINT	SQ YD	24	24													
40603595	POLYMERIZED HOT-MIX ASPHALT SURFACE COURSE, MIX "F", N90	TON	781	781													
42001300	PROTECTIVE COAT	SQ YD	7	7													
44001700	COMBINATION CONCRETE CURB AND GUTTER REMOVAL AND REPLACEMENT	FOOT	100	100													
44201765	CLASS D PATCHES, TYPE II, 10 INCH	SQ YD	86	86													
44201769	CLASS D PATCHES, TYPE III, 10 INCH	SQ YD	48	48													
44201771	CLASS D PATCHES, TYPE IV, 10 INCH	SQ YD	60	60													
48102100	AGGREGATE WEDGE SHOULDER, TYPE B	TON	775	775													
67000400	ENGINEER'S FIELD OFFICE, TYPE A	CAL MO	6	6													
67100100	MOBILIZATION	L SUM	1	1													
70100460	TRAFFIC CONTROL AND PROTECTION, STANDARD T01306	L SUM	1	1													
70100600	TRAFFIC CONTROL AND PROTECTION, STANDARD T01336	L SUM	1	1													
70300100	SHORT-TERM PAVEMENT MARKING	FOOT	1581	1581													
70300220	TEMPORARY PAVEMENT MARKING - LINE 4"	FOOT	7960	7960													
70301000	WORK ZONE PAVEMENT MARKING REMOVAL	SQ FT	527	527													
*78000200	THERMOPLASTIC PAVEMENT MARKING - LINE 4"	FOOT	7960	7960													
*78100100	RAISED REFLECTIVE PAVEMENT MARKER	EACH	50	50													
78300200	RAISED REFLECTIVE PAVEMENT MARKER REMOVAL	EACH	50	50													
X0322256	TEMPORARY INFORMATION SIGNING	SQ FT	52	52													
X4421000	PARTIAL DEPTH PATCHING	TON	73	73													
X4422030	PARTIAL DEPTH REMOVAL 3"	SQ YD	434	434													

\*Specialty Items

FILE NAME =	USER NAME = wirtchkd	DESIGNED -	REVISED -	<b>STATE OF ILLINOIS DEPARTMENT OF TRANSPORTATION</b>	<b>U.S. ROUTE 30 (KENDALL CO. LINE TO 0.3 MILE W. OF ALBRIGHT RD.) SUMMARY OF QUANTITIES</b>	F.A.P. RTE.	SECTION	COUNTY	TOTAL SHEETS	SHEET NO.	
CONTRACT NO. =	SCALE = 50,000' / IN.	DRAWN -	REVISED -			349	11-RS-5	KANE	14	3	
PLOT DATE = 2/9/2010	CHECKED -	REVISED -	DATE -			CONTRACT NO. 60159		FED. ROAD DIST. NO. 1 ILLINOIS FED. AID PROJECT			
						SCALE: N/A	SHEET NO. OF SHEETS	STA. TO STA.			



EXISTING TYPICAL SECTION  
STA. 29+64 TO STA. 59+51



PROPOSED TYPICAL SECTION  
STA. 29+64 TO STA. 59+51

\* EXACT LOCATION & LENGTH OF JOINT REPAIR WILL BE DETERMINED BY R.E.

**LEGEND**

- ① EXISTING P.C.C. PAVEMENT, 10"±
- ② EXISTING AGGREGATE SHOULDER
- ③ PROPOSED GRADING & SHAPING EXISTING AGGREGATE SHOULDER
- ④ PROPOSED POLYMERIZED LEVELING BINDER (MM) IL-6.75, N50, 3/4"
- ⑤ PROPOSED POLYMERIZED HMA SURFACE COURSE, MIX "F", N90, 1 3/4"
- ⑥ PROPOSED JOINT REPAIR (SEE DETAIL ON ROADWAY PLAN)
- ⑦ PROPOSED AGGREGATE SHOULDER, TYPE "B"

\* NOTE: CONTRACTOR SHALL PATCH (CLASS 'D') FIRST BEFORE LAYING HMA OVERLAY.

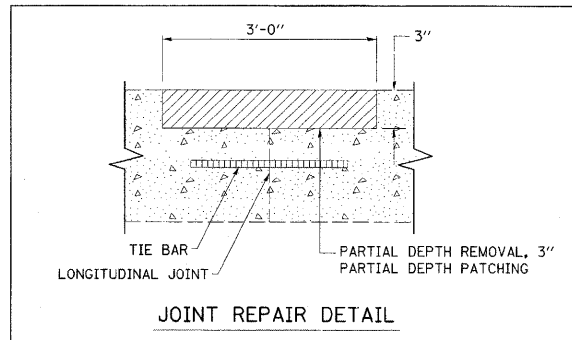
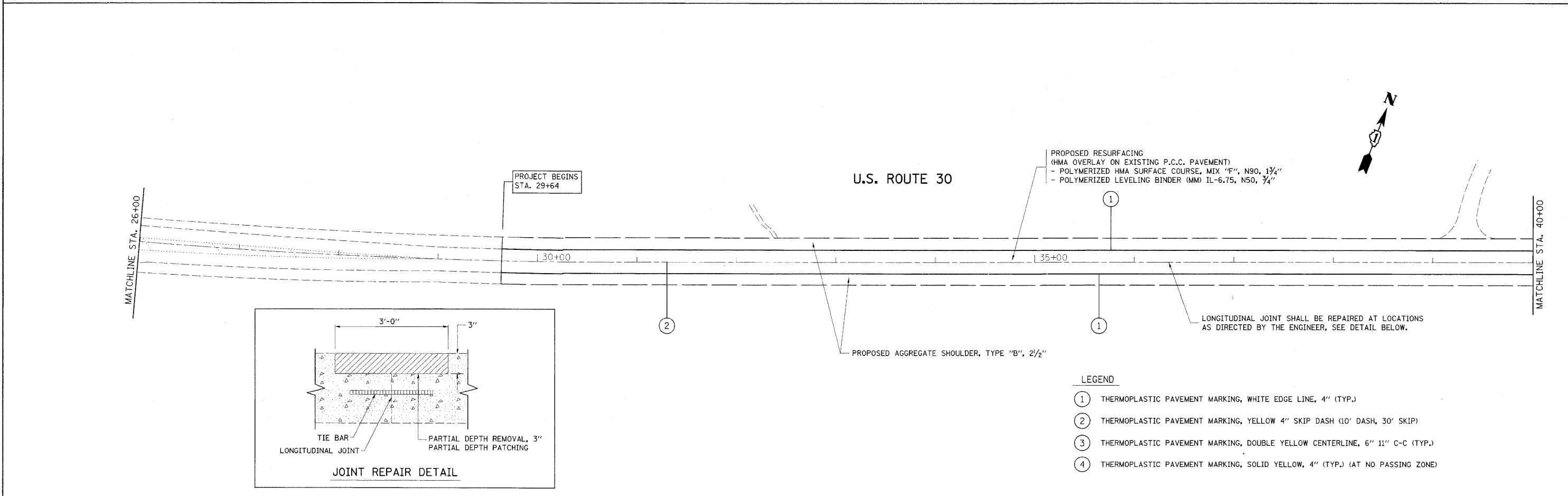
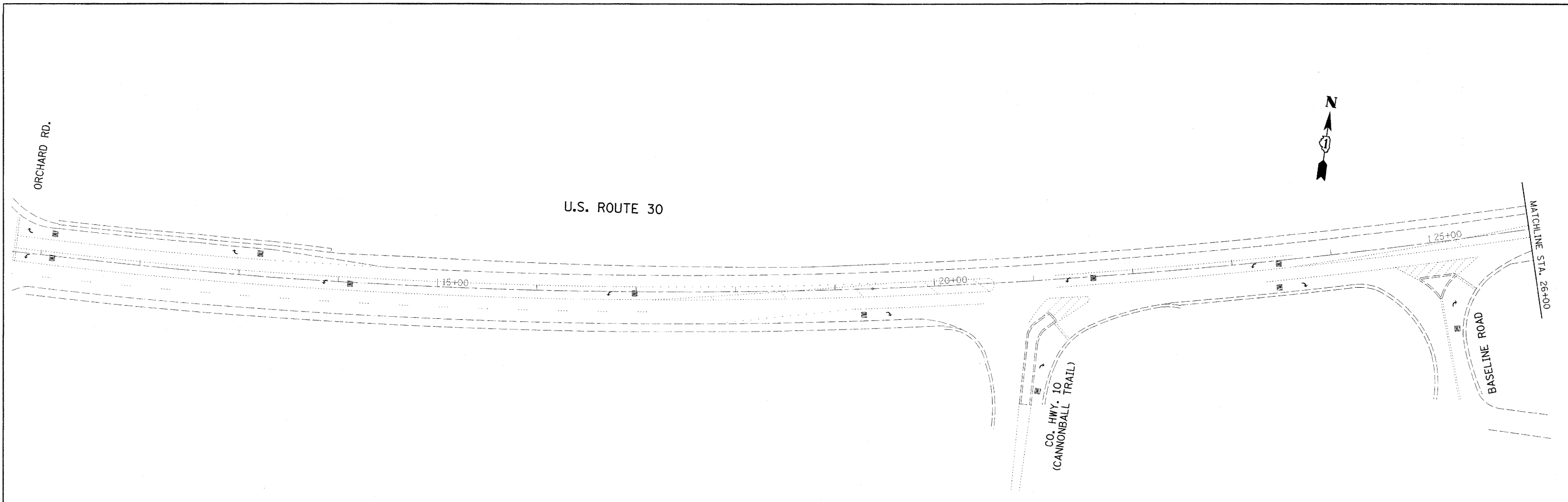
HOT-MIX ASPHALT MIXTURE REQUIREMENTS	
MIXTURE USES	DESIGN AIR VOIDS
POLYMERIZED HMA SURFACE COURSE, MIX "F", N90, 1 3/4", IL-9.5 MM	4% @ 90 GYR
POLYMERIZED LEVELING BINDER (MM) IL-6.75, N50, 3/4"	4% @ 50 GYR
CLASS D PATCHES, 10" (HMA BINDER IL-19.0 MM)	4% @ 70 GYR

**NOTES:**

THE UNIT WEIGHT USED TO CALCULATE ALL HMA SURFACE MIXTURES QUANTITIES IS 112 LBS/SQ YD/IN.

FOR "AC TYPE" AND "PERCENT RAP" SEE DISTRICT ONE SPECIAL PROVISIONS.

FILE NAME =	USER NAME = jeyss	DESIGNED -	REVISED -	<b>STATE OF ILLINOIS DEPARTMENT OF TRANSPORTATION</b>	<b>U.S. ROUTE 30 (KENDALL CO. LINE TO 0.3 MILE W. OF ALBRIGHT RD.) INDEX OF SHEETS, STATE STANDARDS, AND GENERAL NOTES</b>	F.A.P. RTE.	SECTION	COUNTY	TOTAL SHEETS	SHEET NO.	
c:\pwork\pwork\jeyss\00160604\100310	sh:plendgn	DRAWN -	REVISED -			349	11-RS-5	KANE	1/4	4	
	PLOT SCALE = 50.0000 "/ IN.	CHECKED -	REVISED -			CONTRACT NO. 60159					
	PLOT DATE = 11/24/2009	DATE -	REVISED -			SCALE: 1"=50'	SHEET NO. OF SHEETS	STA. TO STA.	FED. ROAD DIST. NO. 1 ILLINOIS FED. AID PROJECT		



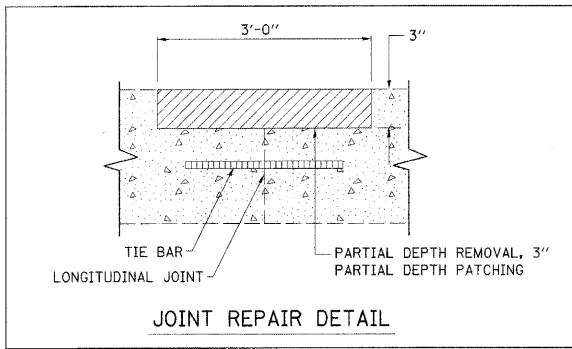
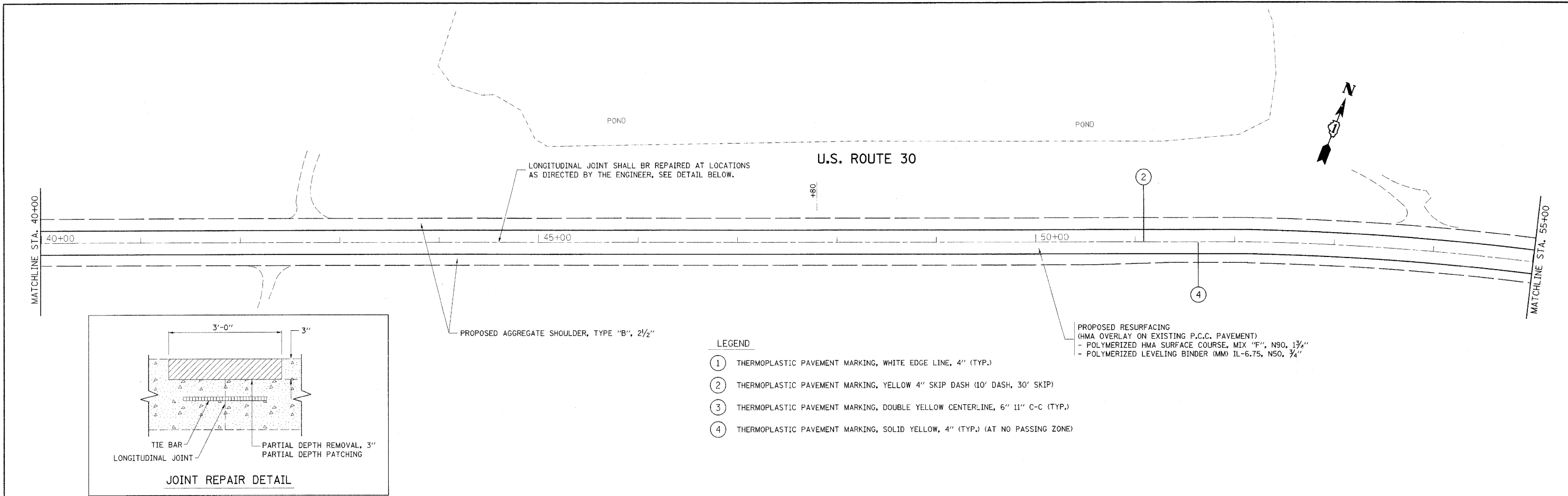
FILE NAME =	USER NAME = leyo	DESIGNED -	REVISED -
c:\work\p\dot\leyo\d0160684\0108310	sht-plan.dgn	DRAWN -	REVISED -
	PLOT SCALE = 50.0000' / IN.	CHECKED -	REVISED -
	PLOT DATE = 11/24/2009	DATE -	REVISED -

**STATE OF ILLINOIS  
DEPARTMENT OF TRANSPORTATION**

**U.S. ROUTE 30  
(KENDALL CO. LINE TO 0.3 MILE W. OF ALBRIGHT RD.)**

SCALE: 1"=50'    SHEET NO. OF SHEETS    STA. TO STA.

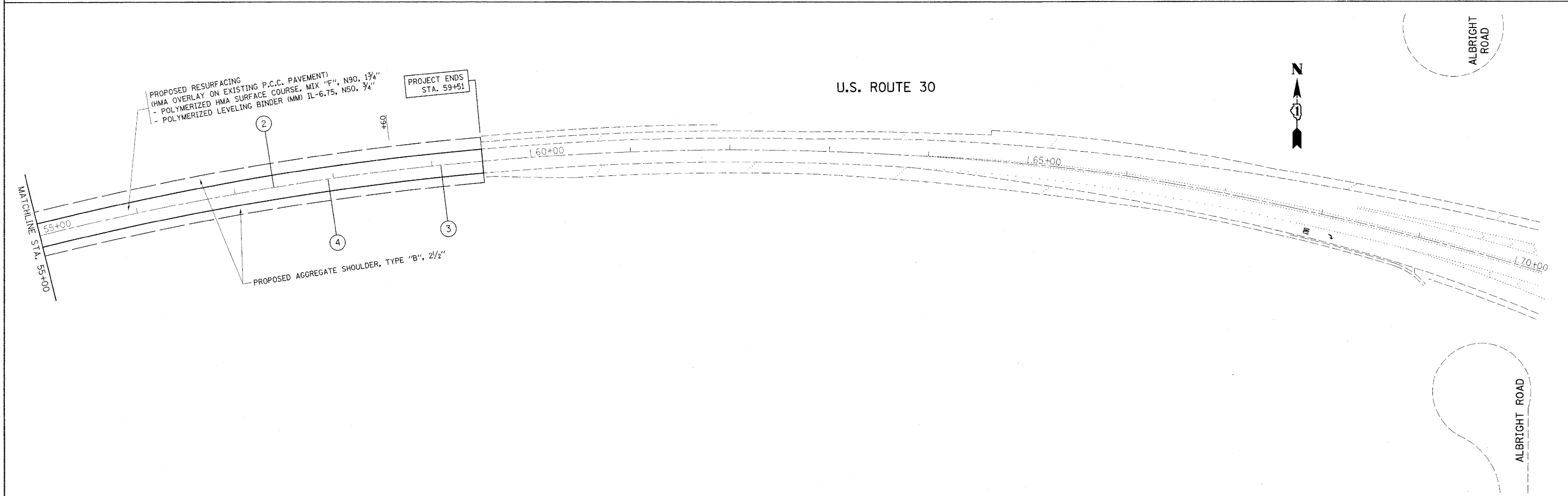
F.A.P. RTE.	SECTION	COUNTY	TOTAL SHEETS	SHEET NO.
349	11-RS-5	KANE	74	5
CONTRACT NO. 60159			ILLINOIS FED. AID PROJECT	



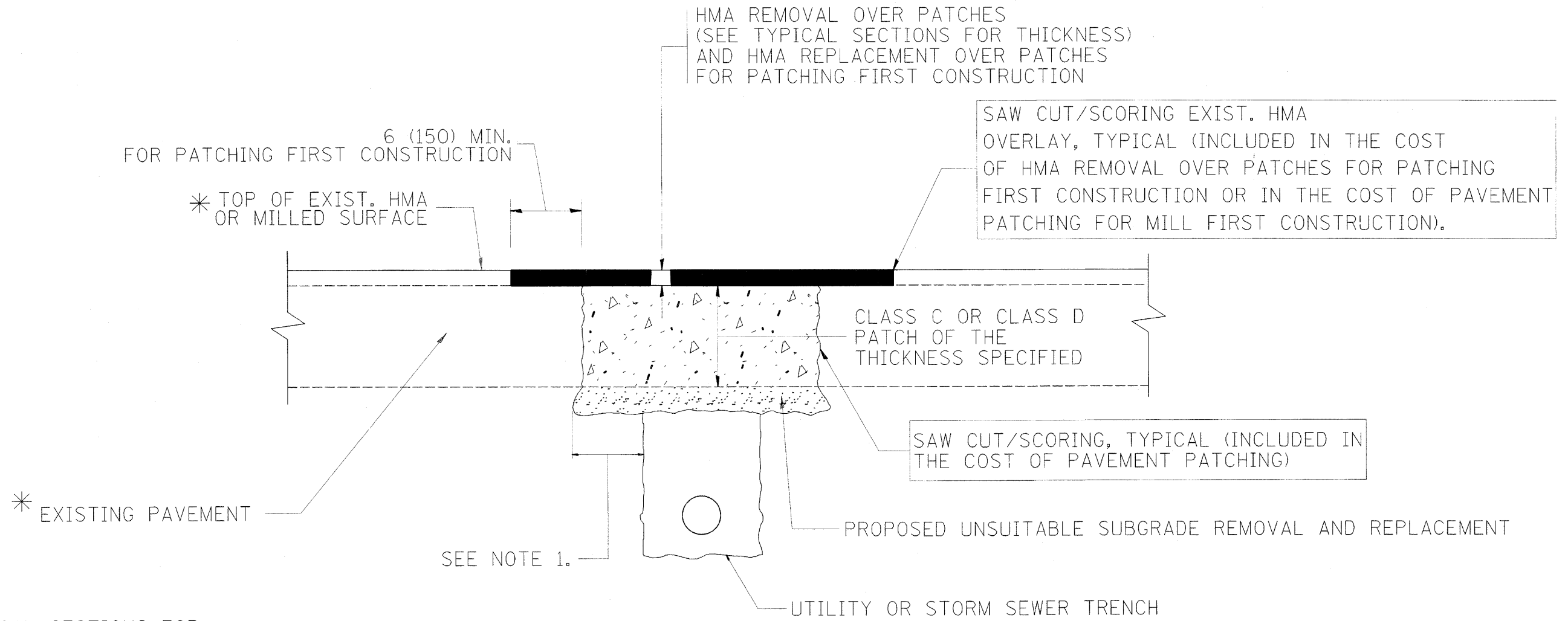
**LEGEND**

- ① THERMOPLASTIC PAVEMENT MARKING, WHITE EDGE LINE, 4" (TYP.)
- ② THERMOPLASTIC PAVEMENT MARKING, YELLOW 4" SKIP DASH (10' DASH, 30' SKIP)
- ③ THERMOPLASTIC PAVEMENT MARKING, DOUBLE YELLOW CENTERLINE, 6" 11" C-C (TYP.)
- ④ THERMOPLASTIC PAVEMENT MARKING, SOLID YELLOW, 4" (TYP.) (AT NO PASSING ZONE)

PROPOSED RESURFACING  
 (HMA OVERLAY ON EXISTING P.C.C. PAVEMENT)  
 - POLYMERIZED HMA SURFACE COURSE, MIX "F", N90, 1 3/4"  
 - POLYMERIZED LEVELING BINDER (MM) IL-6.75, N50, 3/4"



FILE NAME =	USER NAME = leyso	DESIGNED -	REVISED -	<b>STATE OF ILLINOIS DEPARTMENT OF TRANSPORTATION</b>	<b>U.S. ROUTE 30 (KENDALL CO. LINE TO 0.3 MILE W. OF ALBRIGHT RD.)</b>	F.A.P. RTE.	SECTION	COUNTY	TOTAL SHEETS	SHEET NO.	
ct:\proj_work\proj\dot\leyso\1606684\100310	sh:plendgn	DRAWN -	REVISED -			349	11-RS-5	KANE	14	6	
	PLOT SCALE = 50.0000' / 1"	CHECKED -	REVISED -			CONTRACT NO. 60159					
	PLOT DATE = 11/24/2009	DATE -	REVISED -			ILLINOIS FED. AID PROJECT					
				SCALE: 1"=50'		SHEET NO. OF SHEETS		STA. TO STA.			



\* SEE TYPICAL SECTIONS FOR THICKNESS AND MATERIALS

**NOTES:**

1. THE WIDTH OF THE FULL DEPTH PATCH OVER A TRENCH SHALL BE 12 (300) WIDER ON EACH SIDE OF THE TRENCH.
2. FOR METHOD OF MEASUREMENT AND BASIS OF PAYMENT, SEE RECURRING SPECIAL PROVISION "PATCHING WITH HOT-MIX ASPHALT OVERLAY REMOVAL".

SEQUENCE OF CONSTRUCTION (PATCHING FIRST)

1. REMOVE THE EXISTING HMA MATERIAL OVER THE AREA TO BE PATCHED.
2. REMOVE AND REPLACE WITH CLASS C OR D PATCH.
3. REPLACE HMA MATERIAL OVER THE AREA TO BE PATCHED.

SEQUENCE OF CONSTRUCTION (MILLING FIRST)

1. MILL HMA FIRST IF THERE IS AT LEAST 4 1/2 INCHES OR MORE OF HMA MATERIAL ON TOP OF THE EXISTING PAVEMENT OR IF THE PAVEMENT IS FULL DEPTH HMA. A MINIMUM OF 2 INCHES OF HMA MATERIAL SHALL BE IN PLACE AFTER MILLING.
2. REMOVE AND REPLACE WITH FULL DEPTH CLASS D PATCHES TO TOP OF MILLED SURFACE.

ALL DIMENSIONS ARE IN INCHES (MILLIMETERS) UNLESS OTHERWISE SHOWN.

FILE NAME =	USER NAME = lsgoo	DESIGNED - R. SHAH	REVISED - A. ABBAS 04-27-98	<b>STATE OF ILLINOIS DEPARTMENT OF TRANSPORTATION</b>	<b>PAVEMENT PATCHING FOR HMA SURFACED PAVEMENT</b>			F.A.P. RTE.	SECTION	COUNTY	TOTAL SHEETS	SHEET NO.
cd:\pw_work\pawdot\lsgoo\02160664\01st5td.dgn		DRAWN -	REVISED - R. BORO 01-01-07		349	11-RS-5	KANE	74	7			
PLOT SCALE = 50.0000' / IN.		CHECKED -	REVISED - R. BORO 09-04-07		<b>BD400-04 (BD-22)</b>			CONTRACT NO. 60159				
PLOT DATE = 11/24/2009		DATE - 10-25-94	REVISED - K. ENG 10-27-08		SCALE: NONE	SHEET NO. 1 OF 1 SHEETS	STA. TO STA.	FED. ROAD DIST. NO. 1 ILLINOIS FED. AID PROJECT				

VARIABLE - TO MEET EXISTING DIMENSIONS AND FIELD CONDITIONS (SEE NOTE ②)

PROP. CONC. CURB OR CURB AND GUTTER REPLACEMENT IN ACCORDANCE WITH STATE STANDARD 606001. (SEE NOTE ②)

SAW CUT FULL DEPTH - INCLUDED IN THE COST OF SIDEWALK, DRIVEWAY OR MEDIAN SURFACE REMOVAL PAY ITEM.

SEE STATE STANDARD 606001

18" (450) MAX.

EXISTING OR PROPOSED HMA SURFACE (IF APPLICABLE)

1/4" (5) \*\*

EXISTING SIDEWALK, DRIVEWAY, MEDIAN SURFACE OR GROUND.

PROPOSED SIDEWALK, DRIVEWAY PAVEMENT, MEDIAN SURFACE OR SALT TOLERANT SOD AND TOP SOIL, 4" (100) SOD RESTORATION (SEE NOTE ①).

EXISTING CONCRETE PAVEMENT, CONCRETE BASE COURSE OR FLEXIBLE PAVEMENT

T/2 \*

SUITABLE BACKFILL MATERIAL (INCLUDED IN THE COST OF CURB OR CURB AND GUTTER REMOVAL AND REPLACEMENT)

3" (75) MIN.

PROPOSED 3/4" (20) PREFORMED EXPANSION JOINT AT CONCRETE SIDEWALKS, DRIVEWAYS, AND MEDIANS. (INCLUDED IN THE COST OF CURB OR CURB AND GUTTER REMOVAL AND REPLACEMENT.)

\* 3" (75) MINIMUM FROM TOP AND BOTTOM OF THE CONCRETE PAVEMENT OR BASE COURSE.

\*\* IF THE FINAL SURFACE OF THE PAVEMENT IS CONCRETE, THE GUTTER IS TO BE FLUSH WITH THE PAVEMENT.

NOTE: ① SIDEWALK, DRIVEWAY PAVEMENT OR MEDIAN SURFACE SHALL BE SIMILAR TO THE MATERIAL BEING REMOVED AND WILL BE PAID FOR SEPARATELY.

SALT TOLERANT SOD AND TOP SOIL, 4" (100) RESTORATION WILL NOT BE PAID FOR SEPARATELY, BUT SHALL BE INCLUDED IN THE COST OF CURB OR CURB AND GUTTER REMOVAL AND REPLACEMENT.

UNSUITABLE SUB-BASE MATERIAL TO BE REMOVED, IF DIRECTED BY THE ENGINEER, SHALL BE REPLACED WITH EITHER SUB-BASE GRANULAR MATERIAL, TYPE B OR ADDITIONAL THICKNESS OF CONCRETE.

② CURB OR CURB AND GUTTER REPLACEMENT SHALL MATCH THE SHAPE OF THE EXISTING CURB OR CURB AND GUTTER UNLESS OTHERWISE SPECIFIED.

REMOVAL AND REPLACEMENT 4" (100) OR LESS IS INCLUDED IN THE COST OF CURB OR CURB AND GUTTER REMOVAL AND REPLACEMENT.

③ FOR CURB OR CURB AND GUTTER REMOVAL AND REPLACEMENT ADJACENT TO FLEXIBLE PAVEMENT DELETE EPOXY COATED TIE BARS.

REMOVAL AND REPLACEMENT IN EXCESS OF 4" (100) WILL BE PAID FOR IN ACCORDANCE WITH ARTICLE 109.04 OF THE STANDARD SPECIFICATIONS.

④ LONGITUDINAL BARS, IF ENCOUNTERED IN THE EXISTING CURB OR CURB AND GUTTER, ARE NOT TO BE REPLACED. CUTTING AND REMOVING LONGITUDINAL BARS SHALL BE INCLUDED IN THE COST OF CURB OR CURB AND GUTTER REMOVAL AND REPLACEMENT.

PROPOSED #6 (20) EPOXY COATED TIE BARS 24" (600) LONG AT 24" (600) CENTERS WILL NOT BE PAID FOR SEPARATELY. DELETE EPOXY COATED TIE BARS IF EXISTING TIE BARS ARE USUABLE AS DETERMINED BY THE ENGINEER. (SEE NOTE ③).

⑤ THE COST OF HMA SURFACE REMOVAL IN THE EXISTING GUTTER FLAG SHALL BE INCLUDED IN THE COST OF THE CURB AND GUTTER REMOVAL AND REPLACEMENT.

**BASIS OF PAYMENT:**

THIS WORK WILL BE PAID FOR AT THE CONTRACT UNIT PRICE PER FOOT (METER) FOR "CURB REMOVAL AND REPLACEMENT" OR "COMBINATION CONCRETE CURB AND GUTTER REMOVAL AND REPLACEMENT".

⑥ THE REMOVAL AND REPLACEMENT OF THE EXISTING CURB OR CURB AND GUTTER SHALL BE DONE IN ACCORDANCE WITH THE APPLICABLE PORTIONS OF SECTION 440 AND 606 OF THE STANDARD SPECIFICATIONS.

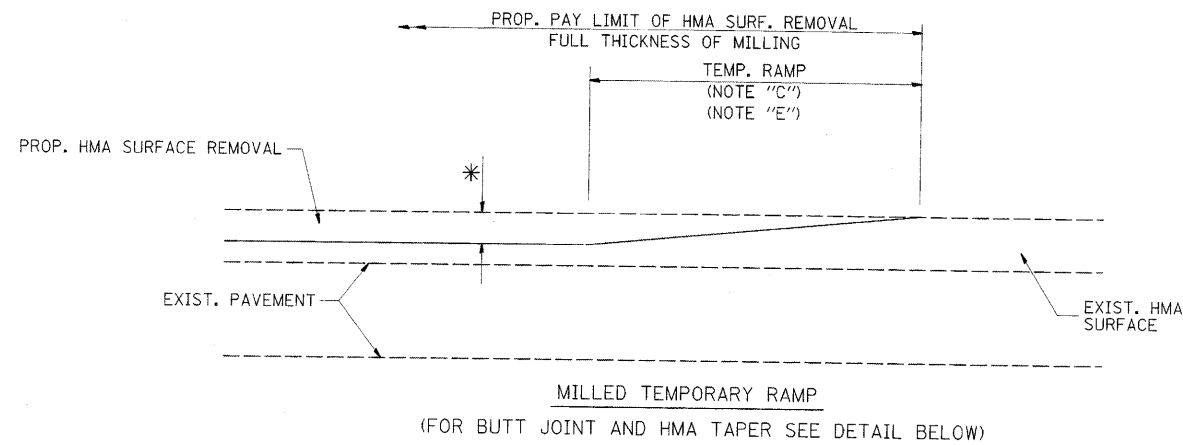
⑦ THE LOCATIONS OF REMOVAL AND REPLACEMENT OF EXISTING CURB OR CURB AND GUTTER SHALL BE DETERMINED BY THE RESIDENT ENGINEER AT THE TIME OF CONSTRUCTION.

# CURB OR CURB AND GUTTER REMOVAL AND REPLACEMENT

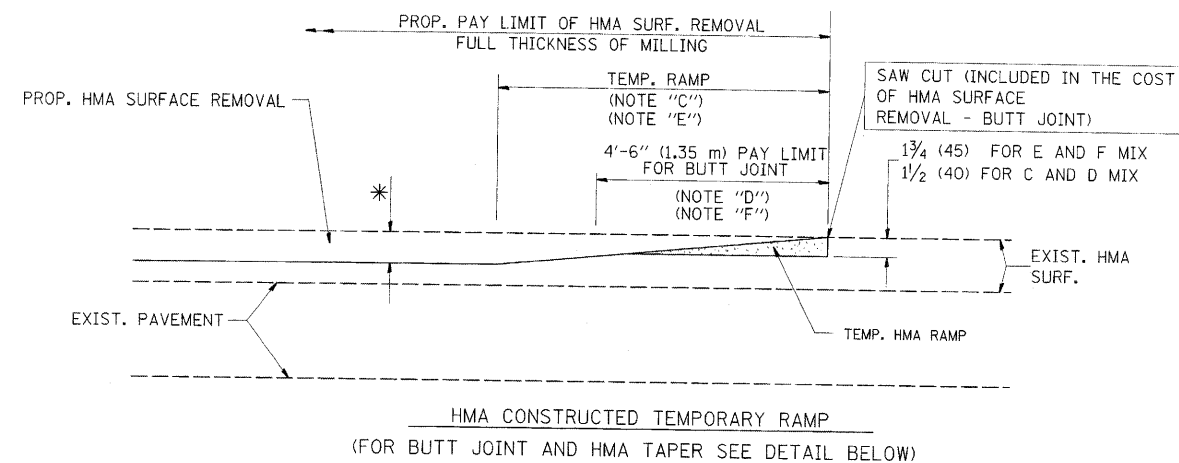
ALL DIMENSIONS ARE IN INCHES (MILLIMETERS) UNLESS OTHERWISE SHOWN.

FILE NAME =	USER NAME = lejgsa	DESIGNED - A. HOUSEH	REVISED - R. SHAH 10-03-96	<b>STATE OF ILLINOIS DEPARTMENT OF TRANSPORTATION</b>	<b>CURB OR CURB AND GUTTER REMOVAL AND REPLACEMENT</b>	F.A.P. RTE. 349	SECTION 11-RS-5	COUNTY KANE	TOTAL SHEETS 14	SHEET NO. 8		
ci:\pwork\pwork\lejgsa\d0160684\DistStd\sign	DRAWN -	REVISED - A. ABBAS 03-21-97	REVISED - M. GOMEZ 01-22-01			SCALE: NONE	SHEET NO. 1 OF 1 SHEETS	STA. TO STA.	BD600-06 (BD-24) CONTRACT NO. 60159			
PLOT SCALE = 50.0000" / IN.	CHECKED -	REVISED - M. GOMEZ 01-22-01	REVISED - R. BORO 01-01-07			FED. ROAD DIST. NO. 1 ILLINOIS FED. AID PROJECT						
PLOT DATE = 11/24/2009	DATE - 03-11-94	REVISED - R. BORO 01-01-07										



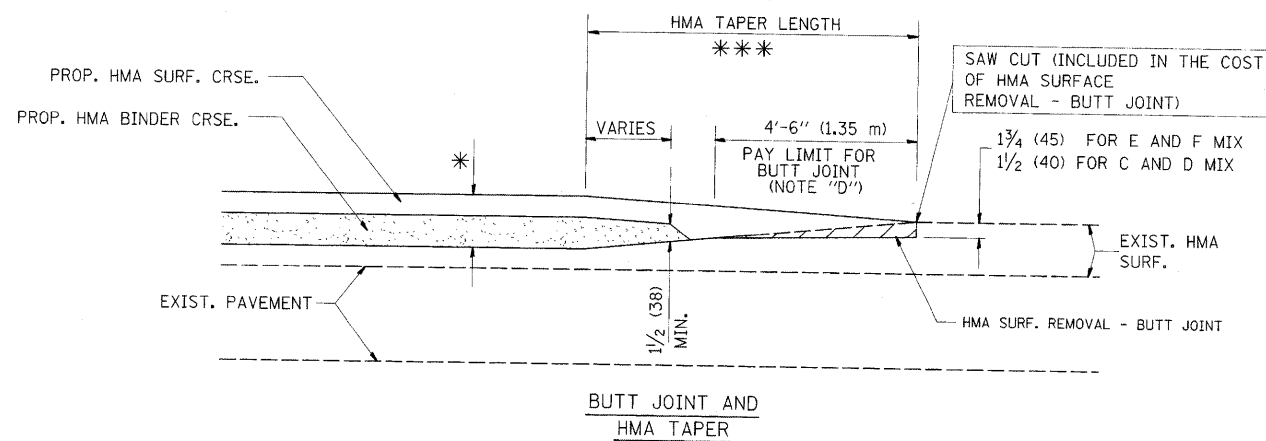


**OPTION 1**

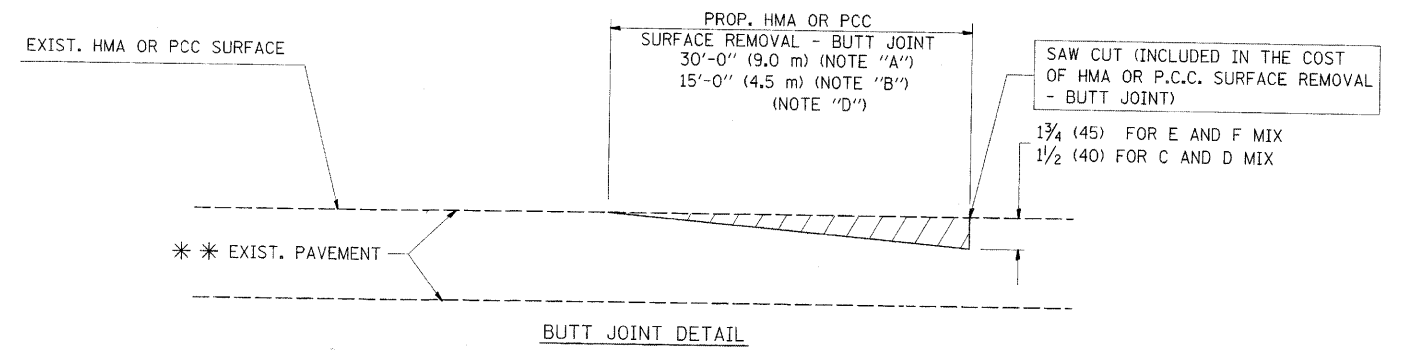


**OPTION 2**

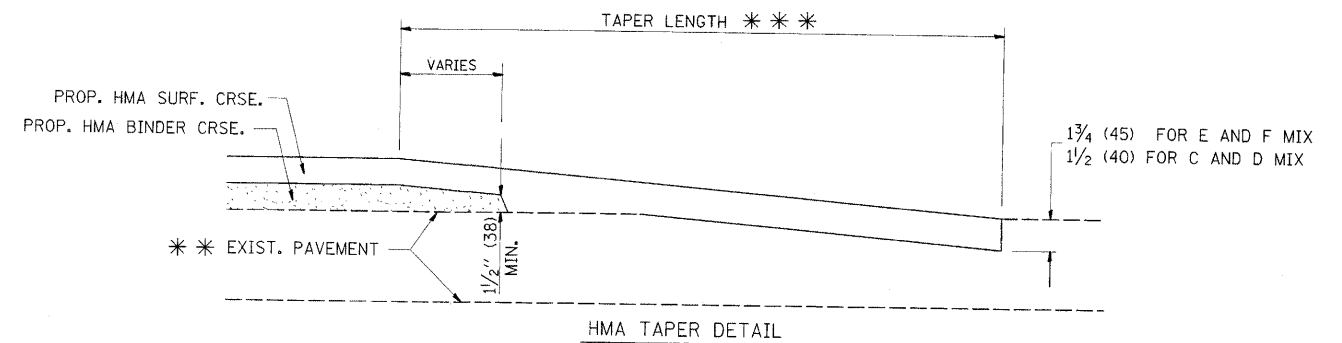
**TYPICAL TEMPORARY RAMP**



**TYPICAL BUTT JOINT AND HMA TAPER FOR MILLING AND RESURFACING**



**BUTT JOINT DETAIL**



**HMA TAPER DETAIL**

**TYPICAL BUTT JOINT AND HMA TAPER FOR RESURFACING ONLY**

\*\*\* PC CONCRETE, HMA OR HMA RESURFACED PAVEMENT.

**NOTES**

- A: MAINLINE ROADWAYS AND MAJOR SIDE ROADS.
- B: MINOR SIDE ROADS.
- C: THE TEMP. RAMP SHALL BE CONSTRUCTED IMMEDIATELY UPON REMOVAL OF THE EXISTING HMA SURFACE.
- D: THE BUTT JOINT SHALL BE CONSTRUCTED IMMEDIATELY PRIOR TO PLACING THE PROPOSED HMA COURSES.
- E: TAPER THE TEMP. RAMP AT A RATE OF 3'-0" (900 mm) PER 1 INCH (25 mm) OF MILLING THICKNESS.
- F: INSTALLATION AND REMOVAL OF THE 4'-6" (1.35 m) TEMP. RAMP IS INCLUDED IN COST OF HMA SURFACE REMOVAL - BUTT JOINT
- G: SEE ARTICLE 406.08 AND 406.14 OF THE STANDARD SPECIFICATIONS FOR "HMA AND/OR PCC SURFACE REMOVAL, BUTT JOINT".
- \* SEE TYPICAL SECTIONS FOR MILLING THICKNESS.
- \*\*\* 20'-0" (6.1 m) PER 1 (25) RESURFACING (NOTE "A")  
10'-0" (3.0 m) PER 1 (25) RESURFACING (NOTE "B")

**BASIS OF PAYMENT:**

THE BUTT JOINT WILL BE PAID FOR AT THE CONTRACT UNIT PRICE PER SQUARE YARD (SQUARE METER) FOR "HOT-MIX ASPHALT SURFACE REMOVAL - BUTT JOINT" OR FOR "PORTLAND CEMENT CONCRETE SURFACE REMOVAL - BUTT JOINT".

ALL DIMENSIONS ARE IN INCHES (MILLIMETERS) UNLESS OTHERWISE SHOWN.

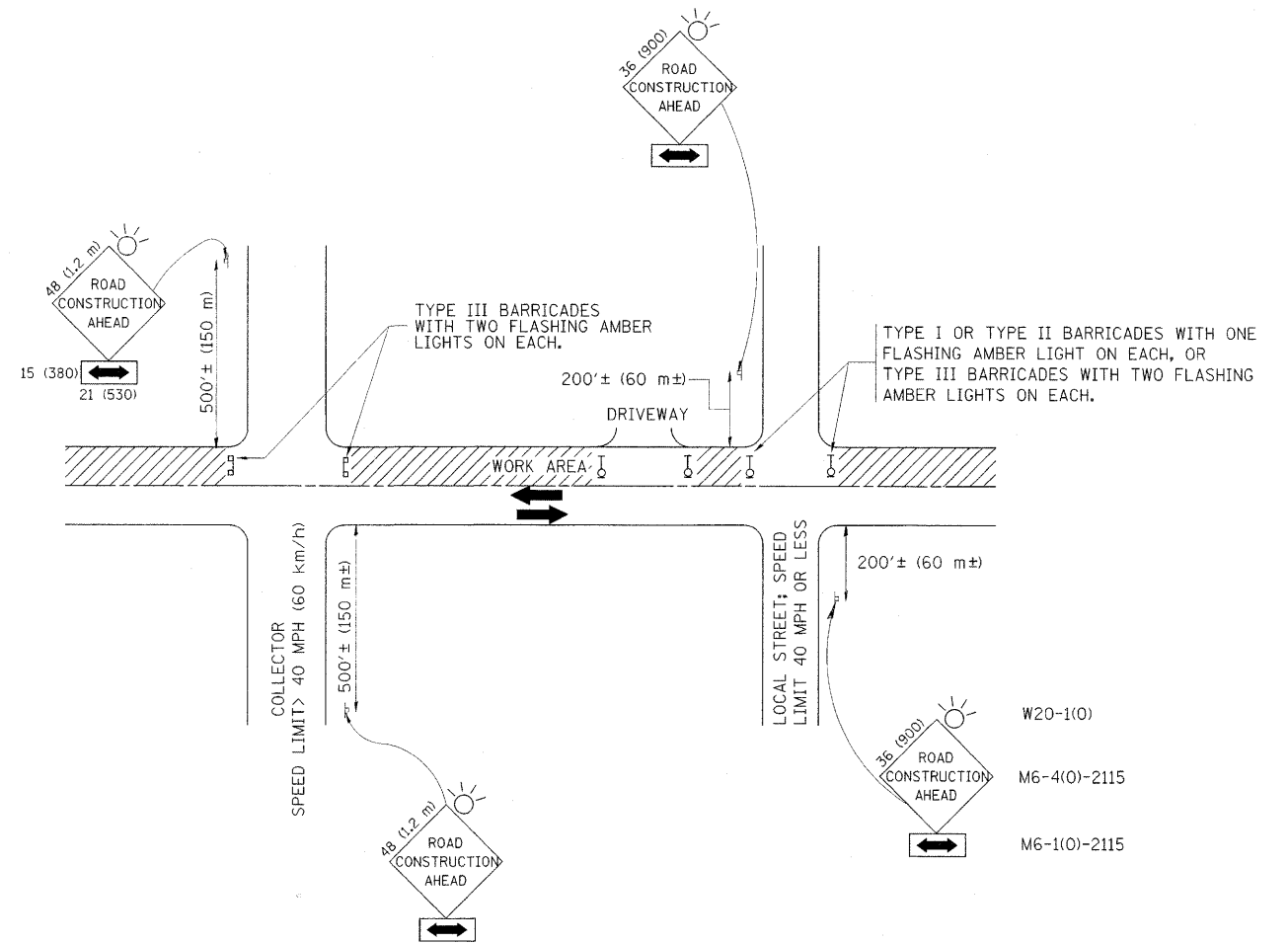
FILE NAME =	USER NAME = lveys	DESIGNED - M. DE YONG	REVISED - R. SHAH 10-25-94
c:\pwork\pwork\lveys\d0160684\DistStd.dgn		DRAWN -	REVISED - A. ABBAS 03-21-97
	PLOT SCALE = 50.00000' / IN.	CHECKED -	REVISED - M. GOMEZ 04-06-01
	PLOT DATE = 11/24/2009	DATE - 06-13-90	REVISED - R. BORO 01-01-07

**STATE OF ILLINOIS  
DEPARTMENT OF TRANSPORTATION**

**BUTT JOINT AND  
HMA TAPER DETAILS**

F.A.P. RTE.	SECTION	COUNTY	TOTAL SHEETS	SHEET NO.
349	11-RS-5	KANE	14	9
BD400-05 BD32			CONTRACT NO. 60159	
FED. ROAD DIST. NO. 1 ILLINOIS FED. AID PROJECT				

SCALE: NONE SHEET NO. 1 OF 1 SHEETS STA. TO STA.



TRAFFIC CONTROL AND PROTECTION FOR SIDE ROADS, INTERSECTIONS, AND DRIVEWAYS

NOTES:

A. FOR NO LANE RESTRICTION ON THE SIDE ROAD OR DRIVEWAYS

1. SIDE ROAD WITH A SPEED LIMIT OF 40 MPH (60 km/h) OR LESS AS SHOWN ON THE DRAWING AND AS DIRECTED BY THE ENGINEER:
  - a) ONE ROAD CONSTRUCTION AHEAD SIGN 36 x 36 (900x900) WITH A FLASHER AND FLAG MOUNTED ON IT APPROXIMATELY 200' (60 m) IN ADVANCE OF THE MAIN ROUTE.
  - b) THE CLOSED PORTION OF THE MAIN ROUTE SHALL BE PROTECTED BY BLOCKING WITH TYPE I, TYPE II OR TYPE III BARRICADES, 1/3 OF THE CROSS SECTION OF THE CLOSED PORTION.
2. SIDE ROAD WITH A SPEED LIMIT GREATER THAN 40 MPH (60 km/h) AS SHOWN ON THE DRAWING AND AS DIRECTED BY THE ENGINEER:
  - a) ONE ROAD CONSTRUCTION AHEAD SIGN 48 x 48 (1.2 m x 1.2 m) WITH A FLASHER MOUNTED ON IT APPROXIMATELY 500' (150 m) IN ADVANCE OF THE MAIN ROUTE.
  - b) THE CLOSED PORTION OF THE MAIN ROUTE SHALL BE PROTECTED BY BLOCKING WITH TYPE III BARRICADES, 1/2 OF THE CROSS SECTION OF THE CLOSED PORTION.
3. WHEN THE SIDE ROAD LIES BETWEEN THE BEGINNING OF THE MAINLINE SIGNING AND THE WORK ZONE, A SINGLE HEADED ARROW (M6-1) SHALL BE USED IN LIEU OF THE DOUBLE HEADED ARROW (M6-4).

B. FOR A LANE CLOSURE ON A SIDE ROAD OR DRIVEWAY:

- USE APPLICABLE PORTIONS OF THE TYPICAL APPLICATION OF TRAFFIC CONTROL DEVICES (STD. 701501, STD. 701606 OR THE APPROPRIATE STANDARD). THE SPACING OF SIGNS AND BARRICADES SHALL BE ADJUSTED FOR FIELD CONDITIONS AS DIRECTED BY THE ENGINEER. THE DIRECTIONAL ARROW SHALL BE COVERED OR REMOVED WHEN NO LONGER CONSISTENT WITH THE SIDE ROAD LANE CLOSURE.
- C. ADVANCE WARNING SIGNS ARE TO BE OMITTED ON DRIVEWAY UNLESS OTHERWISE NOTED.
- D. THE TRAFFIC CONTROL AND PROTECTION FOR SIDE ROADS, INTERSECTIONS, AND DRIVEWAYS SHALL BE INCIDENTAL TO THE COST OF SPECIFIED TRAFFIC CONTROL STANDARDS OR ITEMS.

All dimensions are in millimeters (inches) unless otherwise shown.

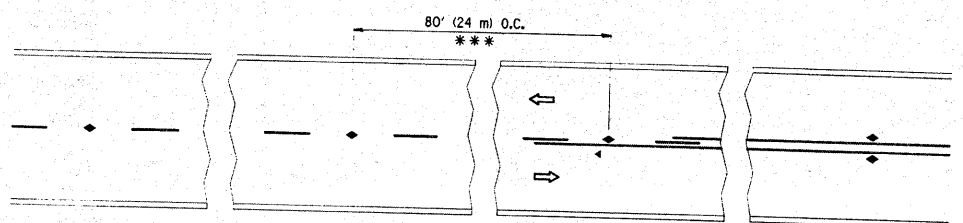
FILE NAME =	USER NAME = lqyso	DESIGNED - LHA	REVISED - J. OBERLE 10-18-95
c:\pr_work\pwr\dot\lqyso\2168664\DistStd.dgn		DRAWN -	REVISED - A. HOUSEH 03-06-96
	PLOT SCALE = 50.0000" / IN.	CHECKED -	REVISED - A. HOUSEH 10-15-96
	PLOT DATE = 11/24/2009	DATE - 06-89	REVISED - T. RAMMACHER 01-06-00

STATE OF ILLINOIS  
DEPARTMENT OF TRANSPORTATION

TRAFFIC CONTROL AND PROTECTION FOR  
SIDE ROADS, INTERSECTIONS, AND DRIVEWAYS

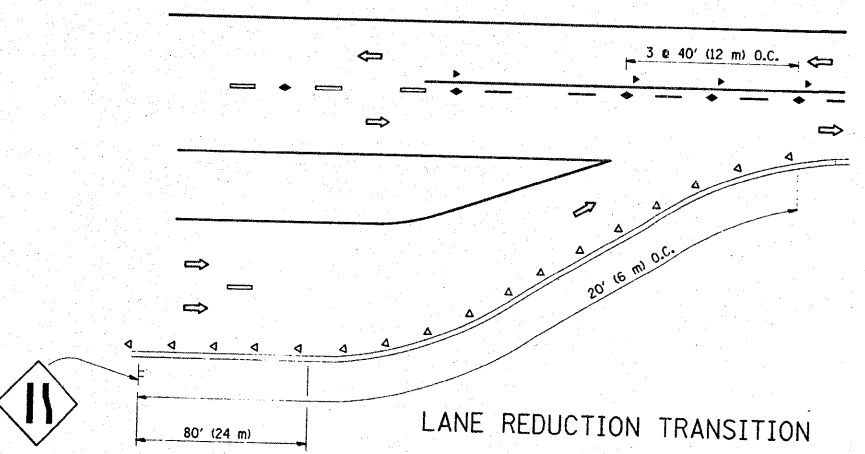
SCALE: NONE SHEET NO. 1 OF 1 SHEETS STA. TO STA.

F.A.P. RTE.	SECTION	COUNTY	TOTAL SHEETS	SHEET NO.
349	11-RS-5	KANE	14	10
TC-10			CONTRACT NO. 60159	
FED. ROAD DIST. NO. 1 ILLINOIS FED. AID PROJECT				

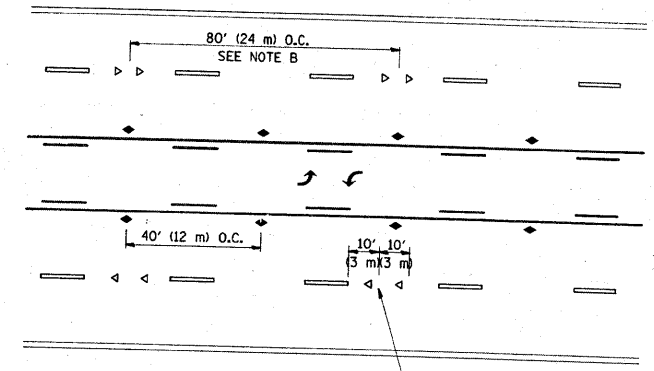


\*\*\* REDUCE TO 40' (12 m) O.C. ON CURVES WITH POSTED OR ADVISORY SPEED 45 M.P.H. (70 km/h) OR LESS.

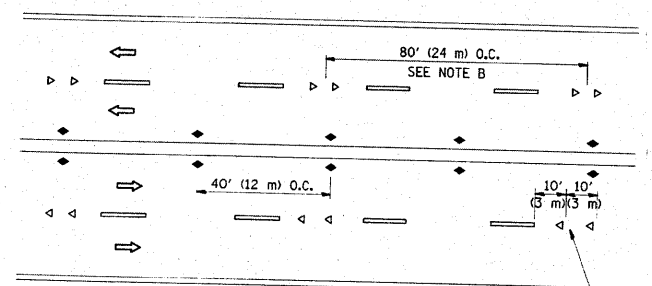
TWO-LANE/TWO-WAY



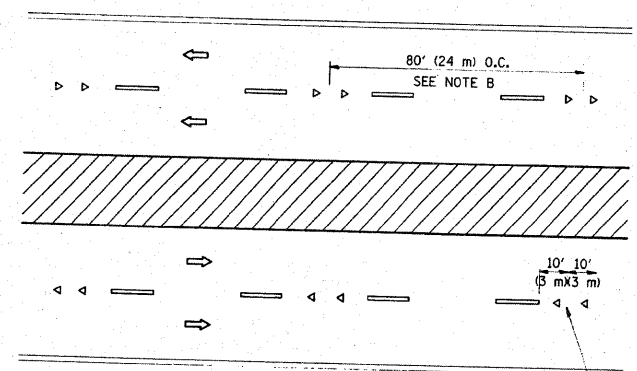
LANE REDUCTION TRANSITION



TWO-WAY LEFT TURN



MULTI-LANE/UNDIVIDED



MULTI-LANE/DIVIDED

GENERAL NOTES

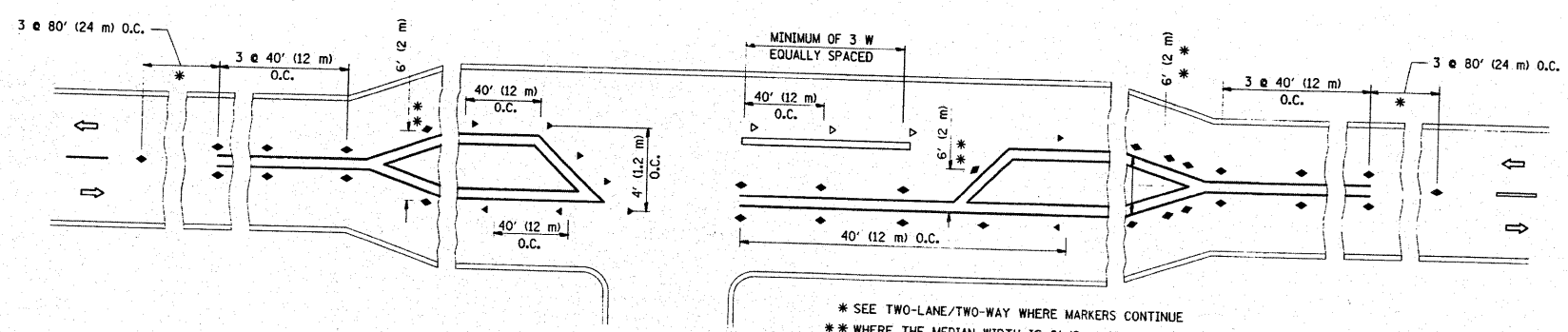
1. MARKERS USED WITH DASHED LINES SHALL BE CENTERED IN THE GAP BETWEEN SEGMENTS.
2. MARKERS USED ADJACENT TO SOLID LINES SHALL BE OFFSET 2 TO 3 (50 TO 75) TOWARD TRAFFIC AS SHOWN.
3. MARKERS THROUGH TANGENTS LESS THAN 500' (150 m) IN LENGTH BETWEEN CURVES SHALL BE INSTALLED AT THE LESSER OF THE TWO CURVE SPACINGS.

SYMBOLS

- YELLOW STRIPE
- WHITE STRIPE
- ◀ ONE-WAY AMBER MARKER
- ◀ ONE-WAY CRYSTAL MARKER (W/O)
- ◆ TWO-WAY AMBER MARKER

LANE MARKER NOTES

- A. USE DOUBLE LANE LINE MARKERS SPACED AS SHOWN.
- B. REDUCE TO 40' (12 m) O.C. ON CURVES WHERE ADVISORY SPEEDS ARE 10 M.P.H. (20 km/h) LOWER THAN POSTED SPEEDS.



LEFT TURN

\* SEE TWO-LANE/TWO-WAY WHERE MARKERS CONTINUE  
 \*\* WHERE THE MEDIAN WIDTH IS 6' (2 m) OR LESS USE TWO-WAY MARKERS.

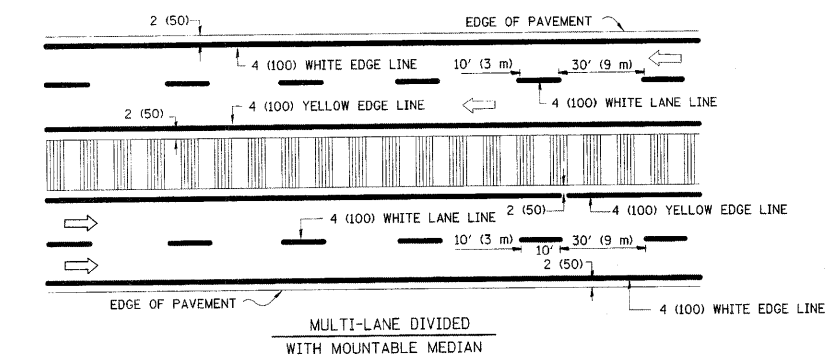
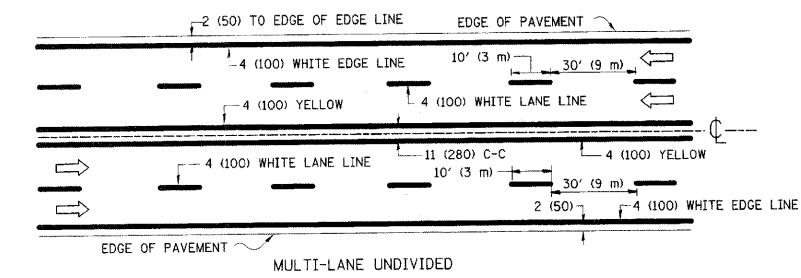
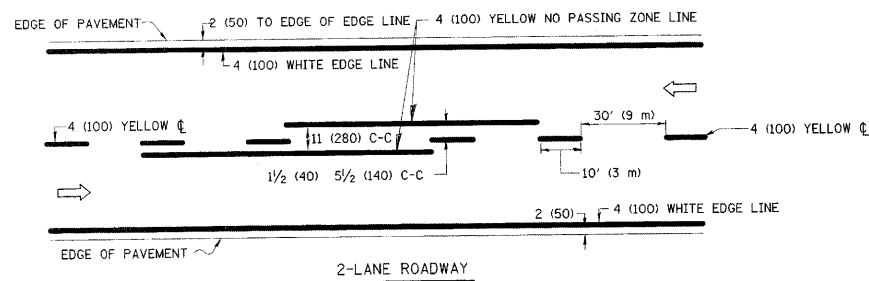
FILE NAME =	USER NAME = lejso	DESIGNED -	REVISED - T. RAMMACHER 09-19-94
PL07 SCALE = 50.0000 / IN.		DRAWN -	REVISED - T. RAMMACHER 03-12-99
PL07 DATE = 1/24/2009		CHECKED -	REVISED - T. RAMMACHER 01-06-00
		DATE -	REVISED - C. JUCIUS 09-09-09

STATE OF ILLINOIS  
 DEPARTMENT OF TRANSPORTATION

TYPICAL APPLICATIONS  
 RAISED REFLECTIVE PAVEMENT MARKERS (SNOW-PLOW RESISTANT)

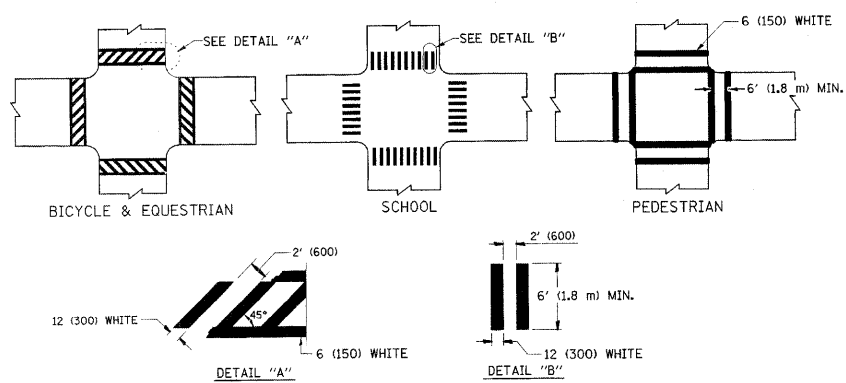
All dimensions are in inches (millimeters) unless otherwise shown.

F.A.P. RTE.	SECTION	COUNTY	TOTAL SHEETS	SHEET NO.
349	11-RS-5	KANE	14	11
TC-11				
FED. ROAD DIST. NO. 1 ILLINOIS FED. AID PROJECT				

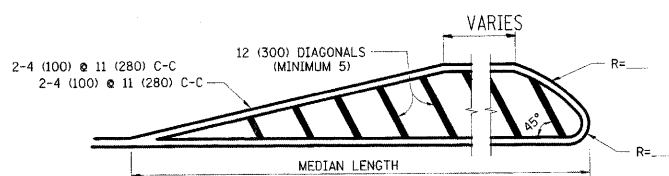
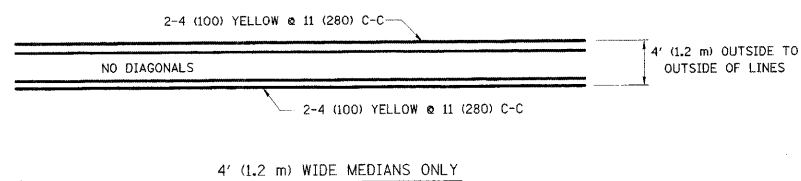


NOTE: MEDIANS WITH BARRIER CURB DO NOT REQUIRE AN EDGE LINE

**TYPICAL LANE AND EDGE LINE MARKING**



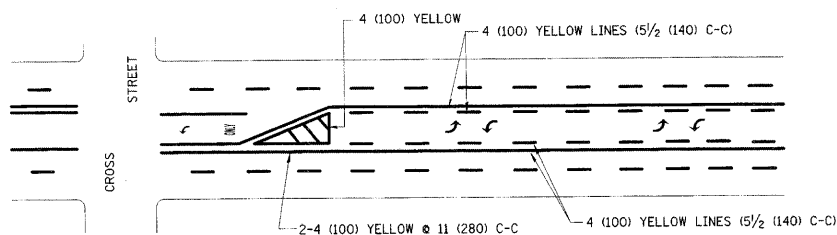
**TYPICAL CROSSWALK MARKING**



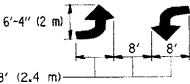
FOR MEDIAN LENGTHS WHERE DIAGONAL SPACING CANNOT BE ATTAINED, USE 5 (FIVE) EQUALLY SPACED DIAGONAL LINES.

DIAGONAL LINE SPACING: 50' (15 m) C-C (LESS THAN 30MPH (50 km/h))  
75' (25 m) C-C 30MPH (50 km/h) TO 45MPH (70 km/h)  
150' (45 m) C-C (MORE THAN 45MPH (70 km/h))

**MEDIANS OVER 4' (1.2 m) WIDE**

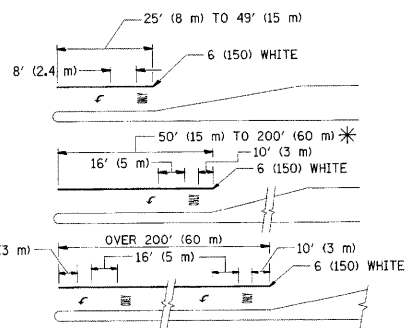


A MINIMUM OF TWO PAIRS OF TURN ARROWS SHALL BE USED, WHITE IN COLOR. ADDITIONAL PAIRS SHALL BE PLACED AT 200' (60 m) TO 300' (90 m) INTERVALS.



**MEDIAN WITH TWO-WAY LEFT TURN LANE**

**TYPICAL PAINTED MEDIAN MARKING**

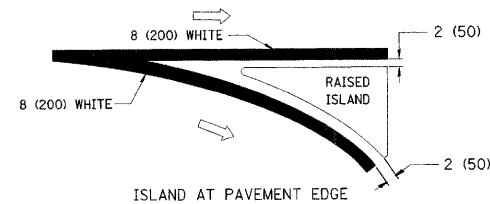
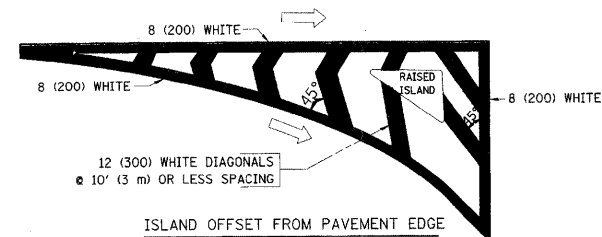


FULL SIZE LETTERS 8' (2.4 m) AND ARROWS SHALL BE USED.  
AREA = 15.6 SQ. FT. (1.5 m<sup>2</sup>) ONLY AREA = 20.8 SQ. FT. (1.9 m<sup>2</sup>)

\* TURN LANES IN EXCESS OF 400' (120 m) IN LENGTH MAY HAVE AN ADDITIONAL SET OF ARROW - "ONLY" INSTALLED MIDWAY BETWEEN THE OTHER TWO SETS OF ARROW - "ONLY".

**TYPICAL LEFT (OR RIGHT) TURN LANE**

**TYPICAL TURN LANE MARKING**



**TYPICAL ISLAND MARKING**

TYPE OF MARKING	WIDTH OF LINE	PATTERN	COLOR	SPACING / REMARKS
CENTERLINE ON 2 LANE PAVEMENT	4 (100)	SKIP-DASH	YELLOW	10' (3 m) LINE WITH 30' (9 m) SPACE
CENTERLINE ON MULTI-LANE UNDIVIDED PAVEMENT	2 @ 4 (100)	SOLID	YELLOW	11 (280) C-C
NO PASSING ZONE LINES FOR ONE DIRECTION FOR BOTH DIRECTIONS	4 (100) 2 @ 4 (100)	SOLID SOLID	YELLOW YELLOW	5/2 (140) C-C FROM SKIP-DASH CENTERLINE 11 (280) C-C OMIT SKIP-DASH CENTERLINE BETWEEN
LANE LINES	4 (100) 5 (125) ON FREEWAYS	SKIP-DASH SKIP-DASH	WHITE WHITE	10' (3 m) LINE WITH 30' (9 m) SPACE
DOTTED LINES (EXTENSIONS OF CENTER, LANE OR TURN LANE MARKINGS)	SAME AS LINE BEING EXTENDED	SKIP-DASH	SAME AS LINE BEING EXTENDED	2' (600) LINE WITH 6' (1.8 m) SPACE
EDGE LINES	4 (100)	SOLID	YELLOW-LEFT WHITE-RIGHT	OUTLINE MOUNTABLE MEDIANS IN YELLOW; EDGE LINES ARE NOT USED NEXT TO BARRIER CURB
TURN LANE MARKINGS	6 (150) LINE; FULL SIZE LETTERS & SYMBOLS (8' (2.4m))	SOLID	WHITE	SEE TYPICAL TURN LANE MARKING DETAIL
TWO WAY LEFT TURN MARKING	2 @ 4 (100) EACH DIRECTION 8' (2.4m) LEFT ARROW	SKIP-DASH AND SOLID IN PAIRS	YELLOW WHITE	10' (3 m) LINE WITH 30' (9 m) SPACE FOR SKIP-DASH; 5/2 (140) C-C BETWEEN SOLID LINE AND SKIP-DASH LINE SEE TYPICAL TWO-WAY LEFT TURN MARKING DETAIL
CROSSWALK LINES (PEDESTRIAN) A. DIAGONALS (BIKE & EQUESTRIAN) B. LONGITUDINAL BARS (SCHOOL)	2 @ 6 (150) 12 (300) @ 45° 12 (300) @ 90°	SOLID SOLID SOLID	WHITE WHITE WHITE	NOT LESS THAN 6' (1.8 m) APART 2' (600) APART 2' (600) APART SEE TYPICAL CROSSWALK MARKING DETAILS.
STOP LINES	24 (600)	SOLID	WHITE	PLACE 4' (1.2 m) IN ADVANCE OF AND PARALLEL TO CROSSWALK, IF PRESENT. OTHERWISE, PLACE AT DESIRED STOPPING POINT, PARALLEL TO CROSSROAD CENTERLINE, WHERE POSSIBLE
PAINTED MEDIANS	2 @ 4 (100) WITH 12 (300) DIAGONALS @ 45° NO DIAGONALS USED FOR 4' (1.2 m) WIDE MEDIANS	SOLID	YELLOW; TWO WAY TRAFFIC WHITE; ONE WAY TRAFFIC	11 (280) C-C FOR THE DOUBLE LINE SEE TYPICAL PAINTED MEDIAN MARKING.
GORE MARKING AND CHANNELIZING LINES	8 (200) WITH 12 (300) DIAGONALS @ 45°	SOLID	WHITE	DIAGONALS: 15' (4.5 m) C-C (LESS THAN 30MPH (50 km/h)) 20' (6 m) C-C 30MPH (50 km/h) TO 45MPH (70 km/h) 30' (9 m) C-C (OVER 45MPH (70 km/h))
RAILROAD CROSSING	24 (600) TRANSVERSE LINES; "RR" IS 6' (1.8 m) LETTERS; 16 (400) LINE FOR "X"	SOLID	WHITE	SEE STATE STANDARD 780001 AREA OF: "R"=3.6 SQ. FT. (0.33 m <sup>2</sup> ) EACH "X"=54.0 SQ. FT. (5.0 m <sup>2</sup> )
SHOULDER DIAGONALS	12 (300) @ 45°	SOLID	WHITE - RIGHT YELLOW - LEFT	50' (15 m) C-C (LESS THAN 30MPH (50 km/h)) 75' (25 m) C-C (30 MPH (50 km/h) TO 45MPH (70 km/h)) 150' (45 m) C-C (OVER 45MPH (70 km/h))

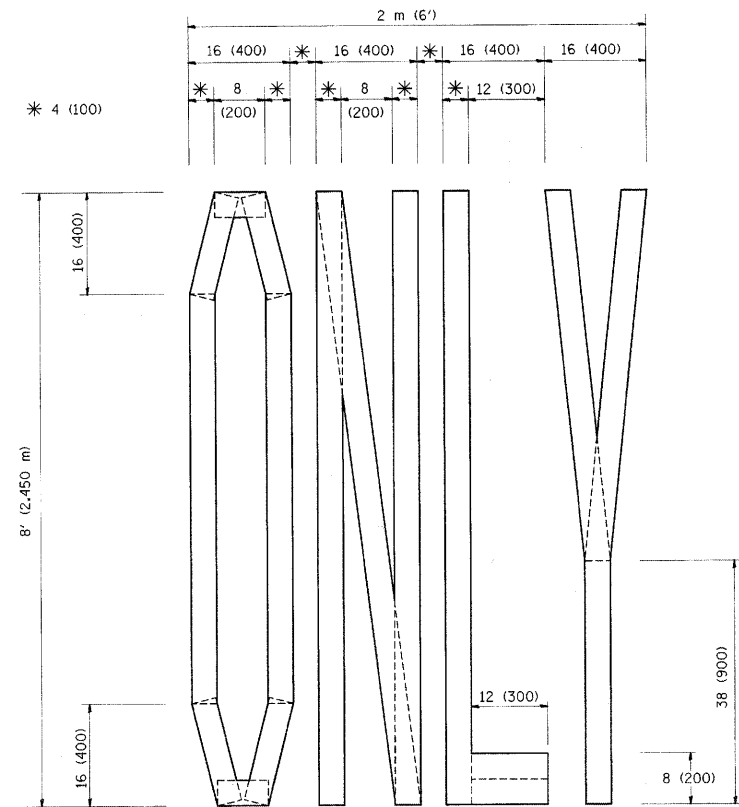
FOR FURTHER DETAILS ON PAVEMENT MARKING REFER TO STANDARD SPECIFICATIONS FOR ROAD AND BRIDGE CONSTRUCTION AND STATE STANDARD 780001.

All dimensions are in inches (millimeters) unless otherwise shown.

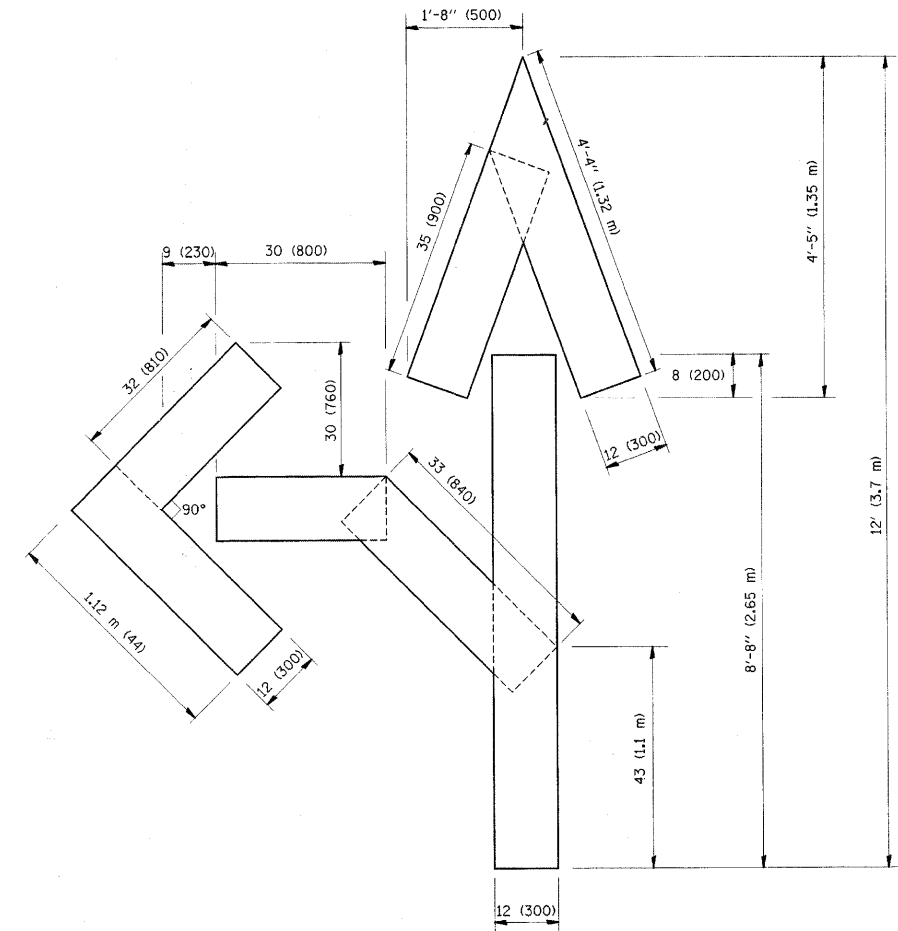
FILE NAME =	USER NAME = leysa	DESIGNED - EVERS	REVISED - T. RAMMACHER 10-27-94
ca:\pr-work\pavdat\leysa\d0160604\DistStd.dgn		DRAWN -	REVISED - C. JUCIUS 09-09-09
	PLOT SCALE = 50.0000 "/ IN.	CHECKED -	REVISED -
	PLOT DATE = 11/24/2009	DATE - 03-19-90	REVISED -

**STATE OF ILLINOIS  
DEPARTMENT OF TRANSPORTATION**

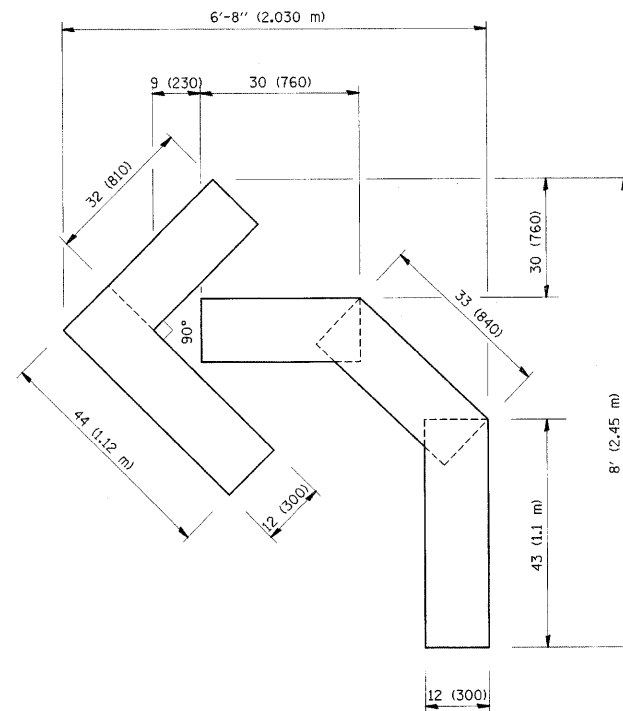
DISTRICT ONE		F.A.P. RTE. 349	SECTION 11-RS-5	COUNTY KANE	TOTAL SHEETS 14	SHEET NO. 12
TYPICAL PAVEMENT MARKINGS		TC-13		CONTRACT NO. 60159		
SCALE: NONE	SHEET NO. 1 OF 1 SHEETS	STA.	TO STA.	FED. ROAD DIST. NO. 1 ILLINOIS FED. AID PROJECT		



QUANTITY  
 4 (100) LINE = 64.1 ft. (19.7 m)  
 21.1 sq. ft. (1.97 sq. m)



QUANTITY  
 4 (100) LINE = 82.5 ft. (25.3 m)  
 27.5 sq. ft. (2.53 sq. m)



QUANTITY  
 4 (100) LINE = 45.5 ft. (13.9 m)  
 15.2 sq. ft. (1.39 sq. m)

All dimensions are in inches (millimeters) unless otherwise shown.

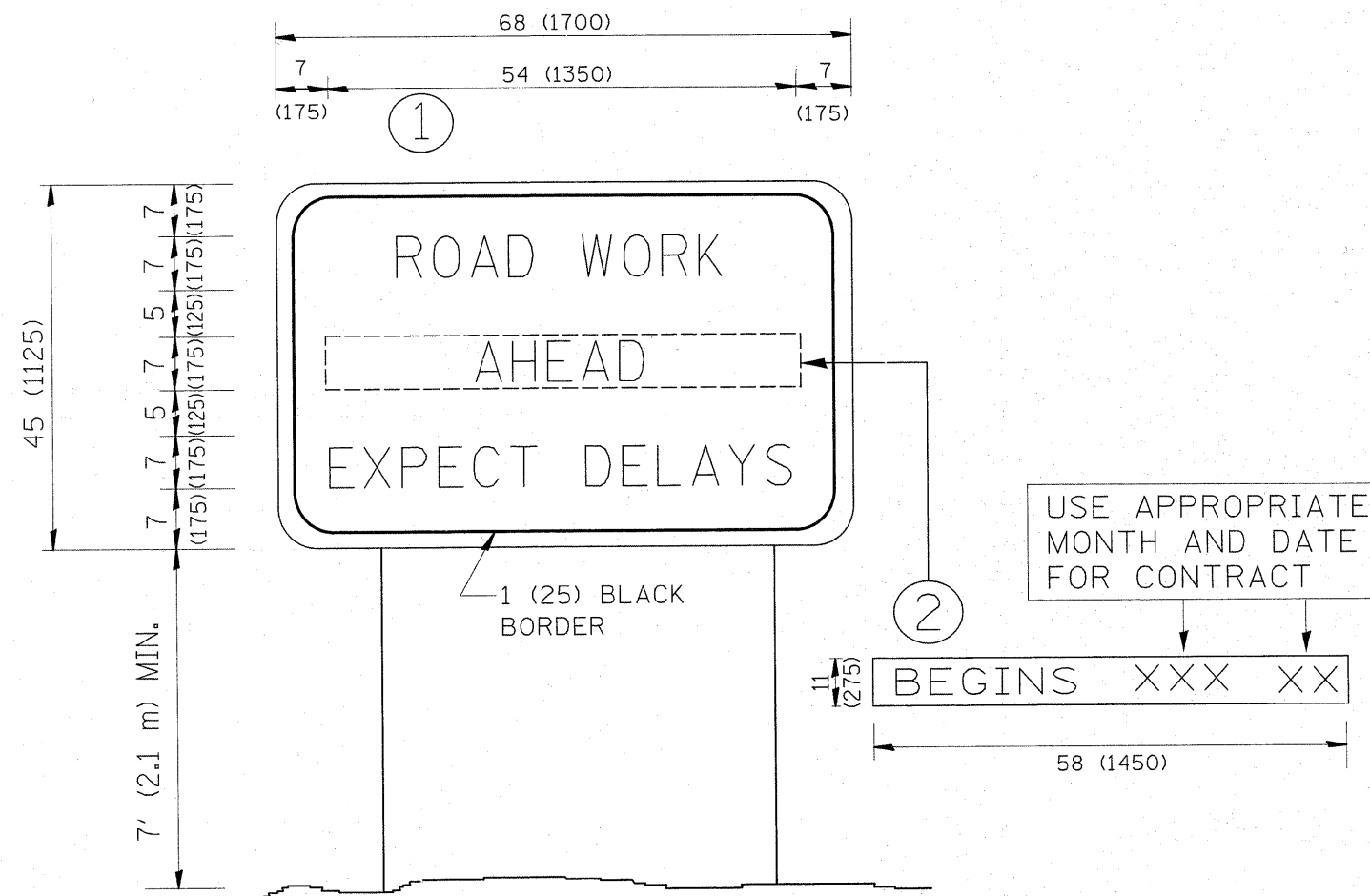
FILE NAME =	USER NAME = jeyso	DESIGNED -	REVISED -T. RAMMACHER 06-05-96
et:\p\work\p\1dot\1\eyso\80160884\DistSto	gn	DRAWN -	REVISED -T. RAMMACHER 11-04-97
PLOT SCALE = 50.0000' / IN.	CHECKED -	REVISED -T. RAMMACHER 03-02-98	
PLOT DATE = 11/24/2009	DATE - 09-18-94	REVISED -E. GOMEZ 08-28-00	

STATE OF ILLINOIS  
 DEPARTMENT OF TRANSPORTATION

PAVEMENT MARKING LETTERS AND SYMBOLS  
 FOR TRAFFIC STAGING

SCALE: NONE SHEET NO. 1 OF 1 SHEETS STA. TO STA.

F.A.P. RTE.	SECTION	COUNTY	TOTAL SHEETS	SHEET NO.
349	11-RS-5	KANE	14	13
TC-16			CONTRACT NO. 60159	
FED. ROAD DIST. NO. 1 ILLINOIS FED. AID PROJECT				



NOTES:

1. USE BLACK LETTERING ON ORANGE BACKGROUND.
2. ERECT SIGNS IN ADVANCE OF THE LOCATION FOR THE "ROAD CONSTRUCTION AHEAD" SIGN AT LOCATIONS AS DIRECTED BY THE ENGINEER.
3. ERECT SIGN ① WITH INSTALLED PANEL ② ONE WEEK PRIOR TO THE START OF CONSTRUCTION.
4. REMOVE PANEL ② SOON AFTER THE START OF CONSTRUCTION.
5. SEE SPECIAL PROVISION FOR "TEMPORARY INFORMATION SIGNING" FOR ADDITIONAL INFORMATION.
6. ONE SIGN ASSEMBLY EQUALS 25.70 SQ. FT. (2.3 SQ. M.)
7. SHALL BE PAID FOR AS TEMPORARY INFORMATION SIGNING.

ALL DIMENSIONS ARE IN INCHES (MILLIMETERS) UNLESS OTHERWISE SHOWN.

FILE NAME =	USER NAME = lcyee	DESIGNED -	REVISED - R. MIRS 09-15-97	<b>STATE OF ILLINOIS DEPARTMENT OF TRANSPORTATION</b>	<b>ARTERIAL ROAD INFORMATION SIGN</b>	F.A.P. RTE.	SECTION	COUNTY	TOTAL SHEETS	SHEET NO.	
cs:\pwork\pwork\lcyee\d0160684\dot5std.dgn		DRAWN -	REVISED - R. MIRS 12-11-97			349	11-RS-5	KANE	14	14	
PLOT SCALE = 50.0000" / IN.		CHECKED -	REVISED - T. RAMMACHER 02-02-99			<b>TC-22</b>		CONTRACT NO. 60159			
PLOT DATE = 11/24/2009		DATE -	REVISED - C. JUCIUS 01-31-07			SCALE: NONE	SHEET NO. 1 OF 1 SHEETS	STA.	TO STA.	FED. ROAD DIST. NO. 1 (ILLINOIS) FED. AID PROJECT	

15