

F.A.I. RTE.	SECTION	COUNTY	TOTAL SHEETS	SHEET NO.
57	99-2VB-1-1	WILL	38 *	1
FED. ROAD DIST. NO.	ILLINOIS	CONTRACT NO. 60J25		

D-91-215-10 38+3=41

STATE OF ILLINOIS
DEPARTMENT OF TRANSPORTATION
DIVISION OF HIGHWAYS

**PLANS FOR PROPOSED
FEDERAL AID HIGHWAY**

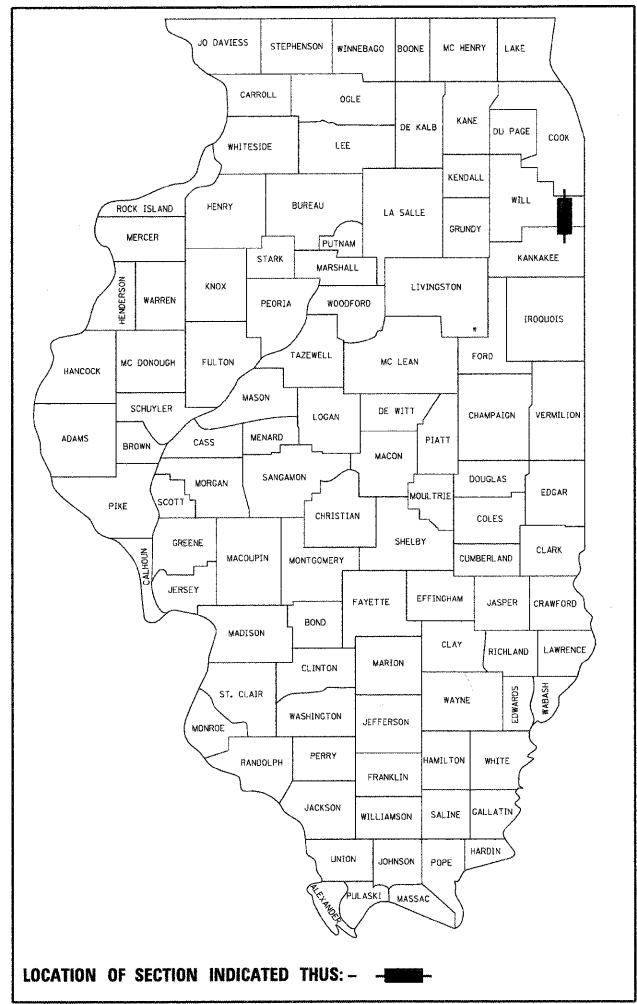
**(F.A.I. 57) I-57 NB & SB OVER ABANDONED RR
(12.8 MILES SOUTH OF US ROUTE 30)**

**SECTION: 99-2VB-1-1
WILL COUNTY**

PROJECT: IM-057-7(287)327

C-91-215-10

**BRIDGE REHABILITATION PROJECT
SN 099-0038 & 099-0039**



LOCATION OF SECTION INDICATED THUS: - [black rectangle] -

**STATE OF ILLINOIS
DEPARTMENT OF TRANSPORTATION
DIVISION OF HIGHWAYS**

SUBMITTED JANUARY 28, 2010

Diane M. O'Keefe
DEPUTY DIRECTOR OF HIGHWAYS, REGION ENGINEER

March 19 2010
Scott E. Stitt, P.E.
ASSISTANT ENGINEER OF DESIGN AND ENVIRONMENT

March 19 2010
Christine M. Reed
DIRECTOR OF HIGHWAYS, CHIEF ENGINEER

**PRINTED BY THE AUTHORITY
OF THE STATE OF ILLINOIS**

LONCO, INC.
CONSULTING ENGINEERS
1560 WALL ST., SUITE 222
NAPERVILLE, ILLINOIS 60563 PH: (630) 577-9100

W. Klyce
062-047827
REGISTERED
PROFESSIONAL
ENGINEER
ILLINOIS
Exp. 11/30/11

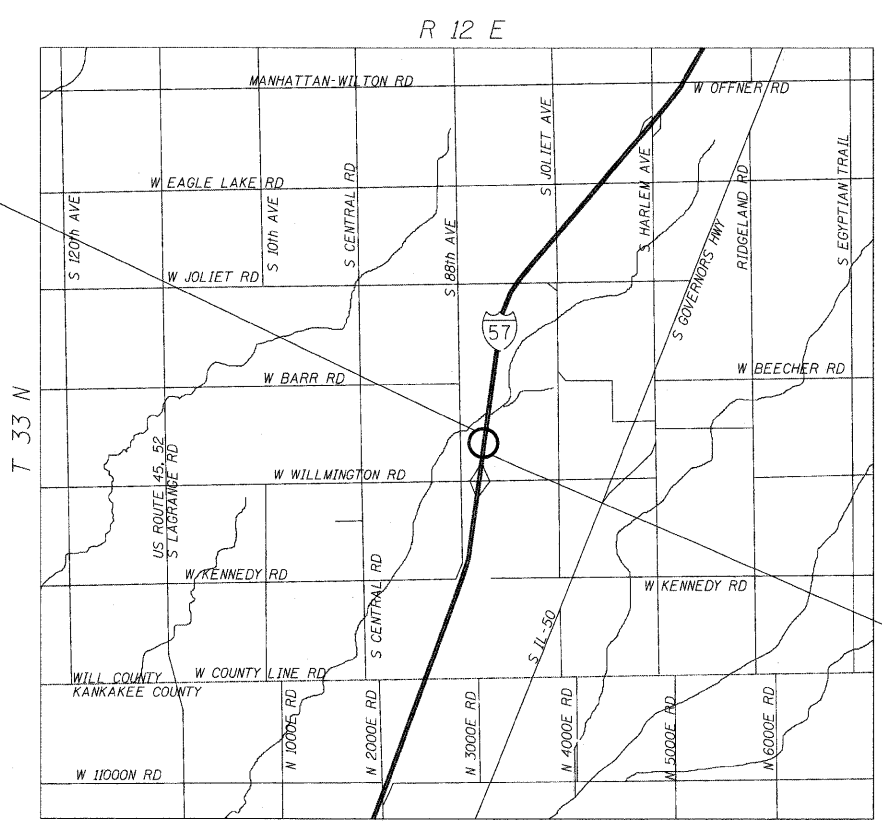
**PROJECT LOCATED IN THE TOWNSHIP OF
PEOTONE, WILL COUNTY, ILLINOIS**

FOR INDEX OF SHEETS, SEE SHEET NO. 2

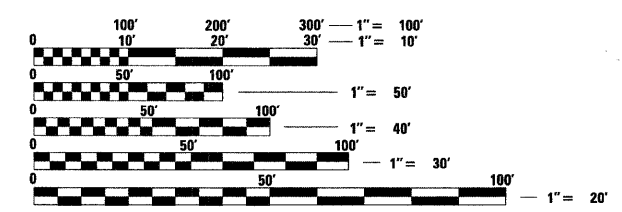
**DESIGN DESIGNATION
OTHER PRINCIPAL ARTERIAL**

**ADT 31000 (2009)
POSTED SPEED LIMIT 65 MPH**

*PROJECT BEGINS
STA. 940+38 SB
STA. 939+74 NB*



*PROJECT ENDS
STA. 943+21 SB
STA. 942+74 NB*



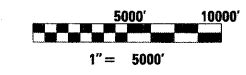
FULL SIZE PLANS HAVE BEEN PREPARED USING STANDARD ENGINEERING SCALES. REDUCED SIZED PLANS WILL NOT CONFORM TO STANDARD SCALES. IN MAKING MEASUREMENTS ON REDUCED PLANS, THE ABOVE SCALES MAY BE USED.

**J.U.L.I.E.
JOINT UTILITY LOCATION INFORMATION FOR EXCAVATION
1-800-892-0123
OR 811**

**PROJECT MANAGER: KIM HARVEY (847) 705-4055
PROJECT ENGINEER: ERSKINE W. KLYCE (847) 705-4594**

CONTRACT NO. 60J25

LOCATION MAP



NET AND GROSS LENGTH OF PROJECT = 347' = 0.066 MI