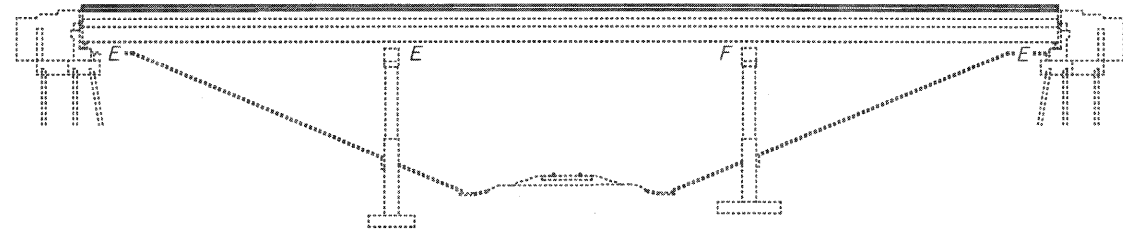


Existing Structure: Existing Structure No. 099-0038(NB) & 099-0039(SB) were built in 1962 as F.A.I. Rte. 57, Section 99-2VB. Existing structures are 3 span continuous wide flange beam bridge on pile supported piers and abutments, with 7" deck slab and 2" bituminous wearing surface. Traffic to be maintained using stage construction.

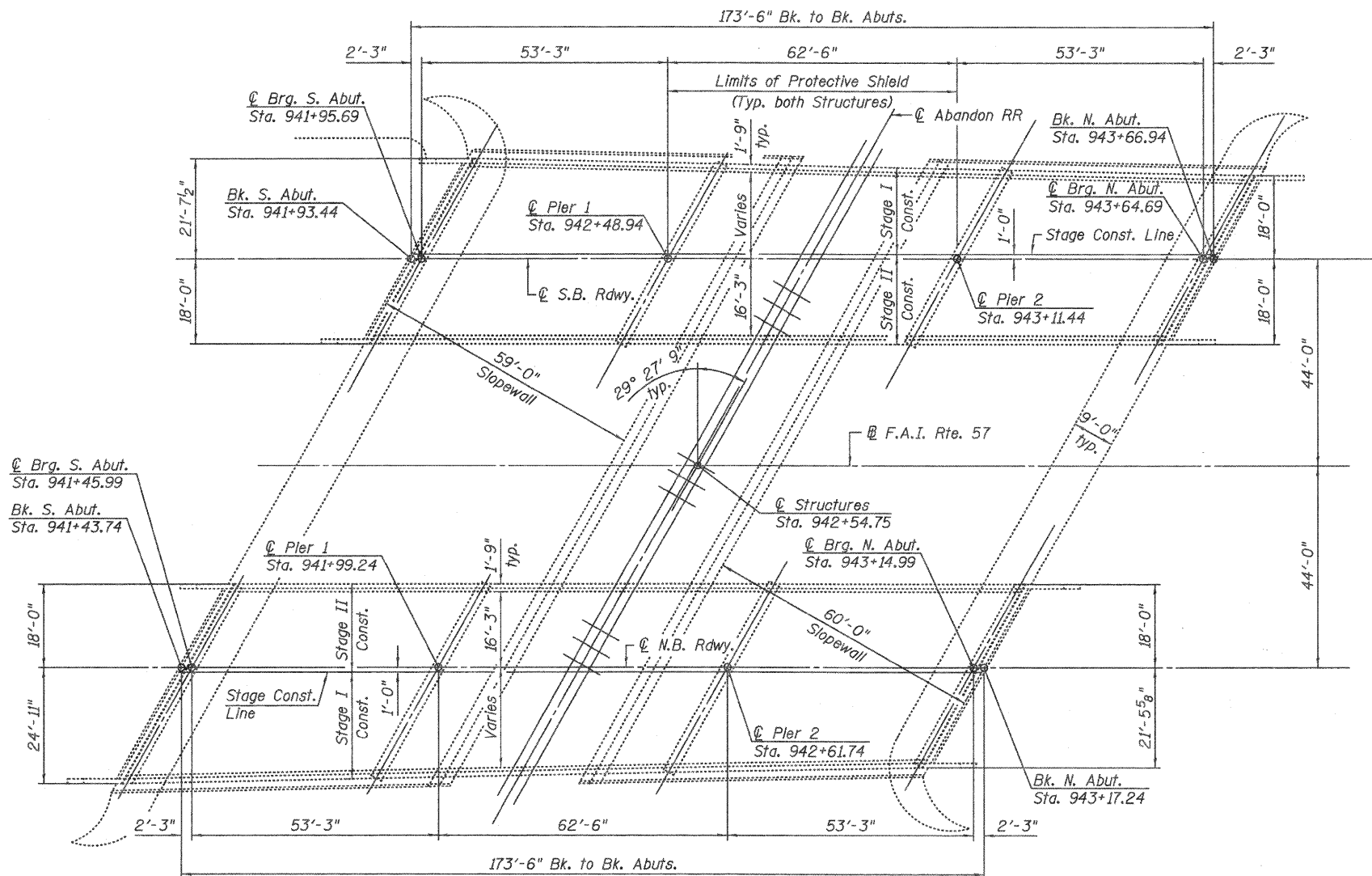
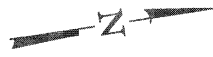
STATE OF ILLINOIS
DEPARTMENT OF TRANSPORTATION

INDEX OF SHEETS

1. General Plan and Elevation
2. General Notes and Bill of Material
3. Stage Construction Details
4. Temporary Concrete Barrier for Stage Construction
5. Deck Slab Repair Plan
- 6.-7. Parapet Extension Details
- 8.-11. Joint Replacement Details
12. Expansion Joint Details
- 13.-14. Bridge Approach Slab Details
15. Type I Bearing Details
16. Type II Bearing Details
- 17.-18. Abutment Repair Details
- 19.-20. Pier Repair Details
21. Slope Wall Repair
22. Drain Details
23. Bar Splicer Details



ELEVATION



PLAN

SCOPE OF WORK

1. Remove concrete deck and parapet adjacent to expansion joints.
2. Provide Preformed Joint Strip Seal expansion joints at abutments.
3. Replace concrete deck and parapet adjacent to expansion joints.
4. Apply 1/2" hydro-scarification to deck slab.
5. Repair deck slab.
6. Place 2 1/4" latex concrete overlay on bridge deck.
7. Place bituminous overlay on approaches.
8. Apply protective coat and bridge deck grooving to top of bridge deck overlay and new concrete at joints.
9. Jack and remove existing abutment bearings and replace with elastomeric bearings.
10. Repair deteriorated concrete at substructures.
11. Plug or extend existing deck drains.

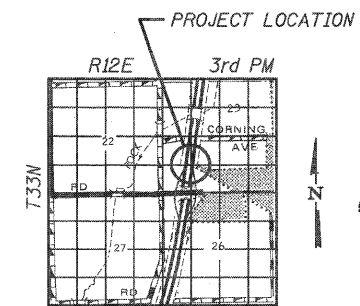
STATE OF ILLINOIS
SEAL OF WILLIAM H. EMMETT
081-005468
02-27-2010
Expires: 11/30/2010
Sheets 1 thru 12 and 15 thru 23

STATE OF ILLINOIS
SEAL OF WILLIAM H. EMMETT
081-005150
exp. 11/30/10
Sheets 13 & 14

LOADING HS20-44
Original Construction

DESIGN SPECIFICATIONS
2002 Standard Specifications for Highway Bridges 17th Edition

DESIGN STRESSES
NEW CONSTRUCTION
f'c = 3,500 psi
fy = 60,000 psi (Reinforcement)
fy = 36,000 psi (Structural Steel)



LOCATION SKETCH

GENERAL PLAN AND ELEVATION
I-57 OVER ABANDONED RAILROAD
F.A.I. RTE. 57 - SECTION 99-2VB-I-1
WILL COUNTY
STATION 942+54.75
STRUCTURE NO. 099-0038 (NB)
STRUCTURE NO. 099-0039 (SB)

DESIGNED - CMV
CHECKED - SDS
DRAWN - DLH
CHECKED - CMV

WHKS & CO.
ENGINEERING
7018 KINGSMILL CT.,
SPRINGFIELD, IL
(217) 483-9457
DESIGN FIRM #184001036

SHEET NO. 1	F.A.I. RTE.	SECTION	COUNTY	TOTAL SHEETS	SHEET NO.
23 SHEETS	57	99-2VB-I-1	WILL	38	11
C-91-215-10			CONTRACT NO. 60J25		
ILLINOIS FED. AID PROJECT					