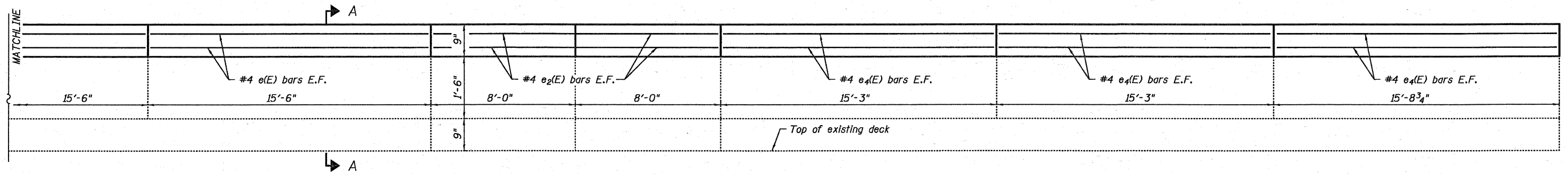
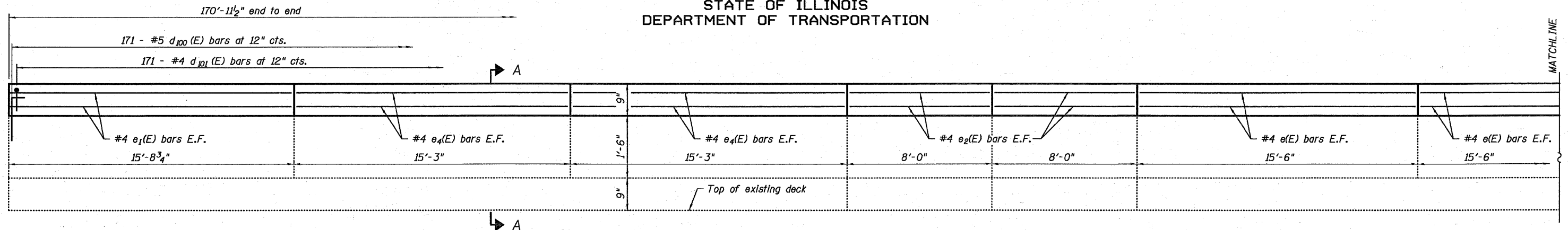
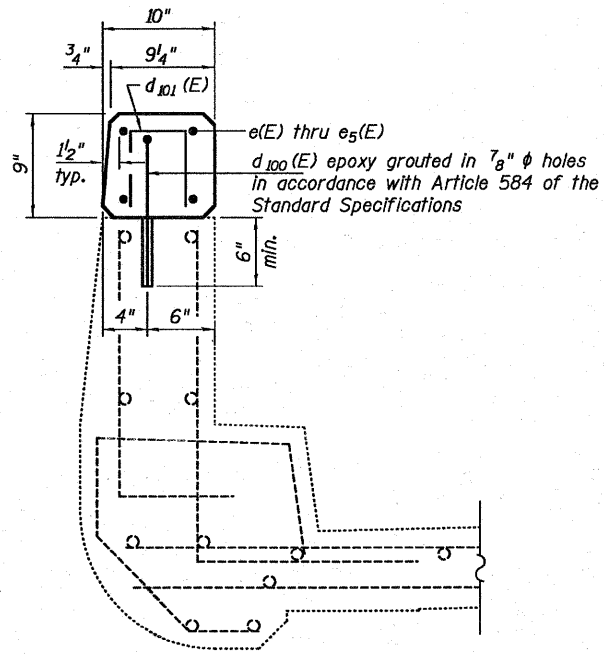


STATE OF ILLINOIS
DEPARTMENT OF TRANSPORTATION



SB BRIDGE - EAST PARAPET / NB BRIDGE - WEST PARAPET ELEVATION
(Inside Face)

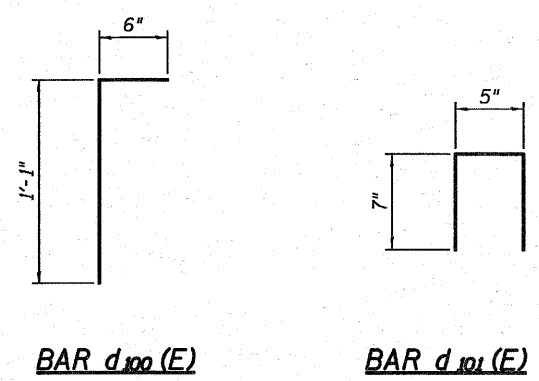


SECTION A-A
(Section thru parapet extension)

Notes:
Protective Coat shall be applied to top and inside face of parapet extensions.
Cost of drilling and epoxy grouting d(E) bars shall be included with the cost of reinforcement bars, epoxy coated.

BILL OF MATERIAL
(TWO BRIDGES)

Bar	No.	Size	Length	Shape
d100(E)	685	#5	1'-7"	┌
d101(E)	685	#4	1'-7"	┐
e(E)	32	#4	15'-3"	—
e1(E)	36	#4	15'-5"	—
e2(E)	64	#4	7'-9"	—
e3(E)	8	#4	15'-6"	—
e4(E)	52	#4	15'-0"	—
e5(E)	16	#4	14'-9"	—
Reinforcement Bars, Epoxy Coated		Pound	3,650	
Concrete Superstructure		Cu. Yd.	15.2	
Protective Coat		Sq. Yd.	117	
Bridge Rail Removal		Foot	683	



DESIGNED - CMV
CHECKED - SDS
DRAWN - DLH
CHECKED - CMV

WHKS & CO.
ENGINEERING
7018 KINGSMILL CT.,
SPRINGFIELD, IL
(217) 483-9457
DESIGN FIRM #184001038

(Sheet 2 of 2)
PARAPET EXTENSION DETAILS
I-57 OVER ABANDONED RAILROAD
F.A.I. RTE. 57 - SECTION 99-2VB-I-1
WILL COUNTY
STATION 942+54.75
STRUCTURE NO. 099-0038 (NB)
STRUCTURE NO. 099-0039 (SB)

SHEET NO. 7 23 SHEETS	F.A.I. RTE.	SECTION	COUNTY	TOTAL SHEETS	SHEET NO.
	57	99-2VB-I-1	WILL	38	17
C-91-215-10			CONTRACT NO. 60J25		
ILLINOIS FED. AID PROJECT					