

STATE OF ILLINOIS  
DEPARTMENT OF TRANSPORTATION

**GENERAL NOTES**

Reinforcement bars shall conform to the requirements of ASTM A 706 Gr 60. See Special Provisions.

Reinforcement bars designated (E) shall be epoxy coated.

Prior to pouring the new concrete deck, all heavy or loose rust, loose mill scale, and other loose or potentially detrimental foreign material shall be removed from the surfaces in contact with concrete. Tightly adhered paint may remain unless otherwise noted. Removal shall be accomplished by methods that will not damage the steel and the cost will be included in the pay item covering removal of the existing concrete.

As directed by the Engineer, existing construction accessories welded to the top flange of beams and girders shall be removed. The weld areas shall be ground flush and inspected for cracks using magnetic particle testing (MT) or dye penetrant testing (PT) by qualified personnel approved by the Engineer. Any cracks that can not be removed by grinding 1/4 in. deep shall be identified and reported to the Bureau of Bridges and Structures for further disposition. The cost of removing welded accessories, grinding and inspecting weld areas and grinding cracks will be paid for according to Article 109.04 of the Standard Specifications.

Plan dimensions and details relative to existing plans are subject to nominal construction variations. The Contractor shall field verify existing dimensions and details affecting new construction and make necessary approved adjustments prior to construction or ordering of materials. Such variations shall not be cause for additional compensation for a change in scope of the work, however, the Contractor will be paid for the quantity actually furnished at the unit price bid for the work.

The existing structural steel coating contains lead. The Contractor shall take appropriate precautions to deal with the presence of lead on this project.

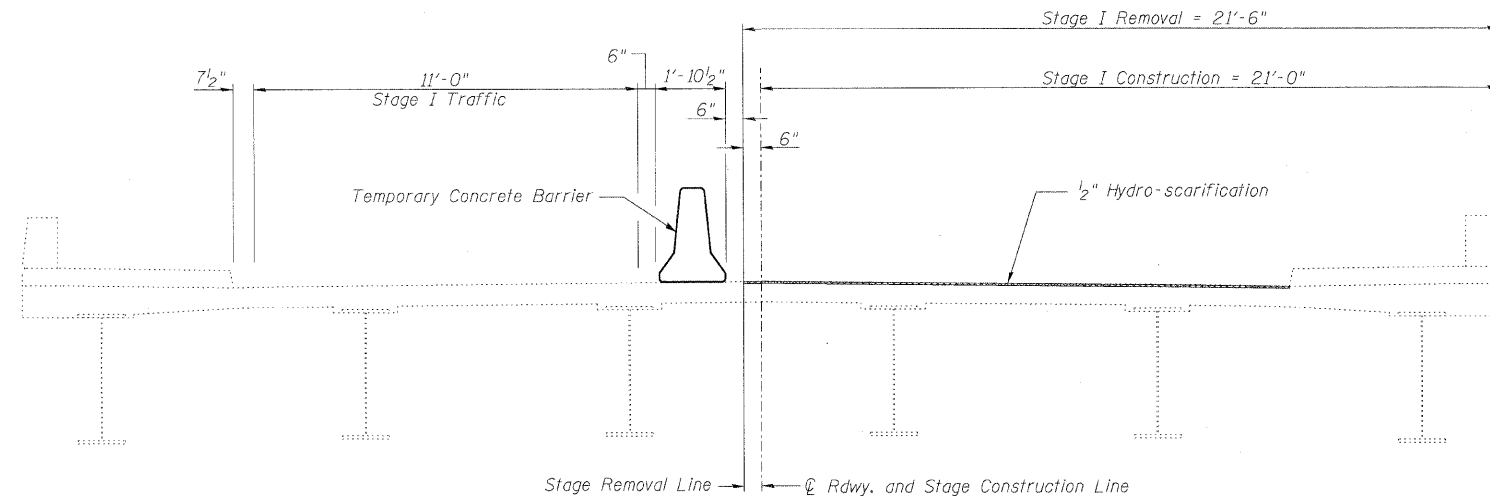
All new structural steel shall be shop painted with the inorganic zinc rich primer per AASHTO M300, Type I. Cost included with Furnishing & Erecting Structural Steel.

All structural steel shall conform to AASHTO Classification M-270 Gr. 36, unless otherwise noted.

Joint openings shall be adjusted according to Article 520.04 of the Standard Specs. when the deck is poured at an ambient temperature other than 50°F.

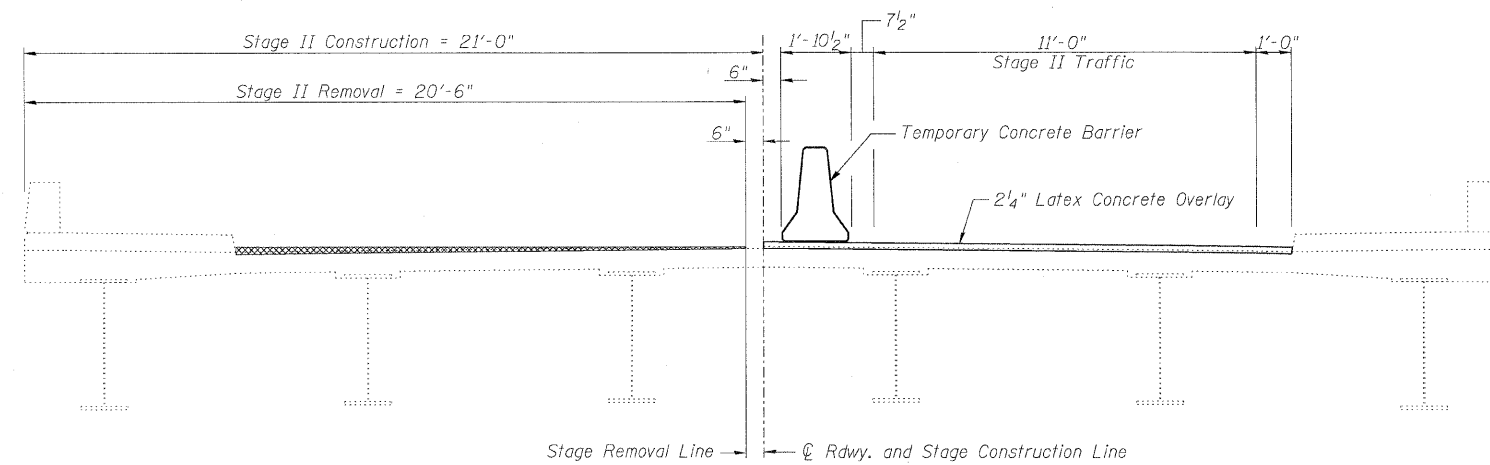
**TOTAL BILL OF MATERIAL**

ITEM	UNIT	SUPER	SUB	TOTAL
Bituminous Materials (Prime Coat)	Gallon	33	-	33
Hot Mix Asphalt Surface Course, Mix "D", NSO, 1 3/4"	Tons	19	-	19
Protective Coat	Sq. Yd.	795	-	795
Hot Mix Asphalt Surface Removal, 1 3/4"	Sq. Yd.	107	-	107
Hot Mix Asphalt Surface Removal (Deck)	Sq. Yd.	760	-	760
Concrete Removal	Cu. Yd.	9.7	-	9.7
Protective Shield (Permanent)	Sq. Yd.	400	-	400
Concrete Superstructure	Cu. Yd.	9.6	-	9.6
Bridge Deck Grooving	Sq. Yd.	726	-	726
Jack and Remove Existing Bearings	Each	-	12	12
Reinforcement Bars, Epoxy Coated	Pound	1,320	-	1,320
Bar Splicers	Each	16	-	16
Preformed Joint Strip Seal	Foot	85	-	85
Elastomeric Bearing Assembly, Type I	Each	-	12	12
Anchor Bolts, 1"	Each	-	24	24
Concrete Sealer	Sq. Ft.	3670	-	3670
Approach Slab Repair (Partial Depth)	Sq. Yd.	8.2	-	8.2
Bridge Deck Hydro-scarification 1/2"	Sq. Yd.	760	-	760
Deck Slab Repair (Full Depth, Type II)	Sq. Yd.	35.8	-	35.8
Bridge Deck Latex Concrete Overlay, 2 1/4"	Sq. Yd.	760	-	760
Structural Repair Concrete (Depth Greater Than 5 in.)	Sq. Ft.	50	61	111
Structural Repair Concrete (Depth Equal To or Less Than 5 in.)	Sq. Ft.	-	88	88
Clean and Reseal Relief Joint	Foot	82	-	82
Furnishing and Erecting Structural Steel	Pound	1990	-	1990



**STAGE I REMOVAL & CONSTRUCTION**

(Looking East)



**STAGE II REMOVAL & CONSTRUCTION**

(Looking East)

**GENERAL NOTES & DETAILS**  
**STRUCTURE NO. 016-1099**

<b>LIN ENGINEERING LTD.</b> Consulting Engineers Chatham, Illinois <small>Designed By: YMK    Checked By: MTH    Drawn By: YMK</small> <small>Date: 12/2010    File: 016-1099.dgn</small>	SHEET NO. 2  10 SHEETS	F.A.I. RTE.	SECTION	COUNTY	TOTAL SHEETS	SHEET NO.
		57	0607-1007 HB-I	COOK	29	9
FED. ROAD DIST. NO. ILLINOIS FED. AID PROJECT					CONTRACT NO. 60J26	