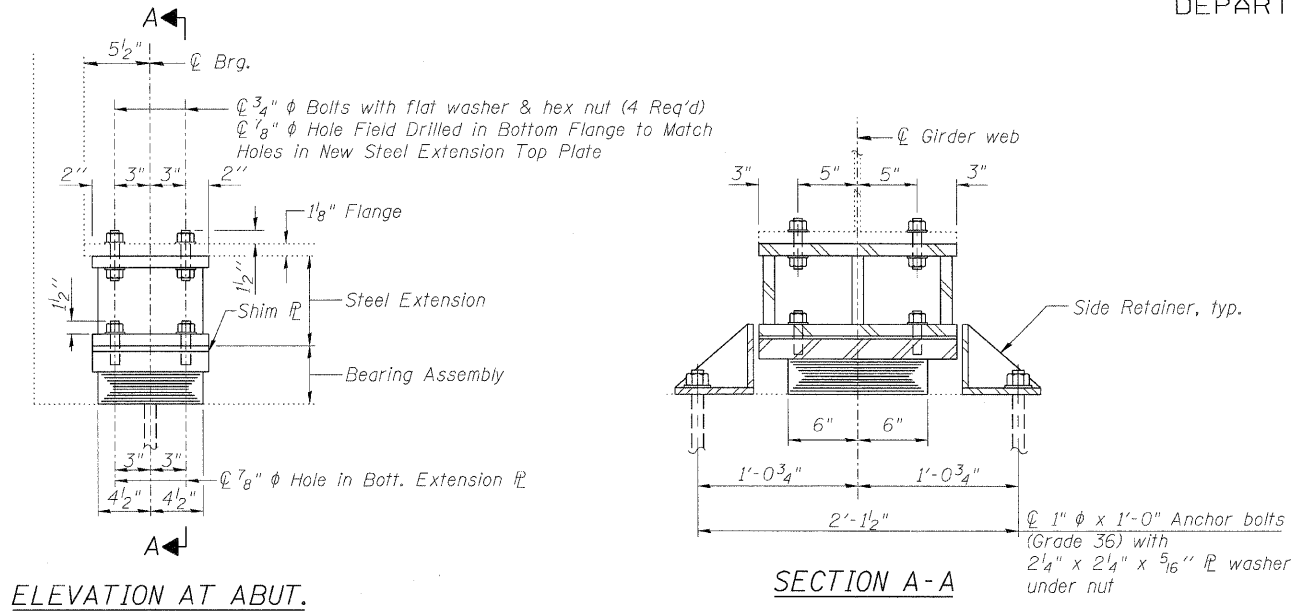


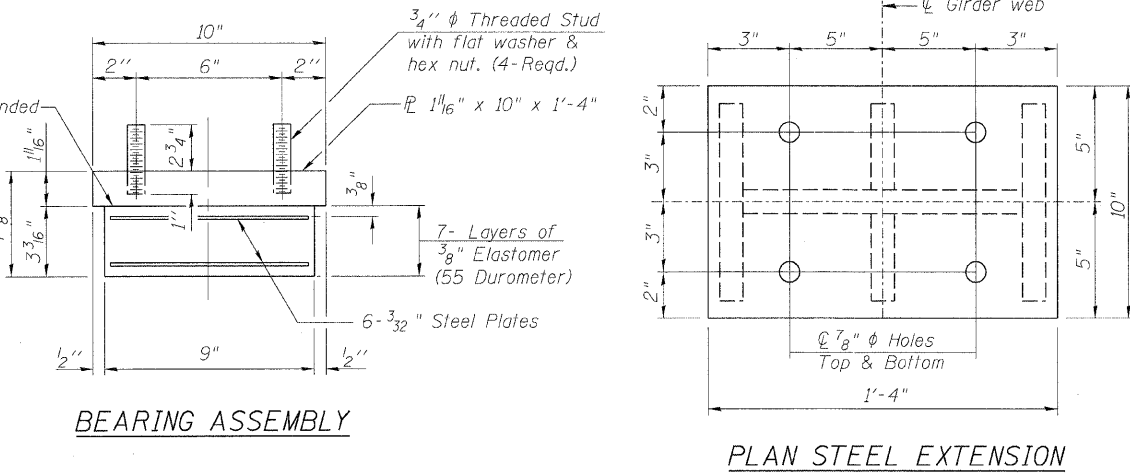
STATE OF ILLINOIS
DEPARTMENT OF TRANSPORTATION



ELEVATION AT ABUT.

SECTION A-A

TYPE I ELASTOMERIC EXP. BRG.



BEARING ASSEMBLY

PLAN STEEL EXTENSION

Note:
Shim plates shall not be placed under Bearing Assembly.

Notes:
Anchor bolts shall be ASTM F1554 all-thread (or an Engineer-approved alternate material) of the grade(s) and diameter(s) specified. ASTM A307 Grade C anchor bolts may be used in lieu of ASTM F1554 Grade 36 (Fy=36ksi). The corresponding specified grade of AASHTO M314 anchor bolts may be used in lieu of ASTM F1554.

Drilled and set anchor bolts shall be installed according to Article 521.06 of the Standard Specifications.

Two 1/8 in. adjusting shims shall be provided for each bearing in addition to all other plates or shims and placed as shown on bearing details.

The Contractor is to verify the existing dimensions prior to fabricating the steel extensions. It is intended to keep the existing beams at their current elevation.

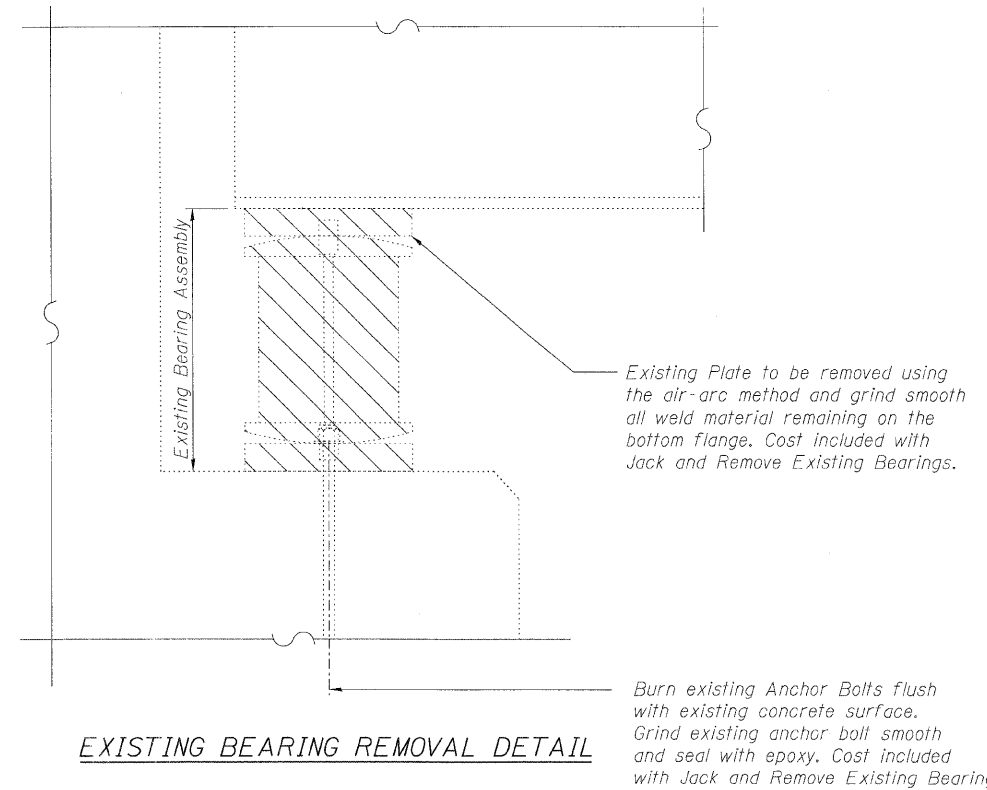
Side retainers, Fasteners and other steel members required for the bearing assembly shall be included in the cost of Elastomeric Bearing Assembly, Type I.

Fasteners shall be AASHTO M164 Type 1, mechanically galvanized bolts.

Cost of steel extensions is included with Furnishing and Erecting Structural Steel

Notes:
Hatch area indicates Bearing removal. See Special Provision for Jack and Remove Existing Bearings. Cribbing shall be designed to resist horizontal and vertical loads at bearing locations.

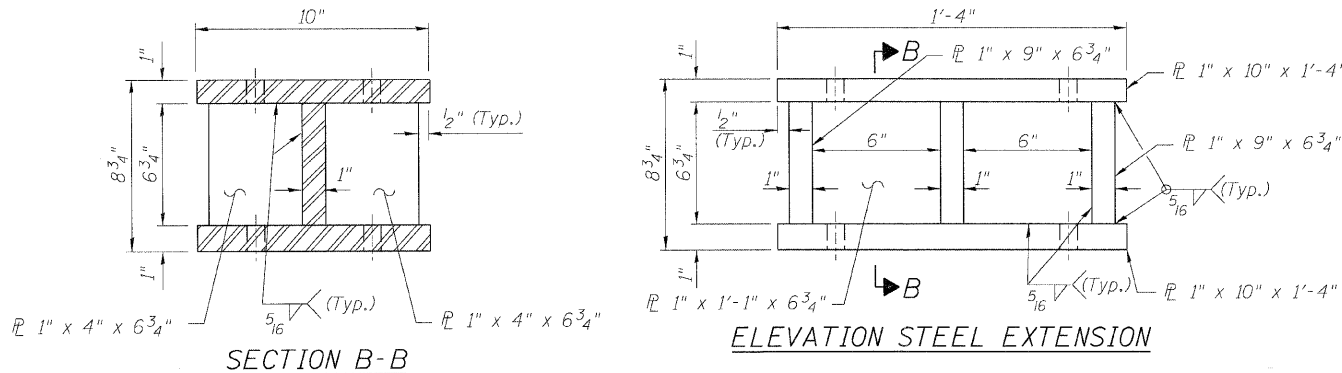
Estimated Max. Dead Load and Live Load plus Impact Beam Reaction (from Existing Plans):
Dead Load = 33 kips/girder
Live Load = 43 kips/girder
Impact = 10 kips/girder
Total = 86 kips/girder
Minimum Jack Capacity = 45 Tons



EXISTING BEARING REMOVAL DETAIL

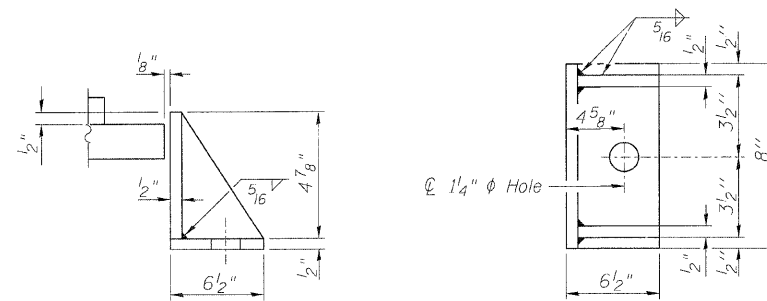
Existing Plate to be removed using the air-arc method and grind smooth all weld material remaining on the bottom flange. Cost included with Jack and Remove Existing Bearings.

Burn existing Anchor Bolts flush with existing concrete surface. Grind existing anchor bolt smooth and seal with epoxy. Cost included with Jack and Remove Existing Bearings.



SECTION B-B

ELEVATION STEEL EXTENSION



SIDE RETAINER

Equivalent rolled angle with stiffeners will be allowed in lieu of welded plates.

BILL OF MATERIAL

Item	Unit	Total
Elastomeric Bearing Assembly Type I	Each	12
Anchor Bolts, 1"	Each	24
Jack and Remove Existing Bearings	Each	12
Furnishing and Erecting Structural Steel	Pound	1990

BEARING DETAILS
STRUCTURE NO. 016-1099

LIN ENGINEERING, LTD. Consulting Engineers Chatham, Illinois	SHEET NO. 7	F.A.I. RTE.	SECTION	COUNTY	TOTAL SHEETS	SHEET NO.
	10 SHEETS	57	0607-1007 HB-I	COOK	29	14
			CONTRACT NO. 60J26			
Designed By: YMK Date: 1/2010		Checked By: MTH File: 016-1099.dgn	FED. ROAD DIST. NO. ILLINOIS FED. AID PROJECT			