

F.A.I. RTE.	SECTION	COUNTY	TOTAL SHEETS	SHEET NO.
94	0101 15-I	COOK	20	1
FED ROAD DIST No. 1 ILLINOIS		CONTRACT No. 60J29		

STATE OF ILLINOIS
DEPARTMENT OF TRANSPORTATION
DIVISION OF HIGHWAYS

PROPOSED
HIGHWAY PLANS

FAI 94 / I-94 (EDENS EXPRESSWAY) AT FOREST PRESERVE
BRIDGE DECK OVERLAY, JOINT REPAIR
SECTION 0101.15-I
PROJECT NO. IM-094-2(245)043
COOK COUNTY
C-91-219-10

FOR INDEX OF SHEETS, SEE SHEET NO. 2

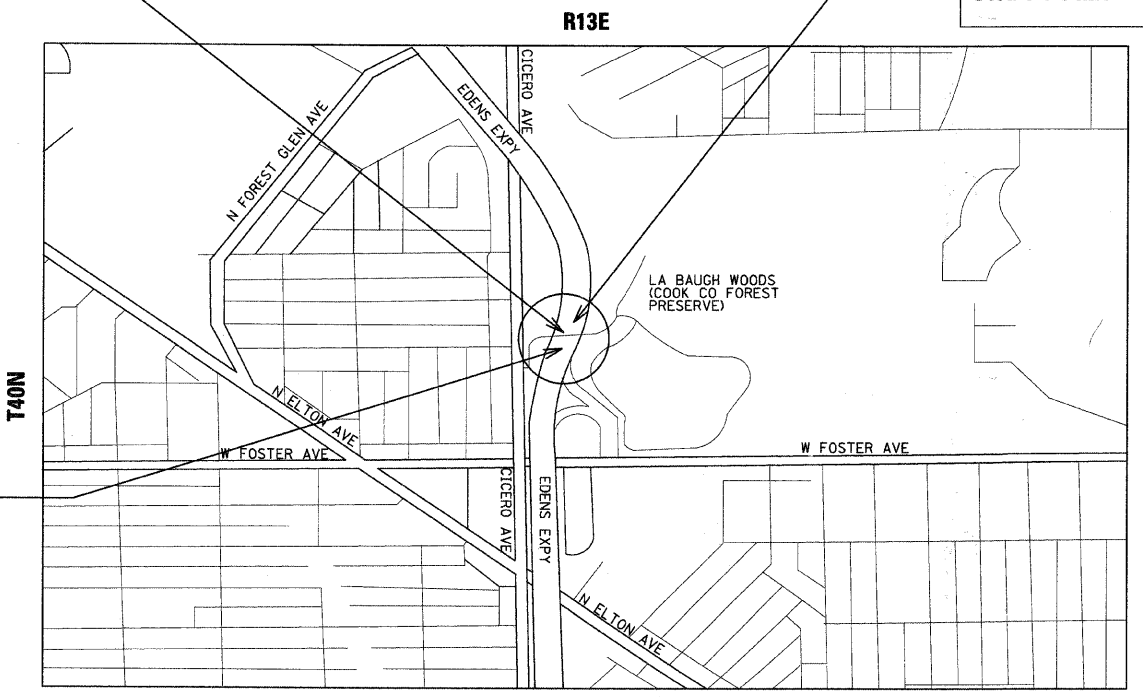
TRAFFIC DATA:
POSTED SPEED = 15 MPH



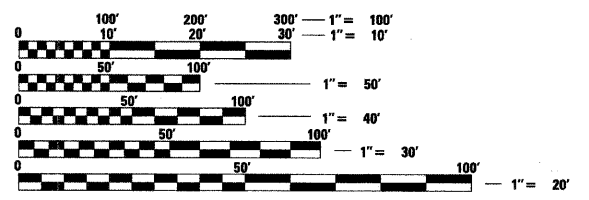
PROJECT LOCATION
I-94 (EDENS EXPRESSWAY)
AT FOREST PRESERVE
STRUCTURE NO. 016-2039

IMPROVEMENT ENDS
STA. 5 + 84.25

IMPROVEMENT BEGINS
STA. 4 + 7.95



PROJECT IS LOCATED IN THE CITY OF CHICAGO



FULL SIZE PLANS HAVE BEEN PREPARED USING STANDARD ENGINEERING SCALES. REDUCED SIZED PLANS WILL NOT CONFORM TO STANDARD SCALES. IN MAKING MEASUREMENTS ON REDUCED PLANS, THE ABOVE SCALES MAY BE USED.

J.U.L.I.E.
 JOINT UTILITY LOCATION INFORMATION FOR EXCAVATION
 1-800-892-0123 OR 811

JEFFERSON TOWNSHIP
LOCATION MAP
 NOT TO SCALE

GROSS LENGTH OF PROJECT = 176.3 FEET = 0.033 MILES
NET LENGTH OF PROJECT = 176.3 FEET = 0.033 MILES

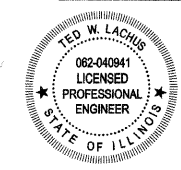
PROJECT MANAGER RAJENDRA SHAH (847) 705-4555
PROJECT ENGINEER MICHELLE AQUINO (847) 705-4606
CONTRACT NO. 60J29

STATE OF ILLINOIS
DEPARTMENT OF TRANSPORTATION
DIVISION OF HIGHWAYS

SUBMITTED JANUARY 22, 2010
Diana M. O'Keefe
 DEPUTY DIRECTOR OF HIGHWAYS, REGION ENGINEER
March 19 2010
Scott E. Stitt, P.E.
 ACTING ENGINEER OF DESIGN AND ENVIRONMENT
March 19 2010
Christine M. Reed
 DIRECTOR OF HIGHWAYS, CHIEF ENGINEER

PRINTED BY THE AUTHORITY OF THE STATE OF ILLINOIS

Primera
 100 S. WACKER DRIVE SUITE 700, CHICAGO IL 60606.
 P:312-606-0910 F:312-606-0415



Ted W. Lachus
TED W. LACHUS, P.E.
 EXPIRES 11-30-2011
 DATE 1-29-2010