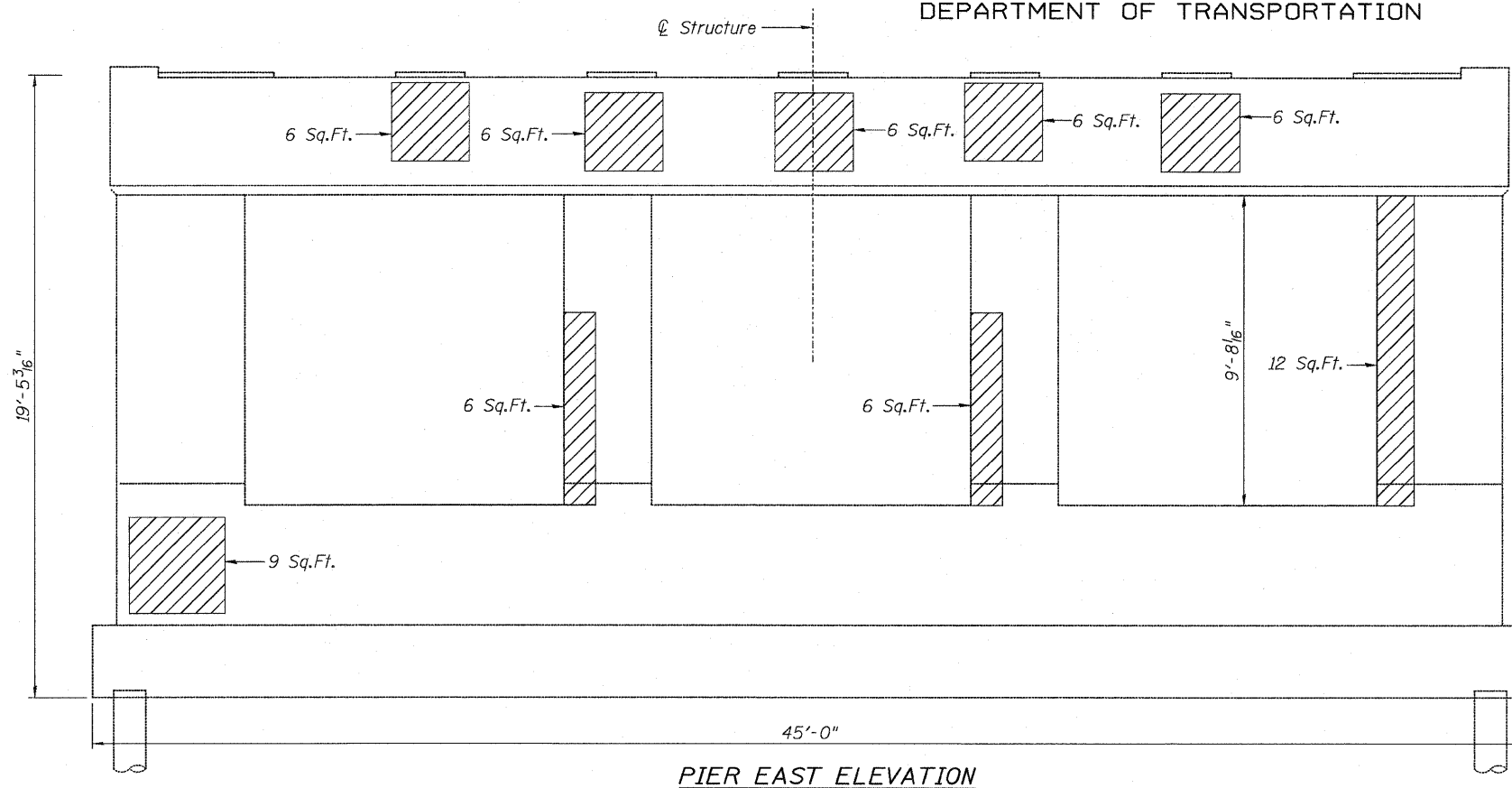
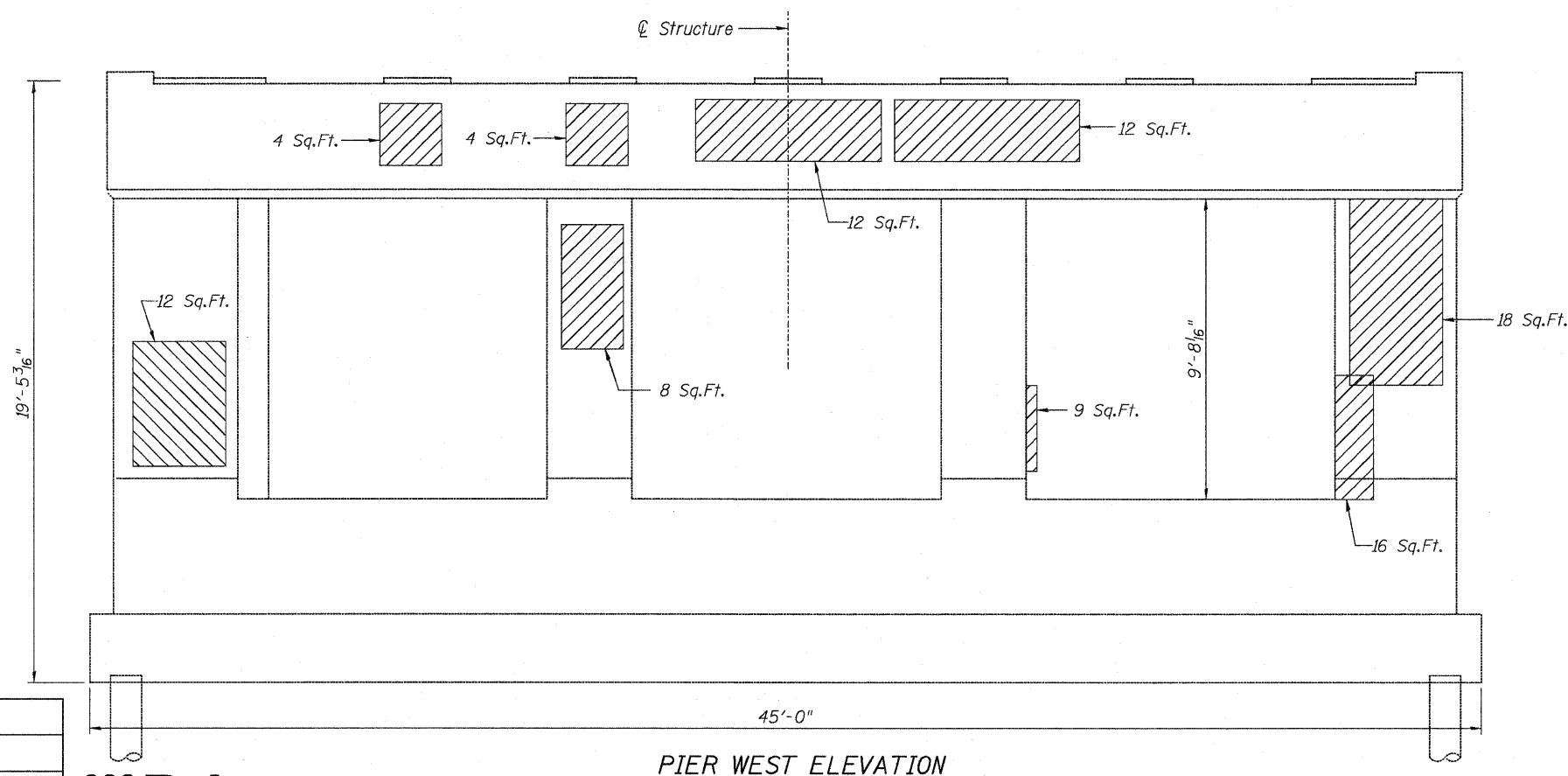


STATE OF ILLINOIS  
DEPARTMENT OF TRANSPORTATION



PIER EAST ELEVATION



PIER WEST ELEVATION

BILL OF MATERIAL

ITEM	UNIT	QUANTITY
Structural Repair of Concrete (Depth equal to or less than 5")	Sq. Ft.	158

LEGEND:

Structural Repair of Concrete  
(Depth equal to or less than 5")

Note:  
Repair of the existing pier shall include  
but may not be limited to the areas shown. The  
actual areas to be repaired will be determined  
by the Engineer at the time of construction.

DESIGNED JPM  
CHECKED TG  
DRAWN MPS  
CHECKED JPM, TG



PIER REPAIR DETAILS  
STRUCTURE NO. 016-2039

SHEET NO. S8	F.A.I RTE.	SECTION	COUNTY	TOTAL SHEETS	SHEET NO.
	94	0101.15-I	COOK	20	15
S9 SHEETS	CONTRACT NO. 60J29			ILLINOIS FED. AID PROJECT	