

F.A.I. RTE.	SECTION	COUNTY	TOTAL SHEETS	SHEET NO.
94	0101 15-I	COOK	20	1
FED ROAD DIST No. 1 ILLINOIS CONTRACT No. 60J29				

**STATE OF ILLINOIS**  
**DEPARTMENT OF TRANSPORTATION**  
**DIVISION OF HIGHWAYS**

**PROPOSED**  
**HIGHWAY PLANS**

**FAI 94 / I-94 (EDENS EXPRESSWAY) AT FOREST PRESERVE**  
**BRIDGE DECK OVERLAY, JOINT REPAIR**  
**SECTION 0101.15-I**  
**PROJECT NO. IM-094-2(245)043**  
**COOK COUNTY**  
**C-91-219-10**

FOR INDEX OF SHEETS, SEE SHEET NO. 2

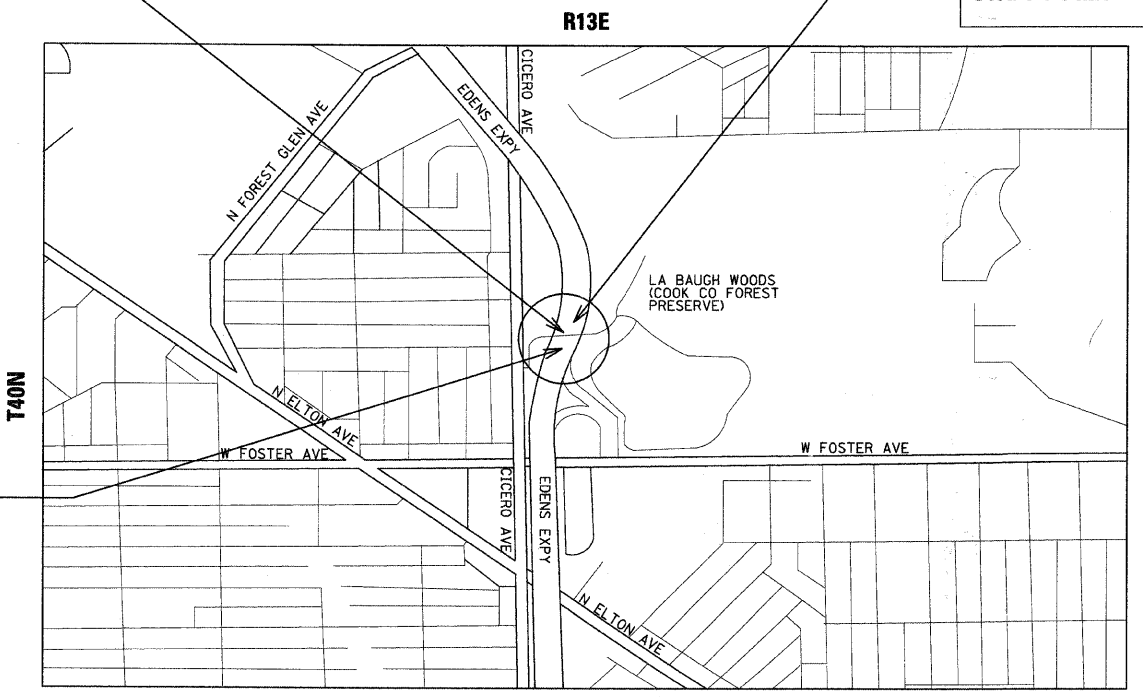
**TRAFFIC DATA:**  
**POSTED SPEED = 15 MPH**



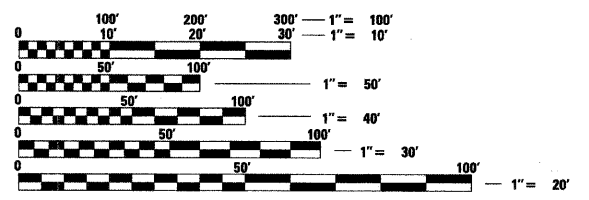
**PROJECT LOCATION**  
**I-94 (EDENS EXPRESSWAY)**  
**AT FOREST PRESERVE**  
**STRUCTURE NO. 016-2039**

**IMPROVEMENT ENDS**  
**STA. 5 + 84.25**

**IMPROVEMENT BEGINS**  
**STA. 4 + 7.95**



**PROJECT IS LOCATED IN THE CITY OF CHICAGO**



FULL SIZE PLANS HAVE BEEN PREPARED USING STANDARD ENGINEERING SCALES. REDUCED SIZED PLANS WILL NOT CONFORM TO STANDARD SCALES. IN MAKING MEASUREMENTS ON REDUCED PLANS, THE ABOVE SCALES MAY BE USED.

**J.U.L.I.E.**  
**JOINT UTILITY LOCATION INFORMATION FOR EXCAVATION**  
**1-800-892-0123 OR 811**

**JEFFERSON TOWNSHIP**  
**LOCATION MAP**  
**NOT TO SCALE**

**GROSS LENGTH OF PROJECT = 176.3 FEET = 0.033 MILES**  
**NET LENGTH OF PROJECT = 176.3 FEET = 0.033 MILES**

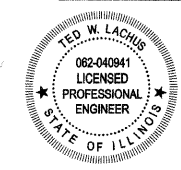
**PROJECT MANAGER RAJENDRA SHAH (847) 705-4555**  
**PROJECT ENGINEER MICHELLE AQUINO (847) 705-4606**  
**CONTRACT NO. 60J29**

**STATE OF ILLINOIS**  
**DEPARTMENT OF TRANSPORTATION**  
**DIVISION OF HIGHWAYS**

SUBMITTED JANUARY 22, 2010  
*Diana M. O'Keefe*  
 DEPUTY DIRECTOR OF HIGHWAYS, REGION ENGINEER  
March 19 2010  
*Scott E. Stitt, P.E.*  
 ACTING ENGINEER OF DESIGN AND ENVIRONMENT  
March 19 2010  
*Christine M. Reed*  
 DIRECTOR OF HIGHWAYS, CHIEF ENGINEER

**PRINTED BY THE AUTHORITY**  
**OF THE STATE OF ILLINOIS**

**Primera**  
 100 S. WACKER DRIVE SUITE 700, CHICAGO IL 60606.  
 P:312-606-0910 F:312-606-0415



*Ted W. Lachus*  
**TED W. LACHUS, P.E.**  
 EXPIRES 11-30-2011  
 DATE 1-29-2010

**INDEX OF SHEETS**

- 1 COVER SHEET
- 2 INDEX OF SHEETS AND GENERAL NOTES
- 3 SUMMARY OF QUANTITIES
- 4 MOT GENERAL NOTES & CONSTRUCTION SEQUENCING
- 5 SUGGESTED STAGE OF CONSTRUCTION, STAGE 1
- 6 SUGGESTED STAGE OF CONSTRUCTION, STAGE 2
- 7 PAVEMENT MARKINGS
- 8 GENERAL PLAN AND ELEVATION
- 9 STAGE CONSTRUCTION DETAILS
- 10 TEMPORARY CONCRETE BARRIER
- 11 BRIDGE DECK PATCHING & HYDRO-SCARIFICATION PLAN
- 12 PROTECTIVE SHIELD PLAN & PPC - BEAM REPAIR DETAIL
- 13 PROTECTIVE SHIELD DETAILS
- 14 ABUTMENTS REPAIR DETAILS
- 15 PIERS REPAIR DETAILS
- 16 TRANSVERSE JOINT RECONSTRUCTION DETAILS
- 17 TC-9 DISTRICT ONE TRAFFIC CONTROL DETAILS FOR FREEWAY SINGLE & MULTI-LANE WEAVE
- 18 TC-10 DISTRICT ONE TRAFFIC CONTROL AND PROTECTION FOR SIDE ROADS, INTERSECTIONS AND DRIVEWAYS
- 19 TC-17 DISTRICT ONE TRAFFIC CONTROL DETAILS FOR FREEWAY SHOULDER CLOSURES AND PARTIAL RAMP CLOSURES
- 20 TC-22 DISTRICT ONE ARTERIAL ROAD INFORMATION SIGN

**STATE STANDARDS**

- 000001-05 STANDARD SYMBOLS, ABBREVIATIONS AND PATTERNS
- 001001-02 AREAS OF REINFORCEMENT BARS
- 001006 DECIMAL OF AN INCH AND OF A FOOT
- 701311-03 LANE CLOSURE 2 LANE 2 WAY MOVING OPERATIONS DAY ONLY
- 701321-10 LANE CLOSURE 2 LANE 2 WAY, BRIDGE REPAIR WITH BARRIER
- 701901-01 TRAFFIC CONTROL DEVICES
- 701400-04 APPROACH TO LANE CLOSURE, FREEWAY / EXPRESSWAY
- 701401-05 LANE CLOSURE, FREEWAY / EXPRESSWAY
- 701406-05 LANE CLOSURE, FREEWAY / EXPRESSWAY DAY OPERATIONS ONLY

**GENERAL NOTES:**

1. THESE PLANS HAVE BEEN PREPARED FROM INFORMATION ACQUIRED FROM EXISTING PLANS AND NOTES RECEIVED FROM IDOT FIELD MAINTENANCE ENGINEERS.
2. PLAN DIMENSIONS AND DETAILS RELATIVE TO EXISTING PLANS ARE SUBJECT TO VARIATIONS FOUND IN THE FIELD. THE CONTRACTOR SHALL FIELD VERIFY EXISTING DIMENSIONS AND DETAILS AFFECTING NEW CONSTRUCTION AND MAKE NECESSARY ADJUSTMENTS PRIOR TO CONSTRUCTION OR ORDERING MATERIALS. ANY ADJUSTMENTS PROPOSED BY THE CONTRACTOR MUST BE APPROVED BY THE ENGINEER. SUCH VARIATIONS SHALL NOT BE CAUSE FOR ADDITIONAL COMPENSATION FOR A CHANGE IN THE SCOPE OF THE WORK, HOWEVER, THE CONTRACTOR WILL BE PAID FOR THE QUANTITY ACTUALLY FURNISHED BASED UPON THE UNIT PRICE.
3. QUANTITIES FOR DECK SLAB REPAIR ARE APPROXIMATE. LOCATIONS WILL BE DETERMINED BY THE ENGINEER FOLLOWING REMOVAL OF THE HMA SURFACE COURSE AND HYDRO-SCARIFICATION. ACTUAL REPAIR LOCATIONS SHALL BE SHOWN ON THE AS-BUILT PLANS.
4. FORTY- EIGHT HOURS BEFORE STARTING EXCAVATION, THE CONTRACTOR WILL CALL J.U.L.I.E. (1-800-892-0123) OR 811 FOR LOCATIONS OF THE EXISTING UTILITIES.
5. THE CONTRACTOR WILL NOT BE ALLOWED TO SET UP A YARD OR FIELD OFFICE ON STATE PROPERTY WITHOUT WRITTEN PERMISSION FROM THE DEPARTMENT.
6. SAW CUTTING PRIOR TO ANY REMOVAL ITEMS NOTED ON THE PLANS OR DIRECTED BY THE ENGINEER SHALL BE CONSIDERED INCLUDED IN THE COST OF THE ITEMS BEING REMOVED.
7. DO NOT SCALE PLANS FOR CONSTRUCTION DIMENSIONS.
8. THE CONTRACTOR SHALL USE CARE IN REMOVING OR EXCAVATING NEAR ALL EXISTING ITEMS WHICH WILL REMAIN. ANY DAMAGE DONE TO EXISTING ITEMS BY THE CONTRACTOR SHALL BE REPAIRED AT THE CONTRACTOR'S EXPENSE.
9. WHEN ARTIFICIAL LIGHTING IS UTILIZED IN NIGHT OPERATIONS, THE CONTRACTOR SHALL EXERCISE THE UTMOST PRECAUTIONS IN PREVENTING ADVERSE VISIBILITY TO THE MOTORING PUBLIC AS WELL AS ADJOINING RESIDENTIAL AREAS.
10. THE CONTRACTOR SHALL OBTAIN ALL NECESSARY PERMITS, AS REQUIRED, PRIOR TO COMMENCING WITH CONSTRUCTION.
11. THE CONTRACTOR SHALL TAKE ALL NECESSARY MEASURES TO ASSURE THAT NO DEBRIS FALLS INTO THE WATERWAY. THE COST OF THIS WORK SHALL BE INCLUDED IN THE VARIOUS PAY ITEMS.
12. THE CONTRACTOR SHALL CONTACT THE TRAFFIC CONTROL SUPERVISOR AT (847) 705-4470 A MINIMUM OF 72 HOURS PRIOR TO THE PLACEMENT OF ANY TEMPORARY TRAFFIC CONTROL DEVICES.
13. ~~THE CONTRACTOR SHALL CONTACT WALTER CZARNY, THE AREA TRAFFIC FIELD ENGINEER, AT (773)-685-4342 TWO (2) WEEKS PRIOR TO THE PLACEMENT OF PERMANENT PAVEMENT MARKINGS.~~
14. ALL DAMAGE TO EXISTING PAVEMENT MARKINGS OUTSIDE THE PROPOSED IMPROVEMENTS SHOWN ON THE PLANS SHALL BE REPLACED AT THE CONTRACTOR'S EXPENSE.
15. ALL RAISED REFLECTIVE PAVEMENT MARKERS (BRIDGE) SHALL BE LOW PROFILE.
16. ACCESS SHALL BE PROVIDED AT ALL TIMES TO PROPERTIES ABUTTING THE PROPOSED IMPROVEMENT.

**COMMITMENTS**

NONE

HOT-MIX ASPHALT MIXTURE REQUIREMENTS	
MIXTURE TYPE	AIR VOIDS
SURFACE COURSE	
HOT-MIX ASPHALT SURFACE COURSE, MIX "C", N50	4% @ 50 Gyr.

THE UNIT WEIGHT USED TO CALCULATE ALL HMA SURFACE MIXTURE QUANTITIES IS 112 LBS/SQ YD/IN.

The "AC Type" for Polymerized HMA Mixes SHALL BE "SBS/SBR PG 70 -22" AND FOR NON-POLYMERIZED HMA THE "AC TYPE" shall be "PG 64 -22" UNLESS modified by District ONE Special Provisions. FOR "PERCENT OF RAP" SEE DISTRICT ONE SPECIAL PROVISIONS.

Note: For proposed section see sheet number S4.

SUMMARY OF QUANTITIES				URBAN 90% FED. 10% STATE	CONSTRUCTION TYPE CODE
CODE NO.	ITEM DESCRIPTION	UNIT	TOTAL QUANTITY	010-2039 SFTY-2A QUANTITY	
40603310	HOT-MIX ASPHALT SURFACE COURSE, MIX "C", N50	TON	14	14	
42001300	PROTECTIVE COAT	SQ YD	397	397	
44000157	HOT-MIX ASPHALT SURFACE REMOVAL, 2"	SQ YD	115	115	
44000915	HOT-MIX ASPHALT SURFACE REMOVAL (DECK)	SQ YD	368	368	
50157301	PROTECTIVE SHIELD (PERMANENT)	SQ YD	514	514	
50300260	BRIDGE DECK GROOVING	SQ YD	368	368	
59000200	EPOXY CRACK INJECTION	FOOT	24	24	
67000400	ENGINEER'S FIELD OFFICE, TYPE A	CAL MO	3	3	
67100100	MOBILIZATION	L SUM	1	1	
70101800	TRAFFIC CONTROL AND PROTECTION, (SPECIAL)	L SUM	1	1	
70106800	CHANGEABLE MESSAGE SIGN	CAL MO	10	10	
70301000	WORK ZONE PAVEMENT MARKING REMOVAL	SQ FT	623	623	
70400100	TEMPORARY CONCRETE BARRIER	FOOT	200	200	
70400200	RELOCATE TEMPORARY CONCRETE BARRIER	FOOT	200	200	
* 78000200	THERMOPLASTIC PAVEMENT MARKING - LINE 4"	FOOT	422	422	
* 78006110	PREFORMED THERMOPLASTIC PAVEMENT MARKING - LINE 4"	FOOT	129	129	

SUMMARY OF QUANTITIES				URBAN 90% FED. 10% STATE	CONSTRUCTION TYPE CODE
CODE NO.	ITEM DESCRIPTION	UNIT	TOTAL QUANTITY	010-2039 SFTY-2A QUANTITY	
78300100	PAVEMENT MARKING REMOVAL	SQ FT	184	184	
X0320887	POLYMER CONCRETE	CU FT	7	7	
X0322489	BRIDGE DECK LATEX CONCRETE OVERLAY, 2 1/2 INCHES	SQ YD	368	368	
X0322256	TEMPORARY INFORMATION SIGNING	SQ FT	51	51	
<del>X0322276</del>	<del>CLEANING AND PAINTING EXPOSED REBAR</del>	<del>L SUM</del>	<del>1</del>	<del>1</del>	
X0323076	SILICONE JOINT SEALER, 1 3/4"	FOOT	127	127	
X0325305	STRUCTURAL REPAIR OF CONCRETE (DEPTH EQUAL TO OR LESS THAN 5 INCHES)	SQ FT	259	259	
X0325775	WET REFLECTIVE TEMPORARY TAPE, TYPE III, 4 INCH	FOOT	1580	1580	
X0325841	WET REFLECTIVE TEMPORARY TAPE, TYPE III, 24 INCH	FOOT	48	48	
X7011015	TRAFFIC CONTROL AND PROTECTION (EXPRESSWAYS)	L SUM	1	1	
X7013820	TRAFFIC CONTROL SURVEILLANCE, EXPRESSWAYS	CAL DA	20	20	
X8900005	TEMPORARY BRIDGE TRAFFIC SIGNAL INSTALLATION	EACH	1	1	
Z0006204	BRIDGE DECK HYDRO-SCARIFICATION 1/2"	SQ YD	368	368	
Z0016002	DECK SLAB REPAIR (FULL DEPTH TYPE II)	SQ YD	5	5	
Z0030260	IMPACT ATTENUATORS, TEMPORARY (FULLY REDIRECTIVE, NARROW), TEST LEVEL 3	EACH	2	2	
Z0030330	IMPACT ATTENUATORS, RELOCATE (FULLY REDIRECTIVE), TEST LEVEL 3	EACH	2	2	

\* Specialty Items

**MAINTENANCE OF TRAFFIC GENERAL NOTES**

1. THE MAINTENANCE OF TRAFFIC CONTROL (MOT) PLANS SHALL SERVE AS A GUIDE FOR SAFE DIVERSION OF TRAFFIC DURING EXECUTION OF THIS CONTRACT. HOWEVER, THE CONTRACTOR MAY MODIFY THE MOT PLANS TO MEET CONSTRUCTION NEEDS BUT NOT AT THE EXPENSE OF PUBLIC SAFETY OR CONVENIENCE. ANY CHANGES TO THE MOT PLANS SHALL BE SUBMITTED TO THE ENGINEER FOR APPROVAL.
2. THE ENGINEER SHALL BE INFORMED 48 HOURS IN ADVANCE OF ANY CHANGE TO THE MOT PLANS.
3. ALL EXISTING PAVEMENT MARKING IN CONFLICT WITH THE MAINTENANCE OF TRAFFIC STRIPING SHALL BE REMOVED. THIS WORK WILL BE PAID FOR AT THE CONTRACT UNIT PRICE PER SQUARE FOOT, "PAVEMENT MARKING REMOVAL".
4. THE CONTRACTOR SHALL REMOVE ALL TEMPORARY PAVEMENT MARKING TAPE WHICH CONFLICT WITH THE NEXT STAGE OR FINAL STRIPING. REMOVAL OF TEMPORARY PAVEMENT MARKING TAPE WILL BE PAID FOR AT THE CONTRACT UNIT PRICE PER SQUARE FOOT, "WORK ZONE PAVEMENT MARKING REMOVAL".
5. ALL TRAFFIC CONTROL DEVICES USED FOR THE MAINTENANCE OF TRAFFIC, AS DETAILED ON THE PLANS, OR HIGHWAY STANDARD SHALL BE REFLECTORIZED PRIOR TO INSTALLATION AND CLEANED AS SPECIFIED IN MAINTENANCE OF TRAFFIC SPECIAL PROVISIONS OR AS DIRECTED BY THE ENGINEER.
6. ALL DRUMS, VERTICAL PANELS AND BARRICADES ADJACENT TO THE EDGE OF TRAVELED WAY SHALL BE EQUIPPED WITH STEADY-BURNING LIGHTS.
7. ALL EXISTING SIGNS WITHIN THE LIMITS OF MAINTENANCE OF TRAFFIC WHICH ARE OBSCURED BY OR OTHERWISE INTERFERED WITH BY THE CONSTRUCTION OPERATIONS AND MAINTENANCE OF TRAFFIC, SHALL BE COVERED OR REMOVED BY THE CONTRACTOR UNLESS SPECIFIED IN THE PLANS OR WHEN DIRECTED BY THE ENGINEER. THIS WORK SHALL BE IN ACCORDANCE WITH ARTICLE 107.25 OF THE IDOT STANDARD SPECIFICATIONS.
8. TEMPORARY, OFF-PEAK HOUR LANE CLOSURES MUST BE REQUESTED THROUGH THE ENGINEER AND AS SPECIFIED IN THE SPECIAL PROVISIONS, WHEN OFF-PEAK HOUR OR WEEKEND LANE CLOSURES ARE REQUIRED, A PORTABLE CHANGEABLE MESSAGE SIGN SHALL BE INSTALLED ONE WEEK PRIOR TO THE CLOSURE. THE MESSAGE SIGN WORDING AND LOCATION WILL BE DETERMINED BY THE ENGINEER.
9. THE CONTRACTOR SHALL PLACE A CHANGEABLE MESSAGE SIGN AT EACH END OF THE PROJECT AND/OR AS DIRECTED BY THE ENGINEER TO INFORM MOTORISTS OF UPCOMING CONSTRUCTION ACTIVITIES. THE MESSAGE SIGNS WITH THE APPROPRIATE INFORMATION SHALL BE IN PLACED TWO WEEKS BEFORE START OF CONSTRUCTION ACTIVITY. THIS WORK IS TO BE PAID FOR AT THE CONTRACT UNIT PRICE PER CALENDAR MONTH, "CHANGEABLE MESSAGE SIGN".
10. ALL TEMPORARY INFORMATION SIGNS SHALL BE PAID FOR SEPARATELY AT THE CONTRACT UNIT PRICE PER SQUARE FOOT FOR "TEMPORARY INFORMATION SIGNING".
11. FOR ADDITIONAL BRIDGE CONSTRUCTION STAGING INFORMATION, SEE STRUCTURAL PLANS.

**SUGGESTED CONSTRUCTION SEQUENCING**

PRESTAGE

CONSTRUCTION:  
INSTALL TEMPORARY TRAFFIC SIGNAL PER PLAN. IMPLEMENT STAGE 1 MOT PAVEMENT MARKING

MAINTENANCE OF TRAFFIC:  
UTILIZE STANDARDS 701321-10, 701311-03 AND 701501-05

STAGE 1

CONSTRUCTION:  
EASTBOUND LANES: REMOVE HMA OVERLAY AND WATER PROOFING MEMBRANE, HYDROSCARIFY CONCRETE SLAB SURFACE, PERFORM DECK REPAIRS, PLACE LATEX CONCRETE OVERLAY, PERFORM SUBSTRUCTURE REPAIRS AND INSTALL PERMANENT PROTECTIVE SHIELD.

MAINTENANCE OF TRAFFIC:  
UTILIZE MAINTENANCE OF TRAFFIC DETAILS IN THE PLANS AND STANDARDS 701321-10, 701400-04, 701401-5 AND 701406-5.

STAGE 2


CONSTRUCTION:  
WESTBOUND LANES: REMOVE BITUMINOUS OVERLAY AND WATER PROOFING MEMBRANE, HYDROSCARIFY CONCRETE SLAB SURFACE, PERFORM DECK REPAIRS, PLACE LATEX CONCRETE OVERLAY, PERFORM SUBSTRUCTURE REPAIRS AND INSTALL PERMANENT PROTECTIVE SHIELD.

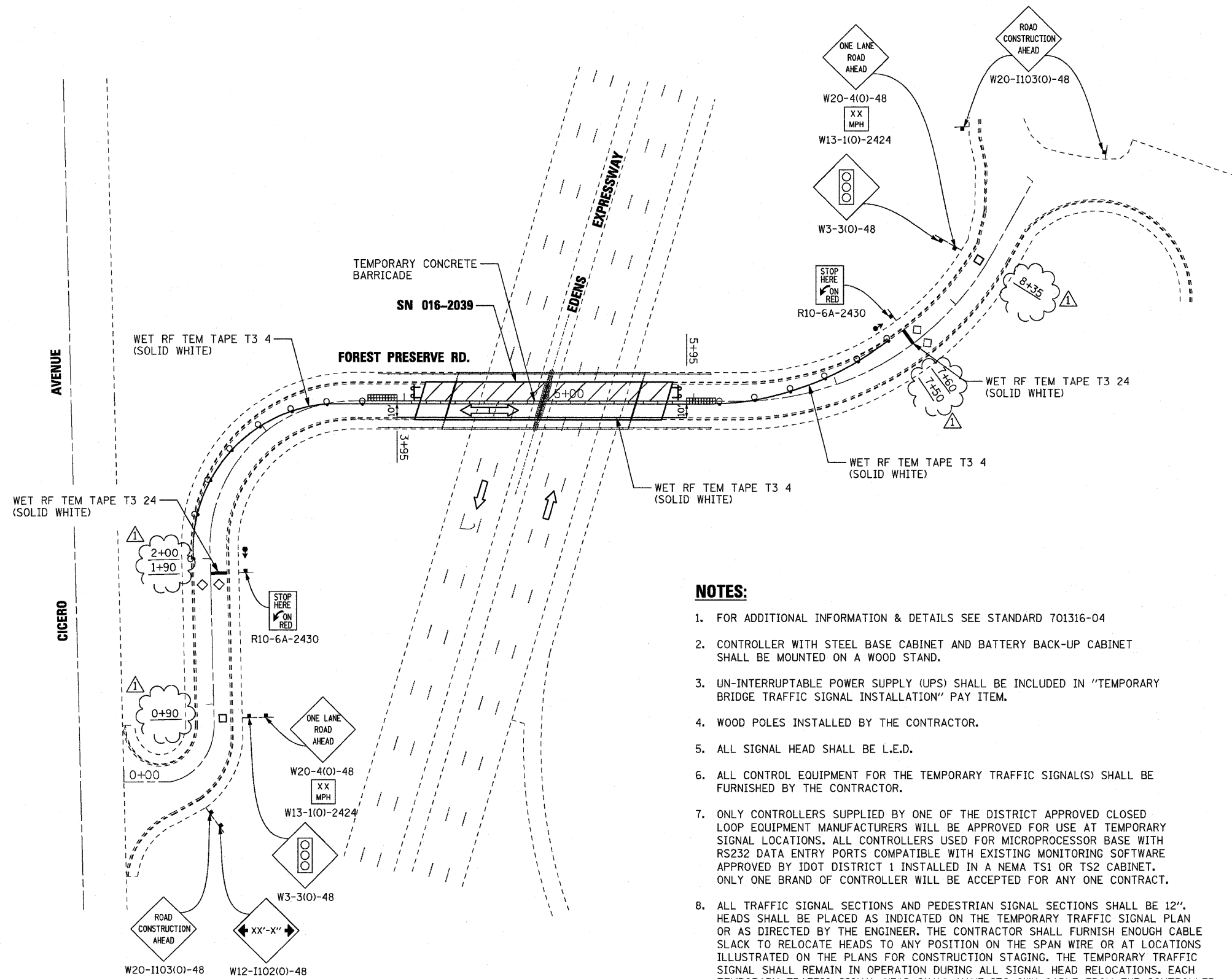
MAINTENANCE OF TRAFFIC:  
UTILIZING MAINTENANCE OF TRAFFIC DETAILS IN THE PLANS AND STANDARDS 701321-10, 701400-04, 701401-5 AND 701406-5.

STAGE 3

CONSTRUCTION:  
PLACE FINAL PAVEMENT MARKINGS.

MAINTENANCE OF TRAFFIC:  
UTILIZE STANDARD 701311-03

FILE NAME = #FILEL#		DESIGNED - TWL	REVISED -	<b>STATE OF ILLINOIS DEPARTMENT OF TRANSPORTATION</b>	<b>MOT GENERAL NOTES AND SUGGESTED CONSTRUCTION SEQUENCING</b>				F.A.I. RTE.	SECTION	COUNTY	TOTAL SHEETS	SHEET NO.
		DRAWN - JLS	REVISED -						94	0101 15-1	COOK	20	4
CHECKED - SF	REVISED -					CONTRACT NO. 60J29							
DATE - 1/29/2010	REVISED -	SCALE:	SHEET NO.		OF	SHEETS	STA.	TO STA.	ILLINOIS FED. AID PROJECT				



**NOTES:**

1. FOR ADDITIONAL INFORMATION & DETAILS SEE STANDARD 701316-04
2. CONTROLLER WITH STEEL BASE CABINET AND BATTERY BACK-UP CABINET SHALL BE MOUNTED ON A WOOD STAND.
3. UN-INTERRUPTABLE POWER SUPPLY (UPS) SHALL BE INCLUDED IN "TEMPORARY BRIDGE TRAFFIC SIGNAL INSTALLATION" PAY ITEM.
4. WOOD POLES INSTALLED BY THE CONTRACTOR.
5. ALL SIGNAL HEAD SHALL BE L.E.D.
6. ALL CONTROL EQUIPMENT FOR THE TEMPORARY TRAFFIC SIGNAL(S) SHALL BE FURNISHED BY THE CONTRACTOR.
7. ONLY CONTROLLERS SUPPLIED BY ONE OF THE DISTRICT APPROVED CLOSED LOOP EQUIPMENT MANUFACTURERS WILL BE APPROVED FOR USE AT TEMPORARY SIGNAL LOCATIONS. ALL CONTROLLERS USED FOR MICROPROCESSOR BASE WITH RS232 DATA ENTRY PORTS COMPATIBLE WITH EXISTING MONITORING SOFTWARE APPROVED BY IDOT DISTRICT 1 INSTALLED IN A NEMA TS1 OR TS2 CABINET. ONLY ONE BRAND OF CONTROLLER WILL BE ACCEPTED FOR ANY ONE CONTRACT.
8. ALL TRAFFIC SIGNAL SECTIONS AND PEDESTRIAN SIGNAL SECTIONS SHALL BE 12". HEADS SHALL BE PLACED AS INDICATED ON THE TEMPORARY TRAFFIC SIGNAL PLAN OR AS DIRECTED BY THE ENGINEER. THE CONTRACTOR SHALL FURNISH ENOUGH CABLE SLACK TO RELOCATE HEADS TO ANY POSITION ON THE SPAN WIRE OR AT LOCATIONS ILLUSTRATED ON THE PLANS FOR CONSTRUCTION STAGING. THE TEMPORARY TRAFFIC SIGNAL SHALL REMAIN IN OPERATION DURING ALL SIGNAL HEAD RELOCATIONS. EACH TEMPORARY TRAFFIC SIGNAL HEAD SHALL HAVE ITS OWN CABLE FROM THE CONTROLLER CABINET TO THE SIGNAL HEAD.
9. 24" WHITE STOP BAR MUST BE IN PLACE AT THE TIME OF SIGNAL TURN ON.

**LEGEND:**

- WORK AREA
- TEMPORARY CONCRETE BARRIER
- ARROW BOARD
- SIGN
- TYPE II BARRICADE OR DRUM WITH STEADY BURNING LIGHTS @ 50 FT CENTERS ALONG ROADWAY (TANGENT) AND 25 FT CENTERS ALONG TAPERS
- TYPE III BARRICADE WITH FLASHING LIGHTS
- IMPACT ATTENUATOR, TEMPORARY (FULLY REDIRECTIVE, NARROW) TEST LEVEL 3
- DIRECTION OF TRAFFIC
- TRAFFIC SIGNAL
- DETECTOR LOOPS

ADDENDUM NO. 1 - 3/26/2010

FILE NAME =  
#FILEL\*



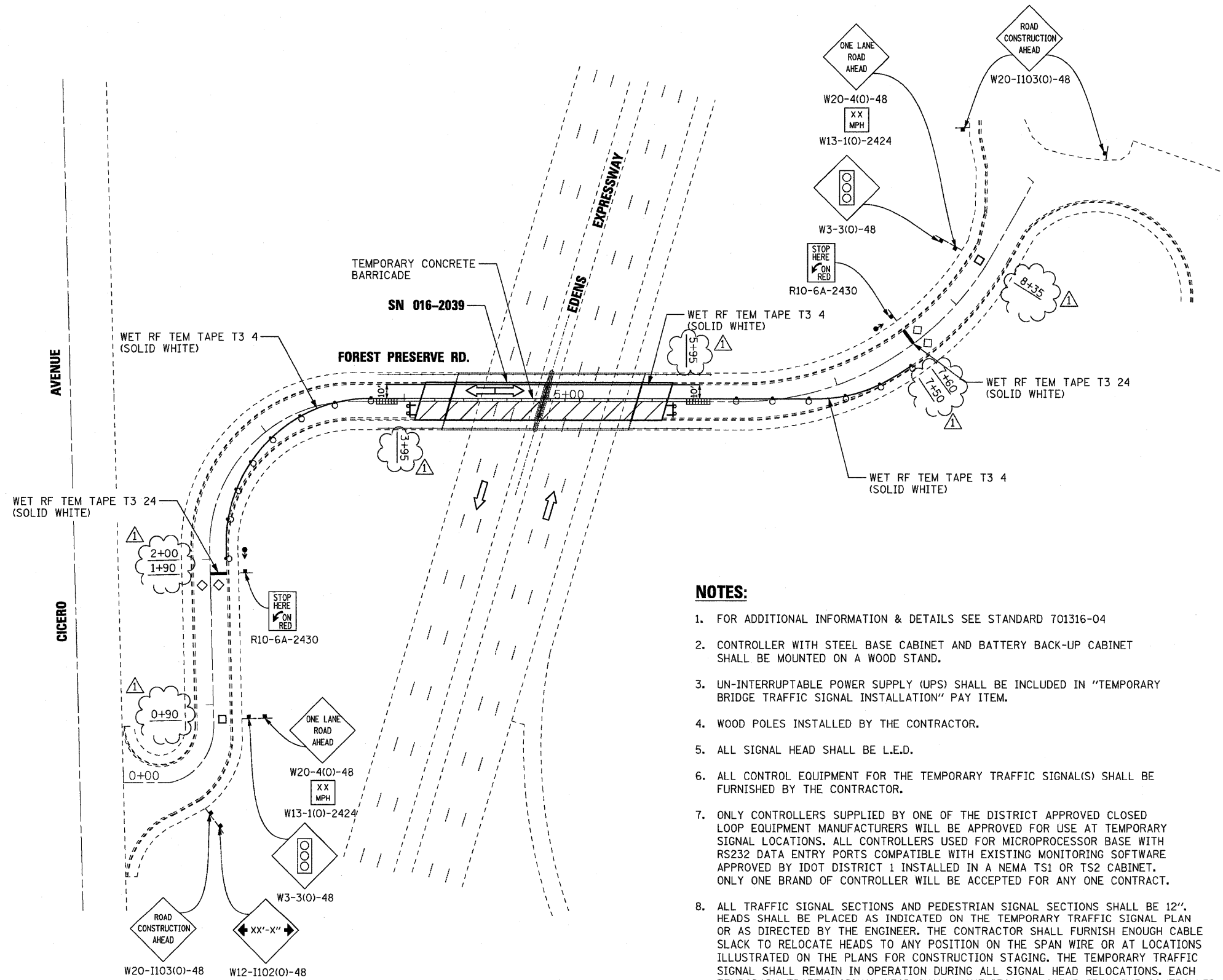
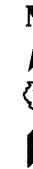
DESIGNED - TWL	REVISED -
DRAWN - JLS	REVISED -
CHECKED - SF	REVISED -
DATE - 1/29/2010	REVISED -

STATE OF ILLINOIS  
DEPARTMENT OF TRANSPORTATION

SUGGESTED STAGE OF CONSTRUCTION & TRAFFIC CONTROL  
STAGE 1  
FOREST PRESERVE ROAD

SCALE: 1" = 40' SHEET NO. OF SHEETS STA. TO STA.

F.A.I. RTE.	SECTION	COUNTY	TOTAL SHEETS	SHEET NO.
94	0101 15-1	COOK	20	5
				CONTRACT NO. 60J29
ILLINOIS FED. AID PROJECT				



**NOTES:**

1. FOR ADDITIONAL INFORMATION & DETAILS SEE STANDARD 701316-04
2. CONTROLLER WITH STEEL BASE CABINET AND BATTERY BACK-UP CABINET SHALL BE MOUNTED ON A WOOD STAND.
3. UN-INTERRUPTABLE POWER SUPPLY (UPS) SHALL BE INCLUDED IN "TEMPORARY BRIDGE TRAFFIC SIGNAL INSTALLATION" PAY ITEM.
4. WOOD POLES INSTALLED BY THE CONTRACTOR.
5. ALL SIGNAL HEAD SHALL BE L.E.D.
6. ALL CONTROL EQUIPMENT FOR THE TEMPORARY TRAFFIC SIGNAL(S) SHALL BE FURNISHED BY THE CONTRACTOR.
7. ONLY CONTROLLERS SUPPLIED BY ONE OF THE DISTRICT APPROVED CLOSED LOOP EQUIPMENT MANUFACTURERS WILL BE APPROVED FOR USE AT TEMPORARY SIGNAL LOCATIONS. ALL CONTROLLERS USED FOR MICROPROCESSOR BASE WITH RS232 DATA ENTRY PORTS COMPATIBLE WITH EXISTING MONITORING SOFTWARE APPROVED BY IDOT DISTRICT 1 INSTALLED IN A NEMA TS1 OR TS2 CABINET. ONLY ONE BRAND OF CONTROLLER WILL BE ACCEPTED FOR ANY ONE CONTRACT.
8. ALL TRAFFIC SIGNAL SECTIONS AND PEDESTRIAN SIGNAL SECTIONS SHALL BE 12". HEADS SHALL BE PLACED AS INDICATED ON THE TEMPORARY TRAFFIC SIGNAL PLAN OR AS DIRECTED BY THE ENGINEER. THE CONTRACTOR SHALL FURNISH ENOUGH CABLE SLACK TO RELOCATE HEADS TO ANY POSITION ON THE SPAN WIRE OR AT LOCATIONS ILLUSTRATED ON THE PLANS FOR CONSTRUCTION STAGING. THE TEMPORARY TRAFFIC SIGNAL SHALL REMAIN IN OPERATION DURING ALL SIGNAL HEAD RELOCATIONS. EACH TEMPORARY TRAFFIC SIGNAL HEAD SHALL HAVE ITS OWN CABLE FROM THE CONTROLLER CABINET TO THE SIGNAL HEAD.
9. 24" WHITE STOP BAR MUST BE IN PLACE AT THE TIME OF SIGNAL TURN ON.

**LEGEND:**

- WORK AREA
- TEMPORARY CONCRETE BARRIER
- ARROW BOARD
- SIGN
- TYPE II BARRICADE OR DRUM WITH STEADY BURNING LIGHTS @ 50 FT CENTERS ALONG ROADWAY (TANGENT) AND 25 FT CENTERS ALONG TAPERS
- TYPE III BARRICADE WITH FLASHING LIGHTS
- IMPACT ATTENUATOR, TEMPORARY (FULLY REDIRECTIVE, NARROW) TEST LEVEL 3
- DIRECTION OF TRAFFIC
- TRAFFIC SIGNAL
- DETECTOR LOOPS

ADDENDUM NO. 1 - 3/26/2010

FILE NAME =  
\*FILEL\*



DESIGNED - TWL  
DRAWN - JLS  
CHECKED - SF  
DATE - 1/29/2010

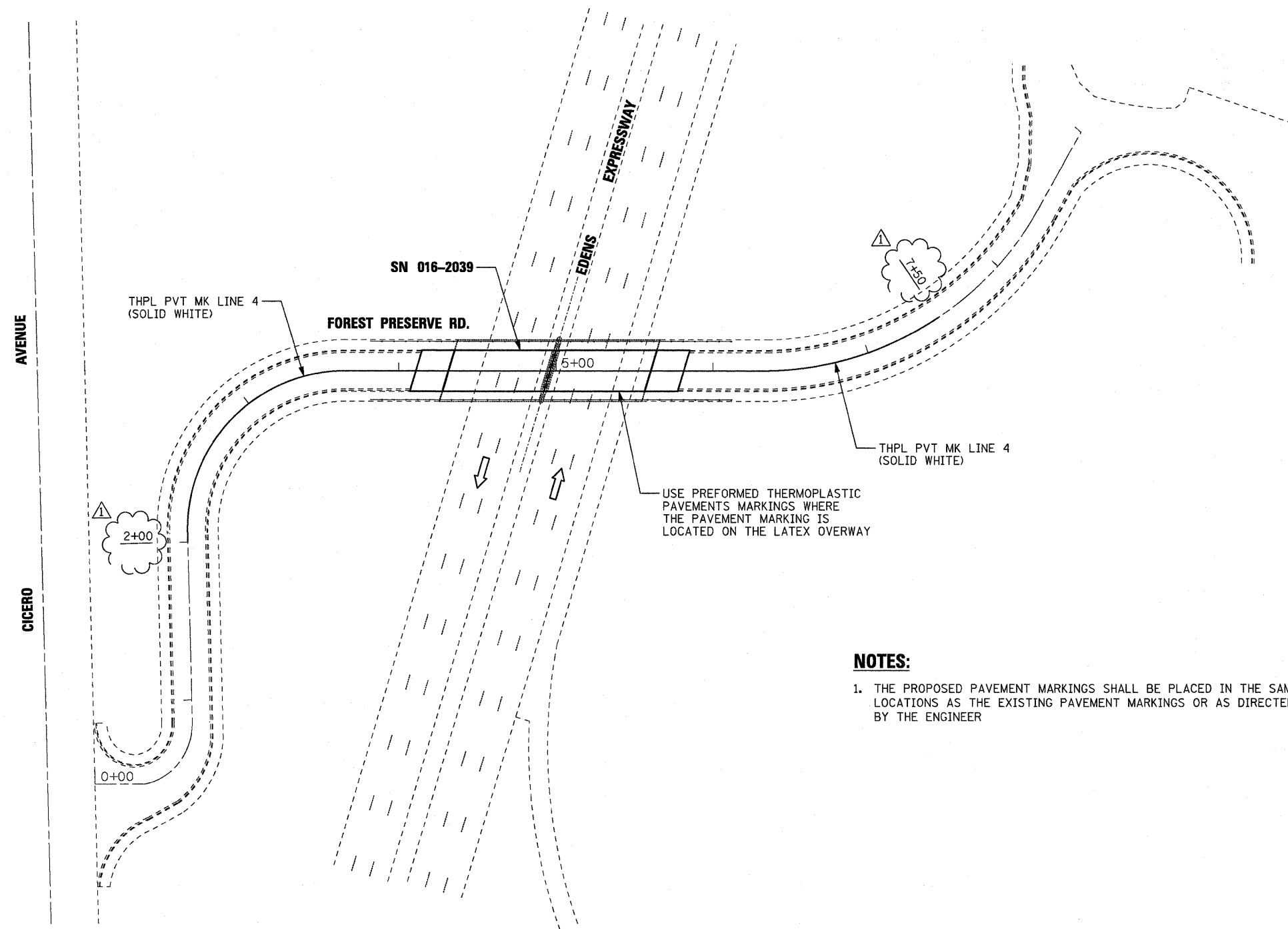
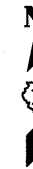
REVISED -  
REVISED -  
REVISED -  
REVISED -

STATE OF ILLINOIS  
DEPARTMENT OF TRANSPORTATION

SUGGESTED STAGE OF CONSTRUCTION & TRAFFIC CONTROL  
STAGE 2  
FOREST PRESERVE ROAD

SCALE: 1" = 40' SHEET NO. OF SHEETS STA. TO STA.

F.A.I. RTE.	SECTION	COUNTY	TOTAL SHEETS	SHEET NO.
94	0101 15-1	COOK	20	6
				CONTRACT NO. 60J29
ILLINOIS FED. AID PROJECT				



**NOTES:**

1. THE PROPOSED PAVEMENT MARKINGS SHALL BE PLACED IN THE SAME LOCATIONS AS THE EXISTING PAVEMENT MARKINGS OR AS DIRECTED BY THE ENGINEER

ADDENDUM NO. 1 - 3/26/2010

FILE NAME =  
\*FILEL\*



DESIGNED - TWL  
DRAWN - JLS  
CHECKED - SF  
DATE - 1/29/2010

REVISED -  
REVISED -  
REVISED -  
REVISED -

STATE OF ILLINOIS  
DEPARTMENT OF TRANSPORTATION

PAVEMENT MARKING PLAN  
FOREST PRESERVE ROAD

SCALE: 1" = 40' SHEET NO. OF SHEETS STA. TO STA.

F.A.I. RTE.	SECTION	COUNTY	TOTAL SHEETS	SHEET NO.
94	0101 15-1	COOK	20	7
CONTRACT NO. 60J29				
ILLINOIS FED. AID PROJECT				

Existing Structure: SN 016-2039, built in 1957 as F.A.I. Rte. 2-Project I-02-2(15) Section 263-010L15-15D over Edens Expressway (F.A.I-94).  
 Repaired and resurfaced in 1982 as two equal span Reinforced Concrete deck on Precast Prestressed Concrete Beams.  
 The structure measures 39'-0" Out to Out Deck and 128'-5<sup>7</sup>/<sub>8</sub>" End to End of Deck Slab. The substructure consists of Reinforced Concrete closed abutments and a multi-column Pier.  
 Traffic is to be maintained utilizing staged construction. One lane for both directions will be provided by using temporary traffic signals.

STATE OF ILLINOIS  
 DEPARTMENT OF TRANSPORTATION

**GENERAL NOTES**

Plan dimensions and details relative to existing plans are subject to nominal construction variations. The Contractor shall field verify existing dimensions and details affecting new construction and make necessary approved adjustments prior to construction or ordering of materials. Such variations shall not be cause for additional compensation for a change in scope of the work, however, the Contractor will be paid for the quantity actually furnished at the unit price bid for the work.

Reinforcement bars shall conform to the requirements of ASTM A 706 Gr 60. See Special Provisions.

Reinforcement bars designated (E) shall be epoxy coated.

**DESIGN SPECIFICATIONS**

2002 AASHTO Standard Specifications, 17th Edition.

**DESIGN STRESSES**

FIELD UNITS  
 f'c = 3,500 psi  
 fy = 60,000 psi

**LAST DELAMINATION SURVEY**

October 2009

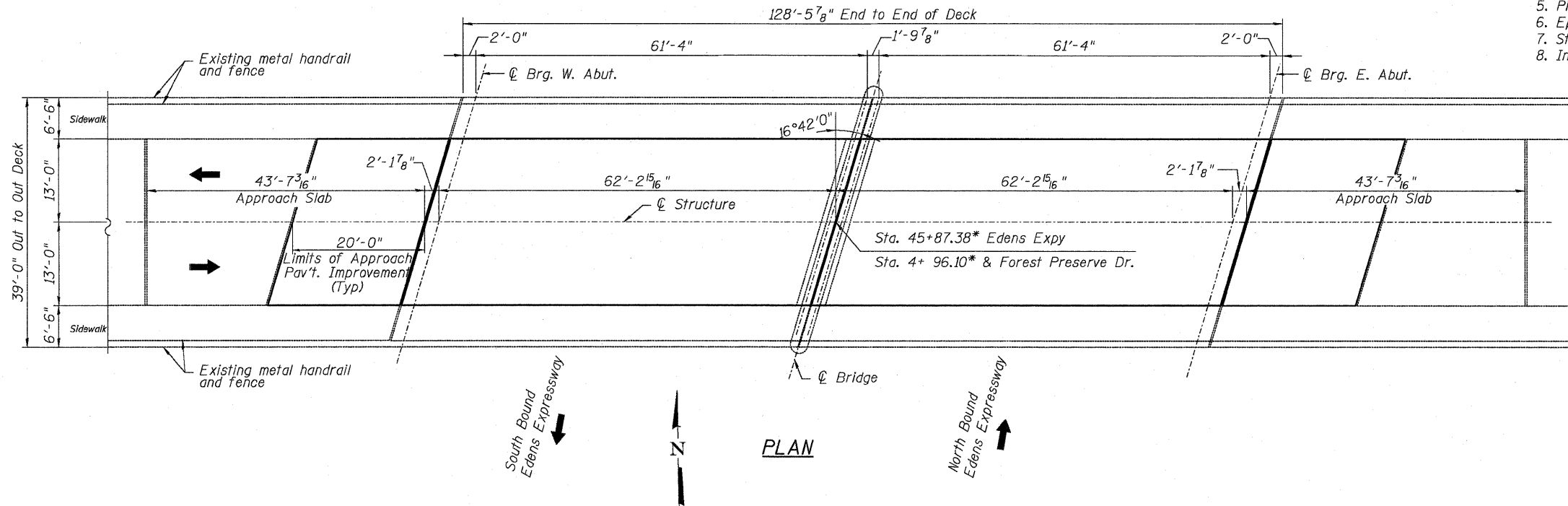
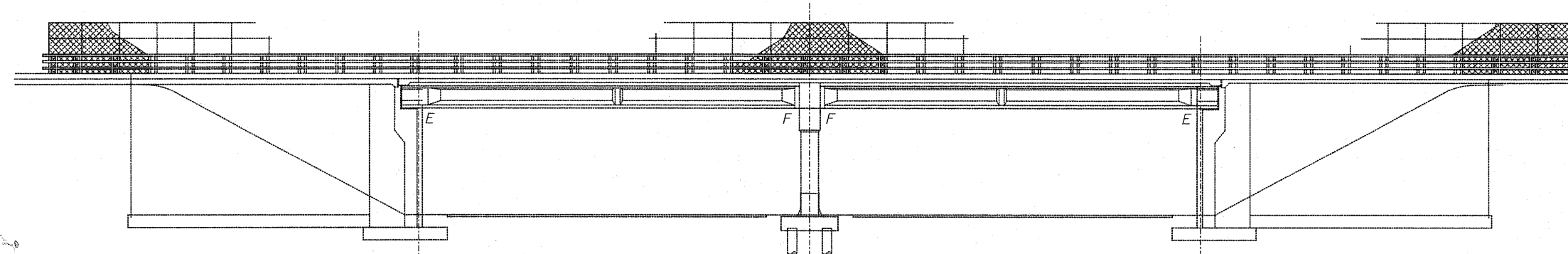
**SCOPE OF WORK**

1. Remove HMA overlay.
2. Full & Partial Depth Slab repairs.
3. Hydroscarify 1/2 inch deck slab surface.
4. Reconstruction of transverse expansion joints.
5. Place 2 1/2 inch latex concrete overlay.
6. Epoxy Crack Injection on PPC I-Beam.
7. Structural Repairs of Concrete to substructures.
8. Install Permanent Protective Shielding.

**INDEX OF SHEETS**

- S1 - General Plan & Elevation
- S2 - Stage Construction Details
- S3 - Temporary Concrete Barrier
- S4 - Bridge Deck Patching & Hydro-scarification Plan
- S5 - Protective Shield Plan & PPC-Beam Repair Detail
- S6 - Protective Shield Details
- S7 - Abutments Repair Details
- S8 - Piers Repair Details
- S9 - Transverse Joint Reconstruction Details

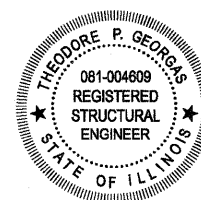
**SOUTH ELEVATION**



**TOTAL BILL OF MATERIAL**

ITEM	UNIT	SUPER	SUB	TOTAL
Hot-Mix Asphalt Surface Removal (Deck)	Sq. Yd.	368	-	368
Hot-Mix Asphalt Surface Removal, 2"	Sq. Yd.	115	-	115
Bridge Deck Hydro-scarification 1/2"	Sq. Yd.	368	-	368
Bridge Deck Grooving	Sq. Yd.	368	-	368
Protective Coat	Sq. Yd.	368	29	397
Bridge Deck Latex Concrete Overlay, 2 1/2"	Sq. Yd.	368	-	368
Structural Repair of Concrete (Depth equal to or less than 5 inches)	Sq. Ft.	-	259	259
Silicone Joint Sealer, 1 1/2"	Foot	127	-	127
Deck Slab Repair (Full Depth Type II)	Sq. Yd.	5	-	5
Polymer Concrete	Cu. Ft.	7	-	7
Hot-Mix Asphalt Surface Course, Mix "C", N-50, 2"	Tons	14	-	14
Protective Shield (Permanent)	Sq. Yd.	514	-	514
Epoxy Crack Injection	Foot	24	-	24

\* Information taken from 1981 existing plans.



*Theodore P. Georgas* 3-1-10  
 Theodore P. Georgas Date  
 Licensed Structural Engineer  
 State of Illinois 081-4609  
 Expires 11/30/2010

**GENERAL PLAN AND ELEVATION  
 FOREST PRESERVE DRIVE  
 OVER F.A.I. 94 (EDENS EXPRESSWAY)  
 COOK COUNTY  
 STA. 4+96.10  
 STRUCTURE NO. 016-2039**

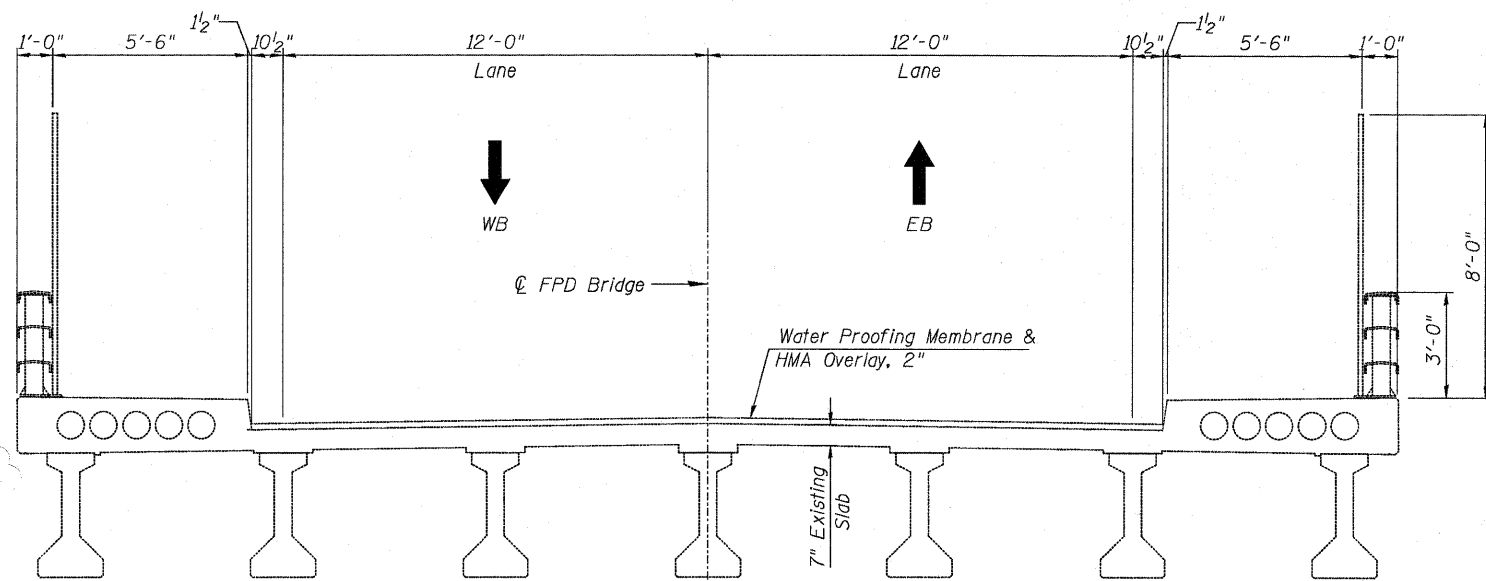
DESIGNED JPM
CHECKED TG
DRAWN MPS
CHECKED JPM, TG



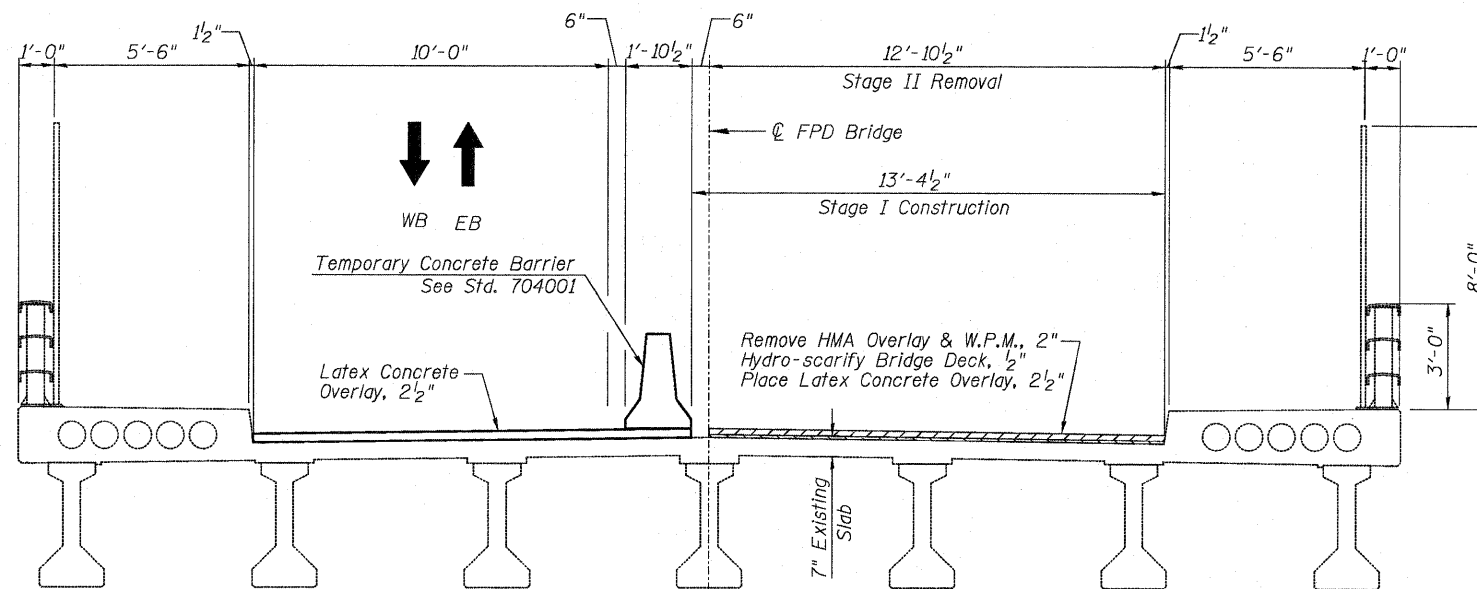
SHEET NO. S1	F.A.I. RTE.	SECTION	COUNTY	TOTAL SHEETS	SHEET NO.
S9 SHEETS	94	0101.15-1	COOK	20	8
			CONTRACT NO. 60J29		
ILLINOIS FED. AID PROJECT					



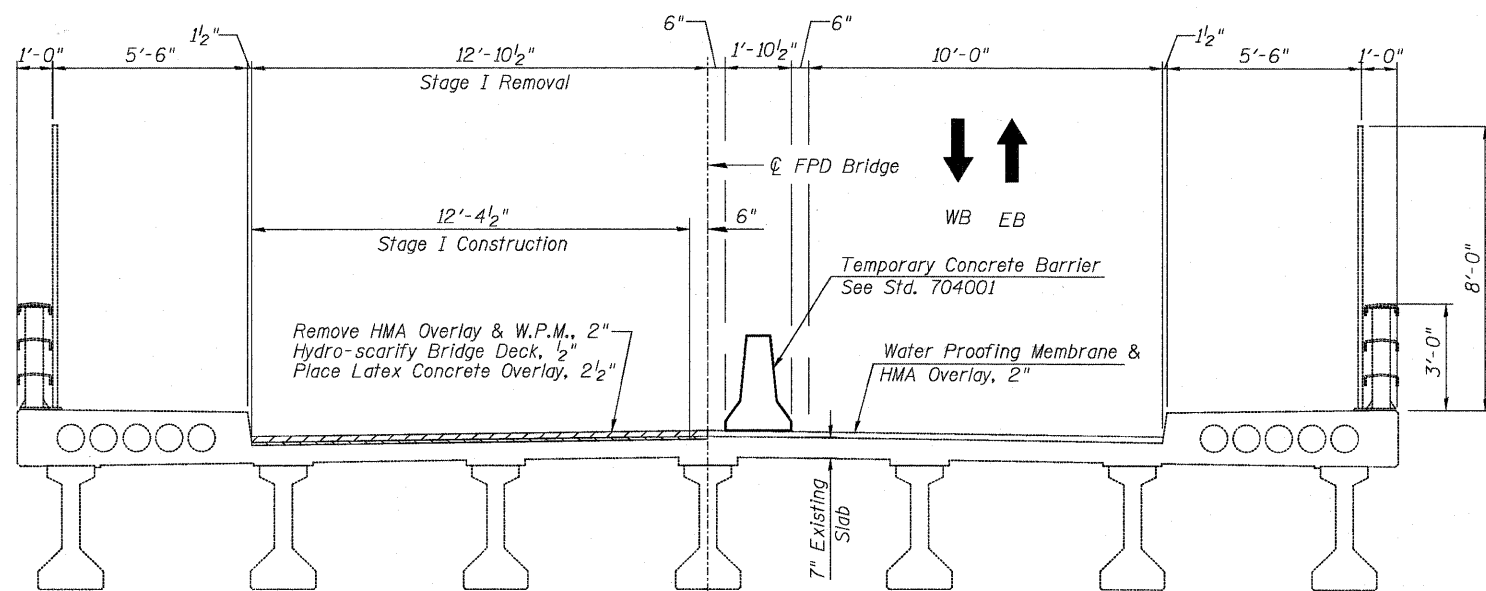
STATE OF ILLINOIS  
DEPARTMENT OF TRANSPORTATION



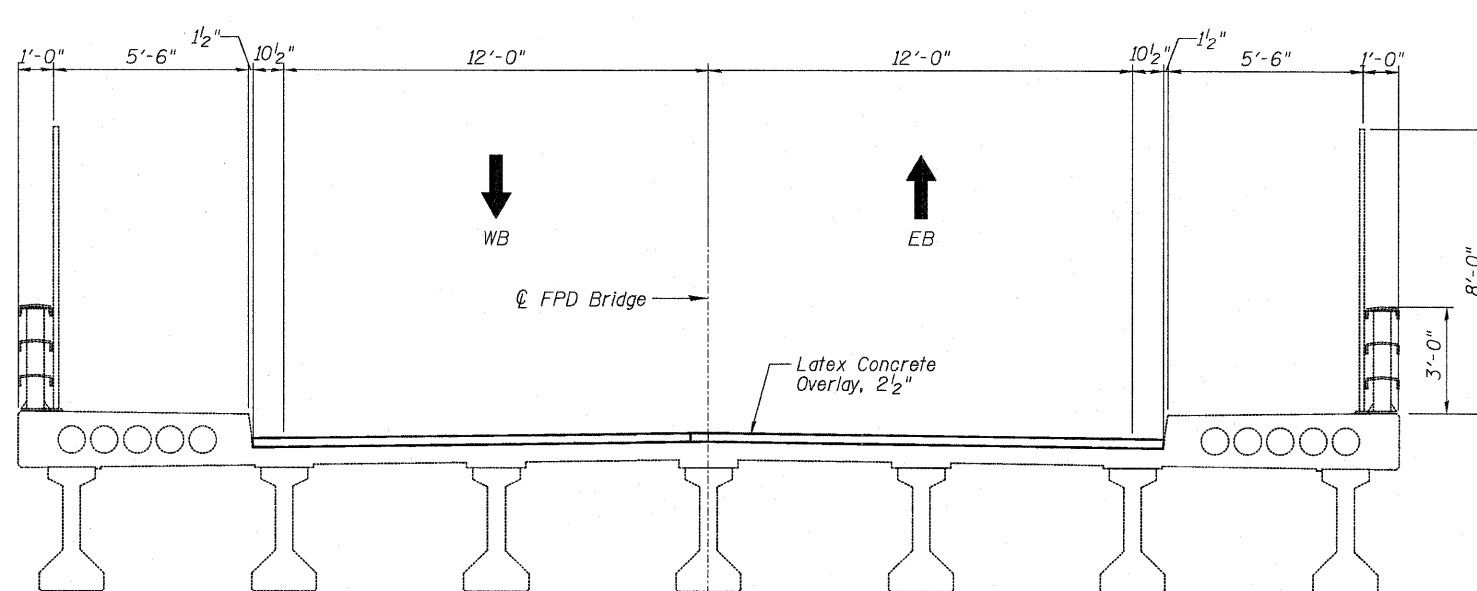
**EXISTING**  
Looking East



**STAGE 2 REMOVAL & CONSTRUCTION**  
Looking East

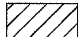
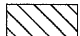


**STAGE 1 REMOVAL & CONSTRUCTION**  
Looking East



**FINAL**  
Looking East

**LEGEND:**

-  HMA Overlay Removal
-  Bridge Deck Hydro-scarification 1/2"

DESIGNED	JPM
CHECKED	TG
DRAWN	MPS
CHECKED	JPM, TG

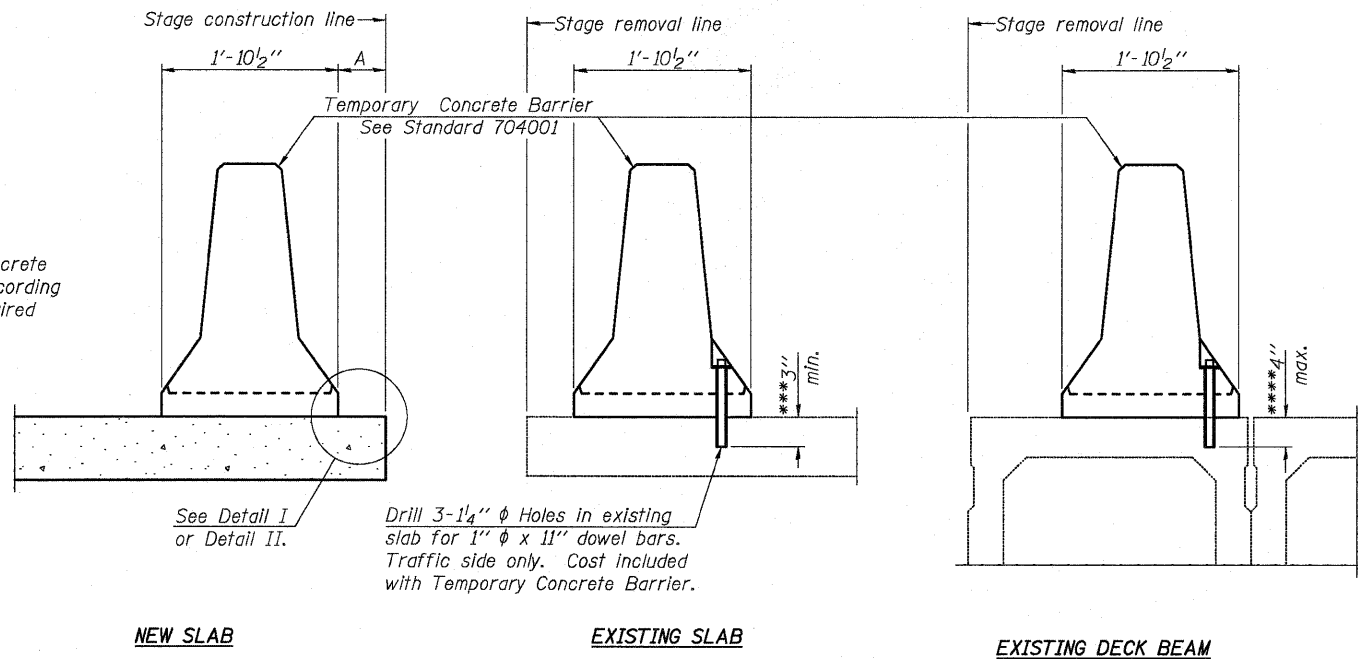


180 S. WACKER DRIVE SUITE 700 • CHICAGO, IL 60606 • P:312-686-8918 F:312-686-8415

**STAGE CONSTRUCTION DETAILS**  
**STRUCTURE NO. 016-2039**

SHEET NO. S2	F.A.I. RTE.	SECTION	COUNTY	TOTAL SHEETS	SHEET NO.
	94	0101.15-I	COOK	20	9
S9 SHEETS	CONTRACT NO. 60J29			ILLINOIS FED. AID PROJECT	

STATE OF ILLINOIS  
DEPARTMENT OF TRANSPORTATION



When "A" is 3'-6" or less, the temporary concrete barrier shall be anchored to the new slab according to Detail I or Detail II. No anchorage is required when "A" is greater than 3'-6".

NEW SLAB

EXISTING SLAB

EXISTING DECK BEAM

SECTIONS THRU SLAB OR DECK BEAM

NOTES

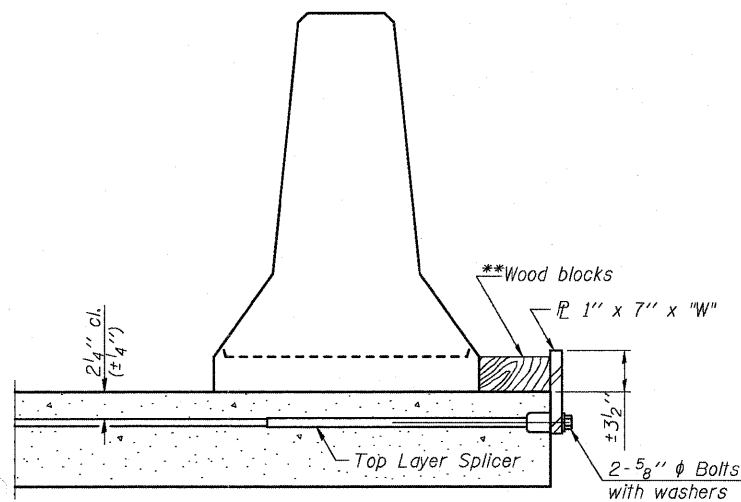
Detail I - With Bar Splicer or Couplers:  
Connect one (1) 1" x 7" x 10" steel  $\bar{P}$  to the top layer of couplers with 2-5/8"  $\phi$  bolts screwed to coupler at approximate  $\bar{C}$  of each barrier panel.

Detail II - With Extended Reinforcement Bars:  
Connect one (1) 1" x 7" x 10" steel  $\bar{P}$  to the concrete slab or concrete wearing surface with 2-5/8"  $\phi$  Expansion Anchors or cast in place inserts spaced between the top layer of reinforcement at approximate  $\bar{C}$  of each barrier panel.

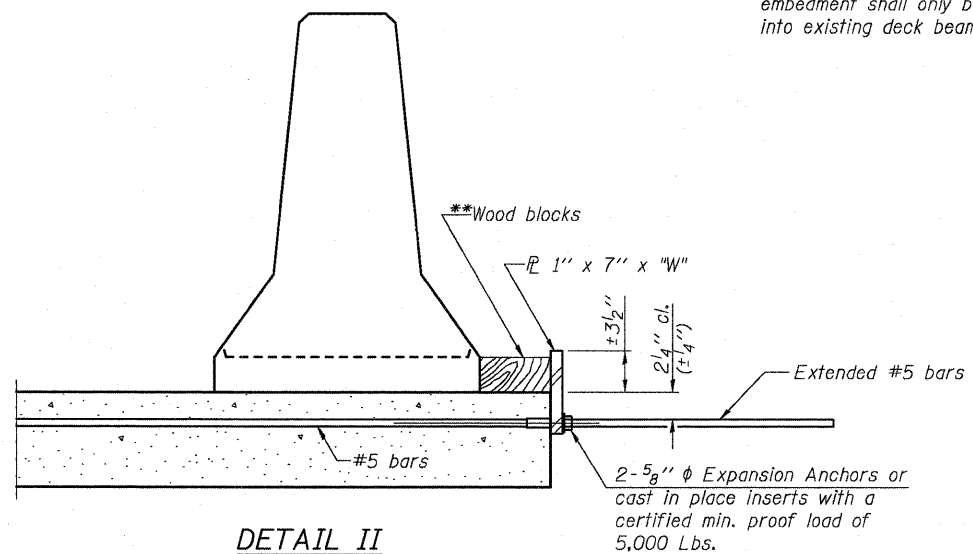
Cost of anchorage is included with Temporary Concrete Barrier. The 1" x 7" x 10" plate shall not be removed until stage II construction forms and all reinforcement bars are in place and the concrete is ready to be placed.

\*\*\* Dimension shown is minimum required embedment into concrete. If hot-mix asphalt wearing surface is present, minimum embedment shall be in addition to wearing surface depth.

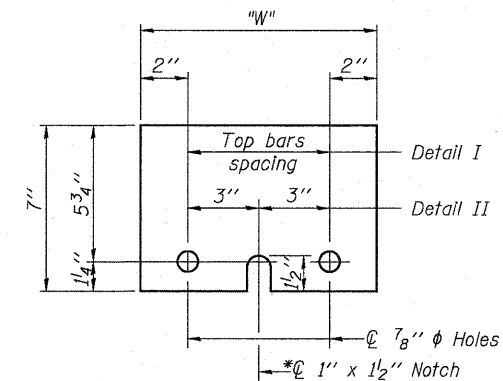
\*\*\*\* If existing deck beam is to remain in place after stage construction, embedment shall only be into wearing surface and not into existing deck beam concrete.



DETAIL I



DETAIL II



STEEL RETAINER  $\bar{P}$  1" x 7" x 10"

\* Required only with Detail II

\*\* Wood blocks may be omitted when required to provide minimum stage traffic lane width. When the wood blocks are omitted, the concrete barrier shall be in direct contact with the steel retainer plate.

"W" = Top bars spacing + 4"

DESIGNED	JPM
CHECKED	TG
DRAWN	MPS
CHECKED	JPM, TG

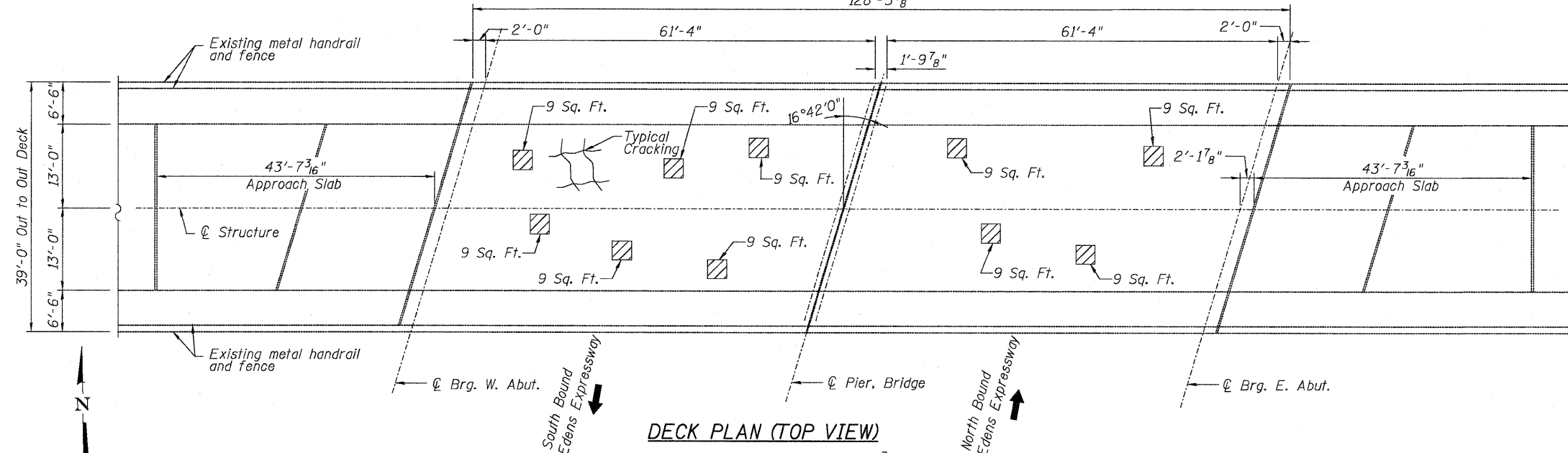


180 S. WICKER DRIVE SUITE 700 • CHICAGO IL 60606 • P:312-686-8910 F:312-686-8415

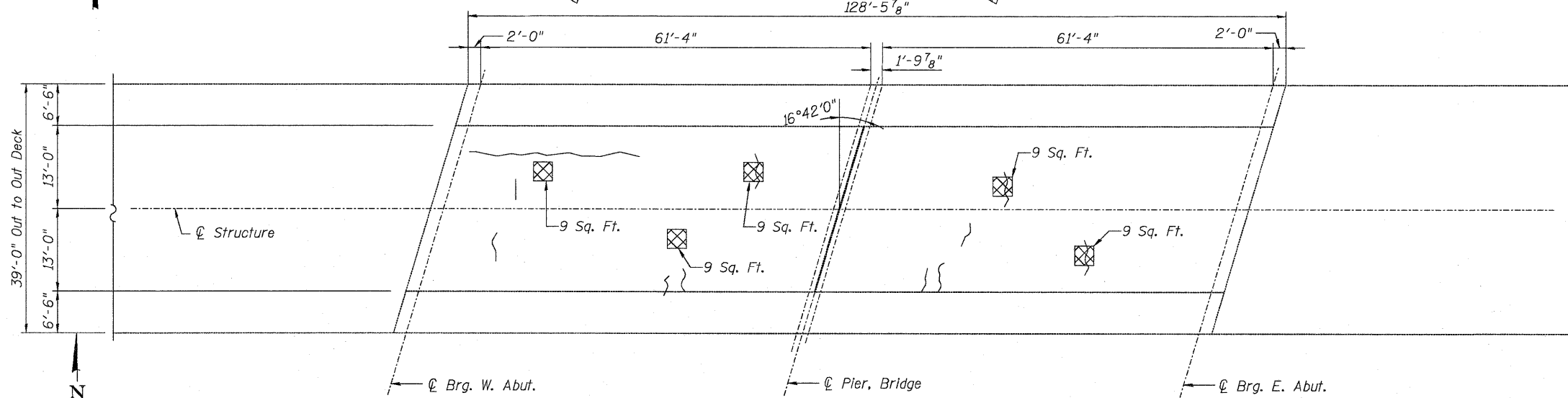
TEMPORARY CONCRETE BARRIER  
STRUCTURE NO. 016-2039

SHEET NO. S3	F.A.I. RTE.	SECTION	COUNTY	TOTAL SHEETS	SHEET NO.
	94	0101.15-I	COOK	20	10
S9 SHEETS	CONTRACT NO. 60J29			ILLINOIS FED. AID PROJECT	

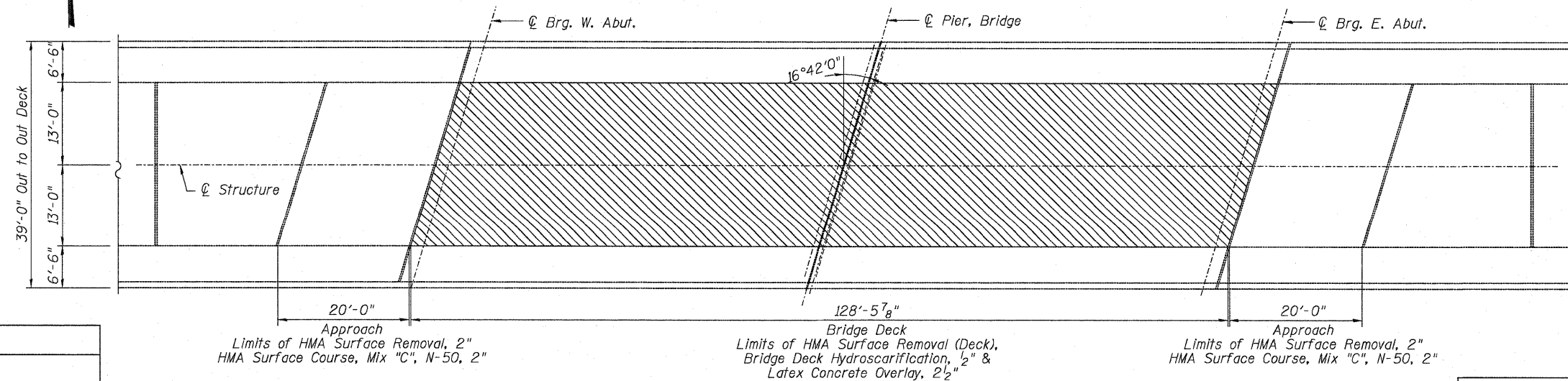
STATE OF ILLINOIS  
DEPARTMENT OF TRANSPORTATION  
128'-5 7/8"



DECK PLAN (TOP VIEW)



DECK PLAN (UNDERSIDE)



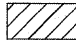

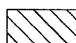
DECK PLAN (HYDRO-SCARIFICATION)

Note:  
Repair of the existing bridge deck shall include but may not be limited to the areas shown. The actual areas to be repaired will be determined by the Engineer at the time of construction.

BILL OF MATERIAL

ITEM	UNIT	QUANTITY
Deck Slab Repair (Full Depth Type II)	Sq. Yd.	5
Bridge Deck Hydroscarification, 1/2"	Sq. Yd.	368
Bridge Deck Latex Concrete Overlay, 2 1/2"	Sq. Yd.	368
Hot-Mix Asphalt Surface Course, Mix "C", N-50, 2"	Tons	14
Hot-Mix Asphalt Surface Removal (Deck)	Sq. Yd.	368
Hot-Mix Asphalt Surface Removal, 2"	Sq. Yd.	115

LEGEND:

-  Deck Slab Repair (Partial Depth)
-  Deck Slab Repair (Full Depth)
-  Hydro-scarification, 1/2"

BRIDGE DECK PATCHING & HYDRO-SCARIFICATION PLAN  
STRUCTURE NO. 016-2039

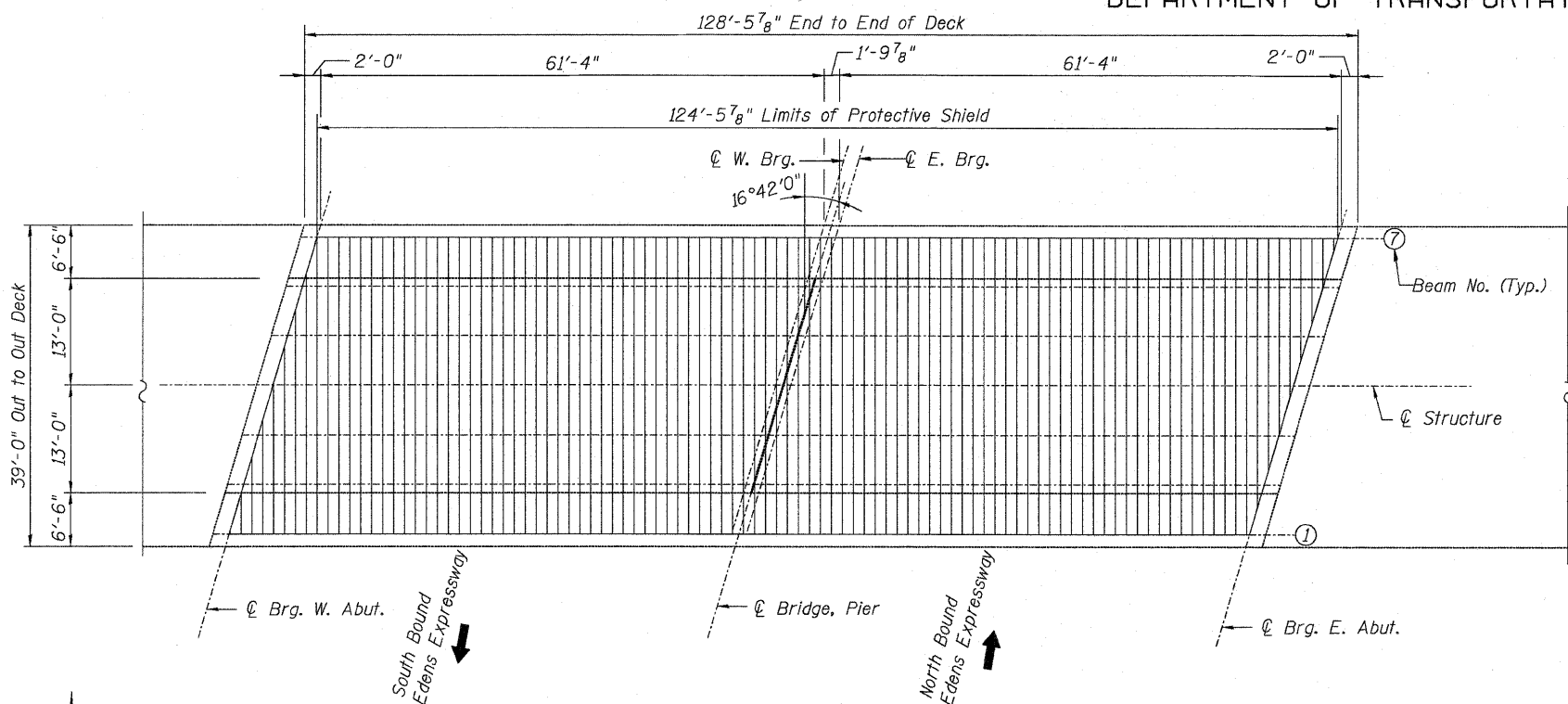
DESIGNED JPM  
CHECKED TG  
DRAWN MPS  
CHECKED JPM, TG



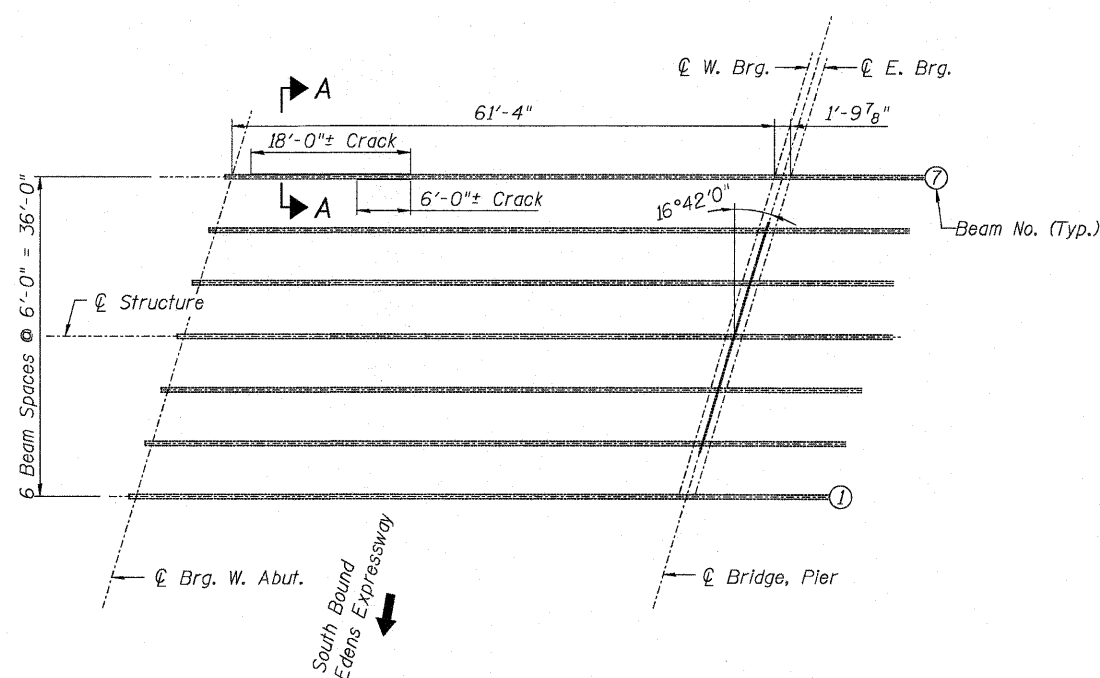
180 S. WACKER DRIVE SUITE 700, CHICAGO IL 60606 P.312-686-0910 F.312-686-0415

SHEET NO. S4 S9 SHEETS	F.A.I. RTE.	SECTION	COUNTY	TOTAL SHEETS	SHEET NO.
	94	0101.15-1	COOK	20	11
			CONTRACT NO. 60J29		
ILLINOIS FED. AID PROJECT					

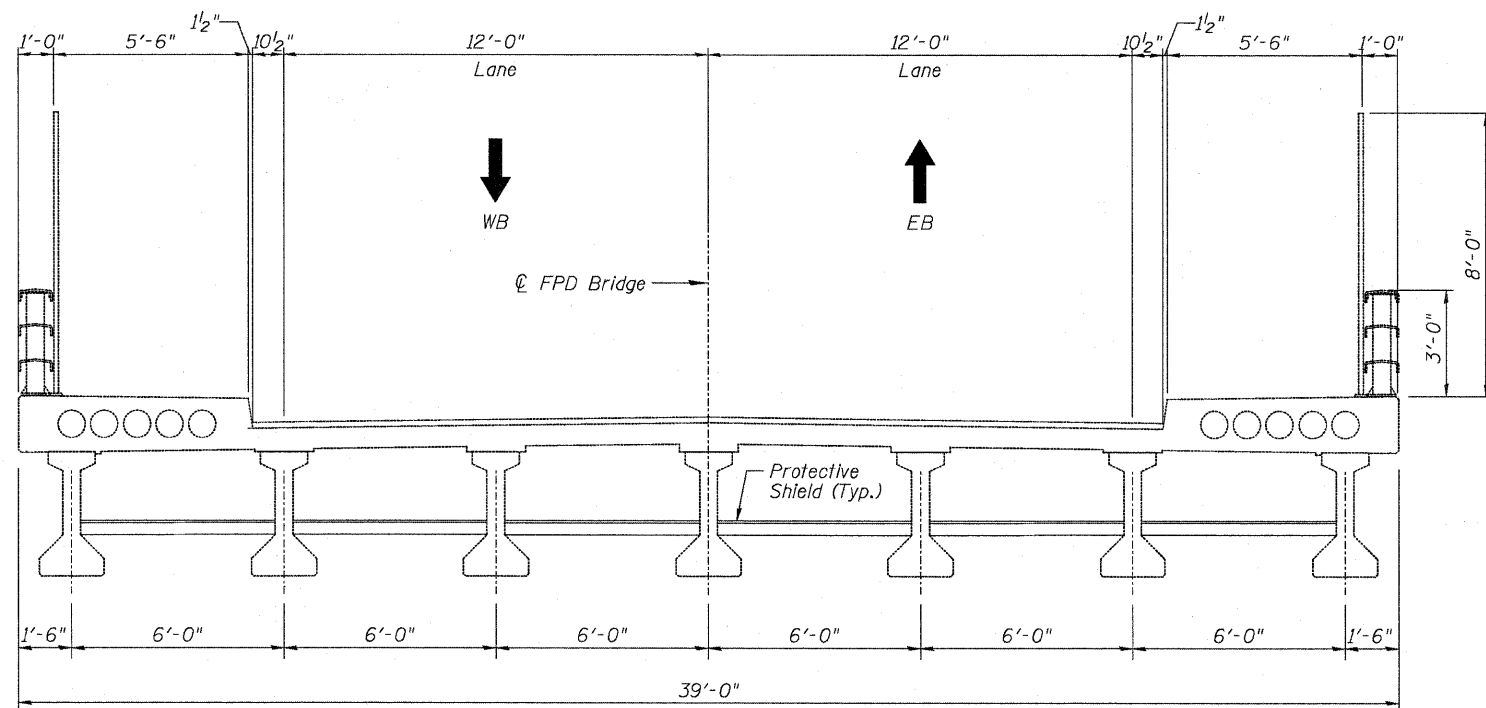
STATE OF ILLINOIS  
DEPARTMENT OF TRANSPORTATION



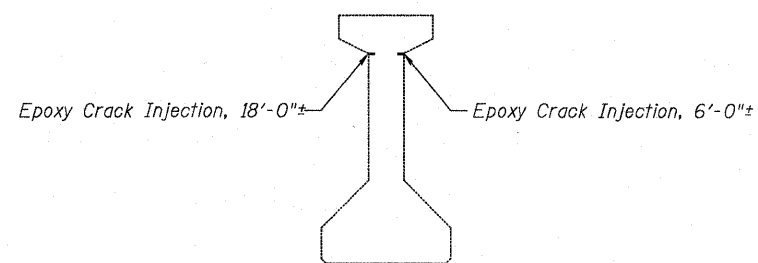
**DECK PLAN**  
PROTECTIVE SHIELD SHOWN



**PARTIAL FRAMING PLAN**



**BRIDGE CROSS SECTION**  
Looking East



**SECTION A-A**

**BILL OF MATERIAL**

ITEM	UNIT	QUANTITY
Protective Shield (Permanent)	Sq. Yd.	514
Epoxy Crack Injection	Foot	24

Note:  
1. Protective Shield shall be installed prior to deck slab repairs.  
2. For Protective Shield details, see Sheet S6 of S9.

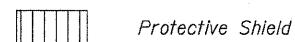
**PROTECTIVE SHIELD PLAN  
& PPC BEAM REPAIR DETAIL**  
STRUCTURE NO. 016-2039

DESIGNED	JPM
CHECKED	TG
DRAWN	MPS
CHECKED	JPM, TG



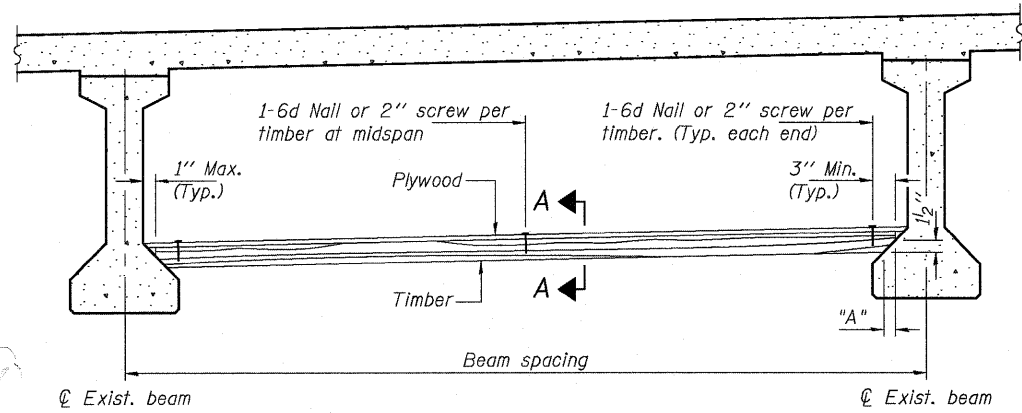
180 S. WACKER DRIVE, SUITE 700, CHICAGO, IL 60606 • P:312-686-8918 F:312-686-8415

**LEGEND:**

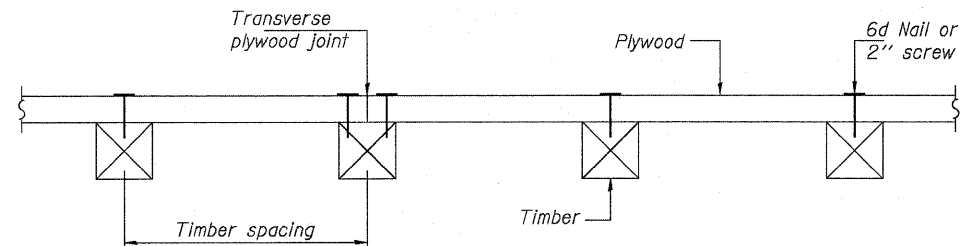


SHEET NO. S5 S9 SHEETS	F.A.I. RTE. 94	SECTION 0101.15-I	COUNTY COOK	TOTAL SHEETS 20	SHEET NO. 12
	CONTRACT NO. 60J29			ILLINOIS FED. AID PROJECT	

STATE OF ILLINOIS  
DEPARTMENT OF TRANSPORTATION



**PROTECTIVE SHIELD**



**SECTION A-A**

**TIMBER SPACING**

Beam Spacing (ft.)	Timber Sizes (in.)		
	4" x 4" with min. Fb=775 psi Fv=135 psi	4" x 6" with min. Fb=775 psi Fv=135 psi	6" x 6" with min. Fb=575 psi Fv=125 psi
	Maximum Timber Spacing (in.)		
4.5	16	16	16
4.75	16	16	16
5.0	16	16	16
5.25	16	16	16
5.5	16	16	16
5.75	16	16	16
6.0	16	16	16
6.25	12	16	16
6.5	12	16	16
6.75	12	16	16
7.0	8	16	16
7.25	8	16	16
7.5	8	16	16
7.75	8	16	16
8.0	8	12	16
8.25	8	12	16
8.5	6	12	12
8.75	6	12	12
9.0	6	8	12

**PPC I-BEAMS AND BULB-T's**

BEAM	"A"
36" I-Beam	1 1/2"
42" I-Beam	1 1/2"
48" I-Beam	1 1/2"
54" I-Beam	1 5/8"
63" Bulb-T	3 3/8"
72" Bulb-T	3 3/8"

Notes: See special provision for Temporary Protective Shield System.  
Timber sizes shown are nominal sizes. Rough sawn timber of the dimensions shown will also be considered acceptable.  
The minimum Fb and Fv values shown are the tabulated design values given in the National Design Specification for Wood Construction for No. 2 Spruce-Pine-Fir without adjustment factors applied. Better grades or other species with equal or higher allowable stresses will also be considered acceptable.  
The timber spacings shown have been determined using allowable stresses with all adjustment factors necessary for the anticipated service conditions.  
All timber shall be treated.  
Plywood shall be 5/8" rated Exterior type plywood by APA.  
Plywood shall be placed such that the face grain is perpendicular to the timber supports. When less than a full sheet (4' width) of plywood is used, the width of the strip used shall not be less than 2'.  
Transverse plywood joints shall be supported by timbers.  
When 4" x 6" timbers are used, they shall be placed such that the wide face is horizontal and the narrow face is vertical.  
Design load = 200 psf.

**BILL OF MATERIAL**

Item	Unit	Total
Protective Shield (Permanent)	Sq. Yd.	514

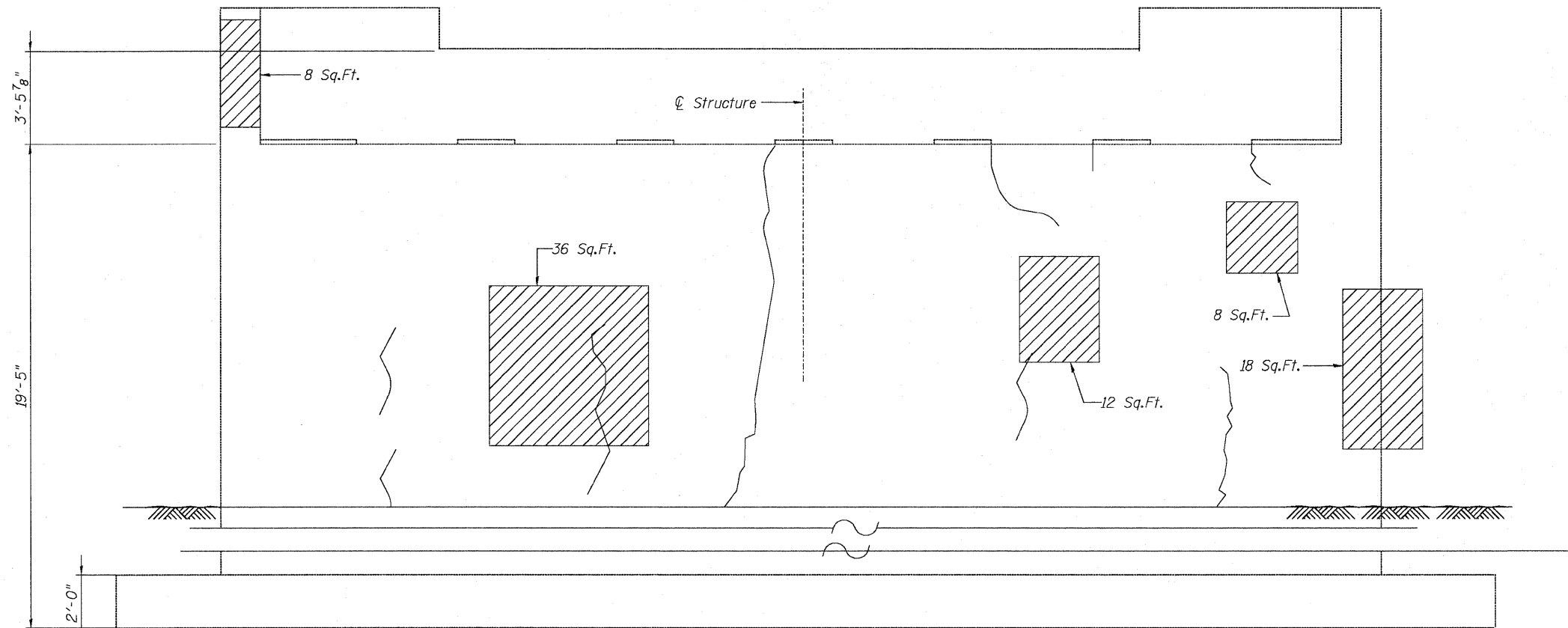
**PROTECTIVE SHIELD DETAILS  
STRUCTURE NO. 016-2039**

DESIGNED JPM
CHECKED TG
DRAWN MPS
CHECKED JPM, TG

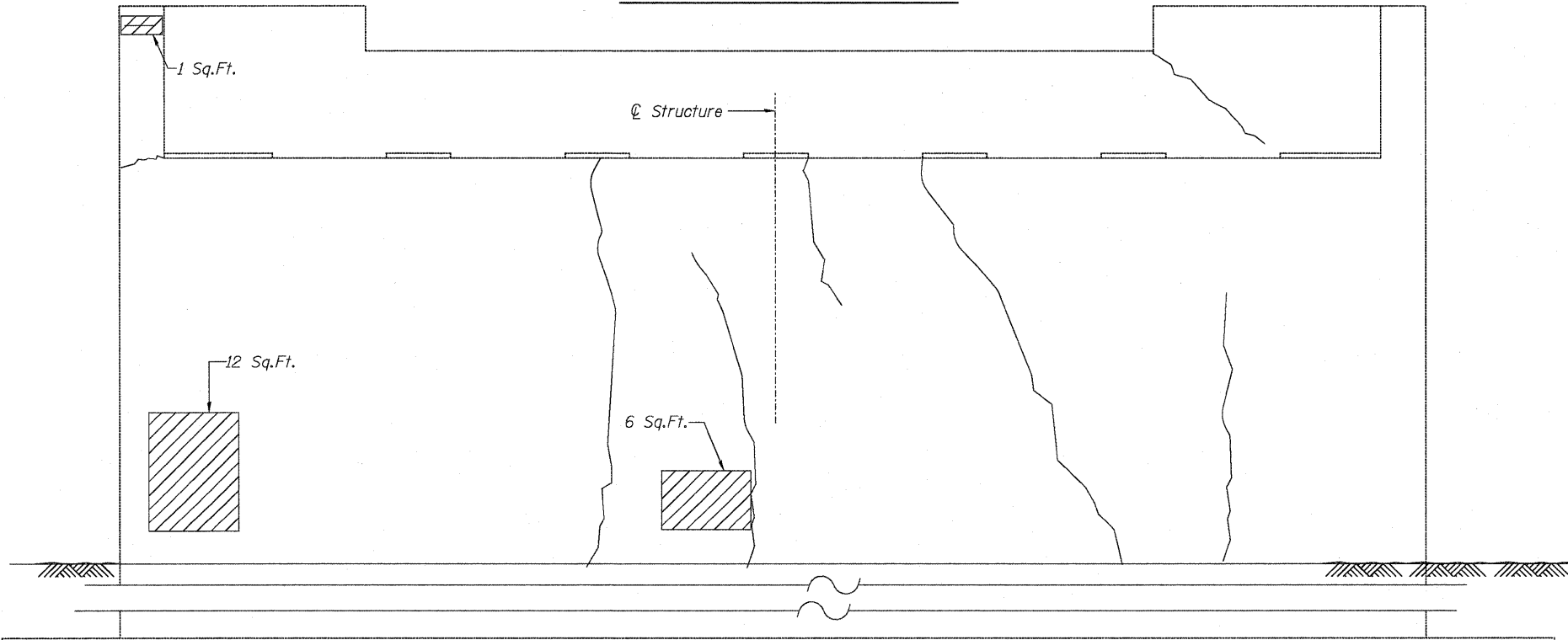


SHEET NO. S6	F.A.I RTE.	SECTION	COUNTY	TOTAL SHEETS	SHEET NO.
S9 SHEETS	94	0101.15-I	COOK	20	13
			CONTRACT NO. 60J29		
ILLINOIS FED. AID PROJECT					

STATE OF ILLINOIS  
DEPARTMENT OF TRANSPORTATION



EAST ABUTMENT ELEVATION



WEST ABUTMENT ELEVATION

BILL OF MATERIAL

ITEM	UNIT	QUANTITY
Structural Repair of Concrete (Depth equal to or less than 5")	Sq. Ft.	101

LEGEND:

Structural Repair of Concrete  
(Depth equal to or less than 5")

*Note:*  
Repair of the existing abutment shall include but may not be limited to the areas shown. The actual areas to be repaired will be determined by the Engineer at the time of construction.

ABUTMENT REPAIR DETAILS  
STRUCTURE NO. 016-2039

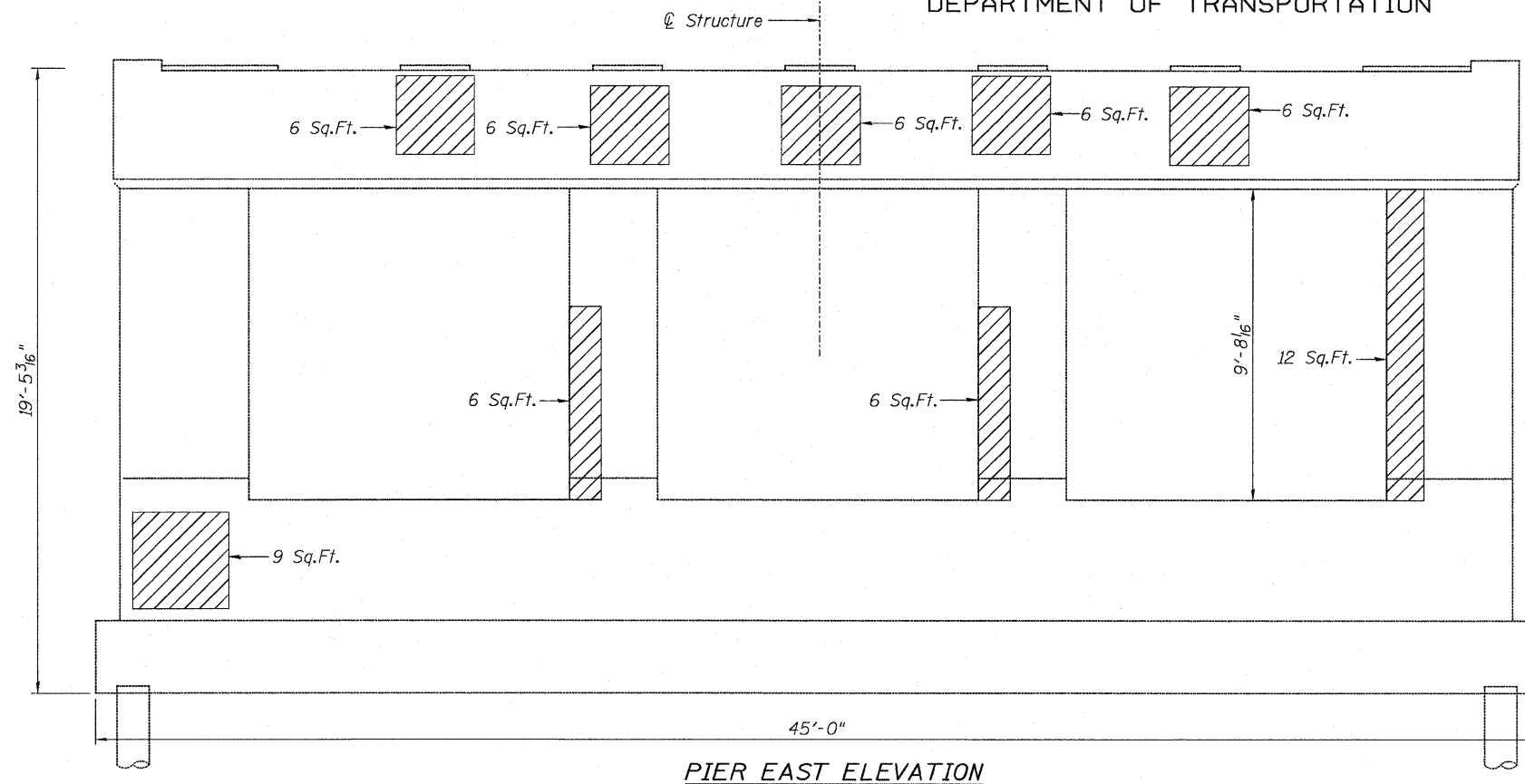
DESIGNED	JPM
CHECKED	TG
DRAWN	MPS
CHECKED	JPM, TG



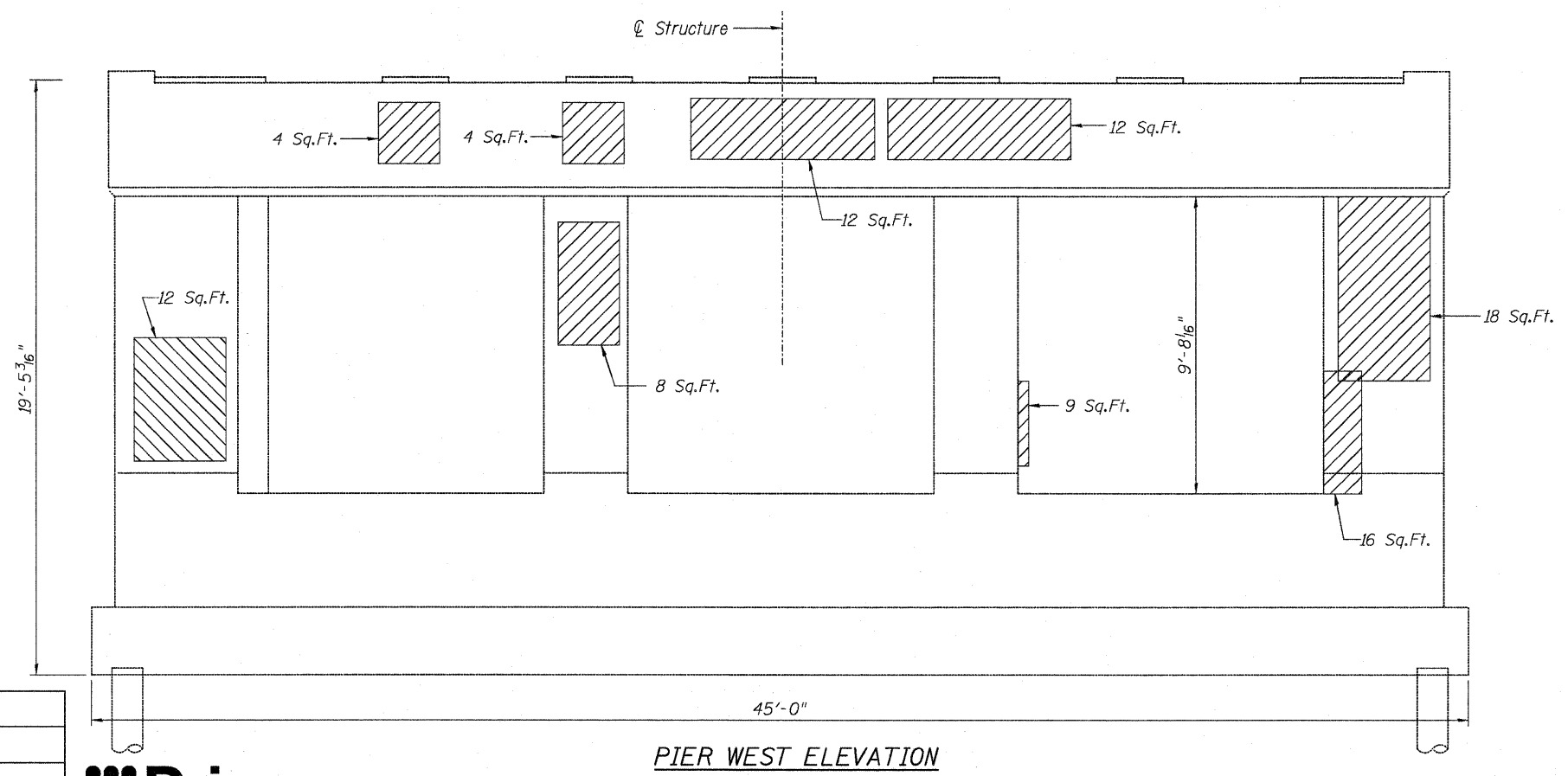
180 S. WACKER DRIVE SUITE 700 CHICAGO IL 60606 P.312-686-8918 F.312-686-8415

SHEET NO. 57	F.A.I. RTE.	SECTION	COUNTY	TOTAL SHEETS	SHEET NO.
	94	0101.15-1	COOK	20	14
S9 SHEETS	CONTRACT NO. 60J29			ILLINOIS FED. AID PROJECT	

STATE OF ILLINOIS  
DEPARTMENT OF TRANSPORTATION



PIER EAST ELEVATION



PIER WEST ELEVATION

BILL OF MATERIAL

ITEM	UNIT	QUANTITY
Structural Repair of Concrete (Depth equal to or less than 5")	Sq. Ft.	158

LEGEND:

Structural Repair of Concrete  
(Depth equal to or less than 5")

Note:  
Repair of the existing pier shall include  
but may not be limited to the areas shown. The  
actual areas to be repaired will be determined  
by the Engineer at the time of construction.

DESIGNED JPM  
CHECKED TG  
DRAWN MPS  
CHECKED JPM, TG



PIER REPAIR DETAILS  
STRUCTURE NO. 016-2039

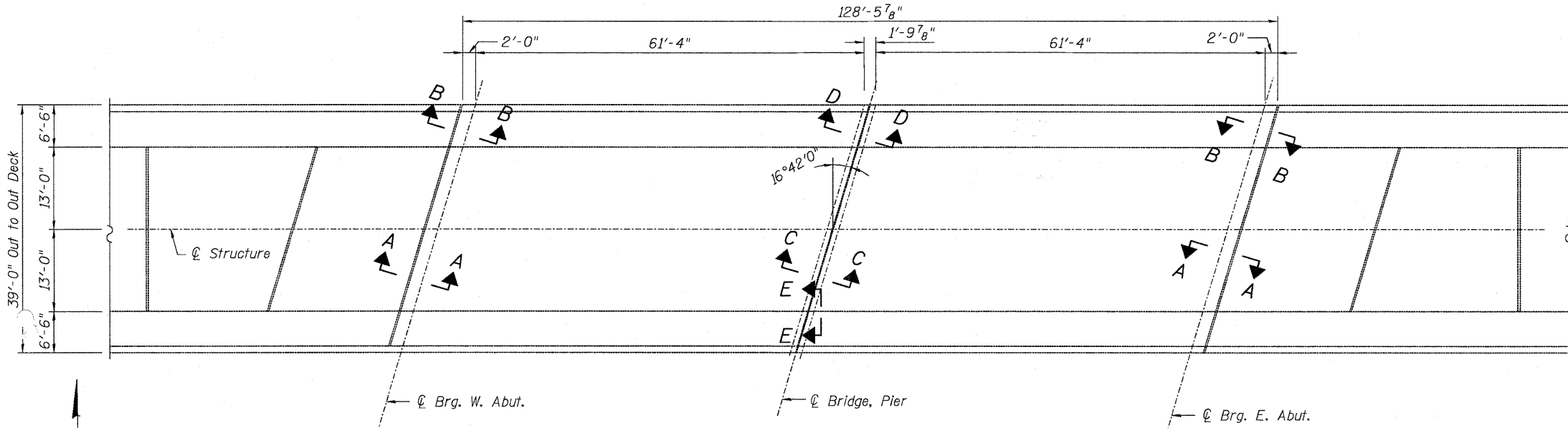
SHEET NO. S8	F.A.I RTE.	SECTION	COUNTY	TOTAL SHEETS	SHEET NO.
	94	0101.15-I	COOK	20	15
S9 SHEETS	CONTRACT NO. 60J29			ILLINOIS FED. AID PROJECT	

STATE OF ILLINOIS  
DEPARTMENT OF TRANSPORTATION

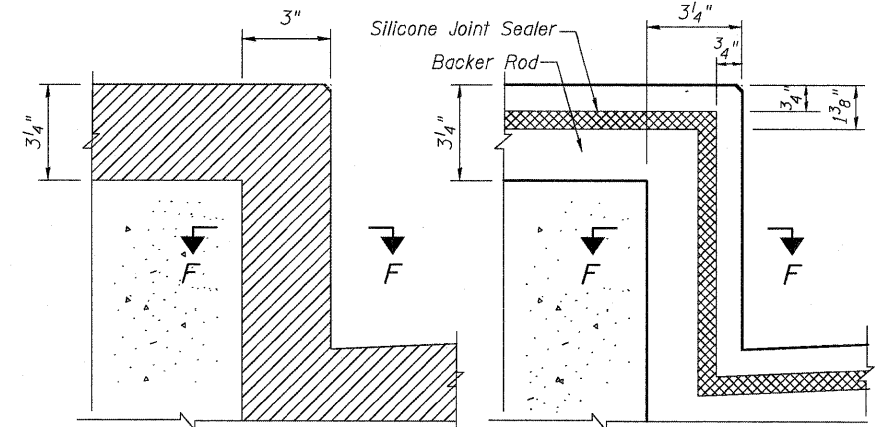
**BILL OF MATERIAL**

ITEM	UNIT	QUANTITY
Silicone Joint Sealer, 1 3/4"	Foot	127
Polymer Concrete	Cu. Ft.	7

NOTE:  
Concrete Removal is included with Polymer Concrete

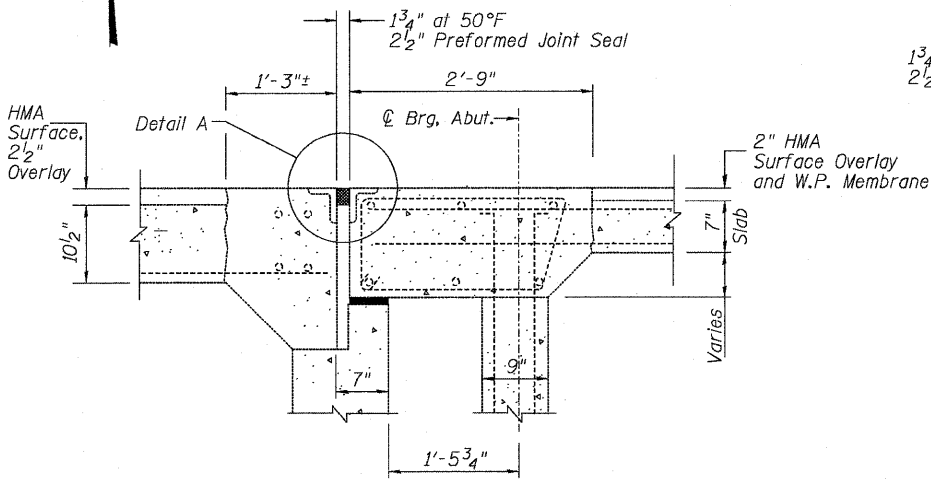


**DECK PLAN**

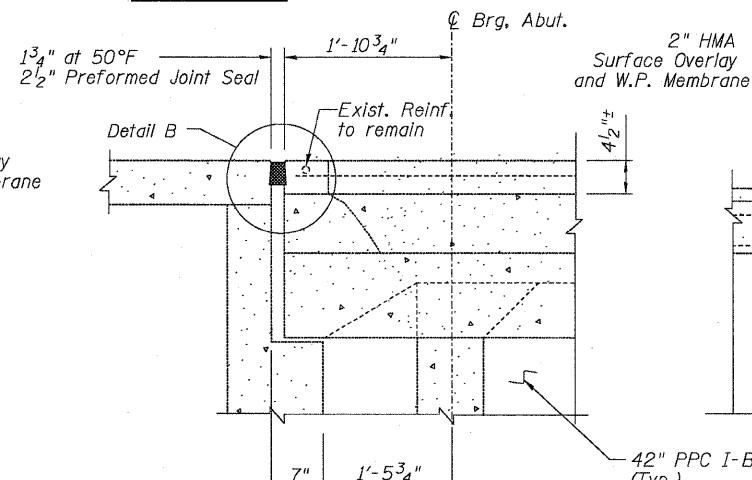


**SECTION E-E  
EXISTING**

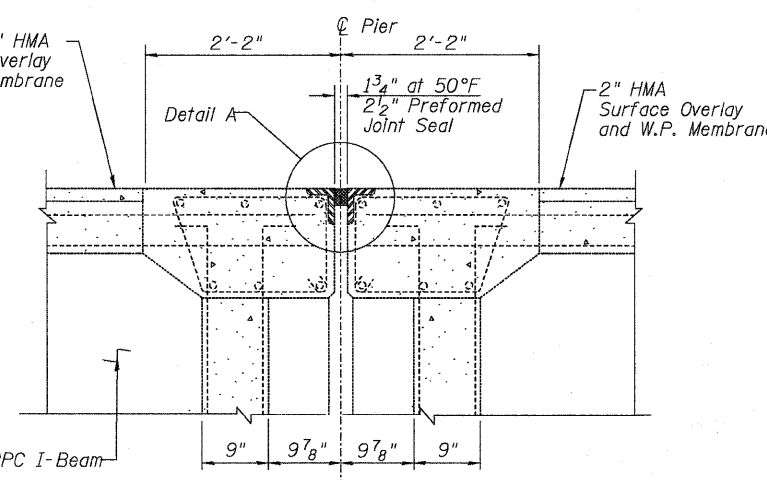
**SECTION E-E  
PROPOSED**



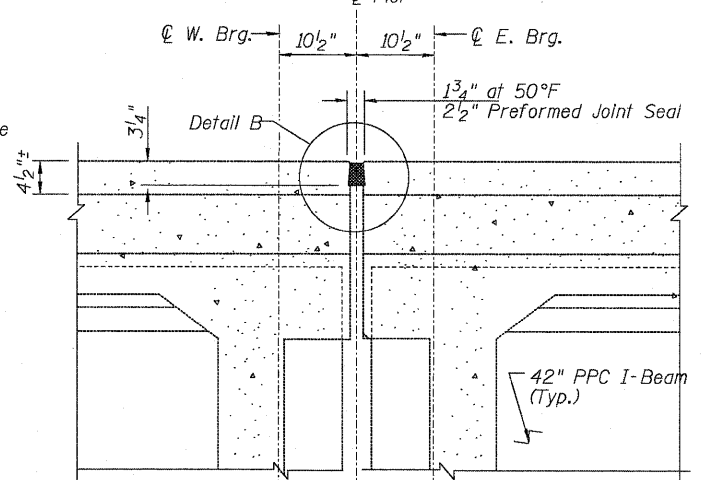
**SECTION A-A  
EXISTING**



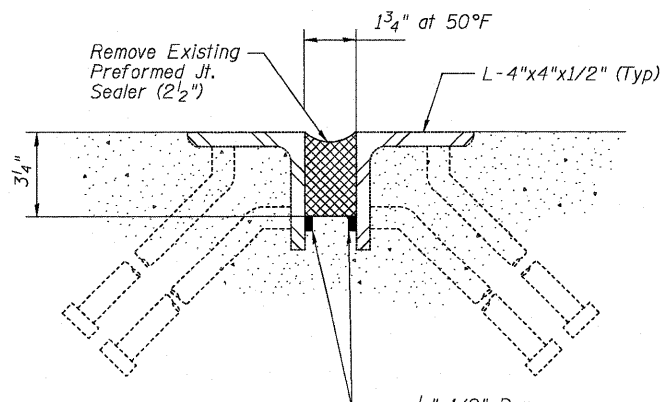
**SECTION B-B  
EXISTING**



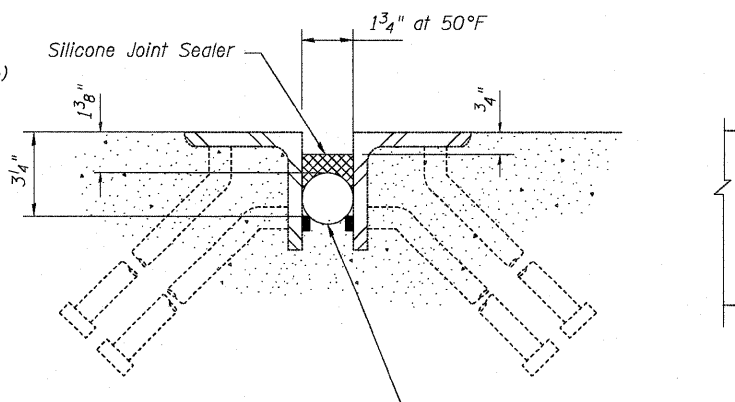
**SECTION C-C  
EXISTING**



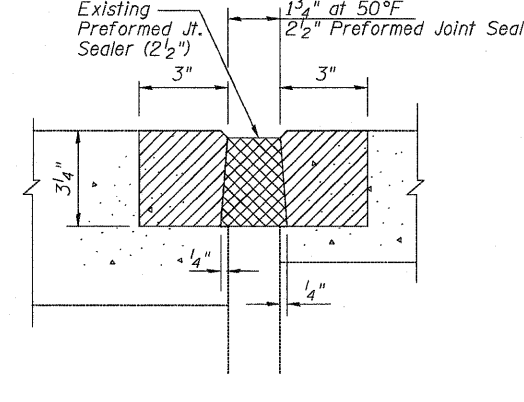
**SECTION D-D  
EXISTING**



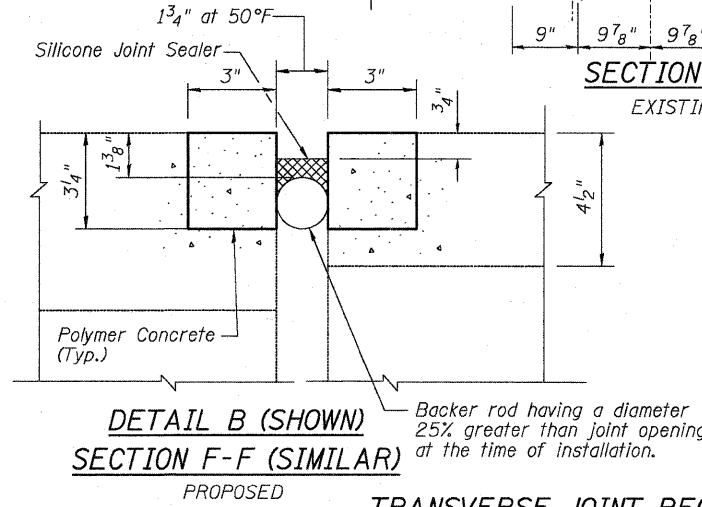
**DETAIL A  
EXISTING**



**DETAIL A  
PROPOSED**



**DETAIL B (SHOWN)  
SECTION F-F (SIMILAR)  
EXISTING**



**DETAIL B (SHOWN)  
SECTION F-F (SIMILAR)  
PROPOSED**

**LEGEND:**  
 Concrete Removal

**TRANSVERSE JOINT RECONSTRUCTION DETAILS  
STRUCTURE NO. 016-2039**

DESIGNED JPM  
CHECKED TG  
DRAWN MPS  
CHECKED JPM, TG



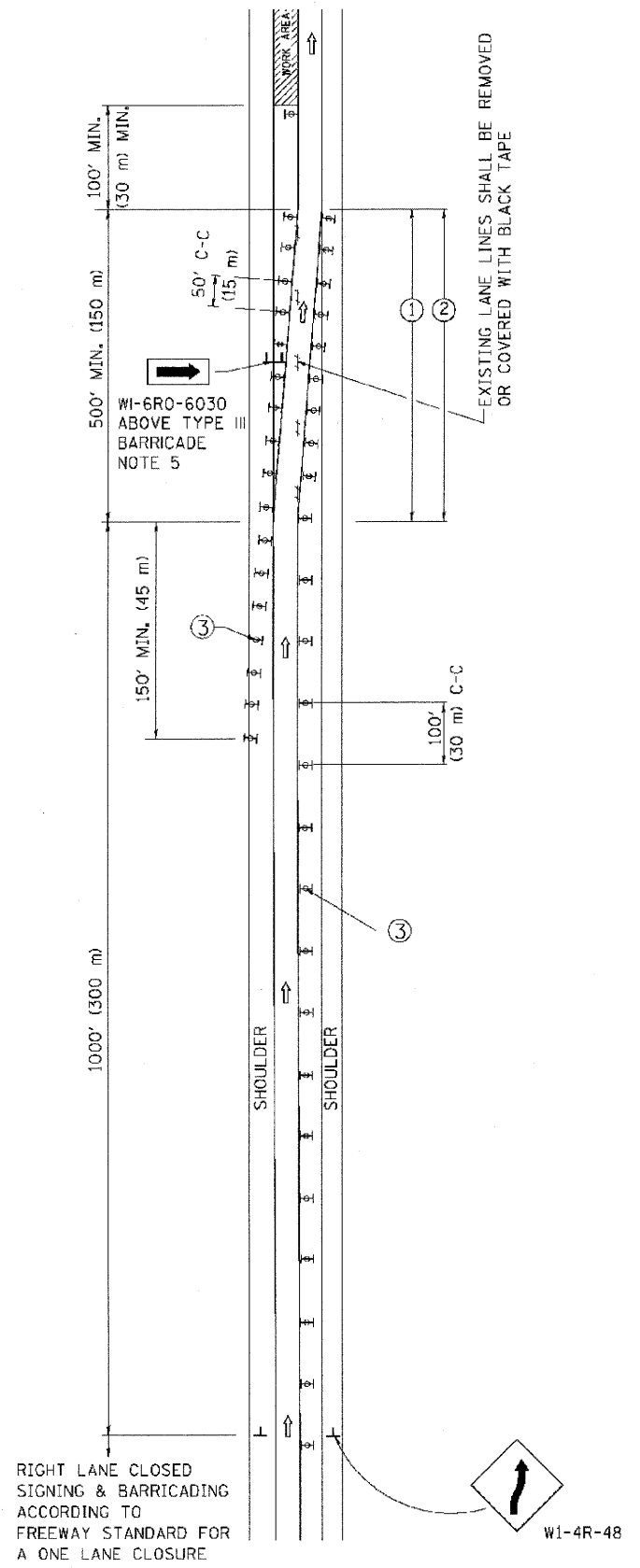
110 S. WACKER DRIVE SUITE 700 • CHICAGO IL 60606 • F.312-686-9910 F.312-686-9415

SHEET NO.	F.A.I. RTE.	SECTION	COUNTY	TOTAL SHEETS	SHEET NO.
S9	94	0101.15-I	COOK	20	16
S9 SHEETS			CONTRACT NO. 60J29		
ILLINOIS FED. AID PROJECT					

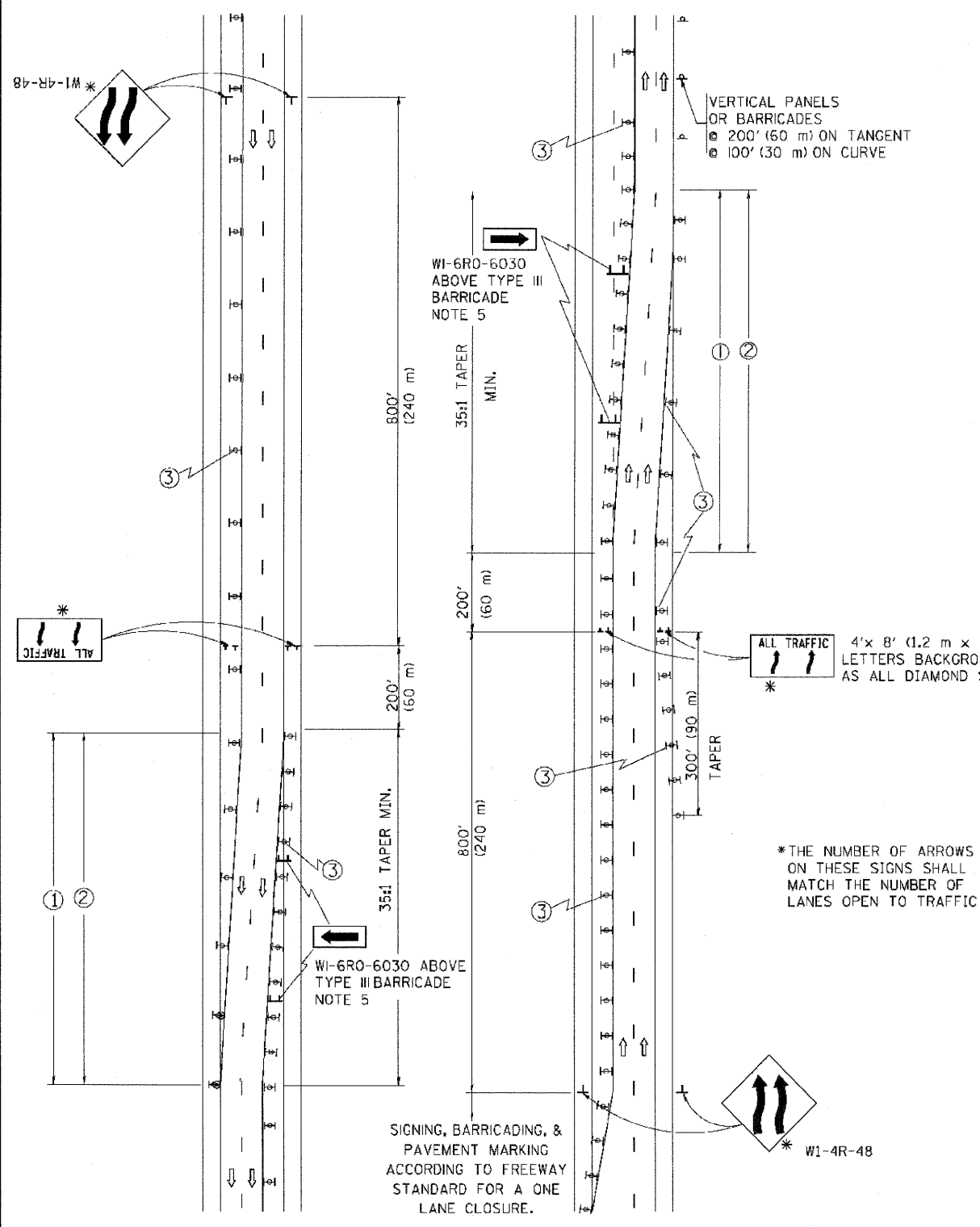


F.A.I. RTE.	SECTION	COUNTY	TOTAL SHEETS	SHEET NO.
STA.	TO STA.			
FED. ROAD DIST. NO.	ILLINOIS FED. AID PROJECT			

### SINGLE LANE WEAVE



### MULTI-LANE WEAVE



**GENERAL NOTES**

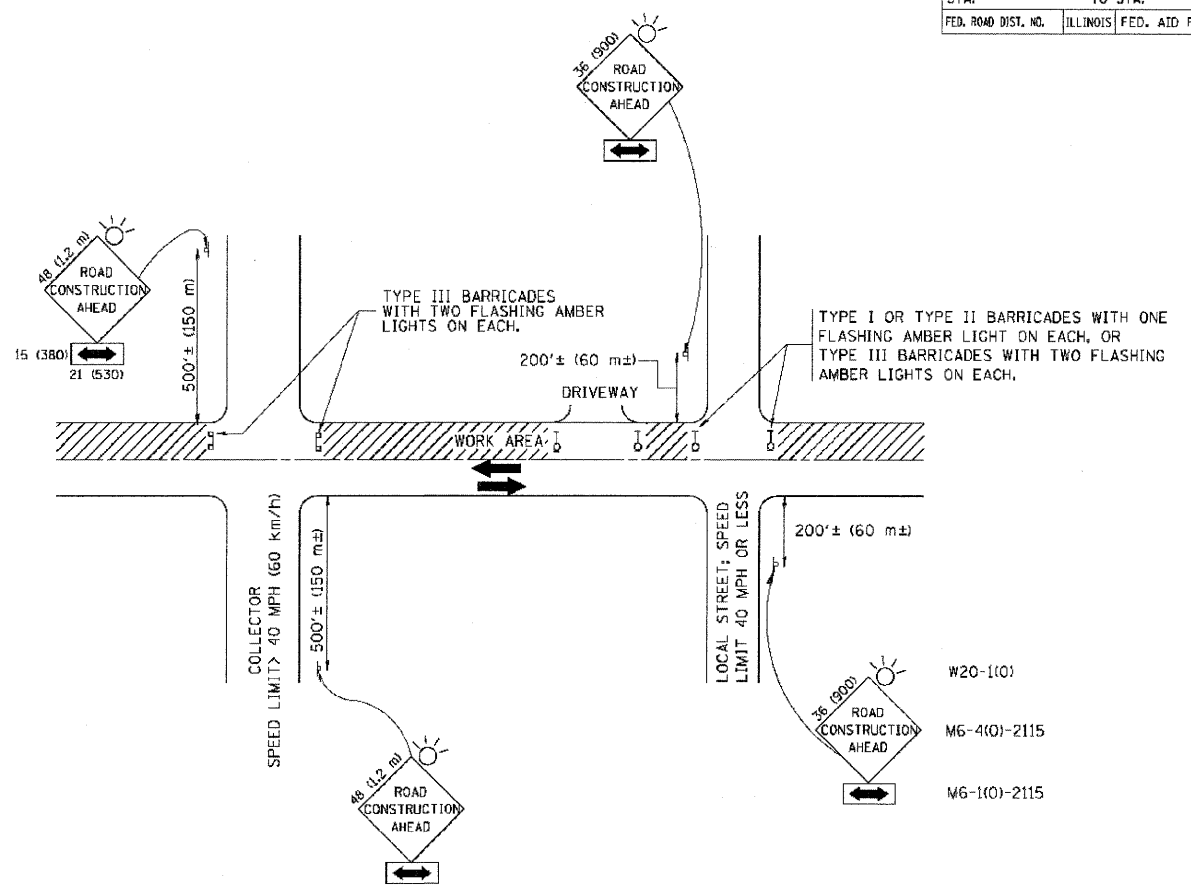
- EXISTING CONFLICTING PAVEMENT MARKING LINES SHALL BE REMOVED OR COVERED WITH BLACK TAPE. PAVEMENT MARKING REMOVAL OR BLACK TAPE SHALL NOT BE REQUIRED FOR LANE CLOSURES UNDER 24 HOURS IN DURATION.
- CONTINUOUS REFLECTIVE TEMPORARY PAVEMENT MARKING TAPE SHALL BE PLACED THROUGHOUT THE TAPER AND FOR 300' (90 m) ALONG SIDE THE WORK AREA WHERE THE CLOSURE TIME IS GREATER THAN FOURTEEN DAYS. THE LEFT EDGE LINE SHALL BE YELLOW AND THE RIGHT EDGE LINE SHALL BE WHITE. FOR MULTI-LANE WEAVE LANE LINES SHALL BE 10'-30' (3 m-9 m) SKIP DASH, WHITE.
- PLASTIC DRUMS WITH STEADY BURN LIGHTS AT 50' (15 m) C-C SPACING IN TAPERS AND 100' (30 m) C-C SPACING IN TANGENTS.
- ALL SIGNS SHALL BE POST MOUNTED IF THE CLOSURE TIME EXCEEDS FOUR DAYS.
- IF A TYPE III BARRICADE WITH AN ATTACHED SIGN PANEL WHICH MEETS NCHRP 350 IS NOT AVAILABLE, THE SIGNS MAY BE MOUNTED ON NCHRP 350 TEMPORARY SIGN SUPPORTS DIRECTLY IN FRONT OF THE BARRICADE.
- IF THE WIDTH OF OFFSET IS LESS THAN 6' THEN THE TYPE III BARRICADE WITH ATTACHED ARROW SIGN PANEL CAN BE ELIMINATED IN THE TAPER AREAS.

**SYMBOLS**

- DIRECTION OF TRAFFIC
- WORK AREA
- SIGN ON PORTABLE OR PERMANENT SUPPORT
- TYPE II BARRICADE, DRUM OR VERTICAL BARRICADE WITH MONO-DIRECTIONAL STEADY BURNING LIGHT

ALL DIMENSIONS ARE IN INCHES (MILLIMETERS) UNLESS OTHERWISE SHOWN

REVISIONS		ILLINOIS DEPARTMENT OF TRANSPORTATION TRAFFIC CONTROL DETAILS FOR FREEWAY SINGLE & MULTI-LANE WEAVE
NAME	DATE	
DWS	2/87	SCALE: NONE DRAWN BY R.H. CHECKED BY TC-9
DWS	1/90	
DWS	12/21/94	
DWS	11/96	
JAF	4/03	
JAF	2/06	
SPB	1/07	



TRAFFIC CONTROL AND PROTECTION FOR SIDE ROADS, INTERSECTIONS, AND DRIVEWAYS

NOTES:

- A. FOR NO LANE RESTRICTION ON THE SIDE ROAD OR DRIVEWAYS**
- SIDE ROAD WITH A SPEED LIMIT OF 40 MPH (60 km/h) OR LESS AS SHOWN ON THE DRAWING AND AS DIRECTED BY THE ENGINEER:
    - a) ONE ROAD CONSTRUCTION AHEAD SIGN 36 x 36 (900x900) WITH A FLASHER AND FLAG MOUNTED ON IT APPROXIMATELY 200' (60 m) IN ADVANCE OF THE MAIN ROUTE.
    - b) THE CLOSED PORTION OF THE MAIN ROUTE SHALL BE PROTECTED BY BLOCKING WITH TYPE I, TYPE II OR TYPE III BARRICADES, 1/3 OF THE CROSS SECTION OF THE CLOSED PORTION.
  - SIDE ROAD WITH A SPEED LIMIT GREATER THAN 40 MPH (60 km/h) AS SHOWN ON THE DRAWING AND AS DIRECTED BY THE ENGINEER:
    - a) ONE ROAD CONSTRUCTION AHEAD SIGN 48 x 48 (1.2 m x 1.2 m) WITH A FLASHER MOUNTED ON IT APPROXIMATELY 500' (150 m) IN ADVANCE OF THE MAIN ROUTE.
    - b) THE CLOSED PORTION OF THE MAIN ROUTE SHALL BE PROTECTED BY BLOCKING WITH TYPE III BARRICADES, 1/2 OF THE CROSS SECTION OF THE CLOSED PORTION.
- B. FOR A LANE CLOSURE ON A SIDE ROAD OR DRIVEWAY:**
- USE APPLICABLE PORTIONS OF THE TYPICAL APPLICATION OF TRAFFIC CONTROL DEVICES (STD. 701501, STD. 701606 OR THE APPROPRIATE STANDARD). THE SPACING OF SIGNS AND BARRICADES SHALL BE ADJUSTED FOR FIELD CONDITIONS AS DIRECTED BY THE ENGINEER. THE DIRECTIONAL ARROW SHALL BE COVERED OR REMOVED WHEN NO LONGER CONSISTENT WITH THE SIDE ROAD LANE CLOSURE.
- C. ADVANCE WARNING SIGNS ARE TO BE OMITTED ON DRIVEWAY UNLESS OTHERWISE NOTED.**
- D. THE TRAFFIC CONTROL AND PROTECTION FOR SIDE ROADS, INTERSECTIONS, AND DRIVEWAYS SHALL BE INCIDENTAL TO THE COST OF SPECIFIED TRAFFIC CONTROL STANDARDS OR ITEMS.**

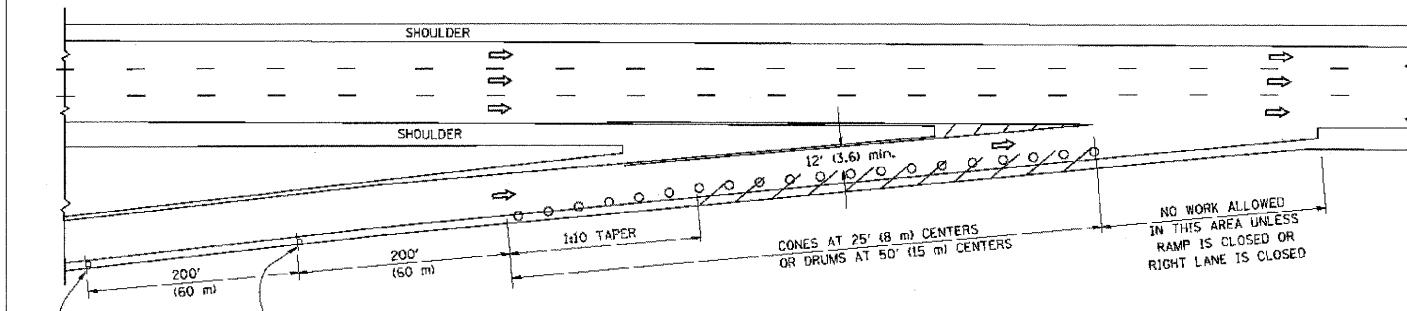
All dimensions are in millimeters (inches) unless otherwise shown.

REVISIONS	
NAME	DATE
LHA	6/89
T. RAMMACHER	09/08/94
J. OBERLE	10/18/95
A. HOUSEH	03/06/96
A. HOUSEH	10/15/96
T. RAMMACHER	01/06/00

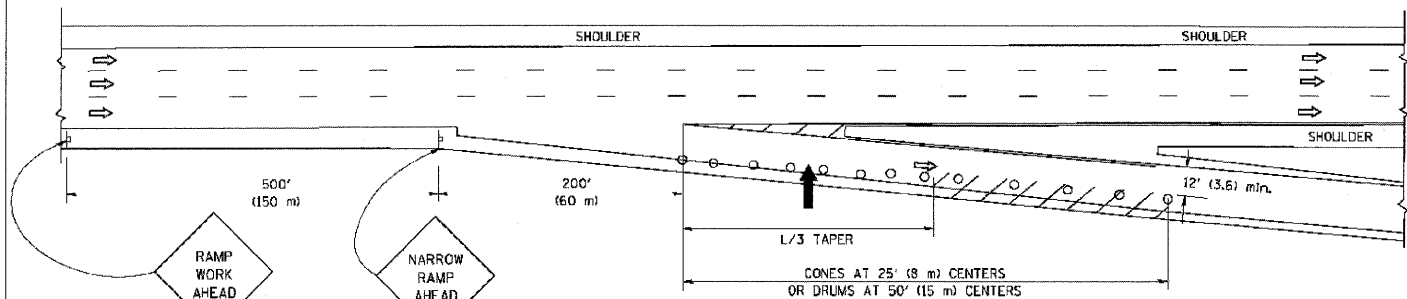
ILLINOIS DEPARTMENT OF TRANSPORTATION  
 TRAFFIC CONTROL AND PROTECTION FOR  
 SIDE ROADS, INTERSECTIONS, AND  
 DRIVEWAYS

SCALE: NONE  
 DRAWN BY  
 CHECKED BY  
 TC-10

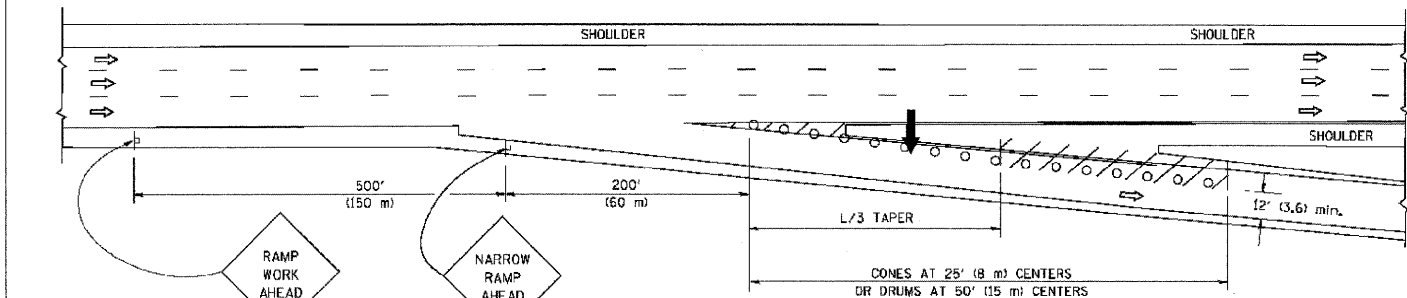
PARTIAL RAMP CLOSURE DETAILS



TYPICAL ENTRANCE RAMP



TYPICAL EXIT RAMP



TYPICAL EXIT RAMP

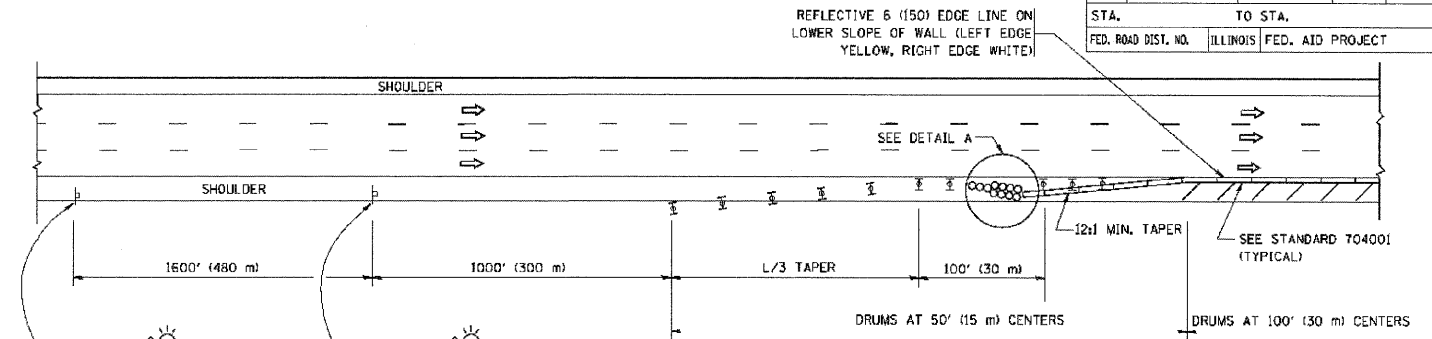
SYMBOLS

- ➔ ARROWBOARD
- ▨ WORK AREA
- ⊥ SIGN ON PORTABLE OR PERMANENT SUPPORT
- FLAGGER WITH CONTROL SIGN
- ⊥ TYPE II BARRICADE, DRUM OR VERTICAL BARRICADE WITH STEADY BURN MONO-DIRECTIONAL LIGHT
- CONE, DRUM OR BARRICADE

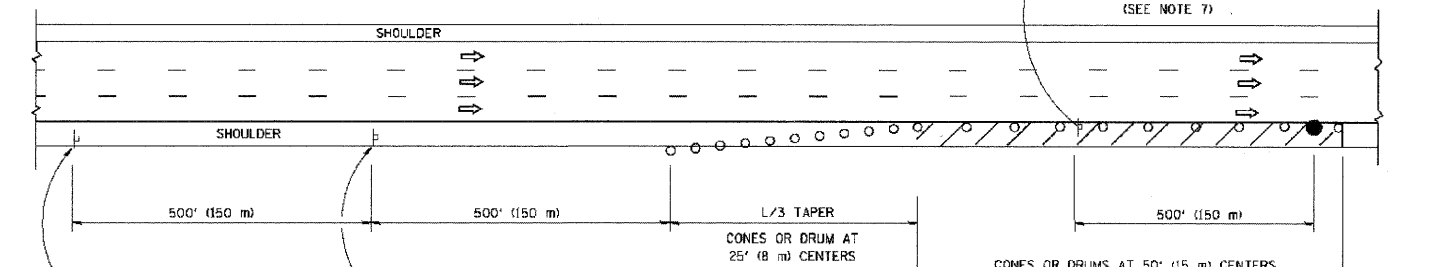
GENERAL NOTES

1. THE "L" DISTANCE EQUALS:  
SPEED LIMIT FORMULAS  
45 mph (80 km/h) METRIC ENGLISH  
OR GREATER: L=0.65(W/S) L=(W/S)  
W = WIDTH OF OFFSET IN FEET (METERS)  
S = NORMAL POSTED SPEED MPH (KM/H)
2. PLASTIC DRUMS WITH HIGH PERFORMANCE REFLECTIVE SHEETING AND STEADY BURNING LIGHTS ARE REQUIRED FOR ALL NIGHTTIME CLOSURES.
3. ALL SIGNS SHALL BE POST MOUNTED IF THE CLOSURE TIME EXCEEDS FOUR DAYS.
4. FLASHING LIGHTS SHALL BE USED DURING THE HOURS OF DARKNESS AND SHALL BE INSTALLED ABOVE THE FIRST TWO SETS OF SIGNS.

SHOULDER CLOSURE DETAILS

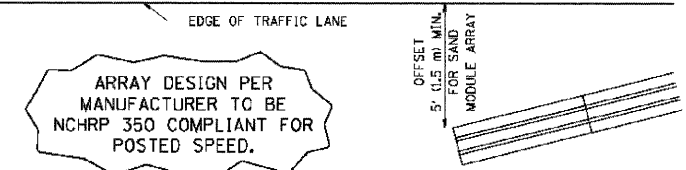


PERMANENT SHOULDER CLOSURE



DAYTIME SHOULDER CLOSURE

THIS DETAIL IS USED WHERE:  
1. VEHICLES, EQUIPMENT, WORKERS OR THEIR ACTIVITIES ENCRDACH IN AN AREA CLOSER THAN 15' (4.5 m) TO THE EDGE OF PAVEMENT FOR A PERIOD IN EXCESS OF 15 MINUTES.

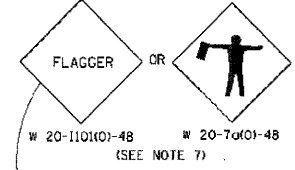
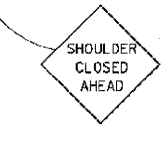
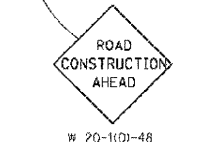
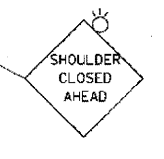
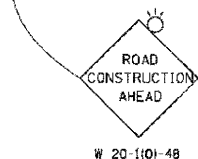


DETAIL "A" IMPACT ATTENUATOR, TEMPORARY (SEE NOTE 5)

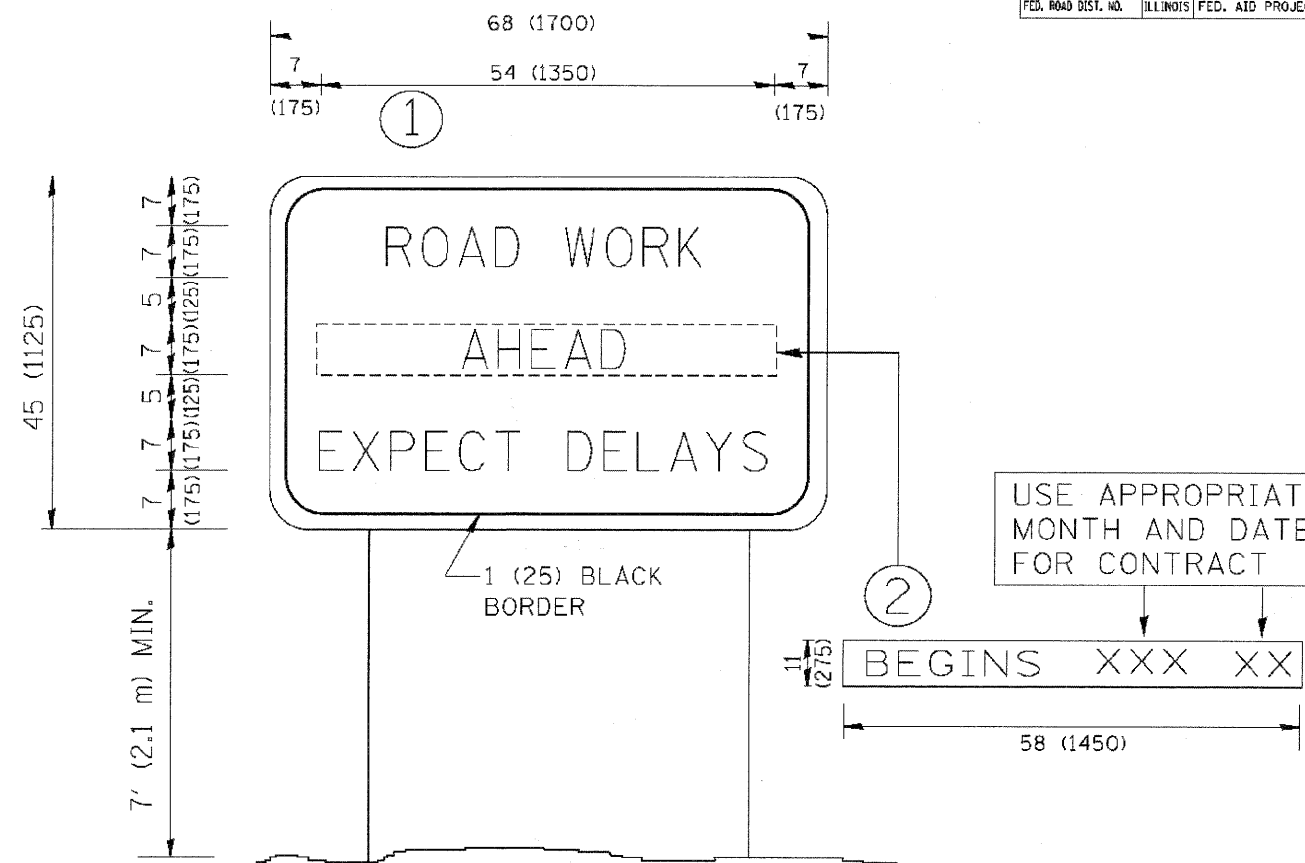
ALL DIMENSIONS ARE IN INCHES (MILLIMETERS) UNLESS OTHERWISE SHOWN.

REVISIONS	
NAME	DATE
DWS	11/96
JAF	12/02
NCHRP 350	04/03
JAF	2/06
SPB	1/07

ILLINOIS DEPARTMENT OF TRANSPORTATION  
TRAFFIC CONTROL DETAILS FOR FREEWAY SHOULDER CLOSURES PARTIAL RAMP CLOSURES  
DESIGNED BY: DWS  
DRAWN BY:  
CHECKED BY:  
SCALE: NONE  
TC-17



CONTRACT NO.				
F.A. RTE.	SECTION	COUNTY	TOTAL SHEETS	SHEET NO.
STA.	TO STA.			
FED. ROAD DIST. NO.	ILLINOIS	FED. AID PROJECT		



**NOTES:**

1. USE BLACK LETTERING ON ORANGE BACKGROUND.
2. ERECT SIGNS IN ADVANCE OF THE LOCATION FOR THE "ROAD CONSTRUCTION AHEAD" SIGN AT LOCATIONS AS DIRECTED BY THE ENGINEER.
3. ERECT SIGN ① WITH INSTALLED PANEL ② ONE WEEK PRIOR TO THE START OF CONSTRUCTION.
4. REMOVE PANEL ② SOON AFTER THE START OF CONSTRUCTION.
5. SEE SPECIAL PROVISION FOR "TEMPORARY INFORMATION SIGNING" FOR ADDITIONAL INFORMATION.
6. ONE SIGN ASSEMBLY EQUALS 25.70 SQ. FT. (2.3 SQ. M.)
7. SHALL BE PAID FOR AS TEMPORARY INFORMATION SIGNING.

ALL DIMENSIONS ARE IN INCHES (MILLIMETERS) UNLESS OTHERWISE SHOWN.

REVISIONS	
NAME	DATE
R. MIRS	9-15-97
R. MIRS	12-11-97
T. RAMMACHER	2-2-99
C. JUCIUS	1-31-07

ILLINOIS DEPARTMENT OF TRANSPORTATION

ARTERIAL ROAD INFORMATION SIGN

SCALE: NONE

DRAWN BY DESIGN  
CHECKED BY  
TC22

FILE NAME #  
#FILEL#



DESIGNED - VEA	REVISED -
DRAWN - VEA	REVISED -
CHECKED - TWL	REVISED -
DATE - 1/29/2010	REVISED -

STATE OF ILLINOIS  
DEPARTMENT OF TRANSPORTATION

DISTRICT ONE STANDARD DETAILS  
TC-22

SCALE: SHEET NO. OF SHEETS STA. TO STA.

F.A. RTE.	SECTION	COUNTY	TOTAL SHEETS	SHEET NO.
94	0101 15-1	COOK	20	20
CONTRACT NO. 60J29			ILLINOIS FED. AID PROJECT	