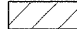


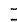
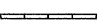



**LEGEND:**

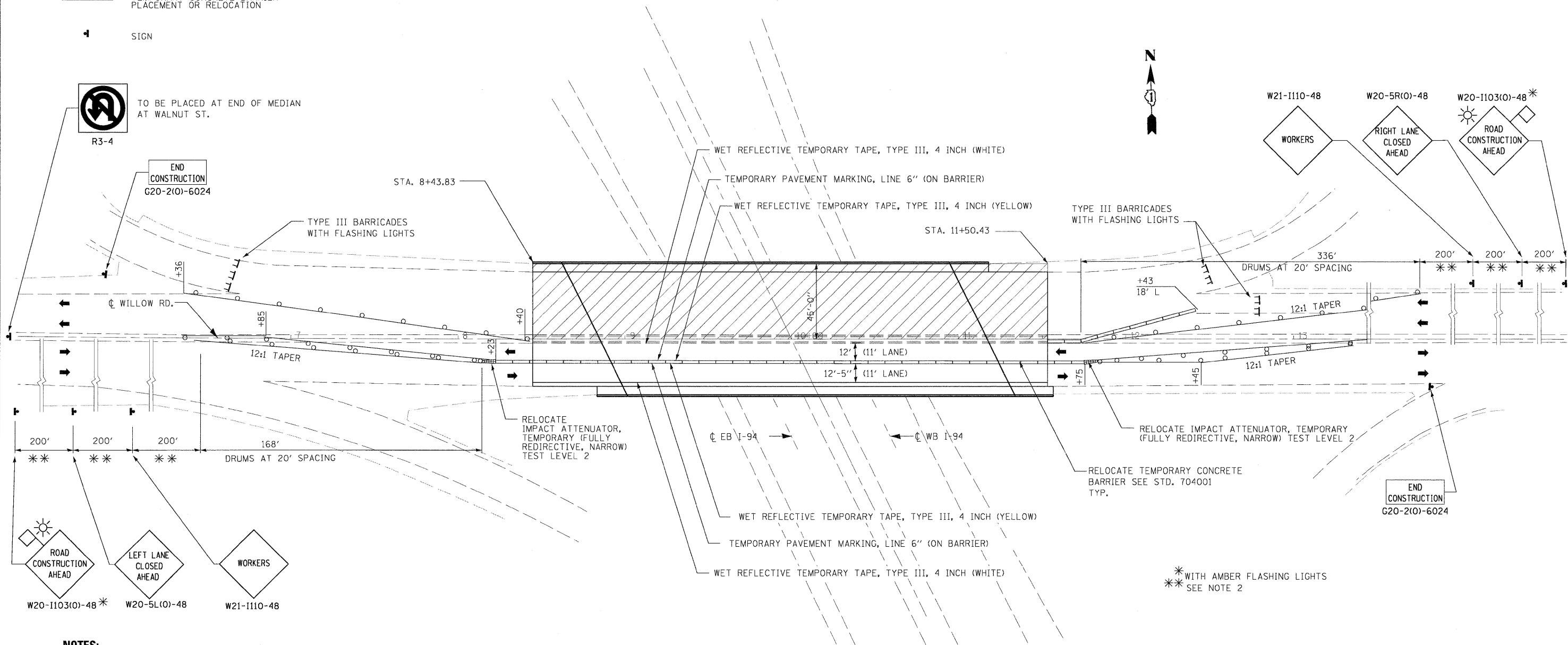
-  WORK ZONE
-  TRAFFIC ARROW
-  TYPE II BARRICADES, DRUMS, OR VERTICAL PANEL W/ STEADY BURNING MONODIRECTIONAL LIGHT
-  TYPE III BARRICADE
-  TEMPORARY CONCRETE BARRIER PLACEMENT OR RELOCATION
-  SIGN



TO BE PLACED AT END OF MEDIAN AT WALNUT ST.

R3-4

END CONSTRUCTION  
G20-2(0)-6024



\* WITH AMBER FLASHING LIGHTS  
\*\* SEE NOTE 2

**NOTES:**

1. MAINTENANCE OF TRAFFIC TO BE PAID FOR AS "TRAFFIC CONTROL AND PROTECTION".
2. CONTRACTOR TO PLACE SIGNS AS DIRECTED BY ENGINEER.
3. WORK ZONE ENTRANCES AND EXITS TO BE DETERMINED IN THE FIELD BY THE ENGINEER.
4. SEE STAGE CONSTRUCTION DETAILS IN STRUCTURAL PLANS FOR ADDITIONAL INFORMATION.
5. SEE SHEETS 2, 4, AND 5 FOR STAGE 2 WORK RESTRICTIONS AND DETOUR INFORMATION.

**PLAN - STAGE 2**

FILE NAME #	DESIGNED - EJA	REVISED -
	DRAWN - EJA	REVISED -
USER NAME #	CHECKED - AJP	REVISED -
PLOT DATE # 03\22\2010	DATE - 3/19/10	REVISED -

**benesch**

**STATE OF ILLINOIS  
DEPARTMENT OF TRANSPORTATION**

**WILLOW ROAD  
MAINTENANCE OF TRAFFIC PLAN  
STAGE 2**

SCALE: 1"=30' SHEET NO. 2 OF 2 SHEETS STA. TO STA.

F.A.I. RTE. #	SECTION	COUNTY	TOTAL SHEETS	SHEET NO.
94	1010.1-1-2	COOK	37	7
FED. ROAD DIST. NO.			ILLINOIS FED. AID PROJECT	
			CONTRACT NO. 60J30	