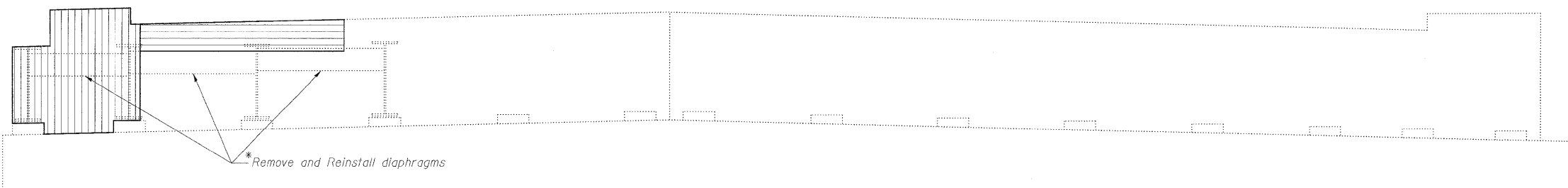
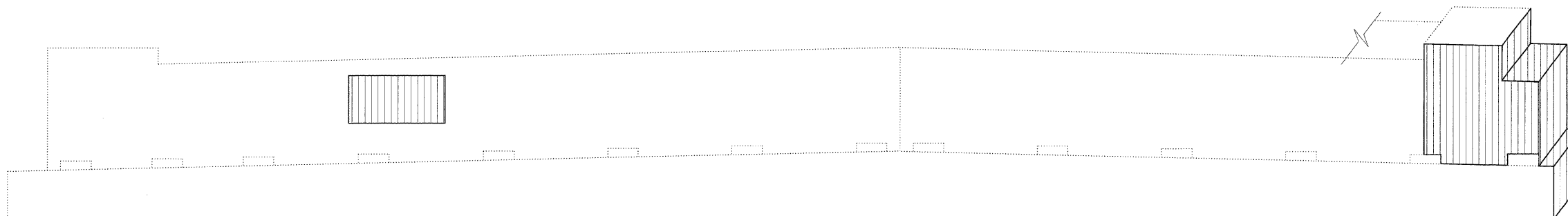


STATE OF ILLINOIS  
DEPARTMENT OF TRANSPORTATION



\*Contractor shall remove and reinstall the existing diaphragm members as necessary to complete the required concrete repairs. Cost included with Structural Repair of Concrete (Depth Greater Than 5 Inches).

WEST ABUTMENT REPAIRS



EAST ABUTMENT REPAIRS

BILL OF MATERIAL

SYMBOL	ITEM	UNIT	QUANTITY
	Structural Repair of Concrete (Depth Equal to or Less Than 5 Inches)	Sq. Ft.	96
	Structural Repair of Concrete (Depth Greater Than 5 Inches)	Sq. Ft.	18
	Concrete Sealer	Sq. Ft.	947

Notes:

1. Substructure repair areas are estimated based on IDOT field notes from October of 2009. Actual repair areas and locations shall be determined by the Engineer and shown on As-Built plans.
2. Apply Concrete Sealer to abutment seats and backwalls.
3. Wingwalls not shown for clarity.

DESIGNED -	JLS
CHECKED -	KWS
DRAWN -	RMG
CHECKED -	KWS

**benesch**

alfred benesch & company  
Engineers • Surveyors • Planners  
205 North Michigan Avenue, Suite 2400  
Chicago, Illinois 60601  
312-565-0450 Job No. 10032.13

SHEET NO. 9	F.A.I. RTE.	SECTION	COUNTY	TOTAL SHEETS	SHEET NO.
	94	1010.1-I-2	COOK	37	21
17 SHEETS			CONTRACT NO. 60J30		
FED. ROAD DIST. NO.		ILLINOIS FED. AID PROJECT			

SUBSTRUCTURE REPAIRS - ABUTMENTS  
STRUCTURE NO. 016-0536