

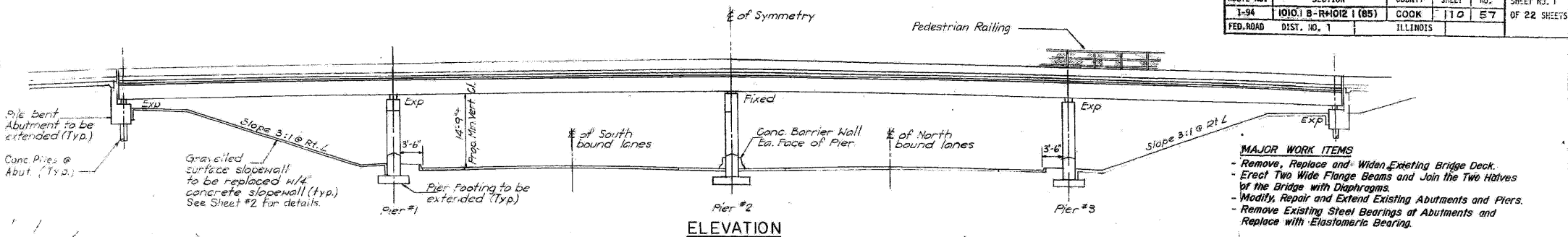
STATE OF ILLINOIS  
DEPARTMENT OF TRANSPORTATION

ROUTE NO.	SECTION	COUNTY	TOTAL SHEET	SHEET NO.	SHEET NO. 1
1-94	1010.1 B-R+1012 I (85)	COOK	110	57	OF 22 SHEETS
FED. ROAD	DIST. NO. 1	ILLINOIS			

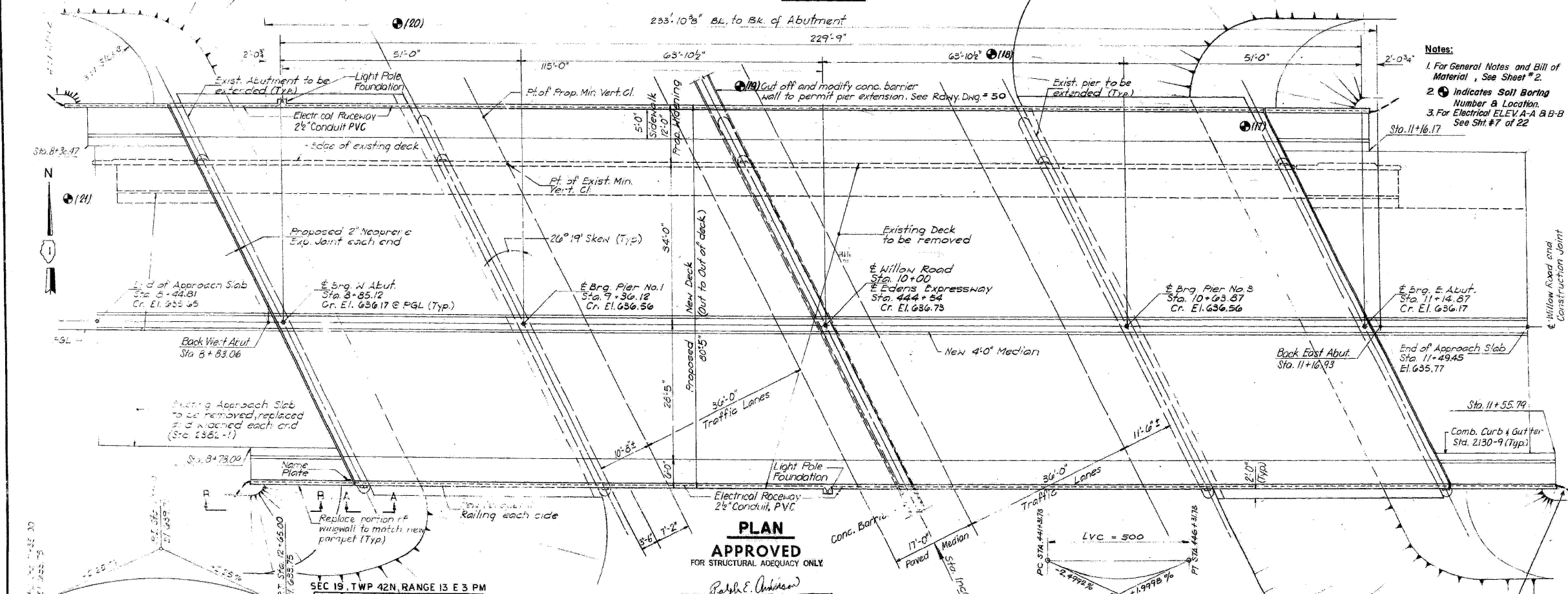
Bench Mark:  
El. 624.92  
SW corner of north end  
of east truss foundation,  
Sta. 439+80 (Edens Expy.)

**EXISTING STRUCTURE DATA**

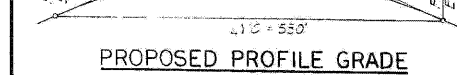
Structure No.: 016-0536  
Year Built: 1949  
Description: 4 span continuous  
wide flange beam structure  
Width: 65'-0" Out to Out of Deck  
Length: 229'-9" E. Brg. W. Abut. to  
E. Brg. E. Abut.



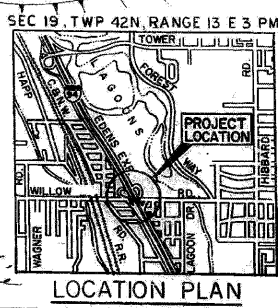
- MAJOR WORK ITEMS**
- Remove, Replace and Widen Existing Bridge Deck.
  - Erect Two Wide Flange Beams and Join the Two Halves of the Bridge with Diaphragms.
  - Modify, Repair and Extend Existing Abutments and Piers.
  - Remove Existing Steel Bearings at Abutments and Replace with Elastomeric Bearing.



- Notes:**
1. For General Notes and Bill of Material, See Sheet # 2.
  2. (2) indicates Soil Boring Number & Location.
  3. For Electrical ELEV. A-A & B-B See Sht. # 7 of 22.



DESIGNED	E.M.M.
CHECKED	J.M.N.
DRAWN	J.N.
CHECKED	E.M.M.



**Design Specifications:**  
1983 AASHTO and 1984 HPV  
1966 Interim Specifications.

**Design Stresses (Exist. Portion)**  
f<sub>c</sub> = 1200 psi (Concrete)  
f<sub>s</sub> = 20000 psi (Reinforcement)  
f<sub>s</sub> = 18000 psi (Structural Steel)

**Design Stresses (New Portion)**  
f<sub>c</sub> = 3500 psi (Concrete)  
f<sub>s</sub> = 40000 psi (Reinforcement)  
f<sub>s</sub> = 20000 psi (Structural Steel AASHTO M163)

Loading: HS 20-44  
No provision for future wearing surface.

STATION 444+54  
REBUILT 199 BY  
STATE OF ILLINOIS  
F.A. RTE. 99 SECTION 1010.1 B-R 1012 I (85)  
F.A. PROJECT  
LOADING HS20  
STRUCTURE NUMBER 016-0536

**NAME PLATE**  
STD. 2113

Note:  
Existing Name Plate to be cleaned  
and relocated. Cost Incidental

**EXISTING PROFILE GRADE FAI-94**  
El. given at PGL of Edge of  
Median for both S.B. & N.B. Lanes

**GENERAL PLAN & ELEVATION**

**WILLOW ROAD OVER EDENS EXPRESSWAY**  
F.A. RTE. 99 SECTION 1010.1 B-R+1012 I (85)  
STA. 10+00 WILLOW ROAD (F.A. RTE. 99)  
STA. 444+54 EDENS EXPRESSWAY (FAI-94)  
COOK COUNTY  
STRUCTURE NUMBER 016-0536

FOR INFORMATION ONLY

**benesch**

alfred benesch & company  
Engineers • Surveyors • Planners  
205 North Michigan Avenue, Suite 2400  
Chicago, Illinois 60601  
312-565-0450 Job No. 10032.13

SHEET NO. 12	F.A.I. RTE.	SECTION	COUNTY	TOTAL SHEETS	SHEET NO.
17 SHEETS	94	1010.1-I-2	COOK	37	24
FED. ROAD DIST. NO.			ILLINOIS	FED. AID PROJECT	
CONTRACT NO. 60J30					

EXISTING PLAN INFORMATION 1 OF 6  
STRUCTURE NO. 016-0536

x:\100000\10032\engineering\documents\_contract-60J30\N.016.0536.Willow.Rd\0536-60J30-012-ExistingPlan\_01.dgn 15:45:10 03/22/2010