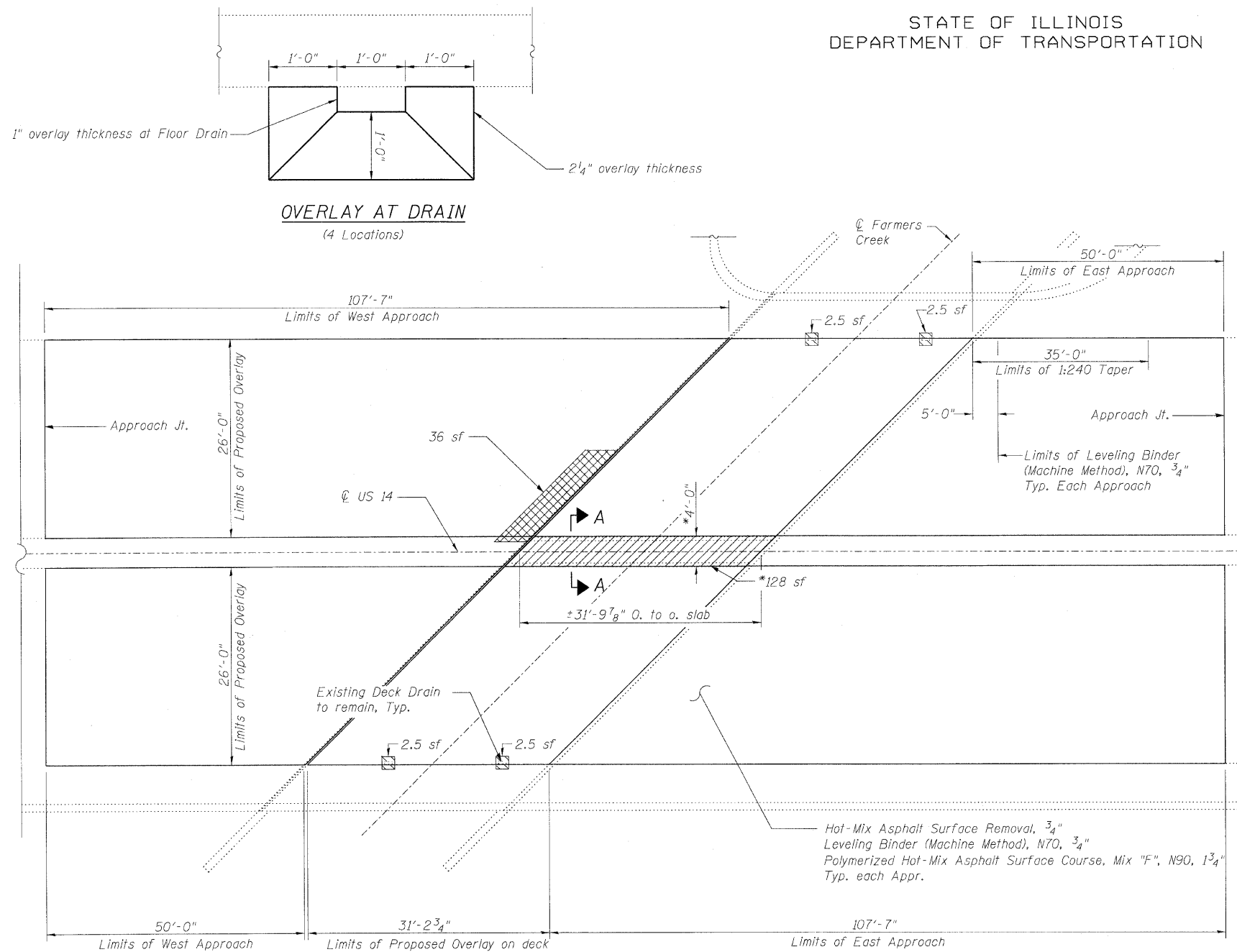


STATE OF ILLINOIS
DEPARTMENT OF TRANSPORTATION



LEGEND

- Deck Slab Repair (Full Depth, Type I)
- Deck Slab Repair (Full Depth, Type II)
- Approach Slab Repair (Partial Depth) (For Information Only)
- Concrete Removal
- sf Square Feet

BAR LIST

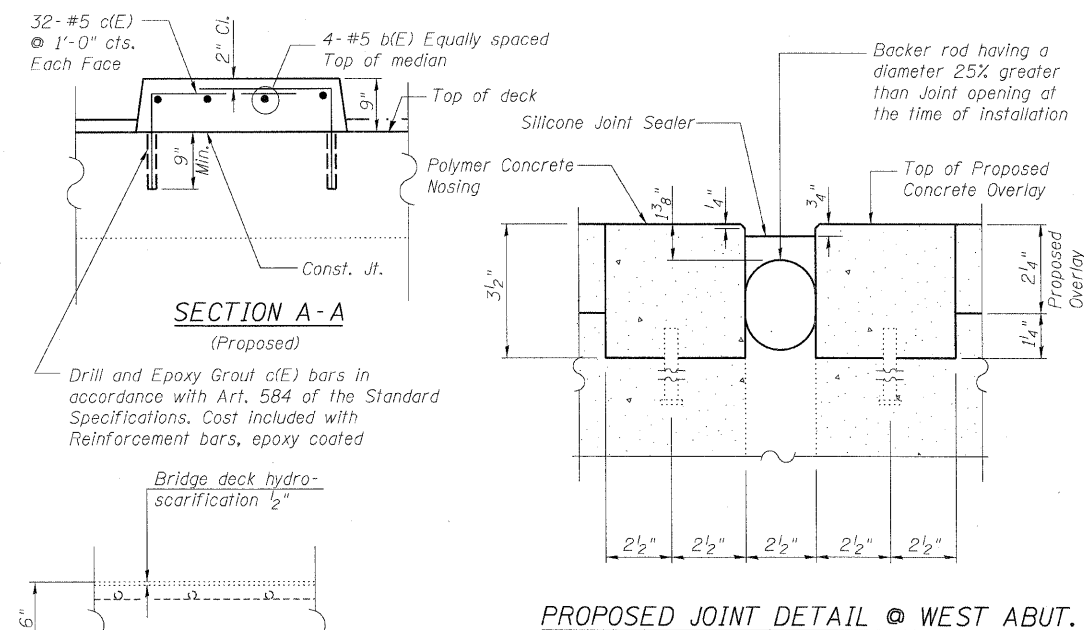
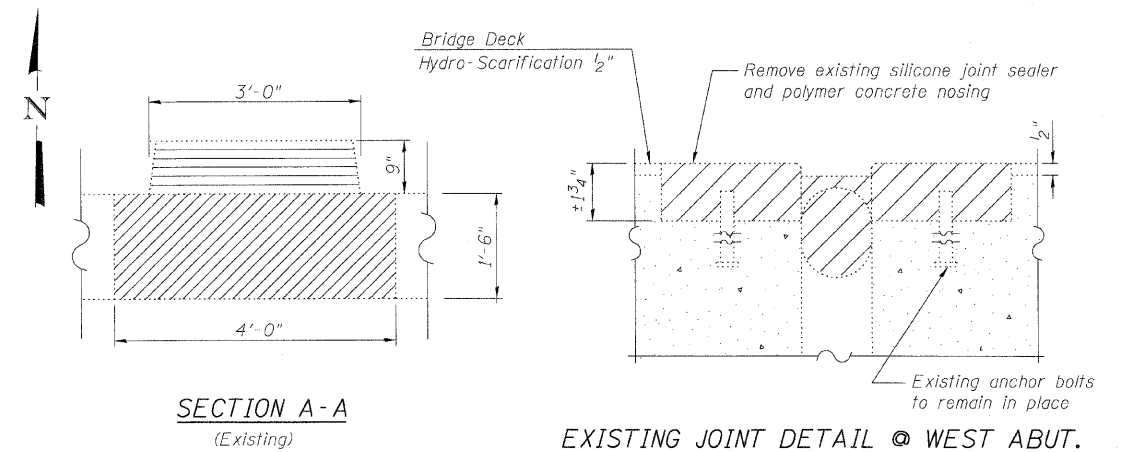
Bar	No.	Size	Length	Shape
d(E)	4	#5	31'-6"	—
c(E)	64	#5	3'-10"	┌

DECK PLAN

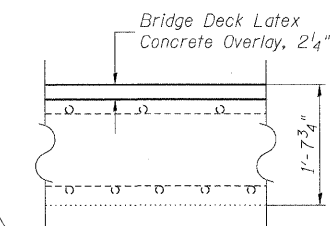
BILL OF MATERIAL

Item	Unit	Total
Silicone Joint Sealer, 2 1/2"	Foot	97
Deck Slab Repair (Full Depth, Type I)	Sq. Yd.	1.3
Deck Slab Repair (Full Depth, Type II)	Sq. Yd.	16.3
Bridge Deck Latex Concrete Overlay, 2 1/4"	Sq. Yd.	184
Bridge Deck Hydro-scarification 1/2"	Sq. Yd.	184
Hot-Mix Asphalt Surface Removal, 3/4"	Sq. Yd.	1112
Leveling Binder (Machine Method), N70, 3/4"	Tons	39
Polymerized Hot-Mix Asphalt Surface Course, Mix "F", N90, 1 3/4"	Tons	91
Concrete Superstructure	Cu. Yd.	2.7
Reinforcement Bars, Epoxy Coated	Pound	390
Polymer Concrete	Cu. Ft.	23.4
Concrete Removal	Cu. Yd.	2.7

** For Median



EXISTING BRIDGE DECK
CROSS SECTION



PROPOSED BRIDGE DECK
CROSS SECTION



Note:
Repair of the existing deck slab and approach slab shall include but may not be limited to the areas shown. The actual area to be repaired will be determined by the Engineer at the time of construction.
Contractor shall verify that the type of concrete selected shall achieve required strength within the time allotted for construction. See Special Provisions, Deck Slab (Special).
See Roadway plans for Approach Resurfacing Detail.
Provide 1:240 taper rate from 1 3/4" rise in bridge deck elevation down to existing profile grade. Thickness of surface course to be 1 3/4" and varies. Saw cuts shall be included in the cost for the HMA pay items.
Removal of median and full depth patching under the median shall be accomplished by methods that will not damage the existing gutter adjacent to the median. Any damage shall not be cause for additional compensation.
Cost of existing joint removal is included in the cost of silicone joint sealer.
* Perform Full depth repair in stages. Fast curing concrete mixes shall not be used for this patch. After new concrete is poured, work cannot begin in an adjacent section until both of the following requirements are met:
1. At least 72 hours shall have elapsed from the end of the previous pour on either end.
2. The new concrete on either end shall have obtained a modulus of rupture of 650 psi or a minimum compressive strength of 3,500 psi.

CONCRETE REMOVAL AND REPAIR
STRUCTURE NO. 016-1033

LIN ENGINEERING LTD. Consulting Engineers Chatham, Illinois	SHEET NO. 4	F.A.U RTE.	SECTION	COUNTY	TOTAL SHEETS	SHEET NO.
	5 SHEETS	1324	3014-1	COOK	19	12
		FED. ROAD DIST. NO. ILLINOIS		CONTRACT NO. 60J40		