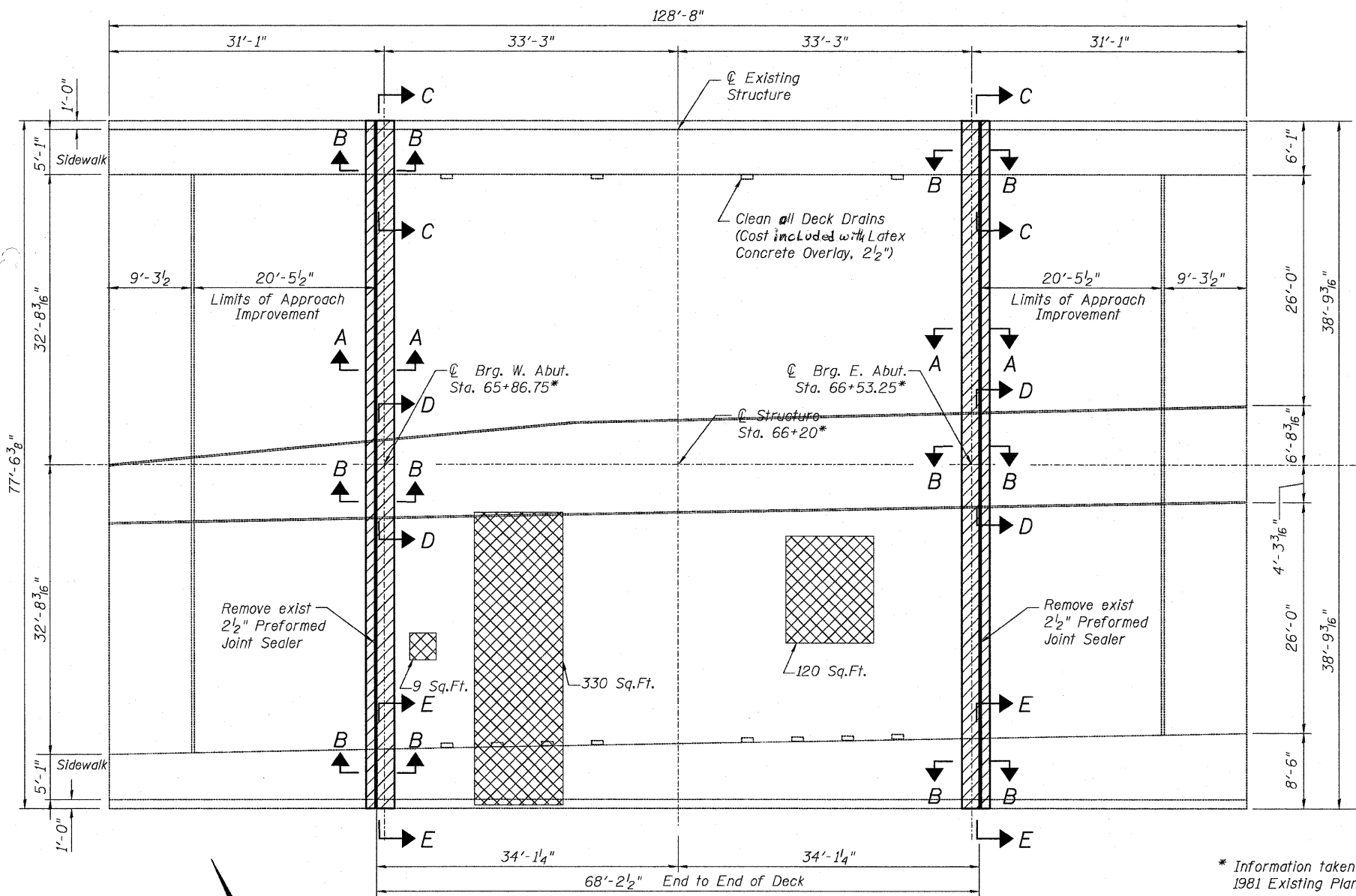
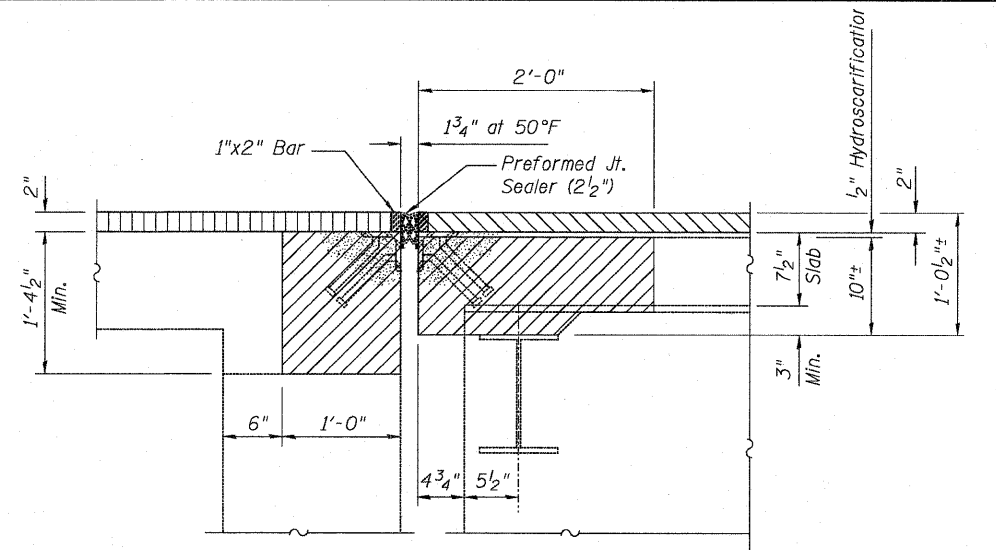


STATE OF ILLINOIS
DEPARTMENT OF TRANSPORTATION

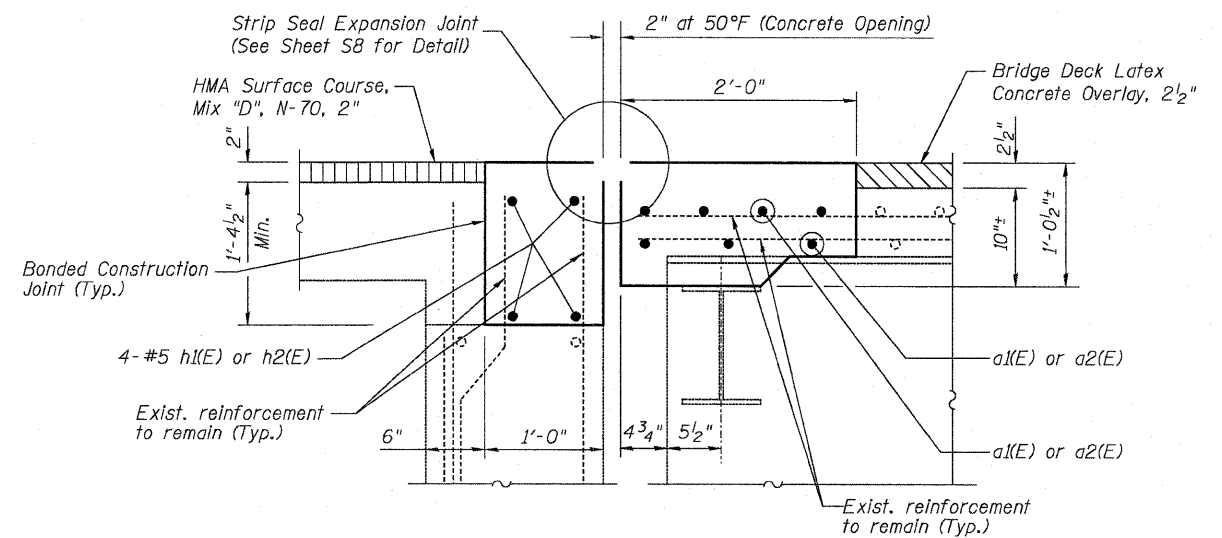


PLAN

* Information taken from 1981 Existing Plans



SECTION A-A
EXISTING



SECTION A-A
PROPOSED

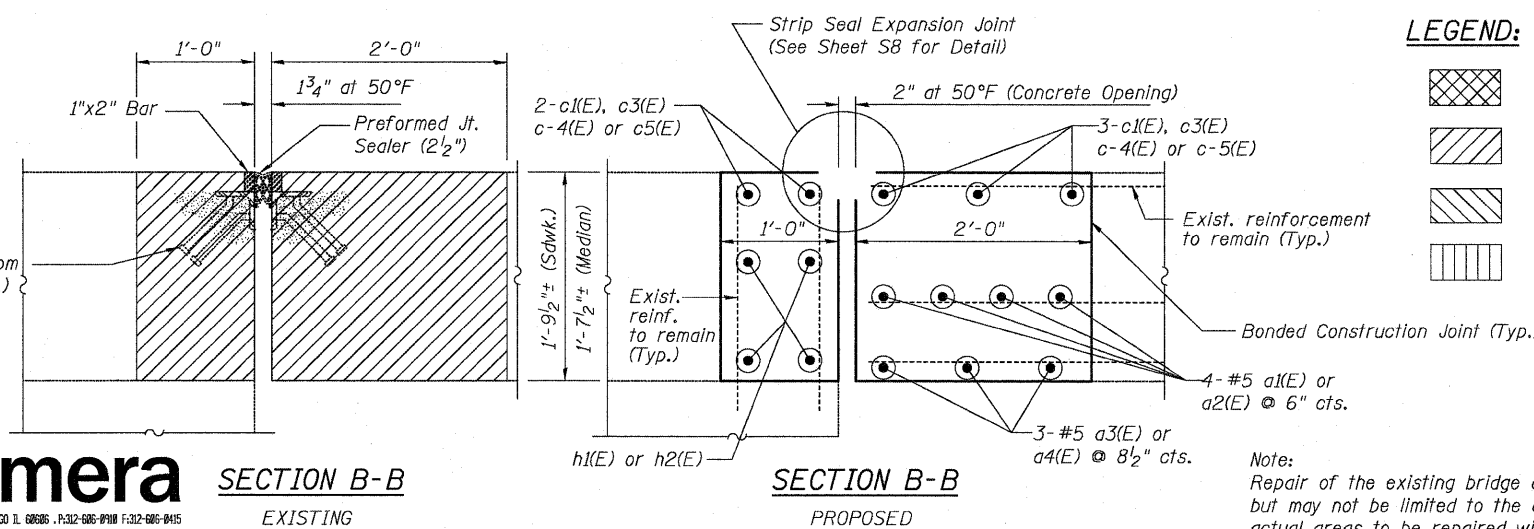
Note:
Existing reinforcing bars to remain shall be cleaned, straightened and incorporated into new concrete. Cost included with Concrete Removal.

BILL OF MATERIAL

ITEM	UNIT	QUANTITY
Deck Slab Repair (Full Depth Type II)	Sq. Yd.	51
Concrete Removal	Cu. Yd.	22
Concrete Superstructure	Cu. Yd.	25
Reinforcement Bars, Epoxy Coated	Pounds	2,280
Bar Splicers	Each	32

Note:
For Details of Section C-C, Section D-D, Section E-E, Bar List and Bar Bend Diagram, See Sheet S5.

BRIDGE DECK PATCHING PLAN &
EXPANSION JOINT RECONSTRUCTION DETAILS
STRUCTURE NO. 016-0928



SECTION B-B
EXISTING

SECTION B-B
PROPOSED

Note:
Repair of the existing bridge deck shall include but may not be limited to the areas shown. The actual areas to be repaired will be determined by the Engineer at the time of construction.

LEGEND:

- Deck Slab Repair (Full Depth Type II)
- Concrete Removal
- HMA Surface Removal (Deck) Bridge Deck Latex Concrete Overlay, 2 1/2"
- HMA Surface Removal, 2" HMA Surface Course, Mix "D", N-70, 2"

DESIGNED JPM
CHECKED TG
DRAWN MPS
CHECKED JPM, TG



SECTION B-B
EXISTING

SHEET NO. S4	F.A.P. RTE. 376	SECTION 2009-1161	COUNTY COOK	TOTAL SHEETS 23	SHEET NO. 11
SIX SHEETS			CONTRACT NO. 60J41		
ILLINOIS FED. AID PROJECT					