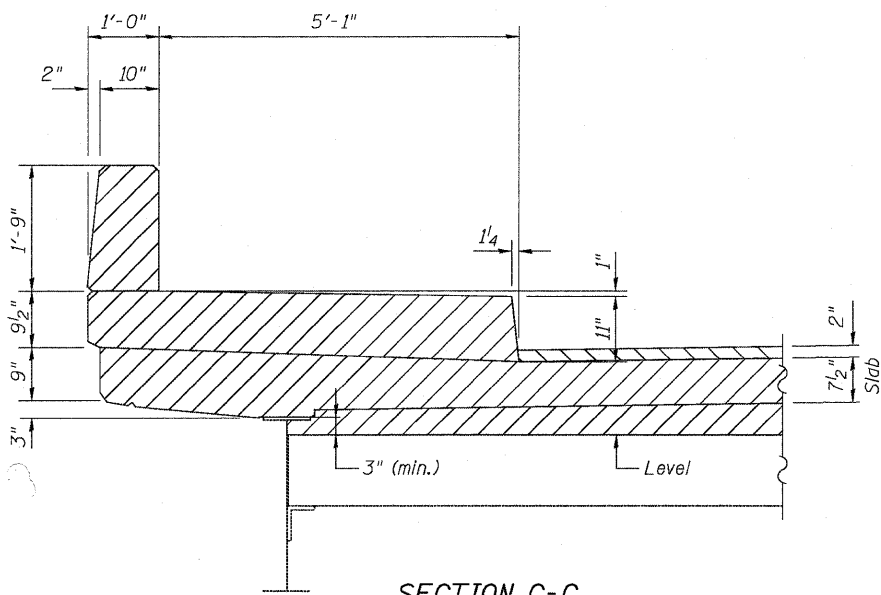
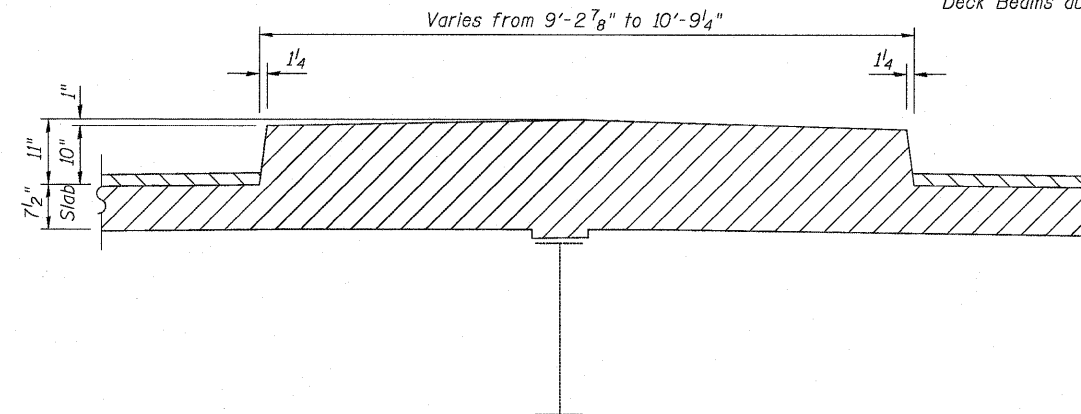


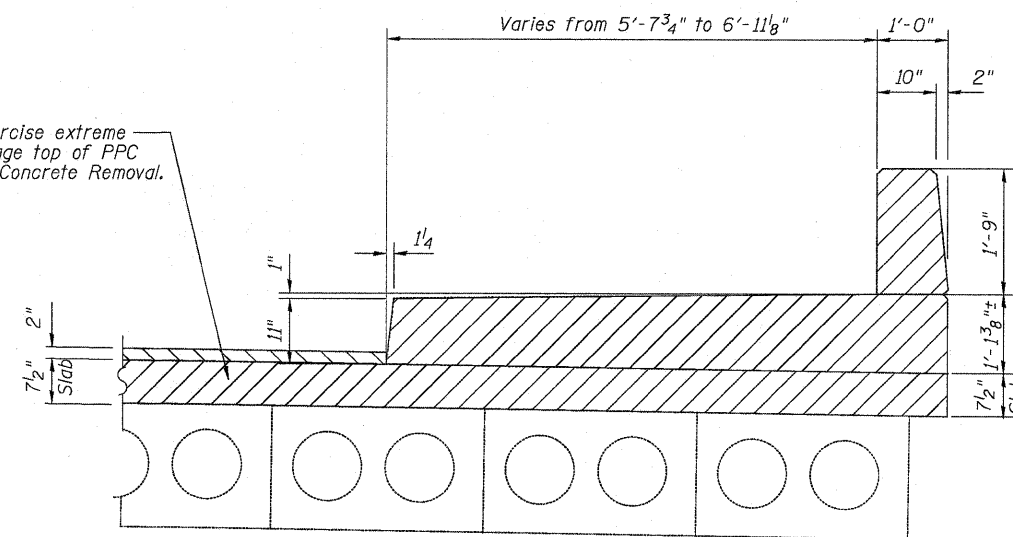
STATE OF ILLINOIS
DEPARTMENT OF TRANSPORTATION



SECTION C-C
EXISTING

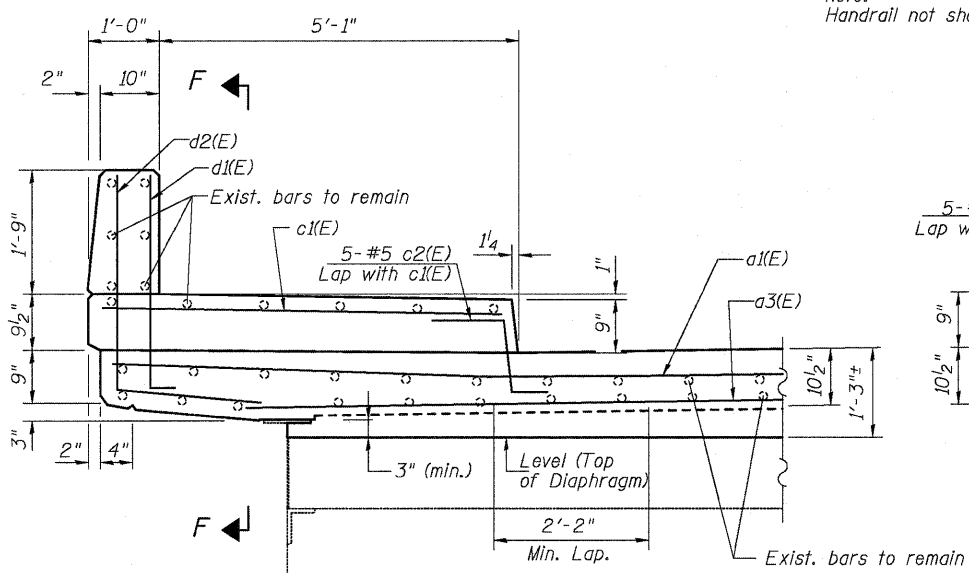


SECTION D-D
EXISTING

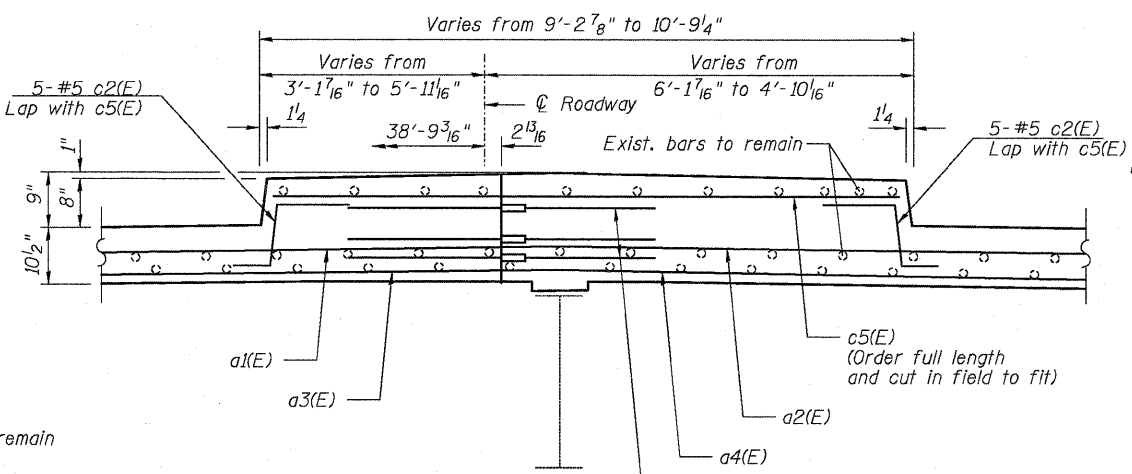


SECTION E-E
EXISTING

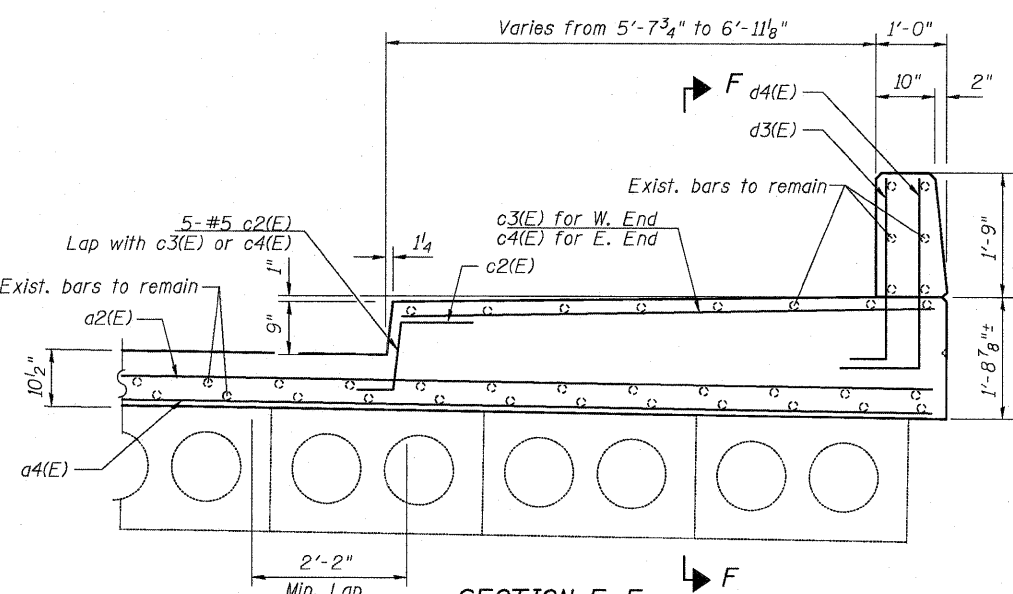
Note:
Handrail not shown.



SECTION C-C
PROPOSED



SECTION D-D
PROPOSED



SECTION E-E
PROPOSED

10 Bar Splicers for #5 Bars (Deck-ea. end)
6 Bar Splicers for #5 Bars (Backwall-ea. end)

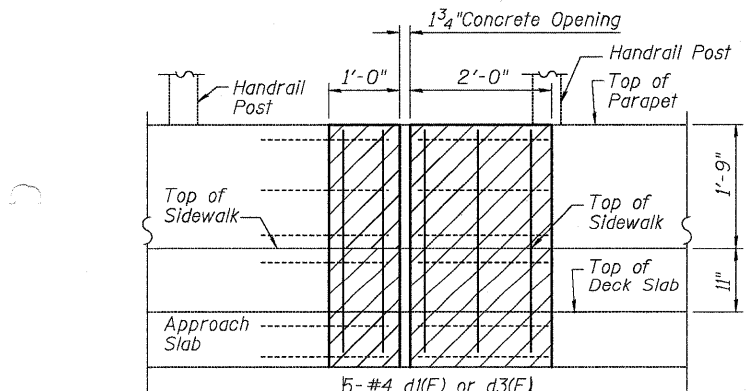
BAR LIST

Bar	No.	Size	Length	Shape
a1(E)	7	#5	37'-10"	—
a2(E)	7	#5	37'-4"	—
a3(E)	7	#5	36'-10"	—
a4(E)	7	#5	36'-4"	—
c1(E)	10	#5	5'-9"	—
c2(E)	40	#5	3'-0"	⌒
c3(E)	5	#5	6'-4"	—
c4(E)	5	#5	7'-7"	—
c5(E)	10	#5	10'-3"	—
d1(E)	10	#4	4'-1"	—
d2(E)	10	#6	5'-0"	—
d3(E)	10	#4	3'-11"	—
d4(E)	10	#6	3'-11"	—
h1(E)	8	#5	38'-10"	—
h2(E)	8	#5	38'-6"	—

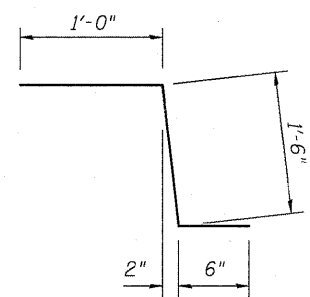
Note:
Existing reinforcing bars to remain shall be cleaned, straightened and incorporated into new concrete. Cost included with Concrete Removal.

LEGEND:

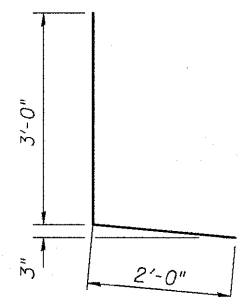
Indicates Concrete Removal



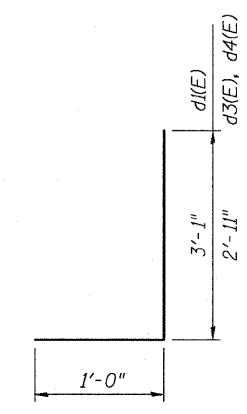
SECTION F-F



Bar c2(E)



Bar d2(E)



Bar d1(E), d3(E)
and d4(E)

DESIGNED JPM
CHECKED TG
DRAWN MPS
CHECKED JPM, TG

Primera
100 S. WACKER DRIVE SUITE 700 • CHICAGO IL 60606 • P:312-586-8918 F:312-586-8415

DECK DETAILS
STRUCTURE NO. 016-0928

SHEET NO. 55 OF 57 SHEETS	F.A.P. RTE. 376	SECTION 2009-1161	COUNTY COOK	TOTAL SHEETS 23	SHEET NO. 12
	CONTRACT NO. 60J41				
ILLINOIS FED. AID PROJECT					