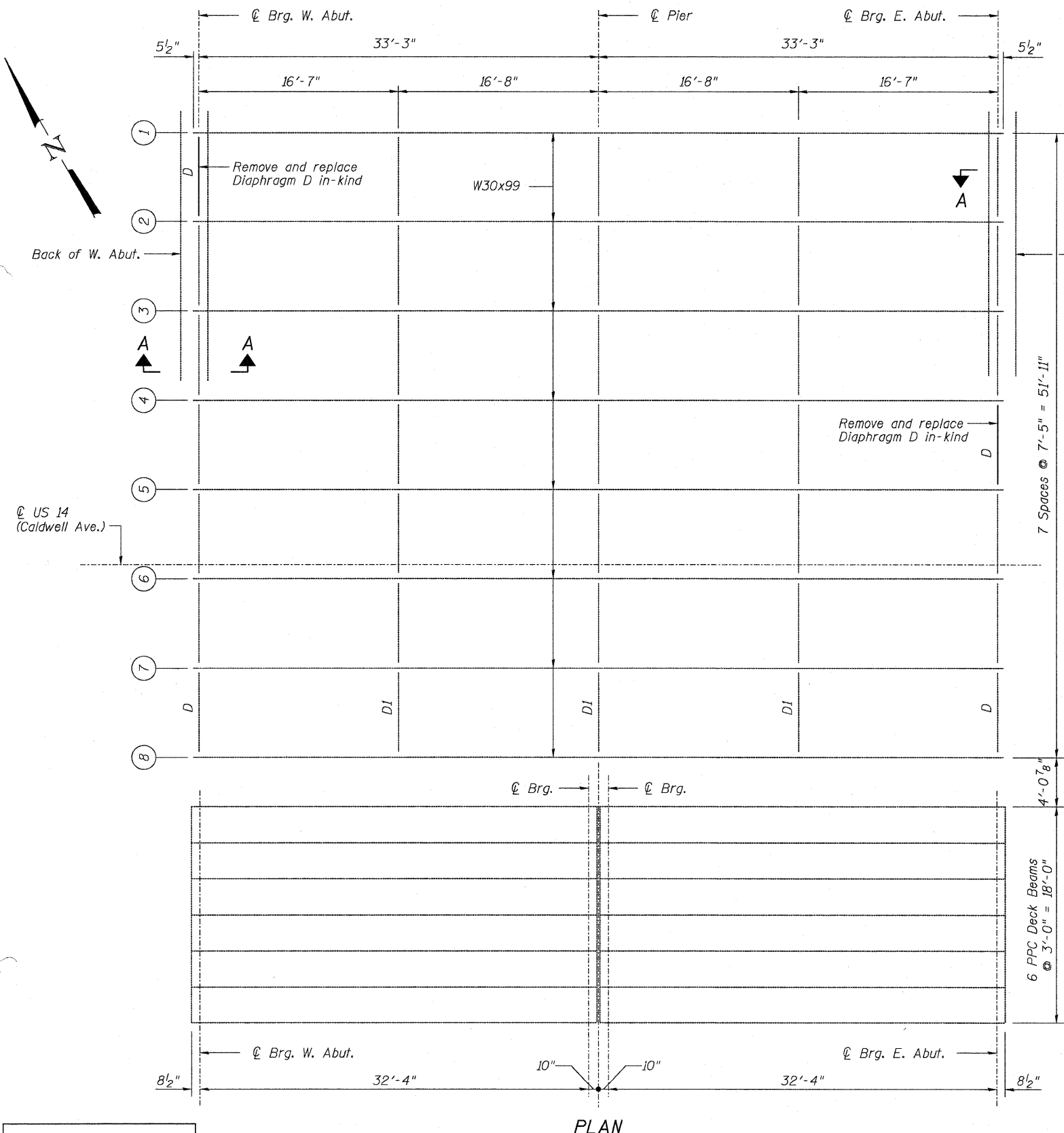
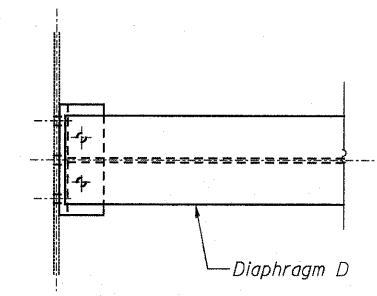


STATE OF ILLINOIS
DEPARTMENT OF TRANSPORTATION

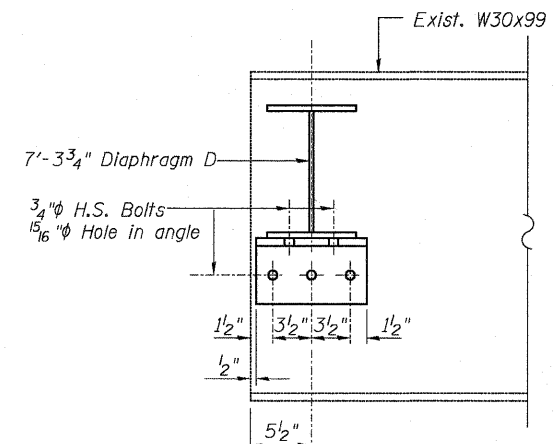


Note:
Existing angles are welded to the beam web.
Take extra care when removing the attached angles so as not to gouge the beam web. Grind the existing weld and the ground surfaces shall be inspected for cracks using magnetic particle testing prior to initiating field drilling of web and angle, that is attached on the other side of the web, for the new attachment. The cost of grinding and testing is incidental to "Structural Steel Removal". Any cracks that cannot be removed by grinding shall be identified and reported to the Bureau of Bridges and Structures for further disposition.

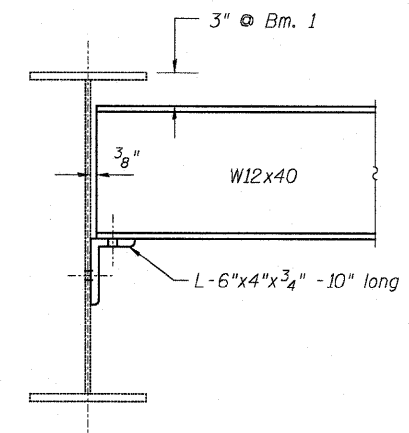
A (See Bearing Details, Sht. S-9 - Typ.)



PLAN



SECTION A-A



ELEVATION

END DIAPHRAGM D
EXISTING & PROPOSED
2 Required

Note:
Hardened washers shall be required over 15/16" diameter holes in angles.

BILL OF MATERIAL

ITEM	UNIT	QUANTITY
Furnishing and Erecting Structural Steel	Pounds	5,080 *
Structural Steel Removal	Pounds	660 **

* Includes Diaphragms, Angles, Fasteners, Bearing Extensions, and other steel member required for bearing assembly.

** Includes Diaphragms, Angles and Fasteners.

FRAMING PLAN & DIAPHRAGM DETAILS
STRUCTURE NO. 016-0928

DESIGNED	JPM
CHECKED	TG
DRAWN	MPS
CHECKED	JPM, TG



SHEET NO. S6	F.A.P. RTE.	SECTION	COUNTY	TOTAL SHEETS	SHEET NO.
	376	2009-116I	COOK	23	13
S11 SHEETS		CONTRACT NO. 60J41			
ILLINOIS FED. AID PROJECT					