

STATE OF ILLINOIS
DEPARTMENT OF TRANSPORTATION
DIVISION OF HIGHWAYS

**PROPOSED
HIGHWAY PLANS**

FAP 353 / US 30 AT BUTTERFIELD CREEK
BRIDGE DECK OVERLAY, JOINT REPAIR
SECTION 23R-B-1
PROJECT NO. NHF-0353 (016)
COOK COUNTY
C-91-233-10

FOR INDEX OF SHEETS, SEE SHEET NO. 2

TRAFFIC DATA:

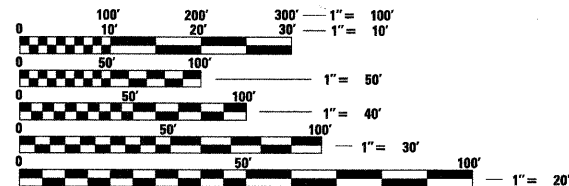
EXISTING ADT US 30 17500 (2007)
POSTED SPEED = 45 MPH

PROJECT LOCATION
US 30 (LINCOLN HWY)
OVER BUTTERFIELD CREEK
STRUCTURE NO. 016-0286

IMPROVEMENT ENDS
STA. 100 + 64.86

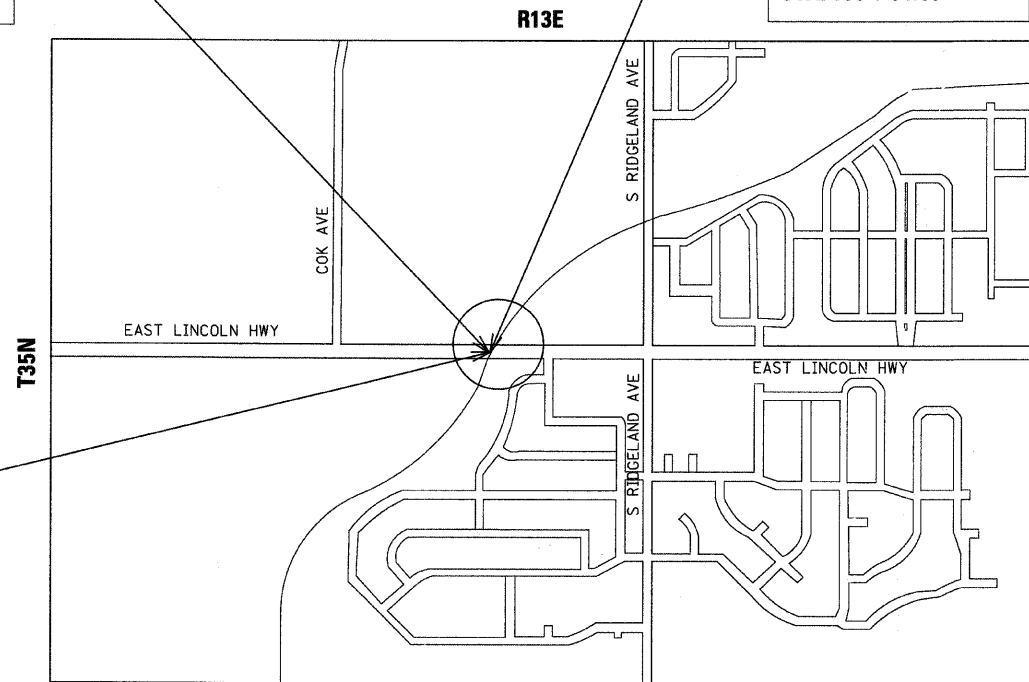
IMPROVEMENT BEGINS
STA. 99 + 99.14

PROJECT IS LOCATED IN THE
VILLAGE OF MATTESON



FULL SIZE PLANS HAVE BEEN PREPARED USING STANDARD
ENGINEERING SCALES. REDUCED SIZED PLANS WILL NOT
CONFORM TO STANDARD SCALES. IN MAKING MEASUREMENTS
ON REDUCED PLANS, THE ABOVE SCALES MAY BE USED.

J.U.L.I.E.
JOINT UTILITY LOCATION INFORMATION FOR EXCAVATION
1-800-892-0123 OR 811

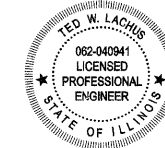


RICH TOWNSHIP
LOCATION MAP
NOT TO SCALE

GROSS LENGTH OF PROJECT = 65.72 FEET = 0.012 MILES
NET LENGTH OF PROJECT = 65.72 FEET = 0.012 MILES

PROJECT MANAGER RAJENDRA SHAH (847) 705-4555
PROJECT ENGINEER MICHELLE AQUINO (847) 705-4606
CONTRACT NO. 60J43

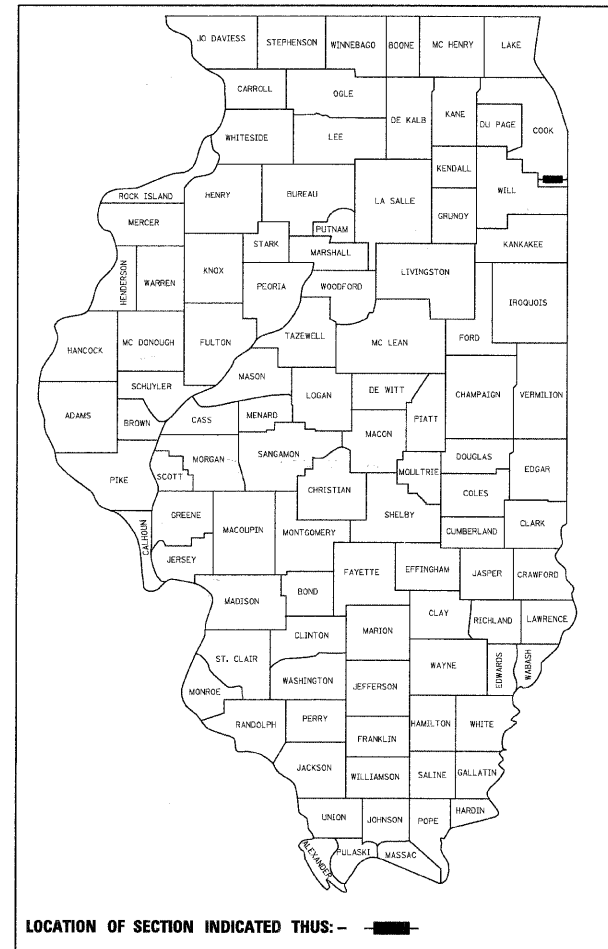
Primera
100 S. WACKER DRIVE SUITE 700 CHICAGO IL 60606.
P:312-606-0910 F:312-606-0415



Ted W. Lachus
TED W. LACHUS, P.E.
EXPIRES 1-30-2011
DATE 1-29-2010

F.A.P. RTE.	SECTION	COUNTY	TOTAL SHEETS	SHEET NO.
353	23R-B-1	COOK	20	1
FED ROAD DIST No. 1 ILLINOIS		CONTRACT No. 60J43		

D-91-233-10



LOCATION OF SECTION INDICATED THUS: -

STATE OF ILLINOIS
DEPARTMENT OF TRANSPORTATION
DIVISION OF HIGHWAYS

SUBMITTED JANUARY 22 2010
Diane M. O'Keefe
DEPUTY DIRECTOR OF HIGHWAYS, REGION ENGINEER
March 19 2010
Scott E. Stitt P.E.
ASSISTANT ENGINEER OF DESIGN AND ENVIRONMENT
March 19 2010
Christine M. Reed
DIRECTOR OF HIGHWAYS, CHIEF ENGINEER

PRINTED BY THE AUTHORITY
OF THE STATE OF ILLINOIS