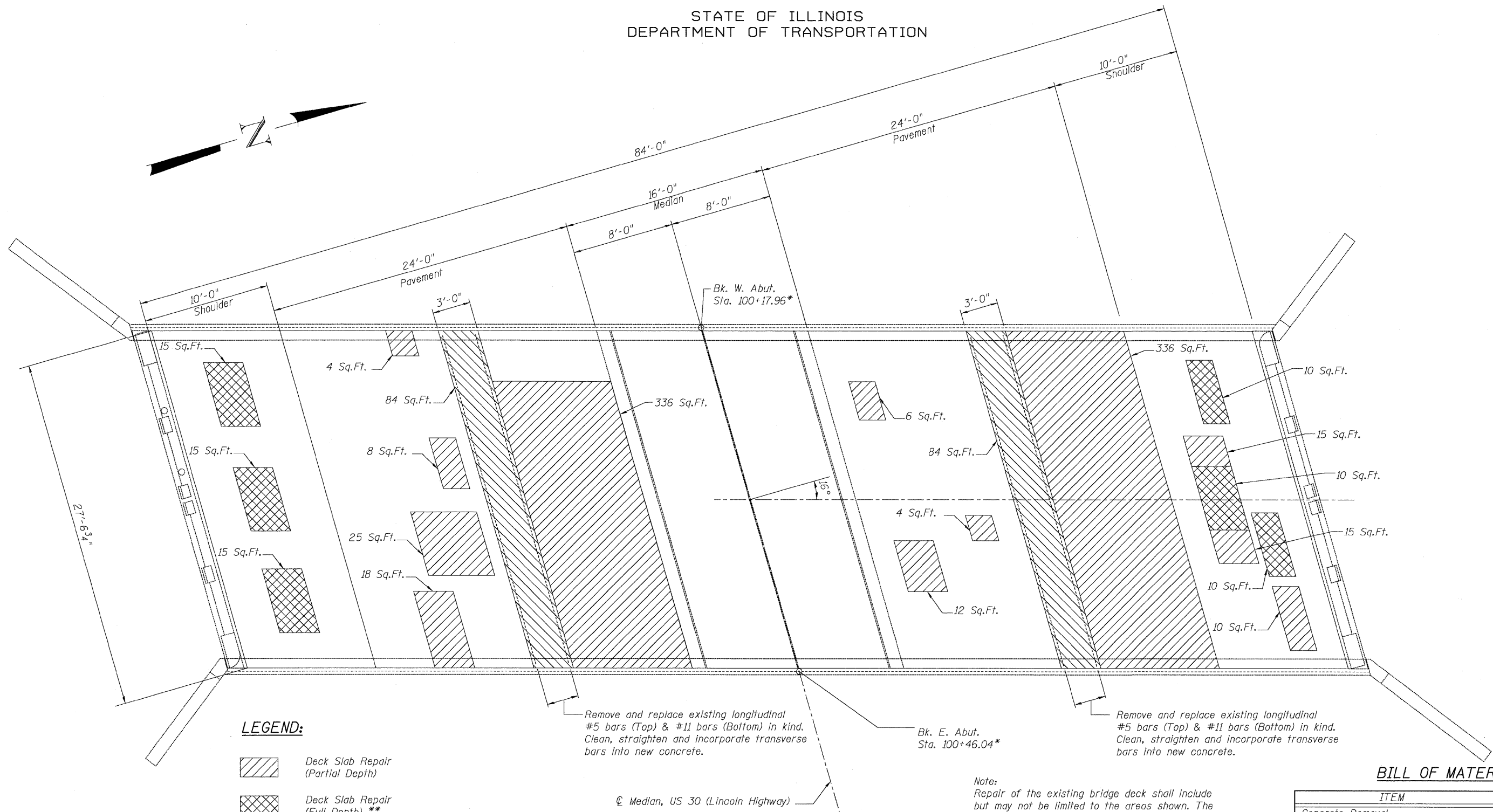


STATE OF ILLINOIS
DEPARTMENT OF TRANSPORTATION



LEGEND:

- Deck Slab Repair (Partial Depth)
- Deck Slab Repair (Full Depth) **
- Concrete Removal

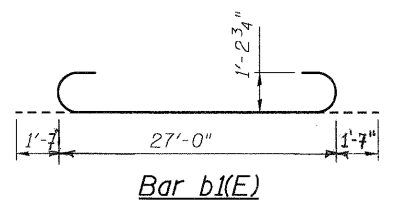
Remove and replace existing longitudinal #5 bars (Top) & #11 bars (Bottom) in kind. Clean, straighten and incorporate transverse bars into new concrete.

Remove and replace existing longitudinal #5 bars (Top) & #11 bars (Bottom) in kind. Clean, straighten and incorporate transverse bars into new concrete.

⊙ Median, US 30 (Lincoln Highway)

BAR LIST

Bar	No.	Size	Length	Shape
b1(E)	8	#11	30'-2"	
b2(E)	8	#5	27'-3"	



Note:
Repair of the existing bridge deck shall include but may not be limited to the areas shown. The actual areas to be repaired will be determined by the Engineer at the time of construction.

* Information taken from 1967 existing plans.

BILL OF MATERIAL

ITEM	UNIT	QUANTITY
Concrete Removal	Cu. Yd.	9.2
Reinforcement Bars, Epoxy Coated	Pound	1,510
Deck Slab Repair (Full Depth, Type II)	Sq. Yd.	9.0
Bridge Deck Hydro-scarification, 1/2"	Sq. Yd.	213
Bridge Deck Latex Concrete Overlay, 2 1/2"	Sq. Yd.	213
Concrete Superstructure	Cu. Yd.	9.2

**BRIDGE DECK PATCHING PLAN
STRUCTURE NO. 016-0286**

DESIGNED	JPM
CHECKED	TG
DRAWN	MPS
CHECKED	JPM, TG

Primera
180 S. WACKER DRIVE SUITE 700, CHICAGO IL 60606 . P.312-606-0910 F.312-606-0415

SHEET NO. 54 S6 SHEETS	F.A.P. RTE.	SECTION	COUNTY	TOTAL SHEETS	SHEET NO.
	353	23 R-B-I	COOK	20	12
			CONTRACT NO. 60J43		
ILLINOIS FED. AID PROJECT					