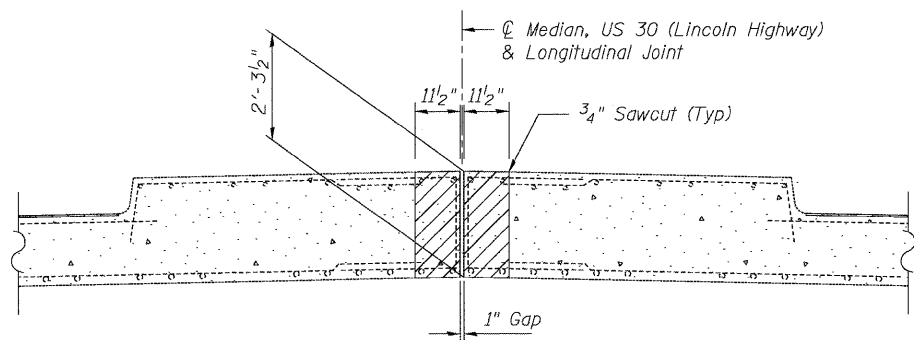
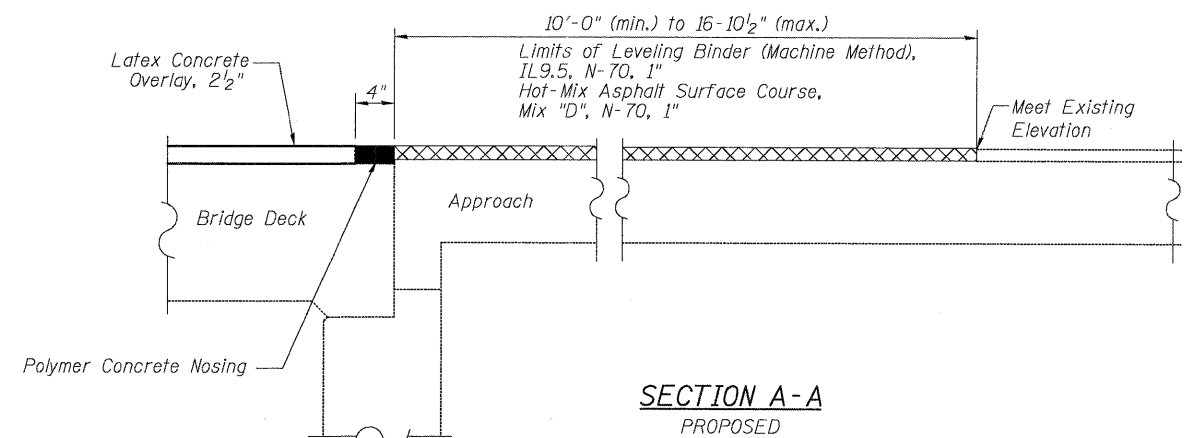
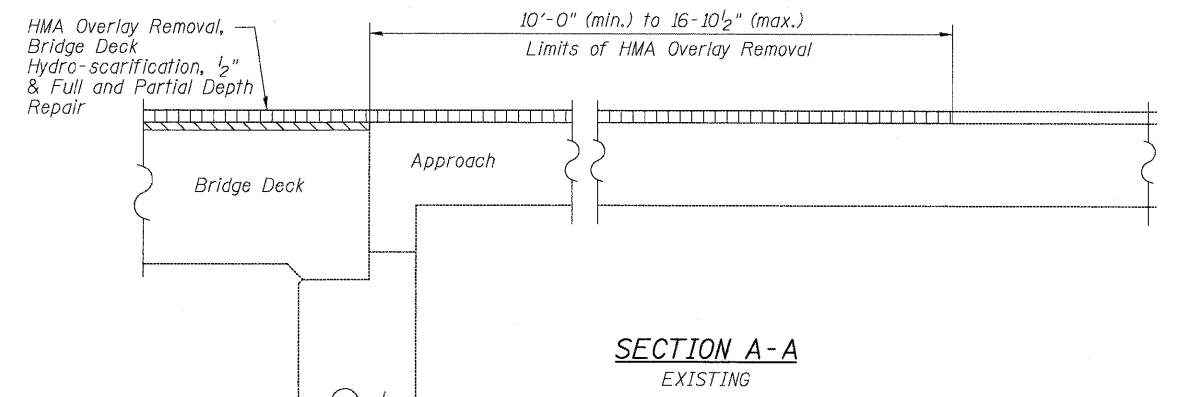
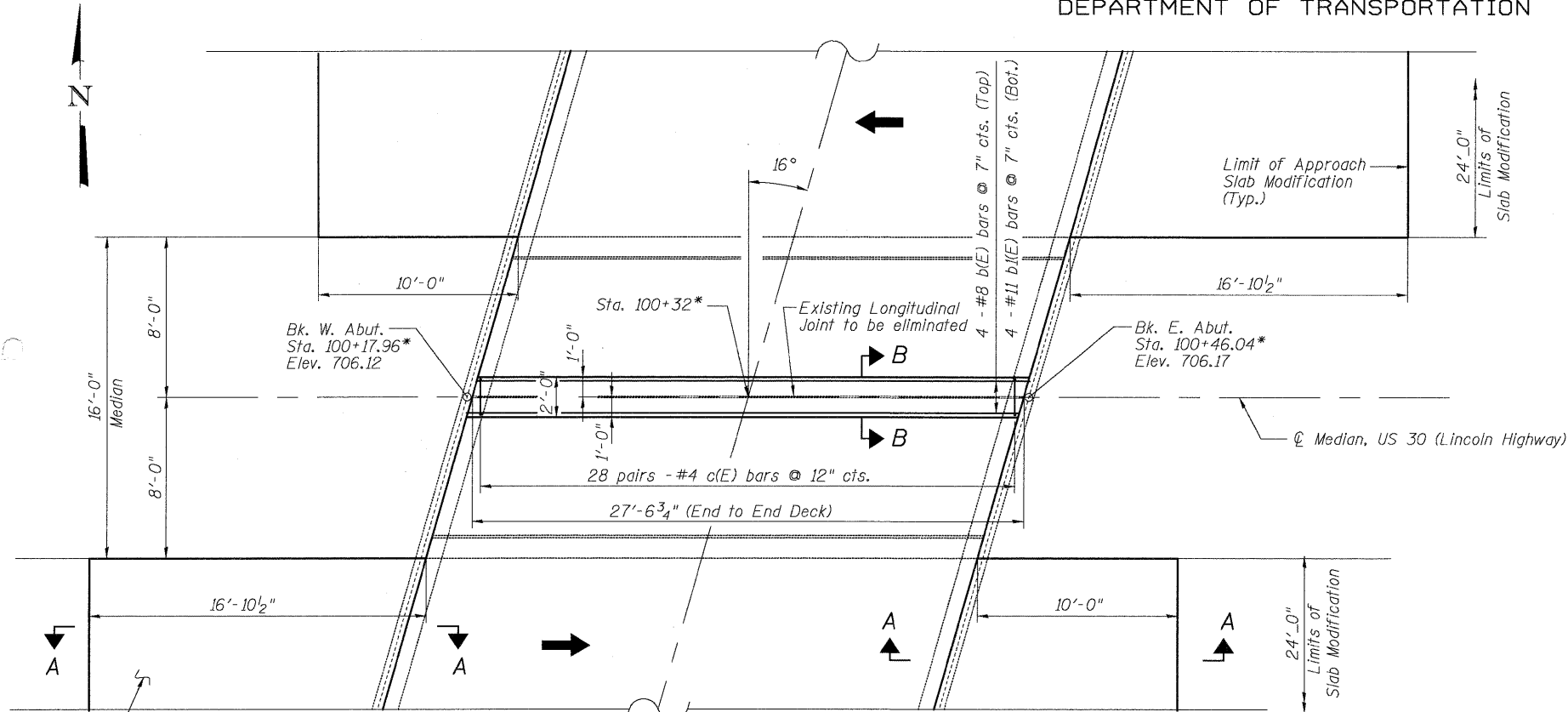
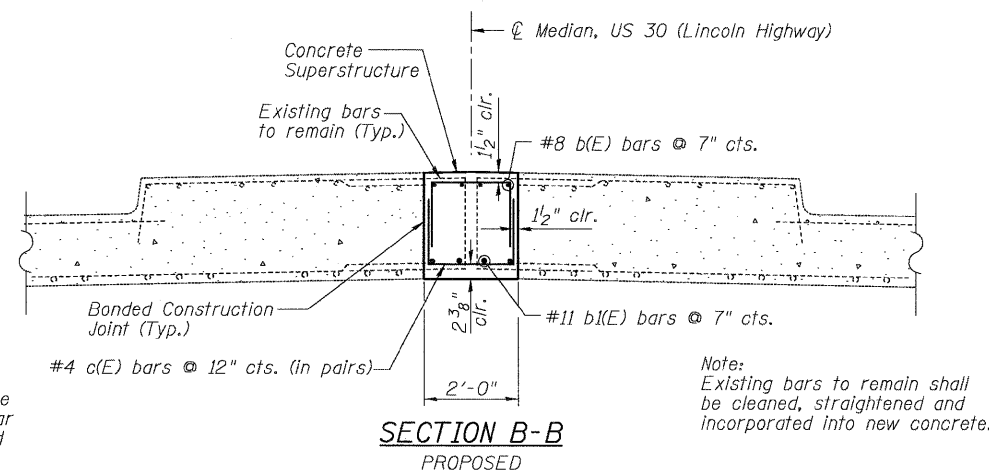


STATE OF ILLINOIS
DEPARTMENT OF TRANSPORTATION

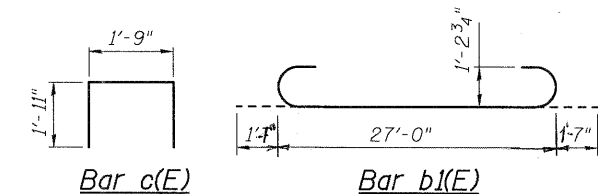


Note:
Any reinforcement bars that are damaged during concrete removal operations shall be repaired or replaced using an approved bar splicer or anchorage system. Cost included with "Concrete Removal".



BAR LIST

Bar	No.	Size	Length	Shape
b(E)	4	#8	27'-3"	—
b ₁ (E)	4	#11	30'-2"	⌋
c(E)	56	#4	5'-7"	⌋



LEGEND:

- Indicates Concrete Removal
- Indicates Leveling Binder (Machine Method), IL9.5, N-70, 1"
Hot-Mix Asphalt Surface Course, Mix "D", N-70, 1 1/2"
- Indicates Hydro-scarification 1/2"
- Indicates Bituminous Concrete Removal

BILL OF MATERIAL

ITEM	UNIT	QUANTITY
Concrete Removal	Cu. Yd.	4.7
Reinforcement Bars, Epoxy Coated	Pound	1,140
Concrete Superstructure	Cu. Yd.	4.7
Hot-Mix Asphalt Surface Removal (Deck)	Sq. Yd.	154
Hot-Mix Asphalt Surface Removal, 2"	Sq. Yd.	144
Leveling Binder (Machine Method), IL9.5, N-70, 1"	Tons	12
Hot-Mix Asphalt Surface Course, Mix "D", N-70, 1"	Tons	13

APPROACH SLAB MODIFICATION &
MEDIAN JOINT ELIMINATION DETAILS
STRUCTURE NO. 016-0286

DESIGNED	JPM
CHECKED	TG
DRAWN	MPS
CHECKED	JPM, TG



SHEET NO. S7	F.A.P. RTE.	SECTION	COUNTY	TOTAL SHEETS	SHEET NO.
	353	23 R-B-I	COOK	20	15
S7 SHEETS			CONTRACT NO. 60J43		
ILLINOIS FED. AID PROJECT					