

STATE OF ILLINOIS
DEPARTMENT OF TRANSPORTATION
DIVISION OF HIGHWAYS

**PROPOSED
HIGHWAY PLANS**

**FAU 2678 / ELMHURST ROAD
SECTION 3025-I-1
OVER HIGGINS CREEK (0.09 MI. S. OF IL 62)
BRIDGE DECK REPAIRS AND OVERLAY
PROJECT NUMBER: M-2678(007)
COOK COUNTY
C-91-260-10**

STATE	SECTION	TOTAL SHEET NO. 10 NO. 60070
ROUTE	3025-I-1	

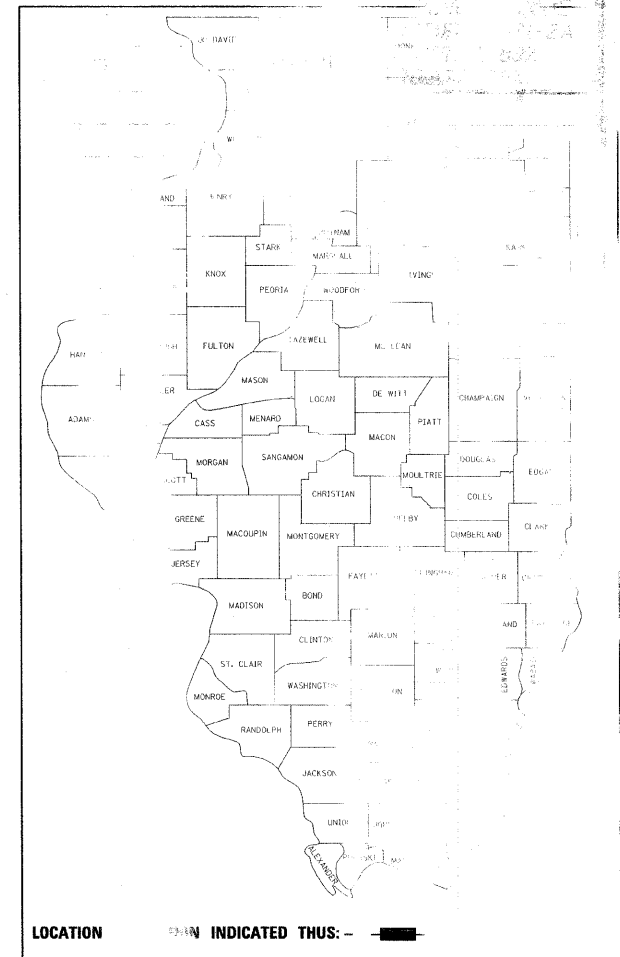
D-91-260-10

FOR INDEX OF SHEETS, SEE SHEET NO. 2

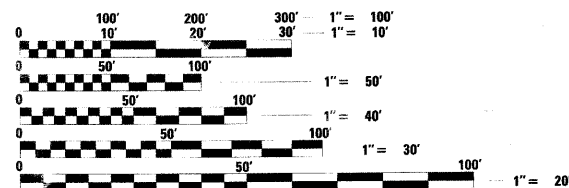
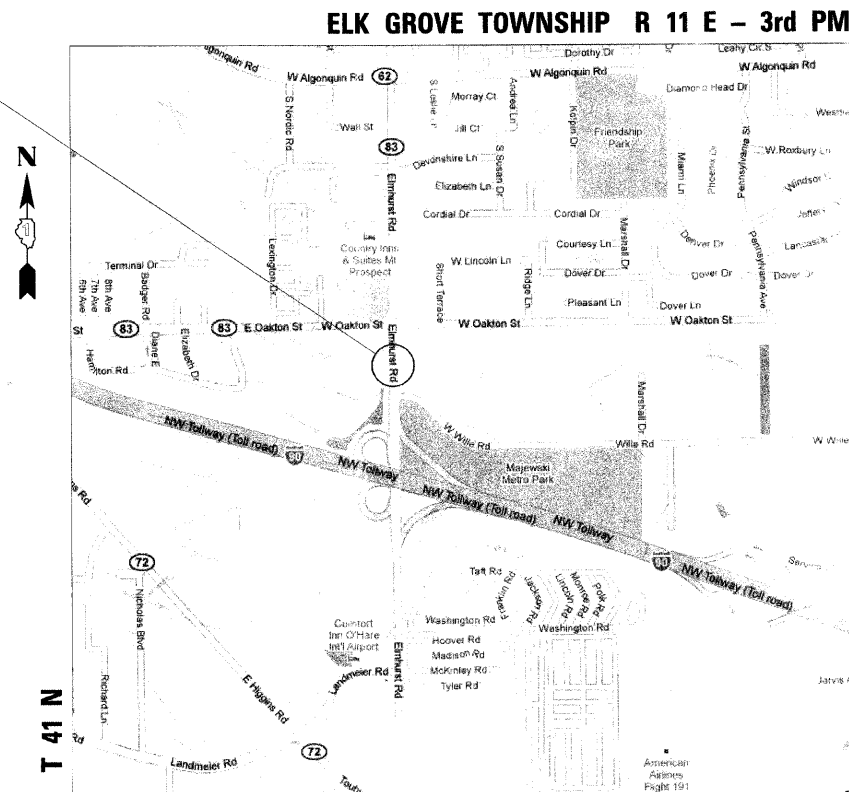
DESIGN DESIGNATION

**MINOR ARTERIAL (URBAN)
ADT 33,500 (2006)
SPEED LIMIT 45 MPH**

**IMPROVEMENT LOCATED
IN ELK GROVE VILLAGE**



**IMPROVEMENT LOCATION
ELMHURST ROAD OVER
HIGGINS CREEK
STRUCTURE NO: 016-0677**



FULL SIZE PLANS HAVE BEEN PREPARED USING STANDARD ENGINEERING SCALES. REDUCED SIZED PLANS WILL NOT CONFORM TO STANDARD SCALES. IN MAKING MEASUREMENTS ON REDUCED PLANS, THE ABOVE SCALES MAY BE USED.

L.I.E.
JOINT UTILITY LOCATION INFORMATION FOR EXCAVATION
1-800-892-0123
UR 811

PROJECT MANAGER: MR. ISAAC KWARTENG (847) 705-4230
PROJECT ENGINEER: MR. ALIX BRICE (847) 705-4552

CONTRACT NO. 60J70

LOCATION MAP
GROSS AND NET LENGTH OF IMPROVEMENT = 68.0 FT. = 0.013 MILE

[Signature]
COLLINS ENGINEERS INC.
JAMES P. COLLINS
REGISTERED PROFESSIONAL ENGINEER
EXPIRES 12/31/10

COLLINS ENGINEERS INC.
123 N. WASHINGTON
CHICAGO, IL 60606
ILLINOIS PROFESSIONAL ENGINEERING LICENSE NO. 00993

STATE OF ILLINOIS
DEPARTMENT OF TRANSPORTATION
DIVISION OF HIGHWAYS

SUBMITTED FEBRUARY 1, 2010

DEPUTY DIRECTOR OF HIGHWAYS, REGISTRATION ENGINEER
Diana M. O'Keefe

March 19, 2010
Acting ENGINEER OF DESIGN AND SUPERVISOR
Scott E. Stitt, P.E.

March 19, 2010
DIRECTOR OF HIGHWAYS, REGISTRATION ENGINEER
Christina M. Reed

**BY THE AUTHORITY
STATE OF ILLINOIS**

STATE OF ILLINOIS
DEPARTMENT OF TRANSPORTATION

SUMMARY OF QUANTITIES

CONSTRUCTION TYPE CODE
STRUCTURE CODE
Y08-2A

INDEX OF SHEETS

- 1 Title Sheet
- 2 Index of Sheets, State Standards,
- 3 General Notes and Summary of Quantities
- 4 Maintenance of Traffic
- 8 Structure Plans S1-S4
- 10 District One Standards Highway Standards

INDEX OF HIGHWAY STANDARDS

Standard No.	Description
00001-05	Standard Symbols, Abbreviations And Patterns
00101-02	Areas Of Reinforcement Rebars
42001-07	Pavement Joints
51501-03	Name Plate For Bridge
63001-08	Steel Plate Beam Guardrail
70151-03	Lane Closure, 2L, 2W, Short Time Operations
701506-02	Lane Closure, 2L, 2W, Slow Moving Operations, Day Only
701521-10	Lane Closure, 2L, 2W, Bridge Repair with Barrier
701501-05	Urban Lane Closure, 2L, 2W, Undivided
701502-03	Urban Lane Closure, 2L, 2W, Bidirectional Left Turn
701502-04	Urban Lane Closure, Multilane 2W, Bidirectional Left Turn
701606-06	Urban Lane Closure, Multilane 2W, with Mountable Median
701901-01	Traffic Control Devices
704001-06	Temporary Concrete Barrier
704001-02	Typical Pavement Markings
701001-03	Typical Applications Raised Reflective Pavement Markers
701411-06	

GENERAL NOTES

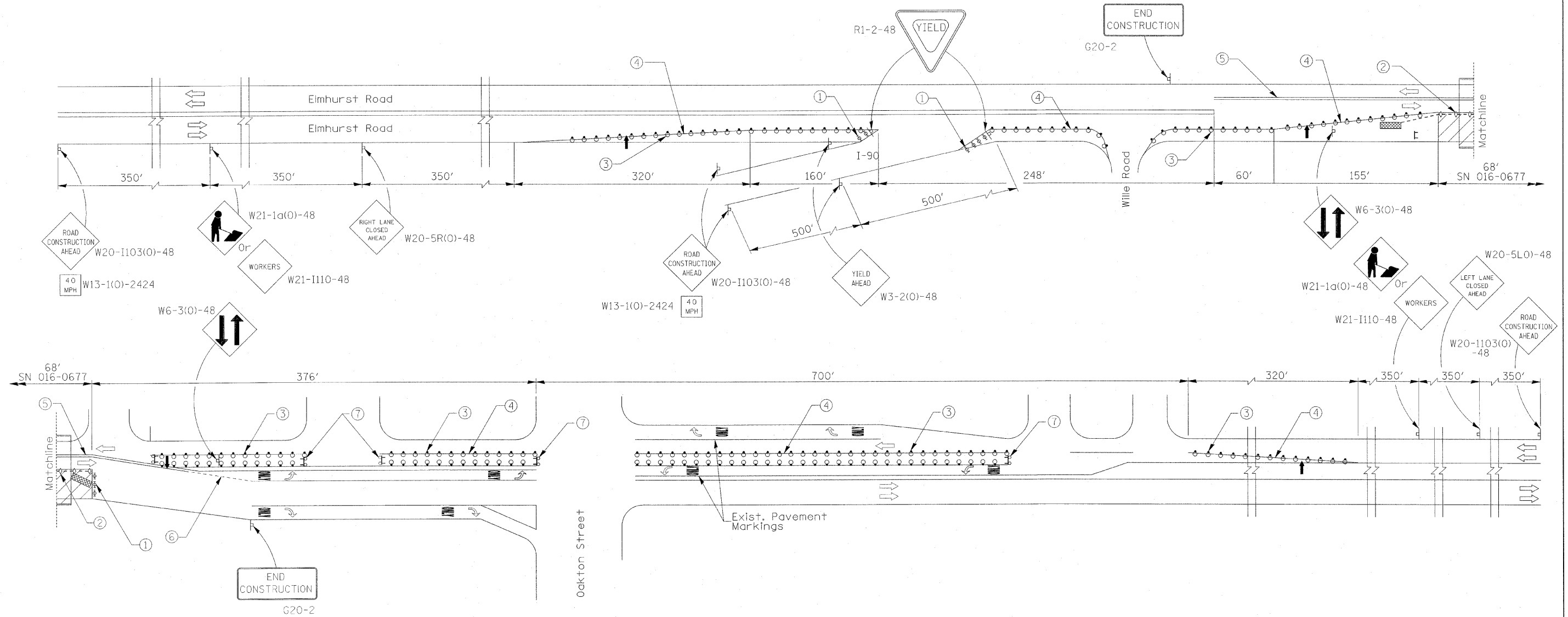
1. These plans have been prepared from notes received from IDOT Field Maintenance Engineers.
2. 10 ft (3 m) transitions shall be used to match proposed items of work to existing items in the field, unless otherwise shown. The transitions shall be paid for at the contract unit price for the proposed item of work specified.
3. Where artificial lighting is utilized in night operations, the Contractor shall exercise the utmost precautions in preventing adverse visibility to the motoring public and adjoining residential areas.
4. The engineer shall be the sole judge concerning curing time for the various hot-mix asphalt lifts.
5. For stabilization, all Type III barricades shall require a minimum of four (4) sandbags per barricade.
6. The Resident Engineer must contact the Traffic Control Supervisor at (847)705-4470 at least 72 hours prior to installation of the temporary control devices.
7. The Resident Engineer shall contact the Area Traffic Field Engineer (Walter Czorny) at (847)715-8419 at least two (2) weeks prior to the placement of permanent pavement markings.
8. All pavement markings and raised reflectors affected by the bridge repairs shall be replaced. Nominal quantities have been included in the contract for this work.
9. The Contractor will not be allowed to set up a yard or field office on State property without written permission from the Department.
10. Do not scale these plans for construction purposes.
11. Plan dimensions and details relative to existing plans are subject to routine variations. The Contractor shall field verify existing dimensions and details affecting new construction and make necessary approved adjustments prior to construction or ordering of materials. Such variations shall not be cause for additional compensation for a change in scope of the work. However, the Contractor will be paid for the quantity actually furnished based upon the unit price bid for the work.
12. During construction operations, loose material deposits that obstruct the flow of water in draining the area shall be removed before the end of each work day. At the conclusion of construction operations, all drainage structures (new and existing) shall be free from all dirt and debris. This work will not be paid for separately but shall be considered incidental to the contract.
13. All Type I and Type II barricades shall have two (2) sandbags on the bottom rail.
14. The quantities for Hot-Mix Asphalt Surface Removal (Deck); Hot-Mix Asphalt Surface Removal, 1/2"; and Polymerized Hot-Mix Asphalt Surface Course, Mix "F", N90 have been prepared assuming 1/2 inch thick hot-mix asphalt overlays. Removal and replacement of the entire thickness of existing overlay is required.
15. All raised reflective pavement markers (bridge) shall be low profile.
16. Before beginning any work, the Contractor shall retain and record for future reference, all existing pavement marking lines, symbols and letters (and raised reflective markers) in order that these locations can be re-established for striping. Exact locations of all pavement markings and raised reflective pavement markers shall be as directed by the Engineer.

HOT-MIX ASPHALT MIXTURE REQUIREMENTS	
MIXTURE TYPE	AIR VOIDS @ Ndes
Polymerized Hot-Mix Asphalt Surface Course, Mix "F", N90 (IL 9.5mm)	4% @ 70 Gyr.

The unit weight used to calculate all HMA Surface mixture quantities is 112 Lbs./Sq. Yd./In.

CODL	ITEM DESCRIPTION	UNIT	QUANTITY	URBAN
40600100	Bituminous Materials (Prime Coat)	Gallon	25	25
40603595	Polymerized Hot-Mix Asphalt Surface Course, Mix "F", N90	Ton	21	21
42001300	Protective Coat	Sq. Yd.	203	203
44000155	Hot-Mix Asphalt Surface Removal, 1 1/2"	Sq. Yd.	245	245
44000915	Hot-Mix Asphalt Surface Removal (Deck)	Sq. Yd.	172	172
50102100	Concrete Removal	Cu. Yd.	12	12
50300255	Concrete Superstructure	Cu. Yd.	7	7
50300260	Bridge Deck Grooving	Sq. Yd.	165	165
50800105	Reinforcement Bars, Epoxy Coated	Pound	1,270	1,270
67000400	Engineer's Field Office, Type A	Cal. Mo.	3	3
67100100	Mobilization	L Sum	1	1
70101800	Traffic Control and Protection, (Special)	L Sum	1	1
70301000	Work Zone Pavement Marking Removal	Sq. Ft.	1,652	1,652
70400100	Temporary Concrete Barrier	Foot	88	88
70400200	Relocate Temporary Concrete Barrier	Foot	68	68
* 78000200	Thermoplastic Pavement Marking - Line 4"	Foot	1,590	1,590
* 78008210	Polyurea Pavement Marking, Type I - Line 4"	Foot	70	70
* 78100100	Raised Reflective Pavement Marker	Each	10	10
* 78100105	Raised Reflective Pavement Marker (Bridge)	Each	10	10
78100200	Temporary Raised Reflective Pavement Marker	Each	10	10
78300100	Pavement Marking Removal	Sq. Ft.	553	553
78300200	Raised Reflective Pavement Marker Removal	Each	25	25
X0320810	Polymer Concrete	Cu. Ft.	7	7
X0322185	Bridge Deck Latex Concrete Overlay, 2 1/4 Inches	Sq. Yd.	160	160
X0322256	Temporary Information Signing	Sq. Ft.	50	50
X0325305	Structural Repair of Concrete (Depth Equal To or Less Than 5 Inches)	Sq. Ft.	92	92
X0325775	Wet Reflective Temporary Tape, Type III, 4 Inch	Foot	4,955	4,955
X0326766	Clean & Reseal Relief Joint	Foot	110	110
Z0001800	Approach Slab Repairs (Partial Depth)	Sq. Yd.	1	1
Z0006204	Bridge Deck Hydro-Scarification 1/2"	Sq. Yd.	172	172
Z0016002	Deck Slab Repair (Full Depth, Type II)	Sq. Yd.	14	14
Z0030250	Impact Attenuators, Temporary (Non-Redirective), Test Level 3	Each	2	2
Z0030350	Impact Attenuators, Relocate (Non-Redirective), Test Level 3	Each	2	2
X0325837	Wet Reflective Temporary Tape, Type III, 6 Inch	Foot	25	25
X0325137	TEMPORARY TRAFFIC SIGNAL TIMING	Each	1	1
* Specialty Items				

STATE OF ILLINOIS
DEPARTMENT OF TRANSPORTATION



SYMBOLS

- | | | | |
|--|--------------------|--|--|
| | Work area | | Drum with steady burning light |
| | Sign | | Temporary concrete barrier |
| | Type III barricade | | Crystal, bidirectional barrier wall/guardrail marker |
| | Impact attenuator | | Barricade or drum with flashing light |
| | Arrow board | | |

- ① Type II barricades or drums with steady burning monodirectional light
- ② Barrier wall/guardrail markers at 25' cts. See Standards 704001 & 635011.
- ③ Drums at 6' centers
- ④ Temporary pavement marking, 4" wide solid white
- ⑤ Temporary pavement marking, 4" wide double yellow at 8 inches C-C
- ⑥ Temporary pavement marking, 6" wide dashed white (2' line, 6' space)
- ⑦ Type I or Type II barricades, per Standard 701606

NOTES:

MAINTENANCE OF TRAFFIC DEVICES TO BE INSTALLED IN ACCORDANCE WITH APPLICABLE PORTIONS OF STANDARDS 701321, 701411, AND 701606 AND DISTRICT ONE STANDARDS TC-11 AND TC-13. ADDITIONAL SIGNAGE MAY BE REQUIRED BY THE RESIDENT ENGINEER. THIS WORK AND SIGNAGE IS INCLUDED IN THE PAYITEM FOR TRAFFIC CONTROL AND PROTECTION, (SPECIAL).

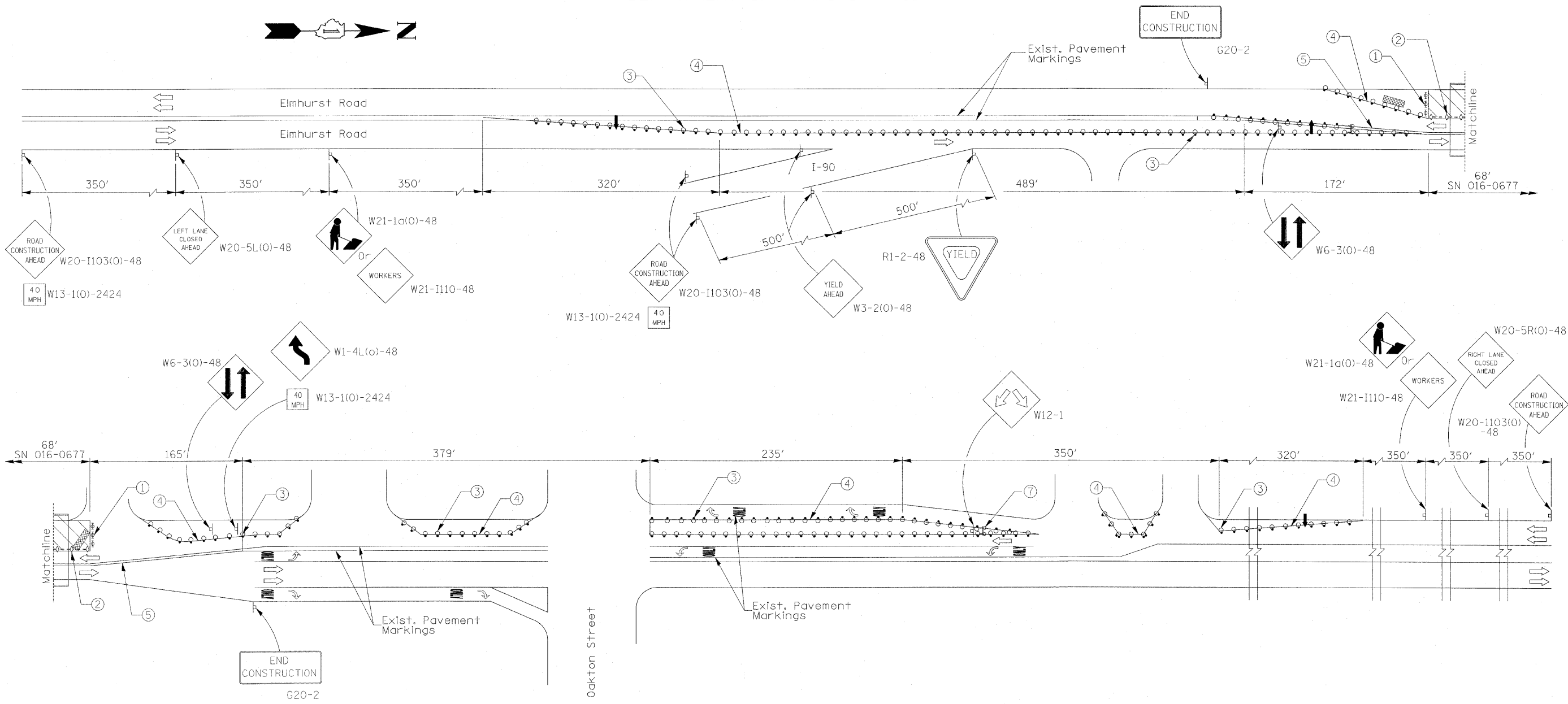
EXISTING, CONFLICTING PAVEMENT MARKINGS SHALL BE REMOVED. THIS WORK SHALL BE PAID FOR AS PAVEMENT MARKING REMOVAL.

REMOVAL OF THE TEMPORARY PAVEMENT MARKINGS SHALL BE PAID FOR UNDER THE PAY ITEM WORK ZONE PAVEMENT MARKING REMOVAL.

THE EXISTING PAVEMENT MARKINGS THAT HAVE BEEN REMOVED SHALL BE REPLACED IN-KIND. POLYUREA PAVEMENT MARKING, TYPE I WILL BE PLACED ON CONCRETE SURFACES. THERMOPLASTIC PAVEMENT MARKINGS WILL BE PLACED ON HMA SURFACES.

FILE NAME = 0160J70-shr-staging.dgn	USER NAME = IDDT(eng)	DESIGNED - A. Selber	REVISED -	STATE OF ILLINOIS DEPARTMENT OF TRANSPORTATION	STAGE I CONSTRUCTION - MAINTENANCE OF TRAFFIC FAU 2678 / ELMHURST ROAD OVER HIGGINS CREEK	F.A.U. RTE. 2678	SECTION 3025-1-1	COUNTY COOK	TOTAL SHEETS 10	SHEET NO. 3
	PLOT SCALE =	DRAWN - A. Selber	REVISED -			SCALE:	SHEET NO. 1 OF 2 SHEETS	STA. TO STA.	CONTRACT NO. 60J70 [ILLINOIS] FED. AID PROJECT	
PLOT DATE = February 1, 2010	CHECKED - J. Homelka	DATE - JANUARY, 2010	REVISED -							

STATE OF ILLINOIS
DEPARTMENT OF TRANSPORTATION



- SYMBOLS**
- Work area
 - Sign
 - Type III barricade
 - Impact attenuator
 - Arrow board
 - Drum with steady burning light
 - Temporary concrete barrier
 - Double vertical panel (see detail)
 - Crystal, bidirectional barrier wall/guardrail marker
 - Barricade or drum with flashing light

- ① Type II barricades or drums with steady burning monodirectional light
- ② Barrier wall/guardrail markers at 25' cts. See Standards 704001 & 635011.
- ③ Drums at 6' centers
- ④ Temporary pavement marking, 4" wide solid white
- ⑤ Temporary pavement marking, 4" wide double yellow at 8 inches C-C
- ⑥ Temporary pavement marking, 6" wide dashed white (2' line, 6' space)
- ⑦ Type I or Type II barricades, per Standard 701606

NOTES:

MAINTENANCE OF TRAFFIC DEVICES TO BE INSTALLED IN ACCORDANCE WITH APPLICABLE PORTIONS OF STANDARDS 701321 AND 701606 AND DISTRICT ONE STANDARDS TC-11 AND TC-13. ADDITIONAL SIGNAGE MAY BE REQUIRED BY THE RESIDENT ENGINEER. THIS WORK AND SIGNAGE IS INCLUDED IN THE PAYITEM FOR TRAFFIC CONTROL AND PROTECTION, (SPECIAL).

EXISTING, CONFLICTING PAVEMENT MARKINGS SHALL BE REMOVED. THIS WORK SHALL BE PAID FOR AS PAVEMENT MARKING REMOVAL.

REMOVAL OF THE TEMPORARY PAVEMENT MARKINGS SHALL BE PAID FOR UNDER THE PAY ITEM WORK ZONE PAVEMENT MARKING REMOVAL.

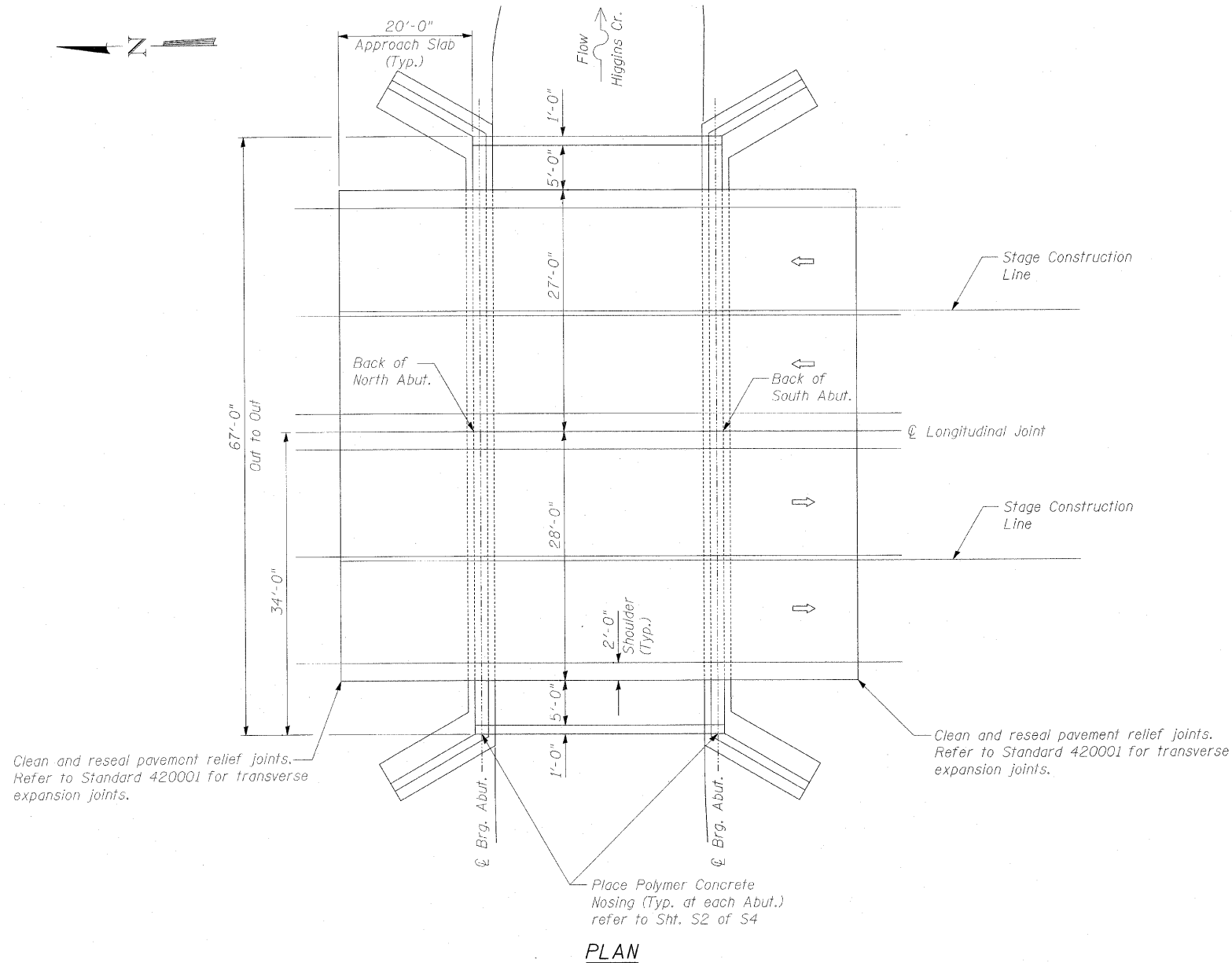
THE EXISTING PAVEMENT MARKINGS THAT HAVE BEEN REMOVED SHALL BE REPLACED IN-KIND. POLYUREA PAVEMENT MARKING, TYPE I WILL BE PLACED ON CONCRETE SURFACES. THERMOPLASTIC PAVEMENT MARKINGS WILL BE PLACED ON HMA SURFACES.

FILE NAME = 01680378-shr-staging.dgn	USER NAME = IDOT (eng)	DESIGNED - A. Selber	REVISED -	STATE OF ILLINOIS DEPARTMENT OF TRANSPORTATION	STAGE II CONSTRUCTION - MAINTENANCE OF TRAFFIC FAU 2678 / ELMHURST ROAD OVER HIGGINS CREEK		F.A.U. RTE. 2678	SECTION 3025-1-1	COUNTY COOK	TOTAL SHEETS 10	SHEET NO. 4			
	PLOT SCALE =	CHECKED - J. Hamelka	REVISED -				SCALE:	SHEET NO. 2 OF 2 SHEETS	STA.	TO STA.	CONTRACT NO. 60J70 ILLINOIS FED. AID PROJECT			
	PLOT DATE = February 1, 2010	DATE - JANUARY, 2010	REVISED -											

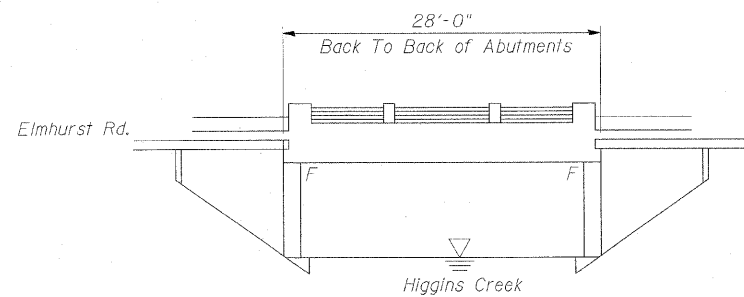
STATE OF ILLINOIS
DEPARTMENT OF TRANSPORTATION

Existing Structure: The structure is a single span reinforced concrete slab bridge with a hot-mix asphalt overlay.
The original structure was built in 1926 as Section 3025-I 1.

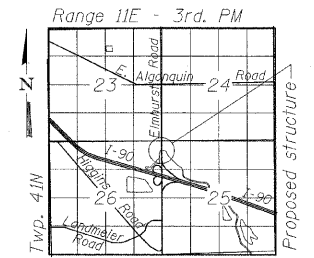
Salvage: None.



PLAN



ELEVATION



LOCATION SKETCH

DESIGN SPECIFICATIONS
2002 AASHTO Standard Specifications
for Highway Bridges, 17th Edition

DESIGN STRESSES
 $f'_c = 3,500$ psi
 $f_y = 60,000$ psi

- SCOPE OF WORK**
1. Bridge deck and approach pavement overlay removal.
 2. Bridge deck hydro-scarification.
 3. Reconstruct longitudinal joint.
 4. Repair bridge deck.
 5. Repair approach slabs.
 6. Repair parapets and sidewalks.
 7. Place new overlay.
 8. Clean and reseal pavement relief joints.

DESIGNED JMC/JMH	2010
CHECKED JMH	EXAMINED
DRAWN JMC	PASSED
CHECKED SLK	

2010
EXAMINED
ENGINEER OF STRUCTURAL SERVICES
PASSED
ENGINEER OF BRIDGES AND STRUCTURES

STATE OF ILLINOIS
JAMES M. HAMELKA
NO. 81-6116
EXPIRES 11-30-2010
02.24.2010

GENERAL PLAN AND ELEVATION
F.A.U. ROUTE 2678 SEC. 3025-I-1
ELMHURST ROAD OVER HIGGINS CREEK
COOK COUNTY
STATION 51+88
STRUCTURE NO. 016-0677

SHEET NO. S1 OF S4 SHEETS	F.A.U. RTE. 2678	SECTION 3025-I-1	COUNTY COOK	TOTAL SHEETS 10	SHEET NO. 5
	CONTRACT NO. 60J70				

ILLINOIS FED. AID PROJECT

STATE OF ILLINOIS
DEPARTMENT OF TRANSPORTATION

INDEX OF SHEETS

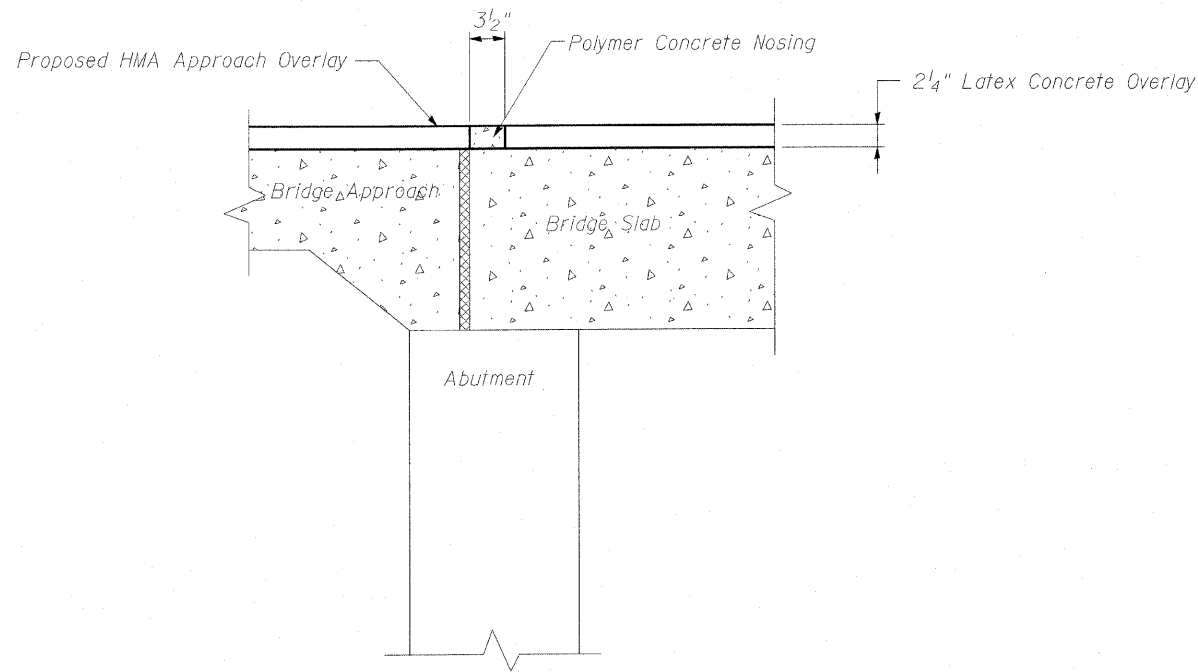
- S1. General Plan and Elevation
- S2. General Notes, Bill of Materials and Index of Sheets
- S3. Stage Construction Details
- S4. Parapet, Bridge Deck and Approach Slab Repairs

GENERAL NOTES:

1. Reinforcement bars shall conform to the requirements of ASTM A 706 Grade 60. See Special Provisions.
2. Reinforcement bars designated (E) shall be epoxy coated.
3. Plan dimensions and details relative to existing plans are subject to nominal construction variations. The Contractor shall field verify existing dimensions and details affecting new construction and make necessary approved adjustments prior to construction or ordering of materials. Such variations shall not be cause for additional compensation for a change in scope of the work, however, the Contractor will be paid for the quantity actually furnished at the unit price bid for the work.
4. Stage construction shall be utilized to maintain traffic during construction.
5. The removal and reattachment of guardrail, hand rail, steel railings, traffic barrier terminal, and etcetera required for repair work (e.g. transverse joint replacement or structural repair of concrete) shall be included in the contract unit price of the work item being performed.

TOTAL BILL OF MATERIAL

ITEM DESCRIPTION	UNIT	SUPER SRUCT.	SUB SRUCT.	TOTAL
Approach Slab Repair (Partial Depth)	Sq. Yd.	1		1
Protective Coat	Sq. Yd.	203		203
Bridge Deck Grooving	Sq. Yd.	165		165
Bridge Deck Latex Concrete Overlay 2 1/4"	Sq. Yd.	160		160
Bridge Deck Hydro-Scarification 1/2"	Sq. Yd.	172		172
Structural Repair of Concrete (Depth equal to or less than 5")	Sq. Ft.	92		92
Hot-Mix Asphalt Surface Removal 1 1/2"	Sq. Yd.	245		245
Polymerized Hot-Mix Asphalt Surface Course Mix "F", N90	Ton	21		21
Hot-Mix Asphalt Surface Removal (Deck)	Sq. Yd.	172		172
Clean and Reseal Relief Joints	Foot	110		110
Polymer Concrete	Cu. Ft.	7		7
Concrete Removal	Cu. Yd.	12		12
Concrete Superstructure	Cu. Yd.	7		7
Reinforcement Bars, Epoxy Coated	Pound	1,270		1,270
Bituminous Materials (Prime Coat)	Gallon	25		25



**CONCRETE NOSING DETAIL
AT BRIDGE ABUTMENTS**

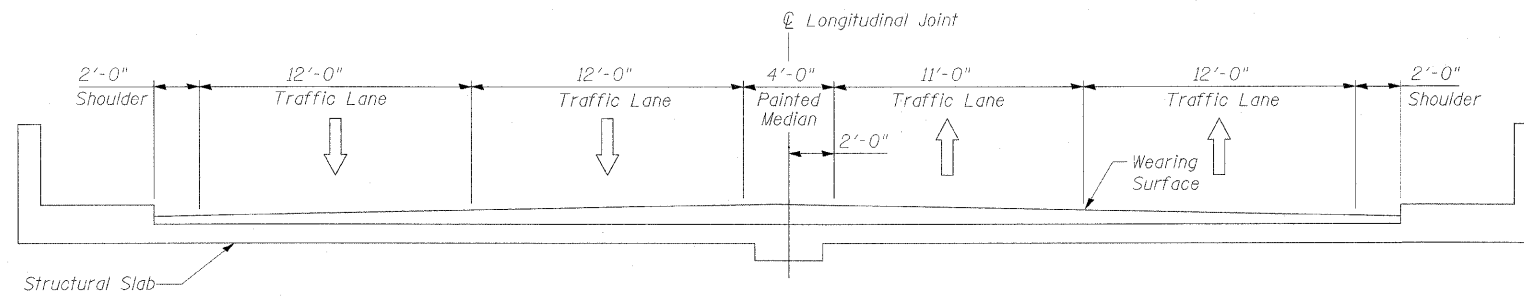
Note: When the polymer concrete nosing is to be installed adjacent to a deck overlay, the nosing shall be installed after the overlay is placed.

**GENERAL NOTES, BILL OF MATERIALS
AND INDEX OF SHEETS
STRUCTURE NO. 016-0677**

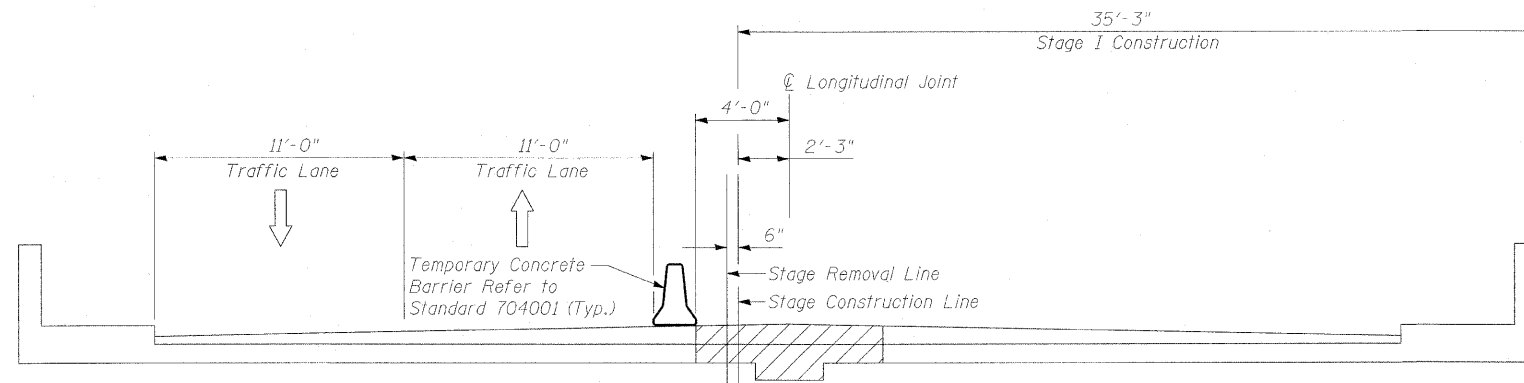
DESIGNED JMC/JMH	2018
CHECKED JMH	EXAMINED
DRAWN JMC	ENGINEER OF STRUCTURAL SERVICES
CHECKED SLK	PASSED
	ENGINEER OF BRIDGES AND STRUCTURES

SHEET NO. S2 OF S4 SHEETS	F.A.U. RTE. 2678	SECTION 3025-I-1	COUNTY COOK	TOTAL SHEETS 10	SHEET NO. 6
CONTRACT NO. 60J70					
ILLINOIS FED. AID PROJECT					

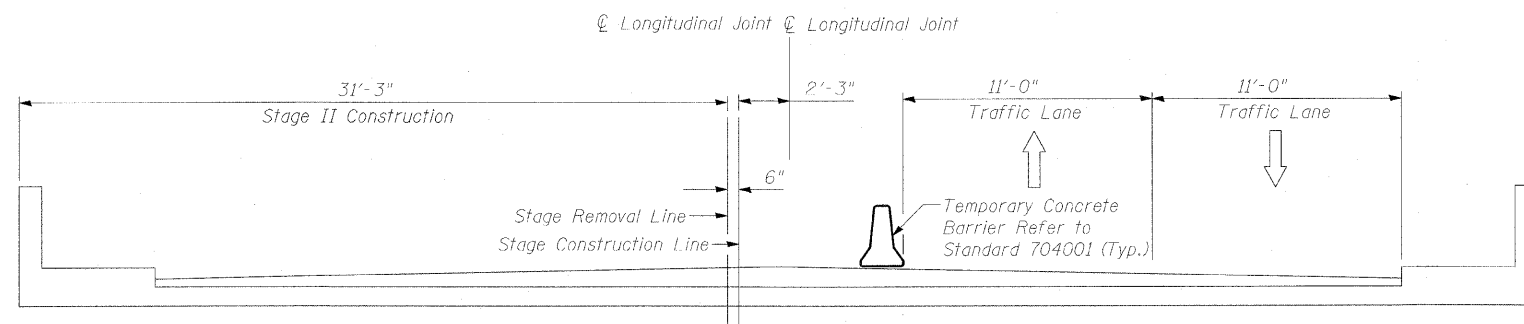
STATE OF ILLINOIS
DEPARTMENT OF TRANSPORTATION



EXISTING CROSS SECTION
(Looking North)



STAGE I CROSS SECTION
(Looking North)



STAGE II CROSS SECTION
(Looking North)

NOTE
For quantity of temporary concrete barrier refer to Summary of Quantities.

STAGE CONSTRUCTION DETAILS
STRUCTURE NO. 016-0677

DESIGNED JMC/JMH	2010
CHECKED JMH	EXAMINED
DRAWN JMC	PASSED
CHECKED SLK	ENGINEER OF BRIDGES AND STRUCTURES

SHEET NO. S3 OF S4 SHEETS	F.A.U. RTE. 2678	SECTION 3025-I-1	COUNTY COOK	TOTAL SHEETS 10	SHEET NO. 7
	CONTRACT NO. 60J70				
ILLINOIS FED. AID PROJECT					

STATE OF ILLINOIS
DEPARTMENT OF TRANSPORTATION

BILL OF MATERIAL

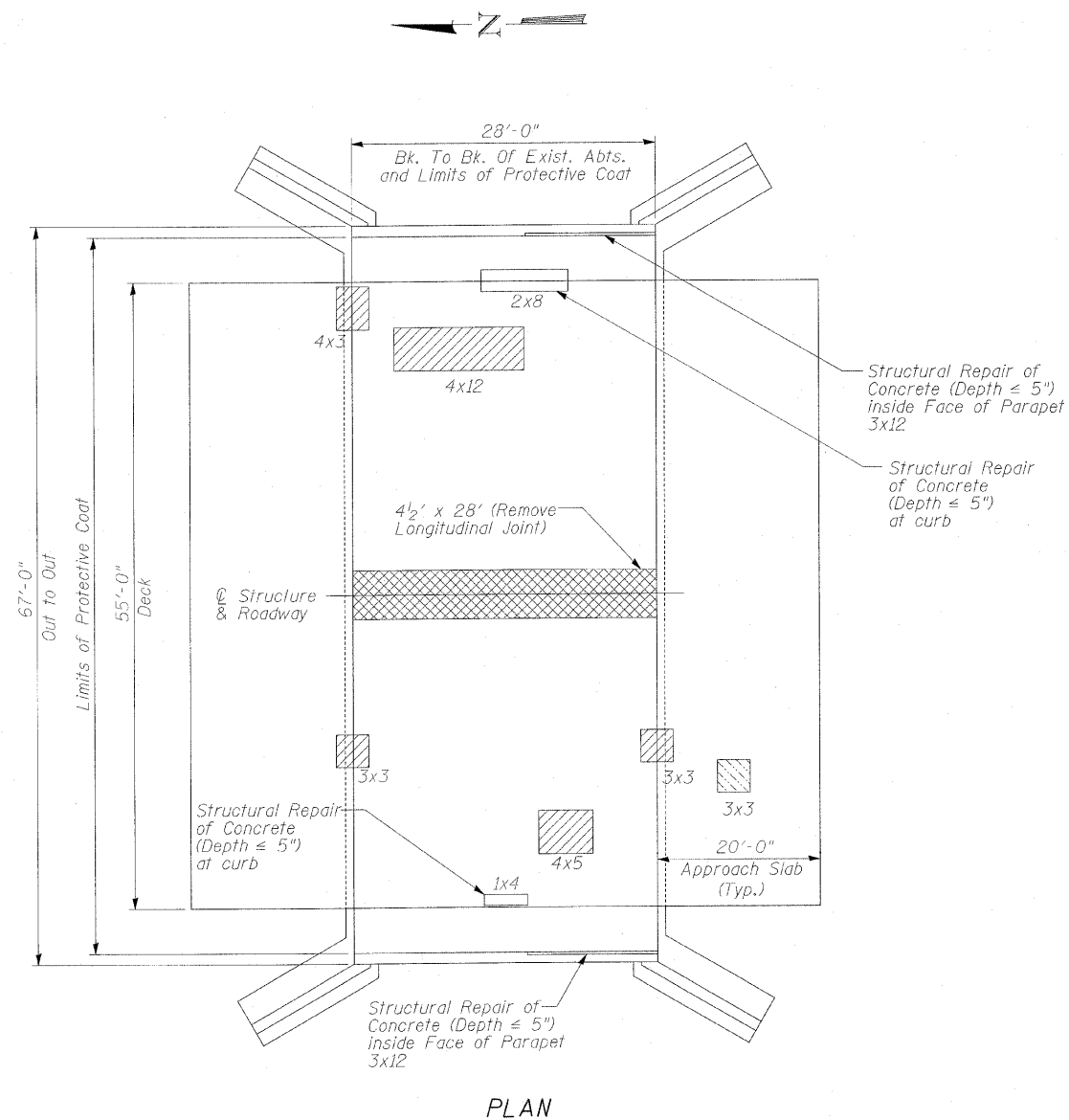
SYMBOL	ITEM	UNIT	QUANTITY
	Deck Slab Repair (Partial) Δ	Sq. Yd.	12
	Approach Slab Repair (Partial Depth)	Sq. Yd.	1
	Protective Coat	Sq. Yd.	203
	Bridge Deck Grooving	Sq. Yd.	165
	Bridge Deck Latex Concrete Overlay 2 1/4"	Sq. Yd.	160
	Bridge Deck Hydro-Scarification 1/2"	Sq. Yd.	172
	Structural Repair of Concrete (Depth equal to or less than 5")	Sq. Ft.	92
	Hot-Mix Asphalt Surface Removal 1 1/2"	Sq. Yd.	245
	Polymerized Hot-Mix Asphalt Surface Course Mix "F", N90	Ton	21
	Hot-Mix Asphalt Surface Removal (Deck)	Sq. Yd.	172
	Concrete Removal	Cu. Yd.	12
	Concrete Superstructure	Cu. Yd.	7
	Reinforcement Bars, Epoxy Coated	Pound	1,270
	Bituminous Materials (Prime Coat)	Gallon	25

BAR	NO.	SIZE	LENGTH	SHAPE
a1 (E)	13	#8	27'-8"	—
a2 (E)	5	#5	27'-8"	—
b1 (E)	58	#4	4'-2"	—

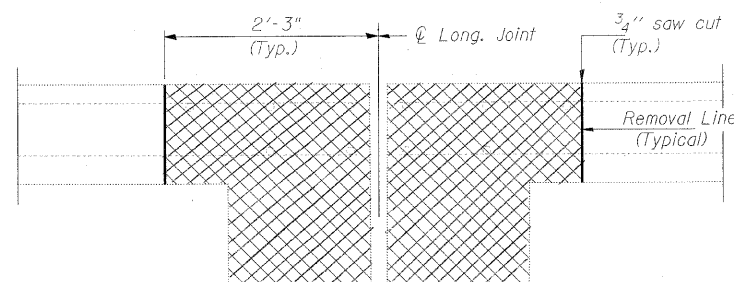
Δ For information only to assist the Contractor in bidding. See Special Provision for "Bridge Deck Latex Overlay."

NOTES:

- Deck And Approach Slab Repair Areas Are Estimated Based On Visual Inspection Completed In October 2009. Actual Repair Areas And Locations Shall Be Determined By The Engineer And Shown On As-built Plans.
- The Contractor may have to remove and reattach traffic barrier terminal to facilitate structural repair of concrete at parapets. This work shall be included in the item for "Structural Repair of Concrete (Depth < 5")."
- The following items consider the entire deck surface area:
Hot Mix Asphalt Surface Removal (Deck)
Bridge deck hydro-scarification 1/2"
Bridge deck grooving
- The item for Bridge Deck Latex Concrete Overlay 2 1/4" considers the deck area excluding the reconstructed longitudinal joint area.
- The following items apply to the extents of both approach slabs:
Hot-Mix Asphalt Surface Removal, 1 1/2"
Polymerized Hot-Mix Asphalt Surface Course, Mix "F", N90
Bituminous Materials (Prime Coat)
- The protective coat shall be applied to the bridge deck, sidewalks and inside faces of parapets.

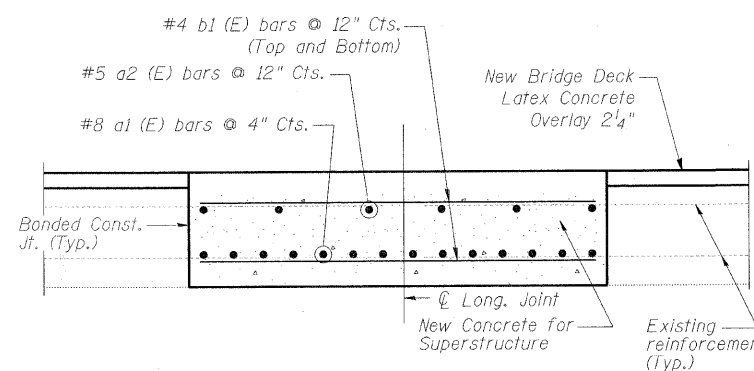


PLAN



EXISTING LONGITUDINAL JOINT CROSS SECTION

Cross Hatched areas indicate concrete sections to be removed. Perimeters of Concrete Removal areas shall be saw cut 3/4" prior to the removal of the concrete. Existing transverse reinforcement shall be cleaned, straightened and incorporated into the new construction. New reinforcement bars shall be epoxy coated.



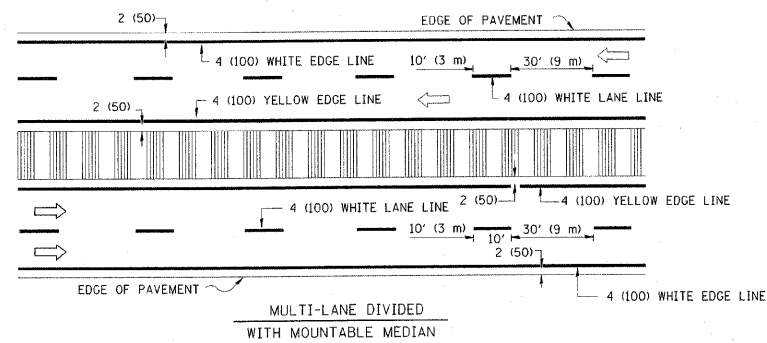
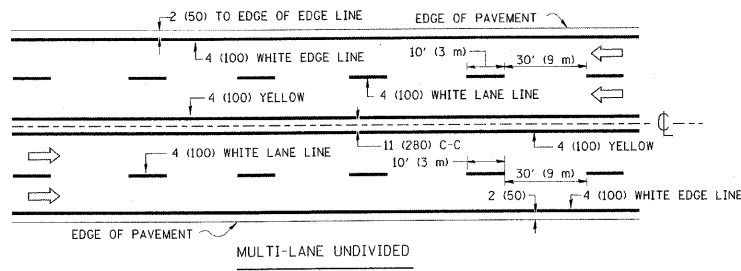
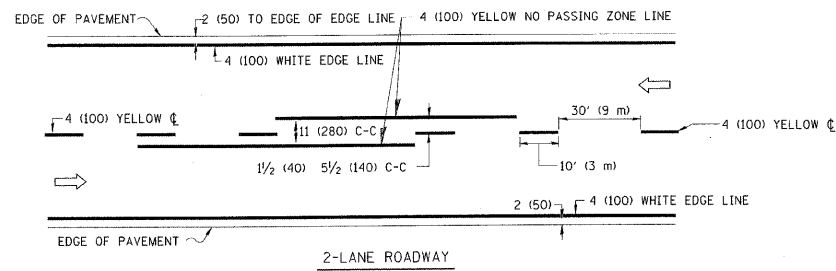
RECONSTRUCTED LONGITUDINAL JOINT WITH CONCRETE BRIDGE DECK OVERLAY DETAIL

DESIGNED JMC/JMH	2010
CHECKED JMH	EXAMINED
DRAWN JMC	PASSED
CHECKED SLK	

ENGINEER OF STRUCTURAL SERVICES
ENGINEER OF BRIDGES AND STRUCTURES

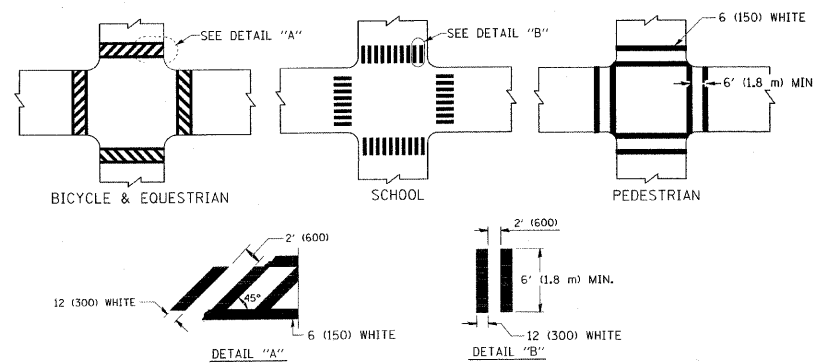
SHEET NO. S4 OF S4 SHEETS	F.A.U. RTE. 2678	SECTION 3025-I-1	COUNTY COOK	TOTAL SHEETS 10	SHEET NO. 8
CONTRACT NO. 60J70					
ILLINOIS FED. AID PROJECT					

PARAPET, BRIDGE DECK AND APPROACH SLAB REPAIRS STRUCTURE NO. 016-0677

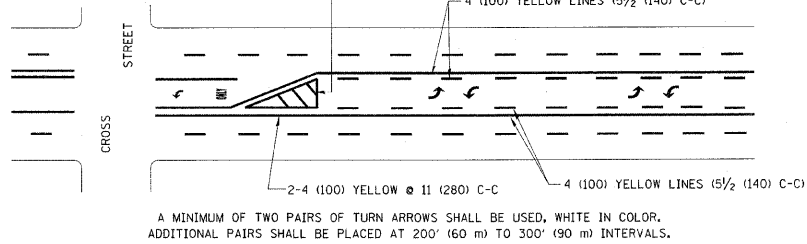
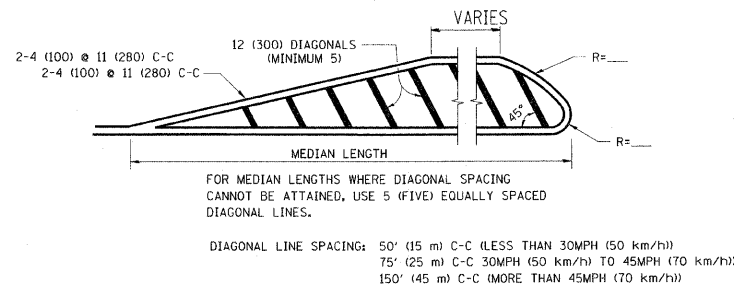
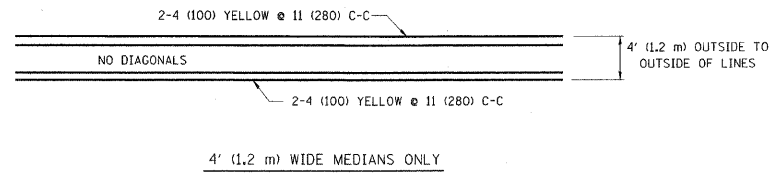


NOTE: MEDIANS WITH BARRIER CURB DO NOT REQUIRE AN EDGE LINE

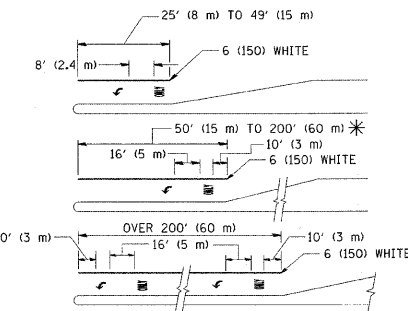
TYPICAL LANE AND EDGE LINE MARKING



TYPICAL CROSSWALK MARKING



TYPICAL PAINTED MEDIAN MARKING

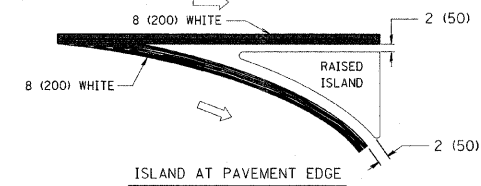
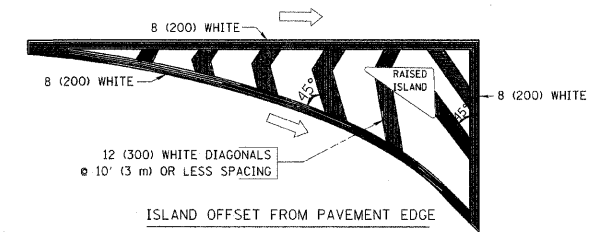


FULL SIZE LETTERS 8' (2.4 m) AND ARROWS SHALL BE USED.
AREA = 15.6 SQ. FT. (1.5 m²) ONLY AREA = 20.8 SQ. FT. (1.9 m²)

* TURN LANES IN EXCESS OF 400' (120 m) IN LENGTH MAY HAVE AN ADDITIONAL SET OF ARROW - "ONLY" INSTALLED MIDWAY BETWEEN THE OTHER TWO SETS OF ARROW - "ONLY".

TYPICAL LEFT (OR RIGHT) TURN LANE

TYPICAL TURN LANE MARKING



TYPICAL ISLAND MARKING

TYPE OF MARKING	WIDTH OF LINE	PATTERN	COLOR	SPACING / REMARKS
CENTERLINE ON 2 LANE PAVEMENT	4 (100)	SKIP-DASH	YELLOW	10' (3 m) LINE WITH 30' (9 m) SPACE
CENTERLINE ON MULTI-LANE UNDIVIDED PAVEMENT	2 @ 4 (100)	SOLID	YELLOW	11 (280) C-C
NO PASSING ZONE LINES: FOR ONE DIRECTION FOR BOTH DIRECTIONS	4 (100) 2 @ 4 (100)	SOLID SOLID	YELLOW YELLOW	5 1/2 (140) C-C FROM SKIP-DASH CENTERLINE 11 (280) C-C OMIT SKIP-DASH CENTERLINE BETWEEN
LANE LINES	4 (100) 5 (125) ON FREEWAYS	SKIP-DASH SKIP-DASH	WHITE WHITE	10' (3 m) LINE WITH 30' (9 m) SPACE
DOTTED LINES (EXTENSIONS OF CENTER, LANE OR TURN LANE MARKINGS)	SAME AS LINE BEING EXTENDED	SKIP-DASH	SAME AS LINE BEING EXTENDED	2' (600) LINE WITH 6' (1.8 m) SPACE
EDGE LINES	4 (100)	SOLID	YELLOW-LEFT WHITE-RIGHT	OUTLINE MOUNTABLE MEDIANS IN YELLOW; EDGE LINES ARE NOT USED NEXT TO BARRIER CURB
TURN LANE MARKINGS	6 (150) LINE; FULL SIZE LETTERS & SYMBOLS (8' (2.4m))	SOLID	WHITE	SEE TYPICAL TURN LANE MARKING DETAIL
TWO WAY LEFT TURN MARKING	2 @ 4 (100) EACH DIRECTION 8' (2.4m) LEFT ARROW	SKIP-DASH AND SOLID IN PAIRS	YELLOW WHITE	10' (3 m) LINE WITH 30' (9 m) SPACE FOR SKIP-DASH; 5 1/2 (140) C-C BETWEEN SOLID LINE AND SKIP-DASH LINE SEE TYPICAL TWO-WAY LEFT TURN MARKING DETAIL
CROSSWALK LINES (PEDESTRIAN) A. DIAGONALS (BIKE & EQUESTRIAN) B. LONGITUDINAL BARS (SCHOOL)	2 @ 6 (150) 12 (300) @ 45° 12 (300) @ 90°	SOLID SOLID SOLID	WHITE WHITE WHITE	NOT LESS THAN 6' (1.8 m) APART 2' (600) APART 2' (600) APART SEE TYPICAL CROSSWALK MARKING DETAILS.
STOP LINES	24 (600)	SOLID	WHITE	PLACE 4' (1.2 m) IN ADVANCE OF AND PARALLEL TO CROSSWALK, IF PRESENT. OTHERWISE, PLACE AT DESIRED STOPPING POINT, PARALLEL TO CROSSROAD CENTERLINE, WHERE POSSIBLE
PAINTED MEDIANS	2 @ 4 (100) WITH 12 (300) DIAGONALS @ 45° NO DIAGONALS USED FOR 4' (1.2 m) WIDE MEDIANS	SOLID	YELLOW: TWO WAY TRAFFIC WHITE: ONE WAY TRAFFIC	11 (280) C-C FOR THE DOUBLE LINE SEE TYPICAL PAINTED MEDIAN MARKING.
GORE MARKING AND CHANNELIZING LINES	8 (200) WITH 12 (300) DIAGONALS @ 45°	SOLID	WHITE	DIAGONALS: 15' (4.5 m) C-C (LESS THAN 30MPH (50 km/h)) 20' (6 m) C-C (30MPH (50 km/h) TO 45MPH (70 km/h)) 30' (9 m) C-C (OVER 45MPH (70 km/h))
RAILROAD CROSSING	24 (600) TRANSVERSE LINES: "RR" IS 6' (1.8 m) LETTERS; 16 (400) LINE FOR "X"	SOLID	WHITE	SEE STATE STANDARD 780001 AREA OF: "R"=3.6 SQ. FT. (0.33 m ²) EACH "X"=54.0 SQ. FT. (5.0 m ²)
SHOULDER DIAGONALS	12 (300) @ 45°	SOLID	WHITE - RIGHT YELLOW - LEFT	50' (15 m) C-C (LESS THAN 30MPH (50 km/h)) 75' (25 m) C-C (30 MPH (50 km/h) TO 45MPH (70 km/h)) 150' (45 m) C-C (OVER 45MPH (70 km/h))

FOR FURTHER DETAILS ON PAVEMENT MARKING REFER TO STANDARD SPECIFICATIONS FOR ROAD AND BRIDGE CONSTRUCTION AND STATE STANDARD 780001.

All dimensions are in inches (millimeters) unless otherwise shown.

FILE NAME =	USER NAME = drivakosgn	DESIGNED - EVERS	REVISED - T. RAMMACHER 10-27-94
ct:\p\work\pavdot\drivakosgn\d0180315\to3.dgn		DRAWN -	REVISED - C. JUCIUS 09-09-09
	PLOT SCALE = 58.8000 "/ IN.	CHECKED -	REVISED -
	PLOT DATE = 9/9/2009	DATE - 03-19-90	REVISED -

STATE OF ILLINOIS
DEPARTMENT OF TRANSPORTATION

DISTRICT ONE			
TYPICAL PAVEMENT MARKINGS			
SCALE: NONE	SHEET NO. 1 OF 1 SHEETS	STA.	TO STA.

F.A.I. RTE.	SECTION	COUNTY	TOTAL SHEETS	SHEET NO.
2678	3025-I-1	COOK	10	10
TC-13			CONTRACT NO. 60J70	
FED. ROAD DIST. NO. 1 ILLINOIS FED. AID PROJECT				