

STATE OF ILLINOIS
DEPARTMENT OF TRANSPORTATION
DIVISION OF HIGHWAYS

**PROPOSED
HIGHWAY PLANS**

F.A.P. ROUTE 341 / ILL 72 (WB)
FORBES AVENUE TO BEVERLY ROAD

SECTION: 32 RS-8
RESURFACING
PROJECT: F-0341(051)
COOK COUNTY
C-91-315-10

| | | | | |
|-----------------------|----------|--------------------|--------------|-----------|
| F.A.P. RTE. | SECTION | COUNTY | TOTAL SHEETS | SHEET NO. |
| 341 | 32 RS-8 | COOK | 19 | 1 |
| FED. ROAD DIST. NO. 1 | ILLINOIS | CONTRACT NO. 60J93 | | |

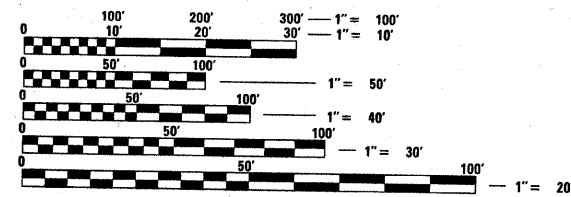
FOR INDEX OF SHEETS, SEE SHEET NO. 2

PROJECT IS LOCATED IN THE VILLAGE OF HOFFMAN ESTATES

D-91-315-10



LOCATION OF SECTION INDICATED THIS: -



FULL SIZE PLANS HAVE BEEN PREPARED USING STANDARD ENGINEERING SCALES. REDUCED SIZED PLANS WILL NOT CONFORM TO STANDARD SCALES. IN MAKING MEASUREMENTS ON REDUCED PLANS, THE ABOVE SCALES MAY BE USED.

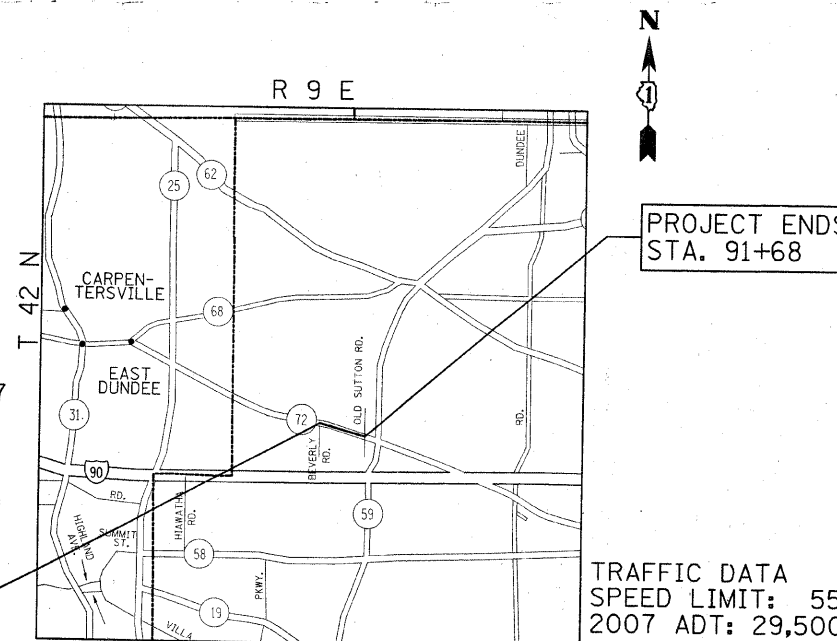
J.U.L.I.E.
JOINT UTILITY LOCATION INFORMATION FOR EXCAVATION
1-800-892-0123
OR 811

PROJECT ENGINEER: DAN WILGREEN (847) 705-4240
PROJECT MANAGER: KEN ENG

CONTRACT NO. 60J93

OMISSION
STA. 82+28 TO STA. 83+87

PROJECT BEGINS
STA. 17+86



TRAFFIC DATA
SPEED LIMIT: 55 MPH
2007 ADT: 29,500

BARRINGTON TOWNSHIP

GROSS LENGTH OF PROJECT = 7,382 FEET (1.4 MILES)
NET LENGTH OF PROJECT = 7,223 FEET (1.4 MILES)

STATE OF ILLINOIS
DEPARTMENT OF TRANSPORTATION
DIVISION OF HIGHWAYS

SUBMITTED FEBRUARY 5, 2010

Dina M. O'Keefe
DEPUTY DIRECTOR OF HIGHWAYS, REGION ENGINEER

March 19 2010

Scott E. Stitt P.E.
ACTING ENGINEER OF DESIGN AND ENVIRONMENT

March 19 2010

Christine M. Reed
DIRECTOR OF HIGHWAYS, CHIEF ENGINEER

PRINTED BY THE AUTHORITY
OF THE STATE OF ILLINOIS