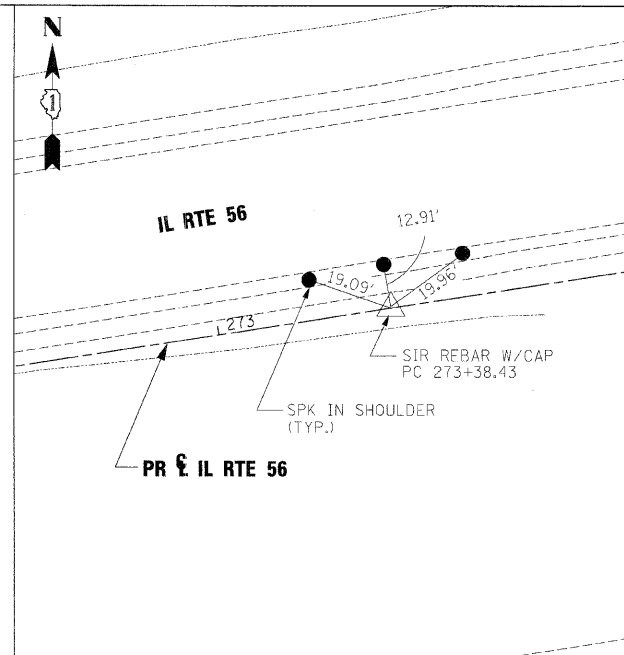
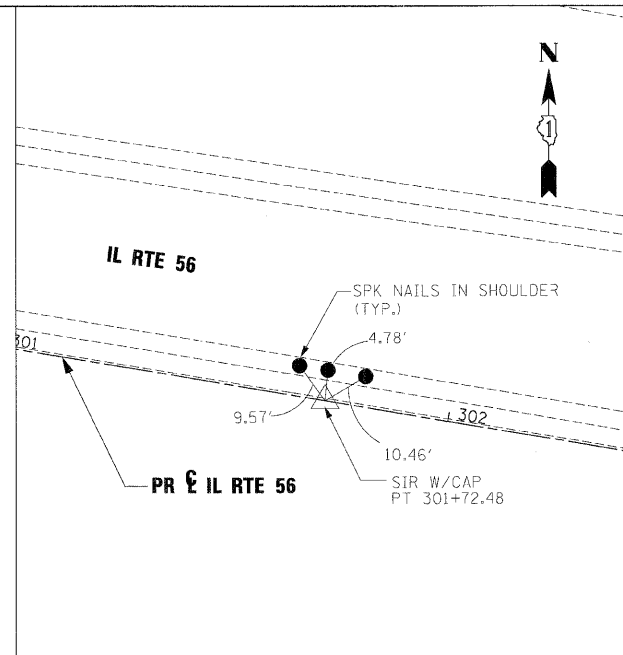


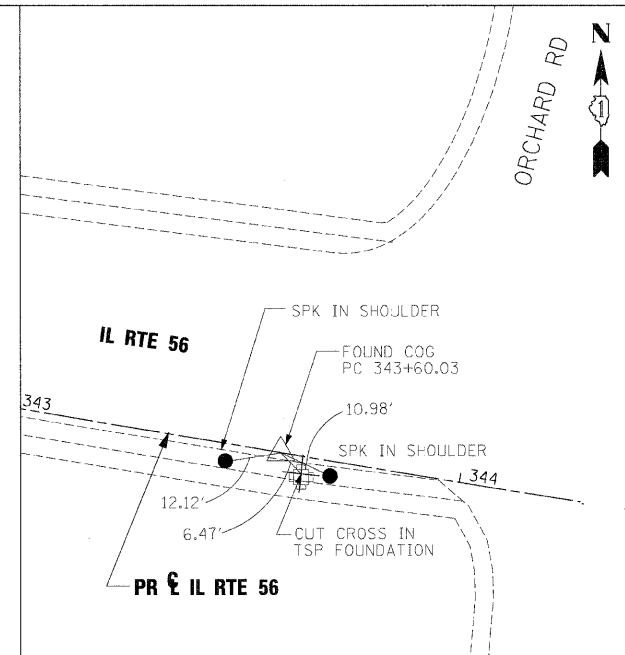
PT STA. 263+33.07



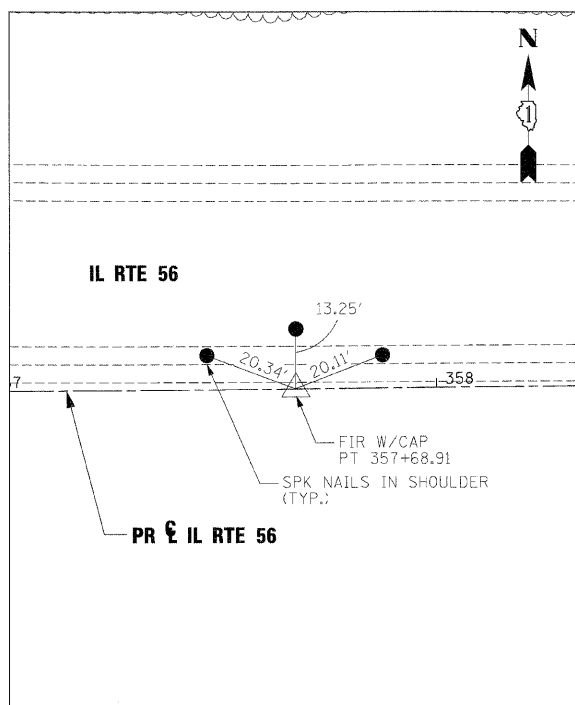
PC STA. 273+38.43



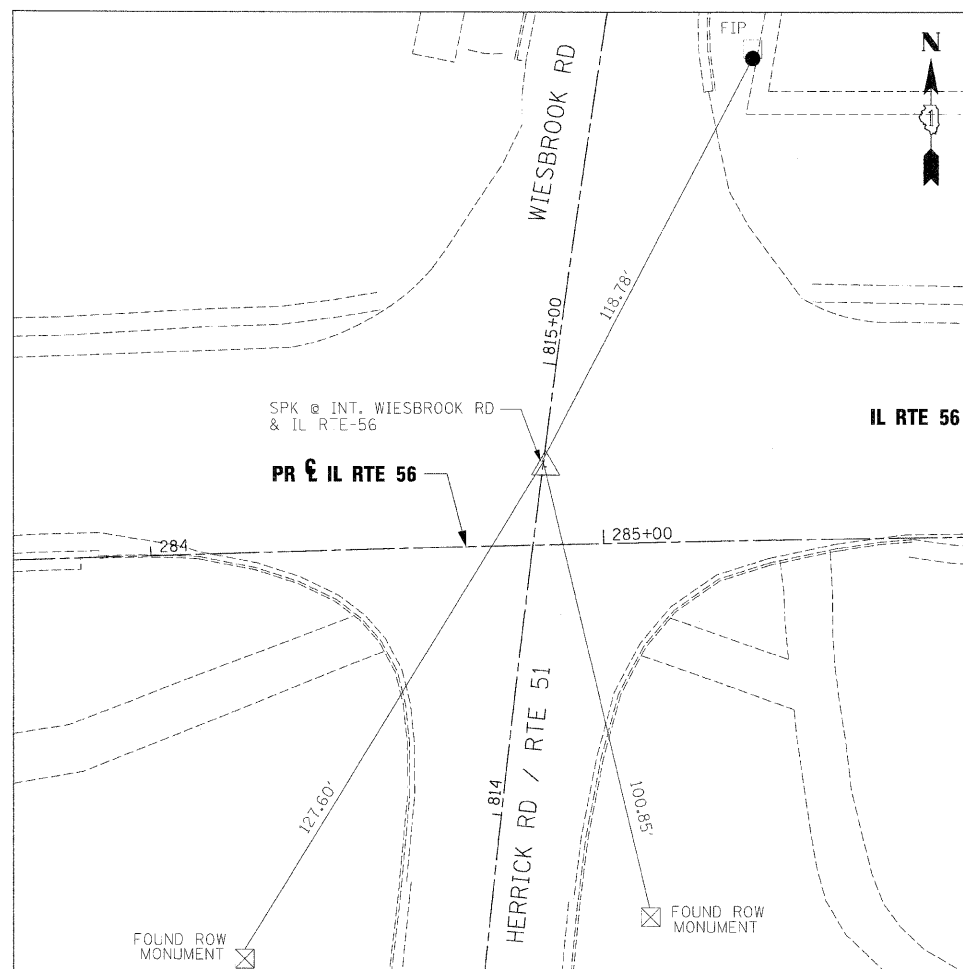
PT STA. 301+72.48



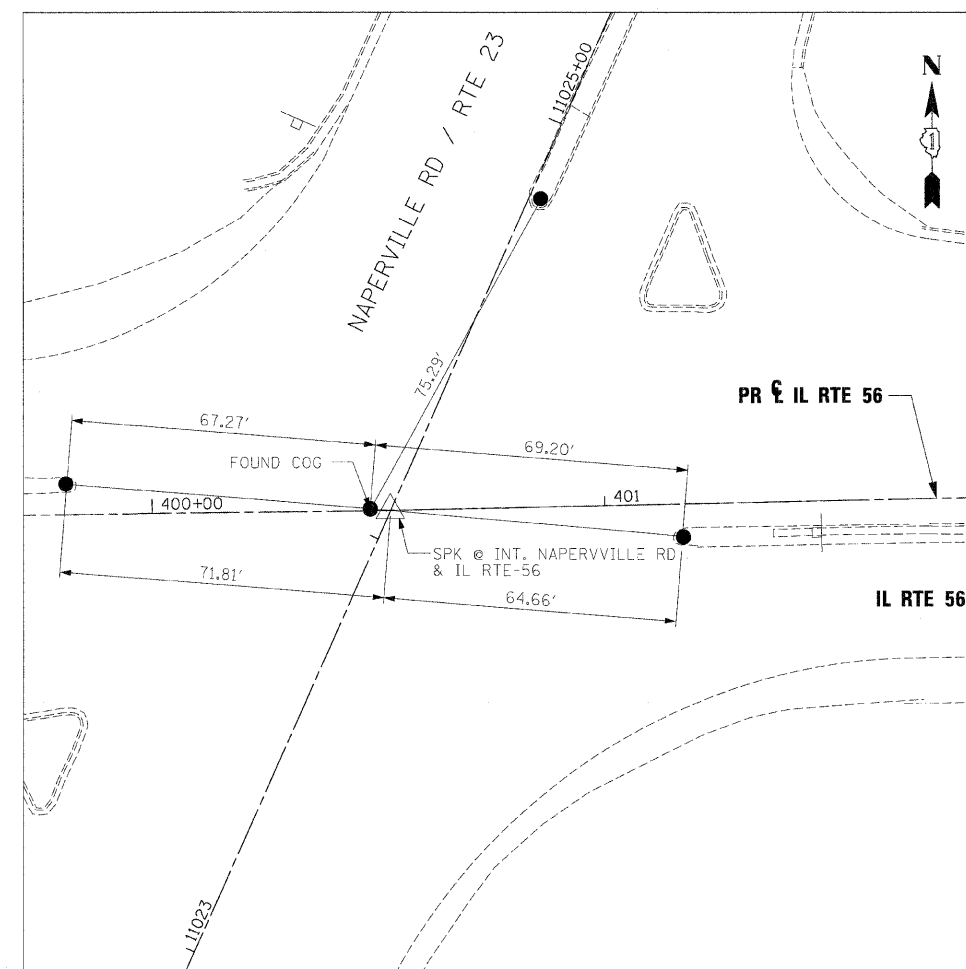
PC STA. 343+60.03



PT STA. 357+68.91



SPIKE NAIL @ INTERSECTION IL RTE 56 AND HERRICK RD / RTE 51 / WIESBROOK RD



SPIKE NAIL @ INTERSECTION IL RTE 56 AND NAPERVILLE RD / RTE 23

FILE NAME =	DESIGNED - JMM	REVISED -
... \ADV_D162419-sht-ABT4.dgn	DRAWN - TMB	REVISED -
USER NAME = tblens	CHECKED - RMT	REVISED -
PLCT DATE = 2/25/2010	DATE - 2/25/2010	REVISED -

benesch

**STATE OF ILLINOIS
DEPARTMENT OF TRANSPORTATION**

ALIGNMENT AND TIES		F.A.P. RTE.	SECTION	COUNTY	TOTAL SHEETS	SHEET NO.
SCALE: 1"=250'	SHEET NO. 4 OF 4 SHEETS	365	(57,58 & 59)-1	DUPAGE	58	14
STA.	TO STA.	CONTRACT NO. 60K47				
	X	ILLINOIS FED. AID PROJECT				