

STATE OF ILLINOIS
DEPARTMENT OF TRANSPORTATION
DIVISION OF HIGHWAYS

PLANS FOR PROPOSED
FEDERAL AID HIGHWAY

KEYES AVENUE, STATE STREET (FAU 0098) TO EAST OF INDUSTRIAL DRIVE
INDUSTRIAL DRIVE, KEYES AVENUE TO EAST OF ROWELL ROAD
MILL AVENUE, WEST OF KLINK STREET TO STATE STREET (FAU 0098)
PAVEMENT RECONSTRUCTION AND UTILITY IMPROVEMENTS

SECTION: 06-00015-00-PV
PROJECT NUMBER: HPP-1468(004)
JOB NUMBER: C-91-175-06
VILLAGE OF HAMPSHIRE
KANE COUNTY

F.A. RTE.	SECTION	COUNTY	TOTAL SHEETS	SHEET NO.
N/A	06-00015-00-PV	KANE	97	1

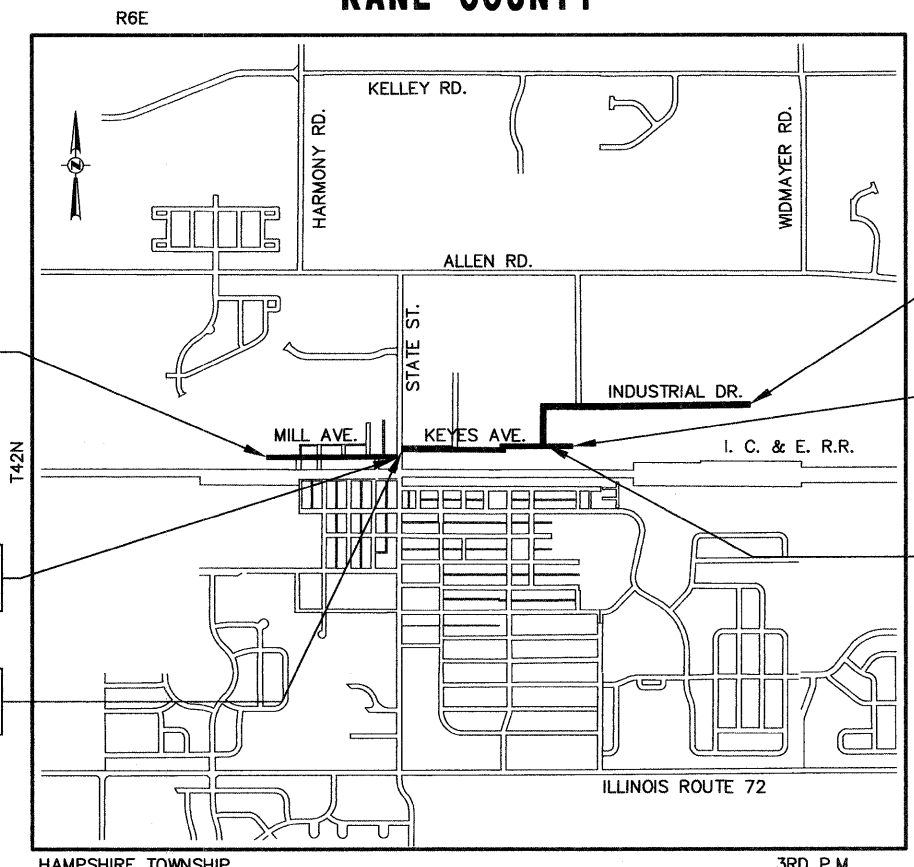
CONTRACT NO. 63406



LOCATION OF SECTION INDICATED THUS: - [black box] -

FOR INDEX OF SHEETS
AND STATE STANDARDS
SEE SHEET NO. 2

	KEYES AVENUE	INDUSTRIAL DRIVE	MILL AVENUE
DESIGN DESIGNATION	URBAN LOCAL ROAD	URBAN LOCAL ROAD	URBAN LOCAL ROAD
POSTED SPEED LIMIT	30 MPH	30 MPH	30 MPH
STR. DESIGN TRAFFIC (YEAR), DHV	1,550 (2030), 155	1,100 (2030), 110	850 (2030), 85
VEHICLE BREAKDOWN %: PV, SU, MJ	88%, 12%, 2%	83%, 13%, 2%	72%, 23%, 5%
% STR. DESIGN TRAF. IN DESIGN LANE	PV: 50%, SU: 50%, MJ: 50%	PV: 50%, SU: 50%, MJ: 50%	PV: 50%, SU: 50%, MJ: 50%
TRAFFIC FACTOR ACTUAL, MINIMUM	0.31	0.24	0.38



PROJECT LOCATED IN
VILLAGE OF HAMPSHIRE

CONSTRUCTION BEGINS
STA. 100+49
MILL AVENUE

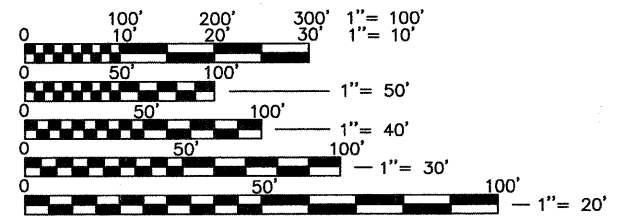
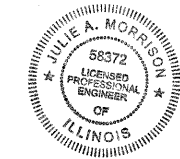
CONSTRUCTION ENDS
STA. 117+77
MILL AVENUE

CONSTRUCTION BEGINS
STA. 200+26
KEYES AVENUE

CONSTRUCTION ENDS
STA. 325+73
INDUSTRIAL DRIVE

CONSTRUCTION ENDS
STA. 222+82
KEYES AVENUE

CONSTRUCTION BEGINS
STA. 299+98
INDUSTRIAL DRIVE



FULL SIZE PLANS HAVE BEEN PREPARED USING STANDARD ENGINEERING SCALES, REDUCED SIZED PLANS WILL NOT CONFORM TO STANDARD SCALES, IN MAKING MEASUREMENTS ON REDUCED PLANS, THE ABOVE SCALES MAY BE USED.

HAMPSHIRE TOWNSHIP 3RD P.M.

LOCATION MAP
(N.T.S.)
GROSS LENGTH = NET LENGTH OF PROJECT = 6,559 FEET (1.242 MILES)
KEYES AVENUE = 2,256 FEET (0.427 MILES)
INDUSTRIAL DRIVE = 2,575 FEET (0.488 MILES)
MILL AVENUE = 1,728 FEET (0.327 MILES)

JULIE
JOINT
UTILITY
LOCATION
INFORMATION FOR
EXCAVATION
CALL 811

Know what's below.
Call before you dig.

CONTRACT NO. 63406

Engineering Enterprises, Inc.
CONSULTING ENGINEERS
44 W 110 US Hwy 20
Hampshire, Illinois 60140
Phone: (847) 683-3100

ENGINEER'S CERTIFICATION

I HEREBY CERTIFY THAT THESE PLANS WERE PREPARED UNDER MY DIRECT SUPERVISION.

DATED AT HAMPSHIRE, ILLINOIS,
THIS 2ND DAY OF February, 2010.

Julie A. Morrison
JULIE A. MORRISON, P.E.
ILLINOIS LICENSED PROFESSIONAL ENGINEER NO. 062-058372
EXPIRATION DATE: 11/30/11

STATE OF ILLINOIS
DEPARTMENT OF TRANSPORTATION
DIVISION OF HIGHWAYS

APPROVED *[Signature]*
FEBRUARY 2, 2010
VILLAGE OF HAMPSHIRE, VILLAGE ADMINISTRATOR

PASSED *[Signature]*
FEBRUARY 3, 2010
DISTRICT ENGINEER OF LOCAL ROADS & STREETS

RELEASING FOR
BID BASED ON
LIMITED REVIEW *[Signature]*
FEBRUARY 3, 2010
DEPUTY DIRECTOR OF HIGHWAYS, REGION 1 ENGINEER

PRINTED BY THE AUTHORITY
OF THE STATE OF ILLINOIS

CONSULTING ENGINEER: ENGINEERING ENTERPRISES, INC. CONTACT: JULIE MORRISON 847-683-3100
FIELD ENGINEER CONTACT: MARILYN SOLOMON 847-705-4407
Plotted: February 1, 2010 @ 2:02 PM By: Kris Pung - Tab: 01-CVR (2/2/34)

Path: \\S05KPROJ\H0687\DWG\H06828\DWG_FINAL_ENG\H0687-CVR