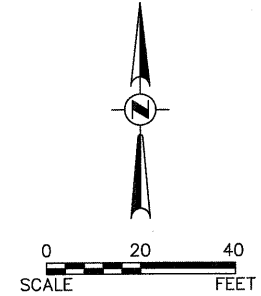
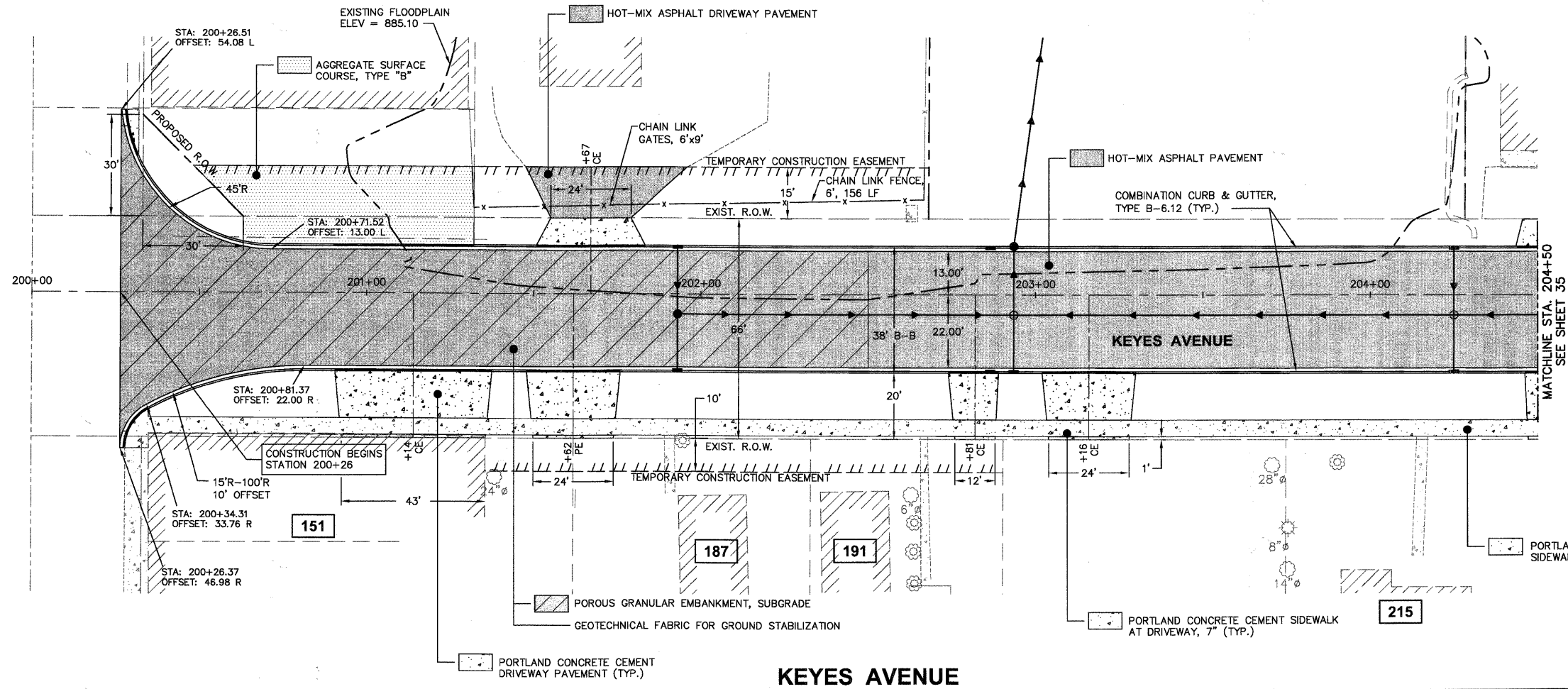


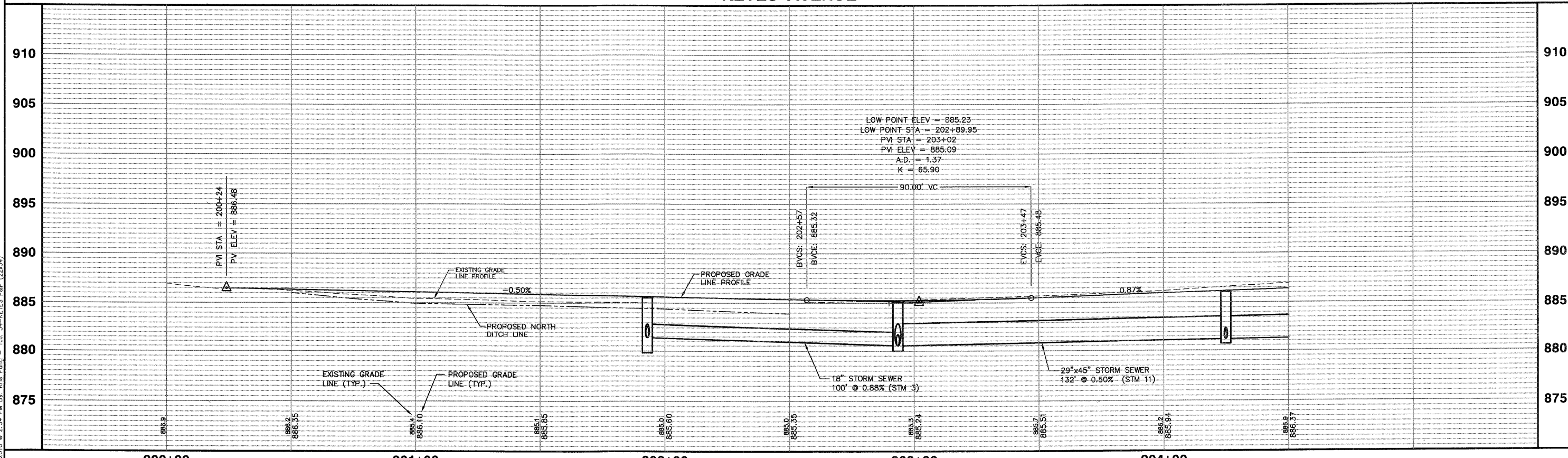
STATE STREET



NOTE:  
1. SEE UTILITY PLAN AND PROFILE SHEETS FOR DETAILED STORM SEWER, SANITARY SEWER, AND WATER MAIN IMPROVEMENTS.

SCALE:  
HORIZONTAL 1" = 20'  
VERTICAL 1" = 5'

KEYES AVENUE



FILE NAME #FILE#		USER NAME = #USER#	DESIGNED - JAM, SWM DRAWN - KKP	REVISED - 12/02/09 REVISED - 01/22/10	<b>STATE OF ILLINOIS DEPARTMENT OF TRANSPORTATION</b>	<b>PROPOSED KEYES AVENUE PLAN AND PROFILE</b>		F.A. RTE. N/A	SECTION 06-00015-00-PV	COUNTY KANE	TOTAL SHEETS 97	SHEET NO. 34
PLOT SCALE = #SCALE#		CHECKED - JAM	DATE - 10/16/09	REVISED - 02/03/10		PROJECT NO. HPP-1468(004)	JOB NO. C-91-175-06	STA. N/A TO STA. N/A		CONTRACT No. 63406		
PLOT DATE = #DATE#		DATE - 10/16/09	REVISED -	REVISED -		SCALE: 1"=20'	SHEET NO. 31 OF 92 SHEETS	FED. ROAD DIST. NO. -	ILLINOIS FED. AID PROJECT			

Plotted: February 1, 2010 @ 2:34 PM By: Kris Pung - Tab: 34-KEYES P&P (22,34)

Path: \\S:\KIPROA\VA6567\DWG\VA0828\DWG\_FINAL\ENG\VA6567-PP.ROAD