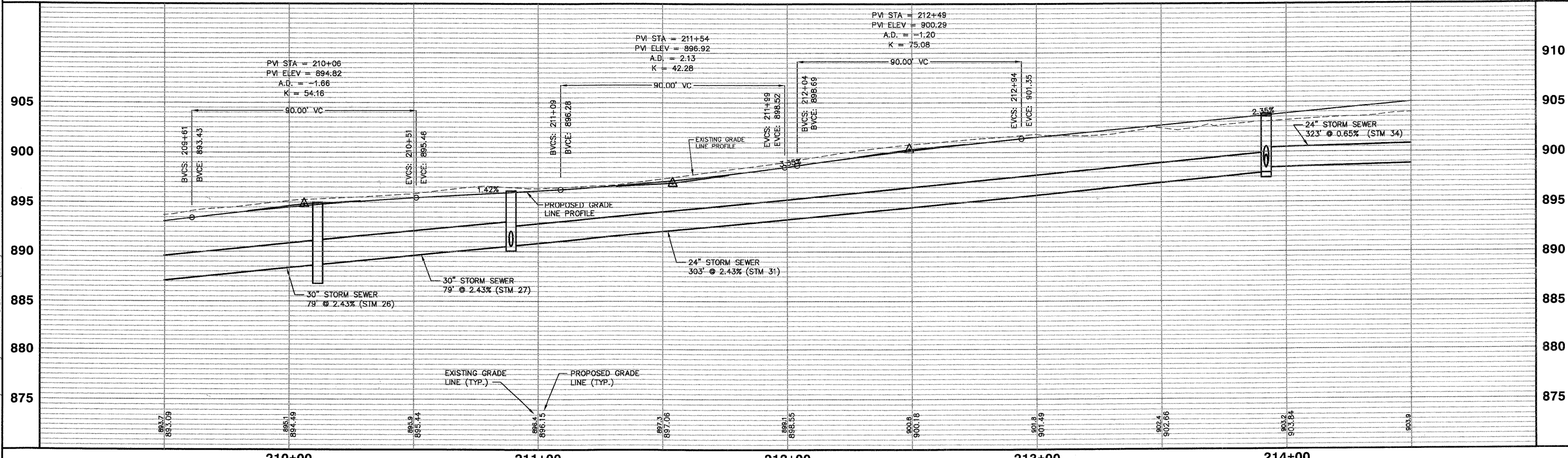


NOTE:
1. SEE UTILITY PLAN AND PROFILE SHEETS FOR DETAILED STORM SEWER, SANITARY SEWER, AND WATER MAIN IMPROVEMENTS.

CURVE	LENGTH	RADIUS	DELTA	TANGENT	CHORD BEARING	CHORD LENGTH	M	PC	PT	PI	E
CURVE 1	113.80'	473.50'	13°46'13"	57.18'	N83°16'11"E	113.53'	3.41'	208+04.54	209+18.34	209+61.44	3.44'R
CURVE 2	110.20'	458.50'	13°46'13"	55.36'	S83°16'11"W	109.93'	3.31'	209+18.34	210+28.53	209+73.44	3.33'R

SCALE:
HORIZONTAL 1" = 20'
VERTICAL 1" = 5'

KEYES AVENUE



COPYRIGHT © 2010 ENGINEERING ENTERPRISES, INC. FILE NAME: #FILE# USER NAME: #USER# PLOT SCALE: #SCALE# PLOT DATE: #DATE#				DESIGNED - JAM, SWM DRAWN - KKP CHECKED - JAM DATE - 10/16/09				REVISED - 12/02/09 REVISED - 01/22/10 REVISED - 02/03/10 REVISED -				STATE OF ILLINOIS DEPARTMENT OF TRANSPORTATION				PROPOSED KEYES AVENUE PLAN AND PROFILE				F.A. RTE.: N/A SECTION: 06-00015-00-PV COUNTY: KANE TOTAL SHEETS: 97 SHEET NO.: 36 CONTRACT NO. 63406	
SCALE: 1"=20' SHEET NO. 33 OF 92 SHEETS				PROJECT NO. HPP-1468(004) STA. N/A				JOB NO. C-91-175-06 TO STA. N/A				FED. ROAD DIST. NO. - ILLINOIS FED. AID PROJECT									

Plotted: February 1, 2010 @ 2:35 PM By: Kris Pung - Tab: 36--KEYES P&P (22-34)
 Path: \\S05KPROJ\H40567\DWG\H40828\DWG_FINAL_ENG\H40567-PP.ROAD