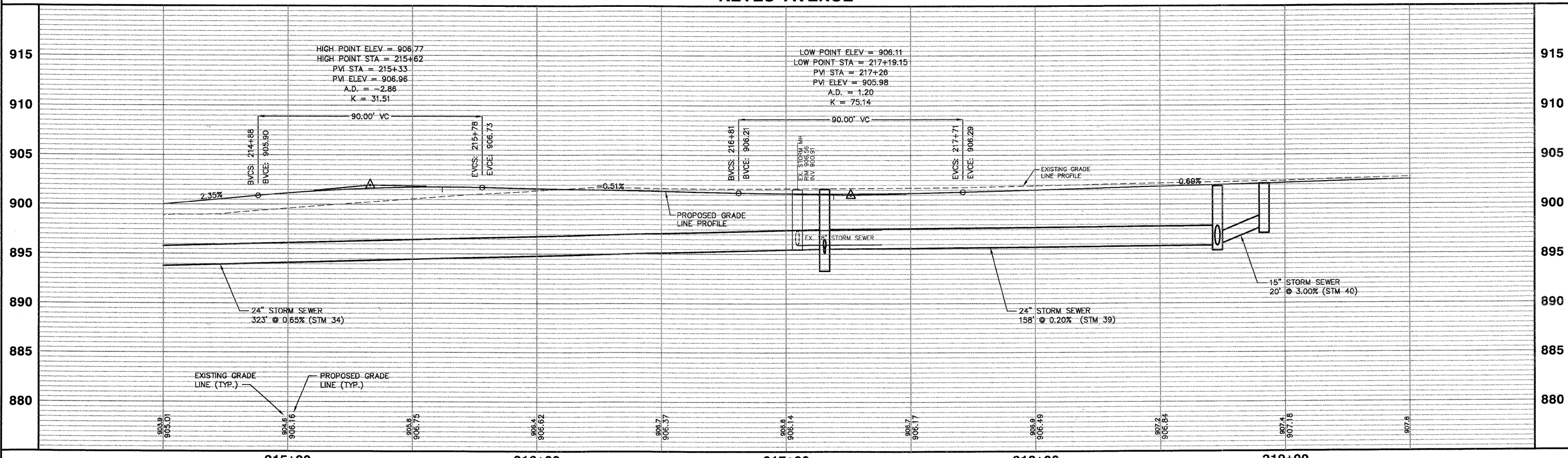


NOTE:
1. SEE UTILITY PLAN AND PROFILE SHEETS FOR DETAILED STORM SEWER, SANITARY SEWER, AND WATER MAIN IMPROVEMENTS.

SCALE:
HORIZONTAL 1" = 20'
VERTICAL 1" = 5'

KEYES AVENUE



Plotted: February 1, 2010 @ 2:35 PM By: Kris Pung - Tab: 37-KEYES P&P (22,34)
 Copyright © 2010 ENGINEERING ENTERPRISES, INC.

Path: \\S:\PROJ\1468\1468\DWG\146828.DWG (146828) FINAL ENG (146828) - PP ROAD

FILE NAME #FILE#				USER NAME = #USER#				DESIGNED - JAM, SWM DRAWN - KKP CHECKED - JAM PLOT DATE = #DATE#				REVISED - 12/02/09 REVISED - 01/22/10 REVISED - 02/03/10 REVISED -				STATE OF ILLINOIS DEPARTMENT OF TRANSPORTATION				PROPOSED KEYES AVENUE PLAN AND PROFILE				F.A. RTE. N/A		SECTION 06-00015-00-PV		COUNTY KANE		TOTAL SHEETS 97		SHEET NO. 37	
PROJECT NO. HPP-1468(004)				JOB NO. C-91-175-06				STA. N/A TO STA. N/A				SHEET NO. 34 OF 92 SHEETS												FED. ROAD DIST. NO.		ILLINOIS FED. AID PROJECT		CONTRACT No. 68406					