

STORM SEWER STRUCTURE SCHEDULE												
STR.	STATION	OFFSET	LT./RT.	INLET TY. A, TY. 11 F&G		INLET TY. B, TY. 11 F&G		MH. TY. A, 4' TY. 1 CLOSED LID		C.B. TY. A, 4' TY. 1 CLOSED LID		T/C ELEV. (RIM ELEV. IF NO T/C)
				EACH	EACH	EACH	EACH	N	S	E	W	
34	217+19	7.25	RT.									905.98
35	217+19	16.00	LT.	1								906.27
36	217+26	16.00	LT.	1								906.27
37	217+19	16.00	RT.			1						906.27
38	217+26	16.00	RT.	1								906.27
39	218+73	7.25	RT.					1				906.86
40	218+73	14.50	RT.								SE 902.23	907.27
44	217+04	11.76	RT.								NW 902.83	905.90
<b>TOTALS</b>				<b>3</b>	<b>1</b>	<b>1</b>	<b>2</b>	<b>1</b>				

SANITARY SEWER STRUCTURE SCHEDULE											
STR.	STATION	OFFSET	LT./RT.	SAN MH TY. A 4' DIA. TY. 1 F. CL		STRUCTURE INVERTS				RIM ELEV.	
				EACH	EACH	N	S	E	W		
10	216+10	7.25	LT	1							906.31
11	218+39	7.25	LT	1							906.52
<b>TOTALS</b>				<b>2</b>							

FIRE HYDRANT SCHEDULE					
STR.	STATION	OFFSET	LT./RT.	FIRE HYDRANT ASSEMBLY, COMPLETE (EACH)	BURY ELEV.
5	214+51	29.0	LT	1	904.50
6	218+24	32.0	LT	1	906.55
<b>TOTALS</b>				<b>2</b>	

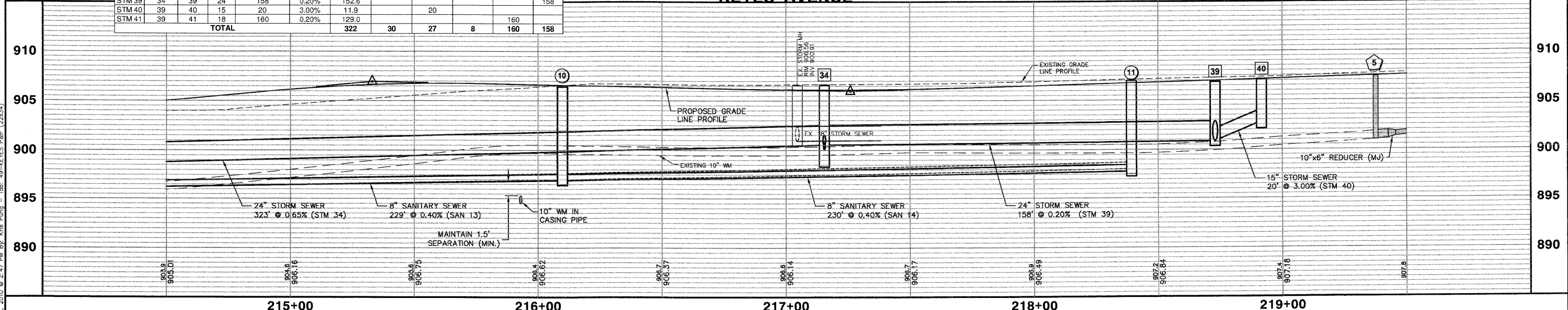
STORM SEWER DRAINAGE SCHEDULE											
PIPE #	D.S. STR.	U.S. STR.	PIPE DIA.	LENGTH	SLOPE	TRENCH BACKFILL	S.S. CL. A TY. 1, 12"	S.S. CL. A TY. 1, 15"	S.S. CL. A TY. 1, 18"	S.S. R.G., CL. A TY. 1, 18"	S.S. CL. A TY. 2, 24"
			(IN)	(FOOT)	(%)	(CY)	(FOOT)	(FOOT)	(FOOT)	(FOOT)	(FOOT)
STM 35	34	35	12	23	3.00%	15.7	23				
STM 36	35	36	12	7	4.29%	2.5	7				
STM 37	34	37	18	8	3.00%	5.9		8			
STM 38	37	38	15	7	3.43%	4.8		7			
STM 39	34	39	24	158	0.20%	152.6					158
STM 40	39	40	15	20	3.00%	11.9		20			
STM 41	39	41	18	160	0.20%	129.0					160
<b>TOTAL</b>				<b>322</b>	<b>30</b>	<b>27</b>	<b>8</b>	<b>160</b>	<b>158</b>		

SANITARY SEWER SCHEDULE							
PIPE #	D.S. STR.	U.S. STR.	LENGTH	SLOPE	TRENCH BACKFILL	8" SDR-26	
			(FT)	(%)	(CY)	(FOOT)	
SAN 14	10	11	230	0.40	274.4	230	
<b>TOTAL</b>						<b>274</b>	<b>230</b>

VALVE VAULT SCHEDULE					
STR.	STATION	OFFSET	LT./RT.	10" GATE VALVE IN 5' VV (EACH)	RIM ELEV.
5	219+39	21.3	LT	1	907.45
<b>TOTALS</b>				<b>1</b>	

SCALE:  
HORIZONTAL 1" = 20'  
VERTICAL 1" = 5'

**KEYES AVENUE**



Copyright © 2010 Engineering Enterprises, Inc.  
FILE NAME  
#FILE#

USER NAME = #USER#	DESIGNED - JAM, SWM	REVISD - 12/02/09
PLOT SCALE = #SCALE#	DRAWN - KKP	REVISD - 01/22/10
PLOT DATE = #DATE#	CHECKED - JAM	REVISD - 02/03/10
	DATE - 10/16/09	REVISD -

STATE OF ILLINOIS  
DEPARTMENT OF TRANSPORTATION

KEYES AVENUE DRAINAGE AND UTILITIES SHEET  
PROJECT NO. HPP-1468(004) JOB NO. C-91-175-06  
SHEET NO. 46 OF 92 SHEETS STA. N/A TO STA. N/A

F.A. RTE.	SECTION	COUNTY	TOTAL SHEETS	SHEET NO.
N/A	06-00015-00-PV	KANE	97	49
FED. ROAD DIST. NO. - ILLINOIS FED. AID PROJECT			CONTRACT NO. 63406	

Plotted: February 1, 2010 @ 2:47 PM By: Kite Puno - Tab: 49-KEYES P&F (22x34)

Path: V:\SRP\04\0567\06\04028\DWG\_FINAL\ENG\0567-PP-UTILITY