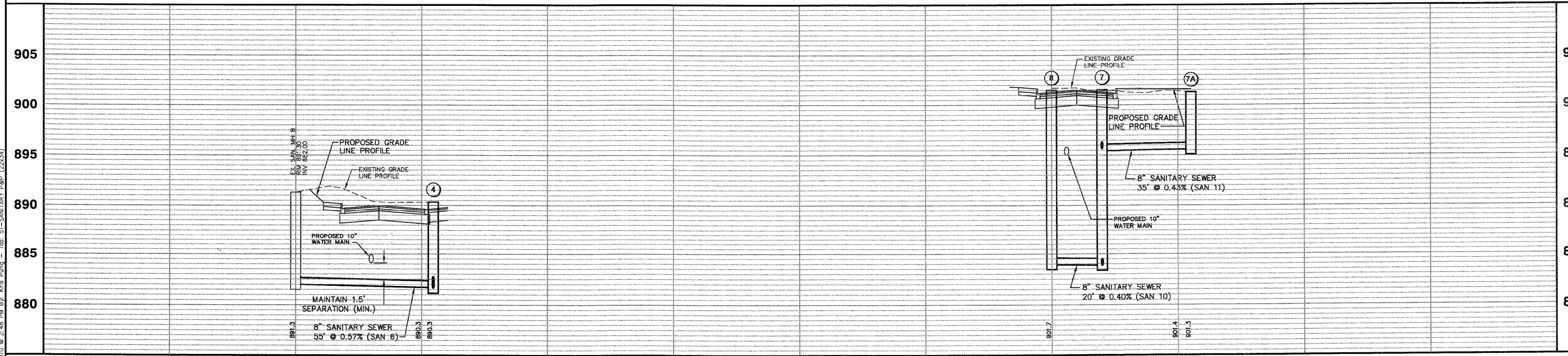


SANITARY SEWER STRUCTURE SCHEDULE										
STR.	STATION	OFFSET	LT/RT	SAN MH		STRUCTURE INVERTS				RIM ELEV.
				TY. A 4' DIA. TY. 1 F. CL	TY. A 5' DIA. TY. 1 F. CL	N	S	E	W	
4	208+70	22.0	RT	1		881.69		882.09	881.64	890.33
7	213+09	9.50	RT		1	883.86	895.45	895.67	883.86	901.52
7A	213+11	45.0	RT	1		895.80	896.05			901.30
8	213+09	10.5	LT	1		883.94	883.94			901.48
<b>TOTALS</b>				<b>3</b>	<b>1</b>					

SANITARY SEWER SCHEDULE									
PIPE #	D.S. STR.	U.S. STR.	LENGTH (FT)	SLOPE (%)	TRENCH BACKFILL (CY)	8" SDR-26 (FOOT)	8" SDR-21 (FOOT)		
SAN 6	4	Ex MHB	35	0.89	39.3	35			
SAN 10	7	8	20	0.40	47.0		20		
SAN 11	7	7A	35	0.43	24.2	35			
SAN 12	7	9	74	0.40	56.0	74			
<b>TOTAL</b>					<b>166</b>	<b>144</b>	<b>20</b>		



Plotted: February 1, 2010 @ 2:48 PM By: Kris Plump - Tab: 51 - SANITARY P&P (22,334)

Path: \\SBSKPC01\IA6567\DWG\IA6567\DWG\_FINAL\ENR\IA6567-PP\_UTILITY

COPYRIGHT © 2010 ENGINEERING ENTERPRISES, INC.				<b>STATE OF ILLINOIS</b>				<b>KEYES AVENUE DRAINAGE AND UTILITY SHEET</b>		F.A. -- RTE. --		SECTION		COUNTY		TOTAL SHEETS		SHEET NO.	
FILE NAME				USER NAME = #USER#				DESIGNED - JAM, SWM				N/A		06-00015-00-PV		KANE		97 51	
#FILE#				DRAWN - KKP				REVISED - 12/02/09				PROJECT NO. HPP-1468(004)				JOB NO. C-91-175-06			
PLOT SCALE = #SCALE#				CHECKED - JAM				REVISED - 01/22/10				SHEET NO. 48 OF 92 SHEETS				STA. N/A TO STA. N/A			
PLOT DATE = #DATE#				DATE - 10/16/09				REVISED - 02/03/10				FED. ROAD DIST. NO. - [ILLINOIS]				FED. AID PROJECT			
												CONTRACT NO. 63406							