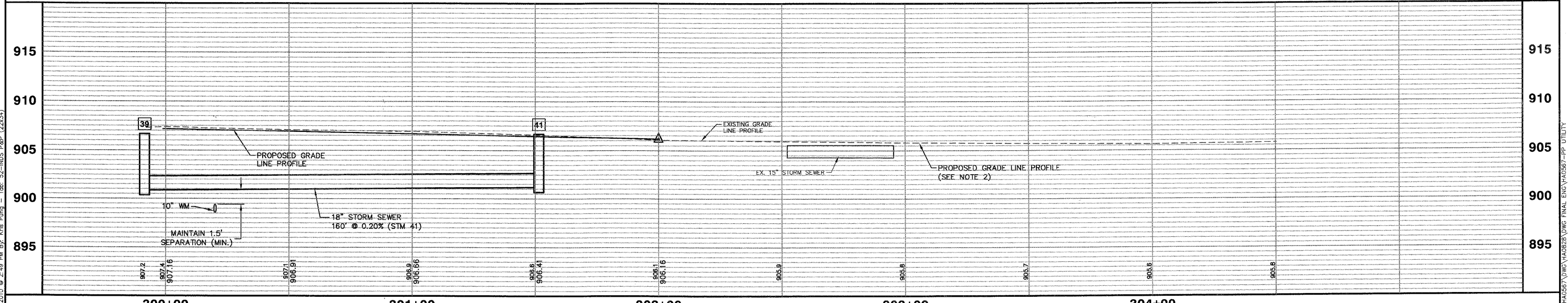


STORM SEWER STRUCTURE SCHEDULE											
STR.	STATION	OFFSET	LT./RT.	INLET TY. A, TY. 11V, F&G	C.B. TY. A, 4' TY. 1 CLOSED LID	STRUCTURE INVERTS				T/C ELEV. (RIM ELEV. IF NO T/C)	
						N	S	E	W		
41	301+51	26.00	LT.	EACH	EACH	1		901.17	901.17		906.37
42	301+51	16.00	LT.	1					901.50	901.50	906.57
43	301+51	16.00	RT.	1						902.43	906.57
TOTALS				2	1						

STORM SEWER DRAINAGE SCHEDULE							
PIPE #	D.S. STR.	U.S. STR.	PIPE DIA. (IN)	LENGTH (FOOT)	SLOPE (%)	TRENCH BACKFIL L (CY)	S.S. CL. A TY. 1, 12" (FOOT)
STM 43	42	43	12	31	3.00%	11.8	31
TOTAL				19		42	

SCALE:
HORIZONTAL 1" = 20'
VERTICAL 1" = 5'

INDUSTRIAL DRIVE



Plotted: February 1, 2010 @ 2:49 PM By: Kris Pung - Tab: 52-INDS P&P (22x34)

P:\06-00015-00-PV\INDS\INDS_P&P\INDS_P&P_06-00015-00-PV.dwg

COPYRIGHT © 2010 ENGINEERING ENTERPRISES, INC.		DESIGNED - JAM, SWM		REVISED - 12/02/09		STATE OF ILLINOIS DEPARTMENT OF TRANSPORTATION		INDUSTRIAL DRIVE DRAINAGE AND UTILITIES SHEET		F.A. RTE.	SECTION	COUNTY	TOTAL SHEETS	SHEET NO.
FILE NAME	USER NAME = #USER#	DRAWN - KKP	REVISED - 01/22/10	N/A	06-00015-00-PV					KANE	97	52		
#FILE#	PLOT SCALE = #SCALE#	CHECKED - JAM	REVISED - 02/03/10	CONTRACT NO. 63406										
	PLOT DATE = #DATE#	DATE - 10/16/09	REVISED -	FED. ROAD DIST. NO. - [ILLINOIS] FED. AID PROJECT										
		DATE - 10/16/09		REVISED -		PROJECT NO. HPP-1468(004)		JOB NO. C-91-175-06						
						SCALE: 1"=20'		SHEET NO. 49 OF 92 SHEETS		STA. N/A TO STA. N/A				