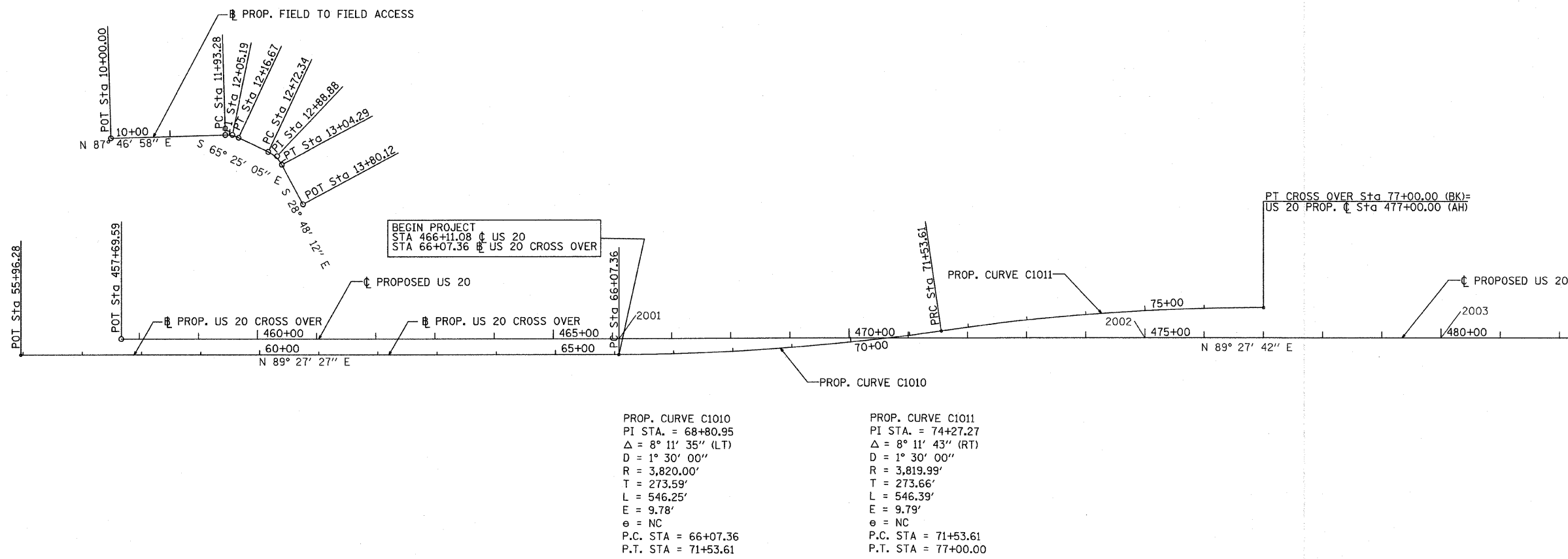


F.A. RTE.	SECTION	COUNTY	TOTAL SHEETS	SHEET NO.
301	177-2 (-1A, B-1, VB-1)	STEPHENSON	386	39
STA. 55+96.28 457+69.59		TO STA. 83+00.00 483+00.00		
FED. ROAD DIST. NO.		ILLINOIS FED. AID PROJECT		
P-92-029-02		ALIGN-1 OF 6		



MATCH LINE STA. 482+00 SEE ALIGN-2

REVISIONS	
NAME	DATE

ILLINOIS DEPARTMENT OF TRANSPORTATION
 F.A.P. ROUTE 301 (US RTE. 20)
 FROM BOLTON ROAD TO WEST OF IL RTE. 26
ALIGNMENT, TIES AND BENCHMARKS

SCALE: 1"=100'
 DATE: 01-22-10
 DRAWN BY: RMH
 CHECKED BY: DYS

